

WELCOME!



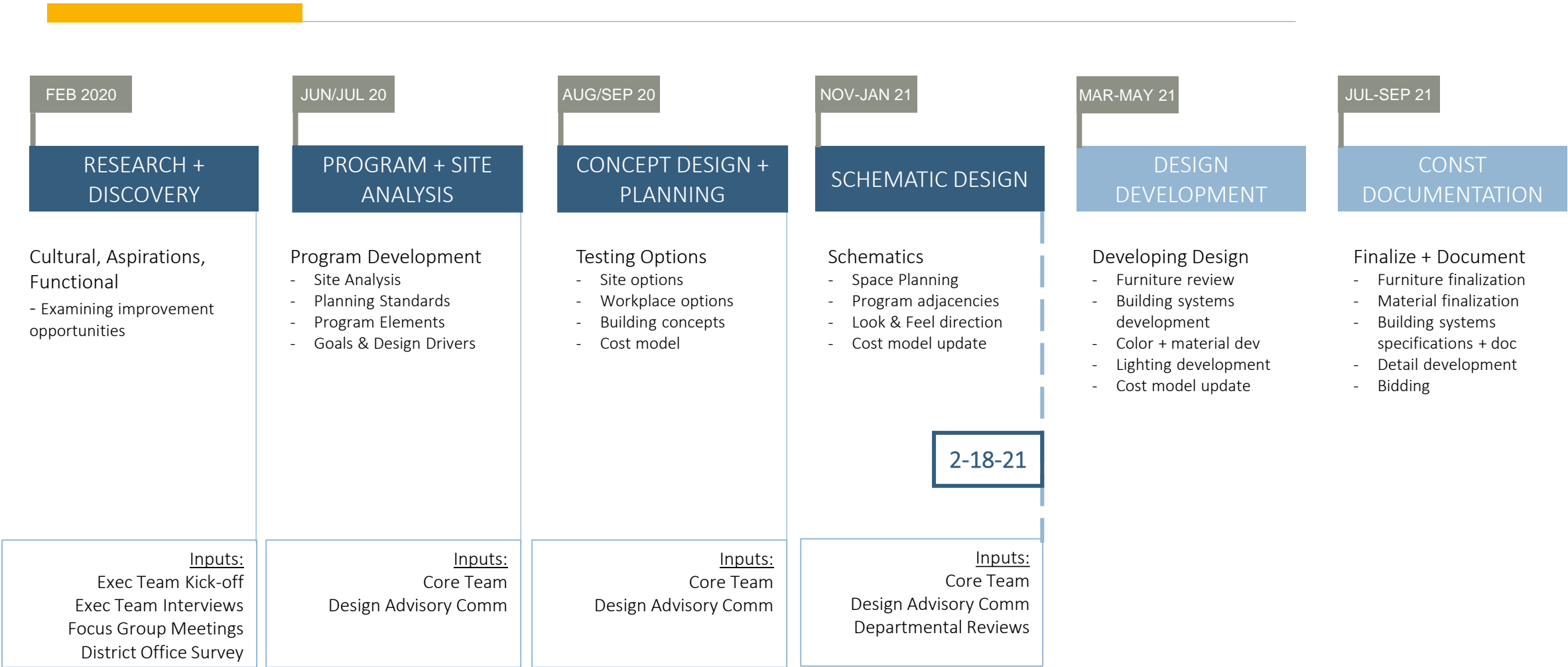
*Bellingham Public Schools New District Office
All Staff Design Update*

February 18, 2021

Agenda

- Welcome & Introduction
- Goals & Design Precepts
- Design Precepts Illustrated
- Community Heart Design
- Floor Plans
- Workstation Preliminary ideas
- Building Design
- Next steps

Roadmap



2-18-21

Goals & Design Precepts

Design Precepts:

pre·cept
/'prē,sept/ Noun

Definition: a general rule intended to regulate behavior or thought.

BPS New District Office Vision: A place that embodies the investment the community has made in education and all that it stands for – creating knowledge in its community, building character, and preparing the next generation to take action in the world

Workplace	Expression	Outdoor Environment (Landscape)	Health, Wellness, Sustainability	Technology	Stewardship (Cost + Value)
Community & Connection: a welcoming space that brings our staff, students, families, and community partners together	Belonging, Warmth and Welcoming: express the love and inclusive nature of our culture; reinforce all are welcome here	Outdoor Program: outdoor meeting areas, pathways, and flexible activity areas for employees; play area for children	Encourage healthy choices: design elements that encourage or enhance physical and psychological health	Mobility: Infrastructure & technology that enables employee mobility	Balanced Stewardship: design for utility and functionality; look for ways to provide service to the community through design
Learning & Collaboration: a space that encourages learning from each other, the presence of great collaborative spaces	Presence of children: they are the heart of our work; space for children & the artifacts of their learning visible throughout	Garden: provide a garden space for vegetables and herbs	Sustainability Standard: Meet or exceed standards of the Washington State Sustainable Schools Protocol (WSSP)	Remote Work: Spaces and technology that support increased remote work and itinerant district employees	Education: Capture, communicate, and display our sustainable & health metrics with the community & visitors
Innovation: an environment that encourages trust building and diversity to allow new ideas to flourish	Humble: we are part of the learning ecosystem	Open yet Secure Building: provide security in the building while maintaining an open, friendly environment	Wellness: Promote and integrate Wellness strategies to optimize health for building occupants	Leverage technology: infrastructure & systems to capture professional learning for distribution across the district	Community Engagement: Meeting spaces are a community amenity in addition to the district's professional learning center
Daylight Access: prioritize daylight access for all	Storytelling: provide ways to tell the stories of our students and families		Social Sustainability: develop the heart of the building promoting attitudes of fairness, acceptance, and civic responsibility.		Flexibility: design the physical environment with future adaptability in mind

Workplace: Essential Qualities



FOCUS



LEARN



SOCIALIZE



COLLABORATE



REJUVENATE

Workplace: Essential Qualities



FOCUS



LEARN



SOCIALIZE



COLLABORATE



REJUVENATE

Community: Essential Qualities



OUTREACH



TEACH



HEALTH/WELLBEING



MULTI-CULTURAL



CARE

Design Precepts in Physical Space

Design Precepts Illustrated

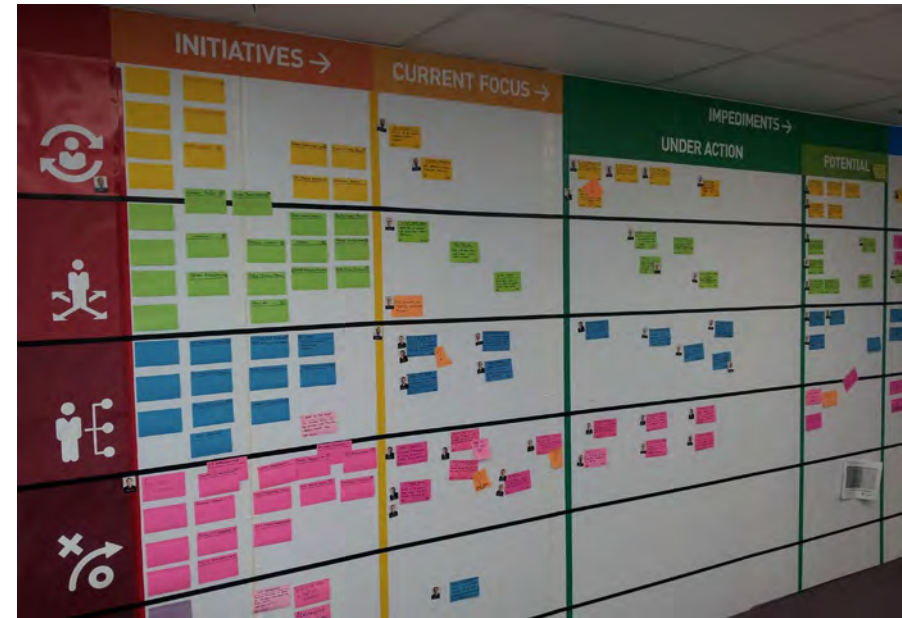


Community & Connection:
Spaces that bring a diversity of people together

Design Precepts Illustrated



Collaboration & Learning:
Variety of settings for individual learning style



Collaboration & Learning:
Make ideas and work process visible

Design Precepts Illustrated



Innovation:
Creating inspiring spaces



Innovation:
An environment of openness and transparency
Illustrates Daylight access

Design Precepts Illustrated



Belonging:
Celebrating our staff's contribution



Belonging:
A place for all

Design Precepts Illustrated




Presence of Children:
Outdoor play area visible at entry



Presence of Children:
Garden zone in the outdoor play area

Design Precepts Illustrated



Bellingham Public Schools
a collective commitment

the Bellingham Promise

vision
We, as a community, make a collective commitment to Bellingham's children. We will empower every child to discover and develop their passions, contribute to their community, and achieve a fulfilling and productive life.

mission
We collectively commit that our students are cared for and respected, and that they will graduate from our schools prepared for success. All students will be exceptional in their own way, with strong character, a passion for learning, and ready for the widest range of educational and vocational options to support a diversity of life choices.

core beliefs
We believe:

- all children should be loved,
- the whole child is important,
- every child can learn at high levels,
- early learning and development are critical,
- learning is lifelong and essential to a high quality of life,
- compassion and service build community,
- teaching children to do their best involves self-reflection and reaching higher,
- diversity enhances a strong and healthy community, and
- together we achieve more than alone.



Storytelling:
Bellingham Promise expressed in the
Community Heart

Storytelling:
Finding creative ways to showcase our purpose

Design Precepts Illustrated



Outdoor spaces:
Connecting to mission and purpose



Gardens:
Edible gardens, teaching opportunity

Design Precepts Illustrated



Encourage Healthy Choices:
Graphic displays



Encourage Healthy Choices:
Treadmill Meetings



Wellness:
Biophilia, incorporating living things

Design Precepts Illustrated



Mobility:
Getaway for focus



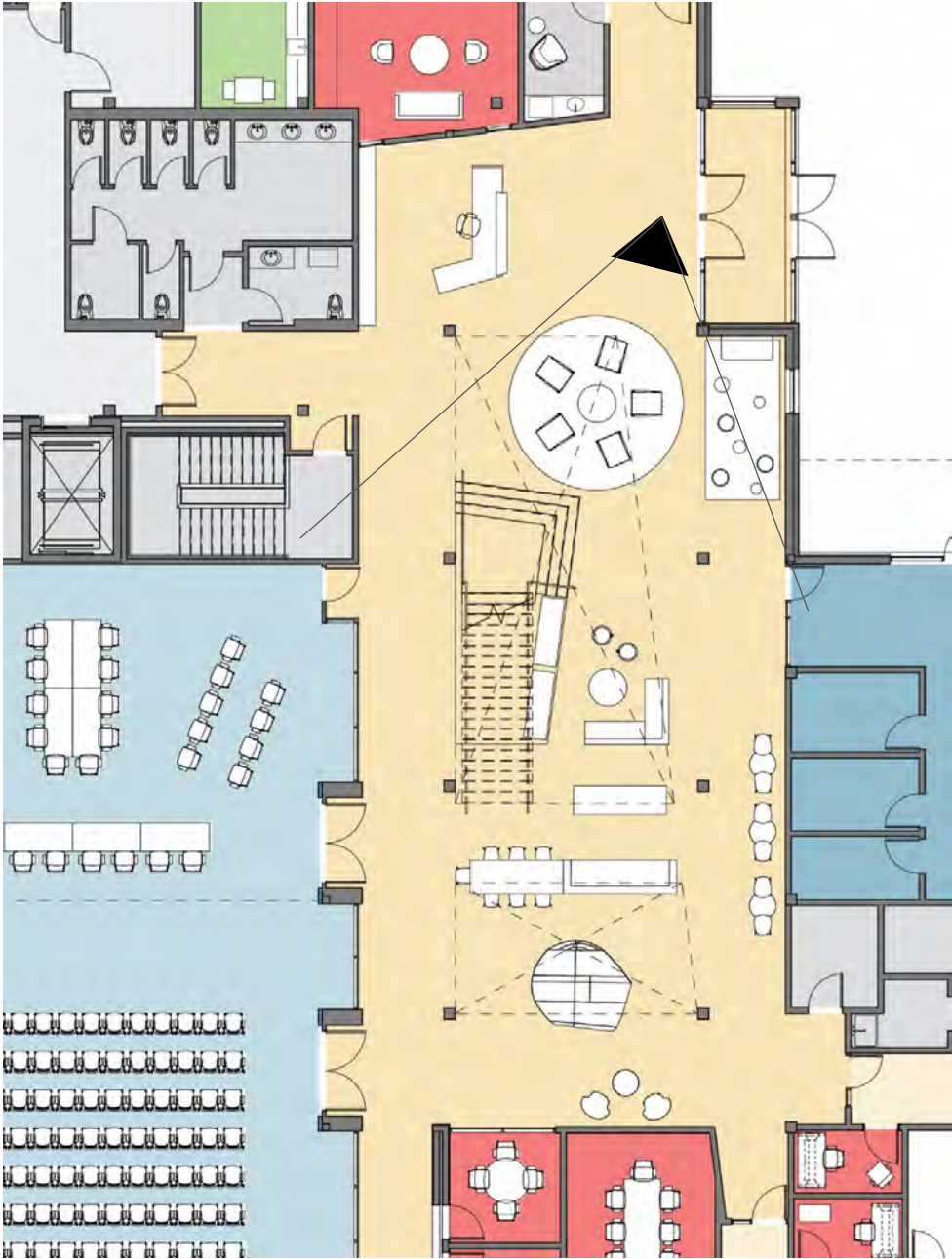
Remote Work:
Connecting virtually with our colleagues



Touchdowns:
Space for our itinerant colleagues

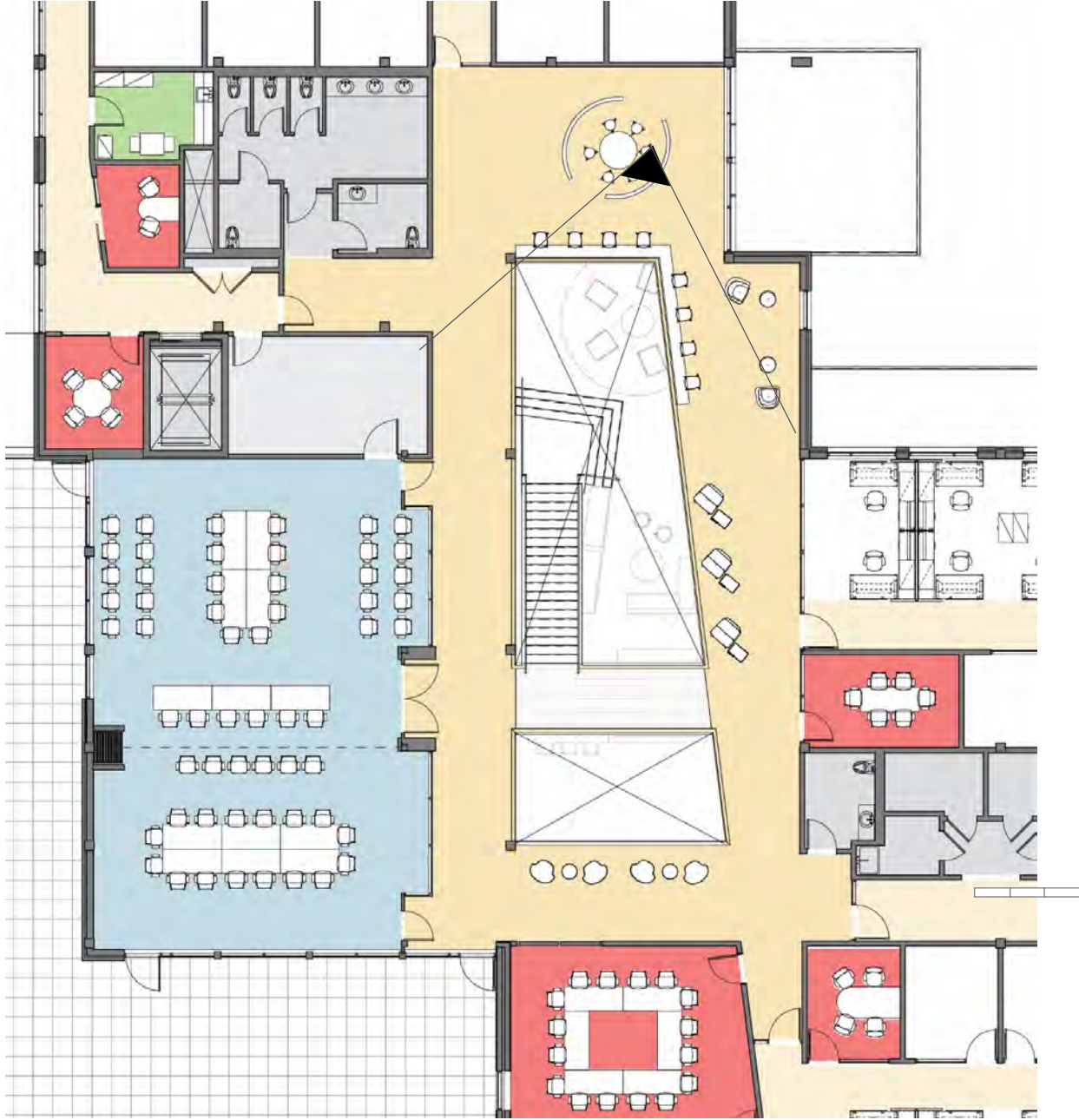
Community Heart Design

Main Level Plan





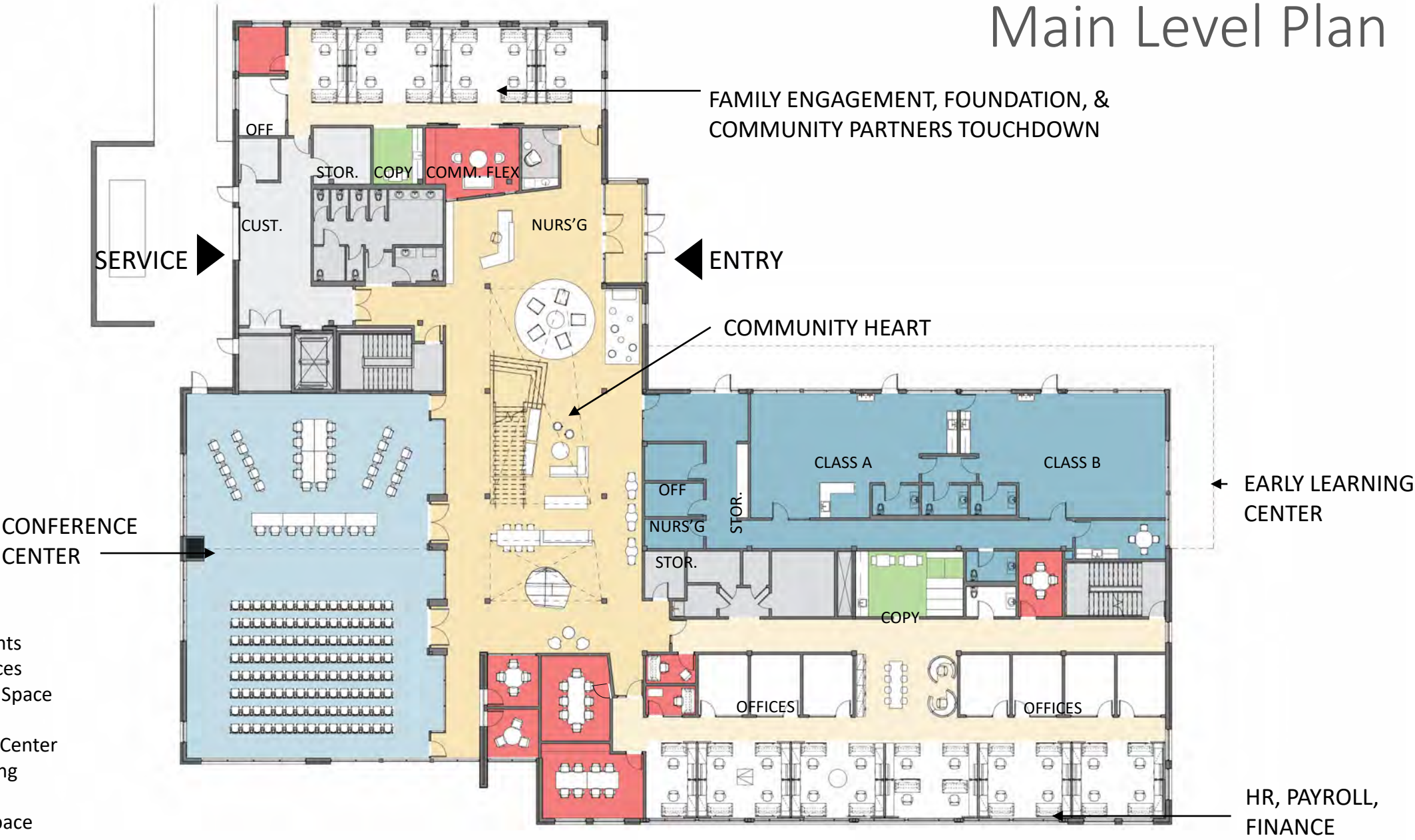
Upper Level Plan



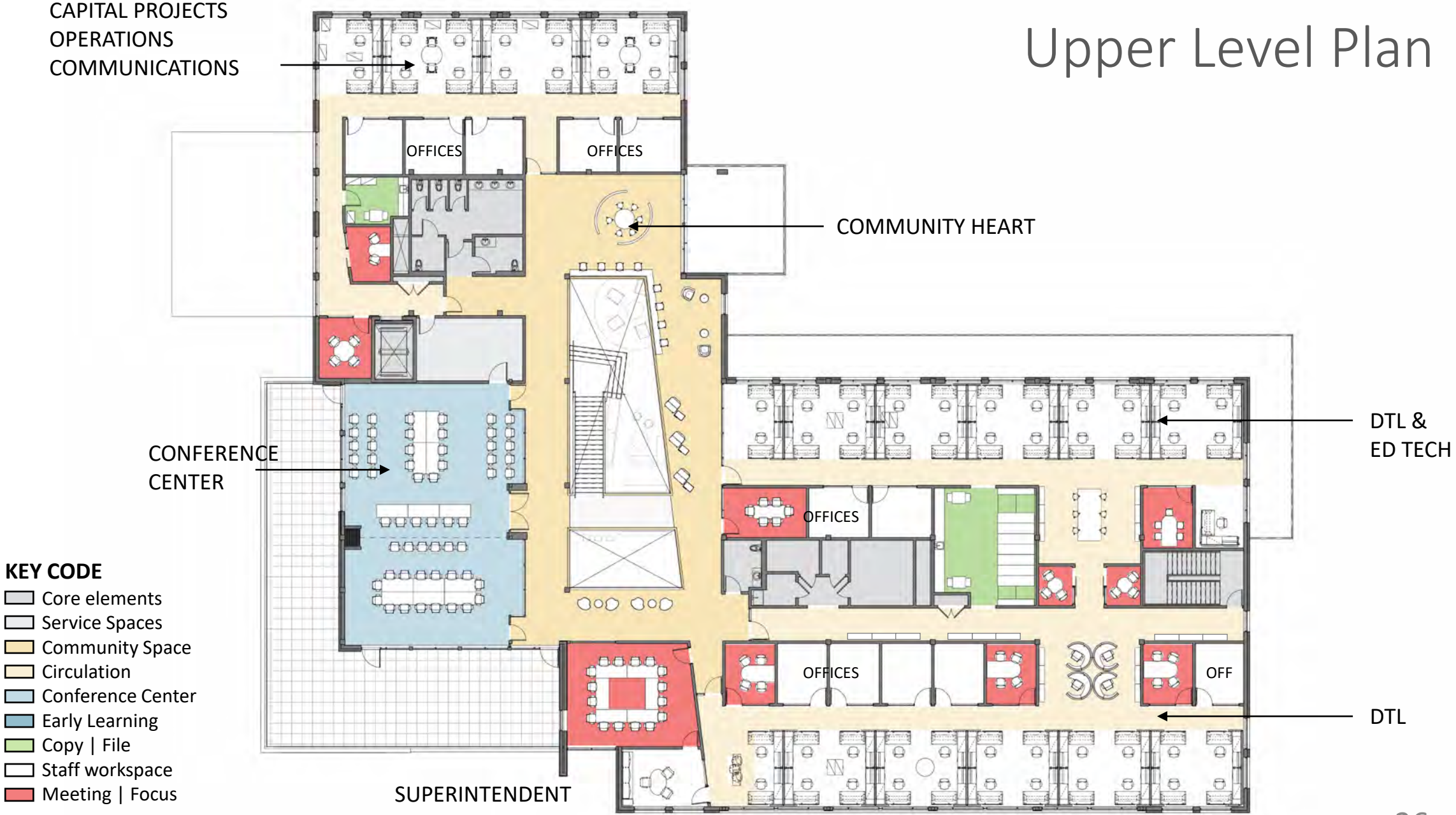


Floor Plans

Main Level Plan



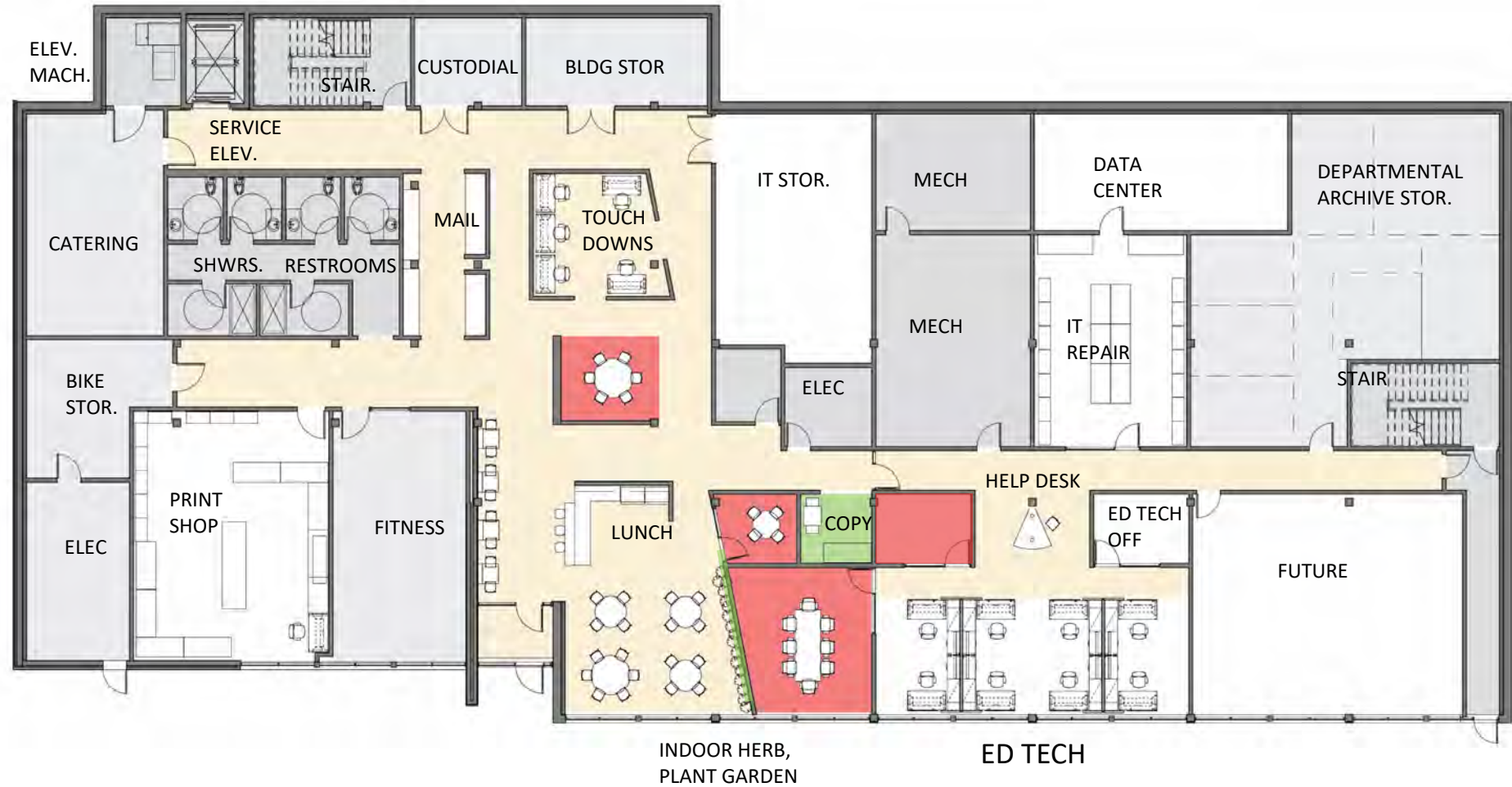
Upper Level Plan



Schematic Design Plan – Lower Level

KEY CODE

- Core elements
- Service Spaces
- Community Space
- Circulation
- Conference Center
- Early Learning
- Copy | File
- Staff workspace
- Meeting | Focus



Preliminary Workstation Design

Thought Starter for Workstations

DUAL OR LG MONITORS ON
MONITOR ARM

SIT TO STAND DESKS

FILE & BOX DRAWERS

PANELS FOR SEATED
PRIVACY



Thought Starter for Workstations

WOULD STILL HAVE DUAL OR LG MONITORS ON MONITOR ARM AS SHOWN IN FIRST OPTION



CAN BE SIT TO STAND
DESK

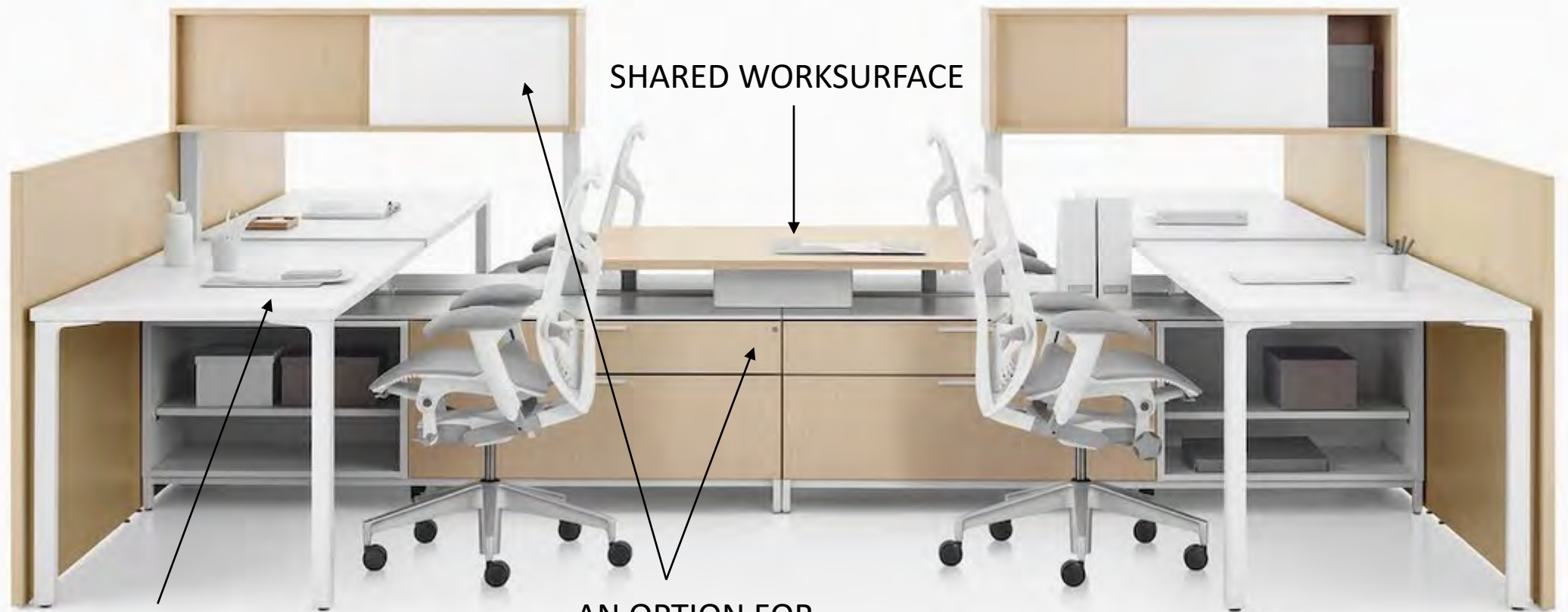
AN OPTION FOR
ADDITIONAL STORAGE

CAN BE FILE & BOX
DRAWERS

PANELS FOR
SEATED
PRIVACY

Thought Starter for Workstations

WOULD STILL HAVE DUAL OR LG MONITORS ON MONITOR ARM AS SHOWN IN FIRST OPTION



CAN BE SIT TO STAND
DESK

AN OPTION FOR
ADDITIONAL STORAGE

SHARED WORKSURFACE

Questions

1. What delights you the most in what you have seen so far?
2. What curiosities do you have?
3. What concerns remain that you would like explored further?

Building Design
