

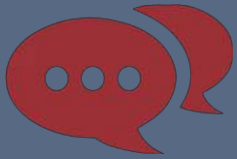


Elementary School #15
Design Advisory Committee – Meeting #6
March 2nd, 2023

Let's design...
Elementary School #15»

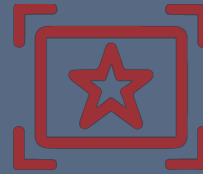


Agenda



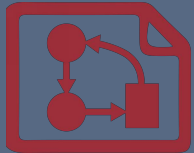
Community Meeting

Feedback



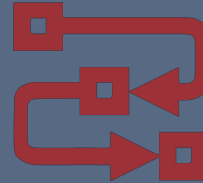
Summary of Work

DAC Process



Site/Building Plan

Explore building development



Wrap Up and Closing

What comes next after the visioning process

Community Meeting



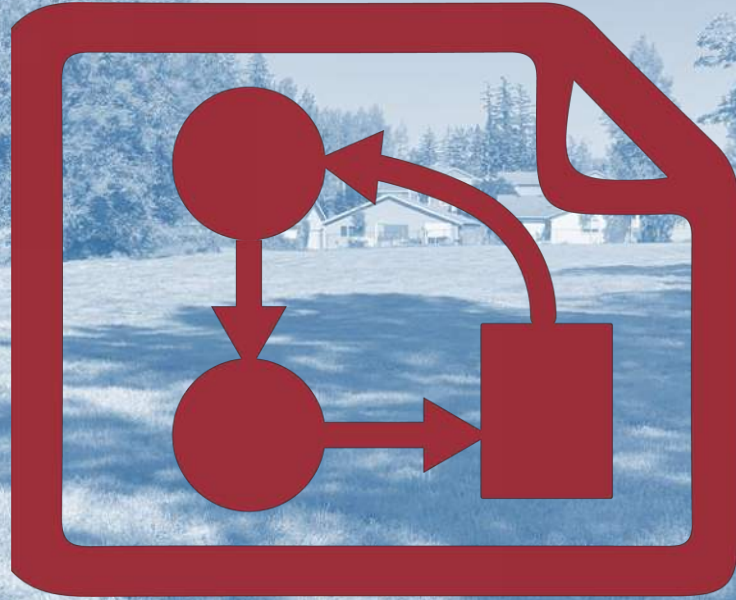
DAC Process



Bellingham Public Schools
Elementary School #15 Education Specifications

- Meeting #1**
October 27th, 2022, 3:00-5:00PM @ Cordata Elementary School
- Introduction to Education Specification
 - Small Group Activities:
 - Wishes and Wonders
 - What are the Top 5 Characteristics of the Building and the Site
 - Learning in Action
- Meeting #2**
November 10th, 2022, 3:00-5:00PM @ Alderwood Elementary School and Sunnyland Elementary School
- School Tours:
 - Alderwood Elementary School
 - Sunnyland Elementary School
- Meeting #3**
December 15th, 2022, 3:00-5:00PM @ Happy Valley Elementary School
- Welcome and share Back from School Tours
 - Emerging Themes
 - Design Goals and Keys to Design
 - Introduction to Numeric Programming
- Meeting #4**
January 19th, 2022, 3:00-5:00PM @ Park View Elementary School
- Narrative Program
 - Small Group Session: Site Charrette
- Meeting #5**
February 2nd, 2022, 3:00-5:00PM @ Birchwood Elementary School
- Detailed Space Requirements
 - Site Layout Review
- Meeting #6**
March 2nd, 2022, 3:00-5:00PM @ District Office
- Final Design Goals
 - Site Plan

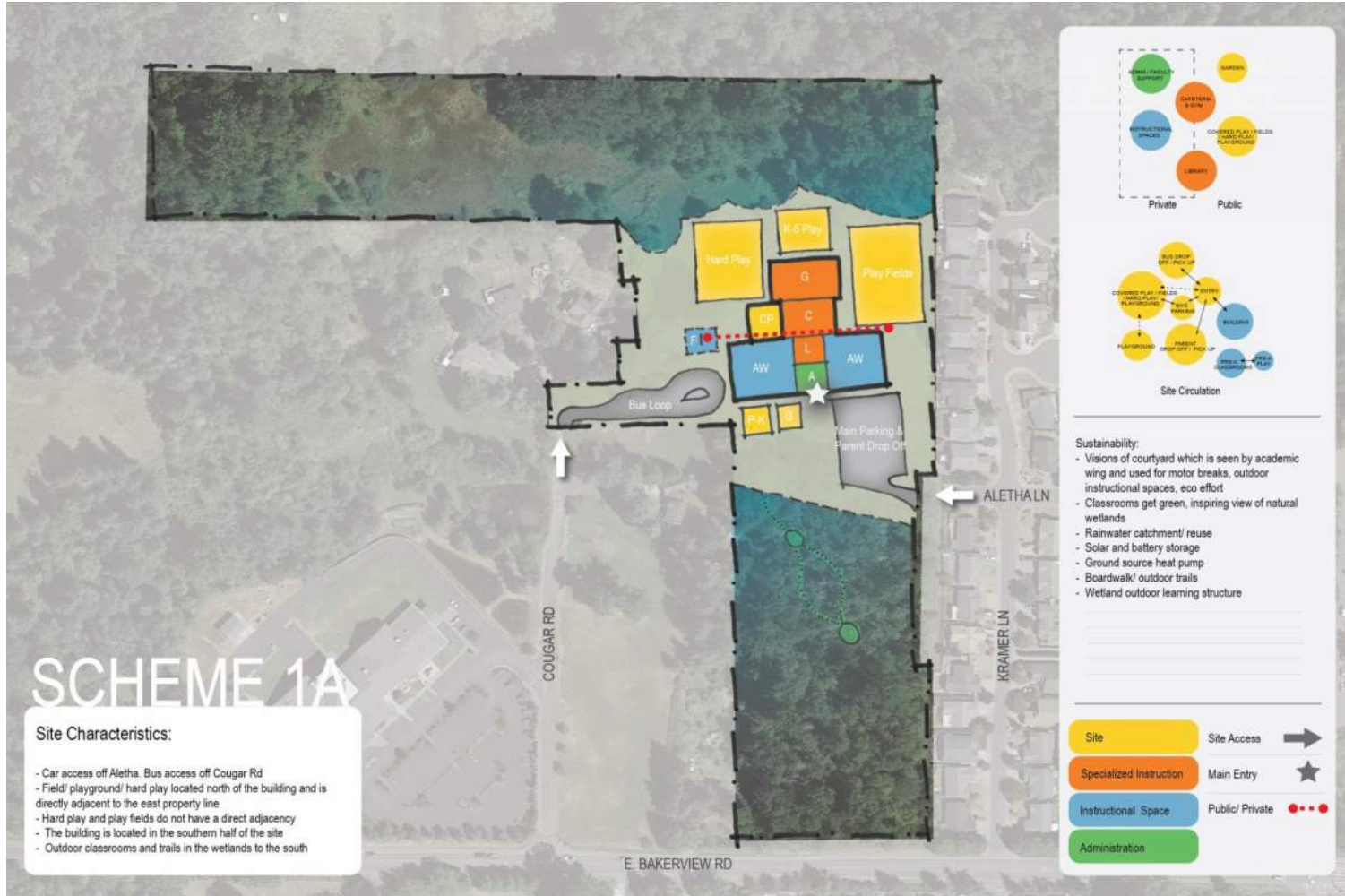
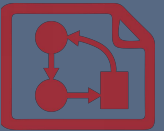




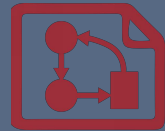
Site/Building Plan

Site and Building Plan.

Site Charette – Scheme 1A



Site Charette – Scheme 1B



SCHEME 1B

- Site Characteristics:**
- Car access off Aletha. Bus access off Cougar Rd
 - Field/ playground/ hard play located on the west side of the site
 - Hard play and play fields have a direct adjacency
 - The building is located in the southern half of the site
 - Public spaces adjacent to east property line
 - Outdoor classrooms and trails in the wetlands to the north

Private Public

Site Circulation

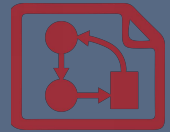
Sustainability:

- Visions of courtyard which is seen by academic wing and used for motor breaks, outdoor instructional spaces, eco effort
- Classrooms get green, inspiring view of natural wetlands
- Rainwater catchment/ reuse
- Solar and battery storage
- Ground source heat pump
- Boardwalk/ outdoor trails
- Wetland outdoor learning structure

- Site (Yellow)
- Specialized Instruction (Orange)
- Instructional Space (Blue)
- Administration (Green)

- Site Access (Arrow)
- Main Entry (Star)
- Public/ Private (Red Dots)

Site Charette – Scheme 2



+

- Like buses coming off of Aletha and drop off of Cougar
- Light and views of Baker and nature from Academic wing are great
- Sound buffer between high density neighborhood play space
- Public spaces all together and near church for possible overflow/
- Public space further from Aletha Housing
- Car traffic on Cougar rather than Aletha
- Public spaces and outdoor play near possible overflow church parking
- Like bus drop off on Aletha

?

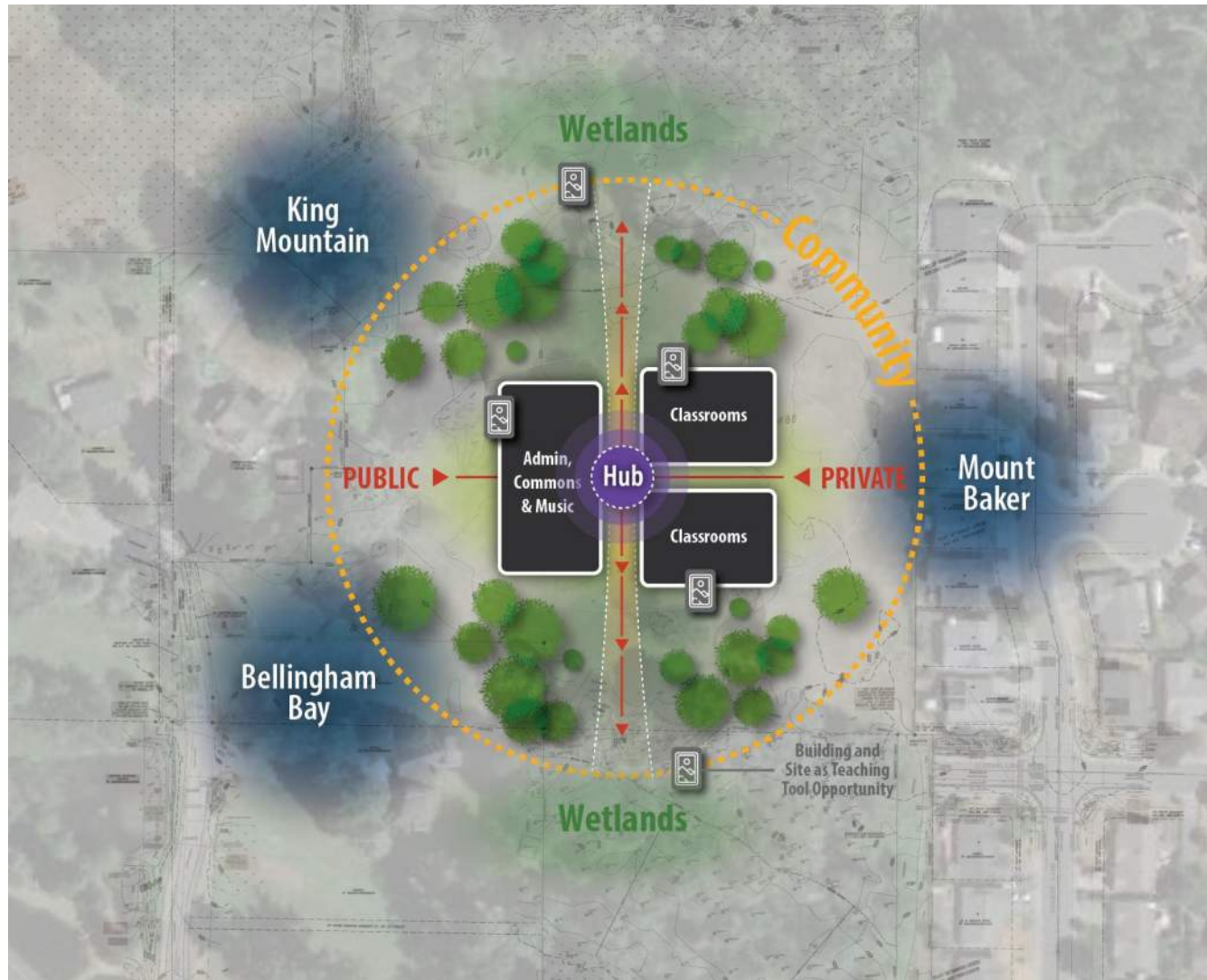
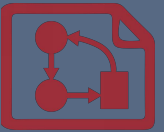
- Could we angle the academic wing?
- Could we move K-5 play further first contact space.
- Will there be sufficient parking for parent pick-up/drop off?
- Can there be a large covered area at the entrance?
- Garden location – not shaded by building (2 story part)

Δ

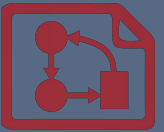
- Limited visibility to play areas during school day and security concerns with play area so close to parking during school day
- Garden will be shaded by the building
- Swap play areas to north and gym/ cafeteria to south
- Safety concerns with play up front



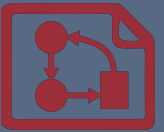
Diagrams



Site Plan

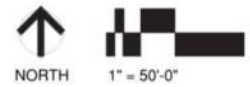


Activity +?Δ



ELEMENTARY SCHOOL #15 SITE PLAN 03/02/2023

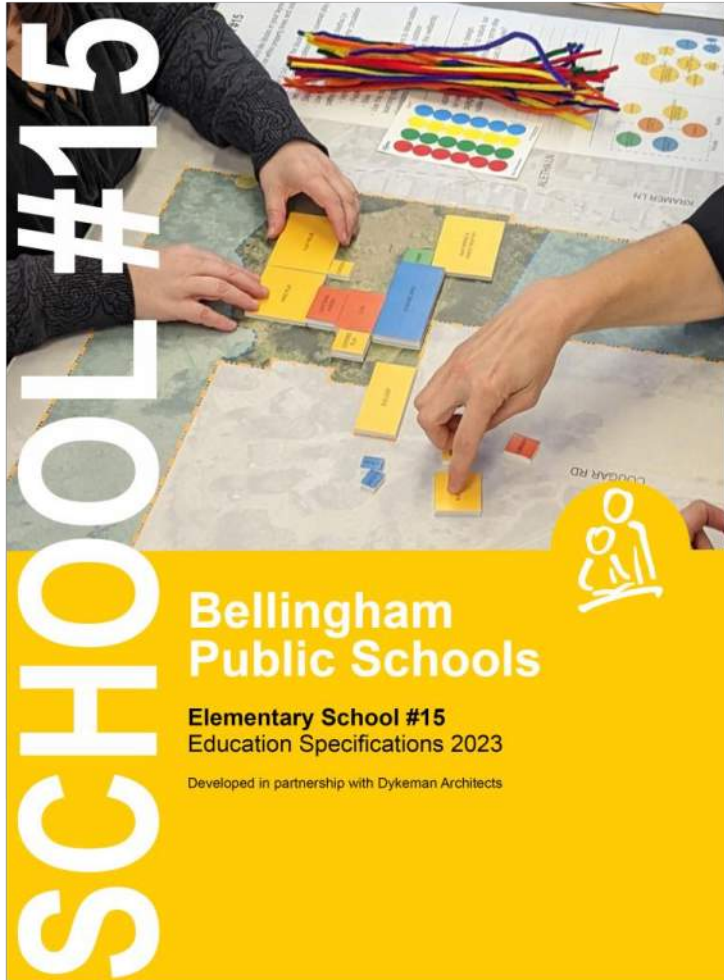
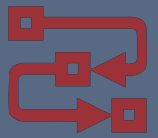
- PROPERTY LINE
- WETLAND BUFFER
- HUB
- CLASSROOMS
- SPECIALIZED INSTRUCTION
- ADMINISTRATION
- COVERED PLAY





Wrap up & Closing

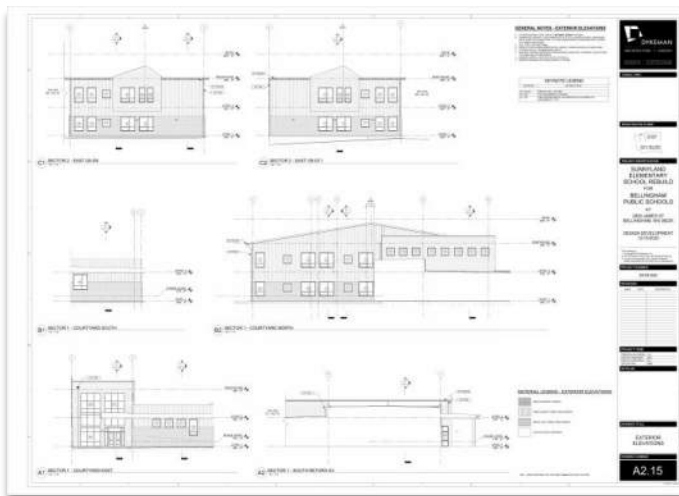
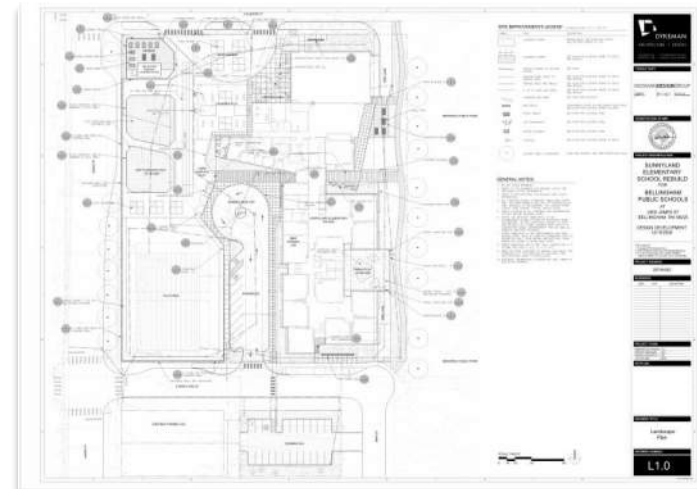
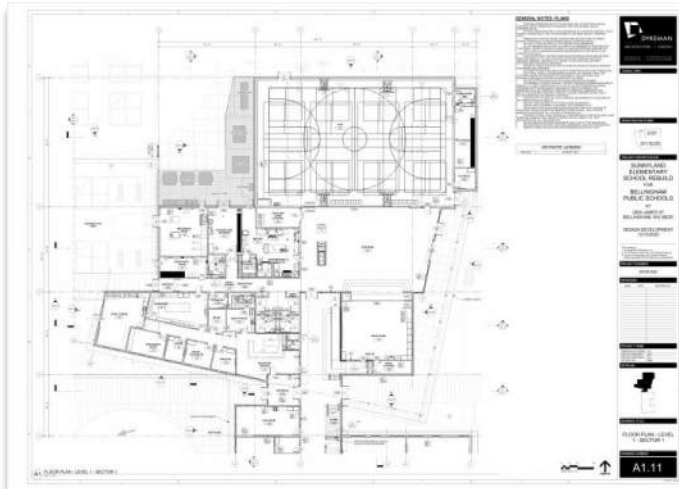
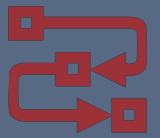
What are our next steps.



PP	Project Participants	
S1	Project Rationale	
S2	Community Data	
S3	Educational Goals	
S4	Design Goals	
S5	Numeric Program	
S6	Narrative Program	
	Summary	
	Site Circulation Layout	
	General Classrooms	
	Preschool/ Kindergarten Classroom	
	Special Education	
	Library	
	Gymnasium	
	Administration	
	Counseling	
	Health	
	Faculty Support	
	Music Classroom/ Cafeteria (Commons)/ Stage	
	Custodial	
	Covered Play Area/ Hard Play Surface/ Playground/ Play Field	
S7	Detailed Space Requirements	
	Introduction	
	Instructional Spaces	
	Administration	
	Specialized Instruction	
	Specialist	
	Building Support	

TOC
Table of Contents

Schematic Design





Thank you!