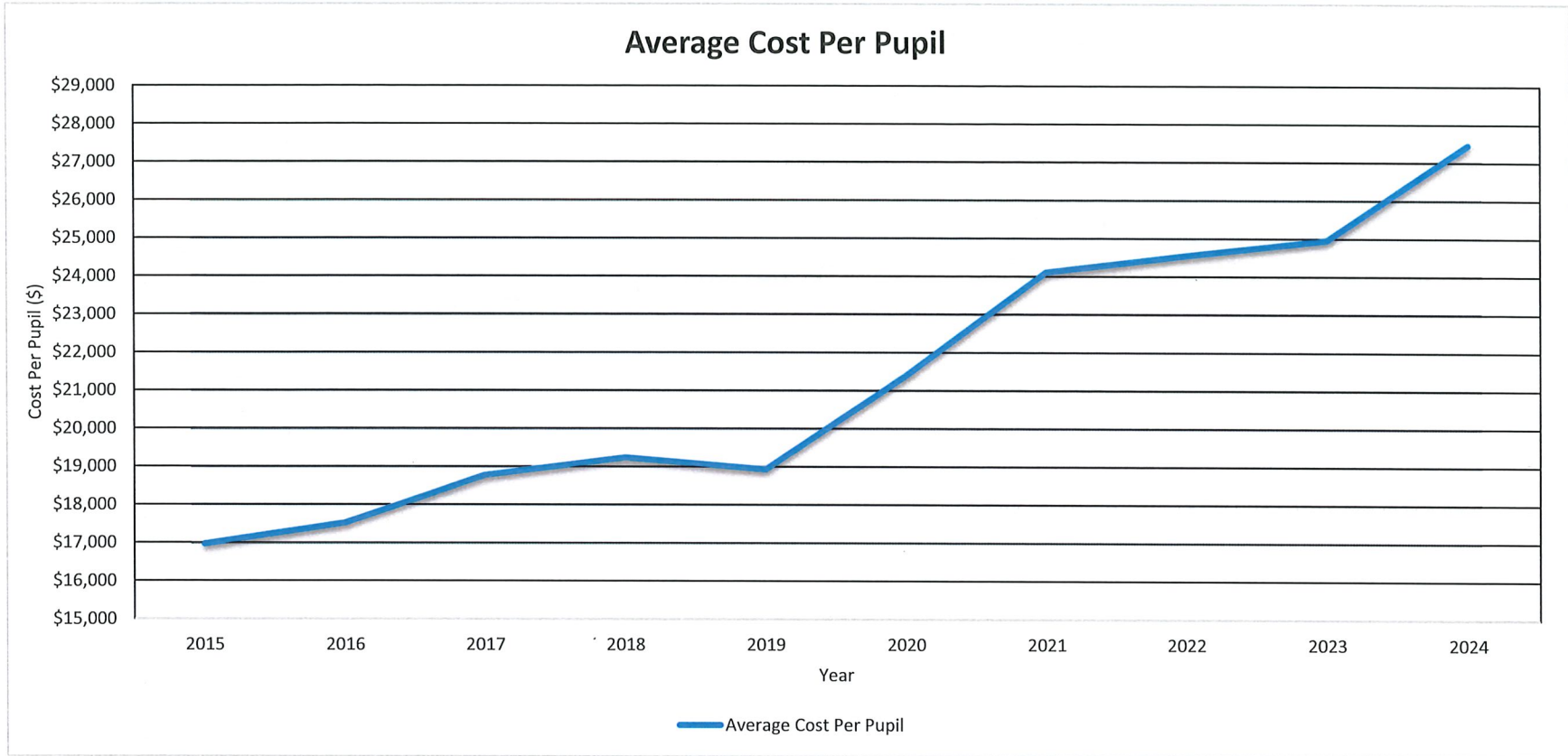
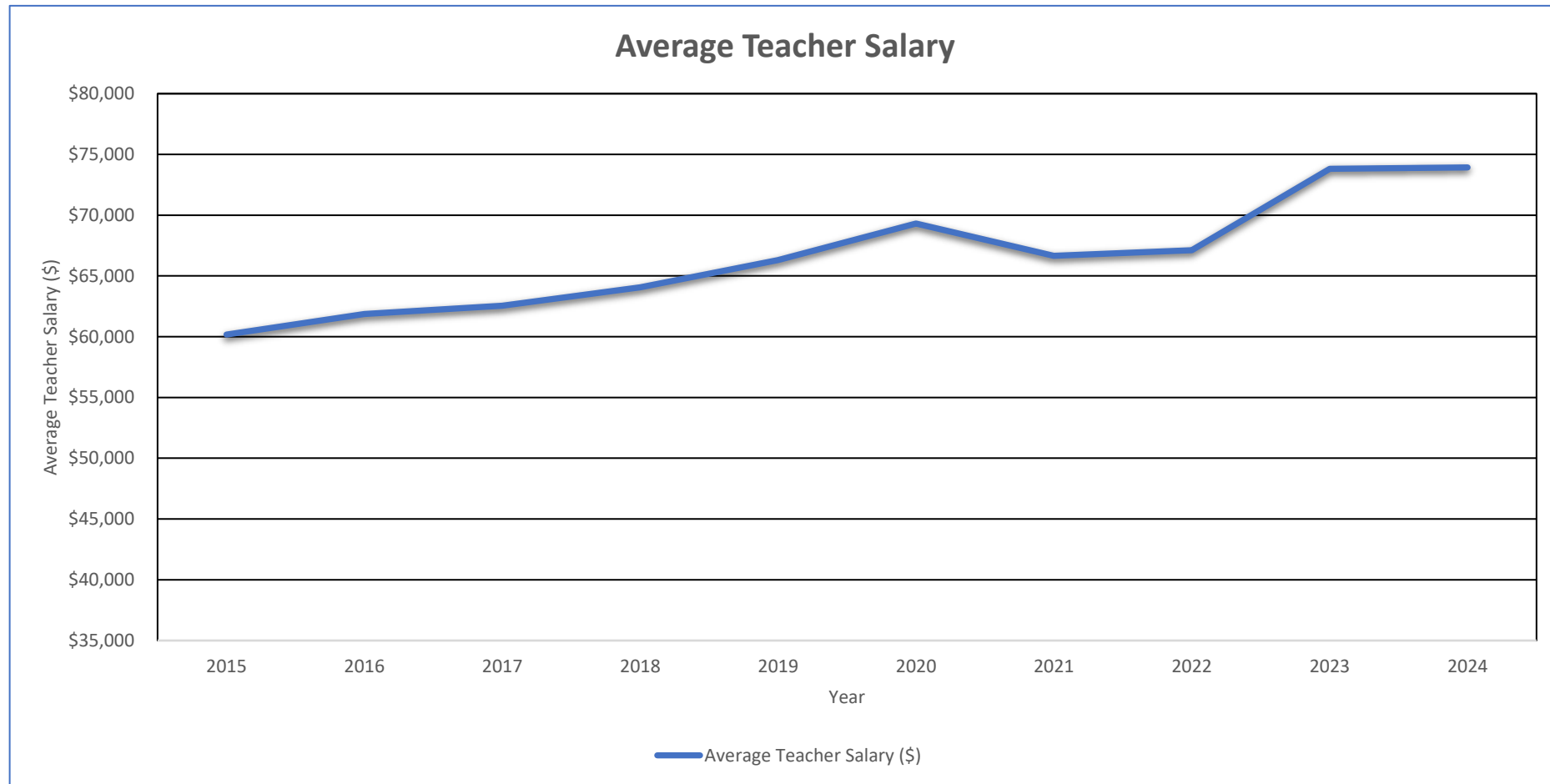


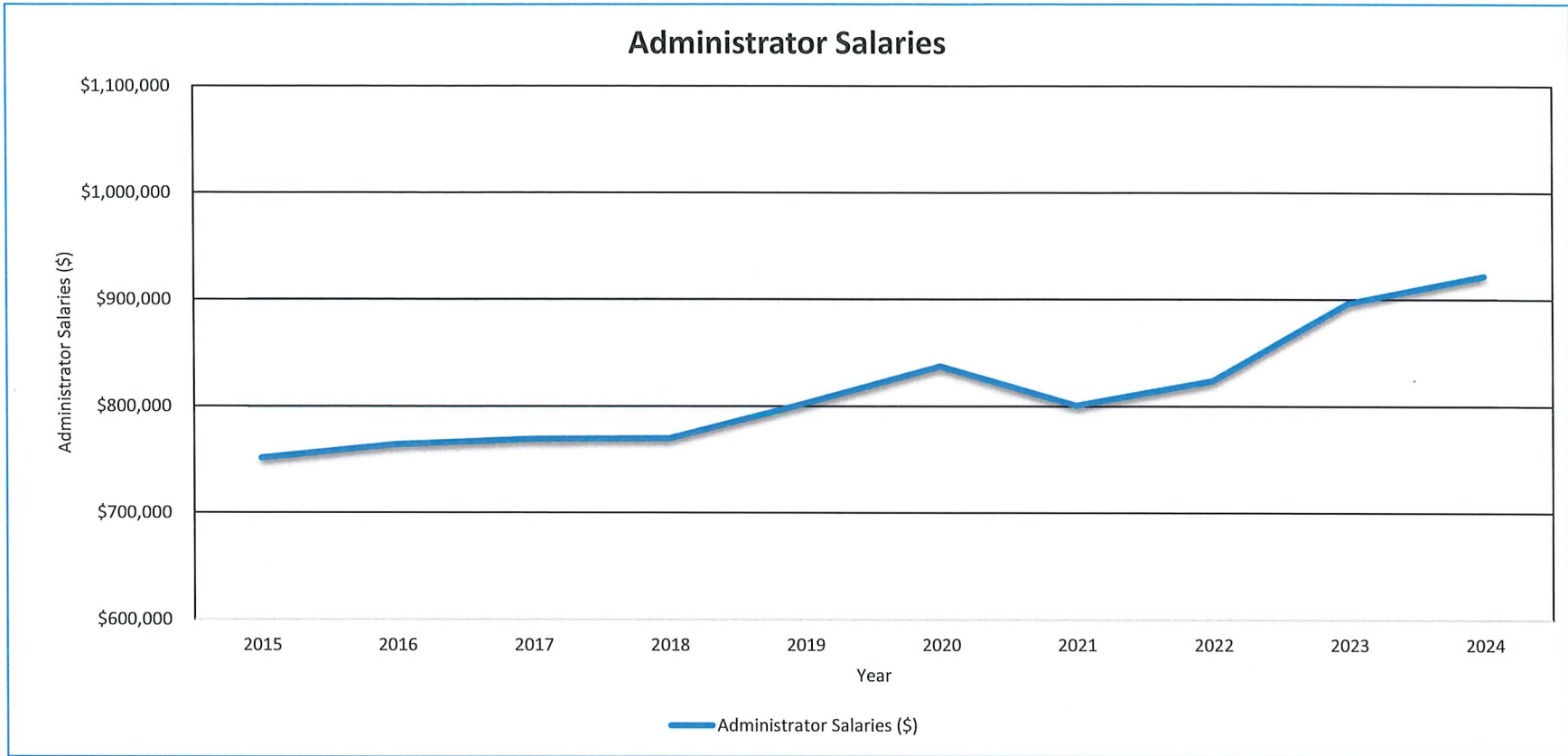
Mandatory Report to Voters on School Expenses  
Governor Wentworth Regional School District



Mandatory Report to Voters on School Expenses  
Governor Wentworth Regional School District



Mandatory Report to Voters on School Expenses  
Governor Wentworth Regional School District



**Top Administrator Salaries (2024-2025)**

<b>Administrator Title</b>	<b>Current Salary</b>
<b>Superintendent</b>	<b>\$164,451</b>
<b>Asst. Superintendent</b>	<b>\$148,934</b>
<b>High School Principal</b>	<b>\$140,158</b>
<b>SPED Director</b>	<b>\$126,905</b>