
ALICE

Parent Information Meeting

Mount Vernon City Schools

Purpose of the this Morning

- Past practice...was it good enough?
 - Review the components of ALICE
 - Lockdown Protocols
 - Things to Consider
 - Your Room Layout
 - Building Floor Plans
 - Evacuation Exits
 - Rally Points
-

Past Practice...Was it good enough?

- **Announce: “Code Red Lockdown”**
- **Move students to nearest classroom or office.**
- **Lock doors, turn off lights, and pull blinds or shades.**
- **Huddle students in a safe corner and keep quiet.**
- **Take attendance and report.**
- **Wait for the “All Clear”**



Active Shooting Incidents 2000-2014



Welcome to

**“It’ll NEVER Happen Here”
U.S.A.**

Proud Prevention Training by:
Countermeasure Consulting Group, LLC

Lockdown is No Longer Enough

US Department of Education aligns with ALICE

“There are three basic options: run, hide, or fight.”

Ohio Attorney General School Safety Task Aligns with ALICE

“Lockdown is not a stand-alone defense strategy.” [Page 50] “When securing in place, this procedure should involve barricading the door and readying a plan of evacuation or counter tactics should the need arise.”

International Association of Chiefs of Police (IACP) Aligns with ALICE

“Active resistance is fighting back with any objects of opportunity, such as chairs, desk, and books. Active resistance is a last resort and should only be used if potential victims are trapped in a room with an active shooter, there are already victims, and all other personal survival recommendations are no longer an option.”

ALICE Advantages

- **Integrates technology with common sense and human ACTION.**
 - **Provides a plan of ACTION to increase chances of survival, increases confidence, and reduces fear.**
 - **Vastly Diminishes the odds of an intruders success due to increased preparedness and increased skill level required.**
-

A L I C E

Waltham City Schools
Video

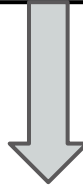
ALICE Review



ALERT. Use Plain and Specific Language. Avoid Code Words

ATTENTION Teachers:

We are in Lockdown... We are in Lockdown
Provide as much information as possible.



Call 911 to Notify Law Enforcement

Who can initiate an ALERT?

- Law Enforcement
 - Administration
 - If witnessing an event Administrators will verbally initiate an Alert. “We are in Lockdown” when safe notify the office immediately.
 - When the office is notified we will use PA, Text, and/or Email to communicate...911 will be called
 - Teachers
 - If witnessing an event Teachers will verbally initiate an Alert. “We are in Lockdown” When safe notify the office immediately.
 - Students are encouraged to report any suspicious or threatening behavior to their teacher or the office immediately.
-

ALICE Review



LOCKDOWN. Barricade the Room. Silence Mobile Devices. Prepare to EVACUATE or COUNTER if Needed

We have identified two types of Lockdowns:

- 1) **“Lockdown”** - An intruder is in the building and ALICE protocols must be used.

 - 2) **“Modified Lockdown”** - The building is on high alert to potential threats.
 - Classroom doors are locked. Students are to remain in the room.
 - Outside activities & recess are suspended. Exterior doors secured.
 - Teachers should continue teaching and wait for further instructions.
-

Lockdown Protocols

In the Classroom

- **DIRECT** all students from hallways into classroom.
- **LOCK** all exterior doors.
- **BARRICADE** the doors.
- **CLOSE** windows, blinds.
- **STUDENTS** should secure objects to throw at a potential intruder and move away from the doors.
- **BE QUIET!** Wait for further information.
- **CARE FOR THE STUDENTS** -Calm and reassure upset students.

DO NOT OPEN exterior doors for any reason until you are released by Law Enforcement. Protocol: Law Enforcement will identify themselves and open your door with a key.

EVACUATION If you receive information that would allow for evacuation do so in a Quick and Quiet manner.

Lockdown Protocols

Special Locations

- **GYMNASIUM:** Students should be moved into the locker rooms or Evacuate.
- **LUNCH ROOM:** Students should be directed to building specific safe areas or Evacuate.
- **OUTSIDE:** Students should immediately be directed to the Rally Point.
- **RESTROOMS:** Students/staff should move into a stall, lock the stall door and crouch on the toilet so feet, hands and head are hidden from view or Evacuate.
- **HALLWAYS:** Students should move into closest classroom immediately or Evacuate.
- **LIBRARY:** Students should be directed to building specific safe areas or Evacuate.

***Students who get locked out of classrooms should exit the building immediately and report to the Rally Point.**

***If one building initiates a LOCKDOWN situation the other building will immediately proceed to a MODIFIED LOCKDOWN and await further instruction.**

ALICE Review

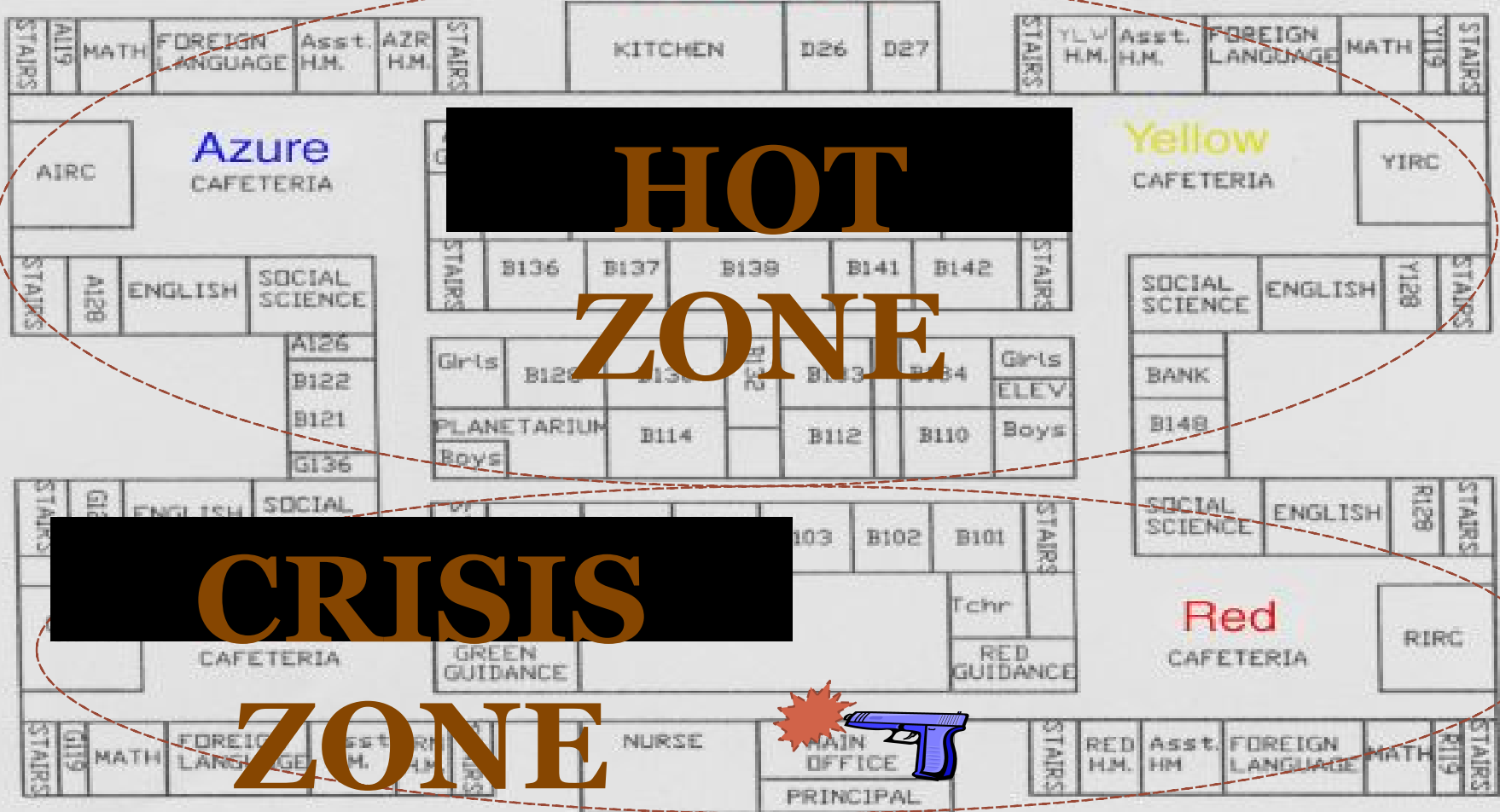


INFORM. Communicate the Shooter's Location in Real Time.

Information should always be clear and direct communicating the location of the intruder, what the intruder is wearing, etc.. Effective information can keep the shooter off balance, giving people in the building more time to further lockdown, or evacuate to safety.

Active shooters work alone 98% of the time. If the shooter is known to be in an isolated section of a building, occupants in other areas can safely evacuate while those in direct danger can lockdown and prepare to counter. Knowledge is the key to survival.

First Floor



HOT

ZONE

CRISIS

ZONE



ALICE Review



COUNTER. Create Noise, Movement, Distance and Distraction with the Intent of Reducing the Shooter's Ability to Shoot Accurately.

ALICE does not endorse staff and students fighting an active shooter unless confronted directly in a life-and-death situation. Counter is a last-ditch and worst-case scenario option.

Counter focuses on disruptive actions that create noise, movement, distance and distraction with the intent of reducing the shooter's ability to shoot accurately. Creating a dynamic environment decreases the shooter's chances of hitting a target and can provide the precious seconds needed in order to evacuate.

Shooting is a Skill

- We can interrupt that skill !
- Don't give the shooter a static target.
- If the shooter can't see they can't obtain the sight picture.
- Moving targets are hard to hit.
- Why be the fish in the barrel?



Counter Techniques

- Students should secure any object which can be thrown at an intruder. (chairs, books, bags, etc.)
 - If an intruder attempts to enter the room students should throw their objects at the intruder and move to another location in the room.
 - If age appropriate and as a last resort students and staff should swarm and tackle the intruder when distracted by thrown objects.
 - If the weapon is taken away from the intruder it should be placed in the teachers desk drawer or in waste basket turned upside down.
-

ALICE Review



EVACUATE. When Safe to Do So, Remove Yourself from the Danger Zone.

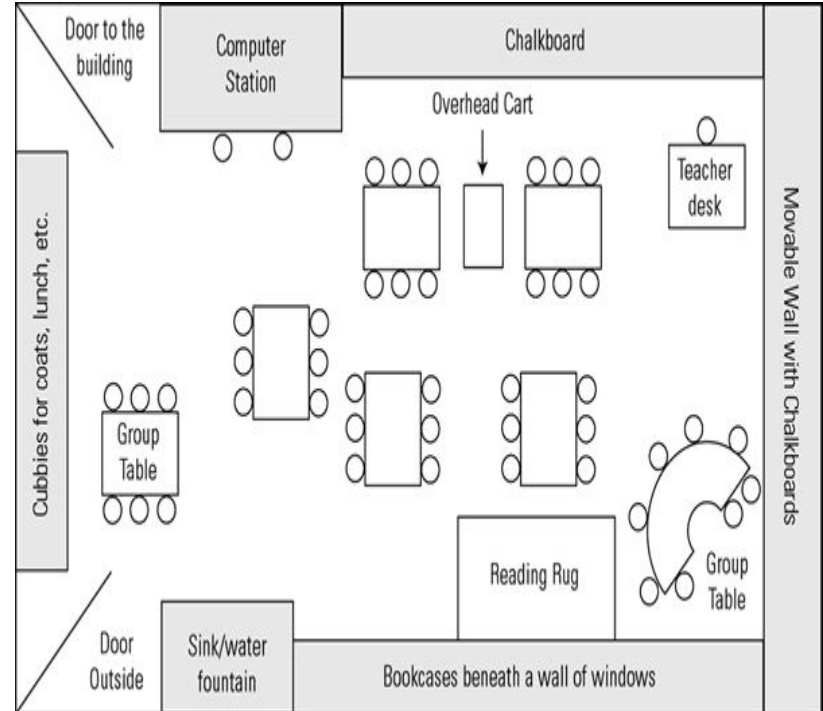
- Based on Information Provided teachers will ultimately determine whether their classes will evacuate or remain in a counter ready lockdown.
 - Evacuation routes and Rally Points must identified.
 - Once a decision to evacuate is made it must be done in a Quick and Quiet manner.
 - When exiting the building students should have their hands open and extended over their heads moving in a zig-zag pattern to the rally point.
 - Teachers should take with them a “Go Bag” complete with student rosters.
-

Additional Considerations for Teachers

- Classroom Layout...What is your room like?
 - Building Floor Plans...Do you know where room 106 is?
 - Evacuation Exits...Identify your closest exits.
 - Rally Points...Take a walking tour
-

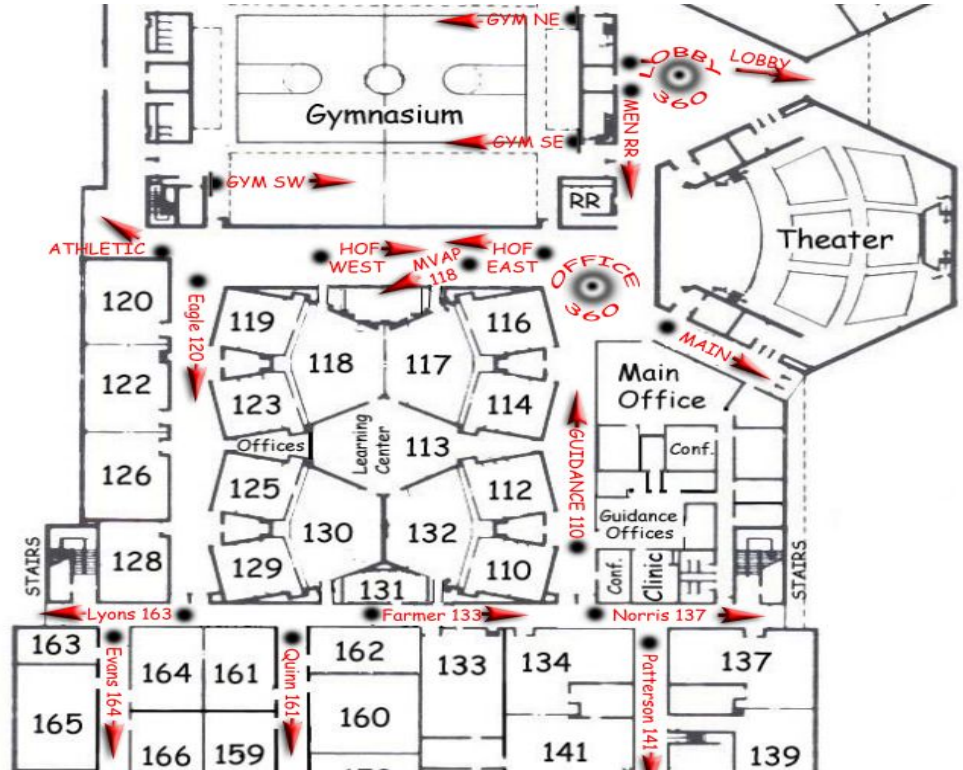
Classroom Layout

- Review your classroom layout...
- Can you redesign your classroom to better facilitate for a barricade situation.
- Identify objects that students can use in case of a counter situation.



Building Floor Plans

- Familiarize yourself with your building floor plans.
- This will be essential during the Alert and Information stages.



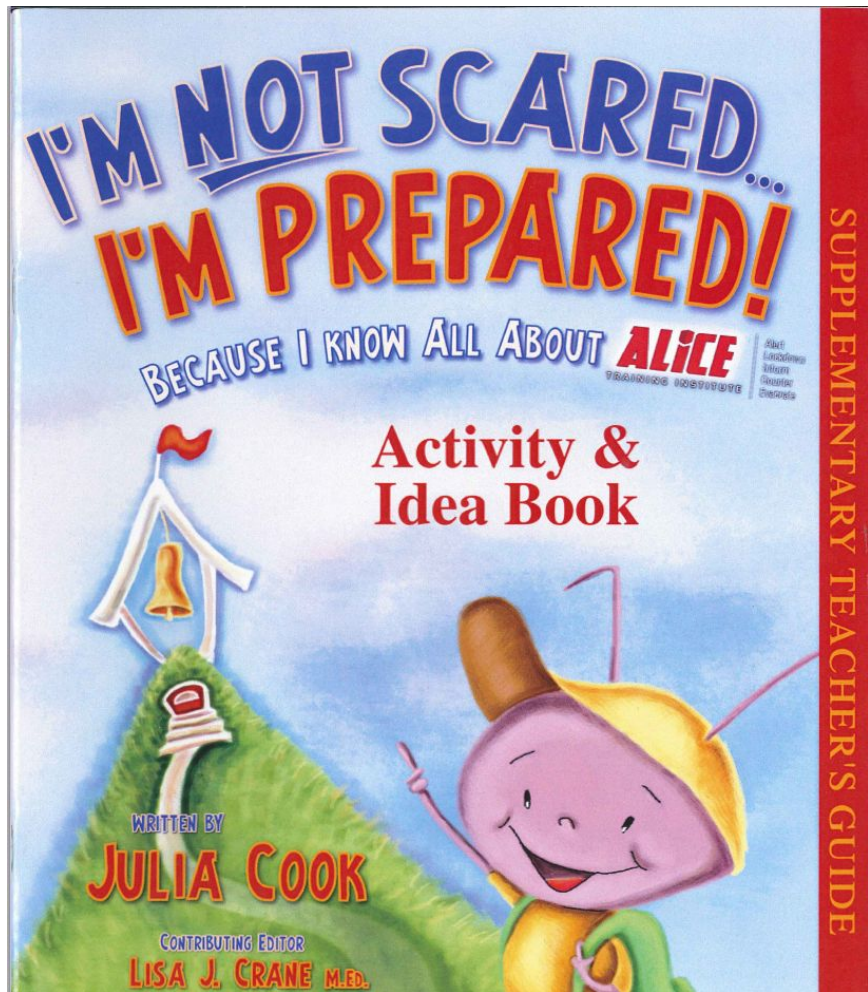
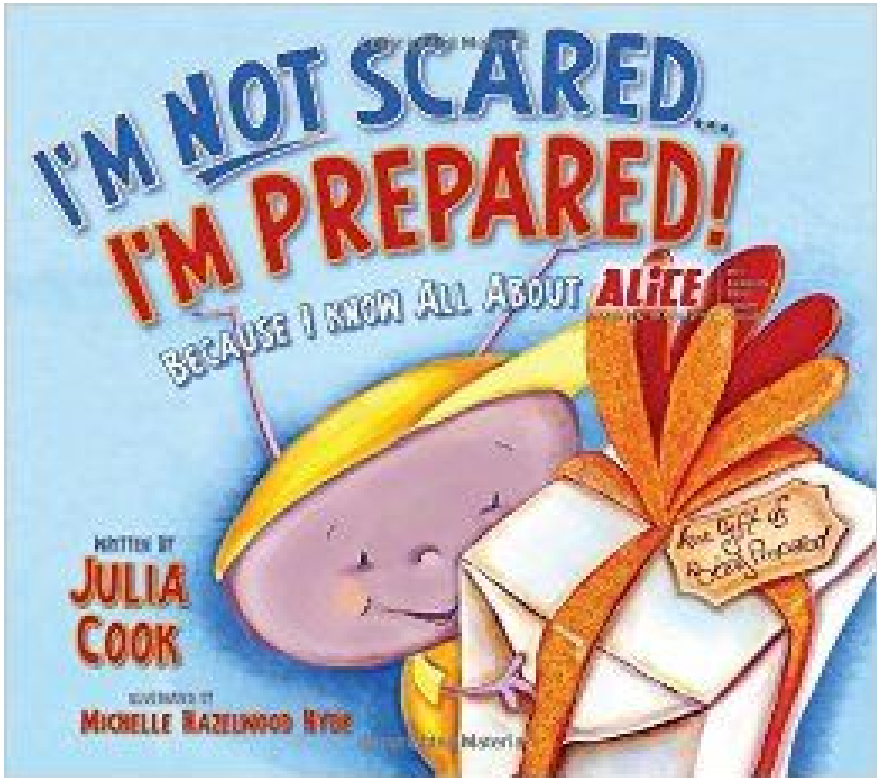
Evacuation Routes and Rally Points

- Determine your evacuation routes and discuss with staff and students...Keep in mind special needs students!
 - Identify your building Rally Points.
 - “Take a walk” to your building Rally Point to identify potential routes and special considerations.
 - Once at the Rally Point determine how you will organize your students and take attendance.
-

Lesson Plan for Students

Develop age level appropriate lesson plans for ALICE training specific to your buildings.

- Review the ALICE acronym and protocols.
 - Develop a plan to practice three (3) scenarios.
 - Lockdown and Barricade.
 - Lockdown, Barricade, and prepare to Counter
 - Evacuate
 - Practice regularly
 - Communicate with Parents
-



SUPPLEMENTARY TEACHER'S GUIDE

ALICE

Your Safety and the Safety of our Students is our number one priority!

Thank You
