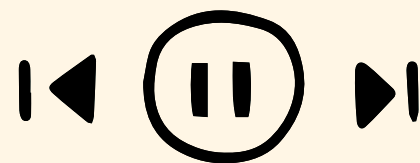


● ○ ○

# THE MONTHLY REWIND

**JANUARY 2026**



**DID YOU KNOW???**



January 24 is National  
**PEANUT BUTTER** day?

# MEET OUR NSLP TEAM

**JOCELYN  
KARBO**



**ELISHA  
BURY**

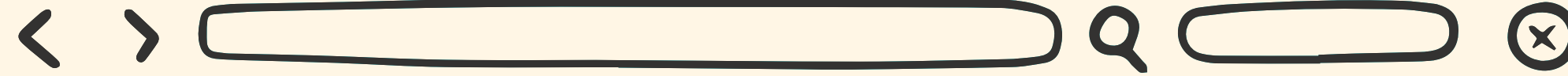
**MARY ANN  
KAMINSKI**



**KIM NASH**

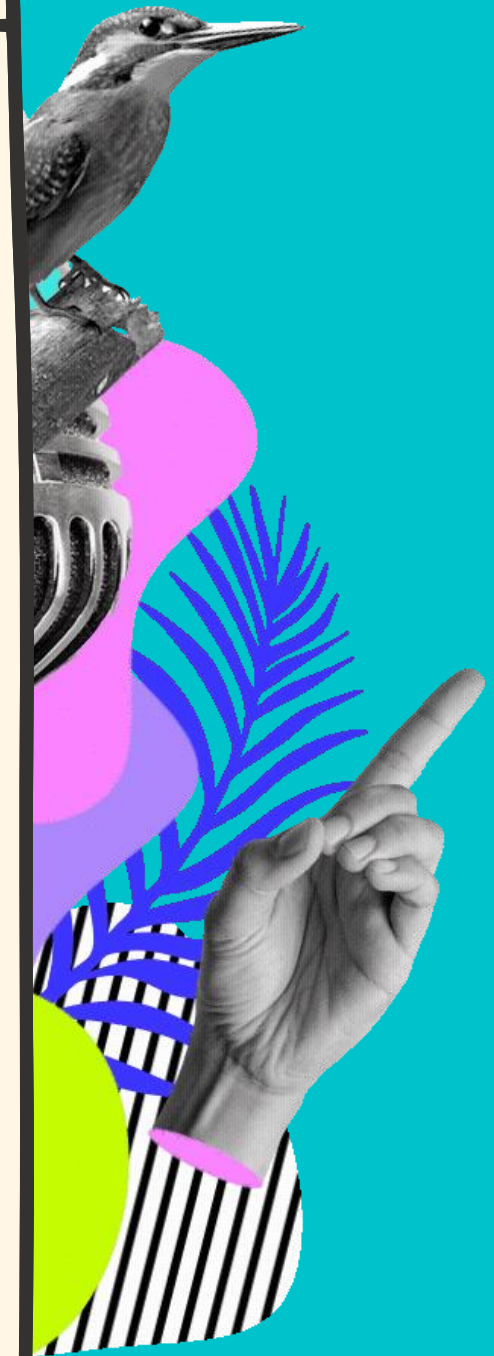
**LORAN  
PERRY**





# TABLE OF CONTENTS

- 1. TDA UPDATES & NEWS**
- 2. SPOTLIGHT**
- 3. DEADLINES & REMINDERS**
- 4. ESC REGION 11 UPDATES**





**01.**  
**TDA**  
**UPDATES**  
**& NEWS**



# FPR CHANGES

List menu item and identify ALL meal contributions for item

Total meals served separated by reimbursable meals vs adult/a la carte

Amount served separated by reimbursable meals vs adult/a la carte

1. Contracting Entity (C) \_\_\_\_\_  
 2. Site Name: \_\_\_\_\_  
 3. Meal Service:  Br \_\_\_\_\_  
 3a. Service type:  O \_\_\_\_\_

4. Number of Meals Served  
 4a. Reimbursable Student Me \_\_\_\_\_  
 4b. Non-Reimbursable Meals \_\_\_\_\_  
 4c. Total Meals: \_\_\_\_\_

Abbreviations used: Meat (M/MA), Grain (G), Vegetable (V), Fruit (F), Milk (M)

6. Food / Menu Item (including condiments)	Planning Section-Complete Before Meal Service											Documentation Section-Complete After Meal Service							
	7. Meal Component Contribution					8. Recipe # or Product Brand and Code	9. Age/Grade		10. Age/Grade		11. Adults and A la Carte		12. Total Projected Servings		13. Total Amount Prepared (Offered)	14. Actual # of Servings Selected (Served)	15. Actual # of Servings Selected (Served)	16. Leftovers	17. Comments (as applicable)
	M/MA (oz. eq.)	G (oz. eq.)	V	F	M		9a. # of Portions Planned	9b. Portion Size	10a. # of Portions Planned	10b. Portion Size	11a. # of Portions Planned	11b. Portion Size	12a. Total # of Planned Servings	12b. Planned Portion Size	Purchased Units (Cases, Lbs, Quarts, Gallons, # 10 Cans, or Pans)	Student	Adult/ A la Carte		

Signature or e-signature somewhere on FPR

- Are you using the correct version of the food production record?



## TDA RELEASES CIVIL RIGHTS TRAINING

- Certificate will be issued at the end of the module
- Access online training [here](#)

# FINANCIAL REPORT

- Opened January 5
- Deadline is March 27
- Use data from SY24-25 to complete the report
- Find resources [here](#)



# USDA FOODS

- TDA has loaded entitlement balances into WBSCM
- Be sure to log into WBSCM
- The PY27 WBSCM Catalogs are **OPEN** and close Friday, February 27



The Annual Transfer Exercise runs Jan. 1 – April 15.  
This helps redistribute excess inventory from processor and school district accounts. You can submit a request or transfer via the [Smart Sheet](#)



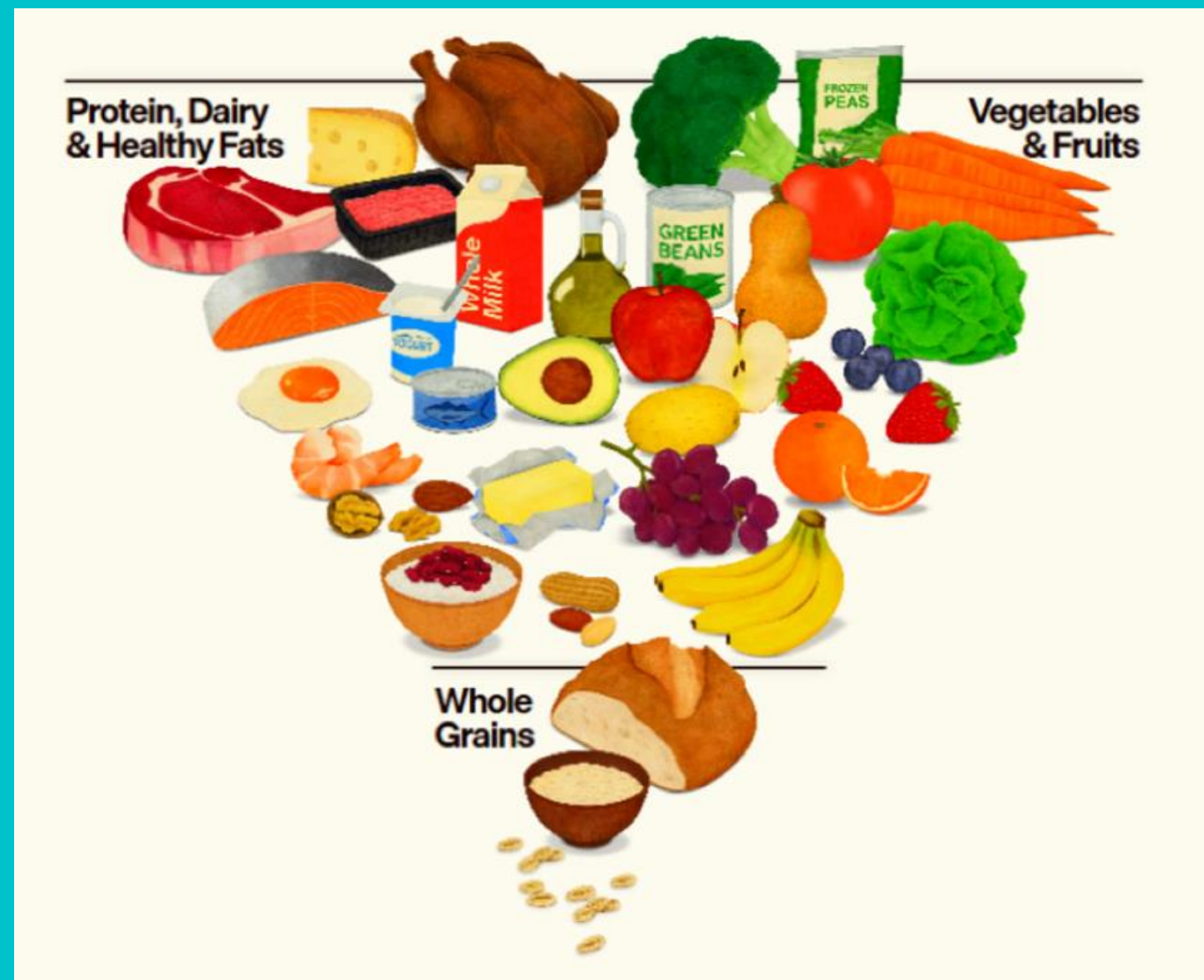
# MILK FLEXIBILITIES

Currently pertains to **ONLY** lunches served in NSLP



- Fat-free, 1%, 2%, and whole milk, flavored or unflavored, now allowable for NSLP
- Exclude saturated fat from fluid milk only in weekly average for saturated fat
- Written request for milk substitution based on disability/allergy can now be signed by parent
- No longer required to notify TDA if offering nutritionally equivalent non-dairy beverages (such as soy or other plant-based milk) to ALL students
- Read [USDA Policy Memo](#)

# UPDATED DIETARY GUIDELINES FOR AMERICANS



- Released January 7, 2026 with a streamlined, concise presentation
- Strong emphasis on “eat real food” – minimally processed foods first
- Prioritizes protein and whole foods (vegetables, fruits, whole grains, dairy)
- Calls for avoiding highly processed and refined foods
- Maintains some limits (such as added sugars, sodium), but the messaging style and priority areas have shifted
- New graphic (inverted or revised food pyramid) that places protein, dairy, healthy fats, and produce at the top with grains lower on the hierarchy – no MyPlate

# DGA KEY DIFFERENCES

## 2020-2025

### EAT MORE:

- Fruits and vegetables
- Whole grains
- Low fat dairy
- Lean meats
- Poultry/seafood
- Nuts
- Unsaturated fats

### EAT LESS:

- Red processed meats
- Sugar sweetened foods and beverages
- Grains

## 2025-2030

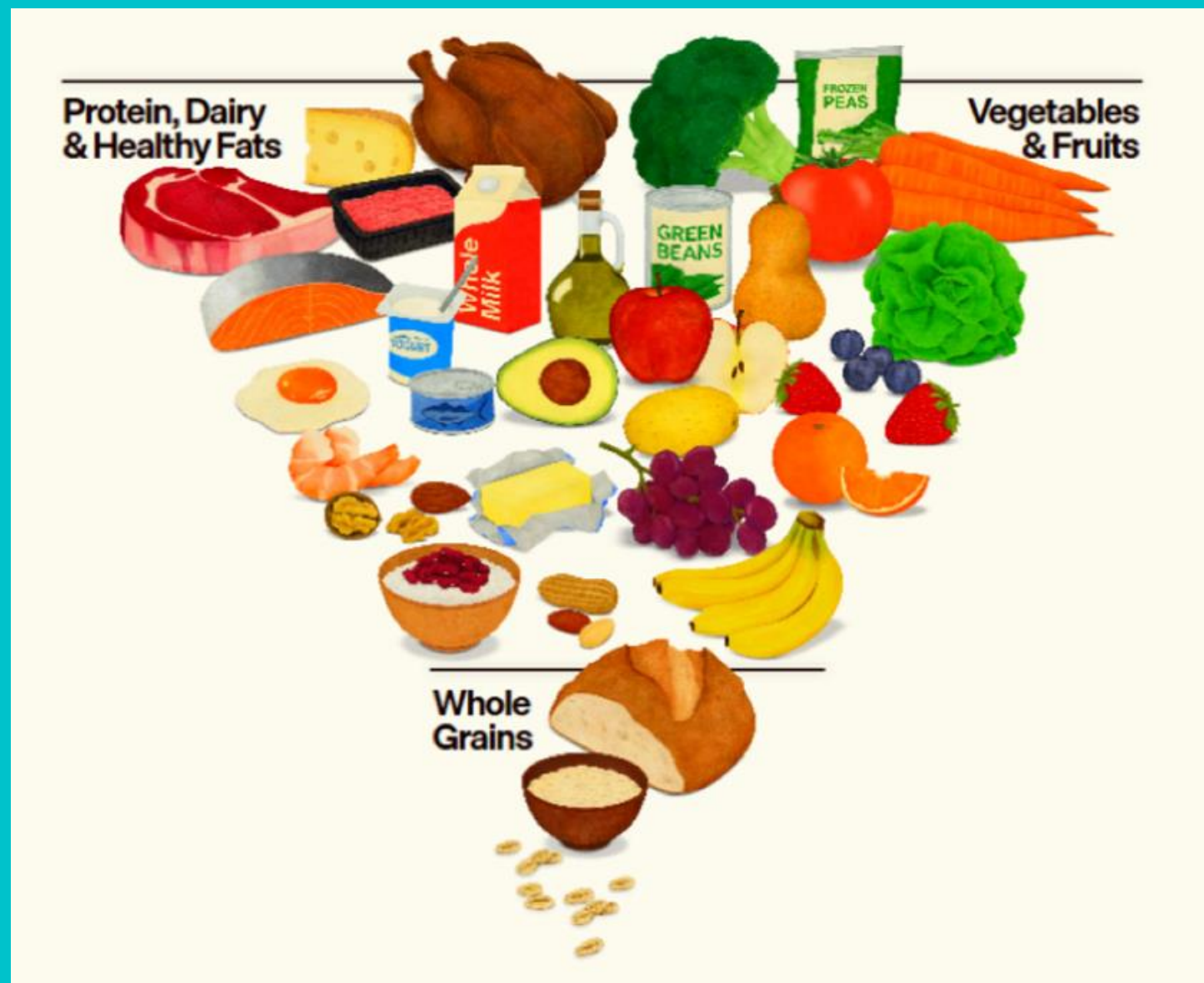
### EAT MORE:

- Animal source foods
- Full fat dairy
- Fruits and vegetables
- Beef tallow
- Whole grains

### EAT LESS:

- Added sugars
- Refined grains
- Chemical additives
- Fruit and vegetable juices
- Highly processed foods and beverages
- Sodium

# DGA POLICY & IMPLEMENTATION IMPACTS



## Why This Matters

- Both sets guide federal nutrition programs (such as, school meals, WIC, SNAP)
- Changes in emphasis (whole foods, processing, protein) could influence:
  - School meal planning
  - Nutrition education programs
  - Food procurement standards
  - Public health campaigns





# PROFESSIONAL DEVELOPMENT TRACKING

Begins July 1 – start of school  
year

- In addition to keeping certificates, agendas and sign-in sheets, you need to have an overview tracker



# WHAT TO INCLUDE IN TRACKER

- Track the total hours
- During a review year, include planned trainings
- Download [TDA's tracking tool](#)

**1.**

Name and job position

**2.**

Date of hire

**3.**

Working status: full time, part time, temporary, etc.

# Certificate of Completion

This certifies that:

Jocelyn Karbo

Successfully Completed  
Menu Planning

3 Hours  
Date: October 31, 2025

Loran Perry

ESC Specialist  
ESC Region 11




*Lindsay J. Rodgers*  
Administrator for Food & Nutrition  
Texas Department of Agriculture

## REQUIRED DOCUMENTATION

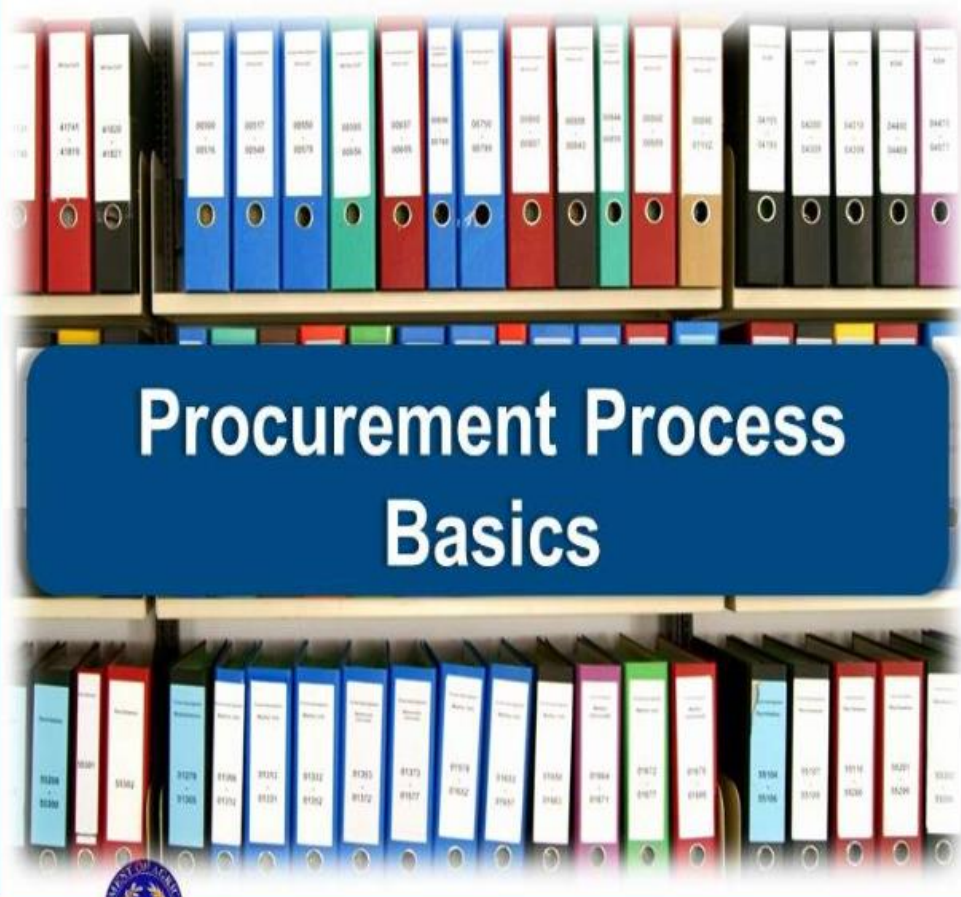
- Training event title and content, including topics/objectives
- Date and actual time participating in learning activities
- Source providing the training
- Include (when applicable):
  - Attendance sign-in sheets
  - Agendas
  - Certificates of attendance
  - Any other training documents

# REQUIRED TRAINING: PROCUREMENT




**CHILD NUTRITION**  
NATIONAL SCHOOL LUNCH PROGRAM


**TDA**  
*Food & Nutrition Services*




**Procurement Process  
Basics**



TEXAS DEPARTMENT OF AGRICULTURE  
**COMMISSIONER SID MILLER**  
Fraud Hotline: 1-866-5-FRAUD-4 or 1-866-537-2834 | P.O. Box 12847 | Austin, TX 78711  
Toll Free: (877) TEX-MEAL | For the hearing impaired: (800) 735-2989 (TTY)



Updated 7/30/2024  
www.SquareMeals.org



Food and Nutrition Division  
National School Lunch Program

This product was funded by USDA.  
This institution is an equal opportunity provider.

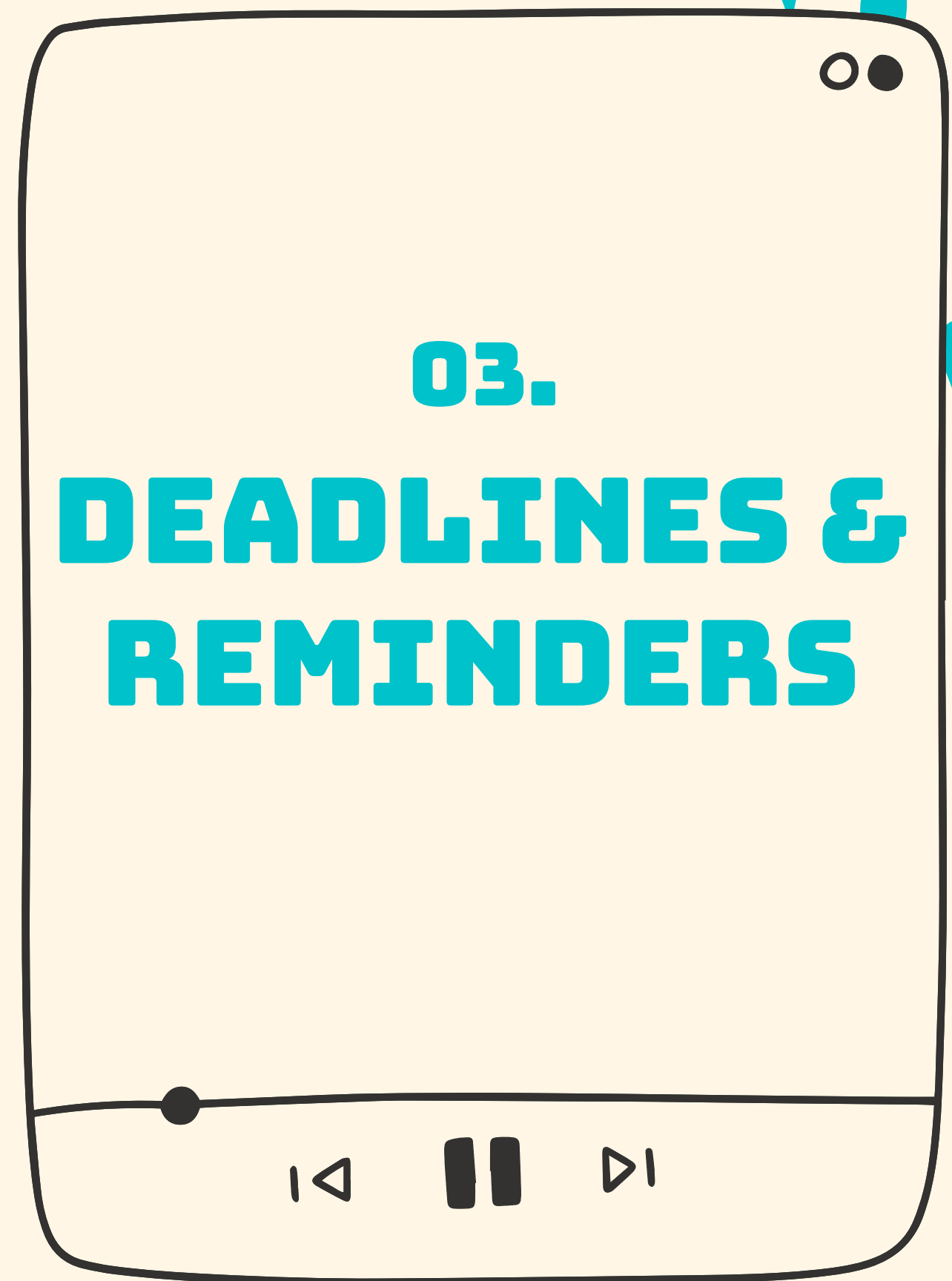
Beginning in SY24-25, annual procurement training is required for any staff member involved in NSLP procurement activities

- Specific number of hours or topics are flexible
- Try TDA's web-based training [here](#)

# TRAINING BASICS

Staff Role	Hours Required
Program Director	12 hours <i>8 hours of food safety training every 5 years</i>
Program Manager	10 hours
Program Staff (20+ hours)	6 hours
Program Staff (<20 hours)	4 hours
Hired after January 1	½ the required hours

- Choose the hours that most closely align with your role – lean toward highest number of hours
- All FSMC employees must meet these standards
- Annual Civil Rights training counts
- If you conduct the training, you may count it as your training as well
- Temporary or substitute employees do not need to meet professional standards for training
- Only count hours directly related to SNP duties



# DON'T FORGET!

## JANUARY

USDA Foods Catalogs open

## FEBRUARY

2 Onsite Monitoring Forms for NSLP and SBP deadline

2 FSMC renewal due to ESC

17 TDA deadline for FSMC renewal

27 WBSCM catalogs close

## MARCH

1 CEP report opens

15 Universal breakfast waiver

20 CEP report deadline

27 Financial report deadline



# **MULTI-REGION PURCHASING CO-OP MEMBERS**

## **USDA Commodity Processing - It's that Time of the Year !**

Districts who plan to spend entitlement on Processed USDA Foods or considering processing:

- MRPC will hold four (4) live Zoom trainings
  - Mark your calendar for one of the following sessions. A link to join will be emailed one day before each session.
    - January 20th - Tuesday: 1:00 - 2:00 pm
    - January 21st - Wednesday: 9:00 - 10:00 am
    - January 22nd - Thursday: 1:00 - 2:00 pm
    - January 23rd - Friday: 9:00 - 10:00 am

**MRPC plans to open Pre-Order around January 20th and you will have until February 24th to finalize your product selections.**

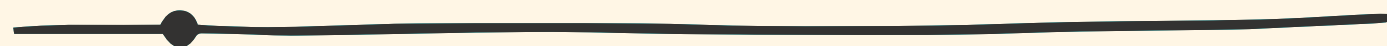


**04.**  
**ESC**  
**REGION 11**  
**UPDATES**





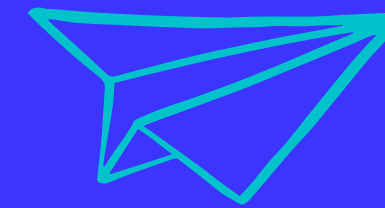
## WBSCM ORDERING LABS



Register for classes [here](#).

### DATE

JANUARY 23 and 30  
FEBRUARY 6 and 13



### TIME

IN PERSON: 10:00 AM – 12:00 PM  
VIRTUAL: 1:00 – 3:00 PM



### DESCRIPTION

Need help with USDA Foods ordering? Join us for one or all of the lab sessions.

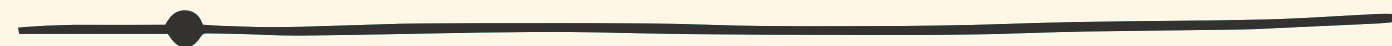
### AUDIENCE

District CN Directors, Menu Planners





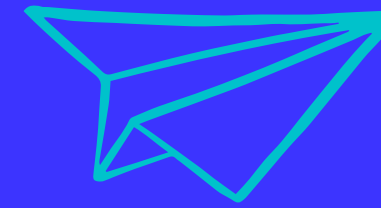
# INTRODUCTION TO SCHOOL NUTRITION LEADERSHIP: SESSION 4



Register for classes [here](#).

## DATE

FEBRUARY 12



## TIME

8:30 AM – 3:30 PM



## DESCRIPTION

Join us for a 7-part series for the aspiring or new CN director. This fourth class will cover food production & operational management plus procurement & inventory management.

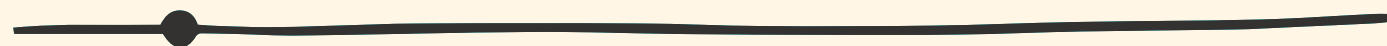
## AUDIENCE

District CN Directors, Aspiring  
CN Directors





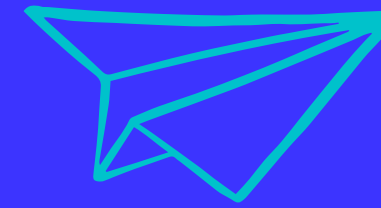
# NSLP FINANCIAL CODING & FINANCIAL REPORTING REQUIREMENTS WITH LAB



Register for classes [here](#).

## DATE

FEBRUARY 18



## TIME

8:30 AM – noon  
VIRTUAL



## DESCRIPTION

Become familiar with financial account code structure that can assist with the financial reporting requirements. We will also review the financial report.

## AUDIENCE

CN Directors, Business Office  
Personnel





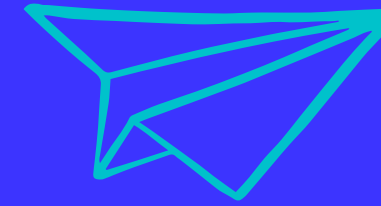
# EXCESS NET CASH RESOURCES & THE SPEND DOWN PLAN



Register for classes [here](#).

## DATE

FEBRUARY 26



## TIME

8:30–11:30 AM  
VIRTUAL



## DESCRIPTION

Learn how to maintain net cash resources for NSLP and how to take steps to resolve an excess.

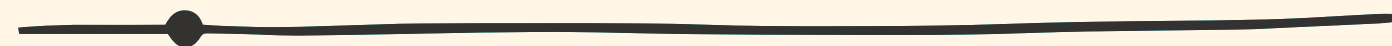
## AUDIENCE

CN Directors, Business Office  
Personnel





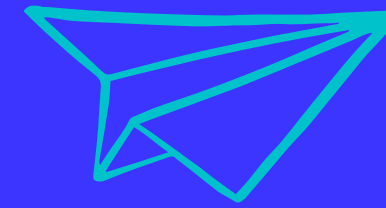
# PROCUREMENT OF FOOD SERVICE VENDOR CONTRACTS



Register for classes [here](#).

## DATE

FEBRUARY 27



## TIME

8:30–11:30 AM



## DESCRIPTION

Discover action plans for procuring and managing contracts with consultants, vended meal companies, and FSMCs.

## AUDIENCE

CN Directors, Business Office  
Personnel





# DENTON ISD

- Check out the Turkey Day feast!

# MANSFIELD ISD, EAGLE MOUNTAIN- SAGINAW ISD + OTHERS

- Recipe ideation event with Butterball Food Service and Joe Urban from School Food Rocks
- With neighboring districts, the nutrition teams created innovative dishes focused on global flavors and fresh ingredients



# QUESTIONS?



A copy of these slides will be available at  
[esc1.net/childnutrition](http://esc1.net/childnutrition)



**TEXAS DEPARTMENT OF AGRICULTURE**  
**COMMISSIONER SID MILLER**

In accordance with federal civil rights law and U.S. Department of Agriculture (USDA) civil rights regulations and policies, this institution is prohibited from discriminating on the basis of race, color, national origin, sex (including gender identity and sexual orientation), disability, age, or reprisal or retaliation for prior civil rights activity.

Program information may be made available in languages other than English. Persons with disabilities who require alternative means of communication to obtain program information (e.g., Braille, large print, audiotape, American Sign Language), should contact the responsible state or local agency that administers the program or USDA's TARGET Center at (202) 720-2600 (voice and TTY) or contact USDA through the Federal Relay Service at (800) 877-8339.

To file a program discrimination complaint, a Complainant should complete a Form AD-3027, USDA Program Discrimination Complaint Form which can be obtained online at: <https://www.usda.gov/sites/default/files/documents/ad-3027.pdf>, from any USDA office, by calling (866) 632-9992, or by writing a letter addressed to USDA. The letter must contain the complainant's name, address, telephone number, and a written description of the alleged discriminatory action in sufficient detail to inform the Assistant Secretary for Civil Rights (ASCR) about the nature and date of an alleged civil rights violation. The completed AD-3027 form or letter must be submitted to USDA by:

**1.mail:**

U.S. Department of Agriculture  
Office of the Assistant Secretary for Civil Rights  
1400 Independence Avenue, SW  
Washington, D.C. 20250-9410; or

**2.fax:**

(833) 256-1665 or (202) 690-7442; or

**3.email:**

[Program.Intake@usda.gov](mailto:Program.Intake@usda.gov)

This institution is an equal opportunity provider.