

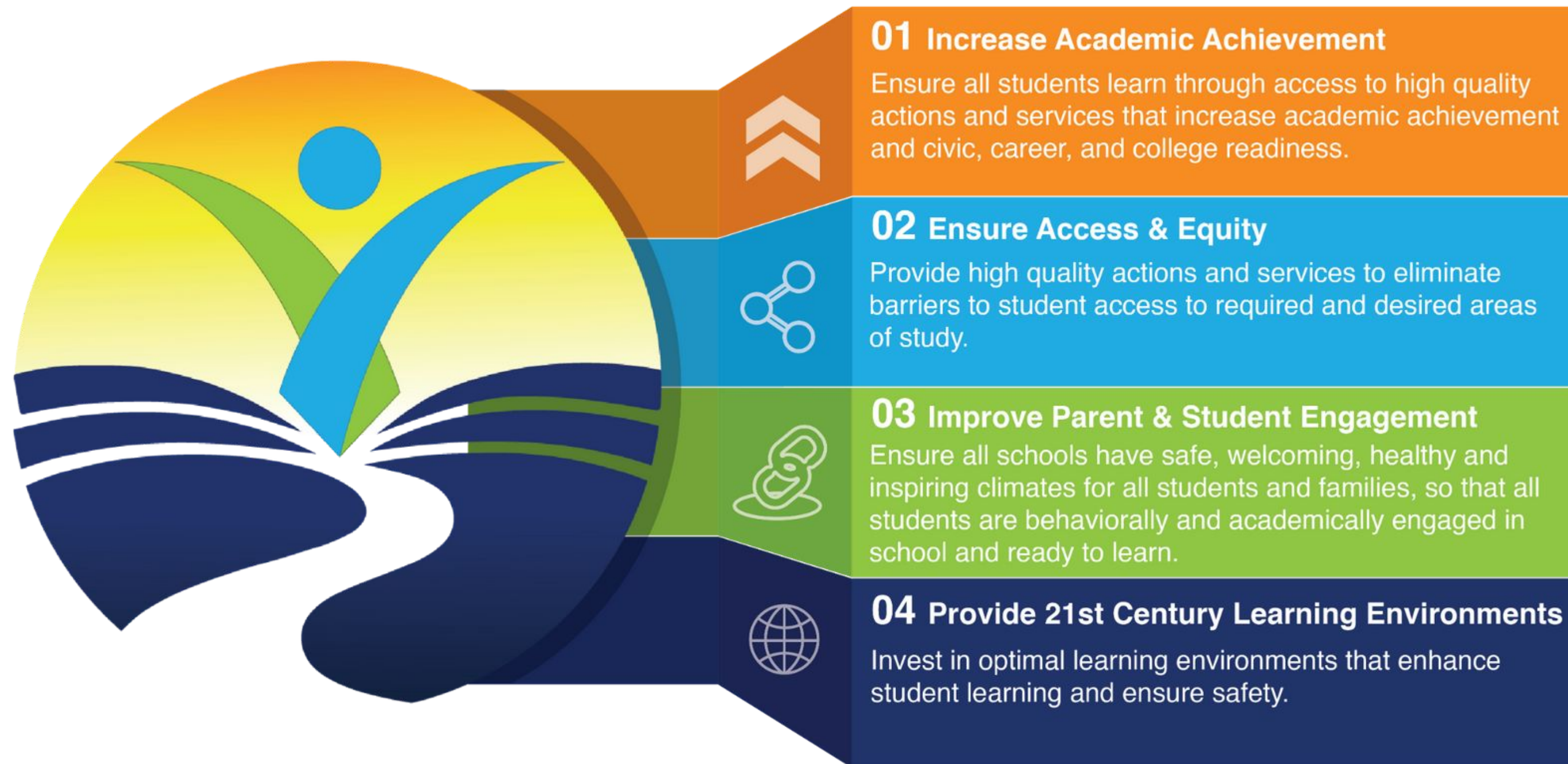


# LAWNDALE EARLY EDUCATION PROGRAMS - CARSON

LESD BOARD MEETING  
JANUARY 2026



# DISTRICT GOALS



# LES D STATE PRESCHOOL

---

**FREE PRESCHOOL  
CLASSES TO  
CHILDREN AGES 2-5**



## IN OUR PROGRAM

We aim to foster and support the social-emotional, cognitive, physical development of young children while building on their strengths by respecting and celebrating each child's individuality.

## QSLA RATING

Earning a **Level 5** means every preschool site meets exceptional standards in critical areas such as enriching learning environments, positive and impactful teacher-child interactions, and meaningful family engagement.





# Current Enrollment 2025-2026



<u>School</u>	<u>AM</u>	<u>PM</u>	<u>Full Day</u>	<u>Dual Language</u>	<u>SPED (IEP/SPEECH)</u>
Anderson P1	14	12		10	1
Carson P1	14	9		6	2
Carson P2			16	3	2
Carson P3	11	2		6	
Green P1	13	8		3	1
Mitchell P1			16	2	1
Mitchell P3	14			1	
Twain B6	7	6		2	1
<b>Totals</b>	<b>73</b>	<b>37</b>	<b>32</b>	<b>33</b>	<b>8</b>

**Total of 142 students enrolled**

**7 students in the referral process**

**8 students with Exceptional needs**



# WHAT'S NEW

---

This school year we are honored to have successfully opened a two-year-old classroom!

- **Open to children 28 months and older**
- **Available at Carson**
- **AM and PM sessions**

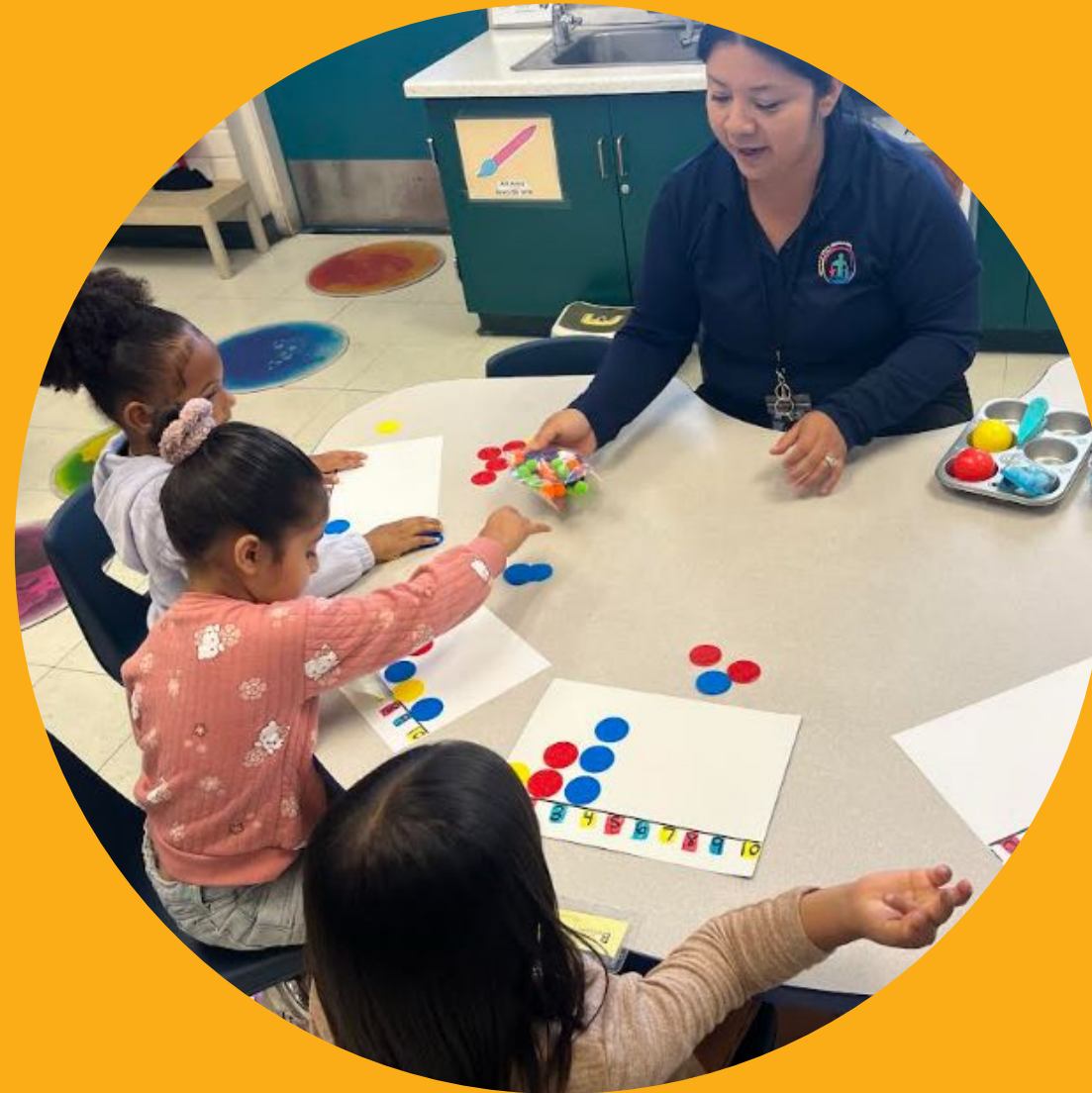




# District goal 1 : Increase academic achievement

## CURRICULUM & LEARNING ENVIRONMENT

- Developmentally appropriate practice
- Highscope
- Defined workspaces & centers
- Daily routine



## LITERACY KITS

---

- Enables continued learning at home for added academic support and enrichment
- Equips parents with appropriate tools and strategies for the effective use of materials.



# District goal 2: Ensure access and Equity

## PROGRESS MONITORING

### Ages and Stages Questionnaires

- Screening young children is an effective, efficient way to check a child's development.
- It's also an essential first step toward identifying children and provide intervention for children that may have possible delays or disorders.

### DRDP 2025

- State Preschool opted to be an early adopter of DRDP 2025.
- The California Department of Education (CDE) has updated the Preschool Learning Foundations (PLF), to Preschool/Transitional/Kindergarten Learning Foundations (PTKLF) to align with UPK.

### CLASS

- The Classroom Assessment Scoring System®, is an observation tool that measures the quality of educator-child interactions
- Higher CLASS scores:
  1. Greater student behavioral engagement.
  2. Stronger vocabulary and reading outcomes
  3. Increased math achievement



# District goal 3: Ensure access and Equity



## SUPPORTING OUR FAMILIES

### PARENT SUPPORT

- Parent monthly meetings
- Positive solutions
- Parent engagements
- Parent zoom workshops



### COMMUNITY LIAISON

Assist families with communication, Parent Square, and community resources



### PARENT ADVISORY COMMITTEE

Collaborations between preschool and parents on a variety of school issues, activities, and services.



# Positive Solutions for Families

"I really enjoyed this workshop. It is a great way to bring parents together and feel connected not just with the education of our children but with some behavior concerns that some of us parents may have and knowing we are not alone in our daily experiences with our children. As I mentioned, I am a first-time mom and being able to relate to the stories shared by a parent or the admin staff was comforting. Thank you for everything."

-Margie Cruz

"Para mi me gusto mucho porque fortalece mis habilidades como madre y le ayudó a mi hijo con sus emociones."

-Mariela Franco



Free  
parenting  
workshop

7-part series  
with a new  
topic each  
week

Made for  
parents of  
preschool and  
TK age  
children



# District goal 4: Provide 21st Century Learning Environments

- DESIGNATED REST TIME - *FULL-DAY PROGRAMS*
- CARSON OUTDOOR EQUIPMENT
- DEFINED WORK AREAS



# Community Partners

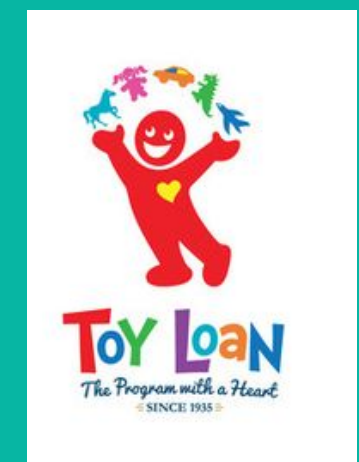
---

- **Lawndale Library** - *Literacy Night*
- **ESMoA** - *Family engagements*
- **DPSS** - *Toy Loan*
- **El Camino College**
  - *Lead Teachers serve as Mentor Teachers for El Camino students to complete Practicum hours*
  - *Creates a bridge between El Camino students and LESD Employment opportunities*



El Camino College 

**ESMoA**



# EARLY START

---

**REPRESENTING OUR SW  
SELPA'S YOUNGEST  
LEARNERS 18 MONTHS  
TO 3 YEARS OLD.**



## IN OUR PROGRAM

We are committed to empowering families through ongoing service and tailored Individualized Family Service Plans through specialized classroom learning, and personalized home or center-based support.

## CURRICULUM AND PROGRESS MONITORING

Our focus is on data-driven growth and continuous team review to achieve optimal student outcomes. We use Frog Street curriculum, and ensure developmental success through DRDP assessments and collaborative IFSP progress monitoring.

# LEAP

---

**FOR PRESCHOOL-AGED  
STUDENTS WITH IEPs  
AGES 3-5 YEARS.**



## IN OUR PROGRAM

The Lawndale Early Advantage Preschool (LEAP) provides a structured and supportive environment for preschool-age students with IEPs. We are dedicated to delivering specialized academic instruction that fosters growth and empowers every learner to thrive.

## ENROLLMENT

We ensure a seamless transition for students through direct referrals from the Westside Regional Center, parent requests, and collaborative observations. Our ongoing enrollment is based on each child's eligibility and specific program needs as they reach their third birthday.



# LEAP: Empowering All Learners Through Program Excellence



## PROGRAM DESIGN & ENVIRONMENT

---

- Language-rich, supportive settings
- Developmentally tailored sensory tools
- Flexible seating for diverse needs



## INTEGRATED CURRICULUM & DEVELOPMENT

- Project-based Creative Curriculum
- Social, cognitive, and physical growth focus
- Daily routines that build independence



## ACADEMIC ACCOUNTABILITY

---

- Seamless entry and referral pathways
- Continuous data-driven progress monitoring
- Rigorous tracking of individual IEP goals



# LEAP: Supporting All Learners through Collaborative Engagement & Training

- **Community Connection:** Monthly gatherings like Loteria, Winter Concerts, Storytime with Teachers, and parent workshops to foster school-to-home bonds.
- **Engagement Tools:** At-home learning and family support via the Ready Rosie digital platform.
- **Personalized Success:** Individualized Education Program (IEP) and transition meetings to guide student paths toward TK/K.
- **Data-Informed Growth:** Collaborative reviews of developmental milestones using the Desired Results Developmental Profile (DRDP).
- **Advanced Staff Training:** Specialized professional development in ABA Visualized, Crisis Prevention Intervention (CPI), and Creative Curriculum. Additionally, Classified Staff are provided with in-house facilitated play, hygiene, and toileting training.
- **Strategic Support:** Skill-building in sensory strategies to effectively meet the needs of all diverse learners.



Family  
Engagement  
& Supports

IEP, Transition  
& DRDP Parent  
Meetings

Staff Trainings



# LEAP, EARLY START & STATE PRESCHOOL

## Strengthening Success Through Collaboration

- **Integrated Support Systems:** Implementation of Multi-Tiered Systems of Support (MTSS) where LEAP and State Preschool staff work together to identify supportive structures for all student needs.
- **Shared Resources & Access:** Strategic collaboration providing dedicated "set aside" seats and specialized resource supports to ensure equitable access for students.
- **Joint Family Programming:** Co-facilitated workshops and engagement events designed to benefit all programs and families across the district.
- **Inclusive Events & Activations:** Collaborative celebrations and student activations, including Latino Heritage Night, the Carson Career Fair, and Carson Black History Month.



**THANK YOU!**

---