

DEMOGRAPHIC STUDY
FOR THE
LIVINGSTON
PUBLIC SCHOOLS



January 20, 2026

STATISTICAL FORECASTING

- Provide demographic services for school districts in the New York-New Jersey metropolitan area since 1998.
- Performed demographic studies for approximately 200 school districts in NY & NJ.
- Demographic consultant for the NYC Public Schools since 2006.

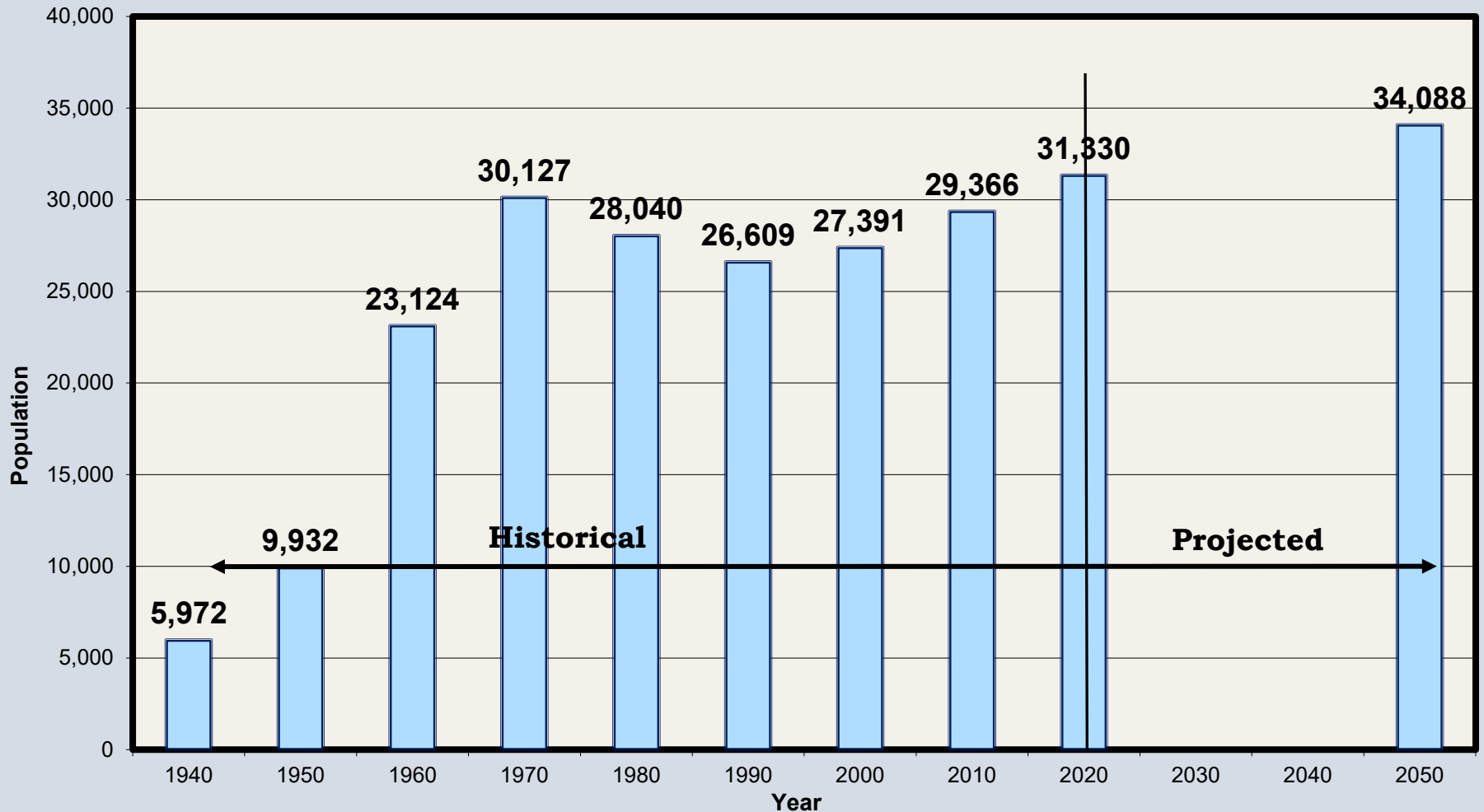
RICHARD S. GRIP ED.D.

- Executive Director
- Doctorate from Rutgers University Graduate School of Education in Educational Statistics and Measurement
- Numerous publications on school demography and presentations nationally
- Testified as an expert witness in school demography in several Administrative Law court hearings.

PURPOSE OF THE STUDY

- Project grade-by-grade enrollments from 2026-27 through 2030-31, a 5-year period
- Analyze community population trends, demographic characteristics and age structure, birth counts, and fertility rates
- Examine district's historical enrollments by grade configuration (PK-5, 6-8, and 9-12) and by school
- Examine historical enrollments of Livingston resident students attending non-public schools
- Determine historical birth counts for each elementary attendance area
- Research new housing starts and analyze their impact on the school district
- Compare school building capacities to current and projected enrollments
- Geocode students from 2019-20 and 2025-26 to show relative concentrations of where students live

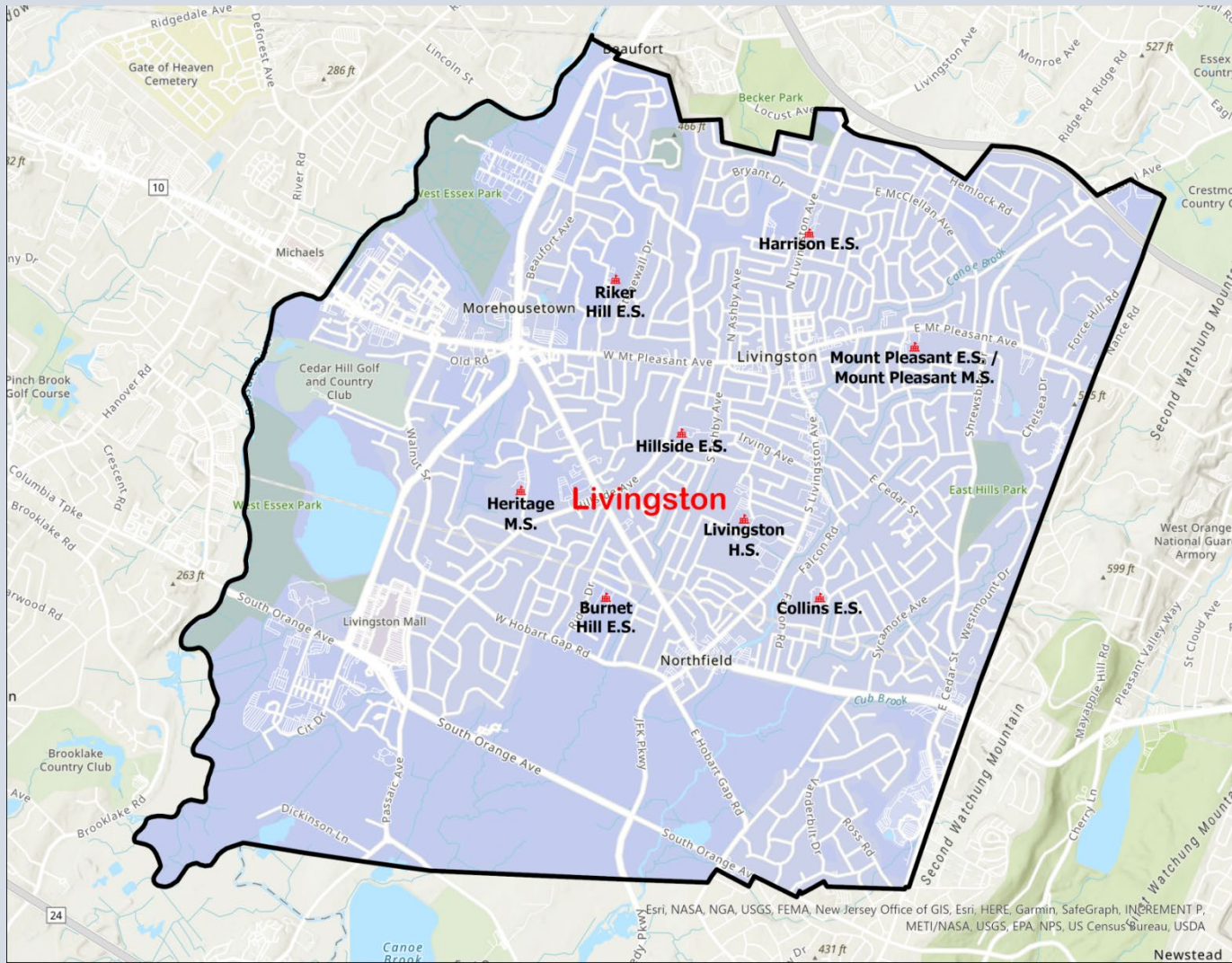
LIVINGSTON HISTORICAL AND PROJECTED POPULATIONS 1940-2050



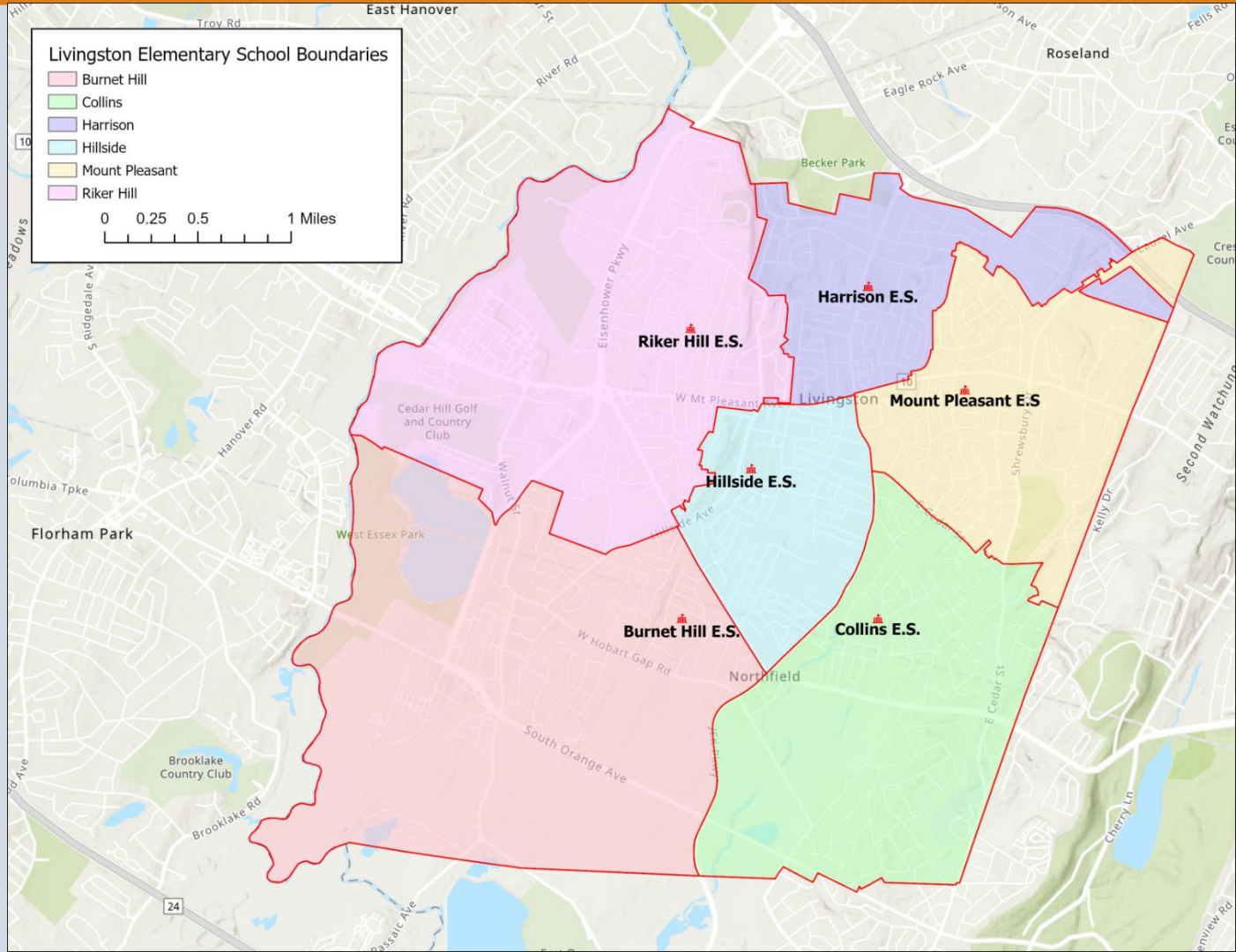
LIVINGSTON DEMOGRAPHIC PROFILE

- 60.0% White, 28.8% Asian, and 5.1% Hispanic in 2020 (increasing Asian population and declining White population from 2010)
- Median age = 43.6 years (NJ = 39.9 years)
- 30.1% of population is foreign-born (NJ=25.0%). The Dominican Republic and China are largest sources.
- Bachelor's Degree or Higher = 73.0% (NJ = 44.5%)
- Median household income = \$218K (NJ = \$104K)
- 10,719 housing units, of which 90% are 1-unit homes (attached or detached)
- 12.3% of housing units are renter-occupied (NJ = 38.7%).
- Median value of owner-occupied unit = \$746K (NJ = \$496K).

SCHOOL LOCATIONS



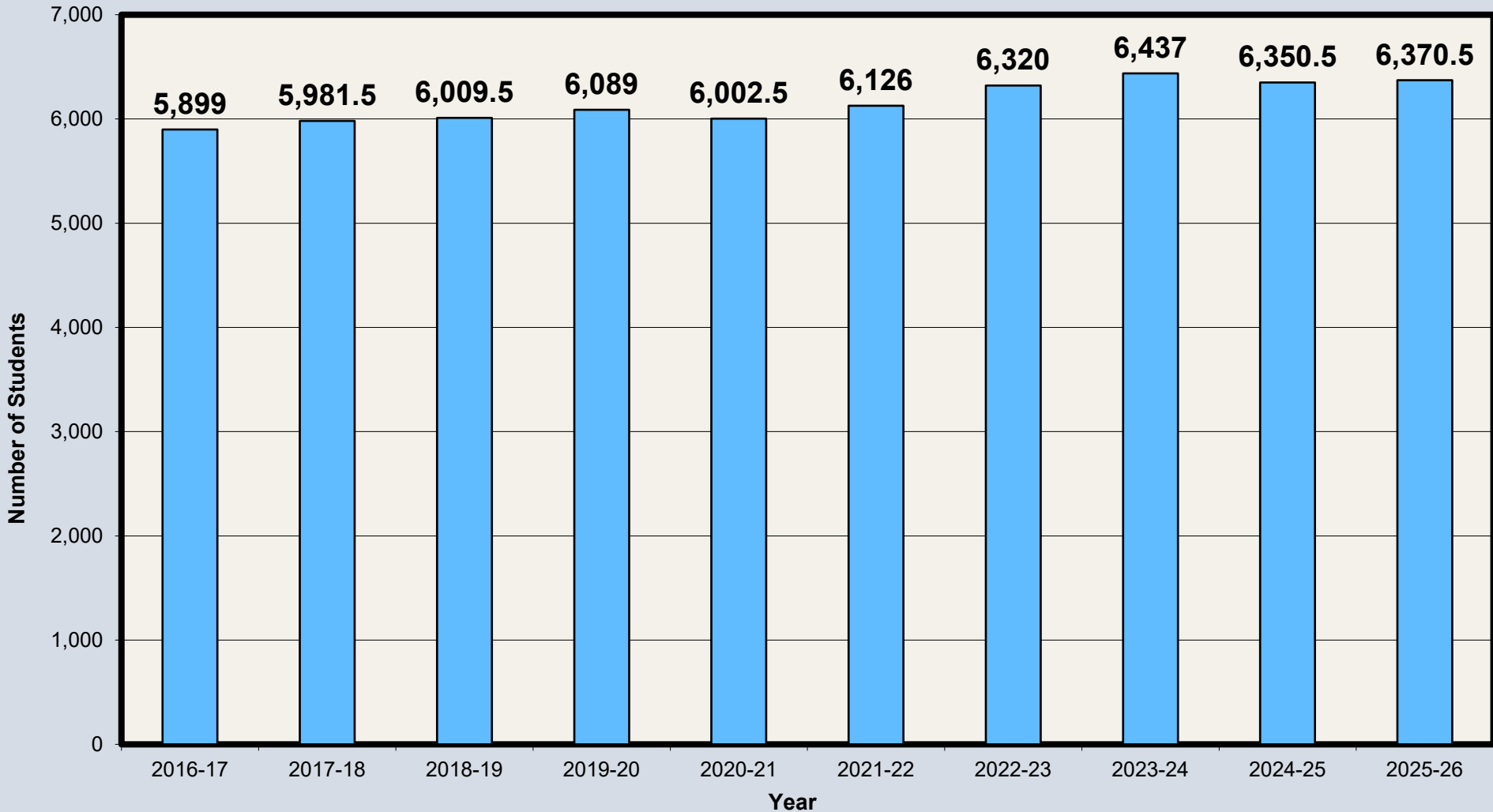
ELEMENTARY ATTENDANCE AREAS



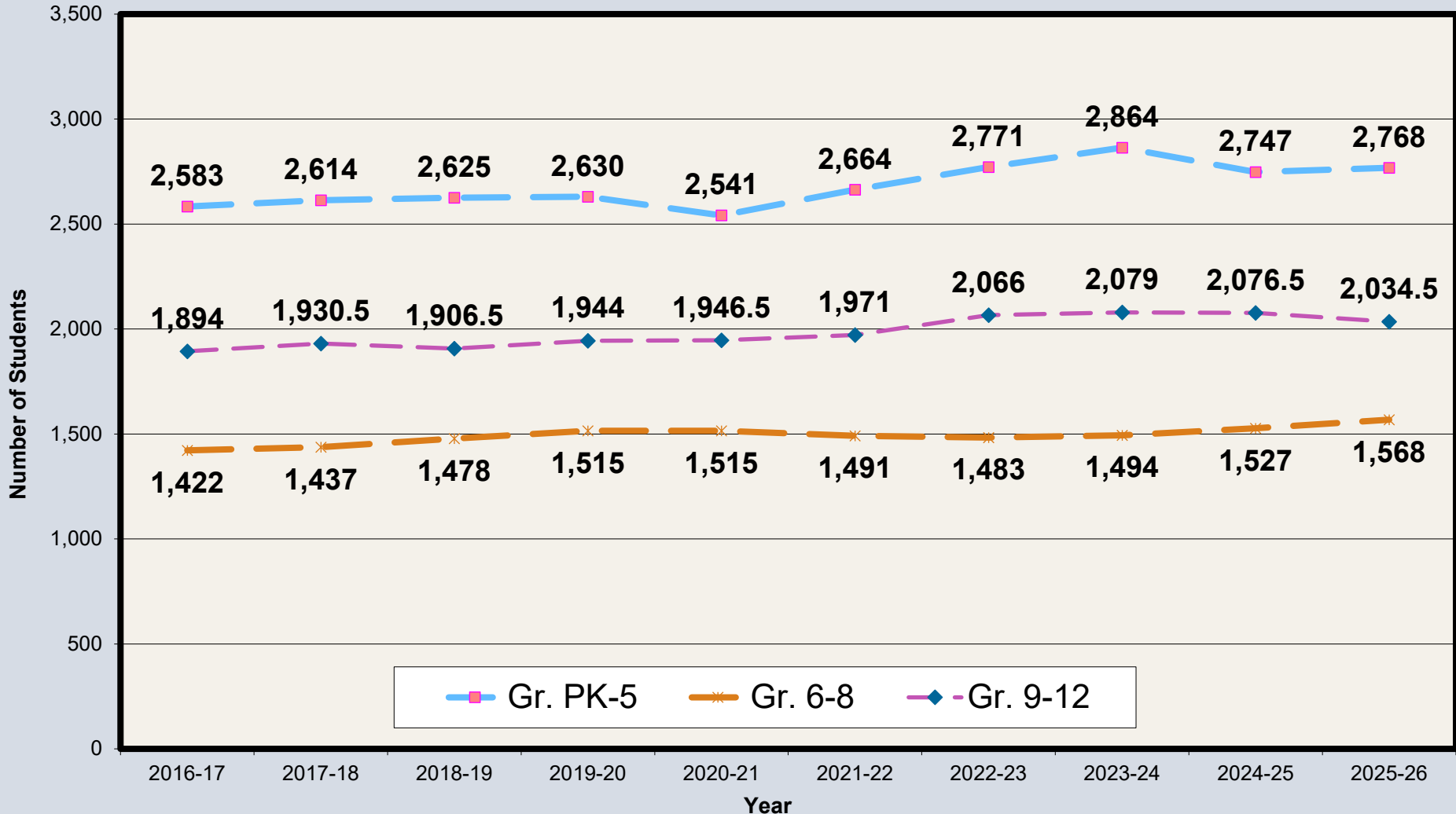
HISTORICAL ENROLLMENT TRENDS

- District's 2025-26 enrollment (PK-12) on 10/15/25 was 6,370.5.
- 2016-17 enrollment = 5,899 (gain of 471.5 students in 10 years)
- Enrollments steadily increased through 2023-24 before declining slightly.
- Cohort-Survival Ratio Method (CSR) was used to project enrollments five years into the future.

HISTORICAL ENROLLMENTS (PK-12) 2016-17 TO 2025-26



HISTORICAL ENROLLMENTS BY GRADE CONFIGURATION 2016-17 TO 2025-26

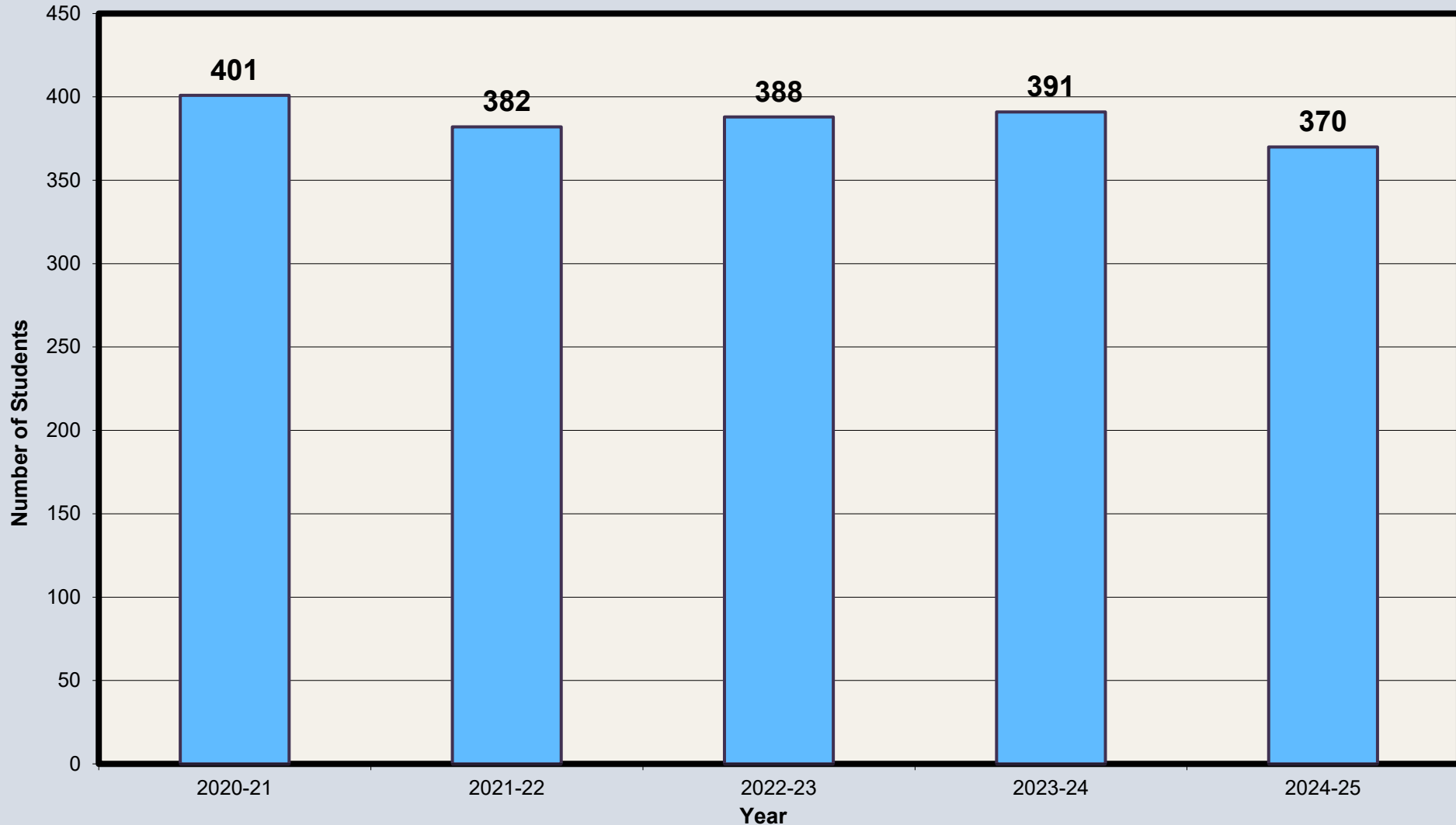


ENROLLMENT PROJECTION METHOD

COHORT SURVIVAL RATIO

- Ratios are calculated for each grade progression. Ex. 100 1st graders in 2024-25 become 95 2nd graders in 2025-26 = 0.95)
- Ratios above 1.000 = inward migration, below 1.000 = outward migration
- Survival ratios were computed for ten historical years. 11 of 13 average ratios were above 1.000 indicating net inward migration.
- Five survival ratios in 2020-21 (1st year of COVID-19 pandemic) were the lowest value in the last decade.
- Average ratios were applied to current enrollments to project future enrollments.

NON-PUBLIC SCHOOLS HISTORICAL ENROLLMENTS (K-12) 2020-21 TO 2024-25



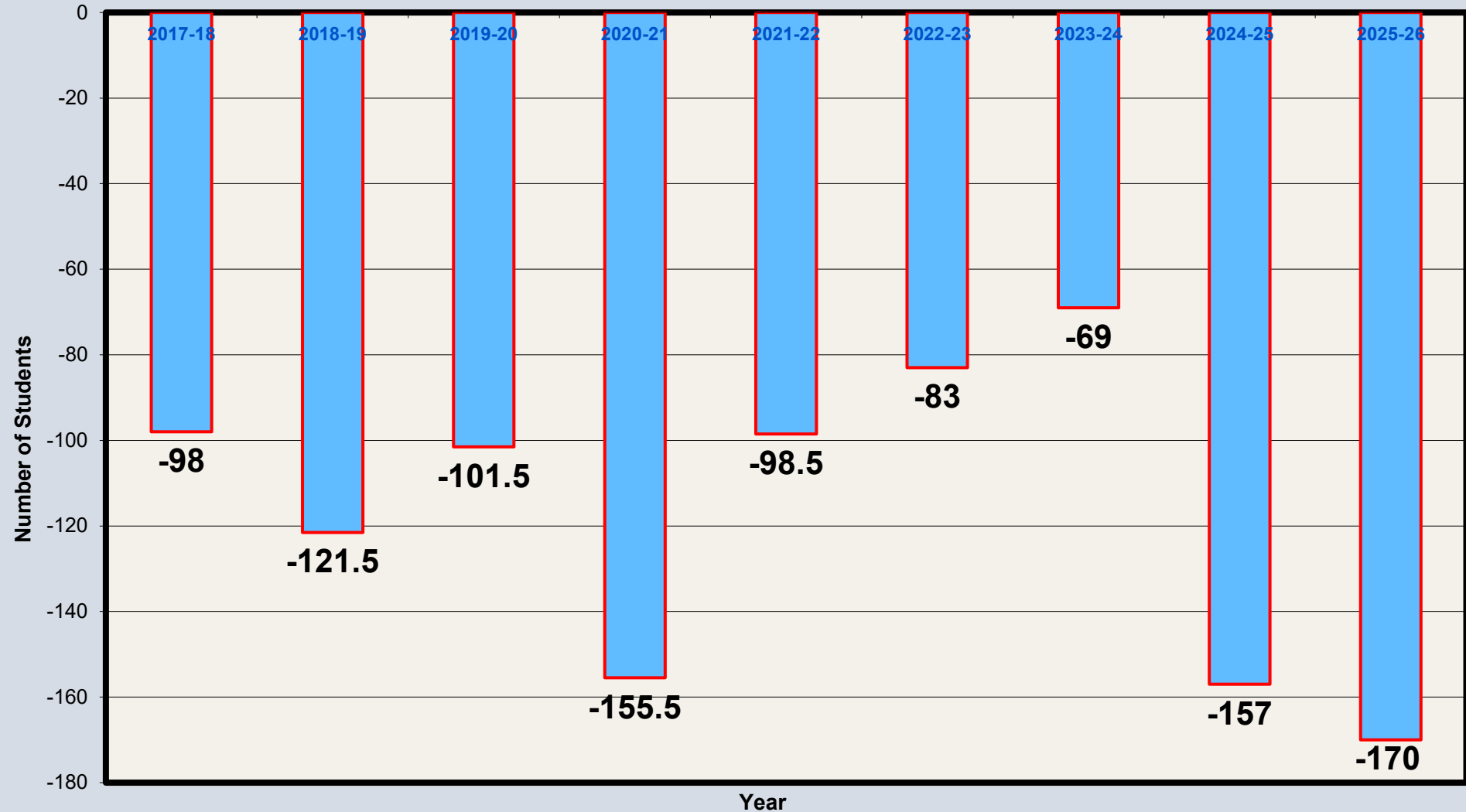
NON-PUBLIC SCHOOLS HISTORICAL ENROLLMENTS (K-12) 2020-21 TO 2024-25

School Type	2020-21	2021-22	2022-23	2023-24	2024-25
Public	5,968.5	6,088	6,290	6,404	6,320.5
Non-Public	401	382	388	391	370
Total	6,369.5	6,470	6,678	6,795	6,690.5
Public %	93.7%	94.1%	94.2%	94.3%	94.5%
Non-Public %	6.3%	5.9%	5.8%	5.7%	5.5%

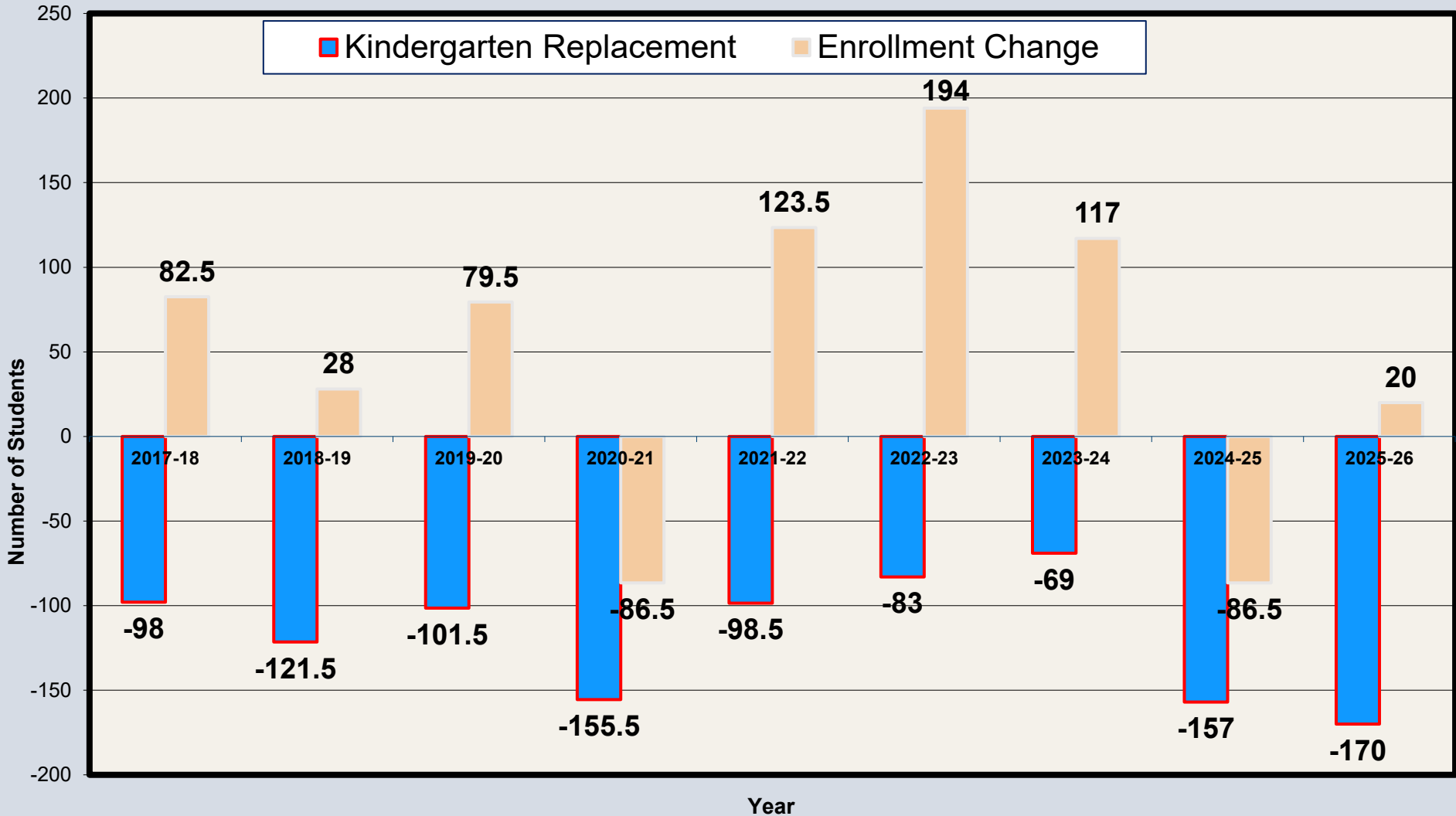
KINDERGARTEN REPLACEMENT

- Negative kindergarten replacement (KR) has occurred in each of last 9 years, ranging from 69-170 students per year.
- Negative KR- Number of entering kindergarten students is less than number of graduating 12th grade students from prior year.

HISTORICAL KINDERGARTEN REPLACEMENT



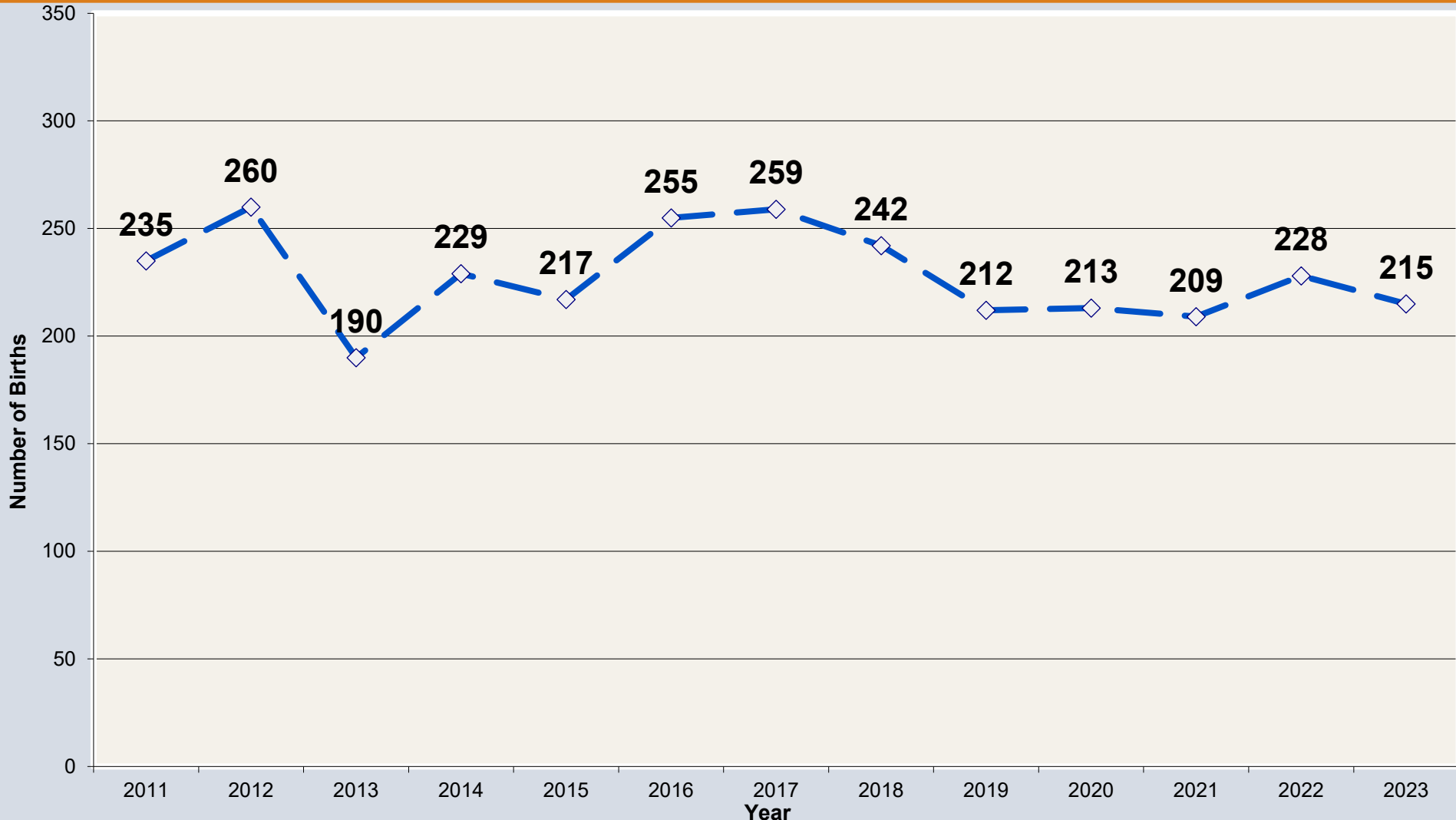
TOTAL ENROLLMENT CHANGE VS. KINDERGARTEN REPLACEMENT



BIRTH COUNTS

- Births are used to project kindergarten students 5 years later.
- Analyzed birth data from 2011-2023.
- Birth counts ranged from 190-260 with no apparent clearly defined trend.
- 215 births in 2023, which is lower (-20) than in 2011 (235).

LIVINGSTON HISTORICAL BIRTH COUNTS 2011-2023



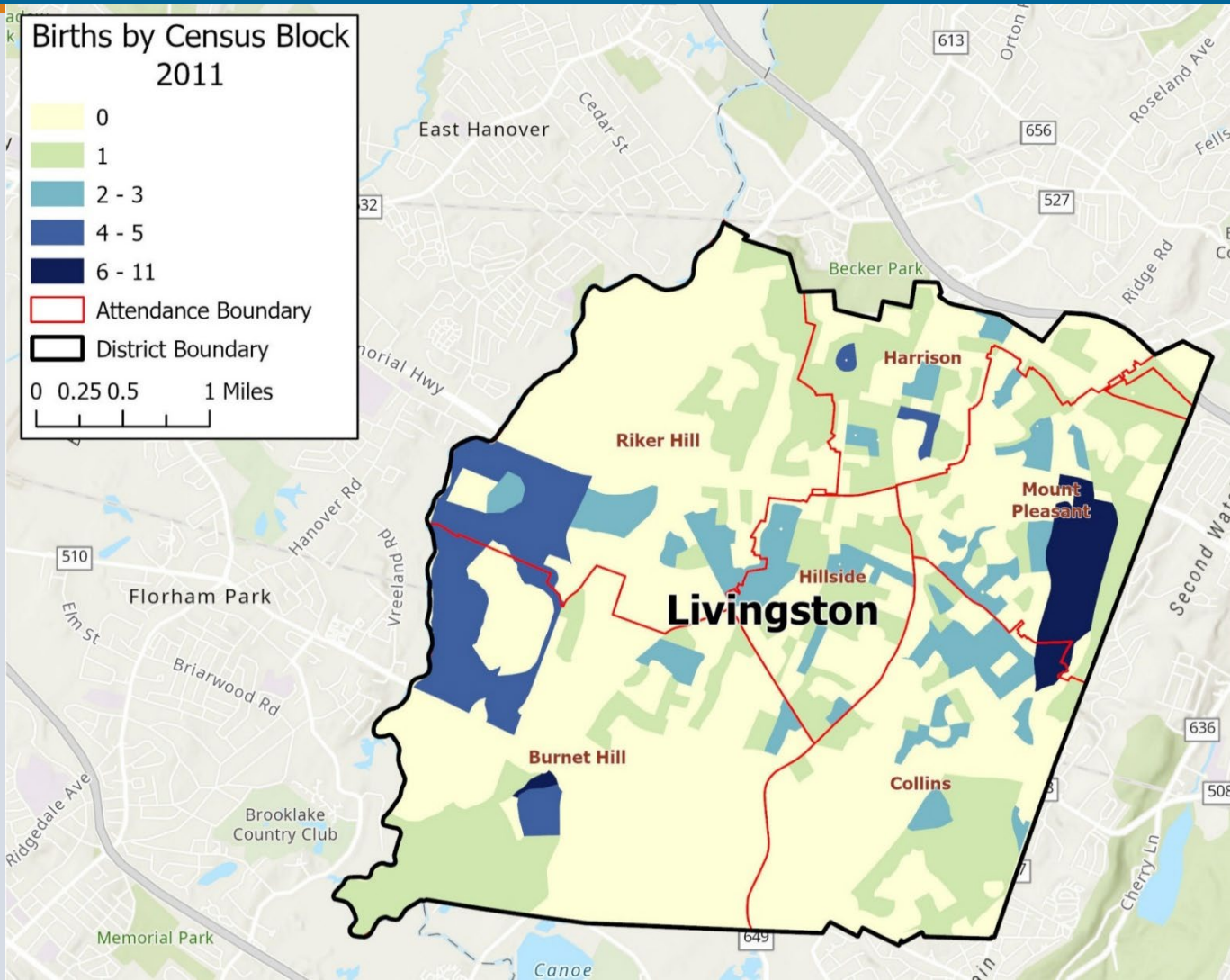
BIRTH COUNTS AND BIRTH-TO-KINDERGARTEN SURVIVAL RATIOS

Birth Year	Number of Births Livingston	Kindergarten Students Five Years Later	Birth-to-Kindergarten Survival Ratio
2011	235	336	1.430
2012	260	353	1.358
2013	190	371	1.953
2014	229	346	1.511
2015	217	332	1.530
2016	255	392	1.537
2017	259	367	1.417
2018	242	433	1.789
2019	212	340	1.604
2020	213	361	1.695
2021	209	N/A	N/A
2022	228	N/A	N/A
2023	215	N/A	N/A

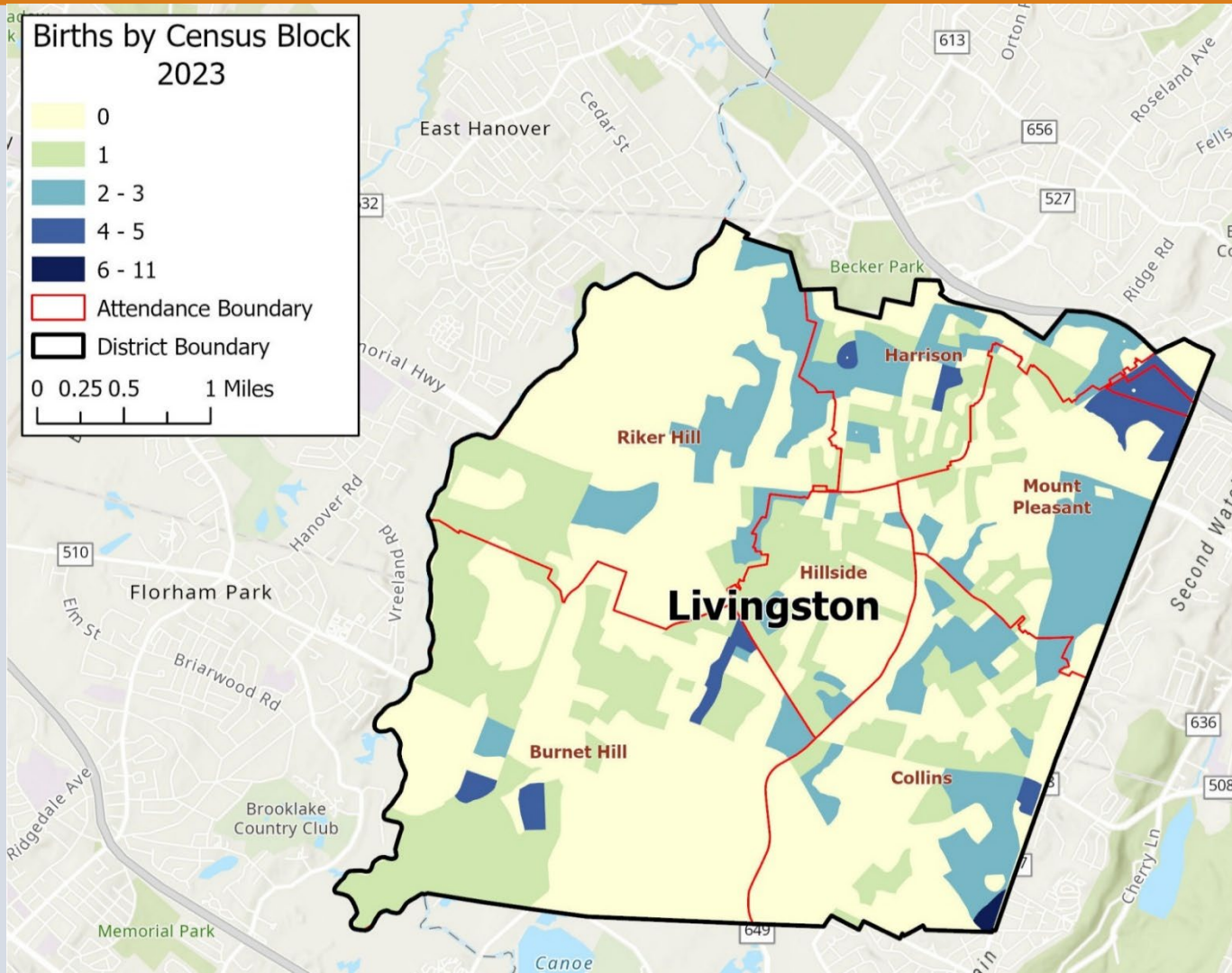
BIRTHS BY ATTENDANCE AREA

Birth Year	Burnet Hill	Collins	Harrison	Hillside	Mount Pleasant	Riker Hill	Unknown
2011	35	59	36	39	35	24	7
2012	28	61	55	34	38	41	3
2013	28	35	39	38	20	27	3
2014	34	57	45	30	29	33	1
2015	24	56	38	21	31	46	1
2016	35	65	59	38	30	24	4
2017	25	65	49	39	33	43	5
2018	26	50	40	42	32	46	6
2019	25	40	50	35	25	35	2
2020	18	56	39	45	25	24	6
2021	32	46	35	40	24	32	0
2022	30	58	34	38	28	40	0
2023	37	53	47	32	26	20	0
Total 2011-2023	377	701	566	471	376	435	
Difference 2011-2023	+2	-6	+11	-7	-9	-4	

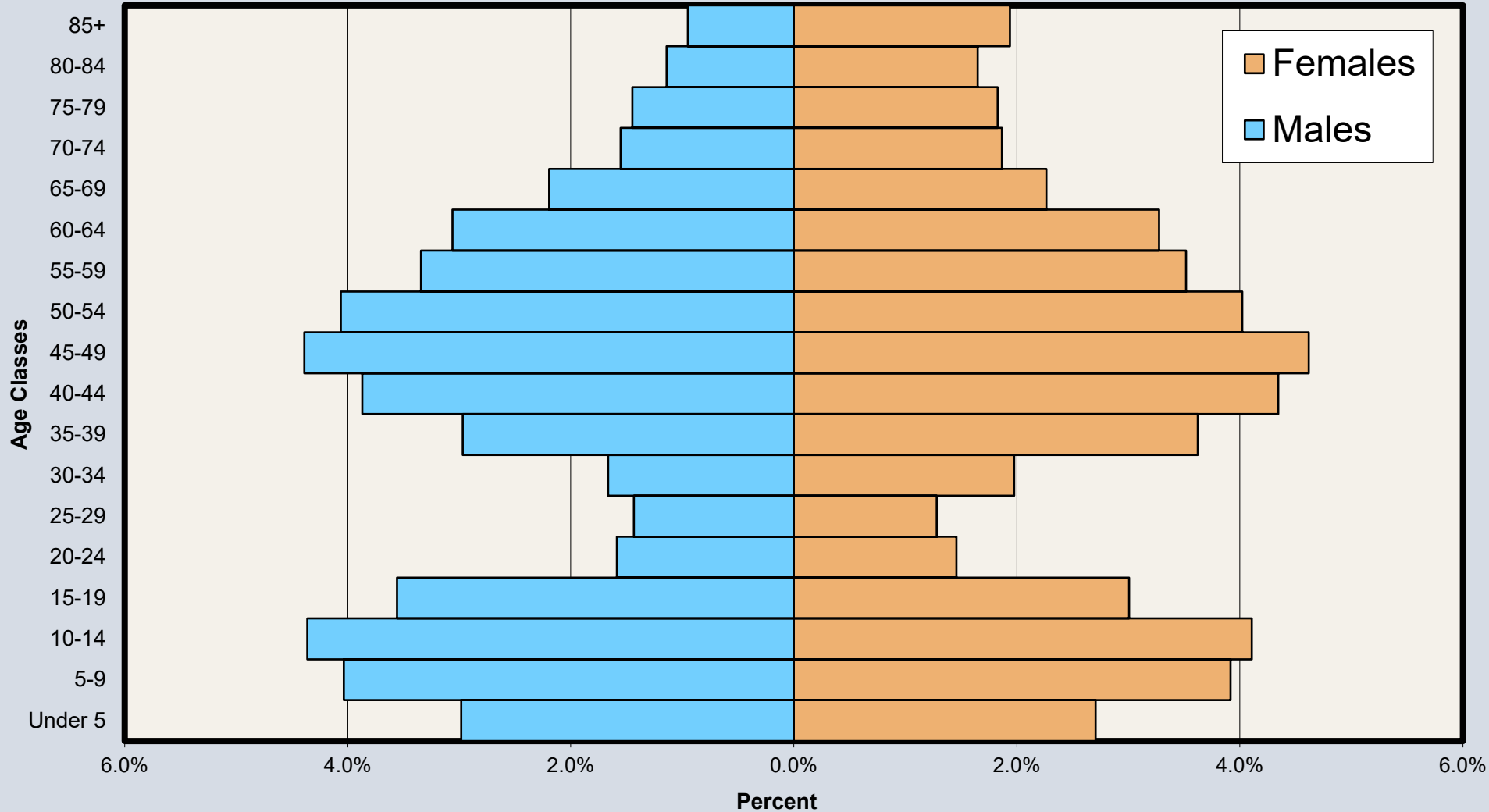
BIRTHS BY CENSUS BLOCK 2011



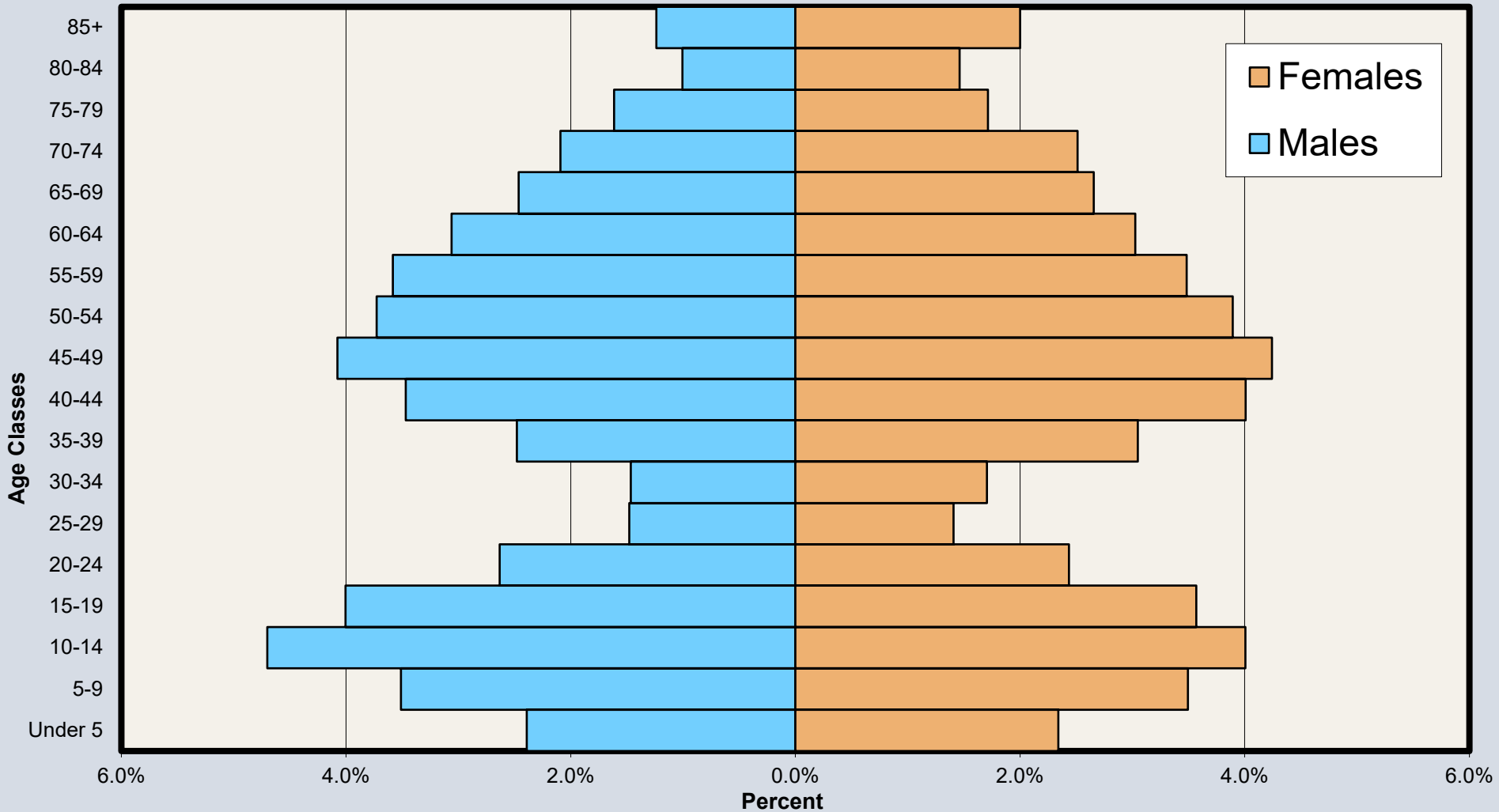
BIRTHS BY CENSUS BLOCK 2023



POPULATION PYRAMID LIVINGSTON 2010 CENSUS



POPULATION PYRAMID LIVINGSTON 2020 CENSUS



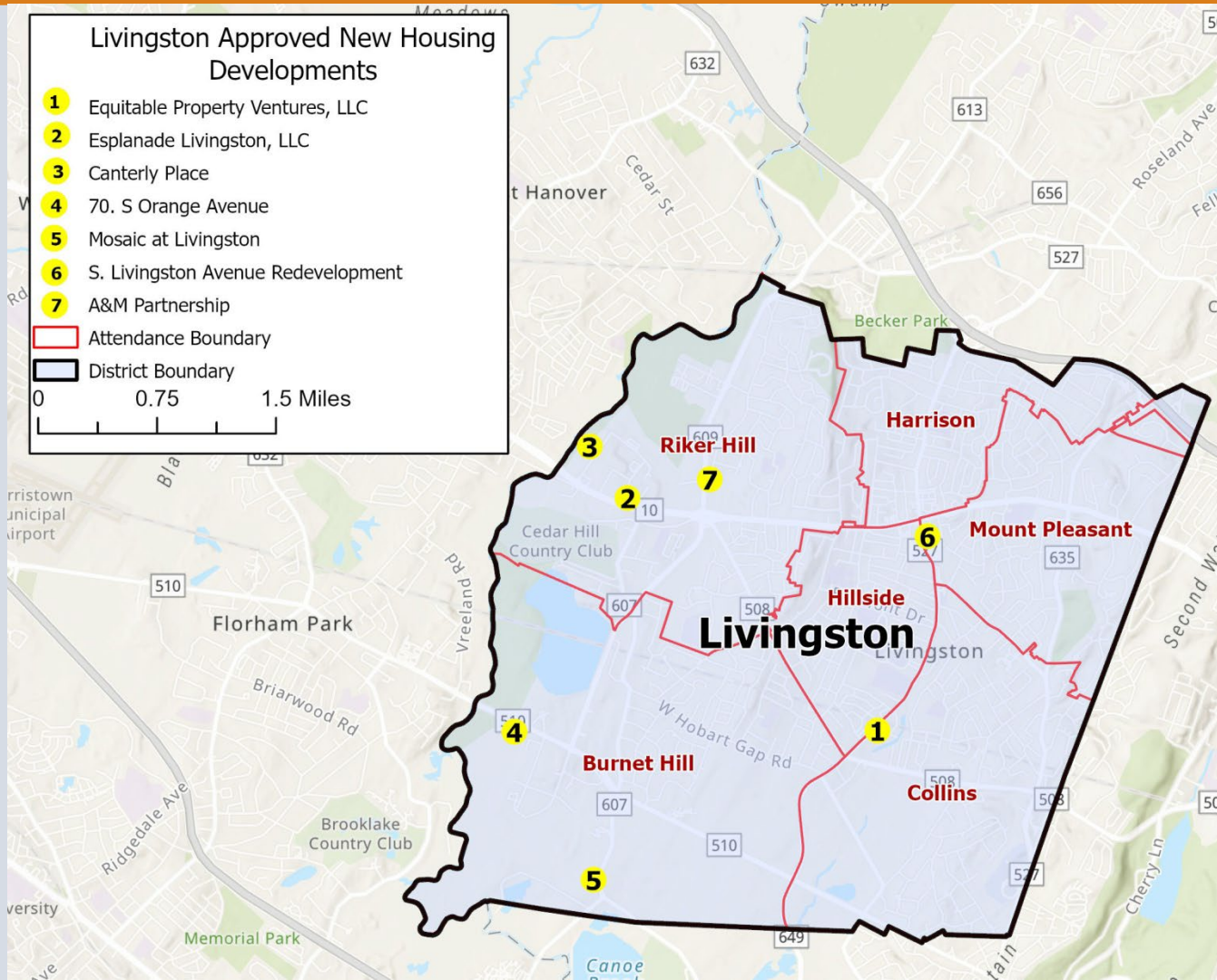
CHANGE IN MALES AND FEMALES 2010-2020 LIVINGSTON

Age Group	Males		Females	
	Numerical Change	Percentage Point Change	Numerical Change	Percentage Point Change
Under 5	-127	-0.6	-62	-0.4
5-9	-85	-0.5	-55	-0.4
10-14	+192	+0.3	+49	-0.1
15-19	+210	+0.4	+235	+0.6
20-24	+359	+1.0	+335	+1.0
25-29	+42	0.0	+65	+0.1
30-34	-30	-0.2	-46	-0.3
35-39	-95	-0.5	-109	-0.6
40-44	-49	-0.4	-20	-0.3
45-49	-12	-0.3	-27	-0.4
50-54	-25	-0.3	+39	-0.1
55-59	+141	+0.2	+58	0.0
60-64	+60	0.0	-14	-0.3
65-69	+128	+0.3	+167	+0.4
70-74	+199	+0.5	+239	+0.6
75-79	+81	+0.2	0	-0.1
80-84	-20	-0.1	-26	-0.2
85+	+109	+0.3	+58	+0.1

APPROVED NEW HOUSING IN LIVINGSTON

- Potential for 1,062 non age-restricted new housing units, all of which will be multi-family (apartments or townhouses).
- Half (50%) of the units will be in the Riker Hill attendance area.
- Largest project is Canterly Place (300 apartment units) - in process of leasing
- 177 public school children are projected in grades K-12 (K-5 = 82, 6-8 = 42, and 9-12 = 53).

APPROVED NEW HOUSING IN LIVINGSTON



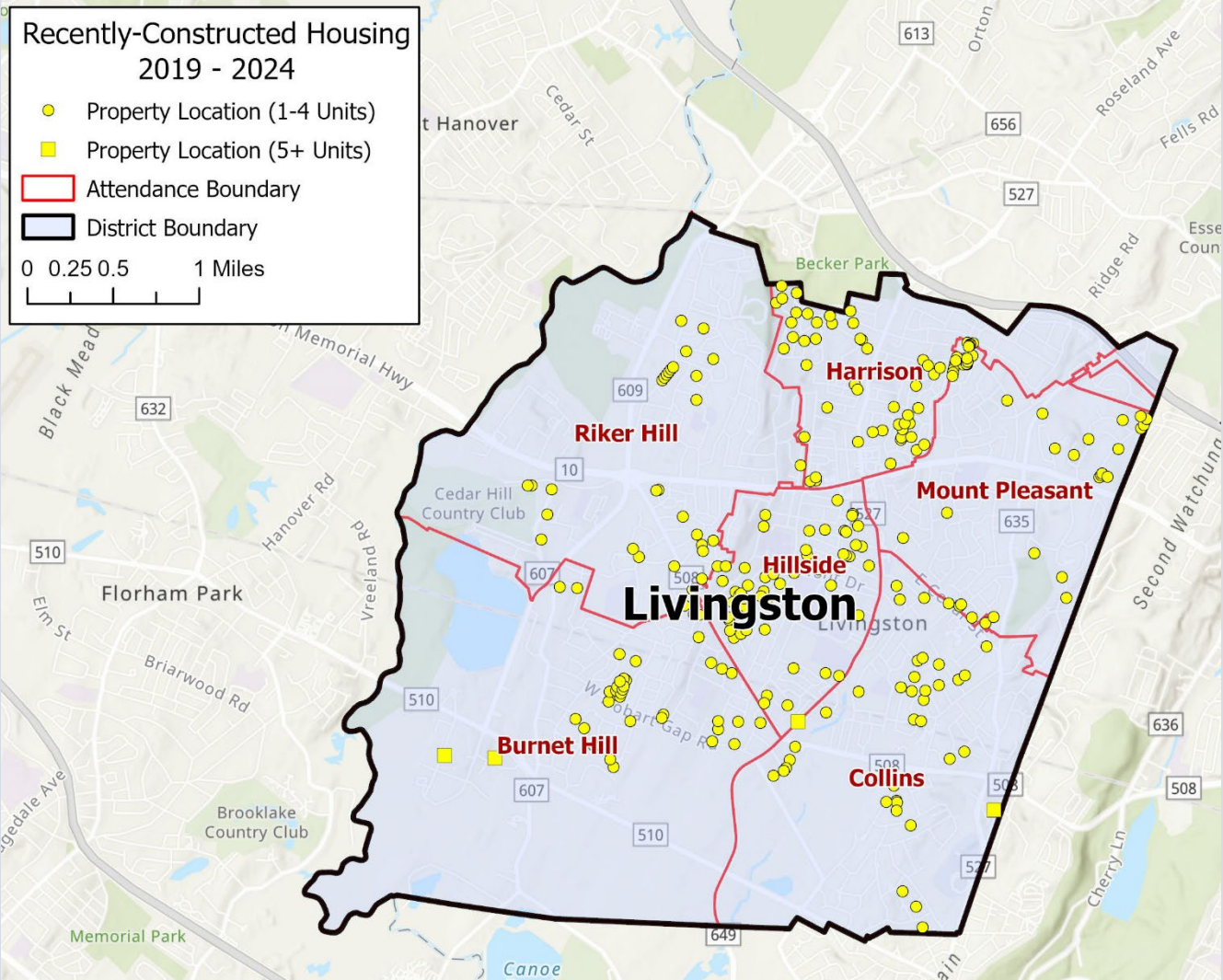
POTENTIAL FUTURE DEVELOPMENTS WITH ADOPTED ZONING

Development (Location)	Elementary Attendance Area	Number of Units	Bedroom Distribution	Housing Type	Estimated Public School Children (K-12)
Former Lexus (576-586 W. Mt. Pleasant Avenue)	Riker Hill	50	Market-Rate Apts. (40) 20 1-BR 20 2-BR Affordable Apts. (10) 2 2-BR 6 2-BR 2 3-BR	Apartments (Market-Rate and Affordable)	14
Sears Site/Mall (111 Eisenhower Parkway)	Riker Hill	376	Market-Rate Apts. (301) 102 1-BR 199 2-BR Affordable Apts. (75) 15 1-BR 45 2-BR 15 3-BR	Apartment (Market-Rate and Affordable)	64
Total			426 Units		78

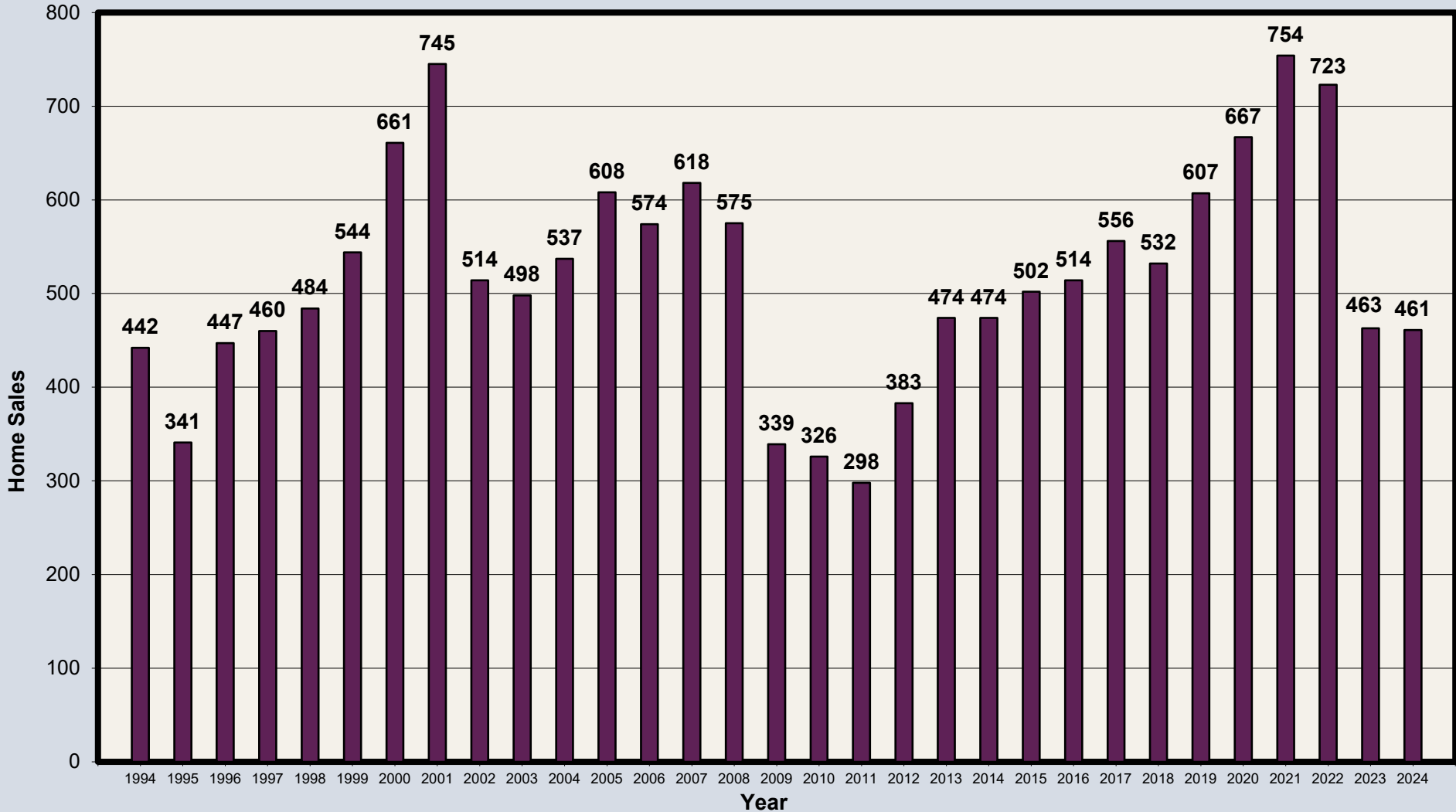
HISTORICAL RESIDENTIAL CONSTRUCTION 2019-2024

Year	Burnet Hill	Collins	Harrison	Hillside	Mt. Pleasant	Riker Hill	Total
2019	54	4	2	6	16	5	87
2020	30	4	4	2	1	2	43
2021	41	9	5	7	13	5	80
2022	72	4	12	12	6	4	110
2023	7	9	16	21	6	8	67
2024	172	33	10	6	4	7	232
Total	376	63	49	54	46	31	619

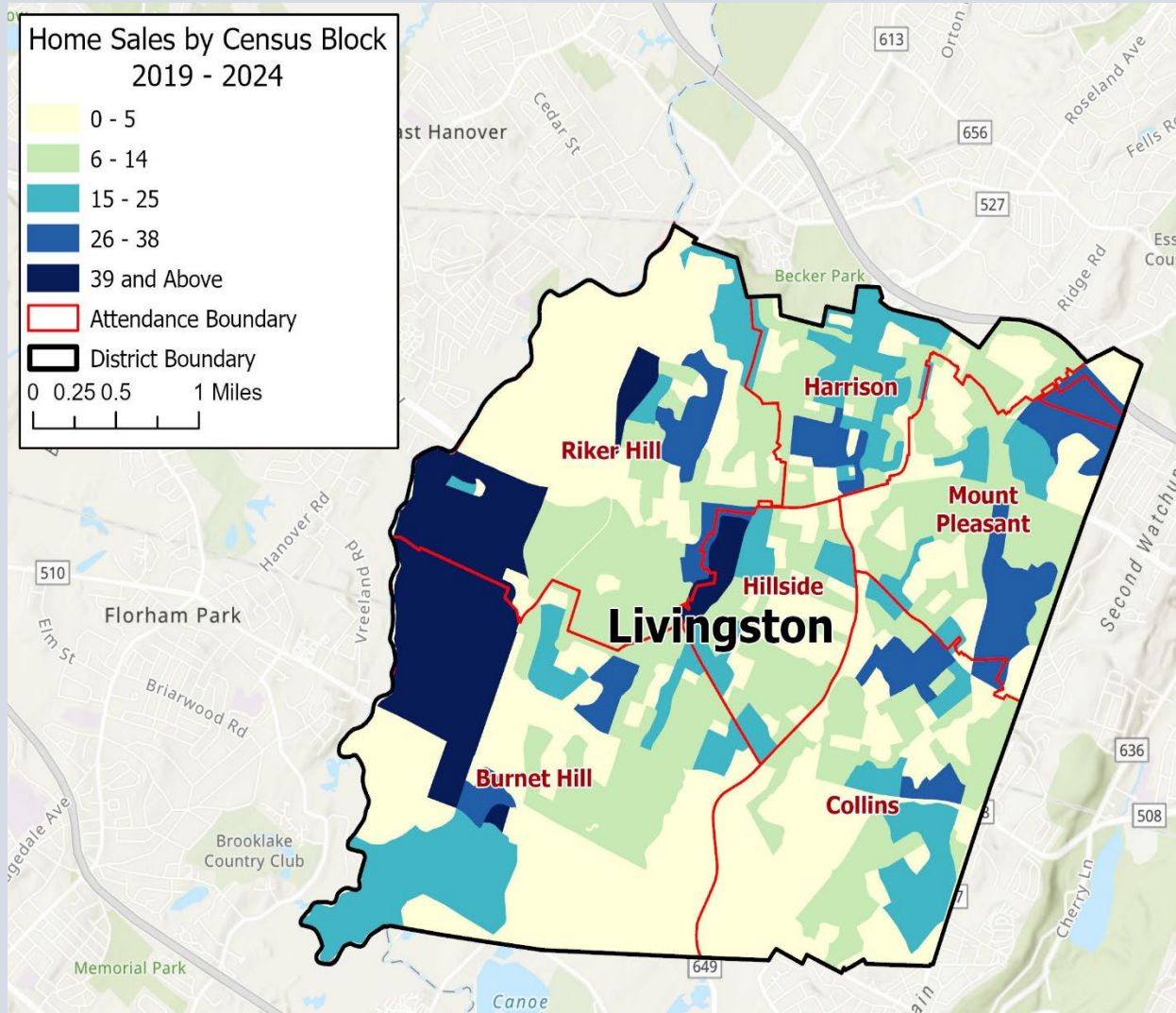
HISTORICAL RESIDENTIAL CONSTRUCTION



HOME SALES LIVINGSTON 1994-2024



HOME SALES LIVINGSTON 2019-2024



ENROLLMENT PROJECTIONS

- Enrollments were projected from 2026-27 through 2030-31, a 5-year period.
- Two sets of projections- baseline and adjusted for housing growth (assuming all approved housing gets constructed).
- Enrollments are projected to increase throughout the projection period.
- Baseline – 6,509 in 2030-31 (+138.5)
- Adjusted for Housing Growth – 6,566 in 2030-31 (+195.5)

ENROLLMENT PROJECTIONS BY GRADE CONFIGURATION

Historical	PK-5		6-8		9-12	
2025-26	2,768		1,568		2,034.5	
Projected	PK-5 Baseline	PK-5 Adjusted	6-8 Baseline	6-8 Adjusted	9-12 Baseline	9-12 Adjusted
2026-27	2,786	2,806	1,564	1,564	2,029	2,029
2027-28	2,736	2,768	1,606	1,609	2,071	2,071
2028-29	2,778	2,813	1,564	1,574	2,099	2,099
2029-30	2,716	2,753	1,653	1,669	2,117	2,117
2030-31	2,738	2,770	1,572	1,594	2,199	2,202
5-year Change	-30	+2	+4	+26	+164.5	+167.5

CAPACITY ANALYSIS

School	Capacity	Current Enrollment 2025-26	Difference	Projected Enrollment 2030-31	Difference
Burnet Hill E.S. (PK-5)	401	462	-61	582	-181
Collins E.S. (K-5)	385	439	-54	419	-34
Harrison E.S. (K-5)	455	543	-88	541	-86
Hillside E.S. (K-5)	375	472	-97	491	-116
Mt. Pleasant E.S. (K-5)	389	387	+2	306	+83
Riker Hill E.S. (K-5)	434	465	-31	431	+3
Mt. Pleasant M.S. (6)	470	508	-38	498	-28
Heritage M.S. (7-8)	966	1,060	-94	1,096	-130
Livingston H.S. (9-12)	1,661	2,034.5	-373.5	2,202	-541

MAPPING

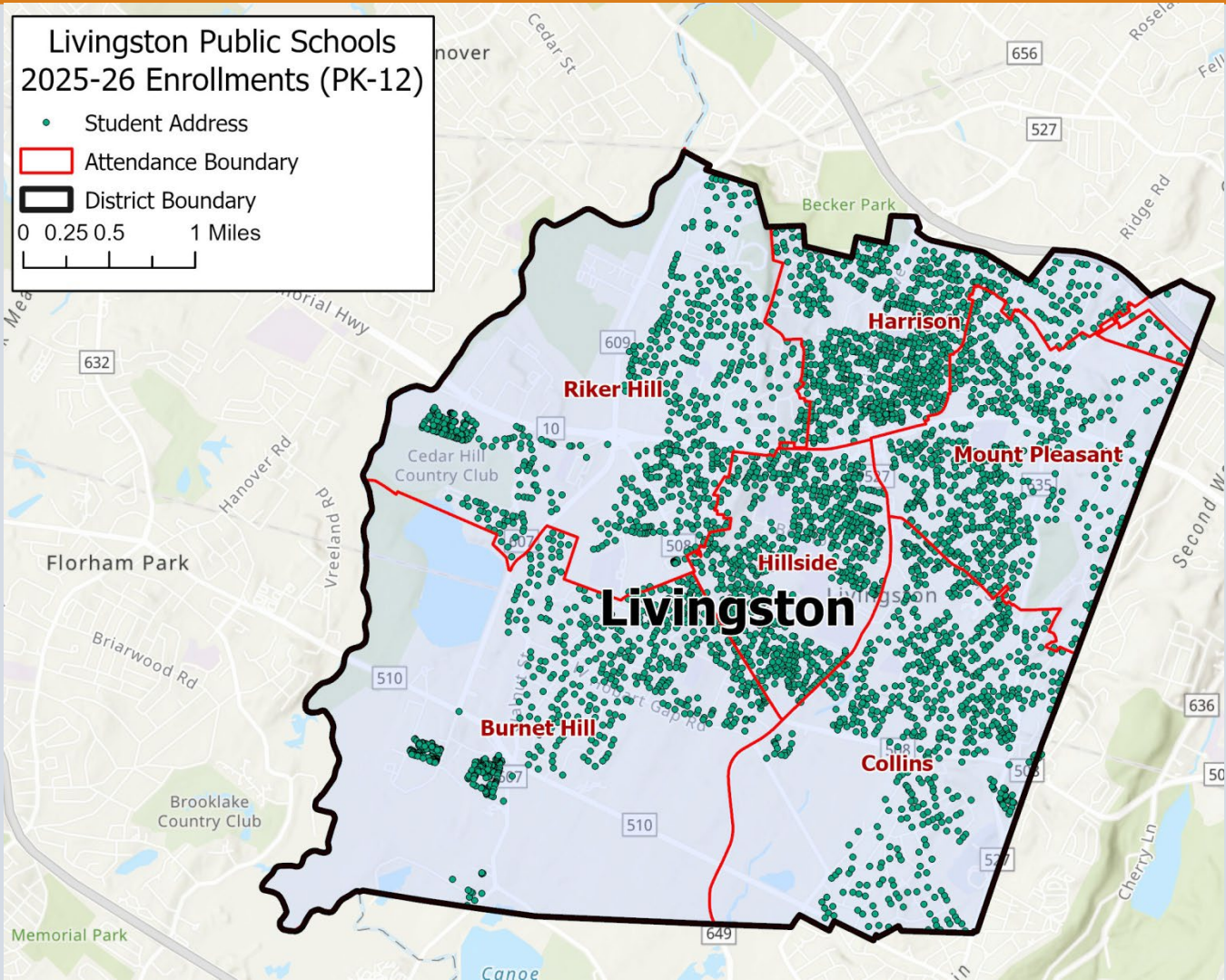
- Maps were created to compare student residential locations at two different times: 2019-20 and 2025-26.
 - Student counts by census block
 - Student density by census block
 - Student yield by census block

2025-26 STUDENTS (PK-12)

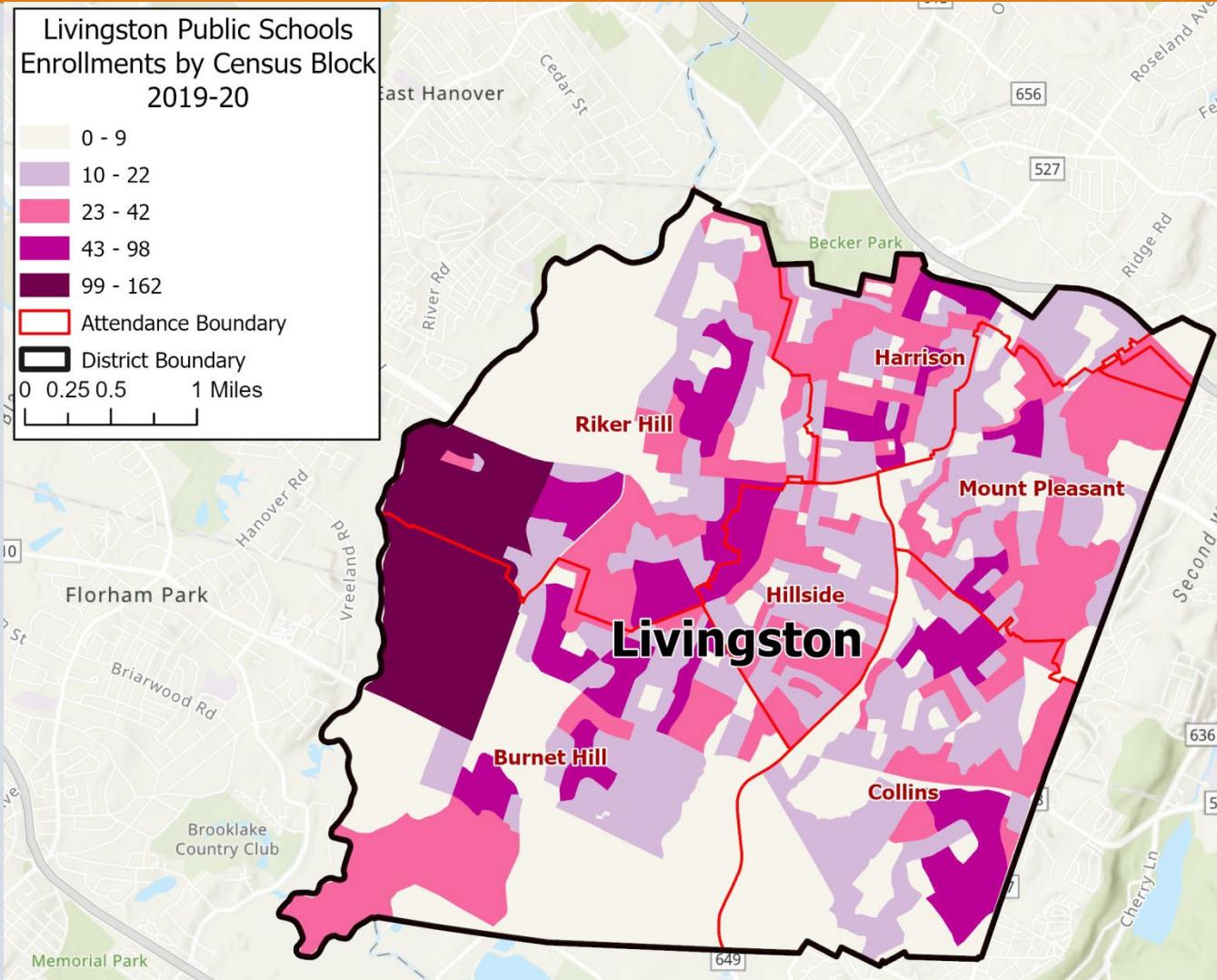
**Livingston Public Schools
2025-26 Enrollments (PK-12)**

- Student Address
- ▭ Attendance Boundary
- ▭ District Boundary

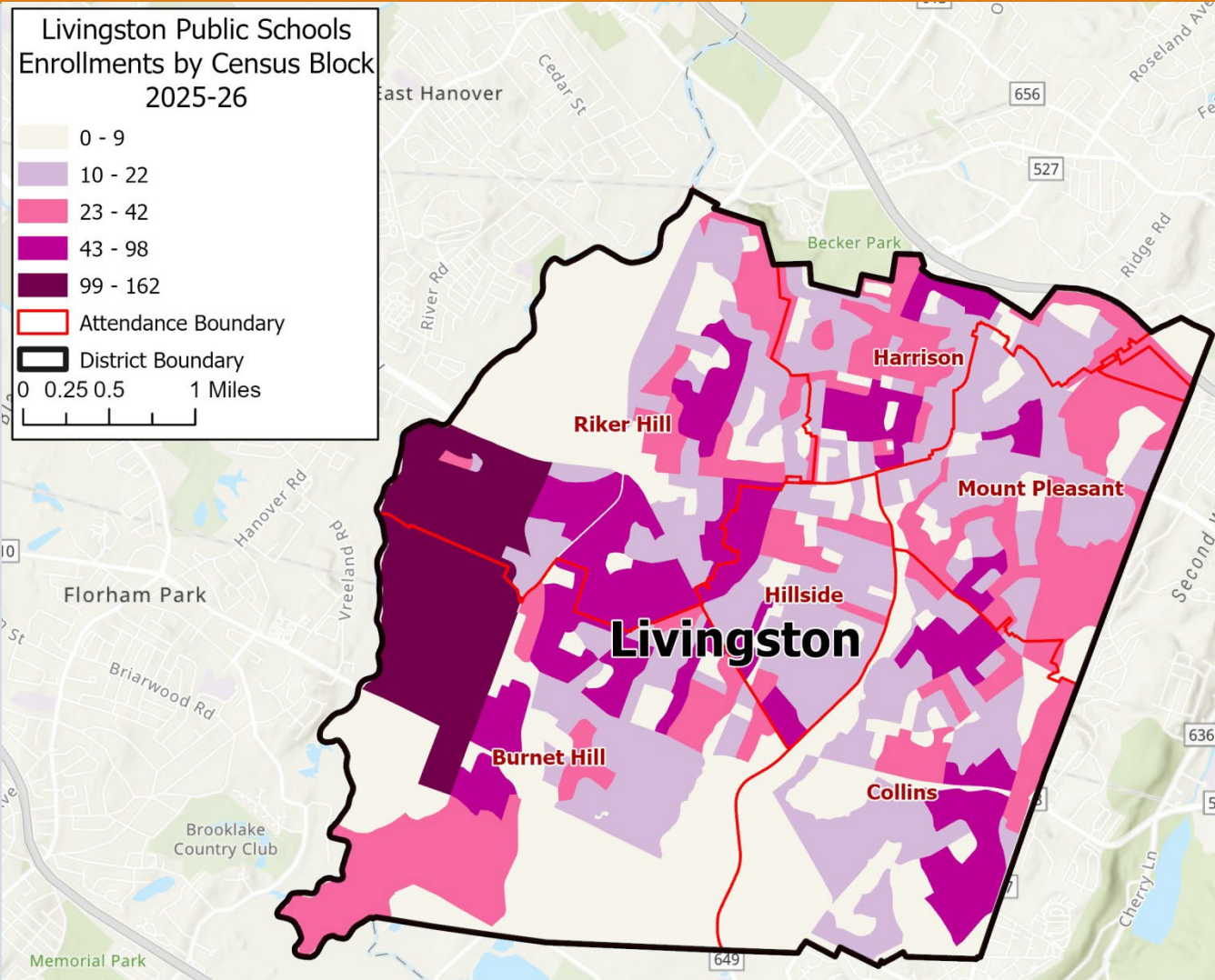
0 0.25 0.5 1 Miles



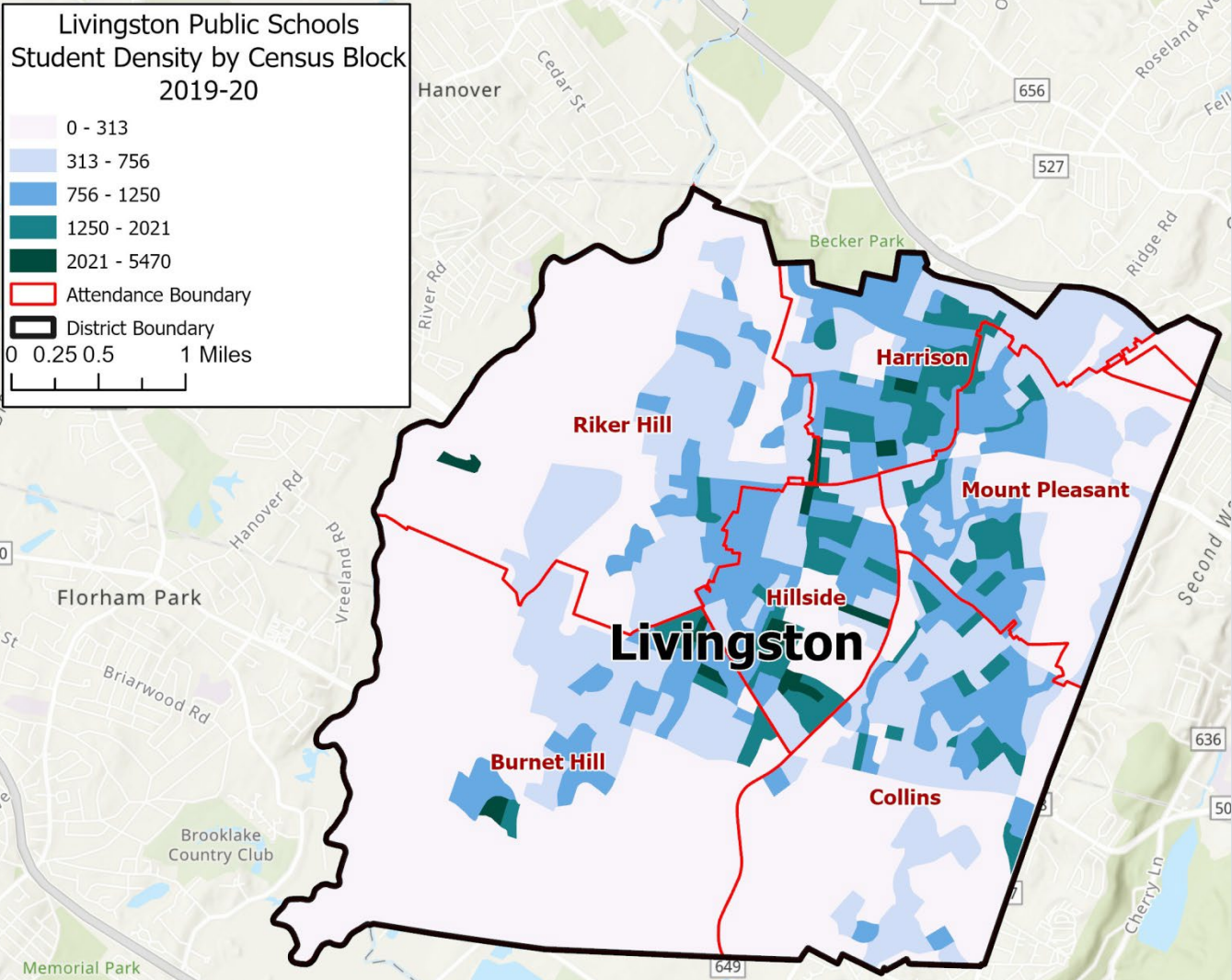
STUDENT COUNTS BY CENSUS BLOCK 2019-20



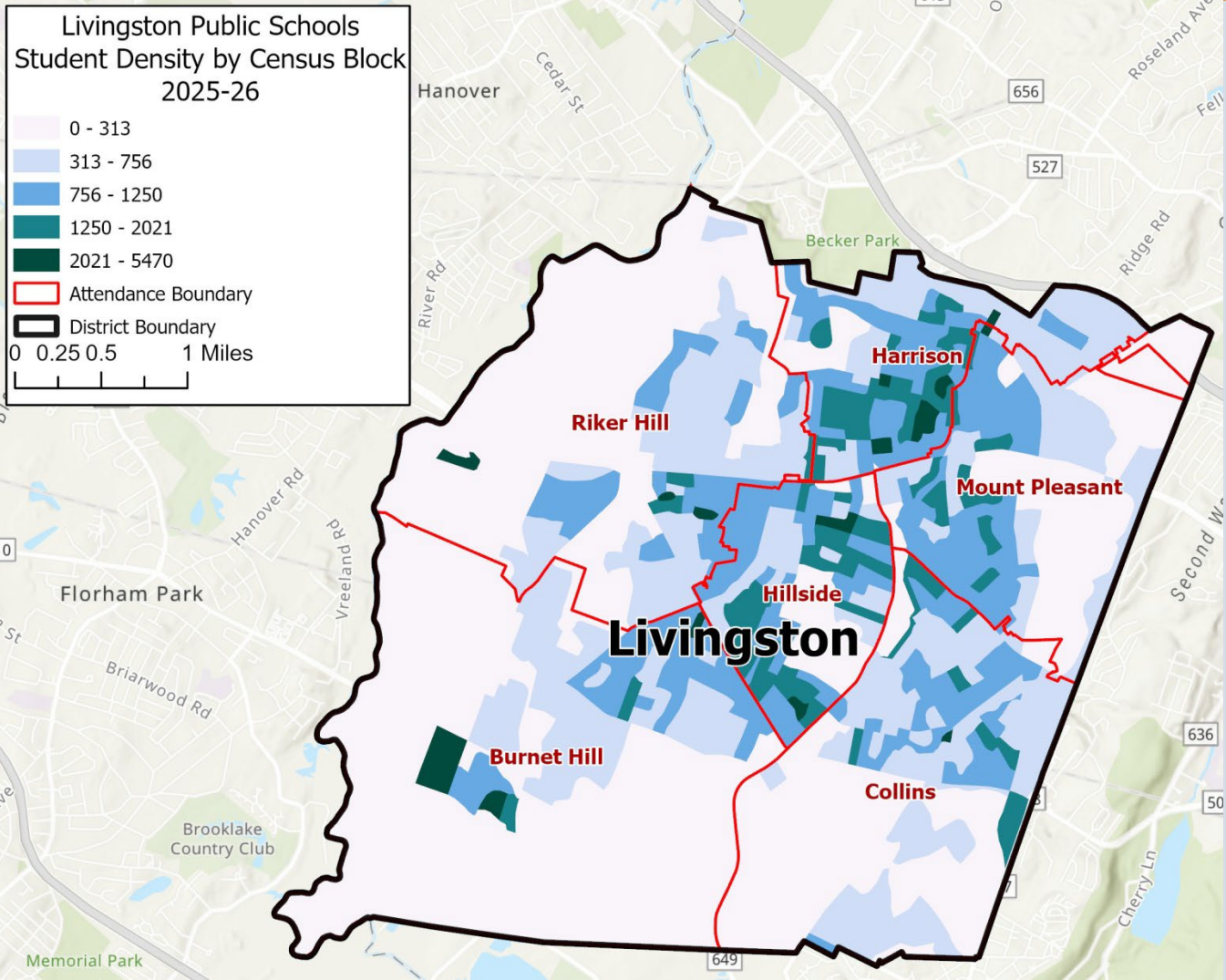
STUDENT COUNTS BY CENSUS BLOCK 2025-26



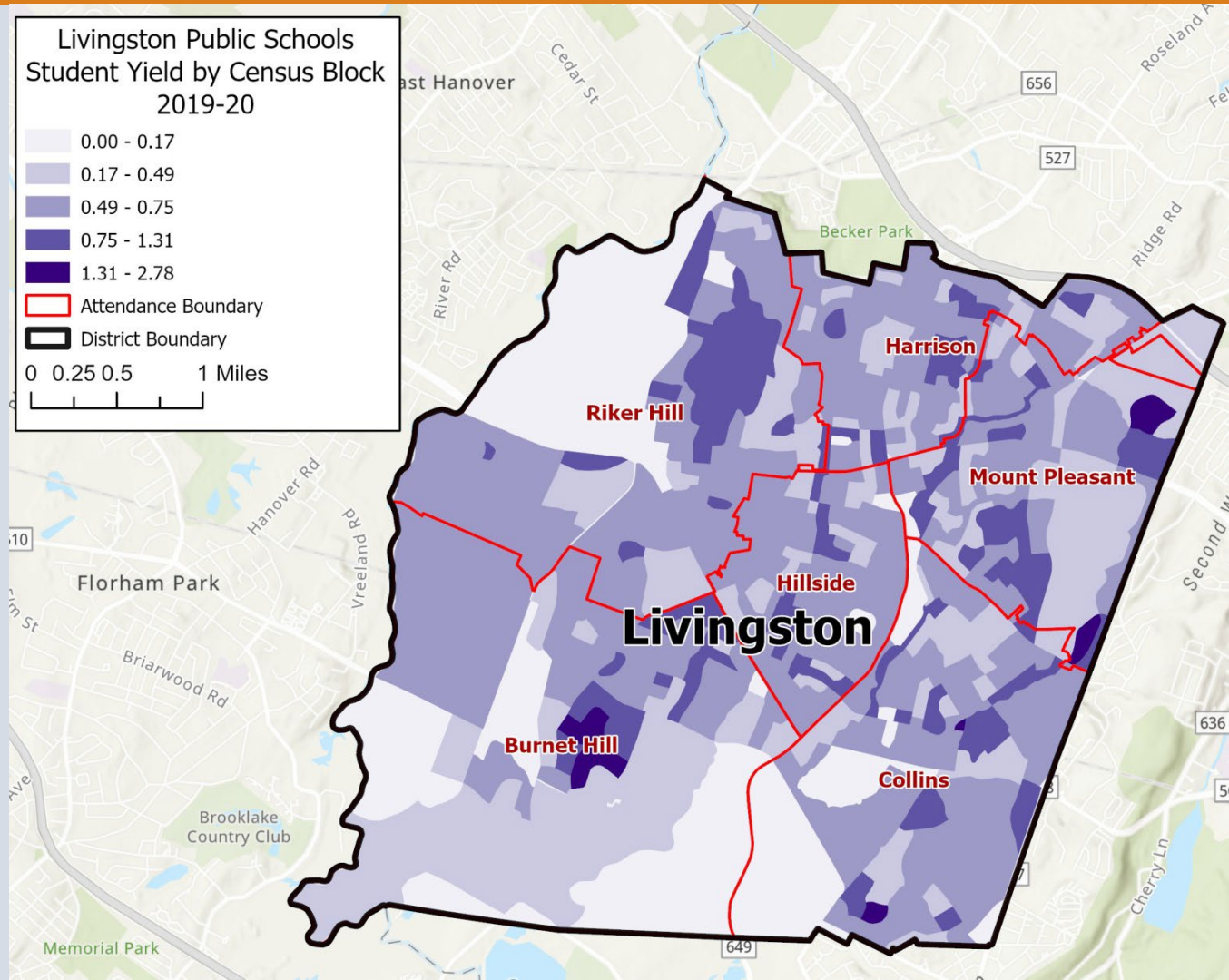
STUDENT DENSITY BY CENSUS BLOCK 2019-20



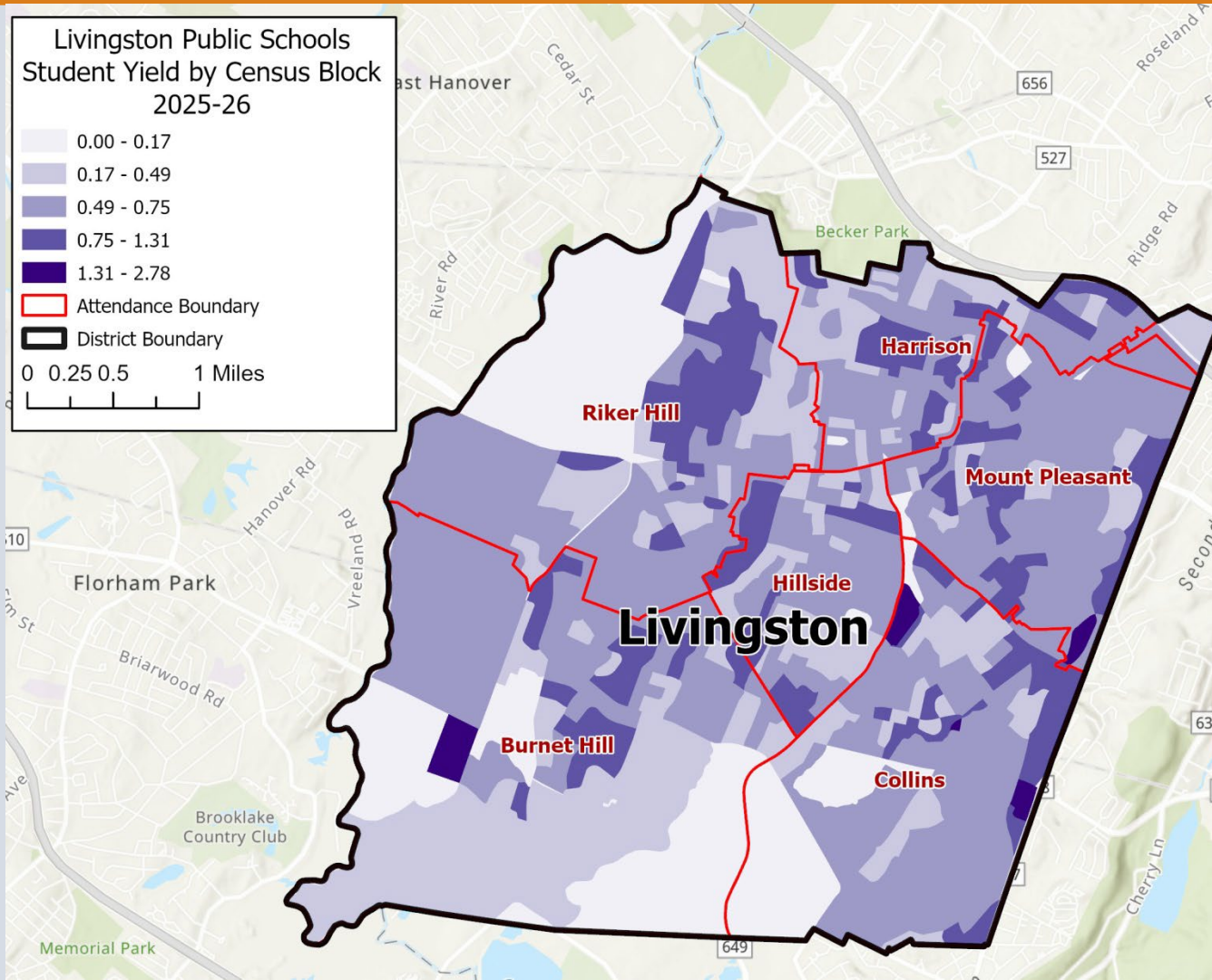
STUDENT DENSITY BY CENSUS BLOCK 2025-26



STUDENT YIELD BY CENSUS BLOCK 2019-20



STUDENT YIELD BY CENSUS BLOCK 2025-26



SUMMARY

- Enrollments are projected to steadily increase throughout the 5-year projection period.
- 1,062 new housing units are projected to come online, resulting in a projected enrollment gain of 195.5 students in the adjusted projections.
- Enrollment gain is also due to inward migration, as 11 of the 13 grade progressions are showing an influx of children from one year to the next.
- Enrollment gain is not projected to be uniform across the grade configurations; largest gain is projected to occur in the high school grades as the larger existing cohorts advance into the upper grades.
- Elementary and middle school enrollments are not projected to change significantly.

QUESTIONS

