



WHAT ARE GENERATIVE AI AND LARGE LANGUAGE MODELS?

Artificial Intelligence (AI) refers to technologies that allow computers to recognize patterns, make predictions, and assist with problem-solving—similar to how humans think and learn. Many familiar tools already use AI, such as voice assistants, video recommendations, spelling/grammar supports, and translation apps.

Large Language Models (LLMs) are a type of AI trained on extensive text data. These tools can create human-like writing, summarize information, answer questions, or help brainstorm.

Generative AI specifically creates new outputs—such as text, images, code, or audio—based on patterns it has learned. While AI may appear “smart,” it does not have feelings, opinions, or lived experience. It can still produce incorrect or biased information, so human judgment remains essential.

WHEN STUDENTS MAY USE AI ON A GRADED ASSIGNMENT

Students may use Generative AI **only when a teacher has given explicit permission** for a specific assignment or activity.

Students **must cite how AI was used**, following teacher guidance. AI is used as a resource, not as a substitute for their own work.

ARTIFICIAL INTELLIGENCE IN REGION 15

AI should enhance learning in Pomperaug Regional School District 15.

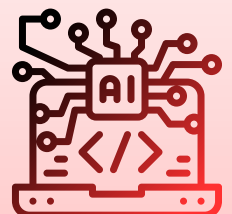
AI is a tool that supports teaching and learning; it **does not replace** the thinking, effort, or creativity of students or teachers, nor does it replace the relationships that make learning meaningful.

AI can:

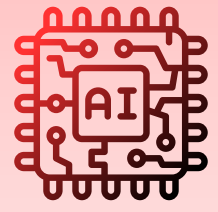
- Explain difficult ideas
- Break down complex concepts
- Help generate ideas and vocabulary
- Provide summaries to support learning
- Create scaffolds for diverse learners



AI USAGE IN REGION 15 INCORPORATES OUR PORTRAIT OF A LEARNER: EMPOWERED LEARNER, ETHICAL CONTRIBUTOR, COMMUNITY-MINDED, INCLUSIVE RESPONSIBILITY, PRODUCTIVE COLLABORATORS, EFFECTIVE COMMUNICATORS.



ROLES & RESPONSIBILITIES



Families will:

- **Support Region 15's Acceptable Use Policy** and encourage the safe, ethical, and productive use of AI at school and home.
- Encourage open dialogue about **responsible and ethical digital behaviors**.
- **Communicate any questions or concerns** about AI use to school staff, such as a teacher, counselor or administrator.

Students will:

- Use AI **safely, ethically, responsibly** and **disclose their use** of it.
- Think critically—checking AI outputs for **credibility, accuracy, and bias**.
- Demonstrate **empathy, integrity, and cultural awareness** when using or sharing AI-generated content.
- Report concerns or misuse to a trusted adult.

Teachers will:

- Establish classroom norms for **appropriate AI use**, aligned with district expectations.
- Teach students to evaluate AI outputs and think critically.
- Ensure equitable access and guide students in maintaining academic integrity.
- Refer to existing **Cheating and Academic Dishonesty Handbooks** where applicable. (Resp. Use, MS, HS)

Administration will:

- Maintain district guidelines for **safe, ethical AI use**.
- Support **professional development** in the area of AI literacy.
- Ensure compliance with student **data privacy laws**.
- Review policies regularly as technology evolves.

POSSIBLE RISKS & SAFE USE REMINDERS

AI may produce:

- **Incorrect or misleading information**
- **Biased viewpoints**
- **Altered or deceptive media** (“deepfakes”)



To stay safe:

- **Never upload personal or confidential information** (yours or others).
- **Verify information** using trusted, human-reviewed sources.
- Use AI only in ways that **do not cause harm** to yourself or others.

EXAMPLES OF MISUSE

- **Submitting AI-generated work as your own.** Turning in assignments created fully or partially by AI **without proper citation** or acknowledgement.
- Using AI to **produce** content dishonestly.
- Sharing **false, biased, or harmful content** created by AI.
- Using AI on an assignment **without teacher permission**.



Portions of this document were drafted with the assistance of ChatGPT (OpenAI, 2025) and reviewed, edited and approved by the Region 15 AI Guidelines Task Force.