



PROJECT
TWENTYSEVEN



Design Presentation

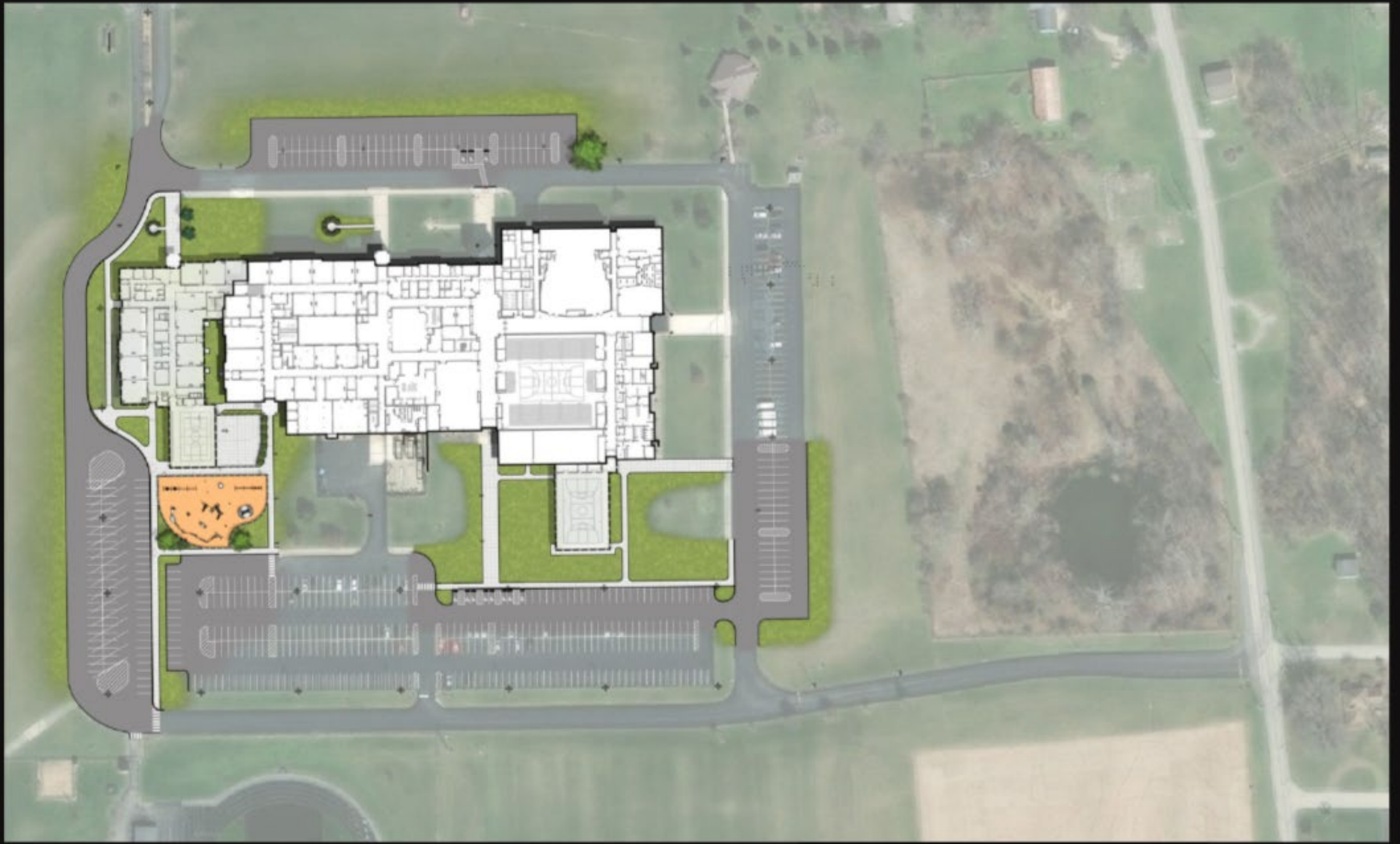


www.cabeard.k12.in.us

PROJECT 27

For more than thirteen years, Charles A. Beard Memorial Schools has been intentionally working toward a single, long-term goal: consolidating our schools onto one secure, efficient campus while closing aging, costly facilities that no longer meet modern educational or safety expectations. From the beginning, this effort has been guided by three non-negotiables: student safety must come first, the design must meet the needs of our community and future learners, and the project must remain tax neutral. Achieving that vision required discipline and patience. The district made the deliberate decision to pay down existing debt ahead of schedule, creating the financial capacity to invest without increasing the tax rate. Over the years, we have explored numerous configurations, worked with multiple architectural and construction partners, and refined designs as educational needs, safety standards, and costs evolved. That process ultimately led us to a solution developed with CSO Architects and Meyer Najem that delivers the facilities our students and staff need, strengthens safety and efficiency, and stays within the financial structure our taxpayers can support. This project is not a sudden idea; it is the result of more than a decade of careful planning, fiscal responsibility, and a commitment to doing this the right way.



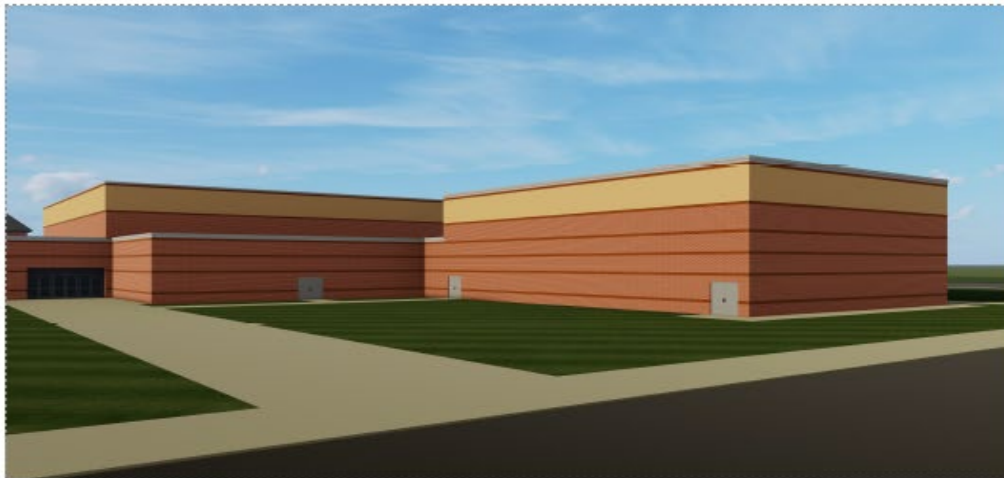




NORTH EXTERIOR - ELEMENTARY ENTRANCE



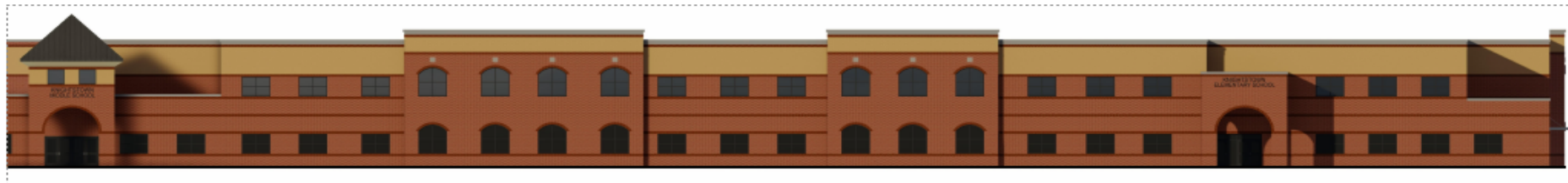
SOUTH EXTERIOR - ELEMENTARY GYM



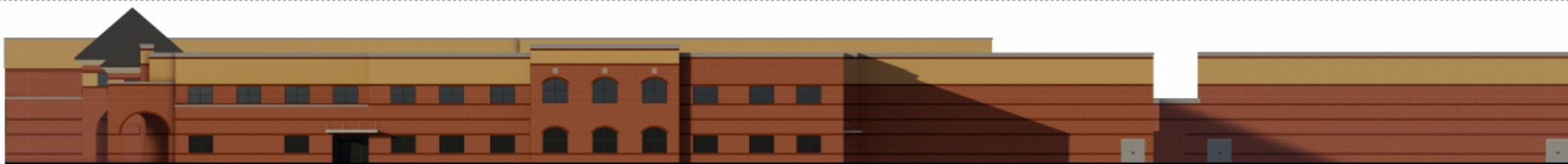
SOUTH EXTERIOR - GYMNASIUM



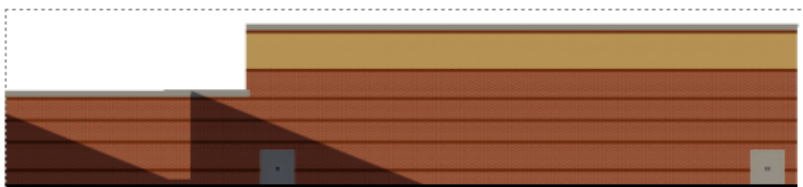
WEST EXTERIOR - BUS LOT ENTRANCE



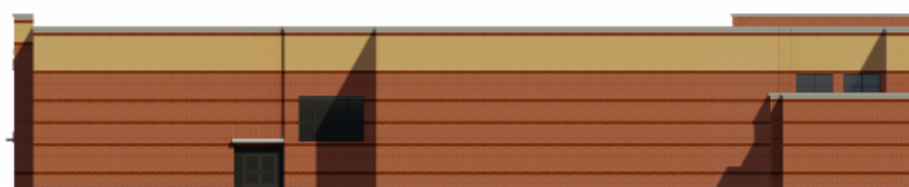
NORTH EXTERIOR ELEVATION - SCHOOL ENTRANCE



WEST EXTERIOR ELEVATION - BUS LOT ENTRANCE



WEST EXTERIOR ELEVATION - FIELDHOUSE

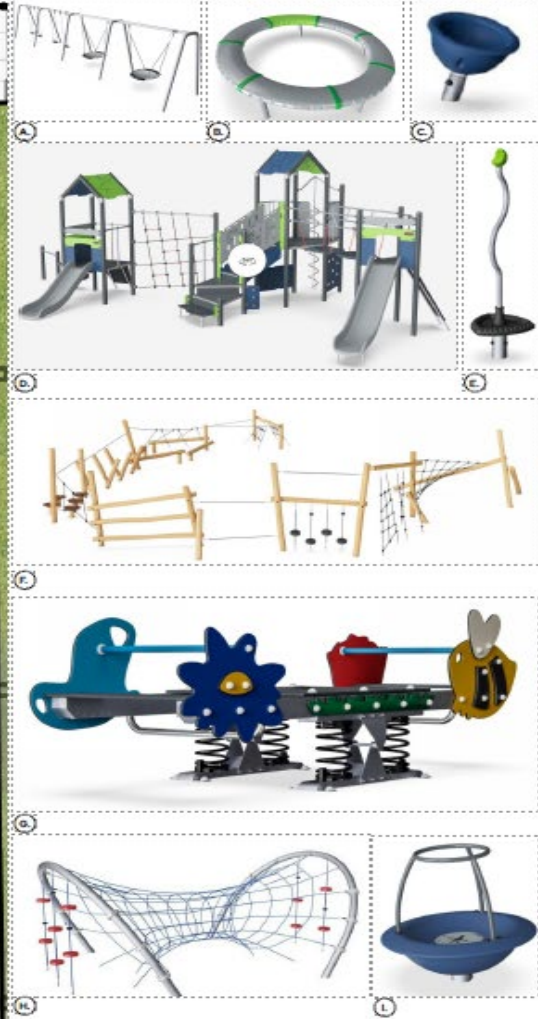


SOUTH EXTERIOR ELEVATION - ELEMENTARY GYM



FIRST FLOOR PLAN
12/23







ELEMENTARY GYMNASIUM



ELEMENTARY CAFETERIA



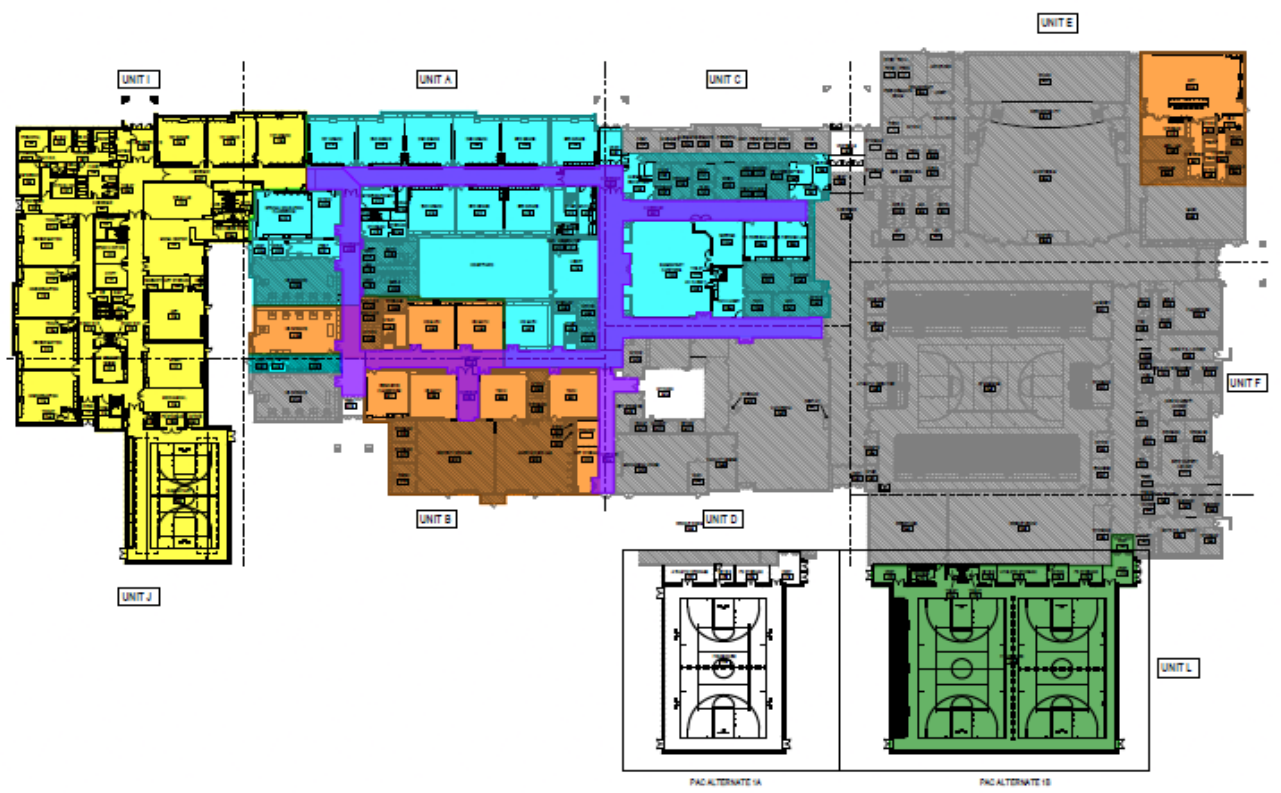
TYPICAL CLASSROOM



MEDIA CENTER

	2026												2027											
	Jan	Feb	Mar	Apr	May	Jun	Jul	Aug	Sept	Oct	Nov	Dec	Jan	Feb	Mar	Apr	May	Jun	Jul	Aug	Sept	Oct	Nov	Dec
Building Construction Schedule																								
Phase 1 - New Elementary Addition Units I, J, K.1, K.2	1	2	3	4	5	6	7	8	9	10	11	12	13	14	15	16								
Phase 2 - New Athletic Center Unit L (Alternate)			1	2	3	4	5	6	7	8	9	10												
Phase 3 - HS Interior Renovations/Refurb. Units A, B, E, G, H				1	2	3	4	5	6	7	8													
Phase 4 - HS & MS Interior Renovations/Refurb. Units A, C, G					1	2						3	4	5	6	7	8	9	10					
Phase 5 - Corridor Floor Finish Replacement																		1	2					
Sitework Schedule																								
Phase 1 - Building Addition & Bus/Public Parking	1	2	3	4	5	6	7	8	9															
Phase 2 - Football, Front Drive, Visitor Parking			1	2	3	4	5	6																
Phase 3 - Top Coat Asphalt and Final Landscape																		1	2	3				
Total Construction Duration	1	2	3	4	5	6	7	8	9	10	11	12	13	14	15	16	17	18						

NOT FOR CONSTRUCTION



PROJECT: KNIGHTSTOWN SCHOOL IMPROVEMENTS
KNIGHTSTOWN, INDIANA

Overall Phasing Chart Schedule

CM-04