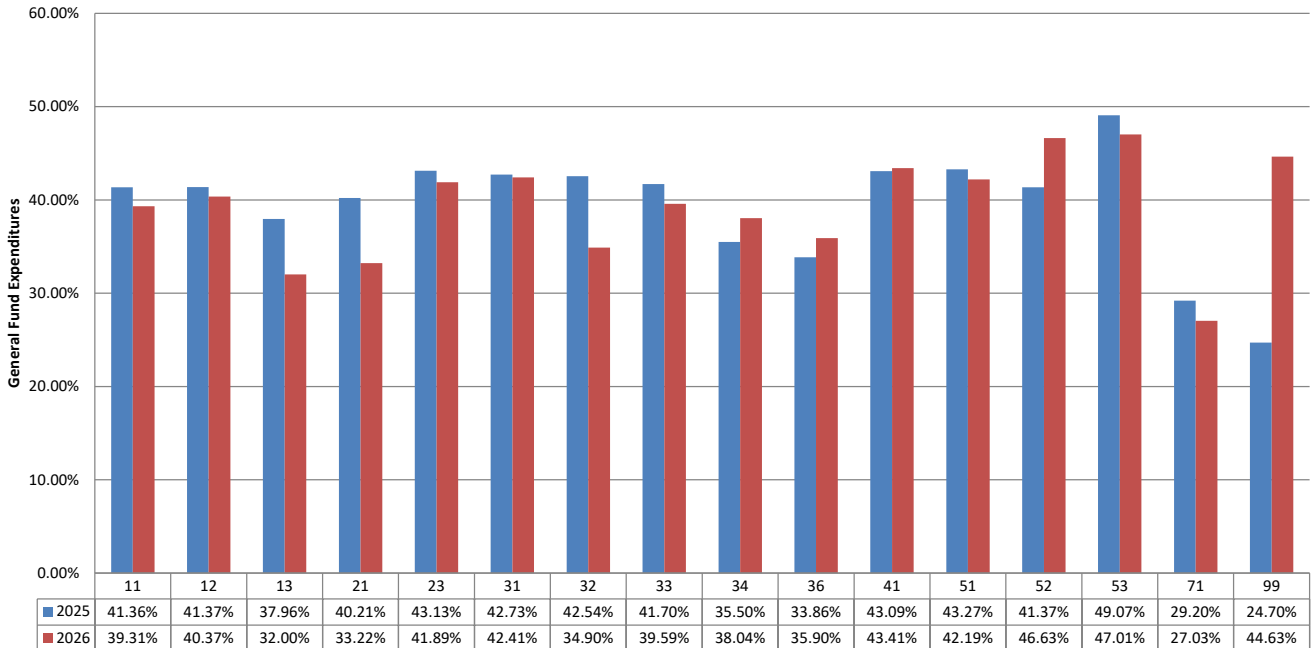


**TOMBALL INDEPENDENT SCHOOL DISTRICT**  
**FINANCIAL COMPARISON REPORT**  
As of November 30, 2025  
General Fund, Food Service, and Debt Service Funds  
(AMOUNTS IN \$000)

	<u>Budget</u>	<u>Actual</u>	<u>% of Budget Realized / Expended</u>
<b>General Fund Revenues</b>			
Property Taxes and P&I	\$ 121,475	\$ 6,913	5.7%
Co-Curricular Activity	320	478	149.3%
Investment Income	2,506	1,607	64.1%
Rents, Fees, Misc.	88	1,126	1283.1%
State Rev. - Foundation Program	104,195	60,516	58.1%
State Revenue - TRS On-Behalf	12,500	6,803	0.0%
State Revenue - Other Programs	0	0	0.0%
Federal Revenue Programs	1,064	108	10.1%
<b>Total General Fund Revenues</b>	<b>\$ 242,148</b>	<b>\$ 77,551</b>	<b>32.0%</b>
<b>General Fund Expenditures by Function</b>			
11 Instruction	\$ 156,149	\$ 61,386	39.3%
12 Instr. Resource & Media Services	2,642	1,067	40.4%
13 Curriculum Dev./Instr. Staff Development	1,263	404	32.0%
21 Instructional Leadership	5,991	1,990	33.2%
23 School Leadership	12,494	5,234	41.9%
31 Guidance & Counseling Services	7,748	3,286	42.4%
32 Social Work Services	107	37	34.9%
33 Health Services	2,858	1,132	39.6%
34 Pupil Transportation	10,545	4,011	38.0%
36 Co-curr./Extracurr. Activities	5,164	1,854	35.9%
41 General Administration	7,664	3,327	43.4%
51 Plant Maintenance & Operations	22,878	9,652	42.2%
52 Security & Monitoring	3,153	1,470	46.6%
53 Data Processing Services	3,888	1,828	47.0%
61 Community Services	1	0	0.0%
71 Leases	377	114	30.1%
81 Fac. Acquisition & Construction	0	0	0.0%
95 Juvenile Justice Alt. Ed. Program	14	0	0.0%
99 Other Intergovernmental	1,520	678	44.6%
<b>Total General Fund Expenditures</b>	<b>\$ 244,456</b>	<b>\$ 97,470</b>	<b>39.9%</b>

**Budget Targets:**

**This chart represents the percentage actually expended of the appropriations approved by the Board by Function.**



TOMBALL INDEPENDENT SCHOOL DISTRICT  
 FINANCIAL COMPARISON REPORT  
 As of November 30, 2025  
 General Fund, Food Service, and Debt Service Funds  
 (AMOUNTS IN \$000)

	<u>Budget</u>	<u>Actual</u>	<u>% of Budget Realized / Expended</u>
<b><u>Food Service Fund Revenues</u></b>			
Food Sales	\$ 6,842	\$ 2,400	35.1%
State Revenue - TRS On-Behalf	530	169	31.8%
Federal/State Reimbursement	<u>5,455</u>	<u>1,490</u>	27.3%
Total Food Service Fund Revenues	<u>\$ 12,827</u>	<u>\$ 4,059</u>	31.6%
<b><u>Food Service Fund Expenditures</u></b>	<u>\$ 12,904</u>	<u>\$ 3,874</u>	30.0%

	<u>Budget</u>	<u>Actual</u>	<u>% of Budget Realized / Expended</u>
<b><u>Debt Service Fund Revenues</u></b>			
Property Taxes and P&I	\$ 70,695	\$ 4,065	5.8%
Investment Income	805	288	35.7%
State Rev.-Foundation Allocation	6,000	0	0.0%
Sale of Bonds	<u>0</u>	<u>1,676</u>	0.0%
Total Debt Service Fund Revenues	<u>\$ 77,500</u>	<u>\$ 6,029</u>	7.8%
<b><u>Debt Service Fund Expenditures</u></b>	<u>\$ 77,500</u>	<u>\$ 20,938</u>	27.0%

**\*\*Review additional tabs (worksheets) for reconciliations of amendments to adopted revenue and expenditure appropriations.**







