

B. 2024-25 Sample of Individual Campus Rating Summary with
Distinction Designations (Bryan Adams)

Texas Education Agency
2025 Accountability Rating Overall Summary
 BRYAN ADAMS H S LEADERSHIP ACADEMY (057905001) - DALLAS ISD - DALLAS COUNTY

	Component Score	Scaled Score	Rating	Proportion of Overall Rating
Overall		85	B	
Student Achievement		80	B	0%
STAAR Performance	43	72		
College, Career and Military Readiness	96	97		
Graduation Rate	88.5	60		
School Progress		88	B	70%
Academic Growth	66	67	D	
Relative Performance (Eco Dis: 92.6%)		88	B	✓
Closing the Gaps	58	77	C	30%

Identification of Schools for Improvement

This campus is not identified for comprehensive support and improvement, targeted support and improvement, or additional targeted support.

Distinction Designations

Academic Achievement in Reading/Language Arts	Earned
Academic Achievement in Mathematics	Not Earned
Academic Achievement in Science	Earned
Academic Achievement in Social Studies	Earned
Top 25%: Comparative Academic Growth	Not Earned
Postsecondary Readiness	Earned
Top 25%: Comparative Closing the Gaps	Not Earned

Texas Education Agency
2025 STAAR Performance
 BRYAN ADAMS H S LEADERSHIP ACADEMY (057905001) - DALLAS ISD - DALLAS COUNTY

Calculation Report

STAAR Performance	Reading/Language Arts (RLA)	Mathematics	Science	Social Studies	Totals	Percentages
Total Tests	1,351	416	623	548	2,938	
Approaches GL or Above	889	269	530	520	2,208	75%
Meets GL or Above	586	86	260	344	1,276	43%
Masters GL	90	21	49	158	318	11%
Total Percentage Points						129%
Component Score						43

Texas Education Agency
2025 STAAR Performance
 BRYAN ADAMS H S LEADERSHIP ACADEMY (057905001) - DALLAS ISD - DALLAS COUNTY

Data Table: Accountability Groups

Accountability Groups									
	All Students	African American	Hispanic	White	American Indian	Asian	Pacific Islander	Two or More Races	High Focus ^
All Subjects									
Percent of Tests									
At Approaches GL Standard or Above	75%	68%	76%	79%	60%	66%	-	88%	74%
At Meets GL Standard or Above	43%	33%	44%	64%	20%	38%	-	45%	42%
At Masters GL Standard	11%	8%	10%	34%	0%	6%	-	19%	10%
Number of Tests									
At Approaches GL Standard or Above	2,208	200	1,859	88	3	21	-	37	2,105
At Meets GL Standard or Above	1,276	97	1,075	72	1	12	-	19	1,195
At Masters GL Standard	318	22	248	38	0	2	-	8	280
Total Tests	2,938	293	2,454	112	5	32	-	42	2,830
Reading/Language Arts (RLA)									
Percent of Tests									
At Approaches GL Standard or Above	66%	60%	66%	72%	*	38%	-	80%	65%
At Meets GL Standard or Above	43%	32%	44%	65%	*	25%	-	50%	42%
At Masters GL Standard	7%	5%	6%	23%	*	0%	-	15%	6%
Number of Tests									
At Approaches GL Standard or Above	889	78	757	31	*	**	-	16	843
At Meets GL Standard or Above	586	42	501	28	*	**	-	10	547
At Masters GL Standard	90	6	71	10	*	**	-	3	77
Total Tests	1,351	130	1,139	43	*	**	-	20	1,304
Mathematics									
Percent of Tests									
At Approaches GL Standard or Above	65%	43%	67%	55%	*	100%	-	100%	64%
At Meets GL Standard or Above	21%	12%	22%	20%	*	60%	-	0%	21%
At Masters GL Standard	5%	2%	6%	5%	*	0%	-	0%	5%
Number of Tests									
At Approaches GL Standard or Above	269	21	226	11	*	5	-	**	259
At Meets GL Standard or Above	86	6	73	4	*	3	-	**	84
At Masters GL Standard	21	1	19	1	*	0	-	**	21
Total Tests	416	49	336	20	*	5	-	**	402
Science									
Percent of Tests									
At Approaches GL Standard or Above	85%	82%	85%	90%	*	100%	-	92%	85%

Texas Education Agency
2025 STAAR Performance
 BRYAN ADAMS H S LEADERSHIP ACADEMY (057905001) - DALLAS ISD - DALLAS COUNTY

Accountability Groups									
	All Students	African American	Hispanic	White	American Indian	Asian	Pacific Islander	Two or More Races	High Focus ^
At Meets GL Standard or Above	42%	34%	42%	70%	*	20%	-	50%	40%
At Masters GL Standard	8%	6%	7%	35%	*	0%	-	25%	7%
Number of Tests									
At Approaches GL Standard or Above	530	56	439	18	*	**	-	11	510
At Meets GL Standard or Above	260	23	216	14	*	**	-	6	243
At Masters GL Standard	49	4	35	7	*	**	-	3	42
Total Tests	623	68	517	20	*	**	-	12	603
Social Studies									
Percent of Tests									
At Approaches GL Standard or Above	95%	98%	95%	97%	-	83%	-	100%	95%
At Meets GL Standard or Above	63%	57%	62%	90%	-	67%	-	60%	62%
At Masters GL Standard	29%	24%	27%	69%	-	33%	-	40%	27%
Number of Tests									
At Approaches GL Standard or Above	520	45	437	28	-	5	-	5	493
At Meets GL Standard or Above	344	26	285	26	-	4	-	3	321
At Masters GL Standard	158	11	123	20	-	2	-	2	140
Total Tests	548	46	462	29	-	6	-	5	521

Texas Education Agency
2025 STAAR Performance
 BRYAN ADAMS H S LEADERSHIP ACADEMY (057905001) - DALLAS ISD - DALLAS COUNTY

Data Table: Additional Student Groups

Additional Student Groups														
	All Students	Econ Disadv	Non-Econ Disadv	G/T	EB/EL (Current)	EB/EL (Current & Monitored)	Special Ed (Current)	Special Ed (Former)	Continuously Enrolled	Non-Continuously Enrolled	Highly Mobile *	Foster	Homeless	Migrant
All Subjects														
Percent of Tests														
At Approaches GL Standard or Above	75%	74%	87%	96%	70%	73%	49%	80%	76%	72%	61%	92%	54%	-
At Meets GL Standard or Above	43%	42%	61%	78%	35%	39%	24%	35%	46%	38%	29%	42%	26%	-
At Masters GL Standard	11%	10%	23%	27%	6%	8%	9%	0%	11%	9%	9%	17%	7%	-
Number of Tests														
At Approaches GL Standard or Above	2,208	2,030	178	413	1,140	1,283	173	39	1,566	642	42	11	31	-
At Meets GL Standard or Above	1,276	1,151	125	337	572	691	85	17	942	334	20	5	15	-
At Masters GL Standard	318	270	48	118	91	137	32	0	234	84	6	2	4	-
Total Tests	2,938	2,733	205	432	1,623	1,768	352	49	2,050	888	69	12	57	-
Reading/Language Arts (RLA)														
Percent of Tests														
At Approaches GL Standard or Above	66%	65%	84%	97%	59%	62%	35%	63%	69%	59%	32%	*	25%	-
At Meets GL Standard or Above	43%	42%	63%	87%	33%	37%	23%	32%	47%	36%	21%	*	13%	-
At Masters GL Standard	7%	6%	17%	25%	3%	4%	8%	0%	7%	6%	0%	*	0%	-
Number of Tests														
At Approaches GL Standard or Above	889	817	72	189	462	512	64	12	647	242	9	*	6	-
At Meets GL Standard or Above	586	532	54	170	260	306	42	6	440	146	6	*	3	-
At Masters GL Standard	90	75	15	48	23	35	14	0	67	23	0	*	0	-
Total Tests	1,351	1,265	86	195	779	830	183	19	942	409	28	*	24	-
Mathematics														
Percent of Tests														
At Approaches GL Standard or Above	65%	64%	74%	83%	62%	66%	55%	90%	61%	72%	80%	*	75%	-
At Meets GL Standard or Above	21%	20%	24%	35%	20%	22%	20%	30%	18%	25%	10%	*	13%	-
At Masters GL Standard	5%	5%	5%	7%	6%	5%	13%	0%	4%	7%	0%	*	0%	-
Number of Tests														
At Approaches GL Standard or Above	269	241	28	50	133	158	31	9	167	102	8	*	6	-
At Meets GL Standard or Above	86	77	9	21	43	52	11	3	50	36	1	*	1	-
At Masters GL Standard	21	19	2	4	12	12	7	0	11	10	0	*	0	-
Total Tests	416	378	38	60	213	239	56	10	274	142	10	*	8	-
Science														
Percent of Tests														
At Approaches GL Standard or Above	85%	85%	93%	97%	82%	83%	68%	78%	86%	83%	77%	*	70%	-

Texas Education Agency
2025 STAAR Performance
 BRYAN ADAMS H S LEADERSHIP ACADEMY (057905001) - DALLAS ISD - DALLAS COUNTY

Additional Student Groups														
	All Students	Econ Disadv	Non-Econ Disadv	G/T	EB/EL (Current)	EB/EL (Current & Monitored)	Special Ed (Current)	Special Ed (Former)	Continuously Enrolled	Non-Continuously Enrolled	Highly Mobile *	Foster	Homeless	Migrant
At Meets GL Standard or Above	42%	40%	73%	74%	36%	39%	26%	33%	44%	38%	15%	*	20%	-
At Masters GL Standard	8%	7%	22%	18%	4%	5%	12%	0%	7%	9%	0%	*	0%	-
Number of Tests														
At Approaches GL Standard or Above	530	492	38	92	295	311	53	7	369	161	10	*	7	-
At Meets GL Standard or Above	260	230	30	70	129	144	20	3	187	73	2	*	2	-
At Masters GL Standard	49	40	9	17	14	17	9	0	31	18	0	*	0	-
Total Tests	623	582	41	95	358	374	78	9	429	194	13	*	10	-
Social Studies														
Percent of Tests														
At Approaches GL Standard or Above	95%	94%	100%	100%	92%	93%	71%	100%	95%	96%	83%	*	80%	-
At Meets GL Standard or Above	63%	61%	80%	93%	51%	58%	34%	45%	65%	55%	61%	*	60%	-
At Masters GL Standard	29%	27%	55%	60%	15%	22%	6%	0%	31%	23%	33%	*	27%	-
Number of Tests														
At Approaches GL Standard or Above	520	480	40	82	250	302	25	11	383	137	15	*	12	-
At Meets GL Standard or Above	344	312	32	76	140	189	12	5	265	79	11	*	9	-
At Masters GL Standard	158	136	22	49	42	73	2	0	125	33	6	*	4	-
Total Tests	548	508	40	82	273	325	35	11	405	143	18	*	15	-

- Indicates there are no students in the group.

* Indicates results are masked due to small numbers to protect student confidentiality.

** When only one racial/ethnic group is masked, then the second smallest racial/ethnic group is masked regardless of size.

^ This is a new accountability group introduced in 2023; it includes students who are Econ Disadv, EB/EL (Current & Monitored), Special Ed (Current), or Highly Mobile.

★ This is an additional student group introduced in 2023; it includes students who are Foster, Homeless, or Migrant.

Calculation Report

	2024 Annual Graduates	
	Count Credit	Component Score
Total		
Total graduates	503	
Total credit for CCMR criteria	481	96%

Data Table

	2024 Annual Graduates	
	Count Credit	Percentage
College		
Texas Success Initiative (TSI) Criteria		
Met TSI criteria in both RLA and Mathematics	207	41.2%
Met TSI criteria in both RLA and Mathematics, excluding college prep courses	116	23.1%
TSI Criteria - Reading/Language Arts (RLA)		
Met TSI criteria for at least one indicator in RLA	304	60.4%
Met TSI criteria in RLA, excluding college prep courses	232	46.1%
Met TSI assessment criteria	113	22.5%
Met ACT criteria	3	0.6%
Met SAT criteria	172	34.2%
Earned credit for a college prep course	82	16.3%
TSI Criteria - Mathematics		
Met TSI criteria for at least one indicator in Mathematics	236	46.9%
Met TSI criteria in Mathematics, excluding college prep courses	135	26.8%
Met TSI assessment criteria	103	20.5%
Met ACT criteria	2	0.4%
Met SAT criteria	61	12.1%
Earned credit for a college prep course	129	25.6%
AP/IB Examination		
Met criterion score on an AP/IB exam in any subject	119	23.7%
Dual Course Credits		
Earned credit for at least 3 hours in RLA or Mathematics or 9 hours in any subject	116	23.1%
Associate Degree		
Earned an associate degree by August 31 immediately following high school graduation	36	7.2%
OnRamps Dual Enrollment Course		
Completed an OnRamps course and qualified for at least 3 hours of university or college credit in any subject	24	4.8%
Special Ed with Advanced Diploma Plan		
Received special education services and earned an advanced diploma	32	6.4%
Career		
Industry-Based Certifications (IBC)		
Earned an IBC and received credit for an aligned level two or higher course	276	54.9%
Earned at least one sunseting IBC and did not meet any other CCMR criteria	6	1.2%
Earned only a sunseting IBC and are not included due to IBC cap*	0	0.0%
Level I or Level II Certificate		
Earned a level I or level II certificate in any workforce education area	28	5.6%
Graduate with Completed IEP and Workforce Readiness		

Texas Education Agency
2025 College, Career, and Military Readiness
 BRYAN ADAMS H S LEADERSHIP ACADEMY (057905001) - DALLAS ISD - DALLAS COUNTY

	2024 Annual Graduates	
	Count Credit	Percentage
Received graduation type code of 04, 05, 54, or 55	1	0.2%
Military		
U.S. Armed Forces		
Enlisted in the U.S. Armed Forces	0	0.0%

* Beginning with 2023 ratings, a campus may not earn CCMR credit for more than five graduates, or 20 percent of graduates, whichever is higher, who only meet CCMR criteria via a sunseting IBC.

Texas Education Agency
2025 Graduation Rate
 BRYAN ADAMS H S LEADERSHIP ACADEMY (057905001) - DALLAS ISD - DALLAS COUNTY

Calculation Report

Graduation Rate	All Students
Class of 2024, 4-year	88.5
Class of 2023, 5-year	87.6
Class of 2022, 6-year	88.4
Annual Dropout*	
Component Score	88.5

* Used only if 4-, 5-, or 6-year value is not available.

Data Table

	Accountability Groups									Additional Student Groups								
	All Students	African American	Hispanic	White	American Indian	Asian	Pacific Islander	Two or More Races	High Focus^	Econ Disadv	Non-Econ Disadv	G/T	EB/EL (Current & Monitored)+	Special Ed (Current)	Highly Mobile+	Foster	Homeless	Migrant
4-Year Graduation Rate (Gr 9-12): Class of 2024																		
% Graduated	88.5%	86.5%	88.7%	82.8%	*	100.0%	-	100.0%	88.3%	88.8%	86.4%	98.9%	88.2%	73.7%	90.0%	-	90.0%	-
# Graduated	462	45	378	24	*	7	-	**	424	411	51	91	247	28	9	-	9	-
Total in Class	522	52	426	29	*	7	-	**	480	463	59	92	280	38	10	-	10	-
5-Year Extended Graduation Rate (Gr 9-12): Class of 2023																		
% Graduated	87.6%	88.6%	87.4%	90.3%	-	66.7%	-	100.0%	87.0%	87.5%	89.4%	96.0%	83.1%	77.8%	53.8%	-	53.8%	-
# Graduated	440	39	361	28	-	4	-	8	414	398	42	72	251	28	7	-	7	-
Total in Class	502	44	413	31	-	6	-	8	476	455	47	75	302	36	13	-	13	-
6-Year Extended Graduation Rate (Gr 9-12): Class of 2022																		
% Graduated	88.4%	84.0%	89.7%	77.8%	*	90.0%	-	*	87.5%	87.6%	94.9%	95.6%	88.1%	71.4%	82.4%	*	76.9%	-
# Graduated	459	42	383	21	*	9	-	*	421	403	56	65	229	25	14	*	10	-
Total in Class	519	50	427	27	*	10	-	*	481	460	59	68	260	35	17	*	13	-
Annual Dropout Rate (Gr 9-12): SY 2023-24																		
% Dropped Out	2.1%	1.1%	2.1%	4.6%	6.7%	0.0%	-	0.0%	2.2%	2.1%	1.7%	0.0%	2.6%	2.2%	6.8%	12.5%	7.5%	-
% Dropped Out - Conversion	79.0%																	
# Dropped Out	52	3	42	6	1	0	-	0	52	48	4	0	36	5	4	1	4	-
# of Students	2,488	264	2,028	130	15	26	-	25	2,336	2,254	234	391	1,408	229	59	8	53	-

Texas Education Agency
2025 Graduation Rate
BRYAN ADAMS H S LEADERSHIP ACADEMY (057905001) - DALLAS ISD - DALLAS COUNTY

- + Ever HS EB/ELs are included in the graduation rate. Annual Dropouts are current EB/ELs only.
- Indicates there are no students in the group.
- * Indicates results are masked due to small numbers to protect student confidentiality.
- ** When only one racial/ethnic group is masked, then the second smallest racial/ethnic group is masked regardless of size.
- ^ This is a new accountability group introduced in 2023; it includes students who are Econ Disadv, EB/EL (Current & Monitored), Special Ed (Current), or Highly Mobile.
- ★ This is an additional student group introduced in 2023; it includes students who are Foster, Homeless, or Migrant.

Calculation Report

School Progress: Academic Growth RLA and Math			
	Count	Points	Calculated
Annual Growth Points Earned	700.5	1	700.50
Accelerated Learning Points Earned	98	0.25	24.50
Sum of Annual Growth plus Accelerated Learning Points			725.00
Total Tests Evaluated			1,094
Academic Growth Score			66

Annual Growth RLA and Math			
	Count	Points	Calculated
Tests Earning 0 Points	347	0	0
Tests Earning 0.5 Points	93	0.5	46.5
Tests Earning 1 Point	654	1	654
Annual Growth Points Earned			700.5
Total Tests Evaluated			1,094
Annual Growth Score			64

Accelerated Learning RLA and Math			
	Count	Points	Calculated
Tests Earning 0 Points	210	0	0
Tests Earning 1 Point	98	1	98
Accelerated Learning Points Earned			98
Total Tests Evaluated			308
Accelerated Learning Score			32

Texas Education Agency
2025 Academic Growth
 BRYAN ADAMS H S LEADERSHIP ACADEMY (057905001) - DALLAS ISD - DALLAS COUNTY

Both Subjects

0 Points 0.5 Points 1 Point

Annual Growth														
2024-25 Performance on STAAR														
	Low Did Not Meet Grade Level		High Did Not Meet Grade Level		Low Approaches Grade Level		High Approaches Grade Level		Meets Grade Level		Masters Grade Level		Total	
2023-24 Performance on STAAR	Count	Points	Count	Points	Count	Points	Count	Points	Count	Points	Count	Points	Count	Points
Low Did Not Meet Grade Level	73	0.0	54	54.0	10	10.0	5	5.0	3	3.0	0	0.0	145	72.0
High Did Not Meet Grade Level	35	0.0	48	24.0	30	30.0	23	23.0	24	24.0	3	3.0	163	104.0
Low Approaches Grade Level	11	0.0	25	0.0	24	12.0	27	27.0	31	31.0	1	1.0	119	71.0
High Approaches Grade Level	1	0.0	16	0.0	23	0.0	21	10.5	60	60.0	0	0.0	121	70.5
Meets Grade Level	4	0.0	4	0.0	21	0.0	38	0.0	283	283.0	25	25.0	375	308.0
Masters Grade Level	0	0.0	0	0.0	0	0.0	1	0.0	95	0.0	75	75.0	171	75.0
Total	124	0.0	147	78.0	108	52.0	115	65.5	496	401.0	104	104.0	1,094	700.5

Accelerated Learning						
2024-25 Performance on STAAR						
	Did Not Meet Grade Level	Approaches Grade Level	Meets Grade Level	Masters Grade Level	Total	
2023-24 Performance on STAAR	Count	Count	Count	Count	Count	Points
Did Not Meet Grade Level	210	68	27	3	308	98

Reading/Language Arts (RLA)

0 Points 0.5 Points 1 Point

Annual Growth														
2024-25 Performance on STAAR														
	Low Did Not Meet Grade Level		High Did Not Meet Grade Level		Low Approaches Grade Level		High Approaches Grade Level		Meets Grade Level		Masters Grade Level		Total	
2023-24 Performance on STAAR	Count	Points	Count	Points	Count	Points	Count	Points	Count	Points	Count	Points	Count	Points
Low Did Not Meet Grade Level	68	0.0	49	49.0	6	6.0	5	5.0	3	3.0	0	0.0	131	63.0
High Did Not Meet Grade Level	29	0.0	42	21.0	19	19.0	16	16.0	17	17.0	1	1.0	124	74.0
Low Approaches Grade Level	11	0.0	21	0.0	21	10.5	21	21.0	21	21.0	0	0.0	95	52.5
High Approaches Grade Level	1	0.0	15	0.0	14	0.0	16	8.0	56	56.0	0	0.0	102	64.0
Meets Grade Level	4	0.0	2	0.0	18	0.0	30	0.0	275	275.0	19	19.0	348	294.0
Masters Grade Level	0	0.0	0	0.0	0	0.0	1	0.0	92	0.0	67	67.0	160	67.0
Total	113	0.0	129	70.0	78	35.5	89	50.0	464	372.0	87	87.0	960	614.5

Accelerated Learning						
2024-25 Performance on STAAR						
	Did Not Meet Grade Level	Approaches Grade Level	Meets Grade Level	Masters Grade Level	Total	
2023-24 Performance on STAAR	Count	Count	Count	Count	Count	Points
Did Not Meet Grade Level	188	46	20	1	255	67

Mathematics

0 Points 0.5 Points 1 Point

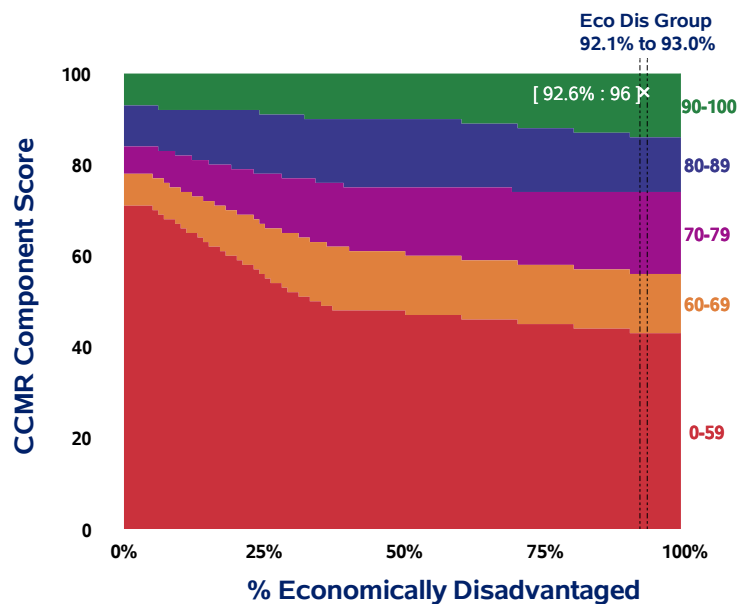
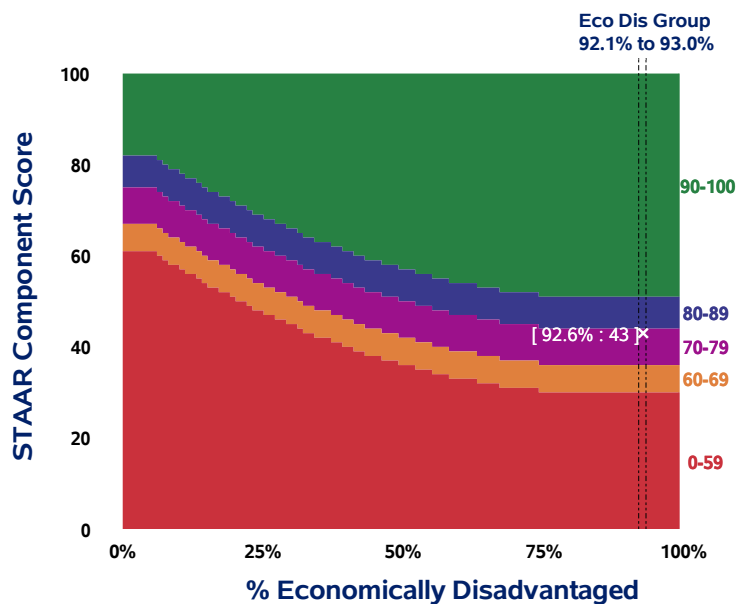
Annual Growth														
2024-25 Performance on STAAR														
	Low Did Not Meet Grade Level		High Did Not Meet Grade Level		Low Approaches Grade Level		High Approaches Grade Level		Meets Grade Level		Masters Grade Level		Total	
2023-24 Performance on STAAR	Count	Points	Count	Points	Count	Points	Count	Points	Count	Points	Count	Points	Count	Points
Low Did Not Meet Grade Level	5	0.0	5	5.0	4	4.0	0	0.0	0	0.0	0	0.0	14	9.0
High Did Not Meet Grade Level	6	0.0	6	3.0	11	11.0	7	7.0	7	7.0	2	2.0	39	30.0
Low Approaches Grade Level	0	0.0	4	0.0	3	1.5	6	6.0	10	10.0	1	1.0	24	18.5
High Approaches Grade Level	0	0.0	1	0.0	9	0.0	5	2.5	4	4.0	0	0.0	19	6.5
Meets Grade Level	0	0.0	2	0.0	3	0.0	8	0.0	8	8.0	6	6.0	27	14.0
Masters Grade Level	0	0.0	0	0.0	0	0.0	0	0.0	3	0.0	8	8.0	11	8.0
Total	11	0.0	18	8.0	30	16.5	26	15.5	32	29.0	17	17.0	134	86.0

Accelerated Learning						
2024-25 Performance on STAAR						
	Did Not Meet Grade Level	Approaches Grade Level	Meets Grade Level	Masters Grade Level	Total	
2023-24 Performance on STAAR	Count	Count	Count	Count	Count	Points
Did Not Meet Grade Level	22	22	7	2	53	31

Texas Education Agency
2025 Relative Performance
 BRYAN ADAMS H S LEADERSHIP ACADEMY (057905001) - DALLAS ISD - DALLAS COUNTY

Calculation Report

Component	% Economically Disadvantaged	Component Score	Scaled Score
STAAR Performance	92.6%	43	78
College, Career, and Military Readiness		96	97
Relative Performance			88



Economically Disadvantaged	High School/K-12 STAAR Scaled Score				
	30 to 59	60 to 69	✓ 70 to 79	80 to 89	90 to 100
90.1% to 91.0%	0	31	37	45	52
91.1% to 92.0%	0	31	37	45	52
92.1% to 93.0%	0	31	37	45	52
93.1% to 94.0%	0	31	37	45	52
94.1% to 95.0%	0	31	37	45	52

Economically Disadvantaged	High School/K-12 CCMR Scaled Score				
	30 to 59	60 to 69	70 to 79	80 to 89	✓ 90 to 100
90.1% to 91.0%	0	44	57	75	87
91.1% to 92.0%	0	44	57	75	87
92.1% to 93.0%	0	44	57	75	87
93.1% to 94.0%	0	44	57	75	87
94.1% to 95.0%	0	44	57	75	87

Texas Education Agency
2025 Closing the Gaps
 BRYAN ADAMS H S LEADERSHIP ACADEMY (057905001) - DALLAS ISD - DALLAS COUNTY

Calculation Report

Component	Total Earned Points	Total Possible Points	Component Points	Weight	Total Points
Academic Achievement	9	32	28.1	50.0%	14.1
Graduation Status	6	16	37.5	10.0%	3.8
ELP Status	4	4	100.0	10.0%	10.0
School Quality Status	16	16	100.0	30.0%	30.0
Closing the Gaps Score					58

Texas Education Agency
2025 Closing the Gaps
 BRYAN ADAMS H S LEADERSHIP ACADEMY (057905001) - DALLAS ISD - DALLAS COUNTY

Data Table: Accountability Groups

Accountability Groups											
	All Students	African American	Hispanic	White	American Indian	Asian	Pacific Islander	Two or More Races	High Focus^	Total Earned Points	Total Possible Points
<i>Groups to be evaluated in 2026 accountability</i>	△	△	△						△		
Groups evaluated in 2025 accountability	✓	✓	✓						✓		
Academic Achievement Status											
Reading/Language Arts (RLA) 2025 Target	44%	32%	36%	62%	43%	74%	45%	58%	32%		
RLA Next Interim Target (2027-28 through 2031-32)	53%	43%	47%	68%	53%	78%	54%	65%	43%		
RLA Long Term Target (2037-38)	72%	66%	68%	81%	72%	87%	73%	79%	66%		
Points Earned	0	3	3						3		
2025 % at Meets GL Standard or Above	43%	32%	44%	65%	*	25%	-	50%	42%		
2025 # at Meets GL Standard or Above	586	42	501	28	*	**	-	10	547		
2025 Total Tests (Adjusted)	1,351	130	1,139	43	*	**	-	20	1,304		
2024 % at Meets GL Standard or Above	50%	43%	50%	62%	--	40%	-	63%	48%		
Mathematics 2025 Target	38%	26%	35%	48%	37%	72%	41%	44%	31%		
Mathematics Next Interim Target (2027-28 through 2031-32)	48%	38%	46%	57%	48%	77%	51%	53%	43%		
Mathematics Long Term Target (2037-38)	69%	63%	68%	74%	69%	86%	71%	72%	66%		
Points Earned	0	0	0						0		
2025 % at Meets GL Standard or Above	21%	12%	22%	20%	*	60%	-	0%	21%		
2025 # at Meets GL Standard or Above	86	6	73	4	*	**	-	0	84		
2025 Total Tests (Adjusted)	416	49	336	20	*	**	-	6	402		
2024 % at Meets GL Standard or Above	31%	16%	33%	38%	--	--	-	33%	31%		
Total Points										9	32
Academic Growth Status											
RLA 2025 Target	69%	65%	66%	72%	68%	81%	70%	72%	64%		
RLA Next Interim Target (2027-28 through 2031-32)	78%	75%	76%	80%	77%	85%	78%	80%	74%		
RLA Long Term Target (2037-38)	95%	95%	95%	95%	95%	95%	95%	95%	94%		
Points Earned	0	0	3						3		
2025 Academic Growth Score	66%	60%	66%	74%	*	43%	-	67%	66%		
2025 Growth Points	631.25	51.25	542.25	23.00	*	**	-	10.75	602.50		
2025 Total Tests	960	86	819	31	*	**	-	16	919		
2024 Academic Growth Score	72%	69%	72%	70%	--	--	-	94%	71%		
Mathematics 2025 Target	76%	74%	77%	73%	74%	87%	72%	73%	75%		
Mathematics Next Interim Target (2027-28 through 2031-32)	82%	81%	83%	80%	81%	90%	80%	80%	82%		
Mathematics Long Term Target (2037-38)	95%	95%	95%	95%	95%	95%	95%	95%	95%		

Texas Education Agency
2025 Closing the Gaps
 BRYAN ADAMS H S LEADERSHIP ACADEMY (057905001) - DALLAS ISD - DALLAS COUNTY

Accountability Groups											
	All Students	African American	Hispanic	White	American Indian	Asian	Pacific Islander	Two or More Races	High Focus^	Total Earned Points	Total Possible Points
Points Earned	0	0	2						0		
2025 Academic Growth Score	70%	39%	75%	*	-	*	-	*	70%		
2025 Growth Points	93.75	7.75	81.50	*	-	*	-	*	91.00		
2025 Total Tests	134	20	109	*	-	*	-	*	130		
2024 Academic Growth Score	70%	80%	68%	--	--	--	-	--	70%		
Total Points										8	32
Federal Graduation Rate Status											
2025 Target	90.0%	86.3%	88.1%	93.8%	87.4%	96.7%	88.3%	90.8%	86.5%		
Next Interim Target (2027-28 through 2031-32)	92.7%	90.2%	91.4%	95.2%	90.9%	97.1%	91.5%	93.2%	90.3%		
Long Term Target (2037-38)	98.0%	98.0%	98.0%	98.0%	98.0%	98.0%	98.0%	98.0%	98.0%		
Points Earned	1	1	1						3		
2024 % Graduated	86.8%	84.7%	87.0%	80.6%	*	100.0%	-	100.0%	86.6%		
2024 # Graduated	472	50	381	25	*	8	-	**	434		
2024 Total in Class	544	59	438	31	*	8	-	**	501		
2023 % Graduated	85.6%	83.0%	85.7%	90.3%	-	--	-	--	84.8%		
Total Points										6	16
Progress in Achieving English Language Proficiency (EB/EL Current)											
2025 Target									34%		
Next Interim Target (2027-28 through 2031-32)									36%		
Long Term Target (2037-38)									40%		
Points Earned									4		
2025 TELPAS Progress Rate									52%		
2025 TELPAS Progress									531		
2025 TELPAS Total									1,016		
2024 TELPAS Progress Rate									52%		
Total Points										4	4
Student Success (Student Achievement Domain Score (STAAR Component Only))											
2025 Target	47	36	42	58	45	74	47	56	39		
Next Interim Target (2027-28 through 2031-32)	57	46	52	68	55	81	57	66	49		
Long Term Target (2037-38)	77	66	72	88	75	95	77	86	69		
Points Earned	0	3	3						3		
2025 STAAR Component Score	43	36	43	59	27	37	-	51	42		
2025 % at Approaches GL Standard or Above	75%	68%	76%	79%	60%	66%	-	88%	74%		
2025 % at Meets GL Standard or Above	43%	33%	44%	64%	20%	38%	-	45%	42%		
2025 % at Masters GL Standard	11%	8%	10%	34%	0%	6%	-	19%	10%		
2025 Total Tests	2,938	293	2,454	112	5	32	-	42	2,830		

Texas Education Agency
2025 Closing the Gaps
 BRYAN ADAMS H S LEADERSHIP ACADEMY (057905001) - DALLAS ISD - DALLAS COUNTY

Accountability Groups											
	All Students	African American	Hispanic	White	American Indian	Asian	Pacific Islander	Two or More Races	High Focus^	Total Earned Points	Total Possible Points
2024 STAAR Component Score	46	40	47	58	--	48	-	50	45		
Total Points										9	16
School Quality (College, Career, and Military Readiness Performance)											
2025 Target	63%	47%	60%	71%	58%	84%	51%	63%	56%		
Next Interim Target (2027-28 through 2031-32)	73%	57%	70%	79%	68%	88%	61%	73%	66%		
Long Term Target (2037-38)	93%	77%	90%	95%	88%	95%	81%	93%	86%		
Points Earned	4	4	4						4		
2024 % Students Meeting CCMR	93%	88%	93%	96%	*	100%	-	100%	93%		
2024 # Students Meeting CCMR	483	53	387	26	*	9	-	**	442		
2024 Total Students	518	60	414	27	*	9	-	**	476		
2023 % Students Meeting CCMR	91%	82%	92%	90%	-	--	-	--	91%		
Total Points										16	16
Participation 2024-25											
Target	95%	95%	95%	95%	95%	95%	95%	95%	95%		
RLA											
% Participation	98%	97%	98%	96%	*	100%	-	100%	98%		
# Participants	1,850	144	1,607	53	*	**	-	22	1,799		
Total Students	1,896	148	1,647	55	*	**	-	22	1,844		
Mathematics											
% Participation	98%	95%	98%	100%	*	100%	-	86%	97%		
# Participants	481	54	391	22	*	7	-	**	465		
Total Students	493	57	399	22	*	7	-	**	477		

Data Table: Additional Groups

Additional Groups														
	All Students	Econ Disadv	Non Econ Disadv	G/T	EB/EL (Current)	EB/EL (Current & Monitored)+	Special Ed (Current)	Special Ed (Former)	Continuously Enrolled	Non Continuously Enrolled	Highly Mobile*	Foster	Homeless	Migrant
Academic Achievement Status														
Reading/Language Arts (RLA) 2025 Target	44%	33%	n/a	n/a	n/a	20%	13%	30%	46%	n/a	n/a	n/a	n/a	n/a
RLA Next Interim Target (2027-28 through 2031-32)	53%	44%	n/a	n/a	n/a	33%	28%	42%	55%	n/a	n/a	n/a	n/a	n/a
RLA Long Term Target (2037-38)	72%	67%	n/a	n/a	n/a	60%	57%	65%	73%	n/a	n/a	n/a	n/a	n/a
2025 % at Meets GL Standard or Above	43%	42%	63%	87%	33%	37%	23%	32%	47%	36%	21%	*	13%	-
2025 # at Meets GL Standard or Above	586	532	54	170	260	306	42	6	440	146	6	*	3	-

Texas Education Agency
2025 Closing the Gaps
 BRYAN ADAMS H S LEADERSHIP ACADEMY (057905001) - DALLAS ISD - DALLAS COUNTY

Additional Groups														
	All Students	Econ Disadv	Non Econ Disadv	G/T	EB/EL (Current)	EB/EL (Current & Monitored)+	Special Ed (Current)	Special Ed (Former)	Continuously Enrolled	Non Continuously Enrolled	Highly Mobile*	Foster	Homeless	Migrant
2025 Total Tests (Adjusted)	1,351	1,265	86	195	779	830	183	19	942	409	28	*	24	-
2024 % at Meets GL Standard or Above	50%	48%	74%		44%	44%	22%	30%	54%	41%	18%	--	14%	-
Mathematics 2025 Target	38%	32%	n/a	n/a	n/a	31%	15%	33%	40%	n/a	n/a	n/a	n/a	n/a
Mathematics Next Interim Target (2027-28 through 2031-32)	48%	43%	n/a	n/a	n/a	43%	29%	44%	50%	n/a	n/a	n/a	n/a	n/a
Mathematics Long Term Target (2037-38)	69%	66%	n/a	n/a	n/a	66%	58%	67%	70%	n/a	n/a	n/a	n/a	n/a
2025 % at Meets GL Standard or Above	21%	20%	24%	35%	20%	22%	20%	30%	18%	25%	10%	*	13%	-
2025 # at Meets GL Standard or Above	86	77	9	21	43	52	11	3	50	36	1	*	1	-
2025 Total Tests (Adjusted)	416	378	38	60	213	239	56	10	274	142	10	*	8	-
2024 % at Meets GL Standard or Above	31%	31%	35%		30%	31%	22%	17%	31%	32%	19%	--	21%	-
Academic Growth Status														
RLA 2025 Target	69%	65%	n/a	n/a	n/a	60%	45%	63%	70%	n/a	n/a	n/a	n/a	n/a
RLA Next Interim Target (2027-28 through 2031-32)	78%	75%	n/a	n/a	n/a	70%	55%	73%	78%	n/a	n/a	n/a	n/a	n/a
RLA Long Term Target (2037-38)	95%	95%	n/a	n/a	n/a	90%	75%	93%	95%	n/a	n/a	n/a	n/a	n/a
2025 Academic Growth Score	66%	66%	65%	69%	63%	64%	61%	84%	67%	62%	36%	*	29%	-
2025 Growth Points	631.25	586.25	45.00	129.25	318.00	354.50	61.25	11.75	475.50	155.75	4.00	*	2.00	-
2025 Total Tests	960	891	69	188	504	555	100	14	708	252	11	*	7	-
2024 Academic Growth Score	72%	71%	87%		71%	71%	53%	77%	73%	69%	50%	--	47%	-
Mathematics 2025 Target	76%	75%	n/a	n/a	n/a	77%	64%	73%	77%	n/a	n/a	n/a	n/a	n/a
Mathematics Next Interim Target (2027-28 through 2031-32)	82%	82%	n/a	n/a	n/a	83%	74%	80%	83%	n/a	n/a	n/a	n/a	n/a
Mathematics Long Term Target (2037-38)	95%	95%	n/a	n/a	n/a	95%	94%	95%	95%	n/a	n/a	n/a	n/a	n/a
2025 Academic Growth Score	70%	70%	71%	94%	73%	73%	63%	82%	72%	68%	*	*	*	-
2025 Growth Points	93.75	85.25	8.50	11.25	57.50	57.50	17.00	5.75	52.25	41.50	*	*	*	-
2025 Total Tests	134	122	12	12	79	79	27	7	73	61	*	*	*	-
2024 Academic Growth Score	70%	71%	60%		72%	72%	77%	--	66%	80%	95%	--	--	-
Federal Graduation Rate Status														
2025 Target	90.0%	86.7%	n/a	n/a	n/a	80.0%	79.7%	n/a	n/a	n/a	n/a	n/a	n/a	n/a
Next Interim Target (2027-28 through 2031-32)	92.7%	90.5%	n/a	n/a	n/a	86.0%	85.8%	n/a	n/a	n/a	n/a	n/a	n/a	n/a
Long Term Target (2037-38)	98.0%	98.0%	n/a	n/a	n/a	98.0%	98.0%	n/a	n/a	n/a	n/a	n/a	n/a	n/a
2024 % Graduated	86.8%	87.5%	81.3%	98.9%	87.3%	86.7%	65.1%				90.9%	100.0%	90.9%	-
2024 # Graduated	472	420	52	91	241	255	28				10	5	10	-
2024 Total in Class	544	480	64	92	276	294	43				11	5	11	-

Texas Education Agency
2025 Closing the Gaps
 BRYAN ADAMS H S LEADERSHIP ACADEMY (057905001) - DALLAS ISD - DALLAS COUNTY

Additional Groups														
	All Students	Econ Disadv	Non Econ Disadv	G/T	EB/EL (Current)	EB/EL (Current & Monitored)+	Special Ed (Current)	Special Ed (Former)	Continuously Enrolled	Non Continuously Enrolled	Highly Mobile*	Foster	Homeless	Migrant
2023 % Graduated	85.6%	85.2%	89.6%		82.1%	81.8%	75.0%				53.8%	--	53.8%	-
Progress in Achieving English Language Proficiency (EB/EL Current)														
2025 Target					34%									
Next Interim Target (2027-28 through 2031-32)					36%									
Long Term Target (2037-38)					40%									
2025 TELPAS Progress Rate					52%									
2025 TELPAS Progress					531									
2025 TELPAS Total					1,016									
2024 TELPAS Progress Rate					52%									
Student Success (Student Achievement Domain Score (STAAR Component Only))														
2025 Target	47	38	n/a	n/a	n/a	38	23	43	49	n/a	n/a	n/a	n/a	n/a
Next Interim Target (2027-28 through 2031-32)	57	48	n/a	n/a	n/a	48	33	53	59	n/a	n/a	n/a	n/a	n/a
Long Term Target (2037-38)	77	68	n/a	n/a	n/a	68	53	73	79	n/a	n/a	n/a	n/a	n/a
2025 STAAR Component Score	43	42	57	67	37	40	27	38	44	40	33	50	29	-
2025 % at Approaches GL Standard or Above	75%	74%	87%	96%	70%	73%	49%	80%	76%	72%	61%	92%	54%	-
2025 % at Meets GL Standard or Above	43%	42%	61%	78%	35%	39%	24%	35%	46%	38%	29%	42%	26%	-
2025 % at Masters GL Standard	11%	10%	23%	27%	6%	8%	9%	0%	11%	9%	9%	17%	7%	-
2025 Total Tests	2,938	2,733	205	432	1,623	1,768	352	49	2,050	888	69	12	57	-
2024 STAAR Component Score	46	45	61		44	44	32	31	48	43	31	33	30	-
School Quality (College, Career, and Military Readiness Performance)														
2025 Target	63%	56%	n/a	n/a	n/a	51%	64%	45%	67%	n/a	n/a	n/a	n/a	n/a
Next Interim Target (2027-28 through 2031-32)	73%	66%	n/a	n/a	n/a	61%	74%	55%	76%	n/a	n/a	n/a	n/a	n/a
Long Term Target (2037-38)	93%	86%	n/a	n/a	n/a	81%	94%	75%	95%	n/a	n/a	n/a	n/a	n/a
2024 % Students Meeting CCMR	93%	93%	93%	97%	93%	93%	77%	*	94%	89%	92%	-	92%	-
2024 # Students Meeting CCMR	483	427	56	90	243	261	33	*	393	90	11	-	11	-
2024 Total Students	518	458	60	93	261	281	43	*	417	101	12	-	12	-
2023 % Students Meeting CCMR	91%	91%	94%		91%	92%	72%	--	93%	81%	--	--	--	-
Participation 2024-25														
Target	95%	95%	95%	95%	95%	95%	95%	95%	95%	95%	95%	95%	95%	95%
RLA														
% Participation	98%	98%	98%	98%	98%	98%	96%	100%	98%	97%	97%	100%	97%	-
# Participants	1,850	1,737	113	258	1,252	1,303	223	25	1,266	584	37	5	32	-
Total Students	1,896	1,781	115	262	1,284	1,335	233	25	1,292	604	38	5	33	-

Texas Education Agency
2025 Closing the Gaps
 BRYAN ADAMS H S LEADERSHIP ACADEMY (057905001) - DALLAS ISD - DALLAS COUNTY

Additional Groups														
	All Students	Econ Disadv	Non Econ Disadv	G/T	EB/EL (Current)	EB/EL (Current & Monitored)+	Special Ed (Current)	Special Ed (Former)	Continuously Enrolled	Non Continuously Enrolled	Highly Mobile*	Foster	Homeless	Migrant
Mathematics														
% Participation	98%	98%	98%	97%	97%	98%	95%	100%	98%	97%	100%	*	100%	-
# Participants	481	435	46	61	264	290	62	10	283	198	10	*	8	-
Total Students	493	446	47	63	271	297	65	10	288	205	10	*	8	-

- * Indicates results are masked due to small numbers to protect student confidentiality.
- ** When only one racial/ethnic group is masked, then the second smallest racial/ethnic group is masked regardless of size.
- + Ever HS EB/ELs are included in the Federal Graduation Rate.
- Indicates there are no students in the group.
- ^ This is a new accountability group introduced in 2023; it includes students who are Econ Disadv, EB/EL (Current & Monitored), Special Ed (Current), or Highly Mobile.
- ★ This is an additional student group introduced in 2023; it includes students who are Foster, Homeless, or Migrant.
- Indicates that the student group did not meet minimum size in the prior year.