

# Moving Through Middle School

South Woods Grade 7 → 8



JAN 2026



# What to Know

- 1 8<sup>th</sup> Grade Schedule
- 2 Math and Science options
- 3 Elective options

# Sample 8<sup>th</sup> Grade Schedule

1. English
2. Social Studies
3. Algebra OR Math 8
4. Earth & Space Science OR Science 8
5. Earth & Space Sciences Lab (or other support/elective for Science 8) | PE
6. World Language (continue from Grade 7)
7. Lunch
8. Art | Tech
9. Music (continue from Grade 7) | Research OR CTE



# Math Options

## Algebra 1

HS Regents

- Develop fluency in writing, interpreting, and translating various forms of equations and inequalities.
- Graphing calculator use is integrated throughout the curriculum.
- Culminates in the NYS Algebra 1 Regents Examination.
- Students receive one unit of high school credit upon passing the course and the Algebra 1 Regents Examination.

## Math 8

Middle-Level

- Instruction focuses on:
  - formulating and reasoning about expressions and equations
  - grasping the concept of a function and using functions to describe quantitative relationships
  - analyzing two- and three-dimensional and figures
- Prepares students for future participation in high school level math courses beginning in grade 9.
- The New York State Grade 8 Math Assessment will be administered in the spring.

# Science Options

## Earth and Space Sciences

HS Regents

- Study of the universe, Earth's history, systems, weather, and human sustainability
- Exploration of the forces shaping our planet and environment.
- Emphasis on applying scientific knowledge to real-world challenges.
- Design investigations, analyze results, and share findings.
- Must complete 1200 mins. of labs to be eligible to take the Regents exam.
- Earn 1 HS credit upon passing the course and Earth Science Regents.

## Science 8

Middle-Level

- Spiraled curriculum emphasizes STEM principles.
- Focuses on elements of the living environment and physical setting, such as ecology, astronomy, meteorology, and geology
- Participate in NYS Grade 8 Intermediate Science Assessment.
- The New York State Grade 8 Science Assessment will be administered in the spring.

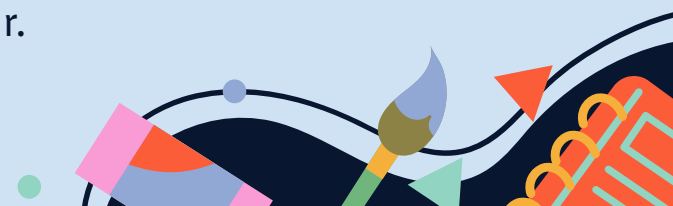
# Elective Options

## 21<sup>st</sup> Century CTE

- CTE = Career and Technical Education
- Students experience project-based learning and real-world applications
- Exploration of themes such as :
  - Career and Community Opportunities
  - Communication and Interpersonal Relationships
  - Financial & Consumer Literacy, Problem-Solving
  - Innovation And Sustainability

## Intro to Research

- Students apply knowledge, interest, creative ideas, critical thinking and research skills to a selected problem and to produce an individual research project.
- The skills and strategies taught will focus on evaluating resources, selecting a topic, investigating, creating, organizing and writing an in-depth research paper.



Course selections are due next week!

**Jan 20th 2026 @ 12 PM**

Your parents received an email with directions for 8th Grade course selection, including a link to

[Middle School Curriculum Guide.](#)



# Questions?

Visit the Guidance Office or email your counselor.

Ms. Goodman

[mgoodman@syossetschools.org](mailto:mgoodman@syossetschools.org)

