

# Rt. 981

# East Base

## PM Routing

To: Mercer Island  
From: NE 135 St/1 Av NE

## EASTBOUND

To: Mercer Island  
From: NE 135 St/1 Av NE

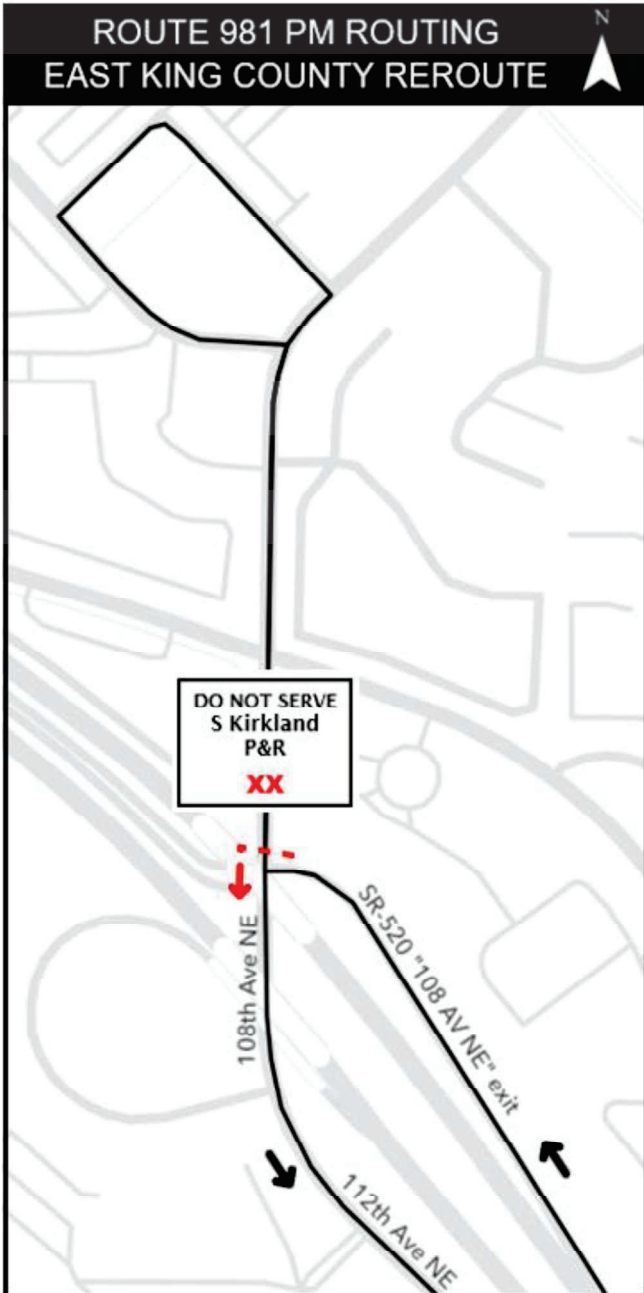
### EAST KING COUNTY REROUTE

Operate regular route

- 2 End of exit "108 Av NE" off WB SR-520
  - L 108 Av NE
  - C Regular route
- S Kirkland P&R closed during snow**

### EAST KING COUNTY REROUTE

Operate regular route



# Rt. 982

# East Base

## EASTBOUND

To: Bear Creek P&R  
From: 25 Av NE/NE 80 St

## WESTBOUND

To: Lakeside School (Haller Lake)  
From: Bear Creek P&R

### NORTH SEATTLE REROUTE

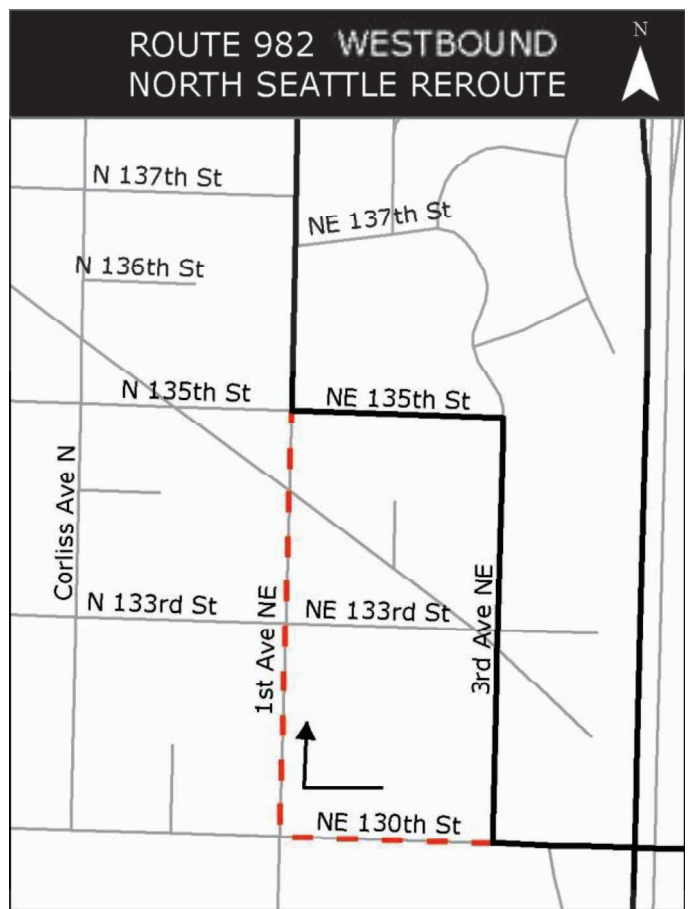
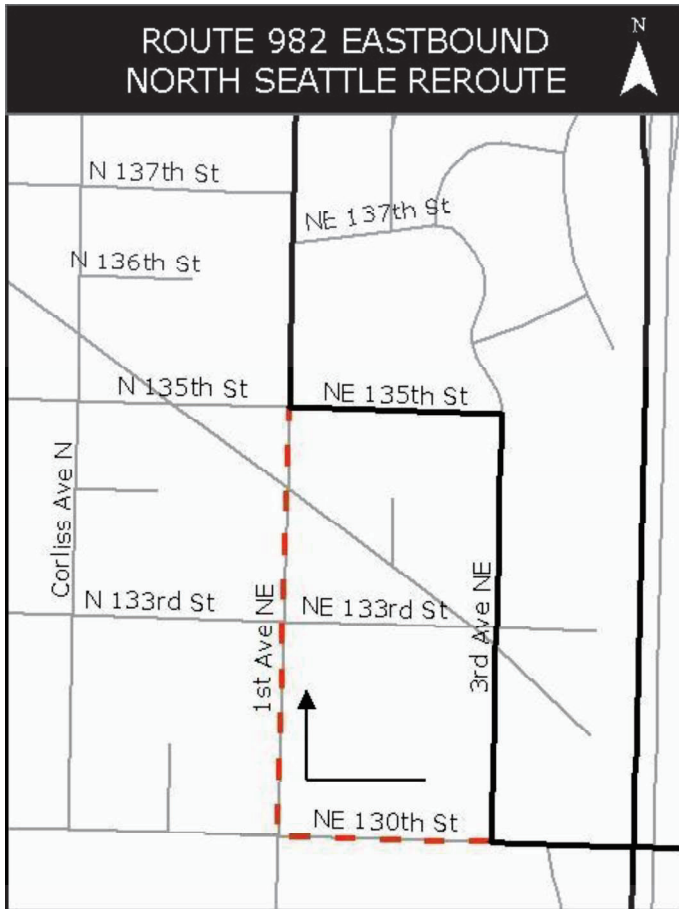
#### Operate regular route

- 2 3 Av NE & NE 130 St
- C NE 130 St
- R 1 Av NE
- 2 Stop fs NE 135 St
- C Regular route

### NORTH SEATTLE REROUTE

#### Operate regular route

- 2 3 Av NE & NE 130 St
- C NE 130 St
- R 1 Av NE
- 2 Stop fs NE 135 St
- C Regular route



**Rt. 986****East Base****EASTBOUND**

To: NE 80 St/120 Av NE  
From: 25 Av NE/NE 80 St

**NORTH SEATTLE REROUTE****Operate regular route**

2 3 Av NE & NE 130 St  
C NE 130 St  
R 1 Av NE  
2 Stop fs NE 135 St  
C Regular route

**EAST KING COUNTY REROUTE**

2 108 Av NE & Northup Wy  
L Northup Way  
R Lake Washington Blvd NE  
2 NE 38 PI

**Transfer customers heading to S Kirkland P&R or stops along 108 Av NE to Rt 255 Shuttle at NE 38 PI**

C Lake Washington Blvd NE  
C Lake St S  
R Kirkland Av  
L 3 St S

**Watch for customers from 255 Shuttle @ Bay 2**

R Central Wy  
C NE 85 St  
C Regular route  
2 NE 85 St & 120 Av NE  
C NE 85 St  
R 124 Av NE  
R NE 80 St  
2 Stop fs 122 Av NE

**WESTBOUND**

To: Lakeside School (Haller Lake)  
From: 120 Av NE/NE 80 St

**EAST KING COUNTY REROUTE****Operate regular route**

2 NE 85 St & 6 St  
C Central Wy  
L 3 St  
2 Kirkland TC Bay 3

**Transfer customers heading to S Kirkland P&R or stops along 108 Av NE to Rt 255 Shuttle @ Bay 3**

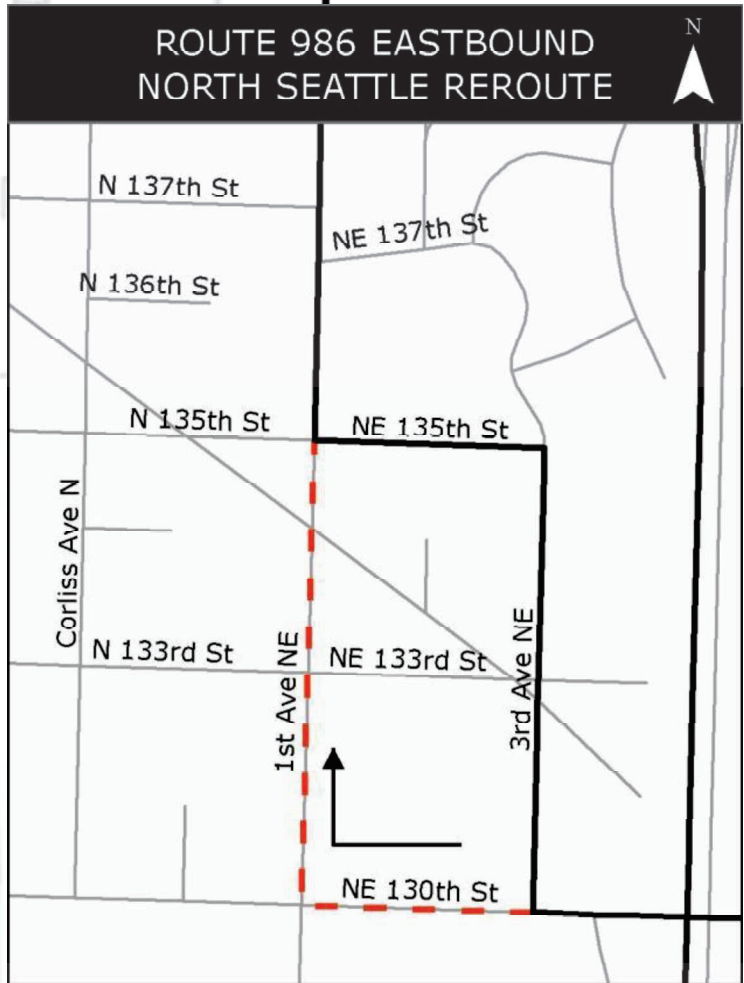
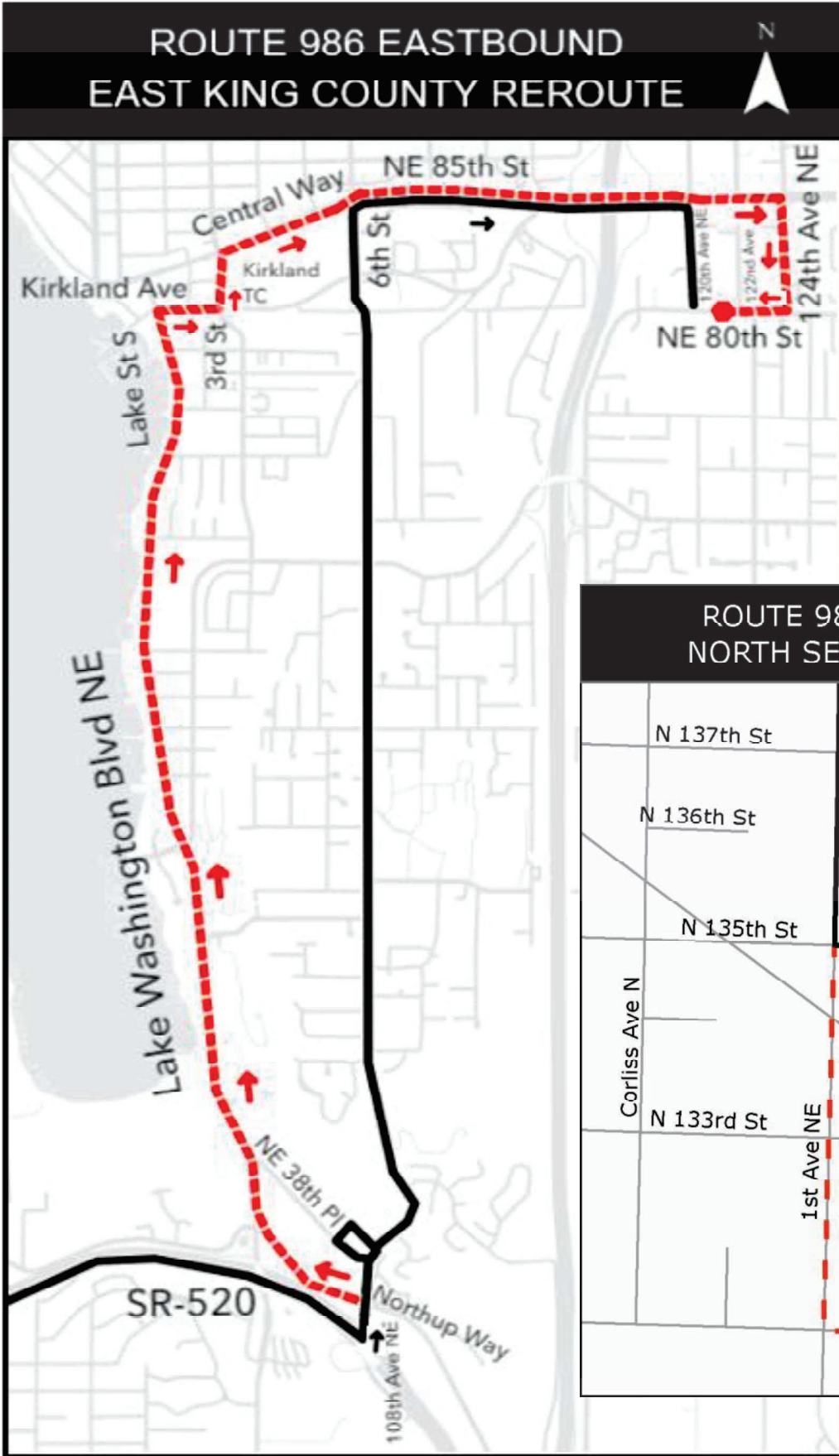
R Kirkland Av  
L Lake St S  
C Lake Washington Blvd NE  
2 NE 38 PI

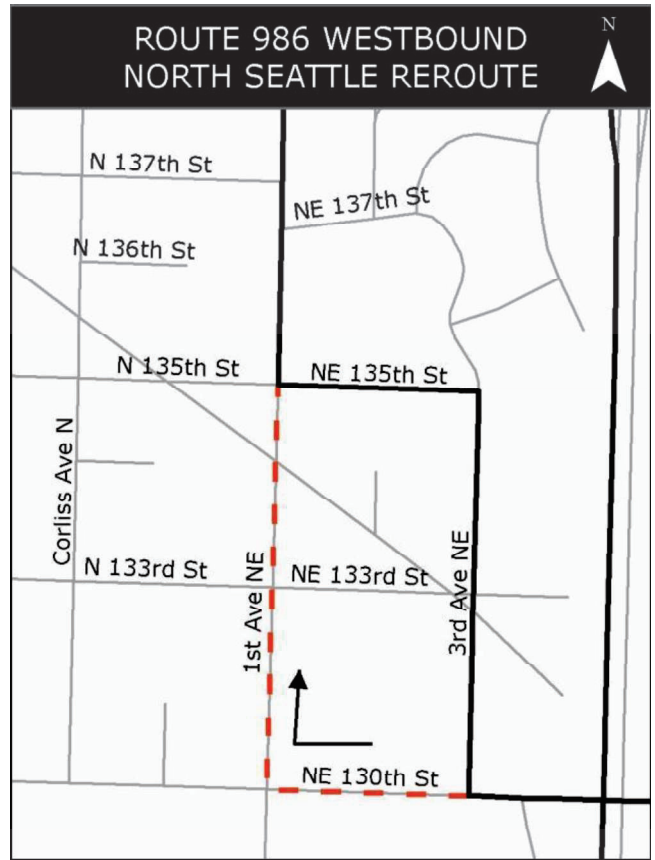
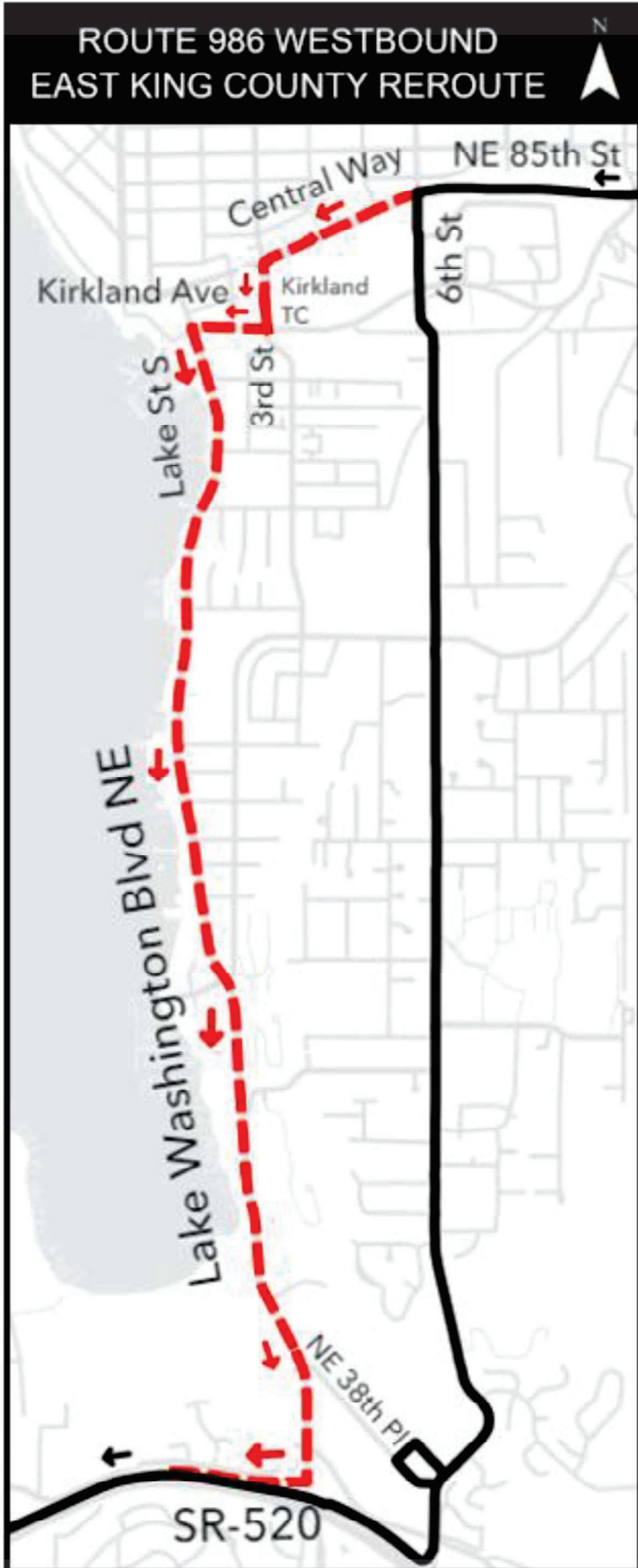
**Watch for customers from Rt 255 Shuttle**

C Lake Washington Blvd NE  
R Entr to WB SR-520  
C SR-520  
C Regular route

**NORTH SEATTLE REROUTE**

2 3 Av NE & NE 130 St  
C NE 130 St  
R 1 Av NE  
2 Stop fs NE 135 St  
C Regular route





# Rt. 987

# East Base

## NORTHBOUND

To: Lakeside School (Haller Lake)  
From: South Park

## SOUTHBOUND

To: South Park  
From: NE 135 St/1 Av NE (Lakeside School)

### NORTH SEATTLE REROUTE

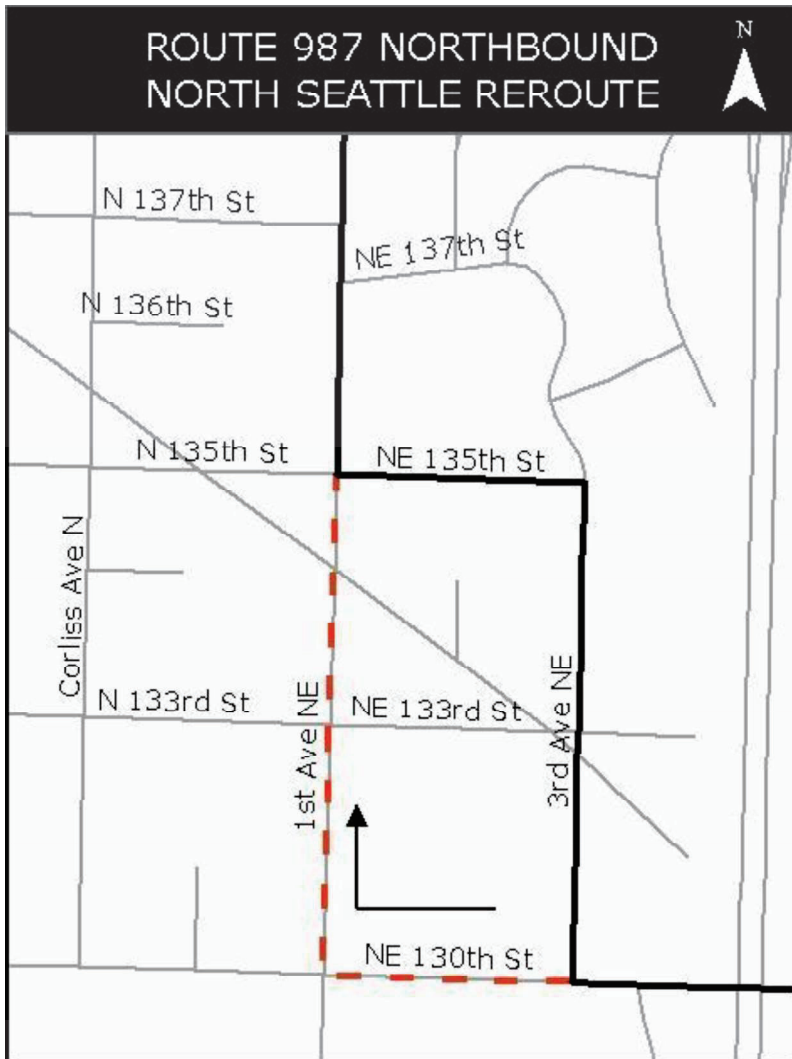
#### Operate regular route

- 2 3 Av NE & NE 130 St
- C NE 130 St
- R 1 Av NE
- 2 Stop fs NE 135 St
- C Regular route

### NORTH SEATTLE REROUTE

#### From temp Terminal 1 Av NE/FS NE 135 St

- C Regular route



# Rt. 988

# East Base

## NORTHBOUND

To: Haller Lake (Lakeside School)  
From: E Union St/33 Av E

## SOUTHBOUND

To: Madrona  
From: NE 135 St/1 Av NE (Lakeside School)

### NORTH SEATTLE REROUTE

#### Operate regular route

- 2 3 Av NE & NE 130 St
- C NE 130 St
- R 1 Av NE
- 2 Stop fs NE 135 St
- C Regular route

### NORTH SEATTLE REROUTE

#### From temp Terminal 1 Av NE/FS NE 135 St

- C Regular route



# Rt. 989

# East Base

## EASTBOUND

To: Fatoria Blvd SE/Coal Creek Pkwy SE  
From: Temp Terminal

## WESTBOUND

To: Temp Terminal  
From: Fatoria Blvd SE/Coal Creek Pkwy SE

### NORTH SEATTLE REROUTE

From temp Terminal 1 Av NE/FS NE 135 St

C Regular route

### EAST KING COUNTY REROUTE

Operate regular route

- 2 EB I-90 at Exit #10B
- C I-90
- R "150 Av SE/156 Av SE" Exit (#11A)
- R "150 Av SE" Exit
- L 150 Av SE
- L SE Eastgate Wy
- R Entr to Eastgate P&R
- 2 Bay 1
- C Thru P&R
- L 140 Av SE
- L SE Eastgate Wy
- R 150 Av SE
- R SE Newport Wy
- C Regular route

### EAST KING COUNTY REROUTE

Operate regular route

- 2 SE Newport Wy & SE Allen Rd
- C SE Newport Wy
- L 150 Av SE
- L SE Eastgate Wy
- R Entr to Eastgate P&R
- 2 Bay 1
- C Thru P&R
- L 140 Av SE
- R SE Eastgate Wy
- C Entr to WB I-90
- C Regular route

### NORTH SEATTLE REROUTE

Operate regular route

- 2 3 Av NE & NE 130 St
- C NE 130 St
- R 1 Av NE
- 2 Stop fs NE 135 St

