

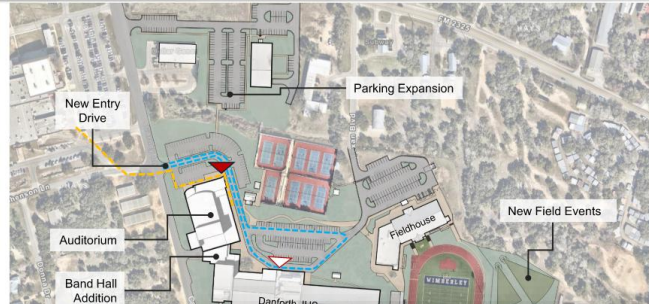
11.17.2025

# Wimberley Independent School District Bond 2025 Projects



O'CONNELL ROBERTSON

## Danforth Junior High - Site Plan



- WHS route to Auditorium
- Danforth parent loop
- ▼ DJHS Main Entry
- ▼ Auditorium Entry

## Danforth Junior High Campus Work

### Auditorium:

- 600 seat theater and support spaces
- Choir rehearsal hall
- Theater classroom

### Band Hall:

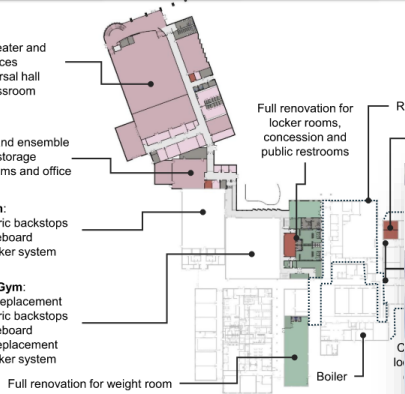
- Rehearsal and ensemble
- Instrument storage
- Practice rooms and office

### Auxiliary Gym:

- New electric backstops
- New scoreboard
- New speaker system

### Competition Gym:

- Bleacher replacement
- New electric backstops
- New scoreboard
- Flooring replacement
- New speaker system

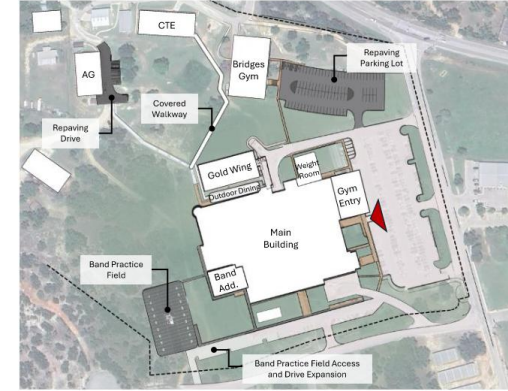


- Across building
- Security technology
  - Flooring replacement
  - Lighting replacement

## Danforth Junior High – Auditorium Exterior Concepts



## Wimberley High School – Site Plan



### Outdoor Dining

- General landscaping and hardscaping improvements
- Shade structure

### Bridges Gym Improvements

- Powered BB Goals
- Powered Bleachers
- Scoreboard + Sound Reinforcement
- Water Heater Improvements

### Site Connection

- Pedestrian path to new auditorium + overflow parking

- ▼ WHS Main Entry

### Existing Theater:

- Full renovation of theater shop and classroom to typical classrooms
- New corridor for classroom access

All graphics are concepts for illustrative purposes only. O'CONNELL ROBERTSON 1

### Weight Room:

- 4,885 SF addition
- Interior corridor access from athletic locker rooms
- Storage + single-user restrooms

### Main Gym:

- New Bleachers
- Powered BB Goals
- New Floor + Lighting
- Scoreboard + Sound Reinforcement

### Gym Entry:

- 4,430 SF addition
- "Wall of Honor" – trophy and achievement display lobby
- Concessions, restrooms, storage

O'CONNELL ROBERTSON 1

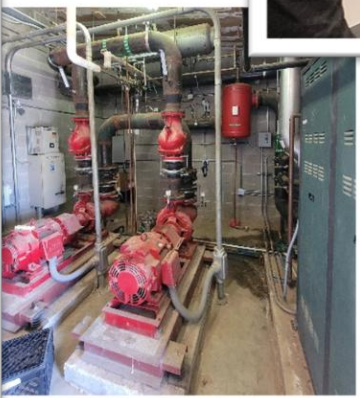
# 2025 WISD Bond Projects – Board Meeting Recap

All graphics are concepts for illustrative purposes only – designs will be developed at a later date.

# Design Process and Engagement

## Design Engagement

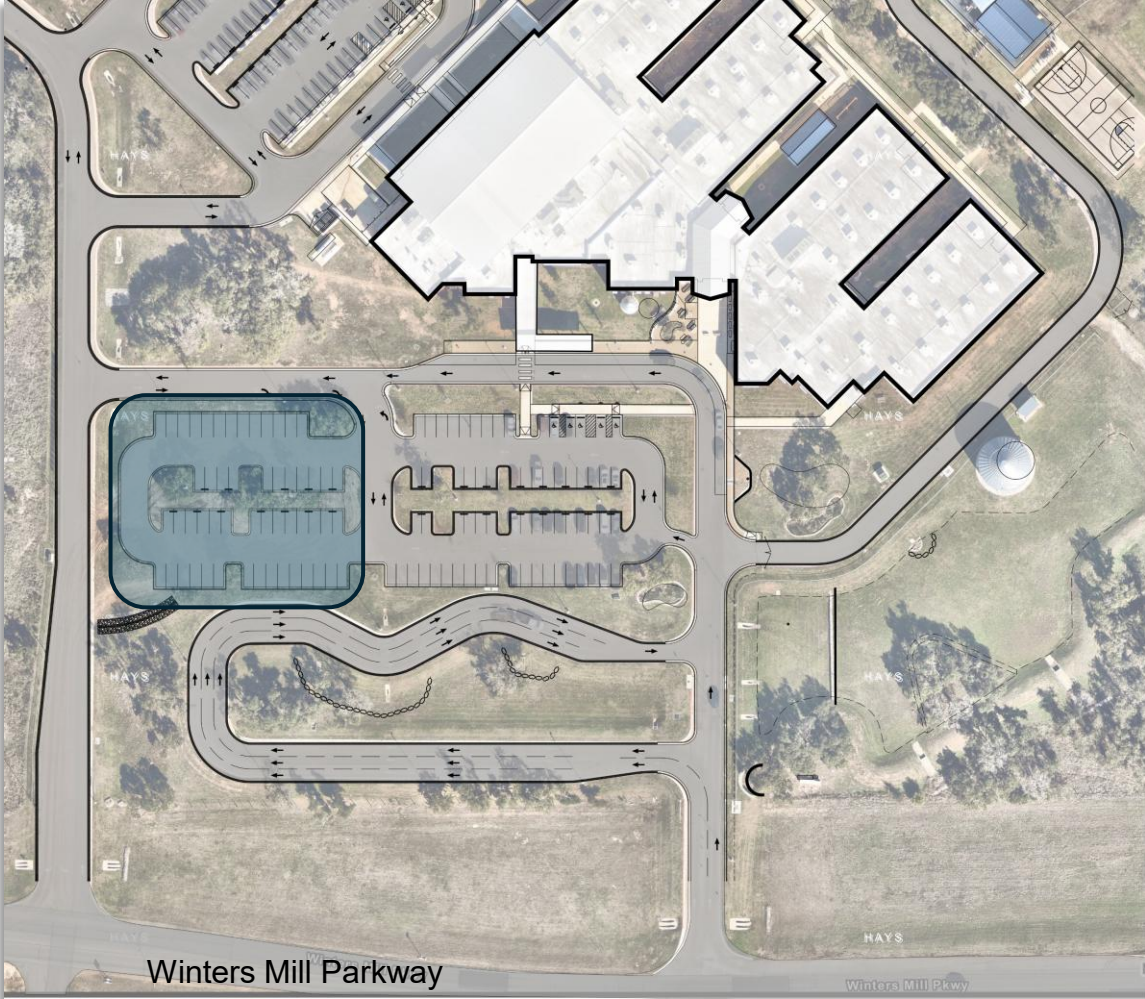
- 35+** User, client, and planning meetings
- On-site** investigation and analysis
- Facility** tours for performing arts and athletics



# Blue Hole Primary – Additional Parking

Blue Hole Primary:

Additional 50 parking stalls to support the campus



# Multi-Campus Roofing & HVAC Replacement

Jacob's Well:  
Roofing Replacement  
Mechanical Unit  
Replacement

Texan Academy at  
Scudder:  
Partial Roofing  
Replacement  
Mechanical Unit  
Replacement

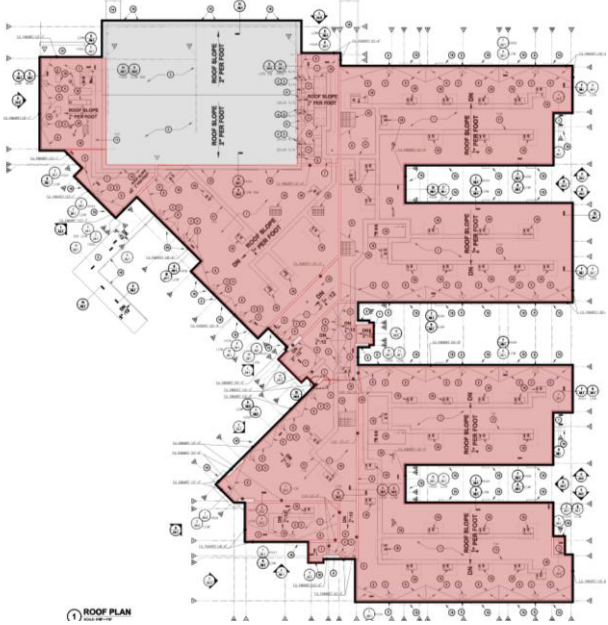
Blue Hole Primary:  
Roofing Replacement



Blue Hole Primary



Texan Academy at Scudder



Jacob's Well Elementary



# Next Steps

**Design Development** Presentation Danforth Junior High and Wimberley High School

Move forward into **Contract Documents**

**Bid / GMP Approval** – November '25

March '26

