

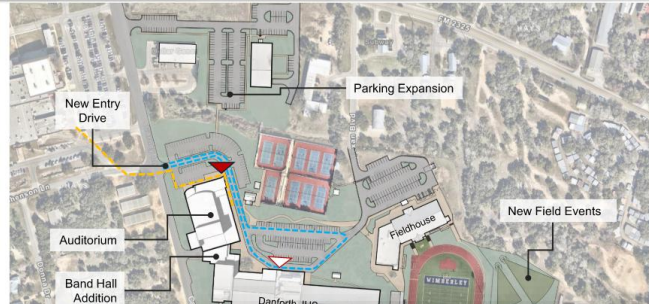
10.27.2025

Wimberley Independent School District Bond 2025 Projects



O'CONNELL ROBERTSON

Danforth Junior High - Site Plan



- WHS route to Auditorium
- Danforth parent loop
- ▼ DJHS Main Entry
- ▼ Auditorium Entry

Danforth Junior High Campus Work

Auditorium:

- 600 seat theater and support spaces
- Choir rehearsal hall
- Theater classroom

Band Hall:

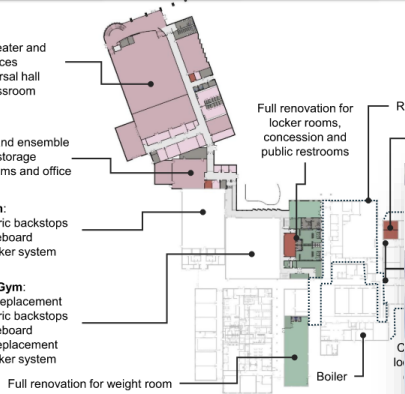
- Rehearsal and ensemble
- Instrument storage
- Practice rooms and office

Auxiliary Gym:

- New electric backstops
- New scoreboard
- New speaker system

Competition Gym:

- Bleacher replacement
- New electric backstops
- New scoreboard
- Flooring replacement
- New speaker system



Full renovation for locker rooms, concession and public restrooms

Replace roofs

Renovation for counselor suite

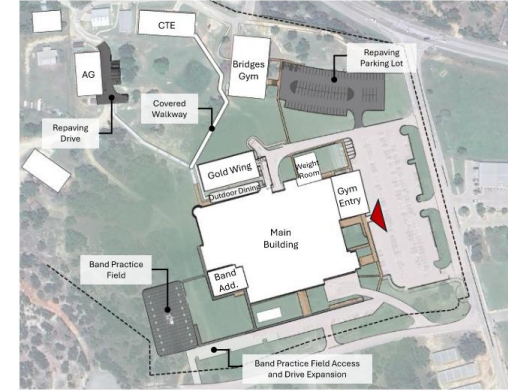
Across building

- Security technology
- Flooring replacement
- Lighting replacement

Danforth Junior High – Auditorium Exterior Concepts



Wimberley High School – Site Plan



Outdoor Dining

- General landscaping and hardscaping improvements
- Shade structure

Bridges Gym Improvements

- Powered BB Goals
- Powered Bleachers
- Scoreboard + Sound Reinforcement
- Water Heater Improvements

Site Connection

- Pedestrian path to new auditorium + overflow parking

▼ WHS Main Entry

Existing Theater:

- Full renovation of theater shop and classroom to typical classrooms
- New corridor for classroom access

Weight Room:

- 4,885 SF addition
- Interior corridor access from athletic locker rooms
- Storage + single-user restrooms

Main Gym:

- New Bleachers
- Powered BB Goals
- New Floor + Lighting
- Scoreboard + Sound Reinforcement

Gym Entry:

- 4,430 SF addition
- "Wall of Honor" – trophy and achievement display lobby
- Concessions, restrooms, storage

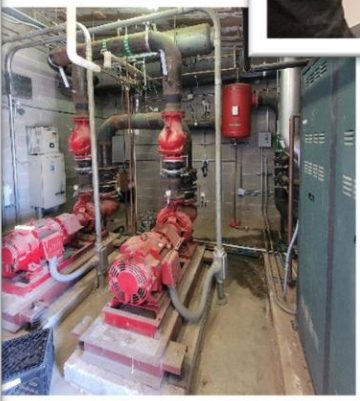
2025 WISD Bond Projects – September Board Meeting Recap

All graphics are concepts for illustrative purposes only – designs will be developed at a later date.

Schematic Design Process and Engagement

Design Engagement

- 30+** User, client, and planning meetings
- On-site** investigation and analysis
- Facility** tours for performing arts and athletics



Danforth Junior High & Multipurpose Educational Auditorium



2025 WISD Bond Program – Construction Cost Estimates

Budget: Bid Package 2 & 3 – WHS, DJHS, Texan Stadium, Activity Center \$ 85,178,400

Schematic Design Estimate: Bid Package 2 & 3 – WHS, DJHS, Texan Stadium, Activity Center \$ 86,049,185

Total Variance \$ (870,785)

Schematic design estimates are an initial check of the cost of work and are subject to change

-next phase of design deliverable is the Design Development more defined design = more defined cost estimate

Next Steps

Design Development Presentation

Move forward into **Contract Documents**

Bid / GMP Approval – November '25

March '26

