

# Mental Health Awareness



*Break the Stigma*



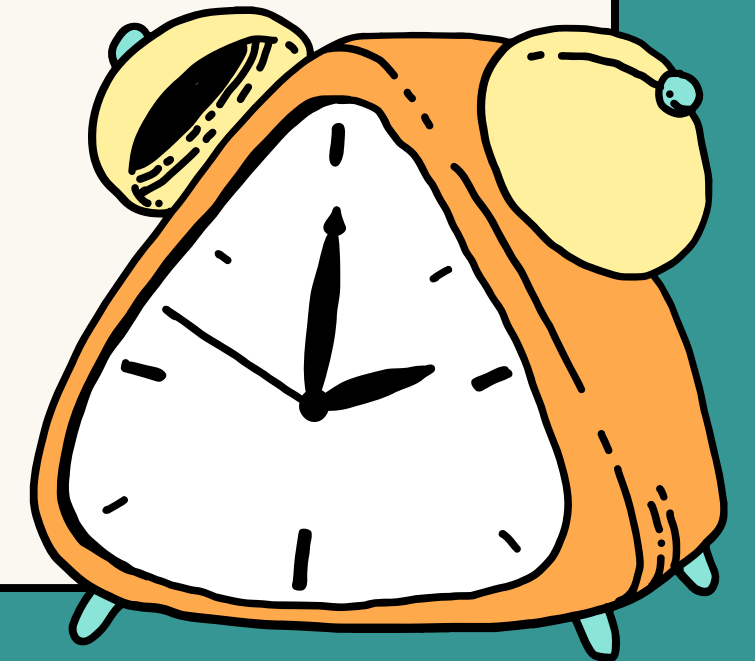
by Nurse Taylor BSN, RN



# Announcements

Mental Health Awareness Month is an opportunity to understand and support specific challenges affecting our students.

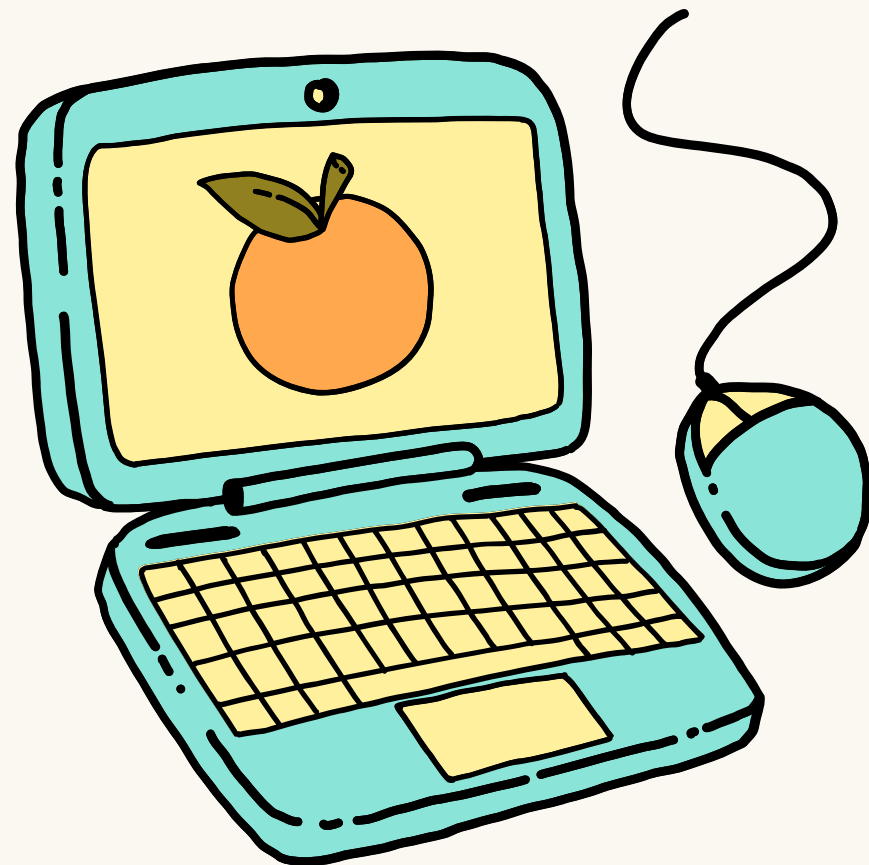
Our policies and procedures are designed to foster a safe learning environment for all students.



# State Resources

## New Jersey Children's System of Care

[click here for more information](#)



## New Jersey Department of Health

[click here for more information](#)



## New Jersey Student Support Services

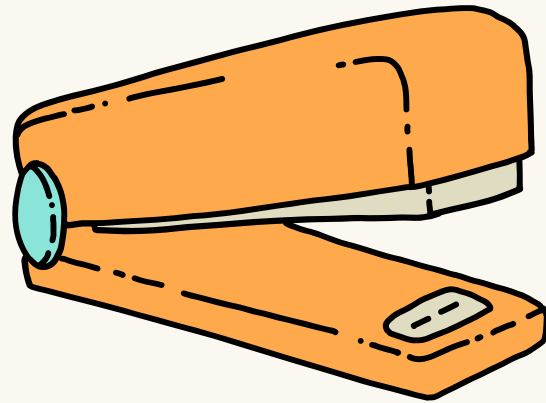
[click here for more information](#)



# Cherry Hill Public Schools

## ***Mental Health Resources***

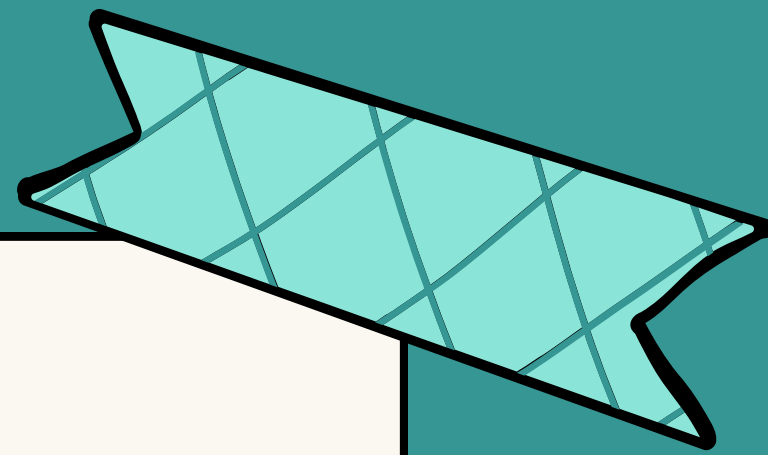
[click here](#)



## ***Mental Health Initiatives***

[click here](#)





# THANK YOU

*questions? email [tbalsama@chclc.org](mailto:tbalsama@chclc.org)*

