



Focused on Results

Superintendent's Message

I am pleased to present this year's District Service Report. This document provides a comprehensive report on the results, resources, and supports that Oakland Schools provides to our local districts. As the Intermediate School District, our commitment is straightforward: deliver high-quality services that help advance the art of teaching and learning for the more than 170,000 students we serve in Oakland County. To that end, I am proud to announce that in the 2024-25 fiscal year, 94% of our recurring funding supported programs and services in our county's school districts. This outcome represents more than \$385M in direct services to help meet the needs of students and families.

With more than three decades in public education, I have had the privilege of seeing firsthand what strong, mission-driven teams can accomplish. Service, expertise, and excellence form the foundation of Oakland Schools. The partnership we share with our districts, coupled with the support of our broader community, reinforces my belief that we are on the right track to ensure every student is supported, every day.

As you review this report, please reflect on how your district is using our services and where additional support may be helpful. We remain committed to strengthening our partnership, listening to your feedback, and refining our work so we continue to deliver results that matter. I welcome your feedback and comments as we continually focus on student achievement and on improving our services.

Please feel free to contact me at 248.209.2123. I look forward to our continued collaboration.

Sincerely,



Kenneth Gutman
Superintendent, Oakland Schools



Table of Contents

Focused on Results	2	Professional Development	23	Support Services	35
Every Student. Every Day.	4	Regional Education Media Center (REMC)	24	Legal Affairs	37
Who We Are	6	District and School Services	25	Technology Services	38
What We Do for Districts	7	• Aggregate Hours of Customized Consultant Services by District - July 1, 2024 to June 30, 2025	26	Countywide Technology Support	39
Student Services	12	• Literacy Essentials Oakland (LEO 2.0)	26	Online Application Glossary	40
Career Readiness	13	• Essential Practices in Instruction Capacity & Coherence (EPIC2)	26	Online Application Usage	41
Career and Technical Education	15	• 31N Caring for Students/31P TRAILS Implementation	27	Application Services	42
Accelerated College Experience (Oakland ACE)	16	• Immigrant & Newcomer Student Services	27	Focus on Cybersecurity	43
Virtual Learning Academy Consortium (VLAC)	17	• Developmental Screening	27	Regional and Statewide Initiatives	43
Special Populations	18	• GSRP Continuous Improvement Goals	27	Shared Services	44
• Compliance	18	• Strengthening School Mental Health and Family Engagement Community of Practice	27	Human Resources	45
• Capacity Building	19	• Consultation	28	Production Printing and Graphics	46
• Services for Students with Complex Needs	19	• Professional Learning for Educators	28	Fingerprinting	47
• Materials Center	20	• Networking Groups for Educators	29	Medicaid Services	48
• Student Services for Low Incidence	21	• Resource Development	31	Michigan Green Schools	50
Truancy	22	• Advocacy for Oakland County Students at the State Level	31	Notes	51
		• Community Engagement	33		
		• Consortium Pricing and Other Cost Savings	33		
		• Community Engagement	34		

Every Student. Every Day.

What is an Intermediate School District?

Created by the Legislature in 1962, Oakland Schools is one of Michigan's 56 educational service agencies that save money and resources for K-12 districts by:

- Providing consolidated support and services
- Training teachers in the latest research-based methods
- Piloting innovative programs
- Coordinating early childhood, special education and vocational services across the regions

Oakland Schools is an autonomous, tax-supported public school district governed by Michigan General School Laws.

The mission of Michigan's educational service agencies (ISDs, RESAs and RESDs) is to provide visionary leadership and quality services to strengthen teaching and learning for all citizens.

Service Highlights

Oakland Schools is committed to improving student achievement through the research-based development and effective delivery and support of innovative, high-quality instructional products and services in partnership with the schools we serve.

We support teaching and learning in the areas of general, special and career-focused education, and provide assistance in business operations and technology. We also support mandated compliance with state and federal regulations with a variety of services.

Everything a district needs, from workshops on the latest teaching methods, on-site consulting and help with school improvement and curriculum, to management software, food service support and testing of students with special needs (and more), is provided by Oakland Schools.

Oakland Schools' commitment to regionalizing services and supporting collaboration across Oakland County enables local schools and districts to operate more efficiently and economically, saving administrative costs/dollars that can be used directly in the classroom.



How This Data Was Collected

In an effort to focus on results and accountability, Oakland Schools has taken steps to track the services provided to local districts through both quantitative and qualitative measures.

For 2024-25, Oakland Schools collected data in the areas of professional development, assistance and consultation, direct services to students and student achievement.

The data collection tools included online tracking, Excel spreadsheets and project management software. EBMS software is also used by our Event Management team to schedule professional development workshops, register participants and track State Continuing Education Clock Hours (SCECHs).

As we continue to report our services to district customers, we seek to continuously improve our service tracking methods and find meaningful ways to convey our value to our constituents.

Please share your feedback with the Department of Communication Services at communicationservices@oakland.k12.mi.us.

Our Four Continuous Improvement Plan Goals

These broad, organizational goals guide the work of Oakland Schools and provide the framework for departmental planning and initiatives.

1. **Equity:** We will allocate and manage our resources to ensure all learners will have opportunity and access to high-quality education.
2. **Well-being:** We will promote, develop and implement practices to support positive social, emotional, mental and physical well-being of all learners.
3. **Excellence:** We will strengthen the professional practice of educators in order for children and students to achieve high levels of academic performance, acquire essential life skills and demonstrate active citizenship.
4. **Operations:** We will develop and maintain efficient business, financial, human resource, instructional and technology systems to support high-quality education.

Our Statement of Purpose

Every Student. Every Day.

Our Beliefs

- It's about service.
- Students form the lens through which our best educational decisions are made.
- All students can and will learn.
- Collaboration builds understanding.
- Education is a shared responsibility.
- Our success depends upon our employees.
- Change is opportunity.
- Lifelong learning is a key to lifelong success.
- Effective relationships are powerful.
- Differences expand our thinking.
- Visionary leadership creates a dynamic environment.
- We must develop leaders for tomorrow.
- Ethical behavior is everyone's responsibility.

Our Credo

Service, expertise and excellence form the foundation of Oakland Schools. We prepare students to be meaningful contributors in a diverse society. Continuous learning drives our efforts to support local districts and the community while fostering a global perspective. Organizational strength and effectiveness come from inclusion, advocacy, innovation and leadership. We share responsibility for leading the Oakland County educational community.

We believe our first responsibility is to the educators of Oakland County, their students and families. We believe that all students can learn, and will, given the right resources and time. Our services, products, tools and knowledge are focused to support high levels of student achievement, maximize resources and meet compliance obligations. Through visionary leadership and inclusive relationships, we develop regional capacity for the continuous improvement of student learning.

We believe every employee can be highly productive. We support ongoing learning by providing necessary tools and resources. We hold one another to a high standard of professionalism, respect, integrity and fairness. Together, we embrace a culture that promotes ideas and innovation as it encourages creativity and fun. We deliver high-quality service as we advocate for every child.

We collaborate with the Oakland County community and develop strong partnerships with all levels of government, business, social agencies and education to enhance the quality of life in this region. These collaborations strengthen teaching and learning and increase opportunities for Oakland County students as they graduate to a global economy.

For all those with whom we work and whom we serve, we pledge to partner in practices that honor collaboration, responsible stewardship of public resources, transparent business practices and ethical behavior.

Cognia

In June 2018, Oakland Schools was granted accreditation from the AdvancED Accreditation Commission (now Cognia), the national commission that confers the North Central Association Commission on Accreditation and School Improvement (NCA CASI) accreditation seal. The Accreditation process provides a national protocol for education service agencies committed to systemic, systematic, and sustainable continuous improvement. The process supports, enhances, and stimulates growth and improvement throughout the agency. The accreditation process involves three ongoing components: 1) meeting high-quality standards; 2) implementing a continuous process of improvement; and 3) engaging in quality assurance through internal and external review. In June 2022, Oakland Schools transitioned to a Cognia membership, which provides access to global improvement leaders and resources.



Who We Are

Board of Education

Oakland Schools is overseen by the Oakland Schools Board of Education. Our board is elected to six-year staggered terms every other year by the boards of Oakland County’s 28 school districts. Candidates are registered electors, and are often local board members.

The board meets twice each month at Oakland Schools unless otherwise noted on the board calendar. These public meetings are posted both on the Oakland Schools website and at the Oakland Schools Educational Service & Professional Development Center, as are property transfer hearings.

Access to meeting schedules, agendas, minutes and handouts are available on the Oakland Schools website at www.oakland.k12.mi.us under “About Us,” “Board of Education.”

Oakland Schools Board of Education



Mr. Marc Katz
President



Mr. Connie Williams
Vice President



Mr. Steve Gottlieb
Treasurer



Mrs. Carol Finkelstein
Secretary



Mr. George Ehlert
Trustee

Administration

Kenneth Gutman, *Superintendent* 248.209.2123

Dr. Christopher J. Delgado, *Deputy Superintendent* 248.209.2517

Teri Les, *Assistant Superintendent of Finance and Operations*..... 248.209.2368

Dandridge Floyd, *Assistant Superintendent for Human Resources, Personnel Management and Labor Relations* 248.209.2429

Leadership Team

William Chatfield, *Executive Director of Auxiliary Services/Maintenance & Facility Operations* 248.209.2209

Sheri Stuart Collins, *Director of Communication Services* 248.209.2181

Michelle Saunders, *Executive Director of Financial Services*... 248.209.2122

Lisa Hansknecht, *Executive Director of Government Relations and Community Services* 248.209.2137

David Randels, *Executive Director of Government Relations, Education Policy and Research* 248.209.2077

Sherry McMillan, Esq., *Executive Director of Legal Affairs* 248.209.2062

Jessica Carrier, *Executive Director of Special Populations* 248.209.2533

Jarrad Grandy, *Executive Director of Student Services* 248.209.2154

Dwight Levens, *Executive Director of Technology Services* 248.209.2180

Carol Anthony, *Executive Director of District and School Services* 248.209.2184

What We Do for Districts

Oakland Schools Takes Accountability Seriously

Much of what we do as an intermediate school district (ISD) is mandated by federal or state laws with built-in reporting requirements. In addition to these requirements, **Oakland Schools also communicates regularly with referent groups and associations to ensure stakeholders are made aware of the services, resources, and assistance provided for the funding we receive.**

These include:

- An annual budget meeting with school board designates and superintendents who review Oakland Schools' budget and pass resolutions at the local district level regarding support for the General Fund budget as presented.
- Referent groups such as the Oakland County Superintendents Association, Oakland County School Boards Association, Oakland County School Business Officials, Oakland County Schools Public Relations Association and Oakland County Teaching & Learning Council, among others.
- A countywide Special Education Parent Advisory Council (PAC) that meets regularly to provide input on special education issues and review the ISD Special Education plan.
- A countywide Education Advisory Group made up of community and business leaders for Career Focused Education.
- A regular update to the Oakland Schools Continuous Improvement Plan (CIP) that includes organizational goals, activities to accomplish those goals and progress measures.
- Independent financial audits of Oakland Schools' revenues and expenditures are reported to the Oakland Schools Board of Education and shared with the local districts we serve.
- Ongoing reporting to the Michigan Department of Education to ensure compliance.
- Annual publication and website posting of our ISD Annual Report and the Budget and Salary/Compensation Transparency Reporting.



Oakland Schools is a recipient of the **Certificate of Excellence in Financial Reporting** award, given by the Association of School Business Officials for comprehensive financial reporting for fiscal years 1996-2001, 2003-2024.

Oakland Schools Finances

Oakland Schools is financed by Oakland County taxpayers through an annual authorized property tax millage. **The combined millage rate for 2024-2025 was 3.1541 mills**, Oakland Schools operates using three major funds:

- General Education Fund provides instructional and administrative support for districts and obtains revenue largely from a property tax levy. **Oakland Schools was authorized to collect 0.1874 of a mill on the county tax base for 2024-2025.**
- **Special Education Fund was supported by a tax of 2.3837 mills levied on the county tax base for 2024-2025.** This fund supports Special Education administration, student services and educational consulting services at Oakland Schools and center programs in local districts.
- **Career Focused Education Fund was supported primarily by a levy of 0.5830 on the Oakland County tax base in 2024-2025.** This fund supports vocational technical education administration, the four Oakland Schools Technical Campuses that serve students from all 28 local school districts and the CFE Regional Plan.
- In addition to the three major funds, grants are actively sought to defray costs of regional projects. Oakland Schools serves as the fiscal agent for many such grants that fund ongoing and pilot projects for the benefit of Oakland County students.



What We Do for Districts

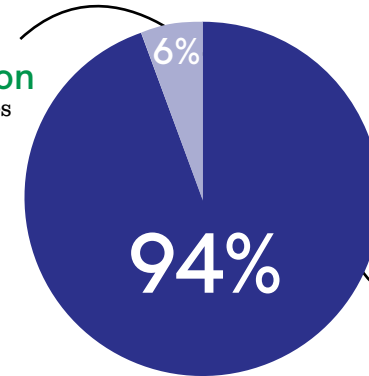
Direct Support to Local Districts

Oakland Schools is committed to putting the majority of our dollars directly where the funds can most benefit students: in our schools and classrooms. The dollars that flow through the ISD are carefully monitored to ensure they are spent as mandated, audited regularly and go back to local districts to support the teaching and learning mission. **We are pleased that in 2024-25, 94% of our recurring funding went to support programs and services in our county's school districts.**

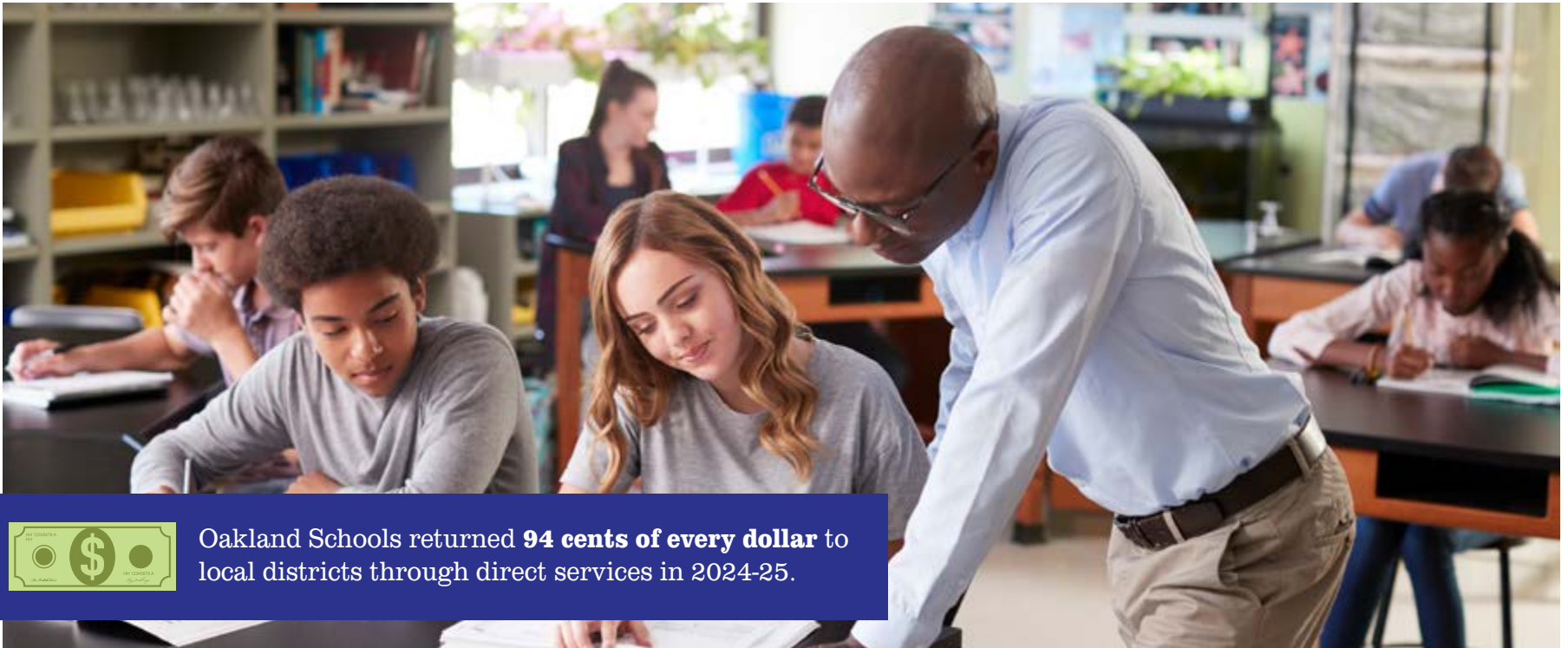
In the graphic to the right, Indirect Services are defined as the administrative-specific expenditures in the General Education, Special Education and Career-Focused Education Funds, in addition to operating transfers, debt service and capital outlay that do not directly relate to services to local districts.

Oakland Schools Fiscal Year 2024-25 Total Expenditure Summary

\$26.5 million
Indirect services



\$385.5 million
Direct services provided
to LEAs, PSAs



Oakland Schools returned **94 cents of every dollar** to local districts through direct services in 2024-25.

Districts Save Money With Cooperative Purchasing

The Oakland Schools Office of Procurement & Contracting:

- compiles and maintains an online cooperative bid list of local, regional, state and national bids for districts to use at www.cooperativecontracts.com.
- assists districts with conducting Invitations for Bids (IFBs) and Requests for Proposals (RFPs) as needed.
- conducts various countywide bids to support local districts such as pool supplies and chemicals, technology design services, temporary staffing services, hourly trades for plumbing, painting, HVAC, electrical, and carpentry services.
- educates the vendor community on how to do business with school districts in Oakland County at vendor outreach events.

Please visit the Procurement and Contracting page on the Oakland Schools website at www.oakland.k12.mi.us for more information on how we can help you maximize your resources with these cost efficiencies.

In 2024-2025, districts participated in the following consortia and cooperative agreement(s):

- Members of the MOR Purchasing Cooperative in Oakland, Wayne and Macomb counties save on food, supplies and USDA food purchases for Child Nutrition Programs and spent **\$56,819,532** in discounted products and services, saving them time and effort.



What We Do for Students

Improving Student Achievement

It is Oakland Schools' role to work behind the scenes, helping those who teach Oakland County's students. Although we do not have direct responsibility for guiding student achievement, we believe there is a correlation between the instructional support we provide and the gains made by students of the teachers we train, coach and support. We are proud to be one of the reasons behind the outstanding achievement of Oakland County students as we compare them to the state averages of standardized tests.

State Assessments

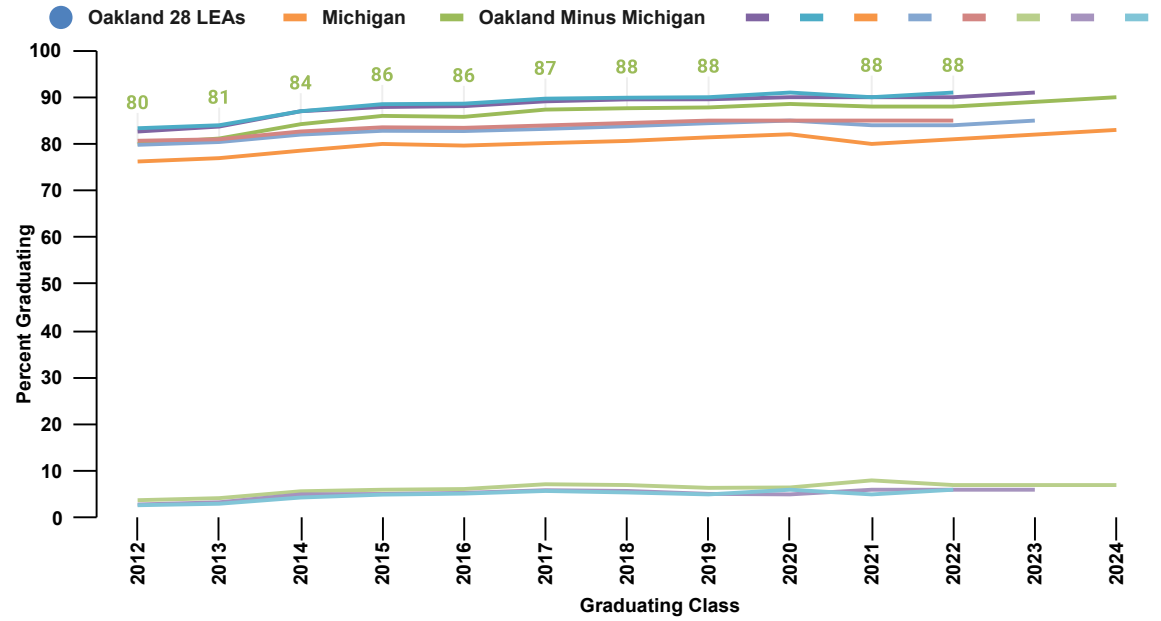
The Michigan Student Test of Educational Progress (M-STEP) is the general summative assessment and is administered each spring to students in grades 3 through 8 and 11. The assessment consists of multiple components: English language arts and mathematics assessed in grades 3-8; science in grades 5, 8 and 11; and social studies in grades 5, 8 and 11. Note: Beginning in the spring of 2019, the state replaced the M-STEP English Language Arts and Mathematics for grade 8 with the PSAT 8/9.

The Michigan Merit Examination (MME) is the general assessment for students in grade 11 and eligible students in grade 12 based on Michigan high school standards. It is administered each spring and consists of three components: College Board SAT; WorkKeys job skills assessment; and M-STEP Science and Social Studies. The state also gives every student in grade 9 the PSAT 8/9 and grade 10 the PSAT 10.

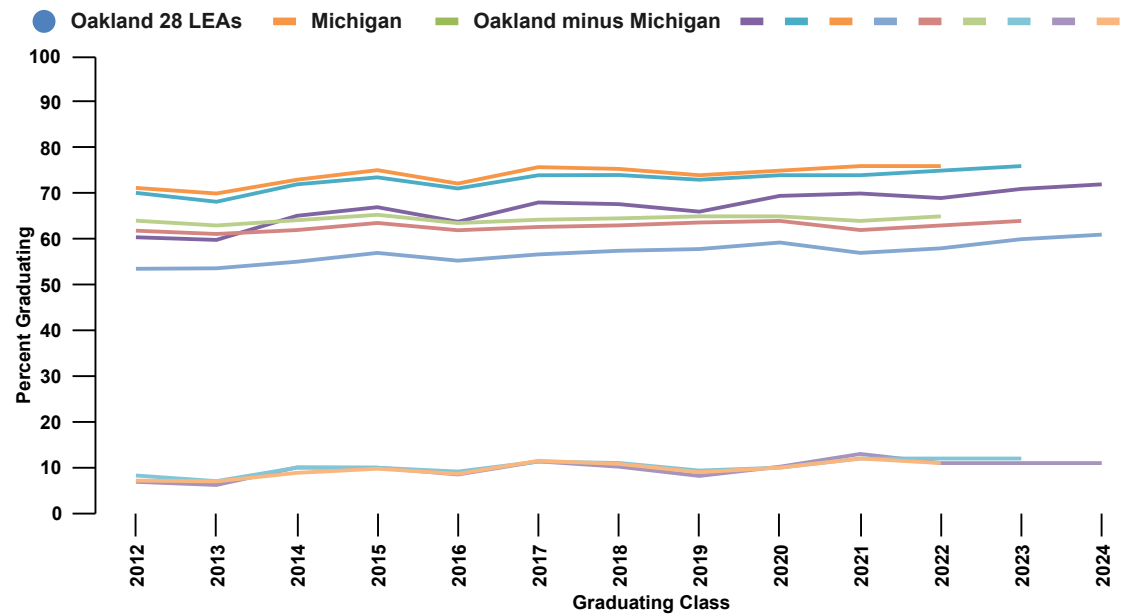




4, 5, and 6 Year Graduation Rates Classes of 2012-2024



4, 5, and 6 Year Graduation Rates for Students with IEPs Classes of 2012-2024



Student Services

Providing consulting, coordinating, and direct educational services and programs for K-12 students across Oakland County.

Career Focused Education (CFE)

CFE offers many other regional initiatives that provide direct support to Oakland County educators, students, families and industry professionals. Partnering with industry and our local districts, CFE helps all students become career ready, which makes their learning directly relevant to their future.

Career Readiness

In partnership with our local school districts and employers, the Oakland Schools K-12 Career Readiness unit helps deliver researched-based strategies for career awareness, career exploration and career planning through a gradual release professional development model, improved counseling processes, stronger connections to business and industry and value-added administrative practices.

Oakland Schools Technical Campuses (OSTC)

Oakland Schools operates four regional technical campuses where students spend half their school days preparing to meet the demands of post-secondary education and the expectations of employers in 17 programs of study.

Accelerated College Experience (OaklandACE)

Oakland ACE is an early middle college program for Oakland County high school students. The three-year program combines 11th and 12th grades with an additional year at Oakland Community College or Lawrence Technological University. Oakland ACE offers students the opportunity, guidance and support to earn a MEMCA (Michigan Early Middle College Association) certification and up to 62 credits towards an associate degree.

Virtual Learning Academy Consortium (VLAC)

VLAC is a 100% virtual asynchronous turn-key solution for public schools. VLAC handles all the technology, state testing and pupil accounting requirements for its students while offering parents an established, high-quality, educational delivery option for their kindergarten through 12th grade learners. The program features curricula aligned with state standards including an online platform, digital resources and print materials that empower parents to take an active role in their child's education in tandem with state certified Oakland Schools teachers.

State-Approved CTE Programs Offered Locally by Districts Across Oakland County	State-Approved CTE Programs Offered Regionally by Oakland Schools	Early College Programs Offered Regionally by Oakland Schools	K-12 Programs Offered Regionally by Oakland Schools	Career Ready Services Offered Regionally by Oakland Schools
<ul style="list-style-type: none"> • Agriscience • Automobile Tech • Aviation • Biomedical Sciences • Business Administration • Computer Networking • Computer Programming • Construction • Culinary Arts • Cybersecurity • Digital/Multimedia • Drafting/Design • Education • Engineering Tech • Family & Consumer Sciences • Finance • Graphics • Health Sciences • JROTC • Marketing • Mechanical Drafting • Mechatronics • Public Safety • Radio & TV • Visual & Performing Arts • Welding • Woodworking • 267 District Programs 	<ul style="list-style-type: none"> • Agriscience • Automobile Tech • Collision Repair • Computer Programming • Construction • Cosmetology • Criminal Justice • Culinary Arts • Cybersecurity • Energy • Graphics • Health Sciences • Machine Tool • Marketing • Mechatronics • Medium/Heavy Truck • Welding • 76 OSTC Programs 	<p>ACE: Accelerated College Experience offers support for development of college-readiness skills while earning transferable college credit (up to an associate degree)</p> <p>OTEC:</p> <ul style="list-style-type: none"> • Oakland Technical Early College • Collision Repair • Computer Networking • Computer Programming • Cybersecurity • Graphics • Health Sciences • Machine Tool • Marketing • Mechatronics • Welding 	<p>VLAC (Virtual Learning Academy): 100% online learning curriculum for Kindergarten-12th grade students established in 2013-2014.</p>	<p>Industry Tours</p> <p>Job Shadows</p> <p>OCCRA High School Robotics</p> <p>OCCRA FTC Middle School Robotics</p> <p>Educator Events:</p> <ul style="list-style-type: none"> • Amazing Shake Training • Career Day at Detroit Boat Show • Career Development Practitioner • Career Readiness District Contact • Collaborative Career Readiness PL Series • Curriculum Connections: Educators in Industry at ABB • Curriculum Connections: MiStem Educators in Industry • d.Solve: Design Thinking for Educators • d.Solve: Student Showcase • HBCU College Fair • Oakland Career Readiness Conference • Ozobot Training <p>Student Events:</p> <ul style="list-style-type: none"> • Blue Planet Jobs: Careers in Water • Careers in Demand • d.Solve: Design Thinking for Educators • d.Solve: Student Showcase • Dream Big • HBCU College Fair • Manufacturing Day • Pathways to Apprenticeship - Summer Program • STEM Camp <p>Family Events:</p> <ul style="list-style-type: none"> • Dream Big
	<p>Tuition: No cost per student</p> <p>District retains student FTE funding</p>	<p>Tuition (ACE): 11th Grade - \$4,900 per student 12th Grade - \$4,900 per student *13th Grade - \$4,900 per student</p> <p>Tuition (OTEC): 11th Grade - \$550 per student 12th Grade - \$550 per student *13th Grade - \$5,900 per student</p> <p>*Receives bonus FTE while student attends OCC full-time</p>	<p>Tuition: \$6,450 grades K-8 (in-county) \$6,700 grades 9-12 (in-county)</p> <p>\$6,650 grades K-8 (out-of-county) \$6,900 grades 9-12 (out-of-county)</p>	<p>Tuition: Cost varies by program.</p>

Career Readiness

Benefit to Districts

- **149,841 students** in Oakland County used the Xello system provided by Oakland Schools to expand their career and college readiness.
- **Over 400 high school students and 75 educator/mentors formed 16 teams**, which competed in three tournaments during the 25th season of OCCRA (Oakland County Competitive Robotics Association). In addition, 32 county middle school teams competed in six tournaments during the sixth season of OCCRA FTC (FIRST Tech Challenge).
- **979 students** participated in Manufacturing Day, a celebration of modern manufacturing meant to inspire the next generation of manufacturers.
- **38 students** were acknowledged for outstanding technical achievement at the CTE Student Recognition ceremony.
- **889 educators** from across Oakland County participated in **35 Educator Events**, spending a day visiting local employers, discussing industry trends and collaborating on classroom best practices to ensure students are college and career ready.



A variety of Student Services efforts **saved districts \$32,959,647**

Saving Districts Money

Students attend a technical campus for a half day at no charge to their local districts. By sending their students to the Oakland Schools Technical Campuses, districts saved **\$27,038,160** during the 2024-2025 school year.

This was done when Oakland Schools:

- distributed **\$3.088 million** from the countywide vocational millage to the 28 local school districts to support personnel and other costs of delivering CTE programs and career development activities.
- reimbursed districts **\$1,800,000** in 2024-2025, covering 100% of the cost for transporting students to the Oakland Schools Technical Campuses.
- offered professional development and student enrichment opportunities for the 28 districts, providing a value of **\$410,425**.
- purchased Xello, an online career and college readiness management system, for regional use by 28 districts and four public school academies, with a value of **\$351,662**.
- CDX Automotive software was distributed to six high schools in five districts, providing a value of **\$31,400**.
- purchased Pathful Connect, an online software platform that allows students, parents and teachers to learn about potential careers by virtually connecting with experts from hundreds of industries for regional use by high schools and middle schools in 26 districts and three public school academies, providing a value of **\$240,000**.

Oakland Schools STEM

Oakland Schools STEM (Science, Technology, Engineering and Math) is a leveraged resource that engages students and educators across Oakland County in all STEM content areas; developing technical literacy and learning agility while empowering a STEM ready workforce by accumulating STEM career awareness, exploration and preparedness.

2024-25 was the fourth year for the Oakland Schools **STEMi**, a mobile innovation station designed to drive career readiness in Oakland County by sparking student interest in STEM careers. During the 2024-2025 school year, the **STEMi** hosted over 13,000 visitors, including:

- **5,277 students** in grades K-5
- **6,654 students** in grades 6-8
- **663 students** in grades 9-12
- **588 educators**, district Board of Education officials and community business leaders

We also partnered with Cranbrook Institute of Science for a fourth summer, providing robotics, gaming and media programming activities for an additional 30 Oakland County elementary students.

Oakland Schools STEM continues to facilitate the integration of STEM technologies in district classrooms throughout the county, offering the STEM checkout system known as **STEMco**.

231 educators utilized the **STEMco** system during the 2024-2025 school year, with over 750 **STEMco** equipment checkouts resulting in over 30,000 unique student STEM learning experiences.

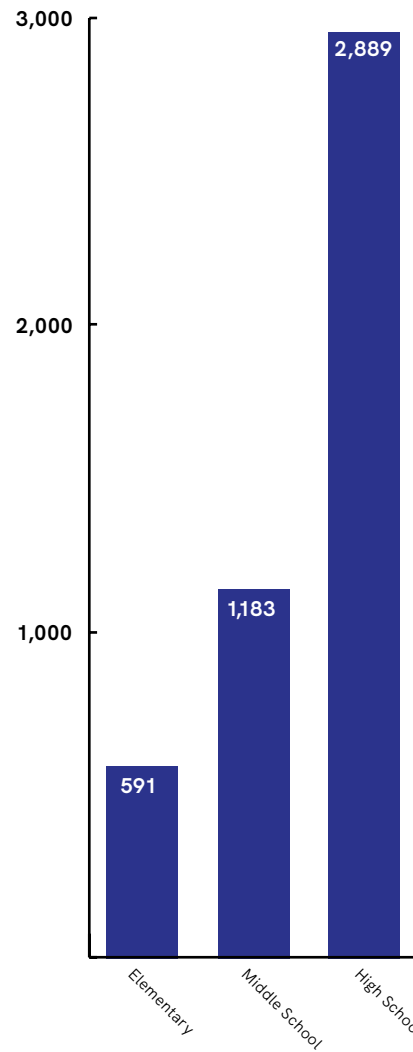
Career Readiness

The Oakland Schools Career Readiness team provides opportunities for students, parents and educators to engage with and learn from local business and industry leaders and post-secondary communities.

Educator Experiences by Event

Amazing Shake Training	30
Career Day at Detroit Boat Show	20
Career Development Practitioner	298
Career Readiness District Contact	114
Collaborative Career Readiness PL Series	95
Curriculum Connections: Educators in Industry at ABB	16
Curriculum Connections: MiStem Educators in Industry	33
d.Solve: Design Thinking for Educators	15
d.Solve: Student Showcase	15
HBCU College Fair	25
Oakland Career Readiness Conference	196
Ozobot Training	32
Total	889

Student Experiences by Grade Band



Student Experiences by Event*

Blue Planet Jobs: Careers in Water	200
Careers in Demand	540
d.Solve: Design Thinking for Educators	1,800
d.Solve: Student Showcase	200
Dream Big	244
HBCU College Fair	662
Manufacturing Day	979
Pathways to Apprenticeship - Summer Program	8
STEM Camp	30
Total	4,663

Career and Technical Education

Oakland Schools Technical Campuses (OSTC)

Oakland Schools Technical Campus Enrollment		
District	Sem 1	Sem 2
Avondale	69	65
Berkley	108	103
Birmingham	40	36
Bloomfield Hills	41	38
Brandon	101	95
Clarenceville	28	25
Clarkston	169	166
Clawson	52	54
Farmington	67	62
Ferndale	87	84
Hazel Park	45	41
Holly	93	86
Huron Valley	196	190
Lake Orion	138	125
Lamphere	42	41
Madison	5	5
Novi	33	33
Oak Park	38	36
Oxford	114	105
Pontiac	99	93
Rochester	189	177
Royal Oak	65	64
South Lyon	146	144
Southfield	112	105
Troy	104	101
Walled Lake	231	220
Waterford	188	180
West Bloomfield	64	60
NonPublic Schools	13	13
Public School Academies	36	34
Semester Totals	2713	2581

Providing funding for districts while increasing student achievement



4,322

industry-recognized certifications/licenses earned.



99.8%

students who participated in at least one Workbased Learning experience.



210

students participated in the ninth year of the Oakland Technical Early College.



\$27,000

in scholarships earned by 20 district students through the OSEF Scholarships for Success program.

OSTC Students earned industry-recognized certifications

- AHA - BLS Healthcare Provider CPR
- ASE - Brakes
- ASE - Maintenance and Light Repair
- ASE - Painting and Refinishing
- Automotive Lift Institute-Lifting It Right
- AWS-SENSE Level I Entry Welder - GTAW
- AWS-SENSE Level I Entry Welder - SMAW
- AWS-Welding Fundamentals I - Certificate
- Career Safe - OSHA 10
- Career Safe - OSHA 30
- Carpenters International Training Fund-CITF-Level 3
- CASE - Agriculture, Food, Natural Resources
- Certiport - Communication Skills for Business
- Certiport - Entrepreneurship and Small Business
- Certus - S/P2 Automotive Service Pollution Prev
- Certus - S/P2 Automotive Service Safety
- Certus - S/P2 Collision Repair Safety
- Cisco - CCST-Cybersecurity
- CPCT/A - Patient Care Technician
- Energy Industry Fundamentals
- Express - Career Preparedness Certification
- FANUC - Level 1 Robot Operator - Handling Tools
- IT Specialist - Device Configuration and Management
- IT Specialist - HTML and CSS
- IT Specialist - Java
- IT Specialist - Networking
- Narcan - Naloxone Certification
- NHA - CCMA Certified Medical Assistant
- NHA - CPCT/A Patient Care Tech
- NRF - Customer Service and Sales
- Precision - Digital Media I
- Precision - Graphic Print Design 1
- RedCross - CPR AED First Aid
- SACA - C-101 Associate I - Basic Operations
- ServSafe - Allergens
- ServSafe - Food Handler
- ServSafe - Food Protection Manager
- Solidworks - CSWA - Mechanical Design
- State of Michigan - Certified Nurse Aide
- Vector - Email and Messaging Safety

Accelerated College Experience (Oakland ACE)

Benefit to Districts

Oakland ACE is a Michigan Department of Education (MDE) approved Early Middle College program that creates a leveraged partnership with Oakland Community College (OCC) and Lawrence Technological University (LTU), saving districts from having to negotiate their own agreements and eliminating duplicative overhead costs.

Tuition has remained the same throughout the twelve-year history of the program, continuing to make the program affordable for districts. The additional funding received by the district in the student's third year helps defray the cost of the first two.

Students enrolled in the three-year Oakland ACE program agree to an additional year of high school but spend that final year exclusively at OCC or LTU completing their graduation requirements.

Oakland ACE students have some of the highest achievement rates in the state. Our staff provides essential support for student success in college classes through weekly Seminar Support classes led by licensed counseling staff who:

- deliver instruction in the required career and college readiness curriculum
- facilitate OCC English and Math placement testing
- monitor student progress in their OCC courses
- provide individualized guidance on college coursework, college search, college applications, credit transfers and financial aid
- manage all communications with OCC, including student registration, class schedules and invoicing
- supply, support and collect Chromebook computers
- provide textbooks and other required course materials

Oakland ACE students take college classes on a college campus, taught by college instructors alongside college students, with the opportunity to earn up to 62 college credits.

Oakland ACE students also work towards the Michigan Early Middle College Association (MEMCA) certification by engaging in a minimum of 40 hours of career exploration, job shadowing, internship or clinical experiences, maintaining their MDE “on-time” graduation status.

Student Achievement

- **174** students from **20** Oakland County districts
- **3.26** GPA in Oakland Community College courses
- **62.5** college credits earned on average
- **90%** of students earned a C- or better in their postsecondary courses.
- **45%** of Year 13 students graduated with Honors from OCC
- **100%** earned their MEMCA certification
- **80%** moved on to a four-year college

Saving Families Money



Estimated cost for tuition, fees and textbooks for an **associate degree at Oakland Community College:**

\$9,760

Total cost to families with students enrolled at Oakland Community College through ACE:

\$0

Virtual Learning Academy Consortium (VLAC)

The Virtual Learning Academy Consortium (VLAC) is a full-time virtual learning program offering districts a 100% online option for their students. K-8 students work from home with a family Learning Guide (a parent or caregiver) and a full-time state-certified Oakland Schools teacher. Students in grades K-12 choose from a robust menu of high interest core and elective courses with an Oakland Schools mentor teacher who supports their virtual learning by monitoring their progress and conducting weekly check-ins.

Benefit to Districts

- Monitor student progress and performance and devise strategic interventions utilizing i-Ready diagnostics, course grades, lesson pacing, and state assessment data
- VLAC staff and teachers actively communicate with district contacts and VLAC families regarding student progress and performance
- VLAC Special Populations Consultant provides data and lends expertise to IEP and 504 teams
- Provide Teacher of Record and Mentor Teachers
- Sending school staff has online access to view student schedules and marks in MISTAR
- Facilitate pupil accounting two-way interactions and communicate outcomes to districts
- Coordinate and host state testing for grades 3-11
- Supply technology packages including Chromebook laptop (K-12), printers (K-5) and internet hotspot (K-12)

- Offer technology support through the Oakland Schools Service Desk
- Deliver data to primary district contacts for Count Day, TSDL and REP reporting
- Initiate student Educational Development Plans (EDP) using Xello

Student Achievement

- **572** students enrolled in VLAC across nine counties.

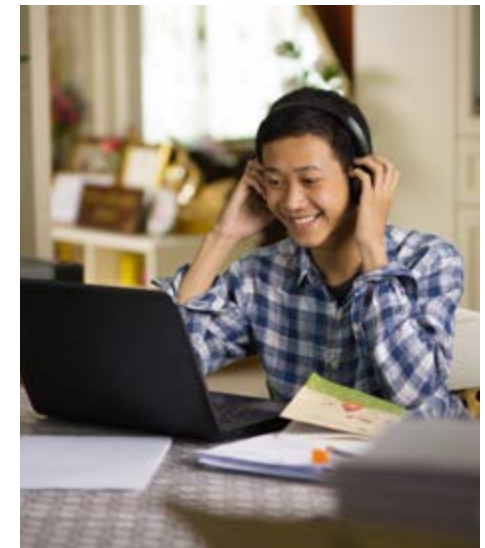
i-Ready: % of students on or above Grade Level		
Grade	Reading	Math
K	80%	80%
1	78%	67%
2	55%	89%
3	83%	61%
4	67%	61%
5	34%	56%
6	53%	52%
7	43%	34%
8	47%	53%
9	35%	50%
10	39%	37%
11	29%	27%
12	28%	20%

Oakland County District Enrollment	
District	2024-2025
Avondale	57
Berkley	21
Birmingham	5
Bloomfield Hills	56
Brandon	7
Ferndale	1
Huron Valley	9
Lake Orion	5
Madison	36
Novi	1
Pontiac	107
Rochester	10
Royal Oak	17
South Lyon	6
Southfield	6
Troy	14
Walled Lake	96
Waterford	37
West Bloomfield	3
Grand Total	494

2024-2025 Enrollment	
Grade	Total
K	6
1	9
2	10
3	18
4	23
5	31
6	48
7	57
8	89
9	64
10	68
11	87
12	62
Total	572

2024-2025 Enrollment	
County	Total
Genesee	17
Ingham	15
Lapeer	15
Oakland	494
Washtenaw	10
Wayne	21
Grand Total	572

VLAC is a cost recovery program funded exclusively through district tuition. No Oakland Schools funds, millages, or Act 18 funds contribute to the VLAC budget.



Special Populations Compliance

The Special Populations Compliance Unit provides resources and support that empower districts in ensuring compliant practices for the delivery of free and appropriate public education (FAPE) in the Least Restrictive Environment (LRE) to students with disabilities in the 28 local school districts and 23 public school academies in Oakland County.

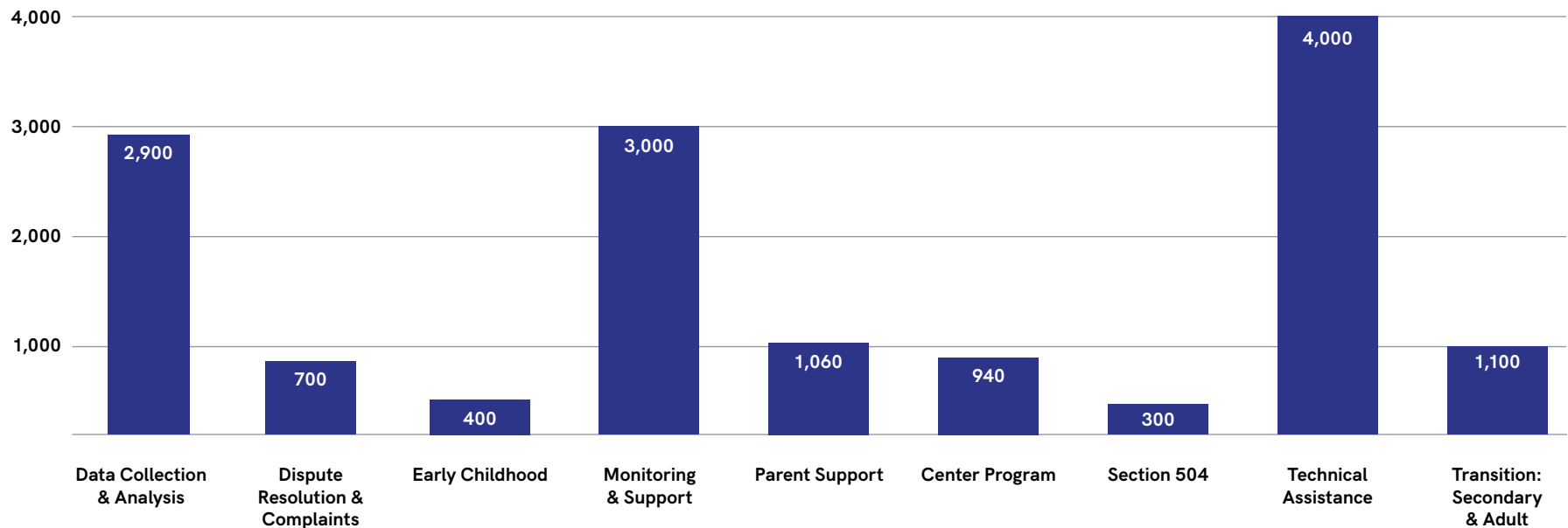
The Compliance Unit creates a cost benefit for districts through direct and consultative support to ensure understanding and provision of the special education rules and regulations to our students with IEPs. Assistance is provided via in-person and virtual training, consultation, and technical assistance with district staff using multiple County, State and Federal guidance documents and resources.

In addition, the Compliance Unit assists parents to help them understand their child's rights and procedural safeguards. This may include assistance with the dispute resolution process to ensure students are receiving a FAPE in the LRE and to maintain productive school and family relationships.

Facts:

- The IEP Coach Community of Practice builds district capacity to implement compliant practices by supporting district leaders.
- Monthly county-wide Parent Advisory Committee meetings and training opportunities are provided.
- Provided multiple Secondary and Adult Transition professional learning events supporting student preparation for living, learning, and working.
- The Oakland Schools Early Childhood Special Education (ECSE) Conference, Community of Practice meetings, and several professional learning opportunities were provided to support district staff in improving services to children and families.
- Coordinated the processing of 204 integrated and separate center program referrals.
- Provided on-demand access to on-site professional learning, virtual learning materials, and guidance resources.
- Provided General Supervision Systems intensive support, training, and guidance to school districts.

Compliance Hours of Support



Special Populations Capacity Building

The Special Populations (SP) Capacity Building Unit provides a robust continuum of high-quality, centralized, and customized professional learning opportunities for special educators and administrators. Our events are designed to help local districts and public school academies build the capacity needed to deliver effective, evidence-based instruction and support services to students with IEPs. We aim to increase student achievement through a combination of professional learning and support for critical implementation strategies in the field.

Customized professional learning events are delivered by Oakland Schools consultants onsite at the local district/public

school academies. Topics, audience, and schedule are selected by the district administrator, with offerings being further grounded in data and practices specific to the district/PSA. This option also eliminates substitute and mileage costs to districts.

In addition to offering professional learning opportunities, SP Capacity Building consultants add further cost benefit to local districts by facilitating mental health consultations, augmentative alternative communication and assistive technology, and facilitated problem-solving support for our most complex students in the county at no cost to our districts or families.

Centralized and Customized Professional Learning Events

Equity of Opportunity

- Approximately **4,640** educators served across all disciplines
- Over **141** centralized professional learning events held at Oakland Schools provided over **274** days (in-person, hybrid, and virtual format)

Cost Efficiency

- Access to national speakers at subsidized rates for Oakland County special education staff
- **\$49,495** in substitute reimbursement to offset cost to districts
- Unlimited access to OS consultants with a wide variety of expertise at **no cost**

Reducing Isolation and Promoting Retention in the Field

- Networking with other educators to problem solve, collaborate and build relationships

Intentional Design

- **Over 20** different categories of professional learning supported
- Embedded PL is designed with scope and sequence to build skills over time
- Maximizing and prioritizing time spent with educators to produce greatest impact on student achievement and outcomes

Customization

- **101 requests** in 2024-2025 to **27** districts and public school academies at **no cost**

Services for Students with Complex Needs

Aspire Program

- **19 students** supported from **13 resident/operating districts**; **104 days** of partial hospitalization/outpatient services; **22 days** of inpatient hospitalization; **697 outpatient services provided**, **5 agency partnerships**, **ZERO cost to districts and families**.

Psychiatric Consultation

- **5 consultations from 6 local districts/PSAs**; Average cost of psychiatric consultation in the private sector- **\$1200-\$2000**, **ZERO cost** to our districts/families

Student Problem Solving Team Intervention

- **29 district teams from 14 districts** supported through Student Problem Solving

Augmentative Alternative Communication and Assistive Technology

- **3,012 students** with AAC devices for communication and **59 students** with Orthopedic Impairments for AT to access the curriculum

Center Program Liaisons

- **9 Oakland Schools consultants** act as liaisons to our center programs across the county, building capacity with staff, problem-solving, and sharing resources

Special Populations Materials Center

The Materials Center (MC), part of Oakland Schools Department of Special Populations, provides materials and services to the districts and public school academies of Oakland County on behalf of students with low incidence disabilities. The Materials Center researches, locates, evaluates and procures appropriate assistive technology, instructional materials and alternate-format textbooks to meet the needs of students who have an Individualized Educational Program (IEP).

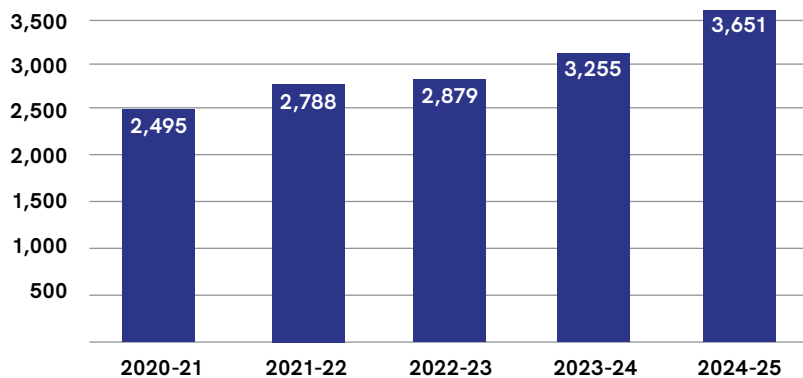
The Materials Center creates cost benefit by utilizing volume purchasing power using existing cooperative bids, and by initiating Invitations for Bids (IFBs) and Requests for Proposals (RFPs). Inventory is managed, tracked and reused allowing for the responsible use of resources across all districts.

In addition to providing materials, the Materials Center offers a comprehensive customer service system to support internal and district staff in the use of the materials provided. Support is offered in the form of set-up, staff training and after-delivery troubleshooting, maintenance, repair and technical assistance.

During the 2024-2025 school year, the Materials Center:

- Provided materials to each of Oakland County's **28 public school** districts at a value of **\$5,866,735**.
- Processed over **2,000 new requests** for student materials constituting **7,161 individual items**
- Provided **155 items to 24 students in 6 public school academies** at a value of **\$45,357**
- Provided hearing assistive technology to **27 students** on 504 plans at a value of approximately **\$16,000** on a cost-recovery basis
- Processed nearly **150 requests for the loan of nearly 30 assessment and professional resource items** to district staff at a value of over **\$300,000**
- Responded to over **2,000 requests for technical support and repair**

Number of Students Served



District	2022-2023		2023-2024		2024-2025	
	Students Served	Value of Materials	Students Served	Value of Materials	Students Served	Value of Materials
Avondale	88	\$138,529	114	\$163,177	127	\$160,412
Berkley	40	64,680	77	124,610	100	169,914
Birmingham	122	147,924	131	156,496	150	198,513
Bloomfield	203	659,803	209	815,109	201	717,946
Brandon	15	40,419	20	39,906	22	41,568
Clarenceville	26	20,965	25	21,415	20	21,403
Clarkston	97	118,766	104	127,444	108	139,492
Clawson	46	69,471	42	51,561	48	67,470
Farmington	136	231,035	193	393,947	245	379,870
Ferndale	56	69,084	62	86,650	75	106,758
Hazel Park	67	84,309	96	128,276	132	222,573
Holly	46	58,036	50	53,534	59	86,293
Huron Valley	126	196,490	125	204,154	135	202,476
Lake Orion	105	167,934	120	176,842	140	182,853
Lamphere	78	103,811	87	73,753	99	114,951
Madison	30	38,865	43	43,216	38	40,188
Novi	82	160,849	92	198,188	109	203,437
Oak Park	41	43,803	52	83,061	54	82,379
Oxford	58	91,334	51	77,602	56	104,586
Pontiac	77	117,656	72	136,711	74	152,772
Rochester	286	356,978	286	335,221	302	382,177
Royal Oak	118	237,461	143	229,591	159	257,507
South Lyon	87	213,856	89	195,617	104	279,206
Southfield	131	161,843	159	140,172	172	193,085
Troy	177	315,440	202	525,077	230	419,306
Walled Lake	262	372,905	294	419,306	337	427,692
Waterford	190	286,738	216	354,370	248	376,480
West Blfld	64	95,146	81	99,395	83	90,071
PSAs	25	51,385	20	39,685	24	45,357
TOTAL	2,879	\$4,715,515	3,255	\$5,494,086	3,651	\$5,866,735
Cost/Student		\$1,638		\$1,688		\$1,607
Headcount	24,262		25,179		25,675	
% SE Students Served	11.9%		13%		14.2%	

*Detailed source data available upon request Source: Oakland Schools Materials Center KLAS Database Oakland Schools | Department of Special Populations 7.30.2025

Special Populations

Student Services for Low Incidence

Oakland Schools' Student Services for Low Incidence unit creates a cost benefit for districts which includes support of programming and services provisions for students with low-incidence disabilities birth-26 years of age. This is inclusive of Educational Audiologist, Orientation and Mobility Specialist, and Teacher Consultant services working in the local districts and PSAs to provide direct support to students, procurement and training in the use of assistive technology devices, evaluations and assessments, the provision of alternate text materials/technology and consultative services to parents, staff and students.

The Student Services for Low Incidence purpose statement is: “to provide collaborative consultations and specialized instruction for students with low-incidence disabilities to support equitable access.”

What we do:

- Teacher consultant services to students with IEPs within the Oakland Schools boundaries realized a savings to districts of **\$5,517,718.96**.
- Extended school year provided when required for students to make educational progress.
- **3,951 District Service Requests** (DSRs) were processed. See graph for number of requests per discipline.
- **28 public school districts** and **5 public school academies** were served.
- **95% of tax-levied Special Education funds** are directly distributed to Local Education Agencies (LEAs) providing districts with **over \$179.7 million** to offset Special Education costs.

Student Services for Low Incidence Service Requests for 2024-2025	
Service	Requests
Teacher Consultant - Visual Impairment	323
Teacher Consultant - Tramatic Brain Injury	31
Teacher Consultant - Deaf/Hard of Hearing	287
Specialist - Orientation & Mobility	119
Psychiatric	4
Facilitated Problem Solving	22
Evals - Visual Impairment	125
Evals - Orientation & Mobility	38
Evals - Deaf/Hard of Hearing	77
Evals - Audio	16
Center Placement - Separate	183
Center Placement - Integration	36
Augumentative / Alternative Communication	2,719
Assistive Technology Consideration	13
Assistive Technology	546
Aspire	21
Total	4,560



Truancy

If they don't go to school, children can't receive a comprehensive education with a multitude of specialized services to support their growth and learning.

That's why the Oakland Schools Truancy team promotes the three A's (Attendance, Attachment and Achievement), plus emphasizes early intervention.

There is also a special Back-to-School* program for middle school students, the Oakland County Truancy Task Force and court intervention, when needed. The Back-to-School program identifies and addresses the issues that may stand in the way of good school attendance for middle school students.

** The Back-to-School Program is a middle school truancy prevention program. Middle schools refer students who had poor attendance the previous year, but not necessarily truant, and we provide five liaison contractors who each work with five to seven school districts and meet with the students at school to find out what the attendance barriers are and try to help the students with strategies to overcome them. We focus on the 3 A's: attendance + attachment = achievement, and encourage districts to provide these students a caring adult.*



Number of Truancy Cases by District						
District	Truancy Cases			Back-to-School Students		
	2022-2023	2023-2024	2024-2025	2022-2023	2023-2024	2024-2025
Avondale	142	112	156	173	105	0
Berkley	10	12	16	36	86	59
Birmingham	3	3	9	0	0	0
Bloomfield Hills	10	13	13	15	107	8
Brandon	74	75	58	98	62	0
Clarenceville	0	1	1	0	0	0
Clarkston	116	145	112	89	114	46
Clawson	8	7	3	0	0	0
Farmington	25	16	104	215	199	45
Ferndale	45	103	143	55	124	0
Hazel Park	112	157	189	126	156	96
Holly	87	173	83	25	168	50
Huron Valley	59	72	44	96	123	152
Lake Orion	71	96	79	141	68	38
Lamphere	33	53	84	108	129	134
Madison	36	61	20	105	87	80
Novi	6	12	2	0	0	0
Oak Park	32	17	103	156	0	0
Oxford	70	86	76	68	63	26
Pontiac	367	449	456	120	81	0
Rochester	56	81	63	67	100	60
Royal Oak	41	42	24	24	23	39
South Lyon	28	15	79	48	52	134
Southfield	26	31	17	116	124	113
Troy	31	42	40	56	107	98
Walled Lake	74	77	48	162	200	201
Waterford	135	145	133	384	108	104
West Bloomfield	41	41	31	55	45	85
Total	1,738	2,137	2,186	2,538	2,431	1,568

2,186 truancy cases identified in 2024-2025

Professional Development

If Oakland Schools does not provide direct instruction to Oakland County students, how can we have a positive and continuing impact on improving student achievement? One of the most important ways we do this is by providing professional development in the form of classes, workshops and training to school staff. By providing teachers and other school employees with the tools and resources to help them sharpen their skills and deliver quality classroom instruction, we ultimately – and positively – impact student achievement.

Customized Professional Development 2024-2025		
District	Participants	Events
Avondale	1	5
Berkley	1	4
Birmingham	1	4
Bloomfield	1	7
Brandon	1	6
Clarenceville	1	6
Clarkston	1	7
Clawson	1	6
Farmington	1	8
Ferndale	1	6
Hazel Park	1	8
Holly	1	4
Huron Valley	1	5
Lake Orion	1	7
Lamphere	1	8
Madison	1	9
Novi	1	9
Oak Park	1	8
Oxford	1	4
Pontiac	1	5
Rochester	1	4
Royal Oak	1	8
South Lyon	1	8
Southfield	1	6
Troy	1	7
Walled Lake	1	6
Waterford	1	8
West Bloomfield	1	5
Total	28	178

Regional Professional Development 2024-2025							
District	SCECH Savings	Professional Learning - District Staff Attendance (Number)	Professional Learning - Events Attended (Number)	SCECH Hours (Number)	SCECH Participants	SWCEH Hours (Number)	SWCEH Participants
Avondale	\$1,240	374	117	944	124	201.5	28
Berkley	\$1,600	656	145	1509.75	160	140.75	26
Birmingham	\$1,680	323	104	1351.25	168	287.5	48
Bloomfield Hills	\$1,520	360	105	1232.25	152	217.25	41
Brandon	\$680	180	72	619	68	131.75	16
Clarenceville	\$580	144	65	680.5	58	63.5	10
Clarkston	\$1,420	508	130	1264	142	188.25	27
Clawson	\$530	125	60	677.75	53	53.5	10
Farmington	\$1,880	522	124	1367	188	378.5	64
Ferndale	\$860	312	119	692	86	103.5	14
Hazel Park	\$750	285	74	818.5	75	264.5	32
Holly	\$450	190	64	475.75	45	0	0
Huron Valley	\$1,390	383	112	957.75	139	284.5	47
Lake Orion	\$1,290	423	118	1104.75	129	199	26
Lamphere	\$0	242	98				
Madison	\$410	116	55	344.5	41	37.5	4
Novi	\$890	295	75	894	89	42	9
Oak Park	\$630	189	92	366.75	63	246.25	28
Oxford	\$870	366	113	642.5	87	115	23
Pontiac	\$1,490	294	98	1183.25	149	82.5	13
Rochester	\$2,790	805	159	2145.5	279	251	45
Royal Oak	\$1,400	473	149	1006.25	140	187	30
South Lyon	\$1,040	277	96	826.25	104	156.5	19
Southfield	\$1,310	258	89	1061.5	131	90	13
Troy	\$1,600	522	133	1292.25	160	188.5	35
Walled Lake	\$1,950	420	125	1483.25	195	233.75	41
Waterford	\$2,300	750	165	1860.75	230	421.75	60
West Bloomfield	\$880	428	118	857.75	88	162.5	162.5
TOTALS	\$33,430	10,220	2,974	27,658.75	3,343	4,728.25	871.50

Business Office Residency and Training Programs

Oakland Schools acknowledges the ongoing challenges faced by local districts in recruiting and retaining qualified professionals for key positions within their business offices. The intricacies of school funding underscore the critical need for individuals possessing the requisite knowledge and experience to navigate these complexities effectively.

To address the shortage of qualified candidates, we have developed a comprehensive two-year residency program. This initiative is providing four individuals with the opportunity to learn from seasoned professionals and intern across various districts. Concurrently, we host multiple training sessions over the two-year period, inviting participants from local districts to enhance their skills and capabilities.

Upon program completion, both residents and participants in the training sessions will be well-prepared to assume these demanding roles.

Regional Education Media Center (REMC)

The REMC Statewide SAVE (Schools Aggregated Volume in Education) Project is provided as a service of the 28 Regional Educational Media Centers of Michigan (REMCAM), including Oakland Schools/REMC 17. It is open to all Michigan schools. The Project provides large volume contracts for a variety of educational resources. Product categories include furniture; school and office supplies; software and digital services; and technology. By using REMC SAVE contracts, Michigan schools have saved more than \$1.4 billion since 1990. Every dollar saved through REMC SAVE today is one more dollar to invest in instruction tomorrow.

For more information about REMC Save, please contact the Digital Learning/Computer Science Consultant, Vinos Kassab at vinos.kassab@oakland.k12.mi.us.



Regional Educational Media Center Association (REMC) Statewide SAVE Project - Oakland County 2024-2025 Savings					
District	Quantity	Education List Price	REMC Save Sales	Savings	Percent Savings
Avondale	12,623	\$839,654	\$555,025	\$284,629	34%
Berkley	11,626	\$1,076,599	\$777,985	\$298,614	28%
Birmingham	28,953	\$1,796,430	\$1,185,429	\$611,001	34%
Bloomfield Hills	16,455	\$2,329,638	\$1,302,751	\$1,026,887	44%
Brandon	8,832	\$160,743	\$110,311	\$50,432	31%
Clarenceville	5,616	\$233,073	\$144,431	\$88,642	38%
Clarkston	24,552	\$1,097,264	\$601,380	\$495,884	45%
Clawson	1,533	\$182,801	\$106,309	\$76,492	42%
Farmington	20,560	\$837,229	\$545,167	\$292,062	35%
Ferndale	14,529	\$2,229,140	\$707,687	\$1,521,453	68%
Hazel Park	7,524	\$293,723	\$254,991	\$38,732	13%
Holly	8,893	\$1,337,215	\$796,290	\$540,925	40%
Huron Valley	10,056	\$179,435	\$107,334	\$72,101	40%
Lake Orion	23,786	\$8,986,422	\$3,829,741	\$5,156,681	57%
Lamphere	18,996	\$389,379	\$239,820	\$149,559	38%
Madison	1,307	\$94,549	\$74,680	\$19,869	21%
Novi	14,851	\$992,431	\$541,213	\$451,218	45%
Oak Park	6,444	\$92,937	\$66,018	\$26,919	29%
Oxford	13,779	\$432,211	\$244,511	\$187,700	43%
Pontiac	16,782	\$1,111,720	\$415,698	\$696,022	63%
Rochester	75,263	\$1,808,189	\$1,136,513	\$671,676	37%
Royal Oak	13,498	\$662,430	\$330,680	\$331,750	50%
South Lyon	47,052	\$5,067,007	\$3,132,700	\$1,934,307	38%
Southfield	9,490	\$581,139	\$312,770	\$268,369	46%
Troy	45,667	\$2,072,789	\$1,874,339	\$198,450	10%
Walled Lake	39,533	\$815,518	\$473,293	\$342,225	42%
Waterford	35,813	\$2,566,445	\$1,251,978	\$1,314,467	51%
West Bloomfield	12,663	\$2,076,499	\$942,720	\$1,133,779	55%
Oakland Schools	102,866	\$1,841,599	\$1,445,694	\$395,905	21%
REMC 17 Totals	649,542	\$42,184,208	\$23,507,458	\$18,676,750	44%

District and School Services

The District and School Services (DSS) Department is committed to serving all learners in Oakland County through a variety of means, including but not limited to: providing professional learning for educators, facilitating networking groups for educators, consulting with educational leaders, developing resources, advocating for Oakland County students at the state level, engaging the community in a variety of topics, and establishing consortium pricing and other cost savings for tools that districts need to support student learning. DSS is also focused on several large county-wide projects, such as the Literacy Essentials Oakland (LEO) project, Essential Practices in Instruction Capacity & Coherence (EPIC2) project, 31N Caring for Students and Trails Implementation, support of newcomer immigrant students, developmental screening for children, Birth-5, district mental health systems, and family engagement.

Unique Points of Customized Consultant Services by District - July 1, 2024 to June 30, 2025

District/PSA	Consultation	Direct Services	Professional Learning	Resource Development	Other	Total Services
Avondale School District	24	6	14	10	1	34
Berkley School District	17	2	18	9	2	30
Birmingham Public Schools	17	3	16	7	1	28
Bloomfield Hills Schools	10	5	13	4	1	25
Brandon School District in the Counties of Oakland and Lapeer	34	2	26	8	1	41
Clarenceville School District	22	5	18	8	1	32
Clarkston Community School District	19	3	14	11	2	32
Clawson Public Schools	14	5	12	4	1	27
Farmington Public School District	16	4	11	6	1	24
Ferndale Public Schools	23	6	24	11	1	40
Hazel Park, School District of the City of	21	5	15	9	1	28
Holly Area School District	20	6	12	8	1	32
Huron Valley Schools	11	4	10	5	1	22
Lake Orion Community Schools	7	4	6	3	1	17
Lamphere Public Schools	25	3	15	8	1	32
Madison District Public Schools	22	5	18	6	1	29
Novi Community School District	21	6	20	8	1	36
Oak Park Schools	10	6	10	3	1	20
Oxford Community Schools	20	4	15	9	1	30
Pontiac City School District	5	4	7	1	1	117
Rochester Community School District	31	5	27	13	1	51
Royal Oak Schools	26	4	22	11	1	40
South Lyon Community Schools	9	4	11	5	1	22
Southfield Public School District	20	4	17	5	1	30

District/PSA	Consultation	Direct Services	Professional Learning	Resource Development	Other	Total Services
Troy School District	18	6	17	7	1	31
Walled Lake Consolidated Schools	21	4	14	8	2	35
Waterford School District	27	3	21	6	1	35
West Bloomfield School District	21	6	16	7	1	36
AGBU Alex-Marie Manoogian School	4	0	7	2	0	9
Arts and Technology Academy of Pontiac	21	5	12	4	1	28
Bradford Academy	12	10	5	5	0	20
Crescent Academy	0	1	1	0	0	2
Dr. Joseph F. Pollack Academic Ctr. of Excellence	1	0	2	1	0	2
Faxon Language Immersion Academy	20	5	16	5	1	29
Flex High School of Pontiac	0	0	1	0	0	1
Four Corners Montessori Academy	1	0	1	0	0	2
Grand River Academy	1	0	2	0	0	2
Great Lakes Academy	3	1	3	1	0	4
Holly Academy	1	1	1	0	0	3
Keys Grace Academy	11	1	5	1	0	13
Kingsbury Country Day School	1	0	2	0	0	2
Laurus Academy	0	0	1	0	0	1
Momentum Academy	3	2	3	1	0	6
Oakland FlexTech High School	5	2	2	1	1	8
Oakside Prep Academy	0	1	1	0	0	2
Pontiac Academy for Excellence	5	4	7	1	1	11
Walton Charter Academy	0	0	1	0	0	1
Waterford Montessori Academy	2	0	2	0	0	3
Total Unique Points for 24-25	582	101	376	189	51	835

Aggregate Hours of Customized Consultant Services by District - July 1, 2024 to June 30, 2025

District/PSA	Hours
Avondale School District	769
Berkley School District	557
Birmingham Public Schools	278
Bloomfield Hills Schools	269
Brandon School District in the Counties of Oakland and Lapeer	817
Clarenceville School District	943
Clarkston Community School District	649
Clawson Public Schools	1398
Farmington Public School District	379
Ferndale Public Schools	797
Hazel Park, School District of the City of	773
Holly Area School District	413
Huron Valley Schools	644
Lake Orion Community Schools	215
Lamphere Public Schools	620
Madison District Public Schools	1046
Novi Community School District	799
Oak Park Schools	312
Oxford Community Schools	739
Pontiac City School District	1338
Rochester Community School District	508
Royal Oak Schools	597
South Lyon Community Schools	298
Southfield Public School District	706

District/PSA	Hours
Troy School District	581
Walled Lake Consolidated Schools	448
Waterford School District	853
West Bloomfield School District	562
AGBU Alex-Marie Manooogian School	95
Arts and Technology Academy of Pontiac	602
Bradford Academy	228
Crescent Academy	0
Dr. Joseph F. Pollack Academic Ctr. of Excellence	208
Faxon Language Immersion Academy	376
Flex High School of Pontiac (formerly Life Skills Center of Pontiac)	0
Four Corners Montessori Academy	1
Grand River Academy	1
Great Lakes Academy	228
Holly Academy	0
Keys Grace Academy	368
Kingsbury Country Day School	0
Laurus Academy	0
Momentum Academy	244
Oakland FlexTech High School	208
Oakside Prep Academy	0
Pontiac Academy for Excellence	50
Walton Charter Academy	0
Waterford Montessori Academy	3
Total Hours	20,920

In 2020, Educational Services staff began to use JIRA software (the same software program that our Technology Services department uses to organize service tickets) to document our services to local school districts and PSAs. We call this project JIRA OaSIS, which stands for Oakland Service Information System. The data you see represented in this table are the number of unique service requests and the hours logged for those requests, which have been provided to each Oakland County LEA District and PSA school. These service requests are divided into four service deliverable categories: consultation, direct service, professional learning, and resource development. These high-level data points help us understand the sense of volume of service that has been provided to each of our constituent districts, as well as the nature of the services we are providing. These data are self-reported.

COUNTYWIDE PROJECTS

Literacy Essentials Oakland (LEO 2.0)

The Literacy Essentials Oakland project supports early literacy coaching, leadership, and systems to ensure that district conditions of success are aligned with evidence-based practices. Our long-term goal is to ensure young learners read by grade 3 in every partner district. We work with district Literacy Leadership Teams and LEO coaches to support the conditions needed to support students in early literacy improvement. We are proud to continue our partnership with 19 districts and two charter schools.

Essential Practices in Instruction Capacity & Coherence (EPIC2)

Essential Practices in Instruction Capacity & Coherence (EPIC2) has been developed in response to declining performance from 3rd to 6th grade on the MATHEMATICS M-STEP. EPIC2 is a multi-year initiative designed to increase an organization's capacity to support effective practices leading to increased student outcomes in mathematics.

21 districts and 2 charter schools participate in focusing on three goals and intended outcomes for continuous improvement:

- Enhanced, equitable instructional practices grounded in research (focus grades 4-6 with emphasis on 6th grade)
- Increased confidence and efficacy of instructional leaders (both administrative and non-administrative)
- Increased district system coherence

31N Caring for Students/31P TRAILS Implementation

District and School Services facilitates state funding to increase the services within the school setting to support the mental health and social-emotional needs of students. Districts have the opportunity to request access to these grant funds through an application process. Currently, sixteen districts in Oakland County are approved to participate in the 31n(6) grant. The support that students receive under this grant includes universal socio-emotional screening, tier 2 therapeutic intervention, crisis response, additional tier 2 and 3 behavioral mental health interventions, care coordination, and mental health referrals. Additionally, District and School Services facilitates funding to districts to implement the TRAILS program (31p funding). This year, TRAILS trained 29 schools (at least one staff member, 129 staff total) in tier 1, 13 schools (at least one staff member, 23 staff) trained in tier 2, and no staff trained in tier 3. The opportunity to be a part of this grant continues to be open for other schools and districts into the coming school year.

Immigrant & Newcomer Student Services

Oakland Schools offers assistance in helping transition the immigrant student population by providing systemic consultation and coordination to the Immigrant community of students new to Oakland County. The goal is to increase school attendance and achievement while implementing an information and trauma-based service model to maximize student attendance, engagement, and achievement.

Some of the services being provided are:

- Coordinate services between community providers and local public school districts to effectively address the needs of all Newcomer Students and their families.
- Support local public school districts to develop programs that explicitly target immigrant and newcomer students.
- Professional Development on the immigration process, trauma, cultural norms, curriculum/instruction/assessment for newcomer students, and other support to schools as needed.
- Develop tools and resources to support districts in implementing new federal requirements related to immigrant students and families.

Developmental Screening

The Ages and Stages (ASQ)-3 developmental screening project invites parents and other caregivers to complete a brief questionnaire to determine if children from birth through age 5 are reaching developmental milestones as expected. This last calendar year, over 18,625 Ages and Stages Questionnaire (ASQ-3) and ASQ-SE2 developmental screenings were completed for children in Oakland County. Across all age groups, 2000 children were identified as needing further

assessment for additional support or services due to a developmental concern. In the birth to five years age group, 11% of screening results indicated the child was not on track and may need developmental support. To date, Help Me Grow Oakland has provided **189,666 screens**, surpassing every other developmental screening effort in the world. In addition, Help Me Grow care coordinators followed up with 10,545 additional parents of young children to provide information, support, and referrals through the Help Me Grow phone line.

GSRP Continuous Improvement Goals

The GSRP Oakland Schools Data Analysis Team advanced three continuous quality improvement goals in 2024–25, focusing on reading, emotional development, and math. The “February Frost: Phonological Fun!” challenge provided PreK teachers with engaging weekly phonological awareness activities, culminating in a countywide resource. Literacy efforts were further strengthened through a special grant that equipped all 144 new GSRP classrooms with a 128-book Classroom Lending Library set, including fiction, nonfiction, poetry, and conversation-starter prompts to foster school-home connections. Emotional development was supported through the distribution of the “Fun with Feelings” card deck to every GSRP family and teacher, helping children name, understand, and regulate emotions. To elevate math, our five-week “Math Challenge” engaged hundreds of educators, with results showing significant increases in daily math planning, teacher confidence, and student enthusiasm. Children became more curious, confident, and joyful about math in everyday moments. In addition, our April PreK Conference, Teach. Love. Inspire. Repeat. brought nearly 400 educators together for authentic teacher-led breakout sessions, a keynote, and a moving StoryJam. Participants left with renewed purpose, practical tools, and deep affirmation of the vital impact of their profession.

Strengthening School Mental Health and Family Engagement Community of Practice

With the support of a \$500,000 grant from the Michigan Health Endowment Fund, Oakland Schools is working with 6 districts on a 2-year project to examine and develop stronger systems around mental health and family engagement. In this second year, districts continued their work as a community of practice by wrapping up the final components of the School Mental Health Quality Assessment Tool, including a focus on sustainability of their efforts. We have expanded this offering through the approval of the Health Fund to include a third year of support for implementation available to all districts per the districts’ request. Additionally, this expansion will look to add in further pilot Family Engagement work with two of our districts.

Consultation

The District and School Services consultant team works closely with educational leaders across the county as they plan appropriate support for their district or school. Some outcomes of this consulting work include:

- Student-centered Instruction
- Leadership and Team Development
- Continuous Improvement Planning, including transitioning to the Michigan Integrated Continuous Improvement Process and establishing data systems
- Federal and State Programming/Funding Alignment
- Development of Counseling Supports for Students
- Curriculum Adoptions Processes
- Curriculum Development
- Diversity and Equity
- Whole Child Well-Being and Mental Health Systems
- School Safety Systems Development and Crisis Preparedness/Response
- Positive Behavioral Interventions and Supports (PBIS) Systems
- Child Development Screening and Assessment Tools
- Preschool Programs, Lending Libraries, and Classroom Quality Coaching
- Early Childhood Mental Health, Inclusion, Trauma-Informed Practice, and Challenging Behaviors
- Early Intervention Teaming, Service Delivery Models, Regulatory Compliance, and Workload/Caseload
- MTSS
- Financial Reporting and Specialist Coordination
- Regulatory/Program Compliance and Evidence-Based Practices for Early Intervention and English Learners
- Providing support with educational technology tools and digital platforms.
- Michigan Seal of Biliteracy implementation
- Project-Based Learning and Design Thinking
- New Teacher Programs
- Illuminate DnA
- Student Assessment

Consultation Ed Services Categories
504
Assistive Technology/AAC
Attendance & Truancy
Career & Technical Education
Career Readiness
Communication, Speech & Language
Continuous School Improvement
Curriculum Development
Data & Research
Digital Learning
Early Childhood
English Language Arts/Literacy
English Learners/Title III
Equity, Diversity & Inclusion
Family & Community Engagement
Fine Arts
Health Education
Health Services
Homeless Student Services
IEP Development & Implementation
Immigrant Student Services
Instruction
Leadership Development
Mathematics
Mental Health Support
Multi-Tiered System of Support
New Teacher Support
PBIS/Discipline
Program Evaluation
School Counseling
School Safety
Science
Social Studies
Social Work
Specially Designed Instruction
State & Federal Programs
Student Assessment
World Languages

Professional Learning for Educators

The DSS team develops and facilitates regional professional learning and customizes professional learning for individual districts by co-planning and facilitating in-district professional learning for PLCs, teams, and district PD days. During the 2024-2025 school year, DSS hosted many regional professional learning events with **5,934** participants. A few examples of these professional learning events include:

- PREPaRE Workshop 1 and 2 modules for school safety and preparedness
- I Love U Guys training for emergency response and reunification
- Positive Behavioral Intervention Supports (PBIS)
- Secondary Multi-Tiered Systems of Support (MTSS)
- 31n Jumpstart for grant participants
- Restorative Practices
- Trauma Informed Classrooms/Educators
- Inclusive Instructional Practices
- Implicit Bias training
- CAREERversations: Math, Science, Social Studies, and Literacy
- English Learners: Cultural Difference or Disability
- K-5 Social Studies Inquiry Design Lab
- Workshop for Writers: weekly PLC supporting secondary teachers
- EduProtocols - Lesson Frames to Engage Students in Active Learning
- World Language Virtual Drop-Ins (6 sessions on topics including Engagement, Comprehensible Input Strategies, Teacher Effectiveness in WL, and the 3 Modes of Communication)
- Next Generation Science Exemplar Project (NGSx) workshop
- OpenSciEd Field Study
- A Crash Course for Administrators to support their district science vision
- Computer Science Fundamentals Workshops for K-8 educators
- Mathematics Learning for All
- K-12 Project-Based Learning Design
- Leading for English Learners
- ARTS FIRST! Professional development featuring a plethora of best practice workshops
- Adaptive Arts
- HighScope Curriculum, assessment, and conflict resolution

- Every Family Matters - Family Engagement in Early Childhood
- Science, Technology, Art, and Math (STEAM) in Preschool
- Building Connections with Young Children: Interactions and Environment
- Creating a Trauma Sensitive Preschool Classroom
- Preschool Inclusion
- New GSRP Administrator training
- HighScope Preschool Curriculum Certification and HighScope Trainer Certification
- HOPE (Healthy Outcomes from Positive Experiences) is an early childhood resiliency model
- Equitable Practices in Grading
- Data Visualization
- Planning for Excellence (Monthly Continuous Improvement Series)
- Teaching for English Learners
- Implementation Excellence (supporting Monitoring and Adjusting Programs)
- New Principal Leadership Institute
- Aspiring Principals Academy

The DSS team worked closely with districts to develop professional learning opportunities that were tied to their strategic goals.

A few examples of these learning experiences include:

- (Literacy Essential Oakland) Literacy Consultant co-designed coaching and inquiry cycles for Literacy Leadership Teams to focus on Essential Instructional Practices in Early Literacy
- Work with the Heritage and World Languages Consultant on a 3-part series on Planning, Teaching, and Assessing for Proficiency in the World Language Classroom.
- District-specific work around designing and implementing Project-Based Learning experiences for students. For example, developing an 8th-grade US History/ELA course using the PBL Framework.
- Support for teachers and students through writing, and a pilot program was created to investigate appropriate, trauma-informed social-emotional learning connections to writing.
- Supporting African American males by engaging mentors/mentees in academic practices in literacy and numeracy to identify themselves as competent learners.
- Positive Behavioral Intervention Support (PBIS) systems and evaluation
- Cultivating Community Through Trauma-Informed Restorative Practices
- Great Start Readiness Program (GSRP) classrooms across the county have identified a continuous improvement goal regarding children's emotional development. The Emotional Development Project provides professional learning and resources for teaching teams to focus on children's ability to name and express feelings.
- Social Emotional Learning (SEL)



Networking Groups for Educators

District and School Services supports groups of educators in networking with peers across the county through regularly scheduled facilitated meetings. Networking groups have been designed to meet the needs of central office leaders, principals, district assessment leaders, district ESL leaders, new teachers, and content area specialists (mathematics, literacy, social studies, science, fine arts, world language, and health education), to name a few. **A few examples of the impact of networking groups include:**

- **Early Intervention Community of Practice:** Brings early interventionists in Oakland County responsible for implementing Early On (Part C of IDEA) together in a collective inquiry regarding the current reality and best practice. The COP creates opportunities for early interventionists to enhance their skill set through peer-to-peer learning and technical assistance and address potential compliance concerns.
- **English Learner Network:** The EL Network discusses changes to the rules and regulations regarding ELD/Title III Programming, Instruction, and Assessment; develops strategic plans for implementing these changes; fosters alliances between districts to share resources, thinking, and professional learning; and engages in shared professional learning to ensure high-quality educational opportunities for all English Learners. The EL Network met in person for two full days in the 2024-2025 school year.
- **Education Technology Leadership Team:** The Educational Technology Leadership Team is made up of representatives from each of the Oakland County districts. It serves as an information network for educational technology initiatives and resources, and focuses on



aspects of educational technology and teaching and learning that can be leveraged to improve programs and student achievement.

- **Literacy Leaders Network:** This group is all about keeping a finger on the pulse of literacy education in Oakland County. Made up of K-12 literacy leaders from the districts and the Oakland Schools Literacy Team, this group meets several times a year to discuss literacy education needs and priorities so we can address them moving forward; develop alliances between districts to share resources, thinking, and possibly professional learning and future planning; and engage in professional learning together. This year, we continued to support this group via synchronous online meetings as well as creating on-your-own versions of the meeting for those who were unable to attend.
- **Principal Learning Network:** The Principals' Learning Network is an interactive professional development and networking series designed to support building administrators in fostering collaboration, growth, and problem-solving among peers in similar roles.
- **World Language Advisory Council and Michigan World Languages Consortium:** The Oakland World Language Advisory Council (OWLAC) met four times during the 2024-2025 school year (3 virtual meetings, 1 in-person). The Michigan World Languages Consortium connects World Language teachers across Michigan virtually three times a year. During 2024-2025, both groups engaged in collaborative learning on advocacy, teaching grammar in context, and reflection and feedback.
- **Math Leadership Team (MLT):** a county-wide group of district-level mathematics leaders coming together to learn, network,

and share innovative work happening in their districts. The collaborative nature of the group enhances practice as we learn from and with each other. Representatives also serve as a conduit of information between Oakland Schools and their districts.

- **Job Embedded Professional Learning (JEPL) Network:** This network provides an opportunity for instructional leaders across Oakland County and its surrounding communities to learn together and network around how to design and facilitate professional learning. This year, we particularly focused on leadership through change and facilitating in online and hybrid environments.
- **School Counselor Leadership Councils:** High School and Middle School counselor leaders were invited to develop the purpose, vision, and priorities for this group, which intends to support resource development, advocacy, and leadership efforts on behalf of the 300+ school counselors in Oakland County.
- **Justice, Equity, Diversity, and Inclusion (JEDI Council):** This networking group supports district-level equity leaders to address the growing need to address diversity issues within districts. This year, monthly newsletters and lunch and learn sessions supported educators with continuing their work around the support of underserved populations in Oakland County.
- **District Mental Health Leaders:** This networking group supports district-level leadership for mental health and well-being by building an understanding of the grants allocated to support mental health, trends in school-based mental health supports, and systems development to support mental health.
- **3P Leadership Network:** Teacher leaders came together to think deeply about project-based, problem-based, and place-based learning in their contexts. Leaders work collaboratively to plan 3P experiences for educators and students in their district.
- **Great Start Readiness Program Partner Meetings:** This networking group brings together all sub-recipient GSRP leaders to share state and local administrative updates, collaboratively problem solve, and develop systems of support.
- **Great Start Readiness Director/New Administrator Meetings:** These networking groups bring together GSRP administrators to successfully complete tasks associated with GSRP implementation. Participants set individual goals, engage in peer-to-peer learning, receive technical assistance/coaching as needed, and identify monthly topics of interest.
- **Oakland County Research, Evaluation & Assessment Council:** This group of data & assessment leaders from each district meets monthly to discuss updates and best practices in state assessment, as well as data collection, analysis, and school improvement.
- **Instructional Leadership Network:** This group of central office curriculum directors and coordinators is designated by the TLC member of each Oakland County LEA. This group meets

monthly to learn, discuss, and network regarding district-wide implementation of various initiatives, including MTSS, Social & Emotional Learning, Disciplinary Literacy, Curriculum Alignment, and High-Quality Assessment Practices.

- **Teaching & Learning Council:** This group of central office teaching & learning leaders is designated by each local Oakland County Superintendent. The Teaching and Learning Council comes together to leverage a collective expertise that challenges thinking, identifies opportunities, develops solutions, and takes action to advocate for inclusive and equitable learning.

Resource Development

The District and School Services team is committed to developing resources that support student learning across the state. **Some of these resources include:**

- **Kindergarten Transition Booklet:** Early Childhood created a booklet to support children and their families as they transition from preschool to kindergarten. The booklet has been disseminated to GSRP families and to others across the county by community-based partners.
- **Immigration Rights Michigan Schools Need to Know:** The Oakland Schools ELD team, in collaboration with other statewide EL leaders, developed this resource to help educators across the school system understand their role and responsibilities related to immigrant students and families. It includes updates to recent federal requirements and links to numerous resources.
- **Michigan Citizenship Collaborative Curriculum (MC3) Revision for 8th Grade U.S. History:** The OS social studies team revised curriculum content for grades 3 through 5, including unit calendars, unit overviews, standards alignment, and lesson plans. These units, including the previously revised 8th-grade units, are inquiry-based, aligned to Michigan Standards, and provide a full set of instructional materials for teachers to support rich, deep learning in social studies.
- **Instructional Resource Evaluation Tool for World Languages:** Jennifer Howe, Heritage and World Languages Consultant, created this document to assist districts in evaluating new resources for language learning according to the Michigan World Language Standards and Benchmarks, ACTFL's Core Practices for World Language Learning, and instructional technology.
- **Middle School and High School Social Emotional Seminar Lessons:** Grounded in the Michigan Model for Health curriculum and including components of Restorative Practices, these lessons have been developed to support social emotional growth and development. Lessons are available for all grades 6-12 and will soon be available through the ATLAS Program.

Advocacy for Oakland County Students at the State Level

Consultants from the DSS team advocate for children in Oakland County by providing leadership on many state-wide groups. Approximately 40% of DSS consultants serve on the state or national teams. **A few examples include:**

- **Michigan School Health Coordinators Association (MiSHCA):** Christina Harvey, Health Education Consultant, serves as the Oakland County Regional School Health Coordinator. Experts on the Whole Child (WSCC Model) make up this statewide network. These 23 experts serve as regional hubs for delivering evidence-based programs driven by current state and local data, research, and educational requirements related to well-being. They provide leadership on increasing student well-being so students can achieve academically in our schools and communities.
- **Michigan Department of Education English Learner Advisory Council:** Suzanne Toohy serves as a Member-at-Large. The EL Advisory Council is organized for mutual communications, professional development of its members, and support for English Learner students (ELs) regarding the education and services for ELs.
- **Michigan K-12 Computer Science Professional Learning Network (MICSPLN):** Vinos Kassab serves as a board member of the Michigan CS Professional Learning Network. The network focuses on connecting and supporting educators, administration, and stakeholders to implement computer science across the state of Michigan. The main purpose of the network is to support the educational aspirations, achievement, and attainment of students through high-quality learning experiences, and the skills and knowledge of educators through collaborative study, expertise exchange, and professional dialogue.



• **MDE Seal of Biliteracy Council:**

Jennifer Howe serves on this statewide group and also chairs the Outreach Subcommittee. The Michigan Seal of Biliteracy Council is responsible for establishing policy regarding the implementation and granting of the Seal, as well as promoting the benefits of the Seal. The Seal of Biliteracy Council met five times during the 2024-2025 school year, held three virtual webinars and support sessions, and provided support to individual districts throughout the year.

• **Disciplinary Literacy Task Force:**

Jenelle Williams serves as co-chair of the MAISA GELN Disciplinary Literacy Task Force, which supports ISDs across the state in implementing the Essential Instructional Practices for Disciplinary Literacy in the Secondary Classroom.

• **MAISA General Education Leadership Network:**

Carol Anthony, Executive Director of District and School Services, is on the Executive Committee of the state-wide networking structure that supports the state-wide collaboration of teaching and learning between ISDs and RESAs.

• **MAISA GELN SAT Task Force Report Work Group:**

Jenelle Williams and Geraldine Devine serve as members of this group, which is charged with supporting ISDs across the state in effective practices with College Board P/SAT testing.

• **MAISA GELN Early Mathematics Task Force and Early Literacy Task Force:**

OS consultants serve as task force and leadership team members. Task force members collaborate with university researchers and other educators to develop resources (e.g., Essential

Pupil Services District Assistance

District/PSA	Points of Assistance	Hours of Assistance
Avondale	2119.00	769.50
Berkley	308.00	373.25
Birmingham	170.00	221.25
Bloomfield Hills	237.00	252.50
Brandon	551.00	234.75
Clarenceville	63.00	96.50
Clarkston	629.00	314.25
Clawson	75.00	113.00
Farmington	979.00	503.75
Ferndale	644.00	298.00
Hazel Park	1626.00	731.25
Holly	835.00	339.50
Huron Valley	504.00	247.75
Lake Orion	677.00	280.50
Lamphere	725.00	301.00
Madison	315.00	180.00
Novi	708.00	325.50
Oak Park	116.00	154.00
Oxford	805.00	421.25
Pontiac	4177.00	1237.25
Rochester	832.00	350.50
Royal Oak	354.00	203.25
South Lyon	324.00	167.00
Southfield	690.00	304.50
Troy	557.00	297.50
Walled Lake	680.00	358.50
Waterford	1085.00	433.00
West Bloomfield	345.00	263.00
Totals	21130.00	9772.00

Instructional Practices in Early Literacy, professional learning modules, etc.) and support transfer of research into practice.

- **State Level GSRP Advisory Boards:** Oakland Schools Early Childhood Consultants serve on a variety of stakeholder groups including: 1) the state-wide evaluation project, led by a group of MSU researchers, which examines the impacts of GSRP classrooms; 2) Early Childhood Specialists, led by MiLEAP, to define and support the nationally recognized classroom coaching model, identify training needs, create online resources and supports, and support communication; 3) Social and Emotional Supports, to assess and build professional learning and other systems of support to strengthen the Social and Emotional supports available to young children and their families. 4) GSRP sub-recipient recruitment, application, and onboarding resource development workgroup.
- **MAISA Early Childhood Administrators Network:** Dawn Koger, Early Childhood Director, is on the Executive Committee of the state-wide networking structure that supports the delivery of early childhood programs and services of ISDs and RESAs.
- **Michigan Assessment Consortium:** Dr. Steven Snead serves on the Board of Directors for the Michigan Assessment Consortium (MAC). MAC is a professional association of educators who believe quality education depends on accurate, balanced, and meaningful assessment. A nonpartisan and nonprofit organization, the MAC provides leadership and services to advance high-quality, balanced assessment practices and systems.
- **Michigan School Testing Conference:** Dr. Steven Snead serves on the Executive Committee. This conference serves the professional learning needs in testing and assessment for up to 800 educators annually from across the state. Through his role on the committee, Steven is proud to co-facilitate many sessions with outstanding local Oakland County educators, featuring the innovative assessment work they lead in their districts.
- **Building a Better Assessment Future Conference:** Dr. Steven Snead serves on the Executive Committee of the Building a Better Assessment Future, which is held annually in East Lansing, MI. This conference features the unique and visionary efforts of local districts in creating more effective and impactful balanced assessment systems. Dr. Snead routinely features the work of local Oakland County districts in this conference.
- **US Math Recovery Council:** Dr. Dana Gosen serves on the board of directors for the U.S. Math Recovery Council. Math Recovery is a nationally recognized program that empowers educators to advance student mathematical thinking and success through customized and unique professional learning with meaningful assessment and instruction.



Community Engagement

DSS team members organized opportunities to engage the community, caregivers, and students throughout the 2024-2025 school year. A few examples include:

- **Playdates in the Park:** This summer, the Great Start Collaborative (GSC) hosted 15 “Playdates in the Park” events across playgrounds in Clarkston, Southfield, Hazel Park, and Pontiac. These gatherings gave families opportunities to connect, explore, and learn through play in their local communities. More than 70 families participated.
- **Book Swap Event:** GSC organized a community book swap at Heritage Park in Farmington, which encouraged literacy, family engagement, and access to new reading materials. The event welcomed 75 participants.
- **Financial Literacy Arts Contest:** Oakland Schools partnered with the Oakland County Treasurer’s Office and Flagstar Bank, facilitating the 2024-2025 Financial Literacy Arts Contest. Through this project \$10,000 in cash awards were earned by high school winners.
- **African American Read-In 2025:** This powerful community event brought students, their families, and teachers together virtually to hear award-winning author and illustrator Don Tate. 378 attendees in Oakland County received a free copy of Don Tate’s book, *Jerry Changed the Game*. New this year, Oakland Schools hosted five in-person watch sites for this event, in partnership with Ferndale, Berkley, Royal Oak, West Bloomfield, and Pontiac READS! (A Community organization dedicated to supporting literacy access in the city of Pontiac.)

Consortium Pricing and Other Cost Savings

The District and School Services team works closely with districts to provide cost savings whenever possible. DSS staff routinely collect perspectives from school stakeholders and leaders to determine needs, as well as seek input on resources, tools, and providers that districts recommend. Our staff of experts then assembles product information across the marketplace, and, when feasible, vets solutions for quality. We then negotiate with providers to seek discounted consortium pricing, saving districts thousands of dollars in product pricing and implementation support. A few examples include:

- Early Childhood orchestrated a coordinated purchase of the online COR Advantage child assessment tool, so it is more affordable for programs in Oakland County, resulting in a savings of 47% for programs in Oakland County, resulting in a savings of 47% for each child license or a countywide savings of \$65,367 overall (\$36,730 for GSRP students) for the 2024-2025 program year.
- Early Childhood created, implemented, and funded a county-wide coordinated marketing plan to support child recruitment efforts for all programs/classrooms for GSRP, which reduced the demand on local programs as well as the duplication of efforts. The campaign included Google Ads, outdoor signage, boosted social media posts, bulk mailings, Public Broadcasting System (PBS) Public Service Announcements (PSAs), and program-specific promotional materials. Participation in community events, such as park movie nights, Great Start Collaborative events, and community fairs, offered in-person opportunities to outreach to families. Early Childhood partnered with GSC on pediatric and community outreach in targeted areas. Early Childhood uses GSRP enrollment data to identify underrepresented or under-enrolled communities and creates targeted strategies. No direct cost was assessed to any local district.
- Early Childhood purchases an annual subscription for Michigan Early Childhood Connect (MiECC), which is used as the application and enrollment database for GSRP. All GSRP partners receive training, technical assistance, videos, tip sheets, and ongoing support to successfully implement MiECC without incurring any direct program expense. MiECC also allows Early Childhood to closely monitor county-wide enrollment, including filling all the GSRP over-income slots awarded to Oakland Schools. Additionally, using MiECC Early Childhood was able to correct reporting errors and reclaimed more than \$500,000 at count.
- Early Childhood applied for 161 start-up grants on behalf of our subrecipients to offset expenses of opening new GSRP classrooms, which is in addition to the per-pupil allocation. \$5,148,200 was given to programs to meet licensing requirements, make minor renovations, purchase classroom furniture and materials, provide hiring bonuses, and other approved costs.

- A Return on Investment analysis of Early Childhood’s Help Me Grow program indicates every \$1 invested generates more than \$15 in quantifiable savings over the long term.
- Oakland Schools provides early childhood educators with professional learning on the preferred GSRP curriculum through an agreement with HighScope. GSRP teachers and administrators can enroll in all mandated training sessions through the ISD at substantially reduced registration fees and without traveling out of the county, reducing professional learning costs by up to 70%. In 2024-2025, 882 participants completed various certified HighScope training events.
- MDHHS Adolescent School Health Program (through MPCA): This program covered the costs of our state's evidence-based PreK-12 Tier 1 Comprehensive Health Education curriculum, Michigan Model for Health (MMH), for 26 of our districts at one grade level or more and in all 220 Early Childhood classrooms in Oakland County. It has the highest coverage in the State of Michigan.
- For the past 20 years, Oakland Schools has subsidized Oakland County public schools' purchases of subscriptions for streaming video-on-demand. For the 2024-2025 school year, 4 charter schools and 17 districts selected Discovery Experience, with 12 of 17 districts are subscribing for all their buildings.
- This service has given 143 school buildings in Oakland County access to more than 18,000 video titles, 81,800 video clips, and 29,600 images, as well as an audio library featuring podcasts, audiobooks, songs, and sound effects. A variety of other teaching and learning tools are also available. Please note that these statistics do not reflect the reuse of any assets that may have been downloaded for offline access. These resources enhance curricula, provide multiple means of accessing content, and engage today's students more deeply in their learning. During the 2024-25 school year, almost 12,000 Oakland County teachers and students logged into their Discovery Education accounts to interact with and enhance their teaching and learning. Teachers accessed lesson and content-area specific activities, curated resources on curriculum-based topics, interactives, articles, lessons, and quizzes over 100,000 times. The REMC Save price for Discovery Experience will remain at \$1,700 per subscribing school building for the 2025-2026 school year, which is unchanged from the 2024-2025 school year. In recent years, Oakland Schools has subsidized Discovery Experience subscriptions at a rate of \$497.25 per school, covering approximately 29% of the total subscription cost. Following a review by our finance department, we are now able to increase our subsidy to reflect the originally intended 30/70 cost-sharing model. As a result, Oakland Schools will increase its subsidy to \$510 per subscribing building.
- Oakland Schools subsidized the cost of the STAMP proficiency assessments for world language test-outs, the Michigan Seal of

Biliteracy, and progress monitoring at a savings of \$29,343.60 to districts. This subsidy saved districts \$9.90 for each assessment administered. Assessments were given in Arabic, Armenian, ASL, Chaldean, Filipino, French, German, Greek, Hindi, Japanese, Korean, Mandarin Simplified, Mandarin Traditional, Marathi, Polish, Portuguese, Russian, Spanish Monolingual, Tamil, Telugu, Ukrainian, Urdu, and Vietnamese. 23 public school districts and 1 PSA utilized the subsidy. 2964 students were tested.

- Oakland Schools' partnership with Renaissance K-12 Educational Software Solutions provides both a cost reduction and a subsidy for local district implementation of the Renaissance DnA platform. DNA helps teachers implement impactful formative practices with flexible standards-based assessments that deliver actionable insights to drive instruction and district-level decisions. Oakland Schools staff provide front-line technical support through our Service Desk, while also providing consultation and professional learning, saving each district more than \$3,500 in direct training costs. We provide over \$375,000 in OS subsidies to reduce the cost of Renaissance DNA for local districts.
- Oakland School’s partnership with Faria Education Group provides local districts access to the Atlas Curriculum Mapping system, providing both a cost reduction and a cost subsidy. Atlas is the leading curriculum management and lesson planning platform used in 24 Oakland County districts. Atlas allows districts to develop, review, refine, analyze, and share standards-aligned curriculum and lessons, ensuring equitable learning outcomes for all students. It also allows districts to disclose transparent curriculum information to parents and local community stakeholders. Through our subsidy, we save districts over \$135,000.

Community Engagement

Services provided by our District and Pupil Services department actualize cost savings to all districts located within Oakland County in support of pupil accounting and truancy efforts.

Truancy			
Cases x \$2500	2186	\$2,500.00	\$5,465,000.00
Back to School			
Pupils x \$1000	1568	\$1,000.00	\$1,568,000.00
Pupil Accounting Audits			\$120,615.07
28 Districts x \$250 x 2 audits	28	\$250.00	\$14,000.00
October 2024 Audit - LEA Only	161823.26	\$0.33	\$53,401.68
Feb 2025 Audit - LEA Only	161252.71	\$0.33	\$53,213.39
Total Cost Savings			\$7,153,615.07

Support Services

At Oakland Schools, we serve student learning in many ways, some more direct than others. By focusing on cost savings, efficiencies of scale and supporting the technological framework for delivery of instruction and its assessment, Oakland Schools' employees play an important role in maximizing the dollars that go into every Oakland County classroom. Auxiliary Services, Maintenance and Facility Operations (including the Office of Procurement and Contracting), Communication Services, Financial Services, Government Relations, Human Resources, Legal Affairs and Technology Services support and strengthen the ancillary services essential for the smooth operation of every school.

Oakland Schools Transportation Department Services to LEAs and PSAs

As a training agency serving Oakland County LEAs and PSAs, the Transportation Department provides educational training for all our new and current school bus driver staff. Featured in our MDE approved curriculum are:

- **Beginner Bus Driving**
- **Continuing Education Classes** – to maintain school bus driver credential
- **Supervisor Training**, for drivers and staff that move into an LEA managerial role through the instruction of BMTC, Basic Management Transportation Curriculum
- **ELDT (Entry Level Drivers Training)** OS partners with TAAM (Training Agency Association of Michigan) to provide the Theory portion to all school bus drivers hired after February 7, 2022. Drivers must complete this portion of Theory in addition to the Beginners Bus Driving Course. All these MDE education classes are funded through the Section 74 Grant reporting.
- **Train the Trainer** - MDE approved curriculum to prepare individual staff members to be State approved Trainers.
 - Oakland Schools Transportation partners with all LEAs and PSAs to teach The Trainers are on-site at each individual LEA and PSA to prepare new school bus drivers for the behind-the-wheel road test portion of the ELDT Federal requirements.
- Oakland Schools support of LEA and PSA Transportation Supervisor / Directors

Oakland Schools Transportation also supports LEA and PSA Transportation Supervisor / Director through personal relationships, communication, collaboration, research of the law, and networking by Oakland Schools to each LEA. Oakland Schools can provide relevant, first-hand information to our Transportation staff, and

all stakeholders because of Oakland Schools active involvement in various State and Professional organizations. This support extends to each LEA and PSA Business Office support in collaboration involving data preparation, and reporting related for:

- **CFE (Career Focused Education)** transportation reimbursement of expenditures between campuses through the MDE Grant.
 - Oakland Schools provides the data forms to each LEA and PSA, complies, reviews, and audits the data.
 - Following the review, the Grant award amount is submitted to Oakland Schools Finance by Oakland Schools Transportation for payment to each LEA and PSA.
 - This calculation for payment is based on the final SE-4094 per mile average for Oakland Schools reported to the State.
- **SE-4094 Transportation expense review & audit:** Oakland Schools provides each LEA and PSA with a review and audit of data for the SE-4107 (School Bus Inventory), SE-4059 (Student Count Logs & miles traveled), before submission to CEPI/MDE
- **221 (Transportation Categorical)** – reimbursement of general education expenses based on the SE-4094 data and the State appropriated percentage, currently at 27.27%.
 - Oakland Schools receives the LEA and PSA data for review and audit.
 - Spreadsheet documentation is prepared for submission to CEPI for payment.
- **Office of the State Attorney General** – Task Force member for work on Confidentiality Act PA-301 of 2020 (“AN ACT to create the address confidentiality program; to provide certain protections for victims of domestic violence, sexual assault, stalking, or human trafficking and for certain other individuals; to prescribe duties and responsibilities of certain state departments; to require the promulgation of rules; to create a fund; to prohibit the disclosure of certain information and obtaining a certification under this act by fraud; and to prescribe penalties.”)
 - Oakland Schools being a Task Force Committee member, our input was provided as to how to best serve each student in this program, related to their transportation.
 - Information and education were provided at our monthly Supervisor/Director meetings, along with personal visits to LEAs and PSA who participated in this program.
- **Office of the Auditor General** – 2024 audit of Oakland Schools LEA and PSA fleets (SE-4107 – School Bus Inventory) and driver records for compliance to ELDT (Federal Entry Level Drivers Training) and verification of fleet for the Transportation Categorical (221) for reimbursement of general education miles.
 - Oakland Schools directed and assisted LEAs and PSAs in the proper documentation and preparation of records for current and future audits.

- **TNC – (Transportation Network Companies)** – the vetting of potential third party companies that want to work within Oakland Schools to transport our students are asked to meet and discuss their business model and requirements necessary based on the law, MCL - Section 257.2107.
 - Following meeting with the company, the company is invited to present to the Oakland Schools Transportation Supervisor/Directors to provide information so each LEA and PSA can make their independent decision if the company will provide service for their students.
- **Electric School Bus Energy Grant** – provide LEAs and PSAs Federal and State Grant and Rebate information, applications, and deadlines.
 - Work with individual LEAs and PSAs to provide guidance in Grant application submission.
 - Provide LEA and PSA assistance in developing specifications for the bus build-out by the OEM.
- **Alternate Class training settings on site at various LEAs and PSAs within Oakland Schools and neighboring ISDs.**
 - on-site training, weeknight, and weekend classes
 - resulting in training 124 new school bus drivers who could not attend three consecutive days at OS due to current job scheduling conflicts.
 - This training venue continues due to its success and opportunities for additional staffing at LEAs and PSAs.
- **On-site instruction at the LEA or PSA for any Class Curriculum or Professional Development materials necessary to train school bus drivers, staff, supervisors, directors.**
 - Oakland Schools Transportation have developed a team of MDE certified Instructors to teach transportation staff at the LEA and PSA facility.
 - This customer service allows more drivers to attend, reduce or eliminate travel costs for commuting to an off-site location.

Training through Professional Development

As Oakland Schools relationships are built with all LEA and PSA Transportation Directors, Supervisors, Trainers, and Business Office Managers, the vision of Oakland Schools is to provide practical and relevant ways to create value by innovative approaches to quickly meet LEA and PSA training needs for staff, students, parents, and community.

- **Critical Incident Training** – Oakland County Sheriff provided 6 hours of on-site training using classroom and actual scenario enactments on the school bus.
 - Three location sites over the course of 3 weeks
 - Brandon Schools / Farmington Schools / Waterford Schools
- **Communications Summit** – Three sessions over the course of the school year at the Oakland Schools Campus to teach school bus drivers, staff, and administrators to be effective communicators.
 - Curriculum taught from the Jon Gordon book, “The Energy Bus”
 - Communications skills for all staff to effectively speak and listen

to students, parents, teachers, administrators, and colleagues.

- Taught by Communications Coach, Ted Zotos
- Received State of Michigan attention through articles in Bridge Magazine
- Received National attention through publication in School Transportation News
- LEAs in Kentucky and Tennessee received recordings of session to teach to their individual schools.
- **Mental Health Awareness** – Current professional development topic to provide our transportation staff with the knowledge of self-awareness, and ways to identify triggers in our stakeholders, including students, parents, staff, and community. Co-taught by the Oakland County Sheriff, Oakland County Health and Human Services, and Oakland Schools Special Populations professionals.
 - Three-part series presented and taught over the 2024-2025 school year at Oakland Schools Main Campus.

In the spirit of collaboration, along with our Oakland Schools LEAs and PSAs, each State of Michigan ISD is invited to attend Oakland Schools Professional Development. The vision of Oakland Schools is to provide networking opportunities to all transportation staff professionals throughout Michigan. Included in a list of those who were personally invited and did attend are: Wayne RESA, Macomb ISD, Genessee ISD, Kalamazoo RESA, Michigan Department of Education, Northwest Transportation Consortium, Saginaw ISD, St. Clair ISD.

Oakland Schools Administration has empowered Transportation to be a leader in the State of Michigan and beyond. Leadership in Transportation is achieved through membership, participation, and collaboration through State committees and professional organizations. Oakland Schools Transportation is an active participant in:

- **MAPT Legislative Committee (Michigan Association of Pupil Transportation)** Currently Committee Chair. Our focus and work is to endorse or oppose legislation related to School Bus Pupil Transportation including students, drivers, and fleet management.
- **MAPT** Continuing/Certification Classes.
- **NSC** (National Safety Council),
- **NHSTA** (National Highway Safety Transportation Agency),
- **NAPT** (National Association of Pupil Transportation),
- **NCST** (National Congress on School Transportation),
- **MSBO** (Michigan School Business Officials)
- **State Advisory Committee for SE-4094**
- **Attorney General Task Force** – Confidentiality Act PA-301 of 2020

Oakland Schools continues to provide relevant, first-hand information to our Transportation staff, and all stakeholders because of Oakland Schools active involvement in various State and Professional organizations.

Legal Affairs



Services Provided by Legal Affairs 2024-2025

Matter Name	Fiscal Year 2025 Costs Year to Date
District & Community Services	\$20,997.09
Contracts	\$16,814.50
Total	\$37,811.59



A variety of services provided by and through the **Legal Affairs department** saved Oakland County districts legal fees in the amount of

\$37,811.59

To remind us, and you, of what the intermediate school district is here to do, we use the acronym ISD:

Increase student achievement

Serve diverse needs of schools

Decrease costs/increase efficiencies

Technology Services

The Oakland Schools Technology Services Department delivers comprehensive, high-quality technology solutions that support teaching and learning, as well as operational excellence, across Oakland County's public school districts. The department provides leadership and expertise in network infrastructure, cybersecurity, data systems, application development, instructional technology, and field services. Through shared service models, consortium partnerships, and innovative initiatives, Technology Services ensures that districts have secure, reliable, and equitable access to the tools, data, and support needed to advance student learning and organizational efficiency. Guided by the core values of service, expertise, and excellence, the department partners with educators, administrators, and state leaders to strengthen systems that power education today and prepare schools for the technologies of tomorrow.



Advancing Artificial Intelligence in Education

During the 2024–25 school year, members of the Technology Services team, in collaboration with the District and School Services team, led several key initiatives to advance the use of artificial intelligence (AI) in education across Oakland County. These efforts focused on developing practical resources, providing professional learning, and supporting districts as they integrate AI responsibly and effectively into teaching, learning, and operations.

Resource Development

Two foundational resources were published or revised to guide local districts in their AI planning and implementation:

- Generative AI: Sample Guidance for Schools
- Evaluating Your Local Guidance

These documents assist school district teams in crafting and reviewing district-wide expectations for the use of generative AI among staff, students, and community members. In addition, the Technology Services team released an App and Extension Vetting Rubric to help staff evaluate digital tools through the lenses of instructional value, privacy, security, and acceptable use.

Professional Learning and Training

Oakland Schools provided multiple face-to-face and virtual training opportunities focused on AI in education, reaching over 300 participants across the county. Highlights included:

- AI Snapshots Webinar
- Camp AI – a full-day virtual event
- AI for Today's Business Office
- Spring into AI – a full-day, in-person learning event

The Oakland Schools AI Collective

This year, Oakland Schools introduced the AI Collective, a collaborative network of educators and leaders from across Oakland County dedicated to shaping the future of AI in education. Through shared learning, policy development, and innovation, the Collective is positioning Oakland County as a statewide leader in responsible and human-centered AI integration.

District Collaboration and Support

Oakland Schools staff provided facilitation and technical support for local district AI task forces and guidance development, including work with Birmingham, Berkley, South Lyon, and Holly. Additional districts such as Royal Oak, Ferndale, Madison, Novi, and Pontiac leveraged their Field Services staff for professional development, coaching, and localized implementation support.

Technology Services

Technology Field Services

Technology Services partners with 15 districts in Oakland County, providing a full range of on-site and centrally managed IT services on a cost-recovery basis. Districts that utilize these services realize increased operational efficiency and customer satisfaction while directing savings back to the classroom.

2024–2025 Success Statistics

Oakland Schools Technology Field Services supported:

- 160+ buildings
- 20,500+ district staff members supported
- 140,000+ students supported

Key Accomplishments

- Strengthened district cybersecurity posture to maintain cybersecurity insurance eligibility.
- Enhanced security and performance of cloud-based network infrastructure.
- Supported the implementation of new classroom technologies, innovative learning spaces, and large-group instructional environments.
- Achieved a 94% favorable customer satisfaction rating on the 2024–25 Field Services Survey, with participation from all shared service districts.

Districts Save Money with Technology Services

Technology Services provides savings through our high-quality systems, solutions, and support to Oakland County schools.

- **ONE Network Support:** Technical assistance for the ONE Network is provided to all districts at no cost, ensuring reliable connectivity and expert support across Oakland County.
- **ONE Follett Library Management System:** Hosted, maintained, and regularly updated by Oakland Schools—offered at no charge to 24 districts, ensuring equitable access to library resources.
- **Internet Services:** Oakland Schools provides Internet Service Provider (ISP) access valued at approximately **\$20,000 per district for a 10GB connection**, delivered at no cost to local districts.
- **SPAM Filtering:** Provided to 11 districts, blocking over 6 million unwanted emails and delivering an estimated market value of \$8,000 in annual savings per district.
- **CISCO Umbrella Secure Internet Gateway:** Supported for all ONE Network districts, processing 57 billion queries this year and blocking over 6 million security threats to prevent access to malicious content.
- **Security Information and Event Management (SIEM):** A robust, countywide cybersecurity monitoring system combining information and event management functions. The Securely Managed SIEM provides real-time alerts and 24/7 monitoring by skilled engineers—yielding average district savings of \$8,000 per month compared to commercial services.
- **DUO Multi-Factor Authentication (MFA)** adds an essential layer of security by requiring users to verify their identity through a second device or method—helping prevent unauthorized access to sensitive systems and data. Districts continue to leverage a **64% average cost reduction** for districts by partnering directly with Cisco to secure affordable, enterprise-grade MFA licensing—ensuring security compliance and accessibility for all districts.
- **Phishing and Cybersecurity Awareness Training:** Achieved **average district savings of 75%** through a collective purchasing model. This initiative supports compliance with cybersecurity insurance requirements by providing staff with phishing simulations and security awareness training.
- **Student Information System (MISTAR-Q):** Delivers ongoing value through comprehensive support, training, and customizations to meet evolving state and district needs. All **28 districts** utilize the Medicaid billing feature, improving compliance and efficiency. Negotiated consortium pricing and partially subsidized support reduce costs while maintaining high-quality service.
- **MiPEER (PowerSchool BusinessPLUS) Consortium:** Serving **21 district members**, MiPEER supports finance, payroll, and HR operations through continuous support, training, and testing. Negotiated consortium pricing and partially subsidized support reduce costs while maintaining high-quality service.

Countywide
Technology
Support



Supported staff, students, parents, and guardians across Oakland County with timely, high-quality technical assistance, resolving over

69,000 tickets

Online Application Glossary

Discovery Streaming

Provides engaging, standards-aligned, rich media and interactive digital textbooks to support a digital learning environment.

Field Services

A full range of onsite and centrally managed technology services is provided to districts through an intergovernmental agreement to improve technology in the district while decreasing costs.

Follet Library Management

Library management application.

MIPEER (Michigan Partnership for Essential Education Resources)

A non-profit voluntary organization to provide a framework for the operation, maintenance, utilization, and/or licensing, administration, and support of a finance and HR software system to multiple sites in the Oakland County area for educational and related purposes.

MISTAR-Q

Student information system including: scheduling, attendance, food service, grade reporting, parent portal, student portal, and more.

MSDS

State of Michigan student data collection system.

Non-Pub

Application is used by non-public schools that educate students living in Oakland County. Oakland LEAs receive annual reports from this system about students residing within their district boundaries.

ONE

Oakland Network for Education is a high-speed, fiber-optic data network consortium that interconnects 29 member public school districts within Oakland County.

PolyPlot

Transportation management application.

SPAM Filtering

Is available for all districts that elect to participate. District email is routed through filtering devices located at both the primary and secondary head ends to identify and block “blacklisted” SPAM, thereby reducing the volume of inappropriate or unwanted email delivered to each district.



Online Application Usage

2024-2025 Online Application Usage by District													
District	MIPEER	MISTAR-Q/ MISTAR Lite	ONE	NonPub	MSDS	Field Services	SPAM filtering	Discovery Streaming	Moodle	Follet/ Destiny Library Mgt	PolyPlot	SIEM	Vulnerability Scanning by OS provided vendor
Avondale School District	X	X	X	X	X		X	X		X			X
Berkley School District	X	X	X	X	X	X	X	X		X		X	X
School District of the City of Birmingham	X	X	X	X	X		X			X		X	X
Bloomfield Hills School District	X	X	X	X	X					X			X
Brandon School District	X	X	X	X	X			X		X	X	X	X
Clarenceville School District	X	X	X	X	X	X	X	X		X	X	X	X
Clarkston Community Schools		X	X	X	X			X		X	X	X	X
School District of the City of Clawson	X	X	X	X	X	X				X		X	X
Farmington Public School District		X	X	X	X	X		X		X	X	X	X
Ferndale Public Schools	X	X	X	X	X	X		X		X	X	X	X
School District of the City of Hazel Park	X	X	X	X	X						X		X
Holly Area School District		X	X	X	X	X	X	X		X		X	X
Huron Valley School District	X	X	X	X	X					X	X		X
Lake Orion Community School District	X	X	X	X	X			X		X			X
The Lamphere Schools	X	X	X	X	X		X	X		X			X
Madison District Public Schools	X	X	X	X	X	X					X	X	X
Novi Community School District	X	X	X	X	X	X	X	X		X	X	X	X
Oak Park School District		X	X	X	X	X				X	X	X	X
Oakland Schools	X	X	X	X	X	X	X	X	X		X	X	X
Oakland Schools CFE		X	X		X	X	X	X			X	X	X
Oxford Area Community School District		X	X	X	X		X	X		X			X
School District of the City of Pontiac	X	X	X	X	X	X				X	X	X	X
Rochester Community Schools	X	X	X	X	X		X	X	X	X			X
School District of the City of Royal Oak	X	X	X	X	X	X		X		X	X	X	X
South Lyon Community Schools		X	X	X	X			X		X	X	X	X
Southfield Public Schools	X	X	X	X	X	X				X		X	X
Troy School District		X	X	X	X					X			X
Walled Lake Consolidated School District		X	X	X	X			X		X			X
Waterford School District	X	X	X	X	X				X	X	X	X	X
West Bloomfield School District	X	X	X	X	X	X		X		X		X	X

Application Services

Application Development Team

The Application Services Team delivers innovative, secure, and efficient technology solutions that power the daily operations of Oakland County districts. Comprised of three integrated areas—Application Development, Student Applications, and Business Applications—the team designs, supports, and enhances systems that manage everything from student enrollment and achievement data to payroll, finance, and HR operations.

In partnership with local districts, the team provides comprehensive support for two countywide enterprise platforms: MISTAR-Q, which manages student information and reporting, and BusinessPlus, which powers district finance, HR, and payroll operations. Together, these systems enable districts to operate efficiently, maintain compliance, and make informed, data-driven decisions. In addition, the team develops custom applications that streamline internal workflows, improve data accuracy, and create new efficiencies—allowing Oakland Schools to better serve educators, administrators, and students across the county.

Business Applications Team

The Business Applications team continues to provide comprehensive support to 20 districts in the MiPEER Consortium, managing both BusinessPlus Finance and BusinessPlus HR/Payroll systems.

Key Highlights for 2024–25:

- **System Upgrade:** Upgraded the BusinessPlus application to version 25.05, enhancing security by deprecating outdated Microsoft technologies and improving overall system stability.
- **Standardization Initiative:** Completed the first phase of a multi-year program to standardize and update account codes across all districts. All member districts now utilize uniform core payroll deduction codes, simplifying payroll management and reporting.
- **Operational Support:** Identified and recommended new paper check stock providers after RR Donnelley's exit from the low-volume printing market, ensuring uninterrupted district operations.
- **Innovation and Planning:** Completed a discovery project for an employee benefits portal to evaluate feasibility for consortium-wide use. A pilot implementation is scheduled for November 2025.
- **National Leadership:** A member of the Business Applications team was selected to serve on the National BusinessPlus User Group Board, helping shape user group functions and plan the annual national conference.

Student Application Support Team

The Student Application Support Team supports the MISTAR student information system, which plays a vital role in advancing student information management across 21 districts and public school academies, while also supporting all 28 districts with Medicaid billing. Through innovative solutions, statewide collaborations, and ongoing professional learning, the team reduces staff workload, improves efficiency, and ensures districts remain compliant with state and federal reporting requirements.

Key Highlights for 2024–25:

- **Streamlined Data Integration:** Every MISTAR district now integrates with the Michigan Data Hub to securely exchange student data with third-party vendors and automate critical workflows for newly enrolled students—such as the Snack-Pack, UIC Services, and Direct Certification. This integration has significantly reduced manual workload for district staff.
- **Innovations and Enhancements:** Implemented new MISTAR-Q features to meet evolving customer needs, including Student Success Manager, Q Analytics, Program Forms, Student Forms, and the Wellness Center module.
- **Professional Learning:** Delivered multiple webinar-based training sessions and launched asynchronous, badge-based professional learning for teachers and administrative assistants. These trainings support improved workflows and touchless enrollment processes, with SCECH credits available for participants.
- **Collaborative Leadership:** Partnered with Wayne RESA to facilitate the MISTAR User Group (MUG), fostering collaboration, collecting user feedback, and helping to shape the strategic direction for both MISTAR-Q and the MISTAR Consortium.
- **Consortium Partnership:** The MISTAR Consortium, consisting of Oakland Schools and Wayne RESA staff, continues to collaborate on statewide innovation, technical development, and user support for all MISTAR-Q districts across Michigan.
- **Customer Success Engagements:** Conducted proactive Customer Success meetings with districts to strengthen relationships, enhance user experience, and promote long-term satisfaction with MISTAR-Q.
- **State and Federal Reporting:** Supported districts in successfully certifying required state (MSDS) and federal (CRDC) reports, ensuring compliance and accuracy in submissions.
- **Statewide Influence:** Continued to represent Oakland County at the state level through participation in METL, MPAAA, MiDataHub, and the Great Data Lake Initiative, contributing to Michigan's data governance and interoperability efforts.
- **New MTSS Module:** Collaborated with Aequitas and district representatives to design and develop a new Multi-Tiered System of Support (MTSS) module in MISTAR-Q, now available statewide to all consortium districts.
- **National Leadership:** The team presented five sessions at the MISTAR-Q National User Experience Conference in Camarillo, California (April 2025), highlighting Oakland Schools' leadership in innovation and best practices.

Focus on Cybersecurity

Oakland Schools continues to enhance cybersecurity protections to safeguard district data, systems, and users. Through layered defenses, proactive monitoring, and strong partnerships with local districts, the organization has strengthened its overall security posture across all systems and devices.

- Penetration Testing: Identify and remediate any vulnerabilities found across applications and devices, resulting in targeted solutions to strengthen overall security.
- Multi-Factor Authentication (MFA): Continued support of MFA across Oakland Schools and the 15 Field Service districts, ensuring secure access to business, finance, and student information systems.
- Security Information and Event Management (SIEM): Expanded participation in the automated security event monitoring system to detect and respond to threats in real time—now supporting 25 local districts.
- Cybersecurity Awareness Training: Continued cybersecurity awareness training for all staff, establishing a strong first

line of defense against social engineering attacks.

- Email Encryption and Secure File Sharing: Increased use of our Encryption and Secure Share technology to protect sensitive communications and attachments across Oakland Schools and supported districts.
- Phishing and Cybersecurity Awareness Training: A program designed to educate staff on how to recognize and avoid cyber threats such as phishing emails, ransomware, and social engineering attacks—helping build a strong first line of defense against cybersecurity breaches.
- Endpoint Detection and Response (EDR): Implemented countywide EDR protection to strengthen endpoint security and improve response time to threats.

These initiatives reflect Oakland Schools' commitment to maintaining the highest standards of cybersecurity, protecting district operations, and supporting compliance with cybersecurity insurance requirements.

Regional and Statewide Initiatives

- Department leadership participated in the AI for Michigan Statewide Workgroup, contributing to the development of resources and guidance designed to help school districts across Michigan navigate and implement artificial intelligence responsibly and effectively.
- Oakland Schools launched a multi-year project to increase the resiliency of fiber connections serving local districts. The newly built network routes will significantly enhance redundancy, minimize potential downtime during outages, and strengthen the reliability of district connectivity. The project was awarded to AMcomm and submitted for E-Rate funding, with an estimated 50% reimbursement upon completion.
- Through participation in MiConnect, Oakland Schools worked with statewide partners to expand home internet access and advance digital equity—ensuring all students have reliable connectivity for learning.
- The Oakland Schools Services Desk manages the MiServiceDesk, which supports integral statewide solutions including:
 - MiStrategy Bank
 - MiDataHub
 - MiRead
 - MiEWIMS
 - EduPaths
 - MiEarly Childhood Connect
- The MISTAR Consortium, a partnership between Oakland Schools and Wayne RESA support teams, collaborates to deliver statewide innovations, enhancements, and technical support for all MISTAR-Q districts across Michigan.
- Department leader serves as an active member and Co-Chair of the Executive Board for METL (Michigan Educational Technology Leaders), a statewide organization instrumental in establishing K-12 cybersecurity standards and advocating for state-funded technology improvements that benefit districts across Michigan.
- Department leadership serves as an Executive Board member for MACUL (Michigan Association for Computer Users in Learning), a statewide organization dedicated to advancing education through technology innovation, collaboration, and professional learning.
- Two MACUL Learning Area Delegate seats held, representing Oakland Schools' continued leadership in advancing instructional technology and professional learning across Michigan.

Shared Services

Districts utilize Oakland Schools Shared Services because of:

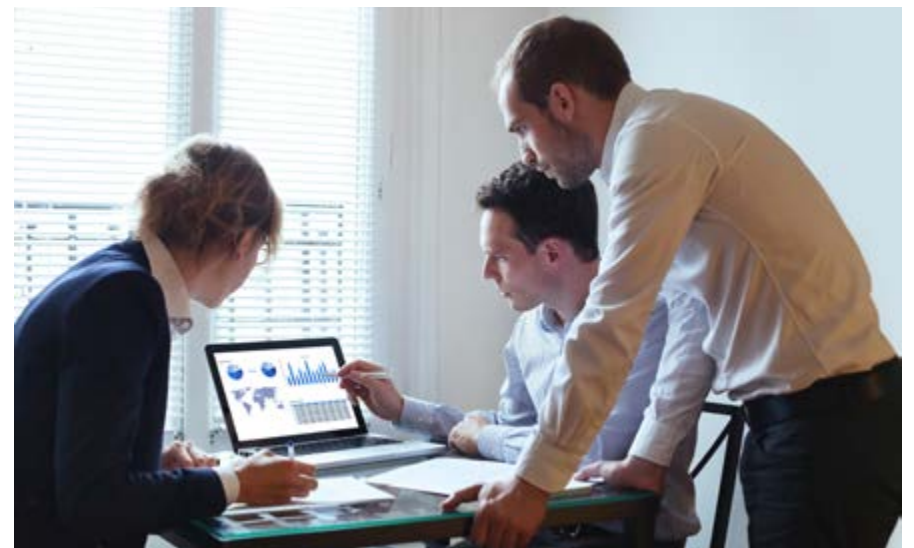
- Oakland Schools' strong reputation and expertise in business
- LEA may be unable to attract and employ high caliber candidates
- LEA may have a high or sudden turnover of personnel
- LEA may want (or be forced) to reorganize their department(s)

Shared Services employees are strong and dynamic; they are experts in their fields, and Oakland Schools encourages their continued professional development in order for our employees to maintain their certification(s) and expand upon their skill set. It is their expertise that LEA's covet and rely upon when they request our services. It is also the LEA's expectation that our employees will easily assimilate into the culture of their District, and build strong relationships with their personnel and vendors.

Shared Services provides business support services to Clawson.

Districts Save Money with Shared Services:

Shared Services will save districts money by providing stability to their business office with the establishment of processes and procedures that meet best practices. Shared Services employees also have experience in various financings such as State Aid Notes, Tax Anticipation Notes, Capital Projects, and Sinking Funds.



Human Resources

In addition to building and maintaining positive employee relations by supporting the goals, mission and vision of Oakland Schools, Human Resources supports the work of our local districts through processing certifications and job postings for local districts participating in the Oakland Human Resources Consortium (OHRC).

Certification Approvals

During the 2024-2025 school year, Oakland Schools processed certification approvals for Oakland County school districts as indicated in the table on the right. Temporary approvals are for persons who are attempting school and working toward a certain special education endorsement or approval. Approvals are for school social workers, special education directors or supervisors. They are not an endorsement on a teaching certificate, but rather an approval letter from the Michigan Department of Education.

Oakland Human Resources Consortium

The Oakland Human Resources Consortium (OHRC) is a consortium of Oakland County school districts dedicated to the recruitment, selection, employment, and professional growth of quality educators and other school district employees. When candidates submit their applications through the online process, they are entered into the OHRC database and made available to all districts in the Consortium.



Number of Oakland Human Resources Consortium Postings	
District	2024-25
Avondale School District	112
Berkley School District	156
Birmingham Public Schools	132
Bloomfield Hills Schools	106
Brandon School District	90
Clarenceville School District	38
Clarkston Community Schools	150
Clawson Public Schools	44
Farmington Public Schools	335
Ferndale Public Schools	96
Hazel Park Schools	153
Holly Area School District	85
Huron Valley Schools	335
Lamphere Public Schools	191
Madison District Public Schools	44
Novi Community Schools	236
Oak Park Schools	62
Oakland Schools	103
Oxford Community Schools	283
Pontiac City School District	114
Royal Oak Schools	101
South Lyon Community Schools	213
Southfield Public School District	471
Walled Lake Consolidated Schools	390
Waterford School District	323
West Bloomfield School District	180
Total	4543

Production Printing and Graphics

Production Printing and Graphics (PP&G) offers high-quality printing and design at a low price, while remaining dedicated to personalized service and the use of new technology. Services include printing, scanning, design, and free pickup and delivery.

Go to www.OSPrintShop.com for a full list of services as well as online ordering.

This table illustrates the total cost of district usage of low-cost, high-quality print resources provided by PP&G.





Production Printing and Graphics completed print orders for districts totaling

\$206,340

Production Printing and Graphic Services Purchased by Oakland County School Districts				
District	FY22	FY23	FY24	FY25
Avondale	\$4,952.00	\$4,491.00	\$6,219.42	\$5,823.00
Berkley	\$2,362.00	\$4,201.00	\$6,920.15	\$6,140.91
Birmingham	\$2,580.00	\$2,621.00	\$12,340.06	\$16,143.50
BloomfieldHills	\$26,521.00	\$19,097.00	\$29,514.68	\$24,268.61
Brandon	\$1,461.00	\$1,911.00	\$1,647.89	\$268.04
Clarenceville	\$229.00	\$329.00	\$264.60	\$377.01
Clarkston	\$385.00	\$3,095.00	\$2,595.27	\$3,695.24
Clawson	\$211.00	\$255.00	\$231.52	\$904.84
Farmington	\$1,988.00	\$1,831.00	\$4,397.65	\$4,841.37
Ferndale	\$5,433.00	\$3,522.00	\$3,854.28	\$4,413.32
HazelPark	\$4,007.00	\$4,415.00	\$3,982.68	\$5,546.44
Holly	\$46,183.00	\$46,560.00	\$48,712.92	\$3,683.85
HuronValley	\$12,627.00	\$8,433.00	\$10,796.56	\$5,231.93
LakeOrion	\$661.00	\$2,139.00	\$1,283.67	\$982.38
Lamphere	\$3,351.00	\$4,315.00	\$308.54	\$287.40
Madison	\$224.00	\$922.00	\$1,140.72	\$135.17
Novi	\$812.00	\$376.00	\$650.43	\$7,363.88
OakPark	\$1,799.00	\$1,168.00	\$435.80	\$-
Oxford	\$677.00	\$8,185.00	\$5,237.38	\$8,869.01
Pontiac	\$8,851.00	\$8,767.00	\$73,121.69	\$12,979.24
Rochester	\$69,453.00	\$73,106.00	\$6,764.71	\$4,498.90
RoyalOak	\$12,322.00	\$4,484.00	\$27,488.87	\$19,103.82
SouthLyon	\$16,918.00	\$11,933.00	\$6,651.90	\$4,767.87
Southfield	\$4,660.00	\$3,103.00	\$6,104.95	\$4,409.54
Troy	\$8,703.00	\$9,191.00	\$11,557.75	\$10,250.02
WalledLake	\$4,024.00	\$6,179.00	\$6,349.92	\$6,642.55
Waterford	\$37,372.00	\$37,566.00	\$66,626.60	\$29,852.55
WestBloomfield	\$16,393.00	\$23,555.00	\$12,520.40	\$14,859.64
Total	\$295,159.00	\$295,750.00	\$357,721.01	\$206,340.03

Fingerprinting

To assist Oakland County school districts in maintaining compliance with the state-mandated School Safety Legislation (2005 PA 129-131 and 138), Oakland Schools and the Oakland Association of School Personnel Administrators (OASPA), established a digital fingerprinting program.

This table shows the number of district staff who have come to Oakland Schools for fingerprinting services.



Number of Staff Fingerprinted at Oakland Schools				
District	FY22	FY23	FY24	FY25
Avondale	52	65	22	31
Berkley	3	3	1	2
Birmingham	28	20	15	21
Bloomfield Hills	91	55	33	41
Brandon School	24	16	4	13
Clarenceville	1	0	0	0
Clarkston	68	14	13	13
Clawson	8	10	0	2
Farmington	3	4	1	1
Ferndale	5	1	2	1
Hazel Park	0	0	0	1
Holly	29	16	11	20
Huron Valley	25	24	28	21
Lake Orion	5	8	6	6
Lamphere	14	0	0	0
Madison	1	0	0	0
Novi	1	0	0	1
Oak Park	3	0	1	0
Oxford	61	55	24	18
Pontiac	75	51	40	37
Rochester	148	332	225	134
Royal Oak	18	0	10	7
South Lyon	1	0	0	1
Southfield	0	7	0	0
Troy	12	6	3	3
Walled Lake	104	77	82	18
Waterford	119	116	63	91
West Bloomfield	10	6	7	9
Total	909	886	591	492

Does not count prints done for teachers through agencies.

Medicaid Services

Oakland Schools processes billings on behalf of Oakland County's 28 local school districts for health services provided in the schools for Medicaid-eligible special and general education students. This is a voluntary program provided at no-cost to the districts and helps to offset some of the health care costs these students incur. Important components of the program are monitoring and compliance services, which are provided to ensure the qualifications of personnel, medical necessity and outcomes of services provided and accuracy of billing.

The accompanying table illustrates resources provided to all Oakland County school districts as related to the Medicaid School Services Program.

The number of participating clinicians may change from month-to-month, therefore, an average number was used under the column "Average Number of Clinicians."

The column "Total Amount Reimbursed to LEAs in FY 2025" indicates the payments issued to the local school districts during fiscal year 2024-25 for the Direct Service Program, which includes direct health services and special education transportation, the Administrative Outreach Program, and Caring 4 Students totaling **\$16,676.658**.

The Medicaid School Services reimbursement methodology is cost-based and reconciles annually. The payments made to the local districts were distributed in June 2025 for the 2023-24 school fiscal year in accordance with the reconciliation time frame established.



Annual District Service Report for the Medicaid Department 2023-2024 Fiscal Year Paid Out June 2025									
LEA	Average Number of Clinicians	Medicaid Eligible Students**	Direct Service Workshop Participants	Speech Referrals Obtained	OT Prescriptions	(A) Administrative Outreach Program Approved Amount Per LEA	(B) Direct Service and Transportation Approved Amount Per LEA	(C) C4S Approved Amount Per LEA	Total Amount Reimbursed to LEAs in FY 2025 (A + B + C)
Avondale School District	110	1,625	31	35	1	\$23,231.67	\$297,408.00	\$22,759.00	\$343,398.67
Berkely School District	46	1,470	0	33	11	\$32,792.89	\$246,542.00	\$-	\$279,334.89
Birmingham City School District	107	365	0	26	15	\$48,404.80	\$725,931.00	\$-	\$774,335.80
Bloomfield Hills School District	128	524	0	55	32	\$68,720.72	\$569,474.00	\$-	\$638,194.72
Brandon School District	36	560	13	24	11	\$21,613.09	\$68,047.00	\$170,671.00	\$260,331.09
Clarenceville School District	18	762	0	50	16	\$11,578.99	\$70,601.00	\$48,861.00	\$131,040.99
Clarkston Community School District	215	905	96	87	43	\$71,319.95	\$501,608.00	\$-	\$572,927.95
Clawson City School District	62	291	12	24	9	\$9,582.38	\$78,467.00	\$-	\$88,049.38
Farmington Public School District	295	1,597	6	93	33	\$76,137.97	\$920,820.00	\$55,620.00	\$1,052,577.97
Ferndale Public Schools	83	1,252	25	96	28	\$20,287.19	\$242,159.00	\$78,774.00	\$341,220.19
Hazel Park City School District	194	1,678	17	113	47	\$60,100.03	\$570,253.00	\$40,138.00	\$670,491.03
Holly Area School District	97	1,027	0	-	-	\$20,949.20	\$255,153.00	\$18,632.00	\$294,734.20
Huron Valley Schools	225	497	27	144	50	\$80,872.33	\$702,367.00	\$-	\$783,239.33
Lake Orion Community Schools	113	926	7	52	6	\$68,516.18	\$648,310.00	\$-	\$716,826.18
Lamphere Public Schools	43	912	0	70	25	\$15,007.49	\$223,238.00	\$156,278.00	\$394,523.49
Madison Public Schools	33	571	0	43	19	\$8,024.35	\$64,552.00	\$10,409.00	\$82,985.35
Novi Community School District	128	478	16	41	14	\$55,727.92	\$343,915.00	\$23,917.00	\$423,559.92
Oak Park City School District	41	2,197	2	108	36	\$23,858.11	\$294,124.00	\$18,034.00	\$336,016.11
Oakland Schools	-	N/A	-	N/A	N/A	\$34,208.68	-	-	\$34,208.68
Oxford Area Community Schools	66	1,070	7	13	2	\$61,328.21	\$335,132.00	\$26,946.00	\$423,406.21
Pontiac Academy for Excellence (PSA)	-	-	-	-	-	\$-	\$-	\$-	\$-
Pontiac City School District	116	2,648	96	154	103	\$15,980.74	\$460,425.00	\$119,805.00	\$596,210.74
Rochester Community School District	429	1,110	16	216	28	\$156,783.30	\$1,788,809.00	\$108,650.00	\$2,054,242.30
School District of the City of Royal Oak	92	712	36	67	20	\$69,929.06	\$634,500.00	\$73,661.00	\$778,090.06
South Lyon Community Schools	103	891	13	94	32	\$70,703.88	\$590,182.00	\$-	\$660,885.88
Southfield Public School District	130	1,839	25	117	71	\$51,209.98	\$402,112.00	\$-	\$453,321.98
Troy School District	154	240	0	105	31	\$87,600.49	\$395,562.00	\$-	\$483,162.49
Walled Lake Consolidated Schools	210	2,124	16	194	86	\$113,617.07	\$1,062,078.00	\$-	\$1,175,695.07
Waterford School District	162	2,416	0	246	59	\$99,976.40	\$1,123,389.00	\$-	\$1,223,365.40
West Bloomfield School District	141	1,070	14	65	16	\$60,096.68	\$466,382.00	\$83,804.00	\$610,282.68
TOTALS	3,577	31,757	475	2,365	844	\$1,538,159.75	\$14,081,540.00	\$1,056,959.00	\$16,676,658.75

*Note: The number of participating clinicians may change from month to month, therefore an average number was used. Totals are from 2023-24 paid out in 2025 SY. LEAs had the discretion to opt out of Caring 4 Students (C4S).

Michigan Green Schools

Increasing numbers of Oakland County schools have achieved Michigan Green Schools status. To be designated a Michigan Green School, K-12 schools must successfully undertake a minimum of 10 out of 20 activities prescribed by state law and submit an application. Forty-one schools received the special designation of Evergreen Schools by successfully earning points for extra activities. Seven schools received Emerald status, and ten schools received the Green Schools designation. The Michigan Green Schools program began as a grassroots initiative in Livingston County in 2005. This effort resulted in Gov. Jennifer Granholm signing Public Act 146 into law in May 2006. Schools earning the Michigan Green Schools designation received an official Michigan Green Schools flag, a certificate signed by the Oakland County Executive and the Superintendent of Oakland Schools.



District	School Name	Designation
Berkley	Berkley High School	Evergreen
Berkley	Angell Elementary	Evergreen
Birmingham	Berkshire Middle School	Evergreen
Birmingham	West Maple Elementary	Evergreen
Birmingham	Birmingham Covington School	Evergreen
Birmingham	Pierce Elementary	Evergreen
Birmingham	Pembroke Elementary	Evergreen
Birmingham	Harlan Elementary	Green
Birmingham	Greenfield Elementary	Evergreen
Birmingham	Lincoln Street Alternative High School	Green
Birmingham	Bingham Farms Elementary	Evergreen
Birmingham	Wylie E. Groves High School	Evergreen
Birmingham	Quarton Elementary	Evergreen
Birmingham	Derby Middle School	Evergreen
Birmingham	Beverly Elementary	Evergreen
Bloomfield Hills	Bloomfield Hills High School	Emerald
Bloomfield Hills	North Hills Middle School	Green
Clarenceville	Clarenceville High School	Evergreen
Clarenceville	Botsford Elementary	Evergreen
Farmington	Gill Elementary	Emerald

District	School Name	Designation
Farmington	Farmington STEAM Academy	Evergreen
Farmington	Forest Elementary	Evergreen
Hazel Park	Webb Elementary	Evergreen
Novi	Novi Woods Elementary	Emerald
Private	Brookfield Academy West Bloomfield	Evergreen
Private	Four Corners Montessori Academy	Evergreen
Private	Our Lady of Sorrows	Evergreen
Private	Kingsbury Country Day School	Green
Private	Guardian Angels Catholic School	Evergreen
Private	Milford Cooperative Preschool	Emerald
Private	The Montessori School Crystal Lake Campus	Evergreen
Private	Japhet School	Evergreen
Private	Detroit Country Day High School	Evergreen
Private	Building Blocks Preschool - A Nature School	Evergreen
Rochester	Reuther Middle School	Evergreen
Rochester	University Hills Elementary	Green
Rochester	West Middle School	Evergreen
Rochester	Hugger Elementary	Evergreen

District	School Name	Designation
Rochester	Rochester High School	Evergreen
Rochester	Baldwin Elementary	Evergreen
Rochester	Dr. John M. Schultz Educational Campus	Emerald
Rochester	Musson Elementary	Evergreen
Rochester	Van Hoosen Middle School	Emerald
Rochester	Meadow Brook Elementary	Evergreen
Rochester	North Hill Elementary	Evergreen
Rochester	Rochester Adams High School	Evergreen
Rochester	Hart Middle School	Evergreen
Rochester	Brooksland Elementary	Evergreen
Rochester	Hampton Elementary	Evergreen
Rochester	Hamlin Elementary	Evergreen
Royal Oak	Addams Elementary	Evergreen
Royal Oak	Keller Elementary	Evergreen
Royal Oak	Oak Ridge Elementary	Emerald
Royal Oak	Royal Oak Middle School	Green
Walled Lake	Pleasant Lake Elementary	Green
Walled Lake	Walled Lake Northern High School	Green
Walled Lake	Oakley Park Elementary	Green
West Bloomfield	Doherty Elementary	Green

Digital Access

Want to access the most up-to-date copy of the District Service Report?

Scan the QR code below or visit osisd.us/dsr and scroll to "publications" to download a digital version.



OaklandSchools

Communication Services

2111 Pontiac Lake Rd.
Waterford, MI 48328
www.oakland.k12.mi.us
248.209.2145

In accordance with state and federal law, Oakland Schools does not discriminate, nor permit discrimination, on the basis of race, color, national origin, ethnicity, religion, sex, pregnancy or parental status, gender identity, gender expression, sexual orientation, disability, age, height, weight, marital status, military service, veteran status, genetic information, or any other legally protected status, in its educational programs and activities, employment, or enrollment. The District also provides equal access to the Boy Scouts and other designated youth groups. For questions or complaints regarding unlawful discrimination or harassment, employees should contact the Assistant Superintendent of Human Resources, Personnel Management and Labor Relations at (248) 209-2429 or HR@oakland.k12.mi.us. Students and others should contact the Civil Rights/Title IX Coordinator at (248) 209-2590 or Jacqueline.Zablocki@oakland.k12.mi.us.