

# Elementary Curriculum Presentation



**Harbor Team:** Principal - Jennifer Bisulca  
Assistant Principal - Tara Savage

**Manor Team:** Principal - Joann Krudis  
Assistant Principal - Rich Schwartz





# Full Time

## Integrated Co-Teaching Model

- Consistent Support for Students with Disabilities
- Improved Access to Grade-Level Curriculum
- Stronger Differentiation for All Learners
- Stronger Social-Emotional Outcomes
- Instructional Continuity Across the Day
- Shared Expertise and Professional Growth



LAKRETZ CREATIVE SUPPORT SERVICES  
WORKING TOWARD INCLUSIVE COMMUNITIES



# K-5 Mathematics Curriculum

## Illustrative Mathematics Program

Engaging and interactive approach to covering State standards

Math fluency and problem-solving skills

Building the bridge from conceptual to abstract understanding of mathematics

### How Did We Get Here?

District Math Committee

Continue to meet each month to reflect on areas of strength and growth

Determine the need for further professional development

Math Liaisons for each grade band

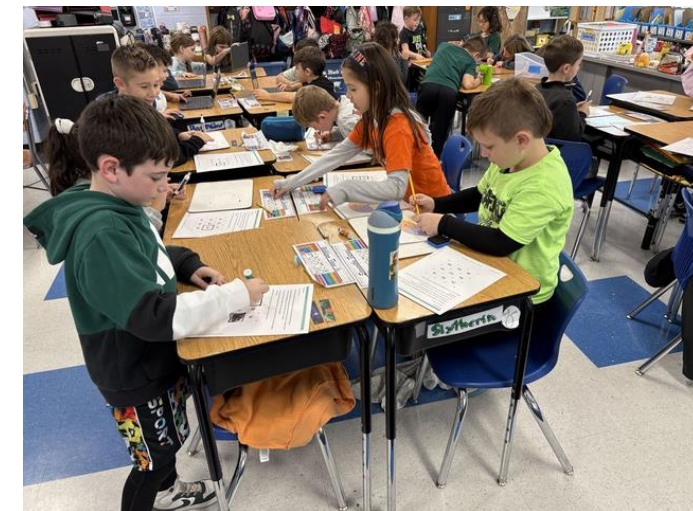
Continuous math support to build teacher content knowledge

### Resources

iXL

Khan Academy

Magma Math



# ENGLISH LANGUAGE ARTS CURRICULUM

Grades K-2

Heggerty

Phonemic Awareness

Fundations

Using Decodables for Small  
Group Targeted Instruction



Grades K-5

Advancing Literacy

Units of Study in Reading

Units of Study in Writing

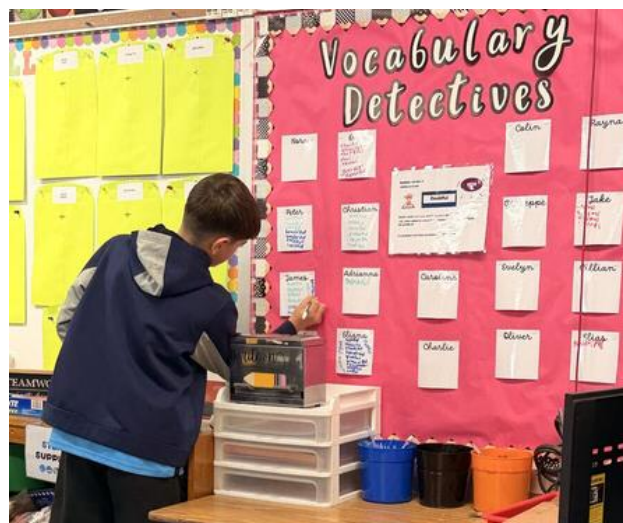
Instructional Focus: Building in  
Explicit Vocabulary Instruction

Resources

iXL

RAZ Kids

FunHub



# Social Studies Curriculum



## K-2 PNW BOCES



### Kindergarten:

- Community
- Citizenship

### First Grade:

- Rules & Laws
- We Are Family
- Unity and Community
- Economics

### Second Grade:

- Active Citizenship
- Rural, Urban, Suburban
- Geography of Communities



## 3-5 Nassau BOCES

### Third Grade:

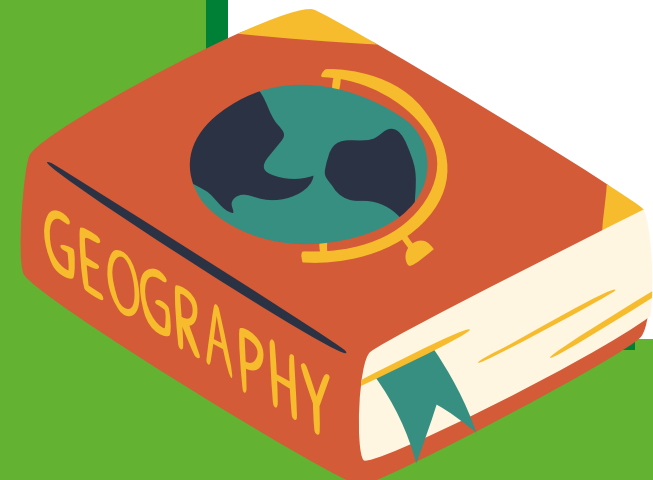
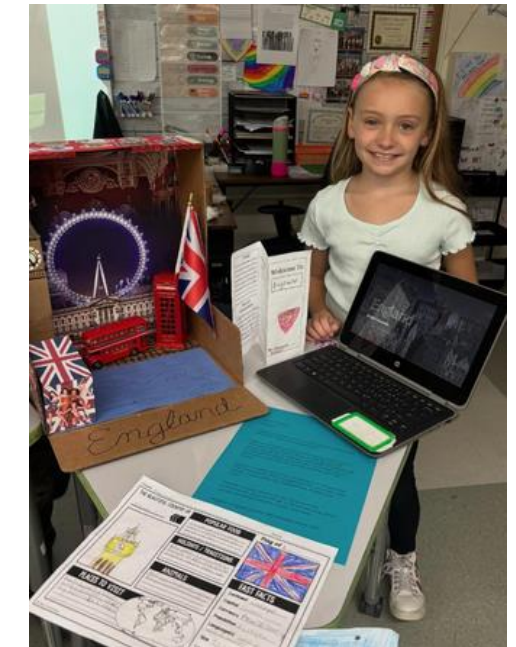
- Geography
- Latin America
- Africa & Asia

### Fourth Grade:

- Impact of People
- Geography & Government of the State of New York

### Fifth Grade:

- European Exploration of Western Hemisphere



# SCIENCE CURRICULUM



## Kindergarten Units:

- Animal Needs
- Plant Needs
- Severe Weather
- Weather Patterns
- Sunlight & Warmth
- Pushes & Pulls



- **3rd Grade Units**
- Fossils & Changing Environments
- Life Cycles
- Heredity, Survival, & Selection
- Weather & Climate
- Forces, Motion, & Magnets

## 1st Grade Units

- Animal Traits & Survival
- Plant Traits & Survival
- Day Patterns
- Night Patterns
- Light, Sound, & Communication

**MYSTERY**  
science

## 4th Grade Units

- Human Body, Vision, & The Brain
- Animal & Plant Adaptations
- Earth's Features & Processes
- Sound, Waves, & Communication
- Energy & Energy Transfer
- Electricity, Light, & Heat

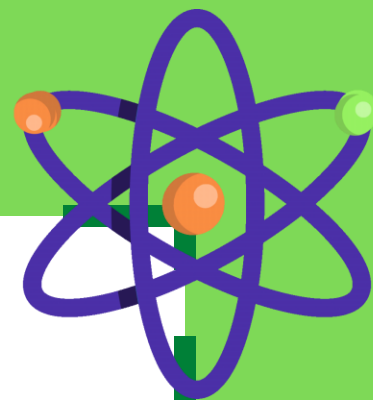
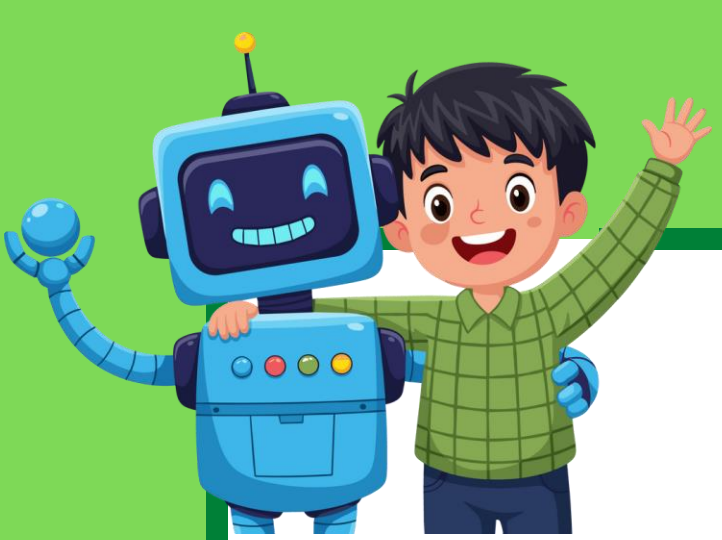
## 2nd Grade Units

- Animal Biodiversity
- Plant Adaptations
- Erosion & Earth's Surface
- Material Properties
- States of Matter

## 5th Grade Units

- Ecosystems & The Food Web
- Water Cycle & Earth's Systems
- Earth & Space Patterns
- Stars & Planets
- Chemical Reactions & Properties Of Matter





# STEAM/CODING INSTRUCTION

STEAM  
Night



NEW This Year!  
Kid OYO

Scratch  
Jr.

Robotics

STEAM  
Clubs



# TECH TOOLKIT



K-2 iPad Carts

3-5 Laptop Carts

Blookets



Fun Hub

Raz Kids

Class Link



# SPECIAL AREA CURRICULA

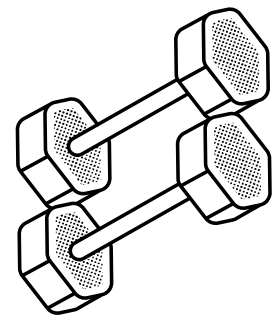
## Art

- Focuses on elements of design
- Process based teaching
- Exploring variety of mediums
- Fostering student expression



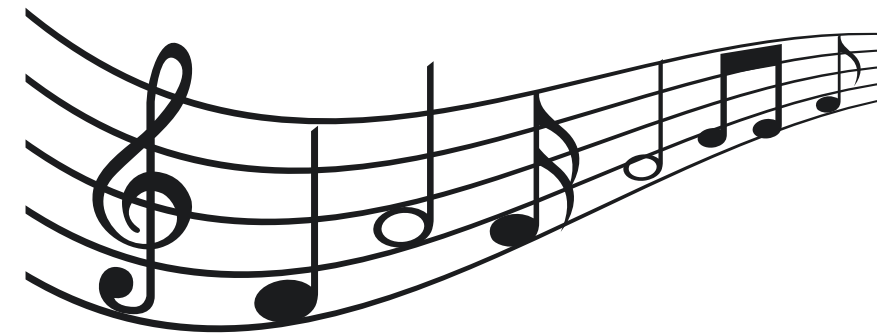
## Physical Education

- Physical fitness
- Introduction to cardiovascular fitness
- Sportsmanship
- Rules and fundamentals associated with sports and games
- Autumn Classic, use of outdoor space



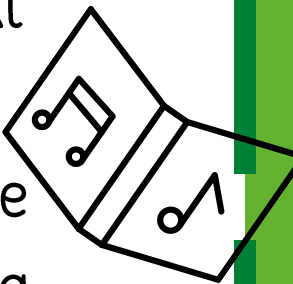
## Music

- Performance techniques
- Movement
- Singing
- Use of digital platforms to enhance learning



## Band/Chorus

- Small group lesson model for instrumental lessons
- Before-school choral rehearsals
- Instrument technique
- Rhythm and counting
- Rehearsal and performance etiquette
- Concert preparation





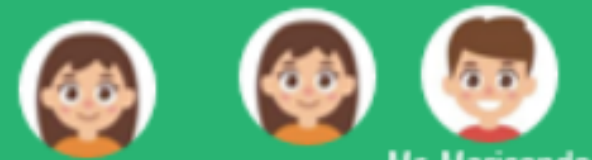
a trailblazing approach  
to educating our students

WE HAVE **LIFT** OFF!

**Welcome to a new kind of learning.**

With Seaford's newest interdisciplinary enrichment program, students will explore the pillars of research and investigation, project-based learning, wellness, and technology integration.

**MEET THE TEAM:**



Mrs. Rosenberg Ms. Kukla Mr. Maricondo

**LIBRARY & RESEARCH**

**L** Find books, conduct research, and have fun! The library is the school's center for active and engaged learning. Here, we cultivate digital citizens, skillful researchers, critical thinkers, makers, and enthusiastic readers.

**INNOVATION // PROJECT LEAD THE WAY**

**I** Young learners are naturally wired for discovery. You've seen it. Discovery is what makes them tick. PLTW taps into students' exploratory nature, engages them in learning that feels like play, and encourages them to keep discovering – now and for whatever future they choose.

**FIT MINDS & BODIES**

**F** Move your body, grow your brain. Students will discover the interconnectedness of healthy mind and movement through hands-on activities that nurture inquiry, mindfulness, growth, and healthy living.

**TECHNOLOGY & STEAM CHALLENGES**

**T** Science, Technology, Engineering, Arts, and Math spark curiosity, learning, and inquiry-based thinking. Using exciting new tools like Sphero, Cubelets, and BeeBots, students explore real-world applications, develop problem solving skills, and become critical and independent thinkers.



# STUDENT SUPPORT SERVICES



Physical Therapists

Occupational Therapists

Speech Therapists

ENL Teachers

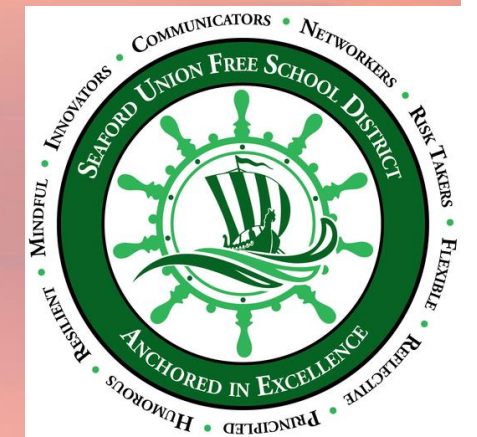
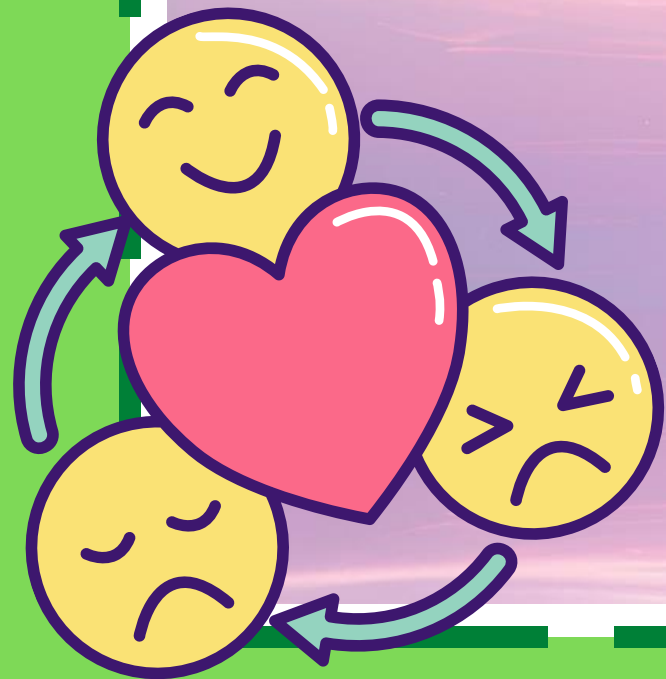
Social Workers

Psychologists

Elementary Access Counselor

Behavior Consultants

Nurses

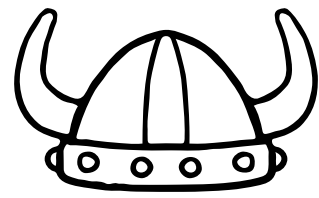




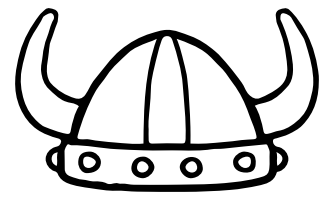
# SEAFORD SCHOLARS



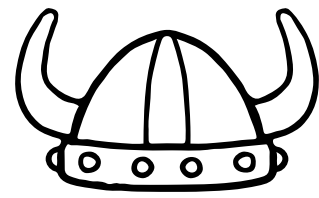
# EXTRA CURRICULAR VOYAGES



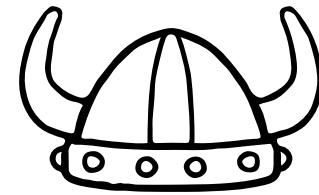
Student Council



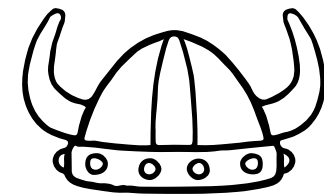
Math Olympiads



Technology Club



Physical Education Club



Acting Club



Jazz Band



Book Club



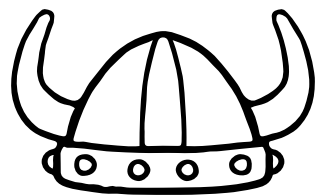
Gardening



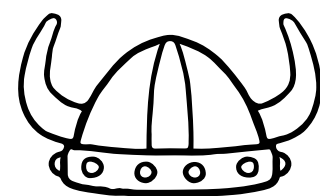
Lego



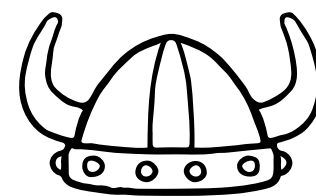
Leaders of Tomorrow



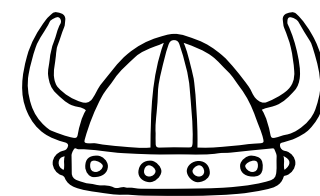
Safety Patrol



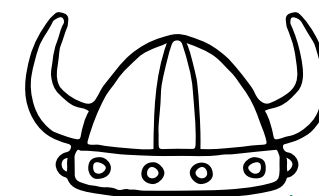
Manor Morning News



Art



STEAM/Makerspace



Young Acting Club





# PTA Partnership



Family Picnic

Halloween Parties

Red Ribbon Week

Family Bingo Night

Book Fairs

Snowflake Village

Winter Wonderland

PARP

Talent Show

Earth Day Planting

Turkey Trot

Manor Book Vending Machine

Harbor Sensory Room

Harbor Dugouts

Reflections

Harbor Day

Manor Student Rec Day

P.S. I Love You

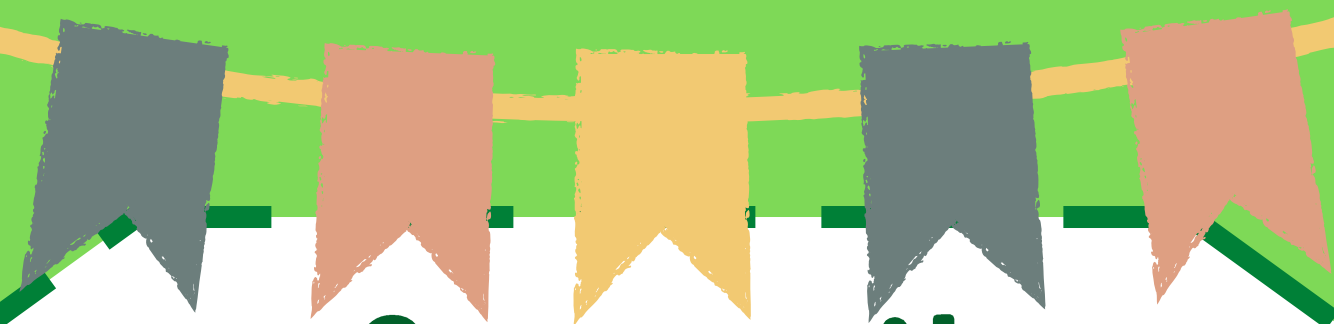
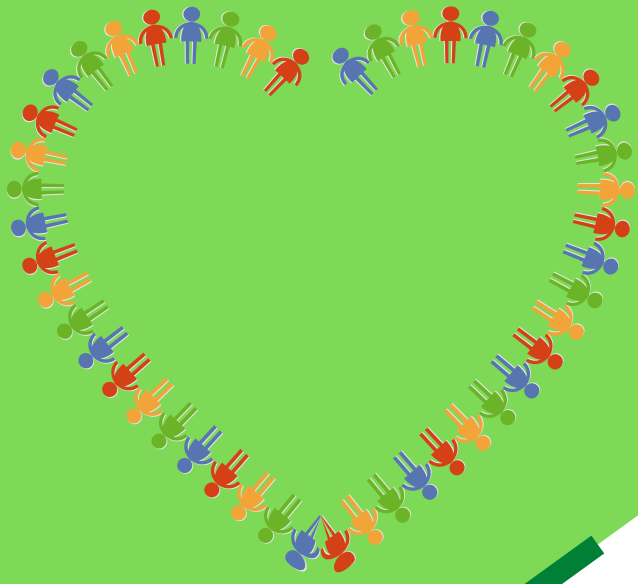
Recess Club

Special Person's Day

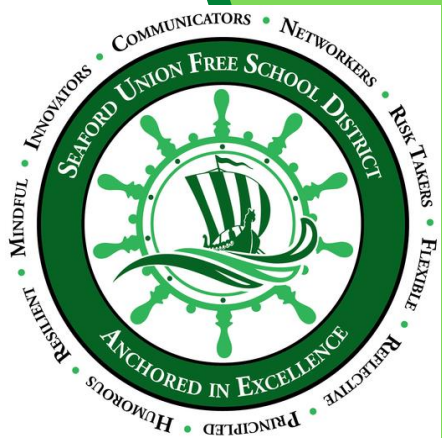


## SCHOOL OF EXCELLENCE





# Community Connections





# Sailing Ahead

Supporting Teachers with  
Best Practices in  
Mathematics

Implementing a  
Comprehensive MTSS  
Platform for Tier 2 and  
Tier 3 Progress  
Monitoring

Continuing Our  
Professional Development  
to Align with Curriculum



Nurturing the Full-time  
ICT Model

Creating Opportunities  
for Student Voice and  
Leadership

Parent Partnerships

Continue to Beautify our  
Buildings

## Go Vikings!





# Staying Connected



December 2025 Issue 5

## Manor Monthly

Seaford Manor Elementary School

**Principal's Message**  
Dear Parents,

As we enter December, a month filled with celebration, reflection, and meaningful connection, our classrooms continue to be alive with curiosity and growth. Each day, our students amaze us with their enthusiasm, hard work, and the joy they bring to learning. We are excited for a number of special events this month that truly showcase the heart of our school community. Our Winter Concert, Toy Drive, and Snowflake Village offer wonderful opportunities for students to share their talents, support others, and enjoy the magic of the season together. We look forward to celebrating these moments with your children.

As we head into the winter break, we encourage you to take time to rest, recharge, and enjoy family traditions—both old and new. These shared experiences create memories that last far beyond the holiday season.

Thank you for your continued partnership and for all that you do to support our school each and every day. We are grateful for our Manor community and wish you a warm, joyful, and healthy holiday season.

Happy Holidays!  
Mrs. Krudis and Mr. Schwartz

**Important Dates**

- 12/2- End of Trimester 1 and Parent Portal Opens
- 12-3- Parent Teacher Conferences- Evening
- 12/3 Manor All County Photoshoot with Hackmack
- 12/4- Half Day for Students
- 12/4- Parent Teacher Conferences- Afternoon and Evening
- 12/5- First Grade Field Trip to Bellmore Movie Theatre (9:30 am-12:00 pm)
- 12/10- BOE Meeting in APR (7:30 PM)
- 12/10- Student Concil Toy Drive Sing-a-long from 3:30 pm - 4:20 pm
- 12/11-12/12- Snowflake Village
- 12/15- In School Concert (9:30 am) & Holiday Concert @ HS (6:30 pm)
- 12/17- Unplug Night
- 12/19- First Grade Author Visit (9:30 am)
- 12/24-1/2 NO SCHOOL (Holiday Recess)

Instagram:  
[@Seafordmanorschool](#)

January 2026 Edition

## THE HARBOR NEWS

**Harbor Community Corner**  
**Seasons of Stories at the Harbor**  
Reading is so important because it sparks imagination, builds knowledge, and helps us grow as learners and thinkers. On Thursday, February 5<sup>th</sup> at 6:00 p.m., we are excited to celebrate our love of books at our annual Literacy Night with this year's special theme, "Reading Through the Seasons." Families will journey through activities that highlight how stories can inspire us in every season of the year, from winter adventures to sunny summer tales and everything in between. A Parent Square sign-up link will be sent to all Families on January 16<sup>th</sup>. Please keep an eye out as spots are limited, and we'd love for you to join us!

**Recess Reminders**  
Going outside and getting fresh air is our absolute favorite! Just a friendly reminder that if the feel like temperature is 32 degrees or above, we will be enjoying outdoor activities. We encourage our students to bundle up to stay warm while having fun! Gloves and hats are always a good idea!

**Principal's Message**  
As we welcome the new year, it's a meaningful time to pause, reflect, and look ahead with optimism. At Seaford Harbor Elementary, reflection is an essential part of learning—helping students recognize their growth, celebrate their accomplishments, and set purposeful goals for the months ahead. As we begin 2026, we invite our school community to embrace Reflection, our Seaford Scholar trait of the month, as a foundation for continued growth and achievement. Thank you for your ongoing partnership and support as we work together to nurture each child's success. Wishing you and your family a happy and healthy New Year!

Go Vikings!  
Mrs. Bisulca and Mrs. Savage

**Dates to Remember**

- January 6: Harbor PTA Meeting- 7:15 pm
- January 16: Board of Education Meeting- 7:30 pm (Elementary Curriculum Presentation)
- January 16: 80's for 80 Days of School!
- January 16-18: Kindergarten Registration  
\*Contact Mrs. Cella for questions
- January 18 and January 23: Harbor Family Bingo Nights
- January 23: PAISP Begins
- January 18: Martin Luther King Jr. Day (School Closed)
- January 23: Unplug Night
- January 23: Grades 3&4 Computer Testing Simulation

Instagram:  
[@Seafordharborpride](#)

THANK YOU!

