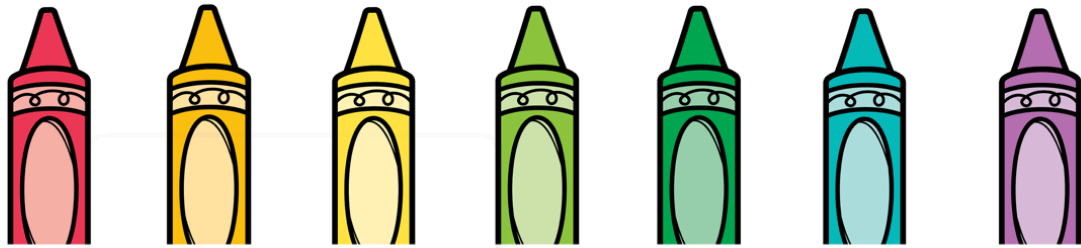


Kindergarten Program Guide

• • • • • welcome to • • • • •

KINDERGARTEN



2026-2027

Avonworth School District
Avonworth Primary Center
1310 Roosevelt Road
Pittsburgh, PA 15237
412-366-7171
www.avonworth.k12.pa.us





Message to Parents/Caregivers

Welcome to the Avonworth School District!

Another exciting kindergarten year is just around the corner, and we are thrilled to welcome your child to our Primary Center. These first few weeks are a special time as we get to know our new students, and we look forward to building a strong partnership with you throughout the year.

Our goal is to ensure your child has a happy, productive, and enriching experience. Our comprehensive program focuses on "the whole child"—supporting their physical, mental, social, and creative development alongside academic skills. We are committed to providing a stimulating environment where your child feels truly valued, confident, and inspired.

During these first few weeks, we will establish routines and begin discovering each child's unique interests and needs. We want our Kindergarten classrooms to be secure, joyful spaces where your child feels empowered to gain independence, make new friends, and explore the world around them.

Kindergarten sets the foundation for lifelong learning. While expectations are continuously evolving, we believe that the best way to meet these challenges is through partnership. Your support at home is the greatest gift to your child's education. We encourage you to celebrate their progress by asking them to share their daily work, showing them how much you value their effort and curiosity.

We are so enthusiastic about the year ahead and are honored to be a part of your child's educational journey.

Again, welcome to the Avonworth family!



Admission Requirements

Admission of kindergarten children begins in January and continues throughout the school term. Kindergarten Round-Up is held each spring. This program provides parents with an overview of the kindergarten program. More information is available on our website.

Children entering school for the first time must present a valid birth certificate as children must be **5 years of age before September 1** to be admitted to kindergarten. In addition, state law requires that all children entering any school for the first time in the Commonwealth of Pennsylvania be immunized against specified diseases before admission. Parents should refer to the “Health Program” section of this guide for further information.

Kindergarten Registration Procedures

Avonworth School District operates a comprehensive full-day kindergarten program. Registration procedures for the 2026-2027 school year are as follows:

- Kindergarten registration opens on January 5, 2026.
 - Only complete registration packets will be accepted.
 - Registration packets are available in the Primary Center office and on the district website at www.avonworth.k12.pa.us.
 - **A registration packet is considered complete if it contains ALL of the following:**
 - Registration Form-2 pages
 - Home Language Survey
 - Registration Statement
 - **Current** Immunization Records
 - Original Birth Certificate
 - Proof of Residency
 - **Proof of Residency must include:**
 - one of the following:
 - Driver’s License
 - Closing Papers
 - Lease Agreement
 - Rent Receipt
 - Residency Form
- AND**
- one of the following:
 - Utility Bill
 - Cable Bill
 - Paid Wage Tax Receipt
 - Guardian Form of Court Order



(All of these items must have the same address as those listed above.)

- Along with originals, please bring copies of proof of residency documents and Birth Certificate that can be left with the school.
- Following Kindergarten Round Up/Registration you will be asked to sign your child up for a school visit time held the week of June 1, 2026.
- You will receive a letter notifying you of your child’s tentative homeroom teacher assignment by August 15, 2026.

TYPICAL KINDERGARTEN DAILY SCHEDULE

8:45-9:05	Arrival
9:05-9:15	Morning Meeting <ul style="list-style-type: none">• Greeting• Calendar/Weather/Days of School• Daily Schedule• Activity• Closure
9:15-11:00	ELA <ul style="list-style-type: none">• Phonological Awareness• Phonics• Interactive/Shared Reading• Handwriting
11:10-12:05	Recess and Lunch
12:10-12:50	Math
12:55-1:40	Specials
1:45-2:00	Snack
2:00-2:30	WIN
2:30-3:10	Centers/Social Studies/RIASEC
3:10-3:15	End of Day Routine
3:20-3:40	Dismissal

CLASS
schedule

Core Curriculum

English Language Arts

Avonworth Primary Center follows a comprehensive program from a variety of resources.

- *Foundations* by Wilson
- *Phonemic Awareness Curriculum* by Dr. Michael Heggerty
- *Wit and Wisdom* by Great Minds
- *Geodes* by Great Minds (in alignment with Foundations)

Throughout the year, the pre-reading and reading skills of each student will be assessed in order to individualize instruction and target the needs of each learner. Lessons addressing students' specific needs will be both group and individual in nature.

Mathematics

Avonworth Primary Center follows Great Minds *Eureka Math* series for Kindergarten.

- *Eureka Math* is organized into 6 modules and separated into topics A – H.
- There is an intense focus on key concepts that layer over time, creating enduring knowledge.
- *Eureka Math* uses the same models and problem-solving methods throughout the entire program to solidify concepts.
- There are a variety of assessment resources including sprint checks to provide both formative and summative feedback to teachers and parents.
- *Zearn* is an interactive application and tool that provides technology integration in conjunction with *Eureka Math*.

Science/Social Studies

Our Science and Social Studies curriculum is embedded into the students' school day across various subjects. Some of those resources include:

- *Wit and Wisdom*
- World of Work (RIASEC)
- Scholastic News Magazine-Let's Find Out



Special Area Classes

STEM

In STEM, students will be introduced to the following units: Making, Block Coding, Engineering & Design, Digital Citizenship, Robot Exploration, Building Circuits, and Digital Storytelling & Animations. This course will allow students to think critically and creatively in order to become future ready citizens in our dynamic world.

Art

The art concepts of form and space, color and value, texture, shape, and line provide the framework for the curriculum. This program helps children increase their skills and basic knowledge of art, as well as provides the opportunity to work creatively.

Physical Education

Participation in physical activity is critical throughout the kindergarten year. Such activity builds positive attitudes toward both individuals and participation on teams. The emphasis of all instruction is skill development and involvement in the activity. Additionally, children have the opportunity to develop lifelong habits of physical activity and fitness.

Music

The kindergarten program provides a variety of experiences including singing, movement, music appreciation, music reading, composition, and improvisation.

Library

In the library, students learn about different genres and diverse literature through positive reading experiences.

Investigations

Investigations is a special that is designed to give Kindergarteners an opportunity to explore science through phenomenon-based learning. Students will tap into their natural interests and abilities through carefully planned open-ended, inquiry-based explorations. Every class will be engaging, and exciting, and leave students asking questions!



Assessment and Reporting Progress

Assessment

Assessment is the process of collecting information to make instructional decisions about students. The use of both formal and informal assessment tools, including Acadience (Indicators of Basic Early Literacy Skills) provides a comprehensive picture of students' achievement as they progress through an instructional program. Whether formal or informal, assessment is used to differentiate instruction in order to target the needs of each learner.

Report Card and ALMA

Report Cards are issued on a trimester schedule at Avonworth Primary Center. Classroom information and announcements will be available on ALMA, the district's online content management system. Account information will be distributed to parents and caregivers during the first month of school. Please activate your ALMA account and register your email to receive important classroom, school, and district updates. Also, please be sure to add your **Emergency Contacts** to your page as this is how we will get in touch with someone if we cannot get hold of you. The Avonworth School District promotes a "Going Green" electronic approach for announcements, newsletters, flyers, etc. **Please remember to keep your email updated throughout the year in ALMA.**

In addition, scheduled parent-teacher conferences are held twice each year for the purpose of communicating with parents about student's progress. Parents are encouraged to contact teachers at any time during the school year when they have questions or concerns about their child's progress.

Testing Program

In addition to the typical classroom assessments used by teachers to determine student growth, the Northwestern Evaluation Association Measure of Academic Progress (MAP) test will be given two times throughout the year.

Special Services

Special Services include learning, emotional, gifted support, and English as a Second Language (ESL). Please contact Dr. Justin Karam, Director of Student Services at jkaram@avonworth.k12.pa.us for details.

Primary Center Counseling

Through individual, group, and classroom contacts, our Primary Center counselor facilitates students' social, emotional, and academic development and growth in the general school and classroom environments. Consultation is available to parents on academic, social, and emotional concerns.



alma



nwea



Health Program

Immunizations

Every kindergarten student attending school in the Commonwealth of Pennsylvania must be immunized against the following diseases before being admitted to school:

4 doses – Tetanus, Diphtheria, and Acellular Pertussis. One dose is to be given on or after their fourth birthday.

4 doses – Polio (4th dose given on or after 4th birthday and at least 6 months after previous dose given.)

3 doses – Hepatitis B.

2 doses – Measles, Mumps, and Rubella.

2 doses- Varicella Vaccine (Protection against Chicken Pox) or evidence of immunity.



State law requires that proof of immunization, serology results, or doctor's verification be provided before any child can be admitted to school. Families are encouraged to obtain the needed immunizations from their physicians. However, the Allegheny County Health Department does offer the required vaccines at a reduced cost. To obtain information about clinic locations and times, contact the Allegheny County Health Department Infectious Disease Program at 412-578-8060.

Exclusion from School

The Pennsylvania and Allegheny County health departments require the exclusion of all students who are suspected of or have been diagnosed as having the following communicable diseases:

Illness	A student may return to school
Strep Throat, Tonsillitis, Scarlet Fever, and Conjunctivitis	24 hours after beginning appropriate treatment.
Chicken Pox	When all vesicles are crusted; approximately six days from eruption of first crop of vesicles.
Scabies and Ringworm	Until judged non-infective by a physician or school nurse.
Impetigo	When pustules have healed and are judged non-infective.

The school nurse should be consulted if there are any questions or concerns regarding readmission to school.



Stated Mandated Health Screening

- A physical examination is required upon entering kindergarten.
- A dental examination is required upon entering kindergarten.
- Tuberculosis testing is required by the Allegheny County Health Department.

Although it is recommended that these state and county mandated examinations/tests be conducted by the student's regular family physician, they are also provided by the school district with written parental permission and given by an approved physician and/or dentist and the school nurse.

The following examinations are administered by the school nurse:

- Vision screening tests
- Audio screening tests
- Height and weight

Parents will be notified if their child fails any part of these examinations or screenings. All health related forms are available on our website at www.avonworth.k12.pa.us under Departments/Health Services.

Sickness and Injuries

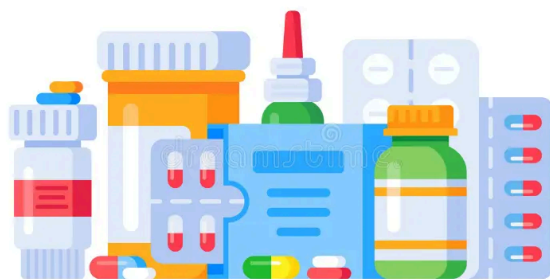
Students should not be sent to school if they are not feeling well. Students who become ill or injured at school will be sent to the nurse. When children become ill at school, it is the parent's responsibility to provide transportation from school to home. Emergency care cards are completed by parents annually. The cards enable the school nurse to see that children receive the best possible care in case of an emergency.

Home-incurred accidents are not the responsibility of the school.

Administering Medication at School

A copy of the school medication policy is available on the Avonworth School District website. Parents are advised to retain the policy and accompanying form for possible use throughout the school year. The form, to be completed by a parent and physician, should be taken along to any doctor's appointment when medication is anticipated.

Absolutely no medication will be administered at school unless all requirements of the medication policy are met.



General Information

Attendance

Regular school attendance is extremely important and should be reinforced. Children achieve more and feel better about themselves when instruction is continuous and when a sense of belonging is established within the classroom.

The school laws of Pennsylvania classify absences as unexcused (illegal). The only exceptions are illness of the pupil, death in the immediate family, quarantine, and “exceptionally urgent reasons.”

When it is necessary for a child to be absent from school, parents/caregivers should email the school secretary by the start of the child’s school day at apcoffice@avonworth.k12.pa.us. Parents must email each day the child is absent. This email helps to ensure each child’s safety.

When children return to school after any absence, they must bring with them an excuse signed by their parent or caregiver stating the reason for absence and the dates of absence.

Parents/caregivers are urged to restrict travel which would result in children missing school. Lack of continuity disrupts instruction for the child and the class.

Tardiness

A child who arrives after the scheduled start of the school day (9:00 a.m.) is required to present a note of explanation from his or her parent or caregiver.

Early Dismissal

No child will be excused at any time other than regular dismissal times without permission from the parent or guardian. When a home emergency arises and a request for a child to leave school is made, the person making the request must be personally identified as the parent or as the one bearing the written request of the parent/caregiver and the child must be met in the school office. Presentation of identification will be required.

Every child must go directly home from school unless accompanied by an adult, or unless a written request signed by a parent or caregiver is made to the school for a departure from the child’s regular route home. Children may not ride or walk home with a friend, for example, without written permission. Telephone requests cannot be honored.



Parent Pick Up Procedures-After School

Parent Pick Up is inside the gym lobby from 3:25 p.m. – 3:40 p.m. Parents/Caregivers should notify their child's teacher in writing that their child is to go to Parent Pick Up including the name of the adult picking the child up.

Parents/caregivers will meet the designated teacher at Entrance 9, doors closest to the playground.

Parents/caregivers give the name of the child they are picking up, their own name and show photo identification (license). Parents/caregivers need to show their identification each time they pick up their children. The child is then released to the adult. If the name of the adult picking up the child does not match the name provided on the parent pick-up note, the child will not be released. The adult will have to report to the office and a phone call will be made to the child's parent verifying that the child can leave with this adult.

We ask that you refrain from calling the office late in the day to add your child to the Parent Pick-Up list. It becomes difficult to inform the child, the classroom teacher, and the monitor that a child is being added to the list at such a late time. Whenever possible, we suggest that students take district-provided transportation home.

Transportation

Transportation to and from school is a service provided by the school district for kindergarten students. All children are expected to follow the rules and guidelines established by the school district or this service may be revoked.

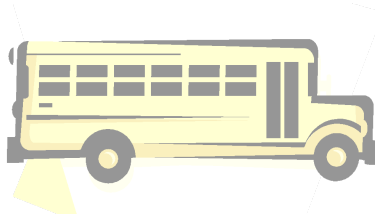
Bus drivers are responsible for the discipline and safety of the children while they are on the buses. Transportation privileges may be taken away by the school principal when misconduct is reported and found.

Bus schedules are available no later than the week before school starts in ALMA. All children are expected to ride their assigned bus to and from school. Students may not ride a bus to which they are not assigned.

Kindergarten students must have a parent/caregiver waiting at the bus stop to escort the child home. If no parent/guardian is at the stop to meet the child, he/she will not be permitted to exit the bus. The bus will return the student to the Primary Center.

Before School and After School BASE Program

Morning care will be offered by the YMCA Before and After School Enrichment (BASE) Program from 7:00 a.m. – 8:35 a.m. each morning school is in session. Information concerning this program may be obtained from the school office. **When school is on a 2-hour delay, the BASE Program will be on a 2-hour delay.** The YMCA of Greater Pittsburgh offers an after-school program (BASE) from 3:30 p.m.– 6:00 p.m. when school is in session. Information concerning this program may be obtained from the Primary Center office.



Breakfast and Lunch Programs

School breakfast and lunch programs are provided at a reasonable cost to each family. Breakfast and lunch menus are available on the district's website under Departments/Nutrition Services. Forms are available in each school office for families who may qualify for free or reduced-price breakfasts and lunches. Participation is based on annual family income.

Recess

Outdoor play time is scheduled once daily, weather permitting, and is supervised by our staff. Children are to be appropriately dressed for the weather. During inclement weather, the students will have indoor recess.

Security

All visitors to the school, including parents/caregivers, must report to the office whenever entering the building and sign in with the building secretary as well as wear a visitor badge. Parent volunteers must also have all of the required clearances to assist in the classroom.

A driver's license is required for classroom visitors.

Emergencies

Emergencies affecting any or all of the Avonworth School District will be made over local radio and television stations as well as through our School Messenger alert phone messaging system. In addition, please check our website at www.avonworth.k12.pa.us or social media. Notification scenarios include emergencies, school delays, and closures.

In the event of an emergency evacuation when children are already at school, parents/caregivers will be notified via School Messenger, website and social media as to procedures for pick up. Parents who work or are not at home are urged to plan with their children where to go should such a situation arise. The school will request this information from families in the early fall of the school year.

Where to Turn for Help

Your source for information, first and foremost, is the classroom teacher and the building principal. The following list will help you know where to turn to find the information you need when you have additional questions or concerns.

Avonworth Primary Center

1310 Roosevelt Road
Pittsburgh, PA 15237
(412) 366-7171 - phone
(412) 837-1688 - fax
Website: www.avonworth.k12.pa.us

Avonworth School District Administrative Offices

258 Josephs Lane
Pittsburgh, PA 15237
(412) 369-8738 - phone
(412) 837-2551 - fax
Website: www.avonworth.k12.pa.us



Avonworth Board of School Directors

John Brandt, President
Yu-Ling Cheng, Vice President
Danielle White, Treasurer

Adam Livingston
Justin Panuski
Nora Silvey
Jessica Opalko
Jenna Paulat
Amy Tokar

Avonworth School District Administration

Jeff Hadley Ed.D. -----Superintendent
Jillian Bichsel Ed.D.-----Assistant Superintendent
Cindy Donovan-----Confidential Secretary to the Superintendent
Jennifer Sheridan -----Director of Fiscal Management and Support Services
Justin Karam Ed.D.-----Director of Student Services
Kevin McCabe-----Director of Technology and Information Systems
Brant Colamarino -----Supervisor of Buildings and Grounds
Kurt Kesneck -----Interim Director of Athletics
Tracey Eck-----Payroll Specialist/Supervisor of Transportation
Melissa Schad-----Director of Food Services
Keera Dwulit, Ed.D.-----High School Principal
Michael Hall, Ed.D.-----Middle School Principal
Michael Schmitt-----Middle School Assistant Principal
Kaitlin Remensky, Ed.D.-----High Assistant Principal
William Battistone, Ph.D.-----Elementary School Principal
Robert Eastwood-----Primary/Elementary Assistant Principal
Scott Miller, Ph.D.-----Primary Center Principal

The Avonworth School District will not discriminate in its education programs, activities or employment practices, based on race, color, national origin, gender, religion, ancestry, disability, union membership, or any other legally protected classification. Announcement of this policy is in accordance with state and federal laws, including Title IX of the Education Amendments of 1972, and Sections 503 and 504 of the Rehabilitation Act of 1973. Employees and participants who have an inquiry, complaint of harassment or discrimination, or who need information about accommodations for disabled persons, should contact:

Dr. Justin Karam
Director of Student Services
1310 Roosevelt Road
Pittsburgh, PA 15237
412-366-7171 Ext. 1901