



# American School Foundation of MONTERREY

asfm.edu.mx  
 Tel (+52) 81 4284-1990  
 Av. Ignacio Morones Prieto #1500  
 Col. San Isidro, Santa Catarina, NL México 66190

## ASFM OVERVIEW

The American School Foundation of Monterrey (ASFM) is a private, secular, non-profit co-educational day school serving approximately 2,400 students from Nursery to 12th grade.

It offers an academically rigorous university preparatory program aligned with American independent school curricular expectations. ASFM is accredited by the New England Association of Schools and Colleges (NEASC) as well as the Mexican Secretary of Education (Secretaría de Educación Pública). Both the U.S. High School diploma and the Mexican Bachillerato programs of study are offered.

All students graduate with the U.S. High School diploma. Additionally, 98% of the Class of 2025 received the Mexican Bachillerato. **All classes are taught in English** except Spanish classes and Mexican Studies.

## ADMINISTRATIVE AND COUNSELING TEAM

**Director/Superintendent:** George Stewart  
**MS/HS Principal:** Juan David Lopez  
**HS Dean of Academics:** Jill Rothschild  
**HS Dean of Students:** Alejandra Cantu  
**HS Counselors:**  
**9th Grade:** Steve McDonald  
**10th Grade:** Kacy Brubaker  
**11th Grade:** Juan Jose Moreno  
**12th Grade:** Priscila de Alba  
[priscila.dealba@asfm.edu.mx](mailto:priscila.dealba@asfm.edu.mx)  
**College Counselors:**  
 Luly Treviño  
[luly.trevino@asfm.edu.mx](mailto:luly.trevino@asfm.edu.mx)  
 Majo Lamadrid  
[mariajose.lamadrid@asfm.edu.mx](mailto:mariajose.lamadrid@asfm.edu.mx)

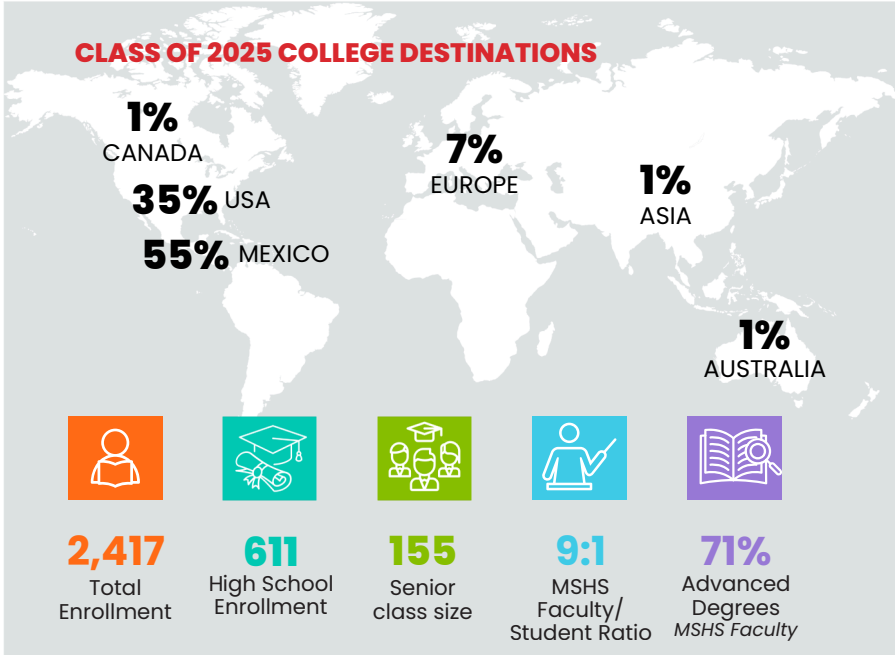
## OUR LEARNING COMMUNITY

Founded in 1928, ASFM is rooted in a legacy of academic and personal excellence with a vision of ensuring that every child can reach and exceed their personal best. Our faculty comes from 11 different countries. 72% come from Mexico and 28% from abroad. Our student body is 90% Mexican with 10% coming from 18 countries from around the globe. 99% of ASFM graduates go on to university studies.

## NATIONALITIES IN OUR SCHOOL



## CLASS OF 2025 COLLEGE DESTINATIONS



## CO-CURRICULAR ACTIVITIES & ATHLETICS

ASFM students seek to go beyond. Some of our MSHS activities include:

**Student-led clubs:** Ambassadors, Center for Community Engagement, Peer College Counselors, Multicultural Club, National Honors Society, THOTH (Math and Logics Club), Student Council, among others

**Theater:** 2 productions per year.

**Varsity sports:** Basketball, Flag Football, Soccer, Track & Field, and Volleyball

**Extended learning classes:** Chess, French, Violin, Choir, Karate, and Robotics among others.

*Participation in co-curricular activities is optional.*





**TEACHING AND LEARNING PHILOSOPHY AT ASFM**

Our school fosters a culture of academic and personal excellence, offering a rigorous and diverse curriculum that builds a strong academic foundation while tailoring to each student’s needs, talents, and interests, empowering them to exceed their personal best to uplift their community.

**CLASSES AND AP COURSES OFFERED BY AREA**

ASFM provides comprehensive and individualized counseling support so students can choose varied and flexible pathways in their courses. Our HS Course Catalog shows the suggested pathways by discipline. AP courses are open to all students who meet the prerequisites and abide by the AP rigorous course agreement.

ENGLISH	SOCIAL STUDIES	BUSINESS & TECHNOLOGY	
English 9, 10, 11, 12 Pre-AP English AP English Language AP English Literature Journalism I Applied Journalism* Public Speaking Creative Writing AP Research	Socials - World History 9 Socials - World Issues 10 Mexican Studies Philosophy Sociology Model United Nations 1 & 2 Model UN Secretariat^^ AP Comparative Government & Politics AP Economics^ AP Human Geography AP Macroeconomics AP Psychology AP World History AP Seminar AP Research 12	Computer Science 9 Accounting Applied Engineering Design Business Law Business Management Computational Thinking I & II Digital Media & Content Creation***	Digital Design I Digital Design II*** Entrepreneurship Intro to Business Marketing Personal Finance AP Computer Science A AP Computer Science Principles
MATHEMATICS	SPANISH	FINE ARTS	
Integrated Math I Integrated Math II Pre-Calculus Intro. Calculus Integrated Math Honors I Integrated Math Honors II Pre-AP Pre-Calculus Statistics and Probability Discrete Math *** Math Analysis Honors AP Statistics AP Calculus AB AP Calculus BC	Spanish 9, 10, 11 Spanish Language & Communication 12 Spanish Analysis & Creative Literature 12 AP Spanish Literature Spanish LC Level 1-2 & 2-3	HS A Capella Choir Art 9 Drama 9 Art: Drawing Art: Painting Art: Adv. Painting Digital Photo. Film Production	HS Band Improvisation Play Production TV Production Visual Art Journal Yearbook Production** AP Studio Art 2D Design AP Studio Art 3D Design
SCIENCE		PHYSICAL EDUCATION & HEALTH	LEARNING SUPPORT / OTHER
NGSS Physical Science 9 NGSS Life Science 10 Chemistry Physics Anatomy Environmental Science Human Biology	Organic Chemistry AP Biology AP Chemistry AP Environmental Science AP Physics 1 AP Physics 2 AP Physics C	Physical Education & Health 9, 10-12 Strength & Conditioning	Accelerated English 9 Accelerated Math 9 Pre-Calc. Fundamentals SES HS

*Additional Advanced Placement courses and elective courses are offered to ASFM students through our partnership with OneSchoolhouse and K12.*

*\*Courses require an application and selection process.  
^ AP Economics is a year-long course that covers the content of AP Macroeconomics and AP Microeconomics.  
\*\*Course discontinued after the 2024-2025 cycle, became a Pass/Fail elective in 2025-2026 cycle before transitioning to a club.  
\*\*\*Courses offered in alternating years, not in 2025-2026 cycle.  
^^MUN Secretariat requires an application and selection process, and became an elective in the 2025-2026 cycle.*

**ASFM GRADUATION REQUIREMENTS (26 – 28 CREDITS TOTAL)**

English	4	Business & Techonology	1	Physical Education	0.5
Math	4	Spanish	4	Fine Arts	1
Science	4	Social Studies	4	Electives up to	5.5

**STUDENTS ARE REQUIRED** to complete 100 hours of community service prior to graduation.



**ASFM COURSE CATALOG**

CLICK OR SCAN



**GRADING SYSTEM AND GRADING SCALE**

ASFM utilizes a competency-based approach to grading. Students must demonstrate minimum competency (3.0 or higher) in each course to earn a passing grade. We hold our students to a high academic standard, and give them ample opportunity and support to reach this goal through small group instruction and personalized support. Our grading system is based on formative and summative assessments. Formative assessments provide timely and effective feedback and inform teaching, but do not count towards a student’s GPA. Summative assessments are conducted at the end of each learning unit. Students’ performance on summative assessments only determine their course grade.

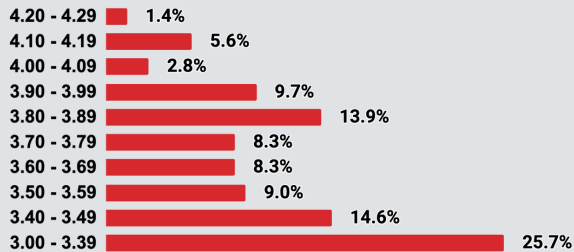
**COURSE GRADE      PERFORMANCE LEVEL      PERFORMANCE LEVEL DESCRIPTOR**

3.7 to 4.0	COMPLEX UNDERSTANDING	Learners have reached the highest levels of cognitive demand and can consider multiple viewpoints to extract valuable insights.
3.4 to 3.69	CONNECTED UNDERSTANDING	Learners think critically and apply and transfer knowledge and skills to engage in conceptual/rich tasks.
3.0 to 3.39	COMPETENT UNDERSTANDING	Learners have met the course lesson level outcomes and can independently recall, restate and reproduce knowledge.
Below 3.0	NOT PASSING	The student failed to demonstrate the expected knowledge and skills within the course context.

ASFM adds an additional grade weight of 20% for AP courses and 10% for honors and PreAP courses to the end of semester GPA.

**WEIGHTED GPA**

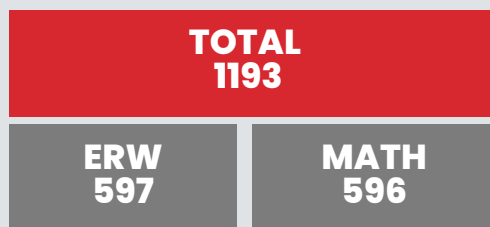
**GRADE DISTRIBUTION CLASS OF 2026 Grades 9-11**



Highest GPA was 4.25.  
Reported GPA only reflects courses taken at ASFM; previous school or semester away transcripts will be provided.

As of the 2025-2026 cycle, only students with a more rigorous 3.80+ are awarded Honor Roll for each semester the GPA is accomplished, and President’s award for each academic year it is maintained.  
**ASFM does not rank students.**

**AVERAGE SAT RESULTS Class of 2025**



**144 students took the SAT, 91% of the Class of 2025.**

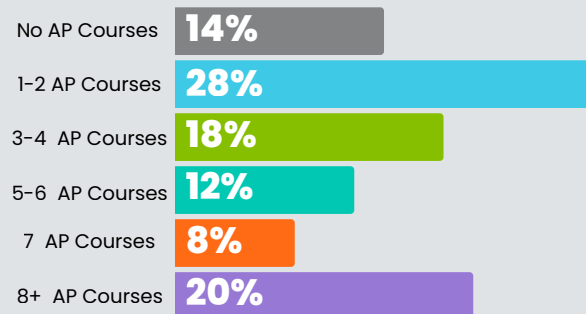
Starting in the 2024-2025 school year, all juniors are required to take the SAT.

**AP PROGRAM AT ASFM**

**ASFM students are restricted to 7 total AP courses** during their four high school years: 1 AP course in Grade 10, 3 AP courses in grades 11 and 12. Students may request special consideration. All students enrolled in an AP course are required to sit for the exam. **67% of eligible students Grades 10-12 sat for AP exams.**

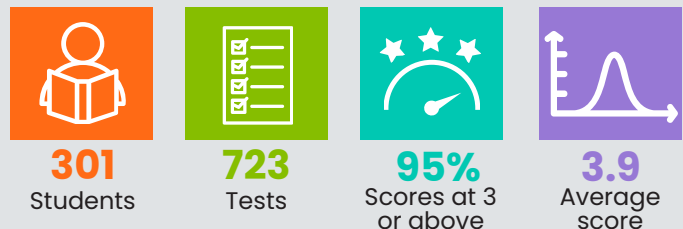
**AP ENGAGEMENT CLASS OF 2025**

**COURSE LOAD THROUGHOUT 4 YEARS OF HS**



20 students in Class of 2025 earned the AP Capstone Diploma.

**AP PROGRAM RESULTS 2025**



## 2025 – 2026 ASFM SCHOOL PROFILE

### UNIVERSITY ACCEPTANCES

ASFM Seniors from the Classes of 2023–2025 received offers of admission to the following colleges and universities. Universities in bold represent where our students matriculated, if it was more than one student, that number is in parenthesis.

#### ASIA

**Yonsei University**  
Korea University  
Sungkyunkwan University  
Hanyang University

#### CANADA

Centennial College  
**McGill University**  
**OCAD University**  
Sheridan College  
**Simon Fraser University**  
**The University of British Columbia (4)**  
Toronto Metropolitan University  
University of Alberta  
**University of Calgary**  
**University of Guelph**  
University of Ottawa  
**University of Toronto (3)**  
**University of Victoria**  
University of Waterloo  
Western University  
York University

#### EUROPE

Acibadem University  
**Bath Spa University**  
Bournemouth University  
**Constructor University (3)**  
CUNEF Universidad  
Durham University  
EHL Hospitality Business School  
ESCP Business School  
Franklin University Switzerland  
Glion Institute of Higher Education  
**IE University (11)**  
**Instituto Europea di Design Barcelona (2)**  
**Instituto Europea di Design Madrid**  
**Istituto Marangoni (3)**  
Imperial College London  
John Cabot University  
**King's College London (2)**  
Lancaster University Leipzig  
**Les Roches Schools of Hotel Management**  
London School of Economics  
Nuova Accademia di Belle Arti Milano  
Polimoda – The Fashion School  
**Regent's University London**  
University of Manchester  
University of Navarra  
**University of St Andrews (2)**

#### MEXICO

**Centre For Advanced Studies In Design of Monterrey (CEDIM)**  
**Facultad Libre de Derecho de Monterrey (2)**  
**TEC de Monterrey (121)**  
**University of Monterrey (UDEM) (95)**

#### UNITED STATES OF AMERICA

**American University**  
**Arizona State University**  
Auburn University  
Austin College  
Babson College  
Baylor University  
Belmont University  
Bentley University  
**Berklee College of Music**  
**Binghamton University (2)**  
**Boston College (3)**  
**Boston University (5)**  
California College of the Arts  
California Institute of the Arts  
California State University  
**Carnegie Mellon University**  
Case Western Reserve University  
**Champlain College**  
Chapman University  
Clemson University  
Colorado School of Mines  
**Columbia University**  
**Cornell University**  
Cullinary Institute of America  
**Dartmouth College**  
Drexel University  
Duke University (3)  
Emerson College  
**Emory University**  
**Fordham University (3)**  
George Mason University  
**George Washington University (2)**  
**Georgia Institute of Technology (4)**  
Gonzaga University  
Hampshire College  
**Hult International Business School**  
Illinois Institute of Technology  
**Indiana University–Bloomington**  
Ithaca College  
James Madison University  
Lawrence University  
Lehigh University  
Long Island University  
Loyola Marymount University  
**Loyola University Chicago**  
Loyola University Maryland  
Loyola University New Orleans  
Marquette University  
Marymount Manhattan College  
Massachusetts College of Art and Design  
Michigan State University  
**New Jersey Institute of Technology**  
**New York University**  
**Northeastern University (4)**  
**Northwestern University (5)**  
Otis College of Art and Design  
Pace University  
Pepperdine University  
**Point Park University**  
Providence College  
**Purdue University (9)**  
Rensselaer Polytechnic Institute  
Rice University  
**Rochester Institute of Technology (2)**  
**Rollins College**  
**Santa Clara University (3)**  
**Savannah College of Art and Design (2)**  
Skidmore College  
**Southern Methodist University (3)**  
St. Edward's University  
St. Mary's University  
**Stanford University (5)**  
Stony Brook University  
**Suffolk University (4)**  
**Swarthmore College**  
**Syracuse University**  
Temple University  
Texas A & M University–College Station  
Texas Christian University  
Texas State University  
**Texas Tech University**  
The College of Wooster  
The New School  
**The Pennsylvania State University (4)**  
The University of Tampa

## COLLEGE COUNSELING PHILOSOPHY

ASFM students have an application limit of 12 colleges outside of Mexico. With 60% of our graduating class applying outside of Mexico each year, ASFM's college counseling model is centered on supporting students, in collaboration with 9–12 school counselors, to conduct thorough research and identify colleges that are a right fit for them overall – academically, culturally, financially. The class of 2025 applied to an average of 6.3 colleges outside of Mexico. **Colleges receiving an application from an ASFM applicant can be confident it is an intentional application.** ASFM does not tick rating boxes on recommendation forms.

**The University of Texas at Austin (10)**  
The University of Texas at Dallas  
**The University of Texas at San Antonio (3)**  
Tiffin University  
**Tufts University (2)**  
**Tulane University (8)**  
University of Arizona  
**University of California–Berkeley**  
University of California–Davis  
**University of California–Irvine**  
University of California–Los Angeles  
**University of California–San Diego**  
**University of California–Santa Barbara**  
University of California–Santa Cruz  
**University of Chicago (3)**  
**University of Colorado Boulder (3)**  
University of Delaware  
University of Denver  
University of Detroit Mercy  
University of Florida  
University of Hawaii at Manoa  
University of Houston  
University of Illinois Urbana–Champaign  
**University of Iowa**  
University of Kansas  
University of Maryland–College Park  
University of Massachusetts–Amherst  
University of Miami  
**University of Michigan–Ann Arbor (3)**  
University of Michigan–Dearborn  
University of Michigan–Flint  
University of Minnesota–Twin Cities  
University of Nebraska–Lincoln  
University of North Texas  
**University of Notre Dame (5)**  
University of Oregon  
**University of Pennsylvania**  
University of Pittsburgh  
**University of Richmond**  
University of Rochester  
**University of San Diego (12)**  
**University of San Francisco**  
**University of Southern California (6)**  
University of the Incarnate Word  
University of the Pacific  
University of Vermont  
**University of Virginia (2)**  
**University of Washington–Seattle**  
**University of Wisconsin–Madison (3)**  
**Villanova University**  
Virginia Commonwealth University  
**Virginia Tech University (4)**  
Washington University in St Louis  
**Wentworth Institute of Technology**  
**Worcester Polytechnic Institute**  
**Yale University (2)**

Following NACAC best practices, ASFM will, when asked and through established reporting structures, disclose to colleges disciplinary infractions resulting in out of school suspensions.