

WELCOME!



Building BOCES Capacity for the 2026-2027 School Year

12-15-2025

BOCES Services: Supporting Student Success

BOCES stands for Board of Cooperative Educational Services. BOCES are regional organizations that provide a wide range of educational services to school districts.

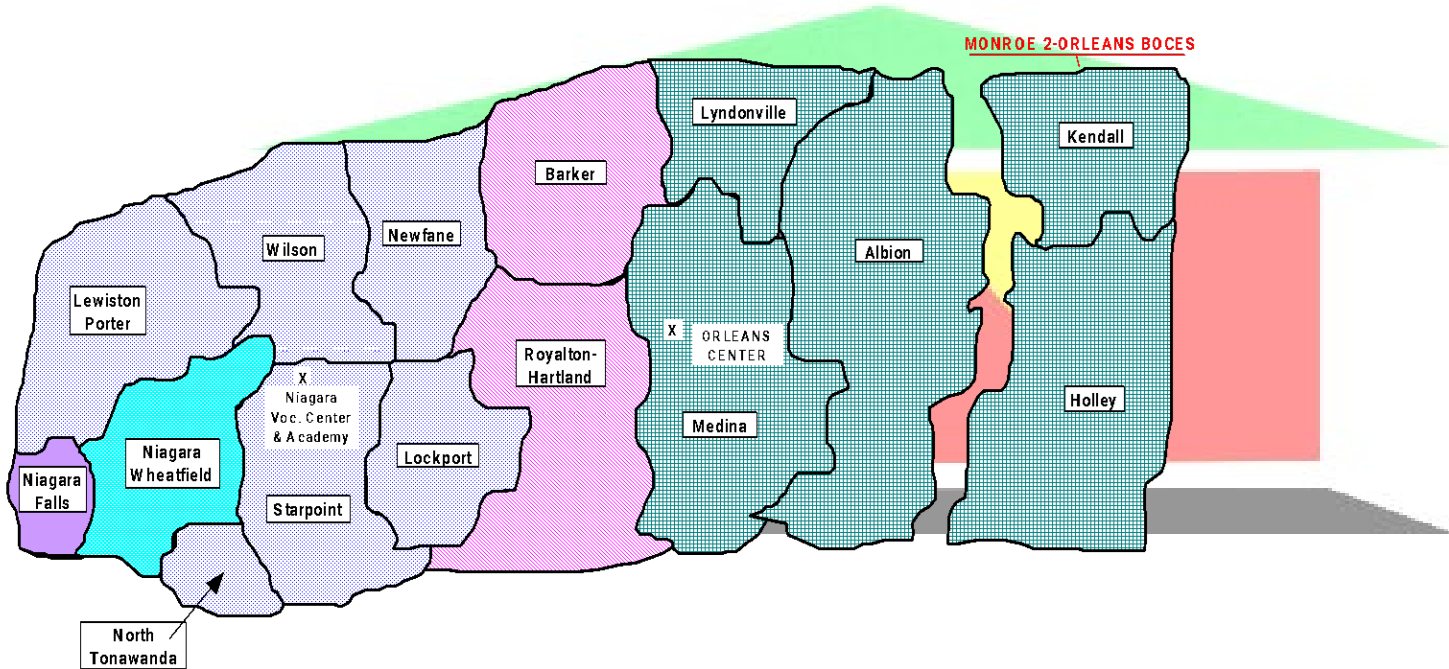
These services are designed to enhance student learning, support educators, and improve efficiency.



Orleans/Niagara BOCES Mission Statement

The mission of the Orleans/Niagara BOCES
is to be the premier provider
of innovative and effective solutions
for the evolving needs
of our component districts
and other learning collaboratives.

Orleans/Niagara BOCES District Map



THE UNIVERSITY OF THE STATE OF NEW YORK

THE STATE EDUCATION DEPARTMENT

Office of Educational Management Services

BOCES/School Districts by Supervisory District

2024-2025 Enrollments

	DISTRICT NAME	BEDS CODE	ENROLLMENT	AREA	DENSITY	LEVEL
ORLEANS-NIAGARA BOCES						
	ALBION CSD	45010106	1,649	129.32	12.75	K12
	BARKER CSD	40130104	619	73.50	8.42	K12
	LEWISTON-PORTER CSD	40030106	1,909	52.92	36.07	K12
	LOCKPORT CITY SD	40040001	4,064	31.31	129.80	K12
	LYNDONVILLE CSD	45100104	555	65.59	8.46	K12
	MEDINA CSD	45080106	1,269	81.41	15.59	K12
	NEWFANE CSD	40060106	1,223	38.12	32.08	K12
	NIAGARA FALLS CITY SD	40080001	6,112	17.19	355.56	K12
	NIAGARA-WHEATFIELD CSD	40070106	3,078	50.35	61.13	K12
	NORTH TONAWANDA CITY SD	40090001	3,126	10.37	301.45	K12
	ROYALTON-HARTLAND CSD	40120106	1,058	81.26	13.02	K12
	STARPOINT CSD	40100106	2,870	73.78	38.90	K12
	WILSON CSD	40150106	952	65.25	14.59	K12
13 DISTRICTS			28,484	770.37	36.97	

2025-2026 Board of Education

Albion

Wayne Wadhams, 2027, President

Barker

Carol Feltz, 2026

Lewiston-Porter

Danielle Mullen, 2026

Lockport

Dr. Bruce Fraser, 2027

Lydonville

Tom Klotzbach, 2026

Medina

Edward Grabowski, 2027

Newfane

Anthony Casinelli, 2026

Niagara Falls

Vincent Cancemi, 2028

Niagara Wheatfield

Robert McDermott, 2028, Vice President

North Tonawanda

Colleen Osborn, 2028

Royalton-Hartland

Keith Bond, 2027

Starpoint

Rae Amacher, 2026

Wilson

Timothy Kropp, 2028

Board of Education and NYSED

Dr. Taweepon Farrar, District Superintendent & Chief Executive Officer

Joelle Cappellino, Secretary to the District Superintendent/Board Clerk

EDUCATIONAL SERVICES	SPECIAL PROGRAMS	CAREER & TECHNICAL EDUCATION/ADULT ED	BUSINESS AND OPERATIONAL SERVICES	LABOR RELATIONS	HUMAN RESOURCES
<p>DR. RONALD BARSTYS DIRECTOR OF SPECIAL PROGRAMS AND EDUCATIONAL SERVICES</p> <p>Coaching Certification</p> <p>Drivers Education</p> <p>Home Instruction/Tutoring</p> <p>Home Schooling Monitoring</p> <p>Professional Development</p> <p>Public Relations</p> <p>Teacher Center</p> <p>Mentoring/Interim Admin</p>	<p>DR. RONALD BARSTYS DIRECTOR OF SPECIAL PROGRAMS AND EDUCATIONAL SERVICES</p> <p><u>Associate Directors</u> Lorrina Kostuk-Madonia Danielle Leonardis</p> <p><u>Principals/Assistant Principals</u> <u>Principals</u> North Tonawanda Learning Center and Niagara Wheatfield Learning Center Shannon Baccari, Principal</p> <p><u>Roy-Hart Learning Center</u> Tara Grillo, Principal</p> <p><u>Godfrey Learning Center and Orleans Learning Center</u> Rachel Ross, Principal Kristina Miles, Assistant Principal</p> <p><u>Niagara Academy</u> Roger Broecker, Principal Michelle Kulbago, Assistant Principal</p>	<p>DR. MICHAEL WEYRAUCH DIRECTOR OF CTE, AND ADULT EDUCATION</p> <p><u>Principals/Assistant Principals</u> <u>Niagara CTE Center</u> Michael Mann, Principal Robert Robinson, Assistant Principal Maureen Bartlett, Assistant Principal</p> <p><u>Orleans CTE Center</u> Nicole Goyette, Principal Elizabeth Mastromatteo, Assistant Principal</p> <p><u>Adult/Continuing Education</u> Maureen Bartlett, Coordinator</p> <p>Susan Diemert Literacy Specialist Continuing Ed.</p> <p>Diana Petrizzo Health Occ. Continuing Ed.</p>	<p>DR. MELANIE CONLEY EXECUTIVE DIRECTOR OF BUSINESS AND OPERATIONAL SERVICES</p> <p>Business Office Staff</p> <p><u>Director Facilities</u> Daniel Connolly</p> <p>Records Management Staff</p> <p>Printing Services Staff</p> <p>Safety</p> <p>Technology</p>	<p>KARL KRISTOFF, ESQ GENERAL COUNSEL/ EXECUTIVE DIRECTOR OF LABOR RELATIONS</p> <p><u>Labor Relations Specialist/School Attorney</u> Melissa Kester, Esq</p>	<p>TIMOTHY DUNHAM EXECUTIVE DIRECTOR OF HUMAN RESOURCES</p> <p>Human Resources Office Staff</p>

Dr. Michael Weyrauch
Director of Career & Technical
Education and Adult Education



Orleans Career and Technical
Center

Medina

Nicole Goyette
Elizabeth Mastromatteo

720 students (approx)

Niagara Career and Technical
Center

Sanborn

Michael Mann
Robert Robinson
Maureen Bartlett

1210 students (approx)



- Currently have 24 NYS approved programs between both our centers
- 2.5 hours a day of hands-on vocational training for Jr. and Sr. High School students, that is focused around Industry Standards
- 2025-2026 Expanded to Sophomores a Career Exploration Program



We provide and coordinate career development services, including connecting with parents, business/industry, postsecondary institutions, and community organizations to support students' transition to postsecondary education and employment.

Career & Technical Educational Programs

Advanced Machining & Engineering
Allied Health
Animal Science
Animation, Film & Visual Effects
Auto Collision & Repair
Automotive Technology
Building Maintenance &
Management
Building Trades
Certified Personal Trainer
Computer Technology
Conservation
Cosmetology
Culinary Arts

Diesel Technology/Heavy Equipment
Early Childhood Education
Electricity / Electronics
Emergency Medical Services /
Fire Science
Fashion Design/Interior Decorating
Graphic Communications
Health Occupations Technician
Heating/Ventilation/Air Conditioning
& Refrigeration (HVAC)
Security and Law Enforcement
Web Development and Game
Programming
Welding

Adult Education



Literacy Zones

Skilled Trades

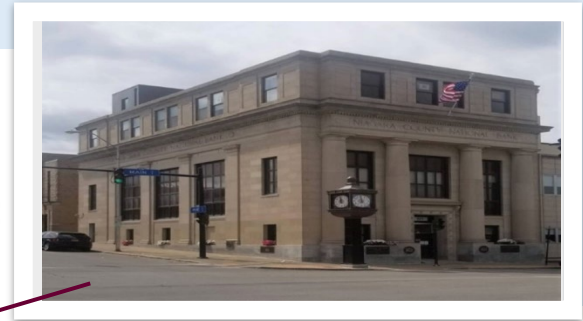


Health Occupations

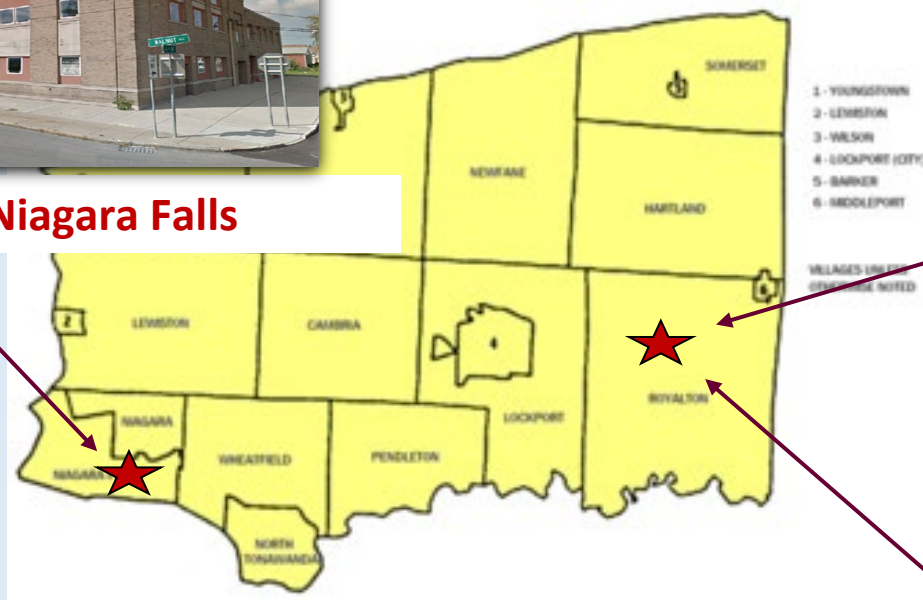
Workforce Training Centers



Walnut St, Niagara Falls



Main St, Lockport



Harrison Place, Lockport

Educational Services

- ❖ Arts in Education Program
- ❖ Center for School Improvement and Professional Development
 - *NY Inspires
- ❖ Coaching Registration
- ❖ DASA Training
- ❖ Leadership Retreat
- ❖ Early College Access
- ❖ Mentor/Interim Administrators
- ❖ Substitute Reimbursement

- ❖ Driver's Education
- ❖ Home/Hospital Teaching
- ❖ Home Schooling Oversight
- ❖ Library Media Services
- ❖ Regional Summer School
- ❖ Teacher Center
- ❖ Courier Services
- ❖ Public Relations

Other Co-Sers
Safety Risk
Labor Relations

Special and Alternative Educational Programs/Services

Dr. Ron Barstys

Director of Special Programs
& Educational Services

Lorrina Kostuk-Madonia

Associate Directors of Special Programs (Secondary)

Danielle Leonardis

Associate Directors of Special Programs (Elementary)



Special Programs:

Classroom:
Emotional Disability
Alternative Education
Multiply Disabled
Autism
Work Study/Job Coach

Related Services:
Vision
Hearing
Speech
Occupational Therapy
Physical Therapy
Orientation & Mobility
Counseling

Ancillary
Art
Music
Physical Education
Spanish
ENL
Technology
Family & Consumer Science

NIAGARA ACADEMY

Starpoint CSD



Principal

Roger Broeker

Assistant Principal

Michelle Kulbago

Middle and High

Alternative and

Special Education

GODFREY LEARNING CENTER and ORLEANS LEARNING CENTER

Newfane CSD



Secondary 6-12+
Special Education

Medina CSD



Principal
Rachel Ross
Assistant Principal
Kristina Miles

Secondary 7-12+
Special Education

ROYALTON-HARTLAND LEARNING CENTER

Royalton-Hartland CSD



Elementary Grades
K-6

Special Education

Principal
Tara Grillo

NORTH TONAWANDA LEARNING CENTER and NIAGARA WHEATFIELD LEARNING CENTER

North Tonawanda CSD



Elementary Grades
K-6

Special Education

Principal
Shannon Baccari

Niagara Wheatfield
CSD



Elementary Grades
K-6

Special Education

North Tonawanda Learning Center

Current Staff at NTLC:

74 Staff

- *Teachers: 15 including*
 - P.E. Teachers: 2
 - Art Teachers: .6
 - Music Teacher: .6
- *Support staff (aides/pca's): 43*
- *Related Service Providers:*
 - Speech: 5
 - OT: 2.4
 - PT: 1.4
 - Vision: .4
 - Counseling: 3.0
- *Other Building Staff:*
 - Secretary: 1
 - ALC aide: 1
 - BBS: 1
 - Nurse: 1

Current Student Enrollment:

- 70 Students
- 11 Current Classes

26-27 New Special Program Locations

- Ransomville Learning Center
- Tonawanda Creek Learning Center
- Expand Niagara-Wheatfield
One classroom
- Lew-Port Learning Center

New Programs:

Suspension Classroom

Alt Ed Class 5/6 Grade

Table	
1	Lew-Port Learning Center
2	Ransomville Learning Center
3	Niagara Wheatfield Learning Center
4	Tonawanda Creek Learning Center



Lew-Port Learning Center

4016 Creek Rd, Youngstown, NY 14174

Purpose	Program
Principal	TBD
Classroom (K-1)	6:01:03
Classroom (K-2)	6:01:03
Classroom (K-2)	6:01:03
OT	1
Speech	1
PT	0.4
Counselor	1
Nurse	Shared w/ Lew-Port CSD
Lead Teacher	TBD

Niagara Wheatfield Learning Center

6839 Errick Rd, North Tonawanda, NY 14120

Purpose	Program
Principal	S. Baccari
Classroom (1-2)	6:01:01
Classroom (2-3)	6:01:03
Classroom (4-5)	6:01:01
Classroom (3-4)	6:01:01
PT	0.4
OT	1
Speech	1
Counselor	1
Nurse	1
Lead Teacher	1

Tonawanda Creek Learning Center

5442 Tonawanda Creek Rd, North Tonawanda, NY 14120

Purpose	Program
Principal	S. Baccari
Classroom (K-2)	6:01:03
Classroom (1-3)	6:01:03
Classroom (3-4)	6:01:03
Classroom (2-3)	6:01:03
Classroom (5-6)	Alternative Education Program
Clerical	1
Nurse	1
PT	1
OT	1
Art	1
P.E.	1
Music	1
Speech	2
Counselor	2

Ransomville Learning Center

3745 Ransomville Rd, Ransomville, NY 14131

Purpose	Program Type
Principal	TBD
Classroom (2-3)	6:01:03
Classroom (3-4)	6:01:03
Classroom (1-3)	6:01:03
Clerical	1
Counselor	1
Nurse	1
Music	1
PE	1
Art	1
Speech	1.4
OT	1
PT	0.6
In School Suspension	1

Benefits of New Locations

- ★ Designated space for all ancillary and related service staff
- ★ Spacious faculty room
- ★ Private conference space
- ★ Large classrooms of 700 to 800+ square feet
- ★ Increased opportunities for students to integrate
- ★ Close proximity to brother/sister site
- ★ Additional opportunities to collaborate and partner with component districts
- ★ Ample parking and outdoor space for students
 - Looking into grant opportunities for a playground at Tonawanda Creek Learning Center
- ★ Spacious sensory rooms at each location
- ★ Increased access to PE via gym space

What Does This Mean?

- Change in locations/programs
- Integration vs Segregation
- Impact on budget

Questions? Comments?

