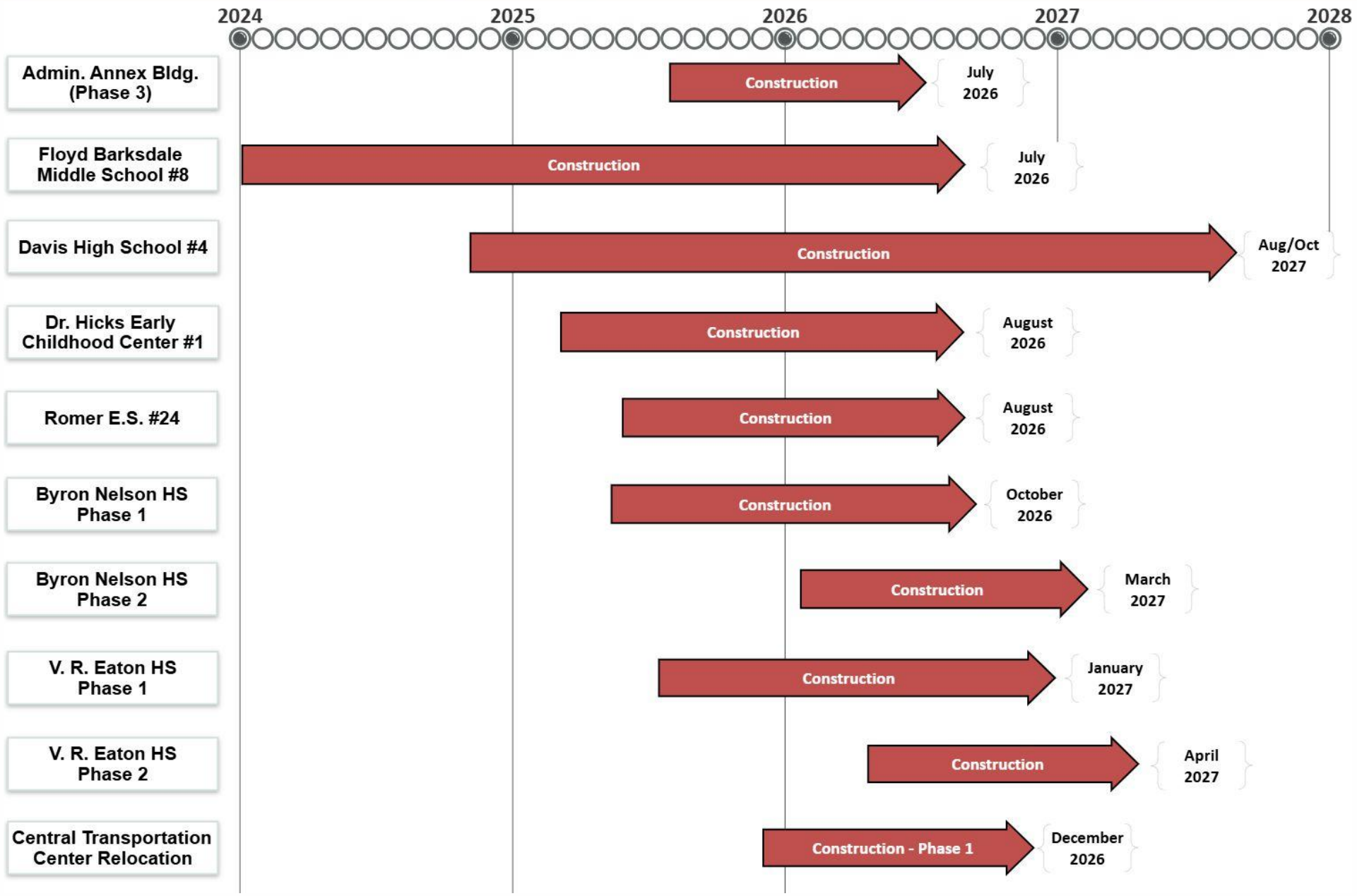


Facilities, Planning and Construction January 12, 2026



Construction Update:

- NISD Administration Annex Building – 35% Complete
- Barksdale Middle School #8 – 80% Complete
- Davis High School #4 – 28% Complete
- Dr. Hicks Early Childhood Center #1 – 40% Complete
- Romer Elementary School #24 – 55% Complete
- Byron Nelson HS – Phase 1 – Stadium & PAC Revisions – 30% Complete
- Eaton HS – Phase 1 – Stadium & PAC Revisions – 27% Complete
- Central Transportation Relocation – 5% Complete



NISD Administration Annex Building







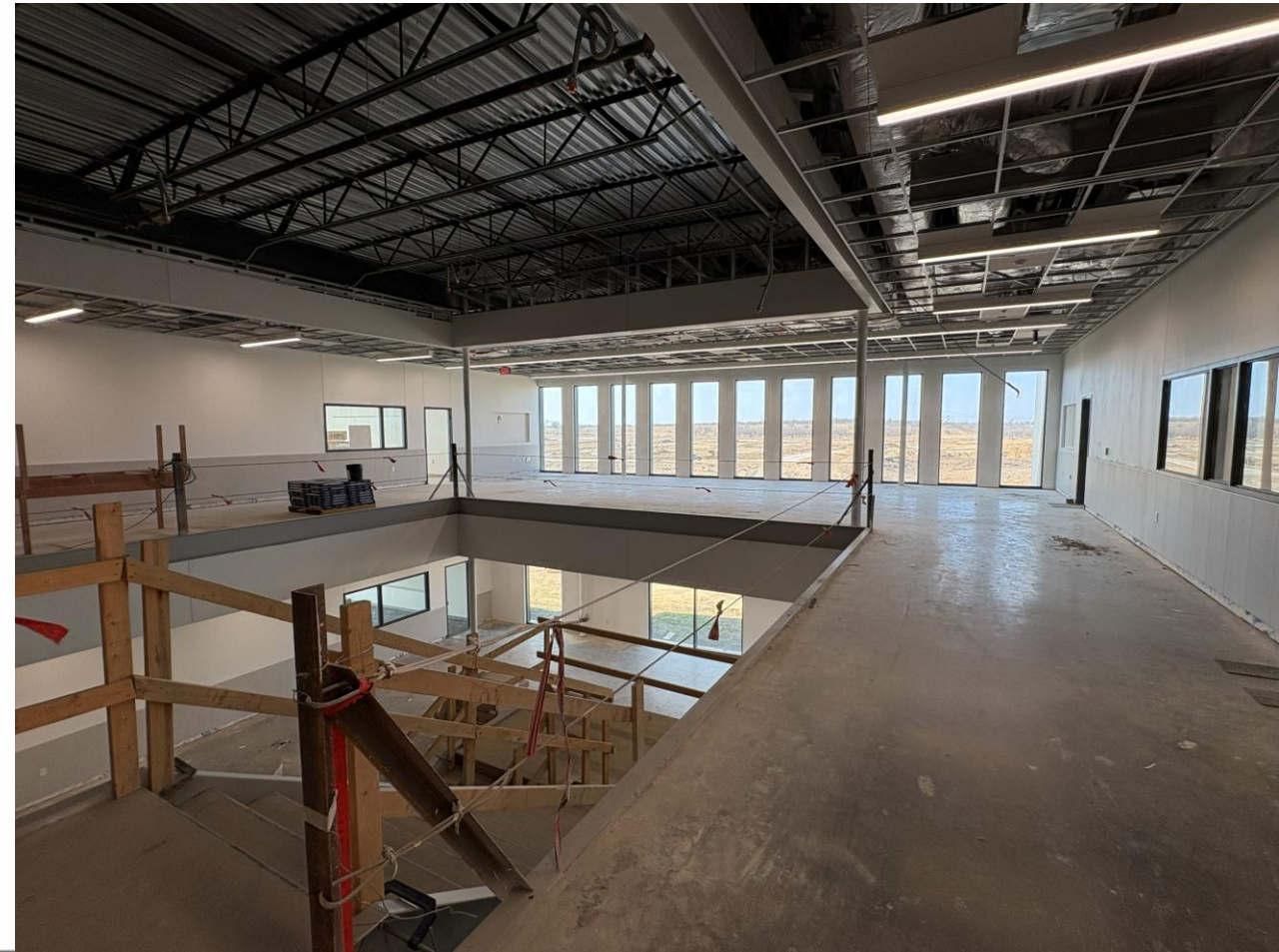


Barksdale Middle School #8















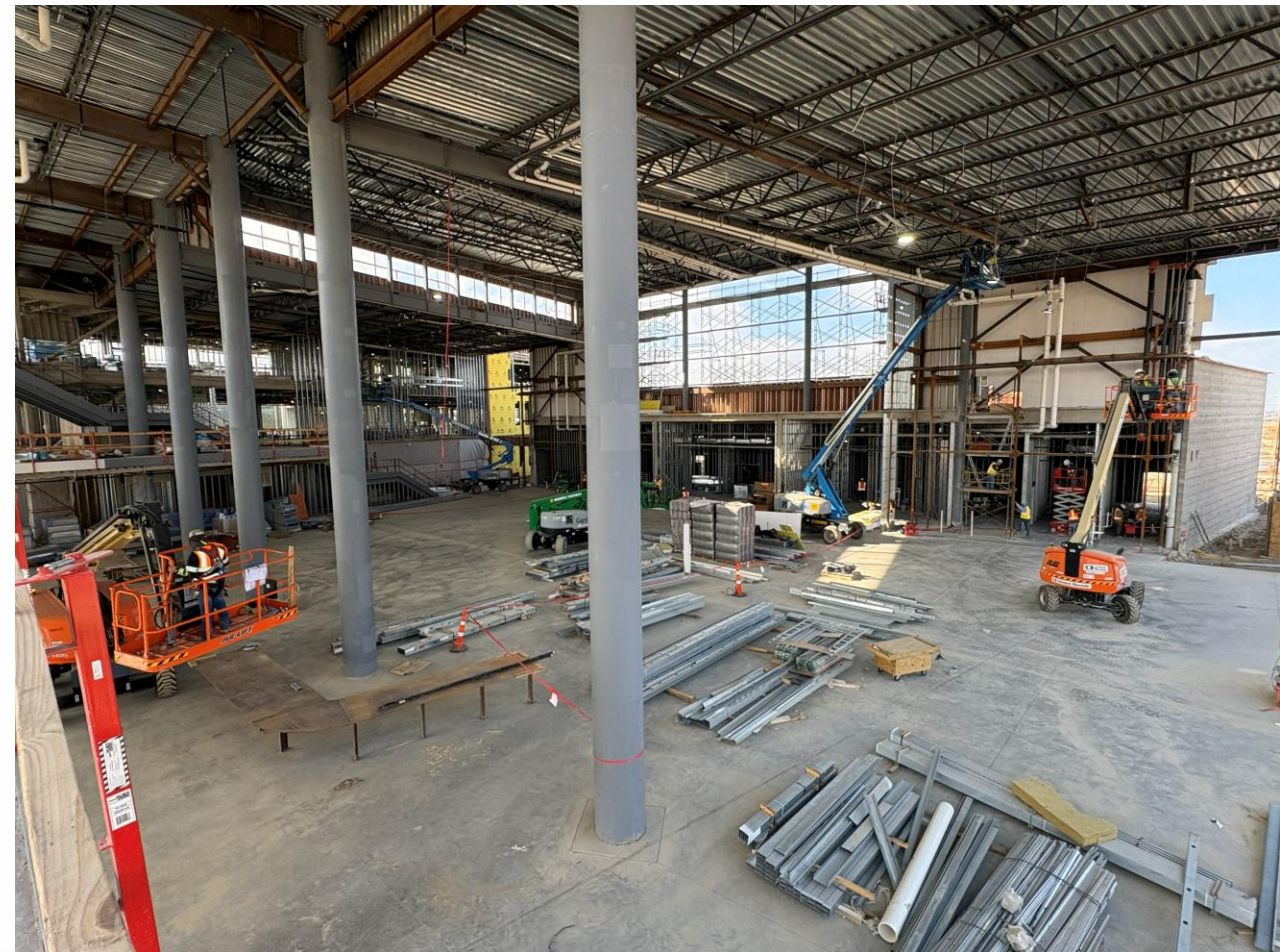
Davis High School #4













Dr. Hicks Early Childhood Center #1



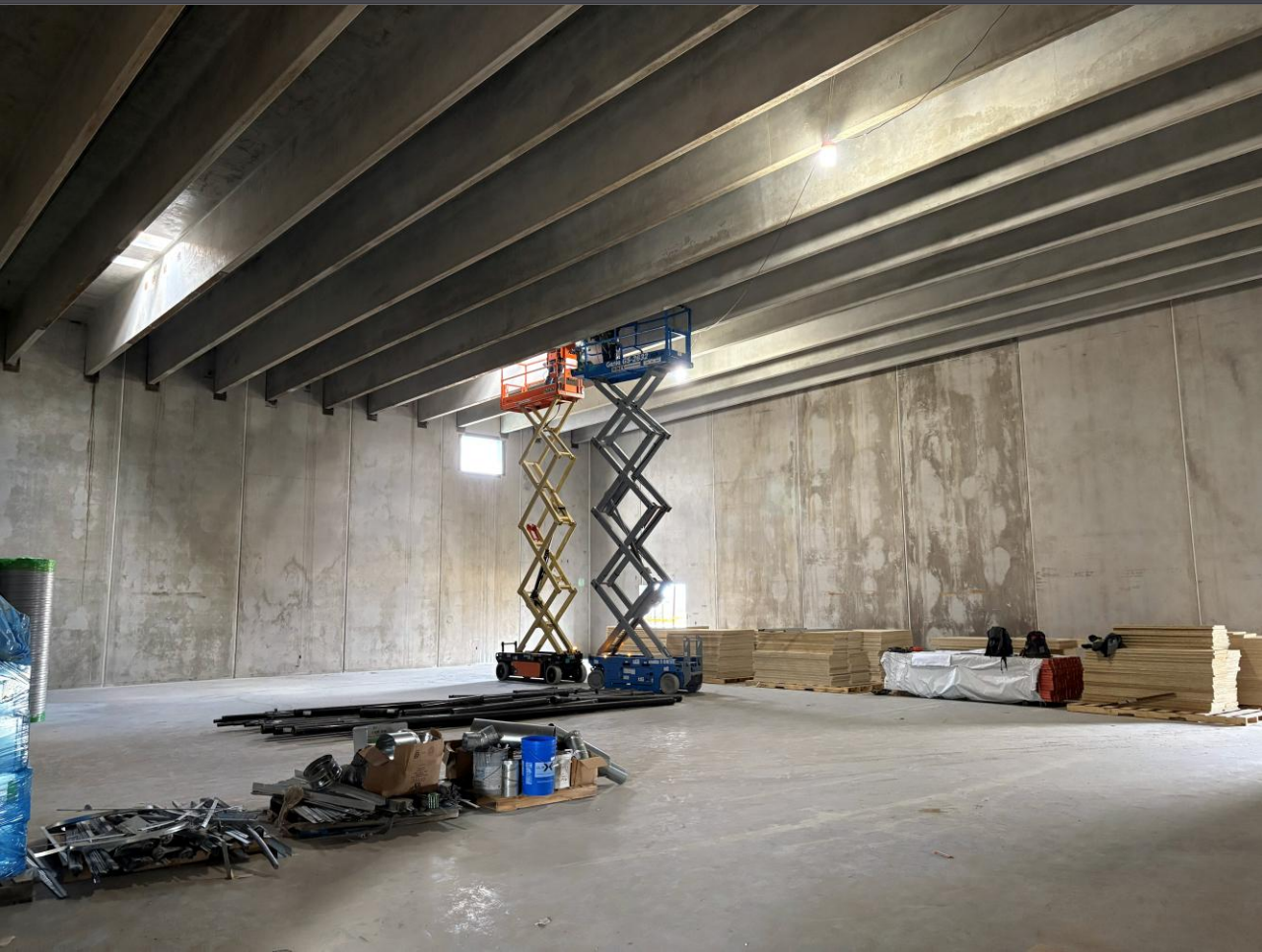




Romer Elementary School #24









Byron Nelson HS – Phase 1





V. R. Eaton HS – Phase 1







NISD Central Transportation Relocation



An aerial photograph of a large, modern school building under construction. The building has a complex, multi-winged design with a mix of grey, red, and dark blue exterior panels. The roof is mostly flat and white, with numerous HVAC units visible. The surrounding area is a mix of dirt, gravel, and some greenery, indicating an active construction site. A white text box is overlaid on the center of the image.

Questions?

www.nisdtxconstruction.org