The background is a semi-transparent map of a residential area. A large, semi-transparent circle highlights a specific region on the left side of the map. Within this circle, the text "PROPOSED NORTHWEST ISD ELEMENTARY SCHOOL OF TIBBAGO" is visible. Other street names and neighborhood names are scattered across the map, including "JUSTIN", "ROANOKE", "GLORIA LOVE", "PENNYVIEW", "BENDERA", "THOMAS", "GRANGER", "HUGHES", "LAKESIDE", "LAKESIDE VIEW", "BEG", "114", and "170".

# Attendance Boundaries

January 12, 2026

# Adjusting Attendance Boundaries

## Guiding Growth Strategies

- Prevent Campus Overcrowding
  - Unsafe environment with too many students/staff in a building
  - Creates overcrowded classrooms that could negatively impact the learning environment
- Maintain Student/Teacher Ratios
- Minimize Future Boundary Changes and its Impact on Students
- Improve Efficiency of Schools
- Consider the Opening of New Campuses

# District Attendance Boundary Team

## District Personnel

**Dr. Mark Foust**, Superintendent

**Sarah Stewart**, Interim Chief of Facilities

**Dr. Michael Griffin**, Assistant Superintendent for Curriculum & Instruction

**Kim Barker**, Assistant Superintendent for Human Resources

**Chris Hill**, Exec. Director of Secondary Education

**Kim Becan**, Exec. Director of Elementary Education

**Micah Gierkey**, Exec. Director of Student Support Services

**Lauren Hoyle**, Exec. Director of Planning

**Dr. Melissa DeSimone**, Exec. Director of Research, Assessment and Accountability

**Anthony Tosie**, Exec. Director of Communications

**Bobby Aucoin**, Exec. Director of Operations

**Julie Meek**, Director of Data Services

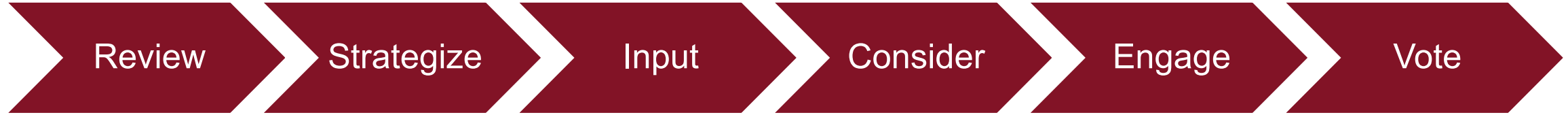
**Joel Johnson**, Exec. Director of Athletics

**Dr. Kevin Lacefield**, Exec. Director of Fine Arts

**Principals of Affected Campuses**



# Attendance Boundary Process



## **Review NISD's Statistics & Future Projections**

- District History & Growth
- Demographic Growth Projections

## **Boundary Strategies**

- Prevent Campus Overcrowding
- Minimize Future Boundary Changes and its Impact on Students
- Maintain Student/Teacher Ratios
- Improve Efficiency of Schools

## **District Input**

- District Leadership
- School Principals

## **Board of Trustees**

- Consider Recommendations

## **Engage and Communicate with the Community**

- Affected Campus Presentations
- Social Media Posts
- Newsletters
- NISD Website
- Email Correspondence

## **Board of Trustees**

- Review Community Feedback
- Vote to Establish/Adjust Boundaries



# Attendance Boundary Timeline

## December 2<sup>nd</sup> & December 15<sup>th</sup> (if needed)

- District Attendance Boundary Team Meetings

## December 8<sup>th</sup>

- Attendance Boundary Recommendation to the Board for Discussion

## December 9<sup>th</sup>- January 12<sup>th</sup>

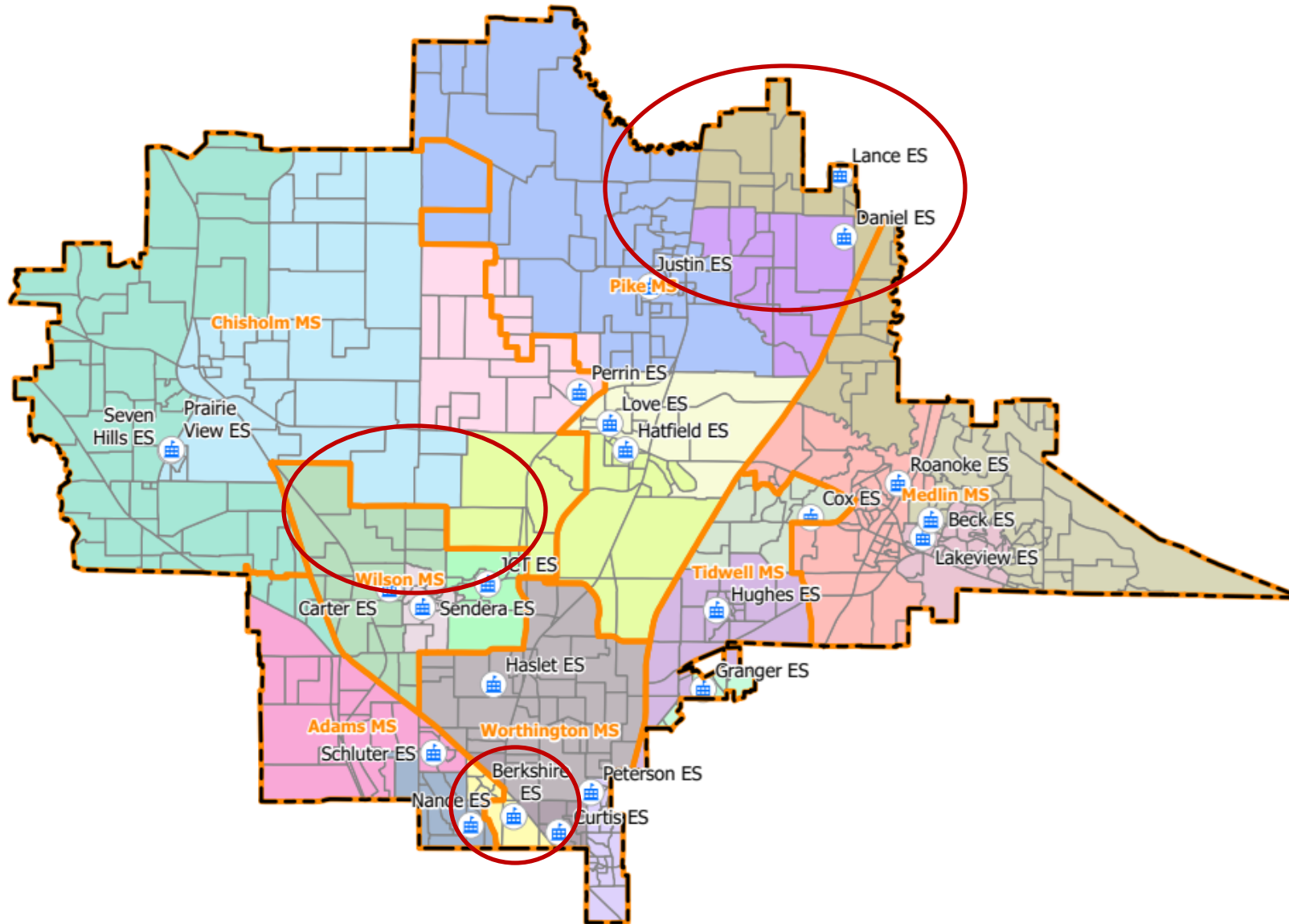
- Engage and Communicate with the Community
- Affected Campus Presentations
  - Currently being scheduled for the last two weeks before Winter Break
- Social Media Posts, Newsletters and NISD Website Information
- Feedback to be received at [onthegrow@nisdtx.org](mailto:onthegrow@nisdtx.org)

## January 12, 2026 Board of Trustees

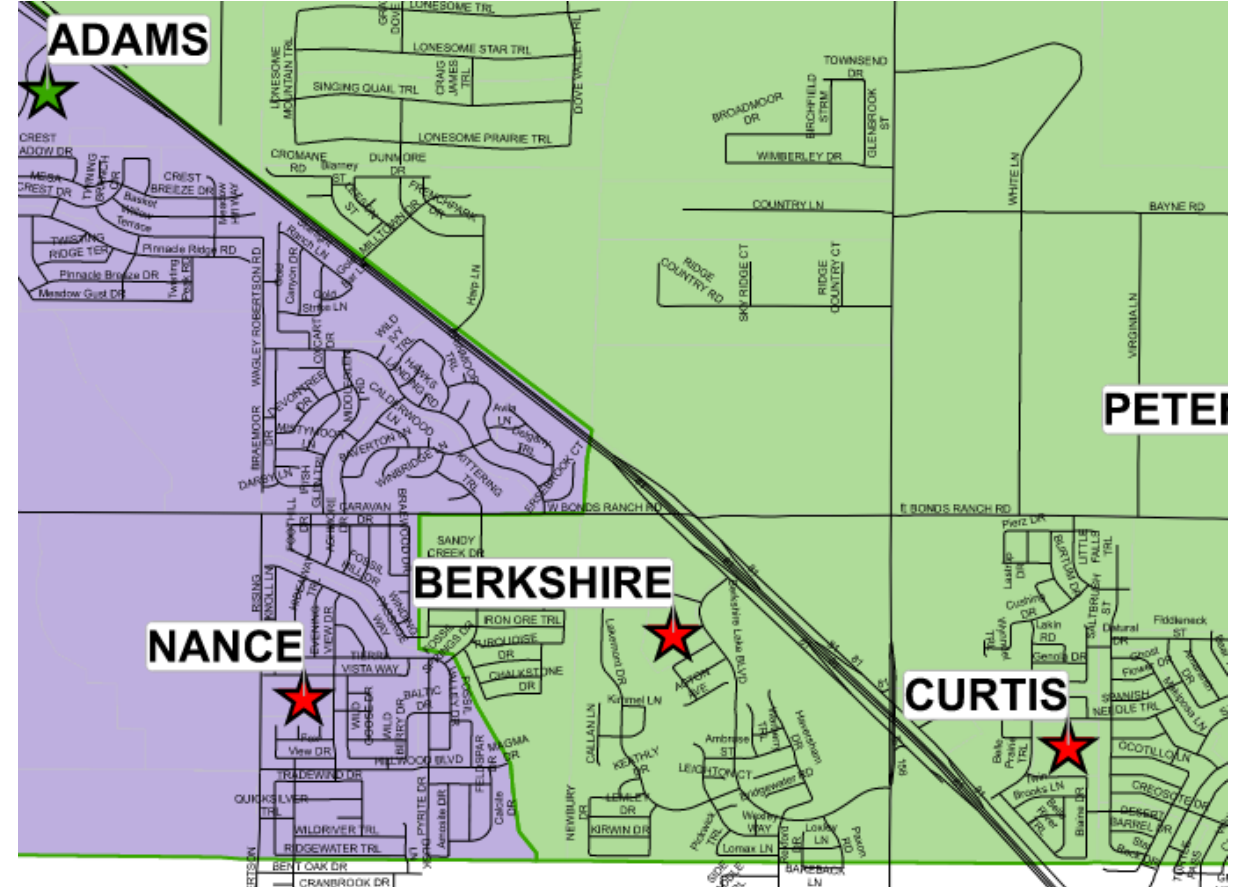
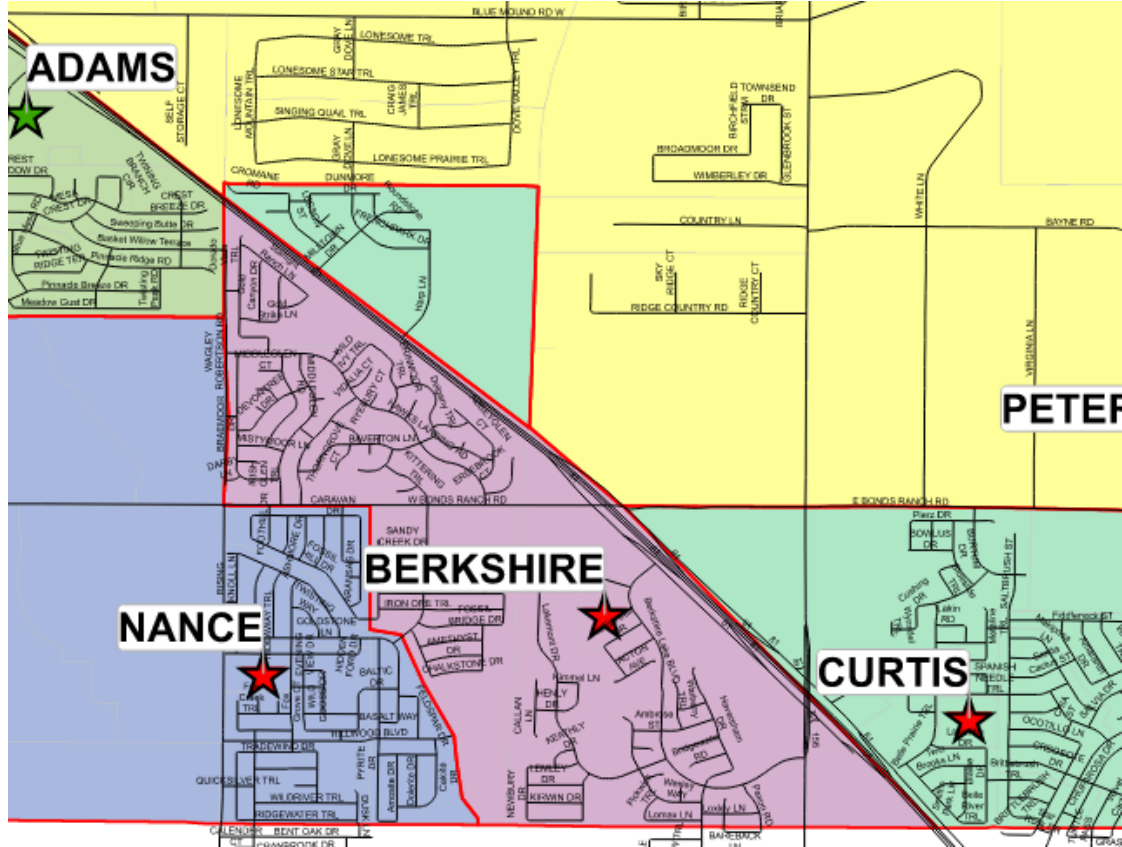
- School Board Presentation of Recommended Changes
- Board of Trustees Vote to Establish/Adjust Boundaries



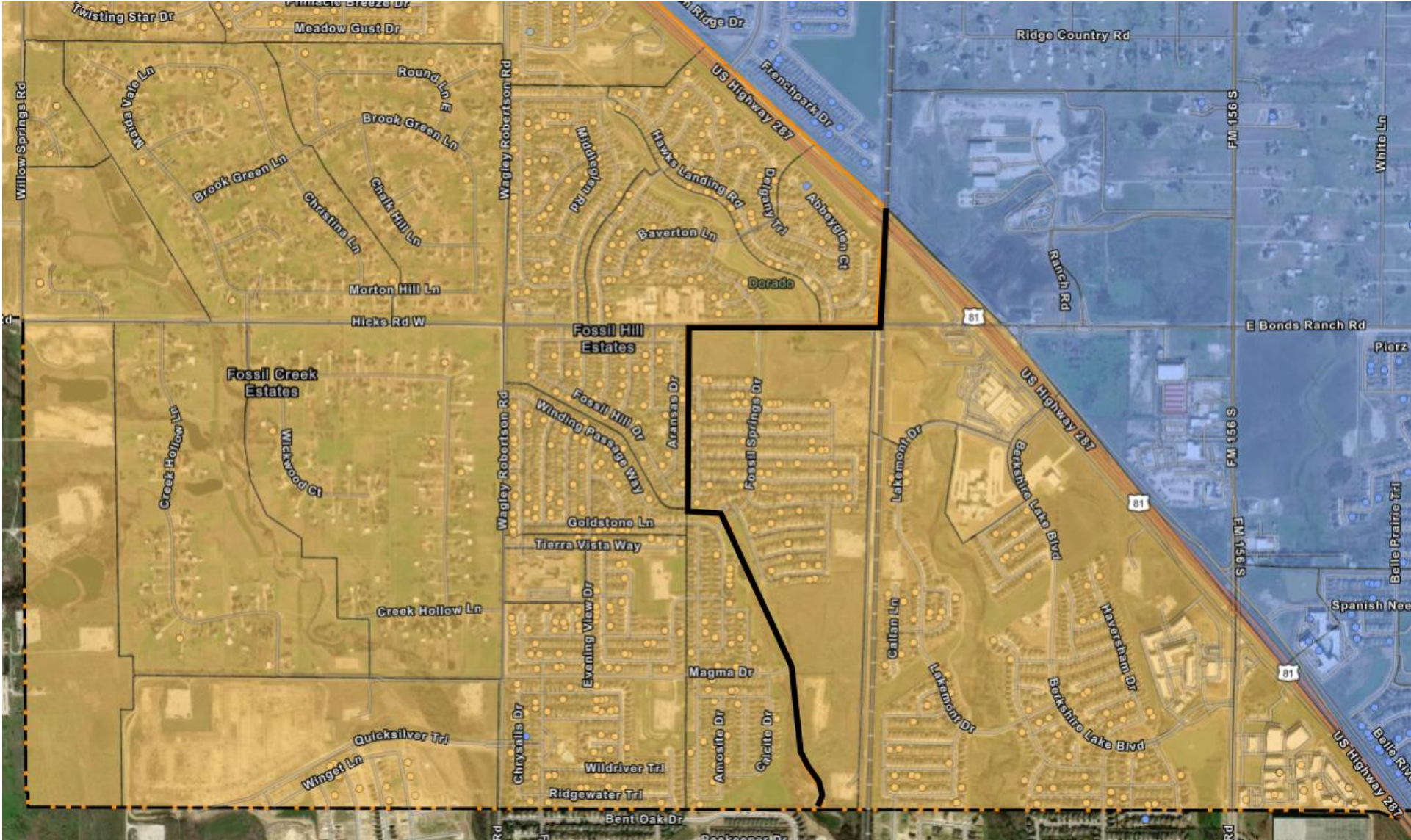
# Attendance Boundary Committee Recommendations



# Committee Recommends to Board for Adams and Worthington



# Committee Recommends to Board for Adams and Worthington



# Attendance Boundary Committee Recommendations

## Current Middle

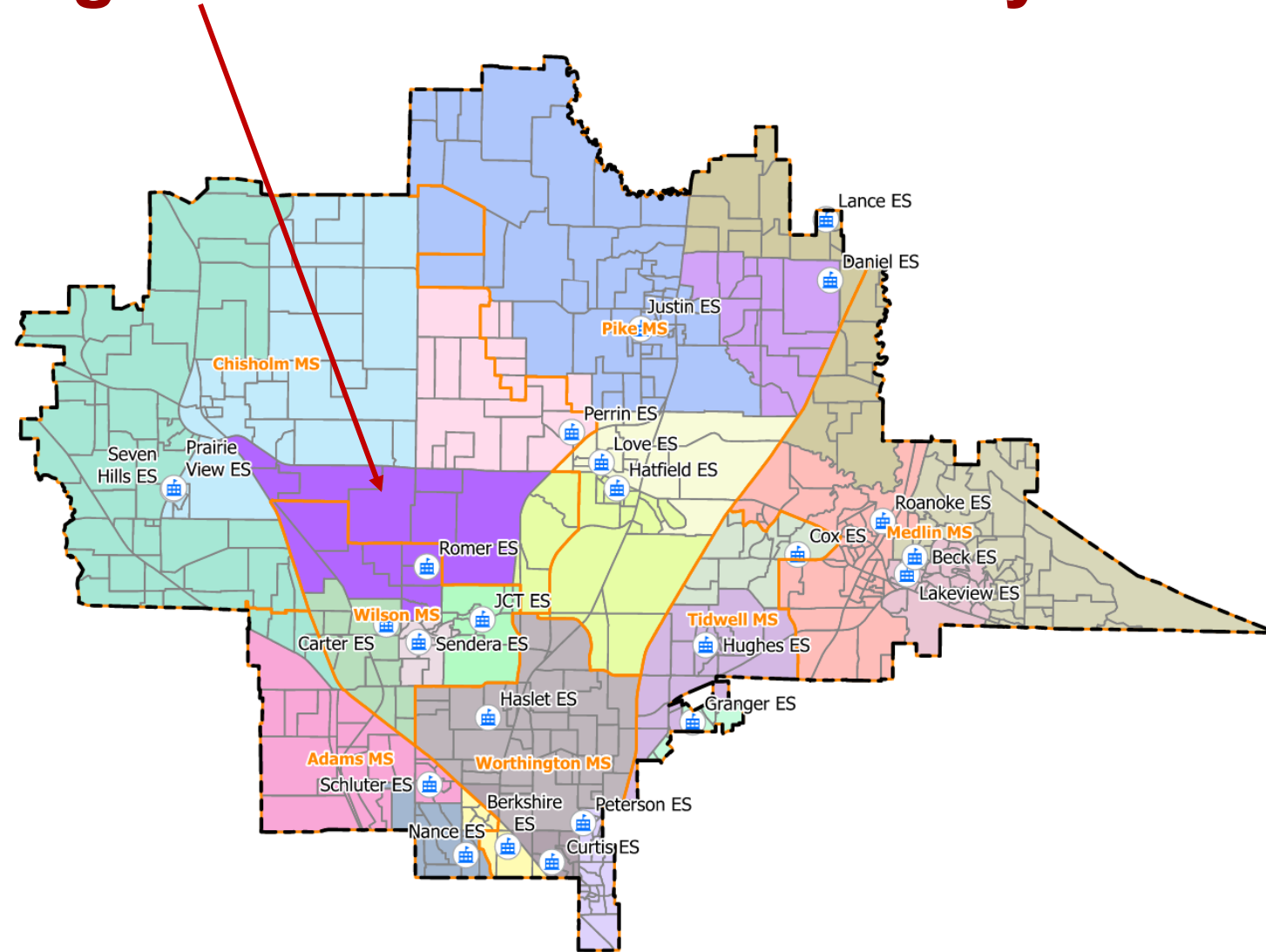
SCHOOL	CAPACITY	2025/26	2026/27	2027/28	2028/29	2029/30	2030/31	2031/32	2032/33
PIKE	1200	1,199	1,267	1,360	1,486	1,580	1,687	1,730	1,789
MEDLIN	1200	1,132	1,114	1,100	1,061	1,045	1,025	990	945
WORTHINGTON	1200	1,293	1,305	1,310	1,321	1,324	1,288	1,239	1,246
ADAMS	1200	958	952	954	960	979	1,017	1,021	1,014
Chisholm Trail	1100	963	1,024	1,134	1,214	1,289	1,353	1,431	1,506

## Recommended Middle

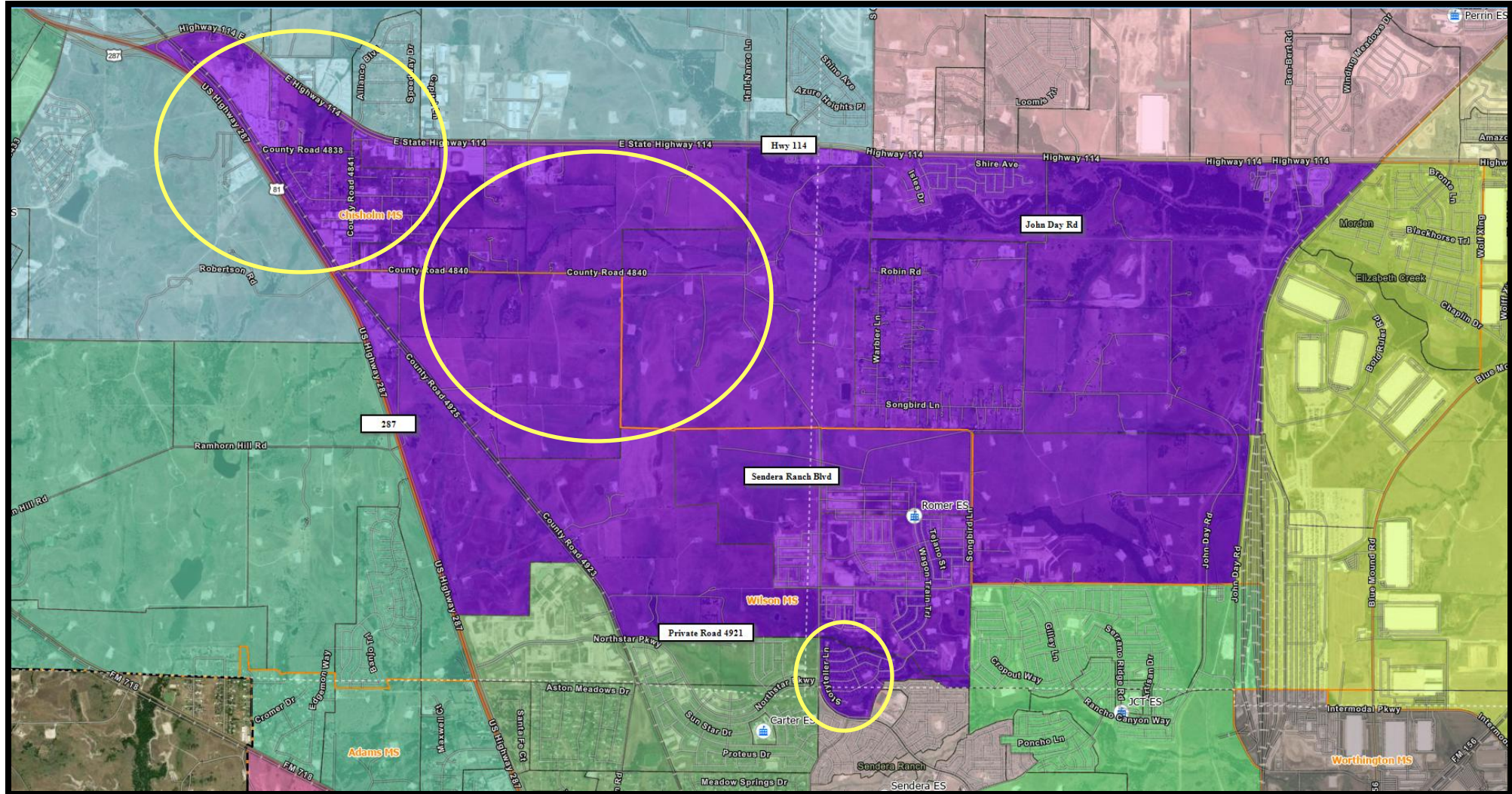
SCHOOL	CAPACITY	2025/26	2026/27	2027/28	2028/29	2029/30	2030/31	2031/32	2032/33
PIKE	1200	1,199	845	932	1,014	1,086	1,164	1,212	1,253
MEDLIN	1200	1,132	991	973	930	909	885	848	804
WORTHINGTON	1200	1,293	1,141	1,143	1,153	1,159	1,127	1,083	1,083
ADAMS	1200	958	1,116	1,121	1,128	1,144	1,178	1,177	1,173
Chisholm Trail	1100	963	796	848	899	943	984	1,042	1,106
BARKSDALE	1200	-	773	841	919	976	1,033	1,049	1,076



# Committee Recommends to Board for Dr. Leigh Anne Romer Elementary School



# Committee Recommends to Board for Dr. Leigh Anne Romer Elementary School



# Attendance Boundary Committee Recommendations

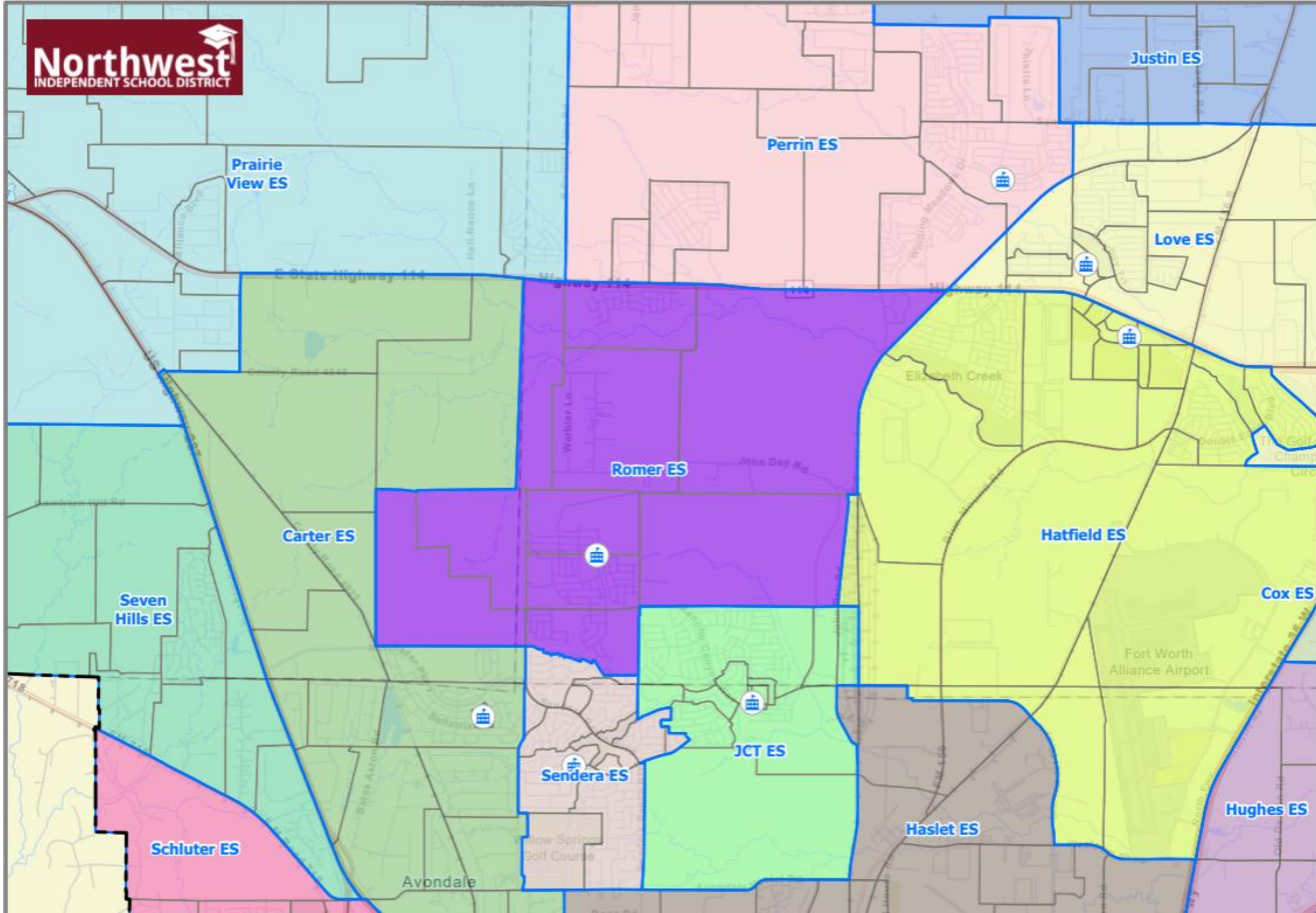
## Current Elementary

SCHOOL	CAPACITY	2025/26	2026/27	2027/28	2028/29	2029/30	2030/31	2031/32	2032/33
CARTER	850	797	874	952	1,019	1,088	1,147	1,198	1,243
SENDERA RANCH	850	796	754	708	688	665	644	625	610
HATFIELD	850	741	748	759	765	772	755	754	755
PRAIRIE VIEW	850	745	799	845	900	950	1,021	1,087	1,153

## Recommended Elementary

SCHOOL	CAPACITY	2025/26	2026/27	2027/28	2028/29	2029/30	2030/31	2031/32	2032/33
CARTER	850	797	613	578	548	523	520	524	535
SENDERA RANCH	850	796	619	606	593	593	604	626	661
HATFIELD	850	741	739	729	702	677	630	594	561
PRAIRIE VIEW	850	745	601	652	691	725	777	827	881
ROMER	850	-	518	646	789	933	1,045	1,144	1,228





Recommended

SCHOOL	CAPACITY	2025/26	2026/27	2027/28	2028/29	2029/30	2030/31	2031/32	2032/33
CARTER	850	797	613	578	548	523	520	524	535
SENDERA RANCH	850	796	619	606	593	593	604	626	661
HATFIELD	850	741	739	729	702	677	630	594	561
PRAIRIE VIEW	850	745	601	652	691	725	777	827	881
ROMER	850	-	518	646	789	933	1,045	1,144	1,228

Keeping PV : Lexington Estates

SCHOOL	CAPACITY	2025/26	2026/27	2027/28	2028/29	2029/30	2030/31	2031/32	2032/33
SENDERA RANCH	850	796	619	606	593	593	604	626	661
52 PRAIRIE VIEW	850	745	633	678	716	748	799	848	900
ROMER	850	-	466	646	789	933	1,045	1,144	1,228

Keeping SR

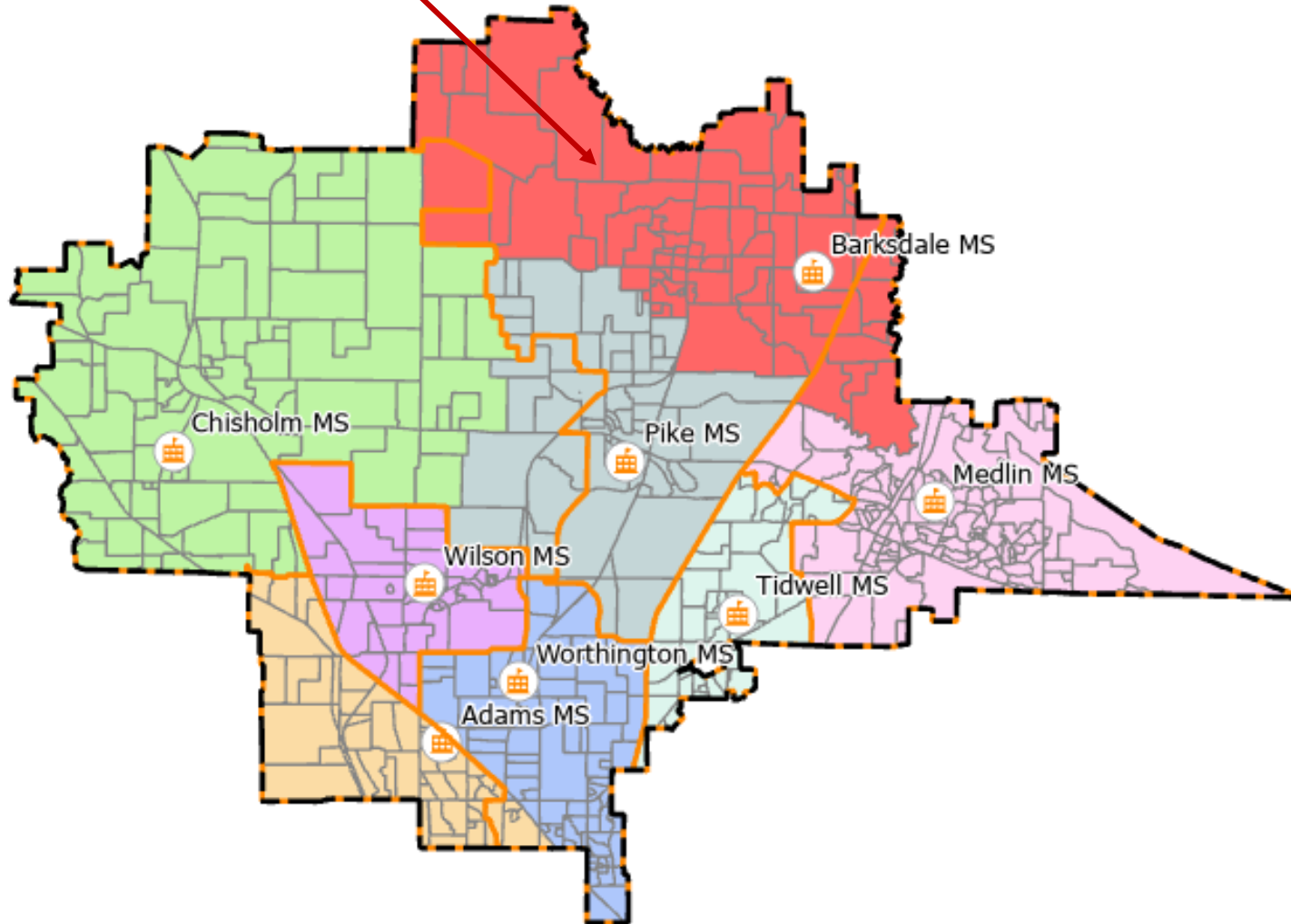
SCHOOL	CAPACITY	2025/26	2026/27	2027/28	2028/29	2029/30	2030/31	2031/32	2032/33
SENDERA RANCH	850	796	669	655	640	640	653	676	715
69 PRAIRIE VIEW	850	745	601	652	691	725	777	827	881
ROMER	850	-	449	646	789	933	1,045	1,144	1,228

Leave both

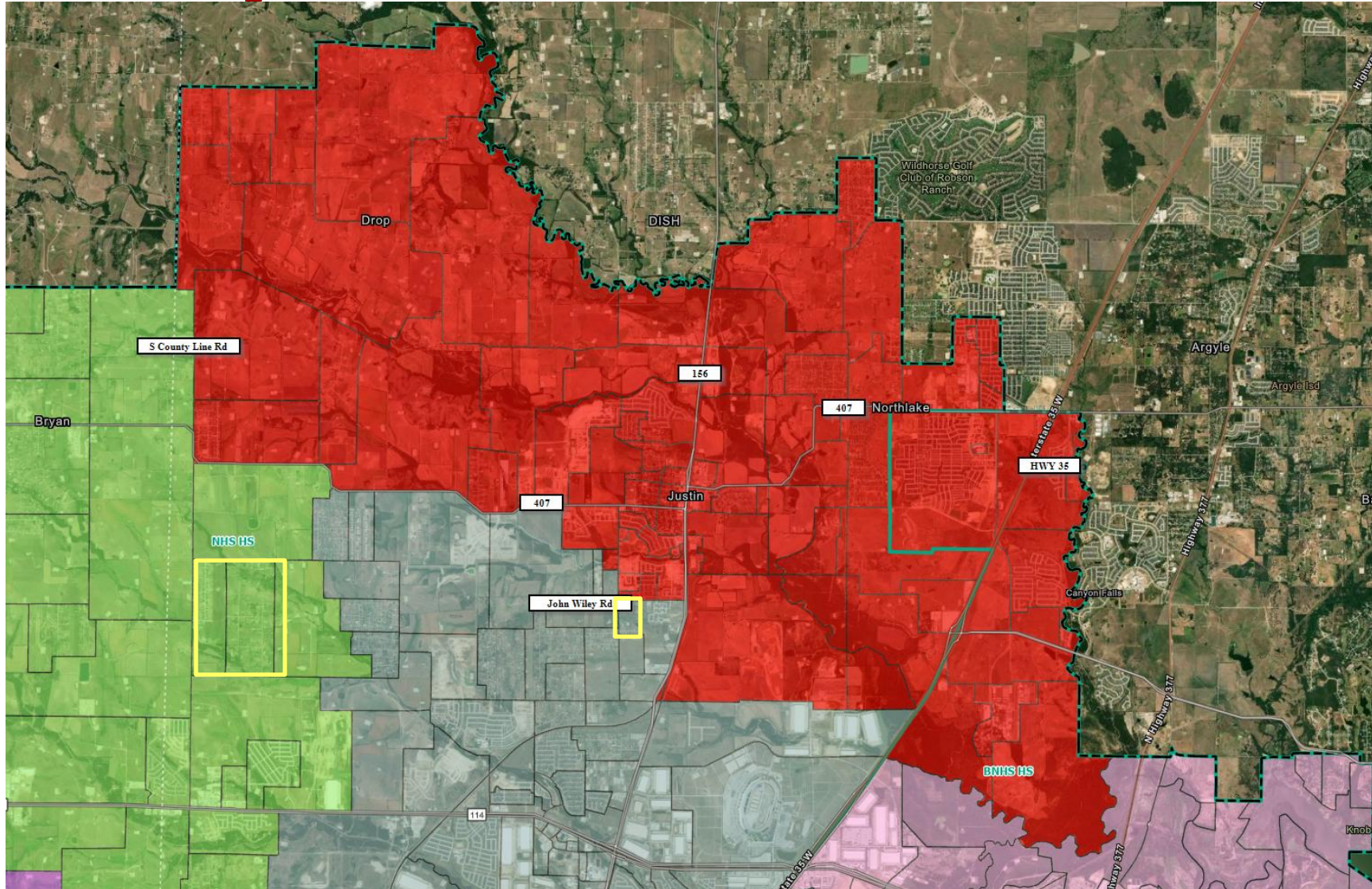
SCHOOL	CAPACITY	2025/26	2026/27	2027/28	2028/29	2029/30	2030/31	2031/32	2032/33
SENDERA RANCH	850	796	669	655	640	640	653	676	715
PRAIRIE VIEW	850	745	633	678	716	748	799	848	900
ROMER	850	-	409	525	646	762	848	921	981



# Committee Recommends to Board for Floyd Barksdale Middle School



# Committee Recommends to Board for Floyd Barksdale Middle School



# Attendance Boundary Committee Recommendations

## Current Middle

SCHOOL	CAPACITY	2025/26	2026/27	2027/28	2028/29	2029/30	2030/31	2031/32	2032/33
PIKE	1200	1,199	1,267	1,360	1,486	1,580	1,687	1,730	1,789
MEDLIN	1200	1,132	1,114	1,100	1,061	1,045	1,025	990	945
WORTHINGTON	1200	1,293	1,305	1,310	1,321	1,324	1,288	1,239	1,246
ADAMS	1200	958	952	954	960	979	1,017	1,021	1,014
Chisholm Trail	1100	963	1,024	1,134	1,214	1,289	1,353	1,431	1,506

## Recommended Middle

SCHOOL	CAPACITY	2025/26	2026/27	2027/28	2028/29	2029/30	2030/31	2031/32	2032/33
PIKE	1200	1,199	845	932	1,014	1,086	1,164	1,212	1,253
MEDLIN	1200	1,132	991	973	930	909	885	848	804
WORTHINGTON	1200	1,293	1,141	1,143	1,153	1,159	1,127	1,083	1,083
ADAMS	1200	958	1,116	1,121	1,128	1,144	1,178	1,177	1,173
Chisholm Trail	1100	963	796	848	899	943	984	1,042	1,106
BARKSDALE	1200	-	773	841	919	976	1,033	1,049	1,076



# Attendance Boundary Recommendations

1. Students starting 5<sup>th</sup> grade next year would be eligible to remain at their existing elementary.
2. Students starting 7<sup>th</sup> & 8<sup>th</sup> grade next year would be eligible to remain at their existing middle school.
3. Students choosing to remain would not receive bus transportation, and younger siblings would not be eligible.



# Questions