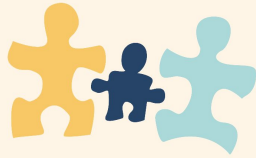


2025/26

THE PUZZLE OF PARENTING



Free workshops designed to support parents, grandparents and caregivers of children from birth to kindergarten age.



Positive Solutions

This is an evidence-based series of six sessions developed by the Center on the Social and Emotional Foundations for Early Learning (CSEFEL). It is designed to help parents and caregivers promote their young child's social and emotional development and to better understand young children's challenging behaviors. Parents and caregivers will learn how to use positive approaches to improve their interactions with their child; help children learn appropriate behavior; and to build their child's confidence and self-esteem. Thereby, preparing children for successful early learning experiences.

WHEN: 2/24/26, 3/3/26, 3/10/26, 3/17/26, 3/24/26,
3/31/26; 6:30-7:30pm

WHERE: VIRTUAL

Pre-registration is
required and
helps us to plan.

Thank you!

PLEASE REGISTER AS IT HELPS US PLAN. SIGN UP WITH YOUR CFCE SPECIALIST OR:

CALL: 413-588-5568 | E-MAIL: earlychildhood@collaborative.org | ONLINE: <http://bit.ly/pop2026>



CES · CFCE
COORDINATED FAMILY AND COMMUNITY ENGAGEMENT

Funded by a Coordinated Family and Community Engagement grant from the MA Department of Early Education and Care, administered by Collaborative for Educational Services

