



FutureThink
PLAN TO EMPOWER

FINAL REPORT



Strongsville City School District
Enrollment Projection Study
December 16, 2025

INTRODUCTION

FutureThink was contracted to develop enrollment projections for the Strongsville City School District.

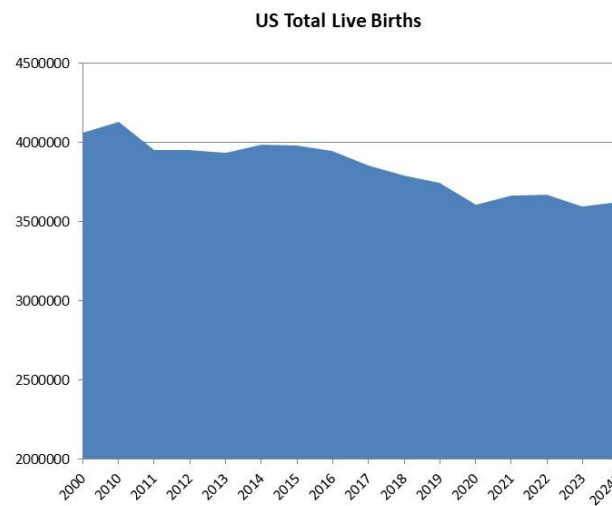
This report contains ten-year enrollment projections, which were developed for the Strongsville City School District by analyzing the following data:

- ▶ Live birth data
- ▶ Historical enrollment
- ▶ Community school enrollment
- ▶ Open enrollment
- ▶ Community demographics
- ▶ Housing information

The projections presented in this report are meant to serve as a planning tool for the future and represent the most likely direction of the District.

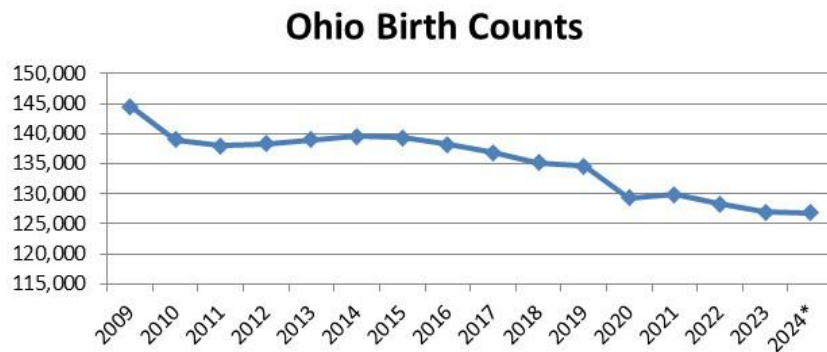
NATIONAL & OHIO TRENDS IN ENROLLMENT

The United States as a whole continues to undergo major shifts in public student enrollment. Births are a significant part of this shift. From 2000 to 2010, births increased, then declined from 2011 to 2013. In 2014, there was a slight uptick. Since 2014, there has been steady decline. The decrease from 2019 to 2020 was approximately 4 percent. However, in 2021, there was a slight uptick of 1.5 percent. Since, birth counts reached an all-time low in 2023 and had another slight uptick in 2024 of less than 1 percent.



Source: CDC, NVSS, Vital Statistics Rapid Release, Report No. 38, April 2025
*provisional

From 2009 to 2011, Ohio births declined by 12,760 and then somewhat leveled off through 2014. Since 2014, births have dropped each year with a slight uptick from 2020 to 2021. From 2019 to 2024, births declined by approximately 6 percent.

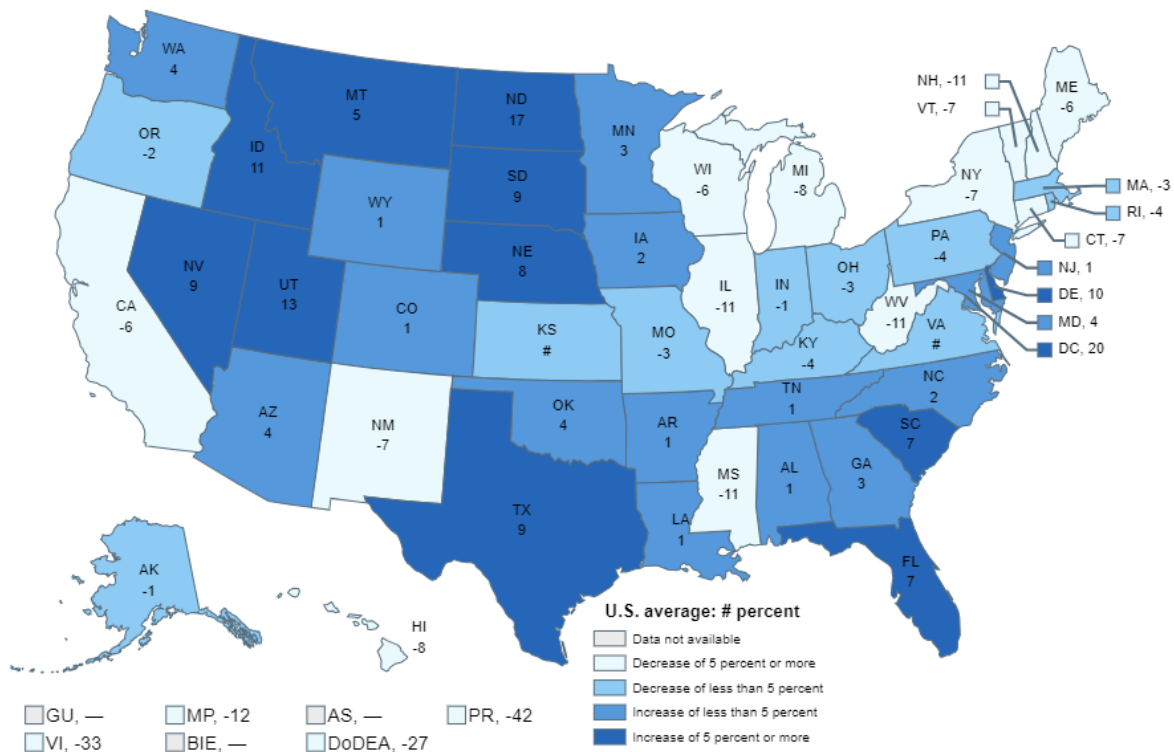


Strongsville City School District

In addition to births dropping in Ohio, the state is also aging. The median age in 2023 was 39.9 years of age while the national median age was 38.9 years. In 2010, the median age in Ohio was 38.3 years.

The figure below illustrates the change in Pre-K - 12 public school enrollment from the 2012-13 to the 2022-23 school year. States with growth in enrollment were primarily in the southeast and west. Ohio experienced a decrease of 3 percent.

Figure 2. Percentage change in public elementary and secondary school enrollment, by state or jurisdiction: Fall 2012 to fall 2022



— Not available.

Rounds to zero.

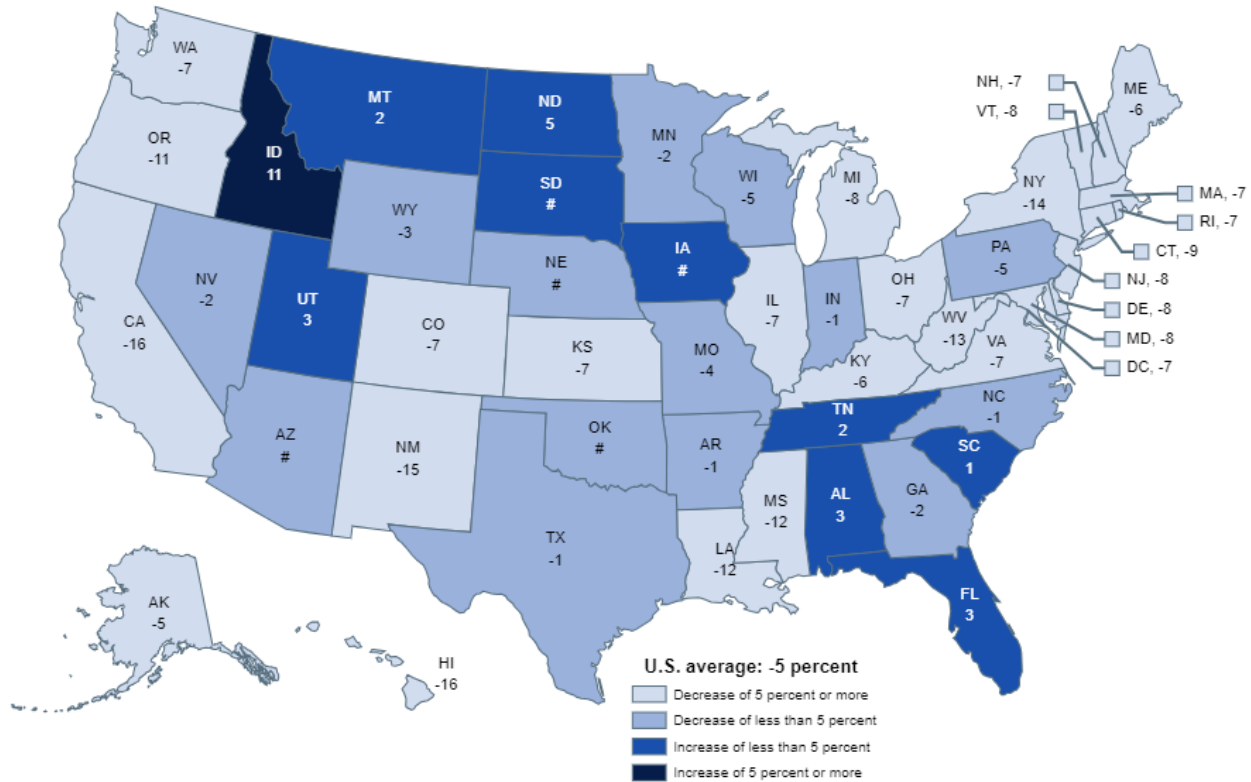
NOTE: U.S. average is for the 50 states and the District of Columbia. Data include both traditional public schools and public charter schools. Includes imputations for nonreported prekindergarten enrollment in California and Oregon for fall 2022. Figures are plotted based on unrounded data.

SOURCE: U.S. Department of Education, National Center for Education Statistics, Common Core of Data (CCD), "State Nonfiscal Survey of Public Elementary/Secondary Education," 2012–13 and 2022–23. Department of Defense Education Activity (DoDEA) Data Center, Enrollment Data, 2012 and 2022, retrieved December 12, 2022, from <https://www.dodea.edu/datacenter/enrollment.cfm>. See *Digest of Education Statistics 2023*, table 203.20.

Strongsville City School District

The figure below illustrates the projected change in Pre-K-12 public school enrollment from the 2022-23 to the 2031-32 school year. Growth is expected in only 10 states over this time period. Ohio is projected to experience a decrease of 7 percent.

Figure 3. Projected percentage change in public elementary and secondary school enrollment, by state: Fall 2022 to fall 2031



Rounds to zero.

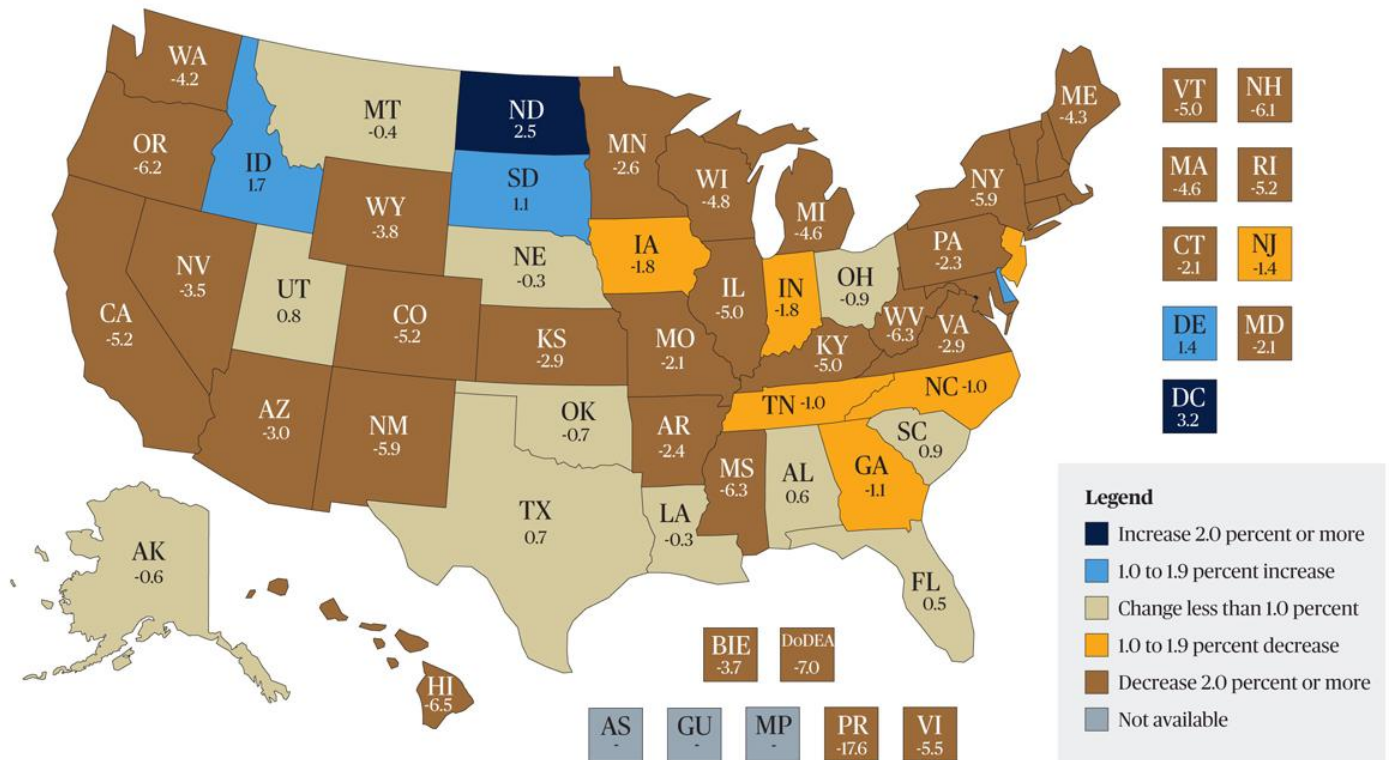
NOTE: U.S. average is for the 50 states and the District of Columbia. Projected enrollment data are not available for the other U.S. jurisdictions. Data include both traditional public schools and public charter schools. Includes imputations for nonreported prekindergarten enrollment in California and Oregon for fall 2022. Projections in this figure were calculated after the onset of the coronavirus pandemic and take into account the expected impacts of the pandemic. Projections for fall 2023 through fall 2031 are based on historical data through fall 2021, only. Figures are plotted based on unrounded data.

SOURCE: U.S. Department of Education, National Center for Education Statistics, Common Core of Data (CCD), "State Nonfiscal Survey of Public Elementary/Secondary Education," 2022-23; and State Public Elementary and Secondary Enrollment Projection Model, through 2031. See *Digest of Education Statistics 2023*, table 203.20.

Strongsville City School District

The figure below illustrates the change in Pre-K-12 public school enrollment from the 2019-20 to the 2023-24 school year. Only 4 states and the District of Columbia saw an increase of 1% or more during this time. Ohio experienced a decrease in enrollment of less than 1 percent.

Figure 1: Percent Change in Public School Enrollment Between Fall 2019 and Fall 2023



- Not available

NOTE: Includes imputations for nonreported prekindergarten enrollment in California in 2019 and California and Oregon in 2023.

SOURCE: U.S. Department of Education, National Center for Education Statistics, Common Core of Data (CCD), "State Nonfiscal Survey of Public Elementary/Secondary Education," 1990-91 through 2023-24. Department of Defense Education Activity (DoDEA) Data Center, Enrollment Data, Fall 2011 through Fall 2023, retrieved November 16, 2023 from <https://www.dodea.edu/education/research-accountability-and-evaluation/enrollment-management>. See Digest of Education Statistics 2024, table 203.20, https://nces.ed.gov/programs/digest/d24/tables/dt24_203.20.asp.

Strongsville City School District

From 2015-16 to 2024-25, public school enrollment declined by 115,310 students or approximately 6% statewide. In 2021-22, there was a slight uptick of 5,810 or less than 0.5 percent.

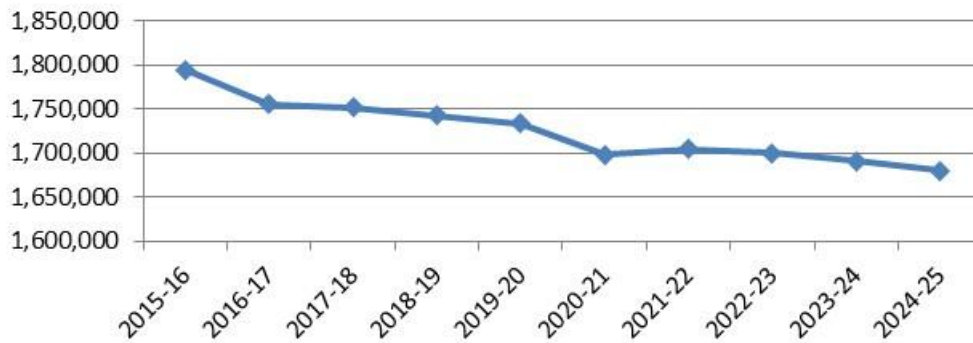
Ohio Public School Enrollment 2015-16 - 2024-25

| Year | October Headcount* |
|---------|--------------------|
| 2015-16 | 1,795,339 |
| 2016-17 | 1,755,552 |
| 2017-18 | 1,751,888 |
| 2018-19 | 1,742,715 |
| 2019-20 | 1,733,911 |
| 2020-21 | 1,698,925 |
| 2021-22 | 1,704,735 |
| 2022-23 | 1,699,957 |
| 2023-24 | 1,691,726 |
| 2024-25 | 1,680,029 |

Source: Ohio Department of Education & Workforce

*includes grades K-12 and ungraded

Ohio Public School Enrollment



Strongsville City School District

From 2015-16 to 2024-25, non-public school enrollment increased by 6,703 students or approximately 4 percent. From 2020-21 to 2024-25, non-public school enrollment has increased by over 18,000 students or approximately 11 percent.

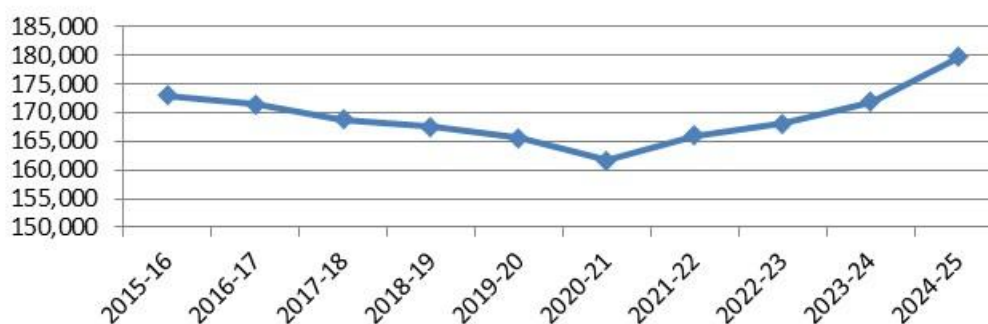
Ohio Chartered Non-Public School Enrollment 2015-16 - 2024-25

| Year | October ADM* |
|---------|--------------|
| 2015-16 | 172,990 |
| 2016-17 | 171,426 |
| 2017-18 | 168,857 |
| 2018-19 | 167,558 |
| 2019-20 | 165,511 |
| 2020-21 | 161,664 |
| 2021-22 | 166,013 |
| 2022-23 | 168,111 |
| 2023-24 | 171,830 |
| 2024-25 | 179,693 |

Source: Ohio Department of Education & Workforce

*includes grades K-12

Ohio Non-Public School Enrollment



Strongsville City School District

Out of 607 school districts, only 92 (or approximately 15%) gained enrollment in grades K - 12 from the 2014-15 to the 2024-25 school year. Please note 5 districts had either 0 students in 2014-15 or in 2024-25 and were not included in the count.

Of the 515 school districts who lost enrollment, 58 (or approximately 13%) lost less than 5 percent, and 118 districts (or approximately 23%) lost between 5 and 10 percent. Approximately 33% (or 172 districts) lost between 11 and 20 percent, and approximately 32% (or 167 districts) lost more than 20 percent.

Of those districts that gained enrollment, 39 (or approximately 42%) increased by less than 5 percent, and 22 (or approximately 24%) increased between 5 and 10 percent. Twenty-three districts (or approximately 25%) increased between 10 and 20%, and 8 districts (or approximately 9%) increased over 20 percent.

Analyzing enrollment from a county perspective, only 10 of the 88 counties in Ohio gained K – 12 enrollment from the 2014-15 to the 2024-25 school year. Delaware County gained approximately 17%, while the rest gained approximately 5% or less.

| County | 2024-25 K-12 Total | 2015-16 K-12 Total | Difference | % Change |
|-----------|--------------------|--------------------|------------|----------|
| Delaware | 35,030 | 30,023 | 5,007 | 16.7% |
| Seneca | 6,493 | 6,170 | 323 | 5.2% |
| Licking | 27,264 | 25,977 | 1,287 | 5.0% |
| Fairfield | 25,361 | 24,251 | 1,110 | 4.6% |
| Union | 7,881 | 7,679 | 202 | 2.6% |
| Mercer | 7,951 | 7,754 | 197 | 2.5% |
| Warren | 36,645 | 35,942 | 703 | 2.0% |
| Pickaway | 9,234 | 9,104 | 130 | 1.4% |
| Franklin | 169,025 | 167,801 | 1,224 | 0.7% |
| Madison | 6,450 | 6,438 | 12 | 0.2% |

Clinton County had the highest percentage loss of students at 25 percent. Fifty-six percent of the counties (49 total) experienced a decline of greater than 10 percent. The map on the following page illustrates the gain/loss for each county from the 2014-15 to the 2024-25 school year.

Strongsville City School District

ENROLLMENT PROJECTION METHODOLOGIES

When projecting future enrollments, it is vital to track the number of births, the patterns of enrollment, the amount of new housing activity, and the change in household composition.

In addition, any of the following factors could cause a significant change in projected student enrollments:

- ▶ Boundary adjustments
- ▶ New school openings
- ▶ Changes/additions in program offerings
- ▶ Preschool programs
- ▶ Change in grade configuration
- ▶ Interest rates/unemployment shifts
- ▶ Magnet/charter/private school opening or closure
- ▶ Zoning changes
- ▶ Unplanned new housing activity
- ▶ Planned, but not built, housing

Obviously, certain factors can be gauged and planned for far better than others. For instance, it may be relatively straightforward to gather housing data from local builders regarding the total number of lots in a planned subdivision and calculate the potential student yield. However, planning for changes in the unemployment rate, and how these may either boost or reduce public school enrollment, proves more difficult. In any case, it is essential to gather a wide variety of information in preparation for producing enrollment projections.

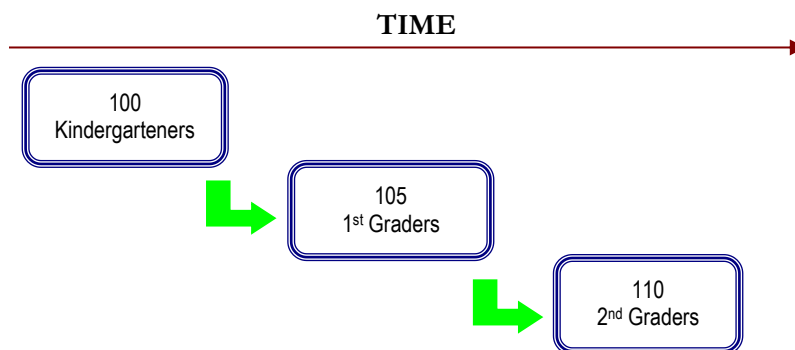
When looking ahead at a school district's enrollment over the next two, five, or ten years, it is helpful to approach the process from a global perspective. For example: How many new homes have been constructed each year? How many births have occurred each year in relation to the resident population? Is housing experiencing a turnover – if so, what is the composition of families moving in/out? Are more or less students attending private school or being home-schooled? What new educational policies are in place now that could affect student enrollment figures?

The data sets generated from questions such as these have led to the development of general methodologies to project future student enrollments. They are as follows:

Strongsville City School District

Cohort Survival Method

A cohort is a group of persons [in this case, students]. The cohort survival projection methodology uses previous live birth data and historical student enrollments to “age” a known population or cohort throughout the school grades. For instance, a cohort begins when a group of kindergarteners enrolls in grade K and moves to first grade the following year, second grade the next year, and so on.



A “survival ratio” is developed to track how this group of students grew or shrunk in number as they moved through the grade levels. By determining survival ratios for each grade transition [i.e., 1st to 2nd grade] over a ten-year period of time, patterns emerge and projection ratios can be developed to be used as a multiplier.

For example, if student enrollment has consistently increased from the 8th to the 9th grade over the past ten years, the survival ratios for each year would be greater than 100 percent. Through analysis of the survival ratios, the projection ratio is determined and is multiplied by the current 8th grade to develop a projection for next year’s 9th grade.

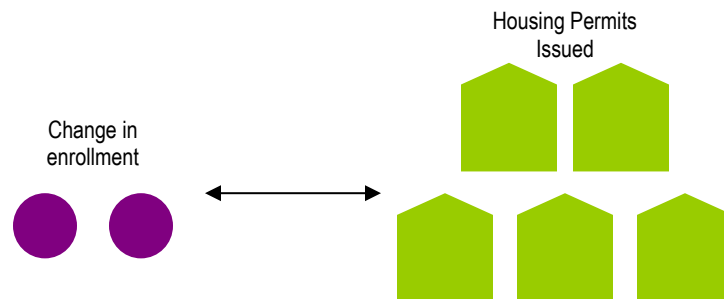
This methodology can be carried through to develop ten years of projection figures. Because there is not a grade cohort to follow for students coming into kindergarten, live birth counts are used to develop a survival ratio. Babies born five years previous to the kindergarten class are compared in number, and a ratio can be developed to project future kindergarten enrollments.

The cohort survival method is useful in areas where population is stable [relatively flat, growing steadily, or declining steadily], and where there have been no significant fluctuations in enrollment, births, and housing patterns from year to year.

Strongsville City School District

Housing

Enrollment projections can also be determined by analyzing the housing data for the areas that make up a school district. Yield factors can be established by comparing the historic change in enrollment from year to year divided by the total number of building or occupancy permits issued. For example, if student enrollment has increased by approximately 100 students each year and approximately 200 building permits have been issued each year for the past ten years, then the yield factor would be approximately .5 students per building permit.



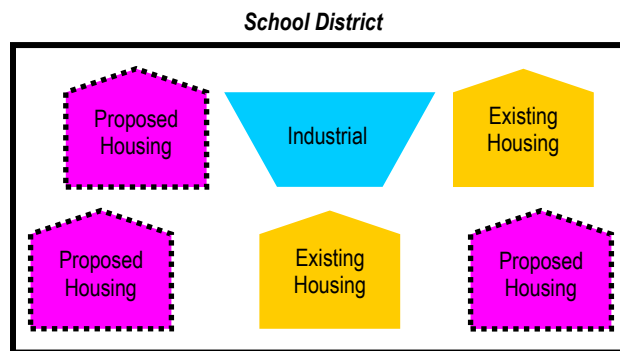
Once yield factors are established, the number of new students per year can be estimated by multiplying the yield factor by the number of projected new housing units. This method is effective when the rate of kindergarten enrollment far exceeds the live birth counts.

If housing demolitions are occurring in a district, these must also be taken into account. For instance, if housing demolitions/withdrawals have increased rapidly over recent years while new housing starts have remained relatively constant over many years, the conclusion may be that some of the new housing starts will simply be replacements for the families displaced by the demolitions. Of course, housing value and household composition would need to be further analyzed to confirm that this is indeed the case. It is possible that enrollment may remain flat or decline even though there is new housing occurring in the area.

Strongsville City School District

Land-Saturation Analysis

Housing data also drives the land-saturation analysis enrollment methodology. In areas where there is a high rate of development and the future development patterns in the area are clear, a “build-out” scenario can be developed. The scenario takes into consideration the remaining acreage to be developed, planned rate of completion, zoning policies, density per acre, type of housing, and ratios of school-age children per household type. This method is particularly useful in areas experiencing rapid growth.



Geographic Information Systems

While not a methodology, the need for better tools and easier manipulation of data has led to a new industry standard in planning – GIS [Geographic Information Systems]. GIS technology allows school districts to quickly analyze countless data sets including birth data, housing information, and enrollment statistics.

When paired with enrollment projections, GIS becomes an invaluable information-management and decision-making tool. Often, county or city offices are already implementing GIS technology and data can be shared and expanded among these organizations in the district. GIS tables and maps are included within this report illustrating population, age, and income estimates and projections.

The cohort survival was the primary method used in the development of the enrollment projections for the Strongsville City School District.

Strongsville City School District

HISTORICAL ENROLLMENT

Over the past ten years, student enrollment in the Strongsville City School District has increased by 261 students in grades Pre-K – 12, including Strongsville Electronic and Strongsville Online Learning Opportunity Academy students. Total enrollment for the 2025-26 school year is 5,746 students.

The following tables and graph illustrate the District’s Pre-K – 12 enrollment history from 2016-17 through 2025-26.

Strongsville City School District

Historical Enrollment

| Grade | 2016-17 | 2017-18 | 2018-19 | 2019-20 | 2020-21 | 2021-22 | 2022-23 | 2023-24 | 2024-25 | 2025-26 |
|--|---------|---------|---------|---------|---------|---------|---------|---------|---------|---------|
| Pre-K | 107 | 117 | 156 | 158 | 129 | 156 | 194 | 191 | 207 | 179 |
| K | 305 | 289 | 331 | 393 | 325 | 363 | 337 | 348 | 352 | 315 |
| 1 | 338 | 342 | 342 | 382 | 398 | 376 | 376 | 370 | 382 | 383 |
| 2 | 317 | 354 | 352 | 358 | 374 | 424 | 396 | 391 | 377 | 388 |
| 3 | 350 | 336 | 351 | 372 | 361 | 398 | 439 | 406 | 406 | 388 |
| 4 | 351 | 375 | 348 | 364 | 367 | 375 | 416 | 441 | 410 | 415 |
| 5 | 380 | 374 | 377 | 380 | 376 | 391 | 392 | 417 | 447 | 407 |
| 6 | 402 | 418 | 395 | 398 | 384 | 416 | 431 | 426 | 446 | 455 |
| 7 | 491 | 434 | 445 | 396 | 407 | 406 | 431 | 445 | 438 | 439 |
| 8 | 427 | 504 | 439 | 450 | 400 | 421 | 416 | 440 | 450 | 445 |
| 9 | 478 | 453 | 535 | 492 | 488 | 475 | 486 | 437 | 439 | 464 |
| 10 | 495 | 474 | 456 | 528 | 474 | 471 | 451 | 469 | 438 | 444 |
| 11 | 514 | 483 | 481 | 427 | 517 | 439 | 443 | 441 | 458 | 433 |
| 12 | 530 | 525 | 491 | 481 | 437 | 534 | 455 | 462 | 463 | 452 |
| Pre-K - 12 Total | 5,485 | 5,478 | 5,499 | 5,579 | 5,437 | 5,645 | 5,663 | 5,684 | 5,713 | 5,607 |
| Strongsville Electronic | 126 | 15 | 126 | 138 | 135 | 119 | 125 | 116 | 129 | 133 |
| Strongsville Online Learning Opportunity Academy | | | | | | 19 | 12 | 18 | 16 | 6 |
| Grand Total | 5,611 | 5,493 | 5,625 | 5,717 | 5,572 | 5,783 | 5,800 | 5,818 | 5,858 | 5,746 |

Source: Ohio Department of Education & Workforce, October Head Count; Strongsville City School District

Strongsville City School District

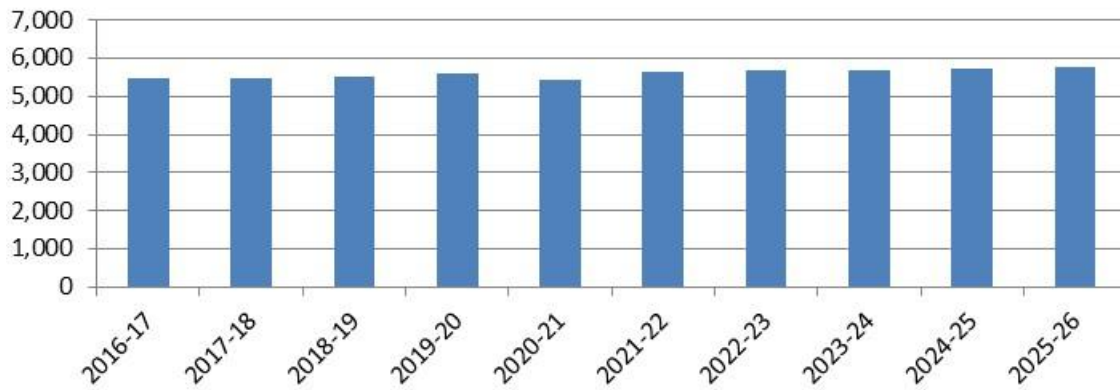
Historical Enrollment by Grade Group

| Grade | 2016-17 | 2017-18 | 2018-19 | 2019-20 | 2020-21 | 2021-22 | 2022-23 | 2023-24 | 2024-25 | 2025-26 |
|--|---------|---------|---------|---------|---------|---------|---------|---------|---------|---------|
| Pre-K | 107 | 117 | 156 | 158 | 129 | 156 | 194 | 191 | 207 | 179 |
| K - 5 | 2,041 | 2,070 | 2,101 | 2,249 | 2,201 | 2,327 | 2,356 | 2,373 | 2,374 | 2,296 |
| 6 - 8 | 1,320 | 1,356 | 1,279 | 1,244 | 1,191 | 1,243 | 1,278 | 1,311 | 1,334 | 1,339 |
| 9 - 12 | 2,017 | 1,935 | 1,963 | 1,928 | 1,916 | 1,919 | 1,835 | 1,809 | 1,798 | 1,793 |
| Pre-K - 12 Total | 5,485 | 5,478 | 5,499 | 5,579 | 5,437 | 5,645 | 5,663 | 5,684 | 5,713 | 5,607 |
| Strongsville Electronic | 126 | 15 | 126 | 138 | 135 | 119 | 125 | 116 | 129 | 133 |
| Strongsville Online Learning Opportunity Academy | | | | | | 19 | 12 | 18 | 16 | 6 |
| Grand Total | 5,611 | 5,493 | 5,625 | 5,717 | 5,572 | 5,783 | 5,800 | 5,818 | 5,858 | 5,746 |

Source: Ohio Department of Education & Workforce, October Head Count; Strongsville City School District

Strongsville City School District

Strongsville City School District
Historical Enrollment



Strongsville City School District

COMMUNITY SCHOOL ENROLLMENT

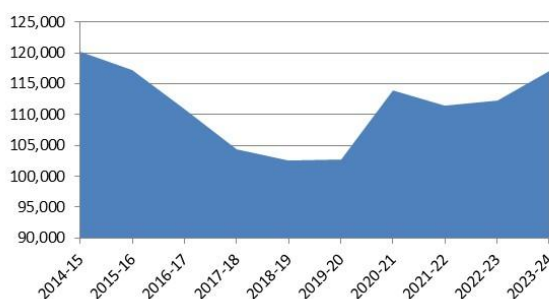
From 2014-15 to 2023-24, community school enrollment decreased by approximately 7% from 120,200 students in 381 community schools to 116,980 students in 336 community schools. However, there was an increase of 11% in enrollment from the 2019-20 to the 2020-21 school year. Enrollment declined by over 2,000 students from 2020-21 to 2021-22, but has since increased.

State of Ohio
Community School Enrollment (Pre-K - 12)

| Grade | 2014-15 | 2015-16 | 2016-17 | 2017-18 | 2018-19 | 2019-20 | 2020-21 | 2021-22 | 2022-23 | 2023-24 |
|-------------|---------|---------|---------|---------|---------|---------|---------|---------|---------|---------|
| Grand Total | 120,200 | 117,282 | 110,961 | 104,430 | 102,625 | 102,654 | 113,900 | 111,377 | 112,238 | 116,980 |

Source: Ohio Department of Education & Workforce, Ohio Community Schools Annual Report December 2024

Ohio Community School Enrollment

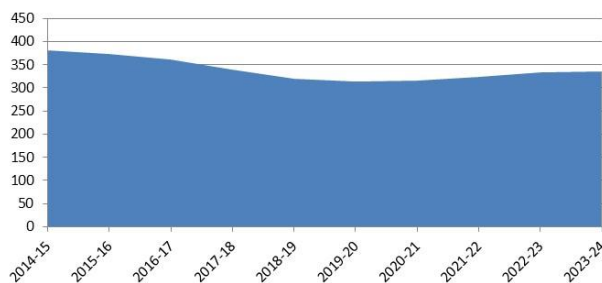


State of Ohio
Number of Community Schools

| Grade | 2014-15 | 2015-16 | 2016-17 | 2017-18 | 2018-19 | 2019-20 | 2020-21 | 2021-22 | 2022-23 | 2023-24 |
|-------------|---------|---------|---------|---------|---------|---------|---------|---------|---------|---------|
| Grand Total | 381 | 373 | 362 | 340 | 320 | 313 | 315 | 324 | 334 | 336 |

Source: Ohio Department of Education & Workforce, Ohio Community Schools Annual Report December 2024

Number of Community Schools in Ohio



Strongsville City School District

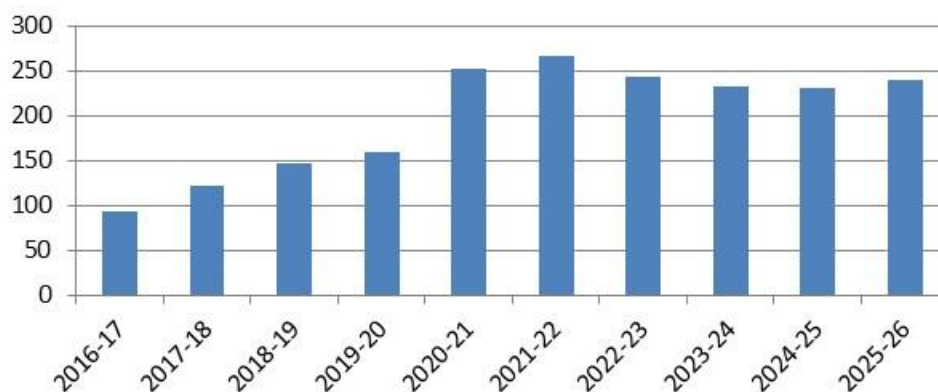
Since 2016-17, the number of Strongsville City School District students attending community schools has increased from 93 to 240 students with some fluctuation. Enrollment of Strongsville City School District students attending community schools should be closely monitored as it may have a significant impact on District enrollment in the future.

**Strongsville City School District
Community School Enrollment**

| | 2016-17 | 2017-18 | 2018-19 | 2019-20 | 2020-21 | 2021-22 | 2022-23 | 2023-24 | 2024-25 | 2025-26 |
|-------------|---------|---------|---------|---------|---------|---------|---------|---------|---------|---------|
| Grand Total | 93 | 122 | 146 | 160 | 252 | 266 | 244 | 232 | 230 | 240 |

Source: Ohio Department of Education & Workforce, October Head Count; Strongsville City School District

**Strongsville City School District
Students Attending Community Schools**



Strongsville City School District

OPEN ENROLLMENT

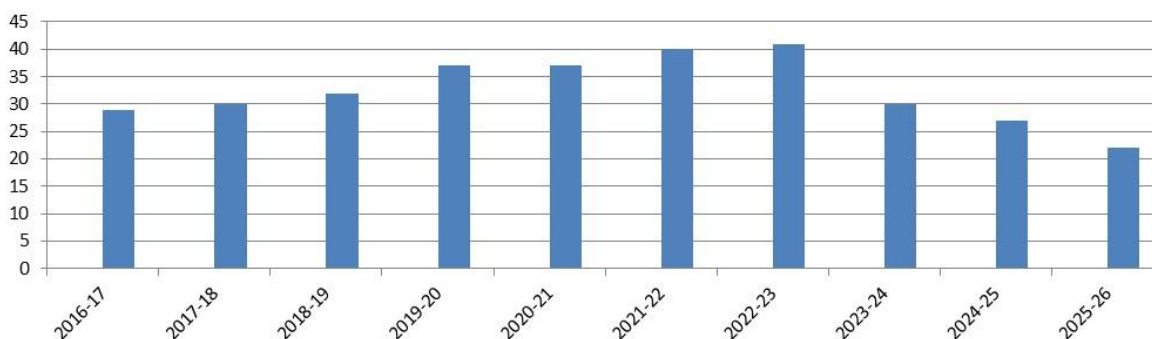
Since 2016-17, the number of Strongsville City School District students “open enrolling” out of the District has decreased from 29 to 22 students with some fluctuation. There are no students “open enrolling” into the District. Significant changes in the number of students “open enrolling” into or out of the District from year to year can impact enrollment projections and should be monitored.

**Strongsville City School District
Open Enrollment - OUT**

| | 2016-17 | 2017-18 | 2018-19 | 2019-20 | 2020-21 | 2021-22 | 2022-23 | 2023-24 | 2024-25 | 2025-26 |
|-------------|---------|---------|---------|---------|---------|---------|---------|---------|---------|---------|
| Grand Total | 29 | 30 | 32 | 37 | 37 | 40 | 41 | 30 | 27 | 22 |

Source: Ohio Department of Education & Workforce, October Head Count; Strongsville City School District

**Strongsville City School District
Open Enrollment - Out**



Strongsville City School District

HOMESCHOOL ENROLLMENT

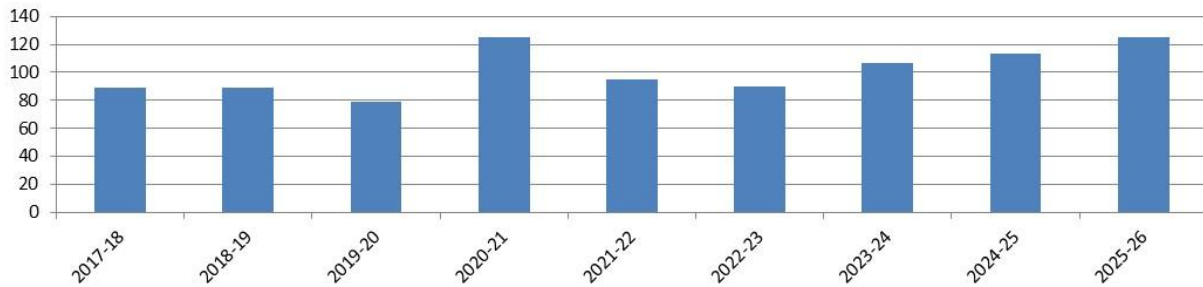
Since 2017-18, the number of Strongsville City School District students being homeschooled has increased from 89 to 125 students. Significant changes in the number of students homeschooled from year to year can impact enrollment projections and should be monitored.

**Strongsville City School District
Homeschool Student Enrollment**

| | 2017-18 | 2018-19 | 2019-20 | 2020-21 | 2021-22 | 2022-23 | 2023-24 | 2024-25 | 2025-26 |
|-------|---------|---------|---------|---------|---------|---------|---------|---------|---------|
| Total | 89 | 89 | 79 | 125 | 95 | 90 | 107 | 113 | 125 |

Source: Washington Post <https://www.washingtonpost.com/education/interactive/2023/homeschooling-growth-data-by-district/>; Strongsville City School District

**Strongsville City School District
Homeschool Student Enrollment**



LIVE BIRTH DATA

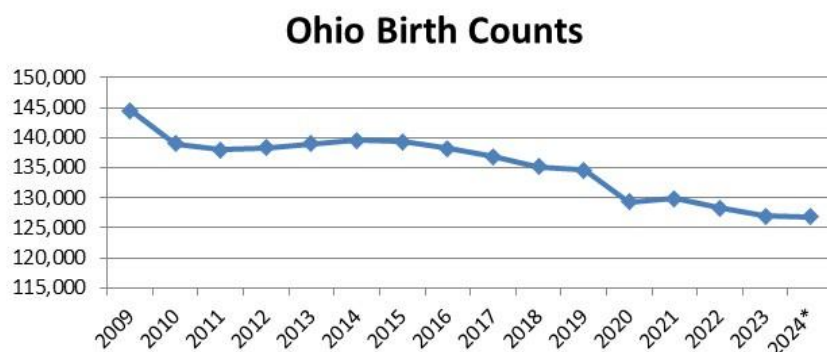
Utilization of live birth data is recommended when projecting future kindergarten enrollments as it provides a helpful overall trend. The live birth counts are used in determining a birth-to-kindergarten survival ratio. This ratio identifies the percentage of children born in a representative area who attend kindergarten in the District five years later. The survival ratios for birth-to-kindergarten as well as grades 1-12 can be found later in this report.

The Ohio Department of Health [ODH] information warehouse provides information about live birth events for Ohio residents. Information about events occurring outside of Ohio to Ohio residents is included. Information about events occurring inside Ohio to non-Ohio residents is not included.

Data is arranged by the residence of the mother. For example, if a mother lives in Powell, Delaware County but delivers her baby in Columbus, Franklin County, the birth is counted in Powell, Delaware County.

Live birth counts are different from live birth rates. The live birth count is the actual number of live births. A birth rate is the number of births per 1,000 women in a specified population group. Birth rates are provided for counties only and for 9 age groups from 10-14 years to 45+ years.

From 2009 to 2011, Ohio births declined by 12,760 and then somewhat leveled off through 2014. Since 2014, births have dropped each year with a slight uptick from 2020 to 2021. From 2019 to 2024, births declined by approximately 6 percent.



Strongsville City School District

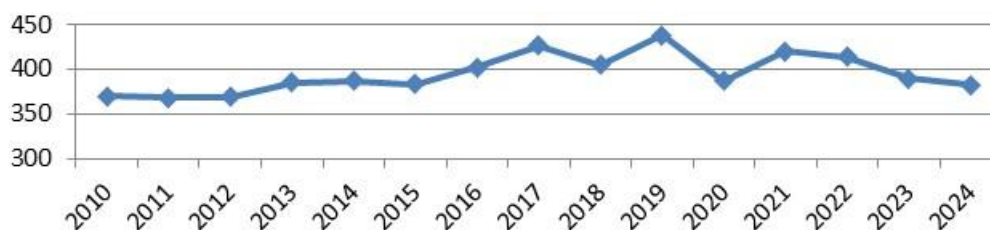
The following table and graph include the live birth counts for zip codes 44136 and 44149.

**Strongsville City School District
Live Birth Count by Zip Code
2010-2024**

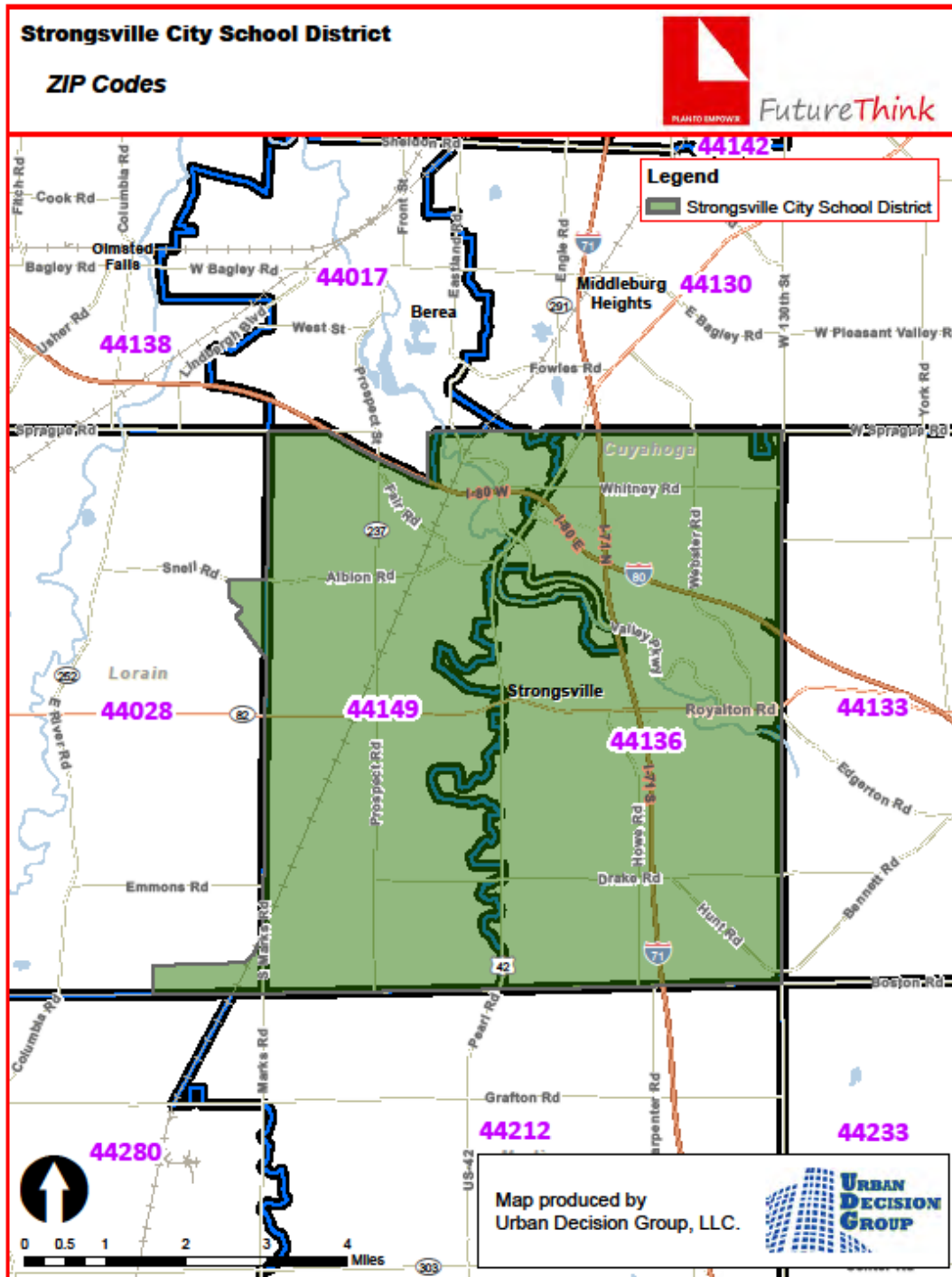
| Year | 44136 | 44149 | Total |
|------|-------|-------|-------|
| 2010 | 215 | 155 | 370 |
| 2011 | 221 | 147 | 368 |
| 2012 | 219 | 150 | 369 |
| 2013 | 231 | 154 | 385 |
| 2014 | 237 | 150 | 387 |
| 2015 | 240 | 143 | 383 |
| 2016 | 247 | 155 | 402 |
| 2017 | 248 | 179 | 427 |
| 2018 | 239 | 166 | 405 |
| 2019 | 258 | 180 | 438 |
| 2020 | 232 | 155 | 387 |
| 2021 | 243 | 177 | 420 |
| 2022 | 249 | 165 | 414 |
| 2023 | 231 | 159 | 390 |
| 2024 | 236 | 146 | 382 |

Source: Ohio Department of Health, Bureau of Vital Statistics

**Strongsville City School District
Live Birth Count by Zip Code**



Strongsville City School District



Strongsville City School District

DEMOGRAPHICS

The Strongsville City School District is comprised of Strongsville City and Columbia Township in Cuyahoga and Lorain counties. General demographic data is included in the following tables for the areas located completely or partially in the District.

General Demographic Information

| | Cuyahoga County | State of Ohio |
|-------------------------|-----------------|---------------|
| Per Capita Income | \$41,559 | \$39,455 |
| Median Household Income | \$62,823 | \$69,680 |
| Persons Below Poverty | 16.2% | 13.2% |

Source: US Census, American Community Survey, 2023 5-Year Estimates

Total Population

| | 2010 Census | 2020 Census |
|-------------------|-------------|-------------|
| Cuyahoga County | 1,280,122 | 1,264,817 |
| Strongsville City | 44,750 | 46,491 |
| Lorain County | 301,356 | 312,964 |
| Columbia Township | 7,040 | 7,411 |

Source: 2010 Census: DEC Summary File 2; 2020 Decennial Census

Also included are block group estimates and projections provided by Esri. Esri uses a time series of estimates from the U.S. Census Bureau that includes the latest estimates and inter-censal estimates adjusted for error of closure. The Census Bureau's time series is consistent, but testing has revealed improved accuracy by using a variety of sources to track county population trends.

Esri also employs a time series of building permits and housing starts plus residential deliveries. Data sources are integrated and then analyzed by Census Block Groups.

Sources of data include:

- ▶ Supplementary Surveys of the Census Bureau
- ▶ Bureau of Labor Statistics' (BLS) Local Area Unemployment Statistics
- ▶ BLS Occupational Employment Statistics
- ▶ InfoUSA
- ▶ U.S. Bureau of the Census' Current Population Survey
- ▶ National Planning Association Data Service

Strongsville City School District

Below is a list of definitions as they appear on the U.S. Census Bureau website, to aid in interpretation of the following tables and maps.

Household:

A household includes all the people who occupy a housing unit as their usual place of residence.

Average family size:

A measure obtained by dividing the number of members of families by the total number of families (or family householders).

Family household (Family):

A family includes a householder and one or more people living in the same household who are related to the householder by birth, marriage, or adoption. All people who are related to the householder are regarded as members of his or her family. A family household may contain people not related to the householder, but those people are not included as part of the householder's family in census tabulations. Thus, the number of family households is equal to the number of families, but family households may include more members than do families. A household can contain only one family for purposes of census tabulations. Not all households contain families since a household may comprise a group of unrelated people or one person living alone.

Householder:

The person, or one of the people, in whose name the home is owned, being bought, or rented. If there is no such person present, any household member 15 years old and over can serve as the householder for the purposes of the census. Two types of householders are distinguished: a family householder and a nonfamily householder. A family householder is a householder living with one or more people related to him or her by birth, marriage, or adoption. The householder and all people in the household related to him are family members. A nonfamily householder is a householder living alone or with nonrelatives only.

Strongsville City School District

The following tables illustrate the current estimates and 5-year population projections based on block groups that comprise the state and school district, indicating areas of current and projected growth. The tables have been developed to determine selected age group projections and projections for household income, family size, and total households.

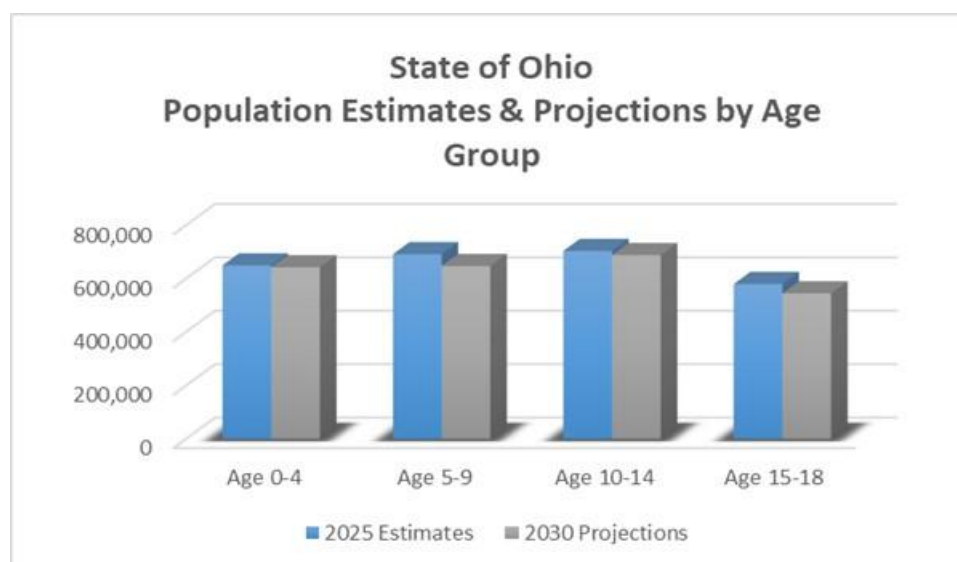
The total population in the State of Ohio is 11,855,695. This population is projected to increase by 51,917 people, or less than 1% over a 5-year period.

The 0-18-year-old population in the State currently totals 2,624,704. This population is projected to decrease by 102,202 children, or approximately 4 percent.

The median age is projected to increase by approximately 2% from 40.5 to 41.4 years of age.

| State of Ohio | 2025 Estimates | 2030 Projections | Change 2025-30 | Change 2025-30 (%) |
|------------------|----------------|------------------|----------------|--------------------|
| Total Population | 11,855,695 | 11,907,612 | 51,917 | 0.4% |
| Age 0-4 | 649,600 | 642,406 | -7,194 | -1.1% |
| Age 5-9 | 691,593 | 647,324 | -44,269 | -6.4% |
| Age 10-14 | 703,671 | 688,157 | -15,514 | -2.2% |
| Age 15-18 | 579,840 | 544,615 | -35,225 | -6.1% |
| Total Age 0-18 | 2,624,704 | 2,522,502 | -102,202 | -3.9% |
| Median Age | 40.5 | 41.4 | 0.9 | 2.2% |

Source: Esri

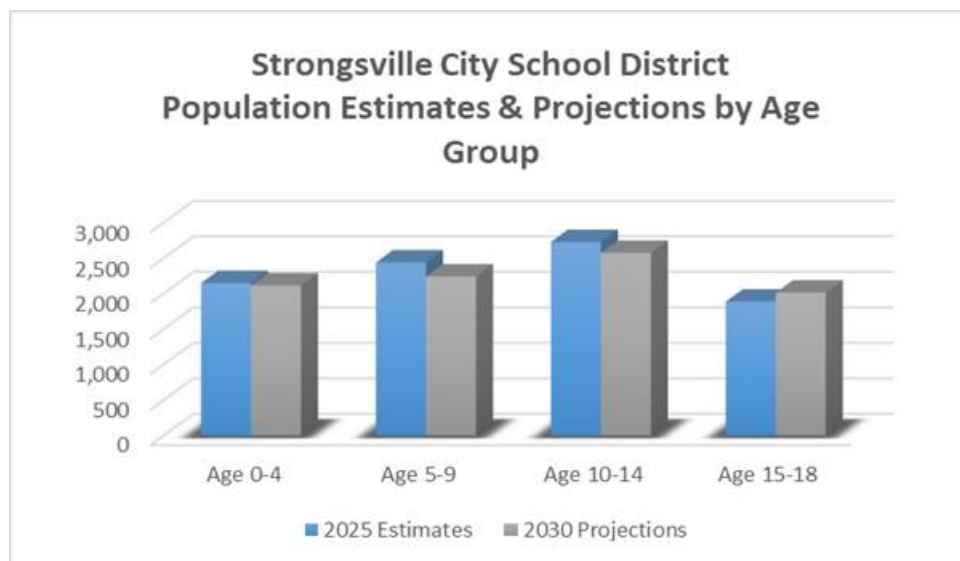


Strongsville City School District

The total population in the District is 45,626. This population is projected to decrease by 522 people, or approximately 1% over a 5-year period. The 0-18-year-old population in the District currently totals 9,205. This population is projected to decrease by 256 people, or approximately 3 percent. The median age is projected to increase by approximately 1%, from 45.7 to 46.3 years of age.

| Strongsville City School District | 2025 Estimates | 2030 Projections | Change 2025-30 | Change 2025-30 (%) |
|-----------------------------------|----------------|------------------|----------------|--------------------|
| Total Population | 45,626 | 45,104 | -522 | -1.1% |
| Age 0-4 | 2,149 | 2,115 | -34 | -1.6% |
| Age 5-9 | 2,440 | 2,243 | -197 | -8.1% |
| Age 10-14 | 2,728 | 2,575 | -153 | -5.6% |
| Age 15-18 | 1,888 | 2,016 | 128 | 6.8% |
| Total Age 0-18 | 9,205 | 8,949 | -256 | -2.8% |
| Median Age | 45.7 | 46.3 | 0.6 | 1.3% |

Source: Esri



Strongsville City School District

Median and average household incomes in the State are both projected to increase by approximately 12% over a 5-year period. The average family size is projected to stay the same, and the total number of family households is projected to decrease by less than 1 percent.

| State of Ohio | 2025 Estimates | 2030 Projections | Change 2025-30 | Change 2025-30 (%) |
|--------------------------|----------------|------------------|----------------|--------------------|
| Median Household Income | \$71,022 | \$79,764 | \$8,742 | 12.3% |
| Average Household Income | \$100,017 | \$112,180 | \$12,163 | 12.2% |
| Average Family Size | 3.03 | 3.03 | 0.00 | 0.0% |
| Total Family Households | 2,960,120 | 2,959,878 | -242 | 0.1% |

Source: Esri

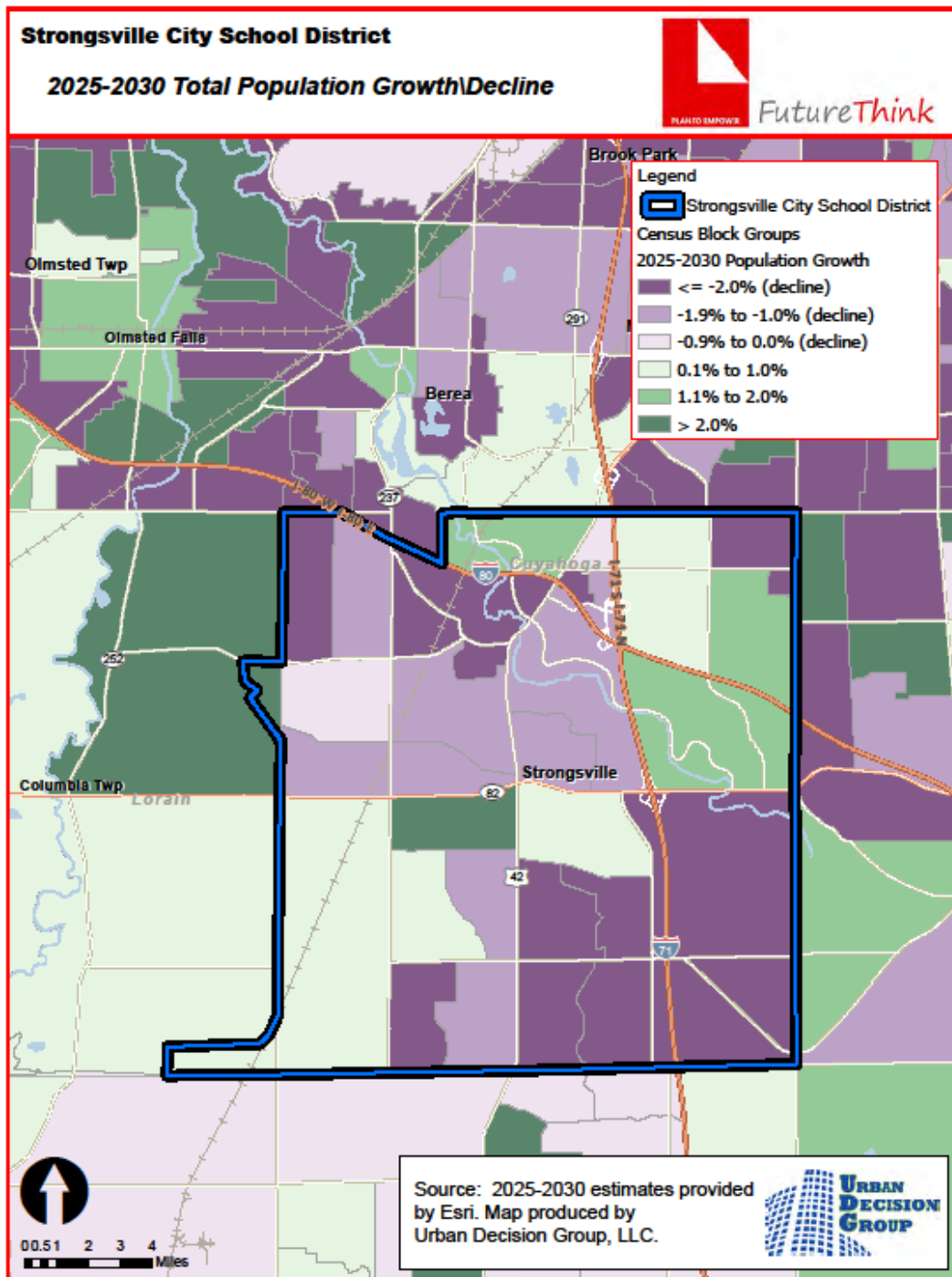
Median and average household incomes in the District are projected to increase by approximately 19% and 14%, respectively over a 5-year period. The average family size is projected to decrease slightly, and the total number of family households is projected to decrease by approximately 1 percent.

| Strongsville City School District | 2025 Estimates | 2030 Projections | Change 2025-30 | Change 2025-30 (%) |
|-----------------------------------|----------------|------------------|----------------|--------------------|
| Median Household Income | \$111,838 | \$132,771 | \$20,933 | 18.7% |
| Average Household Income | \$142,084 | \$161,852 | \$19,768 | 13.9% |
| Average Family Size | 3.00 | 2.99 | -0.01 | -0.3% |
| Total Family Households | 12,588 | 12,440 | -148 | -1.2% |

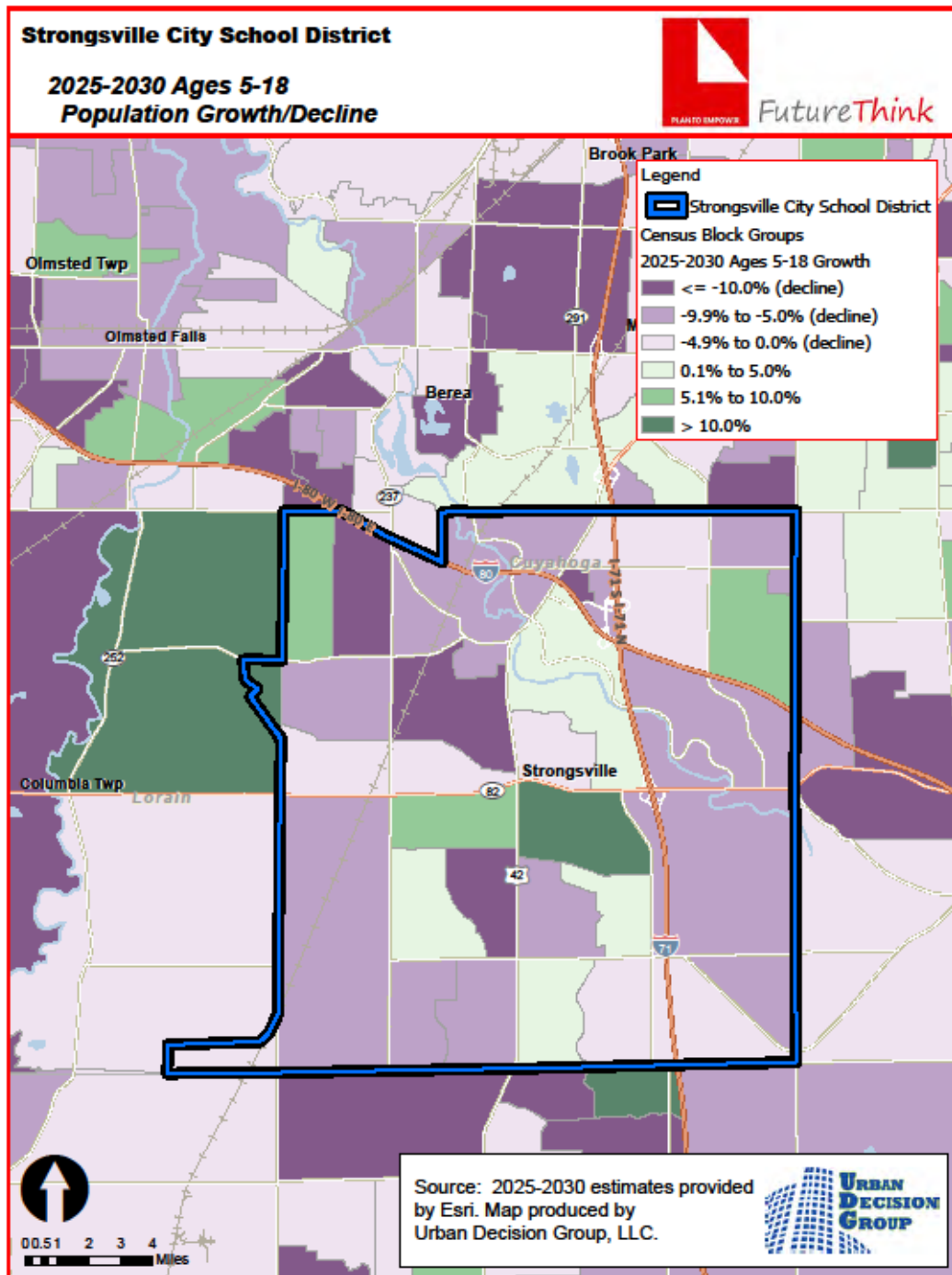
Source: Esri

The maps on the following pages illustrate the data identified in the tables. The color coding identifies areas within the District that may be increasing or decreasing at different rates than others.

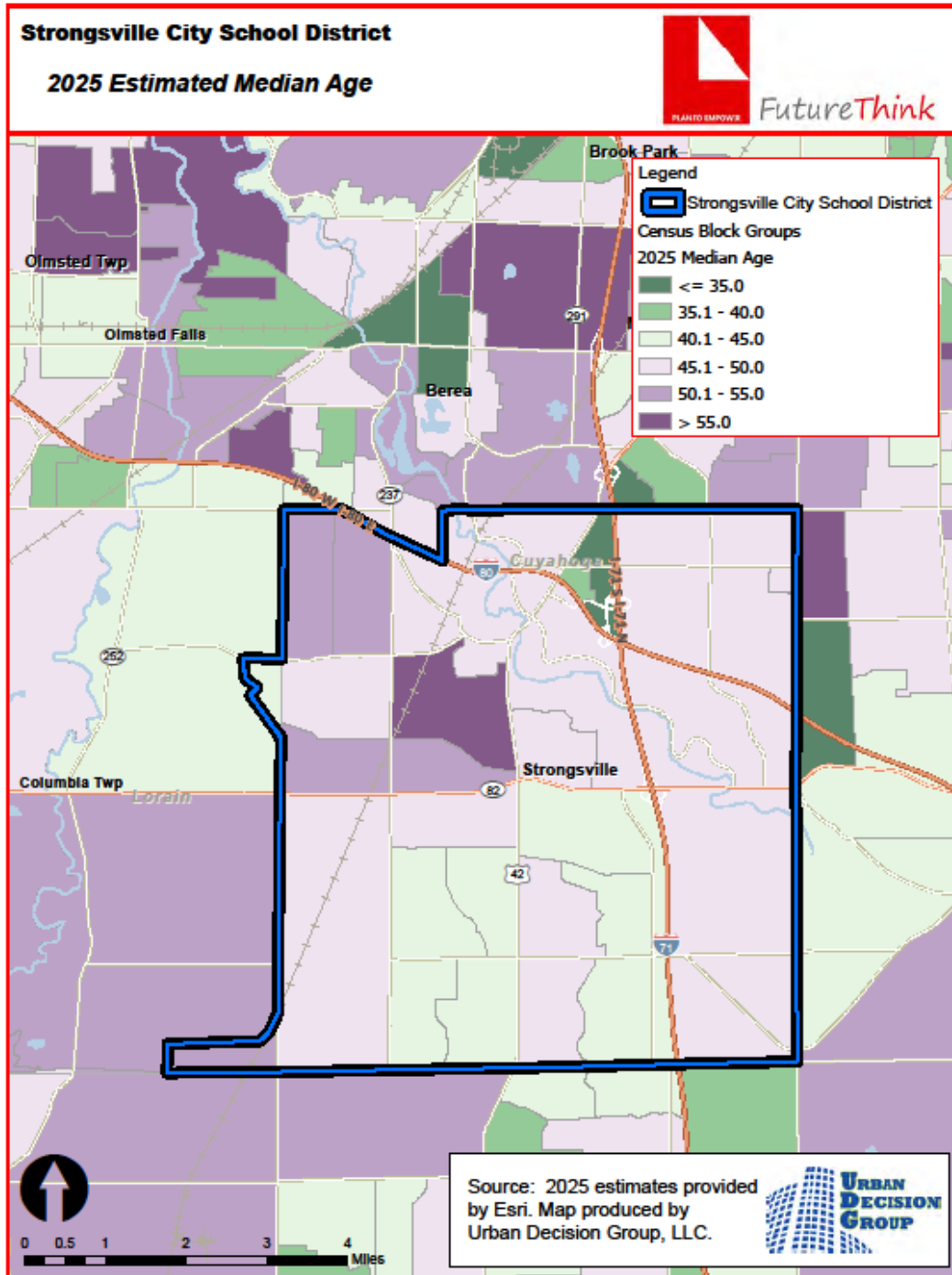
Strongsville City School District



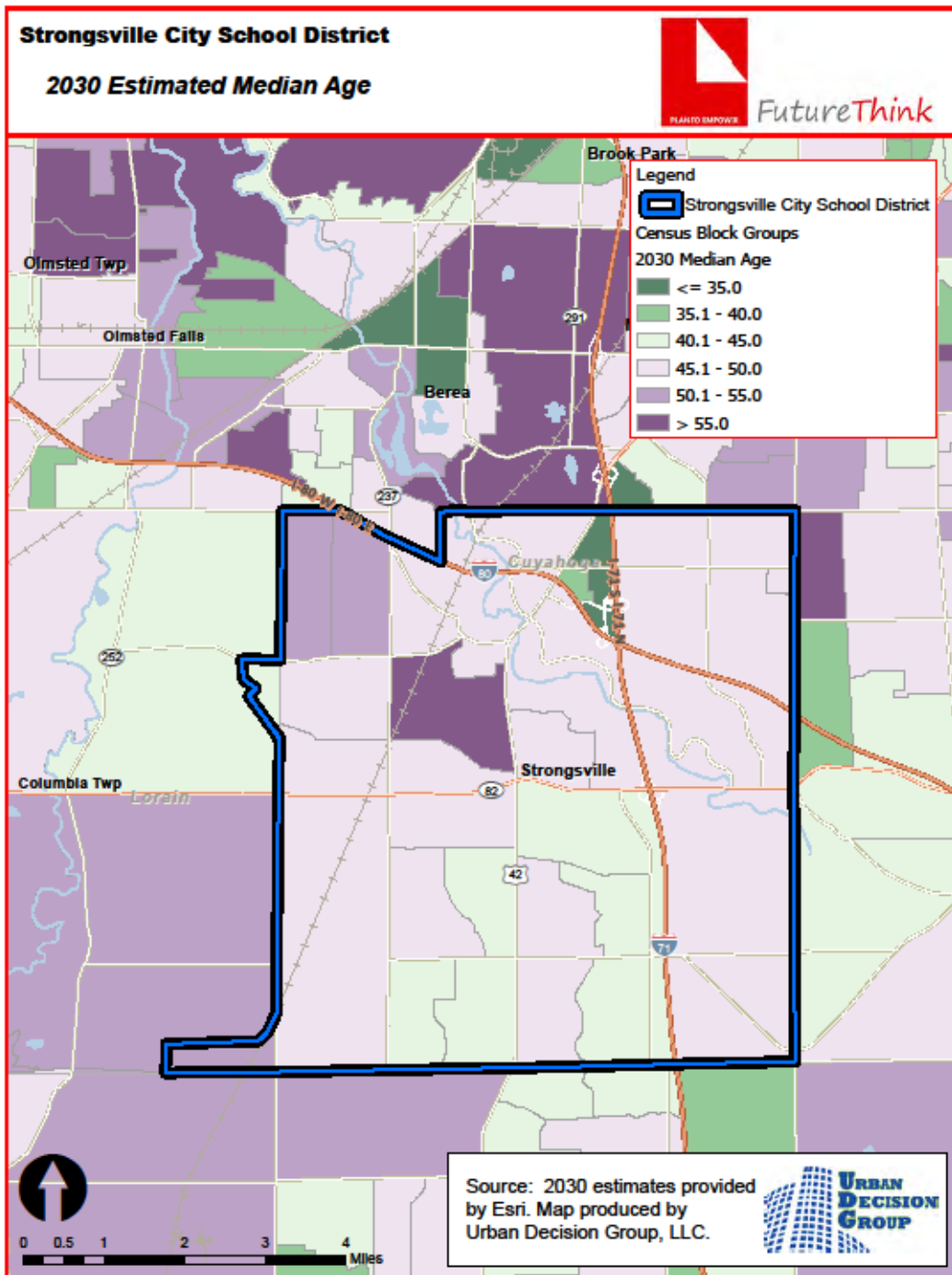
Strongsville City School District



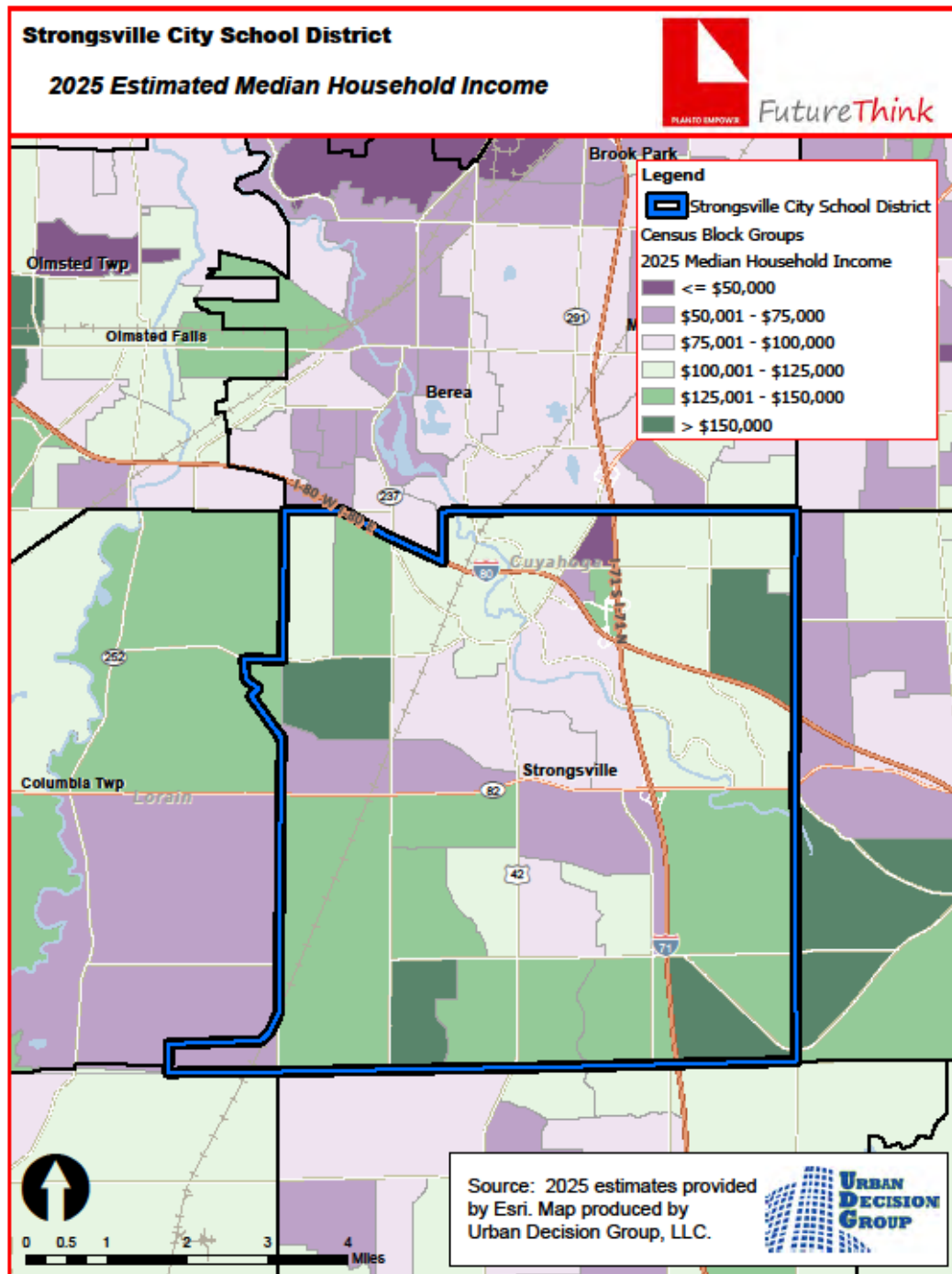
Strongsville City School District



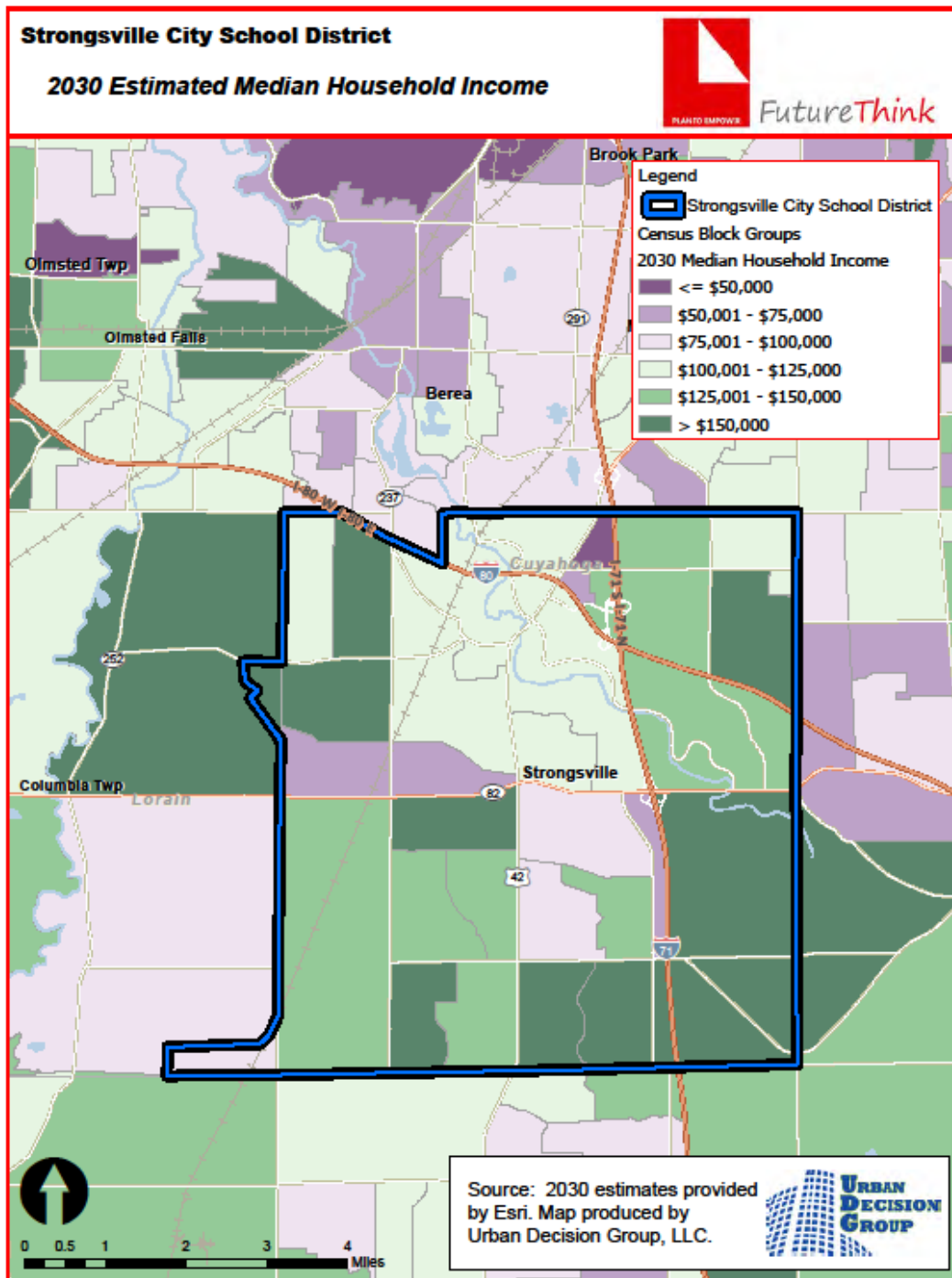
Strongsville City School District



Strongsville City School District



Strongsville City School District



Strongsville City School District

HOUSING INFORMATION

The table below illustrates the number of single-family dwelling building permits issued each year in Strongsville City, Columbia Township, and Cuyahoga and Lorain counties.

of Building Permits Issued for Single Family Dwellings

| Year | Strongsville City | Columbia Township | Cuyahoga County | Lorain County |
|-------|-------------------|-------------------|-----------------|---------------|
| 2015 | 97 | 26 | 702 | 699 |
| 2016 | 99 | 22 | 719 | 681 |
| 2017 | 129 | 53 | 728 | 766 |
| 2018 | 62 | 47 | 644 | 946 |
| 2019 | 44 | 43 | 570 | 964 |
| 2020 | 74 | 60 | 619 | 1,049 |
| 2021 | 30 | 175 | 752 | 1,030 |
| 2022 | 14 | 172 | 639 | 932 |
| 2023 | 14 | 198 | 526 | 820 |
| 2024 | 13 | 250 | 663 | 1,091 |
| 2025* | 19 | 176 | 340 | 634 |

Source: SOCDS Building Permits Database

*preliminary through August 2025

Strongsville City School District

SURVIVAL RATIOS

The chart below demonstrates the changes in enrollment as students move through the system. Percentages greater than 100 indicate that there are more students than there were in the previous grade the previous year. In other words, there was growth and new students entered the system. Percentages less than 100 indicate that there was decline with students leaving the system.

- ▶ Birth to Kindergarten: This ratio indicates the number of children born in the area who attend kindergarten in the District 5 years later. Percentages less than 100% result from movement out of the district, attendance at a non-public or charter school, or residence in another district within the same area.

The following table illustrates the survival ratios for the Strongsville City School District.

| from | to | birth -> K | K->1 | 1->2 | 2->3 | 3->4 | 4->5 | 5->6 | 6->7 | 7->8 | 8->9 | 9->10 | 10->11 | 11->12 |
|------|--------------------|------------|----------|---------|--------|---------|--------|--------|--------|--------|----------|---------|---------|----------|
| 2016 | 2017 | 78.3% | 112.1% | 104.7% | 106.0% | 107.1% | 106.6% | 110.0% | 108.0% | 102.6% | 106.1% | 99.2% | 97.6% | 102.1% |
| 2017 | 2018 | 86.0% | 118.3% | 102.9% | 99.2% | 103.6% | 100.5% | 105.6% | 106.5% | 101.2% | 106.2% | 100.7% | 101.5% | 101.7% |
| 2018 | 2019 | 101.6% | 115.4% | 104.7% | 105.7% | 103.7% | 109.2% | 105.6% | 100.3% | 101.1% | 112.1% | 98.7% | 93.6% | 100.0% |
| 2019 | 2020 | 84.9% | 101.3% | 97.9% | 100.8% | 98.7% | 103.3% | 101.1% | 102.3% | 101.0% | 108.4% | 96.3% | 97.9% | 102.3% |
| 2020 | 2021 | 90.3% | 115.7% | 106.5% | 106.4% | 103.9% | 106.5% | 110.6% | 105.7% | 103.4% | 118.8% | 96.5% | 92.6% | 103.3% |
| 2021 | 2022 | 78.9% | 103.6% | 105.3% | 103.5% | 104.5% | 104.5% | 110.2% | 103.6% | 102.5% | 115.4% | 94.9% | 94.1% | 103.6% |
| 2022 | 2023 | 85.9% | 109.8% | 104.0% | 102.5% | 100.5% | 100.2% | 108.7% | 103.2% | 102.1% | 105.0% | 96.5% | 97.8% | 104.3% |
| 2023 | 2024 | 80.4% | 109.8% | 101.9% | 103.8% | 101.0% | 101.4% | 107.0% | 102.8% | 101.1% | 99.8% | 100.2% | 97.7% | 105.0% |
| 2024 | 2025 | 82.7% | 110.5% | 102.6% | 104.5% | 103.2% | 101.7% | 105.1% | 102.5% | 103.7% | 104.7% | 104.3% | 102.7% | 101.7% |
| | average | 85.43% | 110.722% | 103.40% | 103.6% | 102.90% | 103.8% | 107.1% | 103.9% | 102.1% | 108.493% | 98.598% | 97.273% | 102.677% |
| | standard deviation | 6.754% | 5.257% | 2.370% | 2.296% | 2.367% | 2.956% | 2.947% | 2.263% | 0.979% | 5.579% | 2.733% | 3.227% | 1.442% |

Strongsville City School District

ENROLLMENT PROJECTIONS

Enrollment projections were developed after analyzing the data collected in this report. The projections indicate an increase of 195 students in grades Pre-K through 12, including Strongsville Electronic and Strongsville Online Learning Opportunity Academy students, from the 2025-26 to the 2035-36 school year. The following tables and graph illustrate projected enrollments by grade and by grade group through the 2035-36 school year.

Strongsville City School District
Projected Enrollment

| Grade | 2025-26 Actual | 2026-27 | 2027-28 | 2028-29 | 2029-30 | 2030-31 | 2031-32 | 2032-33 | 2033-34 | 2034-35 | 2035-36 |
|--|-------------------|---------|---------|---------|---------|---------|---------|---------|---------|---------|---------|
| Pre-K | 179 | 205 | 202 | 190 | 186 | 192 | 192 | 192 | 192 | 192 | 192 |
| K | 315 | 353 | 348 | 327 | 321 | 332 | 332 | 332 | 332 | 332 | 332 |
| 1 | 383 | 346 | 387 | 382 | 360 | 352 | 365 | 365 | 365 | 365 | 365 |
| 2 | 388 | 397 | 358 | 401 | 395 | 372 | 365 | 378 | 378 | 378 | 378 |
| 3 | 388 | 402 | 411 | 372 | 416 | 410 | 386 | 378 | 392 | 392 | 392 |
| 4 | 415 | 399 | 413 | 423 | 382 | 427 | 421 | 397 | 389 | 403 | 403 |
| 5 | 407 | 422 | 406 | 421 | 430 | 388 | 435 | 429 | 404 | 395 | 410 |
| 6 | 455 | 437 | 453 | 435 | 452 | 462 | 417 | 467 | 460 | 433 | 425 |
| 7 | 439 | 468 | 449 | 466 | 448 | 464 | 475 | 429 | 480 | 473 | 446 |
| 8 | 445 | 447 | 476 | 457 | 474 | 455 | 472 | 483 | 436 | 488 | 481 |
| 9 | 464 | 471 | 473 | 503 | 483 | 501 | 482 | 500 | 511 | 461 | 516 |
| 10 | 444 | 461 | 468 | 470 | 500 | 480 | 498 | 479 | 496 | 508 | 458 |
| 11 | 433 | 436 | 452 | 459 | 461 | 491 | 471 | 489 | 470 | 487 | 498 |
| 12 | 452 | 446 | 448 | 465 | 472 | 474 | 505 | 485 | 503 | 483 | 501 |
| Pre-K - 12 Total | 5,607 | 5,690 | 5,744 | 5,771 | 5,780 | 5,800 | 5,816 | 5,803 | 5,808 | 5,790 | 5,797 |
| Strongsville Electronic | 133 | 128 | 129 | 130 | 130 | 130 | 131 | 130 | 131 | 130 | 130 |
| Strongsville Online Learning Opportunity Academy | 6 | 14 | 14 | 14 | 14 | 14 | 14 | 14 | 14 | 14 | 14 |
| Grand Total | 5,746 | 5,832 | 5,887 | 5,915 | 5,924 | 5,944 | 5,961 | 5,947 | 5,953 | 5,934 | 5,941 |

Source: FutureThink

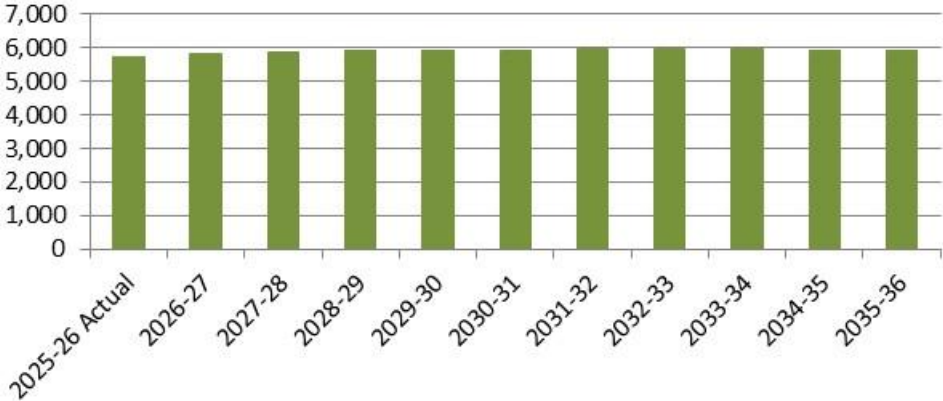
Strongsville City School District
Projected Enrollment by Grade Group

| Grade | 2025-26 Actual | 2026-27 | 2027-28 | 2028-29 | 2029-30 | 2030-31 | 2031-32 | 2032-33 | 2033-34 | 2034-35 | 2035-36 |
|--|-------------------|---------|---------|---------|---------|---------|---------|---------|---------|---------|---------|
| Pre-K | 179 | 205 | 202 | 190 | 186 | 192 | 192 | 192 | 192 | 192 | 192 |
| K - 5 | 2,296 | 2,319 | 2,323 | 2,326 | 2,304 | 2,281 | 2,304 | 2,279 | 2,260 | 2,265 | 2,280 |
| 6 - 8 | 1,339 | 1,352 | 1,378 | 1,358 | 1,374 | 1,381 | 1,364 | 1,379 | 1,376 | 1,394 | 1,352 |
| 9 - 12 | 1,793 | 1,814 | 1,841 | 1,897 | 1,916 | 1,946 | 1,956 | 1,953 | 1,980 | 1,939 | 1,973 |
| Pre-K - 12 Total | 5,607 | 5,690 | 5,744 | 5,771 | 5,780 | 5,800 | 5,816 | 5,803 | 5,808 | 5,790 | 5,797 |
| Strongsville Electronic | 133 | 128 | 129 | 130 | 130 | 130 | 131 | 130 | 131 | 130 | 130 |
| Strongsville Online Learning Opportunity Academy | 6 | 14 | 14 | 14 | 14 | 14 | 14 | 14 | 14 | 14 | 14 |
| Grand Total | 5,746 | 5,832 | 5,887 | 5,915 | 5,924 | 5,944 | 5,961 | 5,947 | 5,953 | 5,934 | 5,941 |

Source: FutureThink

Strongsville City School District

Strongsville City School District
Projected Enrollment



CONCLUSION

As with any projection, the District should pay close attention to live birth counts, enrollment in elementary schools, community school enrollment, open enrollment, and any housing growth. Each of these factors will have an impact on future student enrollment.

FutureThink is pleased to have had the opportunity to provide the District with enrollment projection services. We hope this document will provide the necessary information to make informed decisions about the future of the Strongsville City School District.