



# Kinder Connection

Helping families make the kindergarten transition with confidence

Winter 2026

## Kindergarten with Confidence: Building a Strong Reading Foundation

Ever wonder how kindergartners go from learning their ABCs to reading full sentences just weeks into the school year?

Take a peek into the kinder classroom at Fuller Elementary as students complete a phonics lesson. You may even learn some strategies to help your emerging reader at home!

[Click here or the image on the right to watch the video.](#)



## Kindergarten Your Way: Spotlighting Our Specialty Programs

At Tempe Elementary Schools, we believe every child enters kindergarten with unique strengths, talents, and boundless potential. As your family prepares for the exciting next step from preschool to kindergarten, we're proud to offer a variety of school options, including Specialty Programs thoughtfully tailored to support each child's growth, interests, and learning style.

Whether your child thrives through hands-on exploration, structured academic routines, or bilingual learning, we offer a program designed to help them grow. Learn about Specialty Programs directly from our expert kindergarten teachers, and discover which environment may be the best fit for your child:

- [\*\*Meyer Montessori\*\*](#)
- [\*\*Ward Traditional Academy\*\*](#)
- [\*\*Dual Language Program at Aguilar\*\*](#)

[Click here or the image on the right to hear why kinders love our Specialty Programs!](#)



[\*\*Read More from our Expert Teachers\*\*](#)

## Kindergarten Your Way

Explore what's going on in kindergarten around the district. No matter what you're looking for, Tempe Elementary Schools has it!



### SPRACALE ELEMENTARY

While students build independence in kindergarten, our expert teachers, like Mr. Oberholtzer at Spracale Elementary, also work with students one-on-one to check for understanding or provide extra support.

[Learn More About Spracale](#)



### THEW ELEMENTARY

The Thew community is built on a strong sense of belonging and a belief in every student. Starting in kindergarten and continuing through fifth grade, students participate in a Mindfulness class every week where they learn important soft skills needed to be successful citizens and learners, including problem solving, social skills, and self-regulation.

[Learn More About Thew](#)



### WOOD ELEMENTARY

Our schools not only provide a strong educational foundation, but they also provide opportunities to explore new things during Specials class. These kindergartners at Wood Elementary are exploring rhythm and emotion during Music class.

[Learn More About Wood](#)



### SHAMLEY SCHOOL

As a K-8 school, Shamley school provides students with the opportunity to thrive and build community within the same school throughout their entire elementary experience while also mentoring younger students. This year, fourth graders are assigned kinder reading buddies to encourage early literacy.

[Learn More About Shamley](#)

## Beyond the Classroom

Tempe Elementary Schools partners with the City of Tempe and other local organizations to provide access to before and after school care including KidZone, Boys & Girls Club, and more.

[Full List of Before and Afterschool Partners](#)

Learn about our resources at [tempeschools.org/resources](https://tempeschools.org/resources).



## Upcoming Events + Important Dates

### Kindergarten and Elementary Open Houses:

January 15, 2026 from 5:30 to 7:00 p.m. at all elementary campuses

### Enrollment Opens for 26-27 School Year:

January 15, 2026 at 5:30 p.m. online at [tempeschools.org/enroll](https://tempeschools.org/enroll) and in-person

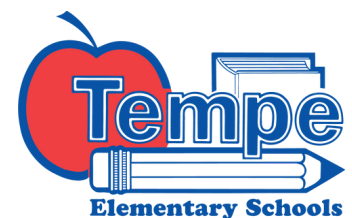
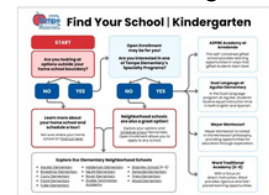
### Specialty School Applications Open Now!

Can't attend an Open House? Request a school tour today at [tempeschools.org/tour](https://tempeschools.org/tour)

## Find Your School

We've created the Find Your School Flowchart to help you learn more about Kindergarten options.

*Click to enlarge.*



Ranked **#1 Elementary School District** ('24, '25)

Ranking Arizona Opinion Poll

[tempeschools.org](https://tempeschools.org)