

New Elementary School on Greendale Road



➤ **Completed Work:**

- Installation of the Insulated Concrete Forms (ICF) is near completion at the first floor. The installation of the ICF at the east face of the building to the Kitchen Office 118 exterior window.
- Laying of interior CMU masonry and setting door frames continue in Area B and the laying of masonry has continued to Area A.
- The placing of the geothermal tendons continues.
- The retention pond appears to be operating properly.
- The placement of the second-floor hollow core planks is in progress.

➤ **Upcoming Work / Look Ahead:**

- Continue the installation of the geothermal system.
- Continuation of setting and filling the ICF forms.
- Completion of footing placement.
- Continue placing concrete floor slabs.
- Continue placement of the hollow core planks.

New Elementary School on Greendale Road



Geothermal Tendon Layout in Trench

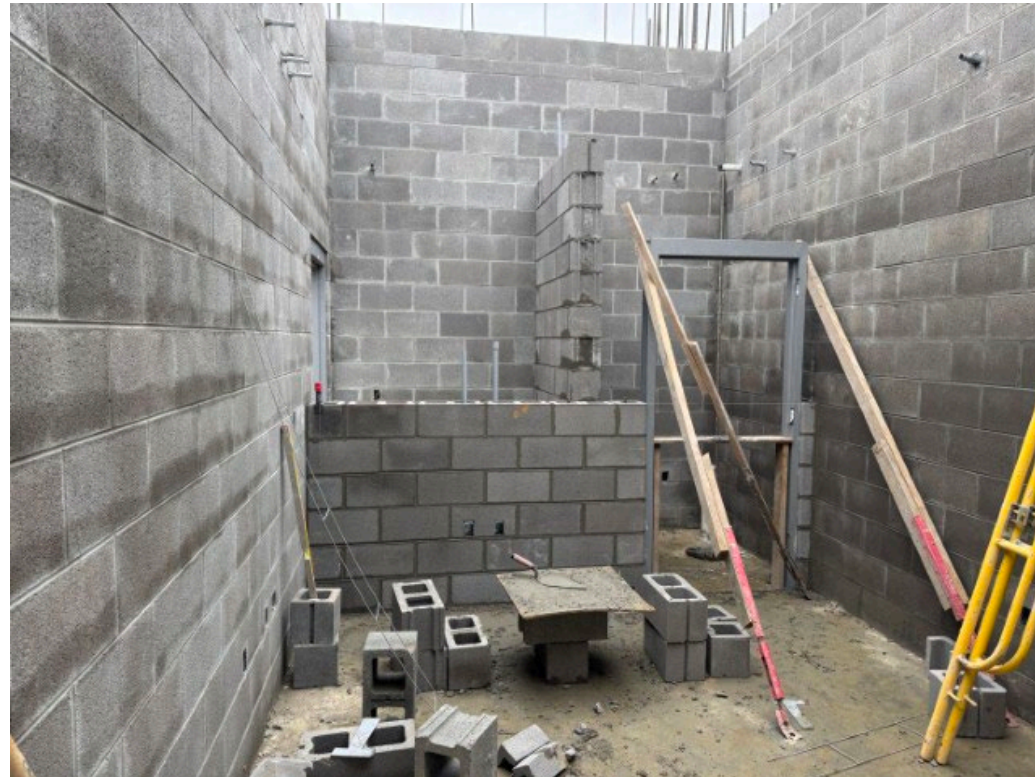


Week Ending January 9, 2026

New Elementary School on Greendale Road



Laying of Interior CMU Area B



Week Ending January 9, 2026

New Elementary School on Greendale Road



Placement of Hollow Core Planks at Corridor C02



Week Ending January 9, 2026

New Elementary School on Greendale Road



Upper Retention Pond



Week Ending January 9, 2026

New Elementary School on Greendale Road



Lower Retaining Pond



Week Ending January 9, 2026