



# FY26-27 BOE Tentative Approved Capital & Operating Budget

Lunda Asmani, CPFO  
BOE Chief Financial Officer | Norwalk Public Schools  
Joint City and BOE Finance Committee  
January 8, 2026

# FY26-27 BOE Budget Book

## I. Introduction

- Superintendent's Budget Message
- Budget Overview & Highlights
- FY26-27 Budget Drivers

## II. Organizational Section

- Connecticut Public School Funding Overview
- Factors Influencing the FY26-27 Budget

## III. Financial Section

- FY26-27 Budget Assumptions
- General Fund Line-Item Budget – Five-Year History
- Grant Funds Line-Item Budget – Five-Year History
- Food Services Line-Item Budget – Five-Year History

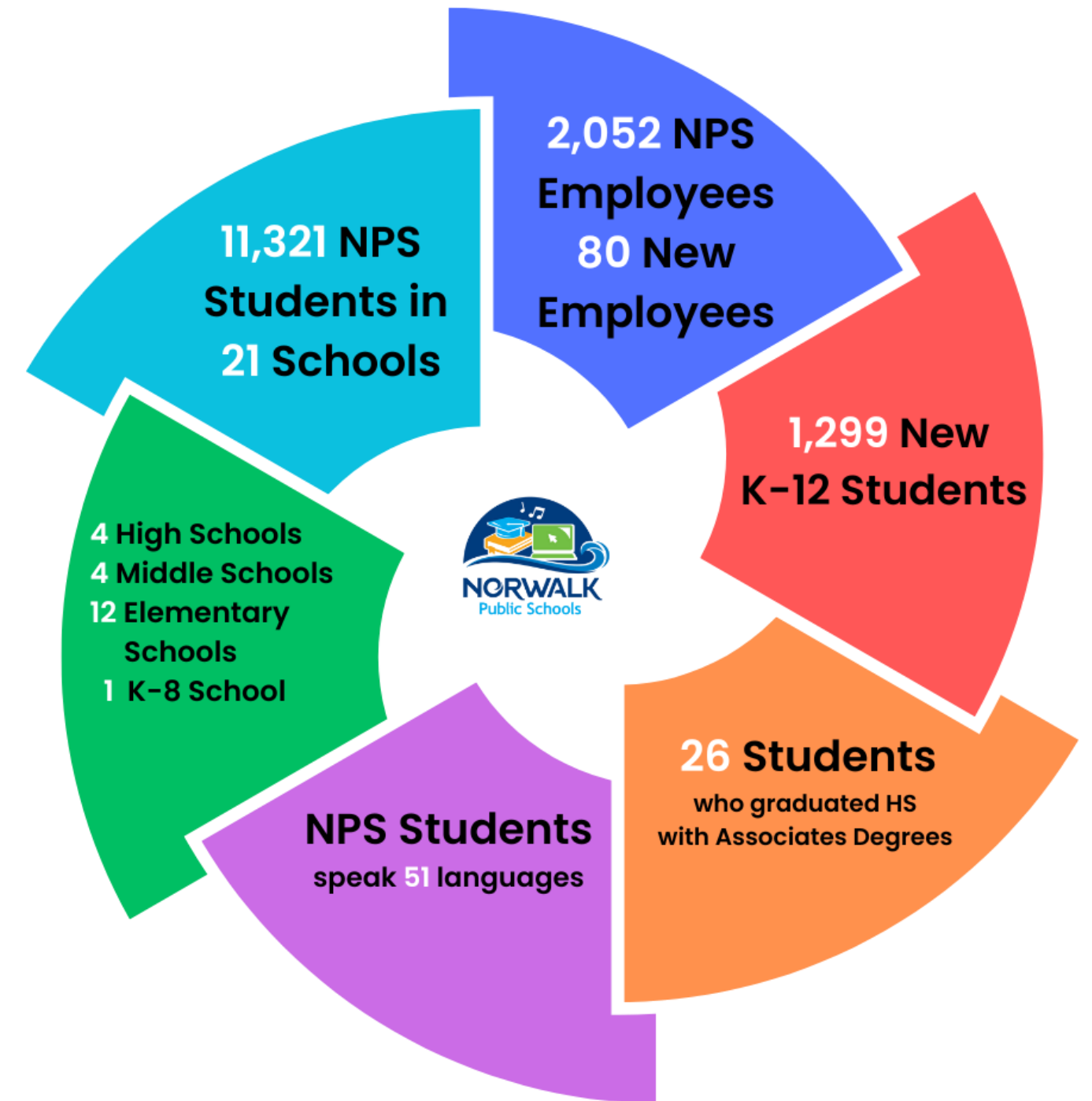
## IV. Informational Section

- Norwalk Public Schools Academic Achievements
- Enrollment Projections
- Four-Year Summary of Staffing Changes
- Four-Year Detailed Staffing Changes by Position Title, Location, and Funding Source

Scan to access the NPS  
Budget Website



# Norwalk Public Schools at a Glance

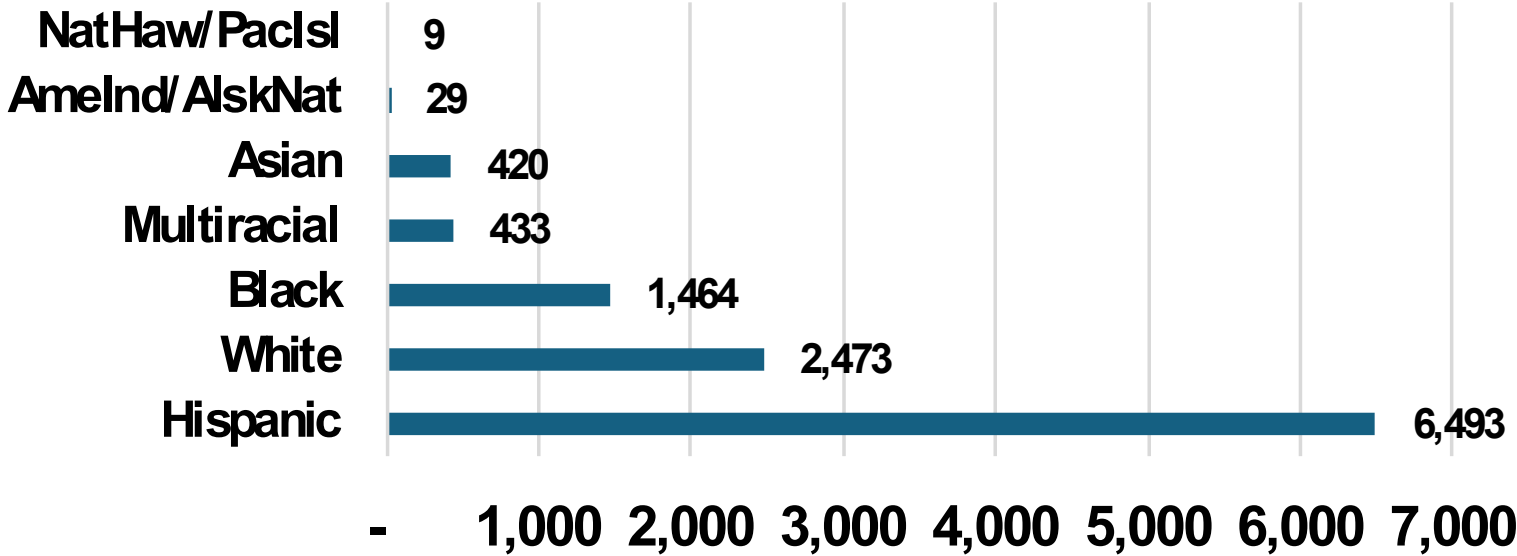


As of October 1, 2025

# Student Demographics Dashboard (October 1, 2025)

(includes Pre-K)

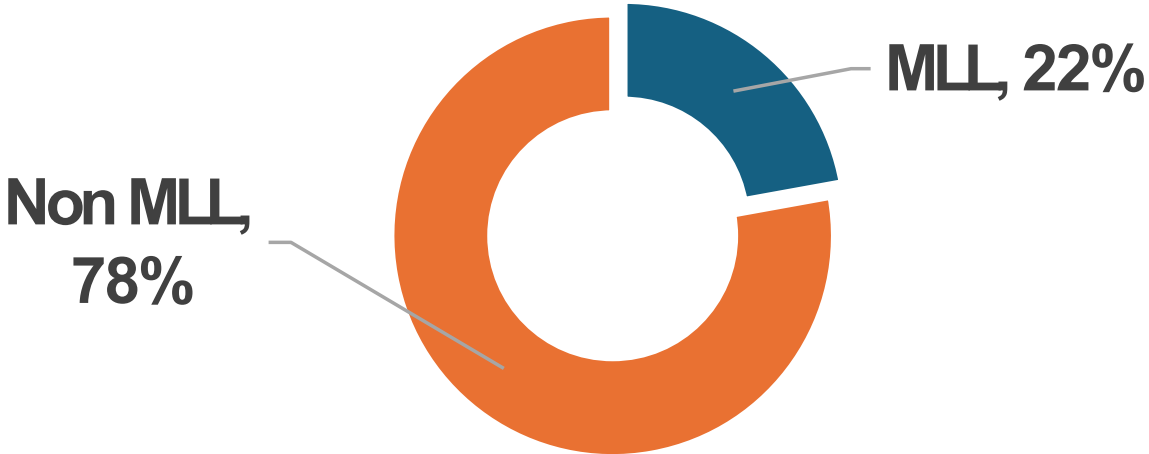
## Enrollment by Race and Ethnicity



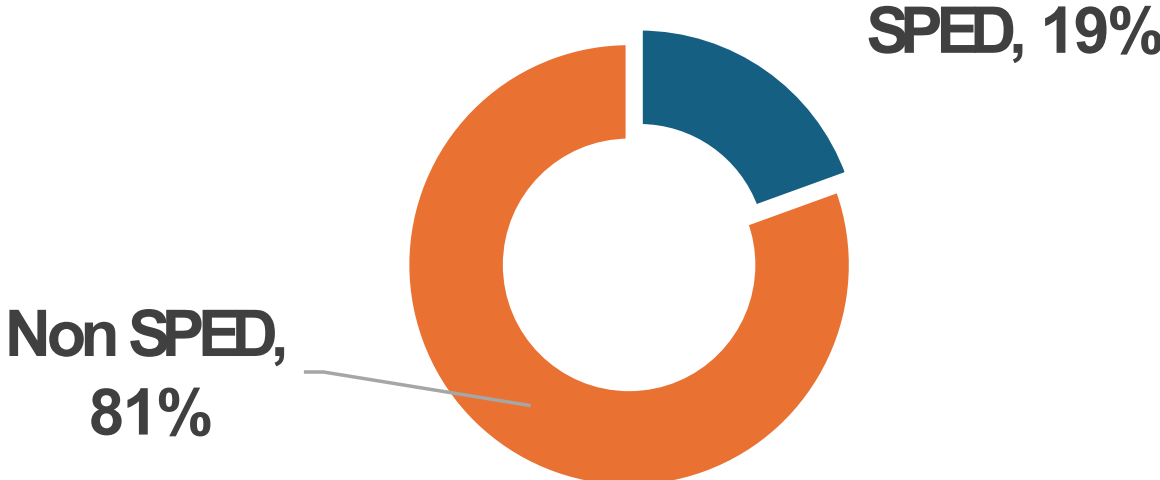
## Free and Reduced Lunch



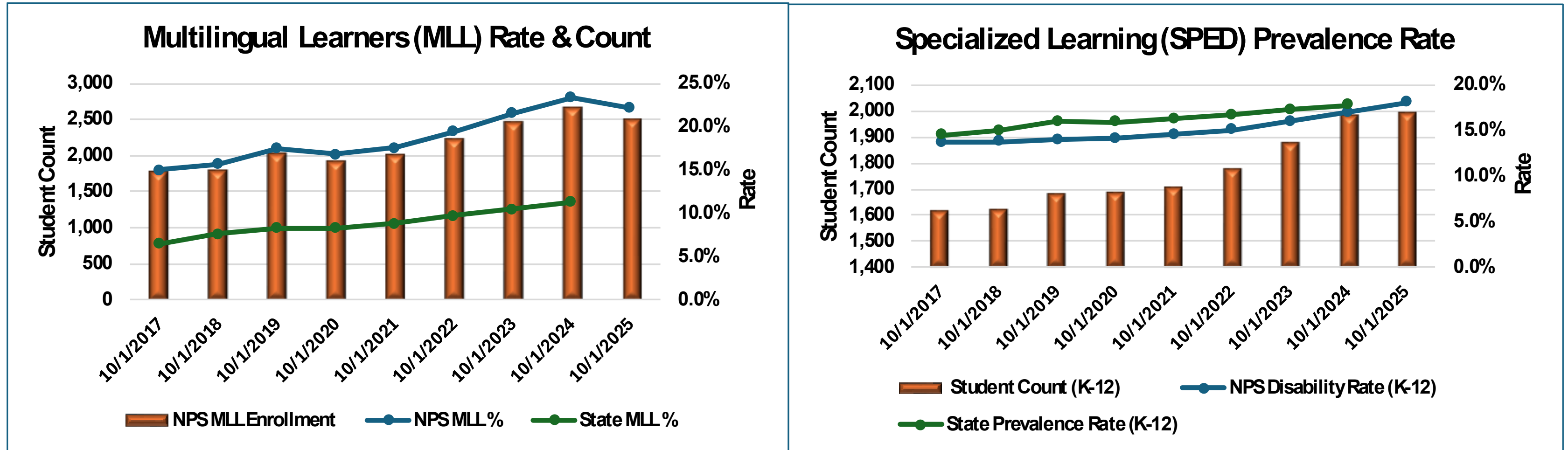
## Multilingual Learners (MLL)



## Specialized Education (SPED)

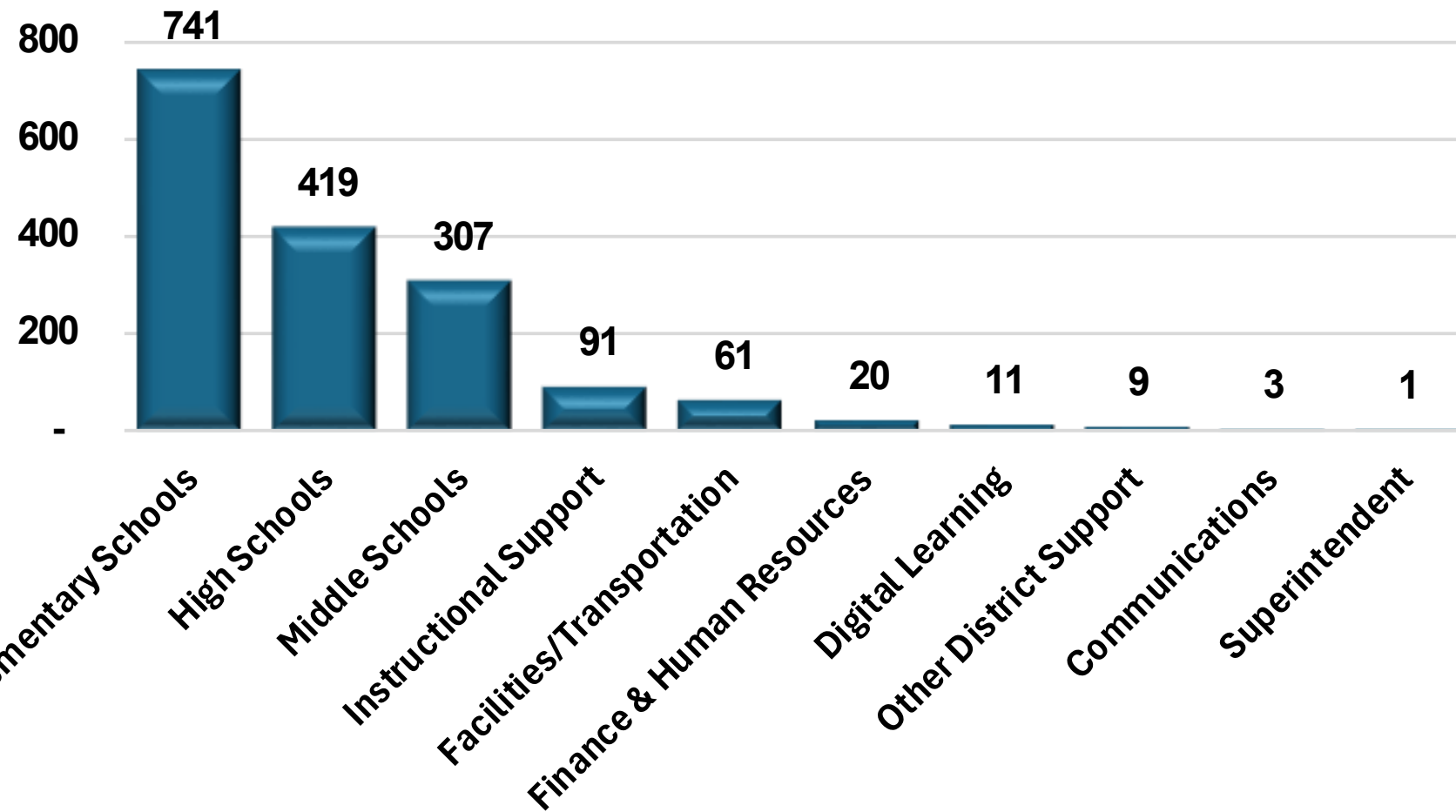


# Student Enrollment

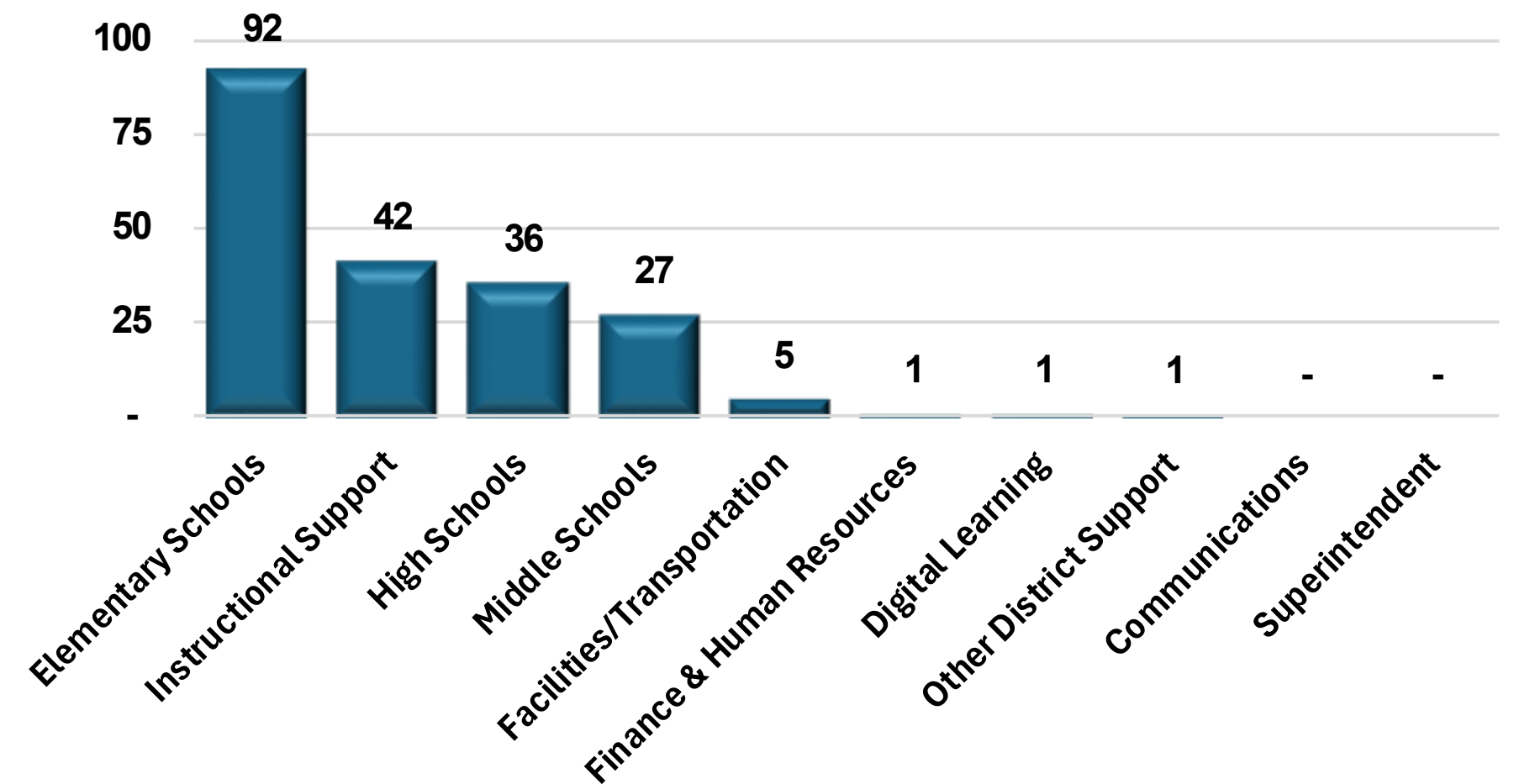


# Staffing Distribution

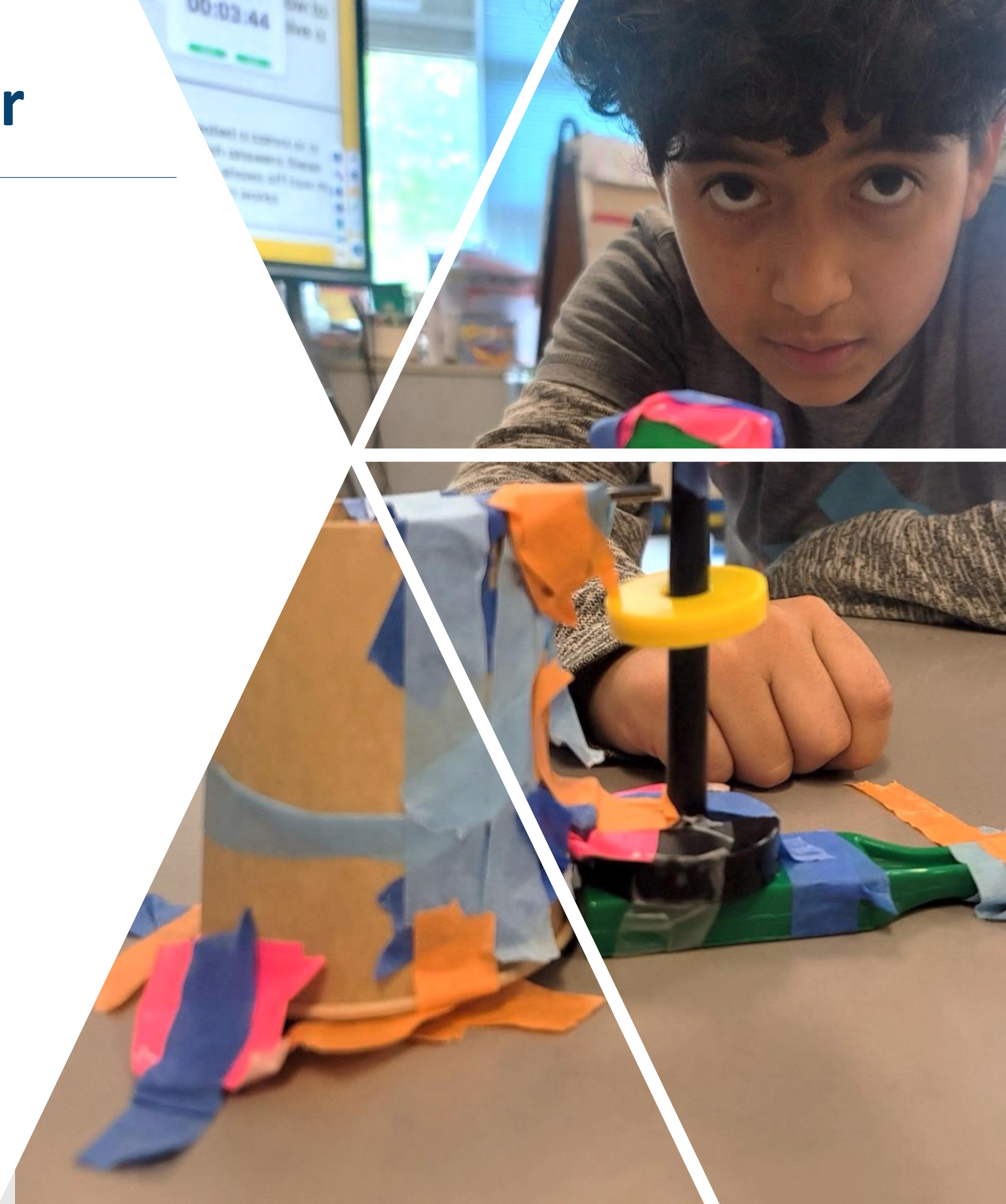
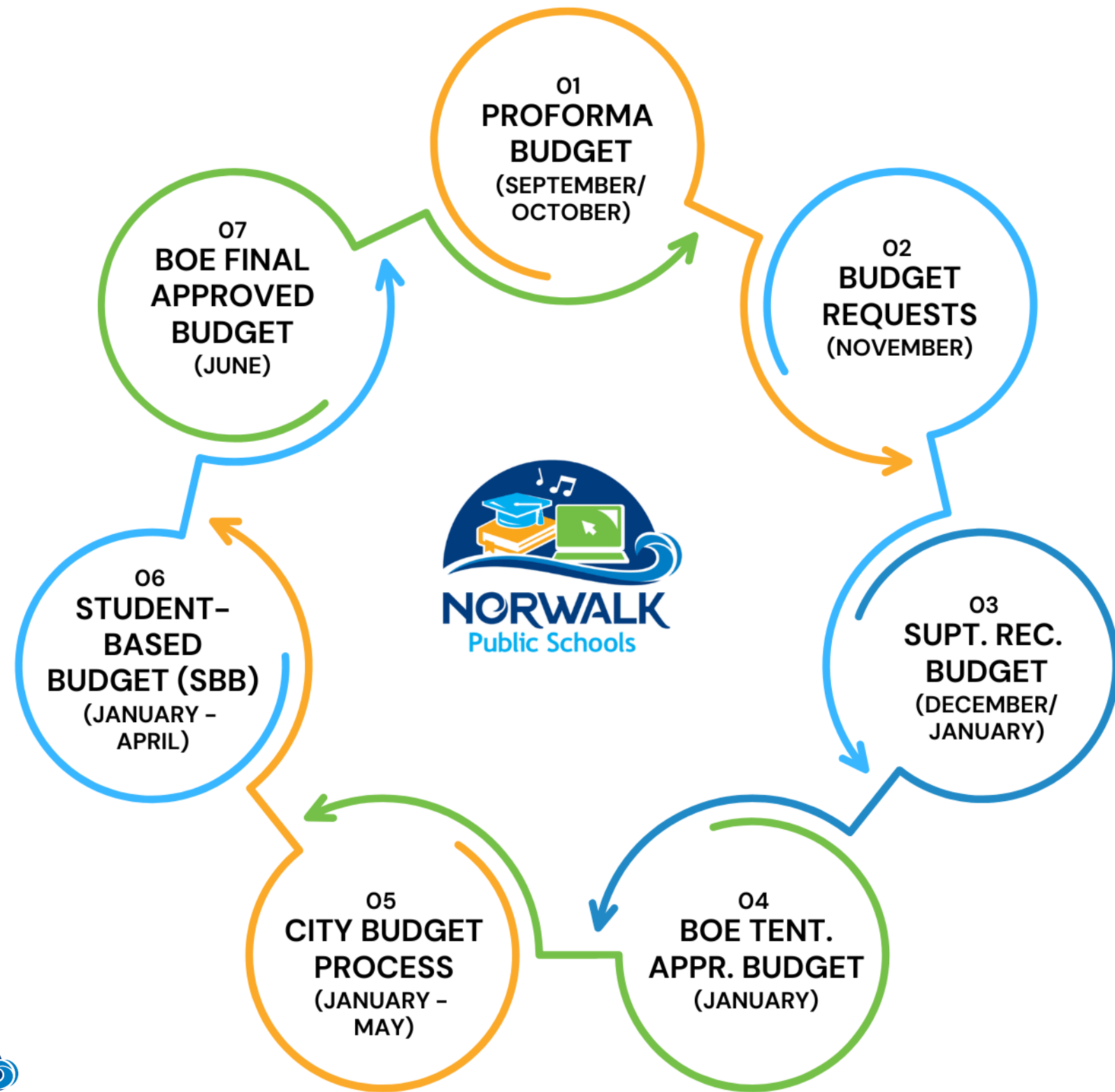
## Locally Funded Full-Time Equivalent Positions (1,662)



## Grant Funded Full-Time Equivalent Positions (205)



# How the Budget Comes Together





# BUDGET ENGAGEMENTS TO DATE

FOCUSING ON THE FISCAL YEAR

**2026-27 OPERATING AND CAPITAL BUDGETS**

#	Date	Meeting
01	9/10/25	BOE Finance Committee Meeting
02	9/16/25	BOE Business Meeting
03	9/24/25	Special Joint Finance Committee Public Hearing
04	10/21/25	BOE Business Meeting
05	11/12/25	BOE Finance Committee Meeting
06	11/12/25	BOE Workshop
07	11/18/25	BOE Business Meeting
08	11/19/25	Town Hall on FY26-27 Operating Budget
09	12/9/25	BOE Workshop on Superintendent Recommended Operating & Capital Budget
10	12/16/25	BOE Approves Superintendent Recommended Operating & Capital Budget
11	1/7/26	Budget Update to Elementary School Governance Councils
12	1/8/26	BOE & Common Council Joint Finance Committee Meeting

For details of each meeting, visit **BoardDocs** located on the BOE website  
 BOE website: [bit.ly/NPSboeWebsite](https://bit.ly/NPSboeWebsite)



# UPCOMING BUDGET ENGAGEMENTS

FOCUSING ON THE FISCAL YEAR

**2026-27 OPERATING  
AND CAPITAL BUDGETS**

#	Date	Meeting
13	<b>1/13/26</b>	Recap Presentation of the FY26-27 BOE Tentative Approved Operating & Capital Budget to the BOE
14	<b>1/14/26</b>	Budget Update to Secondary School Governance Councils
15	<b>2/11/26</b>	FY26-27 Budget Development Update to BOE Finance Committee
16	<b>2/12/26</b>	Common Council Finance Committee Holds Public Hearing on Operating Budget; Operating Cap Recommended to Council
17	<b>2/24/26</b>	Common Council Adopts Preliminary Expenditure Cap
18	<b>3/26/26</b>	BET Public Hearing on Operating Budget

# Recap: FY26 Budget Reconciliation

## *FY25-26 Budget Reconciliation*

<i>Description</i>	<i>AMOUNT</i>	
<i>FY25 Approved Budget</i>	<u>233,360,344</u>	
<b><i>FY26 BOE Tentative Approved Budget</i></b>	<b><u>\$255,955,975</u></b>	<b>9.7%</b>
<b><i>FY26 BET Budget Cap</i></b>	<b><u>\$242,694,758</u></b>	<b>4.0%</b>
<i>Reductions from request needed to meet initial FY25-26 Cap</i>	13,261,217	
<i>Additional City Funding for the BOE Budget</i>	4,500,000	
<i>Revised reductions from request needed to meet the BOE Amended FY25-26 Cap</i>	8,761,217	
<b><i>Total BOE Amended Budget</i></b>	<b><u>\$247,194,758</u></b>	<b>5.9%</b>

*In June 2025, Norwalk Public Schools received an additional \$6.5 million through a combination of City of Norwalk reserve funds and State of Connecticut grants to reconcile the FY25-26 Board of Education Operating Budget. Of this amount, \$2.0 million was appropriated to the BOE health insurance account, and \$4.5 million was applied to the FY25-26 BOE Operating Budget.*

April  
2025

**\$242.7 million**

2025-26 BET Appropriation to BOE

June  
2025

**\$4.5 million**

Reinstated 53.5 Positions  
(Funded by City and State)

**\$247.2 million**

City Amended 2025-26 Appropriation to BOE  
Includes \$4.5 Million reinstated positions

Dec  
2025

**\$263.2 million**

BOE Tentative 2026-27 Approved Budget Request to the City  
Includes \$4.5 Million reinstated positions

## Road to the Budget

- The 2026-27 BOE request is \$263,148,792.
- This request represents a 6.5% increase from the amended 2025-26 budget.
- This request includes the \$4.5 million in local funding allocated to preserve 53.5 essential positions.



# FY26-27 General Fund

	2023-24	2024-25	2025-26	2025-26 \$4.5M	2025-26	2026-27	FY26-FY27 CHANGE	
	ACTUAL	ACTUAL	APPROVED	APPROPRIATION	AMENDED	TENT. APPROV.	AMOUNT	%
Salaries	140,581,320	146,902,487	145,418,500	3,589,622	149,008,121	155,495,951	6,487,830	4.4%
Benefits	34,927,104	31,682,752	37,925,044	890,378	38,815,422	43,164,742	4,349,320	11.2%
Professional & Technical Services	7,921,625	9,438,513	8,724,807	20,000	8,744,807	9,897,635	1,152,828	13.2%
Property Services	9,407,164	9,843,551	11,234,552	-	11,234,552	11,318,309	83,757	0.7%
Other Student Services	23,932,852	26,020,306	27,175,378	-	27,175,378	29,109,116	1,933,737	7.1%
Supplies & Materials	7,551,854	7,924,001	10,175,386	-	10,175,386	9,609,078	(566,308)	-5.6%
Equipment	1,912,990	1,484,541	1,764,458	-	1,764,458	1,614,243	(150,215)	-8.5%
Other Objects	135,675	123,334	185,040	-	185,040	199,960	14,920	8.1%
Transfer to Other Funds	200,000	-	672,601	-	672,601	2,739,758	2,067,157	307.3%
Adjustments	-	-	(581,008)	-	(581,008)	-	581,008	-100.0%
<b>Total General Fund Expenditures</b>	<b>226,570,584</b>	<b>233,419,484</b>	<b>242,694,758</b>	<b>4,500,000</b>	<b>247,194,758</b>	<b>263,148,792</b>	<b>15,954,034</b>	<b>6.5%</b>

The FY26-27 budget reflects a \$15.9 million (6.5%) year-over-year increase, 71% of which is driven by salaries and benefits.

# Breakdown of the \$4.5 Million Funding Increase (Used to Reinstate 53.5 Full-Time Equivalent Positions)

Norwalk High School	802,549
Brien McMahon High School	581,751
P TECH Norwalk	189,816
<b>Total High Schools</b>	<b>\$1,574,116</b>
West Rocks Middle School	422,469
Ponus Ridge STEAM Academy	163,284
Roton Middle School	120,975
Nathan Hale Middle School	82,139
<b>Total Middle Schools</b>	<b>\$788,867</b>
<b>Special Education Department</b>	<b>\$245,234</b>

Concord Magnet School	274,970
Wolfpit Integrated Arts School	229,292
Brookside Elementary School	226,919
Silvermine Dual Language Magnet School	208,144
Tracey Magnet School	181,710
Fox Run Elementary School	142,982
Marvin Elementary School	130,378
Naramake Elementary School	126,389
Kendall College and Career Academy	122,137
Rowayton Elementary School	96,798
Cranbury Elementary School	81,233
South Norwalk School	70,831
<b>Total Elementary Schools</b>	<b>\$1,891,783</b>

# Why Did the BOE Include the \$4.5 Million Additional Funding in Its FY25-26 Base?

<u>FY23-24</u>	
<b>Additional Funding Paid from the City Budget</b>	
Curriculum Contracts	287,934
Facilities Contracts	976,702
High School Contracts	463,048
Special Education Contracts	246,455
Technology Contracts	455,000
Transportation Contracts	71,750
	<b>\$2,500,890</b>

*Requested in local funding the following year*

<u>FY24-25</u>	
<b>Additional Funding Paid from the City Budget</b>	
Curriculum Contracts	134,546
Facilities Contracts	666,758
High Schools Contracts	546,732
Special Education Contracts	132,827
Technology Contracts	319,136
	<b>\$1,800,000</b>

*Requested in local funding the following year*

<u>FY25-26</u>	
<b>Additional Funding Appropriated to the BOE Budget by the Council and BET</b>	
High School Staffing	1,574,116
Middle School Staffing	788,867
Elementary School Staffing	1,891,783
SPEd Staffing	245,234
	<b>\$4,500,000</b>

**Included** in the local base budget in this year

# FY26-27: What's Shaping the Budget

## Special Education

An increase in student identification and provider rates is raising overall service needs. Continues the expansion of *in-house* specialized programming.

Expanding *full-day pre-K programs* at Wolfpit and South Norwalk School through the SMART START Grant to meet growing student needs.

## Insurance Costs

The district is now responsible for liability, auto, and property insurance previously paid by the city.

## School Meals

Ongoing funding ensures all students continue to have access to free school meals.

## Staff Pay and Benefits

Budget accounts for negotiated salary increases and rising health insurance costs.

## South Norwalk School Staffing

Supports additional staff and resources as the school adds a 4<sup>th</sup> grade this year.

## Retirement Contributions

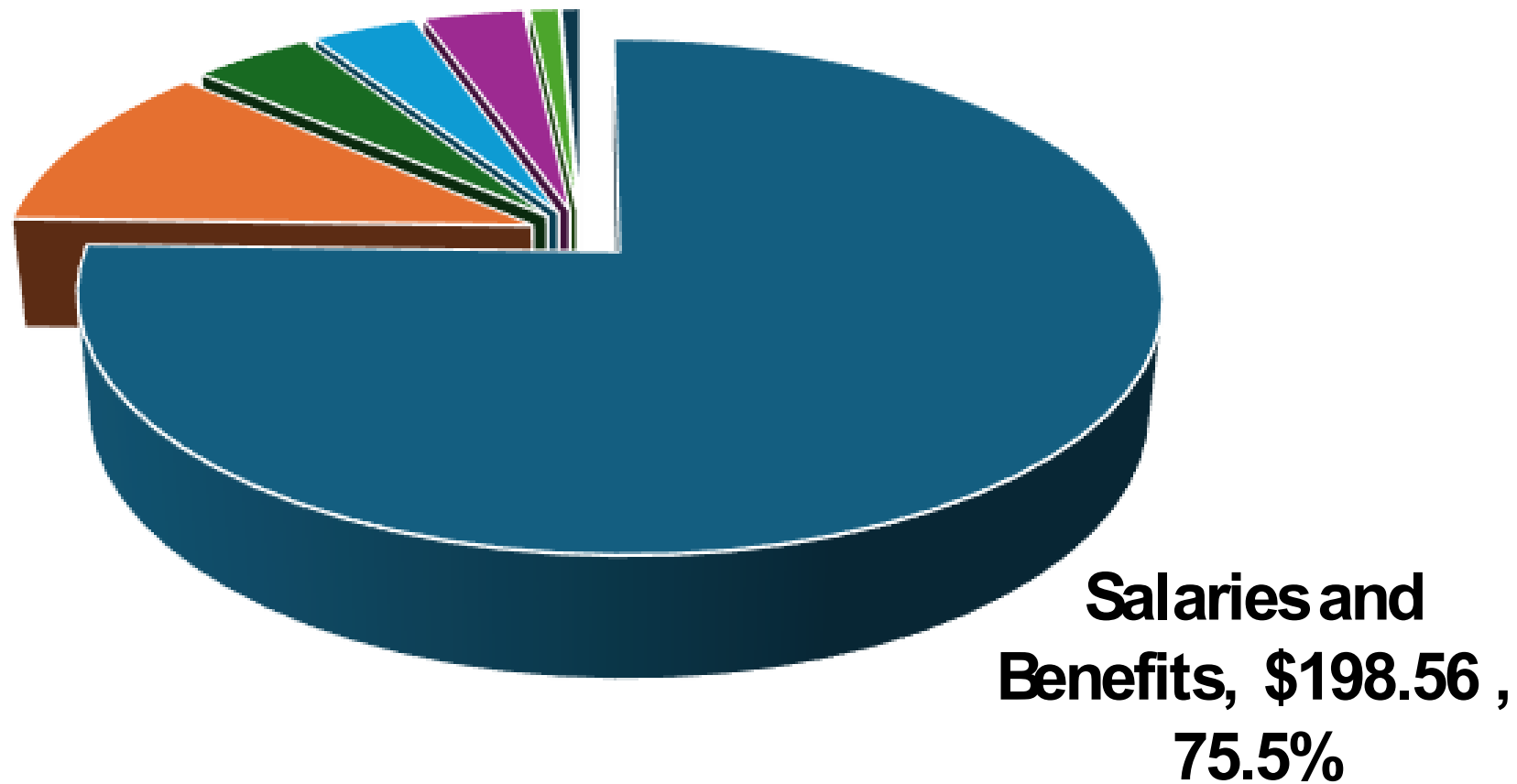
Reflects new employer contribution rates for employees' 401(a) plans.

## Service Contracts

Higher costs across key district vendors and services.

# FY26-27 General Fund: How Funds Are Spent

## BOE General Fund \$263.15 Million



### BOE General Fund (in millions)

Salaries and Benefits	\$198.56	75.5%
Other Student Services	29.29	11.1%
Property Services	11.32	4.3%
Professional and Technical Services	9.90	3.8%
Supplies and Materials	9.53	3.6%
Transfers to Other Funds	2.74	1.0%
Equipment and Other Materials	1.81	0.7%
<b>Total General Fund Expenditures</b>	<b>\$263.15</b>	<b>100.0%</b>

# FY26-27 BOE Budget Book

## I. Introduction

- Superintendent's Budget Message
- Budget Overview & Highlights
- FY26-27 Budget Drivers

## II. Organizational Section

- Connecticut Public School Funding Overview
- Factors Influencing the FY26-27 Budget

## III. Financial Section

- FY26-27 Budget Assumptions
- General Fund Line-Item Budget – Five-Year History
- Grant Funds Line-Item Budget – Five-Year History
- Food Services Line-Item Budget – Five-Year History

## IV. Informational Section

- Norwalk Public Schools Academic Achievements
- Enrollment Projections
- Four-Year Summary of Staffing Changes
- Four-Year Detailed Staffing Changes by Position Title, Location, and Funding Source

Scan to access the NPS  
Budget Website





**NORWALK**  
Public Schools