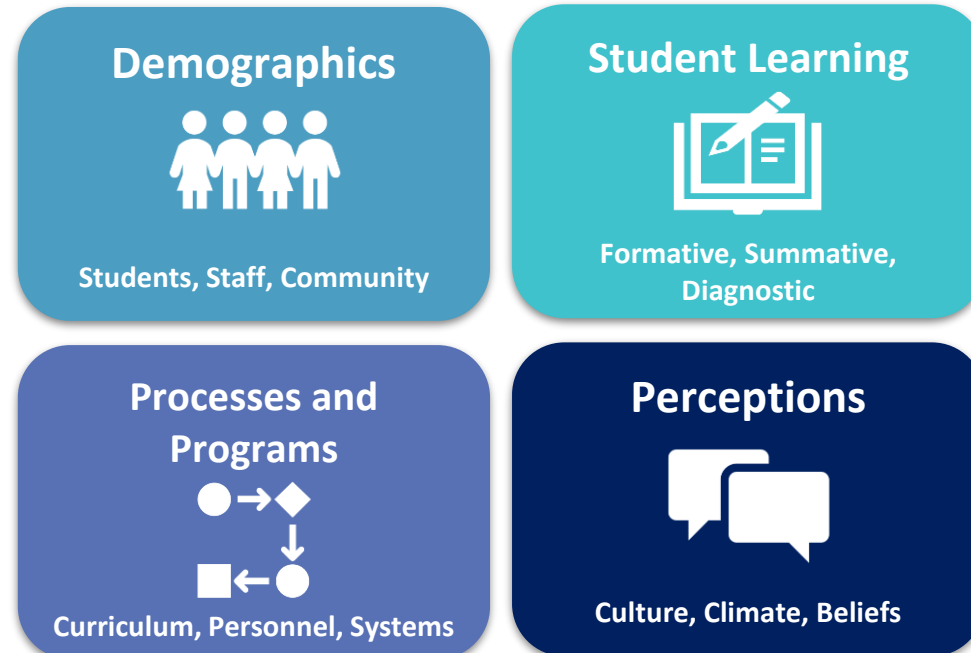


SUPERINTENDENT'S REPORT

- DISTRICT IMPROVEMENT PLAN 2025-26

THE DISTRICT IMPROVEMENT PLAN (DIP)

- **Designed to achieve district goals** with a focus on student outcome goals and constraints
- **Aligns local and federal funds** to the goals and constraints, and using data-based needs of campus staff and students
- Based on a **comprehensive needs assessment** addressing results in four areas:



GOALS, STRATEGIES, AND STRATEGIC INITIATIVES



Student Outcome Goals	Strategic Initiatives	Strategies
<p>Board adopted goals and constraints focused on student achievement and college and career readiness.</p>	<ul style="list-style-type: none"> • College, Career and Workforce Readiness • Early Learning • School Choice • Strategic Compensation • Mental Health Services • High Quality Instructional Materials • District Support Initiative Schools • School Counselor Excellence Initiative 	<ul style="list-style-type: none"> • Tier I Resources • Professional Development • Targeted Instruction • Digital Resources • Targeted Progress Monitoring • Additional Support Structures • Literacy & Math Acceleration Specialist • College Prep Support • Aligned Programs of Study & Gen-Tech degree pathway

STRATEGIC INITIATIVES

College, Career and Workforce

Strong academic preparation, critical thinking & communication real-world experiences

Students confidently navigate their future paths and make informed decisions beyond high school

Early Learning

Early literacy and numeracy skills, teacher training, and a strong start to school

Free full-day Pre K programs for those who qualify, and scholarships for those who need them

School Choice

The most robust offerings of public school choice in the state

Provide the best-fit educational program for each student.

Strategic Compensation

Strategic compensation programs allow the most effective team members to earn higher compensation

Provides support to help all team members reach higher levels of effectiveness.

Mental Health Services

Students, teachers, and staff have access to counseling, crisis intervention, and well-being resources

Students thrive in safe, supportive environments as they manage stress, build resilience, and stay engaged in learning

High Quality Instructional Materials

Instruction is supported through curriculum enhancements, rigorous learning, and academic support

HQIM help close achievement gaps and ensure every student has access to grade-level learning

District Support Initiative Schools

Tailored assistance to strengthen leadership, instruction, and school culture

Ensures every student has access to a high-quality education and the opportunity to thrive

Counselor Excellence

Counselors are grown to the level our students deserve by supporting teachers and leaders

Work directly with students, families, and the community





THANK YOU

Questions?