

The background is a vibrant, abstract composition. On the left, there's a large orange shape with white wavy lines and a white dotted pattern. Below it is a yellow shape with white plus signs. The center and right are dominated by a dark grey/black area with a fine dotted pattern and black wavy lines. On the far right, there are several overlapping blue and green shapes with wavy lines and a fine dotted pattern. A thin white diagonal line runs from the bottom left towards the top right.

Swansboro Elementary 2025-2026 Title I

Annual Meeting Presentation

Introductions

Tiffany Bogenschutz,
Title 1 Instructional Coach

Leah Cottle,
Reading Specialist

What is Reading Enrichment?



Title I is federal funding.



The purpose is to help students meet North Carolina's challenging academic content and performance standards.



Swansboro is a school-wide Title I site. All Swansboro students are "Title I Students."



Swansboro offers a supplemental pull-out reading enrichment program in a small group setting. We use a variety of teaching materials, methods and strategies.

- ▶ MSCL (Multiple Selection Criteria List)
- ▶ Students with highest need are selected first.
- ▶ Kindergarten students will be selected using appropriate criteria for BOY (ELI, Dibels, teacher recommendation).
- ▶ Grades 1-3
 - ▶ Fall 2025 DIBELS assessment and iReady Reading Diagnostic
 - ▶ Report Card Data
 - ▶ 2024-2025 Teacher Input
 - ▶ Home Literacy Survey (Grades K - 3)
 - ▶ Fall 2025 reading observation, if appropriate

How did my
grade K-3 child
qualify for
Reading
Enrichment?

How did my grade 4-5 child qualify for Reading Enrichment?

- ▶ Fall 2025 DIBELS assessment and iReady Reading Diagnostic
- ▶ Report Card Data
- ▶ 2024-2025 Teacher Input
- ▶ EOG Reading Data
- ▶ Fall 2025 reading observation, if appropriate

- ▶ Grades K-5 - Small groups of 4-5 students pulled out with Mrs. Cottle to the Reading Enrichment Classroom.
- ▶ All classes are 30 minutes.
- ▶ Students are not pulled from lunch, recess, or specials classes.

When and where are Reading Enrichment classes?

Class Materials



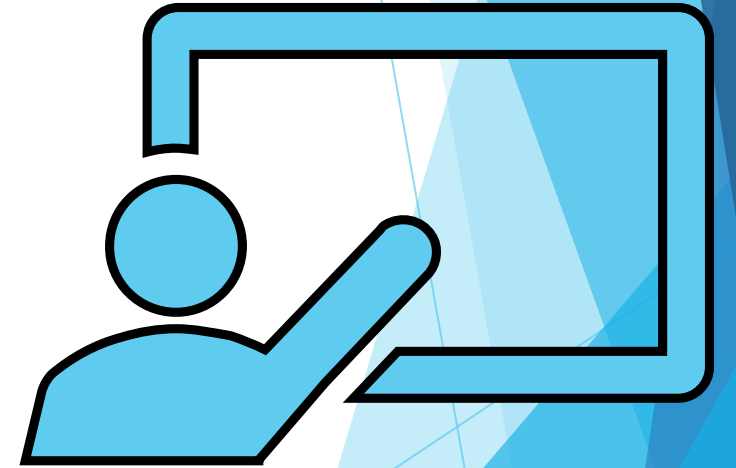
Materials (markers/pencils/ABC Charts/notebooks/magnetic letters) are provided in the Reading Enrichment classroom.



Students will bring home practice work after lessons.

What will my child do during Reading Enrichment?

- ▶ Research-based instruction using LETRS 1 and 2 strategies and UFLI Foundations. Strategies include:
 - ▶ Explicit phonics instruction
 - ▶ Word Study
 - ▶ Reading - Using phonics readers, books, and passages
 - ▶ Writing
 - ▶ Poetry
 - ▶ Multisensory techniques
 - ▶ Take Home Books/reading passages





Key to success!



Students may bring home a reader, decodable passage, or practice materials.



Students receiving Title 1 Reading services will receive a progress report each quarter.



Family events will be offered multiple times during the school year.

Home - School Connection

- ▶ Progress Reports (quarterly) for individual growth.
- ▶ Other (email, phone calls, notes, conferences)

How do I contact my child's Title I coach or teacher?

- ▶ 910-326-1501
- ▶ Tiffany.Bogenschutz@onslow.k12.nc.us
- ▶ Leah.Cottle@onslow.k12.nc.us



- ▶ Title 1 information can be found on the Onslow County School website.
- ▶ Title 1 information can be found on the Swansboro Elementary School website.

Further Information?

Thank you
for coming
out today!

We look forward to
our partnership this year!

