

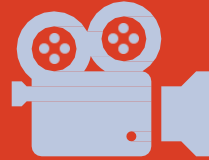
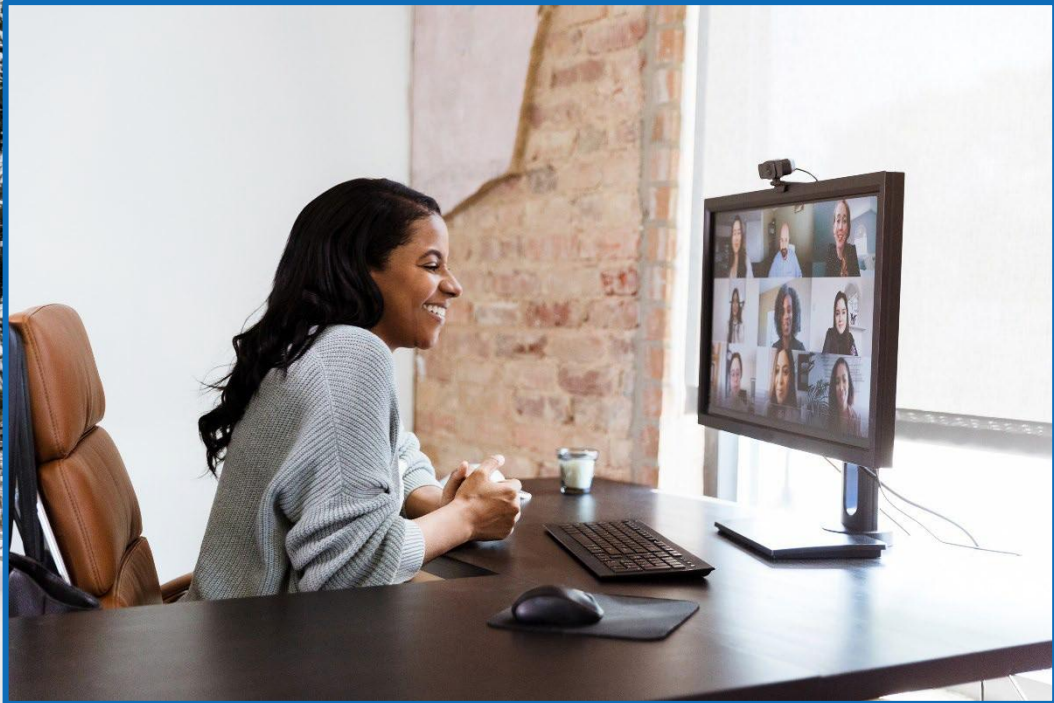


# **District PEIMS COORDINATION NETWORK**

**ESCR19**

January 8, 2026

# BEFORE WE BEGIN



## RECORDING

Will be sent after the webinar has concluded.



## MATERIALS

Download the presentation from the chat.



## QUESTIONS

Please Raise your hand so we can un-mute you

# AGENDA:

## Topics for Today's FCN Webinar

### TIMELY TOPIC

Underreported and Duplicate Enrollment Reports  
PEIMS Attendance Submission

### TSDS DATA SUBMISSIONS

Promotion Logic Documents, PEIMS  
Fall Updates.

### TEXAS EDUCATION DATA STANDARDS

2026-2027 Preliminary Data Standards

### CUSTOMER ENGAGEMENT AND RESOURCES

SPEDS Summer Training, Checkpoints,  
Training Calendar Updates, PEIMS  
Attendance Webinars

### CUSTOMER SUPPORT

TREx Updates, TREx Release Notes, and  
Upcoming TIMS Enhancements



# Timely Topic

- TEA sent out notification on 01/05/2026 that the Underreported and Duplicate Enrollment Reports are now ready to generate and download
- The reports are available in the PEIMS Fall Submission 1 Collection

- This report lists students who attended or were enrolled in grades 7-12 during the prior school year. It assists districts with identifying students for whom a School Leaver record may need to be submitted in the Fall submission.

- The Underreported Enrollment Report is Located within the First Fall Submission collection in the View Reports under the Student Leaver Reports Section

## Student Leaver Reports

Individual LEA reports that use data from across the state to help LEAs identify their leavers. The reports only display accepted data. Availability: In Fall 1st Submission and in the Accepted Submission.

Presumed Record Submission Support ▾

*Hide Reports List*



Report # ↑	Report Name ↓	XLS		PDF		CSV	
		Status	Run	Status	Run	Status	Run
PDM1-321-001	Presumed Underreported Students List						

Selection Parameters, Use the selection parameters to specify data to be retrieved on your report:

- **Campus ID**—One or more campus IDs
- **Display Full or Partial SSN/Alt ID**—Option to display the full or partial ID number
- **Reported Type**—Either select All to include all reported types, or limit the content of the report by selecting one reported type
- **Only Include**—Either Restricted Selections or Non-Restricted Selections. If you choose Restricted Selections, presumed only under-reported data is included. If you choose Non-Restricted Selections, data will be included for summertime movers, presumed returned, presumed leavers, school year movers, prior Texas graduates, Texas GED recipients by Aug 31, and TSDS Unique ID errors.

- View Reports: Selection Parameter, you may leave the default values for Campus ID and Reported Type but you will have to select Non-Restricted Selections or Restricted Selections

## View Reports: Select Parameters

[PEIMS Reports Help](#)

Presumed Underreported Students List PDM1-321-001

Select value(s) for Campus ID \*

071901001
071901002
071901004
071901009
071901039
071901041
071901042
071901044
071901045

Selected value(s) for Campus ID

\* All Campuses

Display Full or Partial SSN/Alt ID \*

Reported Type \*

Attendance Only
Att + Enr
Att + Non-Enr
Att + Enr + Non-Enr
Enrollment Only
Non-Enrollment Only
Enr + Non-Enr
Flex Only
Flex + Att
Flex + Enr

Reported Type

\* All

Only Include

Report Type: PDF

- This report lists all students who have been submitted on an enrollment or graduate record by more than one LEA in the state

- The Duplicate Enrollment Report is Located within the First Fall Submission collection in View Reports under the Statewide Reports Section

## Statewide Reports

Individual LEA reports that use data from across the state to provide data that is relevant for the LEA (for example, the fiscal SSA and duplicate student reports). The reports only display accepted data. Availability: After 1st Submission, Resubmission, and in the Accepted Submission.

*Hide Reports List*



Report # ↑	Report Name ↑	XLS		PDF		CSV	
		Status	Run	Status	Run	Status	Run
PDM1-403-001	Duplicate Student Report for Enrollment and Graduates				↻		↻

### Duplicate Indicator Type Selection Parameters,

- If the Enrollment parameter is selected, this report lists students with an As of Status code of B, D, F, or X who have been submitted on an enrollment record by the LEA generating the report as well as other LEAs in the state. The parameter helps identify students who have left the LEA but have not been removed from the system of the LEA from which they withdrew.
- If the Graduate parameter is selected, the report lists students with an As of Status code of A, D, or E who have been reported as a graduate by the LEA generating the report as well as by other LEAs in the system. The parameter helps identify potential data problems with students who have graduated.

- Duplicate Indicator Type, Enrollment or Graduate
- Display Full or Partial SSN/Alt ID

## View Reports: Select Parameters

Duplicate Student Report for Enrollment and Graduates PDM1-403-001

Select Duplicate Indicator Type \*

Display Full or Partial SSN/Alt ID \*

Report Type: PDF

- New PEIMS Submission:
  - **New** PEIMS Attendance Submission
  - First, Second and Third Six Weeks Attendance Due to TEA January 30, 2026
  - Fourth Six Weeks Due to TEA March 20, 2026
  - Fifth Six Weeks Due to TEA May 8, 2026
  - All attendance data will be collected again during the summer submission

- Privileges have been automatically added for all PEIMS Roles but Completers and Approvers cannot modify to remove them.

**Privileges:**

- Attendance Education Organization
- Attendance Student
- Census Block Group Tool
- Download Validation Tool
- Extended Year Campus Course Section

When Districts do the first PEIMS Attendance submission, are they to do each six weeks 1-3 separately or all at once for that January deadline?

Each PEIMS Attendance Submission Instance (e.g., First Six Weeks, Second Six Weeks, etc.) must be completed and accepted separately. Though an LEA may work on all three instance submissions simultaneously, the LEA cannot complete a future instance without completing the previous instance. LEAs can begin working on the PEIMS Attendance submissions any time after the submission window opens on January 5th. LEAs can complete the 1st Six Weeks, 2nd Six Weeks, and 3rd Six Weeks at any time during January with the due date being January 30, 2026.

Will there will be a Pilot for the PEIMS Attendance submissions?

There is no PEIMS Attendance Submission Pilot.

When will the attendance submissions be available to view in TSDS?

The PEIMS Attendance Submissions will be visible in TSDS on January 5, 2026.

All reporting periods/calendar dates will be promoted within each instance. Business Rule errors could be triggered with any reporting period.

LEAs may use Access Data > Retrieve Submission Data in the PEIMS ATND application or promote calendar data into PEIMS Summer and run reports from the PEIMS Summer reports if needed.

## Attendance Domains

- Education Organization
- Enrollment
- School Calendar

## Categories to promote

- Education Organization
- Student – Basic Attendance, CTE, SPED Student, and Student Basic Information.

For the first year there will not be any Level 2 validations for PEIMS Attendance  
One of the most common errors with attendance can be resolved with checking your level 1.5 filters, because of the connection of UID.

- Check with vendor as to how often your attendance data is being published.
- LEAs should implement Processes to ensure administration and data owners to review attendance data for accuracy before submitting to TEA

- For this year the first three submissions are due at the end of January, this is only for this year.
- The 4th will be due on March 20, and the 5th will be due May 8.
- These dates will be changed for next year.
- There is no 6th because this is reporting during the summer submission.
- There will be no resubmissions.
- If a mistake is made in the first six weeks submission, can I go back in and make corrections?
- No, you cannot go back into the first six weeks' submission and make a correction, but you can reconcile the errors and report the correct data in the summer collection.

# TSDS Data Submissions

# PROMOTION LOGIC DOCUMENTS

- Tentative Release Dates for 2025-2026 Documents:

## **PUBLISHED FOR PEIMS:**

PEIMS Fall  
PEIMS Mid-Year  
PEIMS Attendance

## **PUBLISHED FOR CORE:**

Class Roster Winter  
CSW  
ECDS KG  
ECDS PK  
RF Tracker  
SPEDS Summer  
SPPI-14

## **COMING UP:**


PEIMS Summer-  
December 12<sup>th</sup>

PEIMS Extended  
Year-January 9<sup>th</sup>

# PEIMS FALL: RULES, RULES, RULES

## ■ Two Fixes...

- 30060-0069 – Allows for Teacher Residents to be paid out of PayrollObject 6129



Rule #	Rule Text / Business Meaning	Sev./ Level
30060-0069	<p>On the PEIMS Fall snapshot date, for a particular StaffUniqueld, if PayrollObject is "6129", then at least one of the following must be reported: a StaffEducationOrganizationAssignmentAssociation with StaffClassification of "033", "036", or "088", or a StaffSectionAssociation with ClassroomPosition of "05" or "06", or an AuxiliaryRoleId with StaffEducationOrganizationEmploymentAssociation data.</p> <p>If the staff person has payroll with an object indicating Salaries or Wages for Support Personnel ("6129"), then they must have staff assignment data reported indicating they are a paraprofessional (Educational Aide, Certified Interpreter, PK Classroom Aide), a Teacher Resident (StaffClassification "088" or ClassroomPosition "06"), or an AuxiliaryRoleId.</p>	F L2, L3

✓  
Resolved

- 40110-0201 – Firing when ParentalPermission is NOT "E"

Rule #	Rule Text / Business Meaning	Sev./ Level
40110-0201	<p>If ParentalPermission is "E", then LangInstruProgramSvc must be Alternative Methods for Bilingual Education ("047", "048", "049", "050"), and no other LangInstruProgramSvc may be reported for this student.</p> <p>If ParentalPermission indicates parent or guardian has approved placement of an Emergent Bilingual (EB) student in the Bilingual Program, but the LEA is temporarily implementing alternative language methods (E), then LangInstruProgramSvc must be one of the Alternative Methods for Bilingual Education, and the student must not be reported as participating in the Bilingual or ESL Programs.</p>	F L2, L3

✓  
Resolved



# PEIMS FALL: RULES, RULES, RULES



- ...and a Newbie
  - 41163-0110

Rule #	Rule Text / Business Meaning	Sev./ Level
41163-0110	<p>If StudentSpecialEducationProgramAssociation.Program.ProgramType is "33" (Special Education), and StudentSpecialEducationProgramAssociation.BeginDate is on or before the PEIMS Fall snapshot date, and StudentSpecialEducationProgramAssociation.EndDate is null or after the PEIMS Fall snapshot date (meaning the student is reported as receiving special education services), then a Disability where OrderOfDisability is 1 must be reported with a DisabilitySetBeginDate that is on or before the PEIMS Fall snapshot date, and a DisabilitySetEndDate that is null or after the PEIMS Fall snapshot date.</p> <p>When a student is receiving special education services on the PEIMS Fall snapshot date, then the student must also be reported with a primary disability that is in effect on the PEIMS Fall snapshot date. Please verify the StudentSpecialEducationProgramAssociation BeginDate and EndDate, as well as the Disability.DisabilitySet DisabilitySetBeginDate and DisabilitySetEndDate.</p>	F L2, L3



Ensures that students reported as active in Special Education at snapshot will have a primary disability reported as well.

## Staff Classification '088' impact on reports

\*Please refer to  
the most current  
Known Issues  
[TSDSKB-600](#) to  
obtain more  
details.



Report	Impact*
<b>PDM1-110-001</b> Staff Counts and Totals	Staff '088' <u>ARE</u> included
<b>PDM1-110-004</b> Staff FTE Summary	Staff '088' <u>PARTIALLY</u> included (not in FTE by Role or Avg Salaries)
<b>PDM1-110-005</b> Student and Staff Counts by Service ID	Staff '088' <u>NOT</u> included
<b>PDM1-110-006</b> Staff FTE by Role	Staff '088' <u>NOT</u> included
<b>PDM1-110-007</b> Payroll Information by Special Populations Program Intent Codes PIC 21 thru 43	Staff '088' <u>ARE</u> included (if PIC 21-43)
<b>PDM1-111-001</b> Individual Staff Profiles	Staff '088' <u>ARE</u> included <u>IF</u> additional responsibility or Aux Role
<b>PDM1-111-002</b> Staff Roster	Staff '088' <u>ARE</u> included
<b>PDM1-111-003</b> Class Size by Staff & Service ID	Staff '088' <u>ARE</u> included
<b>PDM1-111-006</b> Physical Education Teacher Roster	Staff '088' <u>ARE</u> included

Data Element ID	Data Element Name	Date Issued	Date Updated
E3130	LEADeterminedTRAEligibility	09/02/2025	
<b>Definition</b>			
<p><b>LEADeterminedTRAEligibility</b> indicates the local education agency (LEA) has determined the teacher (StaffClassification is 087) is employed by a school system and teaches not less than an average of four hours each day, in an academic instructional setting or a career and technology educational setting.</p>			
<b>Special Instructions</b>			
<p>TEA will calculate the FTE for all teachers using the <i>MonthlyMinutes</i> (E1057) reported in the PEIMS Fall Submission. The <i>LEADeterminedTRAEligibility</i> indicator will be compared to the TEA FTE calculation, and the final TRA allotment determination will be made based on what the LEA reports in this data element.</p>			

- Staff who only teach ‘*a class or two*’ that do not teach for the **minimum hours required to qualify** for the **Teacher Retention Allotment (TRA)** must be reported with FALSE for the LEADeterminedTRAEligibility data element.
  - Counselors, Assistant Principals, Instructional Coaches, etc.

# Texas Education Data Standards

- 2026-2027 TEDS Preliminary Data Standards:
  - Published on December 1, 2025
  - Available on the Texas Student Data System website:  
<https://www.texasstudentdatasystem.org/tsds/teds/tweds-upgrade>

Please visit the change logs for detailed information about the changes made in the post-addendum data standards:  
<https://www.texasstudentdatasystem.org/tsds/teds/tweds-upgrade>

- PEIMS Updates:
  - **New** PEIMS Fall Enrollment Submission
  - Collection of Grievance Data in the PEIMS Summer Submission
  - Special Education Data Changes
  - Deleted PriorYearLeaver, PriorYearLeaverParent, and PriorYearLeaverStudentParentAssociation Entities
  
- Core Collection Update:
  - **New** Teacher Vacancy Collection
  - **New** Special Education Data System SPED Video Camera Request Submission

# Customer Support

## All Resources

- TREx 5.8 Change Log
- TREx 5.8 Data Standards
- XML Schema 1.39
- TREx Release Notes: [TSDSKB- 543](#)

# TREX RELEASE NOTES



- TREx Application (November 14, 2025)
  - The TREx Texas Student Record PDF has been updated to include blank values for the 'Middle School Advanced (MSA) Mathematics' or 'IBC Reimbursement' when those values are not provided.
  - DISCIPLINARY-ACTION-CODE (TC06) has been updated to align with TREx version 5.8 that adds code 31 to the table.
  - The TREx XML Schema 1.39 has been updated to align with TREx 5.8 that changes Gender to Sex within the StudentDemographicType.
  - TREx email notifications have been updated to correct an issue where users were not receiving the unprocessed records notifications as they should.

# TREX RELEASE NOTES



- TREx Application (November 19, 2025)
  - The TREx Application has been updated to move PK-CHILD-LEA-CLASSROOM-TEACHER (TE167) from the Academic Status section within the Enrollment/Academic Information tab to the Demographics section within the Student and School Information tab.
  - The TREx XML Schema 1.39 has been updated to align with TREx 5.8 that moves PKChildLEAClassroomTeacher (TE167) from the AcademicStatusType to the StudentDemographicType.

# UPCOMING TIMS ENHANCEMENTS



## ■ PEIMS Collection-Specific Subsystems and Subcategories:

**Create Issue** Configure Fields

All fields marked with an asterisk (\*) are required

Project\* TSDS Knowledge Base (TSDS...

Issue Type\* KB Article

Summary\*

Subsystem\* None None

Component/s None a subcomponent if applicable.

Description\* API

- Alt Student ID Request
- API
- Census Block
- Class Roster
- Core
- CSW
- DMC
- ECDS
- PEIMS-ATND**
- PEIMS-EXYR**
- PEIMS-FALL**
- PEIMS-MDYR**
- PEIMS-SUMR**
- Portal
- RF Tracker

Create another Create Cancel

**Create Issue** Configure Fields

All fields marked with an asterisk (\*) are required

Project\* TSDS Knowledge Base (TSDS...

Issue Type\* KB Article

Summary\*

Subsystem\* PEIMS-FALL None

Component/s None

Description\* Canned response

- None
- Application**
- Policy**
- Reports**
- Rules**

Create another Create Cancel

# UPCOMING TIMS ENHANCEMENTS



## ■ ChildFind to SPEDS – Collection-Specific Subsystems and Subcategories:

**Create Issue** Configure Fields

All fields marked with an asterisk (\*) are required

Project\* TSDS Knowledge Base (TSDS...

Issue Type\* KB Article

Summary\*

Subsystem\* None None

Component/s

Description\* RF Tracker

SPEDS-SPPI-07  
SPEDS-SPPI-11  
SPEDS-SPPI-12  
SPEDS-SPPI-13

Student Discipline Policy  
Support Resources  
TEAL  
TIMS  
Training/Deployment

Create another Create Cancel

**Create Issue** Configure Fields

All fields marked with an asterisk (\*) are required

Project\* TSDS Knowledge Base (TSDS...

Issue Type\* KB Article

Summary\*

Subsystem\* SPEDS-SPPI-07 None

The component the issue relates to; please provide a subcomponent if applicable.

Component/s None

Description\* Canned response

Application  
Reports  
Rules  
Policy

Create another Create Cancel



## 2025-2026 TSDS Submission Timeline by Date (Rev 01/07/2026)

PEIMS Fall Resubmission due date for LEAs to ESCR19	January 8, 2026
Requests to retire Unique IDs due at TEA for PEIMS Fall Resubmission	January 9, 2026
PEIMS Fall Resubmission due date for LEAs to TEA	January 15, 2026
PEIMS Mid-Year First Submission due date for LEAs to ESCR19	January 15, 2026
PEIMS Mid-Year First Submission due date for LEAs to TEA	January 22, 2026
ECDS Kindergarten Submission due date for LEAs to ESCR19	January 22, 2026
ECDS Kindergarten Submission due date for LEAs to TEA	January 29, 2026
<b>1<sup>st</sup> Six Weeks Attendance Due to TEA</b>	<b>January 30, 2026</b>
<b>2<sup>nd</sup> Six Weeks Attendance Due to TEA</b>	<b>January 30, 2026</b>
<b>3<sup>rd</sup> Six Weeks Attendance Due to TEA</b>	<b>January 30, 2026</b>
PEIMS Mid-Year Resubmission due date for LEAs to ESCR19	February 5, 2026
PEIMS Mid-Year Resubmission due date for LEAs to TEA	February 12, 2026
ECDS Kindergarten data available to customers	February 12, 2026
PEIMS Fall data available to customers	February 12, 2026
SPPI-14 Submission due date for LEAs to ESCR19	February 12, 2026
SPPI-14 Submission due date for LEAs to TEA	February 19, 2026
<u>Class Roster Winter</u> ready for users to complete	February 27, 2026
Class Roster Winter snapshot date – Last Friday in February	February 27, 2026

- ESC Region 19 Will be closed January 19, 2026