

OXNARD SCHOOL DISTRICT

1051 South "A" Street • Oxnard, California 93030 • (805) 385-1501



BOARD OF TRUSTEES

Veronica Robles-Solis, President
Brian Melanephy, Clerk
Monica Madrigal Lopez, Member
Rose Gonzales, Member
Cynthia Salas, Member

ADMINISTRATION

Anabolena DeGenna, Ed.D.
Superintendent
Kristen Pifko
Assistant Superintendent,
Business & Fiscal Services
Aracely Fox, Ed.D.
Assistant Superintendent,
Educational Services
Scott Carroll, Ed.D.
Assistant Superintendent,
Human Resources

AGENDA SPECIAL BOARD MEETING Monday, January 5, 2026

1:00 PM - Open Meeting

Oxnard School District, 1051 South A Street, Oxnard CA - Board Room

Trustee Brian Melanephy attending virtually from 6500 Linda Avenue, Mountain Mesa, CA 93240

***NOTE:** In accordance with requirements of the Americans with Disabilities Act and related federal regulations, individuals who require special accommodation, including but not limited to an American Sign Language interpreter, accessible seating or documentation in accessible formats, should contact the Superintendent's office at least two days before the meeting date.

Persons wishing to address the Board of Trustees on any agenda item may do so by completing a Speaker Request Form and submitting the form to the Assistant Superintendent of Educational Services. The speaker should indicate on the card whether they wish to speak during Public Comment or when a specific agenda item is considered.

Note: No new items will be considered after 10:00 p.m. in accordance with Board Bylaws, BB 9323 – Meeting Conduct

Section A: PRELIMINARY

A.1. Call to Order and Roll Call (5:00 PM)

The President of the Board will call the meeting to order. A roll call of the Board will be conducted.

ROLL CALL VOTE:

Salas ____, Gonzales ____, Madrigal Lopez ____, Melanephy ____, Robles-Solis ____

A.2. Pledge of Allegiance to the Flag

Dr. Ana DeGenna, Superintendent, will lead the audience in the Pledge of Allegiance.

A.3. Adoption of Agenda (Superintendent)

Moved:

Seconded:

Vote:

ROLL CALL VOTE:

Salas ____, Gonzales ____, Madrigal Lopez ____, Melanephy ____, Robles-Solis ____

A.4. Public Comment (3 minutes per speaker) / Comentarios del Público (3 minutos por cada ponente)

Members of the public may address the Board on any matter within the Board's jurisdiction at this time or at the time that a specific agenda item is being considered. Comments should be limited to three (3) minutes. Please know this meeting is being video-recorded and televised.

The Board particularly invites comments from parents of students in the District. If you would like to donate your (3) minutes of public speaking time, you must be present during public comments. Board members cannot respond to Public Comment.

Los miembros del público podrán dirigirse a la Mesa Directiva sobre cualquier asunto que corresponda a la jurisdicción de la Mesa Directiva en este periodo o cuando este punto figure en el orden del día y sea analizado. Los comentarios deben limitarse a tres (3) minutos. Tenga presente que esta reunión está siendo grabada y televisada. La Mesa Directiva invita en particular a los padres y alumnos del distrito a que presenten sus comentarios. Si gusta donar sus tres (3) minutos de comentario, debe estar presente durante la presentación de comentarios. Los miembros de la Mesa Directiva no pueden responder a los comentarios.

A.5. Enhanced Master Construct Special Board Meeting Presentation (DeGenna/CFW)

A presentation will be provided to update the Board on the adopted Enhanced Master Construct Program along with considerations regarding enrollment and capacity, proposed projects, projected funding sources, and proposed uses.

Section G: CONCLUSION

G.1. ADJOURNMENT

Moved:

Seconded:

Note: No new items will be considered after 10:00 p.m. in accordance with Board Bylaws, BB 9323 – Meeting Conduct

Vote:

ROLL CALL VOTE:

Salas ____, Gonzales ____, Madrigal Lopez ____, Melanephy ____, Robles-Solis ____

Anabolena DeGenna, Ed. D.

District Superintendent and Secretary to the Board of Trustees

This notice is posted in conformance with the provisions of Chapter 9 of the Government Code, in the front of the Educational Services Center; 1051 South A Street, Oxnard, California by 1:00 p.m. on Friday, January 2, 2026.

Note: No new items will be considered after 10:00 p.m. in accordance with Board Bylaws, BB 9323 – Meeting Conduct

January 5, 2026

OSD BOARD AGENDA ITEM

Name of Contributor: Dr. Anabolena DeGenna

Date of Meeting: January 05, 2026

Agenda Section: Section A: Preliminary

Public Comment (3 minutes per speaker)/Comentarios del Público (3 minutos por cada ponente)

Members of the public may address the Board on any matter within the Board's jurisdiction at this time or at the time that a specific agenda item is being considered. Comments should be limited to three (3) minutes. Please know this meeting is being video-recorded and televised. The Board particularly invites comments from parents of students in the District. If you would like to donate your (3) minutes of public speaking time, you must be present during public comments.

Los miembros del público podrán dirigirse a la Mesa Directiva sobre cualquier asunto que corresponda a la jurisdicción de la Mesa Directiva en este periodo o cuando este punto figure en el orden del día y sea analizado. Los comentarios deben limitarse a tres (3) minutos. Tenga presente que esta reunión está siendo grabada y televisada. La Mesa Directiva invita en particular a los padres y alumnos del distrito a que presenten sus comentarios. Si gusta donar sus tres (3) minutos de comentario, debe estar presente durante la presentación de comentarios.

FISCAL IMPACT:

N/A

RECOMMENDATION:

N/A

OSD BOARD AGENDA ITEM

Name of Contributor: Dr. Anabolena DeGenna

Date of Meeting: January 05, 2026

Agenda Section: Section A: Preliminary

Enhanced Master Construct Special Board Meeting Presentation (DeGenna/CFW)

A presentation will be provided to update the Board on the adopted Enhanced Master Construct Program along with considerations regarding enrollment and capacity, proposed projects, projected funding sources, and proposed uses.

FISCAL IMPACT:

N/A

RECOMMENDATION:

None - information only.

ADDITIONAL MATERIALS:

Attached: [Presentation - Enhanced Master Construct Update \(19 pages\)](#)



OXNARD SCHOOL DISTRICT

Ventura County

Enhanced Master Construct Program Update

*Board of Trustees Presentation
January 5, 2026*

2163 HARBOR BAY PARKWAY
ALAMEDA, CA 94502
(510) 596-8170

521 NORTH 1st AVENUE
ARCADIA, CA 91006
(626) 829-8300

1901 S. VICTORIA AVENUE SUITE 106
OXNARD, CA 93035
(805) 201-1989

CFW
— INC.

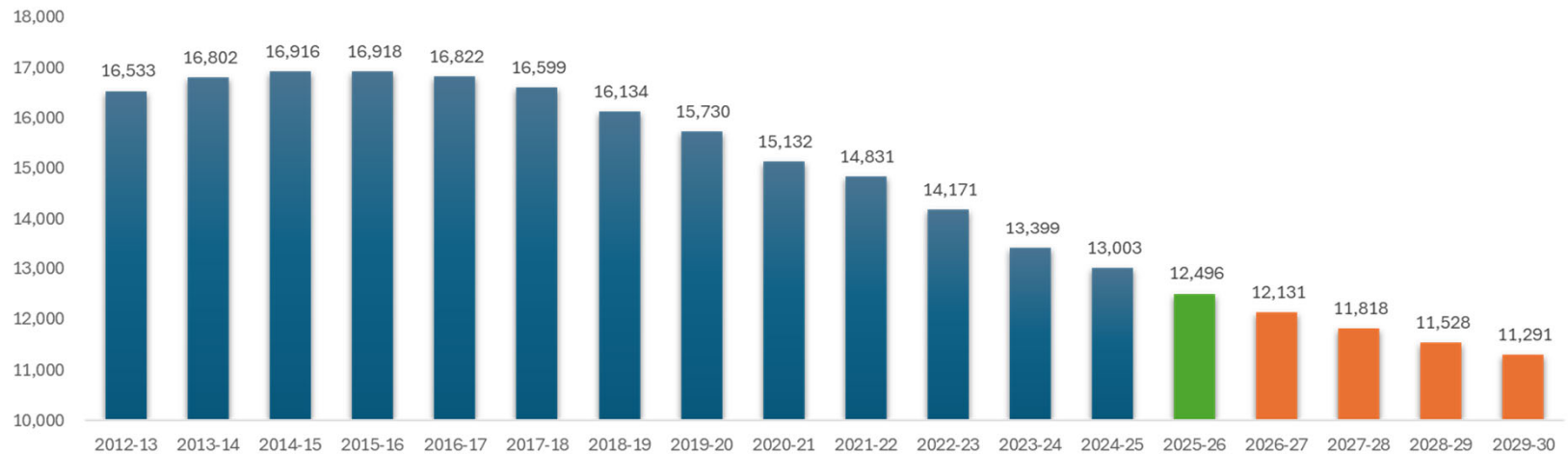
Enhanced Master Construct Program

- In August 2025, the Board received a summary overview of the District's Enhanced Master Construct Program including a review of projects completed, sources of funding undertaken, adopted specifications, and remaining projects specified in the plan
- This presentation takes a more focused look at the current strategy, the impact of remaining resources and identified projects, potential constraints, and remaining phasing
- The District's strategy has been to identify and leverage available resources at any given time and apply those resources to maximize the benefit to eligible projects in need of improvement
- Based on the 2013 enrollment, the District qualified for substantial amounts of State new construction grants (\$71.4 M) and lesser amounts of modernization grants (\$29.7 M), collectively requiring a 50 to 40 percent local match from limited District bonding capacity and available developer fees
- The initial priority was to reconstruct schools that could fully maximize the larger amount of new construction grant eligibility by leveraging the local match requirement of available bond and developer fee proceeds leading to the reconstruction of some of the oldest schools Harrington, Lemonwood, Elm & McKinna and the 6-8 addition to Marshall
- Unfortunately, by the time the planning of the new construction of Fremont and Lopez was initiated and Rose completed, the substantial drop in enrollment had eliminated the District's new construction eligibility for new schools, thus requiring the full use of local funds for construction
- Consequently, the priority of projects widened to seek DSA approval and OPSC submittal for schools with remaining eligibility for matching modernization grants based on remaining local funds available (e.g. McAuliffe and Ritchen)
- In the interim, enrollment and State grant eligibility continues to drop, construction and interest rates have increased, and developer fee rates have substantially been reduced

Enrollment

- As reported by the State, the District’s current enrollment is 12,496
- There has been a 26% decrease in the District’s overall enrollment since its peak in FY 2016 equaling a decrease of 4,422 students
- Current District projections indicate that it is likely that enrollment will continue to decline over the next 5 years to 11,291 students by FY 2030; a 33% decrease since its peak in FY 2016 equal to a decrease of 5,627 students
- This trend will continue to impact the demand for required facilities and the amount of State aid eligibility available to assist in the construction, upgrade and modernization of remaining schools

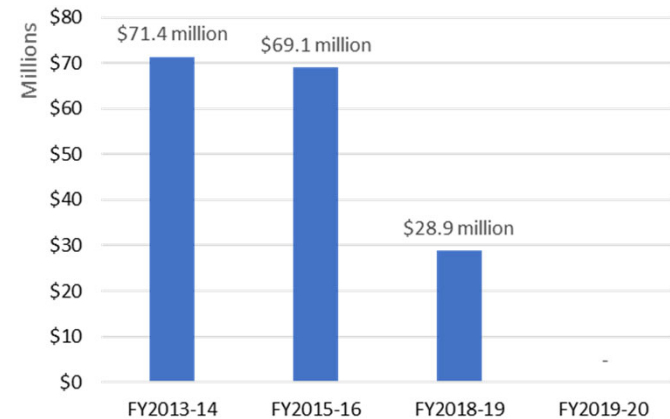
District Enrollment Fiscal Years 2012-13 to 2029-30



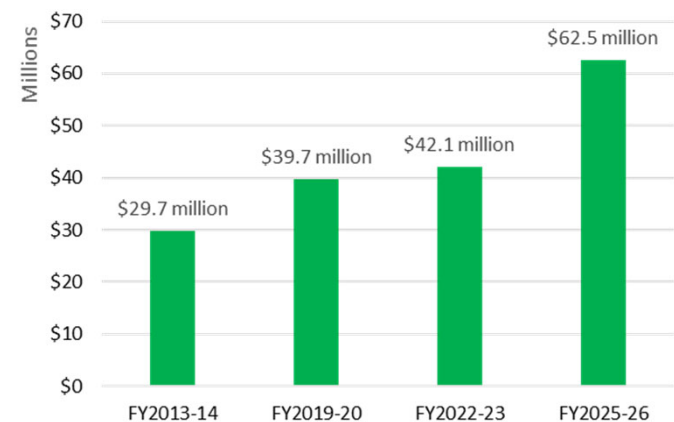
District State Aid Eligibility

- Based on a district’s existing permanent classroom capacity to house existing and projected enrollment, it may qualify for new construction pupil grants to build new school facilities; a 50 percent local match is required
- In FY 2014 the District was estimated to be eligible for \$71.4 million in new construction grants, but rapidly declining enrollment reduced that amount to zero by the end of FY 2020
- Modernization eligibility is based on the total amount of students that can be housed in permanent classrooms that exceed 25 years or portables that exceed 20 years
- Since FY 2014, modernization eligibility has continued to increase overall as remaining schools get older, but is offset by the declining amount of enrollment available at certain schools
- The design and approval of plans by DSA is required in order to submit applications for funding
- Once submitted, the enrollment for that site’s modernization eligibility is frozen with no further penalty should enrollment continue to decrease at that site
- To preserve modernization eligibility, there is a strong incentive for the District to submit applications as quickly as possible at eligible sites – 2 applications are pending funding

District SFP New Construction Eligibility



District SFP Modernization Eligibility



District Bonding Capacity

- The District has maximized its bonding capacity of 1.25 percent of total AV to meet its facilities needs
- Under State law, the District is permitted to have an outstanding bond capacity equal to 1.25 percent of its total assessed valuation without any additional waiver from the State Board of Education
- Based on the receipt of a State waiver in 2023, the District’s current bonding capacity is 2.14 percent allowing the District to have up to \$386.8 million in outstanding bonds – to date \$313 million has been issued
- Under Prop. 39, however, the maximum tax rate per authorization cannot exceed \$30/\$100,000 of AV, further limiting the bonds that may ultimately be issued at any time
- Any additional amount of bonds to be sold will require an additional waiver from the State Board of Education and must not exceed the \$30 cap for each authorization

BONDING CAPACITY ANALYSIS (Without Waiver)

Fiscal Year 2025-26	
<u>DEBT LIMITATION</u>	
Total Assessed Valuation	\$18,076,475,926
Applicable Bond Debt Limit	1.25%
Overall Bonding Capacity	\$225,955,949
Outstanding Bonded Indebtedness	\$313,259,402
NET BONDING CAPACITY	-\$87,303,453

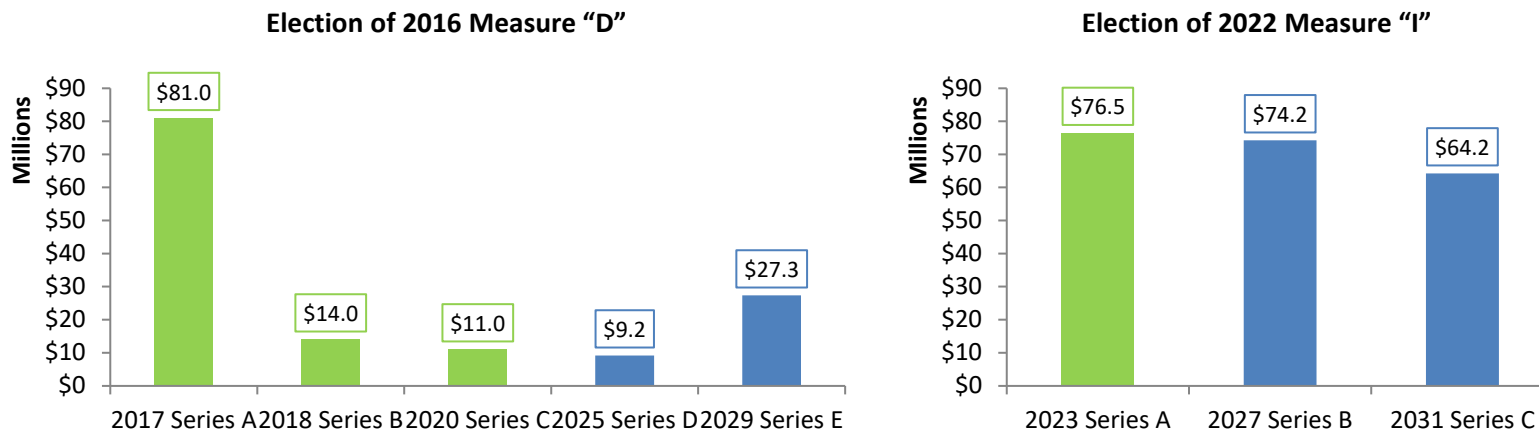
BONDING CAPACITY ANALYSIS (With Waiver)

Fiscal Year 2025-26	
<u>DEBT LIMITATION</u>	
Total Assessed Valuation	\$18,076,475,926
Applicable Bond Debt Limit	2.14%
Overall Bonding Capacity	\$386,836,585
Outstanding Bonded Indebtedness	\$313,259,402
NET BONDING CAPACITY	\$73,577,183



Anticipated Future G.O. Bond Issuances

- The chart below indicates the amount of bonds sold to date by each measure (indicated in green) and the remaining amount estimated to be sold in the future (indicated in blue)
- The District’s remaining authorization from Measure “D” can be accelerated at this time through the use of a bond anticipation note (BAN) to support the construction of Fremont and replenish the Program Reserve
- The next series of bonds from Measure “I” is being reserved for projected issuance in 2027 to fund the reconstruction of Dr. Lopez Academy
- Based on AV growth and future market conditions an additional waiver may be required

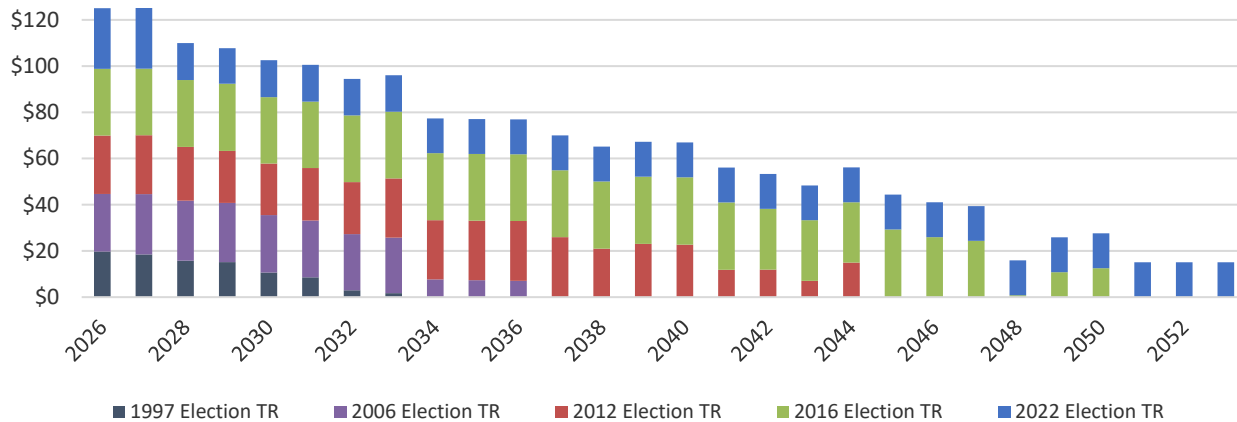


Note: Future issuances from either election authorization will depend upon tax rate constraints, interest rate market conditions, bonding capacity, and project needs at the time of issuance

All figures are preliminary, and subject to change

Estimated G.O. Bond Tax Rates

- The chart below indicates the estimated future tax rates for all currently outstanding bonds
- The tax rate to repay the required combined debt service was \$118 per \$100,000 of AV in FY 2024-25
- Tax rates on outstanding bonds are anticipated to decline over time as bonds mature and as the District’s tax base continues to grow
- Additional bonds sold from the remaining 2016 and 2022 authorizations are anticipated to maintain and not increase the current tax rate over time without further decline or increase from the current rate



Note: Tax rates shown as dollars per \$100,000 of AV and future estimated tax rate amounts assume a 4% annual increase in AV in FY2025-26 and forward

Developer Fees

- Pursuant to State law, school districts are allowed to collect a per square foot fee against new construction projects to help offset the impact that new residential or commercial development has on local public schools—primarily the need for additional classroom space
- To collect such fees, school districts are required to conduct a developer fee justification study every two years to establish the appropriate fee amount
- As per the chart, the District was collecting \$4.08 per square foot of new residential development in 2019
- This amount has continued to decrease annually, but for 2022 when a substantial one-time increase was approved by the SAB
- Since then, the District’s developer fee rate has continued to decrease, reducing the amount available to fund remaining project improvements
- The current fee of \$2.75 per square is projected to provide over \$ 12.4 million the next 8 years
- For purposes of budgeting, developer fees are best budgeted as available once collected and not when projected as their amounts continue to fluctuate substantially

District Annual Developer Fee Rates



Projected Source & Use of Available & Projected Funds

Estimated Available Funds

- Estimated Construction Fund Balance : \$46.5 million
- Projected BAN Proceeds: \$36.1million
- Estimated Subtotal: \$82.6 million

Estimated Uses of Available Funds

- Fremont GMP: \$64.5 million
- Replenishment of Reserve Funds: \$18.1 million
- Estimated Subtotal \$82.6 million

Projected Additional Bond Sale Proceeds

- Measure “I”, Series B 2027 \$74.2 million
- Measure “D”, Series D 2030 \$36.5 million
- Estimated Subtotal \$110.7 million

Projected Uses of Additional Bond Proceeds

- Estimated Lopez GMP \$65.0 million
- Projected Repayment of BAN \$42.5 million
- Projected Additional Reserve Fund Proceeds \$ 3.2 million
- Estimated Subtotal \$110.7 million

These amounts do not include projected developer fee collections or State aid reimbursement receipts

Those amounts are best budgeted once collected as they tend to fluctuate

Projected Remaining Sources and Uses

- There is approximately \$125 million in a combination of remaining bond authorization, projected State grant reimbursements, and developer fees to fund remaining identified improvements
- There remains approximately \$118 million in adopted project improvements to be implemented pursuant to the Master Construct Program with an additional \$6.8 million available to fund a Program Reserve
- The sequencing of these improvements is based on the amount and availability of funding
- The remaining projects include the largest enrolled middle school and the K-8 facilities with the oldest support facilities

Estimated Remaining Sources & Uses

Remaining Estimated Sources	Estimated Amount
Measure "I" Series C	\$64,200,000
Est. State Modernization Reimbursements	\$48,364,131
Projected Add. Developer Fee Collections	\$12,385,021
Total	\$124,949,152

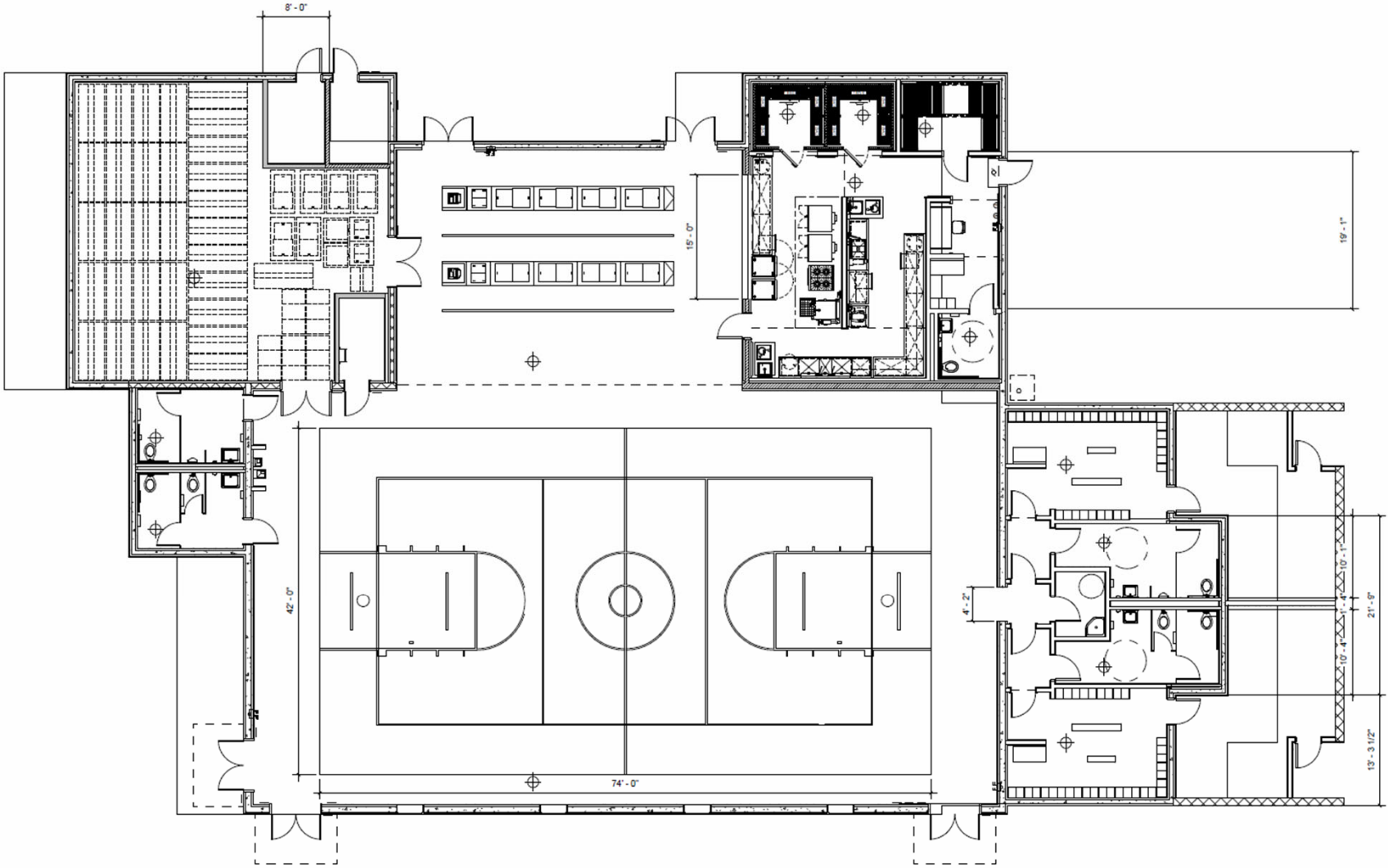
Remaining Projects	Estimated Cost
Frank 6-8	\$15,290,123
Brekke K-5	\$8,000,033
Ramona K-5	\$7,354,070
Driffill K-8	\$13,005,183
Chavez K-8	\$14,696,311
Kamala K-8	\$19,708,843
Curren K-8	\$26,442,963
Marshall K-8	\$5,376,218
Soria K-8	\$3,904,945
ECDC at Rose Avenue	\$4,349,290
Available Reserve Fund	\$6,821,172
Total	\$124,949,152

Increased Specifications

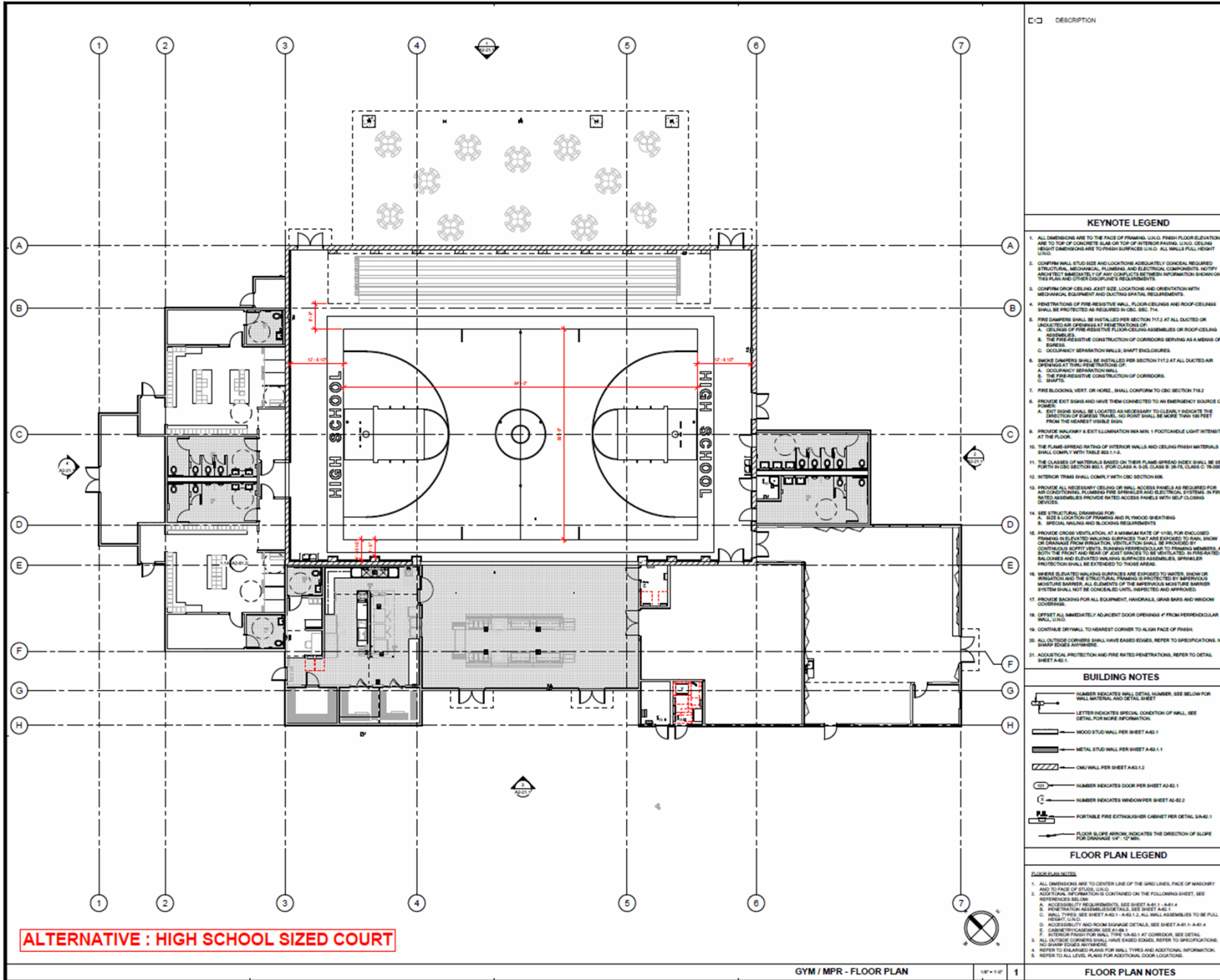
- State, local and District specifications continue to increase
- Since the approval of Rose, DSA now requires:
 - Installation of a solar energy and battery storage systems
 - EV charging stations
 - Additional tree shading
- City requires:
 - New 5-foot perimeter sidewalks
 - A central drainage plan linked to a dedicated retention basin with storage and installed pumping system
 - Additional specific connection points for drainage and storm water
- Additional District Middle School requirements include:
 - 3,000 square feet of support spaces, including RSP, intervention, and deescalation rooms
 - Increased locker room space
 - Maintaining existing parking spaces
- Additional locker room space at Marshall and Lemonwood is now required

Additional Specifications for Consideration

- Lemonwood Gym:
 - Middle School Gym
 - Approximately 4050 Square feet
 - Basketball Court 74.5 feet by 42.5 feet
 - No bleachers/existing and additional lockers
- Fremont Gym/Lopez Gym
 - Middle School Gym
 - Approximately 8050 Square feet
 - Basketball Court 74.5 feet by 42.5 feet
 - Bleachers/350 planned lockers
 - Potential Issues:
 - Periodic tournament play
 - More lockers and dressing area requested



LEMONWOOD
MIDDLE SCHOOL
COURT



ALTERNATIVE : HIGH SCHOOL SIZED COURT

GYM / MPR - FLOOR PLAN

1/8" = 1'-0" 1

DESCRIPTION

- KEYNOTE LEGEND**
1. ALL DIMENSIONS ARE TO THE FACE OF FRAMING UNLESS OTHERWISE NOTED. FINISH FLOOR ELEVATIONS ARE TO TOP OF CONCRETE SLAB OR TOP OF INTERIOR FINISH UNLESS OTHERWISE NOTED. CEILING HEIGHT DIMENSIONS ARE TO FINISH SURFACE UNLESS OTHERWISE NOTED. ALL WALLS FULL HEIGHT UNLESS OTHERWISE NOTED.
 2. CONFIRM WALL STUD SIZE AND LOCATION ADEQUATELY CONCEAL REQUIRED STRUCTURAL, MECHANICAL, PLUMBING, AND ELECTRICAL COMPONENTS. NOTIFY ARCHITECT IMMEDIATELY OF ANY CONFLICTS BETWEEN INFORMATION SHOWN ON THIS PLAN AND OTHER DISCIPLINE'S REQUIREMENTS.
 3. CONFIRM DROP CEILING LIGHT SIZE, LOCATION, AND ORIENTATION WITH MECHANICAL EQUIPMENT AND DUCTING SPATIAL REQUIREMENTS.
 4. PENETRATIONS OF FIRE RESISTIVE WALL, FLOOR-CEILING AND ROOF-CEILING SHALL BE PROTECTED AS REQUIRED IN CBC SEC. 714.
 5. CONFIRM DROP CEILING LIGHT SIZE, LOCATION, AND ORIENTATION WITH MECHANICAL EQUIPMENT AND DUCTING SPATIAL REQUIREMENTS.
 6. FIRE DAMPERS SHALL BE INSTALLED PER SECTION 717.2 AT ALL DUCTED OR UNDUCTED AIR OPENINGS AT THE PENETRATIONS OF:
 - A. CEILING OF FIRE RESISTIVE FLOOR-CEILING ASSEMBLIES OR ROOF-CEILING ASSEMBLIES.
 - B. THE FIRE RESISTIVE CONSTRUCTION OF CORRIDORS SERVING AS A MEANS OF EGRESS.
 - C. OCCUPANCY SEPARATION WALLS, SHWY ENCLOSURES.
 7. FIRE DAMPERS SHALL BE INSTALLED PER SECTION 717.2 AT ALL DUCTED AIR OPENINGS AT THE PENETRATIONS OF:
 - A. OCCUPANCY SEPARATION WALLS.
 - B. THE FIRE RESISTIVE CONSTRUCTION OF CORRIDORS.
 - C. SHWY.
 8. FIRE BLOCKING, VERT. OR HORIZ., SHALL CONFORM TO CBC SECTION 718.2.
 9. PROVIDE EXIT SIGNS AND HAVE THEM CONNECTED TO AN EMERGENCY SOURCE OF POWER.
 10. EXIT SIGNS SHALL BE LOCATED AS NECESSARY TO LEAVE "Y" INDICATES THE DIRECTION OF EGRESS TRAVEL. NO POINT SHALL BE MORE THAN 100 FEET FROM THE NEAREST VISIBLE SIGN.
 11. PROVIDE MINIMUM 1 FOOT ILLUMINATION WITHIN 1 FOOT CANDLE LIGHT INTENSITY AT THE FLOOR.
 12. THE FLAME SPREAD RATING OF INTERIOR WALLS AND CEILING FINISH MATERIALS SHALL COMPLY WITH TABLE 803.1.4.1.
 13. THE CLASSES OF MATERIALS BASED ON THEIR FLAME SPREAD INDEX SHALL BE SET FORTH IN CBC SECTION 803.1.4.1. FOR CLASS A USE CLASS B, 20%; CLASS C, 10%.
 14. INTERIOR TRIMS SHALL COMPLY WITH CBC SECTION 806.
 15. PROVIDE ALL NECESSARY CEILING OR WALL ACCESS PANELS AS REQUIRED FOR AIR CONDITIONING, HEATING, VENTILATION AND AIR TREATMENT. EXTERIOR FIRE RATED ASSEMBLIES PROVIDE RATED ACCESS PANELS WITH SELF-CLOSING DEVICES.
 16. SEE STRUCTURAL DRAWINGS FOR:
 - A. SIZE & LOCATION OF FRAMING AND ALL WOOD SHEATHING.
 - B. SPECIAL WALLS AND BLOCKING REQUIREMENTS.
 17. PROVIDE CROSS VENTILATION AT A MINIMUM RATE OF 1/160 FOR ENCLOSED FRAMING IN EXTERIOR WALLS. EXTERIOR WALLS THAT ARE EXPOSED TO RAIN, SNOW OR DRAMA FROM IRADIATION VENTILATION SHALL BE PROVIDED BY CONTINUOUS SLOTTED VENTS, FINISHING PERPENDICULAR TO FRAMING MEMBERS, AT BOTH THE FRONT AND REAR OF JOINT GABLES TO BE VENTILATED IN PRE-FABRICATED BALCONIES AND RELATED WALLING SURFACE ASSEMBLIES. SPRINKLER PROTECTION SHALL BE EXTENDED TO THESE AREAS.
 18. WHERE EXTERIOR FINISH SURFACES ARE EXPOSED TO WATER, SNOW OR IRADIATION AND THE STRUCTURAL FRAMING IS PROTECTED BY IMPERVIOUS MOISTURE BARRIERS, ALL ELEMENTS OF THE IMPERVIOUS MOISTURE BARRIER SYSTEM SHALL NOT BE CONDENSED UNTIL INSPECTED AND APPROVED.
 19. PROVIDE BACKING FOR ALL EQUIPMENT, HANDRAILS, GRAB BARS AND WOOD COORING.
 20. OFFSET ALL IMMEDIATELY ADJACENT DOOR OPENINGS FROM PERPENDICULAR WALL UNLESS OTHERWISE NOTED.
 21. CONTINUE DRYWALL TO NEAREST CORNER TO ALIGN FACE OF FINISH.
 22. ALL OUTSIDE CORNERS SHALL HAVE EASED EDGES. REFER TO SPECIFICATIONS. NO SHARP EDGES ANYWHERE.
 23. ADDITIONAL PROTECTION AND FIRE RATED PENETRATIONS, REFER TO DETAIL SHEET A4-1.

- BUILDING NOTES**
- 1. NUMBER INDICATES WALL DETAIL NUMBER. SEE BELOW FOR WALL MATERIAL AND DETAIL SHEET.
 - 2. LETTER INDICATES SPECIAL CONDITION OF WALL. SEE DETAIL FOR MORE INFORMATION.
 - 3. WOOD STUD WALL PER SHEET A-43.1
 - 4. METAL STUD WALL PER SHEET A-43.1.1
 - 5. CMU WALL PER SHEET A-43.1.2
 - 6. NUMBER INDICATES DOOR PER SHEET A-43.1
 - 7. NUMBER INDICATES WINDOW PER SHEET A-43.2
 - 8. PORTABLE FIRE EXTINGUISHER CABINET PER DETAIL 34-43.1
 - 9. FLOOR SLOPE ARROW INDICATES THE DIRECTION OF SLOPE FOR DRAINAGE 1/4" = 12" MIN.

- FLOOR PLAN LEGEND**
- GRADE PLAN NOTES**
1. ALL DIMENSIONS ARE TO CENTER LINE OF THE GRID LINES. FACE OF MASONRY ADD TO FACE OF STUDS UNLESS OTHERWISE NOTED.
 2. ADDITIONAL INFORMATION IS CONTAINED ON THE FOLLOWING SHEET. SEE REFERENCES BELOW.
 3. ADDITIONAL REQUIREMENTS: SEE SHEET A-61.1-A-61.4
 4. PENETRATION ASSEMBLY/DETAILS. SEE SHEET A-42.1
 5. WALL TYPES: SEE SHEET A-43.1-A-43.1.2. ALL WALL ASSEMBLIES TO BE FULL HEIGHT UNLESS OTHERWISE NOTED.
 6. ACCESSIBILITY AND ROOM SIGNAGE DETAILS. SEE SHEET A-61.1-A-61.4
 7. CABINETRY/CASEWORK. SEE DETAIL A-43.1
 8. ALL DOOR FINISH FOR WALL TYPE DETAILS AT CORRIDOR. SEE DETAIL A-43.1
 9. ALL DOOR FINISH FOR WALL TYPE DETAILS. REFER TO SPECIFICATIONS. NO SHARP EDGES ANYWHERE.
 10. REFER TO ENLARGED PLANS FOR WALL TYPES AND ADDITIONAL INFORMATION.
 11. REFER TO ALL LEVEL PLANS FOR ADDITIONAL DOOR LOCATIONS.

FLOOR PLAN NOTES

OWNER: OXNARD SCHOOL DISTRICT
 PROJECT NAME: FREMONT MIDDLE SCHOOL
 CLIENT ADDRESS: 1031 North H Street, Oxnard, CA 93030

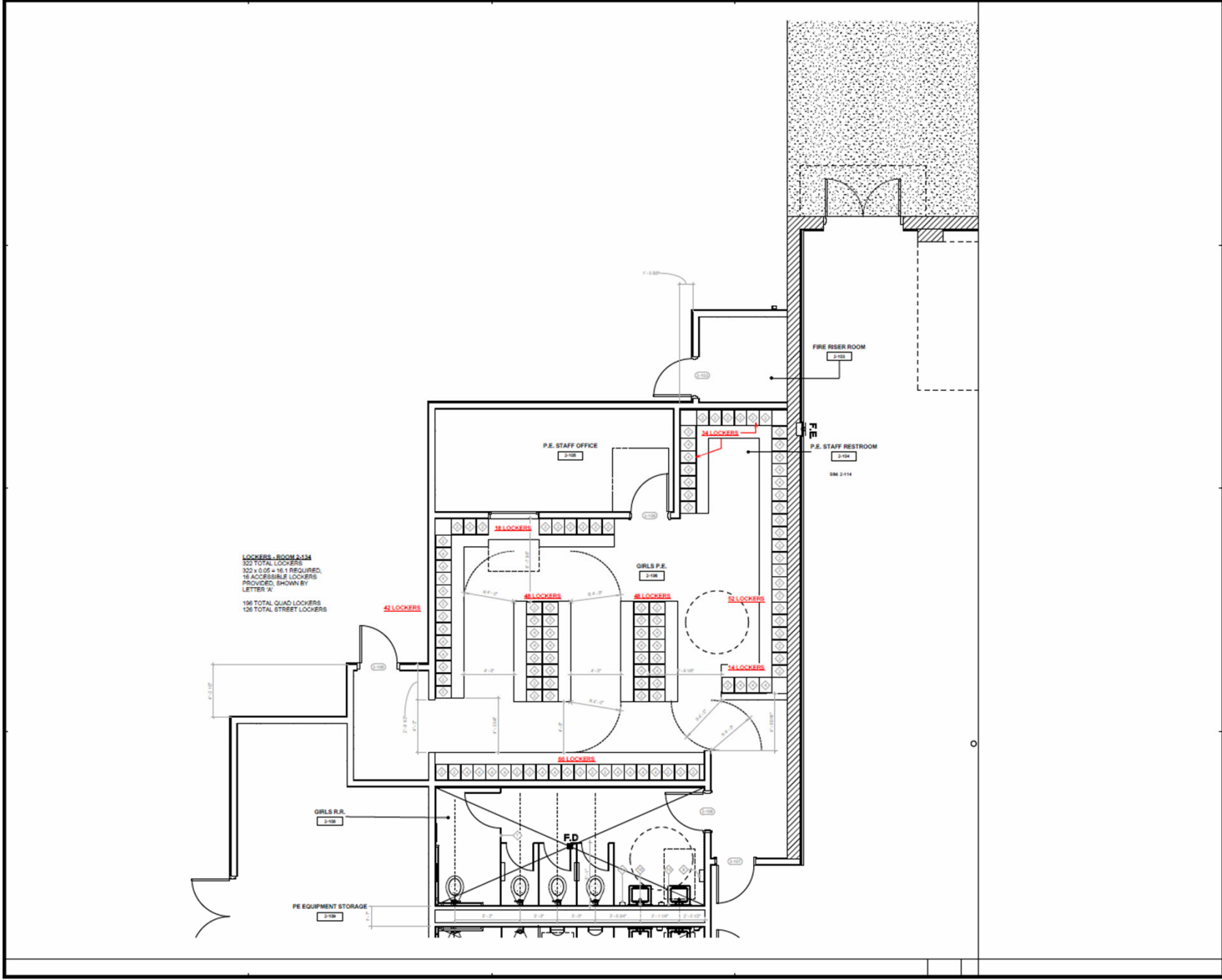
REVISIONS:

NO.	DESCRIPTION	DATE

DATE ISSUED: 9/30/15
 PROJECT NO: 1340121
 DSA APPLICATION NO: 03-124778
 SCALE: As Indicated
 SHEET NUMBER: A2-11.9
 SHEET TITLE: MPR - BLDG. 2 - FLOOR PLAN Copy 2 Copy 1



1748 338 338 888/VA.ARCHITECTS@GMAIL.COM



LOCKERS - ROOM A214
 322 TOTAL LOCKERS
 322 x 0.05 = 16.1 REQUIRED,
 16 ACCESSIBLE LOCKERS
 PROVIDED, SHOWN BY
 LETTER 'A'

198 TOTAL QUAD LOCKERS
 126 TOTAL STREET LOCKERS

OWNER: OXNARD SCHOOL DISTRICT
 PROJECT NAME: FREMONT MIDDLE SCHOOL

CLIENT ADDRESS: 1031 North H Street, Oxnard, CA 93030

REVISIONS:

NO.	DESCRIPTION	DATE

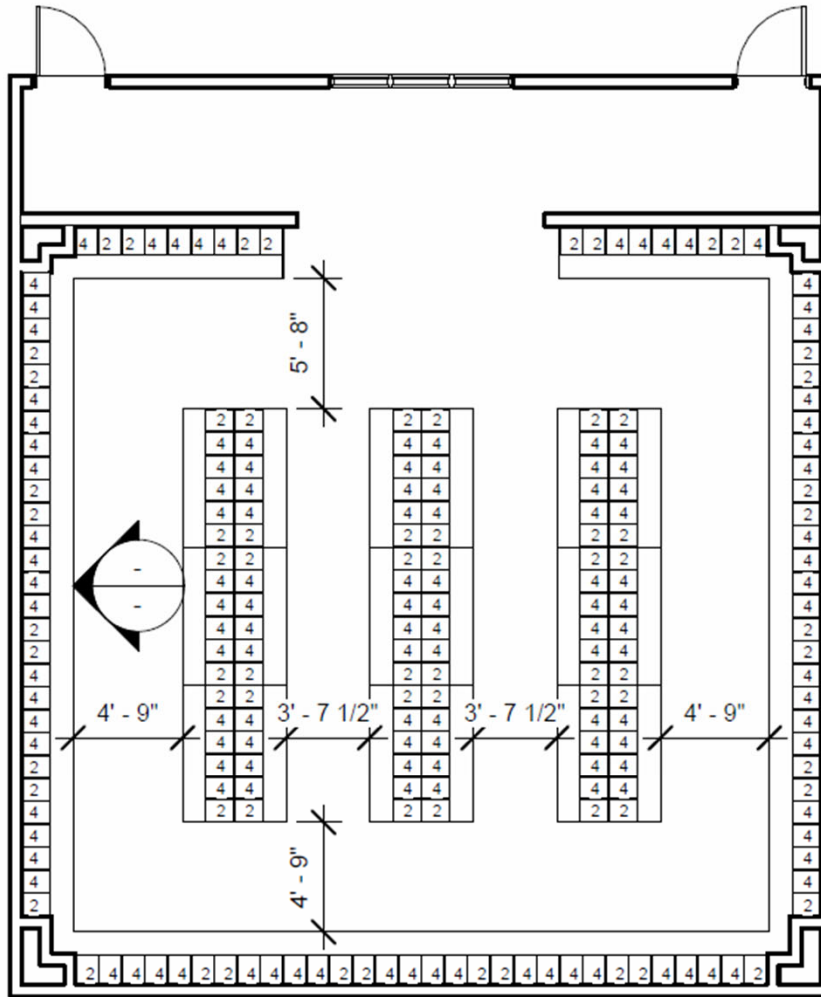
DATE ISSUED: 9/9/15
 PROJECT NO: 1340121
 DSA APPLICATION NO: 08-124778
 SCALE: 3/8" = 1'-0"
 SHEET NUMBER: **A2-41.5**

SHEET TITLE:
**MPR - BLDG. 2 -
 ENLARGED
 PLANS OPTION 3**



4 AUTUMN DRIVE, SUITE 1100, SANTA ANA, CA 92705
 TEL: 714.942.1800 FAX: 714.942.1801
 WWW.SVA-ARCHITECTS.COM

1440 S.F. MODULAR



2 = DOUBLE STACK STREET LOCKERS
 4 = QUAD STACK P.E. LOCKERS

560 P.E. LOCKERS
 144 STREET LOCKERS



Technology

- The current specification requires 3 monitors for new construction classrooms and to the extent possible in existing classrooms
- Remaining projects consist of improvements to existing classrooms which to the large extent may only accommodate 2 monitors
- It is recognized that display technologies will continue to accelerate in design, connectivity and function
- At this time, all classrooms to be improved with display devices are wired to accept different modalities
- The key is to have full display integration capability
- In order to fully integrate technology into the classroom:
 - Curriculum must be integrated
 - Initial and ongoing training must be provided
 - Ongoing tech support must be available

Further Considerations

- Absent other sources of funds, there are limited funds available
- Once Fremont and Lopez are fully approved and under construction, remaining monies may be available to provide additional improvements
- Major modifications to the program may require additional local funds, if available
- Otherwise, modifications to the project list may be required
- A future additional bond program may be required to meet any remaining unmet needs and/or increased specifications

OSD BOARD AGENDA ITEM

Name of Contributor: Dr. Anabolena DeGenna

Date of Meeting: January 05, 2026

Agenda Section: Section G: Conclusion

ADJOURNMENT

Moved:

Seconded:

Vote:

ROLL CALL VOTE:

Salas ____, Gonzales ____, Madrigal Lopez ____, Melanephy ____, Robles-Solis ____

Anabolena DeGenna, Ed. D.

District Superintendent and Secretary to the Board of Trustees

This notice is posted in conformance with the provisions of Chapter 9 of the Government Code, in the front of the Educational Services Center; 1051 South A Street, Oxnard, California by 1:00 p.m. on Friday, January 2, 2026.

FISCAL IMPACT:

N/A

RECOMMENDATION:

N/A