

# Moonachie Public Schools

ROBERT L. CRAIG SCHOOL  
20 WEST PARK STREET  
MOONACHIE, NEW JERSEY 07074

JAMES KNIPPER  
Superintendent/Principal  
jknipper@moonachieschool.org

OFFICE: (201) 641-5833 ext. 110  
FAX: (201) 641-3723

January 2<sup>nd</sup>, 2026

## 25-26 Community Update January 2, 2026

Moonachie Families & Friends,

We hope this message finds your family healthy and having a wonderful New Year! We are excited to welcome everyone back on Monday January 5th. Please review this update thoroughly and carefully.

### Mr. Gingerelli

Mr. Gingerelli has welcomed his first baby daughter during break! Mrs. Gingerelli and the baby are doing well! Please join me in congratulating the family!

Mr. Gingerelli will be out of school for a couple of months. Ms. O'Neill will be taking over all Physical Education classes and health classes taught by Mr. Gingerelli. Ms. O'Neill just finished serving as a 5<sup>th</sup> grade maternity leave with us so she is very knowledgeable of our kids, procedures, and routines. If you have any questions please let Mrs. Genatt or I know.

### Academic Excellence

Research is clear, that January through Spring Break is the most impactful time for student learning every school year. Now that we are through the holidays and (hopefully) the worst of illnesses are behind us, please continue to support your child's academic progress this winter. Read with them at night, drop them off early, quiz them on math facts, and help them study. Kids can make a lot of growth if we stay focused and maintain good attendance. We thank you in advance for this continued partnership.

### New Road

Our road extension is ready to open on Monday January 5<sup>th</sup>. This project allows us to keep the flow of traffic moving in one-direction, making our campus much safer for everyone. During the hours of 7am-9am and 2pm-4pm, West Park Street as you enter the school is now **ONE-WAY**. All traffic will exit via the new extension to Teresa Court. The gates will be closed through traffic at all other times. This means from 9am-2pm, you will continue to exit the campus the same way you have always done.

Entrance and Dismissal are going to look and feel different. We are expanding to two drop-off and pick-up zones. As always, do not get out of your car. Please keep moving your car as forward as possible. This new road will only free up congestion if **EVERYONE** stays in their car and keeps moving forward. We will make sure your child gets to you safely.

Also, students will **ONLY** be permitted to enter vehicles from the passenger side, including backseats. If you need to rearrange car seats this weekend, please do so.

# Moonachie Public Schools

ROBERT L. CRAIG SCHOOL  
20 WEST PARK STREET  
MOONACHIE, NEW JERSEY 07074

JAMES KNIPPER  
Superintendent/Principal  
jknipper@moonachieschool.org

OFFICE: (201) 641-5833 ext. 110  
FAX: (201) 641-3723

## Entrance



- Entrance will have two lanes & two unload zones.
- Zone 1 will be the patch of grass right where Officer Billy Stands.
- Zone 2 is unchanged.
- **Please DO NOT GET OUT OF YOUR CAR AND DO NOT ESCORT YOUR CHILD TO THE DOOR!**
  - **If you wish to do this, you must park on the grass past the dumpsters and walk up to the school.**

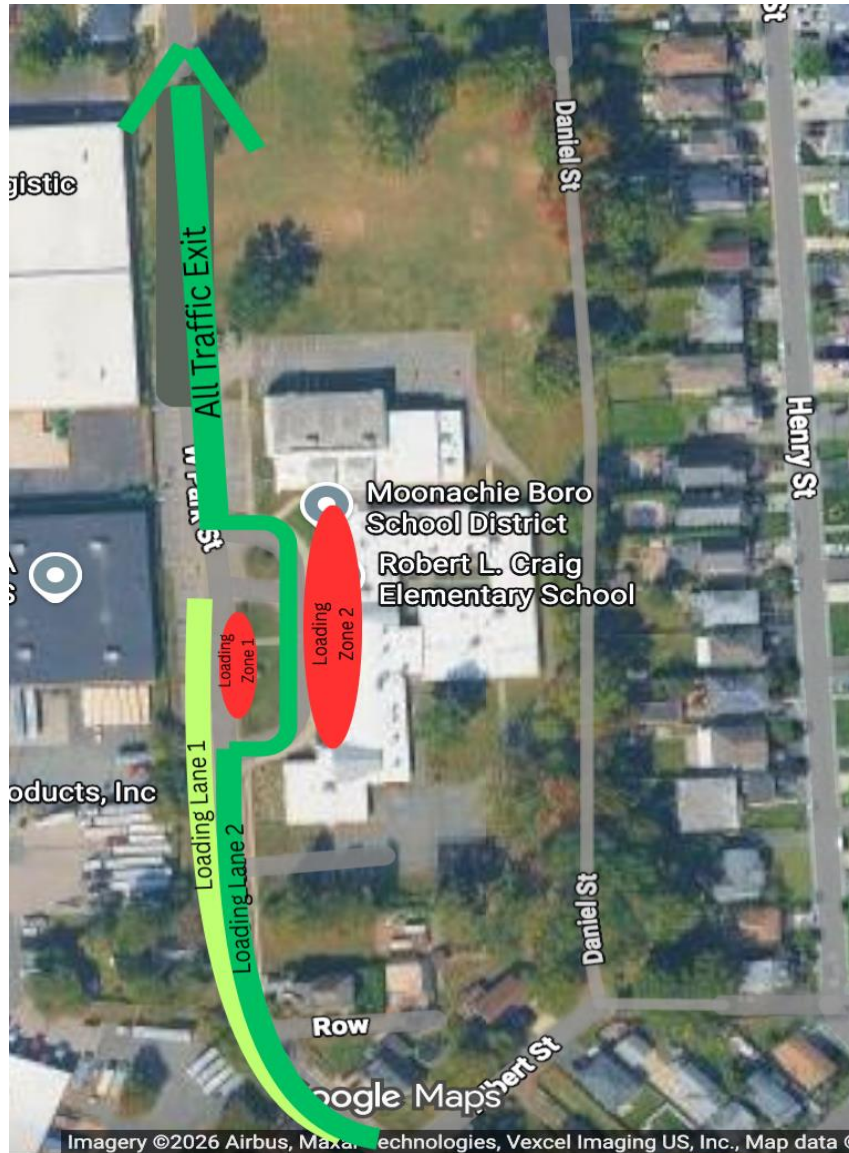
# Moonachie Public Schools

ROBERT L. CRAIG SCHOOL  
20 WEST PARK STREET  
MOONACHIE, NEW JERSEY 07074

JAMES KNIPPER  
Superintendent/Principal  
jknipper@moonachieschool.org

OFFICE: (201) 641-5833 ext. 110  
FAX: (201) 641-3723

## Dismissal



- Dismissal will have 2 lanes coming into the school with 2 loading zones.
- Kids will only be permitted to enter vehicles from the passenger side.
- Both lanes require you to pull as far up as you can before loading.
  - Pulling all the way up will expedite everyone's dismissal timelines and shorten the car line length.
  - Please, Please, Please!!
- **Please DO NOT GET OUT OF YOUR CAR AND WALK UP TO THE DOOR!**
  - **If you wish to do this, you must park on the grass past the dumpsters and walk up to the school.**

# Moonachie Public Schools

ROBERT L. CRAIG SCHOOL  
20 WEST PARK STREET  
MOONACHIE, NEW JERSEY 07074

JAMES KNIPPER  
Superintendent/Principal  
jknipper@moonachieschool.org

OFFICE: (201) 641-5833 ext. 110  
FAX: (201) 641-3723

## Pick Up times HAVE NOT CHANGED.

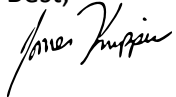
- PREK only from 2:45pm-3:00pm.
- Please do not arrive before 3pm if you have a K-5 student.
- Please do not arrive before 3:10pm if you have a 6-8 student.

Please inform all grandparents, aunts, uncles, or anyone else who is responsible for dropping off or picking up your child. These procedures will be strictly enforced.

Mr. Knipper is available all day today if you have any questions. His cell phone is 551-727-0429, you may call or text or email [jknipper@moonachieschool.org](mailto:jknipper@moonachieschool.org).

Have a great weekend and we can't wait for a successful 2026 of teaching and learning!

Best,



James Knipper  
Superintendent/Principal



Dana Genatt  
Director of C&I/AP



Natasha Dillon  
Director of CST/AP