



Franklin Elementary

2212 N. Jarchow St. Appleton

Family Newsletter

JANUARY 2026

Dear Franklin Families,

As the days grow colder, we want to remind everyone how important it is for students to come to school ready for outdoor recess and transitions between classrooms and home. Fresh air and play are vital for our students' health and learning, but cold, wet clothing can make those times uncomfortable and unsafe. Please help us keep every child warm and able to fully participate by sending your student(s) with the following items throughout the winter season:

- a warm jacket
- snow pants for cold, snowy and wet conditions
- a hat that covers the ears
- mittens or warm gloves
- winter boots for snow and ice

Labeling coats, hats, boots, and mittens with your child's name helps us reunite lost items quickly. If your family has extra winter gear that's still in good condition and you're able to donate it, the school gratefully accepts gently used jackets, snow pants, hats, mittens, and boots to help other students in need.

A few additional reminders and tips for families:

- Send an extra pair of socks and mittens in your child's backpack during the coldest weeks.
- Dress children in layers so they can adjust clothing for indoor comfort after recess.
- Check that boots still fit – children's sizes can change quickly over the winter months.

If your family needs assistance obtaining winter clothing, please reach out to your child's teacher or the main office at (920)852-5475. We can connect you with community resources, school-run clothing supports, or local donation programs. No family should worry about winter gear – we're here to help.

This time of year invites reflection. As we approach the winter break, we celebrate the many accomplishments our Franklin students and staff have achieved this year – academic growth, acts of kindness, creative work, and the small everyday successes that add up. We're grateful for your partnership in supporting each child's learning and well-being.

Winter break is a wonderful opportunity to rest, celebrate with family and friends, and make lasting memories. On behalf of the Franklin staff, thank you for your continued support and involvement in our school community. We wish every family a safe, warm, and joyful break.

Important dates to remember:

- Winter break: Wednesday, December 24, 2025 – Sunday, January 4, 2026 (Franklin will be closed)
- School resumes: Monday, January 5, 2026

Warmly,

Denise Tetzlaff,
Franklin Principal





Franklin Elementary

2212 N. Jarchow St. Appleton

JANUARY 2026

JANUARY

1-4 Winter Break

5- School Resumes

5- Choir 11:40-12:05 PM

5-30 iReady Testing

5- STEM Club 3:45-4:45 PM

7- Gr 2 Field Trip 8:45-11:15 AM

8- Gr 3 Field Trip 9:00-12:30 PM

8- Girl Scout Meeting 3:30-5:30 PM

8- PTO Meeting 4:00-5:00 PM

9- Choir 11:40-12:05 PM

12- Choir 11:40-12:05 PM

12- STEM Club 3:45-4:45 PM

15- K-2 Quarterly Assembly 9:30-10:00 AM

15- KG & Gr 1 Field Trip 11:45-2:00 PM

15- Gr 3-5 Quarterly Assembly 1:30-2:00 PM

16-19 NO SCHOOL

21- PTO Dining Fundraiser- Laynes Chicken Fingers 4:00-9:00 PM

22- Girl Scout Meeting 3:30-5:30 PM

23- Choir 11:40-12:05 PM

23- KA Jazz Band and Finesse Performance 12:45-1:15 PM

26- Choir 11:40-12:05 PM

26- STEM Club 3:45-4:45 PM



How to Contact Franklin

Franklin Elementary School: (920) 852.5475

Denise Tetzlaff, Principal / Matt Schauer, Dean of Students / Misty Dorton, Secretary

Dean's Desk

Mr. Schauer

schauermatthew@aasd.k12.wi.us

920.852.5475 ext. 28021



Embrace the Every Day



Attendance

Please continue to encourage your child to come to school each day.

As a school, we have been averaging a little over **94%** of our students here each day.

With flu and cold season here, please ensure that your child is getting enough sleep, eating healthy, and washing their hands.

Expectations

Please continue to reiterate our **THREE** Universal Expectations at home!

These include:

Be Kind to Yourself and Others

Always Try Your Best

Keep Our School Community Safe and Clean





CHECK THIS OUT



Franklin Faces in the Crowd

In an effort to recognize students who are going above and beyond what is expected of them at Franklin, "Faces in the Crowd" has been established. Students are nominated by their classroom teacher, specialist teacher, or other staff members.



“ Lane took the time to offer help to students who were needing assistance on the math. She not only has a strong desire to learn herself, but she wants her peers to succeed as well. Way to go, Lane! ”

“ Alonni shows determination in all that she does. She models respect and hard work in all areas of school life. ”

“ Addie has been a big help to our new student. I love how she has been so kind! ”



“ Leah is nominated for being an exemplary learner! She is consistently engaged in her learning, always contributes thoughtful comments during our discussions. ”

“ Evelyn has done a great job of helping with our food drive, with things around the classroom, and with student council. Thanks for all you do! ”

“ Emarie is doing the hard work to meet her goals every day. She has a desire to learn and it's showing! ”



Dear Franklin Families,

We are excited for the start of a new school year! Franklin Elementary staff has worked with the Safe Routes to School Program, the Appleton Police Department, and the Appleton Department of Public Works to review drop off and pick-up procedures at our school. The Franklin procedures are safe for the children and allow for buses and emergency vehicles to adequately access the school and surrounding neighborhood. Patience and compliance is essential to make this work as smoothly as possible. **Attached to this letter you will find a map to use as a reference, as you review the following procedures.**

Dropping off by personal vehicle in the AM:

- Students can be dropped off when supervision begins at **8:10am**.
- You may park in any of the areas on the map shown in green. Remind your student to use the crosswalks and crossing guards when crossing the street and to cross with caution.
- Do not park in areas marked in red or blue as they are designated no parking zones or bus zones.
- **Areas marked in yellow are designated hug-n-go zones. Cars should pull over, students should exit on the passenger side, and the car should exit the area. Cars should not be in this area for longer than two minutes and cars should never be parked or left unattended.**

Drop Off Supervision:

- Supervision begins at 8:10am, students arriving at this time should wait in line by their designated grade level door. The door is by the blacktop next to the playground. Please note: No students may be on school property prior to 8:10am, except if they are in the YMCA Extended Day Learning Program.
- We will be opening our doors at 8:18am for students to enter at their designated grade level door. All goodbyes must be said outside. Classroom teachers will greet students and bring them to the classroom. Student learning begins at 8:22am. Any student arriving after 8:22 will need to enter through the main entrance to check in at the office and will be marked tardy if after 8:27am.
 - Kindergarten, Grade 1, and Grade 2 will use **Door G**
 - Grade 3, Grade 4, and Grade 5 will use **Door F**

Picking up by personal vehicle in the PM:

- Students will be dismissed from school at **3:20pm** and will exit the building with the classroom teacher from their grade level designated doors.
- You may park in any of the areas on the map shown in green. Remind your student to use the crosswalks and crossing guards when crossing the street and to cross with caution.
- Do not park in areas marked in red or blue as they are designated no parking zones or bus/cab zones.

Overall Tips:

- Here is information from the Appleton Police Department and Appleton Department of Public Works that will help you to plan for the best and safest route to school.
 - [Walking Map Letter](#)
 - [Franklin Walking Map](#)

Safety remains our highest priority to ensure that students arrive and are dismissed from school in a safe and organized way. We ask everyone to correctly follow our pick-up and drop-off procedures. Failure to do so creates chaos, frustration and unsafe conditions. **Each family should discuss these drop-off and pick-up procedures together.** Thank you in advance for your cooperation in following these procedures, which will create a safe and efficient start and end to each school day.

Sincerely,

Denise Tetzlaff, Franklin Elementary Principal

Parent Parking | Franklin Elementary School

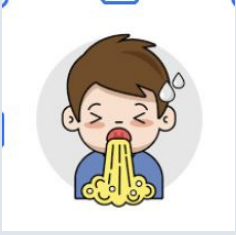


- Bus/Cab Loading Area
- Parent Pick-up/Drop-off
- Parent/General Parking
- Staff Parking
- No Parking

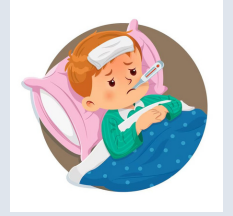


Source:
 Base data Imagery provided by Wauzabago County 2021.
 SRIS data provided by ECWRPC 2021.
 This data was created for use by the East Central Wisconsin
 Regional Planning Commission Geographic Information
 Systems. Any other use/application of this information is the
 responsibility of the user and such use/application is at their
 own risk. East Central Wisconsin Regional Planning
 Commission disclaims all liability regarding fitness of the
 information for any use other than for East Central Wisconsin
 Regional Planning Commission business.

PREPARED AUGUST 2022 BY:
 ECWRPC



Reasons To Be Out of School!



- ★ *Fever: Please be fever free for 24 hours before returning to school*
- ★ *Vomiting: Please be vomit free for 24 hours before returning to school*
- ★ *Diarrhea: Please return to school after 24 hours free of diarrhea*

Please note that students CAN come to school with a common cold
(runny nose, scratchy throat, cough)



**Attendance
Matters**

Every student. Every day.



HEALTH ROOM

newsletter

HOW TO STAY HEALTHY DURING WINTER ADVENTURES

Winter is full of fun – sledding, building snowmen, and outdoor exploring! But to enjoy the season safely, here are some important health tips:

1. Dress in Layers

Winter dressing is all about **three layers**:

- **Base layer:** Thin, close to the skin, keeps sweat away.
- **Insulating layer:** Sweaters or fleece to stay warm.
- **Outer layer:** Waterproof and windproof jacket to protect from snow and cold.

2. Protect Your Extremities

Your head, hands, and feet lose heat fastest.

Staying dry is just as important as staying warm!

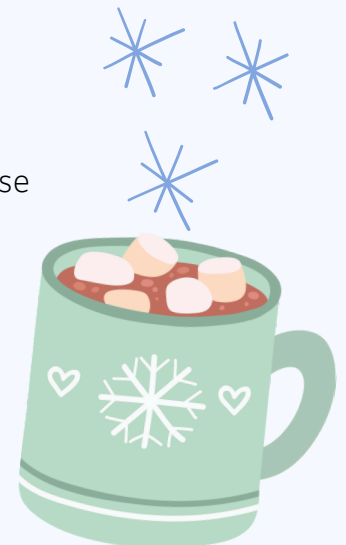
- Wear a **snug hat**
- Use **warm or waterproof gloves**
- Put on **thick socks**

3. Stay Hydrated

- Even though it's cold, your body still needs water.
- Bring a warm drink in an insulated cup to stay hydrated and comfortable.

4. Eat Nutritious Snacks: To keep your energy up during snowy activities, choose healthy snacks such as:

- Apple slices with peanut butter
- Mixed nuts and dried fruit
- Whole-grain turkey-and-cheese sandwiches



Final Takeaway

Dress warmly in layers, stay dry, hydrate often, and eat balanced snacks. With these simple tips, you'll enjoy winter fun safely and stay healthy all season long!



HEALTH SERVICES * P.O. Box 2019, Appleton, WI 54911 * 920-852-5344

HAND WASHING CAN SAVE LIVES!



Hand washing is one of the most important steps we can take to avoid getting sick and spreading germs to others. Many diseases and illnesses are spread by not washing hands with soap and water. It is best to wash your hands with soap and clean running water for 20 seconds. Although soap and water are more effective at removing germs, alcohol-based hand rubs significantly reduce the number of germs on skin and are fast acting.

Per the CDC, handwashing:

- Reduces the number of people who get sick with diarrhea by 23-40%
- Reduces diarrheal illness in people with weakened immune systems by 58%
- Reduces respiratory illnesses, like colds, in the general population by 16-21%
- Reduces absenteeism due to gastrointestinal illness in schoolchildren by 29-57%

When washing hands with soap and water:

- Wet your hands with clean running water and apply soap. Use warm water if it is available.
- Rub hands together to make a lather and scrub all surfaces, making sure to clean in between fingers, thumbs, the back of your hand and your wrists
- Continue rubbing hands for 20 seconds. Need a timer? Imagine singing "Happy Birthday" twice to a friend!
- Rinse hands well under running water
- Dry your hands using a paper towel or air dryer. If possible, use your paper towel to turn off the faucet

Remember: If soap and water are not available, use alcohol-based hand sanitizer to clean hands.

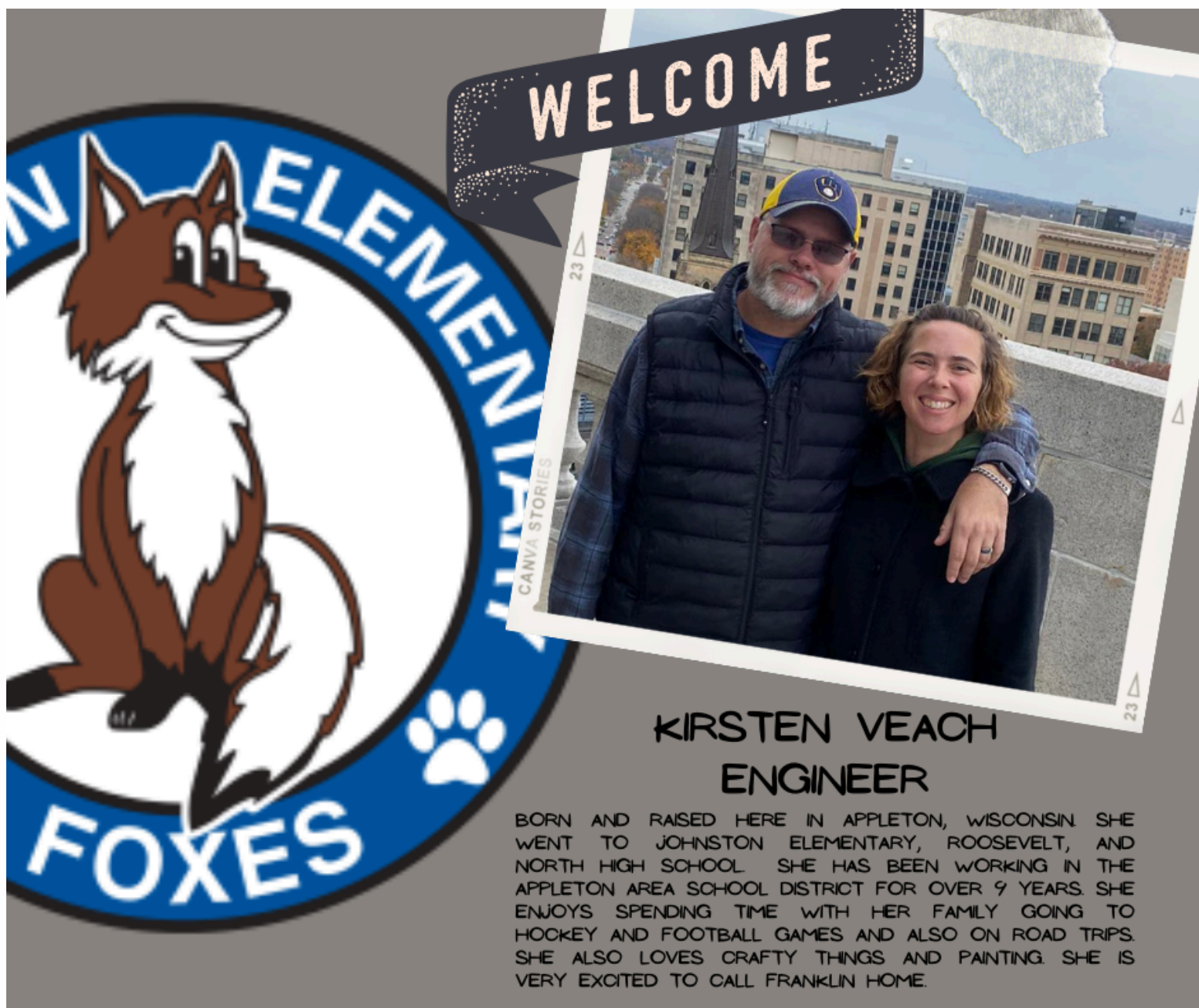
When using an alcohol-based hand sanitizer:

- Apply product to the palm of one hand
- Rub hands together
- Rub the product over all surfaces of hands and fingers until hands are dry.

When should you wash your hands?

- Before preparing or eating food
- After going to the bathroom
- After changing diapers or cleaning up a child who has gone to the bathroom
- Before and after tending to someone who is sick
- After blowing your nose, coughing, or sneezing
- After handling an animal or animal waste
- After handling garbage
- Anytime your hands are visibly dirty
- Before and after treating a cut or wound

WELCOME TO FRANKLIN ELEMENTARY MRS. VEACH!



**KIRSTEN VEACH
ENGINEER**

BORN AND RAISED HERE IN APPLETON, WISCONSIN. SHE WENT TO JOHNSTON ELEMENTARY, ROOSEVELT, AND NORTH HIGH SCHOOL. SHE HAS BEEN WORKING IN THE APPLETON AREA SCHOOL DISTRICT FOR OVER 9 YEARS. SHE ENJOYS SPENDING TIME WITH HER FAMILY GOING TO HOCKEY AND FOOTBALL GAMES AND ALSO ON ROAD TRIPS. SHE ALSO LOVES CRAFTY THINGS AND PAINTING. SHE IS VERY EXCITED TO CALL FRANKLIN HOME.

TESTING DATES



IREADY TESTING REMINDERS

Please support your child on this important assessment by promoting the following behaviors:

- Come to School on Time
- Do Your Best Work
- Take Your Time
- Get Good Sleep & Eat Breakfast
- Show What You Know

**IREADY:
JAN 5TH-27TH**



AIMSWEB DIAGNOSTIC SCREENER

- Be on the lookout for your child's screener report at the end of January!
- The purpose of these screeners is to identify Kindergarten through 3rd grade students in need of extra literacy support in the areas of phonics, fluency, and comprehension.
- Thank you for partnering with us!

**AIMS WEB:
JAN. 13TH-27TH**



LAYNE'S

— Chicken Fingers —

ASTERO NIGHT



January 21st

4:00pm-9:00pm

WE'RE LOCATED AT:

3600 W College Ave

Appleton, WI 54914

20%

OF PROCEEDS WILL BE DONTATED TO:
Franklin Elementary
(MUST MENTION)

ONLY APPLIES TO ORDERS PLACED IN THE LOBBY AND DRIVE-THRU