



Franklin Elementary

2212 N. Jarchow St. Appleton

Family Newsletter

November 2025



Dear Franklin Families,

November is a wonderful time to pause and reflect on all the things we are grateful for. On behalf of the entire Franklin staff, I want to extend a heartfelt thank you to each of you. Your unwavering support and partnership are truly valued, and together, we are building the best possible learning experience for every Franklin student.

Our recent parent-teacher conferences were a remarkable success. The conversations were filled with enthusiasm, positivity, and a clear focus on each student's growth and achievement. Our dedicated staff invest considerable time and care in preparing for these meetings because we know that when families and educators work closely together, students flourish academically, socially, and emotionally. Your active involvement—whether it's through consistent student attendance, open communication, volunteering, meaningful conversations about your child's social and emotional well-being, or participation in extracurricular activities—makes a significant difference in your child's educational journey. Thank you for your continued commitment and partnership!

As we move forward through this school year, we encourage you to keep engaging with your child's learning and progress. Celebrate their successes, both big and small, and help them embrace challenges as opportunities to grow. Together, we can nurture their curiosity, resilience, and love of learning that will serve them well throughout their lives. Remember, every conversation, every moment of encouragement, and every bit of support you provide lays a strong foundation for their continued success.

With the vibrant colors of fall around us and the crisp November air settling in, we also want to prepare for the cooler months ahead. Please take some time to talk with your child/ren about dressing warmly for school, especially for outdoor recess and activities. Layering up will help keep them comfortable and healthy as the weather turns colder.

Thank you once again for everything you do to support your child and our Franklin community. Together, we are making a positive difference in the lives of our students every day. Here's to a season filled with growth, gratitude, and continued progress!

Sincerely,

Denise Tetzlaff
Principal, Franklin Elementary

3 - End of First Quarter

3 - **Take your Family to PE Week!**

4 - GOTR Practice 3:30-5:00 PM

5 - **Take your Family to PE Week!**

6 - GOTR Practice 3:30-5:00 PM

7 - **Take your Family to PE Week**

11 - GOTR Practice 3:30-5:00 PM

11 - PTO Dining Fundraiser at Tom's Drive In 4:00-8:00 PM

13 - GOTR Practice 3:30-5:00 PM

13 - Girl Scout Meeting 3:30-5:30 PM

13 - PTO Meeting 4:00-5:00 PM

17 - Dec 1 - PTO Simple Simon Fundraiser

18 - GOTR Practice 3:30-5:00 PM

20 - LAST GOTR Practice 3:30-5:00 PM

25  Picture Retake Day

26-28 NO SCHOOL



Family to P.E. Week

Our 2nd annual Take your Family to PE event is set for November 3-7. (Please note that these dates are different from the national event dates)

Take your family to PE Week is an event designed to allow students a chance to invite their parents or guardians to physical education class. Please keep this to family members 18 and older.

A more detailed document of class times and dates will come home with all students by October 17th.

Email Mrs Lange with questions. langetaylor@asd.k12.wi.us



[Follow us on Instagram](#)



[Follow us on Facebook](#)

How to Contact Franklin

Franklin Elementary School: (920) 852.5475

Denise Tetzlaff, Principal / Matt Schauer, Dean of Students / Misty Dorton, Secretary



WED = FRI
NOV. 26 = 28

SEE YOU ON
MONDAY, DEC. 1

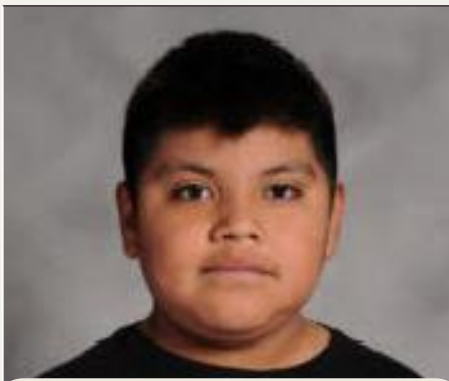


CHECK THIS OUT



Franklin Faces in the Crowd

In an effort to recognize students who are going above and beyond what is expected of them at Franklin, "Faces in the Crowd" has been established. Students are nominated by their classroom teacher, specialist teacher, or other staff members.



“
For always following ALL the expectations
”



“
Charlotte is an involved member of her classroom. She works to her personal best and is a good friend to others.
”



“
Fiona has been showing perseverance and a growth mindset in all that she does this month.
”



“
Alex has been doing an amazing job focusing and listening!
”



“
Laiya is a top participator during our class discussions. Whether it's sharing her noticing's and wonderings during Wit & Wisdom or giving her answers in math, she is always willing to express her ideas to help her classmates learn.
Nice work, Laiya!
”

Dean's Desk

Mr. Schauer

schauermatthew@aasd.k12.wi.us

920.852.5475 ext. 28021



Attendance Matters!

Having your child here at school each day does make a difference!



Here at Franklin, we have
3 Universal Expectations for our students.

- Be Kind to Yourself and Others
- Always Try Your Best
- Keep Our School Community Safe and Clean

Please reiterate expectations to your child.
We want our students to feel safe at school so they can maximize their learning!

COUNSELOR CORNER

NOVEMBER 2025



What We've Learned

This month students in grades K-2 will be working on feeling identification. Students in grades 3-5 will be working on Friendship and Problem Solving Skills. All grades are working on self regulation strategies. Various strategies will be included in the Family Newsletter. Towards the end of November and beginning of December Sources of Strength Lessons will be taught in all classrooms.



Due to the government shutdown, our district has learned that FoodShare (SNAP/food stamps) benefits will be delayed and any benefit remaining on cards will not be accessible after 10-31. Families may want to stock up on food before that time. [FoodShare Link](#)

Contact Info

School Counselor: Kelly O'Rourke

Email:

orourkekelly@aasd.k12.wi.us

Phone: 920-852-5475



Preparing for Winter Recess at Franklin

Students have 2 recesses every day.

Snow pants and boots will be required to go on the wood chips and field when snow is on the ground.

COLD WEATHER CLOTHING



winter jacket



hat



earmuffs



scarf



mittens



gloves



vest



snow pants



socks



boots



HEALTH SERVICES * P.O. Box 2019, Appleton, WI 54911 * 920-852-5344

Does Good Attendance Matter?



Success Starts with Attendance

If a student misses 10 days per year for the lifetime of their school career, that adds up to 140 days... almost a full school year. Research and experience teach us that students with poor attendance are at greater risk for school difficulty. Making up missed schoolwork is very helpful, but missed classroom instruction cannot be made up.

We try to impress upon students that there is a difference between “not feeling well” and being truly sick. We all know there are times when we do not feel 100%, but still try to make it through the day. Students understand that parents do this in order to keep their jobs. This is a real “life skill” that employers look for when hiring. They want employees they can count on to come to work. For students, school is their job._____

Common sense can guide parents in deciding when a child is sick enough to be at home. If you are uncertain about sending your child to school, please reference [Is Your Child Well Enough to Go to School](#) from our district website or please call us. Sometimes a second opinion can be of help! Not only is school attendance a legal requirement, it encourages behavior that will help your child be successful in life. So while the goal of “perfect attendance” may not be realistic for all, great school attendance is something to work towards!

Here are some helpful tips:

- Schedule appointments outside of school hours
- Request beginning or end of day appointments
- If appropriate, consider having child return for ½ day if feeling better.
- Ask your provider to write a letter for the time they missed from school

ATTENTION!
PLEASE!

STUDENT PROOFS
WERE SENT HOME
THURSDAY, OCT. 9

Photo **Retake** Day
November 25
9:00 - 1:00



To place an order, follow the instructions on your student(s) form.



Need to schedule a RETAKE? Please fill out the retake form [here](#), or your student(s) will not be able to have their photo retaken.

Harmann Studios





COMING TOGETHER TO
SUPPORT OUR CHILDREN

NOVEMBER 2025 PTO NEWSLETTER



FOLLOW UP

Thank You to all of you who have supported our events so far this year!! Our Book Fair and Dance were smashing successes because of you!!



UPCOMING

In November the PTO will kick off our staple Fundraiser of the year, Simple Simon Bake Sale. It is important to note to those of you that have participated in the past, this fundraiser will be moving to an online format. All orders and payment will be collected through Simple Simon's Fundraiser Website.

REMINDERS



Follow us on Facebook:
facebook.com/FranklinFoxesPTO

Download the Box Tops For Education app to earn cash for Franklin!!

DATES TO REMEMBER

Tuesday November 11

- Tom's Fundraiser Night
- 4:00-8:00 pm

Thursday November 13

- PTO Meeting
- 4:00 pm

Monday November 17

- Simple Simon Kick Off

Tuesday December 2nd

- Simple Simon Orders Due

If you have any questions contact us at: FranklinFoxesPTO@gmail.com

FUNDRAISER

JOIN US



JOIN US

TUESDAY NOVEMBER 11TH 4-8 PM

701 E WISCONSIN AVE

**MAKE SURE TO MENTION
YOU ARE WITH FRANKLIN AT
THE TIME OF ORDERING**

Simple Simon **BAKE** Sale

a Franklin Fall Fundraiser

NOVEMBER 17TH- DECEMBER 2ND

*Scan Here to
Place Order*



Or Use This Link:

[https://simplesimonbakery.com
/franklin-elementary-school-
simple-simon-bakery-
fundraiser-2025/](https://simplesimonbakery.com/franklin-elementary-school-simple-simon-bakery-fundraiser-2025/)

**ALL ORDERS MUST BE PLACED ONLINE!
SHARE LINK FOR OTHERS TO MAKE PURCHASE AND/OR
COLLECT ORDERS AND ENTER THEM ONLINE YOURSELF
(ATTACHED FORM IS NOT TO BE TURNED IN, IT IS
INCLUDED TO HELP COLLECT ORDERS.)**

Orders Due December 2nd

Order Pick Up December 17th 3:30-5:00PM at Franklin

Any Questions?

Contact PTO at FranklinFoxes@gmail.com



VOLUNTEERS IN TUTORING AT LAWRENCE



LAWRENCE UNIVERSITY CENTER FOR COMMUNITY
ENGAGEMENT AND SOCIAL CHANGE PRESENTS:

FREE HOMEWORK HELP

— Available Virtually & In-Person —

SIGN UP TO BE PAIRED WITH A VOLUNTEER TUTOR

*The Volunteers in Tutoring at Lawrence (VITAL) Program serves
K-12 students in the Appleton Area School District.*



FOR MORE INFORMATION, PLEASE VISIT [GO.LAWRENCE.EDU/VOLUNTEER](https://go.lawrence.edu/volunteer)
OR EMAIL [COMMUNITY.ENGAGEMENT@LAWRENCE.EDU](mailto:community.engagement@lawrence.edu).





Monthly Newsletter

November 2025



Did you know?



A number of schools in our district participate in the USDA's Fresh Fruit and Vegetable Program (FFVP). Your school is one of them. The FFVP provides students with a healthy snack when they are away from home, as a way to promote healthful eating habits. The FFVP is free to all elementary school students. These snacks are provided every day, but not during lunch or breakfast. The program features a variety of unique and sometimes new fruits and vegetables to students that they may otherwise not have had the opportunity to sample. To find out more about the program, please check out WI's FFVP webpage: dpi.wi.gov/school-nutrition/programs/fresh-fruit-vegetable.

Fruit and Vegetable Spotlight



Summer Squash

Summer squash are a fruit since it flowers and contains seeds.

Squash is in the same family as melons, pumpkins, & gourds.

FUN FACT

- **The heaviest tomato EVER grown weighed nearly 8 pounds.**

Why eat fruits & vegetables?



- You can eat ALL the parts of a pumpkin except for the stalk.
- Wisconsin's state fruit is the cranberry.
- Cranberries BOUNCE when they are ripe!

This institution is an equal opportunity provider.

Info found at <https://dpi.wi.gov>

Fruits Word Search

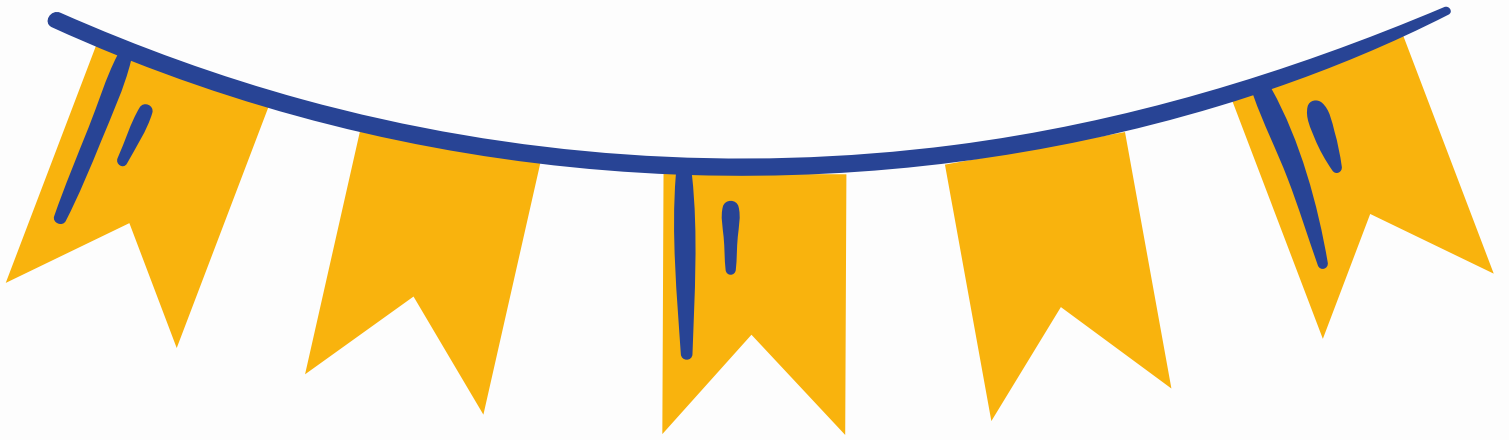
Instructions: Try to find all of the hidden Fruit words in the word search puzzle below. (Words can be spelled forwards, backwards, diagonally, up, or down.)



Word List

APPLE PEACH
GUAVA PLUM
KIWI





Staff Recognition

Help us recognize all the hardworking educators who make going to school worth it, who help take care of kids while their guardians are at work, who are helping to shape students' careers. They all deserve it, but we can only celebrate them with your nomination.

Nominate an educator or principal who makes an impact on the community and is deserving of one of our awards!

Nominate here: <https://form.jotform.com/250417238349156>

***This is for Calumet, Outagamie, and Northern Winnebago.
All nominees must be full-time employees.**