

ADDENDUM #2
To BID #26017
TUSD School Fencing Project

December 24, 2025

TO: ALL PROSPECTIVE BIDDERS
FROM: Travis Unified School District

RE: Addendum #2

This Addendum forms a part of the Contract Documents and modifies the original Bidding Documents as noted below.

Questions and responses:

1. Could you please confirm whether this project requires a Project Labor Agreement (PLA)?
 - **Answer - This project does not require a PLA. Also, we do not have an engineer's estimate; however, pre-qualification is required for this project. We do anticipate that the bid costs will exceed \$1,000,000 and this is one of our bond projects that require pre-qualification also.**

2. Can you confirm if we must submit a bid bond at time of bid?
 - **Answer - This project does require a bid bond. It is listed in Addendum 1:**
 - **11.1. A bid bond by an admitted surety insurer on the form provided by the District, cash, or a cashier's check or a certified check, drawn to the order of the Travis Unified School District, in the amount of ten percent (10%) of the total bid price, shall accompany the Bid Form and Proposal, as a guarantee that the Bidder will, within seven (7) calendar days after the date of the Notice of Award, enter into a contract with the District for the performance of the services as stipulated in the bid**

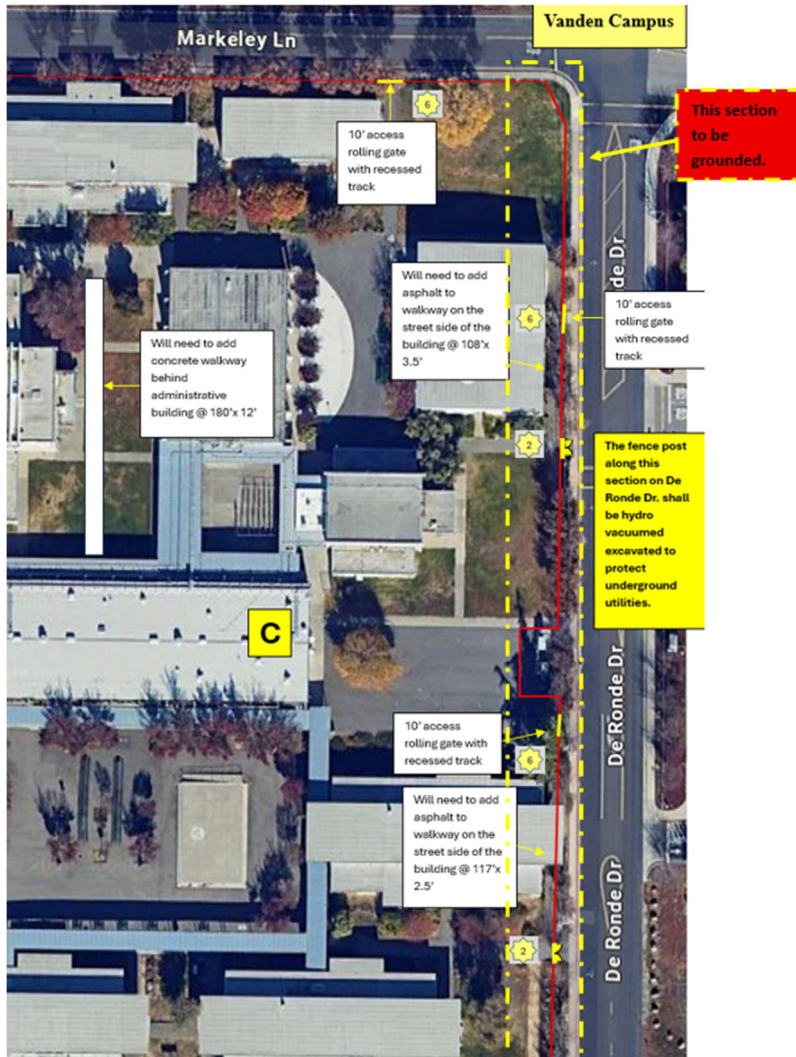
3. Do you have a bid bond form?
 - **Answer – The bid form is listed on our website under Current RFP's/Bids at <https://www.travisusd.org/departments/facilities/rfpsbidscupccaa>**

4. Confirm all fence is to be painted with Tnemec Paint.
 - **Answer - The manufacturer's product shall be factory powder coated to provide corrosion protection. Any exposed steel surfaces resulting from installation, fabrication, cutting, drilling, welding, or other field modifications shall be properly cleaned and coated with the specifications in 2.8 Steel Finishes. Where Tnemec paint is not available, a suitable substitute with equivalent performance characteristics may be used, subject to review and approval by the District.**

5. Confirm all fence is welded, including fence to posts in field.
 - **Answer – See Addendum 1 for change to 1.1 Project Overview, A., 1.**

6. Confirm if grounding is needed and a detail, and a quantity. Cadweld is needed for grounding?
 - **Answer – Grounding is needed around electrical equipment or underground utilities. The locations that are known to have high voltage underground utilities are indicated on the reference maps below. Intervals and locations shall follow the specifications in Project Scope 3.5, Grounding and Bonding.**





7. Confirm NOMA 1 Finish NOMA 2 finish is the goal of this project.
 - **Answer - Where welding is required for fabrication, all welds shall be ground smooth and finished to achieve a NOMMA 2 finish, free of sharp edges, burrs, and surface irregularities, and prepared to receive the specified protective coating.**

8. Confirm No preassemble panels are accepted on this project.
 - **Answer - Preassembled panels are acceptable, provided they fully comply with all project specifications, applicable codes, shop drawings, and performance requirements as specified in the contract documents.**

9. What is the liquidated damages? Completion in one document says 90 days and other document says by August 2026?
 - **Answer - A specific daily dollar amount for liquidated damages is not established herein, as the actual damages incurred by the District due to delay are dependent upon varying circumstances and conditions. Accordingly, any liquidated damages assessed shall be determined based on the nature, extent, and duration of the delay, and the resulting impacts to the District, in accordance with the Contract Documents and applicable law. The completed by date to be listed in the Agreement will be 7 August, 2026.**

10. I noticed the spec calls for grounding and bonding of the fencing, Can the district remove the spec and or identify the exact qty and locations where this will be required?
- **Answer – See question 6**
11. Same thing with the paving and concrete flat work requirements, identify locations and Approx. qty of these locations?
- **Answer – These details are listed and shown on the reference documents in Addendum 1**
12. Fence Spec calls for builders fence who is a wholesale supplier (one of many), but please confirm we are using Fortress fence panels to match the fencing at Golden West?
- **Answer - Fortress fence panels are the preferred product for this project, as it does match the existing panels installed . If an alternative manufacturer is proposed, the substitute product shall meet or exceed all specifications, performance requirements, materials, finishes, and applicable code requirements as set forth in the Contract Documents, and shall be subject to review and approval by the District.**
13. Please confirm district to Repair and replace Irrigation in conflict with new fence and gates installation and or provide an allowance for these costs?
- **Answer – A contingency allowance was added in addendum 1 that will cover the repair and replacement of affected irrigation.**
14. Please confirm all single and double walk thru gates identified on Legend as 1 & 2 are ADA egress gates singles and doubles.
- **Answer – Yes, these gates are ADA egress gates.**
15. Please confirm fence to be demo'd in asphalt/ Concrete or that doesn't conflict with new fence posts placing, and or alignment may be cut off and left in place filled with grout?
- **Answer – Yes, where existing fence posts are removed and cut flush with adjacent concrete/asphalt, the remaining embedded post shall be completely filled with non-shrink grout to prevent water intrusion, corrosion, and deterioration of the surrounding concrete surface. The finished surface shall be flush, smooth, and suitable to receive adjacent finishes, unless otherwise directed by the District.**
16. Please confirm district to provide staking of gate and corner/ end of fence line locations TBD
17. Page 14 of the addendum 1 is a 2 rail fence panel. Do you need 3 rail?
- **Answer – Yes, the fence panels will be a 3-rail design, except for the panels that are provided by the district.**
18. Is this a DSA inspected job?
- **Answer – No, the District will inspect the project.**
19. Are you saying we can use fortress.
- **Answer – See question 12.**
20. Are you saying we use the 7' in area, and the rest of the fence is 8'h?
- **Answer – the 7' fence panels provided by the District are to be used to complete a section, not on the street side of the project. This section shall be uniform in height and style. The contractor is to acquire additional panels needed, if required to complete a section. Remaining fence panels, not provided by the District shall be 8' high. If the manufactured height has a max height of 94", that is acceptable.**

21. All fence is curved top ?
- **Answer – Yes, curved pickets are required.**
22. Due to the extent of groundwork this should be a A License. Please confirm
- **Answer - This project is not strictly a Class A (General Engineering) project. The primary scope of work involves fencing installation; however, some incidental site work, such as concrete pathways, may be required. Contractors should verify licensing requirements with the California Contractors State License Board (CSLB) to ensure they are properly licensed for the specific scope of work they intend to perform.**
23. Please confirm the extent of the vacuuming. On sheet A+ It clearly shows vacuum area. On section C, it states fence posts along this section shall be hydro vac. Are you referring to ALL fence on De Ronde /just along street. Due to Vacuum costs this is pricey..
- **Answer – Yes, all fence posts in these sections are to be hydro vacuumed.**
24. Please confirm irrigation and items encountered. Is there an allowance on these items.
- **Answer – See quest 13.**

Bid Package Drop Off:

Please be advised that Travis Unified School District offices will be on a modified schedule due to the upcoming winter holiday break. This affects the availability for bid drop-off and acceptance during the following dates:

- December 25th-26th: The District will be closed and will not accept any bids during these dates
- December 29th – December 31st, 2025: The District office will be closed to the public. Contractors wishing to drop off bids during this period must contact Tracey Canady in advance to schedule a specific drop-off time to ensure documents are accepted and properly logged.

Contact Information: Tracey Canady Phone: (334) 233-1371

- January 1st – January 2nd, 2026: The District will be closed and will not accept any bids during these dates.
- Normal office hours will resume on Monday, January 5th, 2026.