

LEA Name : North Allegheny SD
Address : 200 Hillvue Lane
Pittsburgh , PA 15237

County : Allegheny
AUN Number : 103026852
LEA Type : SD

Annual Financial Report
Accuracy Certification Statement
For Fiscal Year Ending
6/30/2025

Pennsylvania Department of Education
&
Office of Comptroller Operations

PDE-2056: Intermediate Unit
PDE-2057: School District, AVTS/CTC, Charter School,
and Special Program Jointure

CERTIFICATION: By signing this page I agree that the electronic data submitted is a complete and accurate statement of the financial operations and status of the local education agency for the fiscal year. It has been prepared in accordance with generally accepted accounting principles and established Commonwealth of PA reporting guidelines.

Bendon Hild

Chief School Administrator Signature

10/29/25

Date

Ahlan Weedman

Board Secretary Signature

10/29/25

Date

Kermit J Houser

Contact Person

khouser@northallegheny.org

Contact Person E-mail Address

(412)630-5810

Ext :

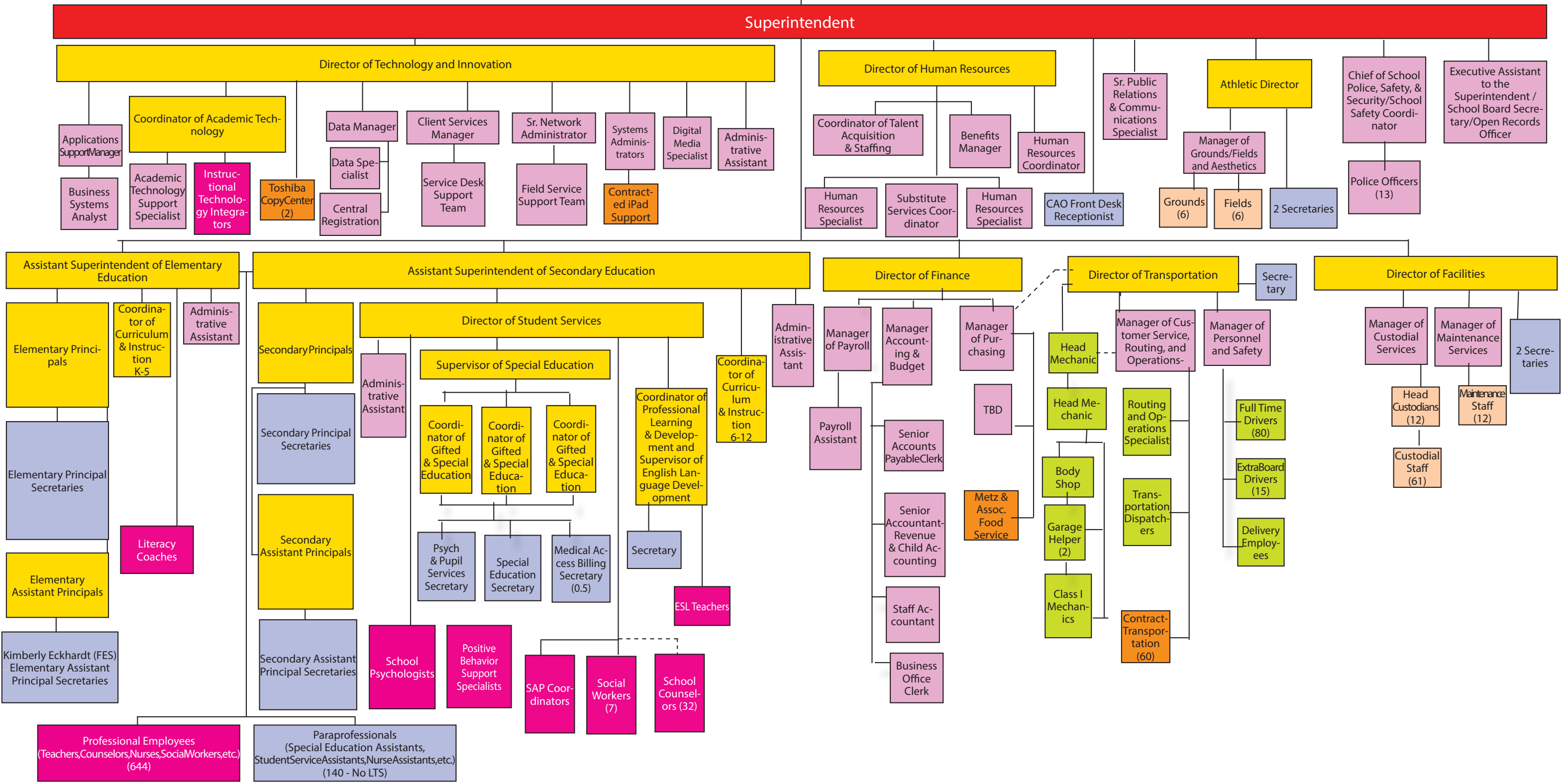
Contact Person Telephone Number

(412)369-5898

Contact Person Fax Number

NA Board of School Directors

Superintendent



Students

North Allegheny School District Organizational Chart

- Administrative
- Professionals
- Confidentials
- Paraprofessionals
- Custodial & Maintenance
- Bus Drivers & Garage /Mechanic Employees
- Outsourced Position

<u>Val Number</u>	<u>Description</u>	<u>Justification</u>
30116	Revenue Detail: A large amount has been reported as Earnings on Investments in Fund 32, account 6500, which should only include interest and/or dividend earnings. Correct or provide a brief explanation of the revenue reported. Revenue Detail 6500, Fund 32: \$421,198.48	Interest earned is due to the allowable investment of the available cash in this fund.
30149	Revenue Detail: An amount has been reported in revenue code 6839. Any revenue received or passed through from another PA LEA (Intermediate Units, School Districts, Charter Schools, and Career Technology Centers) should be reported in the most applicable account(s) 6831, 6832, 6833, 6834, 6836, and/or 6838. Please confirm within the justification that no pass through funds from other LEAs are included in 6839. Governmental Fund Revenue, Account 6839: \$16,220.03	There were no pass thru funds from other PA LEAs included object 6839. This amount consists of Title 1 ESSA funding received from the County of Allegheny for transportation charges.
30509	Revenue Detail: AFR amount must equal PDE FAI System amount. 7332, AFR Rev Detail: \$2,167.59 7332, PDE FAI System: \$14,969.50	Some of this revenue was deferred to the 2025/26 school year.
30550	Revenue Detail: Tax Revenue Data must be reported consistently for current and prior year. Correct the data or enter a justification. 6120, Current AFR Rev Detail: \$0.00 6120, Prior AFR Rev Detail: \$181,498.73	Per Capita tax was eliminated by the school district beginning with the 2024/25 school year.
30560	Revenue Detail: Tax Revenue Data must be reported consistently for current and prior year. Correct the data or enter a justification. 6140, Current AFR Rev Detail: \$0.00 6140, Prior AFR Rev Detail: \$181,498.70	Per Capita tax was eliminated by the school district beginning with the 2024/25 school year.
30625	Revenue Detail: Current Tax Revenue amount cannot exceed 50% variance from prior year amount. Correct the data or enter a justification. 6120, Current AFR Rev Detail: \$0.00 6120, Prior AFR Rev Detail: \$181,498.73	Per Capita tax was eliminated by the school district beginning with the 2024/25 school year.
30635	Revenue Detail: Current Tax Revenue amount cannot exceed 50% variance from prior year amount. Correct the data or enter a justification. 6140, Current AFR Rev Detail: \$0.00 6140, Prior AFR Rev Detail: \$181,498.70	Per Capita tax was eliminated by the school district beginning with the 2024/25 school year.

41162 Expenditure Detail, Salaries (Object 100) and Benefits (Object 200 series):
Amounts must be entered for both Salaries and Benefits.

Function 1420 are for temporary summer salaries, benefits applicable to these employees were charged to their home function code.

Please verify following fund and function codes:
Fund 10 Function 1420;

50284 SOIN: Current Year AFR amount must equal Prior Year AFR amount.
SOIN: Beg Bal, Compensated Absences: \$13,928,520.00
SOIN: PY Ending Bal, Compensated Absences: \$4,011,128.00

The District adopted GASB 101, compensated absences, which resulted in a beginning of year adjustment.

Amounts Expressed in Whole Dollars

	<u>General Fund</u> <u>(10)</u>	<u>Student Sponsored</u> <u>Activity Fund</u> <u>(21)</u>	<u>Public Purpose Trust</u> <u>(27)</u>	<u>Other Compt Approved</u> <u>(28)</u>	<u>Athletic / Activity</u> <u>(29)</u>
Assets And Deferred Outflows Of Resources					
Assets					
0100 Cash and Cash Equivalents	9,440,294				
0110 Investments	30,824,795				
0120 Taxes Receivable	4,738,799				
0130 Due From Other Funds	64,954				
0141 Due From Other Governments					
0142 State Revenue Receivable	8,565,396				
0143 Federal Revenue Receivable	2,167,825				
0145 Other Intergovernmental Revenue Receivable					
0146 Due from Primary Government					
0147 Due from Component Unit					
0150 Other Receivables	1,134,536				
0170 Inventories	223,352				
0180 Prepaid Expenses (Expenditures)					
0190 Other Current Assets					
Total Assets	\$57,159,951				
0910 Deferred Outflows of Resources					
Total Assets And Deferred Outflows Of Resources	\$57,159,951				

Amounts Expressed in Whole Dollars

	<u>Capital Reserve (690.</u> <u>1850)</u> <u>(31)</u>	<u>Capital Reserve (1431)</u> <u>(32)</u>	<u>Other Capital Projects</u> <u>Fund</u> <u>(39)</u>	<u>Debt Service</u> <u>(40)</u>	<u>Permanent</u> <u>(90)</u>
Assets And Deferred Outflows Of Resources					
Assets					
0100 Cash and Cash Equivalents		109,375	3,177,544		
0110 Investments		9,275,685	3,861,492		
0120 Taxes Receivable					
0130 Due From Other Funds					
0141 Due From Other Governments					
0142 State Revenue Receivable					
0143 Federal Revenue Receivable					
0145 Other Intergovernmental Revenue Receivable					
0146 Due from Primary Government					
0147 Due from Component Unit					
0150 Other Receivables					
0170 Inventories					
0180 Prepaid Expenses (Expenditures)					
0190 Other Current Assets					
Total Assets		\$9,385,060	\$7,039,036		
0910 Deferred Outflows of Resources					
Total Assets And Deferred Outflows Of Resources		\$9,385,060	\$7,039,036		

Amounts Expressed in Whole Dollars

Total Governmental Funds

Assets And Deferred Outflows Of Resources

Assets	
0100 Cash and Cash Equivalents	12,727,213
0110 Investments	43,961,972
0120 Taxes Receivable	4,738,799
0130 Due From Other Funds	64,954
0141 Due From Other Governments	
0142 State Revenue Receivable	8,565,396
0143 Federal Revenue Receivable	2,167,825
0145 Other Intergovernmental Revenue Receivable	
0146 Due from Primary Government	
0147 Due from Component Unit	
0150 Other Receivables	1,134,536
0170 Inventories	223,352
0180 Prepaid Expenses (Expenditures)	
0190 Other Current Assets	
Total Assets	\$73,584,047
0910 Deferred Outflows of Resources	
Total Assets And Deferred Outflows Of Resources	\$73,584,047

Amounts Expressed in Whole Dollars	<u>General Fund</u> <u>(10)</u>	<u>Student Sponsored</u> <u>Activity Fund</u> <u>(21)</u>	<u>Public Purpose Trust</u> <u>(27)</u>	<u>Other Compt Approved</u> <u>(28)</u>	<u>Athletic / Activity</u> <u>(29)</u>
Liabilities And Deferred Inflows Of Resources And Fund Balances					
Liabilities					
0400 Due to Other Funds	10,834				
0411 Due to Other Governments					
0412 Due to Primary Government					
0413 Due to Component Unit					
0420 Accounts Payable	2,503,628				
0430 Contracts Payable					
0440 Current Portion of Long-Term Debt					
0450 Short-Term Payables					
0461 Accrued Salaries and Benefits	10,819,642				
0462 Payroll Deductions and Withholding	12,780,246				
0480 Unearned Revenues	223,616				
0490 Other Current Liabilities					
Total Liabilities	\$26,337,966				
0950 Deferred Inflows of Resources	929,191				
Fund Balances					
0810 Nonspendable Fund Balance	223,352				
0820 Restricted Fund Balance					
0830 Committed Fund Balance	601,508				
0840 Assigned Fund Balance	13,558,129				
0850 Unassigned Fund Balance	15,509,805				
Total Fund Balances	\$29,892,794				
Total Liabilities, Deferred Inflows Of Resources And Fund Balances	\$57,159,951				

Amounts Expressed in Whole Dollars

<u>Capital Reserve (690.</u>	<u>Capital Reserve (1431)</u>	<u>Other Capital Projects</u>	<u>Debt Service</u>	<u>Permanent</u>
<u>1850)</u>	<u>(32)</u>	<u>Fund</u>	<u>(40)</u>	<u>(90)</u>
<u>(31)</u>		<u>(39)</u>		

Liabilities And Deferred Inflows Of Resources And Fund Balances

Liabilities

0400 Due to Other Funds				
0411 Due to Other Governments				
0412 Due to Primary Government				
0413 Due to Component Unit				
0420 Accounts Payable			1,009,983	
0430 Contracts Payable			21,083	
0440 Current Portion of Long-Term Debt				
0450 Short-Term Payables				
0461 Accrued Salaries and Benefits				
0462 Payroll Deductions and Withholding				
0480 Unearned Revenues				
0490 Other Current Liabilities				

Total Liabilities				\$1,031,066
--------------------------	--	--	--	--------------------

0950 Deferred Inflows of Resources

Fund Balances

0810 Nonspendable Fund Balance				
0820 Restricted Fund Balance			3,550,665	
0830 Committed Fund Balance				
0840 Assigned Fund Balance		9,385,060	2,457,305	
0850 Unassigned Fund Balance				

Total Fund Balances				\$6,007,970
----------------------------	--	--	--	--------------------

Total Liabilities, Deferred Inflows Of Resources And Fund Balances				\$7,039,036
---	--	--	--	--------------------

Amounts Expressed in Whole Dollars

Total Governmental Funds

Liabilities And Deferred Inflows Of Resources And Fund Balances

Liabilities

0400 Due to Other Funds	10,834
0411 Due to Other Governments	
0412 Due to Primary Government	
0413 Due to Component Unit	
0420 Accounts Payable	3,513,611
0430 Contracts Payable	21,083
0440 Current Portion of Long-Term Debt	
0450 Short-Term Payables	
0461 Accrued Salaries and Benefits	10,819,642
0462 Payroll Deductions and Withholding	12,780,246
0480 Unearned Revenues	223,616
0490 Other Current Liabilities	

Total Liabilities \$27,369,032

0950 Deferred Inflows of Resources	929,191
------------------------------------	---------

Fund Balances

0810 Nonspendable Fund Balance	223,352
0820 Restricted Fund Balance	3,550,665
0830 Committed Fund Balance	601,508
0840 Assigned Fund Balance	25,400,494
0850 Unassigned Fund Balance	15,509,805

Total Fund Balances \$45,285,824

Total Liabilities, Deferred Inflows Of Resources And Fund Balances \$73,584,047

Amounts Expressed in Whole Dollars	<u>General Fund</u> <u>(10)</u>	<u>Student Sponsored</u> <u>Activity Fund</u> <u>(21)</u>	<u>Public Purpose Trust</u> <u>(27)</u>	<u>Other Compt Approved</u> <u>(28)</u>	<u>Athletic / Activity</u> <u>(29)</u>
Revenues					
6000 Revenue from Local Sources	152,203,971				
7000 Revenue from State Sources	46,202,206				
8000 Revenue from Federal Sources	1,755,350				
Total Revenues	\$200,161,527				
Expenditures					
1000 Instruction	114,104,498				
2000 Support Services	60,745,305				
3000 Operation of Non-Instructional Services	4,713,832				
4000 Facilities Acquisition, Construction and Improvement Services	58,424				
5110 Debt Service	15,535,851				
5130 Refund of Prior Year Revenues / Receipts	361,942				
5140 Leases and Other Right-to-Use Arrangements	2,279,598				
Total Expenditures	\$197,799,450				
Excess (Deficiency) Of Revenues Over Expenditures	\$2,362,077				
Other Financing Sources (Uses)					
9110 Face Value of Bonds Issued					
9120 Proceeds from Refunding of Bonds					
9130 Bond Premiums					
9200 Proceeds from Extended Term Financing, Leases, and Other Right-to-Use Arrangements	1,208,829				
9300 Interfund Transfers - IN					
9400 Sale of or Compensation for Loss of Fixed Assets	150,848				
9710 Transfers from Component Units					
9720 Transfers from Primary Governments					
9910 Other Financing Sources Not Listed in the 9000 Series					
9990 Insurance Recoveries	34,278				
5120 Debt Service – Refunded Bonds					
5150 Bond Discounts					
5200 Interfund Transfers – Out	2,010,834				
5300 Transfers Out to Component Units/Primary Governments					
Total Other Financing Sources (Uses)	(\$616,879)				

Amounts Expressed in Whole Dollars	<u>Capital Reserve (690.1850)</u> <u>(31)</u>	<u>Capital Reserve (1431)</u> <u>(32)</u>	<u>Other Capital Projects</u> <u>Fund</u> <u>(39)</u>	<u>Debt Service</u> <u>(40)</u>	<u>Permanent</u> <u>(90)</u>
Revenues					
6000 Revenue from Local Sources		421,198	708,002		
7000 Revenue from State Sources					
8000 Revenue from Federal Sources					
Total Revenues		\$421,198	\$708,002		
Expenditures					
1000 Instruction			1,146,164		
2000 Support Services		2,396,534	966,934		
3000 Operation of Non-Instructional Services			2,426		
4000 Facilities Acquisition, Construction and Improvement Services		352,096	1,847,121		
5110 Debt Service					
5130 Refund of Prior Year Revenues / Receipts			125		
5140 Leases and Other Right-to-Use Arrangements					
Total Expenditures		\$2,748,630	\$3,962,770		
Excess (Deficiency) Of Revenues Over Expenditures		(\$2,327,432)	(\$3,254,768)		
Other Financing Sources (Uses)					
9110 Face Value of Bonds Issued					
9120 Proceeds from Refunding of Bonds					
9130 Bond Premiums					
9200 Proceeds from Extended Term Financing, Leases, and Other Right-to-Use Arrangements					
9300 Interfund Transfers - IN		1,250,000	750,000		
9400 Sale of or Compensation for Loss of Fixed Assets					
9710 Transfers from Component Units					
9720 Transfers from Primary Governments					
9910 Other Financing Sources Not Listed in the 9000 Series					
9990 Insurance Recoveries					
5120 Debt Service – Refunded Bonds					
5150 Bond Discounts					
5200 Interfund Transfers – Out					
5300 Transfers Out to Component Units/Primary Governments					
Total Other Financing Sources (Uses)		\$1,250,000	\$750,000		

Amounts Expressed in Whole Dollars	<u>Total Governmental Funds</u>
Revenues	
6000 Revenue from Local Sources	153,333,171
7000 Revenue from State Sources	46,202,206
8000 Revenue from Federal Sources	1,755,350
Total Revenues	\$201,290,727
Expenditures	
1000 Instruction	115,250,662
2000 Support Services	64,108,773
3000 Operation of Non-Instructional Services	4,716,258
4000 Facilities Acquisition, Construction and Improvement Services	2,257,641
5110 Debt Service	15,535,851
5130 Refund of Prior Year Revenues / Receipts	362,067
5140 Leases and Other Right-to-Use Arrangements	2,279,598
Total Expenditures	\$204,510,850
Excess (Deficiency) Of Revenues Over Expenditures	(\$3,220,123)
Other Financing Sources (Uses)	
9110 Face Value of Bonds Issued	
9120 Proceeds from Refunding of Bonds	
9130 Bond Premiums	
9200 Proceeds from Extended Term Financing, Leases, and Other Right-to-Use Arrangements	1,208,829
9300 Interfund Transfers - IN	2,000,000
9400 Sale of or Compensation for Loss of Fixed Assets	150,848
9710 Transfers from Component Units	
9720 Transfers from Primary Governments	
9910 Other Financing Sources Not Listed in the 9000 Series	
9990 Insurance Recoveries	34,278
5120 Debt Service – Refunded Bonds	
5150 Bond Discounts	
5200 Interfund Transfers – Out	2,010,834
5300 Transfers Out to Component Units/Primary Governments	
Total Other Financing Sources (Uses)	\$1,383,121

Amounts Expressed in Whole Dollars	<u>General Fund</u> <u>(10)</u>	<u>Student Sponsored</u> <u>Activity Fund</u> <u>(21)</u>	<u>Public Purpose Trust</u> <u>(27)</u>	<u>Other Compt Approved</u> <u>(28)</u>	<u>Athletic / Activity</u> <u>(29)</u>
Special And Extraordinary Items					
9920 Special Items – Gains					
9930 Extraordinary Items – Gains					
5520 Special Items – Losses					
5530 Extraordinary Items – Losses					
Net Change In Fund Balances	\$1,745,198				
Fund Balance					
0001 Fund Balance - Beginning of Fiscal Year	28,147,596				
Fund Balance - End Of Year	\$29,892,794				

Amounts Expressed in Whole Dollars	<u>Capital Reserve (690.</u> <u>1850)</u> <u>(31)</u>	<u>Capital Reserve (1431)</u> <u>(32)</u>	<u>Other Capital Projects</u> <u>Fund</u> <u>(39)</u>	<u>Debt Service</u> <u>(40)</u>	<u>Permanent</u> <u>(90)</u>
Special And Extraordinary Items					
9920 Special Items – Gains					
9930 Extraordinary Items – Gains					
5520 Special Items – Losses					
5530 Extraordinary Items – Losses					
Net Change In Fund Balances		(\$1,077,432)	(\$2,504,768)		
Fund Balance					
0001 Fund Balance - Beginning of Fiscal Year		10,462,492	8,512,738		
Fund Balance - End Of Year		\$9,385,060	\$6,007,970		

Amounts Expressed in Whole Dollars	<u>Total Governmental Funds</u>
Special And Extraordinary Items	
9920 Special Items – Gains	
9930 Extraordinary Items – Gains	
5520 Special Items – Losses	
5530 Extraordinary Items – Losses	
Net Change In Fund Balances	(\$1,837,002)
Fund Balance	
0001 Fund Balance - Beginning of Fiscal Year	47,122,826
Fund Balance - End Of Year	\$45,285,824

Amounts Expressed in Whole Dollars	<u>Food Service</u> <u>(51)</u>	<u>Child Care</u> <u>Operations</u> <u>(52)</u>	<u>Other Enterprise</u> <u>(58)</u>	<u>TOTAL</u>	<u>Internal Service</u> <u>(60)</u>
Assets And Deferred Outflows Of Resources					
Current Assets					
0100 Cash and Cash Equivalents	1,678,507			1,678,507	
0110 Investments					
0130 Due From Other Funds	10,834			10,834	
0141 Due From Other Governments					
0142 State Revenue Receivable	33,440			33,440	
0143 Federal Revenue Receivable	86,738			86,738	
0146 Due from Primary Government					
0147 Due from Component Unit					
0150 Other Receivables	334			334	
0170 Inventories	49,970			49,970	
0180 Prepaid Expenses (Expenditures)					
0190 Other Current Assets					
Total Current Assets	\$1,859,823			\$1,859,823	
Noncurrent Assets					
0211 Land					
0212 Site Improvements (Net)					
0220 Buildings and Building Improvements (Net)					
0230 Tangible Property and Intangible Right-To-Use Assets (Net)	815,081			815,081	
0250 Construction in Progress					
0260 Long Term Prepayments					
0290 Other Noncurrent Assets					
Total Noncurrent Assets	\$815,081			\$815,081	
0910 Deferred Outflows of Resources					
Total Assets And Deferred Outflows Of Resources	\$2,674,904			\$2,674,904	

Amounts Expressed in Whole Dollars	<u>Food Service</u> <u>(51)</u>	<u>Child Care</u> <u>Operations</u> <u>(52)</u>	<u>Other Enterprise</u> <u>(58)</u>	<u>TOTAL</u>	<u>Internal Service</u> <u>(60)</u>
Liabilities And Deferred Inflows Of Resources And Net Position					
Current Liabilities					
0400 Due to Other Funds	669			669	
0411 Due to Other Governments					
0413 Due to Component Unit					
0420 Accounts Payable	420,368			420,368	
0430 Contracts Payable					
0440 Current Portion of Long-Term Debt					
0450 Short-Term Payables					
0461 Accrued Salaries and Benefits					
0462 Payroll Deductions and Withholding					
0480 Unearned Revenues	194,968			194,968	
0490 Other Current Liabilities					
Total Current Liabilities	\$616,005			\$616,005	
Noncurrent Liabilities					
0510 Bonds Payable					
0520 Extended-Term Financing Agreements Payable					
0530 Lease and Other Right-To-Use Obligations					
0540 Accumulated Compensated Absences					
0550 Authority Lease Obligations					
0560 Other Post-Employment Benefits (OPEB)					
0570 Net Pension Liability					
0599 Other Noncurrent Liabilities					
Total Noncurrent Liabilities					
Total Liabilities	\$616,005			\$616,005	
0950 Deferred Inflows of Resources					
Net Position					
0791 Net Investment in Capital Assets	815,081			815,081	
0008 Restricted Net Position (0792 – 0798)					
0799 Unrestricted Net Position	1,243,818			1,243,818	
Total Net Position	\$2,058,899			\$2,058,899	
Total Liabilities And Deferred Inflows Of Resources And Net Position	\$2,674,904			\$2,674,904	

Amounts Expressed in Whole Dollars	<u>Food Service</u> <u>(51)</u>	<u>Child Care Operations</u> <u>(52)</u>	<u>Other Enterprise</u> <u>(58)</u>	<u>TOTAL</u>	<u>Internal Service</u> <u>(60)</u>
Operating Revenues					
6600 Food Service Revenue	2,862,613			2,862,613	
0071 Charges for Services					
0072 Other Operating Revenue					
Total Operating Revenues	\$2,862,613			\$2,862,613	
Operating Expenses					
100 Personnel Services – Salaries					
200 Personnel Services – Employee Benefits					
300 Purchased Professional and Technical Services	4,967			4,967	
400 Purchased Property Services	68,487			68,487	
500 Other Purchased Services	3,886,149			3,886,149	
600 Supplies	376,208			376,208	
740 Depreciation	128,044			128,044	
770 Amortization Expense					
810 Dues and Fees					
880 Refunds of Prior Years' Receipts					
890 Miscellaneous Expenditures					
Total Operating Expenses	\$4,463,855			\$4,463,855	
Operating Income (Loss)	(\$1,601,242)			(\$1,601,242)	
Non Operating Revenues (Expenses)					
6500 Earnings on Investments	34,512			34,512	
6830 Federal Revenue from Intermediary Sources					
6920 Contributions and Donations from Private Sources					
6930 Gains or Losses on Sale of Fixed Assets					
6991 Refunds of a Prior Year Expenditure					
7000 Revenue from State Sources	250,689			250,689	
8000 Revenue from Federal Sources	962,577			962,577	
9990 Insurance Recoveries					
820 Claims and Judgments Against the LEA					
830 Interest					
TOTAL Non Operating Revenues (Expenses)	\$1,247,778			\$1,247,778	
Income (Loss) Before Contributions And Transfers	(\$353,464)			(\$353,464)	

Amounts Expressed in Whole Dollars	<u>Food Service</u> <u>(51)</u>	<u>Child Care Operations</u> <u>(52)</u>	<u>Other Enterprise</u> <u>(58)</u>	<u>TOTAL</u>	<u>Internal Service</u> <u>(60)</u>
Contributions, Transfers, and Special and Extraordinary Items					
5200 Interfund Transfers – Out					
5300 Transfers Out to Component Units/Primary Governments					
5520 Special Items – Losses					
5530 Extraordinary Items – Losses					
9300 Interfund Transfers - IN	10,834			10,834	
9500 Capital Contributions					
9700 Transfers IN From Component Units/Primary Governments					
9920 Special Items – Gains					
9930 Extraordinary Items – Gains					
Change In Net Position	(\$342,630)			(\$342,630)	
0002 Net Position - Beginning of Fiscal Year	2,401,529			2,401,529	
0003 Accounting Changes / Residual Equity Transfers					
Net Position - End Of Year	\$2,058,899			\$2,058,899	

LEA : 103026852 North Allegheny SD

Printed 10/30/2025 12:53:05 PM

Amounts Expressed in Whole Dollars	<u>Food Service</u> <u>(51)</u>	<u>Child Care Operations</u> <u>(52)</u>	<u>Other Enterprise</u> <u>(58)</u>	<u>TOTAL</u>	<u>Internal Service(60)</u>
Cash Flows From Operating Activities					
0011 Cash Receipts From Users	2,881,427			2,881,427	
0012 Cash Receipts From Assessments Made to Other Funds					
0013 Cash Receipts From Earnings on Investments					
0014 Cash Receipts From Other Operating Revenue					
0015 Cash Payments To Employees For Services					
0016 Cash Payments For Insurance Claims					
0017 Cash Payments To Suppliers For Goods and Services	4,055,894			4,055,894	
0018 Cash Payments For Other Operating Expenses					
Net Cash Provided By (Used For) Operating Activities	(\$1,174,467)			(\$1,174,467)	
Cash Flows From Non-Capital Financing Activities					
0021 Receipts From Local Sources - 6000					
0022 Receipts From State Sources - 7000	243,298			243,298	
0023 Receipts From Federal Sources -8000	654,922			654,922	
0024 Notes and Loans Received (Repaid)					
0025 Interest Paid on Notes/Loans - 5100-830					
0026 Operating Transfers In (Out)/Residual Equity Trans					
0027 Operating Transfers In (Out) Primary Government / Comp Unit	10,834			10,834	
0028 Receipts From Refund of Prior Year Expenditures - 6991					
0029 Special and Extraordinary Gains (losses)					
0030 Receipts from Insurance Recoveries -9990					
Net Cash Prov By (Used for) Non-Capital Financing Activities	\$909,054			\$909,054	
Cash Flows From Capital and Related Financing Activities					
0031 Payments For Fac Acq, Const, and Imp - 4000	(25,033)			(25,033)	
0032 Proceeds from Disposal of Capital Assets					
0033 Proceeds From Extended Term Financing - 9200					
0034 Principal Paid on Financing Agreements					
0035 Interest Paid on Financing Agreements - 5100-830					
0036 (Inc) Dec in Contributed Capital					
Net Cash Prov By (Used for) Capital and Related Financing Activities	(\$25,033)			(\$25,033)	
Cash Flows From Investing Activities					
0041 Earnings on Investments - 6500	34,512			34,512	
0042 Purchase of Inv Securities / Deposits to Inv Pools					
0043 Receipts From Investment Pool Withdrawals					
0044 Proceeds from Sale and Maturity of Inv Securities					

LEA : 103026852 North Allegheny SD

Printed 10/30/2025 12:53:05 PM

0045 Loans Received (Paid)

Net Cash Prov By (Used for) Investing Activities	\$34,512	\$34,512
---	-----------------	-----------------

LEA : 103026852 North Allegheny SD

Printed 10/30/2025 12:53:05 PM

	<u>Food Service</u> <u>(51)</u>	<u>Child Care Operations</u> <u>(52)</u>	<u>Other Enterprise</u> <u>(58)</u>	<u>TOTAL</u>	<u>Internal Service</u> <u>(60)</u>
Net Increase (Decrease) in Cash Flows	(255,934)			(255,934)	
0004 Cash and Cash Equivalents Beginning of Year	1,934,441			1,934,441	
Cash and Cash Equivalents at Year End	\$1,678,507			\$1,678,507	

Reconciliation of Operating Income (Loss) To Net Cash Provided by (Used For) Operating Activities

0005 Operating Income (Loss) per REP	(1,601,242)			(1,601,242)	
Adjustments					
0051 Depreciation and Net Amortization	128,044			128,044	
0052 Provision for Uncollectible Accounts					
0053 Other Adjustments	302,977			302,977	
Effect of Changes in Assets, Liabilities, Deferred Outflows and Deferred Inflows					
0054 (Inc) Dec In Accounts Receivable (0120-0150)	(115)			(115)	
0055 Advances to Other Funds					
0056 (Inc) Dec in Inventories (0170)	36,058			36,058	
0057 (Inc) Dec in Prepaid Expenses (0180)					
0058 (Inc) Dec in Other Current or Noncurrent Assets					
0064 Deferred Outflows (0910)					
0059 Inc (Dec) in Accounts Payable (0400-0450)	(59,118)			(59,118)	
0060 Inc (Dec) in Accrued Salaries/Benefits (0461)					
0065 Inc (Dec) in Net Pension Liabilities (0570)					
0066 Inc (Dec) in Other Postemp Benefit Oblig (0560)					
0061 Inc (Dec) in Payroll Deductions/Withholding (0462)					
0062 Inc (Dec) in Unearned Revenue (0480)	18,929			18,929	
0063 Inc (Dec) in Other Current or Noncurrent Liabilities					
0067 Deferred Inflows (0950)					
Total Adjustments	\$426,775			\$426,775	
Cash Provided By (Used for) Total	(\$1,174,467)			(\$1,174,467)	

COMBINED STATEMENT OF CASH FLOWS
SCHEDULE OF NONCASH INVESTING, CAPITAL, AND FINANCING ACTIVITIES

Explanation of Transaction and Balance Sheet Effect	Amount
The School District received donated commodities of \$302,977 from the US Department of Agriculture	302,977
Total	\$302,977

LEA : 103026852 North Allegheny SD

Printed 10/30/2025 12:53:07 PM

Amounts Expressed in Whole Dollars

Private Purpose Trust
(71)

Investment Trust
(72)

Pension Trust
(73)

Student Activity Custodial
(81)

Assets And Deferred Outflows Of Resources

Assets

0100 Cash and Cash Equivalents				869,248
0110 Investments				
0130 Due From Other Funds				
0140 Due from Other Governments, Primary Government and Component Units				
0150 Other Receivables				
0170 Inventories				
0180 Prepaid Expenses (Expenditures)				
0190 Other Current Assets				
0220 Buildings and Building Improvements (Net)				
0230 Tangible Property and Intangible Right-To-Use Assets (Net)				

Total Assets **\$869,248**

0910 Deferred Outflows of Resources

Total Assets And Deferred Outflows Of Resources **\$869,248**

LEA : 103026852 North Allegheny SD

Printed 10/30/2025 12:53:07 PM

Amounts Expressed in Whole Dollars	<u>Other Custodial</u> <u>(89)</u>	<u>Fiduciary Component Units</u> <u>(98)</u>	<u>Total Fiduciary Funds</u>
Assets And Deferred Outflows Of Resources			
Assets			
0100 Cash and Cash Equivalents			869,248
0110 Investments			
0130 Due From Other Funds			
0140 Due from Other Governments, Primary Government and Component Units			
0150 Other Receivables			
0170 Inventories			
0180 Prepaid Expenses (Expenditures)			
0190 Other Current Assets			
0220 Buildings and Building Improvements (Net)			
0230 Tangible Property and Intangible Right-To-Use Assets (Net)			
Total Assets			\$869,248
0910 Deferred Outflows of Resources			
Total Assets And Deferred Outflows Of Resources			\$869,248

LEA : 103026852 North Allegheny SD

Printed 10/30/2025 12:53:07 PM

Amounts Expressed in Whole Dollars

Private Purpose Trust
(71)

Investment Trust
(72)

Pension Trust
(73)

Student Activity Custodial
(81)

Liabilities, Deferred Inflows Of Resources And Net Position

Liabilities

0400 Due to Other Funds				64,285
0410 Due to Other Governments, Primary Government and Component Units				
0420 Accounts Payable				
0430 Contracts Payable				
0450 Short-Term Payables				
0460 Payroll Accruals and Withholdings				
0480 Unearned Revenues				
0490 Other Current Liabilities				

Total Liabilities				\$64,285
--------------------------	--	--	--	-----------------

0950 Deferred Inflows of Resources

Net Position

0791 Net Investment in Capital Assets				
0009 Restricted Net Position (0792 – 0798)				804,963
0799 Unrestricted Net Position				

Total Net Position				\$804,963
---------------------------	--	--	--	------------------

Total Liabilities, Deferred Inflows Of Resources And Net Position				\$869,248
--	--	--	--	------------------

LEA : 103026852 North Allegheny SD

Printed 10/30/2025 12:53:07 PM

Amounts Expressed in Whole Dollars

Other Custodial
(89)

Fiduciary Component Units
(98)

Total Fiduciary Funds

Liabilities, Deferred Inflows Of Resources And Net Position

Liabilities

0400 Due to Other Funds			64,285
0410 Due to Other Governments, Primary Government and Component Units			
0420 Accounts Payable			
0430 Contracts Payable			
0450 Short-Term Payables			
0460 Payroll Accruals and Withholdings			
0480 Unearned Revenues			
0490 Other Current Liabilities			

Total Liabilities **\$64,285**

0950 Deferred Inflows of Resources

Net Position

0791 Net Investment in Capital Assets			
0009 Restricted Net Position (0792 – 0798)			804,963
0799 Unrestricted Net Position			

Total Net Position **\$804,963**

Total Liabilities, Deferred Inflows Of Resources And Net Position **\$869,248**

Amounts Expressed in Whole Dollars	<u>Private Purpose Trust</u> (71)	<u>Investment Trust</u> (72)	<u>Pension Trust</u> (73)	<u>Student Activity</u> <u>Custodial</u> (81)	<u>Other Custodial</u> (89)	<u>Fiduciary Component</u> <u>Units</u> (98)
Additions						
0091 Gifts and Contributions						
0095 Net Investment Earnings						
0092 Other Additions				1,583,827		
Deductions						
0093 Scholarships Awarded						
0094 Other Deductions				1,574,520		
Change In Net Position				\$9,307		
0006 Net Position – Beginning of Fiscal Year				795,656		
0007 Net Position Held in Trust for Pension Benefits						
Net Position - End of Fiscal Year				\$804,963		

Amounts Expressed in Whole Dollars	<u>Total Fiduciary Funds</u>
Additions	
0091 Gifts and Contributions	
0095 Net Investment Earnings	
0092 Other Additions	1,583,827
Deductions	
0093 Scholarships Awarded	
0094 Other Deductions	1,574,520
Change in Net Position	\$9,307
0006 Net Position – Beginning of Fiscal Year	795,656
0007 Net Position Held in Trust for Pension Benefits	
Net Position - End of Fiscal Year	\$804,963

	<u>Revenue Reported In Current Year</u>	<u>Current Year Tax Accrual</u>	<u>Prior Year Tax Accrual</u>	<u>Taxes Collected In Current Year</u>
<u>Revenue from Local Sources</u>				
6111 Current Real Estate Taxes	122,585,586.85	370,525.44	374,388.46	122,589,449.87
6112 Interim Real Estate Taxes	1,546,315.10	102,395.47	156,773.38	1,600,693.01
6113 Public Utility Realty Taxes	139,239.45			139,239.45
6114 Payments in Lieu of Current Taxes - State / Local	5,232.36			5,232.36
6120 Current Per Capita Taxes, Section 679			473.70	473.70
6141 Current Act 511 Per Capita Taxes			473.70	473.70
6151 Current Act 511 Earned Income Taxes	17,732,559.04			17,732,559.04
6153 Current Act 511 Real Estate Transfer Taxes	2,788,258.20	277,889.92	630,455.87	3,140,824.15
6411 Delinquent Real Estate Taxes	542,659.03	108,075.97	223,172.63	657,755.69
6420 Delinquent Per Capita Taxes, Section 679	1,142.17	89.61	642.69	1,695.25
6440 Delinquent Local Enabling Taxes - Flat Rate Assessments	1,087.11	89.59	643.68	1,641.20
6451 Delinquent Act 511 Earned Income Taxes	493,400.68	20,206.18	20,097.49	493,291.99
6500 Earnings on Investments	3,584,291.11			
6700 Revenues from LEA Activities	589,586.97			
6829 State Revenue Received from Other Sources	1,011.04			
6831 Federal Revenue Received from Other Pennsylvania Public LEAs	4,501.37			
6832 Federal IDEA Revenue Received as Pass Through	1,295,930.94			
6839 Federal Revenue Received from Other Sources	16,220.03			
6910 Rentals	215,836.13			
6920 Contributions and Donations from Private Sources	317,791.40			
6944 Receipts from Other LEAs in Pennsylvania - Education	24,697.85			
6991 Refunds of a Prior Year Expenditure	16,046.93			
6999 Other Revenues Not Specified Above	302,577.41			
TOTAL Revenue from Local Sources	\$152,203,971.17	\$879,272.18	\$1,407,121.60	\$146,363,329.41

**Revenue Reported
In Current Year**

Revenue from State Sources

7111 Basic Education Funding-Formula	13,494,882.79		
7140 Charter Schools	148,790.02		
7160 Tuition for Orphans Subsidy	60,605.67		
7271 Special Education funds for School-Aged Pupils	4,622,841.41		
7311 Pupil Transportation Subsidy	2,372,228.62		
7312 Nonpublic and Charter School Pupil Transportation Subsidy	229,845.00		
7320 Rental and Sinking Fund Payments / Building Reimbursement Subsidy	1,949,754.58		
7331 State Reimbursement for Health Services	158,655.61		
7332 Feminine Hygiene Product Funding	2,167.59		
7340 State Property Tax Reduction Allocation	3,435,477.72		
7362 School Mental Health & Safety and Security Grants	287,626.02		
7369 Other Safe School Grants	4,632.63		
7531 Ready to Learn-Foundation	581,758.00		
7599 Other State Revenue Not Listed Elsewhere in the 7000 Series	70,000.00		
7810 State Share of Social Security and Medicare Taxes	3,340,713.85		
7820 State Share of Retirement Contributions	15,442,226.89		
TOTAL Revenue from State Sources	\$46,202,206.40		

**Revenue Reported
In Current Year**

Revenue from Federal Sources

8514 Title I - Improving the Academic Achievement of the Disadvantaged	268,557.04			
8515 Title II - Preparing, Training, and Recruiting High Quality Teachers and Principals	120,216.69			
8516 Title III - Language Instruction for English Learners and Immigrant Students	11,721.63			
8517 Title IV - 21st Century Schools	17,323.56			
8744 ARP ESSER - Elementary and Secondary School Emergency Relief Fund	25,407.50			
8752 ARP ESSER Summer Programs	2,952.46			
8810 School-Based Access Medicaid Reimbursement Program (SBAP) Reimbursements (Access)	1,281,848.40			
8820 Medical Assistance Reimbursement for Administrative Claiming (Quarterly) Program	27,322.80			
TOTAL Revenue from Federal Sources	\$1,755,350.08			

	Revenue Reported In Current Year			
<u>Other Financing Sources</u>				
9220 Leases and Other Right-to-Use Arrangements	1,208,829.00			
9400 Sale of or Compensation for Loss of Fixed Assets	150,847.92			
9990 Insurance Recoveries	34,278.19			
TOTAL Other Financing Sources	\$1,393,955.11			
TOTAL FROM ALL SOURCES	\$201,555,482.76	\$879,272.18	\$1,407,121.60	\$146,363,329.41

LEA : 103026852 North Allegheny SD

Printed 10/30/2025 12:53:16 PM

	<u>General Fund (10)</u>	<u>Student Sponsored Activity Fund (21)</u>	<u>Public Purpose Trust (27)</u>	<u>Other Compt Approved (28)</u>	<u>Athletic / Activity (29)</u>	<u>Capital Reserve (690, 1850) (31)</u>
6000 Revenue from Local Sources						
6111 Current Real Estate Taxes	122,585,586.85					
6112 Interim Real Estate Taxes	1,546,315.10					
6113 Public Utility Realty Taxes	139,239.45					
6114 Payments in Lieu of Current Taxes - State / Local	5,232.36					
6151 Current Act 511 Earned Income Taxes	17,732,559.04					
6153 Current Act 511 Real Estate Transfer Taxes	2,788,258.20					
6411 Delinquent Real Estate Taxes	542,659.03					
6420 Delinquent Per Capita Taxes, Section 679	1,142.17					
6440 Delinquent Local Enabling Taxes - Flat Rate Assessments	1,087.11					
6451 Delinquent Act 511 Earned Income Taxes	493,400.68					
6500 Earnings on Investments	3,584,291.11					
6700 Revenues from LEA Activities	589,586.97					
6829 State Revenue Received from Other Sources	1,011.04					
6831 Federal Revenue Received from Other Pennsylvania Public LEAs	4,501.37					
6832 Federal IDEA Revenue Received as Pass Through	1,295,930.94					
6839 Federal Revenue Received from Other Sources	16,220.03					
6910 Rentals	215,836.13					
6920 Contributions and Donations from Private Sources	317,791.40					
6944 Receipts from Other LEAs in Pennsylvania - Education	24,697.85					
6991 Refunds of a Prior Year Expenditure	16,046.93					
6999 Other Revenues Not Specified Above	302,577.41					
6000 Total Revenue from Local Sources	\$152,203,971.17					
7000 Revenue from State Sources						
7111 Basic Education Funding-Formula	13,494,882.79					
7140 Charter Schools	148,790.02					
7160 Tuition for Orphans Subsidy	60,605.67					
7271 Special Education funds for School-Aged Pupils	4,622,841.41					
7311 Pupil Transportation Subsidy	2,372,228.62					
7312 Nonpublic and Charter School Pupil Transportation Subsidy	229,845.00					
7320 Rental and Sinking Fund Payments / Building Reimbursement Subsidy	1,949,754.58					
7331 State Reimbursement for Health Services	158,655.61					
7332 Feminine Hygiene Product Funding	2,167.59					
7340 State Property Tax Reduction Allocation	3,435,477.72					
7362 School Mental Health & Safety and Security Grants	287,626.02					
7369 Other Safe School Grants	4,632.63					

LEA : 103026852 North Allegheny SD

Printed 10/30/2025 12:53:16 PM

	<u>Capital Reserve</u> <u>(1431) (32)</u>	<u>Other Capital</u> <u>Projects Fund (39)</u>	<u>Debt Service (40)</u>	<u>Permanent (90)</u>	<u>Total</u>
6000 Revenue from Local Sources					
6111 Current Real Estate Taxes					122,585,586.85
6112 Interim Real Estate Taxes					1,546,315.10
6113 Public Utility Realty Taxes					139,239.45
6114 Payments in Lieu of Current Taxes - State / Local					5,232.36
6151 Current Act 511 Earned Income Taxes					17,732,559.04
6153 Current Act 511 Real Estate Transfer Taxes					2,788,258.20
6411 Delinquent Real Estate Taxes					542,659.03
6420 Delinquent Per Capita Taxes, Section 679					1,142.17
6440 Delinquent Local Enabling Taxes - Flat Rate Assessments					1,087.11
6451 Delinquent Act 511 Earned Income Taxes					493,400.68
6500 Earnings on Investments	421,198.48	191,963.38			4,197,452.97
6700 Revenues from LEA Activities		92,618.70			682,205.67
6829 State Revenue Received from Other Sources					1,011.04
6831 Federal Revenue Received from Other Pennsylvania Public LEAs					4,501.37
6832 Federal IDEA Revenue Received as Pass Through					1,295,930.94
6839 Federal Revenue Received from Other Sources					16,220.03
6910 Rentals					215,836.13
6920 Contributions and Donations from Private Sources					317,791.40
6944 Receipts from Other LEAs in Pennsylvania - Education					24,697.85
6991 Refunds of a Prior Year Expenditure					16,046.93
6999 Other Revenues Not Specified Above		423,420.26			725,997.67
6000 Total Revenue from Local Sources	\$421,198.48	\$708,002.34			\$153,333,171.99
7000 Revenue from State Sources					
7111 Basic Education Funding-Formula					13,494,882.79
7140 Charter Schools					148,790.02
7160 Tuition for Orphans Subsidy					60,605.67
7271 Special Education funds for School-Aged Pupils					4,622,841.41
7311 Pupil Transportation Subsidy					2,372,228.62
7312 Nonpublic and Charter School Pupil Transportation Subsidy					229,845.00
7320 Rental and Sinking Fund Payments / Building Reimbursement Subsidy					1,949,754.58
7331 State Reimbursement for Health Services					158,655.61
7332 Feminine Hygiene Product Funding					2,167.59
7340 State Property Tax Reduction Allocation					3,435,477.72
7362 School Mental Health & Safety and Security Grants					287,626.02
7369 Other Safe School Grants					4,632.63

LEA : 103026852 North Allegheny SD

Printed 10/30/2025 12:53:16 PM

	<u>General Fund (10)</u>	<u>Student Sponsored Activity Fund (21)</u>	<u>Public Purpose Trust (27)</u>	<u>Other Compt Approved (28)</u>	<u>Athletic / Activity (29)</u>	<u>Capital Reserve (690.1850) (31)</u>
7000 Revenue from State Sources						
7531 Ready to Learn-Foundation	581,758.00					
7599 Other State Revenue Not Listed Elsewhere in the 7000 Series	70,000.00					
7810 State Share of Social Security and Medicare Taxes	3,340,713.85					
7820 State Share of Retirement Contributions	15,442,226.89					
7000 Total Revenue from State Sources	\$46,202,206.40					
8000 Revenue from Federal Sources						
8514 Title I - Improving the Academic Achievement of the Disadvantaged	268,557.04					
8515 Title II - Preparing, Training, and Recruiting High Quality Teachers and Principals	120,216.69					
8516 Title III - Language Instruction for English Learners and Immigrant Students	11,721.63					
8517 Title IV - 21st Century Schools	17,323.56					
8744 ARP ESSER - Elementary and Secondary School Emergency Relief Fund	25,407.50					
8752 ARP ESSER Summer Programs	2,952.46					
8810 School-Based Access Medicaid Reimbursement Program (SBAP) Reimbursements (Access)	1,281,848.40					
8820 Medical Assistance Reimbursement for Administrative Claiming (Quarterly) Program	27,322.80					
8000 Total Revenue from Federal Sources	\$1,755,350.08					
9000 Other Financing Sources						
9220 Leases and Other Right-to-Use Arrangements	1,208,829.00					
9310 General Fund Transfers						
9400 Sale of or Compensation for Loss of Fixed Assets	150,847.92					
9990 Insurance Recoveries	34,278.19					
9000 Total Other Financing Sources	\$1,393,955.11					
Total From All Sources	\$201,555,482.76					

LEA : 103026852 North Allegheny SD

Printed 10/30/2025 12:53:16 PM

	<u>Capital Reserve</u> <u>(1431) (32)</u>	<u>Other Capital</u> <u>Projects Fund (39)</u>	<u>Debt Service (40)</u>	<u>Permanent (90)</u>	<u>Total</u>
7000 Revenue from State Sources					
7531 Ready to Learn-Foundation					581,758.00
7599 Other State Revenue Not Listed Elsewhere in the 7000 Series					70,000.00
7810 State Share of Social Security and Medicare Taxes					3,340,713.85
7820 State Share of Retirement Contributions					15,442,226.89
7000 Total Revenue from State Sources					\$46,202,206.40
8000 Revenue from Federal Sources					
8514 Title I - Improving the Academic Achievement of the Disadvantaged					268,557.04
8515 Title II - Preparing, Training, and Recruiting High Quality Teachers and Principals					120,216.69
8516 Title III - Language Instruction for English Learners and Immigrant Students					11,721.63
8517 Title IV - 21st Century Schools					17,323.56
8744 ARP ESSER - Elementary and Secondary School Emergency Relief Fund					25,407.50
8752 ARP ESSER Summer Programs					2,952.46
8810 School-Based Access Medicaid Reimbursement Program (SBAP) Reimbursements (Access)					1,281,848.40
8820 Medical Assistance Reimbursement for Administrative Claiming (Quarterly) Program					27,322.80
8000 Total Revenue from Federal Sources					\$1,755,350.08
9000 Other Financing Sources					
9220 Leases and Other Right-to-Use Arrangements					1,208,829.00
9310 General Fund Transfers	1,250,000.00	750,000.00			2,000,000.00
9400 Sale of or Compensation for Loss of Fixed Assets					150,847.92
9990 Insurance Recoveries					34,278.19
9000 Total Other Financing Sources	\$1,250,000.00	\$750,000.00			\$3,393,955.11
Total From All Sources	\$1,671,198.48	\$1,458,002.34			\$204,684,683.58

	<u>General Fund (10)</u>	<u>Student Sponsored Activity Fund (21)</u>	<u>Public Purpose Trust (27)</u>	<u>Other Compt Approved (28)</u>	<u>Athletic / Activity (29)</u>	<u>Capital Reserve (690. 1850) (31)</u>
Revenue from Local Sources	152,203,971.17					
Revenue from State Sources	46,202,206.40					
Revenue from Federal Sources	1,755,350.08					
Other Financing Sources	1,393,955.11					
Total From All Sources	\$201,555,482.76					

	<u>Capital Reserve (1431)</u> <u>(32)</u>	<u>Other Capital Projects</u> <u>Fund (39)</u>	<u>Debt Service (40)</u>	<u>Permanent (90)</u>	<u>Total</u>
Revenue from Local Sources	421,198.48	708,002.34			153,333,171.99
Revenue from State Sources					46,202,206.40
Revenue from Federal Sources					1,755,350.08
Other Financing Sources	1,250,000.00	750,000.00			3,393,955.11
Total From All Sources	\$1,671,198.48	\$1,458,002.34			\$204,684,683.58

LEA : 103026852 North Allegheny SD

Printed 10/30/2025 12:53:25 PM

General Fund (10)

	<u>Total</u>
1000 Instruction	
100 Personnel Services – Salaries	
120 Professional – Educational	59,420,858.10
130 Professional – Other	432.14
150 Office / Clerical	560.00
170 Operative and Laborer	12,701.65
190 Instructional Assistant	3,936,503.43
Total Personnel Services – Salaries	\$63,371,055.32
200 Personnel Services – Employee Benefits	
210 Group Insurance – Contracted Provider	13,182,030.23
220 Social Security Contributions	4,383,020.19
230 PSERS Retirement Contributions	21,089,146.28
250 Unemployment Compensation	10,189.65
260 Workers’ Compensation	198,862.92
Total Personnel Services – Employee Benefits	\$38,863,249.27
300 Purchased Professional and Technical Services	
322 Professional Educational Services – Ius	296,729.98
323 Professional Educational Services – Other Educational Agencies	878,397.97
329 Professional Educational Services – Other	1,284,093.35
330 Other Professional Services	979,567.28
390 Other Purchased Professional and Technical Services	84,421.26
Total Purchased Professional and Technical Services	\$3,523,209.84
400 Purchased Property Services	
430 Repairs and Maintenance Services	28,521.32
Total Purchased Property Services	\$28,521.32
500 Other Purchased Services	
510 Student Transportation Services	27,019.59
530 Communications	1,890.00
562 Tuition To Pennsylvania Charter Schools	2,343,439.02
563 Tuition To Nonpublic Schools	866,359.27
564 Tuition To Career and Technology Centers	1,238,346.72
567 Tuition To Approved Private Schools (APS) and PA Chartered Schools for the Deaf and Blind	665,102.36
568 Tuition To Private Residential Rehabilitative Institutions (PRRI) [In-State] and Detention Centers	117,574.09
580 Travel	26,384.85
Total Other Purchased Services	\$5,286,115.90
600 Supplies	
610 General Supplies	853,697.54
640 Books and Periodicals	154,937.24
650 Supplies & Fees – Technology Related	792,091.86
Total Supplies	\$1,800,726.64
700 Property	
736 Technology Equipment Lease	1,208,829.00
762 Capitalized Equipment - Replacement	4,509.50
Total Property	\$1,213,338.50

LEA : 103026852 North Allegheny SD

Printed 10/30/2025 12:53:25 PM

General Fund (10)

1000 Instruction	<u>Total</u>
800 Other Objects	
810 Dues and Fees	11,521.00
890 Miscellaneous Expenditures	6,760.00
Total Other Objects	\$18,281.00
Total 1000 Instruction	\$114,104,497.79

LEA : 103026852 North Allegheny SD

Printed 10/30/2025 12:53:25 PM

General Fund (10)

1100 Regular Programs – Elementary / Secondary

	<u>Elementary</u>	<u>Secondary</u>	<u>Federal</u>	<u>Total</u>
100 Personnel Services – Salaries				
120 Professional – Educational	25,587,419.81	25,249,104.44	232,292.65	51,068,816.90
150 Office / Clerical			560.00	560.00
170 Operative and Laborer	9,206.75	604.60		9,811.35
190 Instructional Assistant	661,005.27	29,294.42	40,445.90	730,745.59
Total Personnel Services – Salaries	\$26,257,631.83	\$25,279,003.46	\$273,298.55	\$51,809,933.84
200 Personnel Services – Employee Benefits				
210 Group Insurance – Contracted Provider	5,410,872.23	5,286,346.28	28,827.24	10,726,045.75
220 Social Security Contributions	1,770,616.77	1,807,772.55	21,089.40	3,599,478.72
230 PSERS Retirement Contributions	8,579,893.04	8,577,987.64		17,157,880.68
250 Unemployment Compensation	4,163.27	4,209.24		8,372.51
260 Workers’ Compensation	81,279.48	82,035.15		163,314.63
Total Personnel Services – Employee Benefits	\$15,846,824.79	\$15,758,350.86	\$49,916.64	\$31,655,092.29
300 Purchased Professional and Technical Services				
322 Professional Educational Services – Ius	1,224.67	1,099.63	20,337.19	22,661.49
329 Professional Educational Services – Other	6,366.27	5,379.04	4,295.74	16,041.05
330 Other Professional Services	50,000.00	20,000.00	5,000.00	75,000.00
390 Other Purchased Professional and Technical Services	84,318.21	103.05		84,421.26
Total Purchased Professional and Technical Services	\$141,909.15	\$26,581.72	\$29,632.93	\$198,123.80
400 Purchased Property Services				
430 Repairs and Maintenance Services	3,091.73	20,084.70		23,176.43
Total Purchased Property Services	\$3,091.73	\$20,084.70		\$23,176.43
500 Other Purchased Services				
510 Student Transportation Services	8,628.27	2,872.12		11,500.39
530 Communications	997.81	892.19		1,890.00
562 Tuition To Pennsylvania Charter Schools	410,848.08	1,276,603.27		1,687,451.35
563 Tuition To Nonpublic Schools	1,050.00	24,351.00		25,401.00
580 Travel	7,735.26	12,516.45		20,251.71
Total Other Purchased Services	\$429,259.42	\$1,317,235.03		\$1,746,494.45
600 Supplies				
610 General Supplies	317,654.89	375,214.41	51,819.89	744,689.19
640 Books and Periodicals	20,284.70	91,627.41	2,278.43	114,190.54
650 Supplies & Fees – Technology Related	322,743.83	406,342.34	24,038.17	753,124.34
Total Supplies	\$660,683.42	\$873,184.16	\$78,136.49	\$1,612,004.07
700 Property				
736 Technology Equipment Lease	638,261.71	570,567.29		1,208,829.00
762 Capitalized Equipment - Replacement	1,516.54	2,992.96		4,509.50
Total Property	\$639,778.25	\$573,560.25		\$1,213,338.50
800 Other Objects				
810 Dues and Fees	3,209.85	7,271.15	100.00	10,581.00
890 Miscellaneous Expenditures	955.48	5,684.52		6,640.00

LEA : 103026852 North Allegheny SD

Printed 10/30/2025 12:53:25 PM

General Fund (10)

1100 Regular Programs – Elementary / Secondary

	<u>Elementary</u>	<u>Secondary</u>	<u>Federal</u>	<u>Total</u>
Total Other Objects	\$4,165.33	\$12,955.67	\$100.00	\$17,221.00
Total 1100 Regular Programs – Elementary / Secondary	\$43,983,343.92	\$43,860,955.85	\$431,084.61	\$88,275,384.38

General Fund (10)

1110 Regular Programs

	<u>Elementary</u>	<u>Secondary</u>	<u>Federal</u>	<u>Total</u>
100 Personnel Services – Salaries				
120 Professional – Educational	25,587,419.81	25,249,104.44	47,687.64	50,884,211.89
170 Operative and Laborer	9,206.75	604.60		9,811.35
190 Instructional Assistant	661,005.27	29,294.42		690,299.69
Total Personnel Services – Salaries	\$26,257,631.83	\$25,279,003.46	\$47,687.64	\$51,584,322.93
200 Personnel Services – Employee Benefits				
210 Group Insurance – Contracted Provider	5,410,872.23	5,286,346.28	5,463.45	10,702,681.96
220 Social Security Contributions	1,770,616.77	1,807,772.55	3,648.06	3,582,037.38
230 PSERS Retirement Contributions	8,579,893.04	8,577,987.64		17,157,880.68
250 Unemployment Compensation	4,163.27	4,209.24		8,372.51
260 Workers’ Compensation	81,279.48	82,035.15		163,314.63
Total Personnel Services – Employee Benefits	\$15,846,824.79	\$15,758,350.86	\$9,111.51	\$31,614,287.16
300 Purchased Professional and Technical Services				
322 Professional Educational Services – Ius	1,224.67	1,099.63		2,324.30
329 Professional Educational Services – Other	6,366.27	5,379.04		11,745.31
330 Other Professional Services	50,000.00	20,000.00	5,000.00	75,000.00
390 Other Purchased Professional and Technical Services	84,318.21	103.05		84,421.26
Total Purchased Professional and Technical Services	\$141,909.15	\$26,581.72	\$5,000.00	\$173,490.87
400 Purchased Property Services				
430 Repairs and Maintenance Services	3,091.73	20,084.70		23,176.43
Total Purchased Property Services	\$3,091.73	\$20,084.70		\$23,176.43
500 Other Purchased Services				
510 Student Transportation Services	8,628.27	2,872.12		11,500.39
530 Communications	997.81	892.19		1,890.00
562 Tuition To Pennsylvania Charter Schools	410,848.08	1,276,603.27		1,687,451.35
563 Tuition To Nonpublic Schools	1,050.00	24,351.00		25,401.00
580 Travel	7,735.26	12,516.45		20,251.71
Total Other Purchased Services	\$429,259.42	\$1,317,235.03		\$1,746,494.45
600 Supplies				
610 General Supplies	317,654.89	375,214.41		692,869.30
640 Books and Periodicals	20,284.70	91,627.41		111,912.11
650 Supplies & Fees – Technology Related	322,743.83	406,342.34		729,086.17
Total Supplies	\$660,683.42	\$873,184.16		\$1,533,867.58
700 Property				
736 Technology Equipment Lease	638,261.71	570,567.29		1,208,829.00
762 Capitalized Equipment - Replacement	1,516.54	2,992.96		4,509.50
Total Property	\$639,778.25	\$573,560.25		\$1,213,338.50
800 Other Objects				
810 Dues and Fees	3,209.85	7,271.15		10,481.00
890 Miscellaneous Expenditures	955.48	5,684.52		6,640.00
Total Other Objects	\$4,165.33	\$12,955.67		\$17,121.00
Total 1110 Regular Programs	\$43,983,343.92	\$43,860,955.85	\$61,799.15	\$87,906,098.92

LEA : 103026852 North Allegheny SD

Printed 10/30/2025 12:53:25 PM

General Fund (10)

1190 Federally-Funded Regular Programs

	<u>Elementary</u>	<u>Secondary</u>	<u>Federal</u>	<u>Total</u>
100 Personnel Services – Salaries				
120 Professional – Educational			184,605.01	184,605.01
150 Office / Clerical			560.00	560.00
190 Instructional Assistant			40,445.90	40,445.90
Total Personnel Services – Salaries			\$225,610.91	\$225,610.91
200 Personnel Services – Employee Benefits				
210 Group Insurance – Contracted Provider			23,363.79	23,363.79
220 Social Security Contributions			17,441.34	17,441.34
Total Personnel Services – Employee Benefits			\$40,805.13	\$40,805.13
300 Purchased Professional and Technical Services				
322 Professional Educational Services – Ius			20,337.19	20,337.19
329 Professional Educational Services – Other			4,295.74	4,295.74
Total Purchased Professional and Technical Services			\$24,632.93	\$24,632.93
600 Supplies				
610 General Supplies			51,819.89	51,819.89
640 Books and Periodicals			2,278.43	2,278.43
650 Supplies & Fees – Technology Related			24,038.17	24,038.17
Total Supplies			\$78,136.49	\$78,136.49
800 Other Objects				
810 Dues and Fees			100.00	100.00
Total Other Objects			\$100.00	\$100.00
Total 1190 Federally-Funded Regular Programs			\$369,285.46	\$369,285.46

LEA : 103026852 North Allegheny SD

Printed 10/30/2025 12:53:25 PM

General Fund (10)

1200 Special Programs – Elementary / Secondary

	<u>Elementary</u>	<u>Secondary</u>	<u>Federal</u>	<u>Total</u>
100 Personnel Services – Salaries				
120 Professional – Educational	3,781,258.40	3,950,192.44	616,379.76	8,347,830.60
130 Professional – Other	228.13	204.01		432.14
170 Operative and Laborer	1,525.87	1,364.43		2,890.30
190 Instructional Assistant	1,889,171.53	1,145,893.09	170,693.22	3,205,757.84
Total Personnel Services – Salaries	\$5,672,183.93	\$5,097,653.97	\$787,072.98	\$11,556,910.88
200 Personnel Services – Employee Benefits				
210 Group Insurance – Contracted Provider	1,228,674.97	1,066,704.34	160,605.17	2,455,984.48
220 Social Security Contributions	384,381.90	354,869.48	43,983.35	783,234.73
230 PSERS Retirement Contributions	1,971,469.31	1,760,948.13	197,656.70	3,930,074.14
250 Unemployment Compensation	896.09	827.27	93.78	1,817.14
260 Workers’ Compensation	17,431.72	16,093.63	1,995.48	35,520.83
Total Personnel Services – Employee Benefits	\$3,602,853.99	\$3,199,442.85	\$404,334.48	\$7,206,631.32
300 Purchased Professional and Technical Services				
322 Professional Educational Services – Ius	71,627.20	8,715.68	193,725.61	274,068.49
323 Professional Educational Services – Other Educational Agencies	463,738.45	414,659.52		878,397.97
329 Professional Educational Services – Other	247,725.28	221,507.69	798,819.33	1,268,052.30
330 Other Professional Services	274,922.48	245,826.54	383,818.26	904,567.28
Total Purchased Professional and Technical Services	\$1,058,013.41	\$890,709.43	\$1,376,363.20	\$3,325,086.04
400 Purchased Property Services				
430 Repairs and Maintenance Services			5,344.89	5,344.89
Total Purchased Property Services			\$5,344.89	\$5,344.89
500 Other Purchased Services				
510 Student Transportation Services	7,690.56	6,876.64	952.00	15,519.20
562 Tuition To Pennsylvania Charter Schools	345,639.90	310,347.77		655,987.67
563 Tuition To Nonpublic Schools	443,100.91	397,857.36		840,958.27
567 Tuition To Approved Private Schools (APS) and PA Chartered Schools for the Deaf and Blind	350,442.43	314,659.93		665,102.36
568 Tuition To Private Residential Rehabilitative Institutions (PRRI) [In-State] and Detention Centers	60,240.58	54,089.61		114,330.19
580 Travel	2,098.48	3,099.41	935.25	6,133.14
Total Other Purchased Services	\$1,209,212.86	\$1,086,930.72	\$1,887.25	\$2,298,030.83
600 Supplies				
610 General Supplies	6,176.53	6,586.38	93,493.51	106,256.42
640 Books and Periodicals	52.63	47.06	40,647.01	40,746.70
650 Supplies & Fees – Technology Related			38,967.52	38,967.52
Total Supplies	\$6,229.16	\$6,633.44	\$173,108.04	\$185,970.64
800 Other Objects				
810 Dues and Fees			940.00	940.00
890 Miscellaneous Expenditures	63.36	56.64		120.00
Total Other Objects	\$63.36	\$56.64	\$940.00	\$1,060.00
Total 1200 Special Programs – Elementary / Secondary	\$11,548,556.71	\$10,281,427.05	\$2,749,050.84	\$24,579,034.60

LEA : 103026852 North Allegheny SD

Printed 10/30/2025 12:53:25 PM

General Fund (10)

1210 Life Skills Support

	<u>Elementary</u>	<u>Secondary</u>	<u>Federal</u>	<u>Total</u>
100 Personnel Services – Salaries				
120 Professional – Educational	85,941.40	221,524.00	52,827.48	360,292.88
170 Operative and Laborer	146.04	130.58		276.62
190 Instructional Assistant	277,520.07	139,365.50	56,496.44	473,382.01
Total Personnel Services – Salaries	\$363,607.51	\$361,020.08	\$109,323.92	\$833,951.51
200 Personnel Services – Employee Benefits				
210 Group Insurance – Contracted Provider	78,794.22	76,389.41	58,987.24	214,170.87
220 Social Security Contributions	28,644.23	28,605.54	8,186.44	65,436.21
230 PSERS Retirement Contributions	127,675.86	126,030.81	39,456.03	293,162.70
250 Unemployment Compensation	66.65	66.55	19.06	152.26
260 Workers’ Compensation	1,299.51	1,297.81	371.41	2,968.73
Total Personnel Services – Employee Benefits	\$236,480.47	\$232,390.12	\$107,020.18	\$575,890.77
400 Purchased Property Services				
430 Repairs and Maintenance Services			4,419.73	4,419.73
Total Purchased Property Services			\$4,419.73	\$4,419.73
500 Other Purchased Services				
510 Student Transportation Services	3,397.80	3,038.20	952.00	7,388.00
580 Travel	128.80	992.98		1,121.78
Total Other Purchased Services	\$3,526.60	\$4,031.18	\$952.00	\$8,509.78
600 Supplies				
610 General Supplies	68.00	134.21	1,380.43	1,582.64
640 Books and Periodicals	0.36	0.33		0.69
Total Supplies	\$68.36	\$134.54	\$1,380.43	\$1,583.33
Total 1210 Life Skills Support	\$603,682.94	\$597,575.92	\$223,096.26	\$1,424,355.12

General Fund (10)

1220 Sensory Support

	<u>Elementary</u>	<u>Secondary</u>	<u>Federal</u>	<u>Total</u>
100 Personnel Services – Salaries				
120 Professional – Educational	931,687.47	238,941.74	153,713.22	1,324,342.43
190 Instructional Assistant	46,020.52			46,020.52
Total Personnel Services – Salaries	\$977,707.99	\$238,941.74	\$153,713.22	\$1,370,362.95
200 Personnel Services – Employee Benefits				
210 Group Insurance – Contracted Provider	204,518.52	48,549.08	18,464.63	271,532.23
220 Social Security Contributions	68,720.97	16,907.67	8,449.05	94,077.69
230 PSERS Retirement Contributions	339,048.81	82,229.27	41,067.57	462,345.65
250 Unemployment Compensation	159.78	39.21	19.66	218.65
260 Workers' Compensation	3,117.79	767.09	383.32	4,268.20
Total Personnel Services – Employee Benefits	\$615,565.87	\$148,492.32	\$68,384.23	\$832,442.42
300 Purchased Professional and Technical Services				
322 Professional Educational Services – Ius	9,706.82	8,715.68	79,866.25	98,288.75
Total Purchased Professional and Technical Services	\$9,706.82	\$8,715.68	\$79,866.25	\$98,288.75
400 Purchased Property Services				
430 Repairs and Maintenance Services			874.98	874.98
Total Purchased Property Services			\$874.98	\$874.98
500 Other Purchased Services				
580 Travel	980.16	935.78		1,915.94
Total Other Purchased Services	\$980.16	\$935.78		\$1,915.94
600 Supplies				
610 General Supplies	3,336.49	2,983.40	10,227.56	16,547.45
Total Supplies	\$3,336.49	\$2,983.40	\$10,227.56	\$16,547.45
Total 1220 Sensory Support	\$1,607,297.33	\$400,068.92	\$313,066.24	\$2,320,432.49

LEA : 103026852 North Allegheny SD

Printed 10/30/2025 12:53:25 PM

General Fund (10)

1230 Emotional Support

	<u>Elementary</u>	<u>Secondary</u>	<u>Federal</u>	<u>Total</u>
100 Personnel Services – Salaries				
120 Professional – Educational	244,489.30	706,140.73	176,035.76	1,126,665.79
190 Instructional Assistant	518,783.95	279,542.01		798,325.96
Total Personnel Services – Salaries	\$763,273.25	\$985,682.74	\$176,035.76	\$1,924,991.75
200 Personnel Services – Employee Benefits				
210 Group Insurance – Contracted Provider	163,995.54	211,727.21	41,720.86	417,443.61
220 Social Security Contributions	49,447.72	68,841.91	17,186.18	135,475.81
230 PSERS Retirement Contributions	269,933.15	344,125.71	82,831.97	696,890.83
250 Unemployment Compensation	115.07	160.23	39.99	315.29
260 Workers' Compensation	2,243.40	3,123.28	779.72	6,146.40
Total Personnel Services – Employee Benefits	\$485,734.88	\$627,978.34	\$142,558.72	\$1,256,271.94
300 Purchased Professional and Technical Services				
322 Professional Educational Services – Ius			1,431.71	1,431.71
Total Purchased Professional and Technical Services			\$1,431.71	\$1,431.71
500 Other Purchased Services				
580 Travel		470.34		470.34
Total Other Purchased Services		\$470.34		\$470.34
600 Supplies				
610 General Supplies	221.49	313.61	15,899.14	16,434.24
640 Books and Periodicals			517.32	517.32
Total Supplies	\$221.49	\$313.61	\$16,416.46	\$16,951.56
Total 1230 Emotional Support	\$1,249,229.62	\$1,614,445.03	\$336,442.65	\$3,200,117.30

General Fund (10)

1240 Academic Support

	<u>Elementary</u>	<u>Secondary</u>	<u>Federal</u>	<u>Total</u>
100 Personnel Services – Salaries				
120 Professional – Educational	2,341,839.38	2,625,049.45	160,340.44	5,127,229.27
130 Professional – Other	228.13	204.01		432.14
170 Operative and Laborer	1,379.83	1,233.85		2,613.68
190 Instructional Assistant	998,726.56	683,957.89	95,196.71	1,777,881.16
Total Personnel Services – Salaries	\$3,342,173.90	\$3,310,445.20	\$255,537.15	\$6,908,156.25
200 Personnel Services – Employee Benefits				
210 Group Insurance – Contracted Provider	744,939.16	697,466.39	41,432.44	1,483,837.99
220 Social Security Contributions	223,676.55	228,092.19	6,480.70	458,249.44
230 PSERS Retirement Contributions	1,158,042.32	1,139,917.80	34,301.13	2,332,261.25
250 Unemployment Compensation	520.48	530.78	15.07	1,066.33
260 Workers’ Compensation	10,147.89	10,348.26	294.02	20,790.17
Total Personnel Services – Employee Benefits	\$2,137,326.40	\$2,076,355.42	\$82,523.36	\$4,296,205.18
300 Purchased Professional and Technical Services				
322 Professional Educational Services – Ius			107,909.65	107,909.65
329 Professional Educational Services – Other	18,570.18	16,604.82		35,175.00
Total Purchased Professional and Technical Services	\$18,570.18	\$16,604.82	\$107,909.65	\$143,084.65
500 Other Purchased Services				
510 Student Transportation Services	4,292.76	3,838.44		8,131.20
562 Tuition To Pennsylvania Charter Schools	345,639.90	310,347.77		655,987.67
580 Travel	221.17	195.65		416.82
Total Other Purchased Services	\$350,153.83	\$314,381.86		\$664,535.69
600 Supplies				
610 General Supplies	2,164.10	2,809.61		4,973.71
640 Books and Periodicals	52.27	46.73		99.00
Total Supplies	\$2,216.37	\$2,856.34		\$5,072.71
800 Other Objects				
890 Miscellaneous Expenditures	63.36	56.64		120.00
Total Other Objects	\$63.36	\$56.64		\$120.00
Total 1240 Academic Support	\$5,850,504.04	\$5,720,700.28	\$445,970.16	\$12,017,174.48

LEA : 103026852 North Allegheny SD

Printed 10/30/2025 12:53:25 PM

General Fund (10)

	<u>Elementary</u>	<u>Secondary</u>	<u>Federal</u>	<u>Total</u>
1241 Learning Support – Public				
100 Personnel Services – Salaries				
120 Professional – Educational	1,529,697.31	1,622,638.29	160,340.44	3,312,676.04
190 Instructional Assistant	998,726.56	683,957.89	95,196.71	1,777,881.16
Total Personnel Services – Salaries	\$2,528,423.87	\$2,306,596.18	\$255,537.15	\$5,090,557.20
200 Personnel Services – Employee Benefits				
210 Group Insurance – Contracted Provider	554,340.17	485,835.94	41,432.44	1,081,608.55
220 Social Security Contributions	177,787.26	162,572.37	6,480.70	346,840.33
230 PSERS Retirement Contributions	883,673.67	799,373.92	34,301.13	1,717,348.72
250 Unemployment Compensation	413.69	378.30	15.07	807.06
260 Workers' Compensation	8,065.97	7,375.68	294.02	15,735.67
Total Personnel Services – Employee Benefits	\$1,624,280.76	\$1,455,536.21	\$82,523.36	\$3,162,340.33
300 Purchased Professional and Technical Services				
322 Professional Educational Services – Ius			107,909.65	107,909.65
Total Purchased Professional and Technical Services			\$107,909.65	\$107,909.65
500 Other Purchased Services				
562 Tuition To Pennsylvania Charter Schools	345,639.90	310,347.77		655,987.67
580 Travel		101.47		101.47
Total Other Purchased Services	\$345,639.90	\$310,449.24		\$656,089.14
600 Supplies				
610 General Supplies		72.18		72.18
Total Supplies		\$72.18		\$72.18
Total 1241 Learning Support – Public	\$4,498,344.53	\$4,072,653.81	\$445,970.16	\$9,016,968.50

LEA : 103026852 North Allegheny SD

Printed 10/30/2025 12:53:25 PM

General Fund (10)

1243 Gifted Support

	<u>Elementary</u>	<u>Secondary</u>	<u>Federal</u>	<u>Total</u>
100 Personnel Services – Salaries				
120 Professional – Educational	812,142.07	1,002,411.16		1,814,553.23
130 Professional – Other	228.13	204.01		432.14
170 Operative and Laborer	1,379.83	1,233.85		2,613.68
Total Personnel Services – Salaries	\$813,750.03	\$1,003,849.02		\$1,817,599.05
200 Personnel Services – Employee Benefits				
210 Group Insurance – Contracted Provider	190,598.99	211,630.45		402,229.44
220 Social Security Contributions	45,889.29	65,519.82		111,409.11
230 PSERS Retirement Contributions	274,368.65	340,543.88		614,912.53
250 Unemployment Compensation	106.79	152.48		259.27
260 Workers’ Compensation	2,081.92	2,972.58		5,054.50
Total Personnel Services – Employee Benefits	\$513,045.64	\$620,819.21		\$1,133,864.85
300 Purchased Professional and Technical Services				
329 Professional Educational Services – Other	18,570.18	16,604.82		35,175.00
Total Purchased Professional and Technical Services	\$18,570.18	\$16,604.82		\$35,175.00
500 Other Purchased Services				
510 Student Transportation Services	4,292.76	3,838.44		8,131.20
580 Travel	221.17	94.18		315.35
Total Other Purchased Services	\$4,513.93	\$3,932.62		\$8,446.55
600 Supplies				
610 General Supplies	2,164.10	2,737.43		4,901.53
640 Books and Periodicals	52.27	46.73		99.00
Total Supplies	\$2,216.37	\$2,784.16		\$5,000.53
800 Other Objects				
890 Miscellaneous Expenditures	63.36	56.64		120.00
Total Other Objects	\$63.36	\$56.64		\$120.00
Total 1243 Gifted Support	\$1,352,159.51	\$1,648,046.47		\$3,000,205.98

LEA : 103026852 North Allegheny SD

Printed 10/30/2025 12:53:25 PM

General Fund (10)

1280 Early Intervention Support

300 Purchased Professional and Technical Services

322 Professional Educational Services – lus

Total Purchased Professional and Technical Services

Total 1280 Early Intervention Support

Elementary

Secondary

Federal

Total

61,920.38

61,920.38

\$61,920.38

\$61,920.38

\$61,920.38

\$61,920.38

General Fund (10)

1290 Special Programs - Other Support

	<u>Elementary</u>	<u>Secondary</u>	<u>Federal</u>	<u>Total</u>
100 Personnel Services – Salaries				
120 Professional – Educational	177,300.85	158,536.52	73,462.86	409,300.23
190 Instructional Assistant	48,120.43	43,027.69	19,000.07	110,148.19
Total Personnel Services – Salaries	\$225,421.28	\$201,564.21	\$92,462.93	\$519,448.42
200 Personnel Services – Employee Benefits				
210 Group Insurance – Contracted Provider	36,427.53	32,572.25		68,999.78
220 Social Security Contributions	13,892.43	12,422.17	3,680.98	29,995.58
230 PSERS Retirement Contributions	76,769.17	68,644.54		145,413.71
250 Unemployment Compensation	34.11	30.50		64.61
260 Workers' Compensation	623.13	557.19	167.01	1,347.33
Total Personnel Services – Employee Benefits	\$127,746.37	\$114,226.65	\$3,847.99	\$245,821.01
300 Purchased Professional and Technical Services				
322 Professional Educational Services – Ius			4,518.00	4,518.00
323 Professional Educational Services – Other Educational Agencies	463,738.45	414,659.52		878,397.97
329 Professional Educational Services – Other	229,155.10	204,902.87	798,819.33	1,232,877.30
330 Other Professional Services	274,922.48	245,826.54	383,818.26	904,567.28
Total Purchased Professional and Technical Services	\$967,816.03	\$865,388.93	\$1,187,155.59	\$3,020,360.55
400 Purchased Property Services				
430 Repairs and Maintenance Services			50.18	50.18
Total Purchased Property Services			\$50.18	\$50.18
500 Other Purchased Services				
563 Tuition To Nonpublic Schools	443,100.91	397,857.36		840,958.27
567 Tuition To Approved Private Schools (APS) and PA Chartered Schools for the Deaf and Blind	350,442.43	314,659.93		665,102.36
568 Tuition To Private Residential Rehabilitative Institutions (PRRI) [In-State] and Detention Centers	60,240.58	54,089.61		114,330.19
580 Travel	768.35	504.66	935.25	2,208.26
Total Other Purchased Services	\$854,552.27	\$767,111.56	\$935.25	\$1,622,599.08
600 Supplies				
610 General Supplies	386.45	345.55	65,986.38	66,718.38
640 Books and Periodicals			40,129.69	40,129.69
650 Supplies & Fees – Technology Related			38,967.52	38,967.52
Total Supplies	\$386.45	\$345.55	\$145,083.59	\$145,815.59
800 Other Objects				
810 Dues and Fees			940.00	940.00
Total Other Objects			\$940.00	\$940.00
Total 1290 Special Programs - Other Support	\$2,175,922.40	\$1,948,636.90	\$1,430,475.53	\$5,555,034.83

LEA : 103026852 North Allegheny SD

Printed 10/30/2025 12:53:25 PM

General Fund (10)

1300 Vocational Education

500 Other Purchased Services

564 Tuition To Career and Technology Centers

Total Other Purchased Services

Total 1300 Vocational Education

Elementary

Secondary

Federal

Total

1,238,346.72

1,238,346.72

\$1,238,346.72

\$1,238,346.72

\$1,238,346.72

\$1,238,346.72

LEA : 103026852 North Allegheny SD

Printed 10/30/2025 12:53:25 PM

General Fund (10)

	<u>Elementary</u>	<u>Secondary</u>	<u>Federal</u>	<u>Total</u>
1400 Other Instructional Programs – Elementary / Secondary				
100 Personnel Services – Salaries				
120 Professional – Educational	2,116.86	1,892.87	200.87	4,210.60
Total Personnel Services – Salaries	\$2,116.86	\$1,892.87	\$200.87	\$4,210.60
200 Personnel Services – Employee Benefits				
220 Social Security Contributions	161.94	144.80		306.74
230 PSERS Retirement Contributions	629.01	562.45		1,191.46
260 Workers' Compensation	14.51	12.95		27.46
Total Personnel Services – Employee Benefits	\$805.46	\$720.20		\$1,525.66
500 Other Purchased Services				
568 Tuition To Private Residential Rehabilitative Institutions (PRRI) [In-State] and Detention Centers	1,709.21	1,534.69		3,243.90
Total Other Purchased Services	\$1,709.21	\$1,534.69		\$3,243.90
600 Supplies				
610 General Supplies			2,751.93	2,751.93
Total Supplies			\$2,751.93	\$2,751.93
Total 1400 Other Instructional Programs – Elementary / Secondary	\$4,631.53	\$4,147.76	\$2,952.80	\$11,732.09

General Fund (10)

1420 Summer School

100 Personnel Services – Salaries

120 Professional – Educational

Total Personnel Services – Salaries

600 Supplies

610 General Supplies

Total Supplies

Total 1420 Summer School

	<u>Elementary</u>	<u>Secondary</u>	<u>Federal</u>	<u>Total</u>
120 Professional – Educational	289.09	258.51	200.87	748.47
Total Personnel Services – Salaries	\$289.09	\$258.51	\$200.87	\$748.47
610 General Supplies			2,751.93	2,751.93
Total Supplies			\$2,751.93	\$2,751.93
Total 1420 Summer School	\$289.09	\$258.51	\$2,952.80	\$3,500.40

General Fund (10)

	<u>Elementary</u>	<u>Secondary</u>	<u>Federal</u>	<u>Total</u>
1430 Homebound Instruction				
100 Personnel Services – Salaries				
120 Professional – Educational	1,827.77	1,634.36		3,462.13
Total Personnel Services – Salaries	\$1,827.77	\$1,634.36		\$3,462.13
200 Personnel Services – Employee Benefits				
220 Social Security Contributions	161.94	144.80		306.74
230 PSERS Retirement Contributions	629.01	562.45		1,191.46
260 Workers’ Compensation	14.51	12.95		27.46
Total Personnel Services – Employee Benefits	\$805.46	\$720.20		\$1,525.66
Total 1430 Homebound Instruction	\$2,633.23	\$2,354.56		\$4,987.79

General Fund (10)

	<u>Elementary</u>	<u>Secondary</u>	<u>Federal</u>	<u>Total</u>
1440 Alternative Regular Education Programs				
500 Other Purchased Services				
568 Tuition To Private Residential Rehabilitative Institutions (PRRI) [In-State] and Detention Centers	1,709.21	1,534.69		3,243.90
Total Other Purchased Services	\$1,709.21	\$1,534.69		\$3,243.90
Total 1440 Alternative Regular Education Programs	\$1,709.21	\$1,534.69		\$3,243.90

LEA : 103026852 North Allegheny SD

Printed 10/30/2025 12:53:25 PM

General Fund (10)

1441 Adjudicated / Court-Placed Programs

500 Other Purchased Services

568 Tuition To Private Residential Rehabilitative Institutions (PRRI) [In-State] and Detention Centers

Total Other Purchased Services

Total 1441 Adjudicated / Court-Placed Programs

	<u>Elementary</u>	<u>Secondary</u>	<u>Federal</u>	<u>Total</u>
	1,709.21	1,534.69		3,243.90
	\$1,709.21	\$1,534.69		\$3,243.90
	\$1,709.21	\$1,534.69		\$3,243.90

General Fund (10)

2000 Support Services

Total

100 Personnel Services – Salaries

100 Personnel Services – Salaries 26,828,885.32

Total Personnel Services – Salaries \$26,828,885.32

200 Personnel Services – Employee Benefits

210 Group Insurance – Contracted Provider 5,355,260.75

220 Social Security Contributions 2,260,113.78

230 PSERS Retirement Contributions 9,034,993.02

240 Tuition Reimbursement 29,052.00

250 Unemployment Compensation 5,206.16

260 Workers' Compensation 102,534.85

Total Personnel Services – Employee Benefits \$16,787,160.56

300 Purchased Professional and Technical Services

310 Official / Administrative Services 563,757.52

322 Professional Educational Services – Ius 690.00

329 Professional Educational Services – Other 77,769.94

330 Other Professional Services 530,546.73

340 Technical Services 172,952.63

350 Security / Safety Services 234,738.37

360 Employee Training and Development Services 48,165.14

390 Other Purchased Professional and Technical Services 43,425.50

Total Purchased Professional and Technical Services \$1,672,045.83

400 Purchased Property Services

410 Cleaning Services 429,004.71

420 Utility Services 271,214.34

430 Repairs and Maintenance Services 1,071,504.52

440 Rentals 413,039.06

490 Other Purchased Property Services 428.86

Total Purchased Property Services \$2,185,191.49

500 Other Purchased Services

513 Contracted Carriers 6,117,599.46

516 Student Transportation Services From the IU 8,221.26

519 Student Transportation Services From Other Sources (64,350.40)

520 Insurance – General 104,911.71

522 Automotive Liability Insurance 107,567.00

523 General Property and Liability Insurance 273,831.57

524 Other Pupil Transportation Insurance 1,237.50

530 Communications 269,651.60

549 Other Advertising/Public Relations 5,059.60

550 Printing and Binding 14,637.00

580 Travel 79,303.63

591 Services Purchased Locally 9,957.31

595 IU Payments By Withholding 182,207.63

Total Other Purchased Services \$7,109,834.87

LEA : 103026852 North Allegheny SD

Printed 10/30/2025 12:53:41 PM

General Fund (10)

2000 Support Services

Total

600 Supplies

610 General Supplies	1,549,033.57
620 Energy	2,708,092.42
640 Books and Periodicals	71,812.96
650 Supplies & Fees – Technology Related	1,403,811.95

Total Supplies	\$5,732,750.90
-----------------------	-----------------------

700 Property

752 Capital Equipment – Original and Additional	216,955.68
---	------------

Total Property	\$216,955.68
-----------------------	---------------------

800 Other Objects

810 Dues and Fees	182,795.53
820 Claims and Judgments Against the LEA	29,685.00

Total Other Objects	\$212,480.53
----------------------------	---------------------

Total 2000 Support Services	\$60,745,305.18
------------------------------------	------------------------

LEA : 103026852 North Allegheny SD

Printed 10/30/2025 12:53:41 PM

General Fund (10)

2100 Support Services – Students

	<u>Elementary</u>	<u>Secondary</u>	<u>Federal</u>	<u>Total</u>
100 Personnel Services – Salaries				
100 Personnel Services – Salaries	1,649,580.94	2,365,840.31		4,488,104.62
Total Personnel Services – Salaries	\$1,649,580.94	\$2,365,840.31		\$4,488,104.62
200 Personnel Services – Employee Benefits				
210 Group Insurance – Contracted Provider	323,967.38	475,137.41		881,388.81
220 Social Security Contributions	127,046.06	176,885.02		330,919.37
230 PSERS Retirement Contributions	549,243.13	783,900.78		1,461,059.53
250 Unemployment Compensation	295.67	411.01		769.47
260 Workers' Compensation	5,763.91	8,021.63		15,009.96
Total Personnel Services – Employee Benefits	\$1,006,316.15	\$1,444,355.85		\$2,689,147.14
300 Purchased Professional and Technical Services				
329 Professional Educational Services – Other	9,338.73	28,795.71		54,492.44
330 Other Professional Services	17,223.94	15,401.06		32,625.00
Total Purchased Professional and Technical Services	\$26,562.67	\$44,196.77		\$87,117.44
500 Other Purchased Services				
530 Communications	33.63	316.37		350.00
580 Travel	851.18	696.01		1,562.63
Total Other Purchased Services	\$884.81	\$1,012.38		\$1,912.63
600 Supplies				
610 General Supplies	33,760.53	31,275.84		65,297.46
640 Books and Periodicals	1,444.23	1,562.34		3,006.57
Total Supplies	\$35,204.76	\$32,838.18		\$68,304.03
800 Other Objects				
810 Dues and Fees	211.18	188.82		400.00
Total Other Objects	\$211.18	\$188.82		\$400.00
Total 2100 Support Services – Students	\$2,718,760.51	\$3,888,432.31		\$7,334,985.86

LEA : 103026852 North Allegheny SD

Printed 10/30/2025 12:53:41 PM

General Fund (10)

	<u>Elementary</u>	<u>Secondary</u>	<u>Federal</u>	<u>Total</u>
2110 Supervision of Student Services				
100 Personnel Services – Salaries				
100 Personnel Services – Salaries	197,218.71	176,346.46		373,565.17
Total Personnel Services – Salaries	\$197,218.71	\$176,346.46		\$373,565.17
200 Personnel Services – Employee Benefits				
210 Group Insurance – Contracted Provider	40,406.96	36,130.54		76,537.50
220 Social Security Contributions	13,285.24	11,879.21		25,164.45
230 PSERS Retirement Contributions	67,870.77	60,687.77		128,558.54
250 Unemployment Compensation	30.92	27.64		58.56
260 Workers' Compensation	602.75	538.94		1,141.69
Total Personnel Services – Employee Benefits	\$122,196.64	\$109,264.10		\$231,460.74
600 Supplies				
610 General Supplies	651.25	582.35		1,233.60
640 Books and Periodicals	89.06	79.62		168.68
Total Supplies	\$740.31	\$661.97		\$1,402.28
800 Other Objects				
810 Dues and Fees	211.18	188.82		400.00
Total Other Objects	\$211.18	\$188.82		\$400.00
Total 2110 Supervision of Student Services	\$320,366.84	\$286,461.35		\$606,828.19

General Fund (10)

	<u>Elementary</u>	<u>Secondary</u>	<u>Federal</u>	<u>Total</u>
2111 Supervision of Student Services – Head of Component				
100 Personnel Services – Salaries				
100 Personnel Services – Salaries	169,168.93	151,265.26		320,434.19
Total Personnel Services – Salaries	\$169,168.93	\$151,265.26		\$320,434.19
200 Personnel Services – Employee Benefits				
210 Group Insurance – Contracted Provider	34,603.94	30,941.68		65,545.62
220 Social Security Contributions	10,425.75	9,322.36		19,748.11
230 PSERS Retirement Contributions	58,217.72	52,056.35		110,274.07
250 Unemployment Compensation	24.27	21.69		45.96
260 Workers' Compensation	473.02	422.94		895.96
Total Personnel Services – Employee Benefits	\$103,744.70	\$92,765.02		\$196,509.72
600 Supplies				
610 General Supplies	347.99	311.17		659.16
640 Books and Periodicals	89.06	79.62		168.68
Total Supplies	\$437.05	\$390.79		\$827.84
800 Other Objects				
810 Dues and Fees	211.18	188.82		400.00
Total Other Objects	\$211.18	\$188.82		\$400.00
Total 2111 Supervision of Student Services – Head of Component	\$273,561.86	\$244,609.89		\$518,171.75

General Fund (10)

2119 Supervision of Student Services – All Other Supervision

	<u>Elementary</u>	<u>Secondary</u>	<u>Federal</u>	<u>Total</u>
100 Personnel Services – Salaries				
100 Personnel Services – Salaries	28,049.78	25,081.20		53,130.98
Total Personnel Services – Salaries	\$28,049.78	\$25,081.20		\$53,130.98
200 Personnel Services – Employee Benefits				
210 Group Insurance – Contracted Provider	5,803.02	5,188.86		10,991.88
220 Social Security Contributions	2,859.49	2,556.85		5,416.34
230 PSERS Retirement Contributions	9,653.05	8,631.42		18,284.47
250 Unemployment Compensation	6.65	5.95		12.60
260 Workers' Compensation	129.73	116.00		245.73
Total Personnel Services – Employee Benefits	\$18,451.94	\$16,499.08		\$34,951.02
600 Supplies				
610 General Supplies	303.26	271.18		574.44
Total Supplies	\$303.26	\$271.18		\$574.44
Total 2119 Supervision of Student Services – All Other Supervision	\$46,804.98	\$41,851.46		\$88,656.44

LEA : 103026852 North Allegheny SD

Printed 10/30/2025 12:53:41 PM

General Fund (10)

2120 Guidance Services

	<u>Elementary</u>	<u>Secondary</u>	<u>Federal</u>	<u>Total</u>
100 Personnel Services – Salaries				
100 Personnel Services – Salaries	1,172,490.52	1,701,197.04		2,873,687.56
Total Personnel Services – Salaries	\$1,172,490.52	\$1,701,197.04		\$2,873,687.56
200 Personnel Services – Employee Benefits				
210 Group Insurance – Contracted Provider	229,817.63	344,055.79		573,873.42
220 Social Security Contributions	97,041.11	136,513.48		233,554.59
230 PSERS Retirement Contributions	404,318.01	587,262.48		991,580.49
250 Unemployment Compensation	225.83	317.66		543.49
260 Workers' Compensation	4,402.60	6,193.46		10,596.06
Total Personnel Services – Employee Benefits	\$735,805.18	\$1,074,342.87		\$1,810,148.05
300 Purchased Professional and Technical Services				
329 Professional Educational Services – Other	4,044.35	24,061.65		28,106.00
Total Purchased Professional and Technical Services	\$4,044.35	\$24,061.65		\$28,106.00
500 Other Purchased Services				
530 Communications	33.63	316.37		350.00
580 Travel	72.79			72.79
Total Other Purchased Services	\$106.42	\$316.37		\$422.79
600 Supplies				
610 General Supplies	13,350.18	13,025.58		26,375.76
640 Books and Periodicals	1,355.17	1,482.72		2,837.89
Total Supplies	\$14,705.35	\$14,508.30		\$29,213.65
Total 2120 Guidance Services	\$1,927,151.82	\$2,814,426.23		\$4,741,578.05

General Fund (10)

2140 Psychological Services

	<u>Elementary</u>	<u>Secondary</u>	<u>Federal</u>	<u>Total</u>
100 Personnel Services – Salaries				
100 Personnel Services – Salaries	239,742.56	175,514.70		415,257.26
Total Personnel Services – Salaries	\$239,742.56	\$175,514.70		\$415,257.26
200 Personnel Services – Employee Benefits				
210 Group Insurance – Contracted Provider	47,321.06	33,996.71		81,317.77
220 Social Security Contributions	16,719.71	11,689.56		28,409.27
230 PSERS Retirement Contributions	77,054.35	55,527.83		132,582.18
250 Unemployment Compensation	38.92	27.21		66.13
260 Workers' Compensation	758.56	530.32		1,288.88
Total Personnel Services – Employee Benefits	\$141,892.60	\$101,771.63		\$243,664.23
300 Purchased Professional and Technical Services				
330 Other Professional Services	17,223.94	15,401.06		32,625.00
Total Purchased Professional and Technical Services	\$17,223.94	\$15,401.06		\$32,625.00
500 Other Purchased Services				
580 Travel	778.39	696.01		1,474.40
Total Other Purchased Services	\$778.39	\$696.01		\$1,474.40
600 Supplies				
610 General Supplies	19,759.10	17,667.91		37,427.01
Total Supplies	\$19,759.10	\$17,667.91		\$37,427.01
Total 2140 Psychological Services	\$419,396.59	\$311,051.31		\$730,447.90

General Fund (10)

2160 Social Work Services

Elementary Secondary Federal Total

100	<u>Personnel Services – Salaries</u>				
	100 Personnel Services – Salaries				418,942.41
	Total Personnel Services – Salaries				\$418,942.41
200	<u>Personnel Services – Employee Benefits</u>				
	210 Group Insurance – Contracted Provider				71,589.65
	220 Social Security Contributions				22,125.59
	230 PSERS Retirement Contributions				108,236.93
	250 Unemployment Compensation				51.48
	260 Workers' Compensation				1,003.81
	Total Personnel Services – Employee Benefits				\$203,007.46
300	<u>Purchased Professional and Technical Services</u>				
	329 Professional Educational Services – Other				16,358.00
	Total Purchased Professional and Technical Services				\$16,358.00
500	<u>Other Purchased Services</u>				
	580 Travel				15.44
	Total Other Purchased Services				\$15.44
600	<u>Supplies</u>				
	610 General Supplies				261.09
	Total Supplies				\$261.09
	Total 2160 Social Work Services				\$638,584.40

General Fund (10)

2170 Student Accounting Services

Elementary

Secondary

Federal

Total

100 Personnel Services – Salaries

100 Personnel Services – Salaries

53,740.96

Total Personnel Services – Salaries

\$53,740.96

200 Personnel Services – Employee Benefits

210 Group Insurance – Contracted Provider

10,694.37

220 Social Security Contributions

4,862.70

230 PSERS Retirement Contributions

19,678.69

250 Unemployment Compensation

11.31

260 Workers' Compensation

220.61

Total Personnel Services – Employee Benefits

\$35,467.68

Total 2170 Student Accounting Services

\$89,208.64

General Fund (10)

2190 Other Student Services

	<u>Elementary</u>	<u>Secondary</u>	<u>Federal</u>	<u>Total</u>
100 Personnel Services – Salaries				
100 Personnel Services – Salaries	40,129.15	312,782.11		352,911.26
Total Personnel Services – Salaries	\$40,129.15	\$312,782.11		\$352,911.26
200 Personnel Services – Employee Benefits				
210 Group Insurance – Contracted Provider	6,421.73	60,954.37		67,376.10
220 Social Security Contributions		16,802.77		16,802.77
230 PSERS Retirement Contributions		80,422.70		80,422.70
250 Unemployment Compensation		38.50		38.50
260 Workers' Compensation		758.91		758.91
Total Personnel Services – Employee Benefits	\$6,421.73	\$158,977.25		\$165,398.98
300 Purchased Professional and Technical Services				
329 Professional Educational Services – Other	5,294.38	4,734.06		10,028.44
Total Purchased Professional and Technical Services	\$5,294.38	\$4,734.06		\$10,028.44
Total 2190 Other Student Services	\$51,845.26	\$476,493.42		\$528,338.68

General Fund (10)

2200 Support Services – Instructional Staff

	<u>Elementary</u>	<u>Secondary</u>	<u>Federal</u>	<u>Total</u>
100 Personnel Services – Salaries				
100 Personnel Services – Salaries	1,745,448.54	1,121,694.94	4,000.00	2,871,143.48
Total Personnel Services – Salaries	\$1,745,448.54	\$1,121,694.94	\$4,000.00	\$2,871,143.48
200 Personnel Services – Employee Benefits				
210 Group Insurance – Contracted Provider	350,084.27	218,439.36		568,523.63
220 Social Security Contributions	129,313.47	79,926.24		209,239.71
230 PSERS Retirement Contributions	600,497.11	385,034.52		985,531.63
240 Tuition Reimbursement	15,337.62	13,714.38		29,052.00
250 Unemployment Compensation	299.67	184.91		484.58
260 Workers' Compensation	5,866.78	3,626.21		9,492.99
Total Personnel Services – Employee Benefits	\$1,101,398.92	\$700,925.62		\$1,802,324.54
300 Purchased Professional and Technical Services				
329 Professional Educational Services – Other	11,878.57	10,621.43		22,500.00
360 Employee Training and Development Services	5,226.93	8,847.55	3,897.31	17,971.79
Total Purchased Professional and Technical Services	\$17,105.50	\$19,468.98	\$3,897.31	\$40,471.79
400 Purchased Property Services				
430 Repairs and Maintenance Services		1,228.22		1,228.22
Total Purchased Property Services		\$1,228.22		\$1,228.22
500 Other Purchased Services				
580 Travel	5,008.43	10,697.44		15,705.87
Total Other Purchased Services	\$5,008.43	\$10,697.44		\$15,705.87
600 Supplies				
610 General Supplies	10,281.46	16,617.92		26,899.38
640 Books and Periodicals	44,498.83	24,139.90		68,638.73
650 Supplies & Fees – Technology Related	52,632.68	45,590.68		98,223.36
Total Supplies	\$107,412.97	\$86,348.50		\$193,761.47
800 Other Objects				
810 Dues and Fees	180.45	1,073.55		1,254.00
Total Other Objects	\$180.45	\$1,073.55		\$1,254.00
Total 2200 Support Services – Instructional Staff	\$2,976,554.81	\$1,941,437.25	\$7,897.31	\$4,925,889.37

General Fund (10)

2210 Supervision of Educational Media Services	<u>Elementary</u>	<u>Secondary</u>	<u>Federal</u>	<u>Total</u>
100 Personnel Services – Salaries				
100 Personnel Services – Salaries	57,703.51	51,596.59		109,300.10
Total Personnel Services – Salaries	\$57,703.51	\$51,596.59		\$109,300.10
200 Personnel Services – Employee Benefits				
210 Group Insurance – Contracted Provider	11,815.94	10,565.41		22,381.35
230 PSERS Retirement Contributions	19,858.03	17,756.41		37,614.44
Total Personnel Services – Employee Benefits	\$31,673.97	\$28,321.82		\$59,995.79
500 Other Purchased Services				
580 Travel	354.07	316.60		670.67
Total Other Purchased Services	\$354.07	\$316.60		\$670.67
Total 2210 Supervision of Educational Media Services	\$89,731.55	\$80,235.01		\$169,966.56

General Fund (10)

	<u>Elementary</u>	<u>Secondary</u>	<u>Federal</u>	<u>Total</u>
2211 Supervision of Educational Media Services – Head of Component				
100 Personnel Services – Salaries				
100 Personnel Services – Salaries	57,703.51	51,596.59		109,300.10
Total Personnel Services – Salaries	\$57,703.51	\$51,596.59		\$109,300.10
200 Personnel Services – Employee Benefits				
210 Group Insurance – Contracted Provider	11,815.94	10,565.41		22,381.35
230 PSERS Retirement Contributions	19,858.03	17,756.41		37,614.44
Total Personnel Services – Employee Benefits	\$31,673.97	\$28,321.82		\$59,995.79
500 Other Purchased Services				
580 Travel	354.07	316.60		670.67
Total Other Purchased Services	\$354.07	\$316.60		\$670.67
Total 2211 Supervision of Educational Media Services – Head of Component	\$89,731.55	\$80,235.01		\$169,966.56

LEA : 103026852 North Allegheny SD

Printed 10/30/2025 12:53:41 PM

General Fund (10)

2230 Educational Television Services

Elementary

Secondary

Federal

Total

400 Purchased Property Services

430 Repairs and Maintenance Services

1,228.22

1,228.22

Total Purchased Property Services

\$1,228.22

\$1,228.22

600 Supplies

610 General Supplies

12,890.36

12,890.36

Total Supplies

\$12,890.36

\$12,890.36

Total 2230 Educational Television Services

\$14,118.58

\$14,118.58

General Fund (10)

	<u>Elementary</u>	<u>Secondary</u>	<u>Federal</u>	<u>Total</u>
2250 School Library Services				
100 Personnel Services – Salaries				
100 Personnel Services – Salaries	1,138,477.98	552,947.82		1,691,425.80
Total Personnel Services – Salaries	\$1,138,477.98	\$552,947.82		\$1,691,425.80
200 Personnel Services – Employee Benefits				
210 Group Insurance – Contracted Provider	232,737.98	113,512.25		346,250.23
220 Social Security Contributions	74,977.70	28,402.78		103,380.48
230 PSERS Retirement Contributions	393,045.00	190,585.18		583,630.18
250 Unemployment Compensation	172.36	64.23		236.59
260 Workers' Compensation	3,401.68	1,288.65		4,690.33
Total Personnel Services – Employee Benefits	\$704,334.72	\$333,853.09		\$1,038,187.81
500 Other Purchased Services				
580 Travel	40.57			40.57
Total Other Purchased Services	\$40.57			\$40.57
600 Supplies				
610 General Supplies	5,409.57	3,727.56		9,137.13
640 Books and Periodicals	44,498.83	24,139.90		68,638.73
650 Supplies & Fees – Technology Related	52,632.68	45,590.68		98,223.36
Total Supplies	\$102,541.08	\$73,458.14		\$175,999.22
Total 2250 School Library Services	\$1,945,394.35	\$960,259.05		\$2,905,653.40

General Fund (10)

2260 Instruction and Curriculum Development Services

	<u>Elementary</u>	<u>Secondary</u>	<u>Federal</u>	<u>Total</u>
100 Personnel Services – Salaries				
100 Personnel Services – Salaries	537,218.25	506,376.90		1,043,595.15
Total Personnel Services – Salaries	\$537,218.25	\$506,376.90		\$1,043,595.15
200 Personnel Services – Employee Benefits				
210 Group Insurance – Contracted Provider	104,150.24	93,127.65		197,277.89
220 Social Security Contributions	54,264.58	51,459.80		105,724.38
230 PSERS Retirement Contributions	185,848.87	175,132.41		360,981.28
250 Unemployment Compensation	127.14	120.53		247.67
260 Workers' Compensation	2,461.87	2,334.67		4,796.54
Total Personnel Services – Employee Benefits	\$346,852.70	\$322,175.06		\$669,027.76
500 Other Purchased Services				
580 Travel	600.70	537.12		1,137.82
Total Other Purchased Services	\$600.70	\$537.12		\$1,137.82
600 Supplies				
610 General Supplies	4,871.89			4,871.89
Total Supplies	\$4,871.89			\$4,871.89
800 Other Objects				
810 Dues and Fees	31.66	188.34		220.00
Total Other Objects	\$31.66	\$188.34		\$220.00
Total 2260 Instruction and Curriculum Development Services	\$889,575.20	\$829,277.42		\$1,718,852.62

General Fund (10)

2270 Instructional Staff Professional Development Services

	<u>Elementary</u>	<u>Secondary</u>	<u>Federal</u>	<u>Total</u>
100 Personnel Services – Salaries				
100 Personnel Services – Salaries	12,048.80	10,773.63		22,822.43
Total Personnel Services – Salaries	\$12,048.80	\$10,773.63		\$22,822.43
200 Personnel Services – Employee Benefits				
210 Group Insurance – Contracted Provider	1,380.11	1,234.05		2,614.16
220 Social Security Contributions	71.19	63.66		134.85
230 PSERS Retirement Contributions	1,745.21	1,560.52		3,305.73
240 Tuition Reimbursement	15,337.62	13,714.38		29,052.00
250 Unemployment Compensation	0.17	0.15		0.32
260 Workers' Compensation	3.23	2.89		6.12
Total Personnel Services – Employee Benefits	\$18,537.53	\$16,575.65		\$35,113.18
300 Purchased Professional and Technical Services				
360 Employee Training and Development Services	5,226.93	8,847.55	3,897.31	17,971.79
Total Purchased Professional and Technical Services	\$5,226.93	\$8,847.55	\$3,897.31	\$17,971.79
500 Other Purchased Services				
580 Travel	4,013.09	9,843.72		13,856.81
Total Other Purchased Services	\$4,013.09	\$9,843.72		\$13,856.81
800 Other Objects				
810 Dues and Fees	148.79	885.21		1,034.00
Total Other Objects	\$148.79	\$885.21		\$1,034.00
Total 2270 Instructional Staff Professional Development Services	\$39,975.14	\$46,925.76	\$3,897.31	\$90,798.21

LEA : 103026852 North Allegheny SD

Printed 10/30/2025 12:53:41 PM

General Fund (10)

	<u>Elementary</u>	<u>Secondary</u>	<u>Federal</u>	<u>Total</u>
2290 Other Instructional Staff Services				
100 Personnel Services – Salaries				
100 Personnel Services – Salaries			4,000.00	4,000.00
Total Personnel Services – Salaries			\$4,000.00	\$4,000.00
300 Purchased Professional and Technical Services				
329 Professional Educational Services – Other	11,878.57	10,621.43		22,500.00
Total Purchased Professional and Technical Services	\$11,878.57	\$10,621.43		\$22,500.00
Total 2290 Other Instructional Staff Services	\$11,878.57	\$10,621.43	\$4,000.00	\$26,500.00

LEA : 103026852 North Allegheny SD

Printed 10/30/2025 12:53:41 PM

General Fund (10)

2300 Support Services – Administration

	<u>Elementary</u>	<u>Secondary</u>	<u>Federal</u>	<u>Total</u>
100 Personnel Services – Salaries				
100 Personnel Services – Salaries	2,216,485.06	1,824,635.45		4,951,776.49
Total Personnel Services – Salaries	\$2,216,485.06	\$1,824,635.45		\$4,951,776.49
200 Personnel Services – Employee Benefits				
210 Group Insurance – Contracted Provider	476,904.55	373,437.87		1,043,772.45
220 Social Security Contributions	220,026.10	167,586.42		484,129.95
230 PSERS Retirement Contributions	756,943.40	623,784.12		1,687,918.90
250 Unemployment Compensation	512.01	389.98		1,126.66
260 Workers' Compensation	9,982.31	7,603.17		21,964.47
Total Personnel Services – Employee Benefits	\$1,464,368.37	\$1,172,801.56		\$3,238,912.43
300 Purchased Professional and Technical Services				
310 Official / Administrative Services				563,757.52
330 Other Professional Services				473,644.43
Total Purchased Professional and Technical Services				\$1,037,401.95
400 Purchased Property Services				
430 Repairs and Maintenance Services	4,128.33	1,871.67		6,880.27
Total Purchased Property Services	\$4,128.33	\$1,871.67		\$6,880.27
500 Other Purchased Services				
520 Insurance – General				2,002.71
530 Communications	7,009.04	8,164.50		268,564.37
580 Travel	1,870.94	3,556.95		9,451.27
Total Other Purchased Services	\$8,879.98	\$11,721.45		\$280,018.35
600 Supplies				
610 General Supplies	6,536.95	25,438.15		107,179.43
640 Books and Periodicals	38.18			38.18
650 Supplies & Fees – Technology Related				244,768.76
Total Supplies	\$6,575.13	\$25,438.15		\$351,986.37
800 Other Objects				
810 Dues and Fees	3,595.42	3,771.20		171,365.65
820 Claims and Judgments Against the LEA				29,685.00
Total Other Objects	\$3,595.42	\$3,771.20		\$201,050.65
Total 2300 Support Services – Administration	\$3,704,032.29	\$3,040,239.48		\$10,068,026.51

General Fund (10)

2310 Board Services

Elementary Secondary Federal Total

100	<u>Personnel Services – Salaries</u>			
	100 Personnel Services – Salaries			32,887.92
Total Personnel Services – Salaries				\$32,887.92
200	<u>Personnel Services – Employee Benefits</u>			
	210 Group Insurance – Contracted Provider			15,039.31
	220 Social Security Contributions			3,323.15
	230 PSERS Retirement Contributions			11,318.03
	250 Unemployment Compensation			7.74
	260 Workers' Compensation			150.76
Total Personnel Services – Employee Benefits				\$29,838.99
300	<u>Purchased Professional and Technical Services</u>			
	310 Official / Administrative Services			2,000.00
Total Purchased Professional and Technical Services				\$2,000.00
400	<u>Purchased Property Services</u>			
	430 Repairs and Maintenance Services			160.77
Total Purchased Property Services				\$160.77
500	<u>Other Purchased Services</u>			
	520 Insurance – General			100.00
	580 Travel			106.80
Total Other Purchased Services				\$206.80
600	<u>Supplies</u>			
	610 General Supplies			534.11
	650 Supplies & Fees – Technology Related			8,000.00
Total Supplies				\$8,534.11
800	<u>Other Objects</u>			
	810 Dues and Fees			19,503.60
	820 Claims and Judgments Against the LEA			29,685.00
Total Other Objects				\$49,188.60
Total 2310 Board Services				\$122,817.19

General Fund (10)

	<u>Elementary</u>	<u>Secondary</u>	<u>Federal</u>	<u>Total</u>
2330 Tax Assessment and Collection Services				
300 <u>Purchased Professional and Technical Services</u>				
310 Official / Administrative Services				549,907.52
Total Purchased Professional and Technical Services				\$549,907.52
500 <u>Other Purchased Services</u>				
520 Insurance – General				1,573.00
Total Other Purchased Services				\$1,573.00
Total 2330 Tax Assessment and Collection Services				\$551,480.52

General Fund (10)

2350 Legal and Accounting Services

Elementary

Secondary

Federal

Total

300 Purchased Professional and Technical Services

330 Other Professional Services

473,644.43

Total Purchased Professional and Technical Services

\$473,644.43

Total 2350 Legal and Accounting Services

\$473,644.43

General Fund (10)

	<u>Elementary</u>	<u>Secondary</u>	<u>Federal</u>	<u>Total</u>
2360 Office of the Superintendent / Executive Director Services				
100 Personnel Services – Salaries				
100 Personnel Services – Salaries				807,768.00
Total Personnel Services – Salaries				\$807,768.00
200 Personnel Services – Employee Benefits				
210 Group Insurance – Contracted Provider				163,455.38
220 Social Security Contributions				85,928.56
230 PSERS Retirement Contributions				271,783.56
250 Unemployment Compensation				200.02
260 Workers' Compensation				3,898.59
Total Personnel Services – Employee Benefits				\$525,266.11
300 Purchased Professional and Technical Services				
310 Official / Administrative Services				11,850.00
Total Purchased Professional and Technical Services				\$11,850.00
400 Purchased Property Services				
430 Repairs and Maintenance Services				719.50
Total Purchased Property Services				\$719.50
500 Other Purchased Services				
520 Insurance – General				329.71
530 Communications	4,188.12	3,744.87		7,932.99
580 Travel				3,620.05
Total Other Purchased Services	\$4,188.12	\$3,744.87		\$11,882.75
600 Supplies				
610 General Supplies				30,211.34
650 Supplies & Fees – Technology Related				236,768.76
Total Supplies				\$266,980.10
800 Other Objects				
810 Dues and Fees				7,328.85
Total Other Objects				\$7,328.85
Total 2360 Office of the Superintendent / Executive Director Services	\$4,188.12	\$3,744.87		\$1,631,795.31

General Fund (10)

2370 Community Relations Services

Elementary

Secondary

Federal

Total

100 Personnel Services – Salaries

100 Personnel Services – Salaries

70,000.06

Total Personnel Services – Salaries

\$70,000.06

200 Personnel Services – Employee Benefits

210 Group Insurance – Contracted Provider

14,935.34

220 Social Security Contributions

7,265.72

230 PSERS Retirement Contributions

24,089.79

250 Unemployment Compensation

16.91

260 Workers' Compensation

329.64

Total Personnel Services – Employee Benefits

\$46,637.40

500 Other Purchased Services

580 Travel

296.53

Total Other Purchased Services

\$296.53

Total 2370 Community Relations Services

\$116,933.99

General Fund (10)

2380 Office of the Principal Services

	<u>Elementary</u>	<u>Secondary</u>	<u>Federal</u>	<u>Total</u>
100 Personnel Services – Salaries				
100 Personnel Services – Salaries	2,216,485.06	1,824,635.45		4,041,120.51
Total Personnel Services – Salaries	\$2,216,485.06	\$1,824,635.45		\$4,041,120.51
200 Personnel Services – Employee Benefits				
210 Group Insurance – Contracted Provider	476,904.55	373,437.87		850,342.42
220 Social Security Contributions	220,026.10	167,586.42		387,612.52
230 PSERS Retirement Contributions	756,943.40	623,784.12		1,380,727.52
250 Unemployment Compensation	512.01	389.98		901.99
260 Workers' Compensation	9,982.31	7,603.17		17,585.48
Total Personnel Services – Employee Benefits	\$1,464,368.37	\$1,172,801.56		\$2,637,169.93
400 Purchased Property Services				
430 Repairs and Maintenance Services	4,128.33	1,871.67		6,000.00
Total Purchased Property Services	\$4,128.33	\$1,871.67		\$6,000.00
500 Other Purchased Services				
530 Communications	2,820.92	4,419.63		7,240.55
580 Travel	1,870.94	3,556.95		5,427.89
Total Other Purchased Services	\$4,691.86	\$7,976.58		\$12,668.44
600 Supplies				
610 General Supplies	6,536.95	25,438.15		31,975.10
640 Books and Periodicals	38.18			38.18
Total Supplies	\$6,575.13	\$25,438.15		\$32,013.28
800 Other Objects				
810 Dues and Fees	3,595.42	3,771.20		7,366.62
Total Other Objects	\$3,595.42	\$3,771.20		\$7,366.62
Total 2380 Office of the Principal Services	\$3,699,844.17	\$3,036,494.61		\$6,736,338.78

LEA : 103026852 North Allegheny SD

Printed 10/30/2025 12:53:41 PM

General Fund (10)

	<u>Elementary</u>	<u>Secondary</u>	<u>Federal</u>	<u>Total</u>
2390 Other Administration Services				
500 Other Purchased Services				
530 Communications				253,390.83
Total Other Purchased Services				\$253,390.83
600 Supplies				
610 General Supplies				44,458.88
Total Supplies				\$44,458.88
800 Other Objects				
810 Dues and Fees				137,166.58
Total Other Objects				\$137,166.58
Total 2390 Other Administration Services				\$435,016.29

General Fund (10)

	<u>Elementary</u>	<u>Secondary</u>	<u>Federal</u>	<u>Total</u>
2400 Support Services – Pupil Health				
100 Personnel Services – Salaries				
100 Personnel Services – Salaries				1,343,944.40
Total Personnel Services – Salaries				\$1,343,944.40
200 Personnel Services – Employee Benefits				
210 Group Insurance – Contracted Provider				270,062.88
220 Social Security Contributions				93,879.48
230 PSERS Retirement Contributions				465,061.12
250 Unemployment Compensation				218.43
260 Workers' Compensation				4,259.16
Total Personnel Services – Employee Benefits				\$833,481.07
300 Purchased Professional and Technical Services				
330 Other Professional Services				5,000.00
Total Purchased Professional and Technical Services				\$5,000.00
400 Purchased Property Services				
430 Repairs and Maintenance Services				892.00
Total Purchased Property Services				\$892.00
500 Other Purchased Services				
580 Travel				65.60
Total Other Purchased Services				\$65.60
600 Supplies				
610 General Supplies				31,099.64
Total Supplies				\$31,099.64
Total 2400 Support Services – Pupil Health				\$2,214,482.71

General Fund (10)

2420 Medical Services

Elementary

Secondary

Federal

Total

300 Purchased Professional and Technical Services

330 Other Professional Services

2,500.00

Total Purchased Professional and Technical Services

\$2,500.00

600 Supplies

610 General Supplies

28,279.64

Total Supplies

\$28,279.64

Total 2420 Medical Services

\$30,779.64

General Fund (10)

2430 Dental Services

Elementary

Secondary

Federal

Total

300 Purchased Professional and Technical Services

330 Other Professional Services

2,500.00

Total Purchased Professional and Technical Services

\$2,500.00

Total 2430 Dental Services

\$2,500.00

General Fund (10)

2440 Nursing Services

	<u>Elementary</u>	<u>Secondary</u>	<u>Federal</u>	<u>Total</u>
100 Personnel Services – Salaries				
100 Personnel Services – Salaries				1,343,944.40
Total Personnel Services – Salaries				\$1,343,944.40
200 Personnel Services – Employee Benefits				
210 Group Insurance – Contracted Provider				270,062.88
220 Social Security Contributions				93,879.48
230 PSERS Retirement Contributions				465,061.12
250 Unemployment Compensation				218.43
260 Workers' Compensation				4,259.16
Total Personnel Services – Employee Benefits				\$833,481.07
500 Other Purchased Services				
580 Travel				65.60
Total Other Purchased Services				\$65.60
Total 2440 Nursing Services				\$2,177,491.07

General Fund (10)

2490 Other Health Services

Elementary

Secondary

Federal

Total

400 Purchased Property Services

430 Repairs and Maintenance Services

892.00

Total Purchased Property Services

\$892.00

600 Supplies

610 General Supplies

2,820.00

Total Supplies

\$2,820.00

Total 2490 Other Health Services

\$3,712.00

General Fund (10)

2500 Support Services – Business

Elementary Secondary Federal Total

100 Personnel Services – Salaries

100 Personnel Services – Salaries 688,646.20

Total Personnel Services – Salaries \$688,646.20

200 Personnel Services – Employee Benefits

210 Group Insurance – Contracted Provider 141,123.33

220 Social Security Contributions 72,094.72

230 PSERS Retirement Contributions 237,642.74

250 Unemployment Compensation 167.77

260 Workers' Compensation 3,270.84

Total Personnel Services – Employee Benefits \$454,299.40

300 Purchased Professional and Technical Services

330 Other Professional Services 6,126.00

Total Purchased Professional and Technical Services \$6,126.00

400 Purchased Property Services

440 Rentals 378,607.89

Total Purchased Property Services \$378,607.89

500 Other Purchased Services

520 Insurance – General 102,909.00

530 Communications 101.00

550 Printing and Binding 14,637.00

580 Travel 65.20

Total Other Purchased Services \$117,712.20

600 Supplies

610 General Supplies 98,820.33

Total Supplies \$98,820.33

800 Other Objects

810 Dues and Fees 2,845.10

Total Other Objects \$2,845.10

Total 2500 Support Services – Business \$1,747,057.12

General Fund (10)

2510 Fiscal Services

Elementary Secondary Federal Total

100	<u>Personnel Services – Salaries</u>			
	100 Personnel Services – Salaries			569,002.07
Total Personnel Services – Salaries				\$569,002.07
200	<u>Personnel Services – Employee Benefits</u>			
	210 Group Insurance – Contracted Provider			118,518.91
	220 Social Security Contributions			56,489.47
	230 PSERS Retirement Contributions			199,447.61
	250 Unemployment Compensation			131.46
	260 Workers' Compensation			2,562.85
Total Personnel Services – Employee Benefits				\$377,150.30
300	<u>Purchased Professional and Technical Services</u>			
	330 Other Professional Services			3,876.00
Total Purchased Professional and Technical Services				\$3,876.00
500	<u>Other Purchased Services</u>			
	520 Insurance – General			102,909.00
	580 Travel			20.60
Total Other Purchased Services				\$102,929.60
600	<u>Supplies</u>			
	610 General Supplies			75.44
Total Supplies				\$75.44
800	<u>Other Objects</u>			
	810 Dues and Fees			2,554.20
Total Other Objects				\$2,554.20
Total 2510 Fiscal Services				\$1,055,587.61

General Fund (10)

2511 Supervision of Fiscal Services - Head of Component

Elementary

Secondary

Federal

Total

100 Personnel Services – Salaries

100 Personnel Services – Salaries

132,753.80

Total Personnel Services – Salaries

\$132,753.80

200 Personnel Services – Employee Benefits

210 Group Insurance – Contracted Provider

26,663.95

220 Social Security Contributions

13,432.65

230 PSERS Retirement Contributions

45,685.83

250 Unemployment Compensation

31.26

260 Workers' Compensation

609.42

Total Personnel Services – Employee Benefits

\$86,423.11

500 Other Purchased Services

520 Insurance – General

1,619.00

Total Other Purchased Services

\$1,619.00

Total 2511 Supervision of Fiscal Services - Head of Component

\$220,795.91

General Fund (10)

2513 Receiving and Disbursing Funds Services

Elementary

Secondary

Federal

Total

100 Personnel Services – Salaries

100 Personnel Services – Salaries

135,241.94

Total Personnel Services – Salaries

\$135,241.94

200 Personnel Services – Employee Benefits

210 Group Insurance – Contracted Provider

29,051.56

220 Social Security Contributions

12,262.60

230 PSERS Retirement Contributions

48,484.90

250 Unemployment Compensation

28.54

260 Workers' Compensation

556.34

Total Personnel Services – Employee Benefits

\$90,383.94

500 Other Purchased Services

580 Travel

20.60

Total Other Purchased Services

\$20.60

Total 2513 Receiving and Disbursing Funds Services

\$225,646.48

General Fund (10)

2514 Payroll Services

	<u>Elementary</u>	<u>Secondary</u>	<u>Federal</u>	<u>Total</u>
100 Personnel Services – Salaries				
100 Personnel Services – Salaries				138,551.44
Total Personnel Services – Salaries				\$138,551.44
200 Personnel Services – Employee Benefits				
210 Group Insurance – Contracted Provider				28,996.04
220 Social Security Contributions				14,168.28
230 PSERS Retirement Contributions				49,369.73
250 Unemployment Compensation				32.97
260 Workers' Compensation				642.79
Total Personnel Services – Employee Benefits				\$93,209.81
800 Other Objects				
810 Dues and Fees				349.70
Total Other Objects				\$349.70
Total 2514 Payroll Services				\$232,110.95

General Fund (10)

	<u>Elementary</u>	<u>Secondary</u>	<u>Federal</u>	<u>Total</u>
2515 Financial Accounting Services				
100 Personnel Services – Salaries				
100 Personnel Services – Salaries				162,454.89
Total Personnel Services – Salaries				\$162,454.89
200 Personnel Services – Employee Benefits				
210 Group Insurance – Contracted Provider				33,807.36
220 Social Security Contributions				16,625.94
230 PSERS Retirement Contributions				55,907.15
250 Unemployment Compensation				38.69
260 Workers' Compensation				754.30
Total Personnel Services – Employee Benefits				\$107,133.44
600 Supplies				
610 General Supplies				75.44
Total Supplies				\$75.44
800 Other Objects				
810 Dues and Fees				2,204.50
Total Other Objects				\$2,204.50
Total 2515 Financial Accounting Services				\$271,868.27

General Fund (10)

2519 Other Fiscal Services

Elementary

Secondary

Federal

Total

300 Purchased Professional and Technical Services

330 Other Professional Services

3,876.00

Total Purchased Professional and Technical Services

\$3,876.00

500 Other Purchased Services

520 Insurance – General

101,290.00

Total Other Purchased Services

\$101,290.00

Total 2519 Other Fiscal Services

\$105,166.00

General Fund (10)

2520 Purchasing Services

Elementary Secondary Federal Total

100	<u>Personnel Services – Salaries</u>				
	100 Personnel Services – Salaries				119,644.13
Total Personnel Services – Salaries					\$119,644.13
200	<u>Personnel Services – Employee Benefits</u>				
	210 Group Insurance – Contracted Provider				22,604.42
	220 Social Security Contributions				15,605.25
	230 PSERS Retirement Contributions				38,195.13
	250 Unemployment Compensation				36.31
	260 Workers' Compensation				707.99
Total Personnel Services – Employee Benefits					\$77,149.10
500	<u>Other Purchased Services</u>				
	530 Communications				101.00
	580 Travel				44.60
Total Other Purchased Services					\$145.60
600	<u>Supplies</u>				
	610 General Supplies				15,767.57
Total Supplies					\$15,767.57
800	<u>Other Objects</u>				
	810 Dues and Fees				290.90
Total Other Objects					\$290.90
Total 2520 Purchasing Services					\$212,997.30

General Fund (10)

	<u>Elementary</u>	<u>Secondary</u>	<u>Federal</u>	<u>Total</u>
2540 Printing, Publishing and Duplicating Services				
400 <u>Purchased Property Services</u>				
440 Rentals				378,607.89
Total Purchased Property Services				\$378,607.89
500 <u>Other Purchased Services</u>				
550 Printing and Binding				14,637.00
Total Other Purchased Services				\$14,637.00
600 <u>Supplies</u>				
610 General Supplies				82,977.32
Total Supplies				\$82,977.32
Total 2540 Printing, Publishing and Duplicating Services				\$476,222.21

General Fund (10)

2590 Other Support Services – Business

Elementary

Secondary

Federal

Total

300 Purchased Professional and Technical Services

330 Other Professional Services

2,250.00

Total Purchased Professional and Technical Services

\$2,250.00

Total 2590 Other Support Services – Business

\$2,250.00

General Fund (10)

	<u>Elementary</u>	<u>Secondary</u>	<u>Federal</u>	<u>Total</u>
2610 Supervision of Operation and Maintenance of Plant Services				
100 Personnel Services – Salaries				
100 Personnel Services – Salaries				407,556.35
Total Personnel Services – Salaries				\$407,556.35
200 Personnel Services – Employee Benefits				
210 Group Insurance – Contracted Provider				114,002.83
220 Social Security Contributions				54,556.74
230 PSERS Retirement Contributions				142,425.28
250 Unemployment Compensation				126.95
260 Workers' Compensation				2,475.17
Total Personnel Services – Employee Benefits				\$313,586.97
300 Purchased Professional and Technical Services				
390 Other Purchased Professional and Technical Services				1,865.00
Total Purchased Professional and Technical Services				\$1,865.00
500 Other Purchased Services				
530 Communications				54.23
580 Travel				6,477.86
Total Other Purchased Services				\$6,532.09
600 Supplies				
610 General Supplies	2,848.07	2,546.63		5,394.70
Total Supplies	\$2,848.07	\$2,546.63		\$5,394.70
800 Other Objects				
810 Dues and Fees				290.90
Total Other Objects				\$290.90
Total 2610 Supervision of Operation and Maintenance of Plant Services	\$2,848.07	\$2,546.63		\$735,226.01

General Fund (10)

	<u>Elementary</u>	<u>Secondary</u>	<u>Federal</u>	<u>Total</u>
2611 Supervision of Operation and Maintenance of Plant Services – Head of Component				
100 <u>Personnel Services – Salaries</u>				
100 Personnel Services – Salaries				154,099.79
Total Personnel Services – Salaries				\$154,099.79
200 <u>Personnel Services – Employee Benefits</u>				
210 Group Insurance – Contracted Provider				32,108.48
220 Social Security Contributions				28,059.19
230 PSERS Retirement Contributions				54,091.77
250 Unemployment Compensation				65.30
260 Workers' Compensation				1,273.00
Total Personnel Services – Employee Benefits				\$115,597.74
500 <u>Other Purchased Services</u>				
580 Travel				315.39
Total Other Purchased Services				\$315.39
Total 2611 Supervision of Operation and Maintenance of Plant Services – Head of Component				\$270,012.92

General Fund (10)

	<u>Elementary</u>	<u>Secondary</u>	<u>Federal</u>	<u>Total</u>
2620 Operation of Buildings Services				
100 Personnel Services – Salaries				
100 Personnel Services – Salaries				5,104,261.15
Total Personnel Services – Salaries				\$5,104,261.15
200 Personnel Services – Employee Benefits				
210 Group Insurance – Contracted Provider				974,421.42
220 Social Security Contributions				450,768.05
230 PSERS Retirement Contributions				1,758,687.09
250 Unemployment Compensation				1,004.23
260 Workers' Compensation				20,450.42
Total Personnel Services – Employee Benefits				\$3,205,331.21
300 Purchased Professional and Technical Services				
340 Technical Services				12,034.58
Total Purchased Professional and Technical Services				\$12,034.58
400 Purchased Property Services				
410 Cleaning Services				113,963.08
420 Utility Services				271,214.34
430 Repairs and Maintenance Services				408,830.24
440 Rentals				30,486.89
Total Purchased Property Services				\$824,494.55
500 Other Purchased Services				
522 Automotive Liability Insurance				9,342.00
523 General Property and Liability Insurance				273,831.57
580 Travel				793.15
591 Services Purchased Locally				9,957.31
Total Other Purchased Services				\$293,924.03
600 Supplies				
610 General Supplies	238,362.60	357,370.09		595,732.69
620 Energy				2,213,677.21
Total Supplies	\$238,362.60	\$357,370.09		\$2,809,409.90
Total 2620 Operation of Buildings Services	\$238,362.60	\$357,370.09		\$12,249,455.42

LEA : 103026852 North Allegheny SD

Printed 10/30/2025 12:53:41 PM

General Fund (10)

2630 Care and Upkeep of Grounds Services

Elementary

Secondary

Federal

Total

400 Purchased Property Services

410 Cleaning Services

287,116.68

430 Repairs and Maintenance Services

124,855.74

Total Purchased Property Services

\$411,972.42

600 Supplies

610 General Supplies

103,790.20

92,871.93

196,662.13

Total Supplies

\$103,790.20

\$92,871.93

\$196,662.13

Total 2630 Care and Upkeep of Grounds Services

\$103,790.20

\$92,871.93

\$608,634.55

General Fund (10)

	<u>Elementary</u>	<u>Secondary</u>	<u>Federal</u>	<u>Total</u>
2640 Care and Upkeep of Equipment Services				
300 <u>Purchased Professional and Technical Services</u>				
340 Technical Services				35,764.64
350 Security / Safety Services				10,440.22
Total Purchased Professional and Technical Services				\$46,204.86
400 <u>Purchased Property Services</u>				
430 Repairs and Maintenance Services				168,335.00
440 Rentals				2,444.28
Total Purchased Property Services				\$170,779.28
600 <u>Supplies</u>				
610 General Supplies	24,063.95	16,832.74		40,896.69
Total Supplies	\$24,063.95	\$16,832.74		\$40,896.69
700 <u>Property</u>				
752 Capital Equipment – Original and Additional				29,906.00
Total Property				\$29,906.00
Total 2640 Care and Upkeep of Equipment Services	\$24,063.95	\$16,832.74		\$287,786.83

General Fund (10)

	<u>Elementary</u>	<u>Secondary</u>	<u>Federal</u>	<u>Total</u>
2650 Vehicle Operation and Maintenance Services (Other Than Student Transportation Vehicles)				
400 <u>Purchased Property Services</u>				
490 Other Purchased Property Services				428.86
Total Purchased Property Services				\$428.86
600 <u>Supplies</u>				
610 General Supplies	39.60	35.40		75.00
Total Supplies	\$39.60	\$35.40		\$75.00
700 <u>Property</u>				
752 Capital Equipment – Original and Additional				55,591.08
Total Property				\$55,591.08
800 <u>Other Objects</u>				
810 Dues and Fees				100.00
Total Other Objects				\$100.00
Total 2650 Vehicle Operation and Maintenance Services (Other Than Student Transportation Vehicles)	\$39.60	\$35.40		\$56,194.94

General Fund (10)

2660 Safety and Security Services

100 Personnel Services – Salaries

	<u>Elementary</u>	<u>Secondary</u>	<u>Federal</u>	<u>Total</u>
100 Personnel Services – Salaries				800,282.70
Total Personnel Services – Salaries				\$800,282.70

200 Personnel Services – Employee Benefits

210 Group Insurance – Contracted Provider				148,726.47
220 Social Security Contributions				2,271.12
230 PSERS Retirement Contributions				165,069.32
250 Unemployment Compensation				5.28
260 Workers' Compensation				103.04
Total Personnel Services – Employee Benefits				\$316,175.23

300 Purchased Professional and Technical Services

350 Security / Safety Services				224,298.15
390 Other Purchased Professional and Technical Services				742.50
Total Purchased Professional and Technical Services				\$225,040.65

400 Purchased Property Services

430 Repairs and Maintenance Services				23,267.90
Total Purchased Property Services				\$23,267.90

500 Other Purchased Services

580 Travel				215.88
Total Other Purchased Services				\$215.88

600 Supplies

610 General Supplies	33,818.43	31,890.18		65,708.61
650 Supplies & Fees – Technology Related				497.50
Total Supplies	\$33,818.43	\$31,890.18		\$66,206.11

800 Other Objects

810 Dues and Fees				4,807.08
Total Other Objects				\$4,807.08

Total 2660 Safety and Security Services

	\$33,818.43	\$31,890.18		\$1,435,995.55
--	--------------------	--------------------	--	-----------------------

LEA : 103026852 North Allegheny SD

Printed 10/30/2025 12:53:41 PM

General Fund (10)

	<u>Elementary</u>	<u>Secondary</u>	<u>Federal</u>	<u>Total</u>
2690 Other Operation and Maintenance of Plant Services				
300 <u>Purchased Professional and Technical Services</u>				
390 Other Purchased Professional and Technical Services				2,610.00
Total Purchased Professional and Technical Services				\$2,610.00
600 <u>Supplies</u>				
610 General Supplies	1,395.45	1,247.78		2,643.23
Total Supplies	\$1,395.45	\$1,247.78		\$2,643.23
Total 2690 Other Operation and Maintenance of Plant Services	\$1,395.45	\$1,247.78		\$5,253.23

General Fund (10)

2700 Student Transportation Services

	<u>Elementary</u>	<u>Secondary</u>	<u>Federal</u>	<u>Total</u>
--	-------------------	------------------	----------------	--------------

100 Personnel Services – Salaries

100 Personnel Services – Salaries			918.30	4,054,643.16
-----------------------------------	--	--	--------	--------------

Total Personnel Services – Salaries			\$918.30	\$4,054,643.16
--	--	--	-----------------	-----------------------

200 Personnel Services – Employee Benefits

210 Group Insurance – Contracted Provider				728,656.65
220 Social Security Contributions				351,591.20
230 PSERS Retirement Contributions				1,413,067.60
250 Unemployment Compensation				813.76
260 Workers' Compensation				15,951.27

Total Personnel Services – Employee Benefits				\$2,510,080.48
---	--	--	--	-----------------------

300 Purchased Professional and Technical Services

330 Other Professional Services				8,134.54
390 Other Purchased Professional and Technical Services				26,503.73

Total Purchased Professional and Technical Services				\$34,638.27
--	--	--	--	--------------------

400 Purchased Property Services

410 Cleaning Services				27,924.95
430 Repairs and Maintenance Services				1,563.00
440 Rentals				1,500.00

Total Purchased Property Services				\$30,987.95
--	--	--	--	--------------------

500 Other Purchased Services

513 Contracted Carriers				6,117,599.46
516 Student Transportation Services From the IU				8,221.26
519 Student Transportation Services From Other Sources				(64,350.40)
522 Automotive Liability Insurance				98,225.00
524 Other Pupil Transportation Insurance				1,237.50
530 Communications				432.00
580 Travel				2,500.00

Total Other Purchased Services				\$6,163,864.82
---------------------------------------	--	--	--	-----------------------

600 Supplies

610 General Supplies				261,535.23
620 Energy				494,415.21
650 Supplies & Fees – Technology Related				87,298.96

Total Supplies				\$843,249.40
-----------------------	--	--	--	---------------------

700 Property

752 Capital Equipment – Original and Additional				131,458.60
---	--	--	--	------------

Total Property				\$131,458.60
-----------------------	--	--	--	---------------------

800 Other Objects

810 Dues and Fees				291.00
-------------------	--	--	--	--------

Total Other Objects				\$291.00
----------------------------	--	--	--	-----------------

Total 2700 Student Transportation Services			\$918.30	\$13,769,213.68
---	--	--	-----------------	------------------------

General Fund (10)

	<u>Elementary</u>	<u>Secondary</u>	<u>Federal</u>	<u>Total</u>
2710 Supervision of Student Transportation Services				
100 Personnel Services – Salaries				
100 Personnel Services – Salaries				323,214.03
Total Personnel Services – Salaries				\$323,214.03
200 Personnel Services – Employee Benefits				
210 Group Insurance – Contracted Provider				81,980.92
220 Social Security Contributions				6,238.62
230 PSERS Retirement Contributions				112,277.06
250 Unemployment Compensation				14.52
260 Workers' Compensation				283.04
Total Personnel Services – Employee Benefits				\$200,794.16
300 Purchased Professional and Technical Services				
330 Other Professional Services				658.00
390 Other Purchased Professional and Technical Services				26,503.73
Total Purchased Professional and Technical Services				\$27,161.73
500 Other Purchased Services				
530 Communications				432.00
Total Other Purchased Services				\$432.00
600 Supplies				
610 General Supplies				5,796.95
Total Supplies				\$5,796.95
800 Other Objects				
810 Dues and Fees				291.00
Total Other Objects				\$291.00
Total 2710 Supervision of Student Transportation Services				\$557,689.87

General Fund (10)

2711 Supervision of Student Transportation Services – Head of Component

Elementary

Secondary

Federal

Total

100 Personnel Services – Salaries

100 Personnel Services – Salaries

120,179.51

Total Personnel Services – Salaries

\$120,179.51

200 Personnel Services – Employee Benefits

210 Group Insurance – Contracted Provider

23,905.21

220 Social Security Contributions

2,762.04

230 PSERS Retirement Contributions

41,592.60

250 Unemployment Compensation

6.43

260 Workers' Compensation

125.31

Total Personnel Services – Employee Benefits

\$68,391.59

800 Other Objects

810 Dues and Fees

291.00

Total Other Objects

\$291.00

Total 2711 Supervision of Student Transportation Services – Head of Component

\$188,862.10

General Fund (10)

	<u>Elementary</u>	<u>Secondary</u>	<u>Federal</u>	<u>Total</u>
2719 Supervision of Student Transportation Services – All Other Supervision				
100 <u>Personnel Services – Salaries</u>				
100 Personnel Services – Salaries				203,034.52
Total Personnel Services – Salaries				\$203,034.52
200 <u>Personnel Services – Employee Benefits</u>				
210 Group Insurance – Contracted Provider				58,075.71
220 Social Security Contributions				3,476.58
230 PSERS Retirement Contributions				70,684.46
250 Unemployment Compensation				8.09
260 Workers' Compensation				157.73
Total Personnel Services – Employee Benefits				\$132,402.57
300 <u>Purchased Professional and Technical Services</u>				
330 Other Professional Services				658.00
390 Other Purchased Professional and Technical Services				26,503.73
Total Purchased Professional and Technical Services				\$27,161.73
500 <u>Other Purchased Services</u>				
530 Communications				432.00
Total Other Purchased Services				\$432.00
600 <u>Supplies</u>				
610 General Supplies				5,796.95
Total Supplies				\$5,796.95
Total 2719 Supervision of Student Transportation Services – All Other Supervision				\$368,827.77

General Fund (10)

2720 Vehicle Operation Services

100 Personnel Services – Salaries

100 Personnel Services – Salaries

Total Personnel Services – Salaries

200 Personnel Services – Employee Benefits

210 Group Insurance – Contracted Provider

220 Social Security Contributions

230 PSERS Retirement Contributions

250 Unemployment Compensation

260 Workers' Compensation

Total Personnel Services – Employee Benefits

300 Purchased Professional and Technical Services

330 Other Professional Services

Total Purchased Professional and Technical Services

500 Other Purchased Services

513 Contracted Carriers

516 Student Transportation Services From the IU

519 Student Transportation Services From Other Sources

522 Automotive Liability Insurance

580 Travel

Total Other Purchased Services

600 Supplies

610 General Supplies

Total Supplies

Total 2720 Vehicle Operation Services

	<u>Elementary</u>	<u>Secondary</u>	<u>Federal</u>	<u>Total</u>
			918.30	2,590,358.95
			\$918.30	\$2,590,358.95
				483,333.76
				241,262.46
				902,893.86
				557.00
				10,945.78
				\$1,638,992.86
				7,476.54
				\$7,476.54
				3,082,837.53
				8,221.26
				(64,350.40)
				98,225.00
				2,500.00
				\$3,127,433.39
				84.00
				\$84.00
			\$918.30	\$7,364,345.74

General Fund (10)

	<u>Elementary</u>	<u>Secondary</u>	<u>Federal</u>	<u>Total</u>
2740 Vehicle Servicing and Maintenance Services				
100 Personnel Services – Salaries				
100 Personnel Services – Salaries				1,141,070.18
Total Personnel Services – Salaries				\$1,141,070.18
200 Personnel Services – Employee Benefits				
210 Group Insurance – Contracted Provider				163,341.97
220 Social Security Contributions				104,090.12
230 PSERS Retirement Contributions				397,896.68
250 Unemployment Compensation				242.24
260 Workers' Compensation				4,722.45
Total Personnel Services – Employee Benefits				\$670,293.46
400 Purchased Property Services				
410 Cleaning Services				27,924.95
430 Repairs and Maintenance Services				1,563.00
Total Purchased Property Services				\$29,487.95
600 Supplies				
610 General Supplies				255,654.28
620 Energy				494,415.21
Total Supplies				\$750,069.49
700 Property				
752 Capital Equipment – Original and Additional				131,458.60
Total Property				\$131,458.60
Total 2740 Vehicle Servicing and Maintenance Services				\$2,722,379.68

LEA : 103026852 North Allegheny SD

Printed 10/30/2025 12:53:41 PM

General Fund (10)

2750 Nonpublic Transportation

Elementary

Secondary

Federal

Total

500 Other Purchased Services

513 Contracted Carriers

3,034,761.93

Total Other Purchased Services

\$3,034,761.93

Total 2750 Nonpublic Transportation

\$3,034,761.93

General Fund (10)

	<u>Elementary</u>	<u>Secondary</u>	<u>Federal</u>	<u>Total</u>
2790 Other Student Transportation Services				
400 <u>Purchased Property Services</u>				
440 Rentals				1,500.00
Total Purchased Property Services				\$1,500.00
500 <u>Other Purchased Services</u>				
524 Other Pupil Transportation Insurance				1,237.50
Total Other Purchased Services				\$1,237.50
600 <u>Supplies</u>				
650 Supplies & Fees – Technology Related				87,298.96
Total Supplies				\$87,298.96
Total 2790 Other Student Transportation Services				\$90,036.46

General Fund (10)

2800 Support Services – Central

Elementary Secondary Federal Total

100	<u>Personnel Services – Salaries</u>				
	100 Personnel Services – Salaries				2,118,526.77
Total Personnel Services – Salaries					\$2,118,526.77
200	<u>Personnel Services – Employee Benefits</u>				
	210 Group Insurance – Contracted Provider				484,582.28
	220 Social Security Contributions				210,663.44
	230 PSERS Retirement Contributions				718,529.81
	250 Unemployment Compensation				489.03
	260 Workers' Compensation				9,557.53
Total Personnel Services – Employee Benefits					\$1,423,822.09
300	<u>Purchased Professional and Technical Services</u>				
	322 Professional Educational Services – lus				690.00
	329 Professional Educational Services – Other				777.50
	330 Other Professional Services				5,016.76
	340 Technical Services				125,153.41
	360 Employee Training and Development Services				30,193.35
	390 Other Purchased Professional and Technical Services				11,704.27
Total Purchased Professional and Technical Services					\$173,535.29
400	<u>Purchased Property Services</u>				
	430 Repairs and Maintenance Services				335,652.15
Total Purchased Property Services					\$335,652.15
500	<u>Other Purchased Services</u>				
	530 Communications				150.00
	549 Other Advertising/Public Relations				5,059.60
	580 Travel				42,466.17
Total Other Purchased Services					\$47,675.77
600	<u>Supplies</u>				
	610 General Supplies				51,089.05
	640 Books and Periodicals				129.48
	650 Supplies & Fees – Technology Related				973,023.37
Total Supplies					\$1,024,241.90
800	<u>Other Objects</u>				
	810 Dues and Fees				1,441.80
Total Other Objects					\$1,441.80
Total 2800 Support Services – Central					\$5,124,895.77

General Fund (10)

2810 Planning, Research, Development and Evaluation Services

Elementary

Secondary

Federal

Total

100 Personnel Services – Salaries				
100 Personnel Services – Salaries				350,172.35
Total Personnel Services – Salaries				\$350,172.35
200 Personnel Services – Employee Benefits				
210 Group Insurance – Contracted Provider				74,095.03
220 Social Security Contributions				58,772.18
230 PSERS Retirement Contributions				122,596.05
250 Unemployment Compensation				136.77
260 Workers' Compensation				2,666.43
Total Personnel Services – Employee Benefits				\$258,266.46
500 Other Purchased Services				
580 Travel				111.16
Total Other Purchased Services				\$111.16
600 Supplies				
610 General Supplies				7,350.46
Total Supplies				\$7,350.46
Total 2810 Planning, Research, Development and Evaluation Services				\$615,900.43

General Fund (10)

2820 Information Services

Elementary Secondary Federal Total

100	<u>Personnel Services – Salaries</u>			
	100 Personnel Services – Salaries			243,475.74
Total Personnel Services – Salaries				\$243,475.74
200	<u>Personnel Services – Employee Benefits</u>			
	210 Group Insurance – Contracted Provider			49,640.87
	220 Social Security Contributions			22,567.68
	230 PSERS Retirement Contributions			85,034.09
	250 Unemployment Compensation			52.52
	260 Workers' Compensation			1,023.85
Total Personnel Services – Employee Benefits				\$158,319.01
500	<u>Other Purchased Services</u>			
	530 Communications			150.00
	549 Other Advertising/Public Relations			5,059.60
Total Other Purchased Services				\$5,209.60
600	<u>Supplies</u>			
	610 General Supplies			120.00
	640 Books and Periodicals			129.48
Total Supplies				\$249.48
Total 2820 Information Services				\$407,253.83

General Fund (10)

2821 Supervision of Information Services

Elementary

Secondary

Federal

Total

100 Personnel Services – Salaries

100 Personnel Services – Salaries

187,072.64

Total Personnel Services – Salaries

\$187,072.64

200 Personnel Services – Employee Benefits

210 Group Insurance – Contracted Provider

38,518.02

220 Social Security Contributions

20,390.06

230 PSERS Retirement Contributions

64,379.09

250 Unemployment Compensation

47.46

260 Workers' Compensation

925.06

Total Personnel Services – Employee Benefits

\$124,259.69

600 Supplies

610 General Supplies

120.00

640 Books and Periodicals

129.48

Total Supplies

\$249.48

Total 2821 Supervision of Information Services

\$311,581.81

LEA : 103026852 North Allegheny SD

Printed 10/30/2025 12:53:41 PM

General Fund (10)

2823 Public Information Services

Elementary

Secondary

Federal

Total

500 Other Purchased Services

530 Communications

150.00

Total Other Purchased Services

\$150.00

Total 2823 Public Information Services

\$150.00

LEA : 103026852 North Allegheny SD

Printed 10/30/2025 12:53:41 PM

General Fund (10)

2829 Other Information Services

Elementary

Secondary

Federal

Total

100 Personnel Services – Salaries

100 Personnel Services – Salaries

56,403.10

Total Personnel Services – Salaries

\$56,403.10

200 Personnel Services – Employee Benefits

210 Group Insurance – Contracted Provider

11,122.85

220 Social Security Contributions

2,177.62

230 PSERS Retirement Contributions

20,655.00

250 Unemployment Compensation

5.06

260 Workers' Compensation

98.79

Total Personnel Services – Employee Benefits

\$34,059.32

500 Other Purchased Services

549 Other Advertising/Public Relations

5,059.60

Total Other Purchased Services

\$5,059.60

Total 2829 Other Information Services

\$95,522.02

General Fund (10)

2830 Staff Services

	<u>Elementary</u>	<u>Secondary</u>	<u>Federal</u>	<u>Total</u>
100 Personnel Services – Salaries				
100 Personnel Services – Salaries				611,546.94
Total Personnel Services – Salaries				\$611,546.94
200 Personnel Services – Employee Benefits				
210 Group Insurance – Contracted Provider				154,246.56
220 Social Security Contributions				62,296.91
230 PSERS Retirement Contributions				222,246.75
250 Unemployment Compensation				143.75
260 Workers' Compensation				2,826.33
Total Personnel Services – Employee Benefits				\$441,760.30
300 Purchased Professional and Technical Services				
329 Professional Educational Services – Other				777.50
330 Other Professional Services				5,016.76
360 Employee Training and Development Services				30,193.35
390 Other Purchased Professional and Technical Services				11,704.27
Total Purchased Professional and Technical Services				\$47,691.88
500 Other Purchased Services				
580 Travel				40,523.49
Total Other Purchased Services				\$40,523.49
600 Supplies				
610 General Supplies				29,595.75
Total Supplies				\$29,595.75
800 Other Objects				
810 Dues and Fees				1,150.90
Total Other Objects				\$1,150.90
Total 2830 Staff Services				\$1,172,269.26

General Fund (10)

2831 Supervision of Staff Services

Elementary

Secondary

Federal

Total

100 Personnel Services – Salaries

100 Personnel Services – Salaries

209,582.75

Total Personnel Services – Salaries

\$209,582.75

200 Personnel Services – Employee Benefits

210 Group Insurance – Contracted Provider

42,430.74

220 Social Security Contributions

14,872.33

230 PSERS Retirement Contributions

76,777.70

250 Unemployment Compensation

34.61

260 Workers' Compensation

674.74

Total Personnel Services – Employee Benefits

\$134,790.12

500 Other Purchased Services

580 Travel

56.30

Total Other Purchased Services

\$56.30

600 Supplies

610 General Supplies

1,026.90

Total Supplies

\$1,026.90

Total 2831 Supervision of Staff Services

\$345,456.07

LEA : 103026852 North Allegheny SD

Printed 10/30/2025 12:53:41 PM

General Fund (10)

	<u>Elementary</u>	<u>Secondary</u>	<u>Federal</u>	<u>Total</u>
2832 Recruitment and Placement Services				
300 <u>Purchased Professional and Technical Services</u>				
329 Professional Educational Services – Other				777.50
Total Purchased Professional and Technical Services				\$777.50
800 <u>Other Objects</u>				
810 Dues and Fees				1,150.90
Total Other Objects				\$1,150.90
Total 2832 Recruitment and Placement Services				\$1,928.40

General Fund (10)

	<u>Elementary</u>	<u>Secondary</u>	<u>Federal</u>	<u>Total</u>
2834 Staff Development Services – Non-Instructional, Certified Staff Only				
300 <u>Purchased Professional and Technical Services</u>				
360 Employee Training and Development Services				16,729.00
Total Purchased Professional and Technical Services				\$16,729.00
500 <u>Other Purchased Services</u>				
580 Travel				18,942.81
Total Other Purchased Services				\$18,942.81
Total 2834 Staff Development Services – Non-Instructional, Certified Staff Only				\$35,671.81

General Fund (10)

2835 Health Services

Elementary

Secondary

Federal

Total

300 Purchased Professional and Technical Services

330 Other Professional Services

979.00

Total Purchased Professional and Technical Services

\$979.00

Total 2835 Health Services

\$979.00

General Fund (10)

2836 Staff Development Services – Non-Instructional, Non-Certified Staff Only

Elementary

Secondary

Federal

Total

300 Purchased Professional and Technical Services

360 Employee Training and Development Services

13,464.35

390 Other Purchased Professional and Technical Services

11,704.27

Total Purchased Professional and Technical Services

\$25,168.62

500 Other Purchased Services

580 Travel

21,524.38

Total Other Purchased Services

\$21,524.38

Total 2836 Staff Development Services – Non-Instructional, Non-Certified Staff Only

\$46,693.00

General Fund (10)

2839 Other Staff Services

	<u>Elementary</u>	<u>Secondary</u>	<u>Federal</u>	<u>Total</u>
100 Personnel Services – Salaries				
100 Personnel Services – Salaries				401,964.19
Total Personnel Services – Salaries				\$401,964.19
200 Personnel Services – Employee Benefits				
210 Group Insurance – Contracted Provider				111,815.82
220 Social Security Contributions				47,424.58
230 PSERS Retirement Contributions				145,469.05
250 Unemployment Compensation				109.14
260 Workers' Compensation				2,151.59
Total Personnel Services – Employee Benefits				\$306,970.18
300 Purchased Professional and Technical Services				
330 Other Professional Services				4,037.76
Total Purchased Professional and Technical Services				\$4,037.76
600 Supplies				
610 General Supplies				28,568.85
Total Supplies				\$28,568.85
Total 2839 Other Staff Services				\$741,540.98

General Fund (10)

2840 Data Processing Services

Elementary Secondary Federal Total

100	<u>Personnel Services – Salaries</u>			
	100 Personnel Services – Salaries			868,038.14
Total Personnel Services – Salaries				\$868,038.14
200	<u>Personnel Services – Employee Benefits</u>			
	210 Group Insurance – Contracted Provider			198,024.04
	220 Social Security Contributions			62,437.33
	230 PSERS Retirement Contributions			272,245.62
	250 Unemployment Compensation			145.31
	260 Workers' Compensation			2,832.70
Total Personnel Services – Employee Benefits				\$535,685.00
300	<u>Purchased Professional and Technical Services</u>			
	322 Professional Educational Services – lus			690.00
	340 Technical Services			125,153.41
Total Purchased Professional and Technical Services				\$125,843.41
400	<u>Purchased Property Services</u>			
	430 Repairs and Maintenance Services			335,652.15
Total Purchased Property Services				\$335,652.15
500	<u>Other Purchased Services</u>			
	580 Travel			1,831.52
Total Other Purchased Services				\$1,831.52
600	<u>Supplies</u>			
	610 General Supplies			14,022.84
	650 Supplies & Fees – Technology Related			973,023.37
Total Supplies				\$987,046.21
800	<u>Other Objects</u>			
	810 Dues and Fees			290.90
Total Other Objects				\$290.90
Total 2840 Data Processing Services				\$2,854,387.33

General Fund (10)

	<u>Elementary</u>	<u>Secondary</u>	<u>Federal</u>	<u>Total</u>
2890 Other Support Services Central				
100 Personnel Services – Salaries				
100 Personnel Services – Salaries				45,293.60
Total Personnel Services – Salaries				\$45,293.60
200 Personnel Services – Employee Benefits				
210 Group Insurance – Contracted Provider				8,575.78
220 Social Security Contributions				4,589.34
230 PSERS Retirement Contributions				16,407.30
250 Unemployment Compensation				10.68
260 Workers' Compensation				208.22
Total Personnel Services – Employee Benefits				\$29,791.32
Total 2890 Other Support Services Central				\$75,084.92

General Fund (10)

2900 Other Support Services

Elementary

Secondary

Federal

Total

500 Other Purchased Services

595 IU Payments By Withholding

182,207.63

Total Other Purchased Services

\$182,207.63

Total 2900 Other Support Services

\$182,207.63

LEA : 103026852 North Allegheny SD

Printed 10/30/2025 12:53:41 PM

General Fund (10)

2910 Support Services Not Listed Elsewhere In the 2000 Series

Elementary

Secondary

Federal

Total

500 Other Purchased Services

595 IU Payments By Withholding

182,207.63

Total Other Purchased Services

\$182,207.63

Total 2910 Support Services Not Listed Elsewhere In the 2000 Series

\$182,207.63

LEA : 103026852 North Allegheny SD

Printed 10/30/2025 12:53:57 PM

General Fund (10)

3000 Operation of Non-Instructional Services

Total

100 Personnel Services – Salaries

100 Personnel Services – Salaries	(75.00)
110 Official / Administrative Salaries	165,058.55
120 Professional – Educational	35,775.00
130 Professional – Other	2,095,204.38
150 Office / Clerical	93,670.44
170 Operative and Laborer	17,570.69

Total Personnel Services – Salaries \$2,407,204.06

200 Personnel Services – Employee Benefits

210 Group Insurance – Contracted Provider	54,787.41
220 Social Security Contributions	159,941.47
230 PSERS Retirement Contributions	794,308.77
250 Unemployment Compensation	252.15
260 Workers’ Compensation	7,256.25

Total Personnel Services – Employee Benefits \$1,016,546.05

300 Purchased Professional and Technical Services

330 Other Professional Services	184,365.20
340 Technical Services	89,363.70
390 Other Purchased Professional and Technical Services	56,533.90

Total Purchased Professional and Technical Services \$330,262.80

400 Purchased Property Services

410 Cleaning Services	35,145.80
430 Repairs and Maintenance Services	28,037.96
440 Rentals	27,009.25

Total Purchased Property Services \$90,193.01

500 Other Purchased Services

510 Student Transportation Services	38,094.70
520 Insurance – General	38,850.00
549 Other Advertising/Public Relations	50,884.82
580 Travel	149,854.93

Total Other Purchased Services \$277,684.45

600 Supplies

610 General Supplies	327,458.56
650 Supplies & Fees – Technology Related	25,356.38

Total Supplies \$352,814.94

700 Property

752 Capital Equipment – Original and Additional	28,141.95
---	-----------

Total Property \$28,141.95

800 Other Objects

810 Dues and Fees	21,804.48
890 Miscellaneous Expenditures	189,180.30

LEA : 103026852 North Allegheny SD

Printed 10/30/2025 12:53:57 PM

General Fund (10)

3000 Operation of Non-Instructional Services

	<u>Total</u>
Total Other Objects	\$210,984.78
Total 3000 Operation of Non-Instructional Services	\$4,713,832.04

LEA : 103026852 North Allegheny SD

Printed 10/30/2025 12:53:57 PM

General Fund (10)

3200 Student Activities

Elementary Secondary Federal Total

100	<u>Personnel Services – Salaries</u>				
	110 Official / Administrative Salaries				165,058.55
	120 Professional – Educational				35,775.00
	130 Professional – Other				2,095,204.38
	150 Office / Clerical				93,670.44
	170 Operative and Laborer				17,570.69
Total Personnel Services – Salaries					\$2,407,279.06
200	<u>Personnel Services – Employee Benefits</u>				
	210 Group Insurance – Contracted Provider				54,787.41
	220 Social Security Contributions				159,941.47
	230 PSERS Retirement Contributions				794,308.77
	250 Unemployment Compensation				252.15
	260 Workers' Compensation				7,256.25
Total Personnel Services – Employee Benefits					\$1,016,546.05
300	<u>Purchased Professional and Technical Services</u>				
	330 Other Professional Services				184,365.20
	340 Technical Services				89,363.70
	390 Other Purchased Professional and Technical Services				16,350.00
Total Purchased Professional and Technical Services					\$290,078.90
400	<u>Purchased Property Services</u>				
	410 Cleaning Services				35,145.80
	430 Repairs and Maintenance Services				28,037.96
	440 Rentals				27,009.25
Total Purchased Property Services					\$90,193.01
500	<u>Other Purchased Services</u>				
	510 Student Transportation Services				38,094.70
	520 Insurance – General				38,850.00
	549 Other Advertising/Public Relations				50,884.82
	580 Travel				149,854.93
Total Other Purchased Services					\$277,684.45
600	<u>Supplies</u>				
	610 General Supplies				327,037.52
	650 Supplies & Fees – Technology Related				25,356.38
Total Supplies					\$352,393.90
700	<u>Property</u>				
	752 Capital Equipment – Original and Additional				28,141.95
Total Property					\$28,141.95
800	<u>Other Objects</u>				
	810 Dues and Fees				21,804.48
	890 Miscellaneous Expenditures				150,704.84
Total Other Objects					\$172,509.32
Total 3200 Student Activities					\$4,634,826.64

General Fund (10)

3300 Community Services

Elementary Secondary Federal Total

100	<u>Personnel Services – Salaries</u>			
	100 Personnel Services – Salaries			(75.00)
	Total Personnel Services – Salaries			(\$75.00)
300	<u>Purchased Professional and Technical Services</u>			
	390 Other Purchased Professional and Technical Services			40,183.90
	Total Purchased Professional and Technical Services			\$40,183.90
600	<u>Supplies</u>			
	610 General Supplies			421.04
	Total Supplies			\$421.04
800	<u>Other Objects</u>			
	890 Miscellaneous Expenditures			38,475.46
	Total Other Objects			\$38,475.46
	Total 3300 Community Services			\$79,005.40

General Fund (10)

4000 Facilities Acquisition, Construction and Improvement Services

Total

300 Purchased Professional and Technical Services

330 Other Professional Services

4,243.87

Total Purchased Professional and Technical Services

\$4,243.87

400 Purchased Property Services

430 Repairs and Maintenance Services

5,067.28

490 Other Purchased Property Services

210.00

Total Purchased Property Services

\$5,277.28

700 Property

710 Land and Improvements

27,700.00

766 Capitalized Technology Equipment – Replacement

21,203.08

Total Property

\$48,903.08

Total 4000 Facilities Acquisition, Construction and Improvement Services

\$58,424.23

LEA : 103026852 North Allegheny SD

Printed 10/30/2025 12:54:11 PM

General Fund (10)

4200 Existing Site Improvement Services

Elementary

Secondary

Federal

Total

700 Property

710 Land and Improvements

27,700.00

Total Property

\$27,700.00

Total 4200 Existing Site Improvement Services

\$27,700.00

General Fund (10)

	<u>Elementary</u>	<u>Secondary</u>	<u>Federal</u>	<u>Total</u>
4600 Existing Building Improvement Services				
300 <u>Purchased Professional and Technical Services</u>				
330 Other Professional Services				4,243.87
Total Purchased Professional and Technical Services				\$4,243.87
400 <u>Purchased Property Services</u>				
430 Repairs and Maintenance Services				5,067.28
490 Other Purchased Property Services				210.00
Total Purchased Property Services				\$5,277.28
700 <u>Property</u>				
766 Capitalized Technology Equipment – Replacement				21,203.08
Total Property				\$21,203.08
Total 4600 Existing Building Improvement Services				\$30,724.23

General Fund (10)

5000 Other Expenditures and Financing Uses

Total

800 Other Objects

830 Interest	5,255,401.27
880 Refunds of Prior Years' Receipts	361,942.30

Total Other Objects	\$5,617,343.57
----------------------------	-----------------------

900 Other Uses of Funds

910 Redemption of Principal	12,560,047.78
932 Capital Reserve Fund Transfers Applicable To Fund 32	1,250,000.00
939 Other Fund Transfers	760,834.04

Total Other Uses of Funds	\$14,570,881.82
----------------------------------	------------------------

Total 5000 Other Expenditures and Financing Uses	\$20,188,225.39
---	------------------------

LEA : 103026852 North Allegheny SD

Printed 10/30/2025 12:54:27 PM

General Fund (10)

	<u>Elementary</u>	<u>Secondary</u>	<u>Federal</u>	<u>Total</u>
5100 Debt Service / Other Expenditures and Financing Uses				
800 Other Objects				
830 Interest				5,255,401.27
880 Refunds of Prior Years' Receipts				361,942.30
Total Other Objects				\$5,617,343.57
900 Other Uses of Funds				
910 Redemption of Principal				12,560,047.78
Total Other Uses of Funds				\$12,560,047.78
Total 5100 Debt Service / Other Expenditures and Financing Uses				\$18,177,391.35

General Fund (10)

	<u>Elementary</u>	<u>Secondary</u>	<u>Federal</u>	<u>Total</u>
5110 Debt Service				
800 Other Objects				
830 Interest				5,150,851.07
Total Other Objects				\$5,150,851.07
900 Other Uses of Funds				
910 Redemption of Principal				10,385,000.00
Total Other Uses of Funds				\$10,385,000.00
Total 5110 Debt Service				\$15,535,851.07

LEA : 103026852 North Allegheny SD

Printed 10/30/2025 12:54:27 PM

General Fund (10)

5130 Refund of Prior Year Revenues / Receipts

Elementary

Secondary

Federal

Total

800 Other Objects

880 Refunds of Prior Years' Receipts

361,942.30

Total Other Objects

\$361,942.30

Total 5130 Refund of Prior Year Revenues / Receipts

\$361,942.30

LEA : 103026852 North Allegheny SD

Printed 10/30/2025 12:54:27 PM

General Fund (10)

5140 Leases and Other Right-to-Use Arrangements

Elementary

Secondary

Federal

Total

800 Other Objects

830 Interest

104,550.20

Total Other Objects

\$104,550.20

900 Other Uses of Funds

910 Redemption of Principal

2,175,047.78

Total Other Uses of Funds

\$2,175,047.78

Total 5140 Leases and Other Right-to-Use Arrangements

\$2,279,597.98

LEA : 103026852 North Allegheny SD

Printed 10/30/2025 12:54:27 PM

General Fund (10)

5200 Interfund Transfers – Out

Elementary

Secondary

Federal

Total

900 Other Uses of Funds

932 Capital Reserve Fund Transfers Applicable To Fund 32

1,250,000.00

939 Other Fund Transfers

760,834.04

Total Other Uses of Funds

\$2,010,834.04

Total 5200 Interfund Transfers – Out

\$2,010,834.04

LEA : 103026852 North Allegheny SD

Printed 10/30/2025 12:54:27 PM

General Fund (10)

5230 Capital Projects Fund Transfers

Elementary

Secondary

Federal

Total

900 Other Uses of Funds

932 Capital Reserve Fund Transfers Applicable To Fund 32

1,250,000.00

939 Other Fund Transfers

750,000.00

Total Other Uses of Funds

\$2,000,000.00

Total 5230 Capital Projects Fund Transfers

\$2,000,000.00

General Fund (10)

5250 Enterprise Fund Transfers

Elementary

Secondary

Federal

Total

900 Other Uses of Funds

939 Other Fund Transfers

10,834.04

Total Other Uses of Funds

\$10,834.04

Total 5250 Enterprise Fund Transfers

\$10,834.04

LEA : 103026852 North Allegheny SD

Printed 10/30/2025 12:53:48 PM

Capital Reserve Fund - § 1431 (32)

2000 Support Services

Total

700 Property

752 Capital Equipment – Original and Additional

2,396,534.00

Total Property

\$2,396,534.00

Total 2000 Support Services

\$2,396,534.00

LEA : 103026852 North Allegheny SD

Printed 10/30/2025 12:53:48 PM

Capital Reserve Fund - § 1431 (32)

2700 Student Transportation Services

Elementary

Secondary

Federal

Total

700 Property

752 Capital Equipment – Original and Additional

2,396,534.00

Total Property

\$2,396,534.00

Total 2700 Student Transportation Services

\$2,396,534.00

LEA : 103026852 North Allegheny SD

Printed 10/30/2025 12:53:48 PM

Capital Reserve Fund - § 1431 (32)

2740 Vehicle Servicing and Maintenance Services

Elementary

Secondary

Federal

Total

700 Property

752 Capital Equipment – Original and Additional

2,396,534.00

Total Property

\$2,396,534.00

Total 2740 Vehicle Servicing and Maintenance Services

\$2,396,534.00

LEA : 103026852 North Allegheny SD

Printed 10/30/2025 12:54:19 PM

Capital Reserve Fund - § 1431 (32)

4000 Facilities Acquisition, Construction and Improvement Services

Total

700 Property

710 Land and Improvements

352,096.17

Total Property

\$352,096.17

Total 4000 Facilities Acquisition, Construction and Improvement Services

\$352,096.17

LEA : 103026852 North Allegheny SD

Printed 10/30/2025 12:54:19 PM

Capital Reserve Fund - § 1431 (32)

4100 Site Acquisition Services – Original and Additional

Elementary

Secondary

Federal

Total

700 Property

710 Land and Improvements

352,096.17

Total Property

\$352,096.17

Total 4100 Site Acquisition Services – Original and Additional

\$352,096.17

Other Capital Projects Fund (39)

1000 Instruction	<u>Total</u>
600 <u>Supplies</u>	
610 General Supplies	43,934.01
Total Supplies	\$43,934.01
700 <u>Property</u>	
756 Capitalized Technology Equipment – Original	1,102,230.00
Total Property	\$1,102,230.00
Total 1000 Instruction	\$1,146,164.01

LEA : 103026852 North Allegheny SD

Printed 10/30/2025 12:53:35 PM

Other Capital Projects Fund (39)

1100 Regular Programs – Elementary / Secondary

	<u>Elementary</u>	<u>Secondary</u>	<u>Federal</u>	<u>Total</u>
600 Supplies				
610 General Supplies	23,194.38	20,739.63		43,934.01
Total Supplies	\$23,194.38	\$20,739.63		\$43,934.01
700 Property				
756 Capitalized Technology Equipment – Original	824,222.66	278,007.34		1,102,230.00
Total Property	\$824,222.66	\$278,007.34		\$1,102,230.00
Total 1100 Regular Programs – Elementary / Secondary	\$847,417.04	\$298,746.97		\$1,146,164.01

LEA : 103026852 North Allegheny SD

Printed 10/30/2025 12:53:35 PM

Other Capital Projects Fund (39)

1110 Regular Programs

	<u>Elementary</u>	<u>Secondary</u>	<u>Federal</u>	<u>Total</u>
600 Supplies				
610 General Supplies	23,194.38	20,739.63		43,934.01
Total Supplies	\$23,194.38	\$20,739.63		\$43,934.01
700 Property				
756 Capitalized Technology Equipment – Original	824,222.66	278,007.34		1,102,230.00
Total Property	\$824,222.66	\$278,007.34		\$1,102,230.00
Total 1110 Regular Programs	\$847,417.04	\$298,746.97		\$1,146,164.01

Other Capital Projects Fund (39)

2000 Support Services

Total

300 Purchased Professional and Technical Services

330 Other Professional Services 4,500.00

Total Purchased Professional and Technical Services \$4,500.00

400 Purchased Property Services

430 Repairs and Maintenance Services 541,271.79

Total Purchased Property Services \$541,271.79

600 Supplies

610 General Supplies 44,087.51

650 Supplies & Fees – Technology Related 83,786.46

Total Supplies \$127,873.97

700 Property

752 Capital Equipment – Original and Additional 200,571.00

758 Capitalized Technology Software - Original 53,218.21

762 Capitalized Equipment - Replacement 34,998.67

Total Property \$288,787.88

800 Other Objects

810 Dues and Fees 4,500.00

Total Other Objects \$4,500.00

Total 2000 Support Services \$966,933.64

Other Capital Projects Fund (39)

2300 Support Services – Administration

Elementary

Secondary

Federal

Total

300 Purchased Professional and Technical Services

330 Other Professional Services

4,500.00

Total Purchased Professional and Technical Services

\$4,500.00

600 Supplies

650 Supplies & Fees – Technology Related

20,340.00

Total Supplies

\$20,340.00

Total 2300 Support Services – Administration

\$24,840.00

Other Capital Projects Fund (39)

2310 Board Services

Elementary

Secondary

Federal

Total

600 Supplies

650 Supplies & Fees – Technology Related

20,340.00

Total Supplies

\$20,340.00

Total 2310 Board Services

\$20,340.00

LEA : 103026852 North Allegheny SD

Printed 10/30/2025 12:53:51 PM

Other Capital Projects Fund (39)

2350 Legal and Accounting Services

Elementary

Secondary

Federal

Total

300 Purchased Professional and Technical Services

330 Other Professional Services

4,500.00

Total Purchased Professional and Technical Services

\$4,500.00

Total 2350 Legal and Accounting Services

\$4,500.00

LEA : 103026852 North Allegheny SD

Printed 10/30/2025 12:53:51 PM

Other Capital Projects Fund (39)

2500 Support Services – Business

Elementary

Secondary

Federal

Total

800 Other Objects

810 Dues and Fees

4,500.00

Total Other Objects

\$4,500.00

Total 2500 Support Services – Business

\$4,500.00

LEA : 103026852 North Allegheny SD

Printed 10/30/2025 12:53:51 PM

Other Capital Projects Fund (39)

2510 Fiscal Services

Elementary

Secondary

Federal

Total

800 Other Objects

810 Dues and Fees

4,500.00

Total Other Objects

\$4,500.00

Total 2510 Fiscal Services

\$4,500.00

LEA : 103026852 North Allegheny SD

Printed 10/30/2025 12:53:51 PM

Other Capital Projects Fund (39)

2519 Other Fiscal Services

Elementary

Secondary

Federal

Total

800 Other Objects

810 Dues and Fees

4,500.00

Total Other Objects

\$4,500.00

Total 2519 Other Fiscal Services

\$4,500.00

Other Capital Projects Fund (39)

	<u>Elementary</u>	<u>Secondary</u>	<u>Federal</u>	<u>Total</u>
2600 Operation and Maintenance of Plant Services				
400 Purchased Property Services				
430 Repairs and Maintenance Services				541,271.79
Total Purchased Property Services				\$541,271.79
600 Supplies				
610 General Supplies	3,696.32	40,391.19		44,087.51
650 Supplies & Fees – Technology Related				63,446.46
Total Supplies	\$3,696.32	\$40,391.19		\$107,533.97
700 Property				
752 Capital Equipment – Original and Additional				200,571.00
762 Capitalized Equipment - Replacement				34,998.67
Total Property				\$235,569.67
Total 2600 Operation and Maintenance of Plant Services	\$3,696.32	\$40,391.19		\$884,375.43

LEA : 103026852 North Allegheny SD

Printed 10/30/2025 12:53:51 PM

Other Capital Projects Fund (39)

	<u>Elementary</u>	<u>Secondary</u>	<u>Federal</u>	<u>Total</u>
2620 Operation of Buildings Services				
400 Purchased Property Services				
430 Repairs and Maintenance Services				155,504.45
Total Purchased Property Services				\$155,504.45
600 Supplies				
610 General Supplies	2,682.56	10,635.72		13,318.28
Total Supplies	\$2,682.56	\$10,635.72		\$13,318.28
Total 2620 Operation of Buildings Services	\$2,682.56	\$10,635.72		\$168,822.73

LEA : 103026852 North Allegheny SD

Printed 10/30/2025 12:53:51 PM

Other Capital Projects Fund (39)

	<u>Elementary</u>	<u>Secondary</u>	<u>Federal</u>	<u>Total</u>
2630 Care and Upkeep of Grounds Services				
400 <u>Purchased Property Services</u>				
430 Repairs and Maintenance Services				385,767.34
Total Purchased Property Services				\$385,767.34
600 <u>Supplies</u>				
610 General Supplies	1,013.76	906.47		1,920.23
Total Supplies	\$1,013.76	\$906.47		\$1,920.23
700 <u>Property</u>				
752 Capital Equipment – Original and Additional				200,571.00
Total Property				\$200,571.00
Total 2630 Care and Upkeep of Grounds Services	\$1,013.76	\$906.47		\$588,258.57

LEA : 103026852 North Allegheny SD

Printed 10/30/2025 12:53:51 PM

Other Capital Projects Fund (39)

	<u>Elementary</u>	<u>Secondary</u>	<u>Federal</u>	<u>Total</u>
2640 Care and Upkeep of Equipment Services				
600 Supplies				
610 General Supplies		28,849.00		28,849.00
Total Supplies		\$28,849.00		\$28,849.00
700 Property				
762 Capitalized Equipment - Replacement				34,998.67
Total Property				\$34,998.67
Total 2640 Care and Upkeep of Equipment Services		\$28,849.00		\$63,847.67

LEA : 103026852 North Allegheny SD

Printed 10/30/2025 12:53:51 PM

Other Capital Projects Fund (39)

2660 Safety and Security Services

Elementary

Secondary

Federal

Total

600 Supplies

650 Supplies & Fees – Technology Related

63,446.46

Total Supplies

\$63,446.46

Total 2660 Safety and Security Services

\$63,446.46

LEA : 103026852 North Allegheny SD

Printed 10/30/2025 12:53:51 PM

Other Capital Projects Fund (39)

2800 Support Services – Central

Elementary

Secondary

Federal

Total

700 Property

758 Capitalized Technology Software - Original

53,218.21

Total Property

\$53,218.21

Total 2800 Support Services – Central

\$53,218.21

LEA : 103026852 North Allegheny SD

Printed 10/30/2025 12:53:51 PM

Other Capital Projects Fund (39)

2830 Staff Services

Elementary

Secondary

Federal

Total

700 Property

758 Capitalized Technology Software - Original

53,218.21

Total Property

\$53,218.21

Total 2830 Staff Services

\$53,218.21

LEA : 103026852 North Allegheny SD

Printed 10/30/2025 12:53:51 PM

Other Capital Projects Fund (39)

2839 Other Staff Services

Elementary

Secondary

Federal

Total

700 Property

758 Capitalized Technology Software - Original

53,218.21

Total Property

\$53,218.21

Total 2839 Other Staff Services

\$53,218.21

LEA : 103026852 North Allegheny SD

Printed 10/30/2025 12:54:05 PM

Other Capital Projects Fund (39)

3000 Operation of Non-Instructional Services

Total

400 Purchased Property Services

450 Construction Services

2,426.12

Total Purchased Property Services

\$2,426.12

Total 3000 Operation of Non-Instructional Services

\$2,426.12

LEA : 103026852 North Allegheny SD

Printed 10/30/2025 12:54:05 PM

Other Capital Projects Fund (39)

3200 Student Activities

400 Purchased Property Services

450 Construction Services

Elementary

Secondary

Federal

Total

2,426.12

Total Purchased Property Services

\$2,426.12

Total 3200 Student Activities

\$2,426.12

Other Capital Projects Fund (39)

4000 Facilities Acquisition, Construction and Improvement Services

Total

300 Purchased Professional and Technical Services

330 Other Professional Services 443,741.82

Total Purchased Professional and Technical Services \$443,741.82

400 Purchased Property Services

450 Construction Services 1,121,666.43

Total Purchased Property Services \$1,121,666.43

700 Property

710 Land and Improvements 207,005.00

766 Capitalized Technology Equipment – Replacement 74,708.01

Total Property \$281,713.01

Total 4000 Facilities Acquisition, Construction and Improvement Services \$1,847,121.26

LEA : 103026852 North Allegheny SD

Printed 10/30/2025 12:54:23 PM

Other Capital Projects Fund (39)

4200 Existing Site Improvement Services

Elementary

Secondary

Federal

Total

400 Purchased Property Services

450 Construction Services

37,145.60

Total Purchased Property Services

\$37,145.60

700 Property

710 Land and Improvements

207,005.00

Total Property

\$207,005.00

Total 4200 Existing Site Improvement Services

\$244,150.60

LEA : 103026852 North Allegheny SD

Printed 10/30/2025 12:54:23 PM

Other Capital Projects Fund (39)

4400 Architecture and Engineering Services / Educational Specifications – Improvements

Elementary

Secondary

Federal

Total

300 Purchased Professional and Technical Services

330 Other Professional Services

440,390.56

Total Purchased Professional and Technical Services

\$440,390.56

Total 4400 Architecture and Engineering Services / Educational Specifications – Improvements

\$440,390.56

Other Capital Projects Fund (39)

4500 Building Acquisition and Construction Services – Original and Additional

Elementary

Secondary

Federal

Total

400 Purchased Property Services

450 Construction Services

36,297.82

Total Purchased Property Services

\$36,297.82

Total 4500 Building Acquisition and Construction Services – Original and Additional

\$36,297.82

LEA : 103026852 North Allegheny SD

Printed 10/30/2025 12:54:23 PM

Other Capital Projects Fund (39)

	<u>Elementary</u>	<u>Secondary</u>	<u>Federal</u>	<u>Total</u>
4600 Existing Building Improvement Services				
300 <u>Purchased Professional and Technical Services</u>				
330 Other Professional Services				3,351.26
Total Purchased Professional and Technical Services				\$3,351.26
400 <u>Purchased Property Services</u>				
450 Construction Services				1,048,223.01
Total Purchased Property Services				\$1,048,223.01
700 <u>Property</u>				
766 Capitalized Technology Equipment – Replacement				74,708.01
Total Property				\$74,708.01
Total 4600 Existing Building Improvement Services				\$1,126,282.28

LEA : 103026852 North Allegheny SD

Printed 10/30/2025 12:54:32 PM

Other Capital Projects Fund (39)

5000 Other Expenditures and Financing Uses

Total

800 Other Objects

880 Refunds of Prior Years' Receipts

125.00

Total Other Objects

\$125.00

Total 5000 Other Expenditures and Financing Uses

\$125.00

LEA : 103026852 North Allegheny SD

Printed 10/30/2025 12:54:32 PM

Other Capital Projects Fund (39)

5100 Debt Service / Other Expenditures and Financing Uses

Elementary

Secondary

Federal

Total

800 Other Objects

880 Refunds of Prior Years' Receipts

125.00

Total Other Objects

\$125.00

Total 5100 Debt Service / Other Expenditures and Financing Uses

\$125.00

LEA : 103026852 North Allegheny SD

Printed 10/30/2025 12:54:32 PM

Other Capital Projects Fund (39)

5130 Refund of Prior Year Revenues / Receipts

Elementary

Secondary

Federal

Total

800 Other Objects

880 Refunds of Prior Years' Receipts

125.00

Total Other Objects

\$125.00

Total 5130 Refund of Prior Year Revenues / Receipts

\$125.00

	<u>General Fund(10)</u>	<u>Student Sponsored Activity Fund(21)</u>	<u>Public Purpose Trust(27)</u>	<u>Other Compt Approved (28)</u>	<u>Athletic / Activity(29)</u>
1000 Instruction					
1100 Regular Programs - Elementary / Secondary	88,275,384.38				
1200 Special Programs - Elementary / Secondary	24,579,034.60				
1300 Vocational Education	1,238,346.72				
1400 Other Instructional Programs - Elementary / Secondary	11,732.09				
Total Instruction	\$114,104,497.79				
2000 Support Services					
2100 Support Services - Students	7,334,985.86				
2200 Support Services - Instructional Staff	4,925,889.37				
2300 Support Services - Administration	10,068,026.51				
2400 Support Services - Pupil Health	2,214,482.71				
2500 Support Services - Business	1,747,057.12				
2600 Operation and Maintenance of Plant Services	15,378,546.53				
2700 Student Transportation Services	13,769,213.68				
2800 Support Services - Central	5,124,895.77				
2900 Other Support Services	182,207.63				
Total Support Services	\$60,745,305.18				
3000 Operation of Non-Instructional Services					
3200 Student Activities	4,634,826.64				
3300 Community Services	79,005.40				
Total Operation of Non-Instructional Services	\$4,713,832.04				
4000 Facilities Acquisition, Construction and Improvement Services					
4100 Site Acquisition Services - Original and Additional					
4200 Existing Site Improvement Services	27,700.00				
4400 Architecture and Engineering Services / Educational Specifications - Improvements					
4500 Building Acquisition and Construction Services - Original and Additional					
4600 Existing Building Improvement Services	30,724.23				
Total Facilities Acquisition, Construction and Improvement Services	\$58,424.23				
5000 Other Expenditures and Financing Uses					
5100 Debt Service / Other Expenditures and Financing Uses	18,177,391.35				
5200 Interfund Transfers - Out	2,010,834.04				
Total Other Expenditures and Financing Uses	\$20,188,225.39				
TOTAL ACTUAL EXPENDITURES & OTHER FINANCING USES	\$199,810,284.63				

	<u>Capital Reserve (690. 1850)(31)</u>	<u>Capital Reserve (1431)(32)</u>	<u>Other Capital Projects Fund(39)</u>	<u>Debt Service(40)</u>	<u>Permanent(90)</u>
1000 Instruction					
1100 Regular Programs - Elementary / Secondary			1,146,164.01		
1200 Special Programs - Elementary / Secondary					
1300 Vocational Education					
1400 Other Instructional Programs - Elementary / Secondary					
Total Instruction			\$1,146,164.01		
2000 Support Services					
2100 Support Services - Students					
2200 Support Services - Instructional Staff					
2300 Support Services - Administration			24,840.00		
2400 Support Services - Pupil Health					
2500 Support Services - Business			4,500.00		
2600 Operation and Maintenance of Plant Services			884,375.43		
2700 Student Transportation Services	2,396,534.00				
2800 Support Services - Central			53,218.21		
2900 Other Support Services					
Total Support Services	\$2,396,534.00		\$966,933.64		
3000 Operation of Non-Instructional Services					
3200 Student Activities			2,426.12		
3300 Community Services					
Total Operation of Non-Instructional Services			\$2,426.12		
4000 Facilities Acquisition, Construction and Improvement Services					
4100 Site Acquisition Services - Original and Additional	352,096.17				
4200 Existing Site Improvement Services			244,150.60		
4400 Architecture and Engineering Services / Educational Specifications - Improvements			440,390.56		
4500 Building Acquisition and Construction Services - Original and Additional			36,297.82		
4600 Existing Building Improvement Services			1,126,282.28		
Total Facilities Acquisition, Construction and Improvement Services	\$352,096.17		\$1,847,121.26		
5000 Other Expenditures and Financing Uses					
5100 Debt Service / Other Expenditures and Financing Uses			125.00		
5200 Interfund Transfers - Out					
Total Other Expenditures and Financing Uses			\$125.00		
TOTAL ACTUAL EXPENDITURES & OTHER FINANCING USES	\$2,748,630.17		\$3,962,770.03		

Total

1000 Instruction	
1100 Regular Programs - Elementary / Secondary	89,421,548.39
1200 Special Programs - Elementary / Secondary	24,579,034.60
1300 Vocational Education	1,238,346.72
1400 Other Instructional Programs - Elementary / Secondary	11,732.09

Total Instruction \$115,250,661.80

2000 Support Services	
2100 Support Services - Students	7,334,985.86
2200 Support Services - Instructional Staff	4,925,889.37
2300 Support Services - Administration	10,092,866.51
2400 Support Services - Pupil Health	2,214,482.71
2500 Support Services - Business	1,751,557.12
2600 Operation and Maintenance of Plant Services	16,262,921.96
2700 Student Transportation Services	16,165,747.68
2800 Support Services - Central	5,178,113.98
2900 Other Support Services	182,207.63

Total Support Services \$64,108,772.82

3000 Operation of Non-Instructional Services	
3200 Student Activities	4,637,252.76
3300 Community Services	79,005.40

Total Operation of Non-Instructional Services \$4,716,258.16

4000 Facilities Acquisition, Construction and Improvement Services	
4100 Site Acquisition Services - Original and Additional	352,096.17
4200 Existing Site Improvement Services	271,850.60
4400 Architecture and Engineering Services / Educational Specifications - Improvements	440,390.56
4500 Building Acquisition and Construction Services - Original and Additional	36,297.82
4600 Existing Building Improvement Services	1,157,006.51

Total Facilities Acquisition, Construction and Improvement Services \$2,257,641.66

5000 Other Expenditures and Financing Uses	
5100 Debt Service / Other Expenditures and Financing Uses	18,177,516.35
5200 Interfund Transfers - Out	2,010,834.04

Total Other Expenditures and Financing Uses \$20,188,350.39

TOTAL ACTUAL EXPENDITURES & OTHER FINANCING USES \$206,521,684.83

LEA : 103026852 North Allegheny SD

Printed 10/30/2025 12:54:51 PM

PSERS Salary Data (Salary Data should relate to the General Fund only)

Amount Description	Amount
Total Salary Base for salaries subject to PSERS withholding	91,514,711.78
Total Federally Funded salaries subject to PSERS withholding	1,065,490.00
	<hr/>

Title I Expenditure Data

Amount Description	Amount
Expenditures Funded with Current Title I Funds	268,557.00
Total Title I Expenditure Data	\$268,557.00
	<hr/>

Title IV Revenue Data

Amount Description	Amount
Revenue from Title IV-A-1: Student Support and Academic Enrichment Grants	17,323.56
	<hr/>

1.	<u>Current Special Education Expenditures within Function 1000</u> See list of exclusions in the note below.	20,534,128.66
2.	<u>Current Special Education Expenditures within Function 2000</u> See list of exclusions in the note below.	3,572,758.99
2A.	<u>Current Special Education Expenditures within Sub-Function 2100</u> This data should also be included in line 2 above. See list of exclusions in the note below.	8,071.23
2B.	<u>Current Special Education Expenditures within Sub-Function 2200</u> This data should also be included in line 2 above. See list of exclusions in the note below.	677,612.07
2C.	<u>Current Special Education Expenditures within Sub-Function 2700</u> This data should also be included in line 2 above. See list of exclusions in the note below.	2,849,341.74
3.	<u>Current Special Education Expenditures within Sub-Function 3100</u> See list of exclusions in the note below.	
4.	<u>Current Special Education Expenditures within Sub-Function 3200</u> See list of exclusions in the note below.	

Note: The Current Special Education Expenditure amounts for each line should be calculated as follows:

- * Include the total expenditures for special education costs from all governmental funds and the food service fund 51 for the function/sub-function requested
- * Exclude data from sub-functions: 1243,1450,1500,1600,1807,2280,2450,2750,2990
- * Exclude data from objects: 322,511,512,516,561,562,564,566,592,593,594,595,596,597,700,830,899

Benefits for Staff Relative to Collective Bargaining Agreements

	OBJECT	COVERED	NOT COVERED	TOTAL
10 General Fund	No Self Insurance data to report			
	211 Medical Insurance	15,660,165.98	1,828,960.92	17,489,126.90
	212 Dental Insurance	721,034.02	81,986.35	803,020.37
	215 Eye Care Insurance	81,901.90	9,139.70	91,041.60
	216 Prescription Insurance			
	271 Self-Insurance Medical Benefits			
	272 Self-Insurance Dental Benefits			
	275 Self-Insurance Eye Care Benefits			
	276 Self-Insurance Prescription Benefits			
	FUND TOTAL		\$16,463,101.90	\$1,920,086.97
50 Enterprise Fund	No Self Insurance data to report			
	211 Medical Insurance			
	212 Dental Insurance			
	215 Eye Care Insurance			
	216 Prescription Insurance			
	271 Self-Insurance Medical Benefits			
	272 Self-Insurance Dental Benefits			
	275 Self-Insurance Eye Care Benefits			
	276 Self-Insurance Prescription Benefits			
	FUND TOTAL			
60 Internal Service Fund	No Self Insurance data to report			
	211 Medical Insurance			
	212 Dental Insurance			
	215 Eye Care Insurance			
	216 Prescription Insurance			
	271 Self-Insurance Medical Benefits			
	272 Self-Insurance Dental Benefits			
	275 Self-Insurance Eye Care Benefits			
	276 Self-Insurance Prescription Benefits			
	FUND TOTAL			
Total of All Funds		\$16,463,101.90	\$1,920,086.97	\$18,383,188.87

LEA : 103026852 North Allegheny SD

Printed 10/30/2025 12:55:01 PM

Function	Special Education (Prior Year)	Nonspecial Education (Prior Year)	Total (Prior Year)	Special Education (Current Year)	Nonspecial Education (Current Year)	Total (Current Year)
2120 Guidance Services	648,705.07	4,156,517.67	4,805,222.74	659,079.31	4,082,498.45	4,741,577.76
2140 Psychological Services	98,071.33	628,382.98	726,454.31	101,532.26	628,915.64	730,447.90
2150 Speech Pathology and Audiology Services						
2160 Social Work Services	68,104.89	436,375.74	504,480.63	88,763.23	549,821.17	638,584.40
2260 Instruction and Curriculum Development Services	616,029.72	966,934.51	1,582,964.23	820,099.61	898,753.01	1,718,852.62
2350 Legal and Accounting Services	109,775.48	418,518.88	528,294.36	83,881.11	345,838.04	429,719.15
2420 Medical Services	3,399.20	21,780.08	25,179.28	4,278.37	26,501.27	30,779.64
2440 Nursing Services	281,794.60	1,805,572.81	2,087,367.41	302,671.26	1,874,819.81	2,177,491.07
2700 Student Transportation Services	3,543,117.20	9,827,056.57	13,370,173.77	3,792,751.26	9,969,312.42	13,762,063.68
Total	\$5,368,997.49	\$18,261,139.24	\$23,630,136.73	\$5,853,056.41	\$18,376,459.81	\$24,229,516.22

LEA : 103026852 North Allegheny SD

Printed 10/30/2025 12:55:06 PM

(PRINCIPAL AMOUNTS ONLY)

GOVERNMENTAL FUNDS/ ACTIVITIES

	Short-Term Borrowing	General Obligation Bonds/Notes	Authority Building Obligations	Leases, Other Right to Use Arrangements	Extended Term Financing Agreements	Other Long Term Debt/Liabilities	OPEB, Comp Abs, Net Pension Liab	Total
1. Debt at Beginning of Fiscal Year		92,320,000.00		5,118,156.63		31,421,554.00	293,975,038.00	422,834,748.63
2. Additional Debt Incurred During Year				1,208,828.52			2,062,935.00	3,271,763.52
3. Retirements and Repayments		490,000.00		2,175,047.78		10,196,072.00	11,524,000.00	24,385,119.78
4. Debt at End of Fiscal Year		91,830,000.00		4,151,937.37		21,225,482.00	284,513,973.00	401,721,392.37
5. Accreted Interest at End Of Fiscal Year								
6. Total Debt and Accreted Interest		91,830,000.00		4,151,937.37		21,225,482.00	284,513,973.00	401,721,392.37
7. Current Portion P&I - Due within 1 year		4,075,087.50		1,999,049.82		11,753,149.68	2,117,016.00	19,944,303.00
8. Interest Paid during current fiscal year		3,735,650.00		104,550.20		1,449,775.81		5,289,976.01

(PRINCIPAL AMOUNTS ONLY)

PROPRIETARY FUNDS

- 1. Debt at Beginning of Fiscal Year
- 2. Additional Debt Incurred During Year
- 3. Retirements and Repayments
- 4. Debt at End of Fiscal Year
- 5. Accreted Interest at End Of Fiscal Year
- 6. Total Debt and Accreted Interest
- 7. Current Portion P&I - Due within 1 year
- 8. Interest Paid during current fiscal year

Total Principal and Interest Payments Made by Your School - All Funds

Function	Fund		Principal (910)	Principal (920)	Interest (830)	Total (Principal +Interest)	Misc Other Uses (990)
5110	10	General Fund	10,385,000.00		5,150,851.07	15,535,851.07	
5110	20	Special Revenue Funds					
5110	30	Capital Projects Funds					
5110	40	Debt Service Fund					
5110	90	Permanent Fund					
5120	10	General Fund					
5120	20	Special Revenue Funds					
5120	30	Capital Projects Funds					
5120	40	Debt Service Fund					
5140	10	General Fund	2,175,047.78		104,550.20	2,279,597.98	
5140	20	Special Revenue Funds					
5140	30	Capital Projects Funds					
5140	40	Debt Service Fund					
5140	90	Permanent Fund					
Total Debt Payments - Governmental Funds			\$12,560,047.78		\$5,255,401.27	\$17,815,449.05	

Function	Fund		Principal (910)	Principal (920)	Interest (830)	Total (Principal +Interest)
5110	50	Enterprise Fund				
5110	60	Internal Service Fund				
5120	50	Enterprise Fund				
5120	60	Internal Service Fund				
5140	50	Enterprise Fund				
5140	60	Internal Service Fund				
Total Debt Payments - Proprietary Funds						

LEA : 103026852 North Allegheny SD

Printed 10/30/2025 12:55:06 PM

Debt Details
Governmental Funds/ Activities

Debt Category	Debt Issue Date (MM/YYYY)	Principal Amounts Only				Current Portion Due Within One Year (Principal and Interest)	Interest Paid During Fiscal Year
		Debt at Beginning of Fiscal Year	Additions	Reductions / Repayments	Debt at End of Fiscal Year		
General Obligation Bonds/Notes – CIB	05/2019	58,525,000.00		340,000.00	58,185,000.00	2,664,000.00	2,326,000.00
General Obligation Bonds/Notes – CIB	09/2015	33,795,000.00		150,000.00	33,645,000.00	1,411,087.50	1,409,650.00
Leases and Other Right to Use Arrangements		5,118,156.63	1,208,828.52	2,175,047.78	4,151,937.37	1,999,049.82	104,550.20
Other Long Term Debt/Liabilities		31,421,554.00		10,196,072.00	21,225,482.00	11,753,149.68	1,449,775.81
Compensated Absences		13,928,520.00	78,896.00		14,007,416.00	917,016.00	
Other Post-Employment Benefits (OPEB)		37,551,518.00	1,984,039.00	68,000.00	39,467,557.00	1,200,000.00	
Net Pension Liability		242,495,000.00		11,456,000.00	231,039,000.00		
Totals for Debt Entered:		\$422,834,748.63	\$3,271,763.52	\$24,385,119.78	\$401,721,392.37	\$19,944,303.00	\$5,289,976.01

General Fund (10)

Section 1: Tuition/Purchased Services as Reported within Expenditure Detail

	Amount
Tuition Reported in General Fund Expenditures 1000-560	5,230,821.46
Purchased Services in General Fund Expenditures 1000-594 and 1000-597	
Section 1 Total	\$5,230,821.46

Section 2: Tuition Paid to Institution Types During Fiscal Year

	Tuition Paid For Nonspecial Education	Tuition Paid For Special Education	Total
1 1306 Institutions	3,243.90	114,330.19	117,574.09
2 Institutionalized Children's Programs			
3 Juveniles Incarcerated in Adult Facilities			
4 Residential Treatment Facilities			
5 Other Local Education Agencies			
6 Brick and Mortar Charter Schools	477,982.21	138,060.36	616,042.57
7 Cyber Charter Schools	1,209,469.14	517,927.31	1,727,396.45
8 Career and Technology Centers	1,238,346.72		1,238,346.72
9 Approved Private Schools		665,102.36	665,102.36
10 PA Chartered Schools for the Deaf and Blind			
11 Private Residential Rehabilitative Institutions			
12 Juvenile Detention Centers			
13 Special Program Jointures			
14 Other Tuition Not Included Elsewhere In This Section	25,401.00	840,958.27	866,359.27
Section 2 Total	\$2,954,442.97	\$2,276,378.49	\$5,230,821.46

1 .	<u>Student Transportation Services for Educational Field Trips</u>	38,769.24
2 .	<u>Student Transportation Services for Student Activities</u>	55,665.39
3 .	<u>Rental of Vehicles for Student Transportation Services</u>	1,500.00
4 .	<u>Capital Reserve Funds</u>	2,396,534.00

Include only district-owned transportation expenditures paid from State or local money.
 DO NOT include federal expenditures or payments to contract service providers.
 Contracted transportation services should not be recorded on this schedule.

LEA : 103026852 North Allegheny SD

Printed 10/30/2025 12:55:18 PM

Food Service / Cafeteria Operations Fund (51)

3000 Operation of Non-Instructional Services

Total

300 Purchased Professional and Technical Services

340 Technical Services 4,967.00

Total Purchased Professional and Technical Services \$4,967.00

400 Purchased Property Services

430 Repairs and Maintenance Services 68,486.93

Total Purchased Property Services \$68,486.93

500 Other Purchased Services

570 Food Service Management 3,886,149.16

Total Other Purchased Services \$3,886,149.16

600 Supplies

610 General Supplies 32,851.12

630 Food 343,357.36

Total Supplies \$376,208.48

700 Property

740 Depreciation 128,044.67

Total Property \$128,044.67

Total 3000 Operation of Non-Instructional Services \$4,463,856.24

Food Service / Cafeteria Operations Fund (51)

	<u>Elementary</u>	<u>Secondary</u>	<u>Federal</u>	<u>Total</u>
3100 Food Services				
300 <u>Purchased Professional and Technical Services</u>				
340 Technical Services				4,967.00
Total Purchased Professional and Technical Services				\$4,967.00
400 <u>Purchased Property Services</u>				
430 Repairs and Maintenance Services				68,486.93
Total Purchased Property Services				\$68,486.93
500 <u>Other Purchased Services</u>				
570 Food Service Management				3,886,149.16
Total Other Purchased Services				\$3,886,149.16
600 <u>Supplies</u>				
610 General Supplies				32,851.12
630 Food				343,357.36
Total Supplies				\$376,208.48
700 <u>Property</u>				
740 Depreciation				128,044.67
Total Property				\$128,044.67
Total 3100 Food Services				\$4,463,856.24

	<u>Food Service(51)</u>	<u>Child Care Operations(52)</u>	<u>Other Enterprise(58)</u>	<u>Internal Service(60)</u>	<u>Total</u>
3000 <u>Operation of Non-Instructional Services</u>					
3100 Food Services	4,463,856.24				4,463,856.24
Total Operation of Non-Instructional Services	\$4,463,856.24				\$4,463,856.24
TOTAL ACTUAL EXPENDITURES & OTHER FINANCING USES	\$4,463,856.24				\$4,463,856.24

LEA : 103026852 North Allegheny SD

Printed 10/30/2025 12:55:34 PM

Fund	School	School Number	Local Personnel	Local Nonpersonnel	State Personnel	State Nonpersonnel	Federal Personnel	Federal Nonpersonnel	Total	Explanation
10										
	Bradford Woods El Sch	263	6,087,874.00	719,420.00	51,138.00	2,049.00	121,923.00	61,164.00	7,043,568.00	
	Carson MS	5108	13,569,247.00	1,534,961.00	46,278.00	3,737.00	48,450.00	106,765.00	15,309,438.00	
	Franklin El Sch	265	11,907,957.00	1,344,924.00	85,704.00	22,680.00	49,045.00	127,816.00	13,538,126.00	
	Hosack El Sch	6603	5,940,060.00	692,353.00	73,505.00	22,013.00	148,307.00	62,074.00	6,938,312.00	
	Ingomar El Sch	266	6,132,106.00	659,629.00	82,510.00	1,478.00	22,606.00	61,321.00	6,959,650.00	
	Ingomar MS	270	10,271,233.00	1,166,193.00	36,483.00	3,886.00	34,034.00	84,127.00	11,595,956.00	
	Marshall El Sch	7346	11,959,212.00	1,437,962.00	164,788.00	13,191.00	318,315.00	142,718.00	14,036,186.00	
	Marshall MS	7379	14,235,682.00	1,812,794.00	69,099.00	3,747.00	53,071.00	138,485.00	16,312,878.00	
	McKnight El Sch	268	13,282,146.00	1,631,694.00	153,530.00	3,258.00	202,497.00	161,100.00	15,434,225.00	
	North Allegheny HS	8305	46,588,035.00	6,666,068.00	31,519.00	30,887.00	289,899.00	441,172.00	54,047,580.00	
	Peebles El Sch	269	6,938,928.00	765,553.00	42,698.00	2,008.00	231,593.00	71,356.00	8,052,136.00	
Total			146,912,480.00	18,431,551.00	837,252.00	108,934.00	1,519,740.00	1,458,098.00	169,268,055.00	