

LEA Name : Governor Mifflin SD
Address : 10 South Waverly Street
Shillington , PA 19607

County : Berks
AUN Number : 114063003
LEA Type : SD

Annual Financial Report Accuracy Certification Statement

For Fiscal Year Ending

6/30/2025

Pennsylvania Department of Education

&

Office of Comptroller Operations

PDE-2056: Intermediate Unit

PDE-2057: School District, AVTS/CTC, Charter School,
and Special Program Jointure

CERTIFICATION: By signing this page I agree that the electronic data submitted is a complete and accurate statement of the financial operations and status of the local education agency for the fiscal year. It has been prepared in accordance with generally accepted accounting principles and established Commonwealth of PA reporting guidelines.



Chief School Administrator Signature

11/26/2025

Date



Board Secretary Signature

11/26/25

Date

Elaine Snyder

Contact Person

elaine.snyder@gmsd.org

Contact Person E-mail Address

(610)775-1461

Ext :7109

Contact Person Telephone Number

Contact Person Fax Number

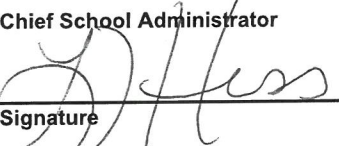
Audit Certification
Annual Financial Report:
For Fiscal Year Ending **6/30/2025**
(Pursuant to PA School Code Section 218(b))

LEA Name : Governor Mifflin SD
AUN Number : 114063003
County : Berks

Audit Certification Due: 12/31/2025

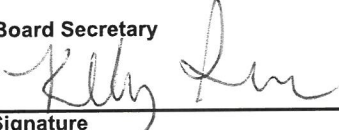
This certification is applicable to the Annual Financial Report data submitted through the Consolidated Financial Reporting System (CFRS).

CERTIFICATION: By signing this page I agree that the financial statements of the school have been properly audited as noted above pursuant to Article XXIV, and in the auditor's professional opinion, the Annual Financial Report (PDE-2057) submitted through CFRS is materially consistent with the audited financial statements.

Chief School Administrator


Signature

12/15/2025
Date

Board Secretary


Signature

12/15/25
Date

Elaine Snyder

Contact Person

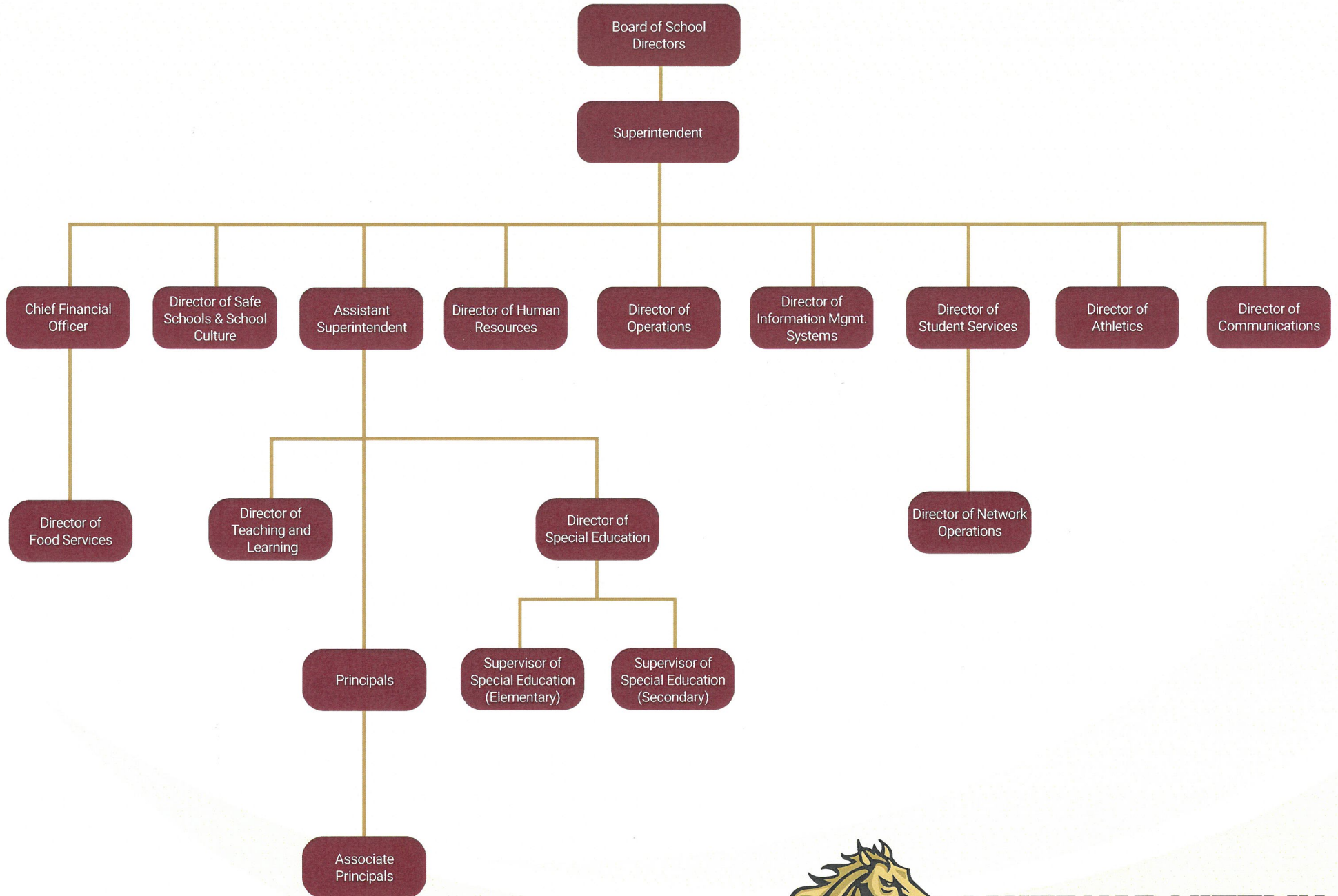
elaine.snyder@gmsd.org

Contact Person E-mail Address

(610)775-1461 Ext :7109

Contact Person Telephone Number

Contact Person Fax Number



**GOVERNOR MIFFLIN
SCHOOL DISTRICT**

ORGANIZATIONAL CHART

GOVERNOR MIFFLIN SCHOOL DISTRICT

SECTION: FINANCES

TITLE: GASB STATEMENT 34

ADOPTED: March 20, 2006

REVISED: June 16, 2025

Revision Effective Date: July 1, 2025

<p>Purpose SC 613</p> <p>Authority SC 218</p> <p>Delegation of Responsibility</p>	<p style="text-align: center;">622. GASB STATEMENT 34</p> <p>The Board recognizes the need to implement the required accounting and financial reporting standards stipulated by the Pennsylvania Department of Education.</p> <p>The primary objectives of implementing the GASB Statement 34 are to assure compliance with state requirements, and properly account for both the financial and economic resources of the District.</p> <p>Participation of the District in any such activity shall be in accordance with Board policy.</p> <p>The responsibility to coordinate the compilation and preparation of all information necessary to implement this policy is delegated to the Business Manager.</p> <p>The designated individual shall be responsible for implementing the necessary procedures to establish and maintain a fixed asset inventory, including depreciation schedules. Depreciation shall be computed on a straight-line basis over the useful lives of the assets, using an averaging convention. Normal maintenance and repairs shall be charged to expense as incurred; major renewals and betterments that materially extend the life or increase the value of the asset shall be capitalized. A schedule of accumulated depreciation shall be consistent from year to year. The basis for depreciation, including groups of assets and useful lives, shall be in writing and submitted for review to the Board.</p> <p>The Business Manager shall prepare the required Management Discussion and Analysis (MD&A). The MD&A shall be in the form required by GASB Statement 34 and shall be submitted to the Board for approval, prior to publication.</p> <p>Prior to submission of the MD&A for Board approval, the District's independent auditors shall review the MD&A, in accordance with SAS No. 52, "Required Supplementary Information".</p>
---	---

<u>Val Number</u>	<u>Description</u>	<u>Justification</u>
12195	<p>REG: Current Year AFR Beginning Fund Balance must equal Prior Year AFR Ending Fund Balance. Justifications to this error must fully explain the situation that prompted a fund balance restatement. "Auditor Adjustment" is not a sufficient justification.</p> <p>Total Govt Funds, Beg Bal: \$38,756,988.00 PY Ending Bal, Govt Funds: \$38,637,369.00</p>	<p>Beginning fund balance for Fund 10 was restated (increase of \$119,619) due to the implementation of GASB 101 (Compensated Absences). As this was considered a change in accounting principal, a restatement of the beginning balance was required.</p>
12196	<p>REG - Fund 10: Current Year AFR Beginning Fund Balance must equal Prior Year AFR Ending Fund Balance. Justifications to this error must fully explain the situation that prompted a fund balance restatement. "Auditor Adjustment" is not a sufficient justification.</p> <p>REG Fund 10, Beg Fund Bal: \$7,749,313.00 PY Ending Fund Balance: \$7,629,694.00</p>	<p>Beginning fund balance for Fund 10 was restated (increase of \$119,619) due to the implementation of GASB 101 (Compensated Absences). As this was considered a change in accounting principal, a restatement of the beginning balance was required.</p>
13020	<p>REG: Interfund Trans-Out must equal REG Interfund Trans-In plus REP Interfund Trans In minus REP Interfund Trans-Out. (REG 5200 = REG 9300 + REP 9300 - REP 5200) Reference amts do not include any incoming transfers of the Fid. Funds. Include Fid. Fund incoming transfer info in the justification. Correct or enter a justification.</p> <p>Transfers Out (REG 5200): \$6,063,304.00 (REG 9300) + (REP 9300) - (REP 5200) : \$6,130,796.00</p>	<p>Transfers out of Fund 81 (Special Ed Settlements) totaling \$67,492.</p>
30116	<p>Revenue Detail: A large amount has been reported as Earnings on Investments in Fund 32, account 6500, which should only include interest and/or dividend earnings. Correct or provide a brief explanation of the revenue reported.</p> <p>Revenue Detail 6500, Fund 32: \$642,184.54</p>	<p>Total amount recorded represents interest on deposit and investment balances. Stable balances and somewhat favorable interest rates allowed for these higher interest revenue.</p>
30521	<p>Revenue Detail: AFR amount must equal PDE FAI System amount.</p> <p>7350, AFR Rev Detail: \$173,932.00 7350, PDE FAI System: \$191,414.50</p>	<p>This grant is paid 50% up front and 50% at completion. During FY 24/25, we received \$191,414.50, but our expenditures only totaled \$173,932.00. The remaining \$17,482.50 received was recorded as unearned revenue in 24/25.</p>
42420	<p>Expenditure Detail: Total current year 2700-513 expenditure varies from prior year by 10%. Correct the data or enter a justification.</p> <p>2700-513, AFR Exp Detail: \$4,097,797.84 2700-513, PY AFR Amount: \$3,625,792.33</p>	<p>Four additional buses routes were added to alleviate over-crowding and timing issues. Two new vans were added for homeless, dual credit, and internship students. Needed additional out of district Special Education transportation.</p>

50380 CESE: The amount reported on Line 1 of the CESE exceeds the Governmental Fund special education expenditures in Function 1200. Please correct or provide a justification.

The CESE schedule is allocated based on direct Special Education expenditures plus an apportioned share of those expenditures that are not directly allocated to Special Education. This remains consistent with how data has historically been reported.

50450 SESS - 2350 Legal and Accounting Services: SESS Schedule amounts for Special Education vary from prior year by 40% or more. Correct the data or enter a justification.

There were 6 new Special Education settlement accounts totaling approximately \$150K opened during fiscal year 24/25

SESS Schedule 2350: \$229,910.50
Prior Year SESS Schedule 2350: \$150,905.83

50460 SESS - 2420 Medical Services: SESS Schedule amounts for Special Education vary from prior year by 40% or more. Correct the data or enter a justification.

Expenditures in fiscal year 24/25 included payments to a consultant for ACCESS billing coordination which was previously performed in-house by an existing staff member.

SESS Schedule 2420: \$2,039.54
Prior Year SESS Schedule 2420: \$455.81

Amounts Expressed in Whole Dollars	<u>General Fund</u> <u>(10)</u>	<u>Student Sponsored</u> <u>Activity Fund</u> <u>(21)</u>	<u>Public Purpose Trust</u> <u>(27)</u>	<u>Other Compt Approved</u> <u>(28)</u>	<u>Athletic / Activity</u> <u>(29)</u>
Assets And Deferred Outflows Of Resources					
Assets					
0100 Cash and Cash Equivalents	13,563,711				
0110 Investments					
0120 Taxes Receivable	2,152,527				
0130 Due From Other Funds	3,986				
0141 Due From Other Governments	454,870				
0142 State Revenue Receivable	3,216,944				
0143 Federal Revenue Receivable	309,096				
0145 Other Intergovernmental Revenue Receivable					
0146 Due from Primary Government					
0147 Due from Component Unit					
0150 Other Receivables	156,838				
0170 Inventories					
0180 Prepaid Expenses (Expenditures)	214,755				
0190 Other Current Assets					
Total Assets	\$20,072,727				
0910 Deferred Outflows of Resources					
Total Assets And Deferred Outflows Of Resources	\$20,072,727				

Amounts Expressed in Whole Dollars

<u>Capital Reserve (690.</u>	<u>Capital Reserve (1431)</u>	<u>Other Capital Projects</u>	<u>Debt Service</u>	<u>Permanent</u>
<u>1850)</u>	<u>(32)</u>	<u>Fund</u>	<u>(40)</u>	<u>(90)</u>
<u>(31)</u>		<u>(39)</u>		

Assets And Deferred Outflows Of Resources

Assets

0100 Cash and Cash Equivalents		13,060,841	17,606,782	
0110 Investments				
0120 Taxes Receivable				
0130 Due From Other Funds				
0141 Due From Other Governments				
0142 State Revenue Receivable				
0143 Federal Revenue Receivable				
0145 Other Intergovernmental Revenue Receivable				
0146 Due from Primary Government				
0147 Due from Component Unit				
0150 Other Receivables				
0170 Inventories				
0180 Prepaid Expenses (Expenditures)				
0190 Other Current Assets				
Total Assets		\$13,060,841	\$17,606,782	
0910 Deferred Outflows of Resources				
Total Assets And Deferred Outflows Of Resources		\$13,060,841	\$17,606,782	

Amounts Expressed in Whole Dollars

Total Governmental Funds

Assets And Deferred Outflows Of Resources

Assets	
0100 Cash and Cash Equivalents	44,231,334
0110 Investments	
0120 Taxes Receivable	2,152,527
0130 Due From Other Funds	3,986
0141 Due From Other Governments	454,870
0142 State Revenue Receivable	3,216,944
0143 Federal Revenue Receivable	309,096
0145 Other Intergovernmental Revenue Receivable	
0146 Due from Primary Government	
0147 Due from Component Unit	
0150 Other Receivables	156,838
0170 Inventories	
0180 Prepaid Expenses (Expenditures)	214,755
0190 Other Current Assets	
Total Assets	\$50,740,350
0910 Deferred Outflows of Resources	
Total Assets And Deferred Outflows Of Resources	\$50,740,350

Amounts Expressed in Whole Dollars	<u>General Fund</u> <u>(10)</u>	<u>Student Sponsored</u> <u>Activity Fund</u> <u>(21)</u>	<u>Public Purpose Trust</u> <u>(27)</u>	<u>Other Compt Approved</u> <u>(28)</u>	<u>Athletic / Activity</u> <u>(29)</u>
Liabilities And Deferred Inflows Of Resources And Fund Balances					
Liabilities					
0400 Due to Other Funds	99,317				
0411 Due to Other Governments	5,425				
0412 Due to Primary Government					
0413 Due to Component Unit					
0420 Accounts Payable	1,934,492				
0430 Contracts Payable					
0440 Current Portion of Long-Term Debt					
0450 Short-Term Payables					
0461 Accrued Salaries and Benefits	8,168,328				
0462 Payroll Deductions and Withholding					
0480 Unearned Revenues	65,088				
0490 Other Current Liabilities	4,781				
Total Liabilities	\$10,277,431				
0950 Deferred Inflows of Resources	1,254,317				
Fund Balances					
0810 Nonspendable Fund Balance	214,755				
0820 Restricted Fund Balance					
0830 Committed Fund Balance	1,250,000				
0840 Assigned Fund Balance	500,000				
0850 Unassigned Fund Balance	6,576,224				
Total Fund Balances	\$8,540,979				
Total Liabilities, Deferred Inflows Of Resources And Fund Balances	\$20,072,727				

Amounts Expressed in Whole Dollars	<u>Capital Reserve (690.</u> <u>1850)</u> <u>(31)</u>	<u>Capital Reserve (1431)</u> <u>(32)</u>	<u>Other Capital Projects</u> <u>Fund</u> <u>(39)</u>	<u>Debt Service</u> <u>(40)</u>	<u>Permanent</u> <u>(90)</u>
Liabilities And Deferred Inflows Of Resources And Fund Balances					
Liabilities					
0400 Due to Other Funds					
0411 Due to Other Governments					
0412 Due to Primary Government					
0413 Due to Component Unit					
0420 Accounts Payable		7,851	2,096,944		
0430 Contracts Payable					
0440 Current Portion of Long-Term Debt					
0450 Short-Term Payables					
0461 Accrued Salaries and Benefits					
0462 Payroll Deductions and Withholding					
0480 Unearned Revenues					
0490 Other Current Liabilities					
Total Liabilities		\$7,851	\$2,096,944		
0950 Deferred Inflows of Resources					
Fund Balances					
0810 Nonspendable Fund Balance					
0820 Restricted Fund Balance		13,052,990	15,509,838		
0830 Committed Fund Balance					
0840 Assigned Fund Balance					
0850 Unassigned Fund Balance					
Total Fund Balances		\$13,052,990	\$15,509,838		
Total Liabilities, Deferred Inflows Of Resources And Fund Balances		\$13,060,841	\$17,606,782		

Amounts Expressed in Whole Dollars

Total Governmental Funds

Liabilities And Deferred Inflows Of Resources And Fund Balances

Liabilities

0400 Due to Other Funds	99,317
0411 Due to Other Governments	5,425
0412 Due to Primary Government	
0413 Due to Component Unit	
0420 Accounts Payable	4,039,287
0430 Contracts Payable	
0440 Current Portion of Long-Term Debt	
0450 Short-Term Payables	
0461 Accrued Salaries and Benefits	8,168,328
0462 Payroll Deductions and Withholding	
0480 Unearned Revenues	65,088
0490 Other Current Liabilities	4,781

Total Liabilities **\$12,382,226**

0950 Deferred Inflows of Resources	1,254,317
------------------------------------	-----------

Fund Balances

0810 Nonspendable Fund Balance	214,755
0820 Restricted Fund Balance	28,562,828
0830 Committed Fund Balance	1,250,000
0840 Assigned Fund Balance	500,000
0850 Unassigned Fund Balance	6,576,224

Total Fund Balances **\$37,103,807**

Total Liabilities, Deferred Inflows Of Resources And Fund Balances **\$50,740,350**

Amounts Expressed in Whole Dollars	<u>General Fund</u> <u>(10)</u>	<u>Student Sponsored</u> <u>Activity Fund</u> <u>(21)</u>	<u>Public Purpose Trust</u> <u>(27)</u>	<u>Other Compt Approved</u> <u>(28)</u>	<u>Athletic / Activity</u> <u>(29)</u>
Revenues					
6000 Revenue from Local Sources	58,484,909				
7000 Revenue from State Sources	26,926,371				
8000 Revenue from Federal Sources	1,183,453				
Total Revenues	\$86,594,733				
Expenditures					
1000 Instruction	51,770,074				
2000 Support Services	25,832,536				
3000 Operation of Non-Instructional Services	2,086,250				
4000 Facilities Acquisition, Construction and Improvement Services	178,581				
5110 Debt Service	79,579				
5130 Refund of Prior Year Revenues / Receipts					
5140 Leases and Other Right-to-Use Arrangements	556,926				
Total Expenditures	\$80,503,946				
Excess (Deficiency) Of Revenues Over Expenditures	\$6,090,787				
Other Financing Sources (Uses)					
9110 Face Value of Bonds Issued					
9120 Proceeds from Refunding of Bonds					
9130 Bond Premiums					
9200 Proceeds from Extended Term Financing, Leases, and Other Right-to-Use Arrangements	662,202				
9300 Interfund Transfers - IN	101,981				
9400 Sale of or Compensation for Loss of Fixed Assets					
9710 Transfers from Component Units					
9720 Transfers from Primary Governments					
9910 Other Financing Sources Not Listed in the 9000 Series					
9990 Insurance Recoveries					
5120 Debt Service – Refunded Bonds					
5150 Bond Discounts					
5200 Interfund Transfers – Out	6,063,304				
5300 Transfers Out to Component Units/Primary Governments					
Total Other Financing Sources (Uses)	(\$5,299,121)				

Amounts Expressed in Whole Dollars	<u>Capital Reserve (690.1850)</u> <u>(31)</u>	<u>Capital Reserve (1431)</u> <u>(32)</u>	<u>Other Capital Projects</u> <u>Fund</u> <u>(39)</u>	<u>Debt Service</u> <u>(40)</u>	<u>Permanent</u> <u>(90)</u>
Revenues					
6000 Revenue from Local Sources		642,185	950,345		
7000 Revenue from State Sources					
8000 Revenue from Federal Sources					
Total Revenues		\$642,185	\$950,345		
Expenditures					
1000 Instruction					
2000 Support Services		1,014,536			
3000 Operation of Non-Instructional Services		14,000			
4000 Facilities Acquisition, Construction and Improvement Services		16,397	2,992,444		
5110 Debt Service				6,063,304	
5130 Refund of Prior Year Revenues / Receipts					
5140 Leases and Other Right-to-Use Arrangements					
Total Expenditures		\$1,044,933	\$2,992,444	\$6,063,304	
Excess (Deficiency) Of Revenues Over Expenditures		(\$402,748)	(\$2,042,099)	(\$6,063,304)	
Other Financing Sources (Uses)					
9110 Face Value of Bonds Issued					
9120 Proceeds from Refunding of Bonds					
9130 Bond Premiums					
9200 Proceeds from Extended Term Financing, Leases, and Other Right-to-Use Arrangements					
9300 Interfund Transfers - IN				6,063,304	
9400 Sale of or Compensation for Loss of Fixed Assets					
9710 Transfers from Component Units					
9720 Transfers from Primary Governments					
9910 Other Financing Sources Not Listed in the 9000 Series					
9990 Insurance Recoveries					
5120 Debt Service – Refunded Bonds					
5150 Bond Discounts					
5200 Interfund Transfers – Out					
5300 Transfers Out to Component Units/Primary Governments					
Total Other Financing Sources (Uses)				\$6,063,304	

Amounts Expressed in Whole Dollars	<u>Total Governmental Funds</u>
Revenues	
6000 Revenue from Local Sources	60,077,439
7000 Revenue from State Sources	26,926,371
8000 Revenue from Federal Sources	1,183,453
Total Revenues	\$88,187,263
Expenditures	
1000 Instruction	51,770,074
2000 Support Services	26,847,072
3000 Operation of Non-Instructional Services	2,100,250
4000 Facilities Acquisition, Construction and Improvement Services	3,187,422
5110 Debt Service	6,142,883
5130 Refund of Prior Year Revenues / Receipts	
5140 Leases and Other Right-to-Use Arrangements	556,926
Total Expenditures	\$90,604,627
Excess (Deficiency) Of Revenues Over Expenditures	(\$2,417,364)
Other Financing Sources (Uses)	
9110 Face Value of Bonds Issued	
9120 Proceeds from Refunding of Bonds	
9130 Bond Premiums	
9200 Proceeds from Extended Term Financing, Leases, and Other Right-to-Use Arrangements	662,202
9300 Interfund Transfers - IN	6,165,285
9400 Sale of or Compensation for Loss of Fixed Assets	
9710 Transfers from Component Units	
9720 Transfers from Primary Governments	
9910 Other Financing Sources Not Listed in the 9000 Series	
9990 Insurance Recoveries	
5120 Debt Service – Refunded Bonds	
5150 Bond Discounts	
5200 Interfund Transfers – Out	6,063,304
5300 Transfers Out to Component Units/Primary Governments	
Total Other Financing Sources (Uses)	\$764,183

Amounts Expressed in Whole Dollars	<u>General Fund</u> <u>(10)</u>	<u>Student Sponsored</u> <u>Activity Fund</u> <u>(21)</u>	<u>Public Purpose Trust</u> <u>(27)</u>	<u>Other Compt Approved</u> <u>(28)</u>	<u>Athletic / Activity</u> <u>(29)</u>
Special And Extraordinary Items					
9920 Special Items – Gains					
9930 Extraordinary Items – Gains					
5520 Special Items – Losses					
5530 Extraordinary Items – Losses					
Net Change In Fund Balances	\$791,666				
Fund Balance					
0001 Fund Balance - Beginning of Fiscal Year	7,749,313				
Fund Balance - End Of Year	\$8,540,979				

Amounts Expressed in Whole Dollars	<u>Capital Reserve (690.</u> <u>1850</u> <u>(31)</u>	<u>Capital Reserve (1431)</u> <u>(32)</u>	<u>Other Capital Projects</u> <u>Fund</u> <u>(39)</u>	<u>Debt Service</u> <u>(40)</u>	<u>Permanent</u> <u>(90)</u>
Special And Extraordinary Items					
9920 Special Items – Gains					
9930 Extraordinary Items – Gains					
5520 Special Items – Losses					
5530 Extraordinary Items – Losses					
Net Change In Fund Balances		(\$402,748)	(\$2,042,099)		
Fund Balance					
0001 Fund Balance - Beginning of Fiscal Year		13,455,738	17,551,937		
Fund Balance - End Of Year		\$13,052,990	\$15,509,838		

Amounts Expressed in Whole Dollars	<u>Total Governmental Funds</u>
Special And Extraordinary Items	
9920 Special Items – Gains	
9930 Extraordinary Items – Gains	
5520 Special Items – Losses	
5530 Extraordinary Items – Losses	
Net Change In Fund Balances	(\$1,653,181)
Fund Balance	
0001 Fund Balance - Beginning of Fiscal Year	38,756,988
Fund Balance - End Of Year	\$37,103,807

Amounts Expressed in Whole Dollars	<u>Food Service</u> <u>(51)</u>	<u>Child Care</u> <u>Operations</u> <u>(52)</u>	<u>Other Enterprise</u> <u>(58)</u>	<u>TOTAL</u>	<u>Internal Service</u> <u>(60)</u>
Assets And Deferred Outflows Of Resources					
Current Assets					
0100 Cash and Cash Equivalents	2,842,715			2,842,715	
0110 Investments					
0130 Due From Other Funds	18,952			18,952	
0141 Due From Other Governments					
0142 State Revenue Receivable					
0143 Federal Revenue Receivable	20,113			20,113	
0146 Due from Primary Government					
0147 Due from Component Unit					
0150 Other Receivables	546			546	
0170 Inventories	45,361			45,361	
0180 Prepaid Expenses (Expenditures)					
0190 Other Current Assets					
Total Current Assets	\$2,927,687			\$2,927,687	
Noncurrent Assets					
0211 Land					
0212 Site Improvements (Net)					
0220 Buildings and Building Improvements (Net)					
0230 Tangible Property and Intangible Right-To-Use Assets (Net)	177,624			177,624	
0250 Construction in Progress	27,000			27,000	
0260 Long Term Prepayments					
0290 Other Noncurrent Assets					
Total Noncurrent Assets	\$204,624			\$204,624	
0910 Deferred Outflows of Resources	351,708			351,708	
Total Assets And Deferred Outflows Of Resources	\$3,484,019			\$3,484,019	

Amounts Expressed in Whole Dollars	<u>Food Service</u> <u>(51)</u>	<u>Child Care</u> <u>Operations</u> <u>(52)</u>	<u>Other Enterprise</u> <u>(58)</u>	<u>TOTAL</u>	<u>Internal Service</u> <u>(60)</u>
Liabilities And Deferred Inflows Of Resources And Net Position					
Current Liabilities					
0400 Due to Other Funds					
0411 Due to Other Governments					
0413 Due to Component Unit					
0420 Accounts Payable	41,330			41,330	
0430 Contracts Payable					
0440 Current Portion of Long-Term Debt					
0450 Short-Term Payables					
0461 Accrued Salaries and Benefits	1,523			1,523	
0462 Payroll Deductions and Withholding	641			641	
0480 Unearned Revenues	1,094			1,094	
0490 Other Current Liabilities	12,897			12,897	
Total Current Liabilities	\$57,485			\$57,485	
Noncurrent Liabilities					
0510 Bonds Payable					
0520 Extended-Term Financing Agreements Payable					
0530 Lease and Other Right-To-Use Obligations					
0540 Accumulated Compensated Absences	3,496			3,496	
0550 Authority Lease Obligations					
0560 Other Post-Employment Benefits (OPEB)	200,961			200,961	
0570 Net Pension Liability	1,703,498			1,703,498	
0599 Other Noncurrent Liabilities					
Total Noncurrent Liabilities	\$1,907,955			\$1,907,955	
Total Liabilities	\$1,965,440			\$1,965,440	
0950 Deferred Inflows of Resources	204,210			204,210	
Net Position					
0791 Net Investment in Capital Assets	204,624			204,624	
0008 Restricted Net Position (0792 – 0798)					
0799 Unrestricted Net Position	1,109,745			1,109,745	
Total Net Position	\$1,314,369			\$1,314,369	
Total Liabilities And Deferred Inflows Of Resources And Net Position	\$3,484,019			\$3,484,019	

Amounts Expressed in Whole Dollars	<u>Food Service</u> <u>(51)</u>	<u>Child Care Operations</u> <u>(52)</u>	<u>Other Enterprise</u> <u>(58)</u>	<u>TOTAL</u>	<u>Internal Service</u> <u>(60)</u>
Operating Revenues					
6600 Food Service Revenue	270,220			270,220	
0071 Charges for Services					
0072 Other Operating Revenue					
Total Operating Revenues	\$270,220			\$270,220	
Operating Expenses					
100 Personnel Services – Salaries	775,345			775,345	
200 Personnel Services – Employee Benefits	213,750			213,750	
300 Purchased Professional and Technical Services	3,727			3,727	
400 Purchased Property Services	17,960			17,960	
500 Other Purchased Services	2,652			2,652	
600 Supplies	1,491,684			1,491,684	
740 Depreciation	23,182			23,182	
770 Amortization Expense					
810 Dues and Fees	855			855	
880 Refunds of Prior Years' Receipts					
890 Miscellaneous Expenditures					
Total Operating Expenses	\$2,529,155			\$2,529,155	
Operating Income (Loss)	(\$2,258,935)			(\$2,258,935)	
Non Operating Revenues (Expenses)					
6500 Earnings on Investments	93,428			93,428	
6830 Federal Revenue from Intermediary Sources					
6920 Contributions and Donations from Private Sources					
6930 Gains or Losses on Sale of Fixed Assets					
6991 Refunds of a Prior Year Expenditure					
7000 Revenue from State Sources	360,634			360,634	
8000 Revenue from Federal Sources	2,387,119			2,387,119	
9990 Insurance Recoveries					
820 Claims and Judgments Against the LEA					
830 Interest					
TOTAL Non Operating Revenues (Expenses)	\$2,841,181			\$2,841,181	
Income (Loss) Before Contributions And Transfers	\$582,246			\$582,246	

Amounts Expressed in Whole Dollars	<u>Food Service</u> <u>(51)</u>	<u>Child Care Operations</u> <u>(52)</u>	<u>Other Enterprise</u> <u>(58)</u>	<u>TOTAL</u>	<u>Internal Service</u> <u>(60)</u>
Contributions, Transfers, and Special and Extraordinary Items					
5200 Interfund Transfers – Out	34,489			34,489	
5300 Transfers Out to Component Units/Primary Governments					
5520 Special Items – Losses					
5530 Extraordinary Items – Losses					
9300 Interfund Transfers - IN					
9500 Capital Contributions					
9700 Transfers IN From Component Units/Primary Governments					
9920 Special Items – Gains					
9930 Extraordinary Items – Gains					
Change In Net Position	\$547,757			\$547,757	
0002 Net Position - Beginning of Fiscal Year	770,006			770,006	
0003 Accounting Changes / Residual Equity Transfers	(3,394)			(3,394)	
Net Position - End Of Year	\$1,314,369			\$1,314,369	

Amounts Expressed in Whole Dollars	<u>Food Service</u> <u>(51)</u>	<u>Child Care Operations</u> <u>(52)</u>	<u>Other Enterprise</u> <u>(58)</u>	<u>TOTAL</u>	<u>Internal Service(60)</u>
Cash Flows From Operating Activities					
0011 Cash Receipts From Users	262,604			262,604	
0012 Cash Receipts From Assessments Made to Other Funds					
0013 Cash Receipts From Earnings on Investments					
0014 Cash Receipts From Other Operating Revenue					
0015 Cash Payments To Employees For Services	1,157,068			1,157,068	
0016 Cash Payments For Insurance Claims					
0017 Cash Payments To Suppliers For Goods and Services	1,285,069			1,285,069	
0018 Cash Payments For Other Operating Expenses					
Net Cash Provided By (Used For) Operating Activities	(\$2,179,533)			(\$2,179,533)	
Cash Flows From Non-Capital Financing Activities					
0021 Receipts From Local Sources - 6000					
0022 Receipts From State Sources - 7000	360,634			360,634	
0023 Receipts From Federal Sources -8000	2,190,016			2,190,016	
0024 Notes and Loans Received (Repaid)					
0025 Interest Paid on Notes/Loans - 5100-830					
0026 Operating Transfers In (Out)/Residual Equity Trans	(34,489)			(34,489)	
0027 Operating Transfers In (Out) Primary Government / Comp Unit					
0028 Receipts From Refund of Prior Year Expenditures - 6991					
0029 Special and Extraordinary Gains (losses)					
0030 Receipts from Insurance Recoveries -9990					
Net Cash Prov By (Used for) Non-Capital Financing Activities	\$2,516,161			\$2,516,161	
Cash Flows From Capital and Related Financing Activities					
0031 Payments For Fac Acq, Const, and Imp - 4000	(33,966)			(33,966)	
0032 Proceeds from Disposal of Capital Assets					
0033 Proceeds From Extended Term Financing - 9200					
0034 Principal Paid on Financing Agreements					
0035 Interest Paid on Financing Agreements - 5100-830					
0036 (Inc) Dec in Contributed Capital					
Net Cash Prov By (Used for) Capital and Related Financing Activities	(\$33,966)			(\$33,966)	
Cash Flows From Investing Activities					
0041 Earnings on Investments - 6500	93,428			93,428	
0042 Purchase of Inv Securities / Deposits to Inv Pools					
0043 Receipts From Investment Pool Withdrawals					
0044 Proceeds from Sale and Maturity of Inv Securities					

LEA : 114063003 Governor Mifflin SD

Printed 12/17/2025 8:48:59 AM

0045 Loans Received (Paid)

Net Cash Prov By (Used for) Investing Activities	\$93,428	\$93,428
---	-----------------	-----------------

	<u>Food Service</u> <u>(51)</u>	<u>Child Care Operations</u> <u>(52)</u>	<u>Other Enterprise</u> <u>(58)</u>	<u>TOTAL</u>	<u>Internal Service</u> <u>(60)</u>
Net Increase (Decrease) in Cash Flows	396,090			396,090	
0004 Cash and Cash Equivalents Beginning of Year	2,446,625			2,446,625	
Cash and Cash Equivalents at Year End	\$2,842,715			\$2,842,715	
<hr/>					
Reconciliation of Operating Income (Loss) To Net Cash Provided by (Used For) Operating Activities					
0005 Operating Income (Loss) per REP	(2,258,935)			(2,258,935)	
Adjustments					
0051 Depreciation and Net Amortization	23,182			23,182	
0052 Provision for Uncollectible Accounts					
0053 Other Adjustments	199,560			199,560	
Effect of Changes in Assets, Liabilities, Deferred Outflows and Deferred Inflows					
0054 (Inc) Dec In Accounts Receivable (0120-0150)	(39)			(39)	
0055 Advances to Other Funds	(2,492)			(2,492)	
0056 (Inc) Dec in Inventories (0170)	(5,790)			(5,790)	
0057 (Inc) Dec in Prepaid Expenses (0180)					
0058 (Inc) Dec in Other Current or Noncurrent Assets					
0064 Deferred Outflows (0910)	77,452			77,452	
0059 Inc (Dec) in Accounts Payable (0400-0450)	40,532			40,532	
0060 Inc (Dec) in Accrued Salaries/Benefits (0461)	193			193	
0065 Inc (Dec) in Net Pension Liabilities (0570)	(319,470)			(319,470)	
0066 Inc (Dec) in Other Postemp Benefit Oblig (0560)	3,349			3,349	
0061 Inc (Dec) in Payroll Deductions/Withholding (0462)					
0062 Inc (Dec) in Unearned Revenue (0480)	(7,577)			(7,577)	
0063 Inc (Dec) in Other Current or Noncurrent Liabilities					
0067 Deferred Inflows (0950)	70,502			70,502	
Total Adjustments	\$79,402			\$79,402	
Cash Provided By (Used for) Total	(\$2,179,533)			(\$2,179,533)	

COMBINED STATEMENT OF CASH FLOWS
SCHEDULE OF NONCASH INVESTING, CAPITAL, AND FINANCING ACTIVITIES

Explanation of Transaction and Balance Sheet Effect	Amount
USDA Commodities	199,560
Total	\$199,560

LEA : 114063003 Governor Mifflin SD

Printed 12/17/2025 8:49:01 AM

Amounts Expressed in Whole Dollars

	<u>Private Purpose Trust</u> (71)	<u>Investment Trust</u> (72)	<u>Pension Trust</u> (73)	<u>Student Activity Custodial</u> (81)
Assets And Deferred Outflows Of Resources				
Assets				
0100 Cash and Cash Equivalents	37,504			386,091
0110 Investments				
0130 Due From Other Funds				76,920
0140 Due from Other Governments, Primary Government and Component Units				
0150 Other Receivables				
0170 Inventories				
0180 Prepaid Expenses (Expenditures)				
0190 Other Current Assets				
0220 Buildings and Building Improvements (Net)				
0230 Tangible Property and Intangible Right-To-Use Assets (Net)				
Total Assets	\$37,504			\$463,011
0910 Deferred Outflows of Resources				
Total Assets And Deferred Outflows Of Resources	\$37,504			\$463,011

LEA : 114063003 Governor Mifflin SD

Printed 12/17/2025 8:49:01 AM

Amounts Expressed in Whole Dollars	<u>Other Custodial</u> <u>(89)</u>	<u>Fiduciary Component Units</u> <u>(98)</u>	<u>Total Fiduciary Funds</u>
Assets And Deferred Outflows Of Resources			
Assets			
0100 Cash and Cash Equivalents			423,595
0110 Investments			
0130 Due From Other Funds			76,920
0140 Due from Other Governments, Primary Government and Component Units			
0150 Other Receivables			
0170 Inventories			
0180 Prepaid Expenses (Expenditures)			
0190 Other Current Assets			
0220 Buildings and Building Improvements (Net)			
0230 Tangible Property and Intangible Right-To-Use Assets (Net)			
Total Assets			\$500,515
0910 Deferred Outflows of Resources			
Total Assets And Deferred Outflows Of Resources			\$500,515

LEA : 114063003 Governor Mifflin SD

Printed 12/17/2025 8:49:01 AM

Amounts Expressed in Whole Dollars	<u>Private Purpose Trust</u> (71)	<u>Investment Trust</u> (72)	<u>Pension Trust</u> (73)	<u>Student Activity Custodial</u> (81)
Liabilities, Deferred Inflows Of Resources And Net Position				
Liabilities				
0400 Due to Other Funds				541
0410 Due to Other Governments, Primary Government and Component Units				
0420 Accounts Payable				15,191
0430 Contracts Payable				
0450 Short-Term Payables				
0460 Payroll Accruals and Withholdings				
0480 Unearned Revenues				
0490 Other Current Liabilities				
Total Liabilities				\$15,732
0950 Deferred Inflows of Resources				
Net Position				
0791 Net Investment in Capital Assets				
0009 Restricted Net Position (0792 – 0798)				
0799 Unrestricted Net Position	37,504			447,279
Total Net Position	\$37,504			\$447,279
Total Liabilities, Deferred Inflows Of Resources And Net Position	\$37,504			\$463,011

LEA : 114063003 Governor Mifflin SD

Printed 12/17/2025 8:49:01 AM

Amounts Expressed in Whole Dollars	<u>Other Custodial</u> <u>(89)</u>	<u>Fiduciary Component Units</u> <u>(98)</u>	<u>Total Fiduciary Funds</u>
Liabilities, Deferred Inflows Of Resources And Net Position			
Liabilities			
0400 Due to Other Funds			541
0410 Due to Other Governments, Primary Government and Component Units			
0420 Accounts Payable			15,191
0430 Contracts Payable			
0450 Short-Term Payables			
0460 Payroll Accruals and Withholdings			
0480 Unearned Revenues			
0490 Other Current Liabilities			
Total Liabilities			\$15,732
0950 Deferred Inflows of Resources			
Net Position			
0791 Net Investment in Capital Assets			
0009 Restricted Net Position (0792 – 0798)			
0799 Unrestricted Net Position			484,783
Total Net Position			\$484,783
Total Liabilities, Deferred Inflows Of Resources And Net Position			\$500,515

Amounts Expressed in Whole Dollars	<u>Private Purpose Trust</u> <u>(71)</u>	<u>Investment Trust</u> <u>(72)</u>	<u>Pension Trust</u> <u>(73)</u>	<u>Student Activity</u> <u>Custodial</u> <u>(81)</u>	<u>Other Custodial</u> <u>(89)</u>	<u>Fiduciary Component</u> <u>Units</u> <u>(98)</u>
Additions						
0091 Gifts and Contributions	300			477,276		
0095 Net Investment Earnings	1,679			11,861		
0092 Other Additions						
Deductions						
0093 Scholarships Awarded	3,750					
0094 Other Deductions				455,945		
Change In Net Position	(\$1,771)			\$33,192		
0006 Net Position – Beginning of Fiscal Year	39,275			414,087		
0007 Net Position Held in Trust for Pension Benefits						
Net Position - End of Fiscal Year	\$37,504			\$447,279		

Amounts Expressed in Whole Dollars	<u>Total Fiduciary Funds</u>
Additions	
0091 Gifts and Contributions	477,576
0095 Net Investment Earnings	13,540
0092 Other Additions	
Deductions	
0093 Scholarships Awarded	3,750
0094 Other Deductions	455,945
Change in Net Position	\$31,421
0006 Net Position – Beginning of Fiscal Year	453,362
0007 Net Position Held in Trust for Pension Benefits	
Net Position - End of Fiscal Year	\$484,783

	<u>Revenue Reported In Current Year</u>	<u>Current Year Tax Accrual</u>	<u>Prior Year Tax Accrual</u>	<u>Taxes Collected In Current Year</u>
<u>Revenue from Local Sources</u>				
6111 Current Real Estate Taxes	47,532,121.07			47,532,121.07
6112 Interim Real Estate Taxes	128,559.68	68,259.63	373.16	60,673.21
6113 Public Utility Realty Taxes	50,110.93			50,110.93
6114 Payments in Lieu of Current Taxes - State / Local	16,311.94		11,132.76	27,444.70
6120 Current Per Capita Taxes, Section 679	87,431.84			87,431.84
6141 Current Act 511 Per Capita Taxes	87,319.95			87,319.95
6142 Current Act 511 Occupation Taxes - Flat Rate	63,432.43			63,432.43
6143 Current Act 511 Local Services Taxes	56,580.12	256.12	430.73	56,754.73
6151 Current Act 511 Earned Income Taxes	5,925,186.69	415,869.88	434,220.50	5,943,537.31
6153 Current Act 511 Real Estate Transfer Taxes	856,473.07	79,771.82	105,862.72	882,563.97
6411 Delinquent Real Estate Taxes	1,030,919.81	334,052.58	169,425.19	866,292.42
6420 Delinquent Per Capita Taxes, Section 679	34,892.00			34,892.00
6500 Earnings on Investments	1,242,458.63			
6700 Revenues from LEA Activities	139,964.35			
6832 Federal IDEA Revenue Received as Pass Through	824,475.24			
6910 Rentals	101,819.01			
6920 Contributions and Donations from Private Sources	68,200.25			
6942 Summer School Tuition	10,700.00			
6944 Receipts from Other LEAs in Pennsylvania - Education	155,844.66			
6991 Refunds of a Prior Year Expenditure	50,302.11			
6999 Other Revenues Not Specified Above	21,805.05			
TOTAL Revenue from Local Sources	\$58,484,908.83	\$898,210.03	\$721,445.06	\$55,692,574.56

	Revenue Reported In Current Year			
Revenue from State Sources				
7111 Basic Education Funding-Formula	9,347,891.99			
7140 Charter Schools	112,780.69			
7160 Tuition for Orphans Subsidy	90,227.02			
7250 Migratory Children	40.00			
7271 Special Education funds for School-Aged Pupils	3,252,285.62			
7292 Pre-K Counts	630,000.00			
7299 Program Revenues Not Listed Previously in the 7200 Series	3,679.18			
7311 Pupil Transportation Subsidy	1,025,336.73			
7312 Nonpublic and Charter School Pupil Transportation Subsidy	62,755.00			
7320 Rental and Sinking Fund Payments / Building Reimbursement Subsidy	532,476.51			
7331 State Reimbursement for Health Services	65,352.95			
7332 Feminine Hygiene Product Funding	7,148.75			
7340 State Property Tax Reduction Allocation	1,309,238.70			
7350 School Facility Improvements / Environmental Subsidies	173,932.00			
7361 School Safety and Security Grants	266,176.00			
7362 School Mental Health & Safety and Security Grants	80,352.18			
7369 Other Safe School Grants	45,000.00			
7531 Ready to Learn-Foundation	686,905.00			
7532 Ready to Learn-Adequacy Supplement	1,590,435.96			
7599 Other State Revenue Not Listed Elsewhere in the 7000 Series	10,000.00			
7810 State Share of Social Security and Medicare Taxes	1,333,548.13			
7820 State Share of Retirement Contributions	6,300,808.09			
TOTAL Revenue from State Sources	\$26,926,370.50			

	Revenue Reported In Current Year			
Revenue from Federal Sources				
8514 Title I - Improving the Academic Achievement of the Disadvantaged	679,300.00			
8515 Title II - Preparing, Training, and Recruiting High Quality Teachers and Principals	102,590.82			
8516 Title III - Language Instruction for English Learners and Immigrant Students	29,594.00			
8517 Title IV - 21st Century Schools	51,060.76			
8749 Other CARES Act Funding	151,830.00			
8810 School-Based Access Medicaid Reimbursement Program (SBAP) Reimbursements (Access)	150,000.00			
8820 Medical Assistance Reimbursement for Administrative Claiming (Quarterly) Program	19,077.33			
TOTAL Revenue from Federal Sources	\$1,183,452.91			

	Revenue Reported In Current Year			
<u>Other Financing Sources</u>				
9220 Leases and Other Right-to-Use Arrangements	363,863.00			
9290 Other Extended-Term Financing Proceeds	298,339.30			
9350 Enterprise Fund Transfers	34,489.27			
9380 Student Activity Custodial Fund Transfers	67,491.90			
TOTAL Other Financing Sources	\$764,183.47			
TOTAL FROM ALL SOURCES	\$87,358,915.71	\$898,210.03	\$721,445.06	\$55,692,574.56

LEA : 114063003 Governor Mifflin SD

Printed 12/17/2025 8:49:06 AM

	<u>General Fund (10)</u>	<u>Student Sponsored Activity Fund (21)</u>	<u>Public Purpose Trust (27)</u>	<u>Other Compt Approved (28)</u>	<u>Athletic / Activity (29)</u>	<u>Capital Reserve (690, 1850) (31)</u>
6000 Revenue from Local Sources						
6111 Current Real Estate Taxes	47,532,121.07					
6112 Interim Real Estate Taxes	128,559.68					
6113 Public Utility Realty Taxes	50,110.93					
6114 Payments in Lieu of Current Taxes - State / Local	16,311.94					
6120 Current Per Capita Taxes, Section 679	87,431.84					
6141 Current Act 511 Per Capita Taxes	87,319.95					
6142 Current Act 511 Occupation Taxes - Flat Rate	63,432.43					
6143 Current Act 511 Local Services Taxes	56,580.12					
6151 Current Act 511 Earned Income Taxes	5,925,186.69					
6153 Current Act 511 Real Estate Transfer Taxes	856,473.07					
6411 Delinquent Real Estate Taxes	1,030,919.81					
6420 Delinquent Per Capita Taxes, Section 679	34,892.00					
6500 Earnings on Investments	1,242,458.63					
6700 Revenues from LEA Activities	139,964.35					
6832 Federal IDEA Revenue Received as Pass Through	824,475.24					
6910 Rentals	101,819.01					
6920 Contributions and Donations from Private Sources	68,200.25					
6942 Summer School Tuition	10,700.00					
6944 Receipts from Other LEAs in Pennsylvania - Education	155,844.66					
6991 Refunds of a Prior Year Expenditure	50,302.11					
6999 Other Revenues Not Specified Above	21,805.05					
6000 Total Revenue from Local Sources	\$58,484,908.83					
7000 Revenue from State Sources						
7111 Basic Education Funding-Formula	9,347,891.99					
7140 Charter Schools	112,780.69					
7160 Tuition for Orphans Subsidy	90,227.02					
7250 Migratory Children	40.00					
7271 Special Education funds for School-Aged Pupils	3,252,285.62					
7292 Pre-K Counts	630,000.00					
7299 Program Revenues Not Listed Previously in the 7200 Series	3,679.18					
7311 Pupil Transportation Subsidy	1,025,336.73					
7312 Nonpublic and Charter School Pupil Transportation Subsidy	62,755.00					
7320 Rental and Sinking Fund Payments / Building Reimbursement Subsidy	532,476.51					
7331 State Reimbursement for Health Services	65,352.95					
7332 Feminine Hygiene Product Funding	7,148.75					

LEA : 114063003 Governor Mifflin SD

Printed 12/17/2025 8:49:06 AM

	<u>Capital Reserve</u> <u>(1431) (32)</u>	<u>Other Capital</u> <u>Projects Fund (39)</u>	<u>Debt Service (40)</u>	<u>Permanent (90)</u>	<u>Total</u>
6000 Revenue from Local Sources					
6111 Current Real Estate Taxes					47,532,121.07
6112 Interim Real Estate Taxes					128,559.68
6113 Public Utility Realty Taxes					50,110.93
6114 Payments in Lieu of Current Taxes - State / Local					16,311.94
6120 Current Per Capita Taxes, Section 679					87,431.84
6141 Current Act 511 Per Capita Taxes					87,319.95
6142 Current Act 511 Occupation Taxes - Flat Rate					63,432.43
6143 Current Act 511 Local Services Taxes					56,580.12
6151 Current Act 511 Earned Income Taxes					5,925,186.69
6153 Current Act 511 Real Estate Transfer Taxes					856,473.07
6411 Delinquent Real Estate Taxes					1,030,919.81
6420 Delinquent Per Capita Taxes, Section 679					34,892.00
6500 Earnings on Investments	642,184.54	950,344.93			2,834,988.10
6700 Revenues from LEA Activities					139,964.35
6832 Federal IDEA Revenue Received as Pass Through					824,475.24
6910 Rentals					101,819.01
6920 Contributions and Donations from Private Sources					68,200.25
6942 Summer School Tuition					10,700.00
6944 Receipts from Other LEAs in Pennsylvania - Education					155,844.66
6991 Refunds of a Prior Year Expenditure					50,302.11
6999 Other Revenues Not Specified Above					21,805.05
6000 Total Revenue from Local Sources	\$642,184.54	\$950,344.93			\$60,077,438.30
7000 Revenue from State Sources					
7111 Basic Education Funding-Formula					9,347,891.99
7140 Charter Schools					112,780.69
7160 Tuition for Orphans Subsidy					90,227.02
7250 Migratory Children					40.00
7271 Special Education funds for School-Aged Pupils					3,252,285.62
7292 Pre-K Counts					630,000.00
7299 Program Revenues Not Listed Previously in the 7200 Series					3,679.18
7311 Pupil Transportation Subsidy					1,025,336.73
7312 Nonpublic and Charter School Pupil Transportation Subsidy					62,755.00
7320 Rental and Sinking Fund Payments / Building Reimbursement Subsidy					532,476.51
7331 State Reimbursement for Health Services					65,352.95
7332 Feminine Hygiene Product Funding					7,148.75

	<u>General Fund (10)</u>	<u>Student Sponsored Activity Fund (21)</u>	<u>Public Purpose Trust (27)</u>	<u>Other Compt Approved (28)</u>	<u>Athletic / Activity (29)</u>	<u>Capital Reserve (690.1850) (31)</u>
7000 Revenue from State Sources						
7340 State Property Tax Reduction Allocation	1,309,238.70					
7350 School Facility Improvements / Environmental Subsidies	173,932.00					
7361 School Safety and Security Grants	266,176.00					
7362 School Mental Health & Safety and Security Grants	80,352.18					
7369 Other Safe School Grants	45,000.00					
7531 Ready to Learn-Foundation	686,905.00					
7532 Ready to Learn-Adequacy Supplement	1,590,435.96					
7599 Other State Revenue Not Listed Elsewhere in the 7000 Series	10,000.00					
7810 State Share of Social Security and Medicare Taxes	1,333,548.13					
7820 State Share of Retirement Contributions	6,300,808.09					
7000 Total Revenue from State Sources	\$26,926,370.50					
8000 Revenue from Federal Sources						
8514 Title I - Improving the Academic Achievement of the Disadvantaged	679,300.00					
8515 Title II - Preparing, Training, and Recruiting High Quality Teachers and Principals	102,590.82					
8516 Title III - Language Instruction for English Learners and Immigrant Students	29,594.00					
8517 Title IV - 21st Century Schools	51,060.76					
8749 Other CARES Act Funding	151,830.00					
8810 School-Based Access Medicaid Reimbursement Program (SBAP) Reimbursements (Access)	150,000.00					
8820 Medical Assistance Reimbursement for Administrative Claiming (Quarterly) Program	19,077.33					
8000 Total Revenue from Federal Sources	\$1,183,452.91					
9000 Other Financing Sources						
9220 Leases and Other Right-to-Use Arrangements	363,863.00					
9290 Other Extended-Term Financing Proceeds	298,339.30					
9310 General Fund Transfers						
9350 Enterprise Fund Transfers	34,489.27					
9380 Student Activity Custodial Fund Transfers	67,491.90					
9000 Total Other Financing Sources	\$764,183.47					
Total From All Sources	\$87,358,915.71					

	<u>Capital Reserve</u> <u>(1431) (32)</u>	<u>Other Capital</u> <u>Projects Fund (39)</u>	<u>Debt Service (40)</u>	<u>Permanent (90)</u>	<u>Total</u>
7000 Revenue from State Sources					
7340 State Property Tax Reduction Allocation					1,309,238.70
7350 School Facility Improvements / Environmental Subsidies					173,932.00
7361 School Safety and Security Grants					266,176.00
7362 School Mental Health & Safety and Security Grants					80,352.18
7369 Other Safe School Grants					45,000.00
7531 Ready to Learn-Foundation					686,905.00
7532 Ready to Learn-Adequacy Supplement					1,590,435.96
7599 Other State Revenue Not Listed Elsewhere in the 7000 Series					10,000.00
7810 State Share of Social Security and Medicare Taxes					1,333,548.13
7820 State Share of Retirement Contributions					6,300,808.09
7000 Total Revenue from State Sources					\$26,926,370.50
8000 Revenue from Federal Sources					
8514 Title I - Improving the Academic Achievement of the Disadvantaged					679,300.00
8515 Title II - Preparing, Training, and Recruiting High Quality Teachers and Principals					102,590.82
8516 Title III - Language Instruction for English Learners and Immigrant Students					29,594.00
8517 Title IV - 21st Century Schools					51,060.76
8749 Other CARES Act Funding					151,830.00
8810 School-Based Access Medicaid Reimbursement Program (SBAP) Reimbursements (Access)					150,000.00
8820 Medical Assistance Reimbursement for Administrative Claiming (Quarterly) Program					19,077.33
8000 Total Revenue from Federal Sources					\$1,183,452.91
9000 Other Financing Sources					
9220 Leases and Other Right-to-Use Arrangements					363,863.00
9290 Other Extended-Term Financing Proceeds					298,339.30
9310 General Fund Transfers			6,063,304.01		6,063,304.01
9350 Enterprise Fund Transfers					34,489.27
9380 Student Activity Custodial Fund Transfers					67,491.90
9000 Total Other Financing Sources			\$6,063,304.01		\$6,827,487.48
Total From All Sources	\$642,184.54	\$950,344.93	\$6,063,304.01		\$95,014,749.19

	<u>General Fund (10)</u>	<u>Student Sponsored Activity Fund (21)</u>	<u>Public Purpose Trust (27)</u>	<u>Other Compt Approved (28)</u>	<u>Athletic / Activity (29)</u>	<u>Capital Reserve (690. 1850) (31)</u>
Revenue from Local Sources	58,484,908.83					
Revenue from State Sources	26,926,370.50					
Revenue from Federal Sources	1,183,452.91					
Other Financing Sources	764,183.47					
Total From All Sources	\$87,358,915.71					

	<u>Capital Reserve (1431)</u> <u>(32)</u>	<u>Other Capital Projects</u> <u>Fund (39)</u>	<u>Debt Service (40)</u>	<u>Permanent (90)</u>	<u>Total</u>
Revenue from Local Sources	642,184.54	950,344.93			60,077,438.30
Revenue from State Sources					26,926,370.50
Revenue from Federal Sources					1,183,452.91
Other Financing Sources			6,063,304.01		6,827,487.48
Total From All Sources	\$642,184.54	\$950,344.93	\$6,063,304.01		\$95,014,749.19

General Fund (10)

	<u>Total</u>
1000 Instruction	
100 Personnel Services – Salaries	
120 Professional – Educational	22,701,066.29
130 Professional – Other	34,164.69
150 Office / Clerical	85.84
180 Service Work	85,156.33
190 Instructional Assistant	1,527,671.15
Total Personnel Services – Salaries	\$24,348,144.30
200 Personnel Services – Employee Benefits	
210 Group Insurance – Contracted Provider	5,618,414.67
220 Social Security Contributions	1,795,188.97
230 PSERS Retirement Contributions	8,202,524.97
250 Unemployment Compensation	33,382.04
260 Workers’ Compensation	123,229.09
Total Personnel Services – Employee Benefits	\$15,772,739.74
300 Purchased Professional and Technical Services	
322 Professional Educational Services – Ius	1,538,139.08
323 Professional Educational Services – Other Educational Agencies	22,549.63
329 Professional Educational Services – Other	1,160,841.13
330 Other Professional Services	3,541.00
Total Purchased Professional and Technical Services	\$2,725,070.84
400 Purchased Property Services	
410 Cleaning Services	157.77
430 Repairs and Maintenance Services	10,665.13
440 Rentals	12,709.99
Total Purchased Property Services	\$23,532.89
500 Other Purchased Services	
510 Student Transportation Services	71,327.50
549 Other Advertising/Public Relations	1,050.00
561 Tuition To Other School Districts Within the State	22,092.95
562 Tuition To Pennsylvania Charter Schools	1,829,988.88
563 Tuition To Nonpublic Schools	4,070,678.59
564 Tuition To Career and Technology Centers	1,653,435.12
566 Tuition To Institutions of Higher Education and Technical Institutes	3,902.94
567 Tuition To Approved Private Schools (APS) and PA Chartered Schools for the Deaf and Blind	334,771.99
568 Tuition To Private Residential Rehabilitative Institutions (PRRI) [In-State] and Detention Centers	44,329.30
580 Travel	16,036.41
594 IU Payment By Withholding for Institutionalized Children’s Programs – Special Classes	6,840.99
Total Other Purchased Services	\$8,054,454.67
600 Supplies	
610 General Supplies	462,275.60
630 Food	1,065.62
640 Books and Periodicals	334,580.43
650 Supplies & Fees – Technology Related	11,075.39

General Fund (10)

		<u>Total</u>
1000 Instruction		
Total Supplies		\$808,997.04
700 Property		
752 Capital Equipment – Original and Additional		30,477.40
Total Property		\$30,477.40
800 Other Objects		
810 Dues and Fees		6,656.95
Total Other Objects		\$6,656.95
Total 1000 Instruction		\$51,770,073.83

General Fund (10)

1100 Regular Programs – Elementary / Secondary

	<u>Elementary</u>	<u>Secondary</u>	<u>Federal</u>	<u>Total</u>
100 Personnel Services – Salaries				
120 Professional – Educational	9,288,901.42	8,515,666.46	553,771.76	18,358,339.64
130 Professional – Other	34,164.69			34,164.69
180 Service Work	85,156.33			85,156.33
190 Instructional Assistant	159,308.06			159,308.06
Total Personnel Services – Salaries	\$9,567,530.50	\$8,515,666.46	\$553,771.76	\$18,636,968.72
200 Personnel Services – Employee Benefits				
210 Group Insurance – Contracted Provider	2,177,925.04	2,016,583.87	97,949.82	4,292,458.73
220 Social Security Contributions	721,206.32	625,867.36	40,745.84	1,387,819.52
230 PSERS Retirement Contributions	3,379,541.41	2,885,720.11	91,165.75	6,356,427.27
250 Unemployment Compensation	17,051.28	16,330.76		33,382.04
260 Workers’ Compensation	48,608.84	43,322.82	2,756.45	94,688.11
Total Personnel Services – Employee Benefits	\$6,344,332.89	\$5,587,824.92	\$232,617.86	\$12,164,775.67
300 Purchased Professional and Technical Services				
322 Professional Educational Services – Ius	69,999.46	452,885.95		522,885.41
323 Professional Educational Services – Other Educational Agencies	15,500.00			15,500.00
329 Professional Educational Services – Other	55,588.51	53,239.57		108,828.08
330 Other Professional Services	1,060.00	2,481.00		3,541.00
Total Purchased Professional and Technical Services	\$142,147.97	\$508,606.52		\$650,754.49
400 Purchased Property Services				
410 Cleaning Services		157.77		157.77
430 Repairs and Maintenance Services	2,906.34	7,758.79		10,665.13
440 Rentals		12,709.99		12,709.99
Total Purchased Property Services	\$2,906.34	\$20,626.55		\$23,532.89
500 Other Purchased Services				
510 Student Transportation Services	30,080.41	34,611.07		64,691.48
562 Tuition To Pennsylvania Charter Schools	241,367.80	478,888.73		720,256.53
580 Travel	2,827.71	5,363.19		8,190.90
Total Other Purchased Services	\$274,275.92	\$518,862.99		\$793,138.91
600 Supplies				
610 General Supplies	154,852.54	220,975.70	15,902.23	391,730.47
630 Food		420.50		420.50
640 Books and Periodicals	240,439.70	89,621.35		330,061.05
650 Supplies & Fees – Technology Related	3,600.00	3,725.39		7,325.39
Total Supplies	\$398,892.24	\$314,742.94	\$15,902.23	\$729,537.41
700 Property				
752 Capital Equipment – Original and Additional	5,331.70	24,944.26		30,275.96
Total Property	\$5,331.70	\$24,944.26		\$30,275.96
800 Other Objects				
810 Dues and Fees	147.00	5,953.95		6,100.95
Total Other Objects	\$147.00	\$5,953.95		\$6,100.95
Total 1100 Regular Programs – Elementary / Secondary	\$16,735,564.56	\$15,497,228.59	\$802,291.85	\$33,035,085.00

General Fund (10)

1110 Regular Programs

	<u>Elementary</u>	<u>Secondary</u>	<u>Federal</u>	<u>Total</u>
100 Personnel Services – Salaries				
120 Professional – Educational	9,288,901.42	8,515,666.46	553,771.76	18,358,339.64
130 Professional – Other	34,164.69			34,164.69
180 Service Work	85,156.33			85,156.33
190 Instructional Assistant	159,308.06			159,308.06
Total Personnel Services – Salaries	\$9,567,530.50	\$8,515,666.46	\$553,771.76	\$18,636,968.72
200 Personnel Services – Employee Benefits				
210 Group Insurance – Contracted Provider	2,177,925.04	2,016,583.87	97,949.82	4,292,458.73
220 Social Security Contributions	721,206.32	625,867.36	40,745.84	1,387,819.52
230 PSERS Retirement Contributions	3,379,541.41	2,885,720.11	91,165.75	6,356,427.27
250 Unemployment Compensation	17,051.28	16,330.76		33,382.04
260 Workers’ Compensation	48,608.84	43,322.82	2,756.45	94,688.11
Total Personnel Services – Employee Benefits	\$6,344,332.89	\$5,587,824.92	\$232,617.86	\$12,164,775.67
300 Purchased Professional and Technical Services				
322 Professional Educational Services – Ius	69,999.46	452,885.95		522,885.41
323 Professional Educational Services – Other Educational Agencies	15,500.00			15,500.00
329 Professional Educational Services – Other	55,588.51	53,239.57		108,828.08
330 Other Professional Services	1,060.00	2,481.00		3,541.00
Total Purchased Professional and Technical Services	\$142,147.97	\$508,606.52		\$650,754.49
400 Purchased Property Services				
410 Cleaning Services		157.77		157.77
430 Repairs and Maintenance Services	2,906.34	7,758.79		10,665.13
440 Rentals		12,709.99		12,709.99
Total Purchased Property Services	\$2,906.34	\$20,626.55		\$23,532.89
500 Other Purchased Services				
510 Student Transportation Services	30,080.41	34,611.07		64,691.48
562 Tuition To Pennsylvania Charter Schools	241,367.80	478,888.73		720,256.53
580 Travel	2,827.71	5,363.19		8,190.90
Total Other Purchased Services	\$274,275.92	\$518,862.99		\$793,138.91
600 Supplies				
610 General Supplies	154,852.54	220,975.70	15,902.23	391,730.47
630 Food		420.50		420.50
640 Books and Periodicals	240,439.70	89,621.35		330,061.05
650 Supplies & Fees – Technology Related	3,600.00	3,725.39		7,325.39
Total Supplies	\$398,892.24	\$314,742.94	\$15,902.23	\$729,537.41
700 Property				
752 Capital Equipment – Original and Additional	5,331.70	24,944.26		30,275.96
Total Property	\$5,331.70	\$24,944.26		\$30,275.96
800 Other Objects				
810 Dues and Fees	147.00	5,953.95		6,100.95
Total Other Objects	\$147.00	\$5,953.95		\$6,100.95
Total 1110 Regular Programs	\$16,735,564.56	\$15,497,228.59	\$802,291.85	\$33,035,085.00

General Fund (10)

1200 Special Programs – Elementary / Secondary

	<u>Elementary</u>	<u>Secondary</u>	<u>Federal</u>	<u>Total</u>
100 Personnel Services – Salaries				
120 Professional – Educational	1,802,775.18	1,704,655.96	543,249.76	4,050,680.90
190 Instructional Assistant	839,169.72	393,960.97		1,233,130.69
Total Personnel Services – Salaries	\$2,641,944.90	\$2,098,616.93	\$543,249.76	\$5,283,811.59
200 Personnel Services – Employee Benefits				
210 Group Insurance – Contracted Provider	646,134.25	503,418.38	127,011.56	1,276,564.19
220 Social Security Contributions	195,673.74	155,425.35	40,089.68	391,188.77
230 PSERS Retirement Contributions	912,512.11	768,996.40	92,080.97	1,773,589.48
260 Workers' Compensation	13,211.80	10,475.75	2,716.33	26,403.88
Total Personnel Services – Employee Benefits	\$1,767,531.90	\$1,438,315.88	\$261,898.54	\$3,467,746.32
300 Purchased Professional and Technical Services				
322 Professional Educational Services – lus	293,318.09	709,625.82		1,002,943.91
323 Professional Educational Services – Other Educational Agencies		7,049.63		7,049.63
329 Professional Educational Services – Other	449,743.64	550,964.51		1,000,708.15
Total Purchased Professional and Technical Services	\$743,061.73	\$1,267,639.96		\$2,010,701.69
500 Other Purchased Services				
510 Student Transportation Services	810.02	1,775.20		2,585.22
561 Tuition To Other School Districts Within the State		10,382.08		10,382.08
562 Tuition To Pennsylvania Charter Schools	220,794.68	888,937.67		1,109,732.35
563 Tuition To Nonpublic Schools	1,451,523.54	2,547,365.05		3,998,888.59
564 Tuition To Career and Technology Centers		30,071.16		30,071.16
567 Tuition To Approved Private Schools (APS) and PA Chartered Schools for the Deaf and Blind	103,248.71	231,523.28		334,771.99
568 Tuition To Private Residential Rehabilitative Institutions (PRRI) [In-State] and Detention Centers	6,110.58	38,218.72		44,329.30
580 Travel	345.76			345.76
594 IU Payment By Withholding for Institutionalized Children's Programs – Special Classes	1,056.12	5,784.87		6,840.99
Total Other Purchased Services	\$1,783,889.41	\$3,754,058.03		\$5,537,947.44
600 Supplies				
610 General Supplies	33,125.16	13,844.85		46,970.01
640 Books and Periodicals	3,710.45	808.93		4,519.38
650 Supplies & Fees – Technology Related	1,896.38	1,853.62		3,750.00
Total Supplies	\$38,731.99	\$16,507.40		\$55,239.39
700 Property				
752 Capital Equipment – Original and Additional		201.44		201.44
Total Property		\$201.44		\$201.44
800 Other Objects				
810 Dues and Fees	556.00			556.00
Total Other Objects	\$556.00			\$556.00
Total 1200 Special Programs – Elementary / Secondary	\$6,975,715.93	\$8,575,339.64	\$805,148.30	\$16,356,203.87

General Fund (10)

1210 Life Skills Support

	<u>Elementary</u>	<u>Secondary</u>	<u>Federal</u>	<u>Total</u>
100 Personnel Services – Salaries				
120 Professional – Educational	175,657.31	188,727.01	42,663.76	407,048.08
190 Instructional Assistant	103,768.21	189,785.49		293,553.70
Total Personnel Services – Salaries	\$279,425.52	\$378,512.50	\$42,663.76	\$700,601.78
200 Personnel Services – Employee Benefits				
210 Group Insurance – Contracted Provider	85,102.41	109,277.59	12,772.56	207,152.56
220 Social Security Contributions	20,911.21	28,011.56	3,118.66	52,041.43
230 PSERS Retirement Contributions	87,661.19	134,332.58	7,231.52	229,225.29
260 Workers' Compensation	1,400.74	1,889.26	213.34	3,503.34
Total Personnel Services – Employee Benefits	\$195,075.55	\$273,510.99	\$23,336.08	\$491,922.62
300 Purchased Professional and Technical Services				
322 Professional Educational Services – lus	8,451.00	203,205.41		211,656.41
Total Purchased Professional and Technical Services	\$8,451.00	\$203,205.41		\$211,656.41
500 Other Purchased Services				
510 Student Transportation Services	810.02	1,019.35		1,829.37
Total Other Purchased Services	\$810.02	\$1,019.35		\$1,829.37
600 Supplies				
610 General Supplies	5,198.84	4,876.14		10,074.98
640 Books and Periodicals	1,128.95			1,128.95
Total Supplies	\$6,327.79	\$4,876.14		\$11,203.93
Total 1210 Life Skills Support	\$490,089.88	\$861,124.39	\$65,999.84	\$1,417,214.11

General Fund (10)

1220 Sensory Support

	<u>Elementary</u>	<u>Secondary</u>	<u>Federal</u>	<u>Total</u>
100 Personnel Services – Salaries				
120 Professional – Educational	348,662.33	177,735.00		526,397.33
Total Personnel Services – Salaries	\$348,662.33	\$177,735.00		\$526,397.33
200 Personnel Services – Employee Benefits				
210 Group Insurance – Contracted Provider	63,298.40	12,799.33		76,097.73
220 Social Security Contributions	25,717.30	13,474.08		39,191.38
230 PSERS Retirement Contributions	118,095.15	60,252.23		178,347.38
260 Workers' Compensation	1,741.97	888.68		2,630.65
Total Personnel Services – Employee Benefits	\$208,852.82	\$87,414.32		\$296,267.14
300 Purchased Professional and Technical Services				
322 Professional Educational Services – Ius	233,980.15	174,687.19		408,667.34
329 Professional Educational Services – Other	9,659.93	19,397.34		29,057.27
Total Purchased Professional and Technical Services	\$243,640.08	\$194,084.53		\$437,724.61
500 Other Purchased Services				
580 Travel	345.76			345.76
Total Other Purchased Services	\$345.76			\$345.76
600 Supplies				
610 General Supplies	4,287.21	4,141.61		8,428.82
640 Books and Periodicals		59.40		59.40
Total Supplies	\$4,287.21	\$4,201.01		\$8,488.22
800 Other Objects				
810 Dues and Fees	556.00			556.00
Total Other Objects	\$556.00			\$556.00
Total 1220 Sensory Support	\$806,344.20	\$463,434.86		\$1,269,779.06

General Fund (10)

1230 Emotional Support

	<u>Elementary</u>	<u>Secondary</u>	<u>Federal</u>	<u>Total</u>
100 Personnel Services – Salaries				
120 Professional – Educational	538,559.43	507,034.99	78,623.00	1,124,217.42
190 Instructional Assistant	375,722.75	95,460.42		471,183.17
Total Personnel Services – Salaries	\$914,282.18	\$602,495.41	\$78,623.00	\$1,595,400.59
200 Personnel Services – Employee Benefits				
210 Group Insurance – Contracted Provider	217,876.42	119,820.31	28,124.70	365,821.43
220 Social Security Contributions	68,061.33	44,904.82	5,693.90	118,660.05
230 PSERS Retirement Contributions	322,957.53	203,615.95	13,326.61	539,900.09
260 Workers' Compensation	4,581.88	3,010.69	393.12	7,985.69
Total Personnel Services – Employee Benefits	\$613,477.16	\$371,351.77	\$47,538.33	\$1,032,367.26
300 Purchased Professional and Technical Services				
322 Professional Educational Services – lus	1,675.57	290,343.67		292,019.24
329 Professional Educational Services – Other	8,962.00	122,028.55		130,990.55
Total Purchased Professional and Technical Services	\$10,637.57	\$412,372.22		\$423,009.79
500 Other Purchased Services				
561 Tuition To Other School Districts Within the State		8,670.76		8,670.76
563 Tuition To Nonpublic Schools	1,435,006.50	2,326,727.70		3,761,734.20
Total Other Purchased Services	\$1,435,006.50	\$2,335,398.46		\$3,770,404.96
600 Supplies				
610 General Supplies	15,971.67	3,139.73		19,111.40
640 Books and Periodicals	1,023.05			1,023.05
Total Supplies	\$16,994.72	\$3,139.73		\$20,134.45
Total 1230 Emotional Support	\$2,990,398.13	\$3,724,757.59	\$126,161.33	\$6,841,317.05

General Fund (10)

1240 Academic Support

	<u>Elementary</u>	<u>Secondary</u>	<u>Federal</u>	<u>Total</u>
100 Personnel Services – Salaries				
120 Professional – Educational	685,963.09	794,378.42	421,963.00	1,902,304.51
190 Instructional Assistant	334,468.99	101,027.61		435,496.60
Total Personnel Services – Salaries	\$1,020,432.08	\$895,406.03	\$421,963.00	\$2,337,801.11
200 Personnel Services – Employee Benefits				
210 Group Insurance – Contracted Provider	279,824.44	261,521.15	86,114.30	627,459.89
220 Social Security Contributions	74,982.33	65,654.53	31,277.12	171,913.98
230 PSERS Retirement Contributions	361,748.85	359,050.42	71,522.84	792,322.11
260 Workers' Compensation	5,099.98	4,469.97	2,109.87	11,679.82
Total Personnel Services – Employee Benefits	\$721,655.60	\$690,696.07	\$191,024.13	\$1,603,375.80
300 Purchased Professional and Technical Services				
322 Professional Educational Services – lus	780.00	7,887.68		8,667.68
323 Professional Educational Services – Other Educational Agencies		2,994.00		2,994.00
329 Professional Educational Services – Other	13,518.00	47.25		13,565.25
Total Purchased Professional and Technical Services	\$14,298.00	\$10,928.93		\$25,226.93
500 Other Purchased Services				
510 Student Transportation Services		755.85		755.85
563 Tuition To Nonpublic Schools		10,372.00		10,372.00
Total Other Purchased Services		\$11,127.85		\$11,127.85
600 Supplies				
610 General Supplies	5,998.66	27.96		6,026.62
640 Books and Periodicals	1,558.45	749.53		2,307.98
650 Supplies & Fees – Technology Related	1,896.38	1,853.62		3,750.00
Total Supplies	\$9,453.49	\$2,631.11		\$12,084.60
Total 1240 Academic Support	\$1,765,839.17	\$1,610,789.99	\$612,987.13	\$3,989,616.29

General Fund (10)

	<u>Elementary</u>	<u>Secondary</u>	<u>Federal</u>	<u>Total</u>
1241 Learning Support – Public				
100 Personnel Services – Salaries				
120 Professional – Educational	653,957.43	773,352.17	421,963.00	1,849,272.60
190 Instructional Assistant	334,468.99	101,027.61		435,496.60
Total Personnel Services – Salaries	\$988,426.42	\$874,379.78	\$421,963.00	\$2,284,769.20
200 Personnel Services – Employee Benefits				
210 Group Insurance – Contracted Provider	270,355.38	258,255.30	86,114.30	614,724.98
220 Social Security Contributions	72,640.38	64,086.30	31,277.12	168,003.80
230 PSERS Retirement Contributions	350,898.73	351,922.63	71,522.84	774,344.20
260 Workers' Compensation	4,940.06	4,364.73	2,109.87	11,414.66
Total Personnel Services – Employee Benefits	\$698,834.55	\$678,628.96	\$191,024.13	\$1,568,487.64
300 Purchased Professional and Technical Services				
322 Professional Educational Services – lus	780.00	7,887.68		8,667.68
323 Professional Educational Services – Other Educational Agencies		2,994.00		2,994.00
329 Professional Educational Services – Other	13,518.00	47.25		13,565.25
Total Purchased Professional and Technical Services	\$14,298.00	\$10,928.93		\$25,226.93
500 Other Purchased Services				
563 Tuition To Nonpublic Schools		10,372.00		10,372.00
Total Other Purchased Services		\$10,372.00		\$10,372.00
600 Supplies				
610 General Supplies	2,702.21	27.96		2,730.17
640 Books and Periodicals	600.30	749.53		1,349.83
Total Supplies	\$3,302.51	\$777.49		\$4,080.00
Total 1241 Learning Support – Public	\$1,704,861.48	\$1,575,087.16	\$612,987.13	\$3,892,935.77

General Fund (10)

	<u>Elementary</u>	<u>Secondary</u>	<u>Federal</u>	<u>Total</u>
1243 Gifted Support				
100 Personnel Services – Salaries				
120 Professional – Educational	32,005.66	21,026.25		53,031.91
Total Personnel Services – Salaries	\$32,005.66	\$21,026.25		\$53,031.91
200 Personnel Services – Employee Benefits				
210 Group Insurance – Contracted Provider	9,469.06	3,265.85		12,734.91
220 Social Security Contributions	2,341.95	1,568.23		3,910.18
230 PSERS Retirement Contributions	10,850.12	7,127.79		17,977.91
260 Workers' Compensation	159.92	105.24		265.16
Total Personnel Services – Employee Benefits	\$22,821.05	\$12,067.11		\$34,888.16
500 Other Purchased Services				
510 Student Transportation Services		755.85		755.85
Total Other Purchased Services		\$755.85		\$755.85
600 Supplies				
610 General Supplies	3,296.45			3,296.45
640 Books and Periodicals	958.15			958.15
650 Supplies & Fees – Technology Related	1,896.38	1,853.62		3,750.00
Total Supplies	\$6,150.98	\$1,853.62		\$8,004.60
Total 1243 Gifted Support	\$60,977.69	\$35,702.83		\$96,680.52

General Fund (10)

1260 Physical Support

300 Purchased Professional and Technical Services

	<u>Elementary</u>	<u>Secondary</u>	<u>Federal</u>	<u>Total</u>
322 Professional Educational Services – Ius	18,929.65	21,051.74		39,981.39
329 Professional Educational Services – Other	413,313.71	375,691.37		789,005.08
Total Purchased Professional and Technical Services	\$432,243.36	\$396,743.11		\$828,986.47
Total 1260 Physical Support	\$432,243.36	\$396,743.11		\$828,986.47

General Fund (10)

1270 Multi-Handicapped Support

300 Purchased Professional and Technical Services

	<u>Elementary</u>	<u>Secondary</u>	<u>Federal</u>	<u>Total</u>
322 Professional Educational Services – Ius		12,450.13		12,450.13
329 Professional Educational Services – Other	4,290.00	33,800.00		38,090.00
Total Purchased Professional and Technical Services	\$4,290.00	\$46,250.13		\$50,540.13

500 Other Purchased Services

563 Tuition To Nonpublic Schools	16,517.04	210,265.35		226,782.39
Total Other Purchased Services	\$16,517.04	\$210,265.35		\$226,782.39

600 Supplies

610 General Supplies	1,668.78	1,659.41		3,328.19
Total Supplies	\$1,668.78	\$1,659.41		\$3,328.19

700 Property

752 Capital Equipment – Original and Additional		201.44		201.44
Total Property		\$201.44		\$201.44

Total 1270 Multi-Handicapped Support	\$22,475.82	\$258,376.33		\$280,852.15
---	--------------------	---------------------	--	---------------------

General Fund (10)

1280 Early Intervention Support

300 Purchased Professional and Technical Services

322 Professional Educational Services – lus

Total Purchased Professional and Technical Services

Total 1280 Early Intervention Support

Elementary

Secondary

Federal

Total

29,501.72

29,501.72

\$29,501.72

\$29,501.72

\$29,501.72

\$29,501.72

General Fund (10)

1290 Special Programs - Other Support

100 Personnel Services – Salaries

	<u>Elementary</u>	<u>Secondary</u>	<u>Federal</u>	<u>Total</u>
120 Professional – Educational	53,933.02	36,780.54		90,713.56
190 Instructional Assistant	25,209.77	7,687.45		32,897.22
Total Personnel Services – Salaries	\$79,142.79	\$44,467.99		\$123,610.78

200 Personnel Services – Employee Benefits

210 Group Insurance – Contracted Provider	32.58			32.58
220 Social Security Contributions	6,001.57	3,380.36		9,381.93
230 PSERS Retirement Contributions	22,049.39	11,745.22		33,794.61
260 Workers' Compensation	387.23	217.15		604.38
Total Personnel Services – Employee Benefits	\$28,470.77	\$15,342.73		\$43,813.50

300 Purchased Professional and Technical Services

323 Professional Educational Services – Other Educational Agencies		4,055.63		4,055.63
Total Purchased Professional and Technical Services		\$4,055.63		\$4,055.63

500 Other Purchased Services

561 Tuition To Other School Districts Within the State		1,711.32		1,711.32
562 Tuition To Pennsylvania Charter Schools	220,794.68	888,937.67		1,109,732.35
564 Tuition To Career and Technology Centers		30,071.16		30,071.16
567 Tuition To Approved Private Schools (APS) and PA Chartered Schools for the Deaf and Blind	103,248.71	231,523.28		334,771.99
568 Tuition To Private Residential Rehabilitative Institutions (PRRI) [In-State] and Detention Centers	6,110.58	38,218.72		44,329.30
594 IU Payment By Withholding for Institutionalized Children’s Programs – Special Classes	1,056.12	5,784.87		6,840.99
Total Other Purchased Services	\$331,210.09	\$1,196,247.02		\$1,527,457.11

Total 1290 Special Programs - Other Support

	\$438,823.65	\$1,260,113.37		\$1,698,937.02
--	---------------------	-----------------------	--	-----------------------

General Fund (10)

1300 Vocational Education

Elementary

Secondary

Federal

Total

500 Other Purchased Services

564 Tuition To Career and Technology Centers

1,623,363.96

1,623,363.96

Total Other Purchased Services

\$1,623,363.96

\$1,623,363.96

Total 1300 Vocational Education

\$1,623,363.96

\$1,623,363.96

General Fund (10)

	<u>Elementary</u>	<u>Secondary</u>	<u>Federal</u>	<u>Total</u>
1400 Other Instructional Programs – Elementary / Secondary				
100 Personnel Services – Salaries				
120 Professional – Educational		1,312.50		1,312.50
Total Personnel Services – Salaries		\$1,312.50		\$1,312.50
200 Personnel Services – Employee Benefits				
220 Social Security Contributions		95.76		95.76
230 PSERS Retirement Contributions		444.92		444.92
260 Workers’ Compensation		6.55		6.55
Total Personnel Services – Employee Benefits		\$547.23		\$547.23
300 Purchased Professional and Technical Services				
322 Professional Educational Services – Ius		2,546.97		2,546.97
329 Professional Educational Services – Other		44,081.50		44,081.50
Total Purchased Professional and Technical Services		\$46,628.47		\$46,628.47
500 Other Purchased Services				
561 Tuition To Other School Districts Within the State		11,710.87		11,710.87
563 Tuition To Nonpublic Schools	27,985.00	43,805.00		71,790.00
566 Tuition To Institutions of Higher Education and Technical Institutes			3,902.94	3,902.94
Total Other Purchased Services	\$27,985.00	\$55,515.87	\$3,902.94	\$87,403.81
Total 1400 Other Instructional Programs – Elementary / Secondary	\$27,985.00	\$104,004.07	\$3,902.94	\$135,892.01

General Fund (10)

1430 Homebound Instruction

100 Personnel Services – Salaries

120 Professional – Educational

Total Personnel Services – Salaries

200 Personnel Services – Employee Benefits

220 Social Security Contributions

230 PSERS Retirement Contributions

260 Workers’ Compensation

Total Personnel Services – Employee Benefits

Total 1430 Homebound Instruction

	<u>Elementary</u>	<u>Secondary</u>	<u>Federal</u>	<u>Total</u>
		1,312.50		1,312.50
		\$1,312.50		\$1,312.50
		95.76		95.76
		444.92		444.92
		6.55		6.55
		\$547.23		\$547.23
		\$1,859.73		\$1,859.73

General Fund (10)

	<u>Elementary</u>	<u>Secondary</u>	<u>Federal</u>	<u>Total</u>
1440 Alternative Regular Education Programs				
300 <u>Purchased Professional and Technical Services</u>				
322 Professional Educational Services – lus		2,546.97		2,546.97
Total Purchased Professional and Technical Services		\$2,546.97		\$2,546.97
500 <u>Other Purchased Services</u>				
561 Tuition To Other School Districts Within the State		11,710.87		11,710.87
563 Tuition To Nonpublic Schools	27,985.00	43,805.00		71,790.00
Total Other Purchased Services	\$27,985.00	\$55,515.87		\$83,500.87
Total 1440 Alternative Regular Education Programs	\$27,985.00	\$58,062.84		\$86,047.84

General Fund (10)

1441 Adjudicated / Court-Placed Programs

Elementary

Secondary

Federal

Total

500 Other Purchased Services

561 Tuition To Other School Districts Within the State

11,710.87

11,710.87

Total Other Purchased Services

\$11,710.87

\$11,710.87

Total 1441 Adjudicated / Court-Placed Programs

\$11,710.87

\$11,710.87

General Fund (10)

	<u>Elementary</u>	<u>Secondary</u>	<u>Federal</u>	<u>Total</u>
1442 Alternative Education Programs				
300 <u>Purchased Professional and Technical Services</u>				
322 Professional Educational Services – lus		2,546.97		2,546.97
Total Purchased Professional and Technical Services		\$2,546.97		\$2,546.97
500 <u>Other Purchased Services</u>				
563 Tuition To Nonpublic Schools	27,985.00	43,805.00		71,790.00
Total Other Purchased Services	\$27,985.00	\$43,805.00		\$71,790.00
Total 1442 Alternative Education Programs	\$27,985.00	\$46,351.97		\$74,336.97

General Fund (10)

	<u>Elementary</u>	<u>Secondary</u>	<u>Federal</u>	<u>Total</u>
1490 Additional Other Instructional Programs				
300 <u>Purchased Professional and Technical Services</u>				
329 Professional Educational Services – Other		44,081.50		44,081.50
Total Purchased Professional and Technical Services		\$44,081.50		\$44,081.50
500 <u>Other Purchased Services</u>				
566 Tuition To Institutions of Higher Education and Technical Institutes			3,902.94	3,902.94
Total Other Purchased Services			\$3,902.94	\$3,902.94
Total 1490 Additional Other Instructional Programs		\$44,081.50	\$3,902.94	\$47,984.44

General Fund (10)

1500 Nonpublic School Programs

300 Purchased Professional and Technical Services

322 Professional Educational Services – lus

Total Purchased Professional and Technical Services

Total 1500 Nonpublic School Programs

Elementary

Secondary

Federal

Total

9,762.79

9,762.79

\$9,762.79

\$9,762.79

\$9,762.79

\$9,762.79

General Fund (10)

1800 Pre-Kindergarten

Elementary Secondary Federal Total

100	<u>Personnel Services – Salaries</u>			
	120 Professional – Educational			290,733.25
	150 Office / Clerical			85.84
	190 Instructional Assistant			135,232.40
Total Personnel Services – Salaries				\$426,051.49
200	<u>Personnel Services – Employee Benefits</u>			
	210 Group Insurance – Contracted Provider			49,391.75
	220 Social Security Contributions			16,084.92
	230 PSERS Retirement Contributions			72,063.30
	260 Workers' Compensation			2,130.55
Total Personnel Services – Employee Benefits				\$139,670.52
300	<u>Purchased Professional and Technical Services</u>			
	329 Professional Educational Services – Other			7,223.40
Total Purchased Professional and Technical Services				\$7,223.40
500	<u>Other Purchased Services</u>			
	510 Student Transportation Services			4,050.80
	549 Other Advertising/Public Relations			1,050.00
	580 Travel			7,499.75
Total Other Purchased Services				\$12,600.55
600	<u>Supplies</u>			
	610 General Supplies			23,575.12
	630 Food			645.12
Total Supplies				\$24,220.24
Total 1800 Pre-Kindergarten				\$609,766.20

General Fund (10)

1801 Pre-K Instruction

	<u>Elementary</u>	<u>Secondary</u>	<u>Federal</u>	<u>Total</u>
100 Personnel Services – Salaries				
120 Professional – Educational				290,733.25
150 Office / Clerical				85.84
190 Instructional Assistant				135,232.40
Total Personnel Services – Salaries				\$426,051.49
200 Personnel Services – Employee Benefits				
210 Group Insurance – Contracted Provider				49,391.75
220 Social Security Contributions				16,084.92
230 PSERS Retirement Contributions				72,063.30
260 Workers' Compensation				2,130.55
Total Personnel Services – Employee Benefits				\$139,670.52
300 Purchased Professional and Technical Services				
329 Professional Educational Services – Other				7,223.40
Total Purchased Professional and Technical Services				\$7,223.40
500 Other Purchased Services				
510 Student Transportation Services				4,050.80
549 Other Advertising/Public Relations				1,050.00
580 Travel				7,499.75
Total Other Purchased Services				\$12,600.55
600 Supplies				
610 General Supplies				23,575.12
Total Supplies				\$23,575.12
Total 1801 Pre-K Instruction				\$609,121.08

General Fund (10)

1805 Pre-K Food Services

Elementary

Secondary

Federal

Total

600 Supplies

630 Food

645.12

Total Supplies

\$645.12

Total 1805 Pre-K Food Services

\$645.12

General Fund (10)

2000 Support Services

Total

100 Personnel Services – Salaries

100 Personnel Services – Salaries 9,492,978.97

Total Personnel Services – Salaries \$9,492,978.97

200 Personnel Services – Employee Benefits

210 Group Insurance – Contracted Provider 2,101,964.36

220 Social Security Contributions 708,643.48

230 PSERS Retirement Contributions 3,124,652.28

240 Tuition Reimbursement 181,958.00

260 Workers' Compensation 47,091.27

291 Other Retirement Plans 16,222.50

Total Personnel Services – Employee Benefits \$6,180,531.89

300 Purchased Professional and Technical Services

310 Official / Administrative Services 541,806.88

322 Professional Educational Services – Ius 53,057.94

329 Professional Educational Services – Other 513,653.21

330 Other Professional Services 118,404.08

340 Technical Services 59,334.51

350 Security / Safety Services 3,912.00

360 Employee Training and Development Services 55,087.87

390 Other Purchased Professional and Technical Services 7,908.24

Total Purchased Professional and Technical Services \$1,353,164.73

400 Purchased Property Services

410 Cleaning Services 46,700.20

420 Utility Services 158,415.81

430 Repairs and Maintenance Services 493,606.79

440 Rentals 144,158.07

460 Extermination Services 11,708.64

Total Purchased Property Services \$854,589.51

500 Other Purchased Services

513 Contracted Carriers 4,097,797.84

516 Student Transportation Services From the IU 88,250.80

520 Insurance – General 80,917.75

523 General Property and Liability Insurance 258,309.00

530 Communications 245,352.40

549 Other Advertising/Public Relations 10,821.73

580 Travel 103,438.45

595 IU Payments By Withholding 53,677.57

Total Other Purchased Services \$4,938,565.54

600 Supplies

610 General Supplies 892,724.05

620 Energy 821,876.59

630 Food 17,985.45

640 Books and Periodicals 87,347.49

650 Supplies & Fees – Technology Related 286,274.97

General Fund (10)

2000 Support Services

Total Supplies Total
\$2,106,208.55

700 Property

736 Technology Equipment Lease 363,863.00

752 Capital Equipment – Original and Additional 80,556.13

756 Capitalized Technology Equipment – Original 300,609.30

Total Property **\$745,028.43**

800 Other Objects

810 Dues and Fees 159,867.71

890 Miscellaneous Expenditures 1,600.65

Total Other Objects **\$161,468.36**

Total 2000 Support Services **\$25,832,535.98**

General Fund (10)

2100 Support Services – Students

	<u>Elementary</u>	<u>Secondary</u>	<u>Federal</u>	<u>Total</u>
100 Personnel Services – Salaries				
100 Personnel Services – Salaries	703,396.71	966,072.47	108,569.86	1,897,250.60
Total Personnel Services – Salaries	\$703,396.71	\$966,072.47	\$108,569.86	\$1,897,250.60
200 Personnel Services – Employee Benefits				
210 Group Insurance – Contracted Provider	186,279.00	169,035.48	16,224.11	410,166.93
220 Social Security Contributions	51,401.70	71,945.34	8,121.68	140,109.85
230 PSERS Retirement Contributions	238,111.48	327,498.87	18,471.87	642,523.38
260 Workers' Compensation	3,525.12	4,830.49	544.92	9,493.02
Total Personnel Services – Employee Benefits	\$479,317.30	\$573,310.18	\$43,362.58	\$1,202,293.18
300 Purchased Professional and Technical Services				
322 Professional Educational Services – Ius	36,307.94	9,450.00		45,757.94
329 Professional Educational Services – Other	56,122.96	10,271.08		66,394.04
330 Other Professional Services	21,210.00	10,710.00		31,920.00
Total Purchased Professional and Technical Services	\$113,640.90	\$30,431.08		\$144,071.98
500 Other Purchased Services				
580 Travel	1,780.17	1,075.18		8,021.82
Total Other Purchased Services	\$1,780.17	\$1,075.18		\$8,021.82
600 Supplies				
610 General Supplies	6,807.21	14,240.21		21,074.17
650 Supplies & Fees – Technology Related				22,180.98
Total Supplies	\$6,807.21	\$14,240.21		\$43,255.15
800 Other Objects				
810 Dues and Fees	699.92	994.92		1,769.84
Total Other Objects	\$699.92	\$994.92		\$1,769.84
Total 2100 Support Services – Students	\$1,305,642.21	\$1,586,124.04	\$151,932.44	\$3,296,662.57

General Fund (10)

	<u>Elementary</u>	<u>Secondary</u>	<u>Federal</u>	<u>Total</u>
2110 Supervision of Student Services				
100 Personnel Services – Salaries				
100 Personnel Services – Salaries	89,412.46	89,412.44		178,824.90
Total Personnel Services – Salaries	\$89,412.46	\$89,412.44		\$178,824.90
200 Personnel Services – Employee Benefits				
210 Group Insurance – Contracted Provider	5,833.96	5,833.84		11,667.80
220 Social Security Contributions	6,825.52	6,825.49		13,651.01
230 PSERS Retirement Contributions	30,311.02	30,310.88		60,621.90
260 Workers' Compensation	447.15	446.96		894.11
Total Personnel Services – Employee Benefits	\$43,417.65	\$43,417.17		\$86,834.82
500 Other Purchased Services				
580 Travel	999.28	999.28		1,998.56
Total Other Purchased Services	\$999.28	\$999.28		\$1,998.56
600 Supplies				
610 General Supplies	416.58	418.39		834.97
Total Supplies	\$416.58	\$418.39		\$834.97
800 Other Objects				
810 Dues and Fees	699.92	994.92		1,694.84
Total Other Objects	\$699.92	\$994.92		\$1,694.84
Total 2110 Supervision of Student Services	\$134,945.89	\$135,242.20		\$270,188.09

General Fund (10)

	<u>Elementary</u>	<u>Secondary</u>	<u>Federal</u>	<u>Total</u>
2111 Supervision of Student Services – Head of Component				
100 Personnel Services – Salaries				
100 Personnel Services – Salaries	89,412.46	89,412.44		178,824.90
Total Personnel Services – Salaries	\$89,412.46	\$89,412.44		\$178,824.90
200 Personnel Services – Employee Benefits				
210 Group Insurance – Contracted Provider	5,833.96	5,833.84		11,667.80
220 Social Security Contributions	6,825.52	6,825.49		13,651.01
230 PSERS Retirement Contributions	30,311.02	30,310.88		60,621.90
260 Workers' Compensation	447.15	446.96		894.11
Total Personnel Services – Employee Benefits	\$43,417.65	\$43,417.17		\$86,834.82
500 Other Purchased Services				
580 Travel	999.28	999.28		1,998.56
Total Other Purchased Services	\$999.28	\$999.28		\$1,998.56
600 Supplies				
610 General Supplies	416.58	418.39		834.97
Total Supplies	\$416.58	\$418.39		\$834.97
800 Other Objects				
810 Dues and Fees	699.92	994.92		1,694.84
Total Other Objects	\$699.92	\$994.92		\$1,694.84
Total 2111 Supervision of Student Services – Head of Component	\$134,945.89	\$135,242.20		\$270,188.09

General Fund (10)

2120 Guidance Services

100 Personnel Services – Salaries

	<u>Elementary</u>	<u>Secondary</u>	<u>Federal</u>	<u>Total</u>
100 Personnel Services – Salaries	382,761.97	696,951.66		1,079,713.63
Total Personnel Services – Salaries	\$382,761.97	\$696,951.66		\$1,079,713.63

200 Personnel Services – Employee Benefits

210 Group Insurance – Contracted Provider	120,086.84	139,077.48		259,164.32
220 Social Security Contributions	27,438.64	51,740.72		79,179.36
230 PSERS Retirement Contributions	129,415.92	236,266.74		365,682.66
260 Workers' Compensation	1,913.98	3,485.02		5,399.00
Total Personnel Services – Employee Benefits	\$278,855.38	\$430,569.96		\$709,425.34

600 Supplies

610 General Supplies	770.52	11,236.47		12,006.99
Total Supplies	\$770.52	\$11,236.47		\$12,006.99

Total 2120 Guidance Services

	\$662,387.87	\$1,138,758.09		\$1,801,145.96
--	---------------------	-----------------------	--	-----------------------

General Fund (10)

	<u>Elementary</u>	<u>Secondary</u>	<u>Federal</u>	<u>Total</u>
2140 Psychological Services				
100 Personnel Services – Salaries				
100 Personnel Services – Salaries	230,140.64	167,244.29		397,384.93
Total Personnel Services – Salaries	\$230,140.64	\$167,244.29		\$397,384.93
200 Personnel Services – Employee Benefits				
210 Group Insurance – Contracted Provider	60,358.20	24,124.16		84,482.36
220 Social Security Contributions	17,055.90	12,442.73		29,498.63
230 PSERS Retirement Contributions	78,017.83	56,695.88		134,713.71
260 Workers' Compensation	1,158.57	836.20		1,994.77
Total Personnel Services – Employee Benefits	\$156,590.50	\$94,098.97		\$250,689.47
300 Purchased Professional and Technical Services				
322 Professional Educational Services – Ius	36,307.94	9,450.00		45,757.94
329 Professional Educational Services – Other	56,122.96	10,271.08		66,394.04
330 Other Professional Services	21,210.00	10,710.00		31,920.00
Total Purchased Professional and Technical Services	\$113,640.90	\$30,431.08		\$144,071.98
500 Other Purchased Services				
580 Travel	780.89	75.90		856.79
Total Other Purchased Services	\$780.89	\$75.90		\$856.79
600 Supplies				
610 General Supplies	5,620.11	2,585.35		8,205.46
Total Supplies	\$5,620.11	\$2,585.35		\$8,205.46
Total 2140 Psychological Services	\$506,773.04	\$294,435.59		\$801,208.63

General Fund (10)

	<u>Elementary</u>	<u>Secondary</u>	<u>Federal</u>	<u>Total</u>
2160 Social Work Services				
100 Personnel Services – Salaries				
100 Personnel Services – Salaries			108,569.86	214,606.32
Total Personnel Services – Salaries			\$108,569.86	\$214,606.32
200 Personnel Services – Employee Benefits				
210 Group Insurance – Contracted Provider			16,224.11	52,026.31
220 Social Security Contributions			8,121.68	15,769.03
230 PSERS Retirement Contributions			18,471.87	72,446.65
260 Workers' Compensation			544.92	1,071.53
Total Personnel Services – Employee Benefits			\$43,362.58	\$141,313.52
500 Other Purchased Services				
580 Travel				2,898.85
Total Other Purchased Services				\$2,898.85
600 Supplies				
610 General Supplies				26.75
Total Supplies				\$26.75
Total 2160 Social Work Services			\$151,932.44	\$358,845.44

General Fund (10)

	<u>Elementary</u>	<u>Secondary</u>	<u>Federal</u>	<u>Total</u>
2170 Student Accounting Services				
100 Personnel Services – Salaries				
100 Personnel Services – Salaries				13,175.10
Total Personnel Services – Salaries				\$13,175.10
200 Personnel Services – Employee Benefits				
210 Group Insurance – Contracted Provider				2,826.14
220 Social Security Contributions				993.78
230 PSERS Retirement Contributions				4,466.38
260 Workers' Compensation				65.88
Total Personnel Services – Employee Benefits				\$8,352.18
500 Other Purchased Services				
580 Travel				2,267.62
Total Other Purchased Services				\$2,267.62
600 Supplies				
650 Supplies & Fees – Technology Related				22,180.98
Total Supplies				\$22,180.98
800 Other Objects				
810 Dues and Fees				75.00
Total Other Objects				\$75.00
Total 2170 Student Accounting Services				\$46,050.88

General Fund (10)

	<u>Elementary</u>	<u>Secondary</u>	<u>Federal</u>	<u>Total</u>
2190 Other Student Services				
100 Personnel Services – Salaries				
100 Personnel Services – Salaries	1,081.64	12,464.08		13,545.72
Total Personnel Services – Salaries	\$1,081.64	\$12,464.08		\$13,545.72
200 Personnel Services – Employee Benefits				
220 Social Security Contributions	81.64	936.40		1,018.04
230 PSERS Retirement Contributions	366.71	4,225.37		4,592.08
260 Workers’ Compensation	5.42	62.31		67.73
Total Personnel Services – Employee Benefits	\$453.77	\$5,224.08		\$5,677.85
Total 2190 Other Student Services	\$1,535.41	\$17,688.16		\$19,223.57

General Fund (10)

2200 Support Services – Instructional Staff

	<u>Elementary</u>	<u>Secondary</u>	<u>Federal</u>	<u>Total</u>
100 Personnel Services – Salaries				
100 Personnel Services – Salaries	615,034.74	495,603.85		1,110,638.59
Total Personnel Services – Salaries	\$615,034.74	\$495,603.85		\$1,110,638.59
200 Personnel Services – Employee Benefits				
210 Group Insurance – Contracted Provider	140,685.49	119,079.42		259,764.91
220 Social Security Contributions	44,533.45	36,719.46		81,252.91
230 PSERS Retirement Contributions	200,156.47	164,493.50		364,649.97
240 Tuition Reimbursement	71,088.45	68,084.55		139,173.00
260 Workers' Compensation	3,010.39	2,479.91		5,490.30
Total Personnel Services – Employee Benefits	\$459,474.25	\$390,856.84		\$850,331.09
300 Purchased Professional and Technical Services				
310 Official / Administrative Services	52,250.50	51,380.51		103,631.01
322 Professional Educational Services – lus	650.00	650.00		1,300.00
340 Technical Services	5,777.93	5,777.91		11,555.84
360 Employee Training and Development Services	4,110.00		38,600.99	42,710.99
Total Purchased Professional and Technical Services	\$62,788.43	\$57,808.42	\$38,600.99	\$159,197.84
400 Purchased Property Services				
430 Repairs and Maintenance Services	77,859.33	79,544.18		157,403.51
440 Rentals	77,814.53	34,647.89		112,462.42
Total Purchased Property Services	\$155,673.86	\$114,192.07		\$269,865.93
500 Other Purchased Services				
520 Insurance – General	3,946.00	3,946.00		7,892.00
580 Travel	27,414.46	29,049.36	1,490.00	57,953.82
Total Other Purchased Services	\$31,360.46	\$32,995.36	\$1,490.00	\$65,845.82
600 Supplies				
610 General Supplies	16,114.65	16,330.33		32,444.98
630 Food	3,319.69	3,282.86		6,602.55
640 Books and Periodicals	42,212.04	38,617.55		80,829.59
650 Supplies & Fees – Technology Related	103,397.21	78,270.92		181,668.13
Total Supplies	\$165,043.59	\$136,501.66		\$301,545.25
700 Property				
736 Technology Equipment Lease	114,742.00	114,742.00		229,484.00
752 Capital Equipment – Original and Additional	40,014.93	23,375.10		63,390.03
756 Capitalized Technology Equipment – Original		298,339.30		298,339.30
Total Property	\$154,756.93	\$436,456.40		\$591,213.33
800 Other Objects				
810 Dues and Fees	2,994.66	2,753.76		5,748.42
Total Other Objects	\$2,994.66	\$2,753.76		\$5,748.42
Total 2200 Support Services – Instructional Staff	\$1,647,126.92	\$1,667,168.36	\$40,090.99	\$3,354,386.27

General Fund (10)

2210 Supervision of Educational Media Services

Elementary

Secondary

Federal

Total

100 Personnel Services – Salaries

100 Personnel Services – Salaries

46,927.05

46,927.05

Total Personnel Services – Salaries

\$46,927.05

\$46,927.05

200 Personnel Services – Employee Benefits

210 Group Insurance – Contracted Provider

7,849.97

7,849.97

220 Social Security Contributions

3,561.09

3,561.09

230 PSERS Retirement Contributions

15,786.15

15,786.15

260 Workers' Compensation

234.60

234.60

Total Personnel Services – Employee Benefits

\$27,431.81

\$27,431.81

Total 2210 Supervision of Educational Media Services

\$74,358.86

\$74,358.86

General Fund (10)

2211 Supervision of Educational Media Services – Head of Component

	<u>Elementary</u>	<u>Secondary</u>	<u>Federal</u>	<u>Total</u>
100 Personnel Services – Salaries				
100 Personnel Services – Salaries		46,927.05		46,927.05
Total Personnel Services – Salaries		\$46,927.05		\$46,927.05
200 Personnel Services – Employee Benefits				
210 Group Insurance – Contracted Provider		7,849.97		7,849.97
220 Social Security Contributions		3,561.09		3,561.09
230 PSERS Retirement Contributions		15,786.15		15,786.15
260 Workers' Compensation		234.60		234.60
Total Personnel Services – Employee Benefits		\$27,431.81		\$27,431.81
Total 2211 Supervision of Educational Media Services – Head of Component		\$74,358.86		\$74,358.86

General Fund (10)

2240 Computer-Assisted Instruction Support Services

	<u>Elementary</u>	<u>Secondary</u>	<u>Federal</u>	<u>Total</u>
100 Personnel Services – Salaries				
100 Personnel Services – Salaries	121,276.44	88,136.47		209,412.91
Total Personnel Services – Salaries	\$121,276.44	\$88,136.47		\$209,412.91
200 Personnel Services – Employee Benefits				
210 Group Insurance – Contracted Provider	24,314.67	15,266.54		39,581.21
220 Social Security Contributions	9,154.88	6,666.45		15,821.33
230 PSERS Retirement Contributions	37,576.81	26,484.09		64,060.90
260 Workers' Compensation	606.42	440.63		1,047.05
Total Personnel Services – Employee Benefits	\$71,652.78	\$48,857.71		\$120,510.49
300 Purchased Professional and Technical Services				
322 Professional Educational Services – Ius	650.00	650.00		1,300.00
340 Technical Services	5,777.93	5,777.91		11,555.84
Total Purchased Professional and Technical Services	\$6,427.93	\$6,427.91		\$12,855.84
400 Purchased Property Services				
430 Repairs and Maintenance Services	77,859.33	79,544.18		157,403.51
440 Rentals	77,814.53	34,647.89		112,462.42
Total Purchased Property Services	\$155,673.86	\$114,192.07		\$269,865.93
500 Other Purchased Services				
520 Insurance – General	3,946.00	3,946.00		7,892.00
580 Travel	4,785.35	5,036.66		9,822.01
Total Other Purchased Services	\$8,731.35	\$8,982.66		\$17,714.01
600 Supplies				
610 General Supplies	9,026.96	14,141.33		23,168.29
650 Supplies & Fees – Technology Related	83,989.09	55,771.49		139,760.58
Total Supplies	\$93,016.05	\$69,912.82		\$162,928.87
700 Property				
736 Technology Equipment Lease	114,742.00	114,742.00		229,484.00
752 Capital Equipment – Original and Additional	40,014.93	23,375.10		63,390.03
756 Capitalized Technology Equipment – Original		298,339.30		298,339.30
Total Property	\$154,756.93	\$436,456.40		\$591,213.33
800 Other Objects				
810 Dues and Fees	1,491.00	1,331.00		2,822.00
Total Other Objects	\$1,491.00	\$1,331.00		\$2,822.00
Total 2240 Computer-Assisted Instruction Support Services	\$613,026.34	\$774,297.04		\$1,387,323.38

General Fund (10)

2250 School Library Services

	<u>Elementary</u>	<u>Secondary</u>	<u>Federal</u>	<u>Total</u>
100 Personnel Services – Salaries				
100 Personnel Services – Salaries	305,466.26	170,591.00		476,057.26
Total Personnel Services – Salaries	\$305,466.26	\$170,591.00		\$476,057.26
200 Personnel Services – Employee Benefits				
210 Group Insurance – Contracted Provider	96,892.80	49,066.70		145,959.50
220 Social Security Contributions	20,968.96	12,245.23		33,214.19
230 PSERS Retirement Contributions	99,316.62	57,830.42		157,147.04
260 Workers' Compensation	1,471.51	853.03		2,324.54
Total Personnel Services – Employee Benefits	\$218,649.89	\$119,995.38		\$338,645.27
600 Supplies				
610 General Supplies	5,464.26	1,604.87		7,069.13
640 Books and Periodicals	35,469.50	34,253.15		69,722.65
Total Supplies	\$40,933.76	\$35,858.02		\$76,791.78
Total 2250 School Library Services	\$565,049.91	\$326,444.40		\$891,494.31

General Fund (10)

	<u>Elementary</u>	<u>Secondary</u>	<u>Federal</u>	<u>Total</u>
2260 Instruction and Curriculum Development Services				
100 Personnel Services – Salaries				
100 Personnel Services – Salaries	188,292.04	189,949.33		378,241.37
Total Personnel Services – Salaries	\$188,292.04	\$189,949.33		\$378,241.37
200 Personnel Services – Employee Benefits				
210 Group Insurance – Contracted Provider	19,478.02	46,896.21		66,374.23
220 Social Security Contributions	14,409.61	14,246.69		28,656.30
230 PSERS Retirement Contributions	63,263.04	64,392.84		127,655.88
260 Workers' Compensation	932.46	951.65		1,884.11
Total Personnel Services – Employee Benefits	\$98,083.13	\$126,487.39		\$224,570.52
300 Purchased Professional and Technical Services				
310 Official / Administrative Services	5,929.00	5,419.00		11,348.00
Total Purchased Professional and Technical Services	\$5,929.00	\$5,419.00		\$11,348.00
500 Other Purchased Services				
580 Travel	9,539.44	8,141.13		17,680.57
Total Other Purchased Services	\$9,539.44	\$8,141.13		\$17,680.57
600 Supplies				
610 General Supplies	1,623.43	584.13		2,207.56
630 Food	3,319.69	3,282.86		6,602.55
640 Books and Periodicals	6,405.49	4,027.35		10,432.84
650 Supplies & Fees – Technology Related	19,408.12	22,499.43		41,907.55
Total Supplies	\$30,756.73	\$30,393.77		\$61,150.50
800 Other Objects				
810 Dues and Fees	1,503.66	1,422.76		2,926.42
Total Other Objects	\$1,503.66	\$1,422.76		\$2,926.42
Total 2260 Instruction and Curriculum Development Services	\$334,104.00	\$361,813.38		\$695,917.38

General Fund (10)

2270 Instructional Staff Professional Development Services	<u>Elementary</u>	<u>Secondary</u>	<u>Federal</u>	<u>Total</u>
200 Personnel Services – Employee Benefits				
240 Tuition Reimbursement	71,088.45	68,084.55		139,173.00
Total Personnel Services – Employee Benefits	\$71,088.45	\$68,084.55		\$139,173.00
300 Purchased Professional and Technical Services				
310 Official / Administrative Services	46,321.50	45,961.51		92,283.01
360 Employee Training and Development Services	4,110.00		38,600.99	42,710.99
Total Purchased Professional and Technical Services	\$50,431.50	\$45,961.51	\$38,600.99	\$134,994.00
500 Other Purchased Services				
580 Travel	13,089.67	15,871.57	1,490.00	30,451.24
Total Other Purchased Services	\$13,089.67	\$15,871.57	\$1,490.00	\$30,451.24
600 Supplies				
640 Books and Periodicals	337.05	337.05		674.10
Total Supplies	\$337.05	\$337.05		\$674.10
Total 2270 Instructional Staff Professional Development Services	\$134,946.67	\$130,254.68	\$40,090.99	\$305,292.34

General Fund (10)

	<u>Elementary</u>	<u>Secondary</u>	<u>Federal</u>	<u>Total</u>
2300 Support Services – Administration				
100 Personnel Services – Salaries				
100 Personnel Services – Salaries	838,934.39	795,739.58		2,172,418.20
Total Personnel Services – Salaries	\$838,934.39	\$795,739.58		\$2,172,418.20
200 Personnel Services – Employee Benefits				
210 Group Insurance – Contracted Provider	161,631.57	188,852.75		417,726.63
220 Social Security Contributions	62,973.38	59,741.40		163,031.71
230 PSERS Retirement Contributions	283,737.88	265,766.23		687,432.77
260 Workers' Compensation	4,202.61	3,957.73		10,534.65
291 Other Retirement Plans				16,222.50
Total Personnel Services – Employee Benefits	\$512,545.44	\$518,318.11		\$1,294,948.26
300 Purchased Professional and Technical Services				
310 Official / Administrative Services				404,565.38
330 Other Professional Services				26,275.00
340 Technical Services				22,910.99
Total Purchased Professional and Technical Services				\$453,751.37
400 Purchased Property Services				
440 Rentals				(375.00)
Total Purchased Property Services				(\$375.00)
500 Other Purchased Services				
520 Insurance – General				73,025.75
530 Communications				61,600.10
549 Other Advertising/Public Relations				3,562.54
580 Travel	5,309.27	880.49		29,272.34
Total Other Purchased Services	\$5,309.27	\$880.49		\$167,460.73
600 Supplies				
610 General Supplies	6,610.13	6,194.54		26,931.80
630 Food	4,186.05	437.27		10,342.77
640 Books and Periodicals				6,517.90
650 Supplies & Fees – Technology Related				10,500.01
Total Supplies	\$10,796.18	\$6,631.81		\$54,292.48
800 Other Objects				
810 Dues and Fees	3,698.19	4,991.65		32,588.02
Total Other Objects	\$3,698.19	\$4,991.65		\$32,588.02
Total 2300 Support Services – Administration	\$1,371,283.47	\$1,326,561.64		\$4,175,084.06

General Fund (10)

2330 Tax Assessment and Collection Services	<u>Elementary</u>	<u>Secondary</u>	<u>Federal</u>	<u>Total</u>
100 Personnel Services – Salaries				
100 Personnel Services – Salaries				47,722.58
Total Personnel Services – Salaries				\$47,722.58
200 Personnel Services – Employee Benefits				
210 Group Insurance – Contracted Provider				12.82
220 Social Security Contributions				3,647.56
230 PSERS Retirement Contributions				6,380.99
260 Workers' Compensation				94.09
Total Personnel Services – Employee Benefits				\$10,135.46
300 Purchased Professional and Technical Services				
310 Official / Administrative Services				5,000.00
340 Technical Services				22,910.99
Total Purchased Professional and Technical Services				\$27,910.99
500 Other Purchased Services				
520 Insurance – General				6,471.75
530 Communications				37,080.39
Total Other Purchased Services				\$43,552.14
Total 2330 Tax Assessment and Collection Services				\$129,321.17

General Fund (10)

2350 Legal and Accounting Services

Elementary

Secondary

Federal

Total

300 Purchased Professional and Technical Services

310 Official / Administrative Services

349,201.20

330 Other Professional Services

26,250.00

Total Purchased Professional and Technical Services

\$375,451.20

Total 2350 Legal and Accounting Services

\$375,451.20

General Fund (10)

	<u>Elementary</u>	<u>Secondary</u>	<u>Federal</u>	<u>Total</u>
2360 Office of the Superintendent / Executive Director Services				
100 Personnel Services – Salaries				
100 Personnel Services – Salaries				490,021.65
Total Personnel Services – Salaries				\$490,021.65
200 Personnel Services – Employee Benefits				
210 Group Insurance – Contracted Provider				67,229.49
220 Social Security Contributions				36,669.37
230 PSERS Retirement Contributions				131,547.67
260 Workers' Compensation				2,280.22
291 Other Retirement Plans				16,222.50
Total Personnel Services – Employee Benefits				\$253,949.25
300 Purchased Professional and Technical Services				
310 Official / Administrative Services				49,614.18
Total Purchased Professional and Technical Services				\$49,614.18
500 Other Purchased Services				
580 Travel				21,056.10
Total Other Purchased Services				\$21,056.10
600 Supplies				
610 General Supplies				13,912.83
630 Food				5,719.45
640 Books and Periodicals				6,517.90
650 Supplies & Fees – Technology Related				0.01
Total Supplies				\$26,150.19
800 Other Objects				
810 Dues and Fees				23,898.18
Total Other Objects				\$23,898.18
Total 2360 Office of the Superintendent / Executive Director Services				\$864,689.55

General Fund (10)

	<u>Elementary</u>	<u>Secondary</u>	<u>Federal</u>	<u>Total</u>
2380 Office of the Principal Services				
100 Personnel Services – Salaries				
100 Personnel Services – Salaries	838,934.39	795,739.58		1,634,673.97
Total Personnel Services – Salaries	\$838,934.39	\$795,739.58		\$1,634,673.97
200 Personnel Services – Employee Benefits				
210 Group Insurance – Contracted Provider	161,631.57	188,852.75		350,484.32
220 Social Security Contributions	62,973.38	59,741.40		122,714.78
230 PSERS Retirement Contributions	283,737.88	265,766.23		549,504.11
260 Workers' Compensation	4,202.61	3,957.73		8,160.34
Total Personnel Services – Employee Benefits	\$512,545.44	\$518,318.11		\$1,030,863.55
500 Other Purchased Services				
580 Travel	5,309.27	880.49		6,189.76
Total Other Purchased Services	\$5,309.27	\$880.49		\$6,189.76
600 Supplies				
610 General Supplies	6,610.13	6,194.54		12,804.67
630 Food	4,186.05	437.27		4,623.32
Total Supplies	\$10,796.18	\$6,631.81		\$17,427.99
800 Other Objects				
810 Dues and Fees	3,698.19	4,991.65		8,689.84
Total Other Objects	\$3,698.19	\$4,991.65		\$8,689.84
Total 2380 Office of the Principal Services	\$1,371,283.47	\$1,326,561.64		\$2,697,845.11

General Fund (10)

2390 Other Administration Services

Elementary

Secondary

Federal

Total

400 Purchased Property Services

440 Rentals

(375.00)

Total Purchased Property Services

(\$375.00)

500 Other Purchased Services

530 Communications

24,519.71

549 Other Advertising/Public Relations

3,562.54

Total Other Purchased Services

\$28,082.25

Total 2390 Other Administration Services

\$27,707.25

General Fund (10)

	<u>Elementary</u>	<u>Secondary</u>	<u>Federal</u>	<u>Total</u>
2400 Support Services – Pupil Health				
100 Personnel Services – Salaries				
100 Personnel Services – Salaries				495,597.47
Total Personnel Services – Salaries				\$495,597.47
200 Personnel Services – Employee Benefits				
210 Group Insurance – Contracted Provider				133,947.01
220 Social Security Contributions				36,474.27
230 PSERS Retirement Contributions				161,020.69
260 Workers' Compensation				2,481.06
Total Personnel Services – Employee Benefits				\$333,923.03
300 Purchased Professional and Technical Services				
310 Official / Administrative Services				1,690.00
330 Other Professional Services				59,108.88
390 Other Purchased Professional and Technical Services				7,908.24
Total Purchased Professional and Technical Services				\$68,707.12
600 Supplies				
610 General Supplies				19,133.27
Total Supplies				\$19,133.27
Total 2400 Support Services – Pupil Health				\$917,360.89

General Fund (10)

2420 Medical Services

Elementary

Secondary

Federal

Total

300 Purchased Professional and Technical Services

310 Official / Administrative Services

1,690.00

390 Other Purchased Professional and Technical Services

7,908.24

Total Purchased Professional and Technical Services

\$9,598.24

Total 2420 Medical Services

\$9,598.24

General Fund (10)

2440 Nursing Services

	<u>Elementary</u>	<u>Secondary</u>	<u>Federal</u>	<u>Total</u>
100 Personnel Services – Salaries				
100 Personnel Services – Salaries				495,597.47
Total Personnel Services – Salaries				\$495,597.47
200 Personnel Services – Employee Benefits				
210 Group Insurance – Contracted Provider				133,947.01
220 Social Security Contributions				36,474.27
230 PSERS Retirement Contributions				161,020.69
260 Workers' Compensation				2,481.06
Total Personnel Services – Employee Benefits				\$333,923.03
300 Purchased Professional and Technical Services				
330 Other Professional Services				59,108.88
Total Purchased Professional and Technical Services				\$59,108.88
600 Supplies				
610 General Supplies				19,133.27
Total Supplies				\$19,133.27
Total 2440 Nursing Services				\$907,762.65

General Fund (10)

	<u>Elementary</u>	<u>Secondary</u>	<u>Federal</u>	<u>Total</u>
2500 Support Services – Business				
100 Personnel Services – Salaries				
100 Personnel Services – Salaries				534,724.23
Total Personnel Services – Salaries				\$534,724.23
200 Personnel Services – Employee Benefits				
210 Group Insurance – Contracted Provider				145,570.25
220 Social Security Contributions				39,905.87
230 PSERS Retirement Contributions				181,271.42
260 Workers' Compensation				2,673.52
Total Personnel Services – Employee Benefits				\$369,421.06
300 Purchased Professional and Technical Services				
340 Technical Services				24,867.68
Total Purchased Professional and Technical Services				\$24,867.68
400 Purchased Property Services				
410 Cleaning Services				1,886.28
430 Repairs and Maintenance Services				123,074.97
440 Rentals				12,258.42
Total Purchased Property Services				\$137,219.67
500 Other Purchased Services				
580 Travel				4,180.97
Total Other Purchased Services				\$4,180.97
600 Supplies				
610 General Supplies				48,355.29
Total Supplies				\$48,355.29
700 Property				
736 Technology Equipment Lease				134,379.00
Total Property				\$134,379.00
800 Other Objects				
810 Dues and Fees				33,752.97
Total Other Objects				\$33,752.97
Total 2500 Support Services – Business				\$1,286,900.87

General Fund (10)

	<u>Elementary</u>	<u>Secondary</u>	<u>Federal</u>	<u>Total</u>
2510 Fiscal Services				
100 Personnel Services – Salaries				
100 Personnel Services – Salaries				347,897.20
Total Personnel Services – Salaries				\$347,897.20
200 Personnel Services – Employee Benefits				
210 Group Insurance – Contracted Provider				74,977.89
220 Social Security Contributions				25,967.02
230 PSERS Retirement Contributions				117,937.07
260 Workers' Compensation				1,739.37
Total Personnel Services – Employee Benefits				\$220,621.35
300 Purchased Professional and Technical Services				
340 Technical Services				24,867.68
Total Purchased Professional and Technical Services				\$24,867.68
400 Purchased Property Services				
410 Cleaning Services				1,886.28
Total Purchased Property Services				\$1,886.28
500 Other Purchased Services				
580 Travel				4,180.97
Total Other Purchased Services				\$4,180.97
600 Supplies				
610 General Supplies				4,591.18
Total Supplies				\$4,591.18
800 Other Objects				
810 Dues and Fees				6,024.99
Total Other Objects				\$6,024.99
Total 2510 Fiscal Services				\$610,069.65

General Fund (10)

	<u>Elementary</u>	<u>Secondary</u>	<u>Federal</u>	<u>Total</u>
2511 Supervision of Fiscal Services - Head of Component				
100 <u>Personnel Services – Salaries</u>				
100 Personnel Services – Salaries				127,720.00
Total Personnel Services – Salaries				\$127,720.00
200 <u>Personnel Services – Employee Benefits</u>				
210 Group Insurance – Contracted Provider				29,746.04
220 Social Security Contributions				9,526.29
230 PSERS Retirement Contributions				43,297.00
260 Workers' Compensation				638.56
Total Personnel Services – Employee Benefits				\$83,207.89
500 <u>Other Purchased Services</u>				
580 Travel				4,180.97
Total Other Purchased Services				\$4,180.97
800 <u>Other Objects</u>				
810 Dues and Fees				6,024.99
Total Other Objects				\$6,024.99
Total 2511 Supervision of Fiscal Services - Head of Component				\$221,133.85

General Fund (10)

2513 Receiving and Disbursing Funds Services

Elementary

Secondary

Federal

Total

100 Personnel Services – Salaries

100 Personnel Services – Salaries

88,048.38

Total Personnel Services – Salaries

\$88,048.38

200 Personnel Services – Employee Benefits

210 Group Insurance – Contracted Provider

25,880.20

220 Social Security Contributions

6,484.17

230 PSERS Retirement Contributions

29,848.43

260 Workers' Compensation

440.18

Total Personnel Services – Employee Benefits

\$62,652.98

Total 2513 Receiving and Disbursing Funds Services

\$150,701.36

General Fund (10)

2514 Payroll Services

Elementary

Secondary

Federal

Total

100 Personnel Services – Salaries

100 Personnel Services – Salaries

62,474.42

Total Personnel Services – Salaries

\$62,474.42

200 Personnel Services – Employee Benefits

210 Group Insurance – Contracted Provider

10,436.60

220 Social Security Contributions

4,694.01

230 PSERS Retirement Contributions

21,178.79

260 Workers' Compensation

312.35

Total Personnel Services – Employee Benefits

\$36,621.75

Total 2514 Payroll Services

\$99,096.17

General Fund (10)

	<u>Elementary</u>	<u>Secondary</u>	<u>Federal</u>	<u>Total</u>
2515 Financial Accounting Services				
100 Personnel Services – Salaries				
100 Personnel Services – Salaries				69,654.40
Total Personnel Services – Salaries				\$69,654.40
200 Personnel Services – Employee Benefits				
210 Group Insurance – Contracted Provider				8,915.05
220 Social Security Contributions				5,262.55
230 PSERS Retirement Contributions				23,612.85
260 Workers' Compensation				348.28
Total Personnel Services – Employee Benefits				\$38,138.73
300 Purchased Professional and Technical Services				
340 Technical Services				24,867.68
Total Purchased Professional and Technical Services				\$24,867.68
400 Purchased Property Services				
410 Cleaning Services				1,886.28
Total Purchased Property Services				\$1,886.28
600 Supplies				
610 General Supplies				4,591.18
Total Supplies				\$4,591.18
Total 2515 Financial Accounting Services				\$139,138.27

General Fund (10)

2530 Warehousing and Distributing Services

Elementary

Secondary

Federal

Total

100 Personnel Services – Salaries

100 Personnel Services – Salaries

81,856.10

Total Personnel Services – Salaries

\$81,856.10

200 Personnel Services – Employee Benefits

210 Group Insurance – Contracted Provider

36,747.54

220 Social Security Contributions

6,063.58

230 PSERS Retirement Contributions

27,749.27

260 Workers' Compensation

409.31

Total Personnel Services – Employee Benefits

\$70,969.70

Total 2530 Warehousing and Distributing Services

\$152,825.80

General Fund (10)

	<u>Elementary</u>	<u>Secondary</u>	<u>Federal</u>	<u>Total</u>
2540 Printing, Publishing and Duplicating Services				
100 Personnel Services – Salaries				
100 Personnel Services – Salaries				104,970.93
Total Personnel Services – Salaries				\$104,970.93
200 Personnel Services – Employee Benefits				
210 Group Insurance – Contracted Provider				33,844.82
220 Social Security Contributions				7,875.27
230 PSERS Retirement Contributions				35,585.08
260 Workers' Compensation				524.84
Total Personnel Services – Employee Benefits				\$77,830.01
400 Purchased Property Services				
430 Repairs and Maintenance Services				69,782.78
440 Rentals				3,268.18
Total Purchased Property Services				\$73,050.96
600 Supplies				
610 General Supplies				43,764.11
Total Supplies				\$43,764.11
700 Property				
736 Technology Equipment Lease				67,189.50
Total Property				\$67,189.50
Total 2540 Printing, Publishing and Duplicating Services				\$366,805.51

General Fund (10)

	<u>Elementary</u>	<u>Secondary</u>	<u>Federal</u>	<u>Total</u>
2590 Other Support Services – Business				
400 <u>Purchased Property Services</u>				
430 Repairs and Maintenance Services				53,292.19
440 Rentals				8,990.24
Total Purchased Property Services				\$62,282.43
700 <u>Property</u>				
736 Technology Equipment Lease				67,189.50
Total Property				\$67,189.50
800 <u>Other Objects</u>				
810 Dues and Fees				27,727.98
Total Other Objects				\$27,727.98
Total 2590 Other Support Services – Business				\$157,199.91

General Fund (10)

	<u>Elementary</u>	<u>Secondary</u>	<u>Federal</u>	<u>Total</u>
2600 Operation and Maintenance of Plant Services				
100 Personnel Services – Salaries				
100 Personnel Services – Salaries				2,540,069.46
Total Personnel Services – Salaries				\$2,540,069.46
200 Personnel Services – Employee Benefits				
210 Group Insurance – Contracted Provider				591,219.60
220 Social Security Contributions				192,342.00
230 PSERS Retirement Contributions				839,305.04
260 Workers' Compensation				12,704.19
Total Personnel Services – Employee Benefits				\$1,635,570.83
300 Purchased Professional and Technical Services				
322 Professional Educational Services – Ius				6,000.00
330 Other Professional Services				432.00
350 Security / Safety Services				3,912.00
Total Purchased Professional and Technical Services				\$10,344.00
400 Purchased Property Services				
410 Cleaning Services				44,813.92
420 Utility Services				158,415.81
430 Repairs and Maintenance Services				204,528.31
440 Rentals				19,812.23
460 Extermination Services				11,708.64
Total Purchased Property Services				\$439,278.91
500 Other Purchased Services				
523 General Property and Liability Insurance				258,309.00
530 Communications				183,752.30
580 Travel				1,472.73
Total Other Purchased Services				\$443,534.03
600 Supplies				
610 General Supplies	530,562.98	198,628.91		729,191.89
620 Energy				821,876.59
630 Food				788.03
650 Supplies & Fees – Technology Related				26,986.31
Total Supplies	\$530,562.98	\$198,628.91		\$1,578,842.82
700 Property				
752 Capital Equipment – Original and Additional				17,166.10
756 Capitalized Technology Equipment – Original				2,270.00
Total Property				\$19,436.10
800 Other Objects				
810 Dues and Fees				2,330.84
Total Other Objects				\$2,330.84
Total 2600 Operation and Maintenance of Plant Services	\$530,562.98	\$198,628.91		\$6,669,406.99

General Fund (10)

	<u>Elementary</u>	<u>Secondary</u>	<u>Federal</u>	<u>Total</u>
2610 Supervision of Operation and Maintenance of Plant Services				
100 <u>Personnel Services – Salaries</u>				
100 Personnel Services – Salaries				331,900.54
Total Personnel Services – Salaries				\$331,900.54
200 <u>Personnel Services – Employee Benefits</u>				
210 Group Insurance – Contracted Provider				73,792.63
220 Social Security Contributions				24,911.21
230 PSERS Retirement Contributions				109,124.41
260 Workers' Compensation				1,609.52
Total Personnel Services – Employee Benefits				\$209,437.77
500 <u>Other Purchased Services</u>				
580 Travel				365.70
Total Other Purchased Services				\$365.70
800 <u>Other Objects</u>				
810 Dues and Fees				1,701.84
Total Other Objects				\$1,701.84
Total 2610 Supervision of Operation and Maintenance of Plant Services				\$543,405.85

General Fund (10)

2611 Supervision of Operation and Maintenance of Plant Services – Head of Component	<u>Elementary</u>	<u>Secondary</u>	<u>Federal</u>	<u>Total</u>
100 Personnel Services – Salaries				
100 Personnel Services – Salaries				331,900.54
Total Personnel Services – Salaries				\$331,900.54
200 Personnel Services – Employee Benefits				
210 Group Insurance – Contracted Provider				73,792.63
220 Social Security Contributions				24,911.21
230 PSERS Retirement Contributions				109,124.41
260 Workers' Compensation				1,609.52
Total Personnel Services – Employee Benefits				\$209,437.77
500 Other Purchased Services				
580 Travel				365.70
Total Other Purchased Services				\$365.70
800 Other Objects				
810 Dues and Fees				1,701.84
Total Other Objects				\$1,701.84
Total 2611 Supervision of Operation and Maintenance of Plant Services – Head of Component				\$543,405.85

General Fund (10)

	<u>Elementary</u>	<u>Secondary</u>	<u>Federal</u>	<u>Total</u>
2620 Operation of Buildings Services				
100 Personnel Services – Salaries				
100 Personnel Services – Salaries				2,014,519.40
Total Personnel Services – Salaries				\$2,014,519.40
200 Personnel Services – Employee Benefits				
210 Group Insurance – Contracted Provider				492,783.21
220 Social Security Contributions				152,686.49
230 PSERS Retirement Contributions				664,533.61
260 Workers' Compensation				10,122.92
Total Personnel Services – Employee Benefits				\$1,320,126.23
300 Purchased Professional and Technical Services				
330 Other Professional Services				432.00
Total Purchased Professional and Technical Services				\$432.00
400 Purchased Property Services				
410 Cleaning Services				44,813.92
420 Utility Services				158,415.81
430 Repairs and Maintenance Services				147,125.15
440 Rentals				19,812.23
460 Extermination Services				11,708.64
Total Purchased Property Services				\$381,875.75
500 Other Purchased Services				
523 General Property and Liability Insurance				258,309.00
530 Communications				183,752.30
Total Other Purchased Services				\$442,061.30
600 Supplies				
610 General Supplies	470,622.92	141,221.66		611,844.58
620 Energy				821,876.59
630 Food				788.03
650 Supplies & Fees – Technology Related				18,774.71
Total Supplies	\$470,622.92	\$141,221.66		\$1,453,283.91
700 Property				
752 Capital Equipment – Original and Additional				27,166.10
Total Property				\$27,166.10
800 Other Objects				
810 Dues and Fees				629.00
Total Other Objects				\$629.00
Total 2620 Operation of Buildings Services	\$470,622.92	\$141,221.66		\$5,640,093.69

General Fund (10)

	<u>Elementary</u>	<u>Secondary</u>	<u>Federal</u>	<u>Total</u>
2630 Care and Upkeep of Grounds Services				
100 Personnel Services – Salaries				
100 Personnel Services – Salaries				41,164.86
Total Personnel Services – Salaries				\$41,164.86
200 Personnel Services – Employee Benefits				
210 Group Insurance – Contracted Provider				10,475.58
220 Social Security Contributions				3,103.64
230 PSERS Retirement Contributions				13,954.87
260 Workers' Compensation				205.48
Total Personnel Services – Employee Benefits				\$27,739.57
400 Purchased Property Services				
430 Repairs and Maintenance Services				39,886.06
Total Purchased Property Services				\$39,886.06
600 Supplies				
610 General Supplies	25,738.01	24,650.43		50,388.44
Total Supplies	\$25,738.01	\$24,650.43		\$50,388.44
Total 2630 Care and Upkeep of Grounds Services	\$25,738.01	\$24,650.43		\$159,178.93

General Fund (10)

	<u>Elementary</u>	<u>Secondary</u>	<u>Federal</u>	<u>Total</u>
2640 Care and Upkeep of Equipment Services				
400 <u>Purchased Property Services</u>				
430 Repairs and Maintenance Services				5,041.96
Total Purchased Property Services				\$5,041.96
600 <u>Supplies</u>				
610 General Supplies	5,390.26	5,162.50		10,552.76
Total Supplies	\$5,390.26	\$5,162.50		\$10,552.76
Total 2640 Care and Upkeep of Equipment Services	\$5,390.26	\$5,162.50		\$15,594.72

General Fund (10)

	<u>Elementary</u>	<u>Secondary</u>	<u>Federal</u>	<u>Total</u>
2650 Vehicle Operation and Maintenance Services (Other Than Student Transportation Vehicles)				
400 <u>Purchased Property Services</u>				
430 Repairs and Maintenance Services				12,475.14
Total Purchased Property Services				\$12,475.14
600 <u>Supplies</u>				
610 General Supplies	1,074.73	1,029.32		2,104.05
Total Supplies	\$1,074.73	\$1,029.32		\$2,104.05
Total 2650 Vehicle Operation and Maintenance Services (Other Than Student Transportation Vehicles)	\$1,074.73	\$1,029.32		\$14,579.19

General Fund (10)

2660 Safety and Security Services

100 Personnel Services – Salaries

	<u>Elementary</u>	<u>Secondary</u>	<u>Federal</u>	<u>Total</u>
100 Personnel Services – Salaries				152,484.66
Total Personnel Services – Salaries				\$152,484.66

200 Personnel Services – Employee Benefits

210 Group Insurance – Contracted Provider				14,168.18
220 Social Security Contributions				11,640.66
230 PSERS Retirement Contributions				51,692.15
260 Workers' Compensation				766.27
Total Personnel Services – Employee Benefits				\$78,267.26

300 Purchased Professional and Technical Services

322 Professional Educational Services – Ius				6,000.00
350 Security / Safety Services				3,912.00
Total Purchased Professional and Technical Services				\$9,912.00

500 Other Purchased Services

580 Travel				1,107.03
Total Other Purchased Services				\$1,107.03

600 Supplies

610 General Supplies	27,737.06	26,565.00		54,302.06
650 Supplies & Fees – Technology Related				8,211.60
Total Supplies	\$27,737.06	\$26,565.00		\$62,513.66

700 Property

756 Capitalized Technology Equipment – Original				2,270.00
Total Property				\$2,270.00

Total 2660 Safety and Security Services

	\$27,737.06	\$26,565.00		\$306,554.61
--	--------------------	--------------------	--	---------------------

LEA : 114063003 Governor Mifflin SD

Printed 12/17/2025 8:49:22 AM

General Fund (10)

2690 Other Operation and Maintenance of Plant Services

Elementary

Secondary

Federal

Total

700 Property

752 Capital Equipment – Original and Additional

(10,000.00)

Total Property

(\$10,000.00)

Total 2690 Other Operation and Maintenance of Plant Services

(\$10,000.00)

General Fund (10)

	<u>Elementary</u>	<u>Secondary</u>	<u>Federal</u>	<u>Total</u>
2700 Student Transportation Services				
100 Personnel Services – Salaries				
100 Personnel Services – Salaries				18,686.20
Total Personnel Services – Salaries				\$18,686.20
200 Personnel Services – Employee Benefits				
210 Group Insurance – Contracted Provider				12.87
220 Social Security Contributions				1,426.38
230 PSERS Retirement Contributions				6,334.60
260 Workers' Compensation				93.43
Total Personnel Services – Employee Benefits				\$7,867.28
400 Purchased Property Services				
430 Repairs and Maintenance Services				8,600.00
Total Purchased Property Services				\$8,600.00
500 Other Purchased Services				
513 Contracted Carriers				4,097,797.84
516 Student Transportation Services From the IU				88,250.80
Total Other Purchased Services				\$4,186,048.64
600 Supplies				
610 General Supplies				594.99
Total Supplies				\$594.99
800 Other Objects				
810 Dues and Fees				71,020.00
Total Other Objects				\$71,020.00
Total 2700 Student Transportation Services				\$4,292,817.11

General Fund (10)

2720 Vehicle Operation Services

Elementary Secondary Federal Total

100	<u>Personnel Services – Salaries</u>				
	100 Personnel Services – Salaries				18,686.20
	Total Personnel Services – Salaries				\$18,686.20
200	<u>Personnel Services – Employee Benefits</u>				
	210 Group Insurance – Contracted Provider				12.87
	220 Social Security Contributions				1,426.38
	230 PSERS Retirement Contributions				6,334.60
	260 Workers' Compensation				93.43
	Total Personnel Services – Employee Benefits				\$7,867.28
400	<u>Purchased Property Services</u>				
	430 Repairs and Maintenance Services				8,600.00
	Total Purchased Property Services				\$8,600.00
500	<u>Other Purchased Services</u>				
	513 Contracted Carriers				3,913,972.89
	516 Student Transportation Services From the IU				88,250.80
	Total Other Purchased Services				\$4,002,223.69
600	<u>Supplies</u>				
	610 General Supplies				594.99
	Total Supplies				\$594.99
800	<u>Other Objects</u>				
	810 Dues and Fees				71,020.00
	Total Other Objects				\$71,020.00
	Total 2720 Vehicle Operation Services				\$4,108,992.16

General Fund (10)

2750 Nonpublic Transportation

Elementary

Secondary

Federal

Total

500 Other Purchased Services

513 Contracted Carriers

183,824.95

Total Other Purchased Services

\$183,824.95

Total 2750 Nonpublic Transportation

\$183,824.95

General Fund (10)

2800 Support Services – Central

Elementary Secondary Federal Total

100 Personnel Services – Salaries

100 Personnel Services – Salaries 723,594.22

Total Personnel Services – Salaries \$723,594.22

200 Personnel Services – Employee Benefits

210 Group Insurance – Contracted Provider 143,556.16

220 Social Security Contributions 54,100.49

230 PSERS Retirement Contributions 242,114.41

240 Tuition Reimbursement 42,785.00

260 Workers' Compensation 3,621.10

Total Personnel Services – Employee Benefits \$486,177.16

300 Purchased Professional and Technical Services

310 Official / Administrative Services 31,920.49

329 Professional Educational Services – Other 447,259.17

330 Other Professional Services 668.20

360 Employee Training and Development Services 12,376.88

Total Purchased Professional and Technical Services \$492,224.74

500 Other Purchased Services

549 Other Advertising/Public Relations 7,259.19

580 Travel 2,536.77

Total Other Purchased Services \$9,795.96

600 Supplies

610 General Supplies 14,997.66

630 Food 252.10

650 Supplies & Fees – Technology Related 44,939.54

Total Supplies \$60,189.30

800 Other Objects

810 Dues and Fees 12,657.62

890 Miscellaneous Expenditures 1,600.65

Total Other Objects \$14,258.27

Total 2800 Support Services – Central \$1,786,239.65

General Fund (10)

2810 Planning, Research, Development and Evaluation Services

Elementary

Secondary

Federal

Total

100 Personnel Services – Salaries

100 Personnel Services – Salaries

317,378.09

Total Personnel Services – Salaries

\$317,378.09

200 Personnel Services – Employee Benefits

210 Group Insurance – Contracted Provider

42,874.10

220 Social Security Contributions

24,048.58

230 PSERS Retirement Contributions

106,386.29

260 Workers' Compensation

1,590.07

Total Personnel Services – Employee Benefits

\$174,899.04

Total 2810 Planning, Research, Development and Evaluation Services

\$492,277.13

General Fund (10)

2820 Information Services

Elementary

Secondary

Federal

Total

100 Personnel Services – Salaries

100 Personnel Services – Salaries

115,467.52

Total Personnel Services – Salaries

\$115,467.52

200 Personnel Services – Employee Benefits

210 Group Insurance – Contracted Provider

24,317.32

220 Social Security Contributions

8,680.79

230 PSERS Retirement Contributions

39,143.39

260 Workers' Compensation

577.31

Total Personnel Services – Employee Benefits

\$72,718.81

600 Supplies

610 General Supplies

2,439.06

650 Supplies & Fees – Technology Related

6,480.06

Total Supplies

\$8,919.12

800 Other Objects

810 Dues and Fees

914.84

Total Other Objects

\$914.84

Total 2820 Information Services

\$198,020.29

General Fund (10)

2823 Public Information Services

Elementary

Secondary

Federal

Total

100 Personnel Services – Salaries

100 Personnel Services – Salaries

115,467.52

Total Personnel Services – Salaries

\$115,467.52

200 Personnel Services – Employee Benefits

210 Group Insurance – Contracted Provider

24,317.32

220 Social Security Contributions

8,680.79

230 PSERS Retirement Contributions

39,143.39

260 Workers' Compensation

577.31

Total Personnel Services – Employee Benefits

\$72,718.81

600 Supplies

610 General Supplies

2,439.06

650 Supplies & Fees – Technology Related

6,480.06

Total Supplies

\$8,919.12

800 Other Objects

810 Dues and Fees

914.84

Total Other Objects

\$914.84

Total 2823 Public Information Services

\$198,020.29

General Fund (10)

2830 Staff Services

	<u>Elementary</u>	<u>Secondary</u>	<u>Federal</u>	<u>Total</u>
100 Personnel Services – Salaries				
100 Personnel Services – Salaries				290,748.61
Total Personnel Services – Salaries				\$290,748.61
200 Personnel Services – Employee Benefits				
210 Group Insurance – Contracted Provider				76,364.74
220 Social Security Contributions				21,371.12
230 PSERS Retirement Contributions				96,584.73
240 Tuition Reimbursement				42,785.00
260 Workers' Compensation				1,453.72
Total Personnel Services – Employee Benefits				\$238,559.31
300 Purchased Professional and Technical Services				
310 Official / Administrative Services				31,920.49
329 Professional Educational Services – Other				447,259.17
330 Other Professional Services				668.20
360 Employee Training and Development Services				12,376.88
Total Purchased Professional and Technical Services				\$492,224.74
500 Other Purchased Services				
549 Other Advertising/Public Relations				7,259.19
580 Travel				2,536.77
Total Other Purchased Services				\$9,795.96
600 Supplies				
610 General Supplies				12,558.60
630 Food				252.10
650 Supplies & Fees – Technology Related				38,459.48
Total Supplies				\$51,270.18
800 Other Objects				
810 Dues and Fees				11,742.78
890 Miscellaneous Expenditures				1,600.65
Total Other Objects				\$13,343.43
Total 2830 Staff Services				\$1,095,942.23

General Fund (10)

	<u>Elementary</u>	<u>Secondary</u>	<u>Federal</u>	<u>Total</u>
2831 Supervision of Staff Services				
100 Personnel Services – Salaries				
100 Personnel Services – Salaries				263,529.06
Total Personnel Services – Salaries				\$263,529.06
200 Personnel Services – Employee Benefits				
210 Group Insurance – Contracted Provider				70,974.32
220 Social Security Contributions				19,315.20
230 PSERS Retirement Contributions				89,099.08
260 Workers' Compensation				1,317.63
Total Personnel Services – Employee Benefits				\$180,706.23
500 Other Purchased Services				
580 Travel				2,190.94
Total Other Purchased Services				\$2,190.94
800 Other Objects				
810 Dues and Fees				2,202.84
Total Other Objects				\$2,202.84
Total 2831 Supervision of Staff Services				\$448,629.07

General Fund (10)

2832 Recruitment and Placement Services

Elementary

Secondary

Federal

Total

300 Purchased Professional and Technical Services

329 Professional Educational Services – Other

447,259.17

Total Purchased Professional and Technical Services

\$447,259.17

500 Other Purchased Services

549 Other Advertising/Public Relations

7,259.19

Total Other Purchased Services

\$7,259.19

600 Supplies

610 General Supplies

1,084.00

630 Food

252.10

650 Supplies & Fees – Technology Related

29,100.00

Total Supplies

\$30,436.10

800 Other Objects

810 Dues and Fees

9,539.94

Total Other Objects

\$9,539.94

Total 2832 Recruitment and Placement Services

\$494,494.40

General Fund (10)

2833 Staff Accounting Services

	<u>Elementary</u>	<u>Secondary</u>	<u>Federal</u>	<u>Total</u>
100 Personnel Services – Salaries				
100 Personnel Services – Salaries				27,219.55
Total Personnel Services – Salaries				\$27,219.55
200 Personnel Services – Employee Benefits				
210 Group Insurance – Contracted Provider				5,390.42
220 Social Security Contributions				2,055.92
230 PSERS Retirement Contributions				7,485.65
260 Workers' Compensation				136.09
Total Personnel Services – Employee Benefits				\$15,068.08
300 Purchased Professional and Technical Services				
310 Official / Administrative Services				31,920.49
Total Purchased Professional and Technical Services				\$31,920.49
600 Supplies				
610 General Supplies				11,319.18
650 Supplies & Fees – Technology Related				9,359.48
Total Supplies				\$20,678.66
800 Other Objects				
890 Miscellaneous Expenditures				1,600.65
Total Other Objects				\$1,600.65
Total 2833 Staff Accounting Services				\$96,487.43

General Fund (10)

2836 Staff Development Services – Non-Instructional, Non-Certified Staff Only

Elementary

Secondary

Federal

Total

200 Personnel Services – Employee Benefits

240 Tuition Reimbursement

42,785.00

Total Personnel Services – Employee Benefits

\$42,785.00

300 Purchased Professional and Technical Services

360 Employee Training and Development Services

12,376.88

Total Purchased Professional and Technical Services

\$12,376.88

500 Other Purchased Services

580 Travel

345.83

Total Other Purchased Services

\$345.83

Total 2836 Staff Development Services – Non-Instructional, Non-Certified Staff Only

\$55,507.71

General Fund (10)

2839 Other Staff Services

Elementary

Secondary

Federal

Total

300 Purchased Professional and Technical Services

330 Other Professional Services

668.20

Total Purchased Professional and Technical Services

\$668.20

600 Supplies

610 General Supplies

155.42

Total Supplies

\$155.42

Total 2839 Other Staff Services

\$823.62

General Fund (10)

2900 Other Support Services

Elementary

Secondary

Federal

Total

500 Other Purchased Services

595 IU Payments By Withholding

53,677.57

Total Other Purchased Services

\$53,677.57

Total 2900 Other Support Services

\$53,677.57

General Fund (10)

2910 Support Services Not Listed Elsewhere In the 2000 Series

Elementary

Secondary

Federal

Total

500 Other Purchased Services

595 IU Payments By Withholding

53,677.57

Total Other Purchased Services

\$53,677.57

Total 2910 Support Services Not Listed Elsewhere In the 2000 Series

\$53,677.57

General Fund (10)

3000 Operation of Non-Instructional Services

Total

100 Personnel Services – Salaries

100 Personnel Services – Salaries	54,945.72
110 Official / Administrative Salaries	235,478.37
120 Professional – Educational	142,519.20
130 Professional – Other	709,747.76
150 Office / Clerical	17,776.77
180 Service Work	26,266.75

Total Personnel Services – Salaries \$1,186,734.57

200 Personnel Services – Employee Benefits

210 Group Insurance – Contracted Provider	67,365.60
220 Social Security Contributions	88,809.36
230 PSERS Retirement Contributions	280,796.37
260 Workers’ Compensation	5,768.47

Total Personnel Services – Employee Benefits \$442,739.80

300 Purchased Professional and Technical Services

310 Official / Administrative Services	10,100.00
329 Professional Educational Services – Other	8,988.75
330 Other Professional Services	67,813.74
350 Security / Safety Services	15,018.56

Total Purchased Professional and Technical Services \$101,921.05

500 Other Purchased Services

510 Student Transportation Services	86,373.68
520 Insurance – General	11,386.50
580 Travel	14,117.83

Total Other Purchased Services \$111,878.01

600 Supplies

610 General Supplies	119,182.80
----------------------	------------

Total Supplies \$119,182.80

800 Other Objects

810 Dues and Fees	37,100.44
890 Miscellaneous Expenditures	86,693.00

Total Other Objects \$123,793.44

Total 3000 Operation of Non-Instructional Services \$2,086,249.67

General Fund (10)

3200 Student Activities

	<u>Elementary</u>	<u>Secondary</u>	<u>Federal</u>	<u>Total</u>
100 Personnel Services – Salaries				
110 Official / Administrative Salaries				235,478.37
120 Professional – Educational				142,519.20
130 Professional – Other				709,747.76
150 Office / Clerical				17,776.77
180 Service Work				26,266.75
Total Personnel Services – Salaries				\$1,131,788.85
200 Personnel Services – Employee Benefits				
210 Group Insurance – Contracted Provider				63,418.76
220 Social Security Contributions				83,696.29
230 PSERS Retirement Contributions				265,198.94
260 Workers’ Compensation				5,493.84
Total Personnel Services – Employee Benefits				\$417,807.83
300 Purchased Professional and Technical Services				
310 Official / Administrative Services				10,100.00
329 Professional Educational Services – Other				8,988.75
330 Other Professional Services				67,813.74
350 Security / Safety Services				15,018.56
Total Purchased Professional and Technical Services				\$101,921.05
500 Other Purchased Services				
510 Student Transportation Services				86,373.68
520 Insurance – General				11,386.50
580 Travel				14,117.83
Total Other Purchased Services				\$111,878.01
600 Supplies				
610 General Supplies				108,782.85
Total Supplies				\$108,782.85
800 Other Objects				
810 Dues and Fees				37,100.44
890 Miscellaneous Expenditures				245.00
Total Other Objects				\$37,345.44
Total 3200 Student Activities				\$1,909,524.03

General Fund (10)

3300 Community Services

100 Personnel Services – Salaries

	<u>Elementary</u>	<u>Secondary</u>	<u>Federal</u>	<u>Total</u>
100 Personnel Services – Salaries				54,945.72
Total Personnel Services – Salaries				\$54,945.72

200 Personnel Services – Employee Benefits

210 Group Insurance – Contracted Provider				3,946.84
220 Social Security Contributions				5,113.07
230 PSERS Retirement Contributions				15,597.43
260 Workers' Compensation				274.63
Total Personnel Services – Employee Benefits				\$24,931.97

600 Supplies

610 General Supplies			10,399.95	10,399.95
Total Supplies			\$10,399.95	\$10,399.95

800 Other Objects

890 Miscellaneous Expenditures				86,448.00
Total Other Objects				\$86,448.00

Total 3300 Community Services

			\$10,399.95	\$176,725.64
--	--	--	--------------------	---------------------

General Fund (10)

4000 Facilities Acquisition, Construction and Improvement Services

Total

400 Purchased Property Services

450 Construction Services

174,831.00

490 Other Purchased Property Services

3,749.71

Total Purchased Property Services

\$178,580.71

Total 4000 Facilities Acquisition, Construction and Improvement Services

\$178,580.71

General Fund (10)

	<u>Elementary</u>	<u>Secondary</u>	<u>Federal</u>	<u>Total</u>
4200 Existing Site Improvement Services				
400 <u>Purchased Property Services</u>				
490 Other Purchased Property Services				3,749.71
Total Purchased Property Services				\$3,749.71
Total 4200 Existing Site Improvement Services				\$3,749.71

LEA : 114063003 Governor Mifflin SD

Printed 12/17/2025 8:49:49 AM

General Fund (10)

	<u>Elementary</u>	<u>Secondary</u>	<u>Federal</u>	<u>Total</u>
4600 Existing Building Improvement Services				
400 <u>Purchased Property Services</u>				
450 Construction Services				174,831.00
Total Purchased Property Services				\$174,831.00
Total 4600 Existing Building Improvement Services				\$174,831.00

General Fund (10)

5000 Other Expenditures and Financing Uses

Total

800 Other Objects

830 Interest 54,673.00

Total Other Objects \$54,673.00

900 Other Uses of Funds

910 Redemption of Principal 581,832.13

939 Other Fund Transfers 6,063,304.01

Total Other Uses of Funds \$6,645,136.14

Total 5000 Other Expenditures and Financing Uses \$6,699,809.14

General Fund (10)

	<u>Elementary</u>	<u>Secondary</u>	<u>Federal</u>	<u>Total</u>
5100 Debt Service / Other Expenditures and Financing Uses				
800 Other Objects				
830 Interest				54,673.00
Total Other Objects				\$54,673.00
900 Other Uses of Funds				
910 Redemption of Principal				581,832.13
Total Other Uses of Funds				\$581,832.13
Total 5100 Debt Service / Other Expenditures and Financing Uses				\$636,505.13

General Fund (10)

5110 Debt Service

Elementary

Secondary

Federal

Total

900 Other Uses of Funds

910 Redemption of Principal

79,579.13

Total Other Uses of Funds

\$79,579.13

Total 5110 Debt Service

\$79,579.13

General Fund (10)

5140 Leases and Other Right-to-Use Arrangements

Elementary

Secondary

Federal

Total

800 Other Objects

830 Interest

54,673.00

Total Other Objects

\$54,673.00

900 Other Uses of Funds

910 Redemption of Principal

502,253.00

Total Other Uses of Funds

\$502,253.00

Total 5140 Leases and Other Right-to-Use Arrangements

\$556,926.00

General Fund (10)

	<u>Elementary</u>	<u>Secondary</u>	<u>Federal</u>	<u>Total</u>
5200 Interfund Transfers – Out				
900 <u>Other Uses of Funds</u>				
939 Other Fund Transfers				6,063,304.01
Total Other Uses of Funds				\$6,063,304.01
Total 5200 Interfund Transfers – Out				\$6,063,304.01

General Fund (10)

5240 Debt Service Fund Transfers

Elementary

Secondary

Federal

Total

900 Other Uses of Funds

939 Other Fund Transfers

6,063,304.01

Total Other Uses of Funds

\$6,063,304.01

Total 5240 Debt Service Fund Transfers

\$6,063,304.01

Capital Reserve Fund - § 1431 (32)

2000 Support Services

Total

400 Purchased Property Services

430 Repairs and Maintenance Services

190,639.23

Total Purchased Property Services

\$190,639.23

700 Property

752 Capital Equipment – Original and Additional

159,700.83

762 Capitalized Equipment - Replacement

181,645.63

766 Capitalized Technology Equipment – Replacement

482,550.00

Total Property

\$823,896.46

Total 2000 Support Services

\$1,014,535.69

LEA : 114063003 Governor Mifflin SD

Printed 12/17/2025 8:49:30 AM

Capital Reserve Fund - § 1431 (32)

2200 Support Services – Instructional Staff

700 Property

766 Capitalized Technology Equipment – Replacement

Total Property

Total 2200 Support Services – Instructional Staff

	<u>Elementary</u>	<u>Secondary</u>	<u>Federal</u>	<u>Total</u>
766 Capitalized Technology Equipment – Replacement	244,025.54	238,524.46		482,550.00
Total Property	\$244,025.54	\$238,524.46		\$482,550.00
Total 2200 Support Services – Instructional Staff	\$244,025.54	\$238,524.46		\$482,550.00

Capital Reserve Fund - § 1431 (32)

2240 Computer-Assisted Instruction Support Services

700 Property

766 Capitalized Technology Equipment – Replacement

Total Property

Total 2240 Computer-Assisted Instruction Support Services

	<u>Elementary</u>	<u>Secondary</u>	<u>Federal</u>	<u>Total</u>
766 Capitalized Technology Equipment – Replacement	244,025.54	238,524.46		482,550.00
Total Property	\$244,025.54	\$238,524.46		\$482,550.00
Total 2240 Computer-Assisted Instruction Support Services	\$244,025.54	\$238,524.46		\$482,550.00

Capital Reserve Fund - § 1431 (32)

2600 Operation and Maintenance of Plant Services

Elementary

Secondary

Federal

Total

400 Purchased Property Services

430 Repairs and Maintenance Services

190,639.23

Total Purchased Property Services

\$190,639.23

700 Property

752 Capital Equipment – Original and Additional

159,700.83

762 Capitalized Equipment - Replacement

181,645.63

Total Property

\$341,346.46

Total 2600 Operation and Maintenance of Plant Services

\$531,985.69

Capital Reserve Fund - § 1431 (32)

2620 Operation of Buildings Services

Elementary

Secondary

Federal

Total

400 Purchased Property Services

430 Repairs and Maintenance Services

190,639.23

Total Purchased Property Services

\$190,639.23

700 Property

752 Capital Equipment – Original and Additional

159,700.83

762 Capitalized Equipment - Replacement

181,645.63

Total Property

\$341,346.46

Total 2620 Operation of Buildings Services

\$531,985.69

LEA : 114063003 Governor Mifflin SD

Printed 12/17/2025 8:49:43 AM

Capital Reserve Fund - § 1431 (32)

3000 Operation of Non-Instructional Services

Total

700 Property

752 Capital Equipment – Original and Additional

14,000.00

Total Property

\$14,000.00

Total 3000 Operation of Non-Instructional Services

\$14,000.00

LEA : 114063003 Governor Mifflin SD

Printed 12/17/2025 8:49:43 AM

Capital Reserve Fund - § 1431 (32)

3200 Student Activities

Elementary

Secondary

Federal

Total

700 Property

752 Capital Equipment – Original and Additional

14,000.00

Total Property

\$14,000.00

Total 3200 Student Activities

\$14,000.00

Capital Reserve Fund - § 1431 (32)

4000 Facilities Acquisition, Construction and Improvement Services

Total

300 Purchased Professional and Technical Services

330 Other Professional Services

13,659.00

Total Purchased Professional and Technical Services

\$13,659.00

400 Purchased Property Services

450 Construction Services

2,738.00

Total Purchased Property Services

\$2,738.00

Total 4000 Facilities Acquisition, Construction and Improvement Services

\$16,397.00

LEA : 114063003 Governor Mifflin SD

Printed 12/17/2025 8:49:57 AM

Capital Reserve Fund - § 1431 (32)

4200 Existing Site Improvement Services

Elementary

Secondary

Federal

Total

300 Purchased Professional and Technical Services

330 Other Professional Services

13,659.00

Total Purchased Professional and Technical Services

\$13,659.00

Total 4200 Existing Site Improvement Services

\$13,659.00

LEA : 114063003 Governor Mifflin SD

Printed 12/17/2025 8:49:57 AM

Capital Reserve Fund - § 1431 (32)

4600 Existing Building Improvement Services

Elementary

Secondary

Federal

Total

400 Purchased Property Services

450 Construction Services

2,738.00

Total Purchased Property Services

\$2,738.00

Total 4600 Existing Building Improvement Services

\$2,738.00

Other Capital Projects Fund (39)

4000 Facilities Acquisition, Construction and Improvement Services

Total

300 Purchased Professional and Technical Services

330 Other Professional Services 747,871.78

Total Purchased Professional and Technical Services \$747,871.78

400 Purchased Property Services

450 Construction Services 2,183,166.77

490 Other Purchased Property Services 51,950.08

Total Purchased Property Services \$2,235,116.85

700 Property

758 Capitalized Technology Software - Original 8,955.00

790 Other Property 500.00

Total Property \$9,455.00

Total 4000 Facilities Acquisition, Construction and Improvement Services \$2,992,443.63

Other Capital Projects Fund (39)

4300 Architecture and Engineering Services / Educational Specifications Development – Original and Additional

Elementary

Secondary

Federal

Total

300 Purchased Professional and Technical Services

330 Other Professional Services

947.00

Total Purchased Professional and Technical Services

\$947.00

Total 4300 Architecture and Engineering Services / Educational Specifications Development – Original and Additional

\$947.00

Other Capital Projects Fund (39)

4400 Architecture and Engineering Services / Educational Specifications – Improvements

Elementary

Secondary

Federal

Total

300 Purchased Professional and Technical Services

330 Other Professional Services

553,284.78

Total Purchased Professional and Technical Services

\$553,284.78

Total 4400 Architecture and Engineering Services / Educational Specifications – Improvements

\$553,284.78

Other Capital Projects Fund (39)

4500 Building Acquisition and Construction Services – Original and Additional	<u>Elementary</u>	<u>Secondary</u>	<u>Federal</u>	<u>Total</u>
300 <u>Purchased Professional and Technical Services</u>				
330 Other Professional Services				16,000.00
Total Purchased Professional and Technical Services				\$16,000.00
400 <u>Purchased Property Services</u>				
450 Construction Services				71,268.22
490 Other Purchased Property Services				5,000.00
Total Purchased Property Services				\$76,268.22
700 <u>Property</u>				
790 Other Property				500.00
Total Property				\$500.00
Total 4500 Building Acquisition and Construction Services – Original and Additional				\$92,768.22

Other Capital Projects Fund (39)

	<u>Elementary</u>	<u>Secondary</u>	<u>Federal</u>	<u>Total</u>
4600 Existing Building Improvement Services				
300 <u>Purchased Professional and Technical Services</u>				
330 Other Professional Services				177,640.00
Total Purchased Professional and Technical Services				\$177,640.00
400 <u>Purchased Property Services</u>				
450 Construction Services				2,111,898.55
490 Other Purchased Property Services				46,950.08
Total Purchased Property Services				\$2,158,848.63
700 <u>Property</u>				
758 Capitalized Technology Software - Original				8,955.00
Total Property				\$8,955.00
Total 4600 Existing Building Improvement Services				\$2,345,443.63

Debt Service Fund (40)

5000 Other Expenditures and Financing Uses

Total

800 Other Objects

830 Interest 2,653,304.00

Total Other Objects \$2,653,304.00

900 Other Uses of Funds

910 Redemption of Principal 3,410,000.00

Total Other Uses of Funds \$3,410,000.00

Total 5000 Other Expenditures and Financing Uses \$6,063,304.00

Debt Service Fund (40)

5100 Debt Service / Other Expenditures and Financing Uses	<u>Elementary</u>	<u>Secondary</u>	<u>Federal</u>	<u>Total</u>
800 <u>Other Objects</u>				
830 Interest				2,653,304.00
Total Other Objects				\$2,653,304.00
900 <u>Other Uses of Funds</u>				
910 Redemption of Principal				3,410,000.00
Total Other Uses of Funds				\$3,410,000.00
Total 5100 Debt Service / Other Expenditures and Financing Uses				\$6,063,304.00

Debt Service Fund (40)

5110 Debt Service

Elementary

Secondary

Federal

Total

800 Other Objects

830 Interest

2,653,304.00

Total Other Objects

\$2,653,304.00

900 Other Uses of Funds

910 Redemption of Principal

3,410,000.00

Total Other Uses of Funds

\$3,410,000.00

Total 5110 Debt Service

\$6,063,304.00

	<u>General Fund(10)</u>	<u>Student Sponsored Activity Fund(21)</u>	<u>Public Purpose Trust(27)</u>	<u>Other Compt Approved (28)</u>	<u>Athletic / Activity(29)</u>
1000 Instruction					
1100 Regular Programs - Elementary / Secondary	33,035,085.00				
1200 Special Programs - Elementary / Secondary	16,356,203.87				
1300 Vocational Education	1,623,363.96				
1400 Other Instructional Programs - Elementary / Secondary	135,892.01				
1500 Nonpublic School Programs	9,762.79				
1800 Pre-Kindergarten	609,766.20				
Total Instruction	\$51,770,073.83				
2000 Support Services					
2100 Support Services - Students	3,296,662.57				
2200 Support Services - Instructional Staff	3,354,386.27				
2300 Support Services - Administration	4,175,084.06				
2400 Support Services - Pupil Health	917,360.89				
2500 Support Services - Business	1,286,900.87				
2600 Operation and Maintenance of Plant Services	6,669,406.99				
2700 Student Transportation Services	4,292,817.11				
2800 Support Services - Central	1,786,239.65				
2900 Other Support Services	53,677.57				
Total Support Services	\$25,832,535.98				
3000 Operation of Non-Instructional Services					
3200 Student Activities	1,909,524.03				
3300 Community Services	176,725.64				
Total Operation of Non-Instructional Services	\$2,086,249.67				
4000 Facilities Acquisition, Construction and Improvement Services					
4200 Existing Site Improvement Services	3,749.71				
4300 Architecture and Engineering Services / Educational Specifications Development - Original and Additional					
4400 Architecture and Engineering Services / Educational Specifications - Improvements					
4500 Building Acquisition and Construction Services - Original and Additional					
4600 Existing Building Improvement Services	174,831.00				
Total Facilities Acquisition, Construction and Improvement Services	\$178,580.71				
5000 Other Expenditures and Financing Uses					
5100 Debt Service / Other Expenditures and Financing Uses	636,505.13				
5200 Interfund Transfers - Out	6,063,304.01				
Total Other Expenditures and Financing Uses	\$6,699,809.14				

	<u>Capital Reserve (690.1850)(31)</u>	<u>Capital Reserve (1431)(32)</u>	<u>Other Capital Projects Fund(39)</u>	<u>Debt Service(40)</u>	<u>Permanent(90)</u>
1000 Instruction					
1100 Regular Programs - Elementary / Secondary					
1200 Special Programs - Elementary / Secondary					
1300 Vocational Education					
1400 Other Instructional Programs - Elementary / Secondary					
1500 Nonpublic School Programs					
1800 Pre-Kindergarten					
Total Instruction					
2000 Support Services					
2100 Support Services - Students					
2200 Support Services - Instructional Staff		482,550.00			
2300 Support Services - Administration					
2400 Support Services - Pupil Health					
2500 Support Services - Business					
2600 Operation and Maintenance of Plant Services		531,985.69			
2700 Student Transportation Services					
2800 Support Services - Central					
2900 Other Support Services					
Total Support Services		\$1,014,535.69			
3000 Operation of Non-Instructional Services					
3200 Student Activities		14,000.00			
3300 Community Services					
Total Operation of Non-Instructional Services		\$14,000.00			
4000 Facilities Acquisition, Construction and Improvement Services					
4200 Existing Site Improvement Services		13,659.00			
4300 Architecture and Engineering Services / Educational Specifications Development - Original and Additional			947.00		
4400 Architecture and Engineering Services / Educational Specifications - Improvements			553,284.78		
4500 Building Acquisition and Construction Services - Original and Additional			92,768.22		
4600 Existing Building Improvement Services		2,738.00	2,345,443.63		
Total Facilities Acquisition, Construction and Improvement Services		\$16,397.00	\$2,992,443.63		
5000 Other Expenditures and Financing Uses					
5100 Debt Service / Other Expenditures and Financing Uses				6,063,304.00	
5200 Interfund Transfers - Out					
Total Other Expenditures and Financing Uses				\$6,063,304.00	

Total

1000 Instruction

1100 Regular Programs - Elementary / Secondary	33,035,085.00
1200 Special Programs - Elementary / Secondary	16,356,203.87
1300 Vocational Education	1,623,363.96
1400 Other Instructional Programs - Elementary / Secondary	135,892.01
1500 Nonpublic School Programs	9,762.79
1800 Pre-Kindergarten	609,766.20
Total Instruction	\$51,770,073.83

2000 Support Services

2100 Support Services - Students	3,296,662.57
2200 Support Services - Instructional Staff	3,836,936.27
2300 Support Services - Administration	4,175,084.06
2400 Support Services - Pupil Health	917,360.89
2500 Support Services - Business	1,286,900.87
2600 Operation and Maintenance of Plant Services	7,201,392.68
2700 Student Transportation Services	4,292,817.11
2800 Support Services - Central	1,786,239.65
2900 Other Support Services	53,677.57
Total Support Services	\$26,847,071.67

3000 Operation of Non-Instructional Services

3200 Student Activities	1,923,524.03
3300 Community Services	176,725.64
Total Operation of Non-Instructional Services	\$2,100,249.67

4000 Facilities Acquisition, Construction and Improvement Services

4200 Existing Site Improvement Services	17,408.71
4300 Architecture and Engineering Services / Educational Specifications Development - Original and Additional	947.00
4400 Architecture and Engineering Services / Educational Specifications - Improvements	553,284.78
4500 Building Acquisition and Construction Services - Original and Additional	92,768.22
4600 Existing Building Improvement Services	2,523,012.63
Total Facilities Acquisition, Construction and Improvement Services	\$3,187,421.34

5000 Other Expenditures and Financing Uses

5100 Debt Service / Other Expenditures and Financing Uses	6,699,809.13
5200 Interfund Transfers - Out	6,063,304.01
Total Other Expenditures and Financing Uses	\$12,763,113.14

	<u>General Fund(10)</u>	<u>Student Sponsored Activity Fund(21)</u>	<u>Public Purpose Trust(27)</u>	<u>Other Compt Approved (28)</u>	<u>Athletic / Activity(29)</u>
TOTAL ACTUAL EXPENDITURES & OTHER FINANCING USES	\$86,567,249.33				

	<u>Capital Reserve (690.1850)(31)</u>	<u>Capital Reserve (1431)(32)</u>	<u>Other Capital Projects Fund(39)</u>	<u>Debt Service(40)</u>	<u>Permanent(90)</u>
TOTAL ACTUAL EXPENDITURES & OTHER FINANCING USES		\$1,044,932.69	\$2,992,443.63	\$6,063,304.00	

Total

TOTAL ACTUAL EXPENDITURES & OTHER FINANCING USES	\$96,667,929.65
---	------------------------

PSERS Salary Data (Salary Data should relate to the General Fund only)

Amount Description	Amount
Total Salary Base for salaries subject to PSERS withholding	35,158,123.11
Total Federally Funded salaries subject to PSERS withholding	1,237,528.77
	<hr/>

Title I Expenditure Data

Amount Description	Amount
Expenditures Funded with Current Title I Funds	679,300.00
Total Title I Expenditure Data	\$679,300.00
	<hr/>

Title IV Revenue Data

Amount Description	Amount
Revenue from Title IV-A-1: Student Support and Academic Enrichment Grants	51,060.76
	<hr/>

1.	<u>Current Special Education Expenditures within Function 1000</u> See list of exclusions in the note below.	21,000,210.43
2.	<u>Current Special Education Expenditures within Function 2000</u> See list of exclusions in the note below.	5,759,324.72
2A.	<u>Current Special Education Expenditures within Sub-Function 2100</u> This data should also be included in line 2 above. See list of exclusions in the note below.	690,787.49
2B.	<u>Current Special Education Expenditures within Sub-Function 2200</u> This data should also be included in line 2 above. See list of exclusions in the note below.	914,768.75
2C.	<u>Current Special Education Expenditures within Sub-Function 2700</u> This data should also be included in line 2 above. See list of exclusions in the note below.	1,594,255.28
3.	<u>Current Special Education Expenditures within Sub-Function 3100</u> See list of exclusions in the note below.	532,496.22
4.	<u>Current Special Education Expenditures within Sub-Function 3200</u> See list of exclusions in the note below.	405,756.39

Note: The Current Special Education Expenditure amounts for each line should be calculated as follows:

- * Include the total expenditures for special education costs from all governmental funds and the food service fund 51 for the function/sub-function requested
- * Exclude data from sub-functions: 1243,1450,1500,1600,1807,2280,2450,2750,2990
- * Exclude data from objects: 322,511,512,516,561,562,564,566,592,593,594,595,596,597,700,830,899

Benefits for Staff Relative to Collective Bargaining Agreements

	OBJECT	COVERED	NOT COVERED	TOTAL
10 General Fund	No Self Insurance data to report			
	211 Medical Insurance	7,246,266.56	87,297.55	7,333,564.11
	212 Dental Insurance	342,675.58	3,581.20	346,256.78
	215 Eye Care Insurance			
	216 Prescription Insurance			
	271 Self-Insurance Medical Benefits			
	272 Self-Insurance Dental Benefits			
	275 Self-Insurance Eye Care Benefits			
	276 Self-Insurance Prescription Benefits			
	FUND TOTAL		\$7,588,942.14	\$90,878.75
50 Enterprise Fund	No Self Insurance data to report			
	211 Medical Insurance	63,028.98		63,028.98
	212 Dental Insurance	6,089.76		6,089.76
	215 Eye Care Insurance			
	216 Prescription Insurance			
	271 Self-Insurance Medical Benefits			
	272 Self-Insurance Dental Benefits			
	275 Self-Insurance Eye Care Benefits			
	276 Self-Insurance Prescription Benefits			
	FUND TOTAL		\$69,118.74	
60 Internal Service Fund	No Self Insurance data to report			
	211 Medical Insurance			
	212 Dental Insurance			
	215 Eye Care Insurance			
	216 Prescription Insurance			
	271 Self-Insurance Medical Benefits			
	272 Self-Insurance Dental Benefits			
	275 Self-Insurance Eye Care Benefits			
	276 Self-Insurance Prescription Benefits			
	FUND TOTAL			
Total of All Funds		\$7,658,060.88	\$90,878.75	\$7,748,939.63

LEA : 114063003 Governor Mifflin SD

Printed 12/17/2025 8:50:38 AM

Function	Special Education (Prior Year)	Nonspecial Education (Prior Year)	Total (Prior Year)	Special Education (Current Year)	Nonspecial Education (Current Year)	Total (Current Year)
2120 Guidance Services	389,763.34	1,419,535.79	1,809,299.13	382,727.04	1,418,418.92	1,801,145.96
2140 Psychological Services	734,895.80		734,895.80	801,208.63		801,208.63
2150 Speech Pathology and Audiology Services						
2160 Social Work Services	64,340.01	234,329.24	298,669.25	76,251.37	282,594.07	358,845.44
2260 Instruction and Curriculum Development Services	355,603.29	196,571.93	552,175.22	416,371.06	279,546.32	695,917.38
2350 Legal and Accounting Services	150,905.83	82,523.75	233,429.58	229,910.50	145,540.70	375,451.20
2420 Medical Services	455.81	1,660.07	2,115.88	2,039.54	7,558.70	9,598.24
2440 Nursing Services	180,852.99	658,674.82	839,527.81	192,891.26	714,871.39	907,762.65
2700 Student Transportation Services	1,581,166.85	2,208,488.03	3,789,654.88	1,594,255.28	2,698,561.83	4,292,817.11
Total	\$3,457,983.92	\$4,801,783.63	\$8,259,767.55	\$3,695,654.68	\$5,547,091.93	\$9,242,746.61

(PRINCIPAL AMOUNTS ONLY)

GOVERNMENTAL FUNDS/ ACTIVITIES

	Short-Term Borrowing	General Obligation Bonds/Notes	Authority Building Obligations	Leases, Other Right to Use Arrangements	Extended Term Financing Agreements	Other Long Term Debt/Liabilities	OPEB, Comp Abs, Net Pension Liab	Total
1. Debt at Beginning of Fiscal Year		88,360,000.00		1,038,777.80		5,308,829.00	100,307,626.00	195,015,232.80
2. Additional Debt Incurred During Year				363,863.00	298,339.00		2,553,315.00	3,215,517.00
3. Retirements and Repayments		3,410,000.00		502,253.00	79,579.13	244,084.00	11,019,105.00	15,255,021.13
4. Debt at End of Fiscal Year		84,950,000.00		900,387.80	218,759.87	5,064,745.00	91,841,836.00	182,975,728.67
5. Accreted Interest at End Of Fiscal Year								
6. Total Debt and Accreted Interest		84,950,000.00		900,387.80	218,759.87	5,064,745.00	91,841,836.00	182,975,728.67
7. Current Portion P&I - Due within 1 year		6,064,254.10		461,034.00	69,735.00	244,084.00	54,375.00	6,893,482.10
8. Interest Paid during current fiscal year		2,653,304.50		54,673.00				2,707,977.50

(PRINCIPAL AMOUNTS ONLY)

PROPRIETARY FUNDS

	Short-Term Borrowing	General Obligation Bonds/Notes	Authority Building Obligations	Leases, Other Right to Use Arrangements	Extended Term Financing Agreements	Other Long Term Debt/Liabilities	OPEB, Comp Abs, Net Pension Liab	Total
1. Debt at Beginning of Fiscal Year							2,223,974.00	2,223,974.00
2. Additional Debt Incurred During Year							9,920.00	9,920.00
3. Retirements and Repayments							325,939.00	325,939.00
4. Debt at End of Fiscal Year							1,907,955.00	1,907,955.00
5. Accreted Interest at End Of Fiscal Year								
6. Total Debt and Accreted Interest							1,907,955.00	1,907,955.00
7. Current Portion P&I - Due within 1 year								
8. Interest Paid during current fiscal year								

Total Principal and Interest Payments Made by Your School - All Funds

Function	Fund		Principal (910)	Principal (920)	Interest (830)	Total (Principal +Interest)	Misc Other Uses (990)
5110	10	General Fund	79,579.13			79,579.13	
5110	20	Special Revenue Funds					
5110	30	Capital Projects Funds					
5110	40	Debt Service Fund	3,410,000.00		2,653,304.00	6,063,304.00	
5110	90	Permanent Fund					
5120	10	General Fund					
5120	20	Special Revenue Funds					
5120	30	Capital Projects Funds					
5120	40	Debt Service Fund					
5140	10	General Fund	502,253.00		54,673.00	556,926.00	
5140	20	Special Revenue Funds					
5140	30	Capital Projects Funds					
5140	40	Debt Service Fund					
5140	90	Permanent Fund					
Total Debt Payments - Governmental Funds			\$3,991,832.13		\$2,707,977.00	\$6,699,809.13	

Function	Fund		Principal (910)	Principal (920)	Interest (830)	Total (Principal +Interest)
5110	50	Enterprise Fund				
5110	60	Internal Service Fund				
5120	50	Enterprise Fund				
5120	60	Internal Service Fund				
5140	50	Enterprise Fund				
5140	60	Internal Service Fund				
Total Debt Payments - Proprietary Funds						

Debt Details
Governmental Funds/ Activities

Debt Category	Debt Issue Date (MM/YYYY)	Principal Amounts Only			Debt at End of Fiscal Year	Current Portion Due Within One Year (Principal and Interest)	Interest Paid During Fiscal Year
		Debt at Beginning of Fiscal Year	Additions	Reductions / Repayments			
General Obligation Bonds/Notes – CIB	04/2021	27,730,000.00		190,000.00	27,540,000.00	1,172,225.00	979,125.00
General Obligation Bonds/Notes – CIB	07/2020	19,395,000.00		3,185,000.00	16,210,000.00	3,476,666.00	283,167.00
General Obligation Bonds/Notes – CIB	07/2020	14,575,000.00		30,000.00	14,545,000.00	344,538.10	325,137.50
General Obligation Bonds/Notes – CIB	07/2020	26,660,000.00		5,000.00	26,655,000.00	1,070,825.00	1,065,875.00
Leases and Other Right to Use Arrangements		1,038,777.80	363,863.00	502,253.00	900,387.80	461,034.00	54,673.00
Extended Term Financing Agreements			298,339.00	79,579.13	218,759.87	69,735.00	
Other Long Term Debt/Liabilities		5,308,829.00		244,084.00	5,064,745.00	244,084.00	
Compensated Absences		351,979.00	22,044.00	10,000.00	364,023.00	54,375.00	
Other Post-Employment Benefits (OPEB)		6,555,615.00	471,826.00	318,130.00	6,709,311.00		
Net Pension Liability		93,400,032.00	2,059,445.00	10,690,975.00	84,768,502.00		
Totals for Debt Entered:		\$195,015,232.80	\$3,215,517.00	\$15,255,021.13	\$182,975,728.67	\$6,893,482.10	\$2,707,977.50

Bond Details
Proprietary Funds

Debt Category	Debt Issue Date (MM/YYYY)	Principal Amounts Only			Debt at End of Fiscal Year	Current Portion Due Within One Year (Principal and Interest)	Interest Paid During Fiscal Year
		Debt at Beginning of Fiscal Year	Additions	Reductions / Repayments			
Compensated Absences		3,394.00	102.00		3,496.00		
Other Post-Employment Benefits (OPEB)		197,612.00	9,818.00	6,469.00	200,961.00		
Net Pension Liability		2,022,968.00		319,470.00	1,703,498.00		
Totals for Debt Entered:		\$2,223,974.00	\$9,920.00	\$325,939.00	\$1,907,955.00		

General Fund (10)

Section 1: Tuition/Purchased Services as Reported within Expenditure Detail

	Amount
Tuition Reported in General Fund Expenditures 1000-560	7,959,199.77
Purchased Services in General Fund Expenditures 1000-594 and 1000-597	6,840.99
Section 1 Total	\$7,966,040.76

Section 2: Tuition Paid to Institution Types During Fiscal Year

	Tuition Paid For Nonspecial Education	Tuition Paid For Special Education	Total
1 1306 Institutions			
2 Institutionalized Children's Programs	71,790.00	3,772,852.34	3,844,642.34
3 Juveniles Incarcerated in Adult Facilities	11,710.87		11,710.87
4 Residential Treatment Facilities			
5 Other Local Education Agencies		236,418.33	236,418.33
6 Brick and Mortar Charter Schools			
7 Cyber Charter Schools	720,256.53	1,109,732.35	1,829,988.88
8 Career and Technology Centers	1,623,363.96	30,071.16	1,653,435.12
9 Approved Private Schools		334,771.99	334,771.99
10 PA Chartered Schools for the Deaf and Blind			
11 Private Residential Rehabilitative Institutions	44,329.30		44,329.30
12 Juvenile Detention Centers			
13 Special Program Jointures			
14 Other Tuition Not Included Elsewhere In This Section	3,902.94	6,840.99	10,743.93
Section 2 Total	\$2,475,353.60	\$5,490,687.16	\$7,966,040.76

Food Service / Cafeteria Operations Fund (51)

3000 Operation of Non-Instructional Services

Total

100 Personnel Services – Salaries	
100 Personnel Services – Salaries	775,345.07
Total Personnel Services – Salaries	\$775,345.07
200 Personnel Services – Employee Benefits	
210 Group Insurance – Contracted Provider	73,465.78
220 Social Security Contributions	59,305.21
230 PSERS Retirement Contributions	77,670.95
260 Workers’ Compensation	3,896.26
280 Other Post-Employment Benefits (OPEB)	(4,466.00)
299 All Other Employee Benefits	3,878.14
Total Personnel Services – Employee Benefits	\$213,750.34
300 Purchased Professional and Technical Services	
300 Purchased Professional and Technical Services	3,727.00
Total Purchased Professional and Technical Services	\$3,727.00
400 Purchased Property Services	
430 Repairs and Maintenance Services	17,960.19
Total Purchased Property Services	\$17,960.19
500 Other Purchased Services	
580 Travel	2,651.51
Total Other Purchased Services	\$2,651.51
600 Supplies	
610 General Supplies	77,231.68
630 Food	1,414,451.85
Total Supplies	\$1,491,683.53
700 Property	
740 Depreciation	23,182.14
Total Property	\$23,182.14
800 Other Objects	
810 Dues and Fees	854.79
Total Other Objects	\$854.79
Total 3000 Operation of Non-Instructional Services	\$2,529,154.57

Food Service / Cafeteria Operations Fund (51)

	<u>Elementary</u>	<u>Secondary</u>	<u>Federal</u>	<u>Total</u>
3100 Food Services				
100 Personnel Services – Salaries				
100 Personnel Services – Salaries				775,345.07
Total Personnel Services – Salaries				\$775,345.07
200 Personnel Services – Employee Benefits				
210 Group Insurance – Contracted Provider				73,465.78
220 Social Security Contributions				59,305.21
230 PSERS Retirement Contributions				77,670.95
260 Workers' Compensation				3,896.26
280 Other Post-Employment Benefits (OPEB)				(4,466.00)
299 All Other Employee Benefits				3,878.14
Total Personnel Services – Employee Benefits				\$213,750.34
300 Purchased Professional and Technical Services				
300 Purchased Professional and Technical Services				3,727.00
Total Purchased Professional and Technical Services				\$3,727.00
400 Purchased Property Services				
430 Repairs and Maintenance Services				17,960.19
Total Purchased Property Services				\$17,960.19
500 Other Purchased Services				
580 Travel				2,651.51
Total Other Purchased Services				\$2,651.51
600 Supplies				
610 General Supplies				77,231.68
630 Food				1,414,451.85
Total Supplies				\$1,491,683.53
700 Property				
740 Depreciation				23,182.14
Total Property				\$23,182.14
800 Other Objects				
810 Dues and Fees				854.79
Total Other Objects				\$854.79
Total 3100 Food Services				\$2,529,154.57

Food Service / Cafeteria Operations Fund (51)

5000 Other Expenditures and Financing Uses

Total

900 Other Uses of Funds

939 Other Fund Transfers

34,489.27

Total Other Uses of Funds

\$34,489.27

Total 5000 Other Expenditures and Financing Uses

\$34,489.27

Food Service / Cafeteria Operations Fund (51)

	<u>Elementary</u>	<u>Secondary</u>	<u>Federal</u>	<u>Total</u>
5200 Interfund Transfers – Out				
900 <u>Other Uses of Funds</u>				
939 Other Fund Transfers				34,489.27
Total Other Uses of Funds				\$34,489.27
Total 5200 Interfund Transfers – Out				\$34,489.27

Food Service / Cafeteria Operations Fund (51)

	<u>Elementary</u>	<u>Secondary</u>	<u>Federal</u>	<u>Total</u>
5210 General Fund Transfers				
900 Other Uses of Funds				
939 Other Fund Transfers				34,489.27
Total Other Uses of Funds				\$34,489.27
Total 5210 General Fund Transfers				\$34,489.27

	<u>Food Service(51)</u>	<u>Child Care Operations(52)</u>	<u>Other Enterprise(58)</u>	<u>Internal Service(60)</u>	<u>Total</u>
3000 <u>Operation of Non-Instructional Services</u>					
3100 Food Services	2,529,154.57				2,529,154.57
Total Operation of Non-Instructional Services	\$2,529,154.57				\$2,529,154.57
5000 <u>Other Expenditures and Financing Uses</u>					
5200 Interfund Transfers - Out	34,489.27				34,489.27
Total Other Expenditures and Financing Uses	\$34,489.27				\$34,489.27
TOTAL ACTUAL EXPENDITURES & OTHER FINANCING USES	\$2,563,643.84				\$2,563,643.84

LEA : 114063003 Governor Mifflin SD

Printed 12/17/2025 8:51:12 AM

Fund	School	School Number	Local Personnel	Local Nonpersonnel	State Personnel	State Nonpersonnel	Federal Personnel	Federal Nonpersonnel	Total	Explanation
10	Brecknock El Sch	793	4,370,313.62	847,985.90	1,965,009.23	381,277.01	88,434.10	17,159.15	7,670,179.01	
	Cumru El Sch	794	4,909,544.05	1,036,194.76	2,207,461.58	465,900.72	99,345.53	20,967.59	8,739,414.23	
	Governor Mifflin MS	801	6,268,241.10	1,203,117.97	2,818,367.91	540,953.84	126,839.01	24,345.31	10,981,865.14	
	Governor Mifflin SHS	802	12,577,865.13	2,608,776.62	5,655,342.68	1,172,975.35	254,515.42	52,789.08	22,322,264.28	
	Intermediate Sch	6794	5,982,152.24	1,297,154.32	2,689,734.75	583,235.08	121,049.95	26,248.16	10,699,574.50	
	Mifflin Park El Sch	8096	4,514,821.84	900,047.79	2,029,983.97	404,685.42	91,358.25	18,212.63	7,959,109.90	
Total			38,622,937.98	7,893,277.36	17,365,900.12	3,549,027.42	781,542.26	159,721.92	68,372,407.06	

	<u>Nonspecial Education</u>	<u>Special Education</u>
1000 Instruction		
1400 Other Instructional Programs - Elementary / Secondary	11,711.00	
Total Instruction	\$11,711.00	
TOTAL ACTUAL EXPENDITURES & OTHER FINANCING USES	\$11,711.00	

LEA : 114063003 Governor Mifflin SD

Printed 12/17/2025 8:51:18 AM

1000 Instruction

500 Other Purchased Services

561 Tuition To Other School Districts Within the State

11,711.00

Total Other Purchased Services

\$11,711.00

Total 1000 Instruction

\$11,711.00

LEA : 114063003 Governor Mifflin SD

Printed 12/17/2025 8:51:18 AM

1400 Other Instructional Programs - Elementary / Secondary	<u>Nonspecial Education</u>	<u>Special Education</u>
500 <u>Other Purchased Services</u>		
561 Tuition To Other School Districts Within the State	11,711.00	
Total Other Purchased Services	\$11,711.00	
Total 1400 Other Instructional Programs - Elementary / Secondary	\$11,711.00	

LEA : 114063003 Governor Mifflin SD

Printed 12/17/2025 8:51:18 AM

1440 Alternative Regular Education Programs	<u>Nonspecial Education</u>	<u>Special Education</u>
500 <u>Other Purchased Services</u>		
561 Tuition To Other School Districts Within the State	11,711.00	
Total Other Purchased Services	\$11,711.00	
Total 1440 Alternative Regular Education Programs	\$11,711.00	

LEA : 114063003 Governor Mifflin SD

Printed 12/17/2025 8:51:18 AM

1441 Adjudicated / Court-Placed Programs	<u>Nonspecial Education</u>	<u>Special Education</u>
500 Other Purchased Services		
561 Tuition To Other School Districts Within the State	11,711.00	
Total Other Purchased Services	\$11,711.00	
Total 1441 Adjudicated / Court-Placed Programs	\$11,711.00	