

# FY26-27 Superintendent's Recommended Capital & Operating Budget

Lunda Asmani, CPFO

BOE Chief Financial Officer | Norwalk Public Schools

December 16, 2025

## FY26-27 BOE Superintendent Recommended Capital Budget

### Non School Construction

School District Paving & ADA Compliance
BOE Asbestos Abatement Program
Replacement of Middle School Lockers
Oil Tank Replacement
Air Conditioning Program
Instructional Technology
Student Technology
K-12 Literacy Curriculum Implementation
Band /Strings Instrument Replacements
Curriculum Materials & Textbooks
Capital Repairs and Replacement
BMHS / CGS Cooling Plant Upgrade
School Projects/Equipment
Heating System Replacements
District Vehicles
Enhancement to School Security
Brookside Montessori Program Expansion
Science & Social Studies Curriculum
West Rocks Roof Repair
High School Math Curriculum
Roof Replacement
Naramake Improvements
<b>Total Non School Construction</b>

2023-24	2024-25	2025-26	2026-27	2027-2028	2028-2029	2029-2030	2030-31	5-Year Total
Council Approved	Council Approved	Council Approved	Superintendent Recommended	Planned	Planned	Planned	Planned	
100,000	700,000	400,000	400,000	-	-	4,000,000	-	<b>4,400,000</b>
100,000	600,000	1,400,000	600,000	400,000	600,000	-	-	<b>1,600,000</b>
-	500,000	250,000	-	-	-	-	-	-
500,000	500,000	250,000	-	-	-	-	-	-
650,000	500,000	500,000	-	-	-	-	-	-
800,000	437,500	1,619,375	2,215,930	2,266,916	2,323,898	2,147,209	2,180,294	<b>11,134,247</b>
-	-	922,510	707,250	600,000	600,000	600,000	600,000	<b>3,107,250</b>
-	-	300,000	300,000	300,000	300,000	-	-	<b>900,000</b>
300,000	300,000	300,000	300,000	200,000	-	-	-	<b>500,000</b>
100,000	250,000	-	-	-	-	-	-	-
50,000	250,000	250,000	250,000	250,000	250,000	250,000	250,000	<b>1,250,000</b>
100,000	-	-	-	-	-	-	-	-
250,000	-	-	240,000	-	-	-	-	<b>240,000</b>
-	200,000	-	-	-	-	-	-	-
-	198,000	-	150,000	-	-	-	-	<b>150,000</b>
1,000,000	86,500	327,000	330,000	330,000	300,000	300,000	300,000	<b>1,560,000</b>
75,000	125,000	-	-	-	-	-	-	-
-	-	200,000	400,000	300,000	-	-	-	<b>700,000</b>
-	-	240,000	-	-	-	-	-	-
-	-	-	-	200,000	200,000	-	-	<b>400,000</b>
-	-	-	-	200,000	-	-	-	<b>200,000</b>
-	-	-	-	800,000	3,500,000	-	-	<b>4,300,000</b>
<b>\$4,025,000</b>	<b>\$4,647,000</b>	<b>\$6,958,885</b>	<b>5,893,180</b>	<b>\$5,846,916</b>	<b>\$8,073,898</b>	<b>\$7,297,209</b>	<b>\$3,330,294</b>	<b>\$30,441,497</b>

### School Construction

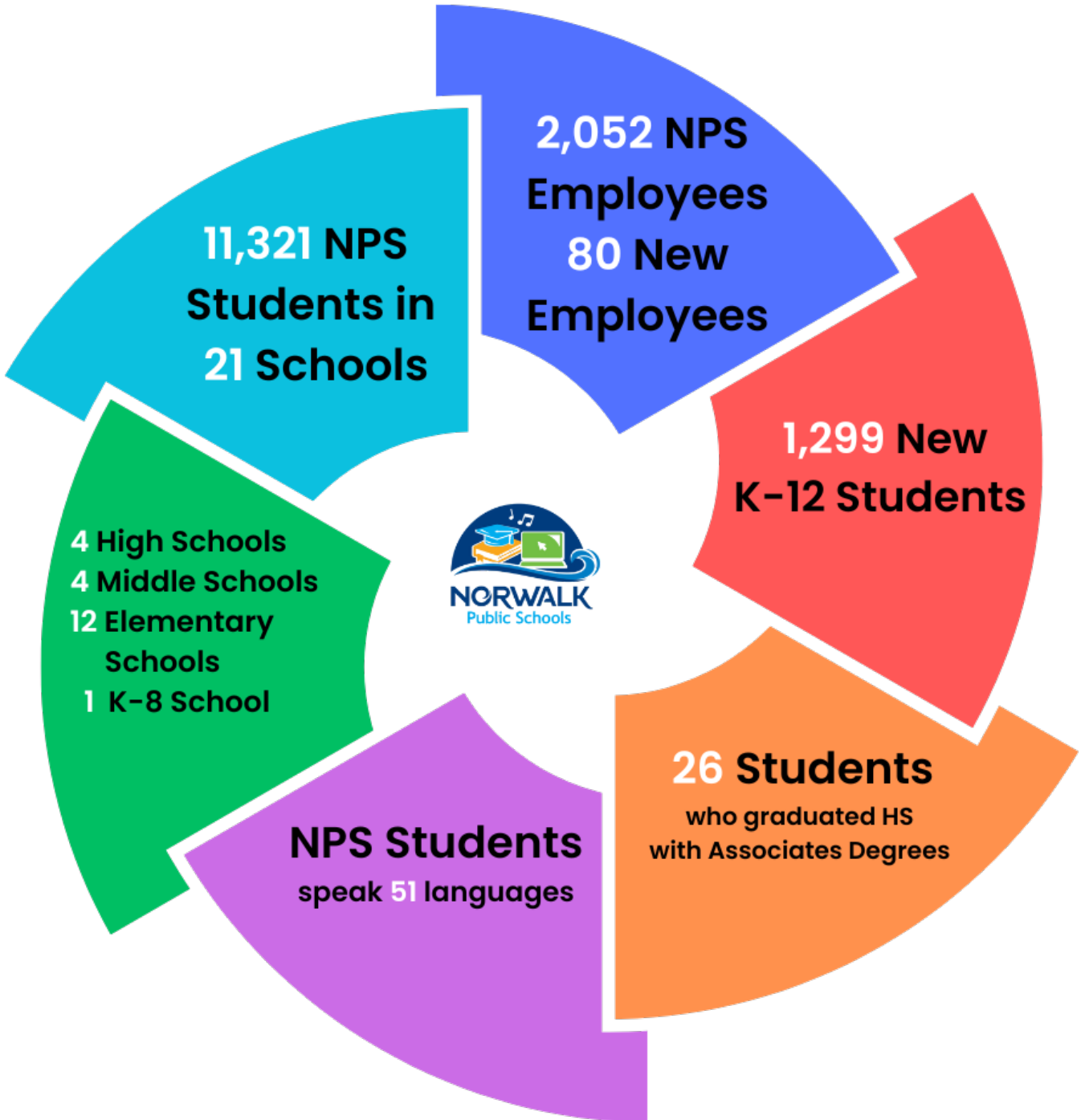
South Norwalk School Land Acquisition
NHS/PTECH Construction
West Rocks Construction
West Rocks Drainage
<b>Total School Construction</b>

-	3,370,000	-	-	-	-	-	-	-
-	-	-	22,000,000	-	-	-	-	22,000,000
-	-	-	-	125,000,000	-	-	-	125,000,000
-	-	-	-	400,000	2,000,000	-	-	2,400,000
-	<b>\$3,370,000</b>	-	<b>22,000,000</b>	<b>125,400,000</b>	<b>2,000,000</b>	-	-	<b>149,400,000</b>

### Grand Total

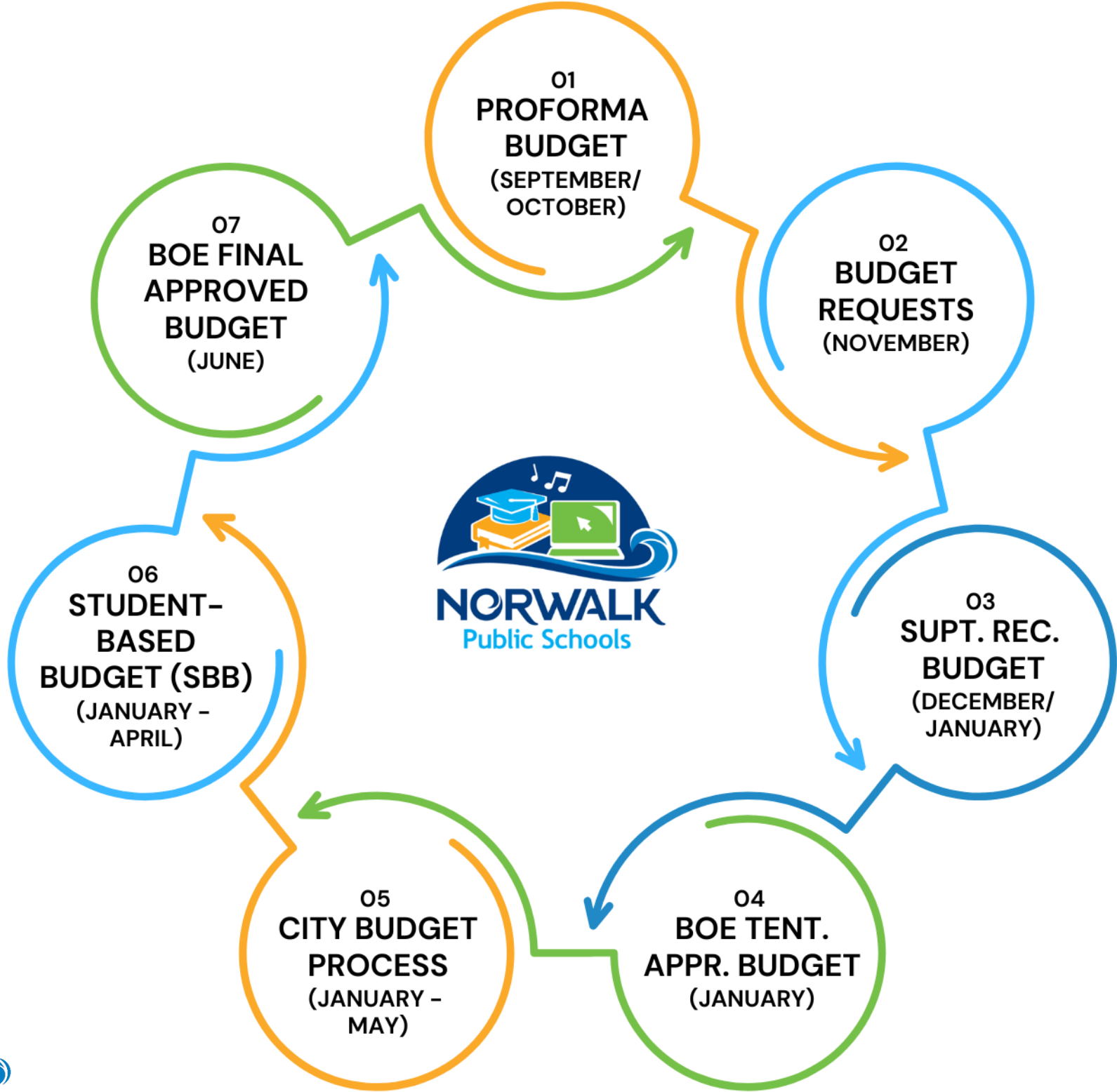
<b>\$4,025,000</b>	<b>\$8,017,000</b>	<b>\$6,958,885</b>	<b>\$27,893,180</b>	<b>\$131,246,916</b>	<b>\$10,073,898</b>	<b>\$7,297,209</b>	<b>\$3,330,294</b>	<b>\$179,841,497</b>
--------------------	--------------------	--------------------	---------------------	----------------------	---------------------	--------------------	--------------------	----------------------

# Norwalk Public Schools At-A-Glance



\* As of October 1, 2025

# How The Budget Comes Together





# BUDGET ENGAGEMENTS TO DATE

FOCUSING ON THE FISCAL YEAR

**2026-27 OPERATING  
AND CAPITAL BUDGETS**

#	Date	Meeting
01	9/10/25	BOE Finance Committee Meeting
02	9/16/25	BOE Business Meeting
03	9/24/25	Special Joint Finance Committee Public Hearing
04	10/21/25	BOE Business Meeting
05	11/12/25	BOE Finance Committee Meeting
06	11/12/25	BOE Workshop
07	11/18/25	BOE Business Meeting
08	11/19/25	Town Hall on FY2026-27 Operating
09	12/9/25	BOE Workshop on Superintendent Recommended Operating & Capital Budget

For details of each meeting, visit **Board Docs** located within the **BOE Website**  
**BOE Website:** [bit.ly/NPSboeWebsite](https://bit.ly/NPSboeWebsite)



# UPCOMING BUDGET ENGAGEMENTS

FOCUSING ON THE FISCAL YEAR

**2026-27 OPERATING  
AND CAPITAL BUDGETS**

#	Date	Meeting
10	<b>12/16/25</b>	BOE Approves Superintendent Recommended Operating & Capital Budget
11	<b>1/7/26</b>	Budget Update to Elementary School Governance Councils
12	<b>1/8/26</b>	BOE & Common Council Joint Finance Committee Meeting
13	<b>1/13/26</b>	Presentation of Superintendent Recommended Operating & Capital Budget to New BOE
14	<b>1/14/26</b>	Budget Update to Secondary School Governance Councils
15	<b>2/11/26</b>	FY26 Update to BOE Finance Committee
16	<b>2/12/26</b>	Common Council Finance Committee Holds Public Hearing on Operating Budget; Operating Cap Recommended to Council
17	<b>2/24/26</b>	Common Council Adopts Preliminary Expenditure Cap
18	<b>3/26/26</b>	BET Public Hearing on Operating Budget

# Recap: FY26 Budget Reconciliation

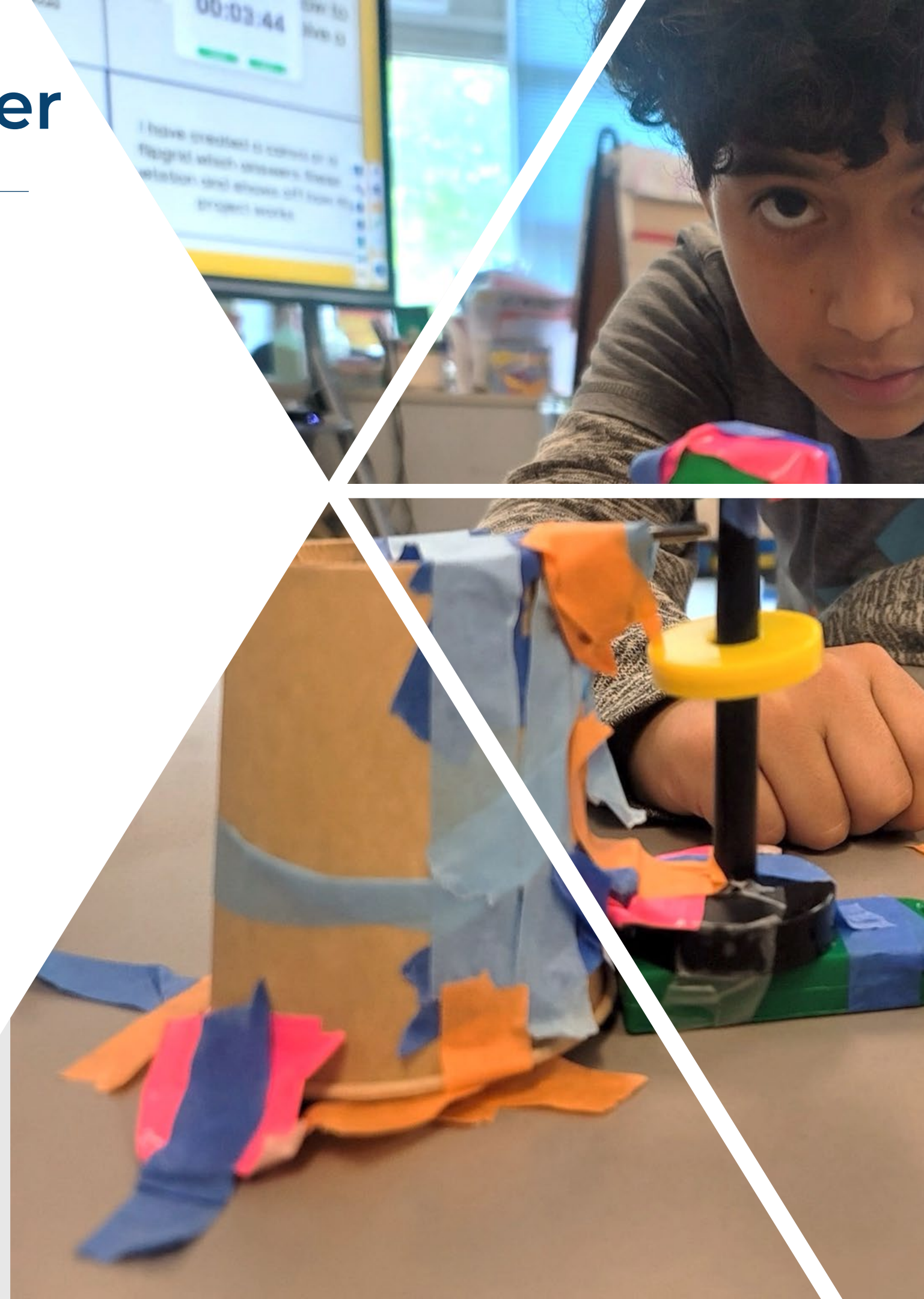
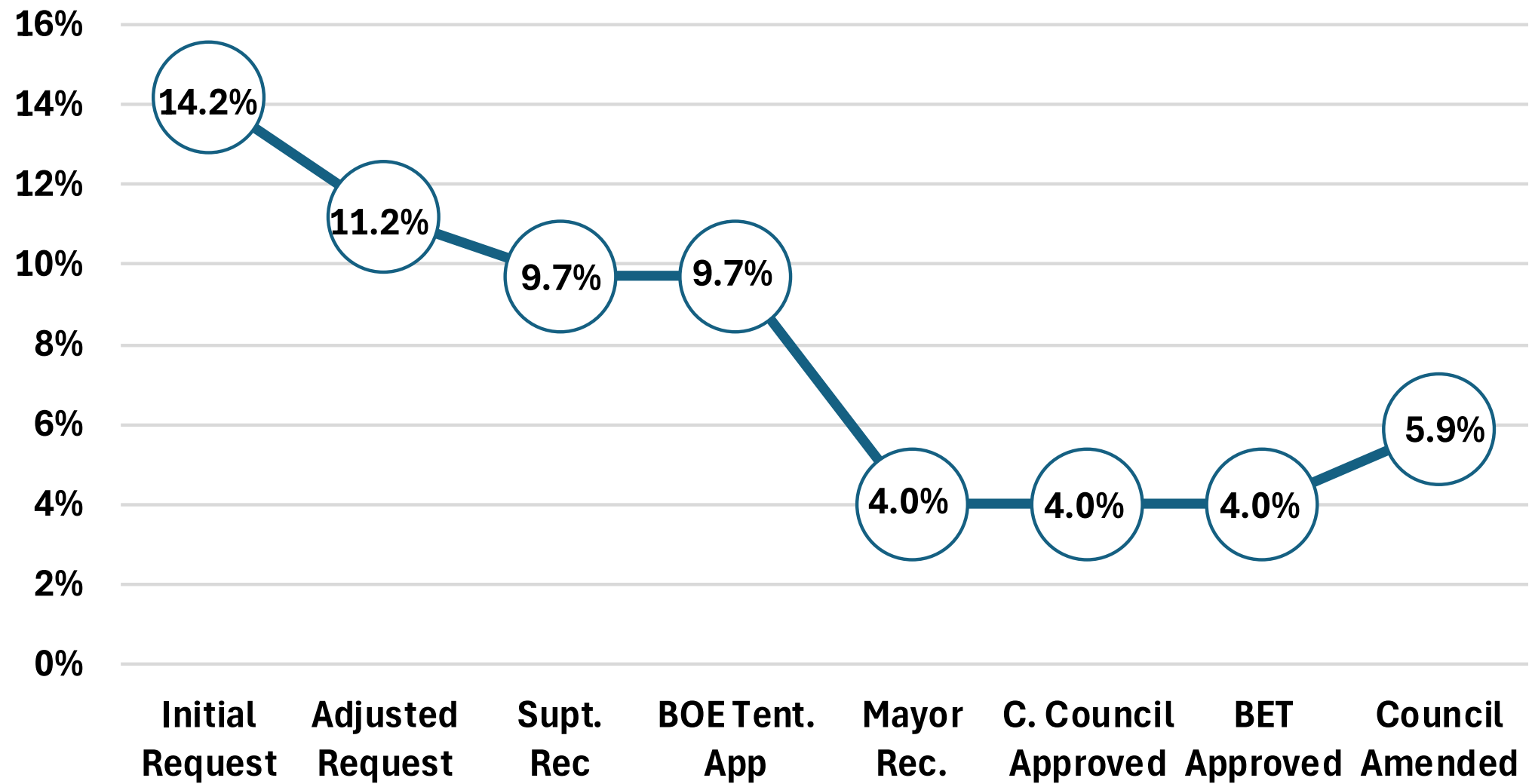
## FY26 Budget Reconciliation

<i>Description</i>	<i>AMOUNT</i>	
<i>FY25 Budget</i>	233,360,344	
<b><i>FY26 BOE Tentative Approved Budget</i></b>	<b><i>\$255,955,975</i></b>	<b><i>9.7%</i></b>
<i>Net Budget Adjustments and Revenue Offsets</i>	2,350,582	
<i>FY26 BOE Adjusted Budget Request</i>	<b><i>\$258,306,557</i></b>	<b><i>10.7%</i></b>
<b><i>FY26 BET Budget Cap</i></b>	<b><i>\$242,694,758</i></b>	<b><i>4.0%</i></b>
<i>Initial Reductions Needed to Meet Initial FY26 Cap</i>	15,611,800	
<i>Additional City Funding for BOE Budget</i>	4,500,000	
<i>Final Reductions Needed to Meet Amended FY26 Cap</i>	11,111,800	
<b><i>Total BOE Amended Budget</i></b>	<b><i>\$247,194,758</i></b>	<b><i>5.9%</i></b>

*In June 2025, an additional \$6.5 million was allocated to Norwalk Public Schools through a combination of funds from the City of Norwalk Reserve and grants from the State of Connecticut to reconcile the FY25–26 BOE Operating Budget. \$2.0 million was appropriated to the BOE health insurance account and \$4.5 million towards the FY26 BOE Operating Budget.*

# How The FY25-26 Budget Came Together

## FY26 BOE Operating Budget Development



# Breakdown of the \$4.5 Million Funding Increase

Norwalk High School	802,549
Brien McMahon High School	581,751
P TECH Norwalk	189,816
<b>Total High School</b>	<b>\$1,574,116</b>

West Rocks Middle School	422,469
Ponus Ridge STEAM Academy	163,284
Roton Middle School	120,975
Nathan Hale Middle School	82,139
<b>Total Middle School</b>	<b>\$788,867</b>

**Special Education** **\$245,234**

Concord Magnet School	274,970
Wolfpit Integrated Arts School	229,292
Brookside Elementary School	226,919
Silvermine Dual Language Magnet School	208,144
Tracey Magnet School	181,710
Fox Run Elementary School	142,982
Marvin Elementary School	130,378
Naramake Elementary School	126,389
Kendall College and Career Academy	122,137
Rowayton Elementary School	96,798
Cranbury Elementary School	81,233
South Norwalk School	70,831
<b>Total Elementary School</b>	<b>\$1,891,783</b>

# FY26-27 General Fund

	2022-23 ACTUAL	2023-24 ACTUAL	2024-25 ACTUAL	2025-26 APPROVED	2025-26 AMENDED	2026-27 SUPT. RECO.	FY26-FY27 CHANGE	
							AMOUNT	%
Salaries	128,799,077	140,581,320	146,902,487	144,837,492	148,427,113	155,610,577	7,183,464	4.8%
Benefits	38,936,340	34,927,104	31,682,752	37,925,044	38,815,422	42,948,234	4,132,812	10.6%
Professional & Technical Services	9,012,912	7,921,625	9,438,513	8,724,807	8,744,807	9,899,815	1,155,008	13.2%
Property Services	8,453,945	9,407,164	9,843,551	11,234,552	11,234,552	11,318,309	83,757	0.7%
Other Student Services	21,980,943	23,932,852	26,020,306	27,175,378	27,175,378	29,290,998	2,115,619	7.8%
Supplies & Materials	7,948,114	7,551,854	7,924,001	10,175,386	10,175,386	9,526,898	(648,488)	-6.4%
Equipment	2,497,842	1,912,990	1,484,541	1,764,458	1,764,458	1,614,243	(150,215)	-8.5%
Other Objects	193,676	135,675	123,334	185,040	185,040	199,960	14,920	8.1%
Transfers	-	200,000	-	672,601	672,601	2,739,758	2,067,157	307.3%
<b>Total General Fund Expenditures</b>	<b>217,822,848</b>	<b>226,570,584</b>	<b>233,419,484</b>	<b>242,694,758</b>	<b>247,194,758</b>	<b>263,148,792</b>	<b>15,954,034</b>	<b>6.5%</b>



The FY26-27 budget reflects a \$15.9 million (6.5%) year-over-year increase, 71% of which is driven by salaries and benefits.

# FY26-27: What's Shaping the Budget

## Special Education

An increase in student identification and provider rates is raising overall service needs. Continue expansion of *in-house* specialized programming.

Expanding *two full-day pre-K programs* at Wolfpit and South Norwalk School through the SMART START Grant to meet growing student needs.

## Insurance Costs

The district is now responsible for liability, auto, and property insurance previously paid by the city.

## School Meals

Ongoing funding ensures all students continue to have access to free school meals.

## Staff Pay and Benefits

Budget accounts for negotiated salary increases and rising health insurance costs.

## South Norwalk School Staffing

Supports additional staff and resources as the school adds a 4th grade this year.

## Retirement Contributions

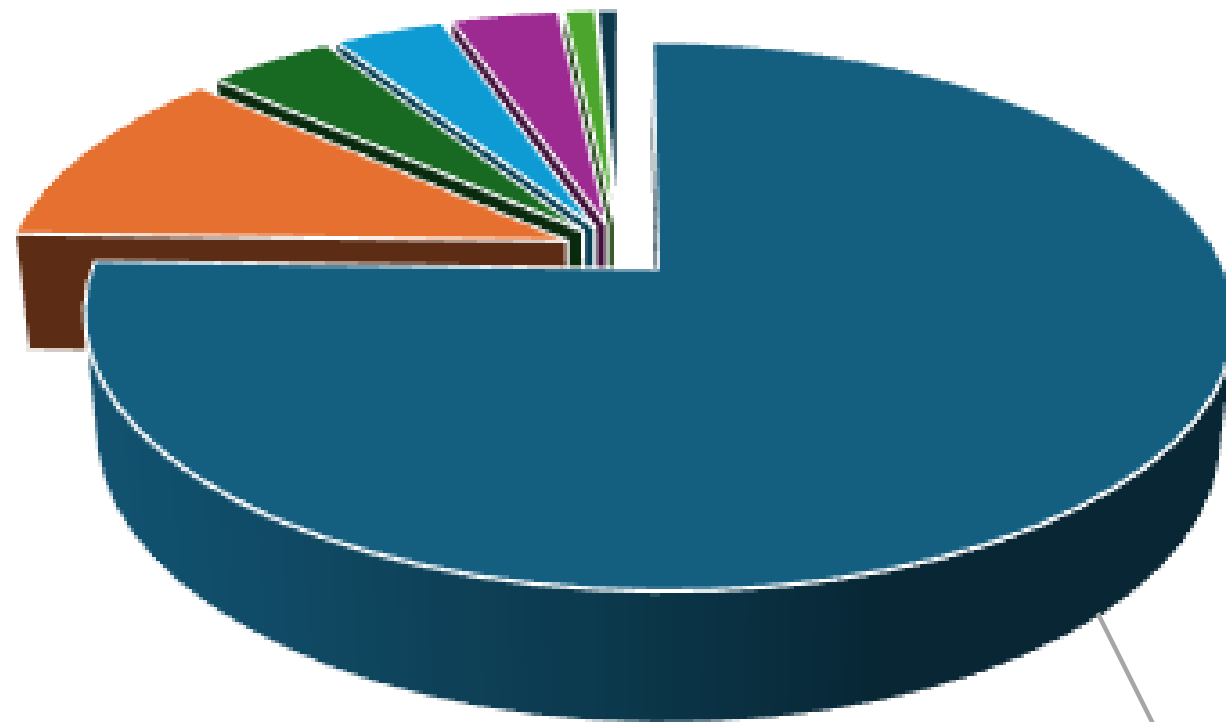
Reflects new employer contribution rates for employees' 401(a) plans.

## Service Contracts

Higher costs across key district vendors and services.

# FY26-27 General Fund: How Funds Are Spent

**BOE General Fund      \$263.15 Million**



**Salaries &  
Benefits,  
\$198.56 , 75%**

## BOE General Fund

Salaries & Benefits	198.56	75.5%
Other Student Services	29.29	11.1%
Property Services	11.32	4.3%
Professional & Technical Services	9.90	3.8%
Supplies & Materials	9.53	3.6%
Transfers to Other Funds	2.74	1.0%
Equipment & Other Materials	1.81	0.7%
<b>Total General Fund Expenditures</b>	<b><u>\$263.15</u></b>	<b><u>100.0%</u></b>



**NORWALK**  
Public Schools