

REMOTE LEARNING



 Moon Area School District
Family and Student Guide



List of Contents



Introduction

Notification

Schedules

Attendance

Participation and
Assignments

Technology
Troubleshooting

Special Services



INTRODUCTION TO REMOTE LEARNING



The Moon Area School District is approved by the Pennsylvania Department of Education to utilize an alternative instructional approach if certain circumstances arise. These alternative methods are known as Remote Learning Days.

The District may use these instructional approaches instead of in-person classes for several reasons, such as severe weather conditions.

Remote Learning does not change the school calendar, as each of these days counts as a regular school day.





NOTIFICATION

Should Moon Area School District need to implement a Remote Learning Day information will be shared in the following ways:

- A call and email will be sent via Skylert
- An alert will be posted to our website
- Social media posts will be made
- Information will be posted to the local news stations (WPXI, WTAE, KDKA)

Please refer to the District website as your official source for information.





REMOTE LEARNING SCHEDULES

HIGH SCHOOL

MIDDLE SCHOOL

ELEMENTARY SCHOOL


High School students will follow a 2-hour delay school schedule. They should promptly log in to their first period class in Microsoft Teams at **9:30am**.

Middle School students will follow a 2-hour delay school schedule. They should promptly log in to their Advisor Base class in Microsoft Teams at **9:55am**.


Elementary School students will follow a 2-hour delay school schedule. They should promptly log in to their homeroom teacher's classroom in Microsoft Teams at **10:30am**.



ATTENDANCE



Students are expected to log in to Microsoft Teams and attend all of their synchronous classes. If a student does not attend a synchronous class he or she will be marked absent.



All absences will require an excuse note. If a note is not received, the absence will be unexcused. Students will have three school days to complete/make up assignments if they were absent or had technical difficulties.



Participation

When classes are held via Microsoft Teams, we expect students to log in on time and participate actively in their lessons. Students are expected to have their cameras on, as this creates a more engaging learning environment. We ask that students try to find a quiet space to minimize distractions and follow classroom rules, such as muting their microphones when not speaking and using respectful language.



Assignments

We understand that technical issues can sometimes arise during online learning. Therefore, students have up to three days to complete and submit their assignments if they encounter any difficulties. This flexibility ensures that everyone has the opportunity to catch up and fully engage with the material. We encourage students to communicate with their teachers if they are facing challenges so that they can receive support. By staying on top of their assignments and reaching out when needed, students can make the most of their learning experience.



TECHNOLOGY TROUBLESHOOTING



To access the Family iPad Quick Start Guide click on the iPad below.

GRADES K-6



To access the Family Laptop Quick Start Guide click on the Laptop below.

GRADES 7-12





SPECIAL SERVICES

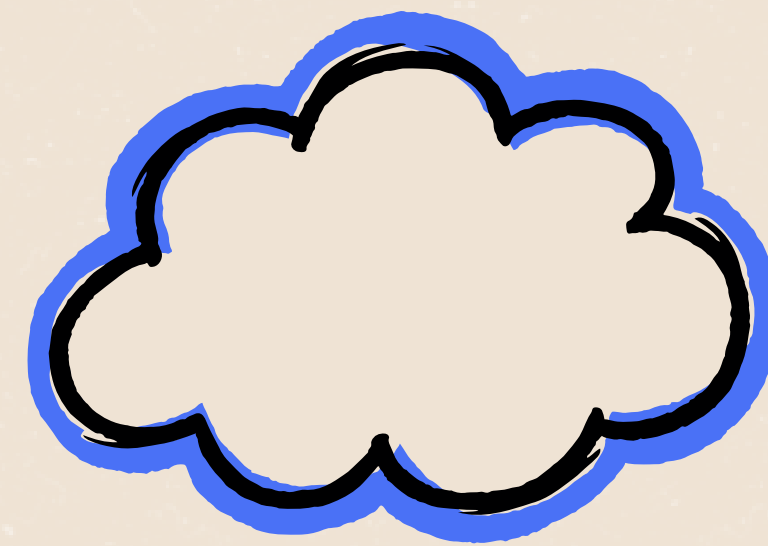


The digital lesson will be designed utilizing program modifications, specially designed instruction, and supplementary aids and services identified in the students' individualized education plans.

Upon return from online learning, teachers of students with IEPs will check-in to review work submitted, checking for completion and understanding.

Any related services (physical therapy, occupational therapy, speech, etc.) that would have occurred during the day of closure will be rescheduled according to the frequency requirements in the students' individualized education plans.





Questions



Please reach out to your building directly:

412-264-9440

- High School: ext. 2000
- Middle School: ext. 3000
- Allard Elementary: ext. 4000
- Bon Meade Elementary: ext. 5000
- Brooks Elementary: ext. 6000
- McCormick Elementary: ext. 9000



An illustration featuring a diverse group of students and educational technology icons. On the left, a girl in a red dress holds a purple tablet, a girl in a brown hijab smiles, a girl in a white hijab holds a pink book, and a boy with glasses and a backpack stands next to a laptop with a green checkmark on its screen. On the right, a boy in an orange sweater uses a smartphone, and a girl in a blue shirt holds a smartphone. A large yellow lightbulb is in the top right, and a blue arrow points down from the top center. A red paw print is above the text box.

Moon Area School District, in partnership with the community, is dedicated to educating every individual in a respectful, safe, enriching environment through a challenging, comprehensive approach that inspires excellence, lifelong learning, and responsibility.