

**Addendum #1 to the Request for Qualifications
Keeneyville School District 20
Architectural Services**

Keeneyville School District 20 (“**District**”) issues this Addendum #1 to the Request for Qualifications for Architectural Services, which was issued on or about December 10, 2025. This Addendum #1 shall be considered part of the Request for Qualifications and is hereby incorporated therein by reference.

1. To ensure our submission aligns with your expectations, could you please confirm whether consultant information is required as part of the initial submission?

Answer: The District is not requiring that consultant information be provided with responses to the RFQ, but we will consider consultant information if the Architect determines that such information is necessary to provide a comprehensive response to the RFQ.

2. Can you give a brief summary of the district’s financials including operating funds, fund balance, and O & M expenditures.

Answer:

- FY26 Expenditure Budget – All Funds: \$31,197,453 (including \$1.8 MM in office renovation)
- FY26 Expenditure Budget – Operating Funds: \$28,242,453
- Projected FY26 Fund Balance – Operating Funds: \$15,533,189 (55% fund balance)
- Operations & Maintenance Budget: \$2,290,575. Major Operations Contracted services:
 - Evening Custodial services
 - Food service
 - Transportation services
 - HVAC Controls
 - HVAC equipment maintenance
- Operating Expense per pupil: \$17,075 (state average \$15,607)
- FY26 EBF Tier Funding: The district is at 81.4% adequacy, making it a Tier 2 District.
- Additional information found in FY26 Budget Presentation on district website [Here](#).

3. When will some of your debt service expire?

Answer: The district currently has 5 outstanding bond issues, with major debt service expiring in 2033. The district has a small margin before reaching DSEB limit and the district may consider Health Life Safety bonds based on the 2026 Health Life Safety inspection.

4. What is enrollment for the Early Childhood Center? Can you describe the program.

Answer: The Early Childhood Center is a stand-alone building with four classrooms and has an enrollment of approximately 60 students. Two classrooms are dedicated to the ISBE Preschool for All program which offers four half-day sessions. Students qualify for programming based on need and at-risk factors. The other two classrooms are dedicated to a self-contained program for students with Individualized Educational Plans. This program also offers four half-day sessions.

5. Maps of the facilities would be helpful in getting a better understanding of the district.

Answer: See Maps below.

In the event of a conflict between the terms and conditions of this Addendum and those of any other document in the Request for Qualifications (as currently constituted and as may be amended from time to time), the terms and conditions in this Addendum shall govern. All other provisions of the Request for Qualifications not expressly modified herein shall remain in full force and effect.

ACKNOWLEDGEMENT OF ADDENDUM NO. 1

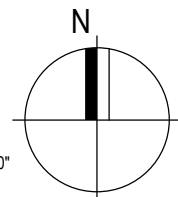
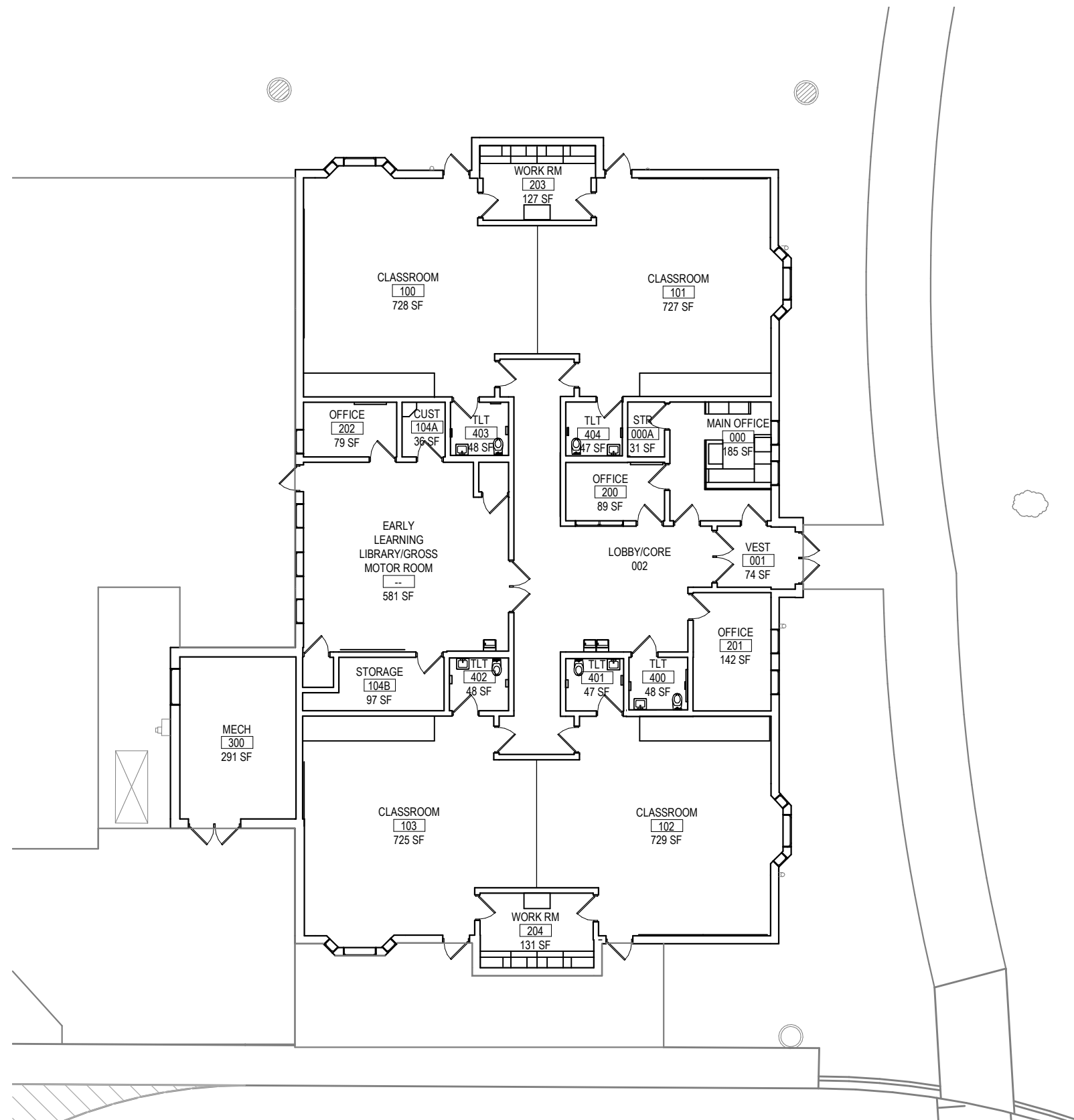
The undersigned contractor certifies that it has received Addendum No. 1 and has considered Addendum No. 1 prior to submitting its proposal and that Addendum No. 1 is incorporated in the RFQ.

Architect Firm Name

Name - Title

Date

EARLY CHILDHOOD CENTER



SCALE: 1/16" = 1'-0"

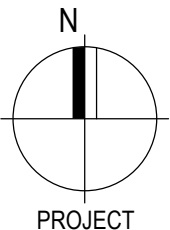
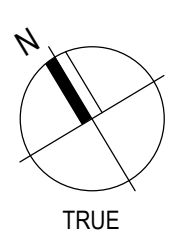
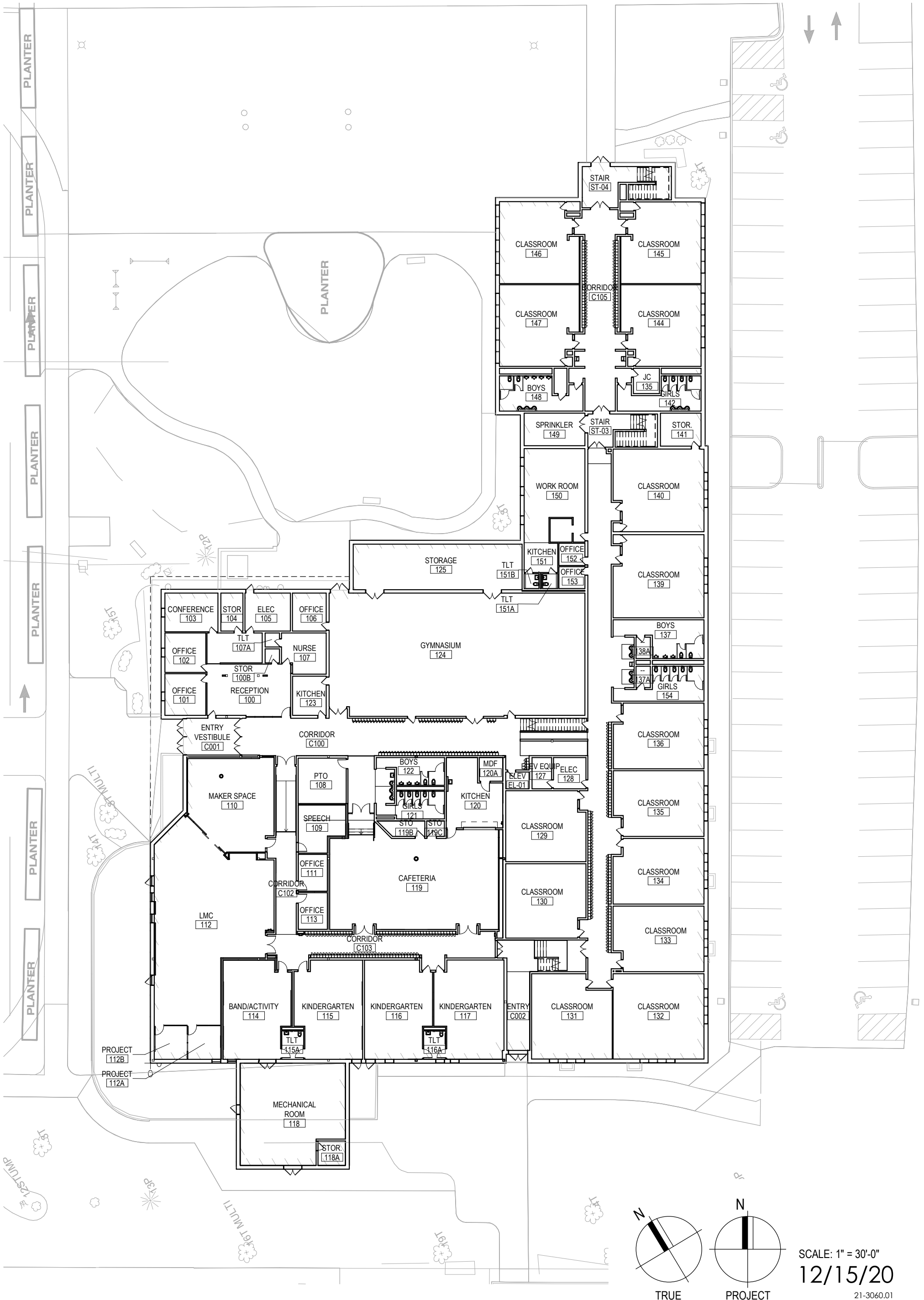
12/15/20

21-3060.01

Greenbrook Elementary School

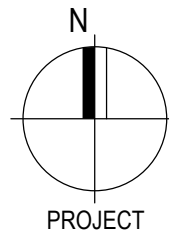
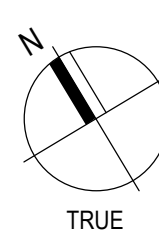
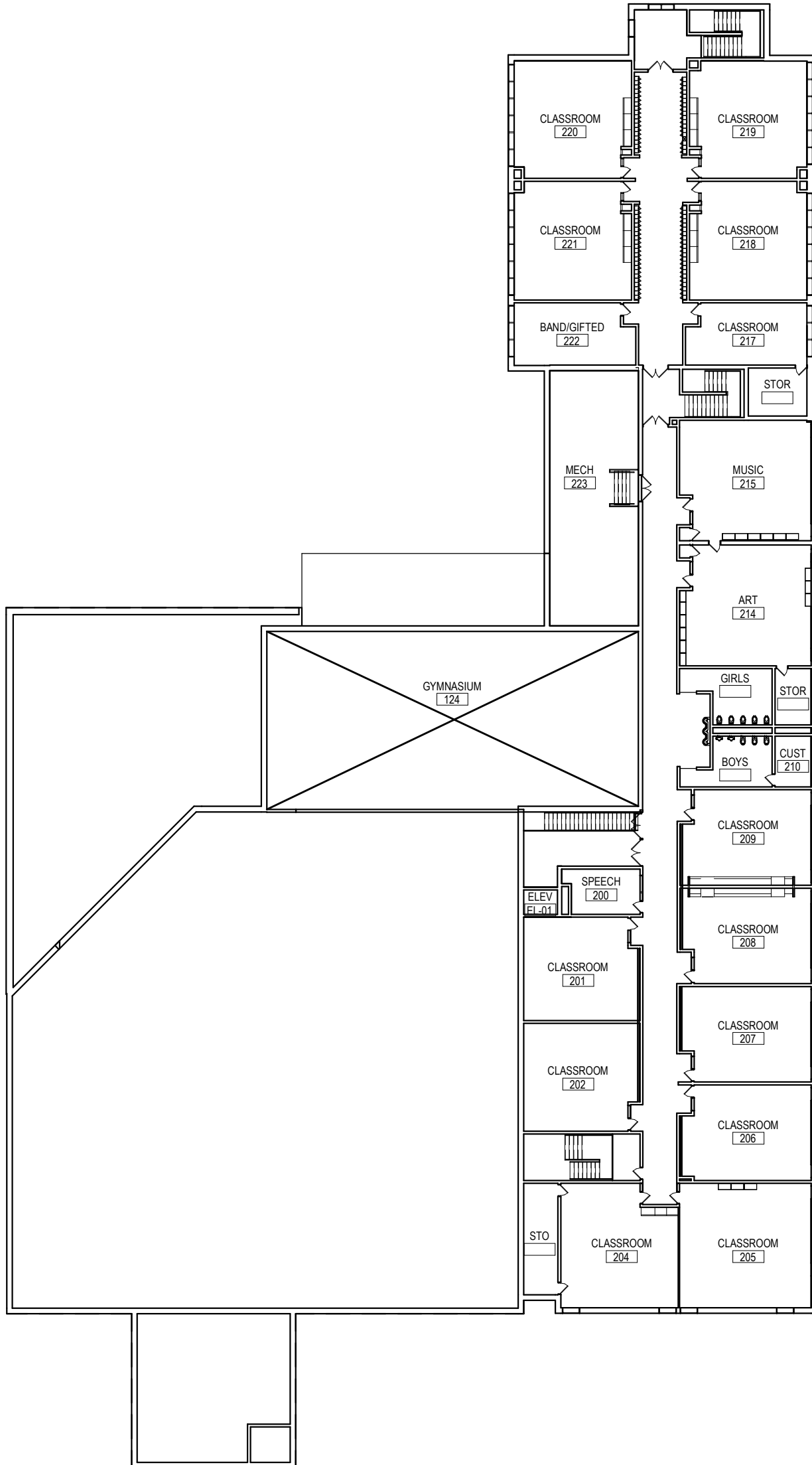


WATERBURY ELEM. SCHOOL



SCALE: 1" = 30'-0"
12/15/20
21-3060.01

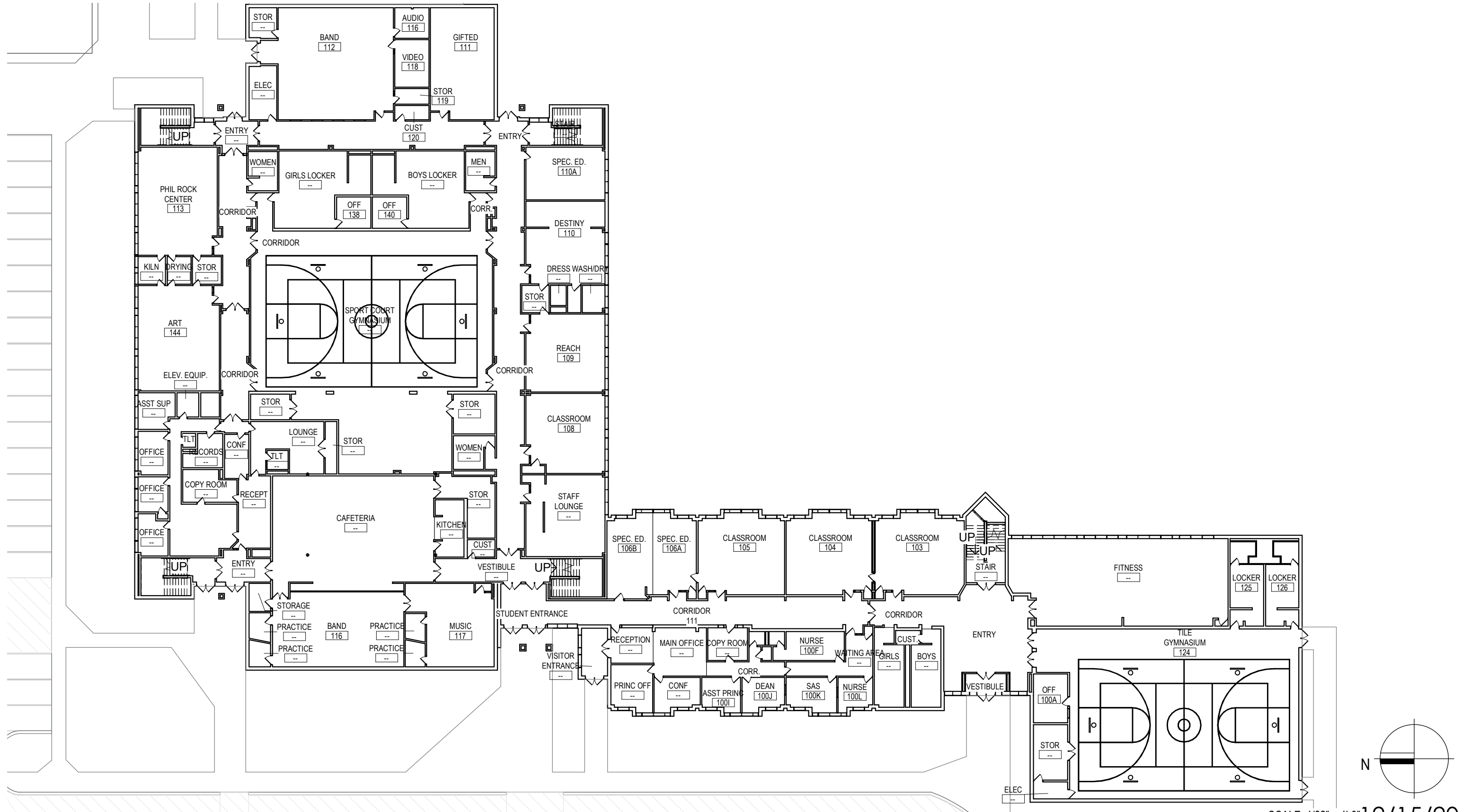
WATERBURY ELEM. SCHOOL



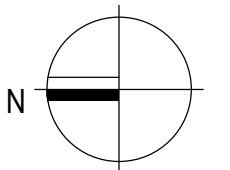
SCALE: 1" = 30'-0"
12/15/20

21-3060.01

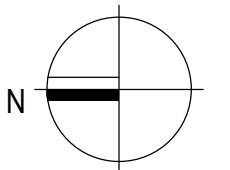
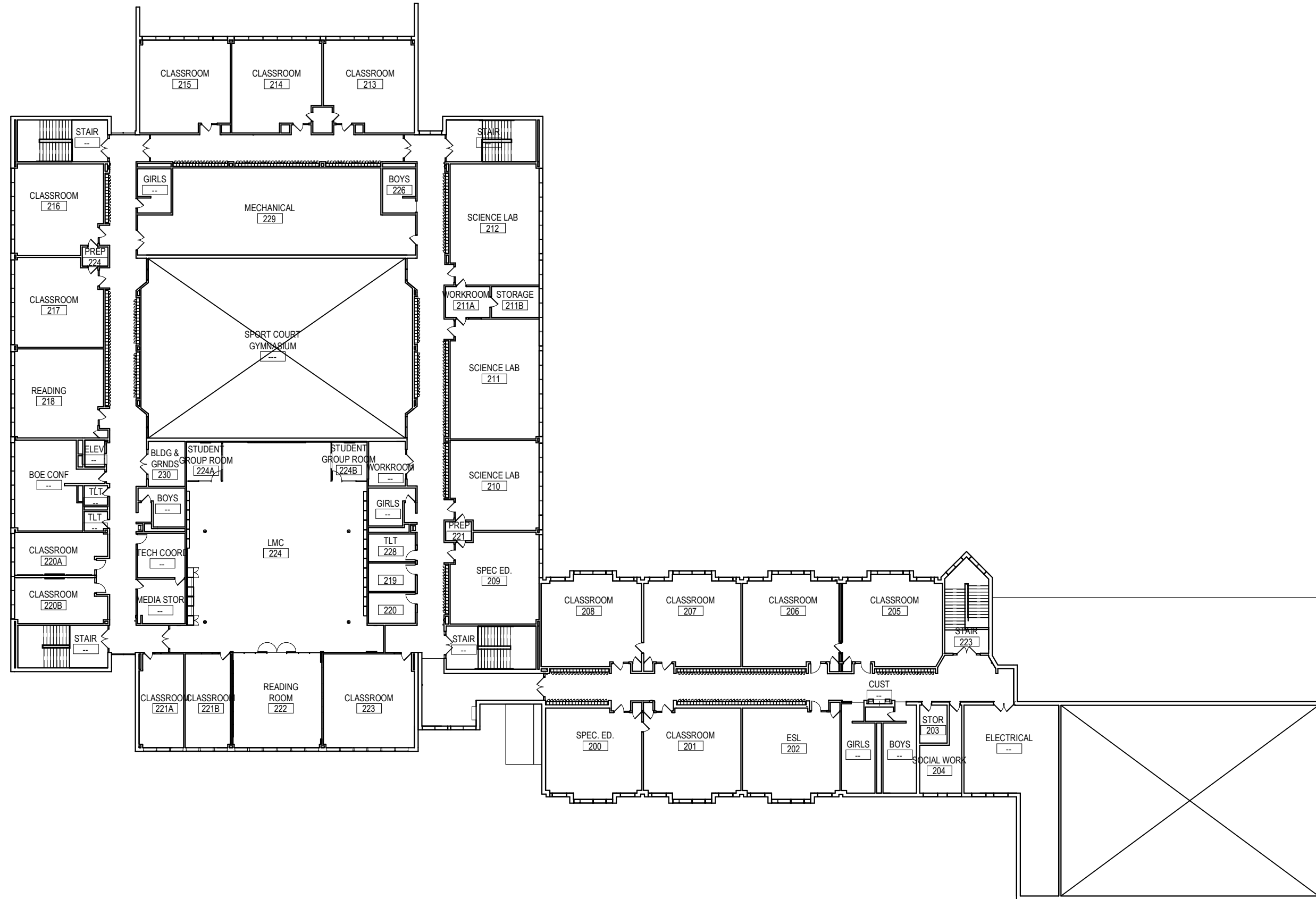
SPRING WOOD MIDDLE SCHOOL



SCALE: 1/32" = 1'-0" | 2/15/20



SPRING WOOD MIDDLE SCHOOL



SCALE: 1/32" = 1'-0" | 2/15/20

21-3060.01