



# OWEN J. ROBERTS SCHOOL DISTRICT

BOARD PRESENTATION

DECEMBER 09, 2025

SCHRADERGROUP



# DISCUSSION

- 01 MIDDLE SCHOOL UPDATE
- 02 HIGH SCHOOL UPDATE
- 03 SITE CONCEPT REVIEW
- 04 DESIGN DEVELOPMENT COST ESTIMATE
- 05 SCHEDULE & PHASING

# DISCUSSION

01 MIDDLE SCHOOL UPDATE

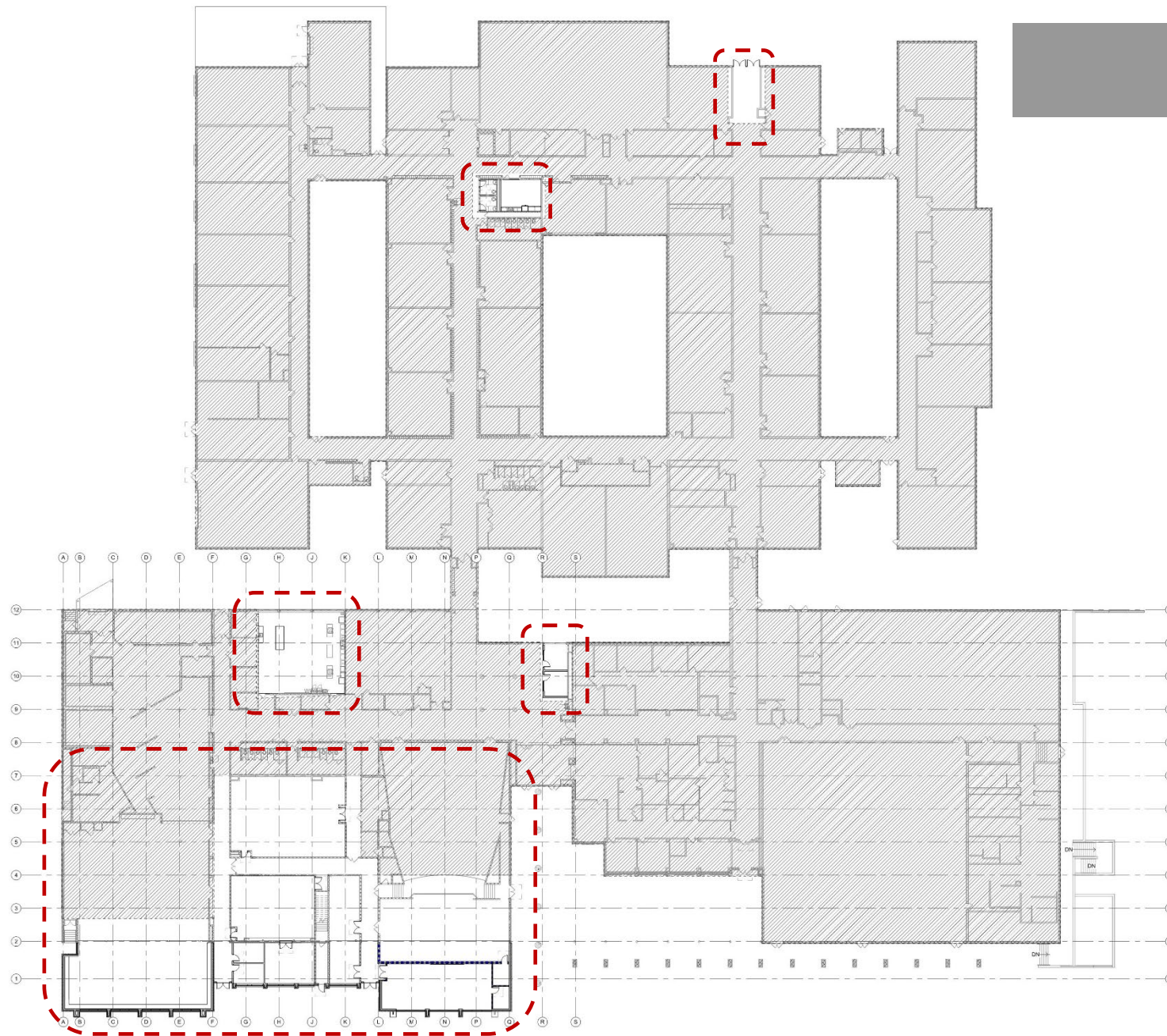
02 HIGH SCHOOL UPDATE

03 SITE CONCEPT REVIEW

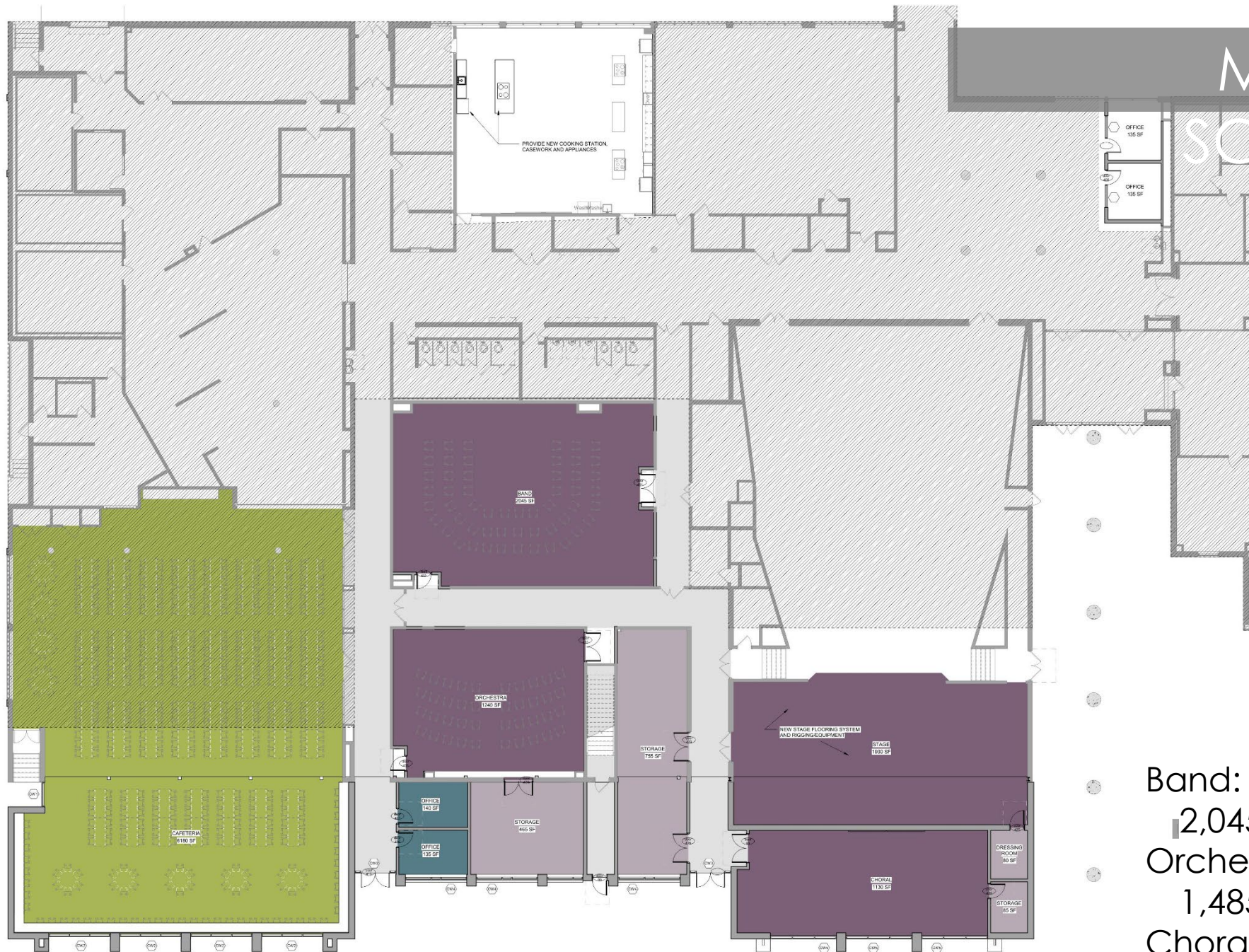
04 DESIGN DEVELOPMENT COST ESTIMATE

05 SCHEDULE & PHASING

# MIDDLE



# MIDDLE



Band: 1,655sf >  
2,045sf  
Orchestra: n/a >  
1,485sf  
Choral: 1,045sf >  
1,190sf

# MIDDLE SCHOOL



# MIDDLE SCHOOL

# MIDDLE SCHOOL



# DISCUSSION

01 MIDDLE SCHOOL UPDATE

02 HIGH SCHOOL UPDATE

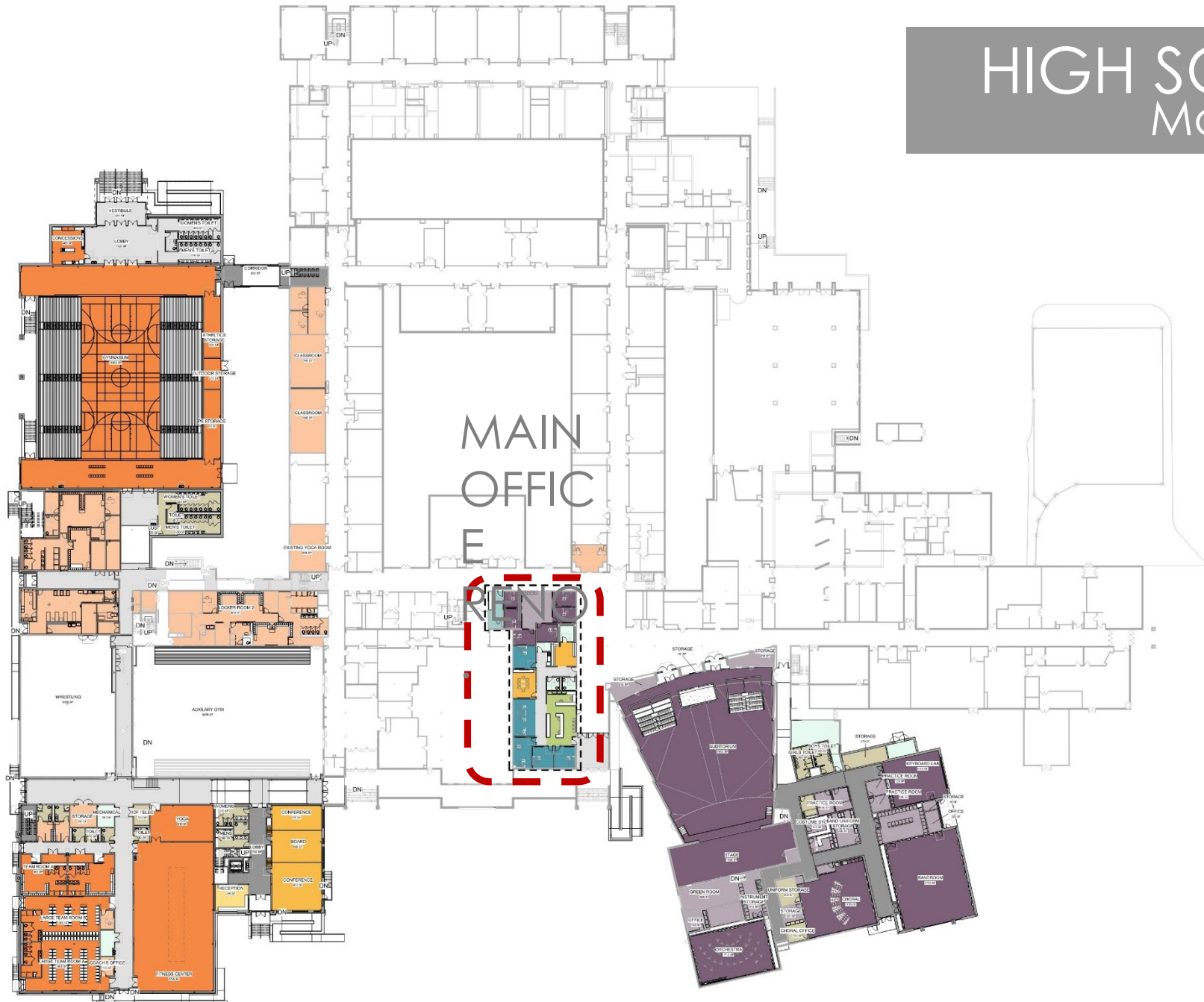
03 SITE CONCEPT REVIEW

04 DESIGN DEVELOPMENT COST ESTIMATE

05 SCHEDULE & PHASING



# HIGH SCHOOL Main Office



# HIGH SCHOOL Main Office



# HIGH SCHOOL Performing Arts

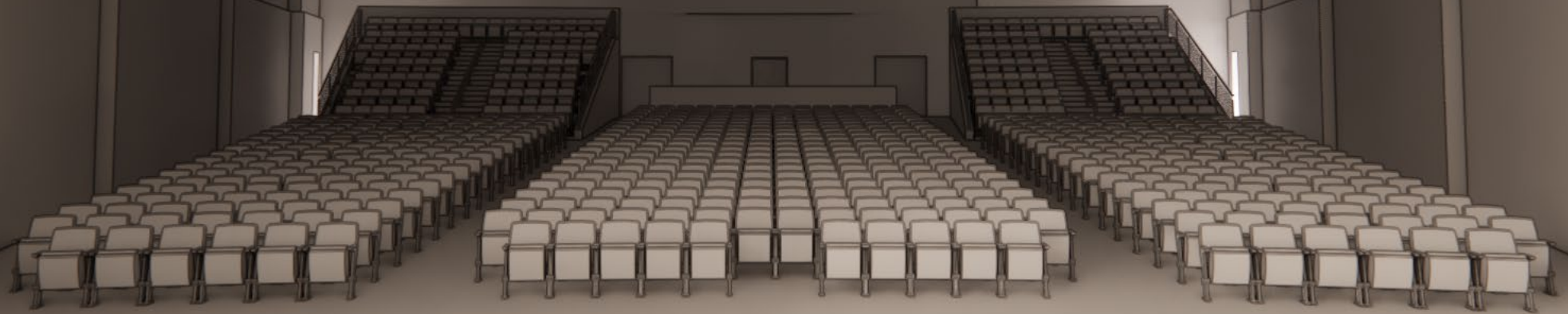


PERFORMING ARTS /  
MUSIC  
CLASSROOM

# HIGH SCHOOL Performing Arts



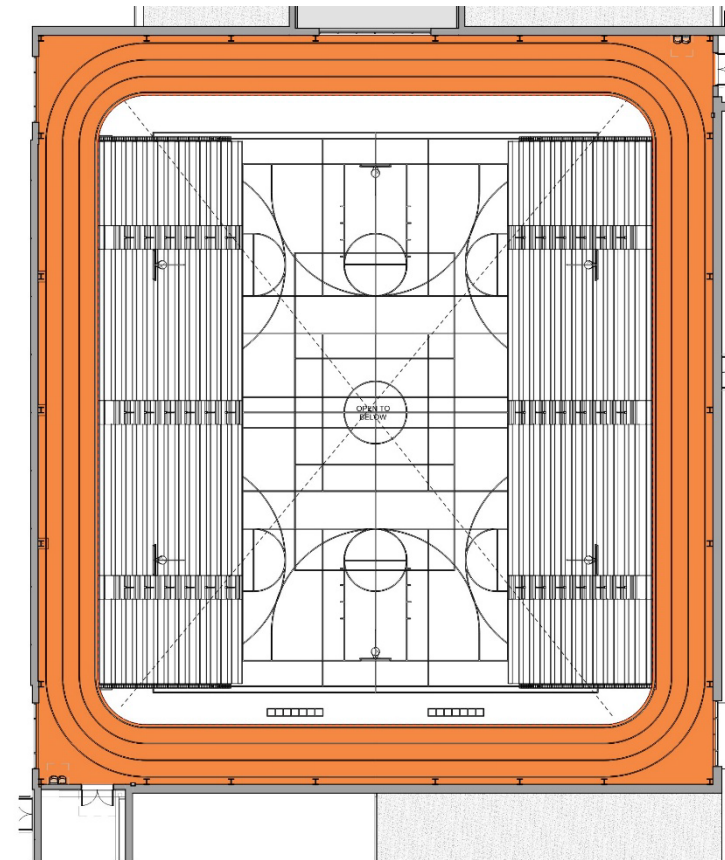
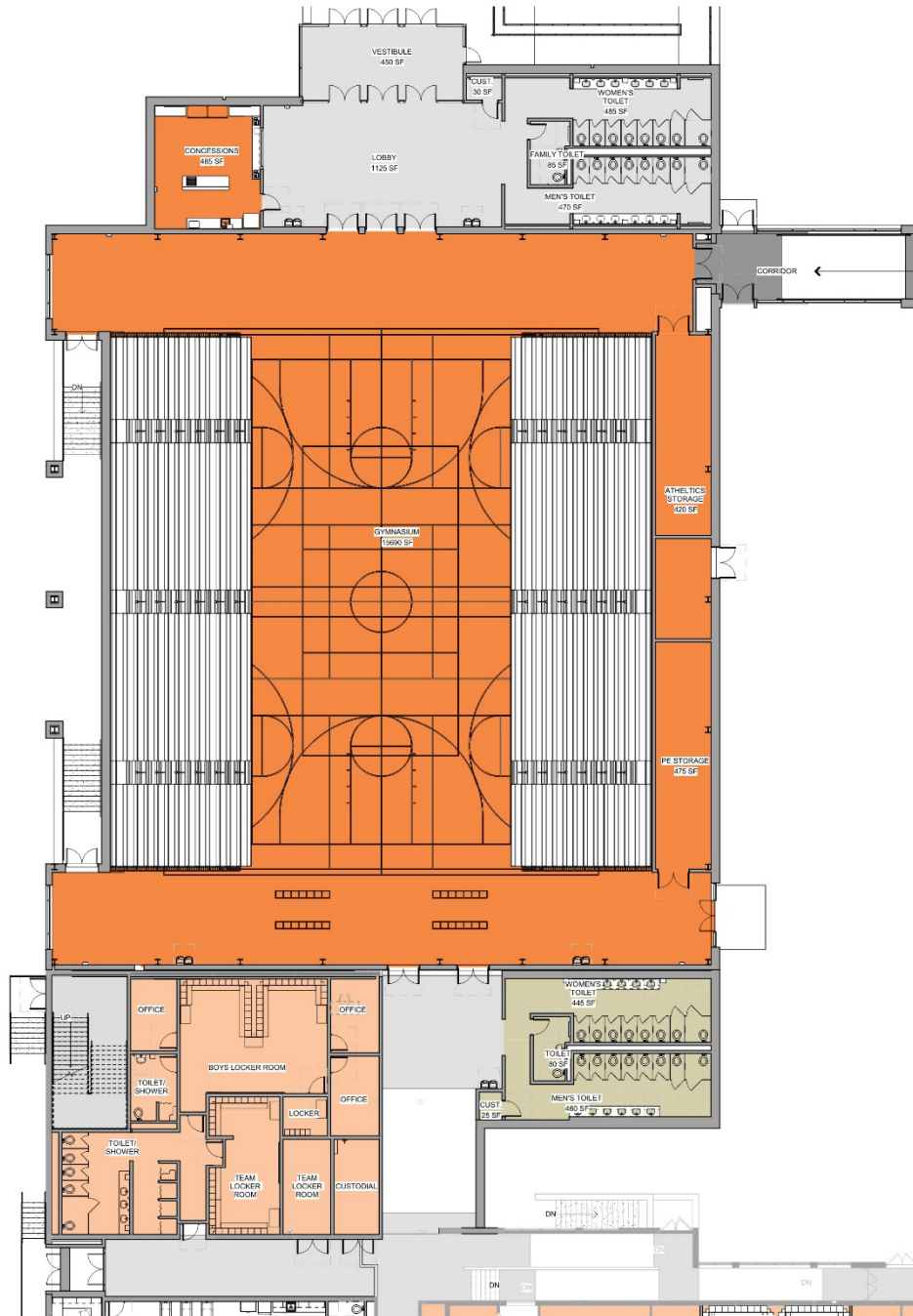
HIGH SCHOOL



# HIGH SCHOOL Athletics & PE

PHYSICAL  
EDUCATIO  
N /  
ATHLETIC  
IMPROVEM  
ENTS





HIGH SCHOOL  
Athletics & PE



# HIGH SCHOOL District



DISTRICT  
ADMINISTRATION



FIRST FLOOR  
SECOND FLOOR

# EXTERIOR RENDERINGS



# HIGH SCHOOL



# HIGH SCHOOL



# HIGH SCHOOL



# DISCUSSION

01 MIDDLE SCHOOL UPDATE

02 HIGH SCHOOL UPDATE

03 SITE CONCEPT REVIEW

04 DESIGN DEVELOPMENT COST ESTIMATE

05 SCHEDULE & PHASING

# SITE CONCEPT



# SITE CONCEPT

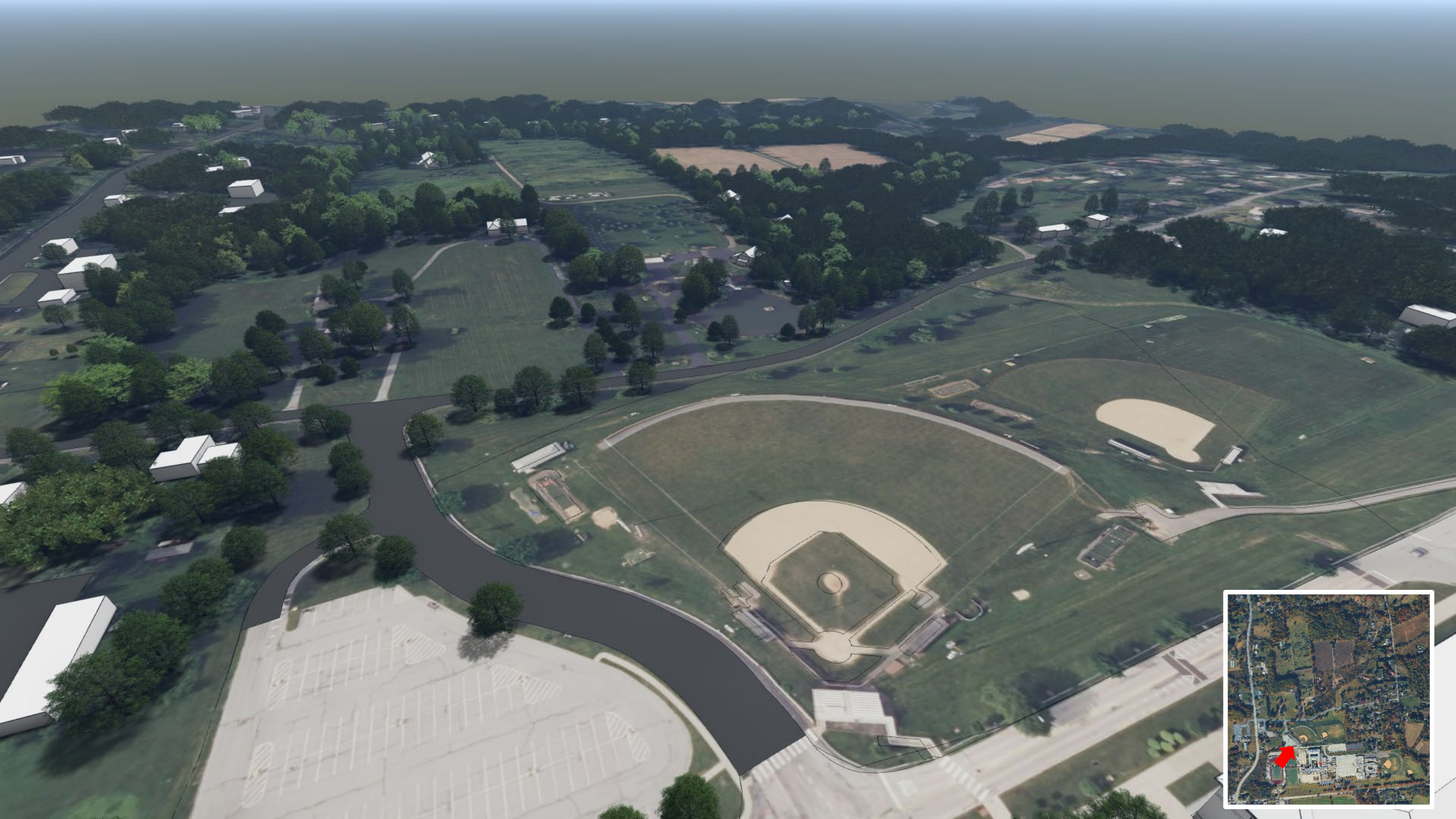
## Secondary Campus

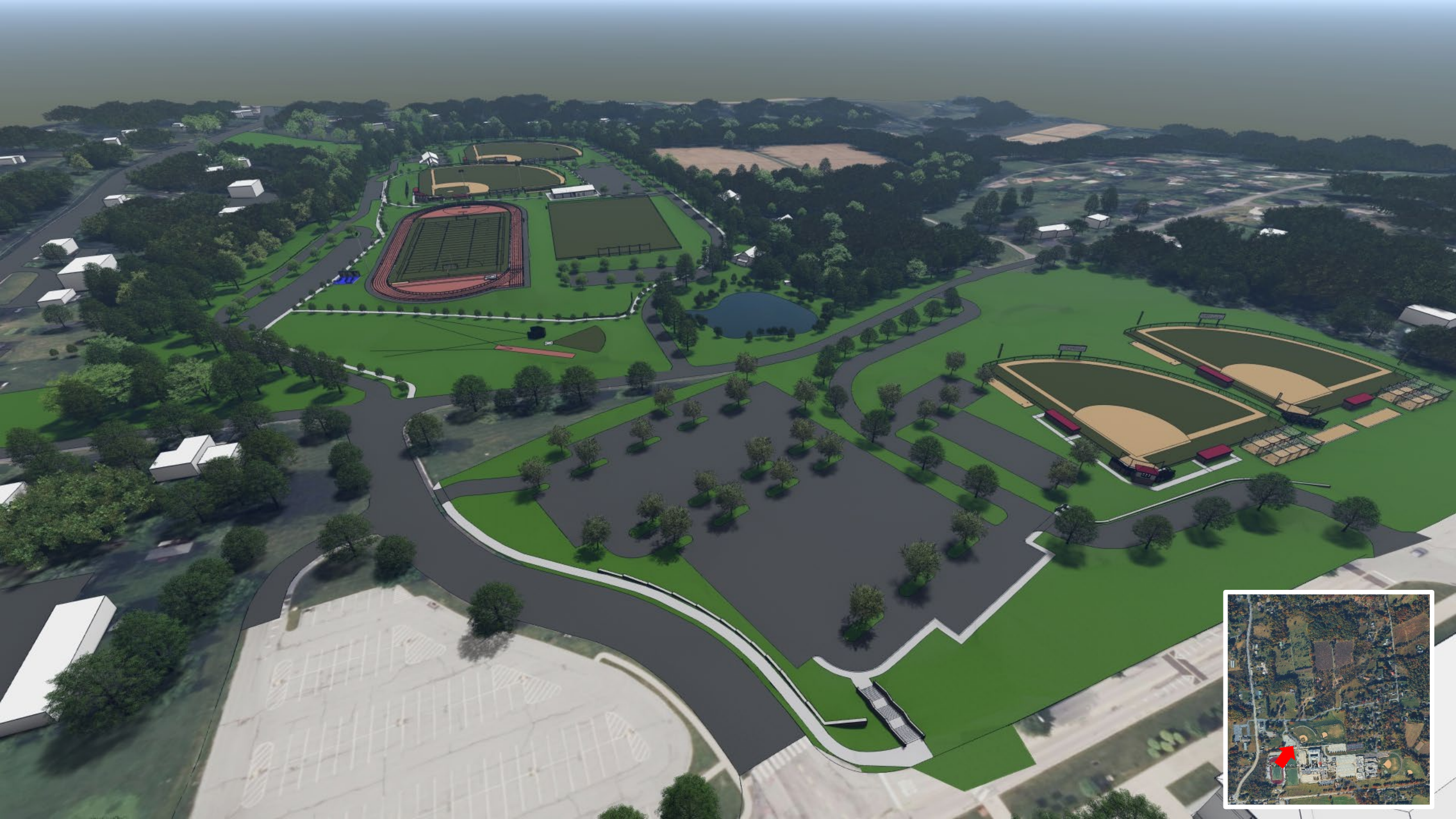


# SITE CONCEPT

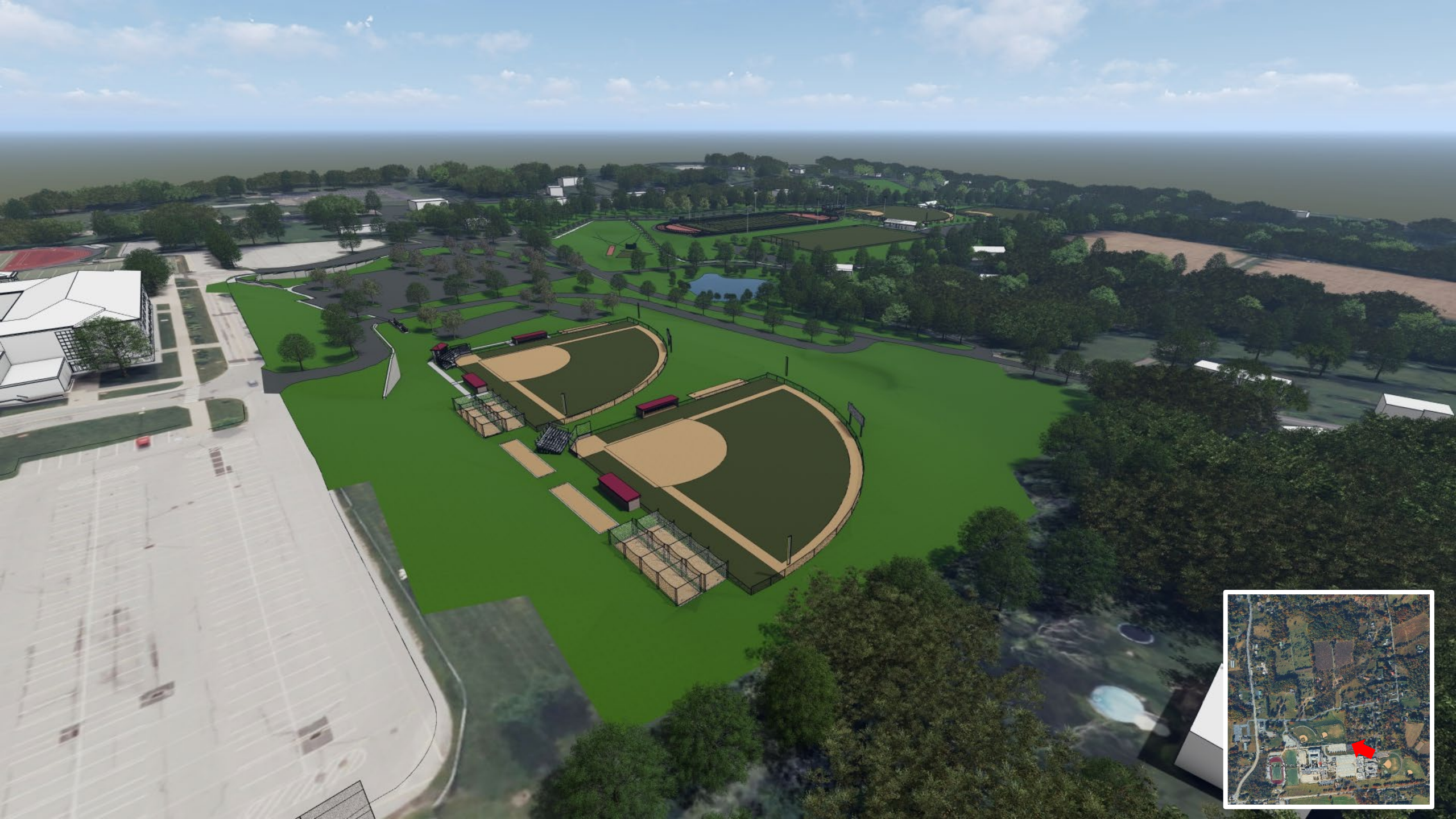
## Secondary Campus

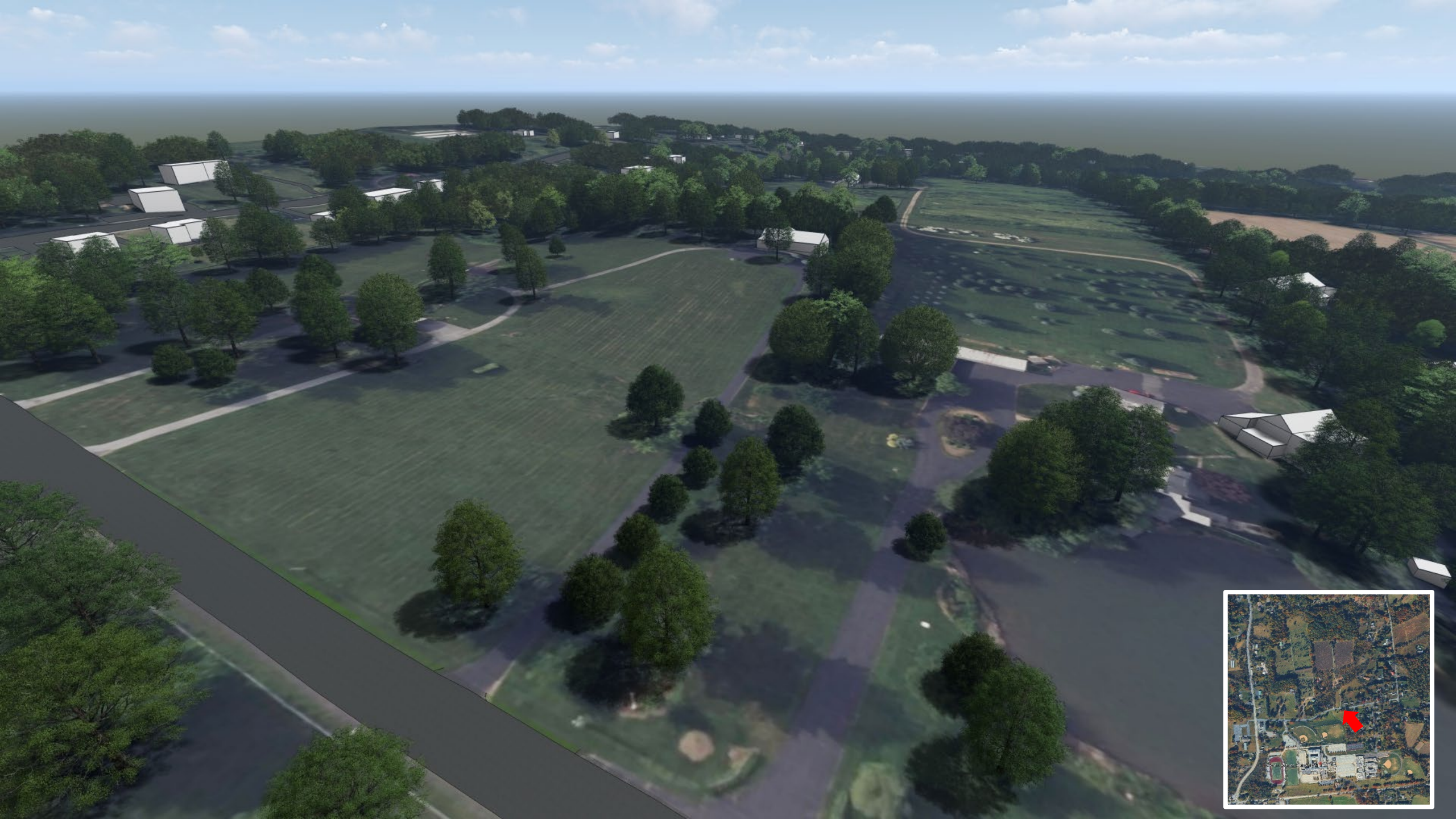


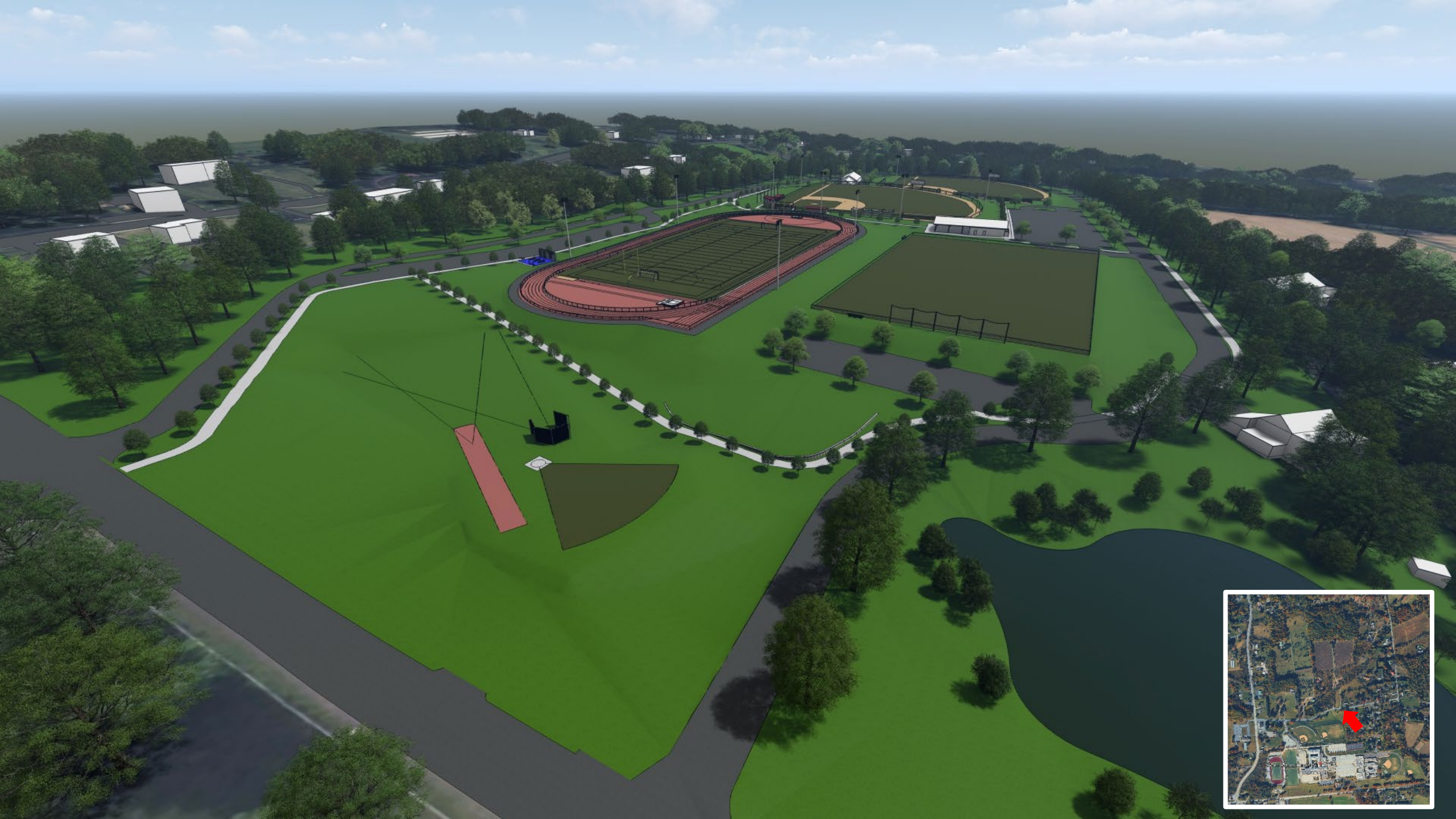




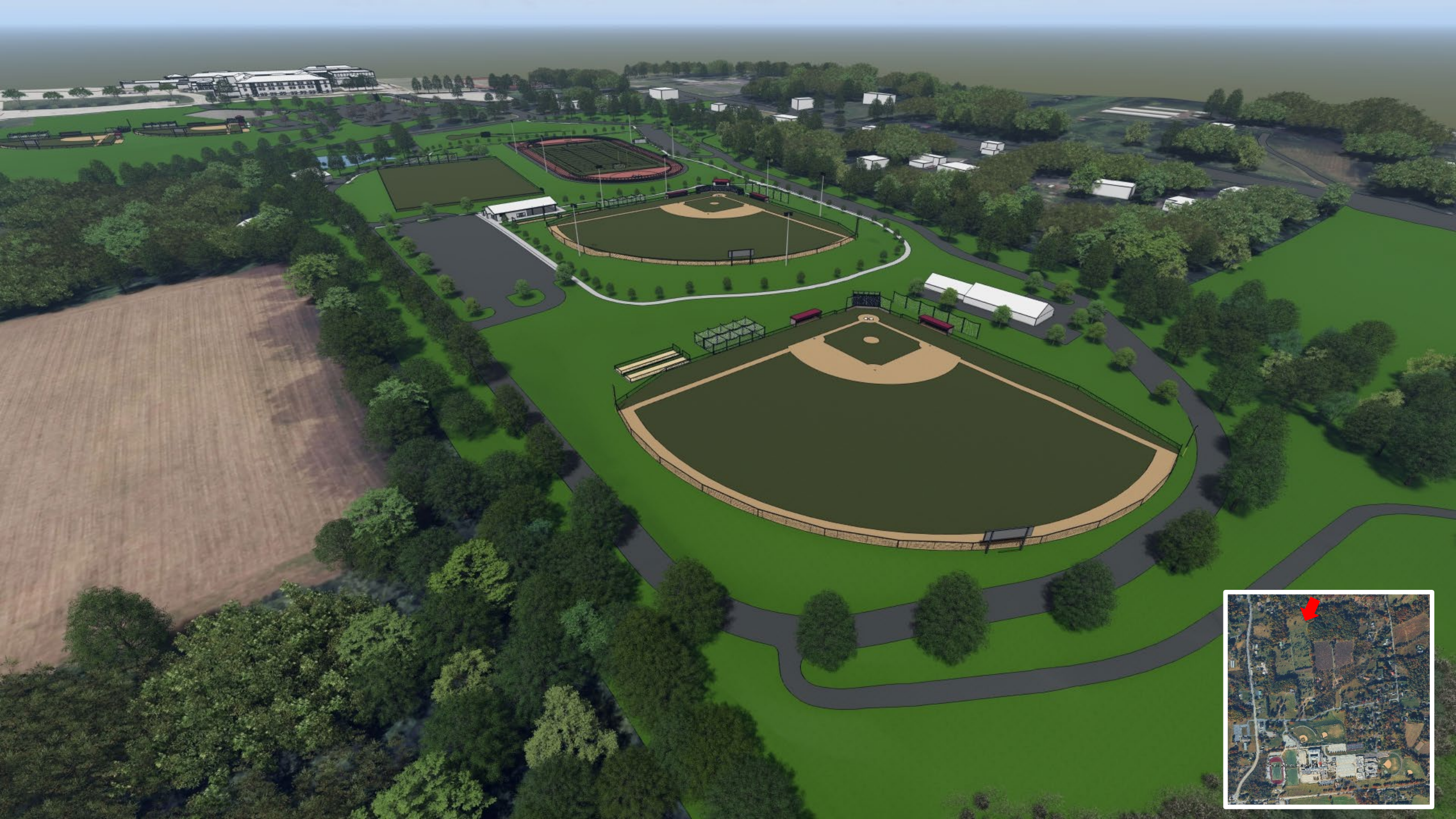








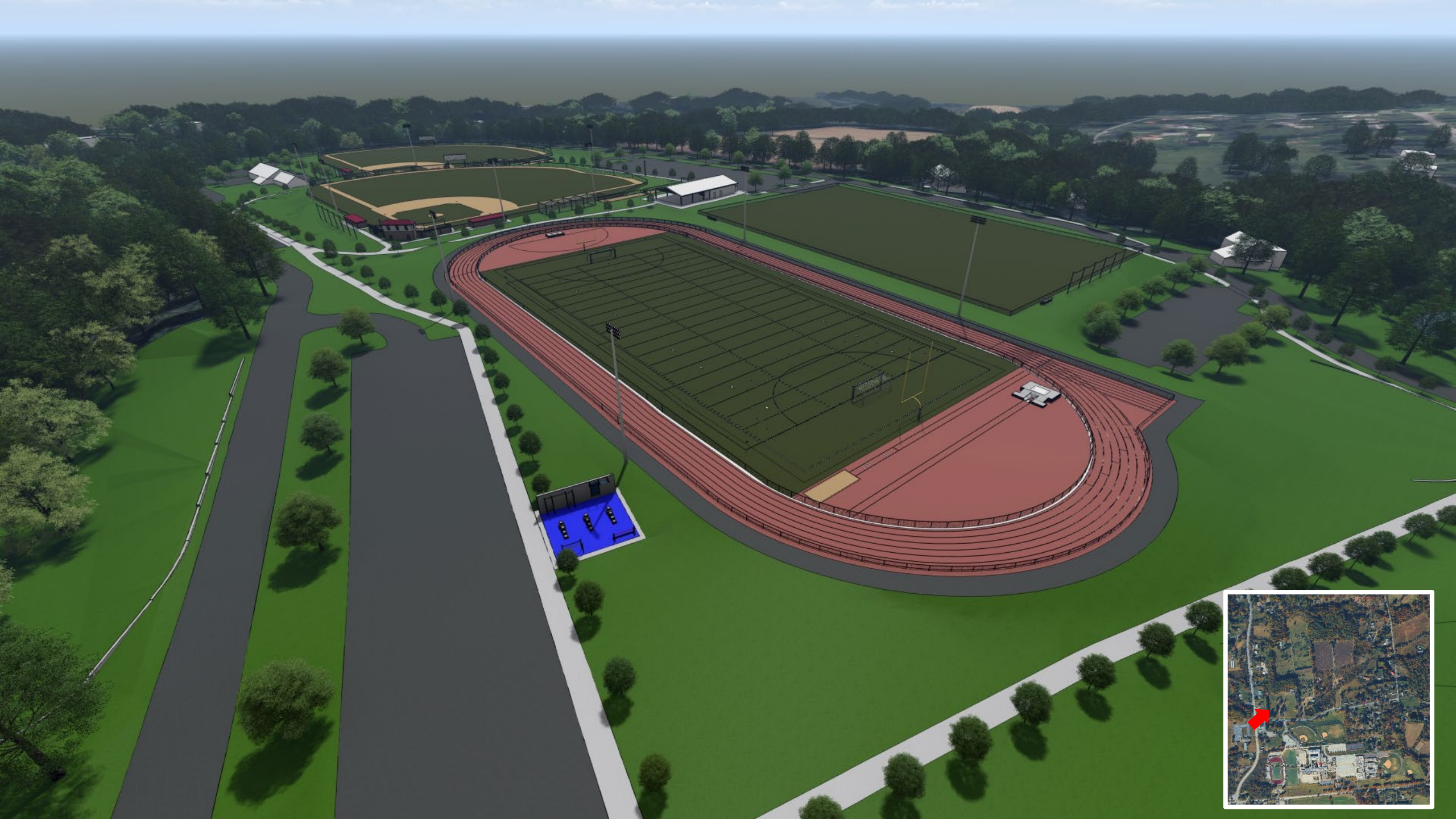


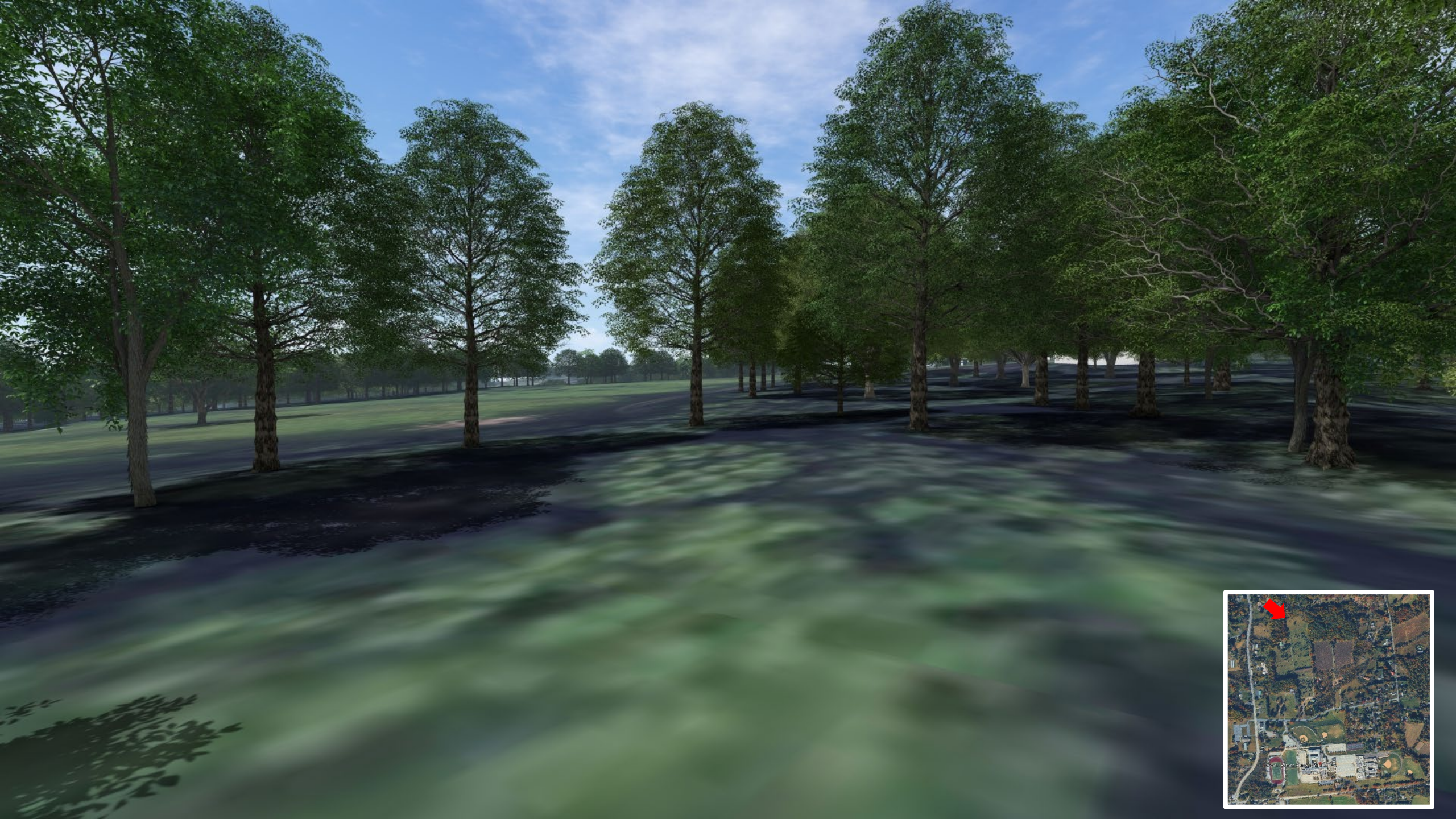


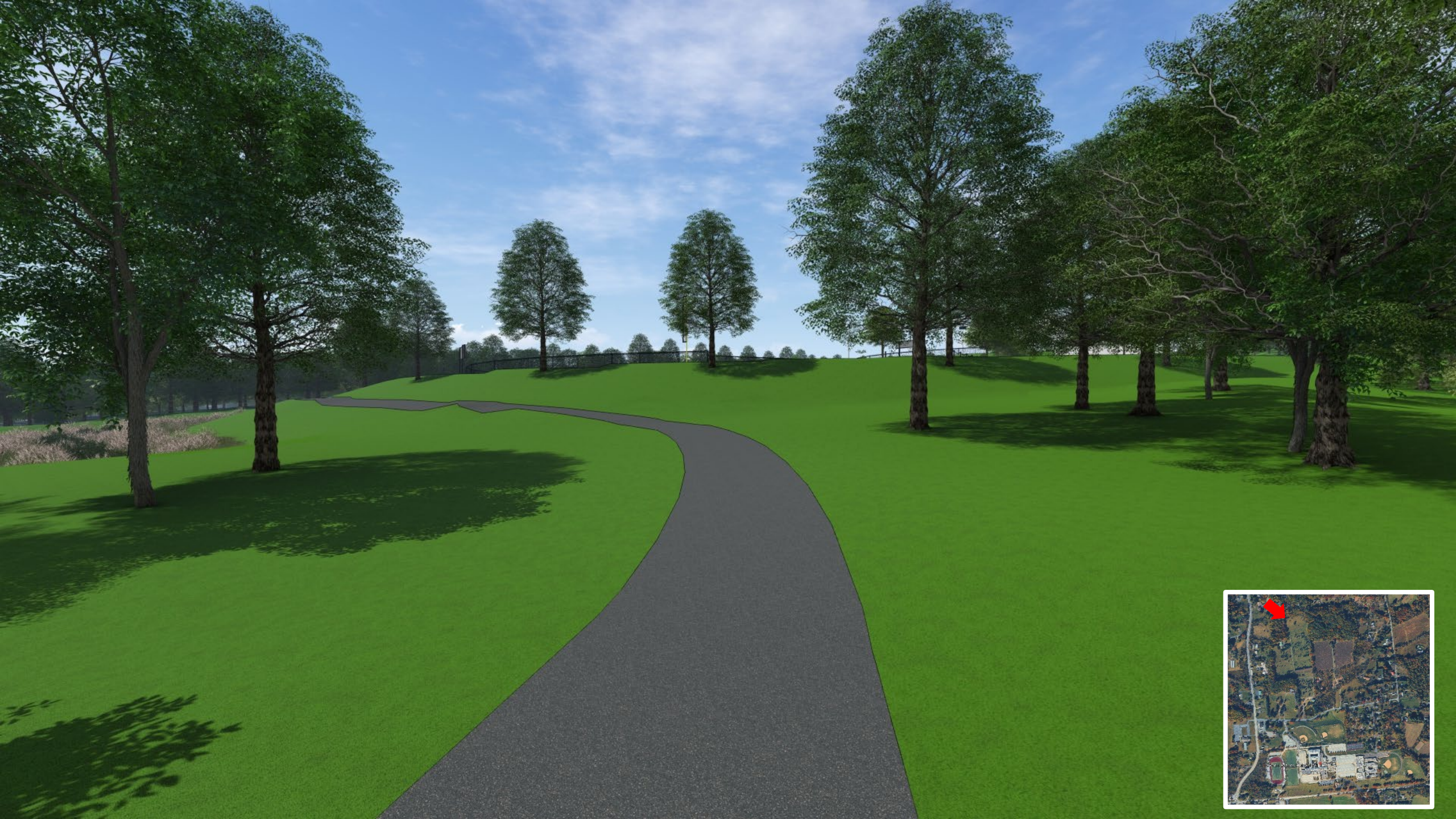






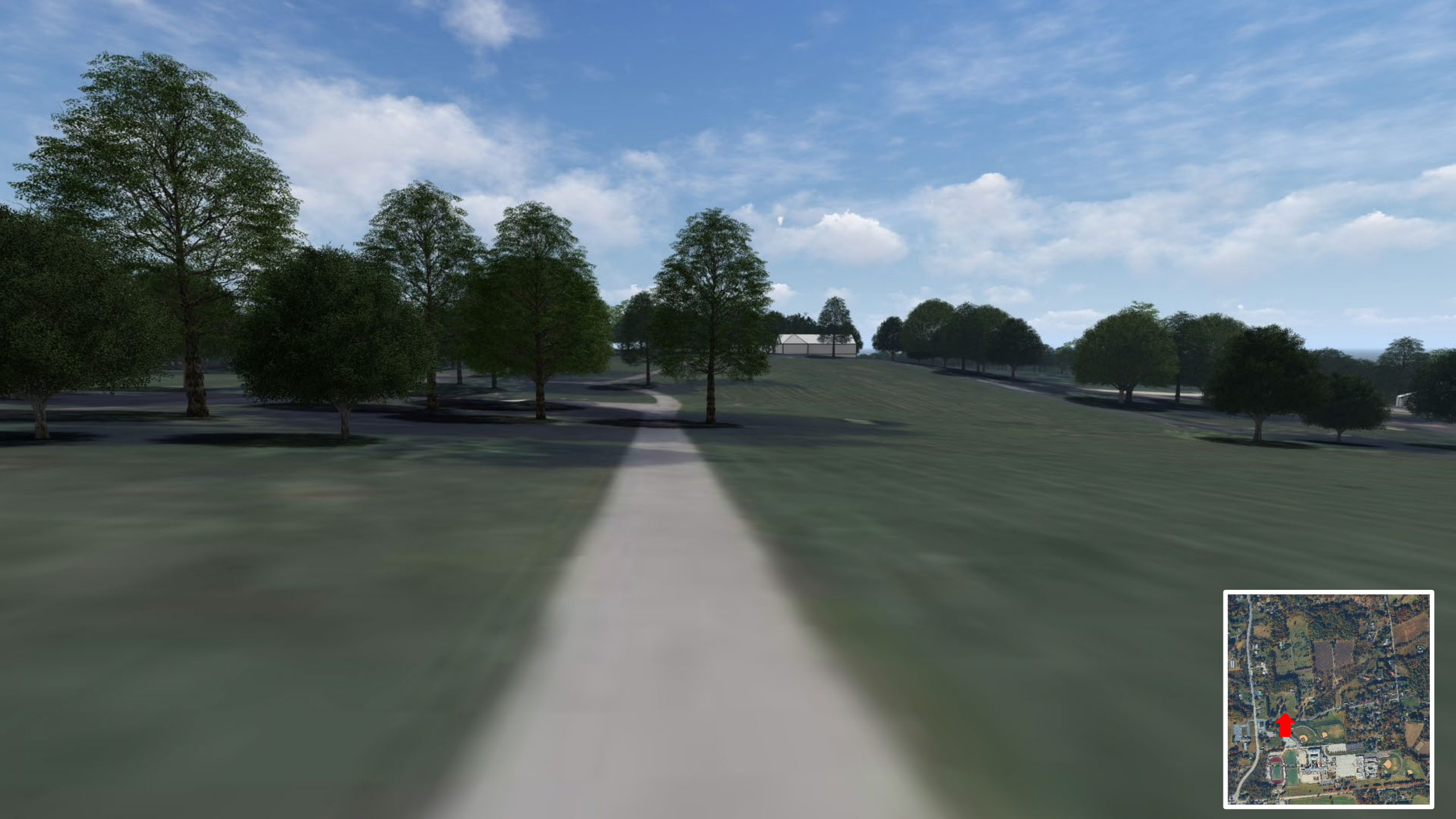


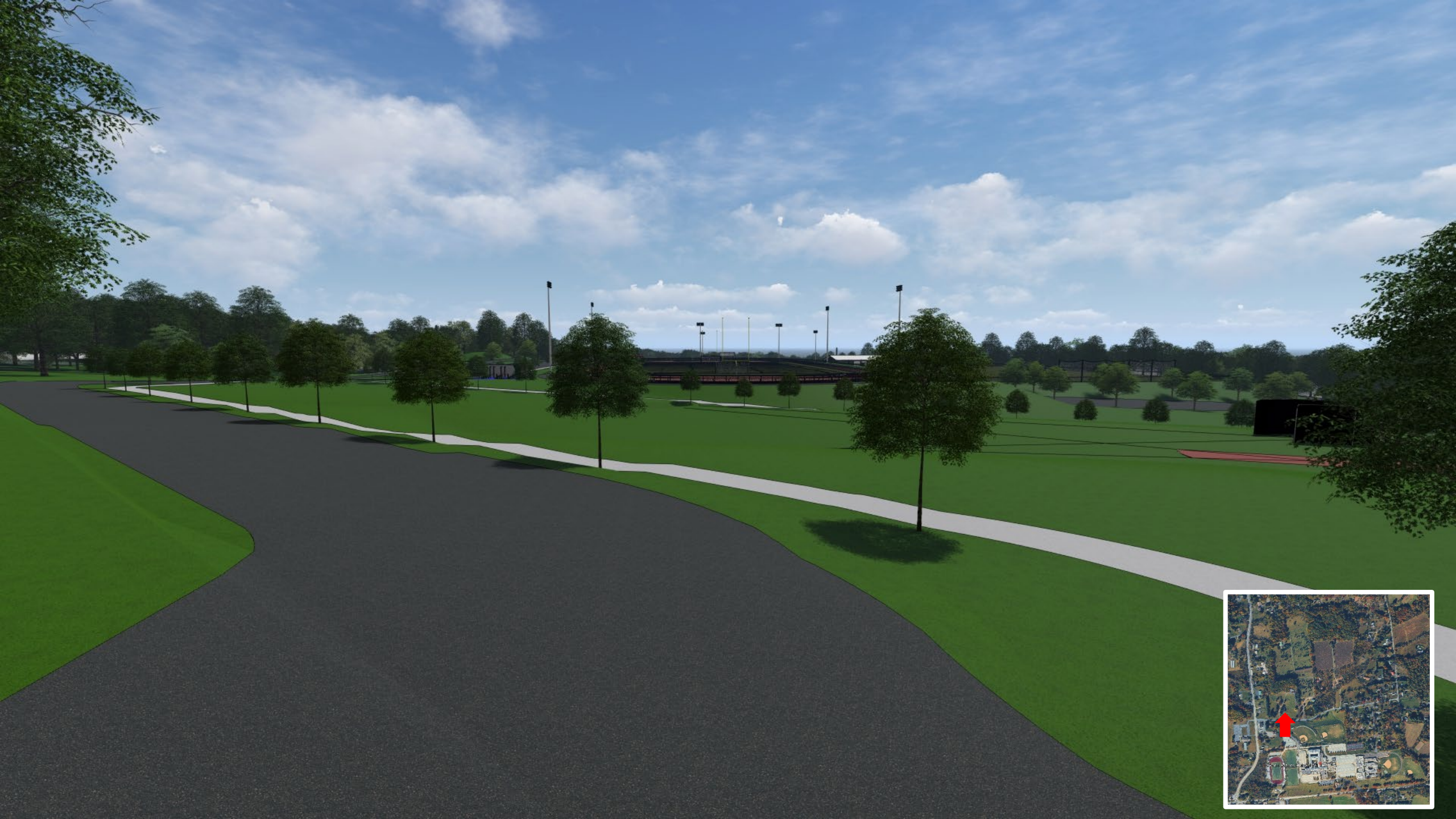




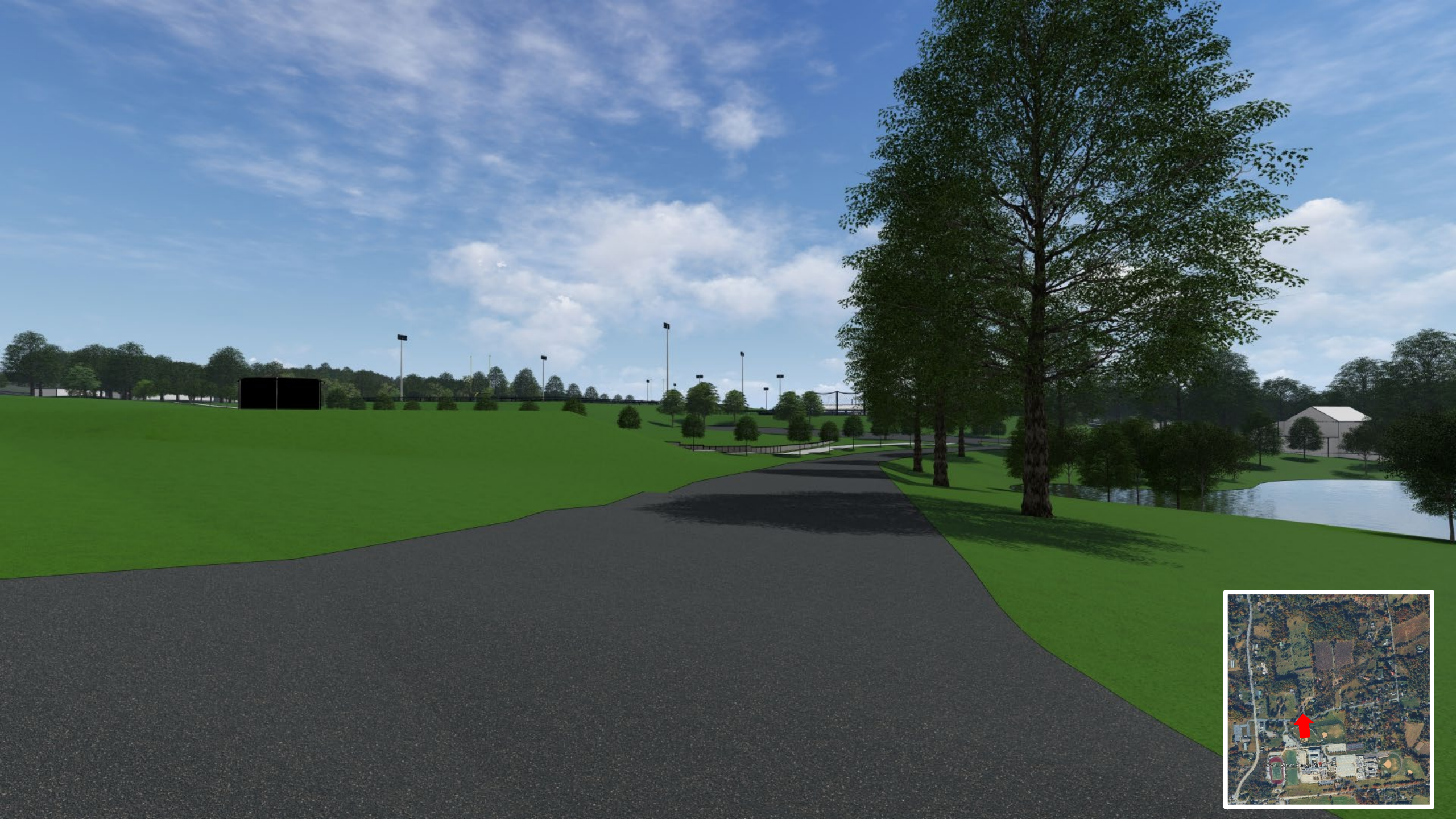




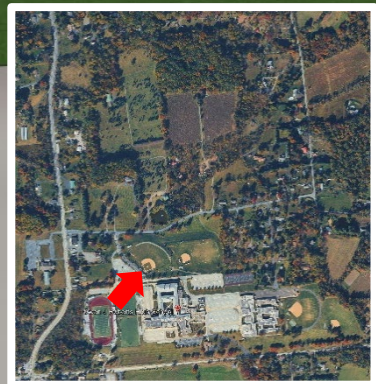
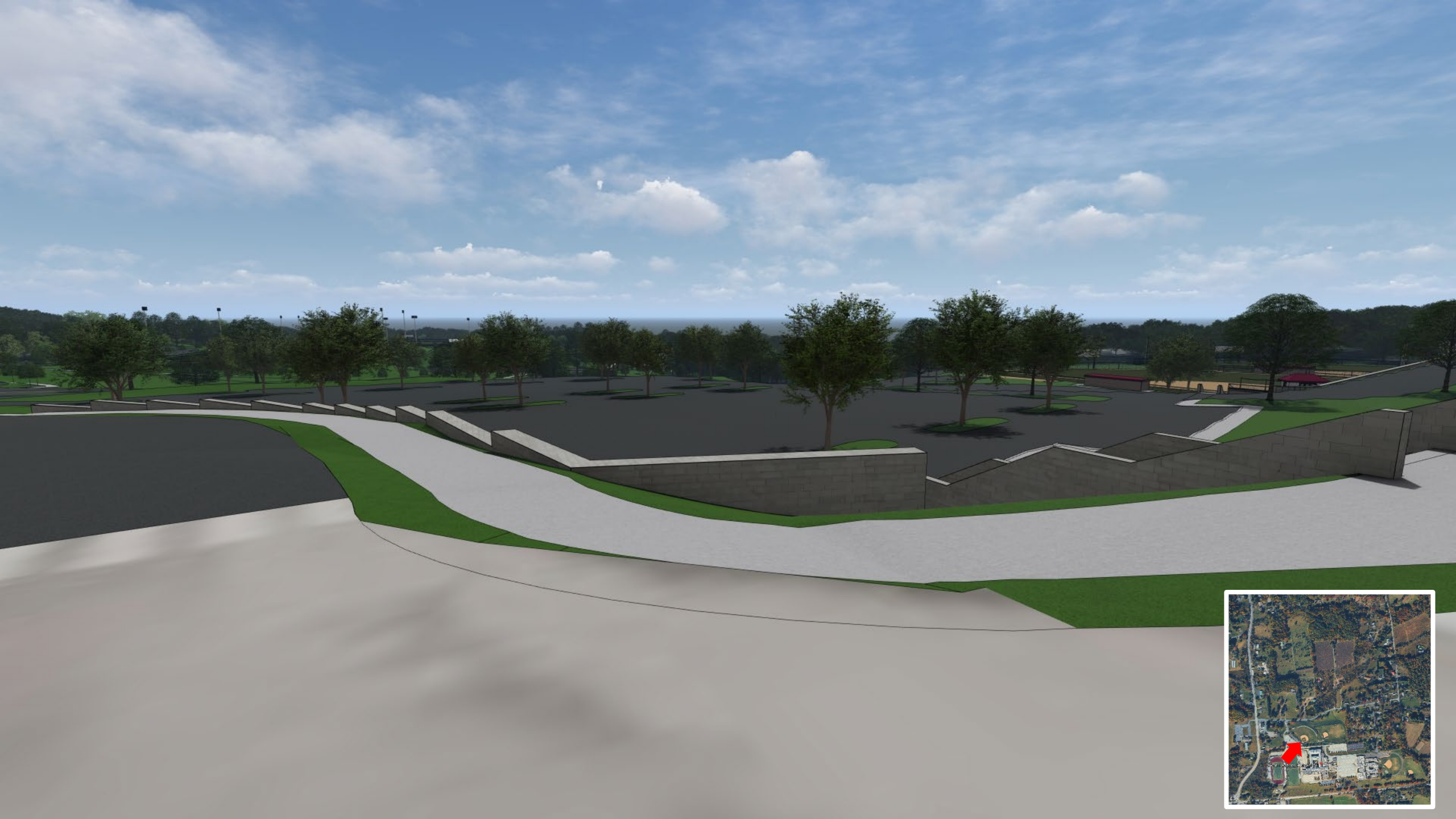












# DISCUSSION

01 MIDDLE SCHOOL UPDATE

02 HIGH SCHOOL UPDATE

03 SITE CONCEPT REVIEW

04 DESIGN DEVELOPMENT COST ESTIMATE

05 SCHEDULE & PHASING

# COST ESTIMATE

Design Development Estimate		Master Plan 2023	Master Plan Escalated @ 4%/yr. to 2027	Skanska SD Estimate	Skanska DD Estimate
01	Sitework	\$ 17,525,463	\$ 20,502,313	\$ 45,873,266	\$ 40,728,015
02	High School Auditorium Renovation & Addition	\$ 15,440,000	\$ 18,062,616	\$ 11,788,170	\$ 14,023,928
03	High School Existing Admin Renovation			\$ 2,254,535	\$ 2,876,238
04	High School Weight Room & District Admin Addition			\$ 21,881,898	\$ 22,566,856
05	High School Gymnasium Addition & Renovation			\$ 24,736,904	\$ 27,468,577
	<b>Athletic + District Admin Expansion</b>	<b>\$ 37,107,972</b>	<b>\$ 43,411,079</b>	<b>\$ 46,618,802</b>	<b>\$ 50,035,433</b>
08	High School HVAC Upgrades	\$ 14,500,000	\$ 16,962,949	\$ 22,176,202	\$ 21,055,706
08A	High School Sprinkler Head Replacement				\$ 941,206
09	High School MEP Infrastructure Upgrades			\$ 12,423,143	\$ 13,723,251
06/07	Middle School Additions & Renovations	\$ 3,704,136	\$ 4,333,315	\$ 8,728,970	\$ 8,708,502
07A	Middle School Rood Replacement	\$ 5,000,000	\$ 5,849,293	\$ 8,291,322	\$ 7,841,080
	<b>Total</b>	<b>\$ 93,277,571</b>	<b>\$ 109,121,565</b>	<b>\$ 158,154,410</b>	<b>\$ 159,933,359</b>
010	High School Roof Replacement				\$ 6,000,000

# COST DRIVERS

- Design & scope changes
- Escalation and market Conditions
- Logistics (Parking, Swing Space & Athletics)
- Phasing

# DISCUSSION

01 MIDDLE SCHOOL UPDATE

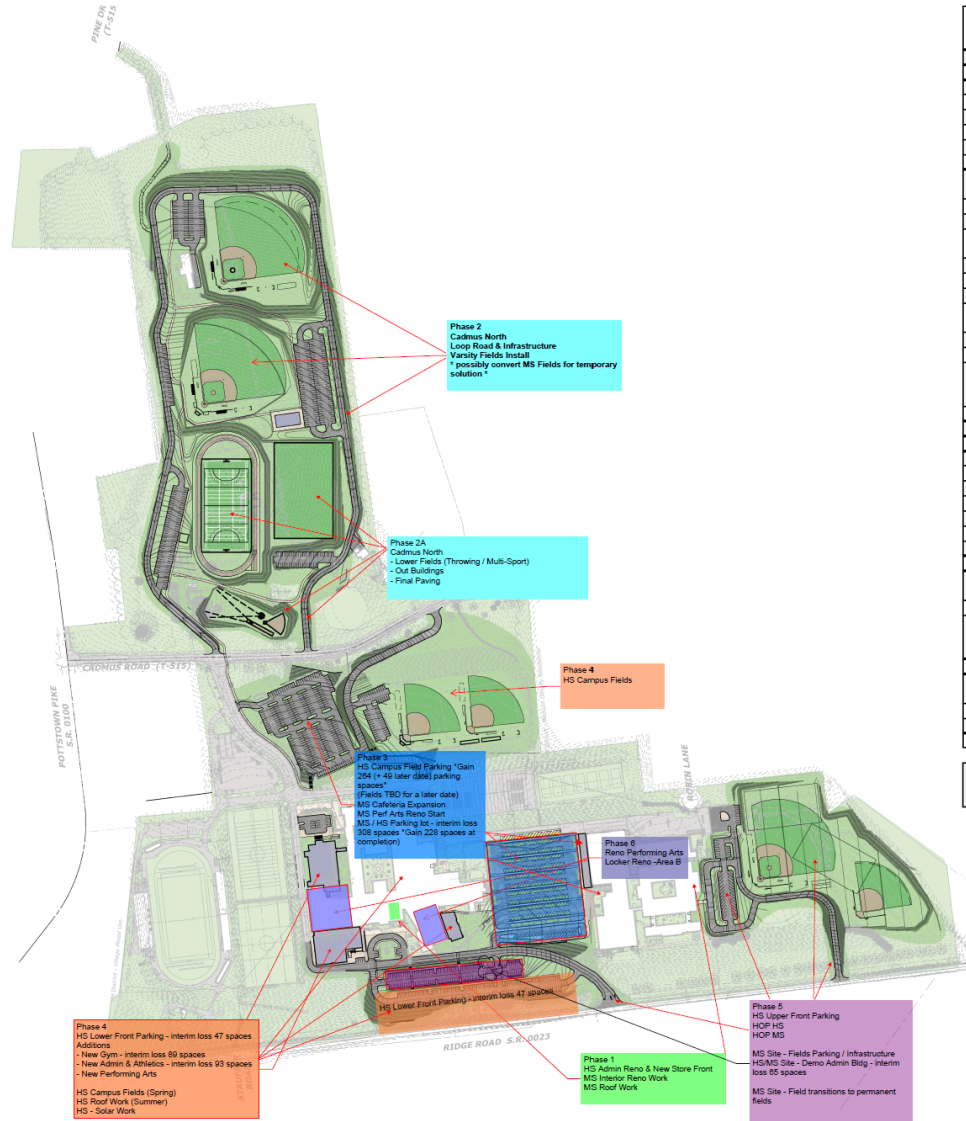
02 HIGH SCHOOL UPDATE

03 SITE CONCEPT REVIEW

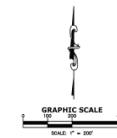
04 DESIGN DEVELOPMENT COST ESTIMATE

05 SCHEDULE & PHASING

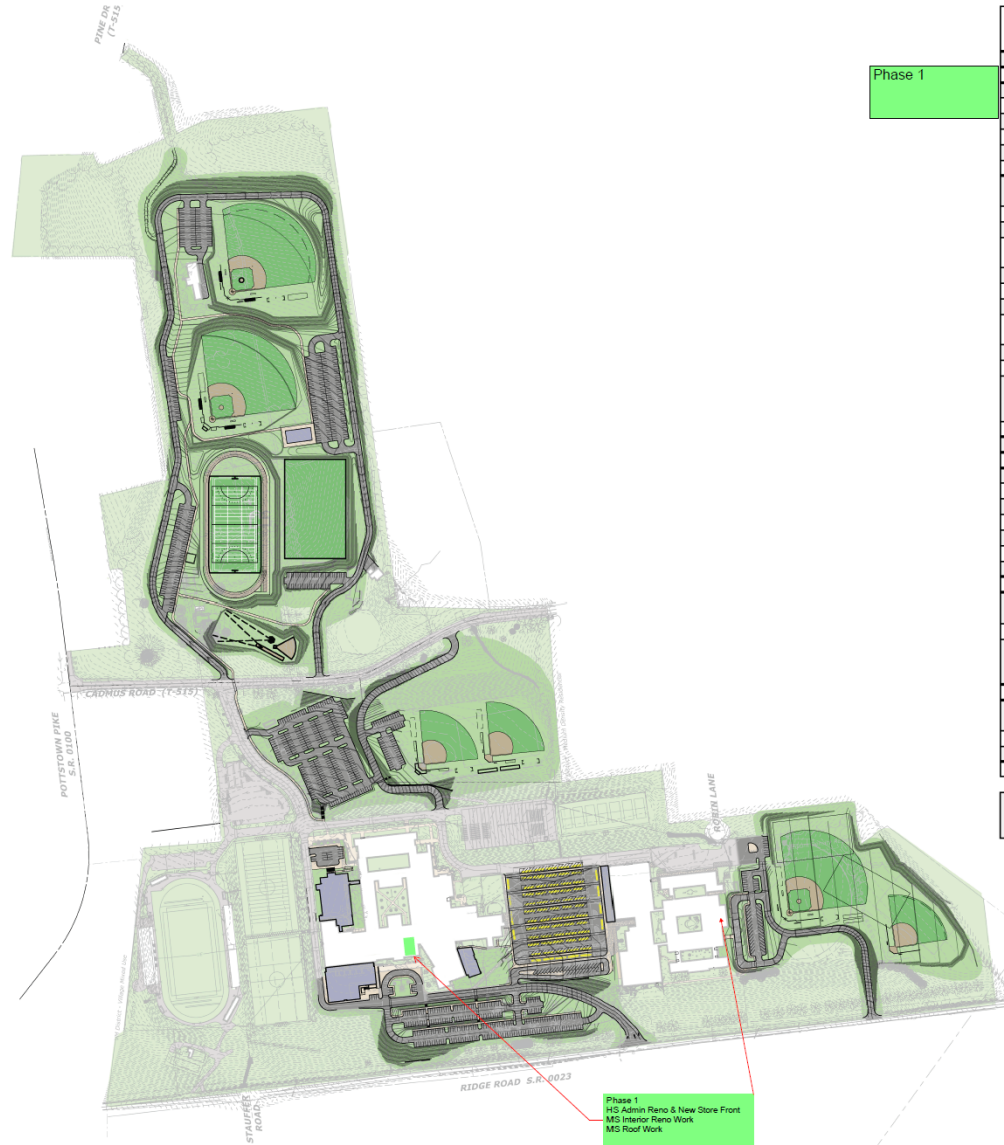
# PHASING - OVERALL APPROACH



	Existing Spaces	During Construction Loss	After Completion	Net Difference
<b>Phase 1 - Q2 2026 - Q4 2026</b>				
HS Admin Reno & New Store Front	N/A	N/A	N/A	
MS Interior Reno Work	N/A	N/A	N/A	
MS Roof Work (8 Solar)	N/A	N/A	N/A	
<b>Phase 2 - Q4 2026 - Q3 2027</b>				
<b>Cadmus North</b>				
- Loop Road & Infrastructure	Zero	Zero	253	+253
- Varsity Fields Install	Zero	Zero	Zero	
- (possibly convert MS Fields for temporary solution)	N/A	N/A	N/A	
<b>Phase 2A - Q4 2027 - Q4 2028</b>				
<b>Cadmus North</b>				
- Lower Fields (Throwing / Multi-Sport)	Zero	Zero	133	+133
- Out Buildings	N/A	N/A	N/A	
- Final Paving	N/A	N/A	N/A	
<b>Phase 3 - Q4 2027 - Q3 2028</b>				
HS Campus Field Parking (Fields TBD for a later date)	Zero	Zero	264	+264
MS Cafeteria Expansion	N/A	N/A	N/A	
MS Perf Arts Reno Start	N/A	N/A	N/A	
HS / MS Parking lot	308 Nighttime Spaces	308 Nighttime Spaces	228 Nighttime Spaces	
<b>Phase 4 - Q2 2028 - Q4 2029</b>				
HS Lower Front Parking	47	47	137	+90
<b>Additions</b>				
- New Gym	89	89	13	-76
- New Admin & Athletics	93	93	10	-83
- New Performing Arts	N/A	N/A	N/A	
HS Campus Fields (Spring)	Zero	Zero	49	+49
HS Roof Work (Summer)	N/A	N/A	N/A	
HS - Solar Work	N/A	N/A	N/A	
<b>Phase 5 - Q2 2029 - Q3 2030</b>				
HS Upper Front Parking (Summer)	134	65	92	-22
HOP HS - Widen Existing Driveway (Summer)	N/A	N/A	N/A	
HOP MS - New Road (Summer)	N/A	N/A	N/A	
MS Site - Fields Parking / Infrastructure	69	17(demo)	61 + 51 New spaces	+43
HS/MS Site - Demo Admin Bldg.	TBD	TBD	TBD	
MS Site - Field transitions to permanent fields				
<b>Phase 6 - Q2 2030 - Q3 2030</b>				
Reno Performing Arts	N/A	N/A	N/A	
Locker Reno - Area B	N/A	N/A	N/A	
<b>Ongoing Summer Work: Mechanical Work Areas F, G, H, J, - Infrastructure, equipment - affecting classrooms</b>				
	N/A	N/A	N/A	



# PHASE 1

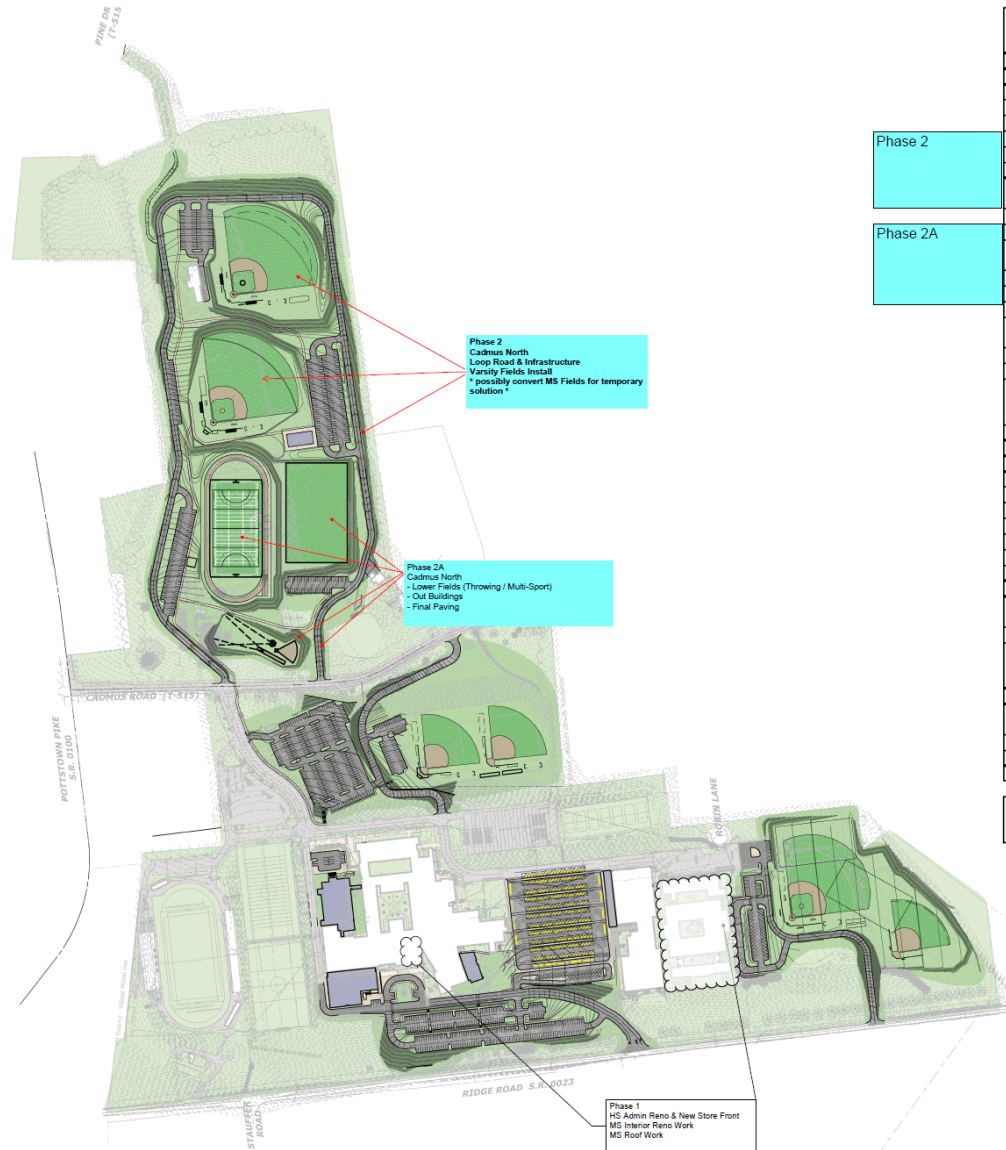


Phase 1

	Existing Spaces	During Construction Loss	After Completion	Net Difference
<b>Phase 1 - Q2 2026 - Q4 2026</b>				
HS Admin Reno & New Store Front	N/A	N/A	N/A	
MS Interior Reno Work	N/A	N/A	N/A	
MS Roof Work (8 Solar)	N/A	N/A	N/A	
<b>Phase 2 - Q4 2026 - Q3 2027</b>				
Cadmus North	Zero	Zero	Zero	
- Loop Road & Infrastructure	Zero	Zero	253	+253
- Varsity Fields Install	Zero	Zero	Zero	
- (possibly convert MS Fields for temporary solution)	N/A	N/A	N/A	
<b>Phase 2A - Q4 2027 - Q4 2028</b>				
Cadmus North				
- Lower Fields (Throwing / Multi-Sport)	Zero	Zero	133	+133
- Out Buildings	N/A	N/A	N/A	
- Final Paving	N/A	N/A	N/A	
<b>Phase 3 - Q4 2027 - Q3 2028</b>				
HS Campus Field Parking (Fields TBD for a later date)	Zero	Zero	264	+264
MS Cafeteria Expansion	N/A	N/A	N/A	
MS Perf Arts Reno Start	N/A	N/A	N/A	
HS / MS Parking lot	308 Nighttime Spaces	308 Nighttime Spaces	228 Nighttime Spaces	
<b>Phase 4 - Q2 2028 - Q4 2029</b>				
HS Lower Front Parking	47	47	137	+90
<b>Additions</b>				
- New Gym	89	89	13	-76
- New Admin & Athletics	93	93	10	-83
- New Performing Arts	N/A	N/A	N/A	
HS Campus Fields (Spring)	Zero	Zero	49	+49
HS Roof Work (Summer)	N/A	N/A	N/A	
HS - Solar Work	N/A	N/A	N/A	
<b>Phase 5 - Q2 2029 - Q3 2030</b>				
HS Upper Front Parking (Summer)	114	65	92	-22
HOP HS - Widen Existing Driveway (Summer)	N/A	N/A	N/A	
HOP MS - New Road (Summer)	N/A	N/A	N/A	
MS Site - Fields Parking / Infrastructure	69	17(demo)	61 + 51 New spaces	+43
HS/MS Site - Demo Admin Bldg	TBD	TBD	TBD	
MS Site - Field transitions to permanent fields				
<b>Phase 6 - Q2 2030 - Q3 2030</b>				
Reno Performing Arts	N/A	N/A	N/A	
Locker Reno - Area B	N/A	N/A	N/A	
<b>Ongoing Summer Work: Mechanical Work Areas F, G, H, J, - Infrastructure, equipment - affecting classrooms</b>				
	N/A	N/A	N/A	



# PHASE 2



Phase 2

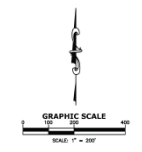
Phase 2A

Phase 2  
Cadmus North  
Loop Road & Infrastructure  
Varsity Fields Install  
\* possibly convert MS Fields for temporary solution \*

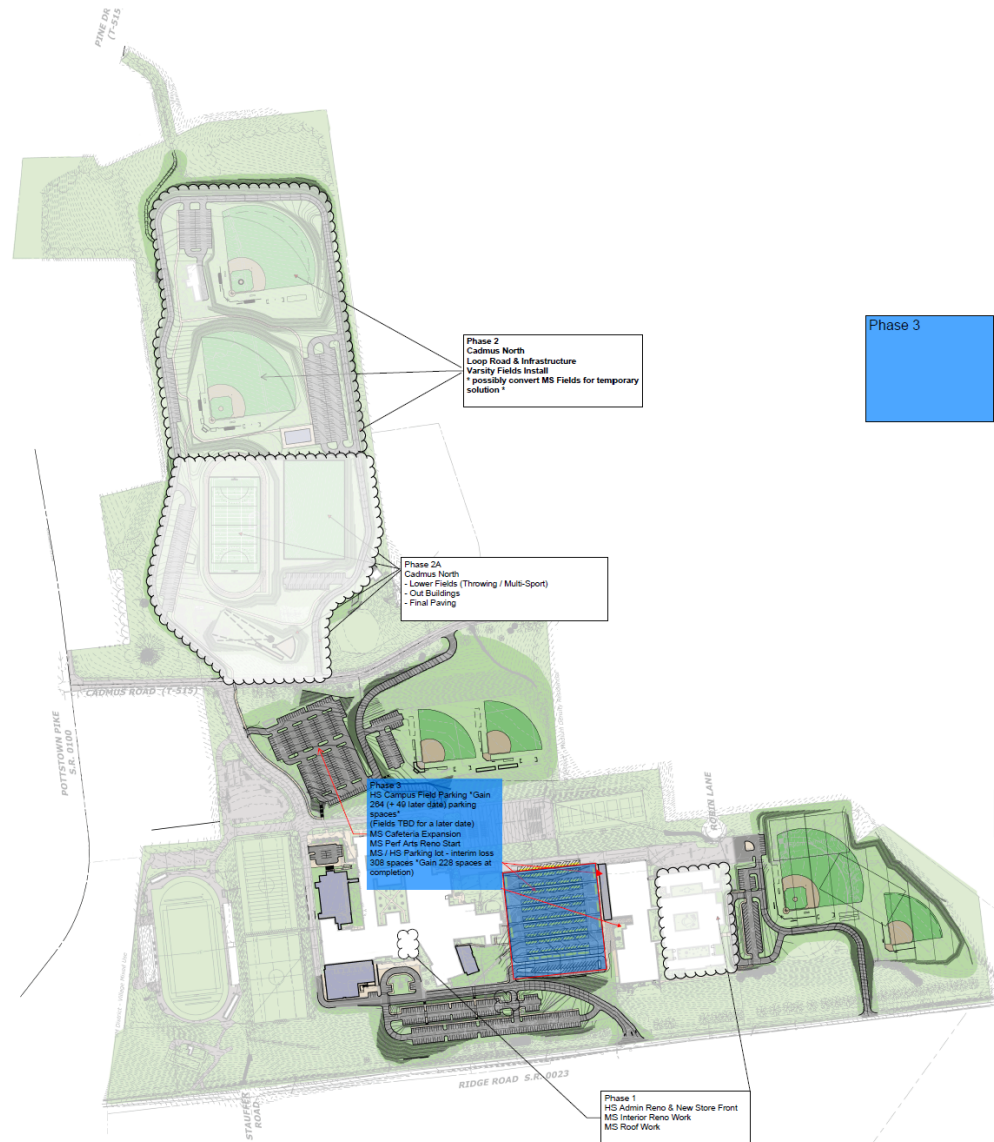
Phase 2A  
Cadmus North  
- Lower Fields (Throwing / Multi-Sport)  
- Out Buildings  
- Final Paving

Phase 1  
HS Admin Reno & New Store Front  
MS Interior Reno Work  
MS Roof Work

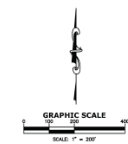
	Existing Spaces	During Construction Loss	After Completion	Net Difference
<b>Phase 1 - Q2 2026 - Q4 2026</b>				
HS Admin Reno & New Store Front	N/A	N/A	N/A	
MS Interior Reno Work	N/A	N/A	N/A	
MS Roof Work (& Solar)	N/A	N/A	N/A	
<b>Phase 2 - Q4 2026 - Q3 2027</b>				
<b>Cadmus North</b>	Zero	Zero	Zero	
- Loop Road & Infrastructure	Zero	Zero	253	+253
- Varsity Fields Install	Zero	Zero	Zero	
- (possibly convert MS Fields for temporary solution)	N/A	N/A	N/A	
<b>Phase 2A - Q4 2027 - Q4 2028</b>				
<b>Cadmus North</b>	Zero	Zero	133	+133
- Lower Fields (Throwing / Multi-Sport)	Zero	Zero	133	+133
- Out Buildings	N/A	N/A	N/A	
- Final Paving	N/A	N/A	N/A	
<b>Phase 3 - Q4 2027 - Q3 2028</b>				
HS Campus Field Parking (Fields TBD for a later date)	Zero	Zero	264	+264
MS Cafeteria Expansion	N/A	N/A	N/A	
MS Perf Arts Reno Start	N/A	N/A	N/A	
HS / MS Parking lot	308	308	228	
	Nighttime Spaces	Nighttime Spaces	Nighttime Spaces	
<b>Phase 4 - Q2 2028 - Q4 2029</b>				
HS Lower Front Parking	47	47	137	+90
<b>Additions</b>				
- New Gym	89	89	13	-76
- New Admin & Athletics	93	93	10	-83
- New Performing Arts	N/A	N/A	N/A	
HS Campus Fields (Spring)	Zero	Zero	49	+49
HS Roof Work (Summer)	N/A	N/A	N/A	
HS - Solar Work	N/A	N/A	N/A	
<b>Phase 5 - Q2 2029 - Q3 2030</b>				
HS Upper Front Parking (Summer)	114	65	92	-22
HOP HS - Widen Existing Driveway (Summer)	N/A	N/A	N/A	
HOP MS - New Road (Summer)	N/A	N/A	N/A	
MS Site - Fields Parking / Infrastructure	69	17(demo)	61 + 51 New spaces	+43
HS/MS Site - Demo Admin Bldg	TBD	TBD	TBD	
MS Site - Field transitions to permanent fields				
<b>Phase 6 - Q2 2030 - Q3 2030</b>				
Reno Performing Arts	N/A	N/A	N/A	
Locker Reno -Area B	N/A	N/A	N/A	
<b>Ongoing Summer Work: Mechanical Work Areas F, G, H, J, - infrastructure, equipment - affecting classrooms</b>				
	N/A	N/A	N/A	



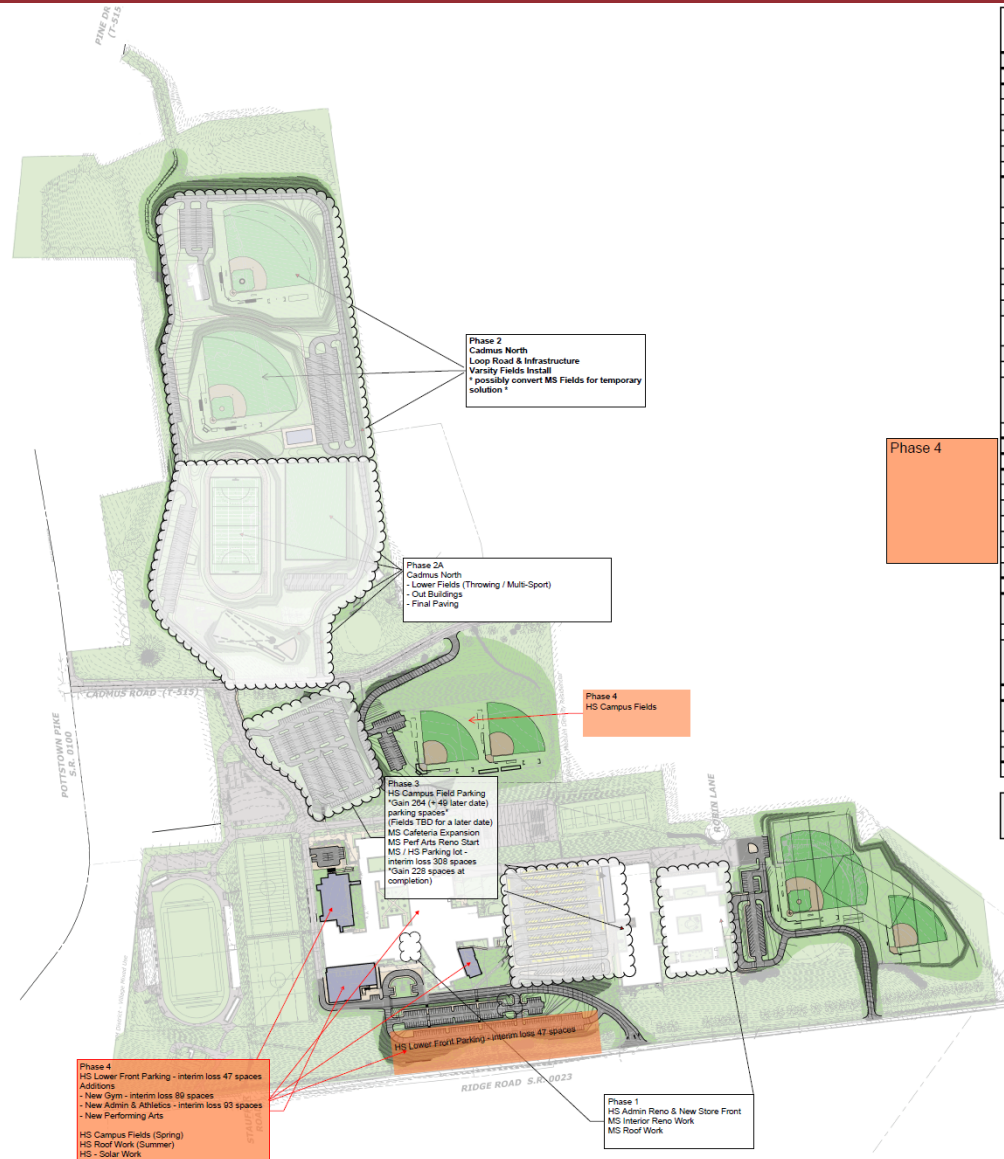
# PHASE 3



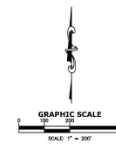
	Existing Spaces	During Construction Loss	After Completion	Net Difference
<b>Phase 1 - Q2 2026 - Q4 2026</b>				
HS Admin Reno & New Store Front	N/A	N/A	N/A	
MS Interior Reno Work	N/A	N/A	N/A	
MS Roof Work (& Solar)	N/A	N/A	N/A	
<b>Phase 2 - Q4 2026 - Q3 2027</b>				
<b>Cadmus North</b>	Zero	Zero	Zero	
- Loop Road & Infrastructure	Zero	Zero	253	+253
- Varsity Fields Install	Zero	Zero	Zero	
- (possibly convert MS Fields for temporary solution)	N/A	N/A	N/A	
<b>Phase 2A - Q4 2027 - Q4 2028</b>				
<b>Cadmus North</b>				
- Lower Fields (Throwing / Multi-Sport)	Zero	Zero	133	+133
- Out Buildings	N/A	N/A	N/A	
- Final Paving	N/A	N/A	N/A	
<b>Phase 3 - Q4 2027 - Q3 2028</b>				
HS Campus Field Parking (Fields TBD for a later date)	Zero	Zero	264	+264
MS Cafeteria Expansion	N/A	N/A	N/A	
MS Perf Arts Reno Start	N/A	N/A	N/A	
HS / MS Parking lot	308	308	228	
	Nighttime Spaces	Nighttime Spaces	Nighttime Spaces	
<b>Phase 4 - Q2 2028 - Q4 2029</b>				
HS Lower Front Parking Additions	47	47	137	+90
- New Gym	89	89	13	-76
- New Admin & Athletics	93	93	10	-83
- New Performing Arts	N/A	N/A	N/A	
HS Campus Fields (Spring)	Zero	Zero	49	+49
HS Roof Work (Summer)	N/A	N/A	N/A	
HS - Solar Work	N/A	N/A	N/A	
<b>Phase 5 - Q2 2029 - Q3 2030</b>				
HS Upper Front Parking (Summer)	114	65	92	-22
HOP HS - Widen Existing Driveway (Summer)	N/A	N/A	N/A	
HOP MS - New Road (Summer)	N/A	N/A	N/A	
MS Site - Fields Parking / Infrastructure	69	17(demo)	61 + 51 New spaces	+43
HS/MS Site - Demo Admin Bldg.	TBD	TBD	TBD	
MS Site - Field transitions to permanent fields				
<b>Phase 6 - Q2 2030 - Q3 2030</b>				
Reno Performing Arts	N/A	N/A	N/A	
Locker Reno - Area B	N/A	N/A	N/A	
<b>Ongoing Summer Work:</b> Mechanical Work Areas F, G, H, J, - infrastructure, equipment - affecting classrooms				
	N/A	N/A	N/A	



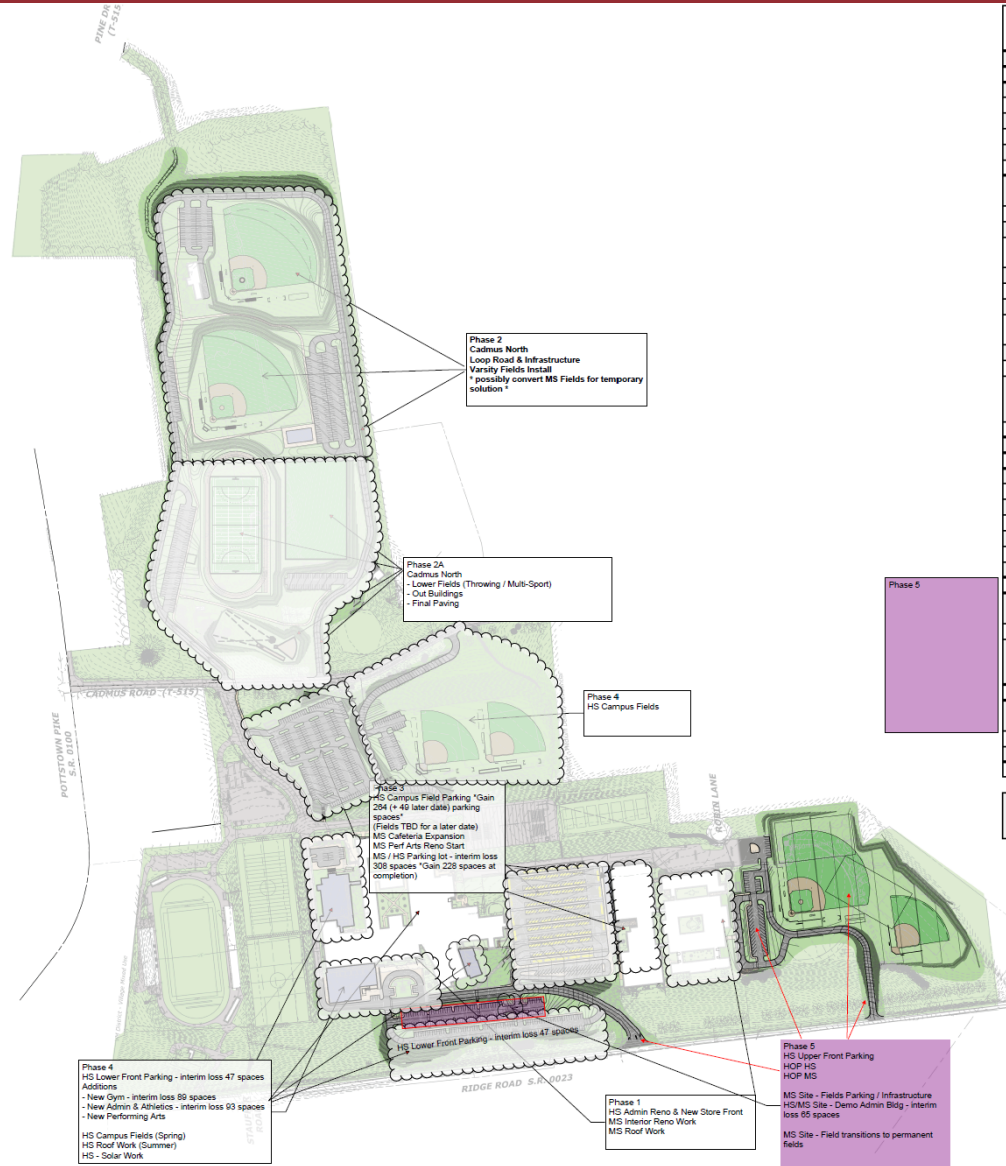
# PHASE 4



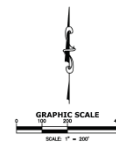
	Existing Spaces	During Construction Loss	After Completion	Net Difference
<b>Phase 1 - Q2 2026 - Q4 2026</b>				
HS Admin Reno & New Store Front	N/A	N/A	N/A	
MS Interior Reno Work	N/A	N/A	N/A	
MS Roof Work (8, Solar)	N/A	N/A	N/A	
<b>Phase 2 - Q4 2026 - Q3 2027</b>				
Cadmus North	Zero	Zero	Zero	
- Loop Road & Infrastructure	Zero	Zero	253	+253
- Varsity Fields Install	Zero	Zero	Zero	
- (possibly convert MS Fields for temporary solution)	N/A	N/A	N/A	
<b>Phase 2A - Q4 2027 - Q4 2028</b>				
Cadmus North				
- Lower Fields (Throwing / Multi-Sport)	Zero	Zero	133	+133
- Out Buildings	N/A	N/A	N/A	
- Final Paving	N/A	N/A	N/A	
<b>Phase 3 - Q4 2027 - Q3 2028</b>				
HS Campus Field Parking (Fields TBD for a later date)	Zero	Zero	264	+264
MS Cafeteria Expansion	N/A	N/A	N/A	
MS Perf Arts Reno Start	N/A	N/A	N/A	
HS / MS Parking lot	308	308	228	
	Nighttime Spaces	Nighttime Spaces	Nighttime Spaces	
<b>Phase 4 - Q2 2028 - Q4 2029</b>				
HS Lower Front Parking	47	47	137	+90
<b>Additions</b>				
- New Gym	89	89	13	-76
- New Admin & Athletics	93	93	10	-83
- New Performing Arts	N/A	N/A	N/A	
HS Campus Fields (Spring)	Zero	Zero	49	+49
HS Roof Work (Summer)	N/A	N/A	N/A	
HS - Solar Work	N/A	N/A	N/A	
<b>Phase 5 - Q2 2029 - Q3 2030</b>				
HS Upper Front Parking (Summer)	114	65	92	-22
HOP HS - Widen Existing Driveway (Summer)	N/A	N/A	N/A	
HOP MS - New Road (Summer)	N/A	N/A	N/A	
MS Site - Fields Parking / Infrastructure	69	17(demo)	61 + 51 New spaces	+43
HS/MS Site - Demo Admin Bldg	TBD	TBD	TBD	
MS Site - Field transitions to permanent fields				
<b>Phase 6 - Q2 2030 - Q3 2030</b>				
Reno Performing Arts	N/A	N/A	N/A	
Locker Reno - Area B	N/A	N/A	N/A	
<b>Ongoing Summer Work: Mechanical Work Areas F, G, H, J - Infrastructure, equipment - affecting classrooms</b>				
	N/A	N/A	N/A	



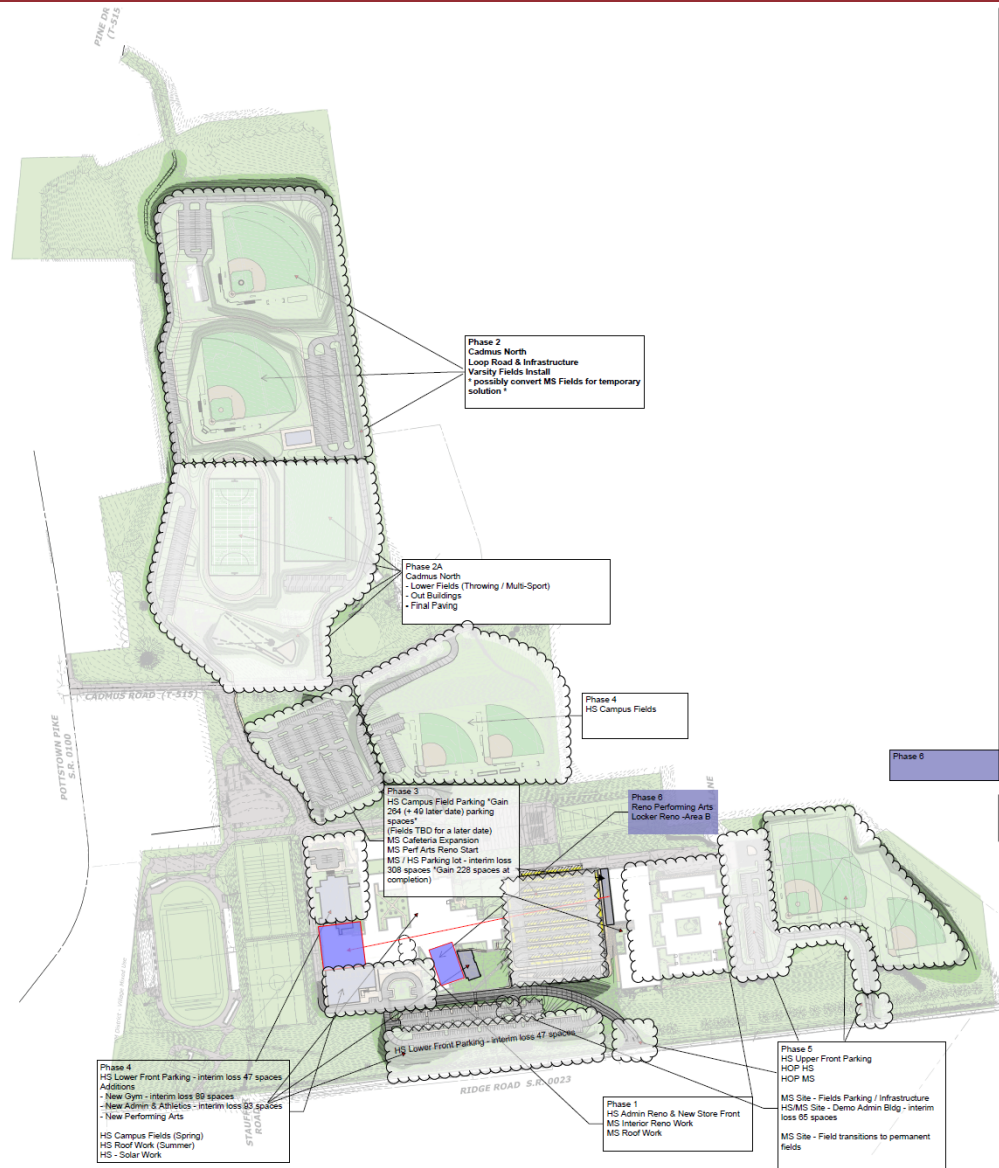
# PHASE 5



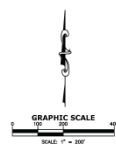
	Existing Spaces	During Construction Loss	After Completion	Net Difference
<b>Phase 1 - Q2 2026 - Q4 2026</b>				
HS Admin Reno & New Store Front	N/A	N/A	N/A	
MS Interior Reno Work	N/A	N/A	N/A	
MS Roof Work (8 Solar)	N/A	N/A	N/A	
<b>Phase 2 - Q4 2026 - Q3 2027</b>				
Cadmus North	Zero	Zero	Zero	
- Loop Road & Infrastructure	Zero	Zero	253	+253
- Varsity Fields Install	Zero	Zero	Zero	
- (possibly convert MS Fields for temporary solution)	N/A	N/A	N/A	
<b>Phase 2A - Q4 2027 - Q4 2028</b>				
Cadmus North				
- Lower Fields (Throwing / Multi-Sport)	Zero	Zero	133	+133
- Out Buildings	N/A	N/A	N/A	
- Final Paving	N/A	N/A	N/A	
<b>Phase 3 - Q4 2027 - Q3 2028</b>				
HS Campus Field Parking (Fields TBD for a later date)	Zero	Zero	264	+264
MS Cafeteria Expansion	N/A	N/A	N/A	
MS Perf Arts Reno Start	N/A	N/A	N/A	
HS / MS Parking lot	308 Nighttime Spaces	308 Nighttime Spaces	228 Nighttime Spaces	
<b>Phase 4 - Q2 2028 - Q4 2029</b>				
HS Lower Front Parking	47	47	137	+90
<b>Additions</b>				
- New Gym	89	89	13	-76
- New Admin & Athletics	93	93	10	-83
- New Performing Arts	N/A	N/A	N/A	
HS Campus Fields (Spring)	Zero	Zero	49	+49
HS Roof Work (Summer)	N/A	N/A	N/A	
HS - Solar Work	N/A	N/A	N/A	
<b>Phase 5 - Q2 2029 - Q3 2030</b>				
HS Upper Front Parking (Summer)	114	65	92	-22
HOP HS - Widen Existing Driveway (Summer)	N/A	N/A	N/A	
HOP MS - New Road (Summer)	N/A	N/A	N/A	
MS Site - Fields Parking / Infrastructure	69	17(demo)	61 + 51 New spaces	+43
HS/MS Site - Demo Admin Bldg.	TBD	TBD	TBD	
MS Site - Field transitions to permanent fields				
<b>Phase 6 - Q2 2030 - Q3 2030</b>				
Reno Performing Arts	N/A	N/A	N/A	
Locker Reno - Area B	N/A	N/A	N/A	
<b>Ongoing Summer Work: Mechanical Work Areas F, G, H, J, - infrastructure, equipment - affecting classrooms</b>				
	N/A	N/A	N/A	

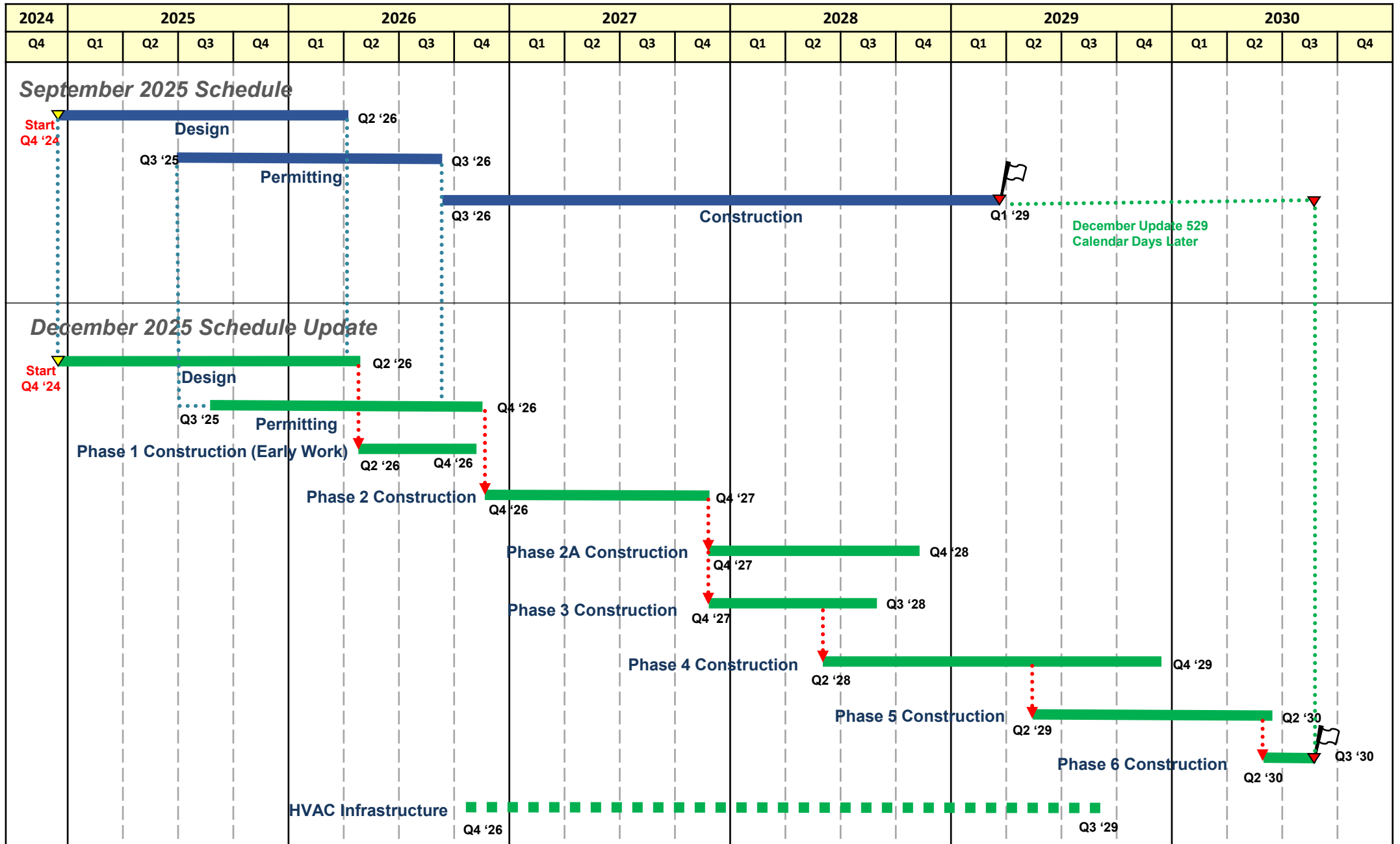


# PHASE 6



	Existing Spaces	During Construction Loss	After Completion	Net Difference
<b>Phase 1 - Q2 2026 - Q4 2026</b>				
HS Admin Reno & New Store Front	N/A	N/A	N/A	
MS Interior Reno Work	N/A	N/A	N/A	
MS Roof Work (Solar)	N/A	N/A	N/A	
<b>Phase 2 - Q4 2026 - Q3 2027</b>				
<b>Cadmus North</b>	Zero	Zero	Zero	
- Loop Road & Infrastructure	Zero	Zero	253	+253
- Varsity Fields Install	Zero	Zero	Zero	
- (possibly convert MS Fields for temporary solution)	N/A	N/A	N/A	
<b>Phase 2A - Q4 2027 - Q4 2028</b>				
<b>Cadmus North</b>				
- Lower Fields (Throwing / Multi-Sport)	Zero	Zero	133	+133
- Out Buildings	N/A	N/A	N/A	
- Final Paving	N/A	N/A	N/A	
<b>Phase 3 - Q4 2027 - Q3 2028</b>				
HS Campus Field Parking (Fields TBD for a later date)	Zero	Zero	264	+264
MS Cafeteria Expansion	N/A	N/A	N/A	
MS Perf Arts Reno Start	N/A	N/A	N/A	
HS / MS Parking lot	308	308	228	
	Nighttime Spaces	Nighttime Spaces	Nighttime Spaces	
<b>Phase 4 - Q2 2028 - Q4 2029</b>				
HS Lower Front Parking	47	47	137	+90
<b>Additions</b>				
- New Gym	89	89	13	-76
- New Admin & Athletics	93	93	10	-83
- New Performing Arts	N/A	N/A	N/A	
HS Campus Fields (Spring)	Zero	Zero	49	+49
HS Roof Work (Summer)	N/A	N/A	N/A	
HS - Solar Work	N/A	N/A	N/A	
<b>Phase 5 - Q2 2029 - Q3 2030</b>				
HS Upper Front Parking (Summer)	114	65	92	-22
HOP HS - Widen Existing Driveway (Summer)	N/A	N/A	N/A	
HOP MS - New Road (Summer)	N/A	N/A	N/A	
MS Site - Fields Parking / Infrastructure	69	17(demo)	61 + 51 New spaces	+43
HS/MS Site - Demo Admin Bldg	TBD	TBD	TBD	
MS Site - Field transitions to permanent fields				
<b>Phase 6 - Q2 2030 - Q3 2030</b>				
Reno Performing Arts	N/A	N/A	N/A	
Locker Reno -Area B	N/A	N/A	N/A	
<b>Ongoing Summer Work:</b> Mechanical Work Areas F, G, H, J, - infrastructure, equipment - affecting classrooms				
	N/A	N/A	N/A	





**THANK YOU!**



**OWEN J. ROBERTS  
SCHOOL DISTRICT**

BOARD PRESENTATION

DECEMBER 09, 2025

**SCHRADERGROUP**



