



UNIFORM GUIDELINES

Last updated: December 2025.

1. DRESS CODE - ELEMENTARY SCHOOL
STANDARDIZED DRESS GUIDELINES
2. UNIFORM - BRITISH SCHOOL
GUIDELINES
3. DRESS CODE - MIDDLE SCHOOL
STANDARDIZED DRESS GUIDELINES
4. DRESS CODE - HIGH SCHOOL
GUIDELINES



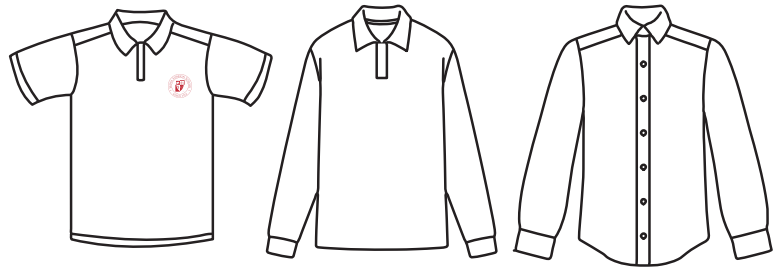
DRESS CODE - ELEMENTARY SCHOOL

STANDARDIZED DRESS GUIDELINES *Last updated: November 2025.*

Standard uniform items can be purchased at the school's store (the Spirit Shop) or other retailers, such as Uniqlo, Muji, Namdaemun Market, Lotte, Homeplus, etc. Students do wear other muted colors than noted below; the goal is for students to be comfortable and mindful of clothing type and color for school dress (ex: no clothing with logos). The recommended guidelines are stated below:

Shirts (Examples on the right)

- Solid white or red recommended.
- Collared shirt—polo-style, button-up, or turtleneck.
- May be short- or long-sleeve.
- Spirit Shop sweatshirts.
- Must completely cover the waist.
- No logos or emblems (unless sold by the Spirit Shop).



Pants, Shorts, Skirts (Examples on the right)

(Examples on the right)

- Long pants, shorts, and skirts recommended to be khaki or black (no leggings).
- Black, white, or gray leggings or tights may be worn under skirts and/or shorts.
- No logos or labels.



PHE Uniforms (Shown on the right)

- **Top:** mandatory SFS PHE shirt available from the Spirit Shop. **Bottom:** black shorts/trainer pants, black leggings under PHE shorts is acceptable. SFS bottoms available at the Spirit Shop (optional).
- **Swimming:** one-piece, form-fitting swimsuit; swim cap for longer hair; towel; goggles; SFS branded swimsuits are not required for PE but available at the Spirit Shop for convenience.



PHE Shirt



Girl's Swimsuit



Boy's Swim Trunk

Shoes (Examples below)

- Trainers and sneakers are appropriate. Flip flops, Crocs, slippers, high heels, platforms, or wedges are not allowed for safety reasons.



Headwear

- Hats and hoods are for outside the buildings only, unless worn for religious purposes.

Winter Wear

- Winter coats, scarves, gloves, and caps may be any color, but must be placed in lockers or backpacks prior to classes.



UNIFORM - BRITISH SCHOOL

GUIDELINES *Last updated: November 2025.*

All uniform items, including PE kit, are available from the Spirit Shop on campus.

Shirts (Shown on the right)

- Must be solid navy collared shirt — polo-style or turtleneck.
- May be short- or long-sleeve.
- Must completely cover the waist.
- Undershirts should not be seen.
- Spirit Shop zip-up jacket and sweaters are recommended.



Navy Polo T-Shirt
(Short sleeve)



Navy Polo T-Shirt
(Long sleeve)



Navy Round-neck
Sweatshirt
(Long sleeve)



Zip-up Jacket

Trousers, Shorts, Skirts, Skorts (Shown on the right)

- Must be gray.
- No logos or labels.
- No undergarments showing.
- All options available at the Spirit Shop.



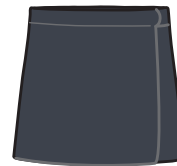
Girl's Pants



Boy's Pants



Boy's Shorts



Girl's Skirt



Girl's Skirt

Socks, Tights

- Must be grey or black.

PE Uniforms (Shown on the right)

- **Top:** mandatory SFS PE shirt from the Spirit Shop. **Bottom:** black shorts/trainer pants, black leggings under PE shorts is acceptable. SFS bottoms available at the Spirit Shop (optional).
- **Swimming:** one-piece, form-fitting swimsuit; swim cap for longer hair; towel; goggles; SFS branded swimsuits are not required for PE but available at the Spirit Shop for convenience.



PE Shirt



Girl's Swimsuit



Boy's Swim Trunk

Shoes (Examples below)

- Sports shoes are for PE only and only black shoes/trainers (**no white stripes or soles**) should be worn for the school day.

(Non-black)
PE only



Headwear (Shown on the right)

- School hats should be worn for outdoor play in the warmer/sunny weather.



Navy Sun Hat



Navy Cap

Winter Wear

- Outdoor coats in winter should be navy, black, or gray to match with the school uniform colors.



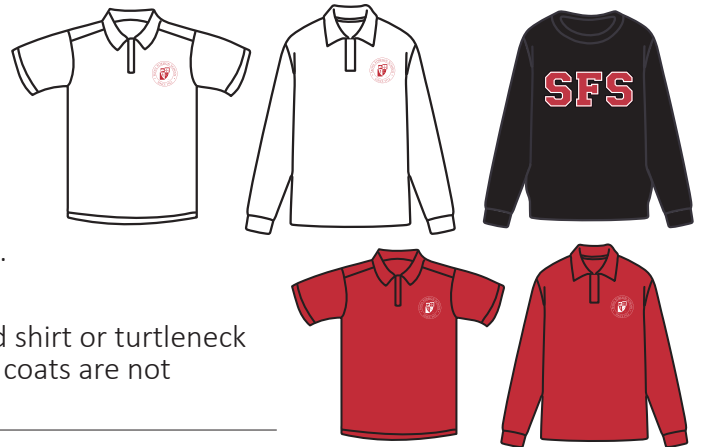
DRESS CODE - MIDDLE SCHOOL

STANDARDIZED DRESS GUIDELINES *Last updated: November 2025.*

All students will dress in a way that is appropriate for the school day or for any school sponsored event. The school is responsible for seeing that all students can comfortably engage in the educational environment and that student attire does not interfere with the health or safety of any student. Standardized dress ensures that attire contributes to a positive atmosphere for all students, and sustains a community that is inclusive of a diverse range of identities. The dress code is not meant to focus on every detail; the school expects that students respect the spirit of the code. To ensure effective and equitable implementation of this dress code, school staff shall enforce it consistently and in a manner that does not reinforce or increase marginalization or oppression of any group. The MS appreciates students and parents partnering with us on this so that we can focus less on dress and more on learning.

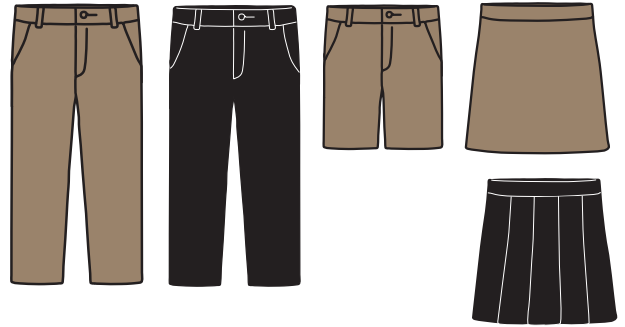
Shirts, Sweatshirts, Hoodies (Examples on the right)

- Must be purchased from the Spirit Shop.
- May be short or long-sleeve.
- Must not be ripped or frayed.
- Must completely cover the waist.
- No logos or emblems (unless sold by the Spirit Shop).
- Undershirts should not be seen.
- Spirit Shop sweatshirts are acceptable with a collared shirt or turtleneck underneath. Other sweatshirts, sweaters, jackets, or coats are not allowed to be worn in classrooms.



Pants, Shorts, Skirts (Examples on the right)

- Long pants, shorts, and skirts must be khaki or black.
- No sweatpants, athletic pants, or leggings.
- Shorts or skirts must be mid-thigh or longer in length.
- Black, white, or gray leggings or tights may be worn under skirts and/or shorts.
- Must not be ripped or frayed.
- Belt, if worn, needs to be black or brown. No logo.
- No logos or labels.
- No undergarments showing.



PHE Uniforms (Shown to the right)

- Middle School students are expected to change for PHE classes.
Top: mandatory SFS PHE shirt available from the Spirit Shop.
Bottom: black shorts/trainer pants, black leggings under PHE shorts is acceptable. SFS bottoms available at the Spirit Shop (optional).
- A separate pair of athletic shoes should be used for PHE classes.
- Only sweatshirts, hoodies, or jackets purchased from the Spirit Shop may be worn during class.
- **Swimming:** one-piece, form-fitting swimsuit; swim cap for longer hair; towel; goggles; SFS branded swimsuits are not required for PHE but available at the Spirit Shop for convenience.



Shoes

- Shoes must be mostly black or brown.
- Flip flops, Crocs, slippers, high heels, platforms, or wedges are not allowed for safety reasons.



Headwear

- Hats and hoods are for outside the buildings only, unless worn for religious purposes.

Winter Wear

- Winter coats, scarves, gloves, and caps may be any color, but must be placed in lockers or backpacks prior to classes.



DRESS CODE - HIGH SCHOOL

GUIDELINES *Last updated: November 2025.*

Philosophy

The goal of the SFS Dress Code is to help create and contribute to a community atmosphere that is focused on learning in a school with students of varied ages. Students should dress in a manner, detailed below, that is appropriate to the situation. Teachers will warn students who are not following the Dress Code (or the spirit of the Code) and will refer students to the administration for further disciplinary measures in the case of serious offenses. Administrative actions in the case of serious offenses include, but are not limited to, sending students home to change or asking the parents to bring a change of clothes to school. The dress code does not attempt to embrace every conceivable situation in the realm of dress but is meant to provide a reasonable standard for parents, faculty, and students.

Principles

- Clothing should be appropriate for promoting the goal of learning. It should therefore be comfortable for the wearer and not a distraction to learning.
 - Dress should show respect for the culture of our host country, the cultures represented in our school, and the students of varied ages attending SFS.
-

The Dress Code Specifics

- All aspects of dress should be neat, clean, and modest.
 - No offensive printing or offensive pictures are allowed, including references to drugs.
 - Tops must fit properly with a modest neckline. All tops must have wide enough sleeves to cover shoulder tops and the back. Undergarments and bare midriffs should not be visible.
 - Pants should fit so that undergarments and bare skin are not visible.
 - Dresses, skirts, and shorts should be no shorter than a student's fingertips when a student is standing and their hands are hanging at their sides.
 - Safe footwear (shoes or sandals) must be worn at all times, e.g. no open-toed footwear to be worn in Science classes.
 - No visible logos, except if sold at the Spirit Shop.
-

PHE Uniforms (Shown to the right)

- Warm weather—SFS PHE shirt.
 - Cold weather—SFS PHE shirt/Black shorts; SFS tracksuit bottoms or dark sweats
 - Dress code compliant warm athletic hoodie/jacket
- *11th and 12th grade classes are not required to wear the SFS PHE uniform but are required to wear appropriate athletic shoes, shorts, and tops.



PHE Shirt



Girl's Swimsuit



Boy's Swim Trunk

Exceptions

- Students may be asked to dress more formally for certain events.
 - Students are encouraged to dress appropriately for School Spirit days.
-

Accountability

- Students are responsible for what they wear and the image they present of themselves.
 - Parents are to ensure that their students understand and abide by the dress code.
 - Teachers will be checking dress code throughout each day. Students of concern will be sent to the Assistant Principal.
 - The Administration will take appropriate disciplinary measures for repeat offenders.
-