

---

**SHELDON ISD**

Where Vision Becomes Legacy



# Academics

December 11, 2025

*Sheldon ISD will provide personalized learning opportunities to ensure all students graduate college and career ready.*

---

# Academics



Karen Gallow  
Deputy Superintendent



Dr. Donald Stewart  
Assistant Superintendent of  
Teaching and Learning



Assistant Superintendent of  
Educational Support  
Services

---

# Academics



Becky Zalesnik  
Executive Director of  
Innovative Programs



Brooke Douget  
Executive Director of  
Special Education



Raechel Broussard  
Director of Research,  
Assessment, & Data



Suzy Caballero  
Director of Multilingual  
Programs



Heath Dear  
Director of Advanced  
Academics

---

# Academics



Rebecca Joseph  
Director of Curriculum and  
Instruction



Dr. Denise Mustin  
Director of Early Childhood



Bonita Taylor  
Director of Career &  
Technical Education



Jennifer Williams  
Director of Guidance &  
Counseling



Jana Rolling  
Director of Teaching and  
Learning

---

**SHELDON ISD**

Where Vision Becomes Legacy



# Academics Rotations

Advanced Academics, Curriculum and Instruction, and Early Childhood

*Mission: To maintain a safe environment where staff, parents, and community work together to engage students in personalized learning opportunities to ensure they are college- and career-ready.*

---

**SHELDON ISD**

Where Vision Becomes Legacy



# Advanced Academics

Heath Dear

Director of Advanced Academics

---

**SHELDON ISD**

Where Vision Becomes Legacy



# Advanced Academics

Dawona Miles

Coordinator of Dual Credit

# WHAT IS ADVANCED ACADEMICS

- **Dual Credit/ Dual Enrollment**
- **Pre Advanced Placement (Pre-AP)**
- **Advanced Placement (AP)**
- **Gifted and Talented**
- **AVID**



---

# Which statement is true?

C.E. King High School has over 300 students taking courses at San Jacinto College.

or

C.E. King High School has over 300 students taking courses at University of Texas.



---

**Both are  
true!**



C.E. King High School has over 900 students taking courses at San Jacinto College.

and

C.E. King High School has over 300 students taking courses at University of Texas.



---

# Did you know?

**C.E. King students  
earned 12,157 hours  
of college credit for  
the academic year in  
2024-2025!**



# Post Secondary Savings

## ■ Dual Credit Partners

### ■ San Jacinto College

(11,613 \* \$83.00 = \$963,879)

### ■ University of Texas On-Ramps

(544 \* \$452.00 = \$245,888)

**\$1,209,767.00**



## House Bill 8

### **FAST (*Financial Aid for Swift Transfer*) Scholarship**

- The FAST program provides funding to participating public institutions of higher education so they can offer dual credit courses to educationally disadvantaged students at no cost to these students.

### **Qualifications**

- Are enrolled in an eligible dual credit course at a public school district or charter school (i.e., eligible for Foundation School Program funding).
- Are taking a course offered through an institutional agreement, as outlined in TAC, Section 4.84, from an institution of higher education that has opted to participate in FAST.
- Were qualified for free/reduced-price lunch in any of the four school years prior to the academic year in which they enroll in the dual credit course.

### **Covered Expenses**

- All tuition and fees for an eligible dual credit course.
- Books and supplies.
- All course materials.

**DUAL CREDIT FUNDING**

**FREE AND REDUCED  
SCHOOL LUNCH APPLICATIONS**

**APPLY TODAY**

**APPLY ONLINE**  
[www.sheldonisd.com](http://www.sheldonisd.com)

**APPLY IN PERSON**  
Child Nutrition Office  
13011 Garret Rd. Houston, TX 77044

**CONTACT US AT**  
[ChildNutritionISD@sheldonisd.com](mailto:ChildNutritionISD@sheldonisd.com)

**SCAN HERE  
TO APPLY**

**SOLICITUDES DE ALMUERZO  
ESCOLAR GRATUITO Y REDUCIDO**

**SOLICITE HOY**

**APLICAR EN LÍNEA**  
[www.sheldonisd.com](http://www.sheldonisd.com)

**APLICAR EN PERSONA**  
Child Nutrition Office  
13011 Garret Rd. Houston, TX 77044

**CONTÁCTANOS EN**  
[ChildNutritionISD@sheldonisd.com](mailto:ChildNutritionISD@sheldonisd.com)

**ESCANEE AQUÍ  
PARA APLICAR**

Esta institución es un proveedor que ofrece igualdad de oportunidades.



**SHELDON ISD**

**Where Vision Becomes Legacy**

[www.sheldonisd.com](http://www.sheldonisd.com)

- Sheldon Early College High School
- Modified Early College Academy (MECA)
- Career and Technical Education (CTE)
- STEM (P-TECH)
- Academic (3-24 college credits)
  - San Jacinto College
  - OnRamps (UT Austin)



# SHELDON ISD DUAL CREDIT PROGRAMS

# Sheldon Early College High School

*"We will be successful."*



- **Earned all TEA eligible distinctions**
- TEA Designated Early College High School in partnership with San Jacinto College.
- 64 students graduated with Associate degrees
- Grades 9 - 12

# 17 ADVANCED PLACEMENT COURSES

- English Language and Composition
- English Literature and Composition
- Spanish Language and Composition
- Spanish Literature and Composition
- French Language and Composition
  - U.S. History
  - World History
- Government and Politics
  - Macroeconomics
  - Computer Science
  - 2D Art and Design
  - 3D Art and Design
    - Physics
    - Chemistry
    - Biology
    - Statistics
    - Calculus



# 2023 ADVANCED PLACEMENT SCHOLAR AWARDS

- **25 AP Scholars**  
Score of 3 or higher on 3 or more AP Exams
- **1 AP Scholar with Honors**  
Score of 3 or higher on 4 or more AP Exams  
(average of 3.25 on all exams taken)



# 2024 ADVANCED PLACEMENT SCHOLAR AWARDS

- **41 AP Scholars**  
Score of 3 or higher on 3 or more AP Exams
- **4 AP Scholar with Honors**  
Score of 3 or higher on 4 or more AP Exams  
(average of 3.25 on all exams taken)



# 2025 ADVANCED PLACEMENT SCHOLAR AWARDS

- **58 AP Scholars**  
Score of 3 or higher on 3 or more AP Exams
- **5 AP Scholar with Honors**  
Score of 3 or higher on 4 or more AP Exams  
(average of 3.25 on all exams taken)

**AP<sup>®</sup> Scholars**



# GIFTED AND TALENTED PROGRAM



- Increased identification
- Enrichment program during the school day
- 312 elementary projects at 2025 Expo



# WHAT IS AVID?

AVID's **mission** is to close the opportunity gap by preparing all students for college and career readiness in a global society. AVID is a **system** designed to increase the number of college and career ready students.



**Decades of College Dreams**

## **What we do—**

- W.I.C.O.R.
- In-class support (tutorials)
- College and Career Research
- Financial Aid
- College Applications

# NATIONAL AVID SHOWCASE SCHOOL

**Congratulations**

**SHELDON  
ELEMENTARY**



# NATIONAL AVID DEMONSTRATION SCHOOL

**Congratulations**

**NULL MIDDLE  
SCHOOL**



---

**THANK YOU!**

---

**SHELDON ISD**

Where Vision Becomes Legacy



# Curriculum and Instruction

Rebecca Joseph

Director of Curriculum and Instruction

---

# True or False

Students who read for 20 minutes a day for five days per week are more likely to score better than 90% of their peers who take a standardized test.



---

# True

Reading daily for 20 minutes exposes students to approximately 1.8 million words per year. This exposure makes children more likely to

- 1) score in the 90th percentile on standardized tests.
- 2) improve critical thinking
- 3) improve writing skills
- 4) relax at the end of a day



# HERE'S THE IMPACT OF READING 20 MINUTES PER DAY!

The average eighth grader spends four hours per day texting, gaming, or on social media.

A student who reads

20:00

minutes per day

will be exposed to  
**1.8 MILLION**  
words per year  
and scores in  
**90th PERCENTILE**  
on standardized tests

A student who reads

5:00

minutes per day

will be exposed to  
**282,000**  
words per year  
and scores in  
**50th PERCENTILE**  
on standardized tests

A student who reads

1:00

minute per day

will be exposed to  
**8,000**  
words per year  
and scores in  
**10th PERCENTILE**  
on standardized tests

---

**SHELDON ISD**

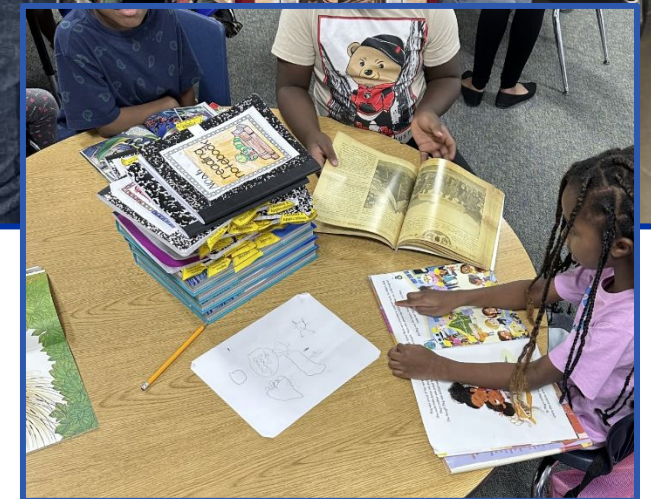
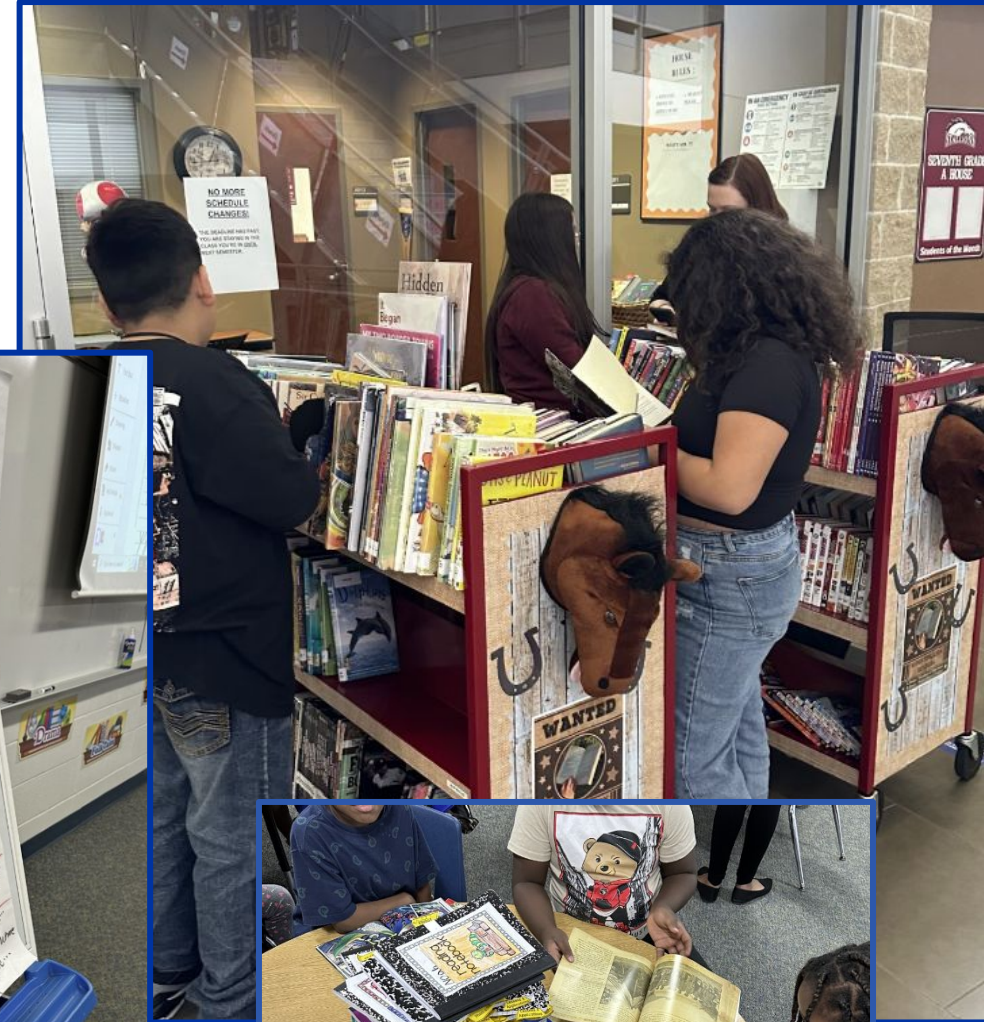
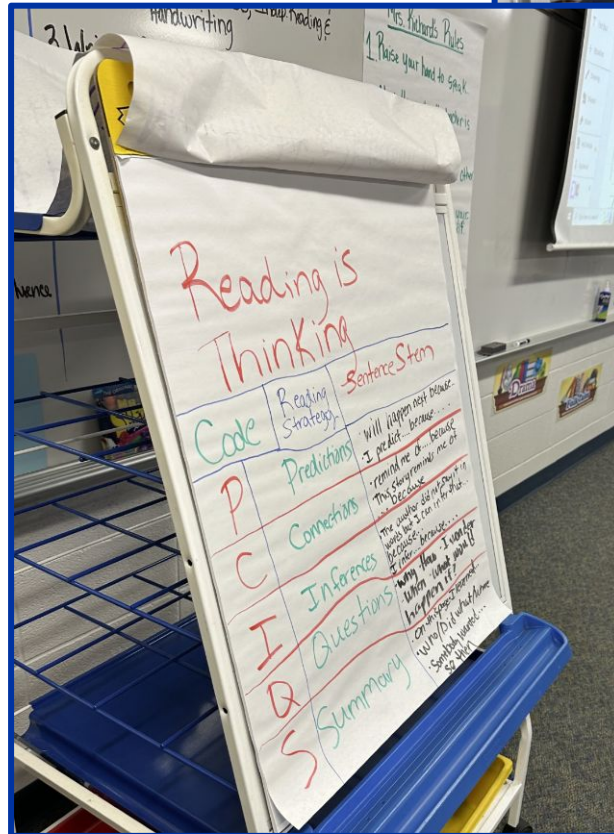
Where Vision Becomes Legacy



# Curriculum Connections

# Focused on Literacy

- Explicit and Systematic Phonics Instruction
- Writing Across the Curriculum
- Extensive Professional Development for Teachers
- Motivation for Students
- Screeners and Communication





## Path to Readiness

<https://sites.google.com/apps.sheldonisd.com/pathtoreadiness/home>

Family website that provides information in English and Spanish about:

- What is i-Ready?
- Reading Level Goals for K-8 Reading
- Resources and activities that families can use to help their children at home based on their reading level
- What is the i-Ready Mathematics Classroom?



# Personalized Instruction (Reading Pathways)

- **i-Ready Personalized Instruction** is an online reading program that supports students on their level.
- **Focused lessons based on Diagnostic Results**
- **Diagnostic is taken BOY, MOY, and EOY** to track need and growth.
- **Teachers can also assign lessons here**
- **Includes fun games for students**
- **It is available for students to access from school and at home.**



## Diagnostic Results



School  
Subject  
Student  
Student ID  
Student Grade  
Diagnostic



3  
Diagnostic 1 (09/25/24)

### Key

- Mid or Above Grade Level
- Early On Grade Level
- One Grade Level Below
- Two Grade Levels Below
- Three or More Grade Levels Below
- ⊕ Not assessed due to grade or domain exempted

## Diagnostic 1

### Graph Key

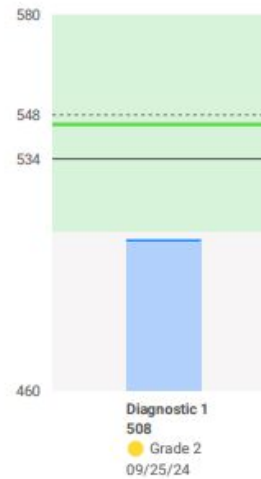
- Mid On Grade Level (545)
- On Grade Level (511-602)
- - - - Stretch Growth (548)
- Typical Growth (534)

### Typical Growth

Typical Growth: The average annual growth for a student at this grade and placement level on their baseline Diagnostic.

### Stretch Growth

Stretch Growth: An ambitious, but attainable, level of annual growth that puts students who are below grade level on a path toward proficiency.



This Diagnostic is considered the baseline and is used to establish Growth Measures for this student.

### Overall Reading

● Grade 2 (508)  
Standard Error +/- 9

Domain	Placement
Phonological Awareness*	<span style="color: gray;">⊕</span> Not Assessed
Phonics*	<span style="color: green;">●</span> Max Score
High-Frequency Words*	<span style="color: green;">●</span> Surpassed Level
Vocabulary	<span style="color: yellow;">●</span> Grade 2
Comprehension: Overall	<span style="color: yellow;">●</span> Grade 2
Literature	<span style="color: yellow;">●</span> Grade 2
Informational Text	<span style="color: yellow;">●</span> Grade 2

\* Foundational Domains

## National Norm Performance and Lexile® Framework for Reading Measure

National Norm:  
57th Percentile

Lexile® Reading Measure:  
595L

Lexile Range:  
495L-645L

The Lexile® Find a Book tool enables you to search for books by grade, interest, and Lexile measure. You can view a book's most challenging words and build a customized reading list. Search for books and see additional Lexile tools now at [Hub.Lexile.com](https://www.lexia.com)

[How to use the Lexile Find a Book tool](#)

[Understanding Lexile reading measures](#)

## Student Motivation & Incentives




The class with the most completed lessons with an 80% or higher will receive a prize and have a trophy to display for a month!

A promotional poster for the i-Ready Monthly Challenge. At the top, it says 'i-Ready' with a small cartoon character next to it. Below that, 'MONTHLY CHALLENGE' is written in large, pink, bubbly letters. The central focus is a large golden trophy with a blue ribbon around its base that says 'I-READY WINNER'. A red seal with the number '1' is on the trophy. The background is dark blue with colorful confetti and streamers. At the bottom, it says 'K-5 District Competition' in white. Below that, in yellow text, it reads: 'Class with the MOST completed lessons with an 80% or higher will receive a prize and have the trophy to display for a month!'. At the very bottom is the Sheldon ISD logo, which includes the text 'SHELDON ISD' and 'Where Vision Becomes Legacy' next to a stylized arrow graphic.

# Family Connection

<https://www.sheldonisd.com/students-families/family-connection>



**SHELDON ISD**  
Where Vision Becomes Legacy

Sheldon Independent School District

[Calendar](#) [Careers](#) [Register](#) [CONTACT US](#)

[About Us](#) [Departments](#) [Students & Families](#) [Staff](#) [Community](#)

[Family Connection](#) [Students & Families Resources](#)

HOME > STUDENTS & FAMILIES > FAMILY CONNECTION

## Family Connection

Family Connections is a resource designed to keep families informed about their child's progress throughout the school year. It provides detailed weekly descriptions of the concepts and skills students are learning in various subjects, organized by grading quarter. This resource helps parents and guardians stay connected to their child's learning, understand the curriculum, and support academic success by providing clear insights into what their child is learning and how they are progressing. Sheldon ISD believes learning is an extension from the school to home. We value the support of our families in their child's learning.



---

**SHELDON ISD**

Where Vision Becomes Legacy



# Early Childhood Education

Dr. Denise Mustin

Director of Early Childhood Programs

---

# True or False

90% of a child's  
brain develops by  
age 5.



---

# True

A child's brain grows faster from birth to age five than at any other time in life. By the time your child blows out their fifth birthday candles, **about 90% of their brain is already developed**. That doesn't mean they've learned everything—they're just building the *foundation* that all future learning will sit on.

Think of your child's brain like a house being built.

- **Birth–5 is when the walls, wiring, and structure are created.**
- School-age years and beyond add the rooms, decorations, and upgrades.

During these early years, the brain makes millions of connections every second. These connections grow stronger through everyday experiences: talking, reading, playing, exploring, and feeling safe and loved. When children have rich early learning experiences and strong relationships, their brain pathways grow stronger and more efficient.

That's why early childhood programs—and what families do at home—matter so much. The more opportunities children have to wonder, imagine, solve problems, and play, the stronger their brain foundation becomes.



---

# True or False

The Texas Education Agency looks at Early Childhood as grades Pre-K and Kindergarten.



---

False

In Texas, early childhood education includes children from Birth to 2nd Grade.



# Sheldon ISD Early Childhood Programs

- ECSE - Early Childhood Special Education offered at both ECAs. Available for children with identified disabilities when they turn 3 years old.
- Pre-K and Kindergarten: All Pre-K and Kindergarten students attend one of the district's two early childhood academies: Sheldon ECA (527 students) and Cravens ECA (553 students)
- 1st and 2nd grades are housed on each of the 6 elementary campuses. They also support executive function skills building and have been able to visit and vertically align with our Kindergarten programs.
- Dual Language program offered beginning in Kindergarten
- Gifted and Talented program offered for identified students beginning the Spring semester of Kindergarten



# Sheldon ISD is committed to providing the best early childhood education to ALL

## Pre-K for ALL Children

- **FREE** for all children who:
  - Turn **4 years old by Sept. 1**
  - **Live in Sheldon ISD** attendance zone

## Purposeful, High-Quality Early Learning

- **Thematic Learning Environments/ Curriculum**
  - Fueling Brains thematic curriculum, Pre-K Guidelines
  - 14 rich themes that build **oral language, vocabulary**, curiosity, and background knowledge
- **Left Brain / Right Brain Approach**
  - **Left Brain**: Montessori-inspired (logic, focus, independence)
  - **Right Brain**: Reggio Emilia-inspired (creativity, problem-solving, collaboration)



## *Why Play Matters: More than “Just Fun” in Pre-K and Kindergarten*

- **Play is how young children learn best. Through play, children learn to:**
  - **Think and solve problems** (“How do I build this taller?”)
  - **Use language** and grow vocabulary
  - **Work with others**, share, and handle conflict
  - **Develop self-control**, patience, and focus
  - **Strengthen early literacy and math skills** in meaningful, hands-on ways



In Sheldon ISD, Teachers intentionally design play experiences to introduce academic skills in ways that young brains can understand and remember. Research is very clear: child who learn through play develop stronger problem-solving abilities, better language skills, and deeper creativity - all of which help them succeed in school for years to come.

## *Executive Function Skill Development (Pre-K & Kinder)*

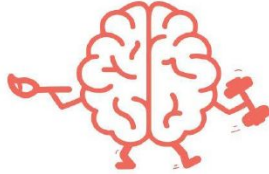
Partnered with **Fueling Brains** to strengthen:

### **Working memory**



Is responsible for holding information and having it accessible when it is needed to complete a task

### **Cognitive flexibility**



Allows the child to deal with any encountered problems by using different strategies

### **Self-regulation (Inhibitory Control)**



Allows the child to ignore any distractions and focus on the task at hand

**Why it matters:** Executive functions help children plan, focus, follow routines, manage emotions, and become confident, independent learners.

### **24-25 School Year**

BOY	62%	55%	62%
EOY	92%	89%	91%

# Family Engagement + Student Success

## Toddler & Family Training Events (3× per year)

Serving children ages **2–4** who are not yet enrolled in school

Families learn how to:

- Build **independence** skills
- Support children in **making friends**
- Prepare children socially and emotionally for **Pre-K**
- Engage in early learning routines at home



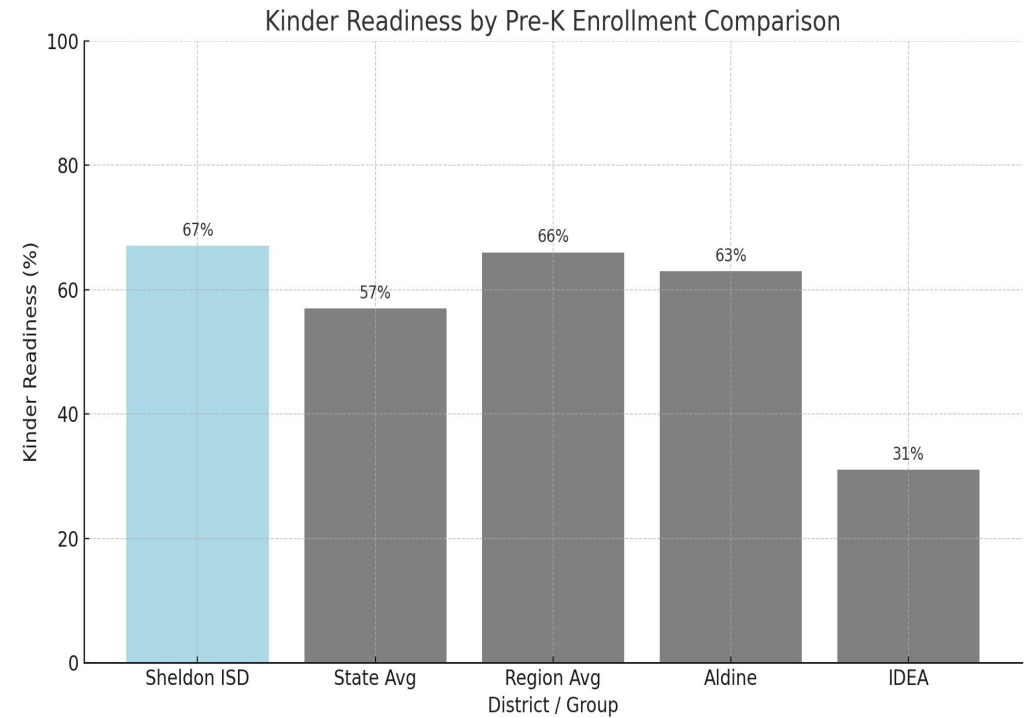
## Ready Rosie (A free resource for all ECA parents)

- Builds capacity and confidence in families through Modeled Moment Videos and Family Workshops.



# Sheldon ISD Kindergarten Outperforms the State

- Sheldon ISD students showed **higher growth** than the state in:
  - Early literacy
  - Early numeracy
  - Executive function skill performance
- Reflects strong early learning models, highly trained teachers, and consistent family partnership



---

**THANK YOU!**

---

# SHELDON ISD

Where Vision Becomes Legacy



## Get the Word Out

Karen Gallow

Deputy Superintendent



---

# True or False

KHS and KASE graduates must earn a 3.0 GPA to qualify to attend San Jacinto College for free after graduating from high school.



---

# False

San Jacinto College provides the Promise scholarship, which includes free tuition and books, to any KHS or KASE graduate who meets the criteria, **regardless** of the grade point average.



# Promise @ San Jac - Class of 2026



- **Free** tuition, books, and supplies after Financial Aid
- Promise @ San Jac is an amazing scholarship opportunity for **graduating Sheldon ISD seniors** residing in the San Jacinto College taxing district.

# Promise @ San Jac – Enroll for Fall 2026

- All students who graduate from KHS or KASE are eligible for the scholarship.
- **All** means all.
- Students must:
  - Sign a pledge and apply to attend college by February 28, 2026
  - Submit their FAFSA/TASFA application by April 30, 2026.
  - Enroll and register by June 30, 2026.

# KHS Decision Day



# EARLY CHILDHOOD ACADEMIES

## Full-Day Pre-K



# Many Opportunities and Choices

## Elementary

- Pre-K/Kindergarten Centers
- Dual Language Program
- Performing and Visual Arts
  - Sheldon Lake Elementary
  - Garrett Elementary
- International Academies
  - Royalwood Elementary
  - Monahan Elementary
- STEM
  - Carroll Elementary
  - Sheldon Elementary

## Secondary

- 29 Career & Technology Options
- Middle School STEM
- 9-12 P-TECH Academy
- King Academic School of Excellence

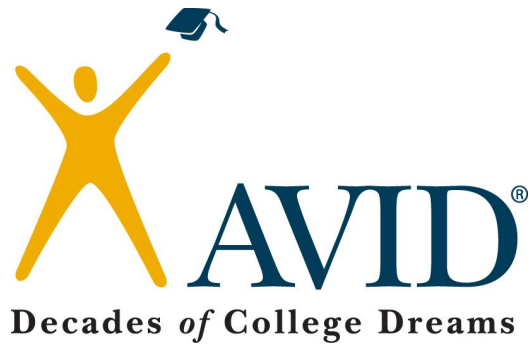
# State and Nationally-Recognized Academic Programs



Fueling  
Brains



Project Lead  
the Way



STEM/P-TECH



# C.E. King High School

## What we are doing is “monumental.”



# QUESTIONS

