

School District of Clayton
Athletic Facilities Modernization

SCHEMATIC DESIGN
PROGRESS REPORT

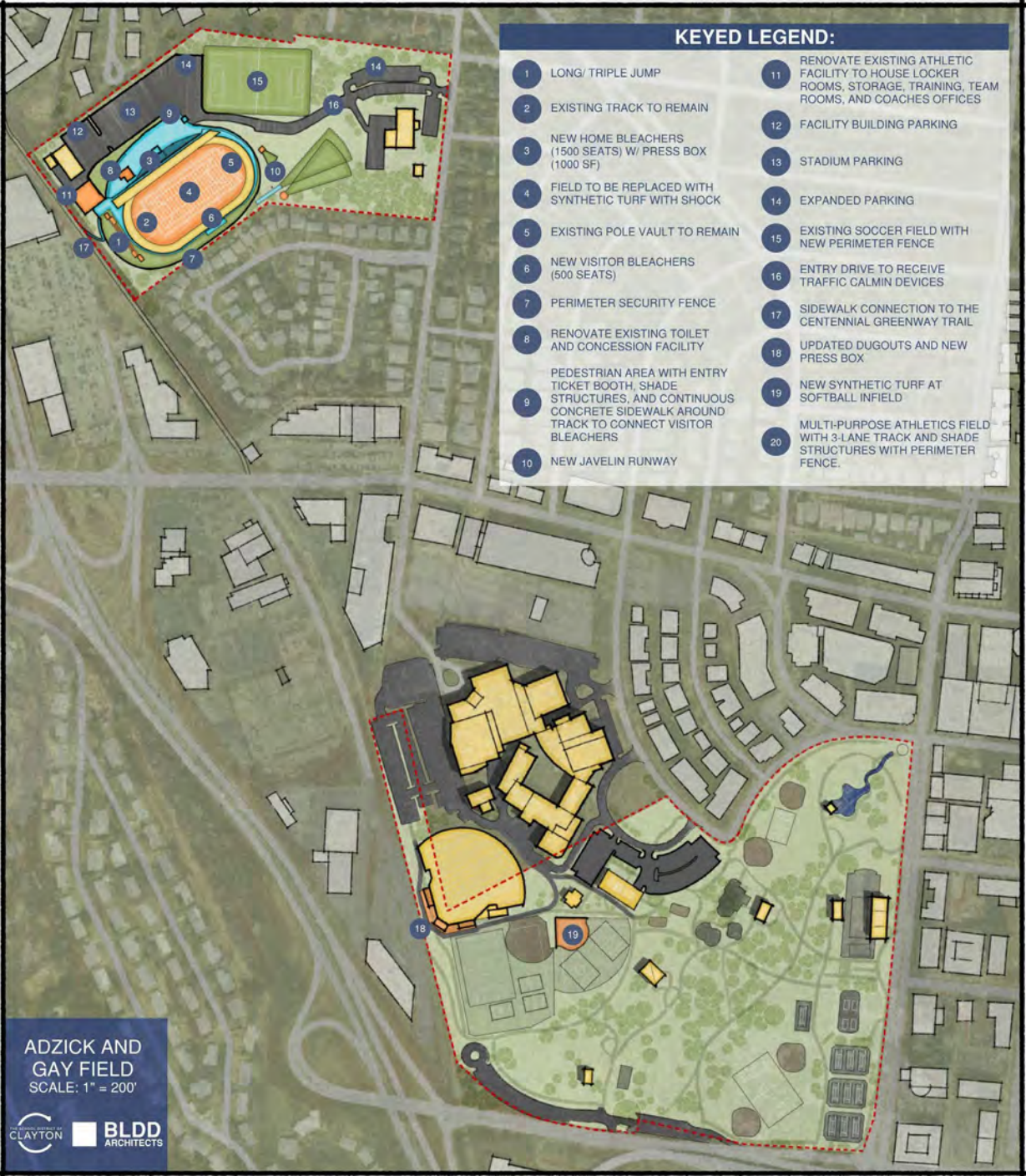
December 10, 2025



School District of Clayton Athletic Facilities Modernization

PROJECT OVERVIEW

December 10, 2025



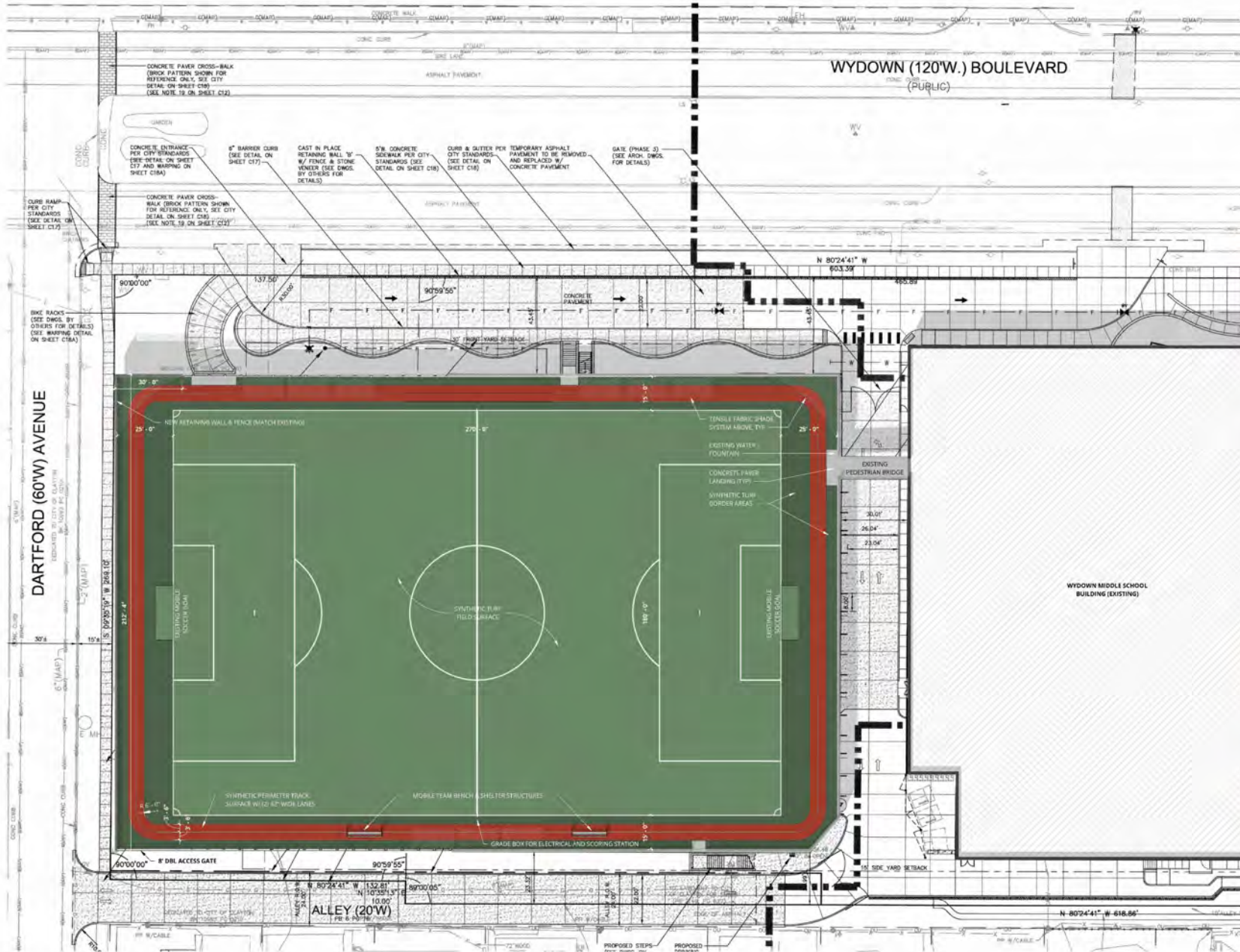
ADZICK AND GAY FIELD
SCALE: 1" = 200'



School District of Clayton
Athletic Facilities Modernization

WYDOWN MIDDLE SCHOOL

December 10, 2025



EXAMPLE PHOTO - FABRIC SHADE STRUCTURE
BASIS-OF-DESIGN: USA SHADE OR LAWRENCE FABRICS



EXAMPLE PHOTO - MOBILE TEAM BENCH & SHELTER STRUCTURE
BASIS-OF-DESIGN: KIKK GOAL CLUB SHELTER

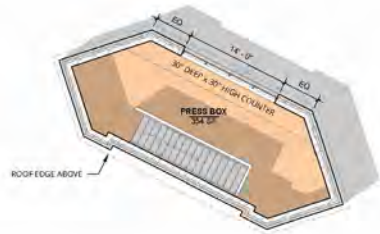
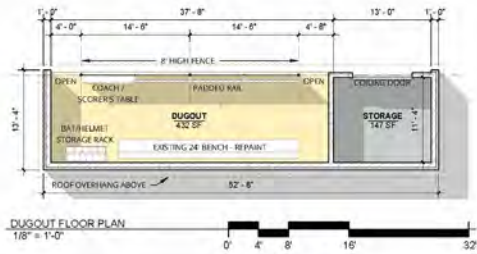


Site Plan - Wydown Athletic Field

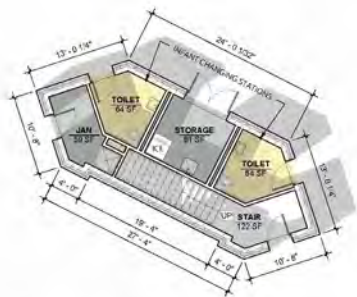
School District of Clayton
Athletic Facilities Modernization

ADZICK FIELD /
SHAW PARK SOFTBALL FIELD

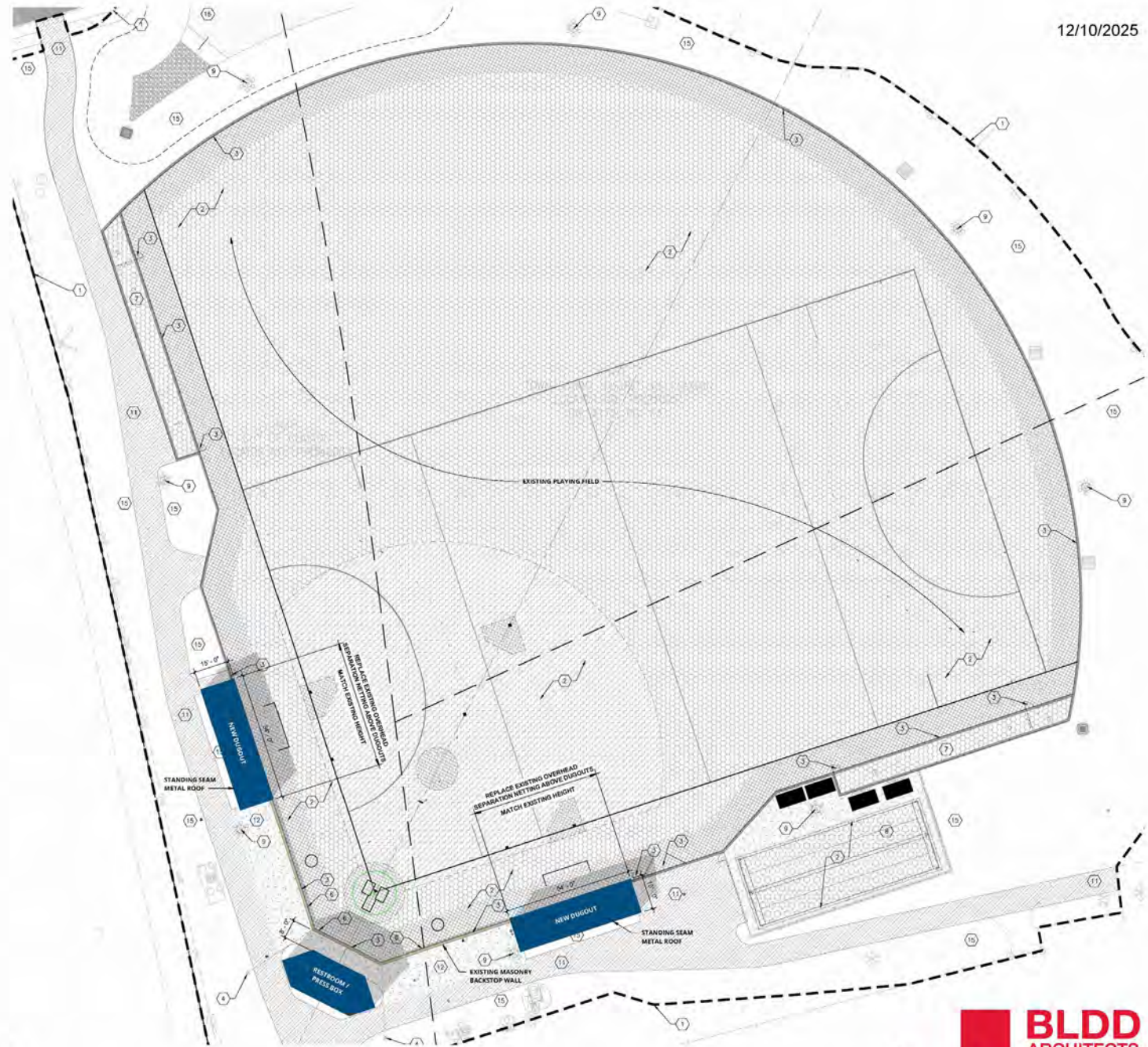
December 10, 2025



RESTROOM / PRESS BOX SECOND FLOOR PLAN
1/8" = 1'-0"



RESTROOM / PRESS BOX FIRST FLOOR PLAN
1/8" = 1'-0"



Adzick Field Improvement Plans

SITE PLAN - ADZICK FIELD
1" = 20'-0"





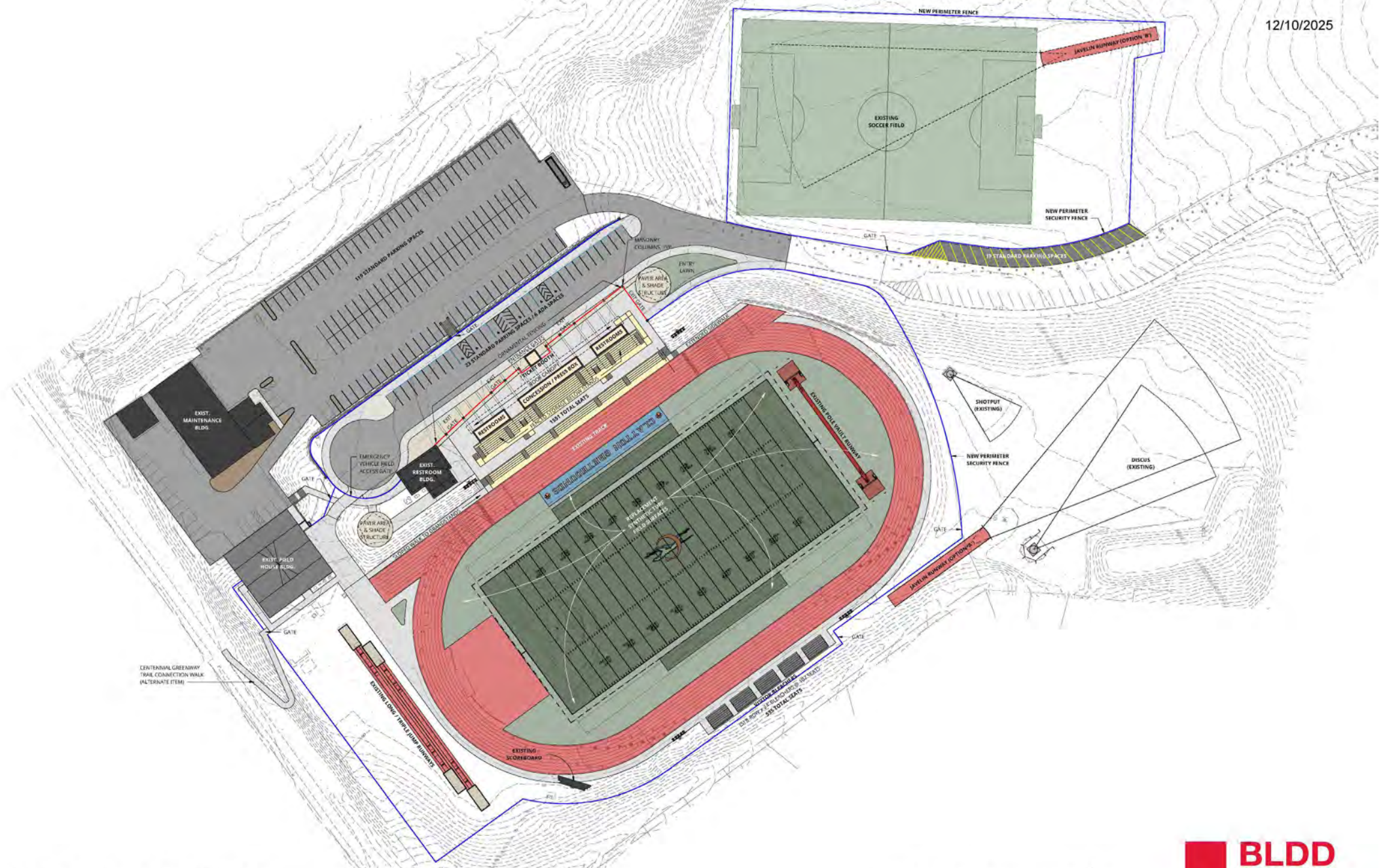
Shaw Field #5 Improvement Plan



School District of Clayton
Athletic Facilities Modernization

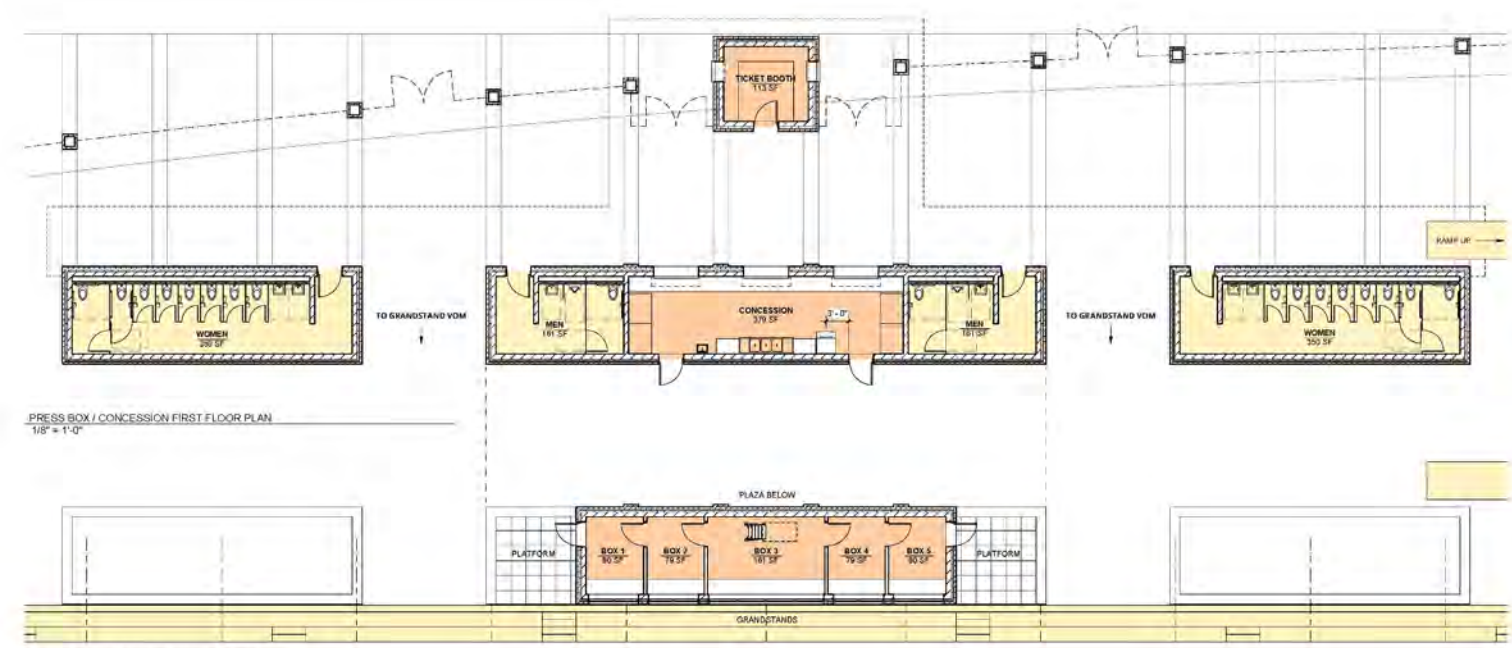
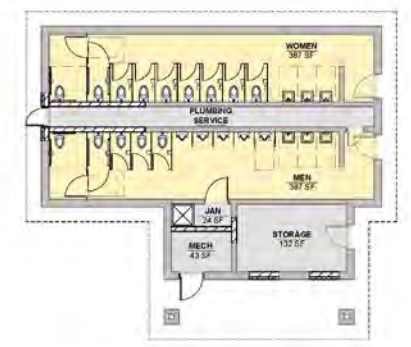
GAY FIELD

December 10, 2025



Site Plan - Gay Field



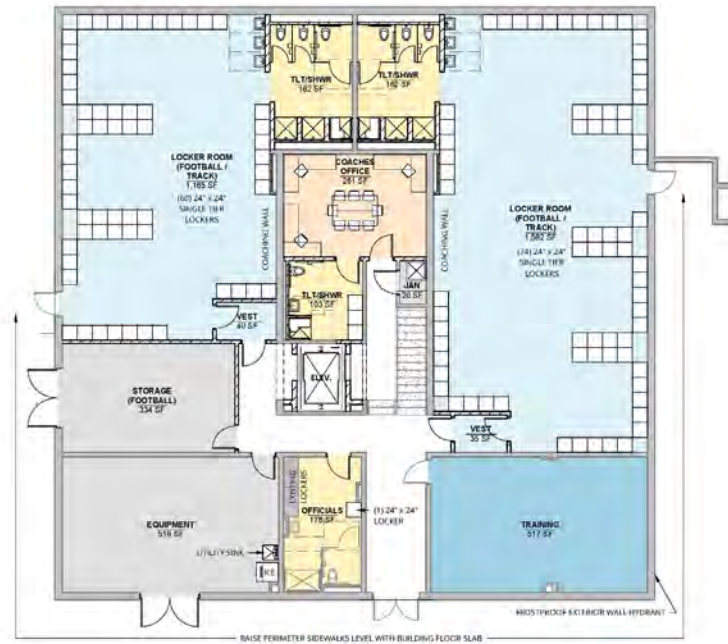


Concession Building Floor Plans - Gay Field





FIELD HOUSE FIRST FLOOR PLAN
1/8" = 1'-0"



FIELD HOUSE SECOND FLOOR PLAN
1/8" = 1'-0"

Field House Floor Plans - Gay Field

