

## ECSE Services in St. Paul Public Schools Pre-K and Specialized Programs

### Classroom Information

- ☆ Preschool aged children are eligible for our services based on an evaluation that shows a delay in development
- ☆ SPPS Pre-K and ECSE specialized classrooms are located in elementary schools and Hubs throughout the school district
- ☆ SPPS 4 year old Pre-K classrooms welcome children with special needs. We provide inclusive supports.
- ☆ SPPS ECSE specialized classrooms are for children with significant needs ages 3-5
- ☆ All ECSE students have access to the district's preschool curriculum

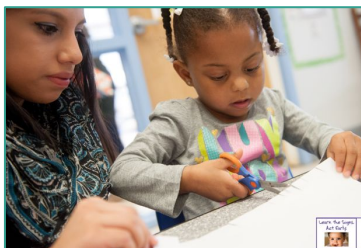


### Early Childhood Special Education Services

- ☆ Our services
  - ☆ Are **free**
  - ☆ Have no waitlist for eligible children
  - ☆ Have no income requirements
  - ☆ Require parent consent
  - ☆ Do not ask about immigration status
  - ☆ Transportation is available
- ☆ We value your home culture and language. Interpreters are used to communicate with families.

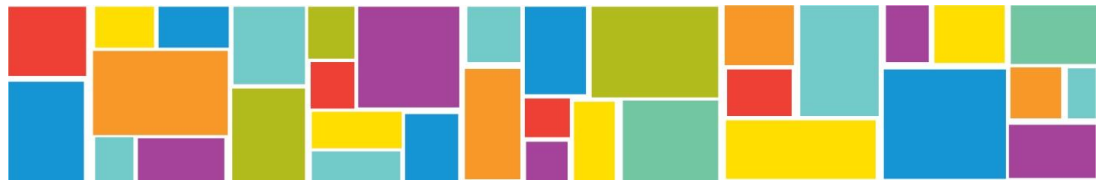
### What to Expect

- ☆ Services are available from a child's 3<sup>rd</sup> birthday until entrance to kindergarten
- ☆ We provide a range of services based on a child's development and learning needs
- ☆ An Individualized Education Plan (IEP) is written each year with your family to determine learning goals and the plans for services
- ☆ Regular progress monitoring about supports needed to reach IEP goals
- ☆ ECSE staff guide families through transitions to preschool programs and kindergarten special education services



### Your Team

- ☆ Your child's team may include an ECSE Teacher, a Speech and Language Pathologist, an Occupational Therapist, a Physical Therapist, a Social Worker, a Nurse, an Audiologist, a teacher of Deaf/Hard of Hearing, and a teacher of Blind/Visual Impairments
- ☆ Our teams help children learn new skills within classroom routines and learning activities. We collaborate with Pre-K teachers to maximize learning opportunities



## Transportation

- ★ Special Education transportation is based on individual student need and by area of housing or childcare to the Hub, PreK or Specialized Program site

## Contact Early Childhood Special Education Program:

- ★ **Gina Paton**, Supervisor, ECSE
  - gina.paton@spps.org
- ★ **Sarah Zielinski**, Assistant Director, ECSE
  - sarah.zielinski@spps.org



To refer a child contact **Help Me Grow** at 1-866-693-4769  
<https://helpmegrowmn.org>



**ECSE Services are  
provided at no cost to  
families**