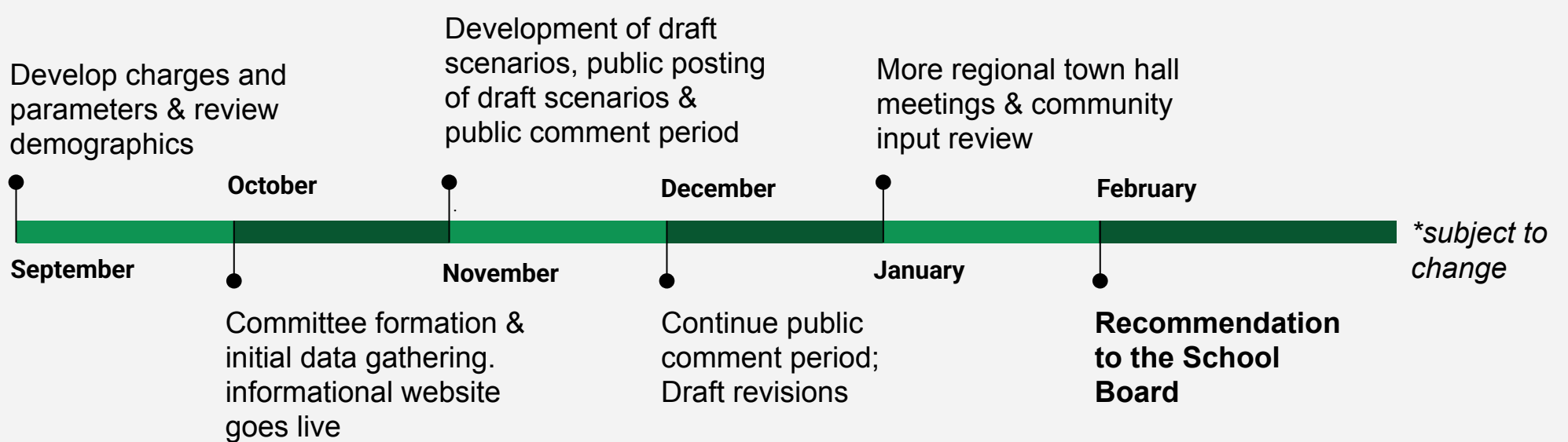


Why Rezone?

GISD will update school attendance boundaries for the 2026–2027 school year to prepare for the opening of two new campuses (Elementary School No. 12 & Middle School No. 5) in the southeast quadrant, relieve overcrowding, and accommodate our growing student population.

Timeline



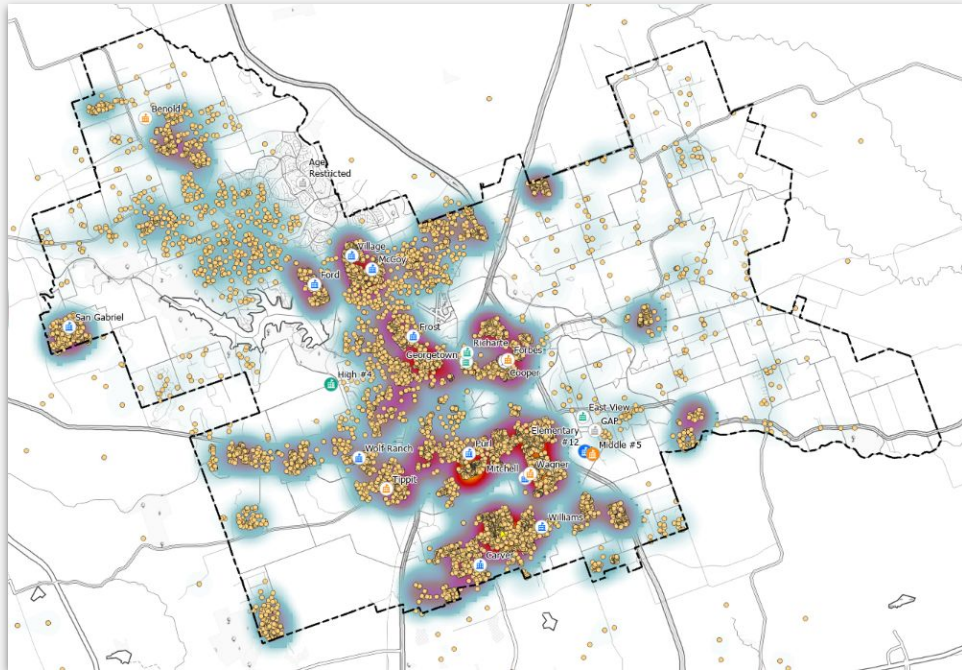
Commitments

- Draft attendance zones that support ongoing financial health and academic achievement for the next 10 years;
- Minimize future attendance zone changes for the same students;
- Allow us to best serve the needs of our students and families; and
- Help us be great stewards of district resources.

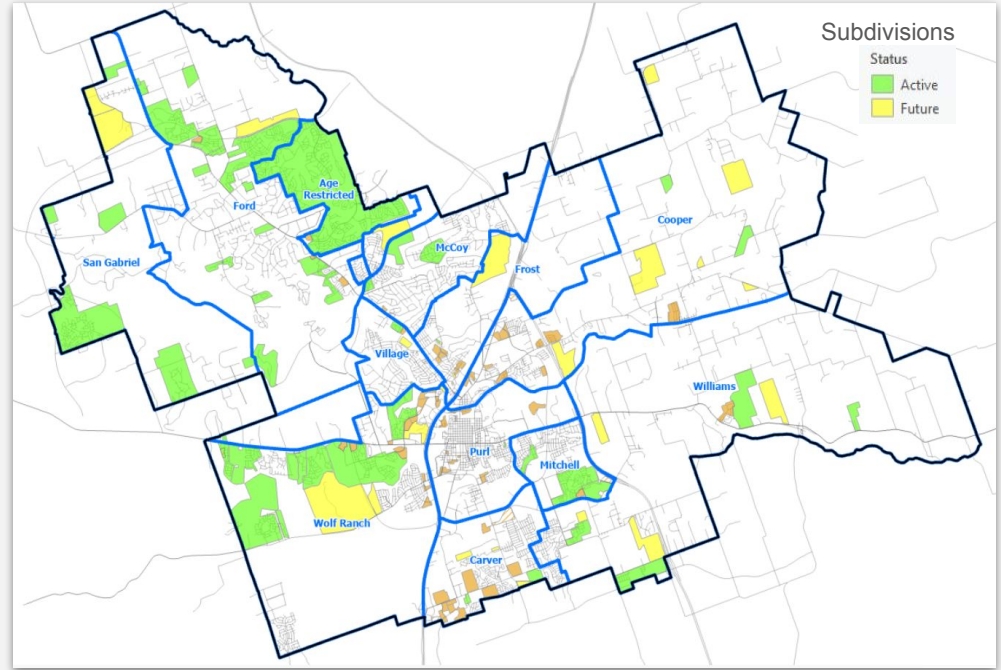


REFERENCE MAPS: GISD Boundaries and Attendance Zones

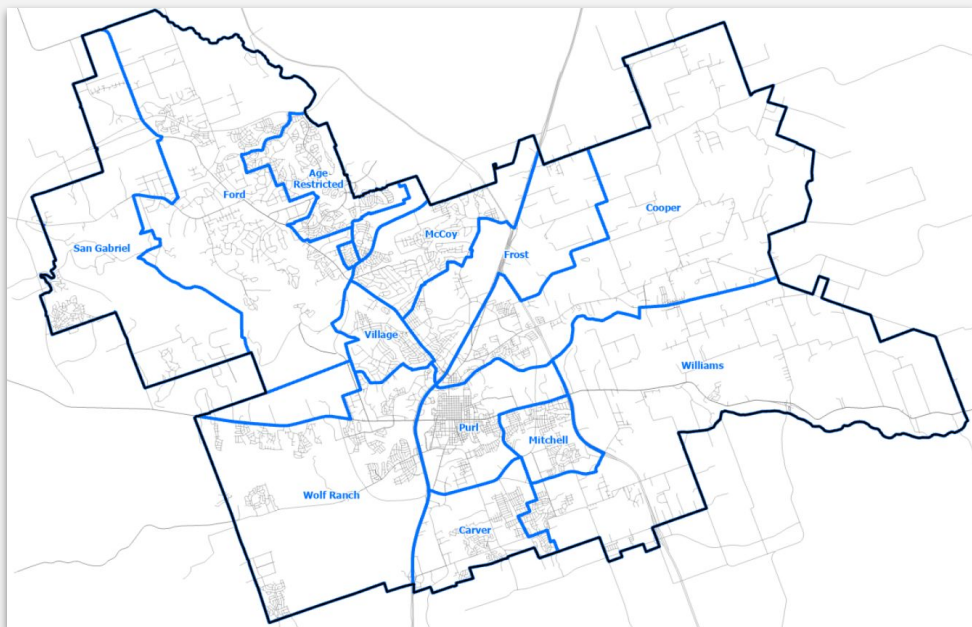
The maps on **this page** show *current* district information and are for reference purposes. Rezoning Proposals start on the **next page**.



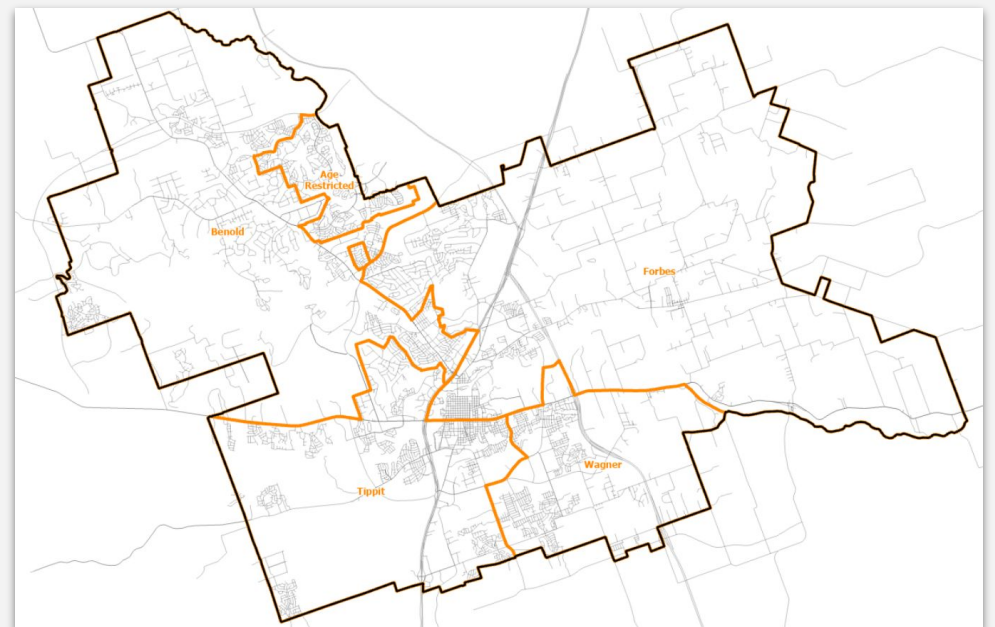
The above map shows the **density of student residences** (homes and multi-family)



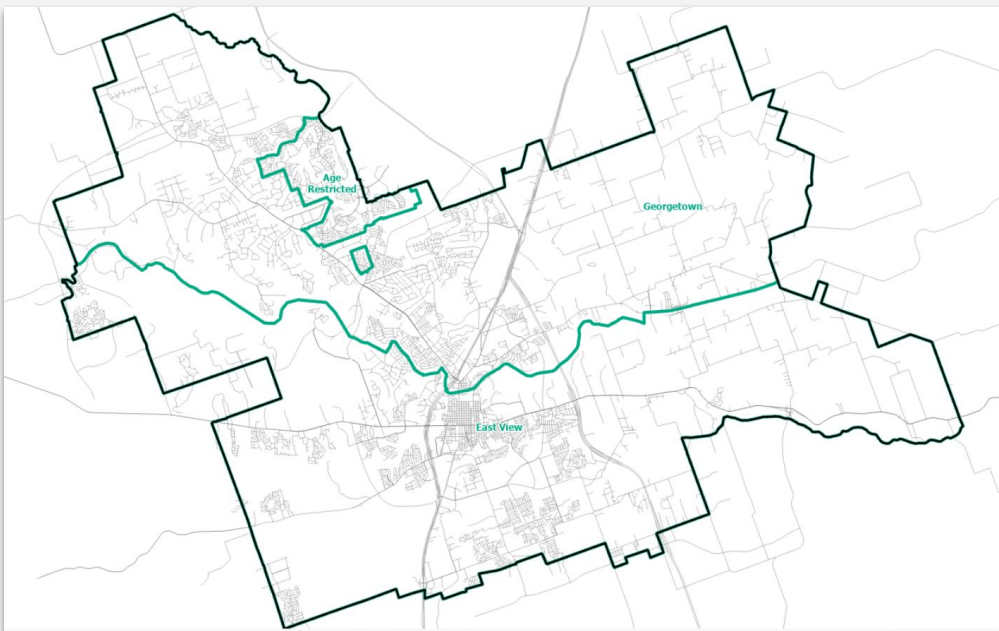
The above map shows most **active and future subdivision developments** (with Elementary zones for reference)



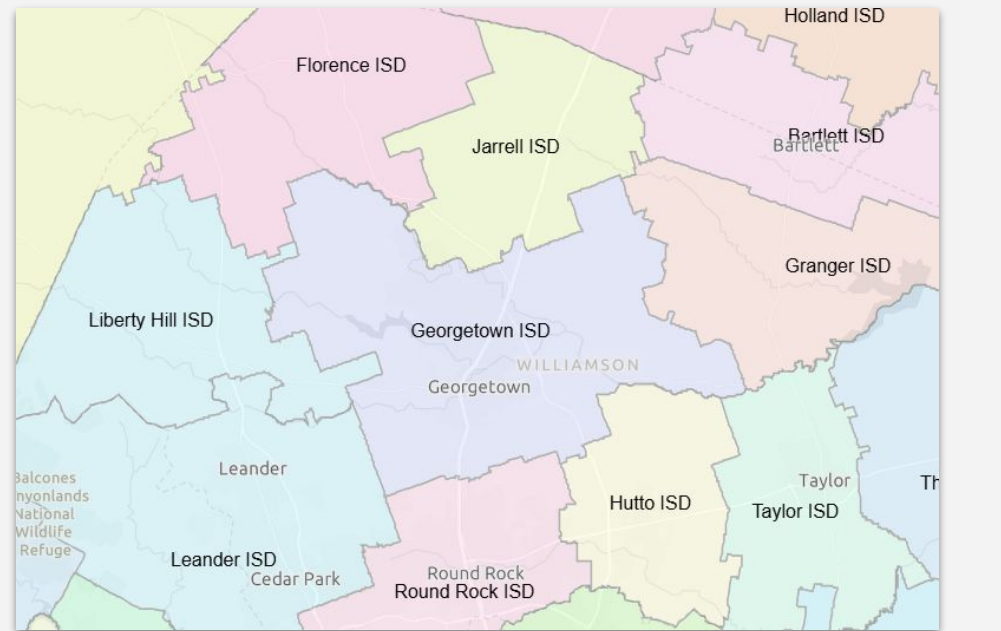
The above map shows *current* **elementary school attendance zone boundaries** (blue)



The above map shows *current* **middle school attendance zone boundaries** (orange)



The above map shows *current* **high school attendance zone boundary** (green)
HIGH SCHOOL ZONES ARE NOT CHANGING

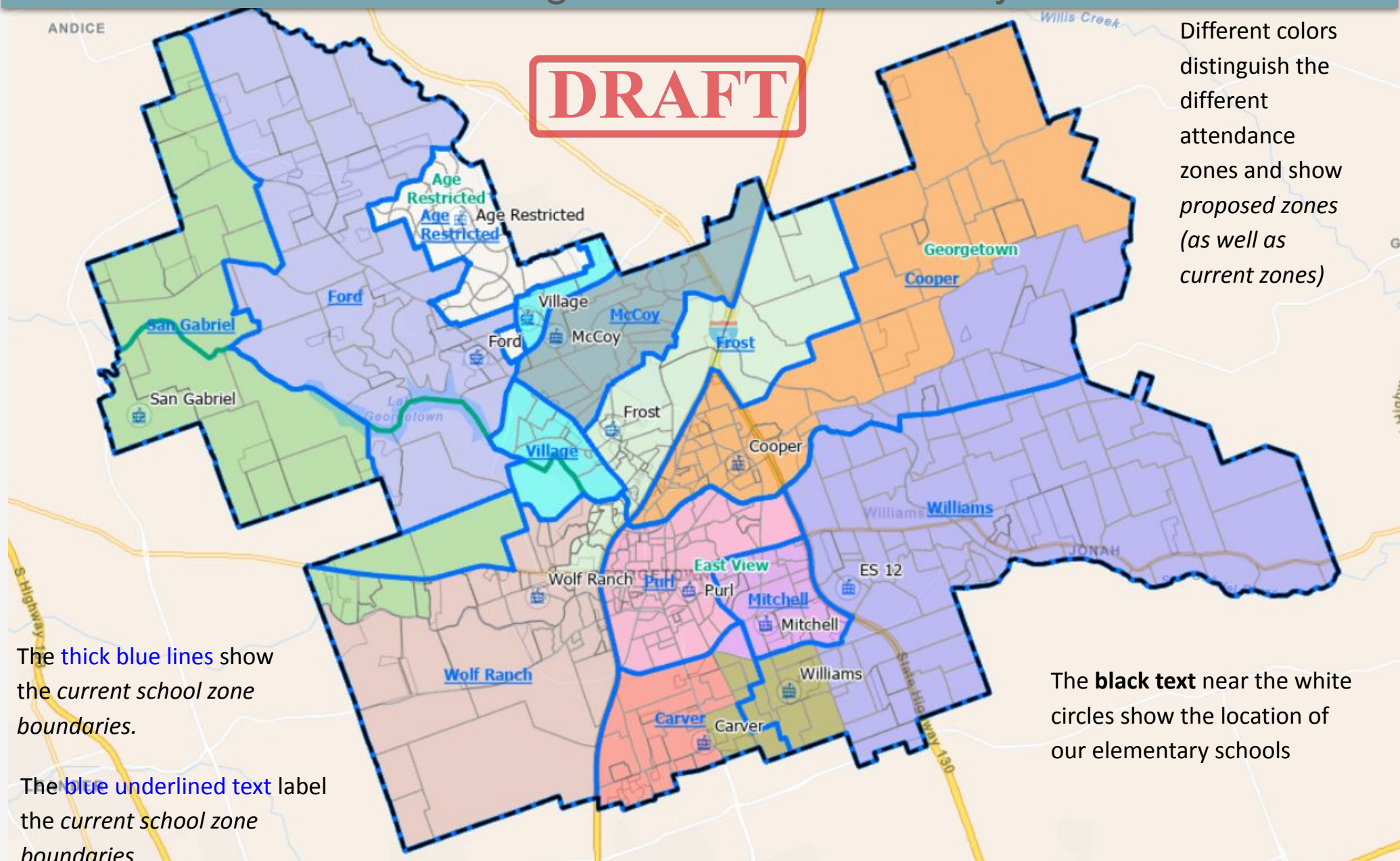


The above map shows the location of neighboring school districts to GISD

Elementary Attendance Zone Proposal

2A

Rezoning Scenario - Elementary



Georgetown Independent School District Forecast (Attend) | Elementary | 2025 Elementary

NOW: Current Year Data

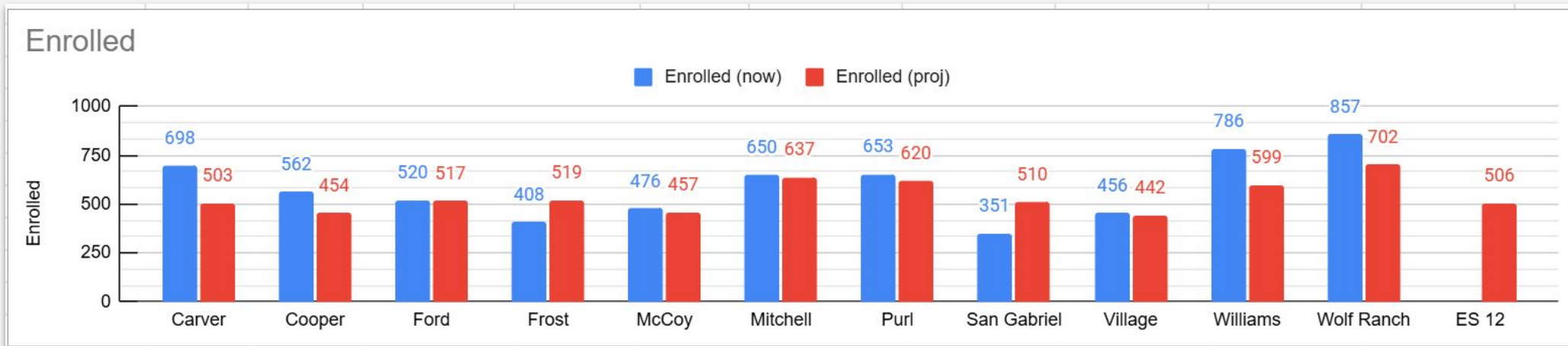
CODE	SCHOOL	CAPACITY	2026/27	2027/28	2028/29	2029/30	2030/31	2031/32	2032/33	2033/34	2034/35	2035/36
102	Carver	890	703	705	714	715	726	730	738	749	761	777
104	Cooper	693	534	553	568	588	616	650	690	731	764	799
109	Ford	836	517	512	512	530	534	552	577	603	628	662
103	Frost	850	406	400	392	381	387	397	408	420	433	447
106	McCoy	808	457	441	437	445	450	454	465	473	482	492
110	Mitchell	792	637	630	647	628	615	618	622	628	629	629
101	Purl	869	620	594	581	566	558	553	551	552	556	557
112	San Gabriel	850	378	406	429	438	436	462	497	531	566	605
107	Village	633	442	423	408	425	437	447	455	463	467	474
111	Williams	850	825	869	934	1,003	1,088	1,173	1,276	1,354	1,444	1,546
105	Wolf Ranch	850	947	1,049	1,150	1,257	1,346	1,446	1,505	1,546	1,595	1,625

Georgetown Independent School District Forecast (Attend) | Elementary | ES_2A

NEW: Rezoned Data

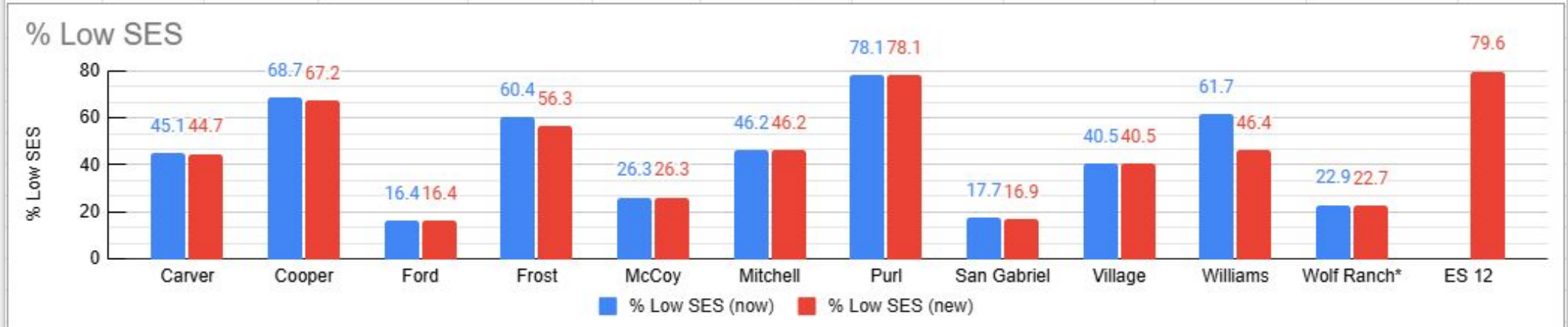
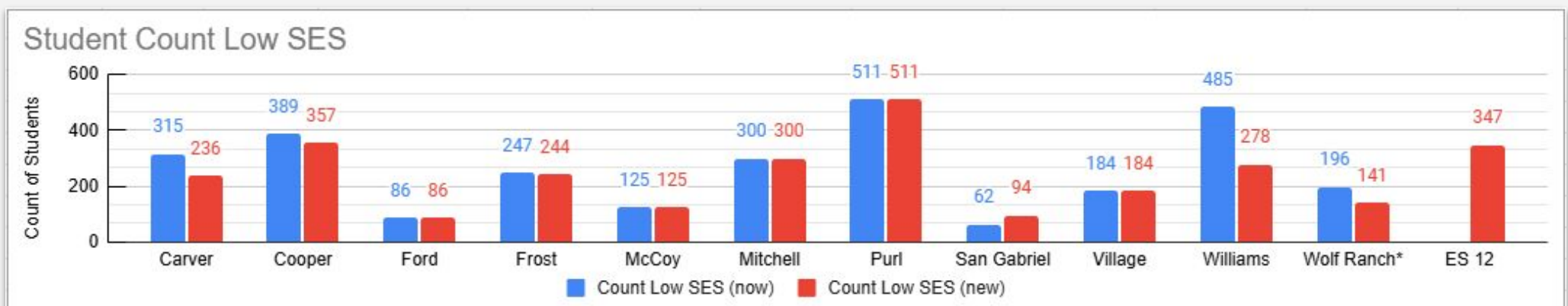
CODE	SCHOOL	CAPACITY	2026/27	2027/28	2028/29	2029/30	2030/31	2031/32	2032/33	2033/34	2034/35	2035/36
102	Carver	890	503	505	509	504	511	516	523	533	543	555
104	Cooper	693	454	470	486	508	538	573	613	654	687	721
120	ES 12	850	506	546	616	706	789	869	957	1,027	1,093	1,164
109	Ford	836	517	512	512	530	534	552	577	603	628	662
103	Frost	850	519	526	537	547	560	585	608	621	636	650
106	McCoy	808	457	441	437	445	450	454	465	473	482	492
110	Mitchell	792	637	630	647	628	615	618	622	628	629	629
101	Purl	869	620	594	581	566	558	553	551	552	556	557
112	San Gabriel	850	510	554	584	595	595	623	661	696	732	771
107	Village	633	442	423	408	425	437	447	455	463	467	474
111	Williams	850	599	606	605	588	592	595	611	621	647	681
105	Wolf Ranch	850	702	775	850	934	1,014	1,096	1,142	1,180	1,226	1,256
TOTAL		9,771	6,466	6,582	6,772	6,976	7,193	7,482	7,784	8,050	8,325	8,613

Rezoning Scenario - Elementary



The above graphs show comparisons for current and projected student enrollments

1. The blue bars show the *current students (as of Oct)*
2. The red bars show projected enrollments for fall 2026 resulting from *this scenario using demographer's projection data*
3. Projected enrollments use housing data statistics, and other research to forecast likely enrollment. The actual enrollment will vary depending on variables such as the housing market and school choice competition.



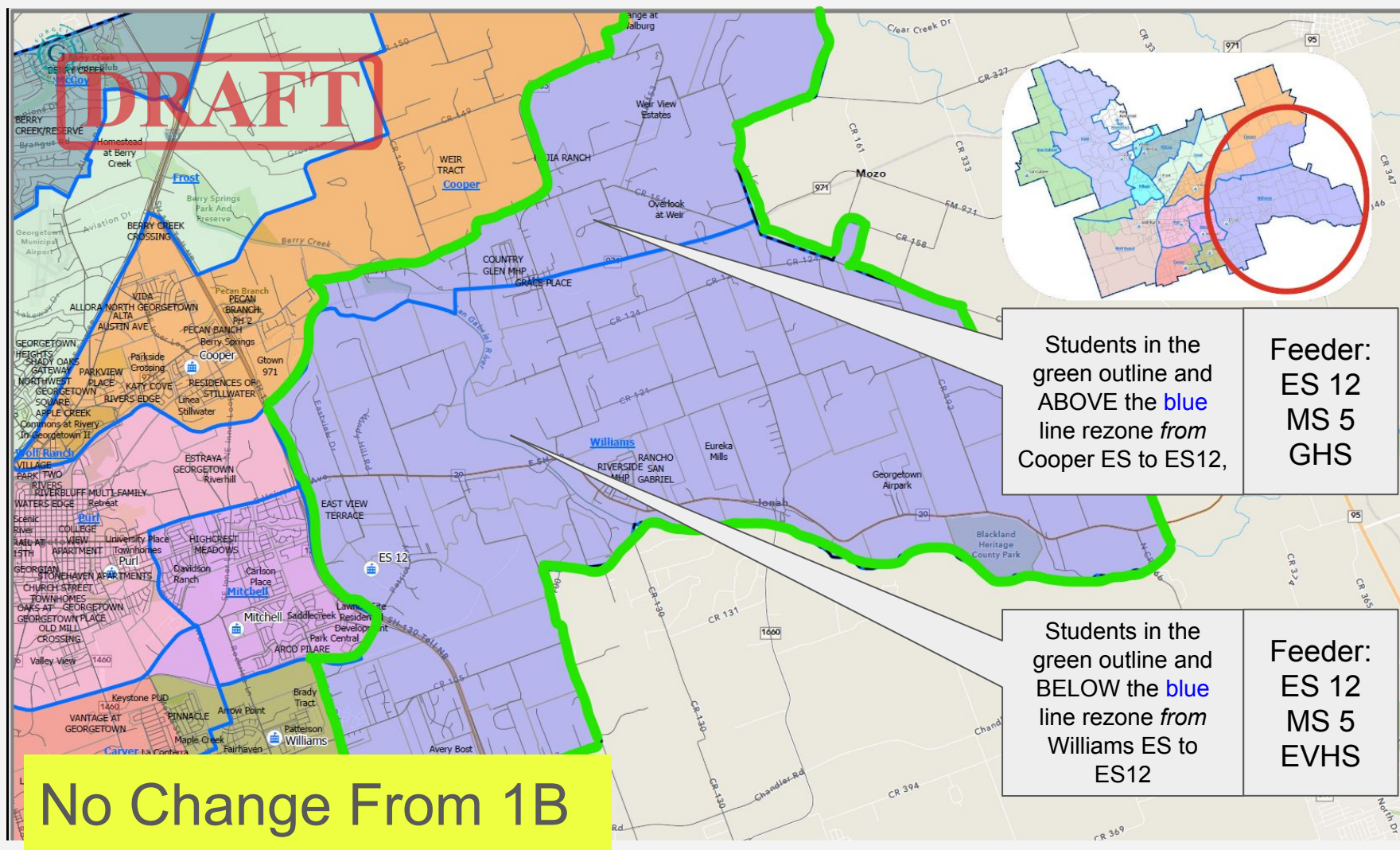
The above graphs show comparisons for current and proposed student enrollments

1. The blue bars show the *current students (as of Oct)*
2. The red bars show the *current students (as of Oct)* and estimated changes resulting from *proposed rezoning*
3. Note: the model shows representative data using today's students for a close approximation of enrollment for 2026-2027

NOTE: With regards to Wolf Ranch, Cooper and Frost on the Low SES chart above - In the current school year, PreK students from Wolf Ranch and Cooper attend school at Frost and are still counted in the blue bar (now). The red bar (new) shows PreK returned to Wolf Ranch and Cooper for next year.

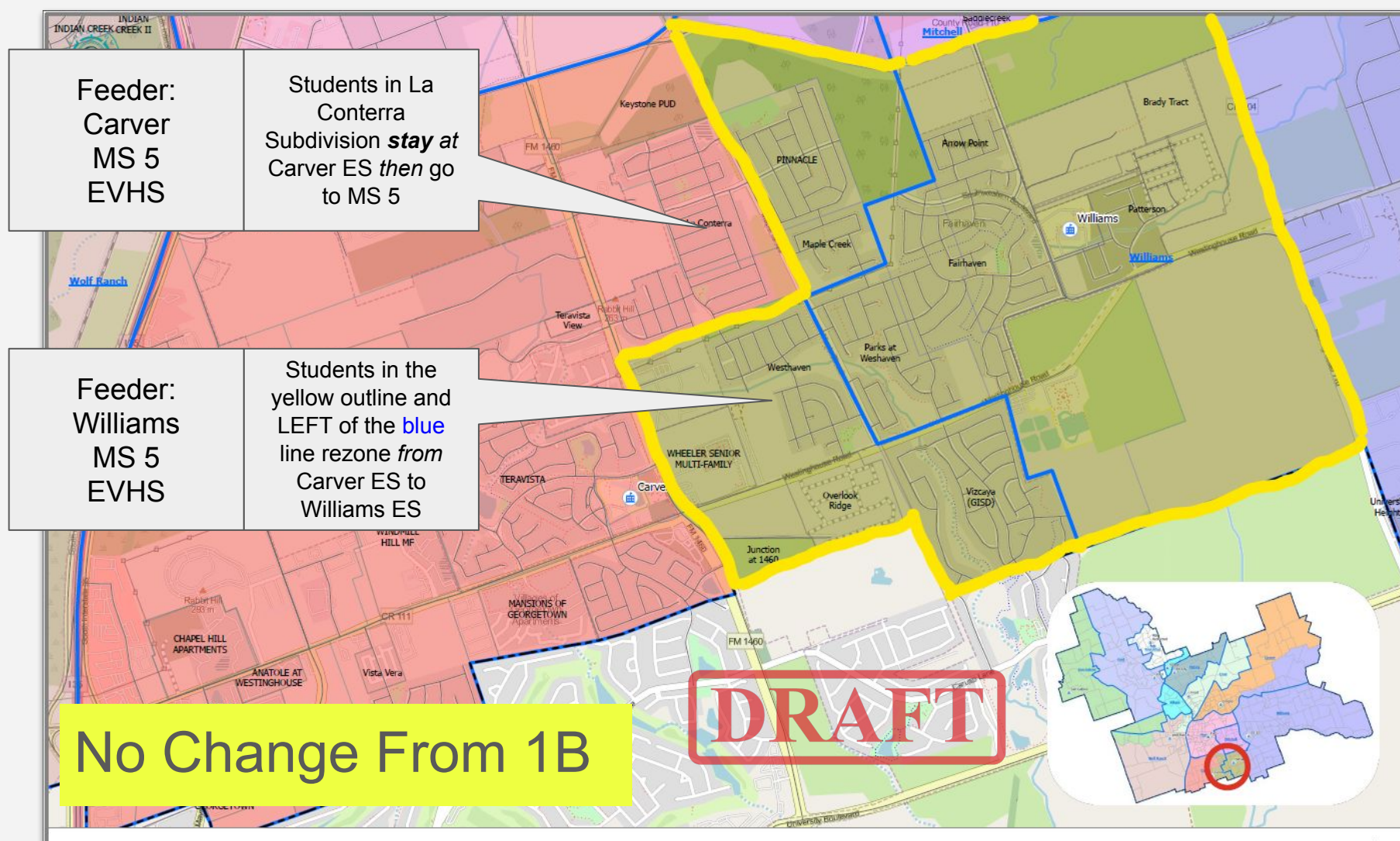
Elementary Attendance Zone Proposal

2A



The above map shows the proposed attendance zone for the **New Elementary School #12**

1. The red circle on the mini-map located in the corner shows to where this area is in the district
2. The area outlined in green is the proposed zone

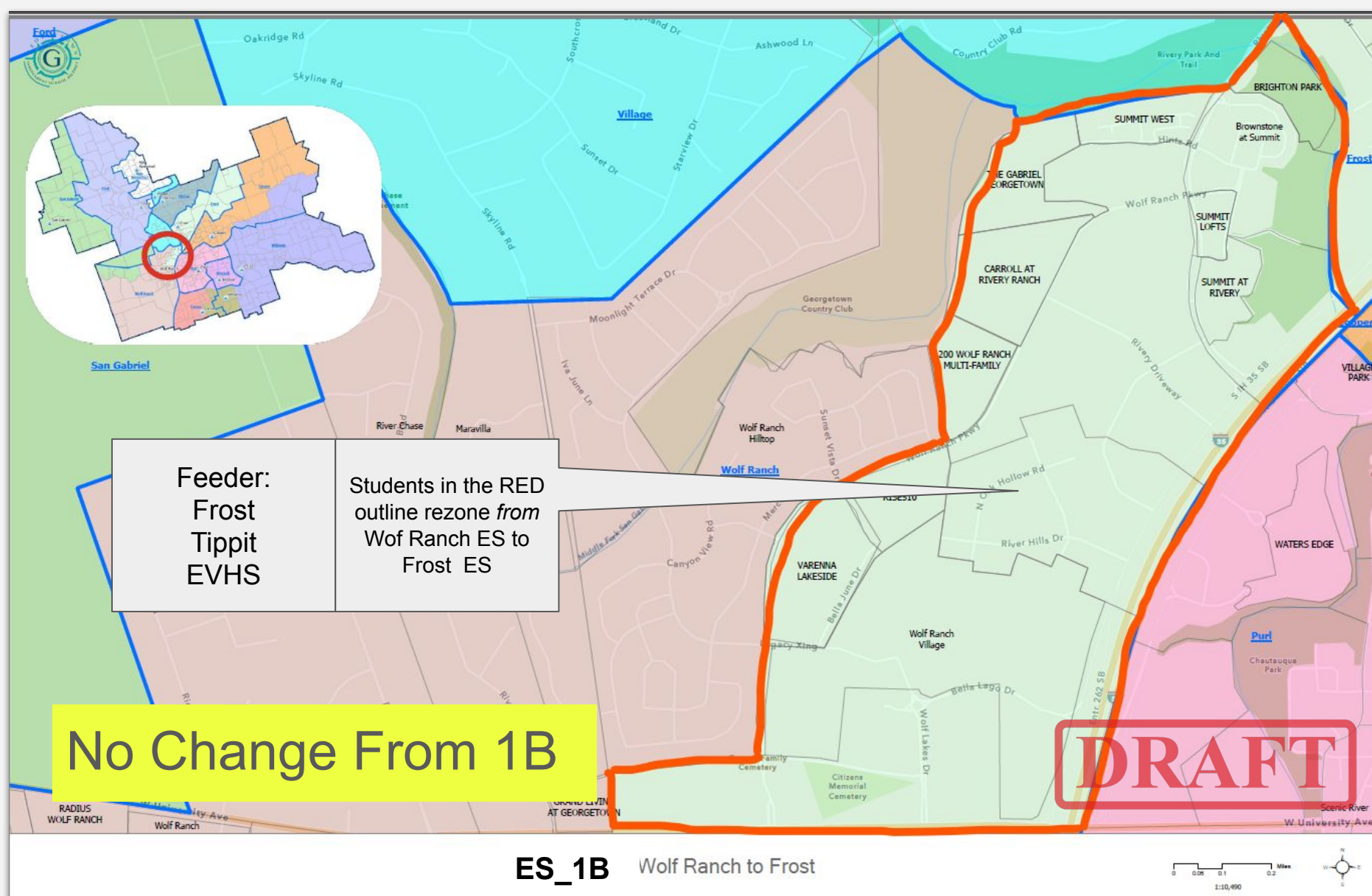


The above map shows the proposed attendance zone for areas of **Carver and Williams Elementary Schools**

1. Proposes rezoning from Carver to Williams the neighborhoods of **Pinnacle, Maple Creek, Westhaven, Overlook Ridge and Vizcaya**
2. The red circle on the mini-map located in the corner shows to where this area is in the district
3. The area outlined in yellow is the proposed zone for Williams

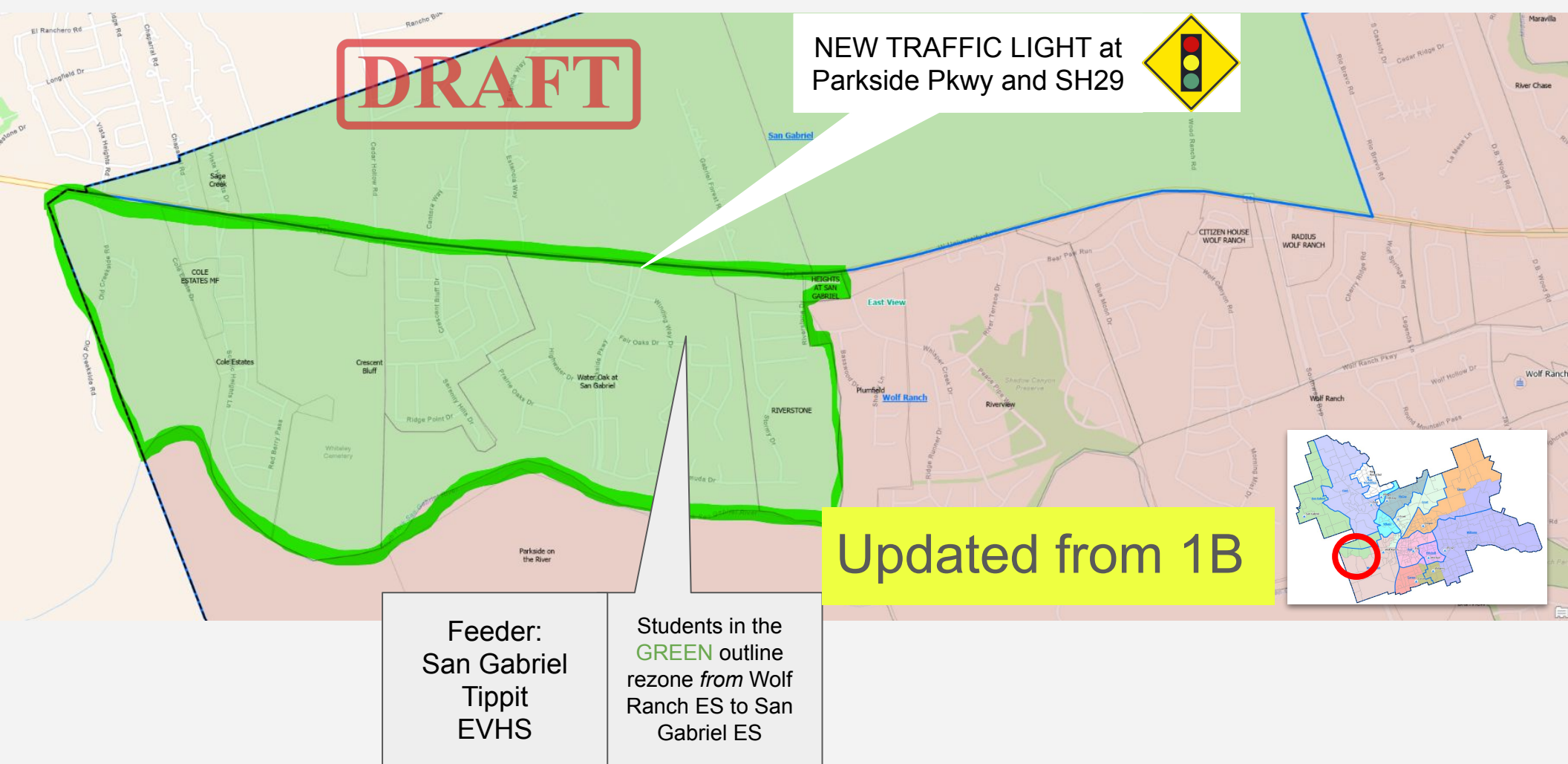
Elementary Attendance Zone Proposal

2A



The above map shows the proposed attendance zone for and area of **Wolf Ranch to Frost Elementary Schools**

1. Proposed rezoning from Wolf Ranch area to Frost Elementary
2. The **red circle** on the mini-map located in the corner shows to where this area is in the district
3. The area outlined in **red** is the proposed area to zone to Frost Elementary



The above map shows the proposed attendance zone change from **Wolf Ranch to San Gabriel Elementary**

1. Proposed rezoning from Wolf Ranch area to San Gabriel Elementary
2. The **red circle** on the mini-map located in the corner shows to where this area is in the district
3. The area outlined in **green** is the proposed area to zone to San Gabriel
4. A new traffic light is expected at Parkside Parkway and Highway 29 in summer of 2026 to facilitate left turns

Summary of what changed between 1B and 2A

1. The neighborhoods of Riverview and Plumfield in the Wolf Ranch Zone remain at Wolf Ranch in this Scenario.
2. This change results in capacity concerns at Wolf Ranch within 3 years and will require more rezoning or construction of a new Elementary in the Southwest quadrant.
3. Forecast information is updated to reflect slight changes in predicted enrollments over 10 years.

Community Meetings

All meetings are at 6PM

- November 10 – Wagner MS
- November 13 – San Gabriel ES
- December 9 – Wolf Ranch ES
- December 11 – Williams ES
- January 28 – Carver ES
- January 29 – Tippit MS
- February 5 – Purl ES

