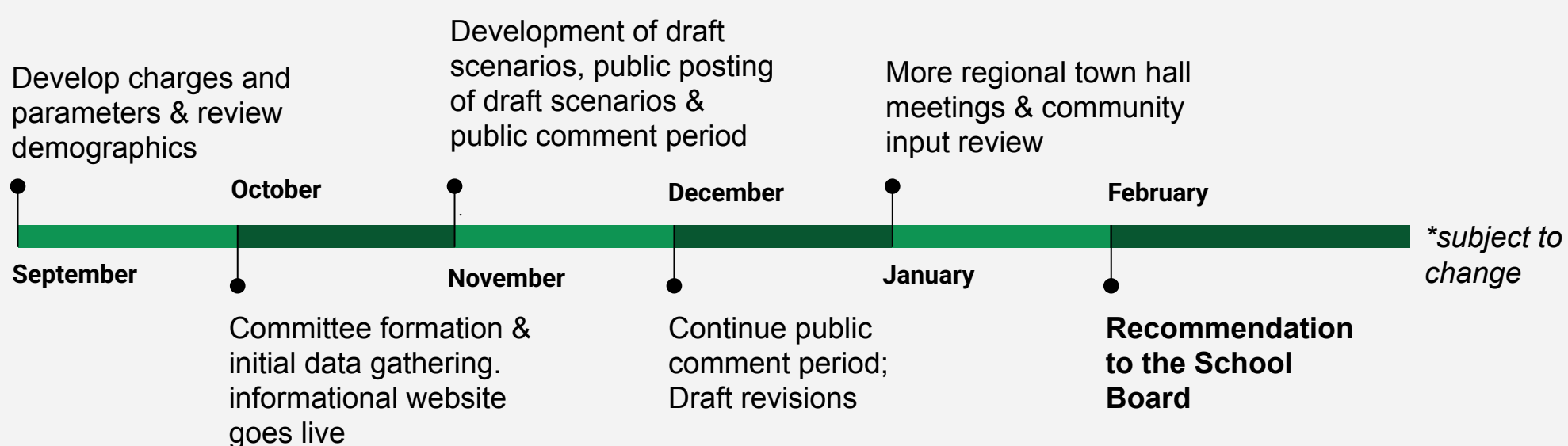


Why Rezone?

GISD will update school attendance boundaries for the 2026–2027 school year to prepare for the opening of two new campuses (Elementary School No. 12 & Middle School No. 5) in the southeast quadrant, relieve overcrowding, and accommodate our growing student population.

Timeline



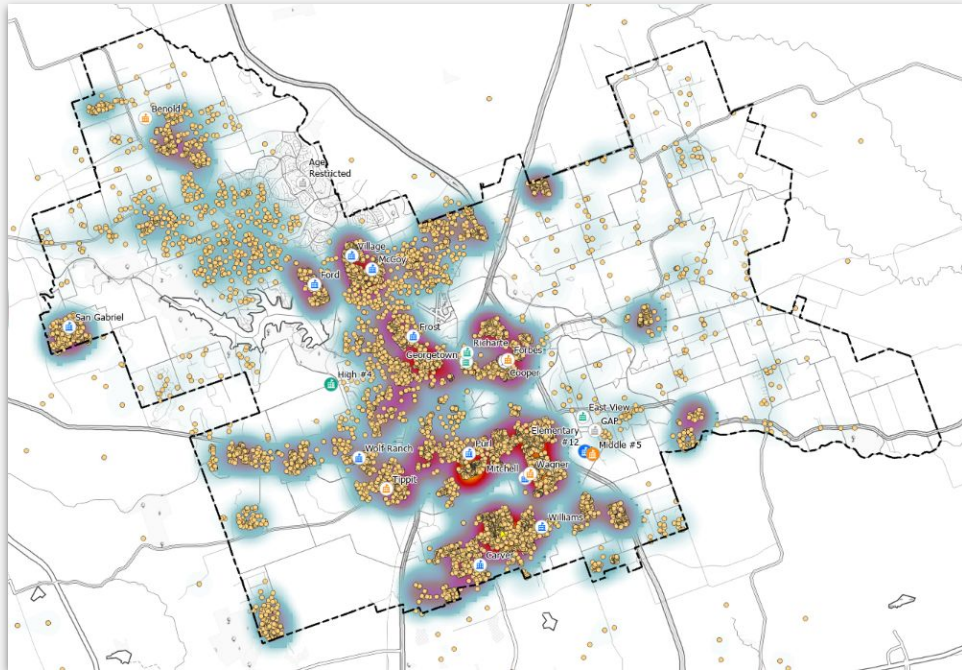
Commitments

- Draft attendance zones that support ongoing financial health and academic achievement for the next 10 years;
- Minimize future attendance zone changes for the same students;
- Allow us to best serve the needs of our students and families; and
- Help us be great stewards of district resources.

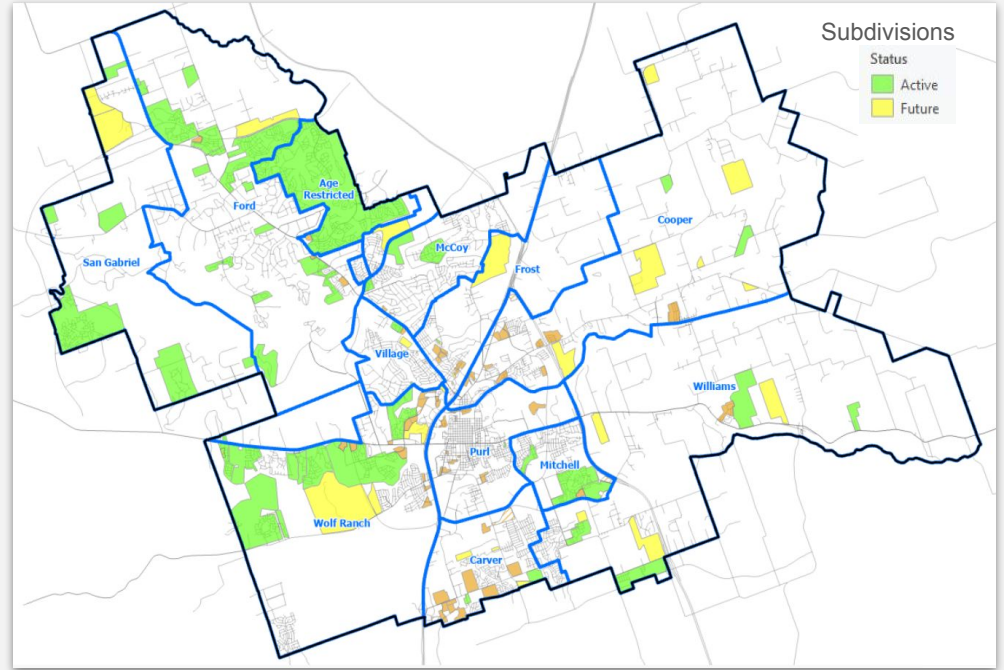


REFERENCE MAPS: GISD Boundaries and Attendance Zones

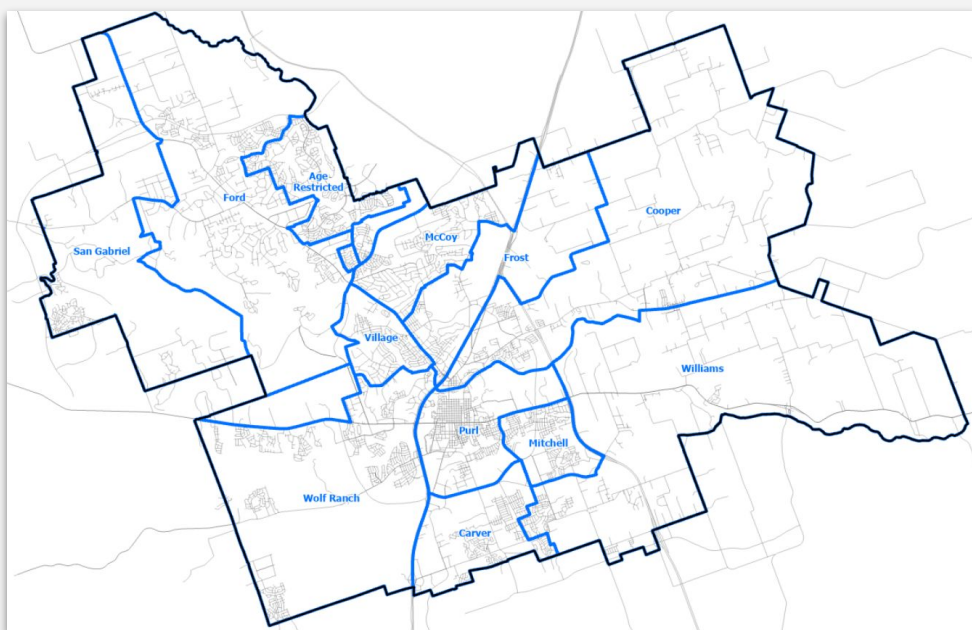
The maps on **this page** show *current* district information and are for reference purposes. Rezoning Proposals start on the **next page**.



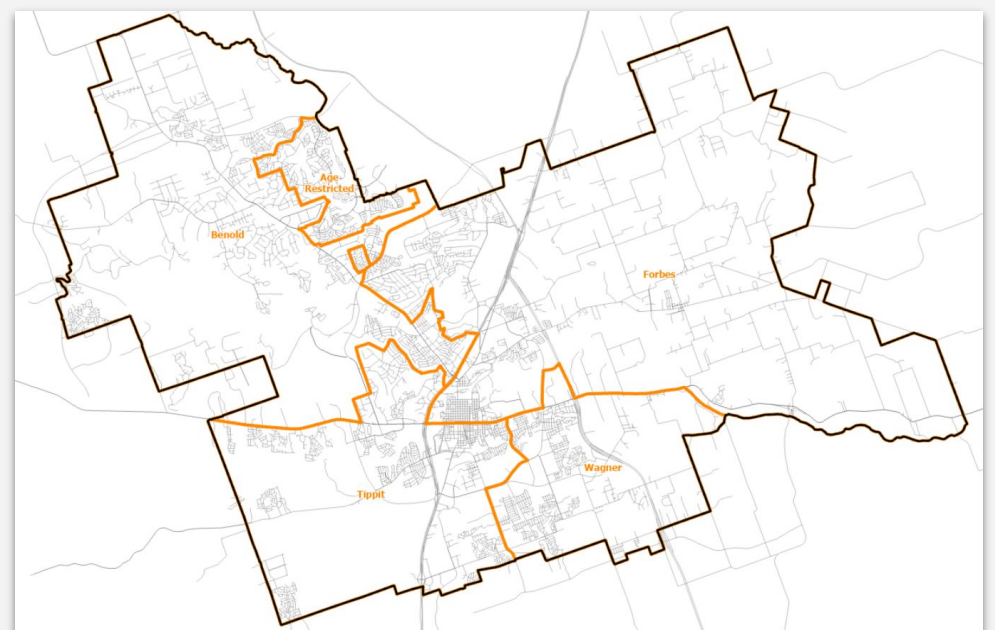
The above map shows the **density of student residences** (homes and multi-family)



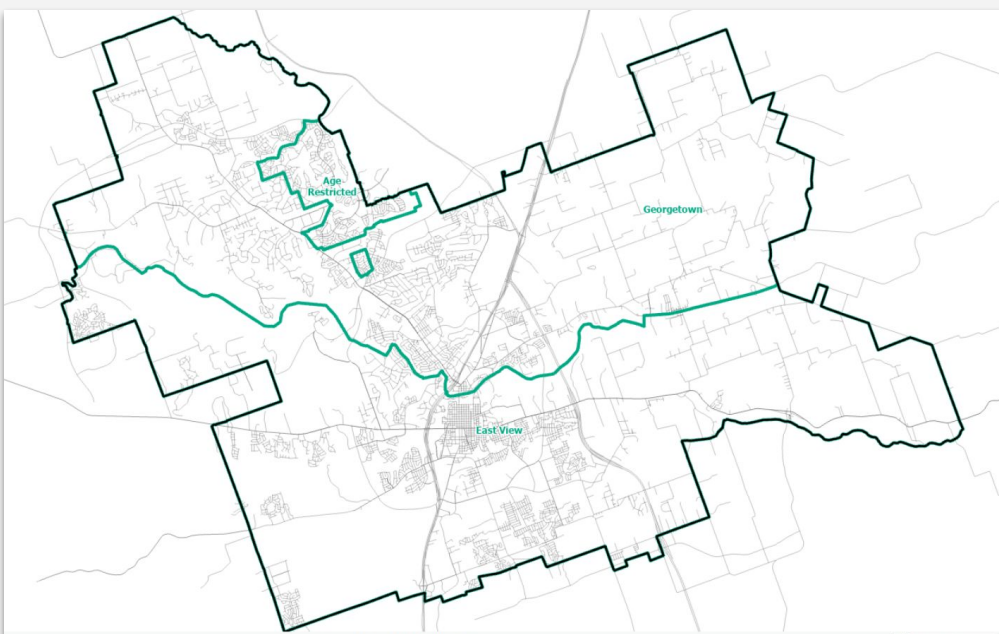
The above map shows most **active and future subdivision developments** (with Elementary zones for reference)



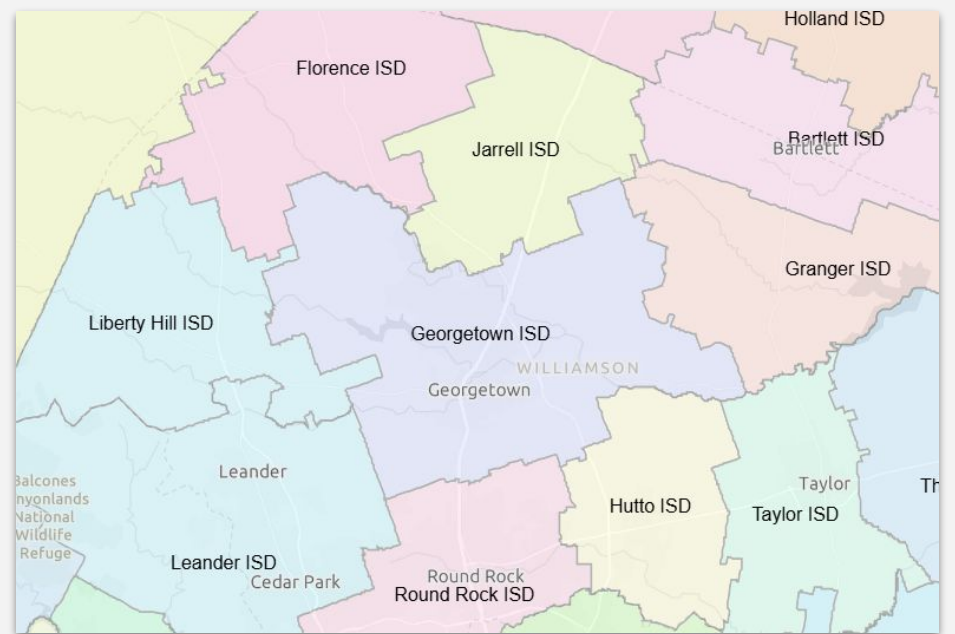
The above map shows *current elementary school attendance zone boundaries* (blue)



The above map shows *current middle school attendance zone boundaries* (orange)

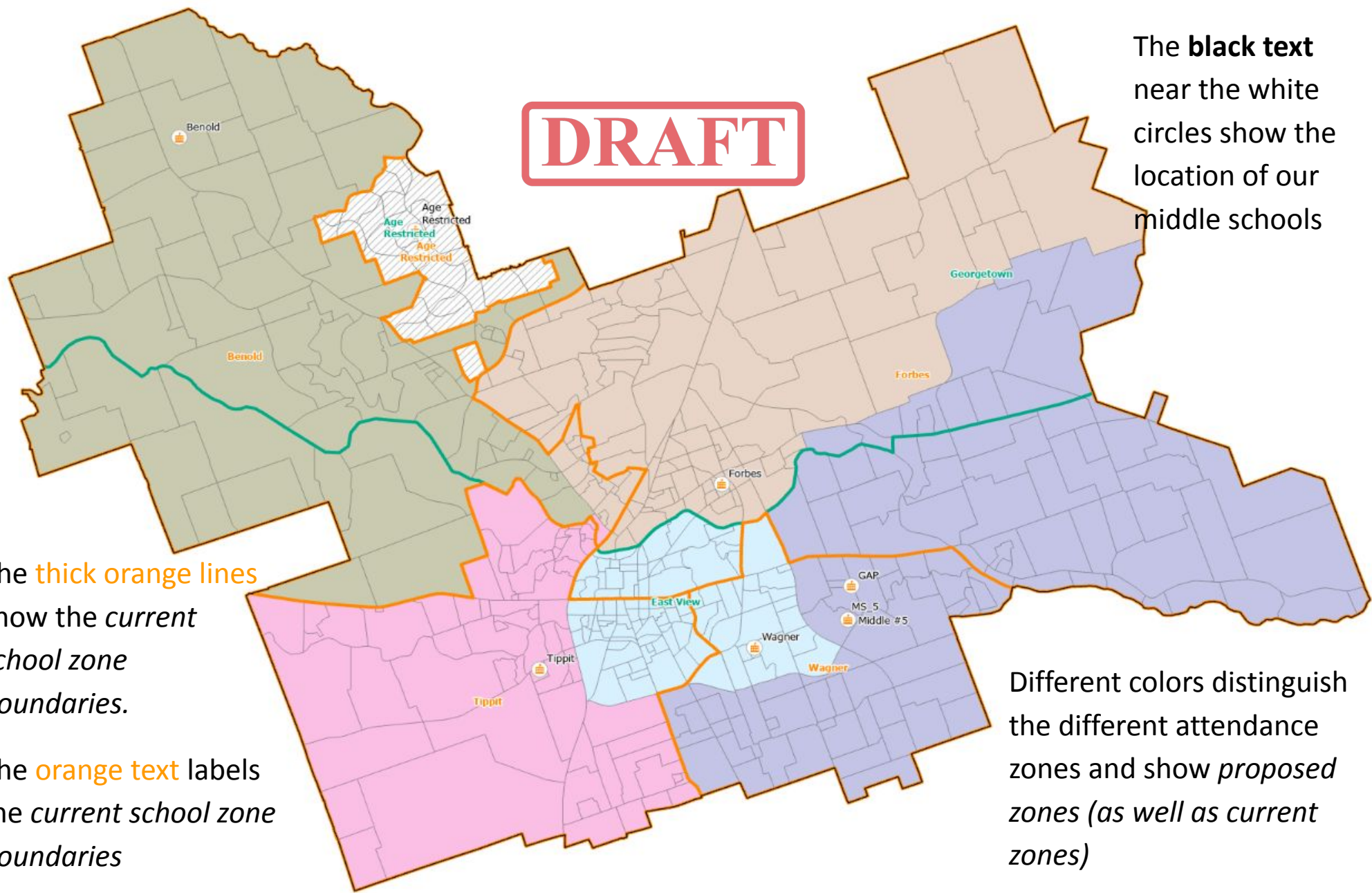


The above map shows *current high school attendance zone boundary* (green)



The above map shows the location of neighboring school districts to GISD

DRAFT



The **black text** near the white circles show the location of our middle schools

The **thick orange lines** show the *current school zone boundaries*.

The **orange text** labels the *current school zone boundaries*

Different colors distinguish the different attendance zones and show *proposed zones (as well as current zones)*

10 Year Projection Forecast

Georgetown Independent School District Forecast (Attend) | Middle | 2025 Middle

NOW: Current Year Data

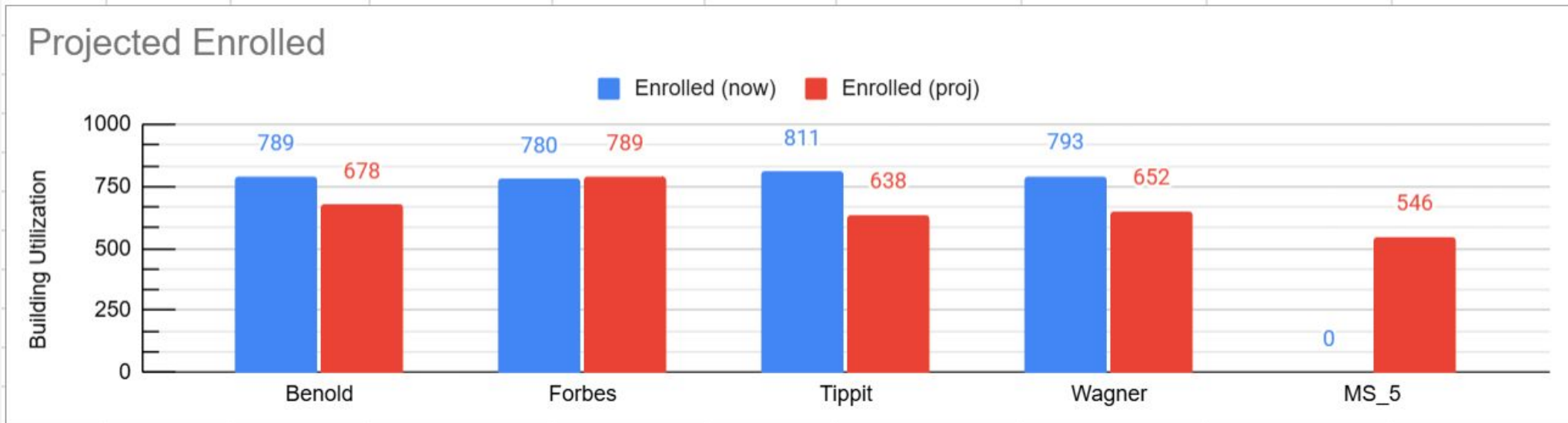
CODE	SCHOOL	CAPACITY	2026/27	2027/28	2028/29	2029/30	2030/31	2031/32	2032/33	2033/34	2034/35	2035/36
040	Benold	950	828	884	933	937	940	904	906	874	896	934
042	Forbes	950	783	792	804	780	774	775	781	799	826	860
041	Tippet	850	889	942	964	971	1,019	1,096	1,153	1,190	1,202	1,216
045	Wagner	950	804	826	793	821	847	896	890	901	931	966
TOTAL		3,700	3,304	3,444	3,494	3,509	3,580	3,671	3,730	3,764	3,855	3,976

Georgetown Independent School District Forecast (Attend) | Middle | MS_2A

NEW: Rezoned Data

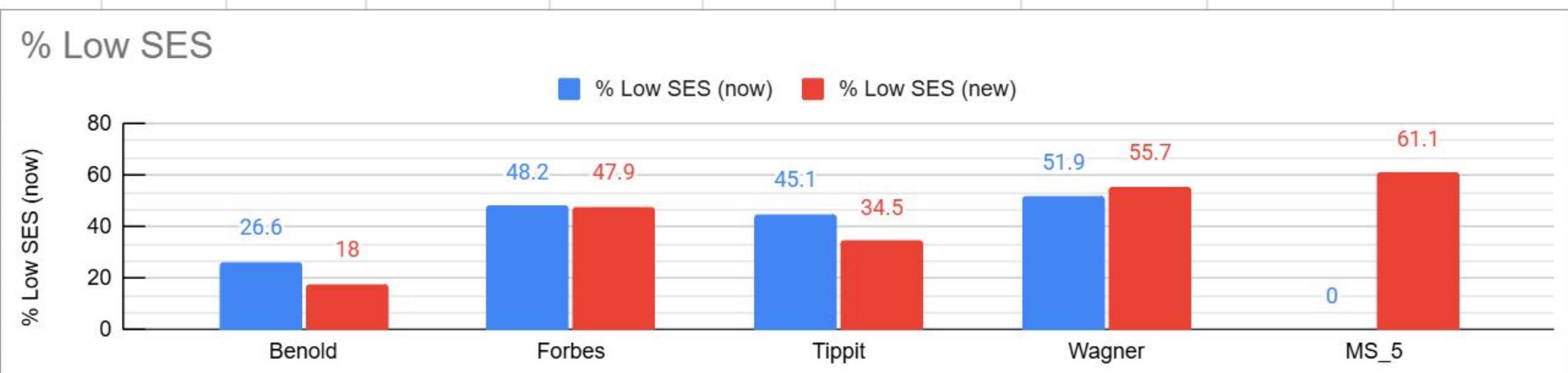
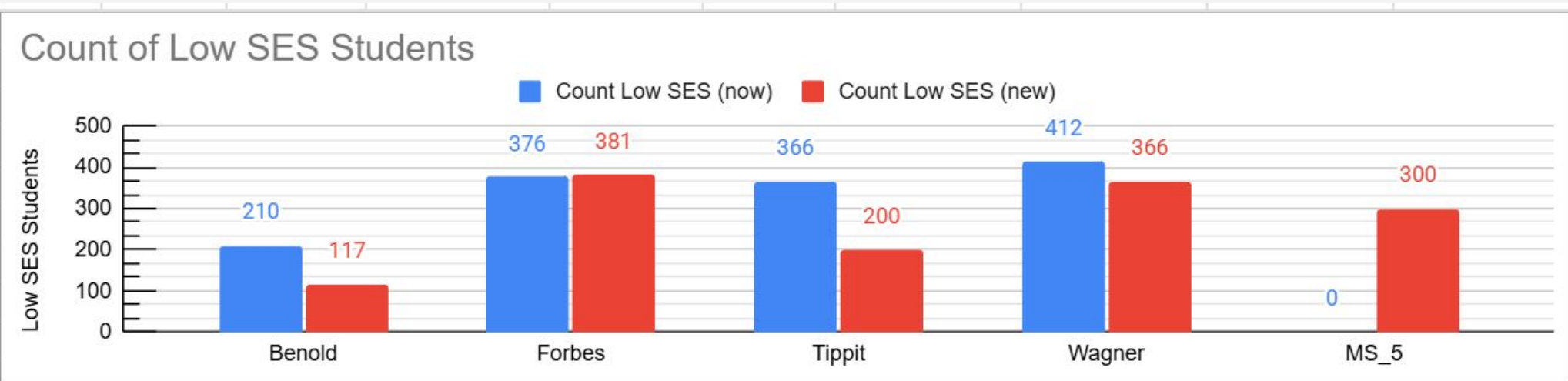
CODE	SCHOOL	CAPACITY	2026/27	2027/28	2028/29	2029/30	2030/31	2031/32	2032/33	2033/34	2034/35	2035/36
040	Benold	950	678	733	779	790	802	779	787	765	789	826
042	Forbes	950	789	789	794	760	746	729	723	729	751	783
000	MS_5	950	546	571	573	611	643	693	712	739	769	800
041	Tippet	850	638	693	725	744	790	860	910	943	957	972
045	Wagner	950	652	658	623	605	599	610	598	588	590	595
TOTAL		4,650	3,304	3,444	3,494	3,509	3,580	3,671	3,730	3,764	3,855	3,976

Rezoning Scenario - Middle School



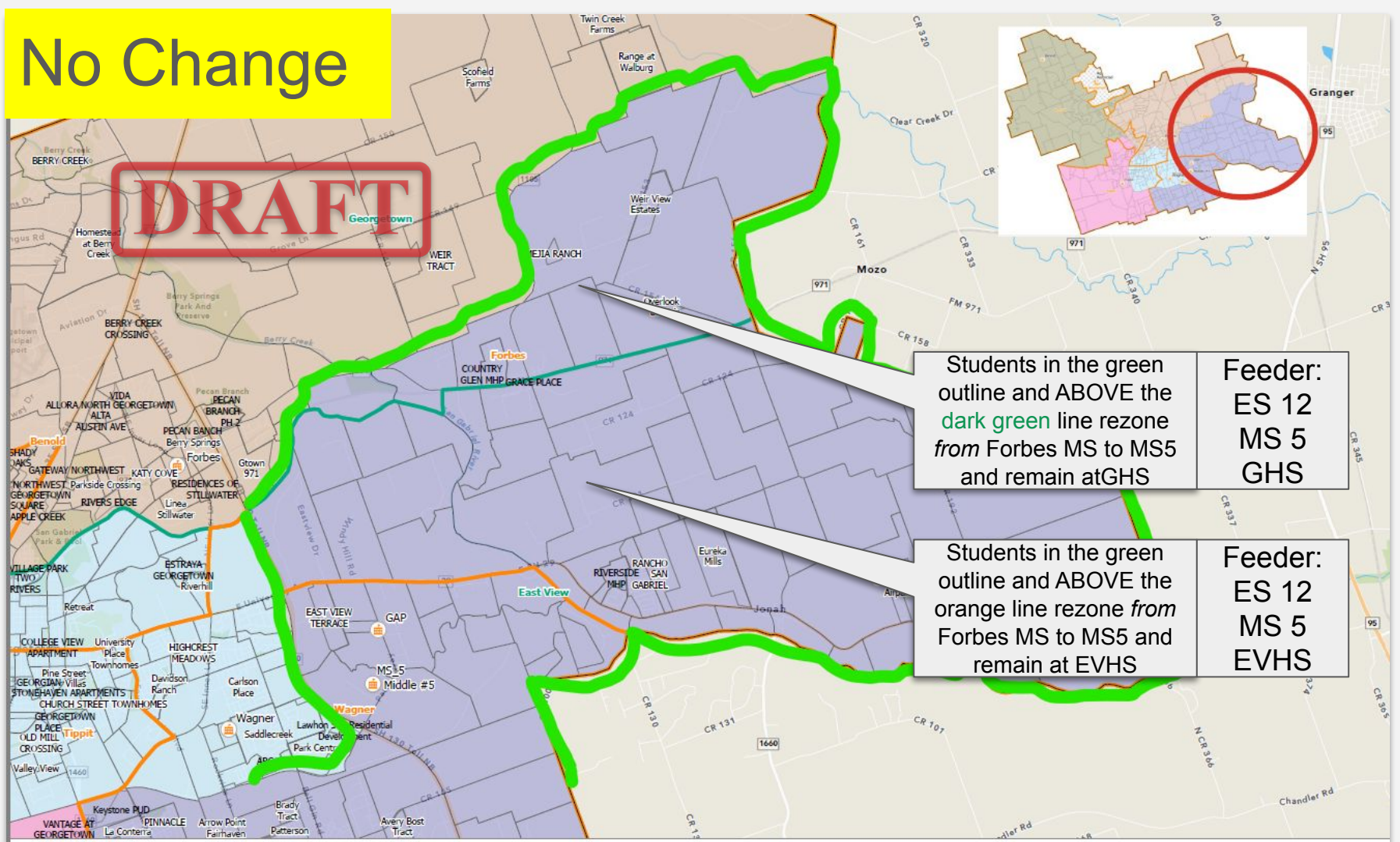
The above graphs show comparisons for current and projected student enrollments

1. The **blue bars** show the *current students (as of Oct)*
2. The **red bars** show projected enrollments for fall 2026 resulting from *this scenario using demographer's projection data*
3. Projected enrollments use housing data statistics, and other research to forecast likely enrollment. The actual enrollment will vary depending on variables such as the housing market and school choice competition.



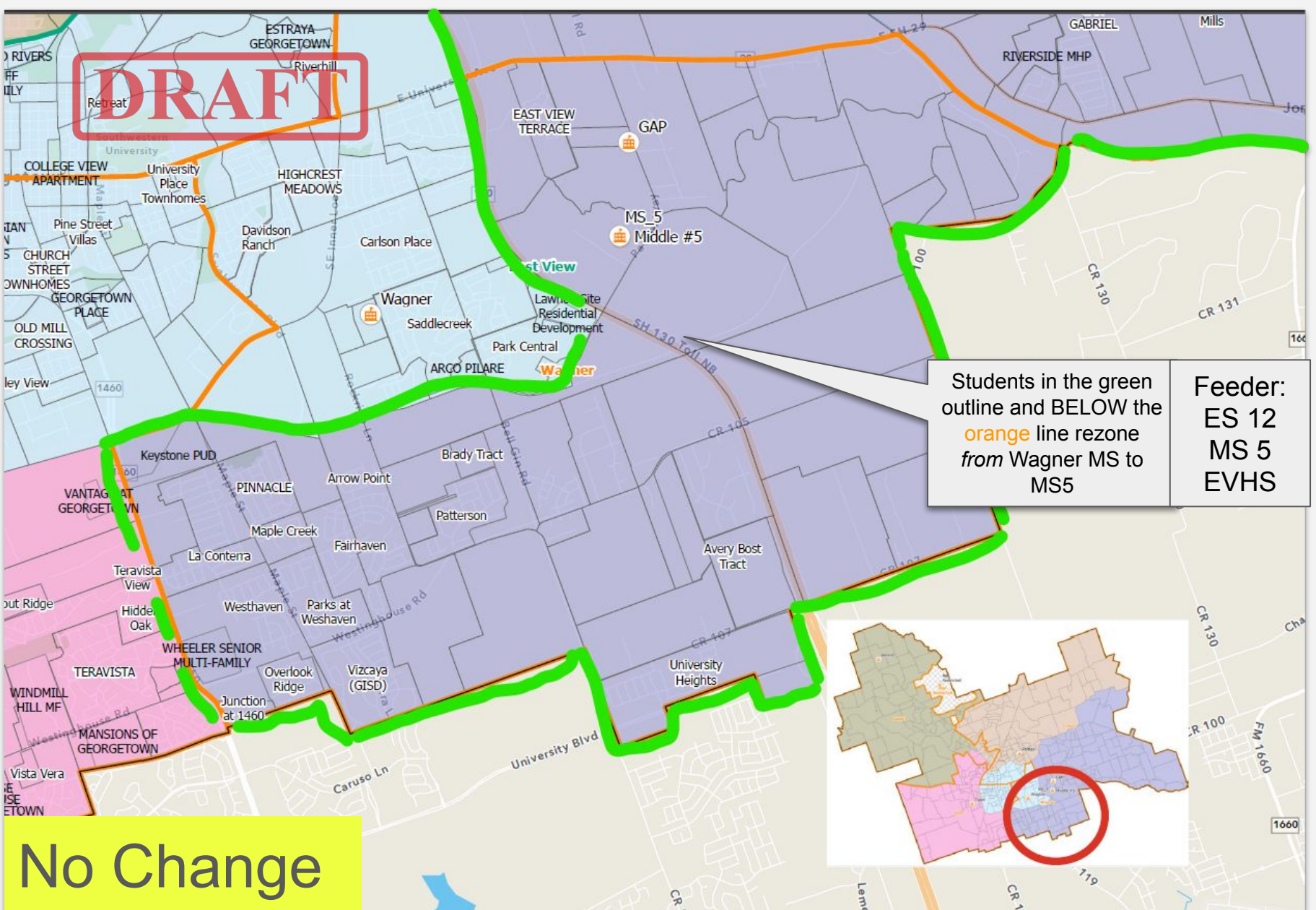
The above graphs show comparisons for current and proposed student low socioeconomic (SES) makeup.

1. The **blue bars** show the *current students (as of Oct)*
2. The **red bars** show the *current students (as of Oct)* and estimated changes resulting from *proposed rezoning*
3. Note: the model shows *current students* rezoned which provides a close approximation forecast to next Fall's students



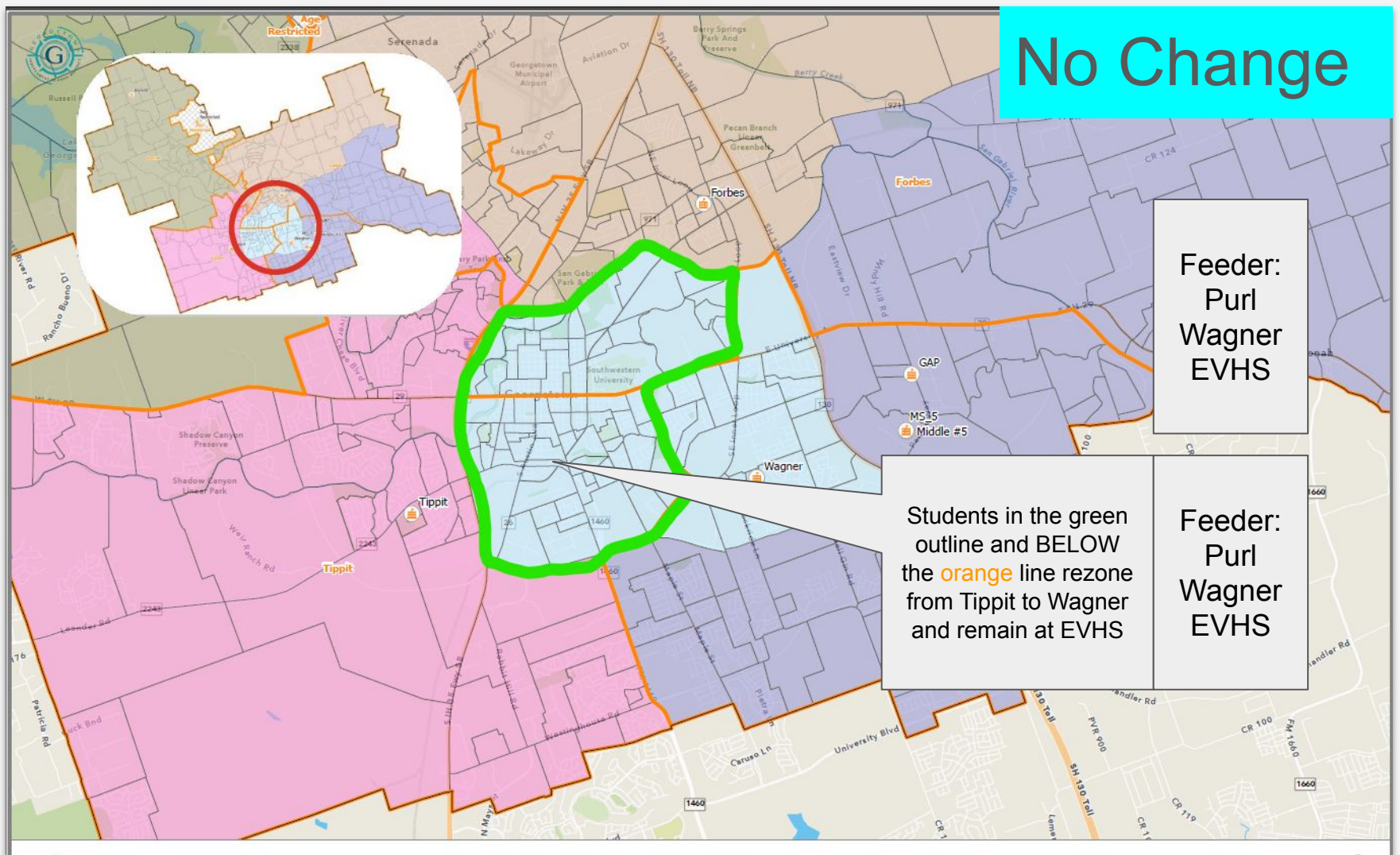
The above map shows the proposed attendance zone for the **New Middle School #5**

1. The **red circle** on the mini-map in the corner shows to where this area is in the district
2. The area outlined in **green** is the proposed zone\
3. The dark green line is the current high school boundary between GHS and EVHS. High school boundaries will not change in this rezoning.



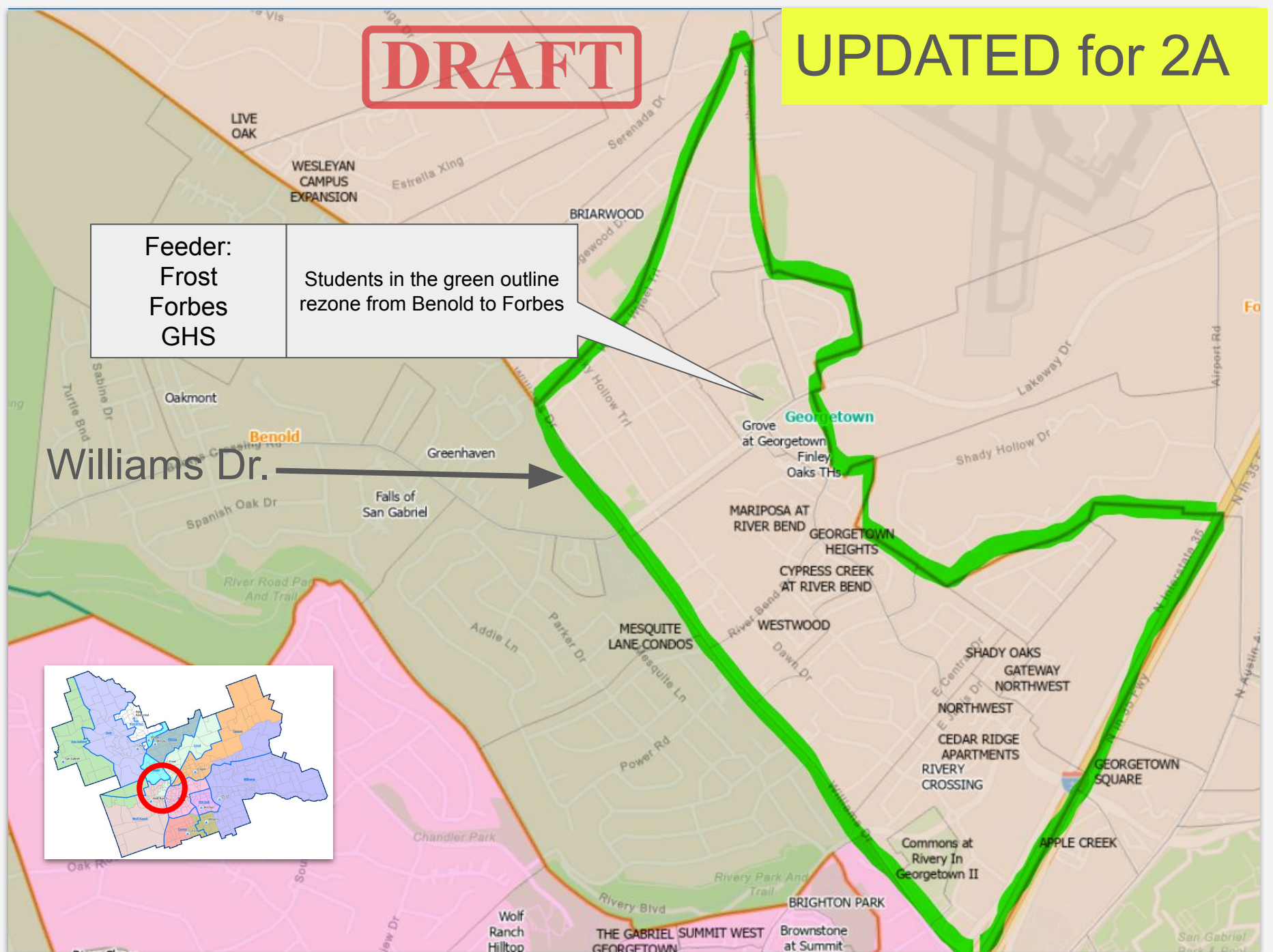
The above map shows the proposed attendance zone for the **New Middle School #5 (continued)**

1. This is a continuation of the previous map showing the southernmost part of the zone.
2. The **red circle** on the mini-map in the corner shows to where this area is in the district
3. The area outlined in **green** is the proposed zone



The above map shows the proposed attendance zone for **Purl ES**. **Currently zoned to Tippit and Forbes, they will all go to Wagner**

1. The **red circle** on the mini-map located in the corner shows to where this area is in the district
2. The area outlined in **green** is the proposed zone



The above map shows the proposed attendance zone for **Benold to Forbes**

1. The **red circle** on the mini-map located in the corner shows to where this area is in the district
2. The area outlined in **green** is the proposed zone

Summary of what changed between 1B and 2A

1. Updated: Students South of Williams between Booty's Drive to River Bend Drive and to Country Club Rd. remain zoned to Benold. Scenario 1A/B had students going to Tippit, but this has changed.

Community Meetings

All meetings are at 6PM

- November 10 – Wagner MS
- November 13 – San Gabriel ES
- December 9 – Wolf Ranch ES
- December 11 – Williams ES
- January 28 – Carver ES
- January 29 – Tippit MS
- February 5 – Purl ES

