



2025-26 D2
SCHOOL QUALITY SURVEY
Student District-Wide Results Report

Table of Contents

Executive Summary	2
Grades 3-5.....	6
Domain 1: Academic Support	6
Domain 2: School Equity.....	7
Domain 3: Family Involvement.....	8
Domain 4: School Leadership	9
Domain 5: School Maintenance	10
Domain 6: Safety & Behavior.....	11
Domain 7: Student Support.....	12
Domain 8: Personal Development and Success	13
Domain 9: Career-Connected Learning	14
D2 Promise	15
Domain 10: Artificial Intelligence (AI)	16
AI Usage Frequency	17
Grades 6-12	18
Domain 1: Academic Support	18
Domain 2: School Equity.....	19
Domain 3: Family Involvement.....	20
Domain 4: School Leadership	21
Domain 5: School Maintenance	22
Domain 6: Safety & Behavior.....	23
Domain 7: Student Support.....	24
Domain 8: Personal Development and Success	26
Domain 9: Career-Connected Learning	27
College & Career Readiness Resources (Gr 6-8)	28
College & Career Readiness Resources (Gr 9-12).....	29
Plans for After Graduation.....	30
D2 Promise & FAFSA	31
Domain 10: Artificial Intelligence (AI)	32
AI Usage Frequency	33

Executive Summary

The Student Survey measured School Quality in ten domains:

- Academic Support - The ways in which the school supports students' academic achievement and growth.
- School Equity - The ways in which the school promotes equity among students and staff.
- Family Involvement - The ways in which the school involves families in students' school life and education.
- School Leadership - The ways in which school leadership supports student success.
- School Maintenance - General upkeep and overall appearance of the school.
- Safety & Behavior - The ways in which the school promotes safety and discipline.
- Student Support - The ways in which the school supports the “whole child” (i.e. students' mental, social, and emotional health).
- Personal Development and Success - Students' development of relationship-building, personal responsibility, empathy, integrity, initiative, and critical thinking skills that lead to personal and academic success.
- Career-Connected Learning - The ways in which the school creates opportunities for students to be college & career ready.
- Artificial Intelligence (AI) - Students' understanding of how to use AI tools safely, responsibly, and thoughtfully in learning.

Survey items were scored on a four-point Likert scale, ranging from 1 (Strongly Disagree) to 4 (Strongly Agree). Percentage of “Agree/Strongly Agree” responses were calculated for each domain to produce a star rating. Each domain was rated in this way to produce the summary table(s) below.

Scoring Guide for Survey Ratings

Score (%)	Star Rating	Interpretation
81-100	☆☆☆☆	Perceived Area of Strength
61-80	☆☆☆☆	Positively Perceived Area
41-60	☆☆☆	Moderate Perception
21-40	☆☆	Potential Area of Concern
20 or less	☆	Perceived Area of Concern

Gr 3-5 Survey Domain Ratings

Domain	Score (%)	Star Rating
Academic Support	88	☆☆☆☆☆
School Equity	86	☆☆☆☆☆
Family Involvement	86	☆☆☆☆☆
School Leadership	92	☆☆☆☆☆
School Maintenance	78	☆☆☆☆
Safety & Behavior	84	☆☆☆☆☆
Student Support	86	☆☆☆☆☆
Personal Development and Success	85	☆☆☆☆☆
Career-Connected Learning	88	☆☆☆☆☆
Artificial Intelligence (AI)	60	☆☆☆
Overall	84	☆☆☆☆☆

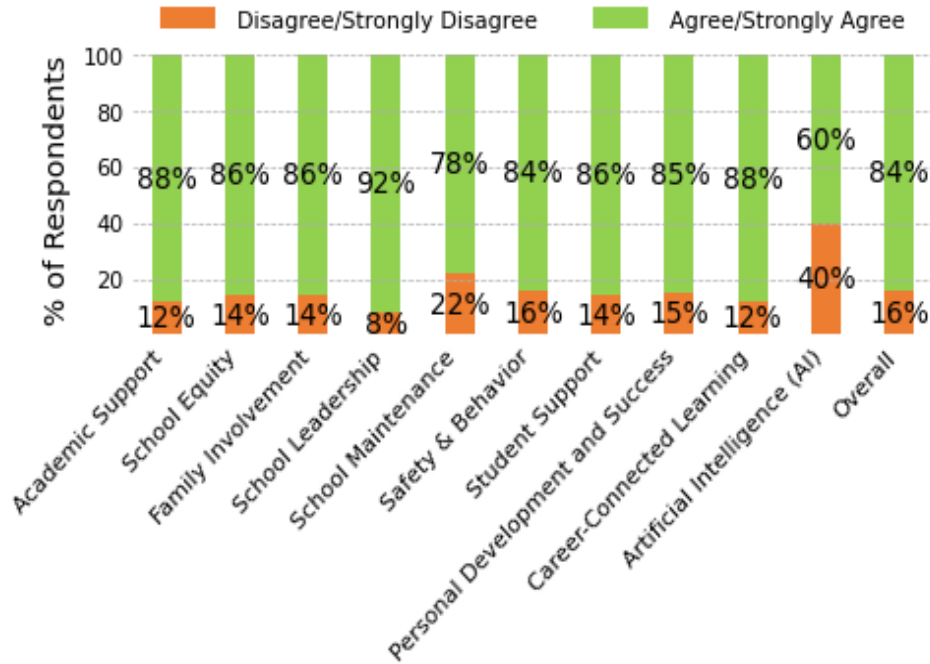
Gr 6-12 Survey Domain Ratings

Domain	Score (%)	Star Rating
Academic Support	81	☆☆☆☆☆
School Equity	73	☆☆☆☆
Family Involvement	83	☆☆☆☆☆
School Leadership	83	☆☆☆☆☆
School Maintenance	67	☆☆☆☆
Safety & Behavior	74	☆☆☆☆
Student Support	81	☆☆☆☆☆
Personal Development and Success	78	☆☆☆☆
Career-Connected Learning	82	☆☆☆☆☆
Artificial Intelligence (AI)	72	☆☆☆☆
Overall	78	☆☆☆☆

Survey Participation

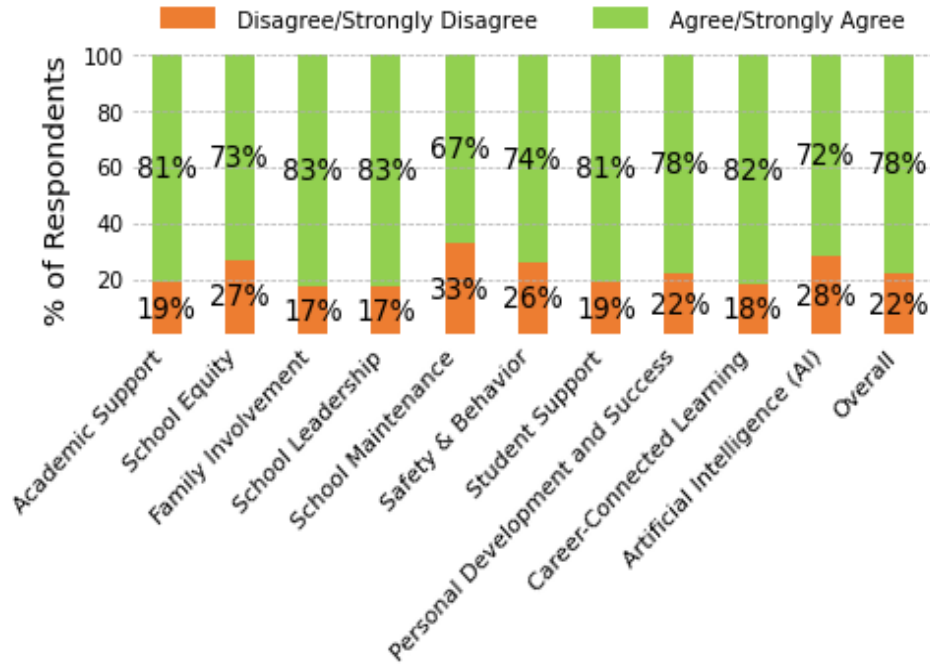
Metric	24-25	25-26
Sample Size (Actual Number of Respondents)	4555	4662
Population Size (Possible Number of Respondents)	5904	5812
Response Rate	77%	80%

Student Survey Results by Domain (Gr 3-5)



Domain	Strongly Disagree	Disagree	Agree	Strongly Agree	Total #
Academic Support	190	913	3658	4386	9147
School Equity	168	617	1684	3044	5513
Family Involvement	292	712	2143	4165	7312
School Leadership	84	378	1783	3260	5505
School Maintenance	166	645	1413	1425	3649
Safety & Behavior	377	1887	5706	5915	13885
Student Support	358	939	3271	4550	9118
Personal Development and Success	330	1280	4672	4664	10946
Career-Connected Learning	143	310	1209	1967	3629
Artificial Intelligence (AI)	1255	820	1204	1919	5198
Overall	3363	8501	26743	35295	73902

Student Survey Results by Domain (Gr 6-12)



Domain	Strongly Disagree	Disagree	Agree	Strongly Agree	Total #
Academic Support	467	2186	7455	3775	13883
School Equity	580	1643	3415	2594	8232
Family Involvement	593	1313	3869	5213	10988
School Leadership	311	1099	4145	2668	8223
School Maintenance	447	1310	2501	1107	5365
Safety & Behavior	802	4335	9684	5232	20053
Student Support	1304	3292	12130	7827	24553
Personal Development and Success	905	2712	8427	4310	16354
Career-Connected Learning	221	676	2475	1518	4890
Artificial Intelligence (AI)	999	1206	3034	2771	8010
Overall	6629	19772	57135	37015	120551

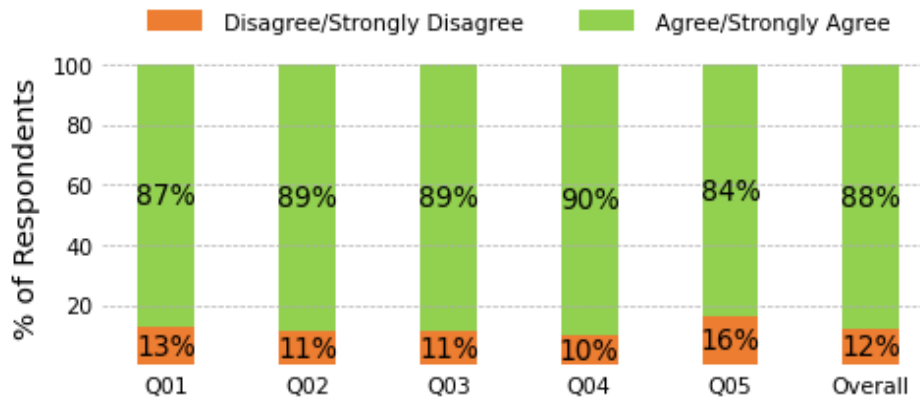
Grades 3-5

Domain 1: Academic Support

The ways in which the school supports students' academic achievement and growth.

Domain Rating	☆☆☆☆☆
Highest Scoring Question(s)	Q04
Lowest Scoring Question(s)	Q05
All Questions in this Domain	Q01. My teachers tell me how I did on my schoolwork. Q02. My teachers help me do better on my schoolwork. Q03. My teachers tell me when I am doing a good job. Q04. My teachers help me if I have trouble learning something. Q05. My teachers make learning interesting.

Student Survey Results (Gr 3-5) - Academic Support



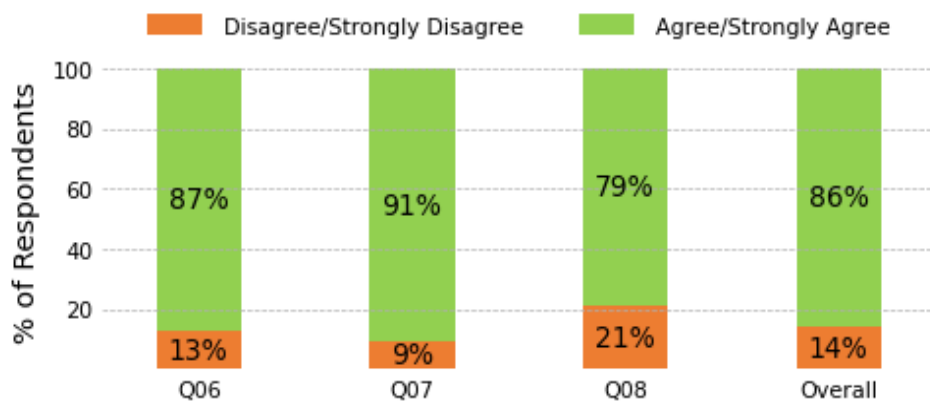
Question	Strongly Disagree	Disagree	Agree	Strongly Agree	Total #
Q01	30	206	909	685	1830
Q02	36	160	655	978	1829
Q03	32	174	747	881	1834
Q04	29	146	687	971	1833
Q05	63	227	660	871	1821
Overall	190	913	3658	4386	9147

Domain 2: School Equity

The ways in which the school promotes equity among students and staff.

Domain Rating	☆☆☆☆☆
Highest Scoring Question(s)	Q07
Lowest Scoring Question(s)	Q08
All Questions in this Domain	Q06. My teachers treat all their students fairly. Q07. Everyone is accepted at my school. Q08. Everyone is respected at my school.

Student Survey Results (Gr 3-5) - School Equity



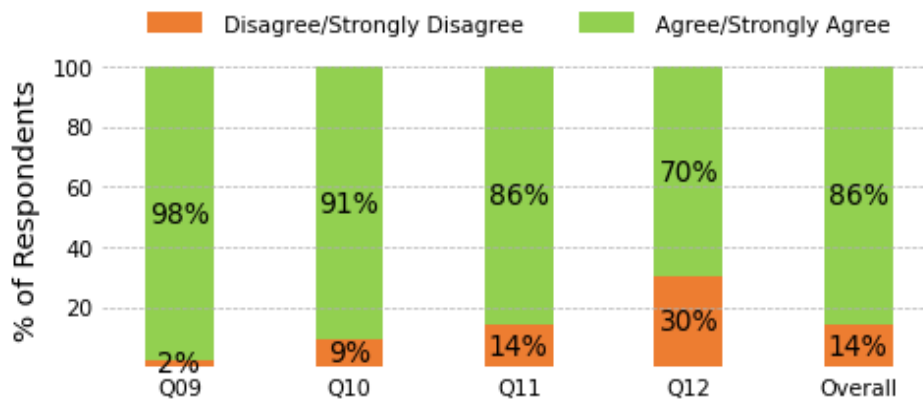
Question	Strongly Disagree	Disagree	Agree	Strongly Agree	Total #
Q06	50	184	590	1015	1839
Q07	39	134	427	1237	1837
Q08	79	299	667	792	1837
Overall	168	617	1684	3044	5513

Domain 3: Family Involvement

The ways in which the school involves families in students' school life and education.

Domain Rating	☆☆☆☆☆
Highest Scoring Question(s)	Q09
Lowest Scoring Question(s)	Q12
All Questions in this Domain	Q09. My family wants me to do well in school. Q10. My family asks me how I am doing in school. Q11. My family helps me with my homework when I need it. Q12. My family goes to school activities.

Student Survey Results (Gr 3-5) - Family Involvement



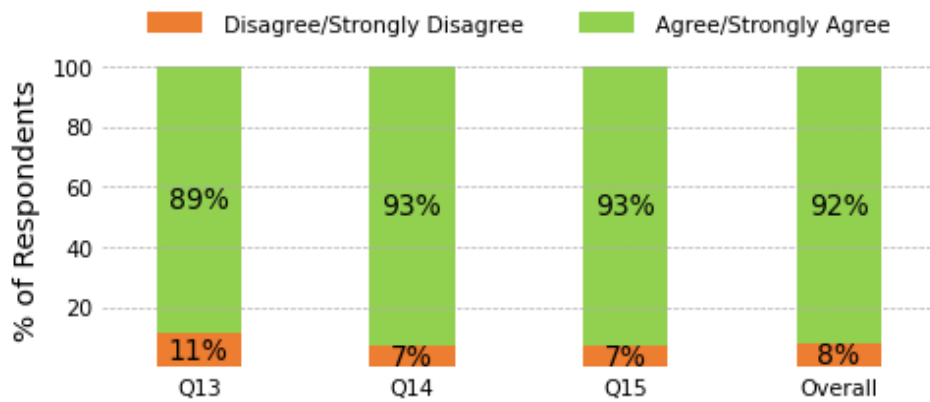
Question	Strongly Disagree	Disagree	Agree	Strongly Agree	Total #
Q09	8	29	229	1575	1841
Q10	41	130	634	1029	1834
Q11	76	177	554	1022	1829
Q12	167	376	726	539	1808
Overall	292	712	2143	4165	7312

Domain 4: School Leadership

The ways in which school leadership supports student success.

Domain Rating	☆☆☆☆☆
Highest Scoring Question(s)	Q14, Q15
Lowest Scoring Question(s)	Q13
All Questions in this Domain	<p>Q13. My principal and assistant principal(s) care how I feel about my school.</p> <p>Q14. My principal and assistant principal(s) do a good job of leading our school.</p> <p>Q15. My principal and assistant principal(s) visit the classrooms.</p>

Student Survey Results (Gr 3-5) - School Leadership



Question	Strongly Disagree	Disagree	Agree	Strongly Agree	Total #
Q13	42	162	594	1025	1823
Q14	28	96	466	1248	1838
Q15	14	120	723	987	1844
Overall	84	378	1783	3260	5505

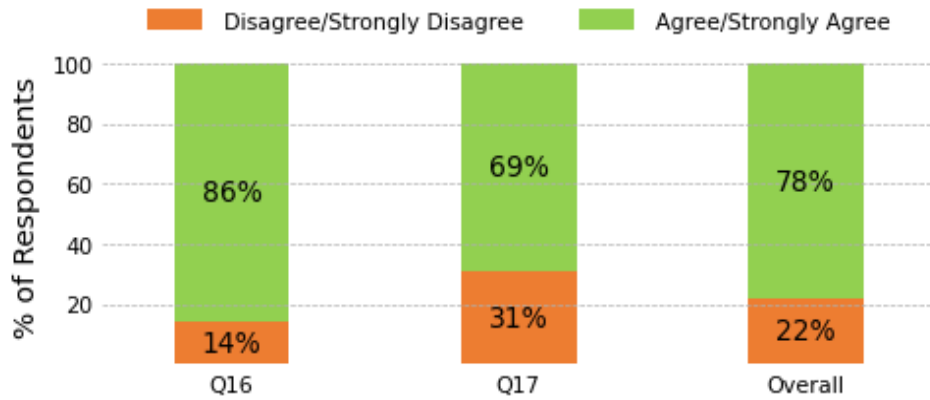
Domain 5: School Maintenance

General upkeep and overall appearance of the school.

Domain Rating	☆☆☆☆
Highest Scoring Question(s)	Q16
Lowest Scoring Question(s)	Q17
All Questions in this Domain	Q16. I am proud of the way my school looks. Q17. When things break at my school, they are fixed quickly.

*Results in this domain do not include AOA.

Student Survey Results (Gr 3-5) -
School Maintenance



Question	Strongly Disagree	Disagree	Agree	Strongly Agree	Total #
Q16	56	195	628	957	1836
Q17	110	450	785	468	1813
Overall	166	645	1413	1425	3649

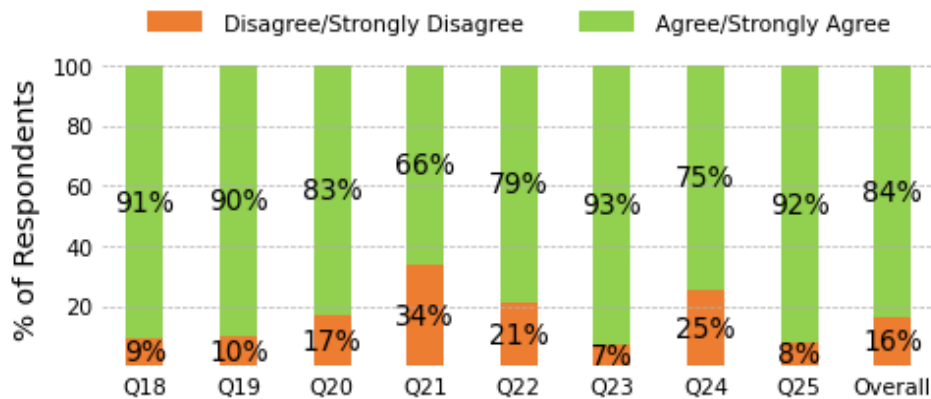
Domain 6: Safety & Behavior

The ways in which the school promotes safety and discipline.

Domain Rating	☆☆☆☆☆
Highest Scoring Question(s)	Q23
Lowest Scoring Question(s)	Q21
All Questions in this Domain	<p>Q18. I am safe in my classroom.</p> <p>Q19. Staff are present in the hallways during transition times, before school, and after school.</p> <p>Q20. I feel safe telling an adult at school about being bullied.</p> <p>Q21. I have reported bullying when it occurs at my school.</p> <p>Q22. I participate in restorative practices (circle, restoration, learning reflection, etc.) when I report bullying.</p> <p>Q23. My school has clear rules and consequences for behavior.</p> <p>Q24. Most students at my school try to work out problems with other students by talking to them.</p> <p>Q25. My teacher responds appropriately when there is disruptive behavior in the classroom.</p>

*Results for Q18 & Q19 do not include AOA.

Student Survey Results (Gr 3-5) - Safety & Behavior



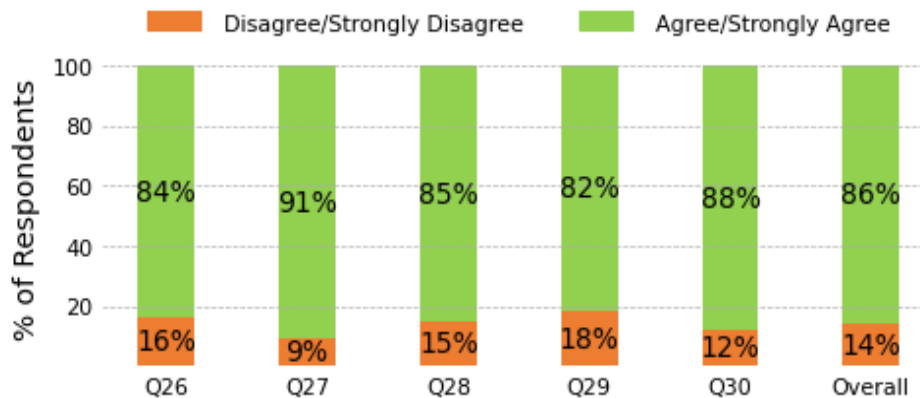
Question	Strongly Disagree	Disagree	Agree	Strongly Agree	Total #
Q18	35	127	551	1105	1818
Q19	35	152	682	951	1820
Q20	113	201	546	950	1810
Q21	0	621	1185	0	1806
Q22	0	240	906	0	1146
Q23	36	98	515	1181	1830
Q24	124	332	807	567	1830
Q25	34	116	514	1161	1825
Overall	377	1887	5706	5915	13885

Domain 7: Student Support

The ways in which the school supports the “whole child” (i.e. students' mental, social, and emotional health).

Domain Rating	☆☆☆☆☆
Highest Scoring Question(s)	Q27
Lowest Scoring Question(s)	Q29
All Questions in this Domain	Q26. Adults at my school listen to me. Q27. Adults at my school care about me. Q28. I can talk to a trusted adult at school about any problem. Q29. I am able to use strategies to manage emotions. Q30. I know how to make and keep friends at school.

Student Survey Results (Gr 3-5) - Student Support



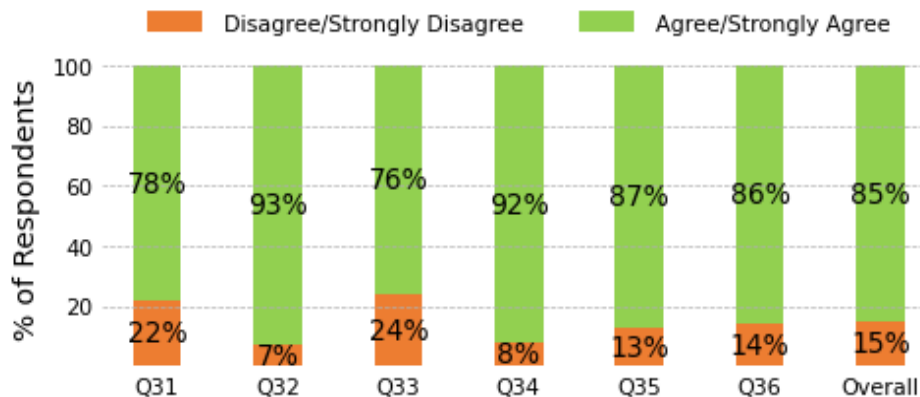
Question	Strongly Disagree	Disagree	Agree	Strongly Agree	Total #
Q26	79	217	801	731	1828
Q27	54	113	533	1120	1820
Q28	79	200	588	954	1821
Q29	88	241	756	735	1820
Q30	58	168	593	1010	1829
Overall	358	939	3271	4550	9118

Domain 8: Personal Development and Success

Students' development of relationship-building, personal responsibility, empathy, integrity, initiative, and critical thinking skills that lead to personal and academic success.

Domain Rating	☆☆☆☆☆
Highest Scoring Question(s)	Q32
Lowest Scoring Question(s)	Q33
All Questions in this Domain	<p>Q31. Most students at this school get along with a variety of people.</p> <p>Q32. I take responsibility for my own actions.</p> <p>Q33. Most students at this school are kind and care about others' feelings.</p> <p>Q34. I do the right thing even when nobody is watching.</p> <p>Q35. Most students at this school are motivated to improve.</p> <p>Q36. I consider multiple ways to approach a problem before working on solutions.</p>

Student Survey Results (Gr 3-5) - Personal Development and Success



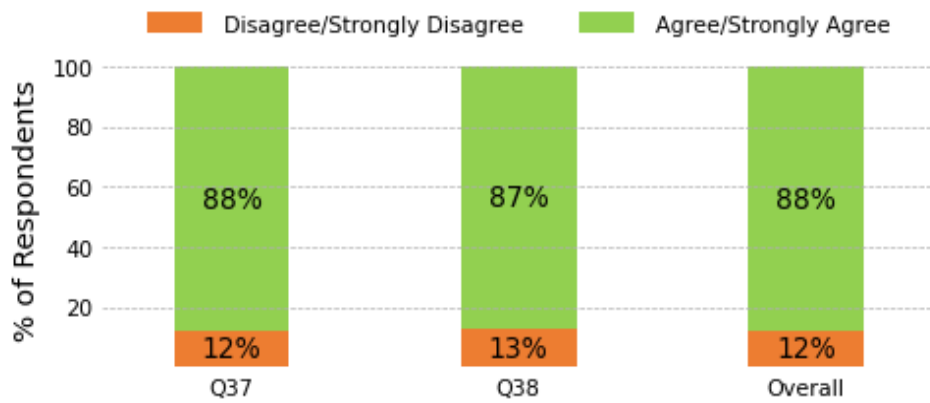
Question	Strongly Disagree	Disagree	Agree	Strongly Agree	Total #
Q31	79	325	812	609	1825
Q32	25	94	705	1002	1826
Q33	103	336	785	600	1824
Q34	27	127	751	921	1826
Q35	41	204	772	814	1831
Q36	55	194	847	718	1814
Overall	330	1280	4672	4664	10946

Domain 9: Career-Connected Learning

The ways in which the school creates opportunities for students to be college & career ready.

Domain Rating	☆☆☆☆☆
Highest Scoring Question(s)	Q37
Lowest Scoring Question(s)	Q38
All Questions in this Domain	Q37. I think about what career I want to have when I grow up. Q38. I have learned about different careers while at school.

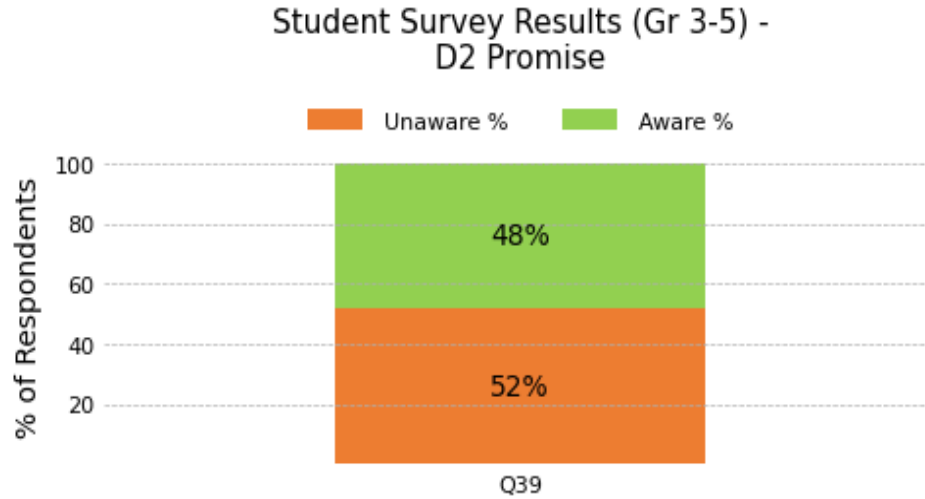
Student Survey Results (Gr 3-5) - Career-Connected Learning



Question	Strongly Disagree	Disagree	Agree	Strongly Agree	Total #
Q37	75	147	485	1110	1817
Q38	68	163	724	857	1812
Overall	143	310	1209	1967	3629

D2 Promise

All Questions in this Sub Topic	Q39. Are you aware that D2 high school graduates can attend Pikes Peak State College at NO COST as part of the D2 Promise Program?
---------------------------------	--



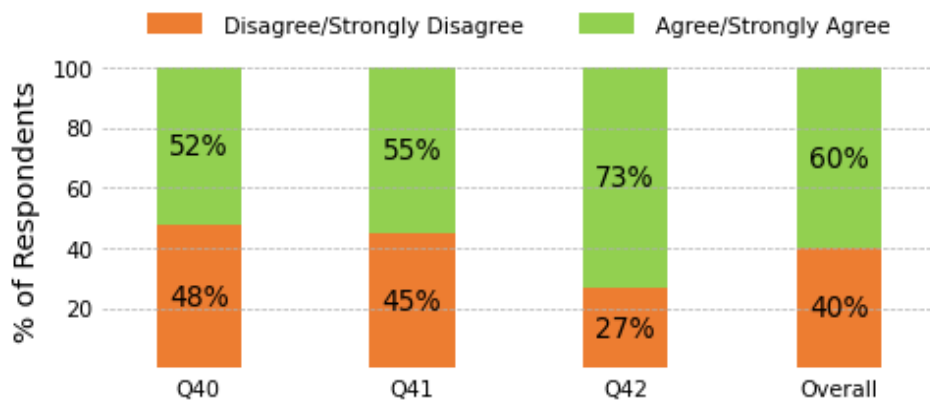
Question	Unaware	Aware	Total #
Q39	935	854	1789

Domain 10: Artificial Intelligence (AI)

Students' understanding of how to use AI tools safely, responsibly, and thoughtfully in learning.

Domain Rating	☆☆☆
Highest Scoring Question(s)	Q42
Lowest Scoring Question(s)	Q40
All Questions in this Domain	Q40. I know how to use AI to support my learning. Q41. I double-check the information I receive from AI. Q42. I know not to share personal information with AI.

Student Survey Results (Gr 3-5) - Artificial Intelligence (AI)

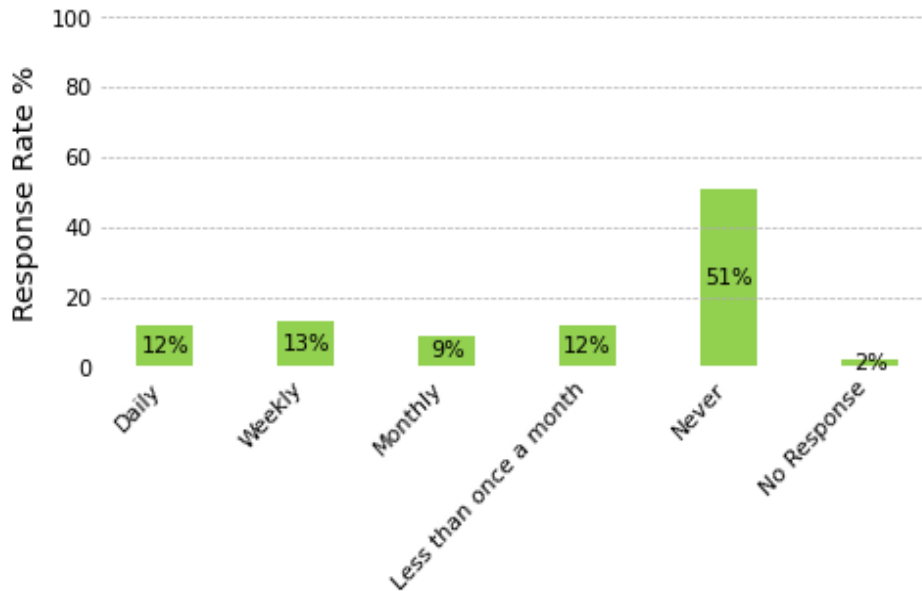


Question	Strongly Disagree	Disagree	Agree	Strongly Agree	Total #
Q40	492	343	469	439	1743
Q41	457	320	478	457	1712
Q42	306	157	257	1023	1743
Overall	1255	820	1204	1919	5198

AI Usage Frequency

All Questions in this Sub Topic	Q43. How often do you use AI tools for school or learning?
---------------------------------	--

Student Survey Results (Gr 3-5)-
How often do you use AI tools for school or learning?



Response	Number of Responses	Total Survey Respondents	Response Rate %
Daily	214	1854	12
Weekly	237	1854	13
Monthly	174	1854	9
Less than once a month	231	1854	12
Never	952	1854	51
No Response	46	1854	2

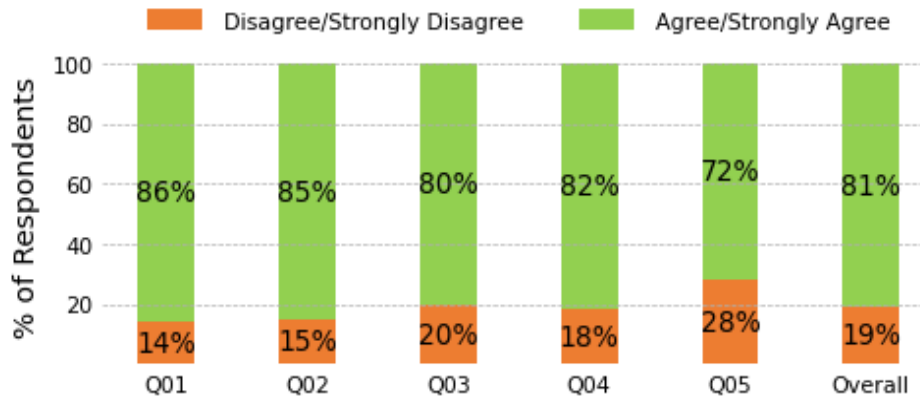
Grades 6-12

Domain 1: Academic Support

The ways in which the school supports students' academic achievement and growth.

Domain Rating	☆☆☆☆☆
Highest Scoring Question(s)	Q01
Lowest Scoring Question(s)	Q05
All Questions in this Domain	<p>Q01. My teachers make sure I know how I did on my schoolwork.</p> <p>Q02. My teachers help me improve on my schoolwork.</p> <p>Q03. My teachers let me know when I am doing a good job.</p> <p>Q04. My teachers help me when I am struggling in class.</p> <p>Q05. My teachers make learning interesting and relevant through career-connected learning, real-world application, personalized learning, and/or cultural relevance.</p>

Student Survey Results (Gr 6-12) - Academic Support



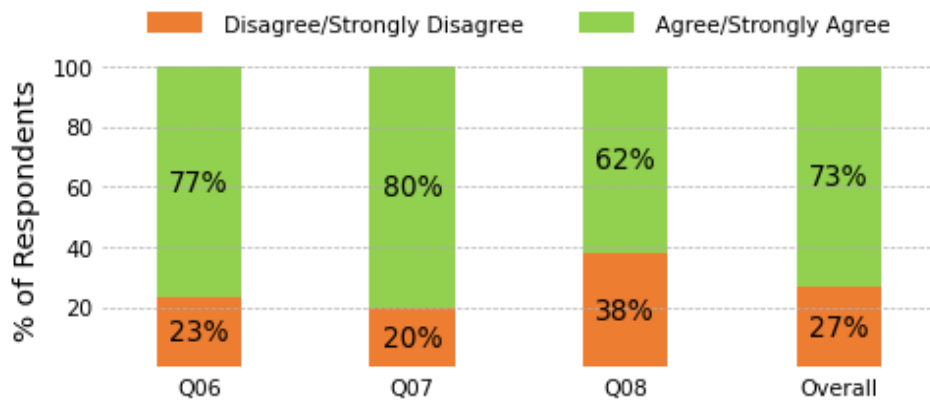
Question	Strongly Disagree	Disagree	Agree	Strongly Agree	Total #
Q01	67	336	1610	774	2787
Q02	63	363	1553	803	2782
Q03	100	448	1394	837	2779
Q04	72	434	1479	799	2784
Q05	165	605	1419	562	2751
Overall	467	2186	7455	3775	13883

Domain 2: School Equity

The ways in which the school promotes equity among students and staff.

Domain Rating	☆☆☆☆
Highest Scoring Question(s)	Q07
Lowest Scoring Question(s)	Q08
All Questions in this Domain	Q06. At my school, students are treated equitably regardless of race, culture, religion, sexual orientation, gender, or special needs. Q07. Everyone is accepted at my school. Q08. Everyone is respected at my school.

Student Survey Results (Gr 6-12) - School Equity



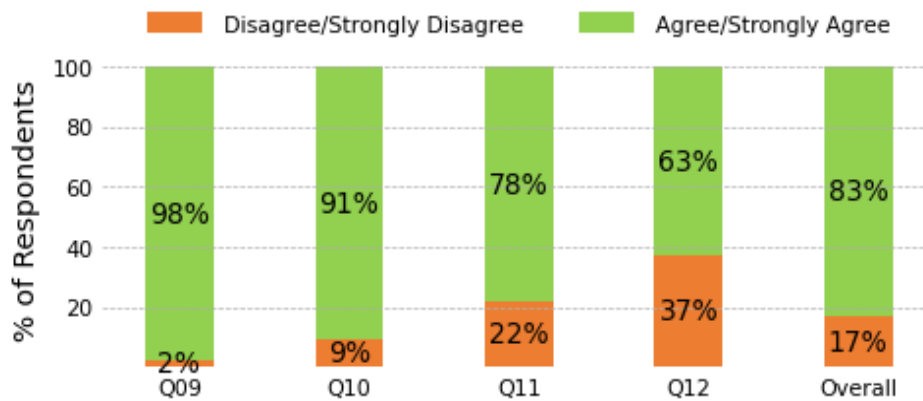
Question	Strongly Disagree	Disagree	Agree	Strongly Agree	Total #
Q06	174	447	1184	932	2737
Q07	156	392	1128	1079	2755
Q08	250	804	1103	583	2740
Overall	580	1643	3415	2594	8232

Domain 3: Family Involvement

The ways in which the school involves families in students' school life and education.

Domain Rating	☆☆☆☆☆
Highest Scoring Question(s)	Q09
Lowest Scoring Question(s)	Q12
All Questions in this Domain	Q09. My family wants me to do well in school. Q10. My family asks me how I am doing in school. Q11. My family helps me with my homework when I need it. Q12. My family goes to school activities.

Student Survey Results (Gr 6-12) - Family Involvement



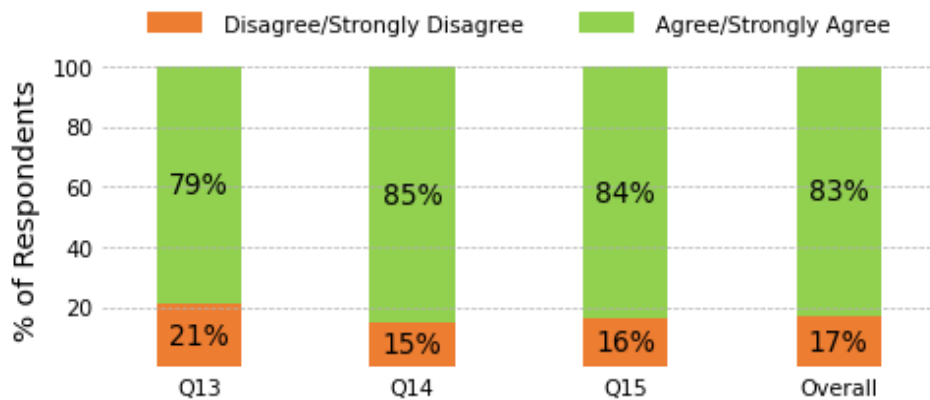
Question	Strongly Disagree	Disagree	Agree	Strongly Agree	Total #
Q09	13	36	582	2143	2774
Q10	57	194	1029	1490	2770
Q11	182	411	1107	1033	2733
Q12	341	672	1151	547	2711
Overall	593	1313	3869	5213	10988

Domain 4: School Leadership

The ways in which school leadership supports student success.

Domain Rating	☆☆☆☆☆
Highest Scoring Question(s)	Q14
Lowest Scoring Question(s)	Q13
All Questions in this Domain	<p>Q13. My principal and assistant principals care how I feel about my school.</p> <p>Q14. My principal and assistant principals do a good job of leading our school.</p> <p>Q15. My principal and assistant principals visit classrooms during the school day.</p>

Student Survey Results (Gr 6-12) - School Leadership



Question	Strongly Disagree	Disagree	Agree	Strongly Agree	Total #
Q13	135	431	1349	808	2723
Q14	97	310	1355	984	2746
Q15	79	358	1441	876	2754
Overall	311	1099	4145	2668	8223

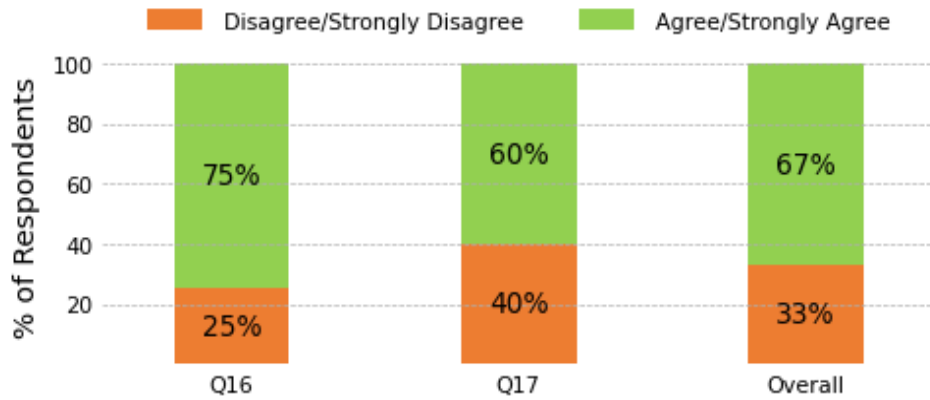
Domain 5: School Maintenance

General upkeep and overall appearance of the school.

Domain Rating	☆☆☆☆
Highest Scoring Question(s)	Q16
Lowest Scoring Question(s)	Q17
All Questions in this Domain	Q16. I am proud of the way my school looks. Q17. When things break at my school, they are fixed quickly.

*Results in this domain do not include AOA.

Student Survey Results (Gr 6-12) - School Maintenance



Question	Strongly Disagree	Disagree	Agree	Strongly Agree	Total #
Q16	153	526	1320	694	2693
Q17	294	784	1181	413	2672
Overall	447	1310	2501	1107	5365

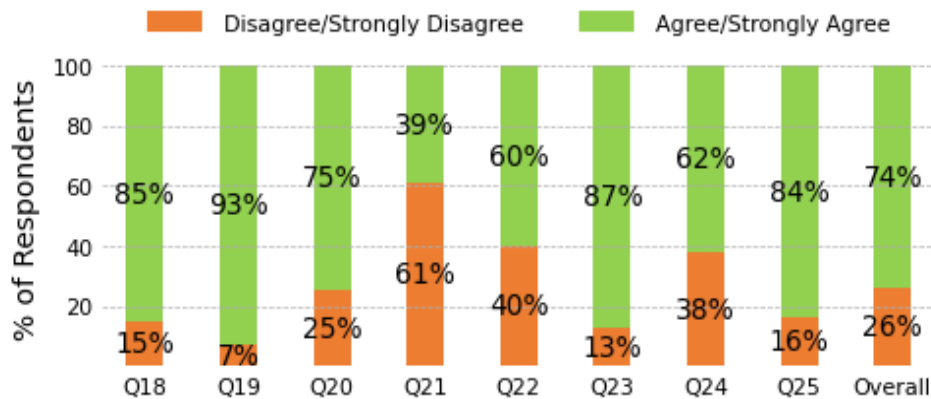
Domain 6: Safety & Behavior

The ways in which the school promotes safety and discipline.

Domain Rating	☆☆☆☆
Highest Scoring Question(s)	Q19
Lowest Scoring Question(s)	Q21
All Questions in this Domain	<p>Q18. I am safe in my classroom.</p> <p>Q19. Staff are present in the hallways during transition times, before school, and after school.</p> <p>Q20. I feel safe telling an adult at school about being bullied.</p> <p>Q21. I have reported bullying when it occurs at my school.</p> <p>Q22. I participate in restorative practices (circle, restoration, learning reflection, etc.) when I report bullying.</p> <p>Q23. My school has clear rules and consequences for behavior.</p> <p>Q24. Most students at my school are able to work out disagreements with other students.</p> <p>Q25. My teacher responds appropriately when there is disruptive behavior in the classroom.</p>

*Results for Q18 & Q19 do not include AOA.

Student Survey Results (Gr 6-12) - Safety & Behavior



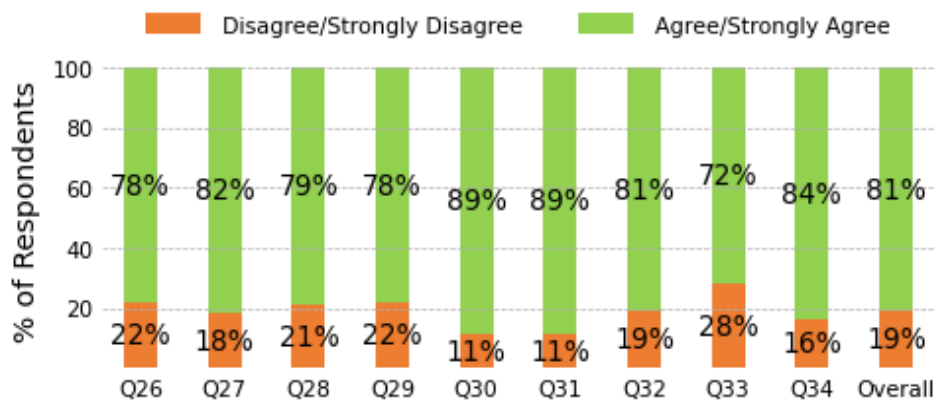
Question	Strongly Disagree	Disagree	Agree	Strongly Agree	Total #
Q18	88	305	1437	837	2667
Q19	29	156	1302	1194	2681
Q20	236	434	1240	821	2731
Q21	0	1660	1060	0	2720
Q22	0	409	622	0	1031
Q23	68	280	1323	1086	2757
Q24	289	755	1226	448	2718
Q25	92	336	1474	846	2748
Overall	802	4335	9684	5232	20053

Domain 7: Student Support

The ways in which the school supports the “whole child” (i.e. students' mental, social, and emotional health).

Domain Rating	☆☆☆☆☆
Highest Scoring Question(s)	Q30, Q31
Lowest Scoring Question(s)	Q33
All Questions in this Domain	<p>Q26. Staff members at my school listen to me.</p> <p>Q27. Staff members at my school care about me.</p> <p>Q28. I have a teacher, counselor, or other trusted staff member at my school to whom I can talk about any problem.</p> <p>Q29. I am able to use strategies to manage emotions.</p> <p>Q30. I have at least one close friend at school I can talk to and trust.</p> <p>Q31. I demonstrate verbal and nonverbal skills to show I am listening and care for others.</p> <p>Q32. I have the skills to cope with negative social experiences, online or at school.</p> <p>Q33. I know where to access mental health resources in my school.</p> <p>Q34. I recognize the influence of social media on mental health.</p>

Student Survey Results (Gr 6-12) - Student Support



Question	Strongly Disagree	Disagree	Agree	Strongly Agree	Total #
Q26	144	452	1457	652	2705
Q27	136	359	1452	775	2722
Q28	203	381	1225	911	2720
Q29	164	438	1429	705	2736
Q30	104	191	903	1550	2748
Q31	63	226	1577	885	2751
Q32	127	399	1465	747	2738
Q33	240	529	1223	724	2716

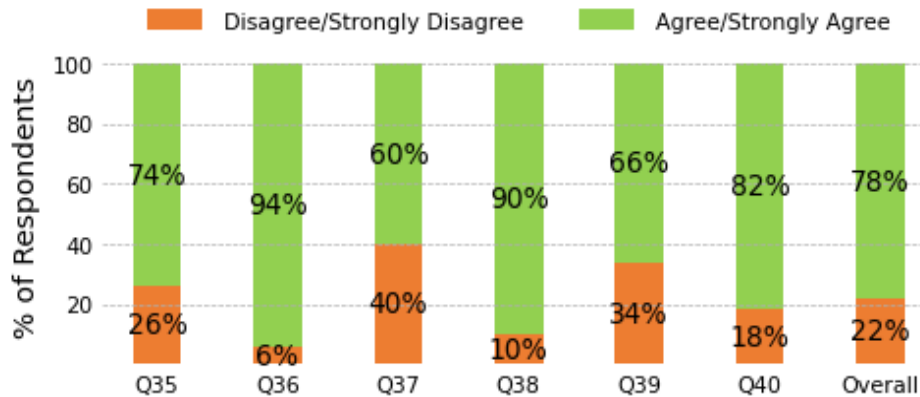
Q34	123	317	1399	878	2717
Overall	1304	3292	12130	7827	24553

Domain 8: Personal Development and Success

Students’ development of relationship-building, personal responsibility, empathy, integrity, initiative, and critical thinking skills that lead to personal and academic success.

Domain Rating	☆☆☆☆
Highest Scoring Question(s)	Q36
Lowest Scoring Question(s)	Q37
All Questions in this Domain	<p>Q35. Most students at this school get along with a variety of people.</p> <p>Q36. I take responsibility for my own actions.</p> <p>Q37. Most students at this school are kind and care about others' feelings.</p> <p>Q38. I do the right thing even when nobody is watching.</p> <p>Q39. Most students at this school are motivated to improve.</p> <p>Q40. I consider multiple ways to approach a problem before working on solutions.</p>

Student Survey Results (Gr 6-12) - Personal Development and Success



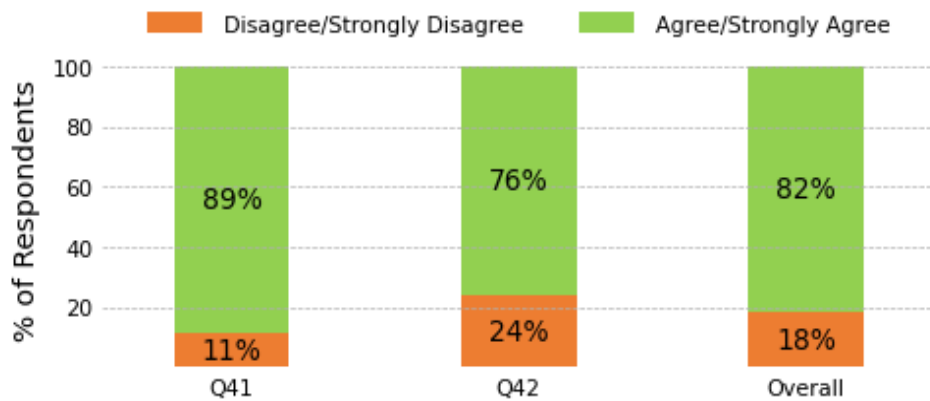
Question	Strongly Disagree	Disagree	Agree	Strongly Agree	Total #
Q35	168	531	1393	607	2699
Q36	43	127	1440	1134	2744
Q37	311	771	1168	460	2710
Q38	63	201	1616	871	2751
Q39	211	700	1292	515	2718
Q40	109	382	1518	723	2732
Overall	905	2712	8427	4310	16354

Domain 9: Career-Connected Learning

The ways in which the school creates opportunities for students to be college & career ready.

Domain Rating	☆☆☆☆☆
Highest Scoring Question(s)	Q41
Lowest Scoring Question(s)	Q42
All Questions in this Domain	Q41. I think about what careers I might like to pursue as they relate to my interests. (Gr 6-10) Q42. My teachers help connect what we're learning in class to different careers we might be interested in exploring.

Student Survey Results (Gr 6-12) - Career-Connected Learning



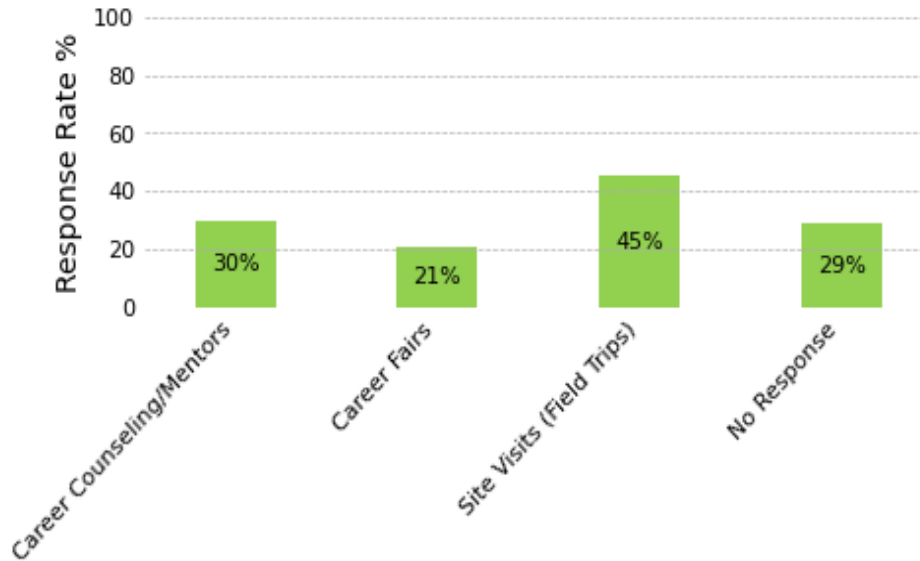
Question	Strongly Disagree	Disagree	Agree	Strongly Agree	Total #
Q41	70	176	1067	879	2192
Q42	151	500	1408	639	2698
Overall	221	676	2475	1518	4890

College & Career Readiness Resources (Gr 6-8)

All Questions in this Sub Topic	Q43. I have participated in the following College and Career Readiness resources (Gr 6-8)
---------------------------------	---

*Students were able to select multiple responses.

Student Survey Results (Gr 6-8) -
I have participated in the following
College & Career Readiness resources:



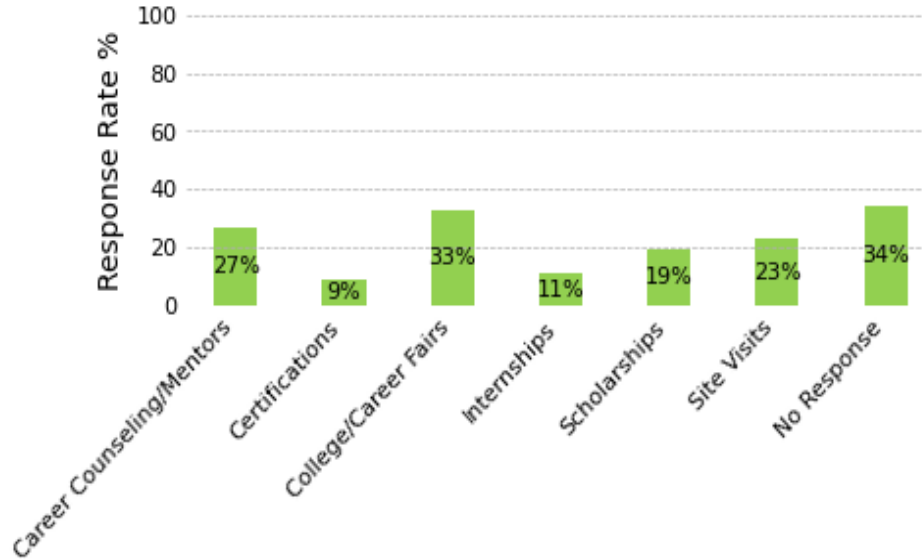
Response	Number of Responses	Total Survey Respondents	Response Rate %
Career Counseling/Mentors	470	1559	30
Career Fairs	325	1559	21
Site Visits (Field Trips)	709	1559	45
No Response	454	1559	29

College & Career Readiness Resources (Gr 9-12)

All Questions in this Sub Topic	Q44. I have participated in the following College and Career Readiness resources (Gr 9-12)
---------------------------------	--

*Students were able to select multiple responses.

Student Survey Results (Gr 9-12) -
I have participated in the following
College & Career Readiness resources:



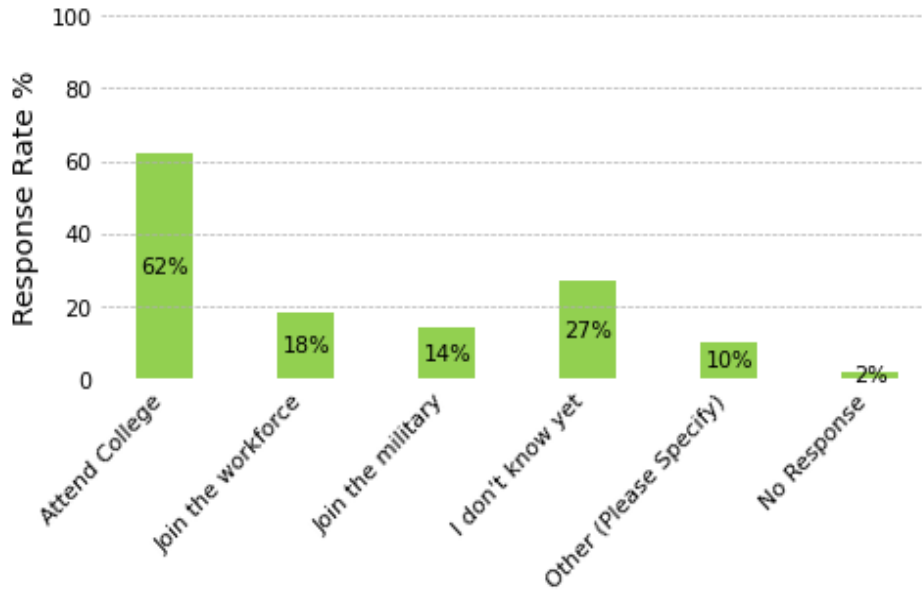
Response	Number of Responses	Total Survey Respondents	Response Rate %
Career Counseling/Mentors	340	1249	27
Certifications	117	1249	9
College/Career Fairs	410	1249	33
Internships	143	1249	11
Scholarships	235	1249	19
Site Visits	282	1249	23
No Response	424	1249	34

Plans for After Graduation

All Questions in this Sub Topic	Q45. After graduation, I plan to do the following (Gr 11-12)
---------------------------------	--

*Students were able to select multiple responses.

Student Survey Results (Gr 11-12) -
After Graduation, I plan to do the Following:

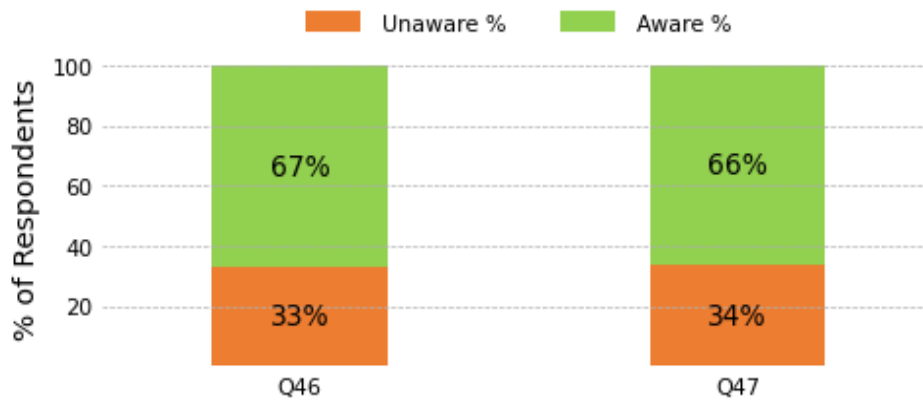


Response	Number of Responses	Total Survey Respondents	Response Rate %
Attend College	327	530	62
Join the workforce	95	530	18
Join the military	73	530	14
I don't know yet	141	530	27
Other (Please Specify)	51	530	10
No Response	10	530	2

D2 Promise & FAFSA

<p>All Questions in this Sub Topic</p>	<p>Q46. Are you aware that D2 high school graduates can attend Pikes Peak State College at NO COST as part of the D2 Promise Program? Q47. Are you aware that completing the FAFSA (Free Application for Federal Student Aid) and CASFA (Colorado Application for State Financial Aid) can be beneficial to more than just college plans? (Gr 9-12)</p>
--	--

Student Survey Results (Gr 6-12) - D2 Promise & FAFSA



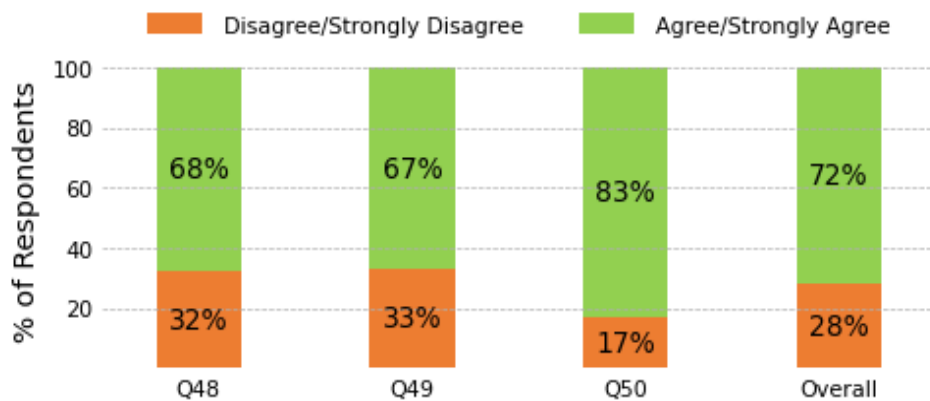
Question	Unaware	Aware	Total #
Q46	892	1806	2698
Q47	415	798	1213

Domain 10: Artificial Intelligence (AI)

Students' understanding of how to use AI tools safely, responsibly, and thoughtfully in learning.

Domain Rating	☆☆☆☆
Highest Scoring Question(s)	Q50
Lowest Scoring Question(s)	Q49
All Questions in this Domain	Q48. I know how to use AI to support my learning. Q49. I double-check the information I receive from AI. Q50. I know not to share personal information with AI.

Student Survey Results (Gr 6-12) - Artificial Intelligence (AI)

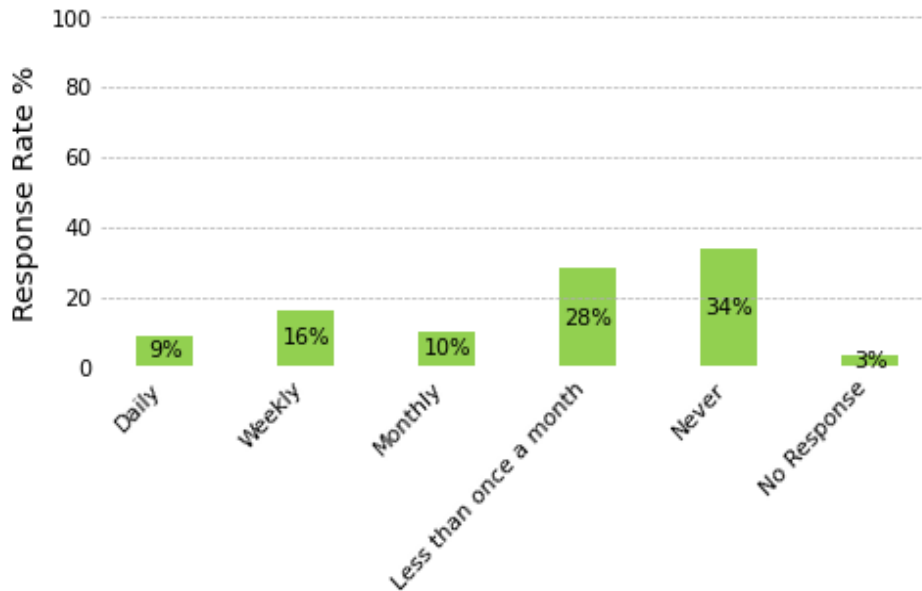


Question	Strongly Disagree	Disagree	Agree	Strongly Agree	Total #
Q48	370	488	1163	658	2679
Q49	388	495	1068	700	2651
Q50	241	223	803	1413	2680
Overall	999	1206	3034	2771	8010

AI Usage Frequency

All Questions in this Sub Topic	Q51. How often do you use AI tools for school or learning?
---------------------------------	--

Student Survey Results (Gr 6-12)-
How often do you use AI tools for school or learning?



Response	Number of Responses	Total Survey Respondents	Response Rate %
Daily	266	2808	9
Weekly	444	2808	16
Monthly	293	2808	10
Less than once a month	773	2808	28
Never	944	2808	34
No Response	88	2808	3