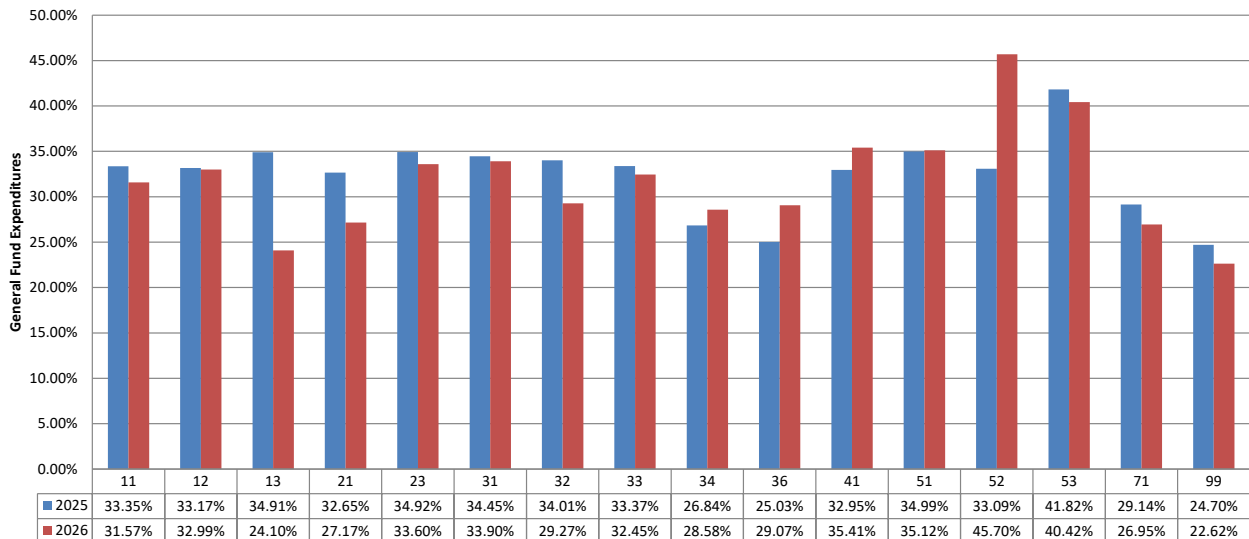


TOMBALL INDEPENDENT SCHOOL DISTRICT
FINANCIAL COMPARISON REPORT
As of October 31, 2025
General Fund, Food Service, and Debt Service Funds
(AMOUNTS IN \$000)

	Budget	Actual	% of Budget Realized / Expended
General Fund Revenues			
Property Taxes and P&I	\$ 121,475	\$ 2,618	2.2%
Co-Curricular Activity	320	372	116.1%
Investment Income	2,506	1,278	51.0%
Rents, Fees, Misc.	88	1,298	1479.3%
State Rev.- Foundation Program	104,195	49,332	47.3%
State Revenue - TRS On-Behalf	12,500	6,803	0.0%
State Revenue - Other Programs	0	0	0.0%
Federal Revenue Programs	1,064	78	7.3%
Total General Fund Revenues	\$ 242,148	\$ 61,779	25.5%
General Fund Expenditures by Function			
11 Instruction	\$ 156,085	\$ 49,283	31.6%
12 Instr. Resource & Media Services	2,642	872	33.0%
13 Curriculum Dev./Instr. Staff Development	1,328	320	24.1%
21 Instructional Leadership	5,991	1,627	27.2%
23 School Leadership	12,494	4,198	33.6%
31 Guidance & Counseling Services	7,747	2,626	33.9%
32 Social Work Services	107	31	29.3%
33 Health Services	2,858	928	32.5%
34 Pupil Transportation	10,545	3,013	28.6%
36 Co-curr./Extracurr. Activities	5,164	1,501	29.1%
41 General Administration	7,664	2,714	35.4%
51 Plant Maintenance & Operations	22,879	8,035	35.1%
52 Security & Monitoring	3,152	1,441	45.7%
53 Data Processing Services	3,888	1,572	40.4%
61 Community Services	1	0	0.0%
71 Leases	377	47	12.5%
81 Fac. Acquisition & Construction	0	0	0.0%
95 Juvenile Justice Alt. Ed. Program	14	0	0.0%
99 Other Intergovernmental	1,520	344	22.6%
Total General Fund Expenditures	\$ 244,456	\$ 78,552	32.1%

Budget Targets:

This chart represents the percentage actually expended of the appropriations approved by the Board by Function.



TOMBALL INDEPENDENT SCHOOL DISTRICT
FINANCIAL COMPARISON REPORT
 As of October 31, 2025
 General Fund, Food Service, and Debt Service Funds
 (AMOUNTS IN \$000)

	<u>Budget</u>	<u>Actual</u>	<u>% of Budget Realized / Expended</u>
Food Service Fund Revenues			
Food Sales	\$ 6,842	\$ 1,820	26.6%
State Revenue - TRS On-Behalf	530	169	31.8%
Federal/State Reimbursement	5,455	939	17.2%
Total Food Service Fund Revenues	<u>\$ 12,827</u>	<u>\$ 2,928</u>	22.8%
Food Service Fund Expenditures	<u>\$ 12,904</u>	<u>\$ 3,019</u>	23.4%
Debt Service Fund Revenues			
Property Taxes and P&I	\$ 70,695	\$ 1,516	2.1%
Investment Income	805	254	31.6%
State Rev.-Foundation Allocation	6,000	0	0.0%
Sale of Bonds	0	1,676	0.0%
Total Debt Service Fund Revenues	<u>\$ 77,500</u>	<u>\$ 3,446</u>	4.4%
Debt Service Fund Expenditures	<u>\$ 77,500</u>	<u>\$ 20,938</u>	27.0%

****Review additional tabs (worksheets) for reconciliations of amendments to adopted revenue and expenditure appropriations.**

